

26 May 2016 / Number 20

Surveillance System in Tokyo, Japan

The infectious diseases which all physicians must report

All physicians must report to health centers the incidence of the diseases which are shown at page one. Health centers electronically report the individual cases to Tokyo Metropolitan Infectious Disease Surveillance Center.

The infectious diseases required to be reported by the sentinels

The numbers of patients who visit the sentinel clinics or hospitals during a week are reported to health centers in Tokyo. And they electronically report the numbers to Tokyo Metropolitan Infectious Disease Surveillance Center. We have about 500 sentinel clinics and hospitals in Tokyo.

Tokyo Metropolitan Institute of Public Health

TEL:81-3-3363-3213 FAX:81-3-5332-7365

e-mail:www@tokyo-eiken.go.jp

URL:idsc.tokyo-eiken.go.jp/

Number of patients with the diseases which all physicians must report

Category	Diseases	Tokyo					Japan	
		17th	18th	19th	20th	Cum 2016	20th	Cum 2016
I	Ebola hemorrhagic fever							
	Crimean-Congo hemorrhagic fever							
	Smallpox							
	South American hemorrhagic fever							
	Plague							
	Marburg disease							
	Lassa fever							
II	Acute poliomyelitis							
	Tuberculosis	83	40	80	79	1,368	395	8,638
	Diphtheria							
	Severe Acute Respiratory Syndrome(SARS)							
	Middle East Respiratory Syndrome (MERS)							
	Avian influenza H5N1							
	Avian influenza H7N9							
III	Cholera							1
	Shigellosis	2			1	16	1	46
	Enterohemorrhagic Escherichia coli infection	3	5	1	3	41	23	309
	Typhoid fever					9	3	20
	Paratyphoid fever					4		8
IV	Hepatitis E	1		2	1	20	8	175
	West Nile fever							
	Hepatitis A	1	1	4		37	1	139
	Echinococcosis							4
	Yellow fever							
	Psittacosis							1
	Omsk hemorrhagic fever							
	Relapsing fever							1
	Kyasanur forest disease							
	Q fever							
	Rabies							
	Coccidioidomycosis		1			1		1
	Monkeypox							
	Zika virus infection						1	6
	Severe Fever with Thrombocytopenia Syndrome						3	12
	Hemorrhagic fever with renal syndrome							
	Western equine encephalitis							
	Tick-borne encephalitis							
	Anthrax							
	Chikungunya fever					2		2
	Scrub typhus(Tsutsugamushi disease)						1	60
	Dengue fever	3	2	2	2	39	5	133
	Eastern equine encephalitis							
	Avian influenza (excluding H5N1 and H7N9)							
	Nipah virus infection							
	Japanese spotted fever						4	31
	Japanese encephalitis							
	Hantavirus pulmonary syndrome							
	Herpes B virus infection							
	Glanders							
	Brucellosis							
	Venezuelan equine encephalitis							
Hendra virus infection								
Epidemic typhus								
Botulism					1		1	
Malaria					6	1	17	
Tularemia								
Lyme disease								
Lyssavirus infection(excluding rabies)								
Rift valley fever								
Melioidosis								
Legionellosis	4		2	5	39	28	410	
Leptospirosis							3	
Rocky mountain spotted fever								

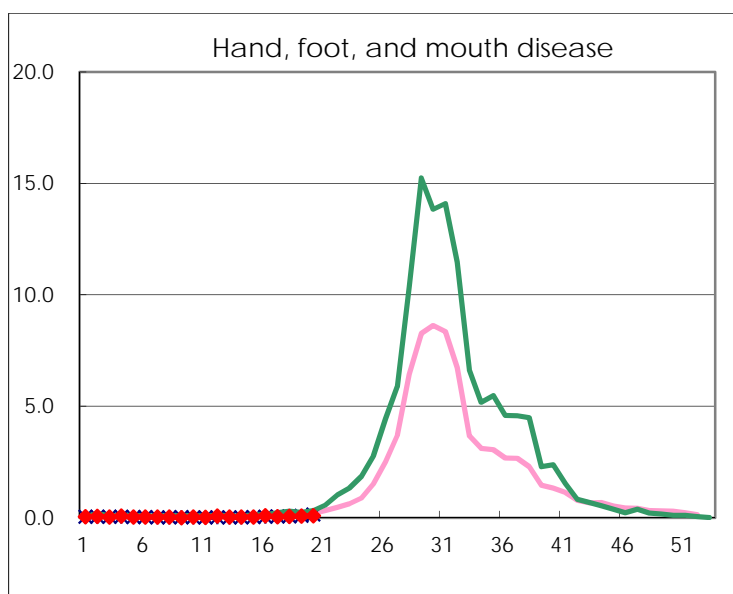
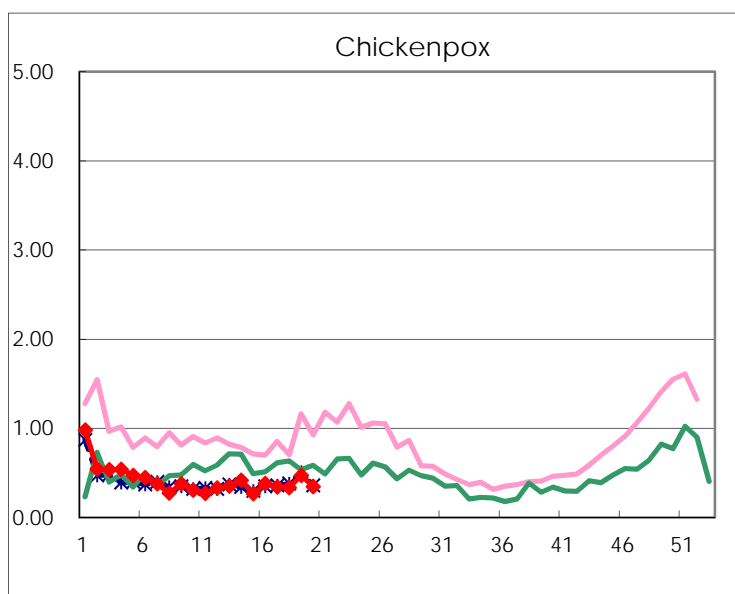
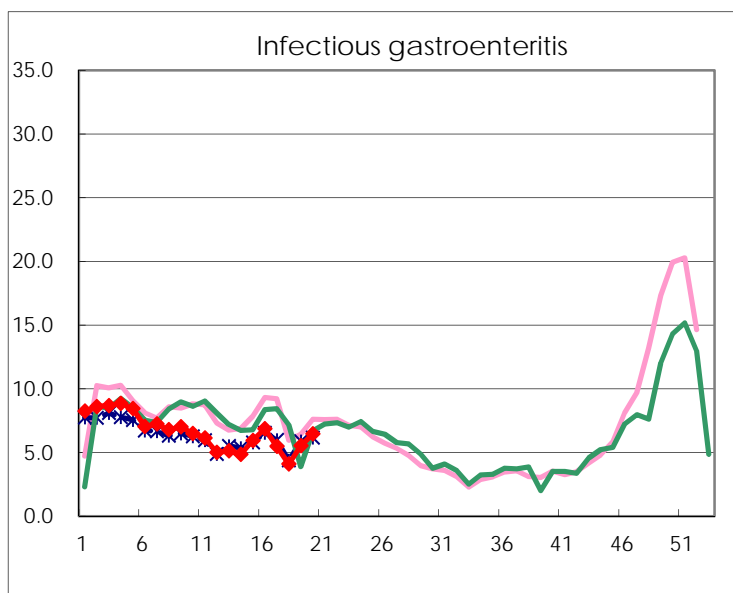
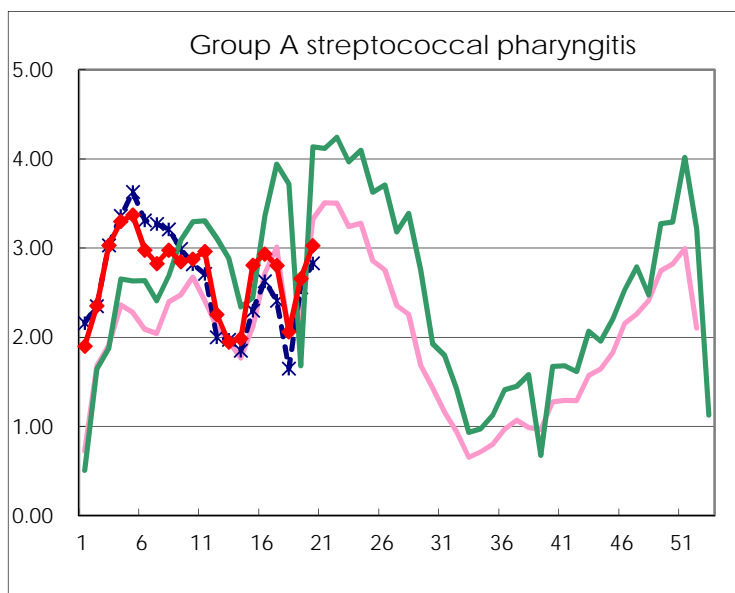
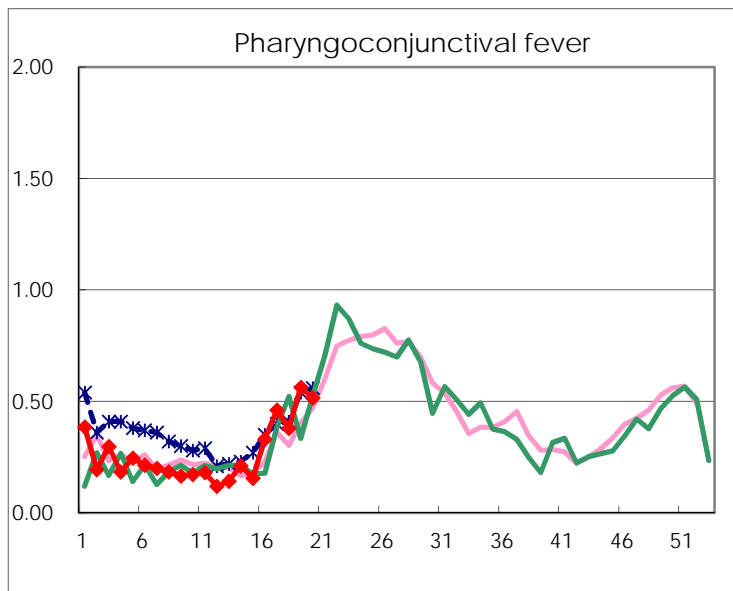
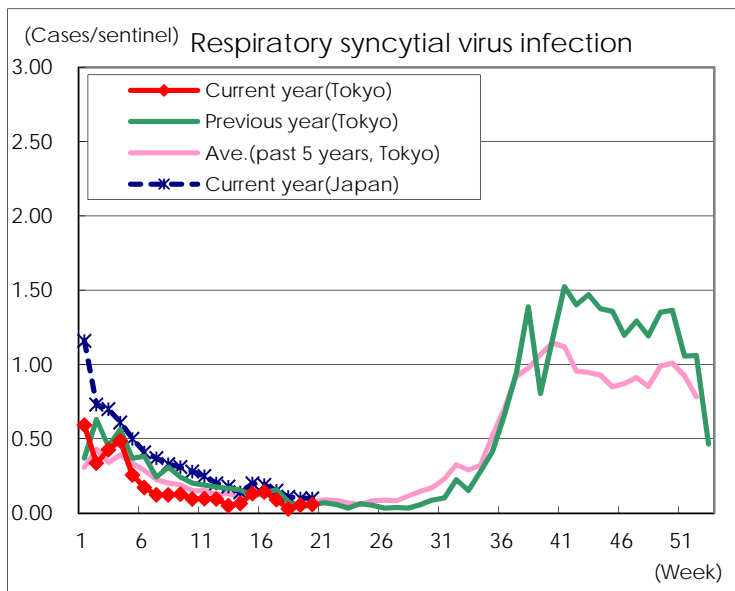
Category	Diseases	Tokyo					Japan	
		17th	18th	19th	20th	Cum 2016	20th	Cum 2016
V	Amebiasis	6	6	3	5	87	17	453
	Viral hepatitis(excluding hepatitis A and E)			4		20	4	91
	CRE infection	1	4	3	5	75	17	502
	Acute encephalitis(excluding JE and WNE)	1		1	4	53	8	395
	Cryptosporidiosis							5
	Creutzfeldt-Jakob disease	2				9	1	70
	Severe invasive streptococcal infections(TSLS)	1				27	3	199
	Acquired immunodeficiency syndrome (AIDS)	11	3	8	7	180	13	533
	Giardiasis					6		23
	Invasive <i>Haemophilus influenzae</i> disease	1				16	2	132
	Invasive meningococcal disease					1	1	21
	Invasive pneumococcal disease	10	7	12	10	175	36	1,276
	Varicella (limited to hospitalized case)	1	2			17	2	104
	Congenital rubella syndrome							
	Syphilis	26	13	49	36	628	63	1,438
	Disseminated cryptococcosis					9	2	46
	Tetanus	1			1	3	1	38
	Vancomycin-resistant <i>S. aureus</i> infection						1	1
	Vancomycin-resistant Enterococcus infection							15
	Rubella			1	1	10	2	43
Measles			2		3	1	9	
MDRA infection				1	1		15	

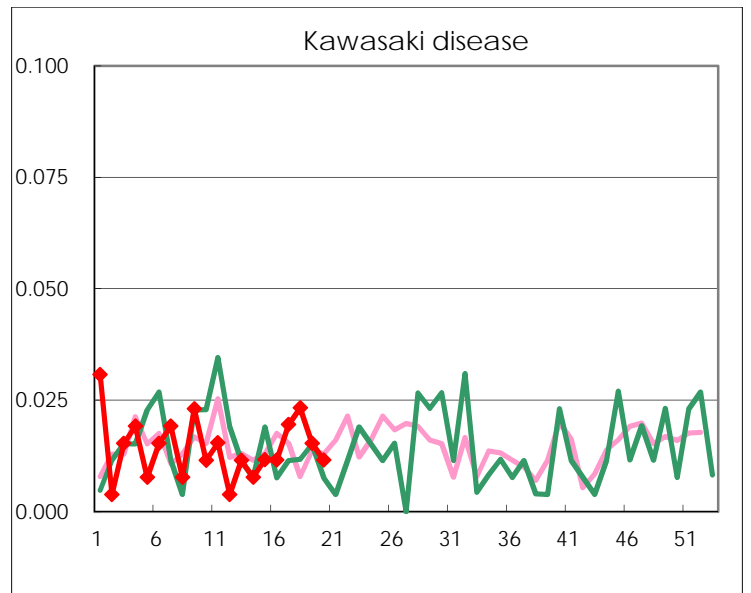
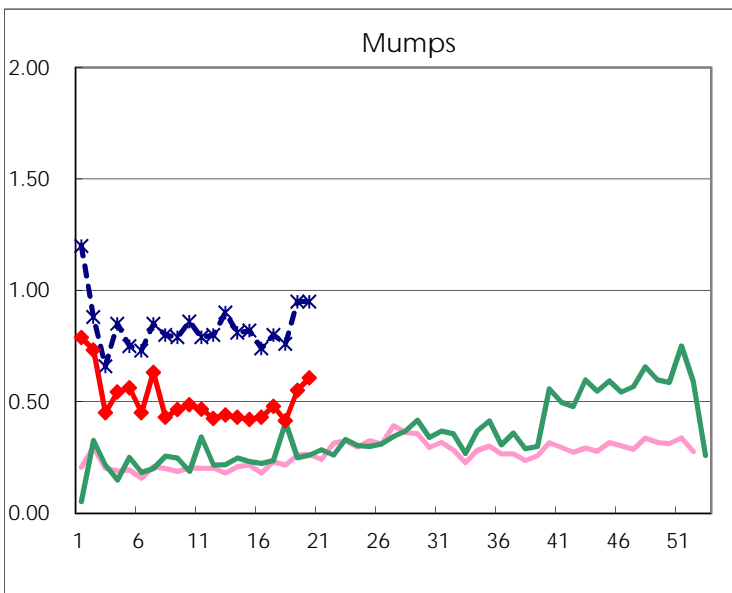
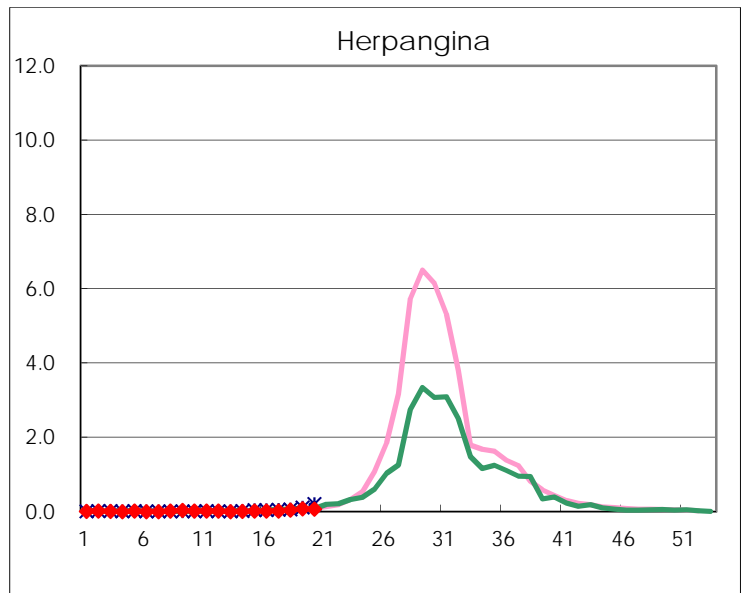
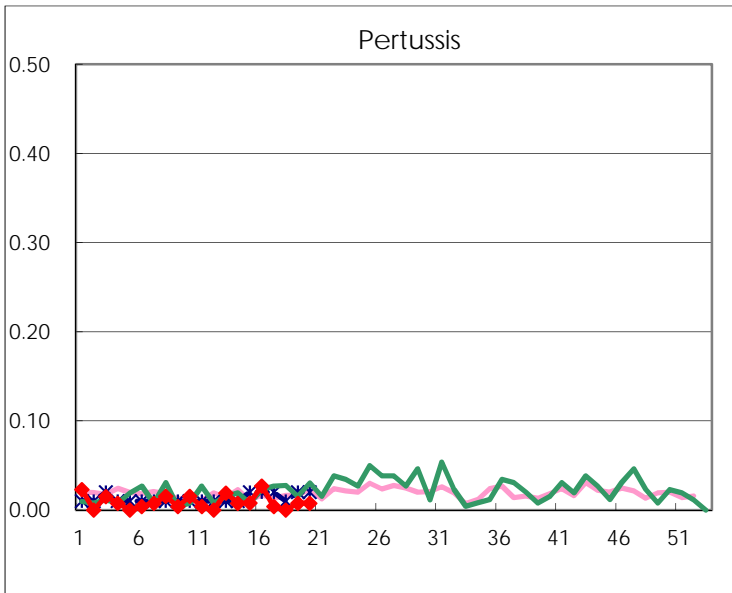
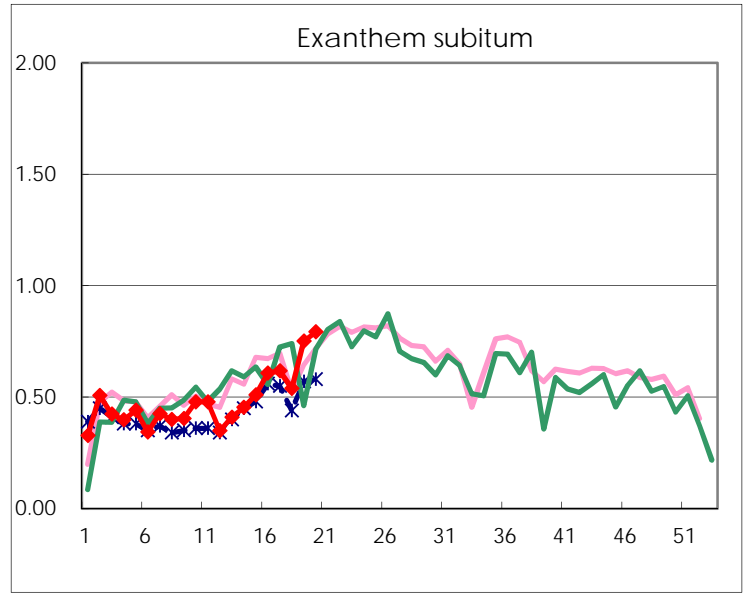
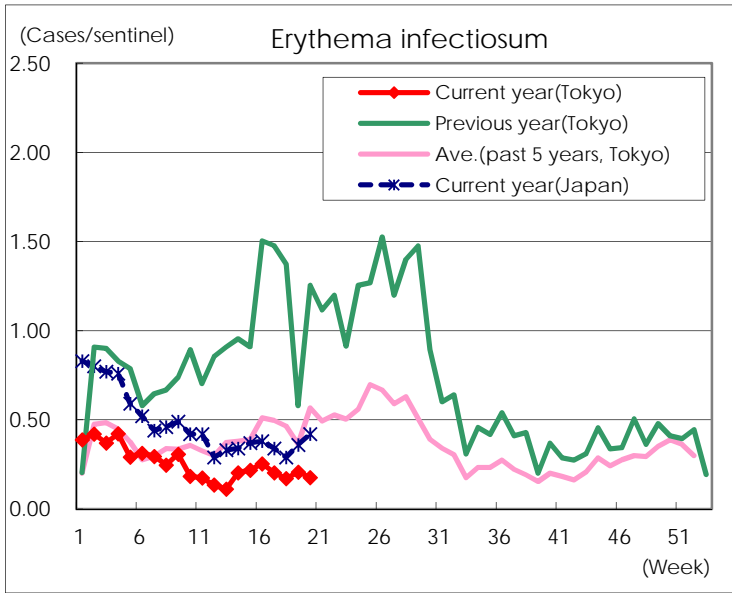
Number of patients with the diseases to be reported
by the designated clinics and hospitals

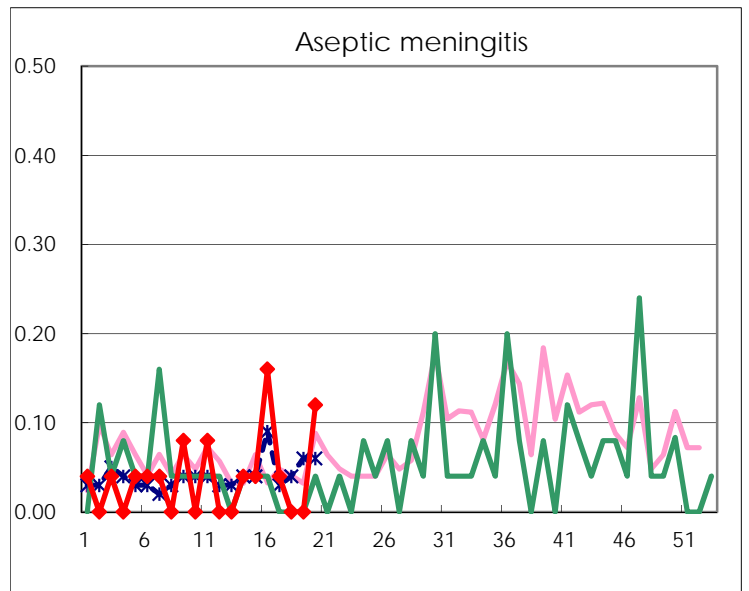
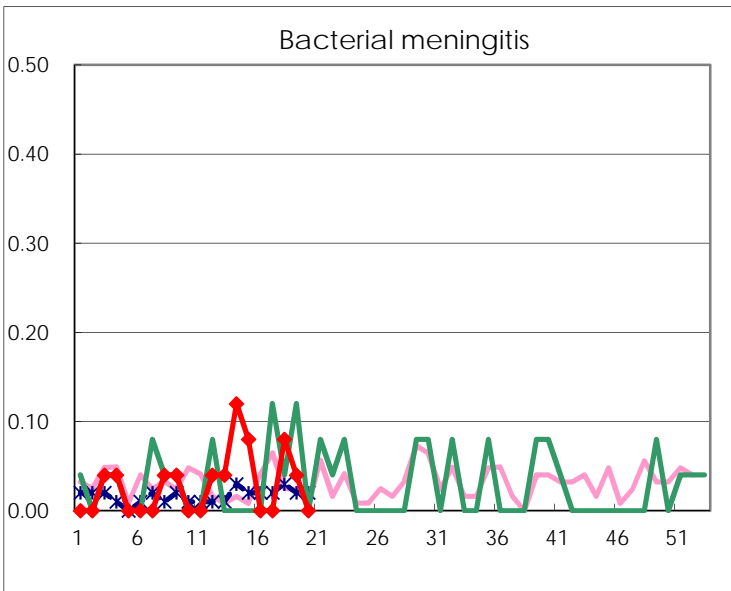
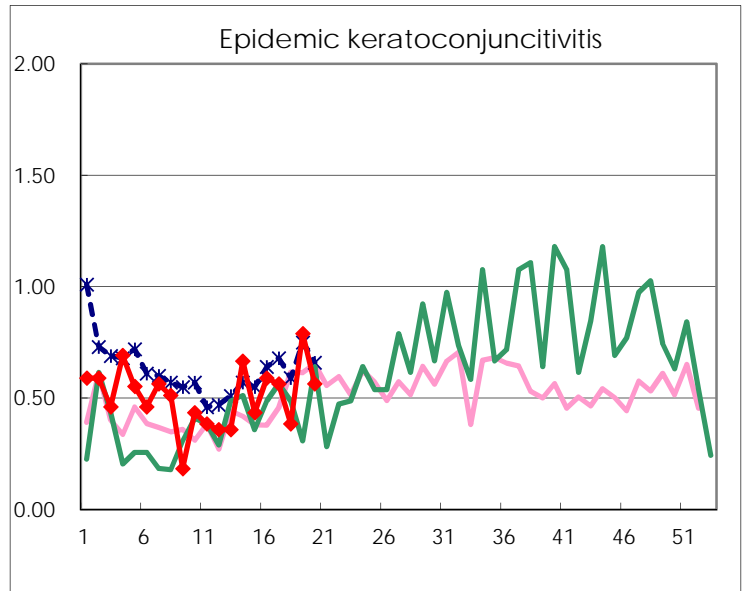
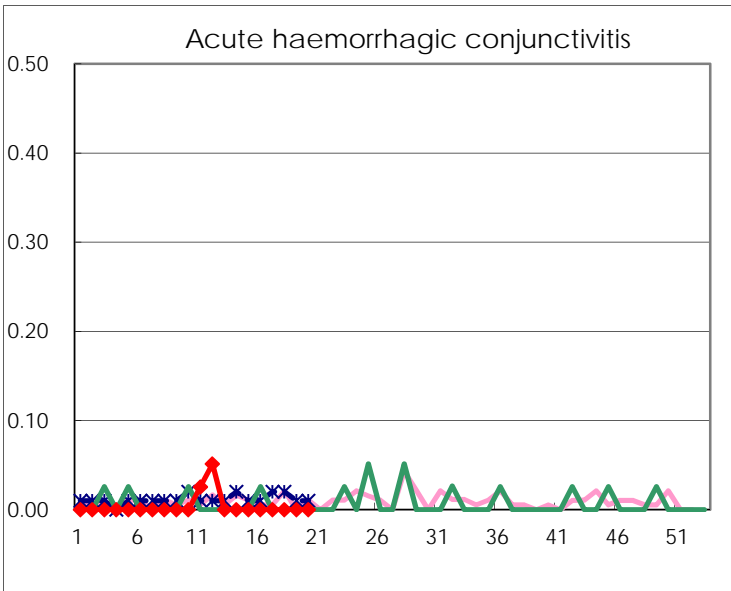
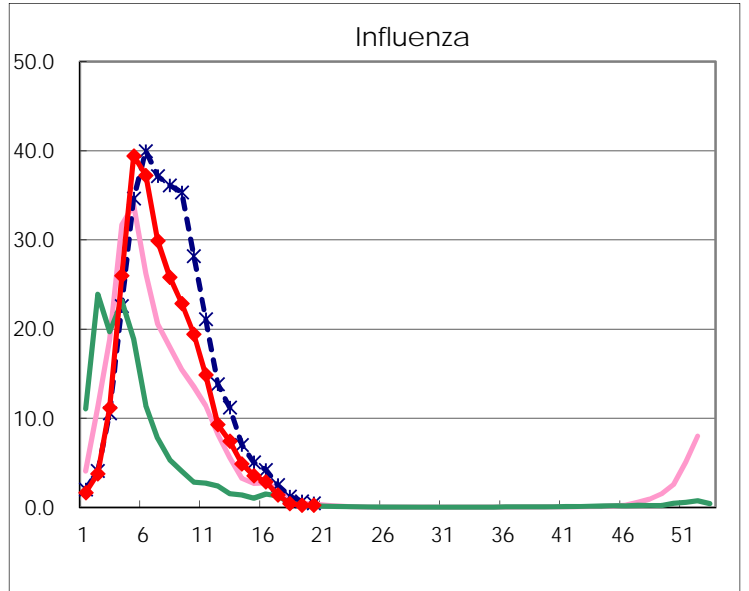
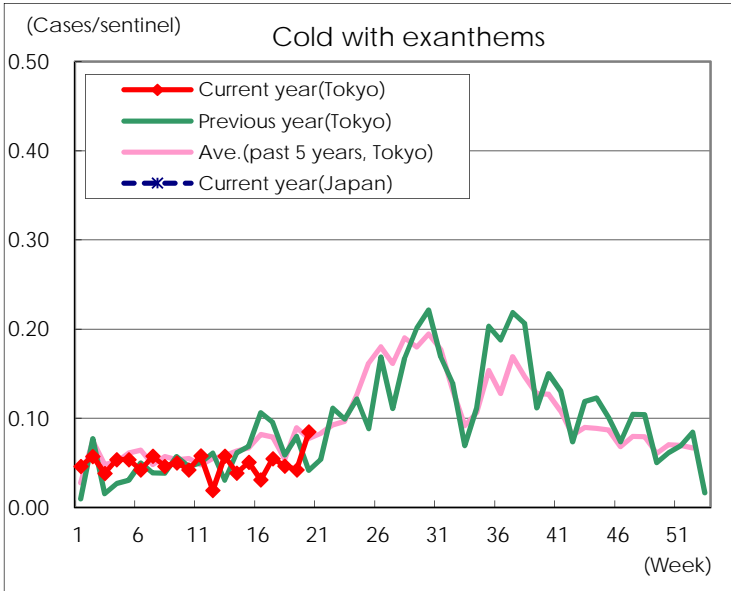
Diseases	Tokyo				
	17th	18th	19th	20th	/sentinel
Respiratory syncytial virus infection	23	7	14	15	0.06
Pharyngoconjunctival fever	118	98	147	134	0.52
Group A streptococcal pharyngitis	718	532	694	787	3.03
Infectious gastroenteritis	1,403	1,057	1,441	1,678	6.45
Chickenpox	87	86	123	90	0.35
Hand, foot, and mouth disease	11	14	19	21	0.08
Erythema infectiosum	52	44	54	46	0.18
Exanthem subitum	158	139	196	206	0.79
Pertussis	1		2	2	0.01
Herpangina	5	11	20	17	0.07
Mumps	123	107	144	158	0.61
Kawasaki disease	5	6	4	3	0.01
Cold with exanthems	14	12	11	22	0.08
Influenza	581	176	99	100	0.24
Acute hemorrhagic conjunctivitis					
Epidemic keratoconjunctivitis	22	15	30	22	0.56
Bacterial meningitis		2	1		
Aseptic meningitis	1			3	0.12
Mycoplasma pneumonia	10	3	7	7	0.28
Chlamydial pneumonia (excluding psittacosis)	1		1		
Infectious gastroenteritis (only by Rotavirus)	9	2		4	0.16
Influenza-Associated Hospitalizations	5	4	2		

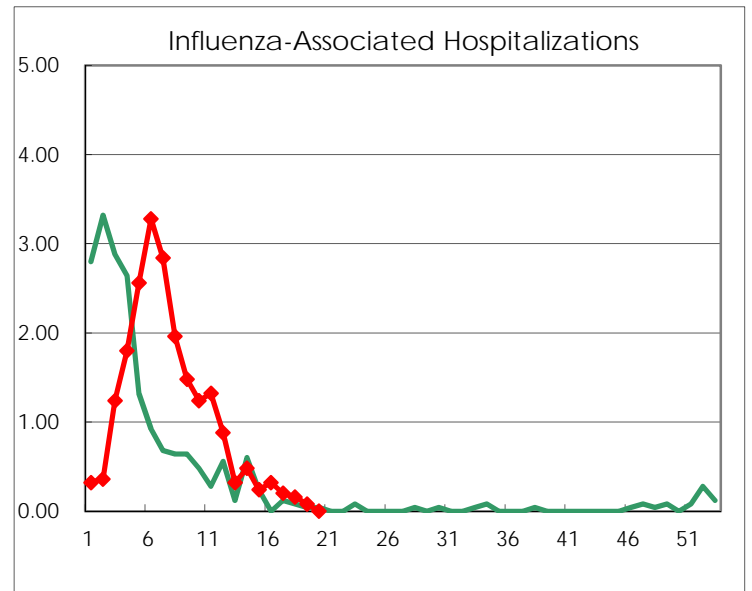
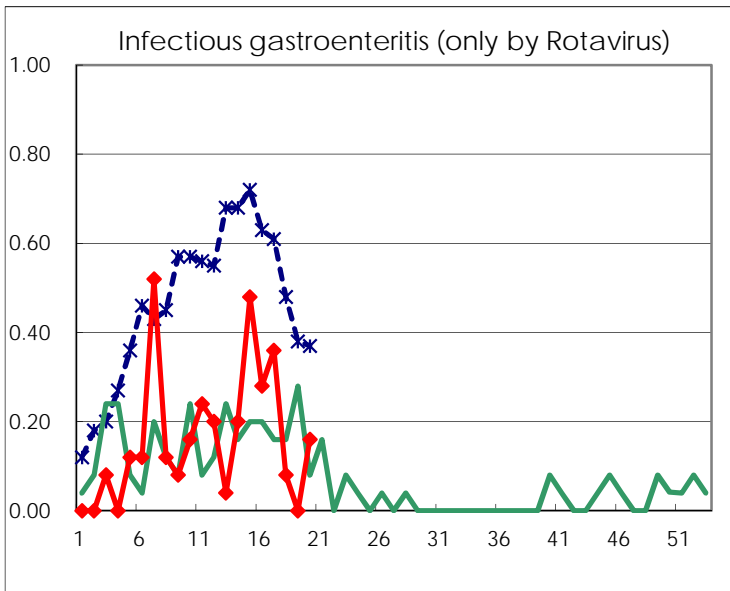
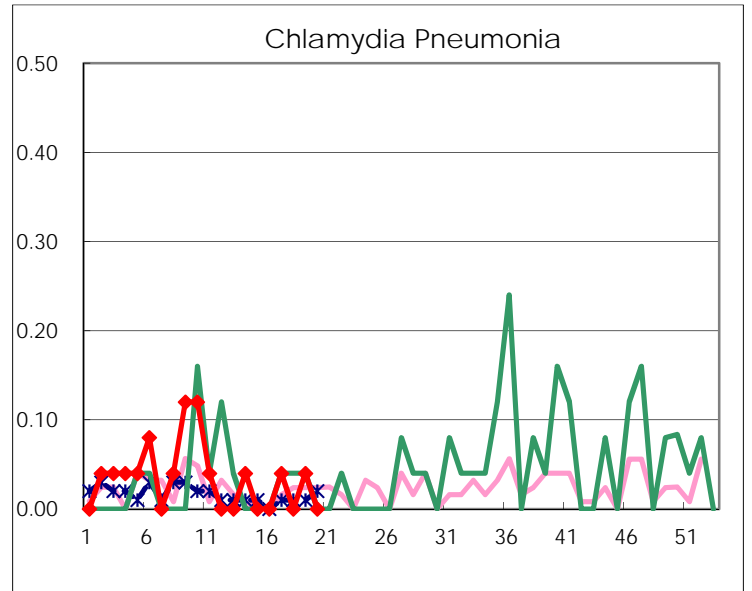
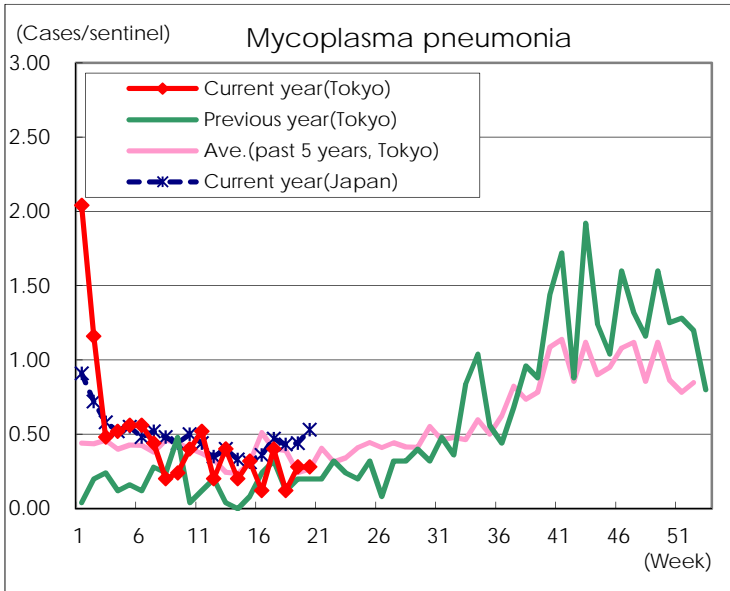
(Blank means 0.)

Disease Trend Graph (weekly reported cases per sentinel in comparison)









Number of sentinel facilities for weekly reporting		
Types of sentinels	Number of sentinels	Sentinels having reported
Pediatric	264	260
Influenza	419	413
Ophthalmic	39	39
Specially-designated	25	25