

2 June 2016 / Number 21

Surveillance System in Tokyo, Japan

The infectious diseases which all physicians must report

All physicians must report to health centers the incidence of the diseases which are shown at page one. Health centers electronically report the individual cases to Tokyo Metropolitan Infectious Disease Surveillance Center.

The infectious diseases required to be reported by the sentinels

The numbers of patients who visit the sentinel clinics or hospitals during a week are reported to health centers in Tokyo. And they electronically report the numbers to Tokyo Metropolitan Infectious Disease Surveillance Center. We have about 500 sentinel clinics and hospitals in Tokyo.

Tokyo Metropolitan Institute of Public Health

TEL:81-3-3363-3213 FAX:81-3-5332-7365

e-mail:www@tokyo-eiken.go.jp

URL:idsc.tokyo-eiken.go.jp/

Number of patients with the diseases which all physicians must report

Category	Diseases	Tokyo					Japan	
		18th	19th	20th	21st	Cum 2016	21st	Cum 2016
I	Ebola hemorrhagic fever							
	Crimean-Congo hemorrhagic fever							
	Smallpox							
	South American hemorrhagic fever							
	Plague							
	Marburg disease							
II	Lassa fever							
	Acute poliomyelitis							
	Tuberculosis	41	83	83	65	1,441	439	9,204
	Diphtheria							
	Severe Acute Respiratory Syndrome(SARS)							
	Middle East Respiratory Syndrome (MERS)							
III	Avian influenza H5N1							
	Avian influenza H7N9							
	Cholera							1
	Shigellosis			1	1	17	3	50
	Enterohemorrhagic Escherichia coli infection	5	1	3	5	46	36	353
IV	Typhoid fever					9		20
	Paratyphoid fever					4		8
	Hepatitis E		2	1	1	21	4	182
	West Nile fever							
	Hepatitis A	1	4		2	39	7	148
	Echinococcosis							5
	Yellow fever							
	Psittacosis						1	2
	Omsk hemorrhagic fever							
	Relapsing fever						1	2
	Kyasanur forest disease							
	Q fever							
	Rabies							
	Coccidioidomycosis	1				1		1
	Monkeypox							
	Zika virus infection							6
	Severe Fever with Thrombocytopenia Syndrome						3	15
	Hemorrhagic fever with renal syndrome							
	Western equine encephalitis							
	Tick-borne encephalitis							
	Anthrax							
	Chikungunya fever					2		2
	Scrub typhus(Tsutsugamushi disease)						5	67
	Dengue fever	2	2	2		39	4	137
	Eastern equine encephalitis							
	Avian influenza (excluding H5N1 and H7N9)							
	Nipah virus infection							
	Japanese spotted fever						3	40
	Japanese encephalitis							
	Hantavirus pulmonary syndrome							
Herpes B virus infection								
Glanders								
Brucellosis								
Venezuelan equine encephalitis								
Hendra virus infection								
Epidemic typhus								
Botulism					1		1	
Malaria					6		17	
Tularemia								
Lyme disease						1	1	
Lyssavirus infection(excluding rabies)								
Rift valley fever								
Melioidosis								
Legionellosis		2	5	3	42	33	445	
Leptospirosis							3	
Rocky mountain spotted fever								

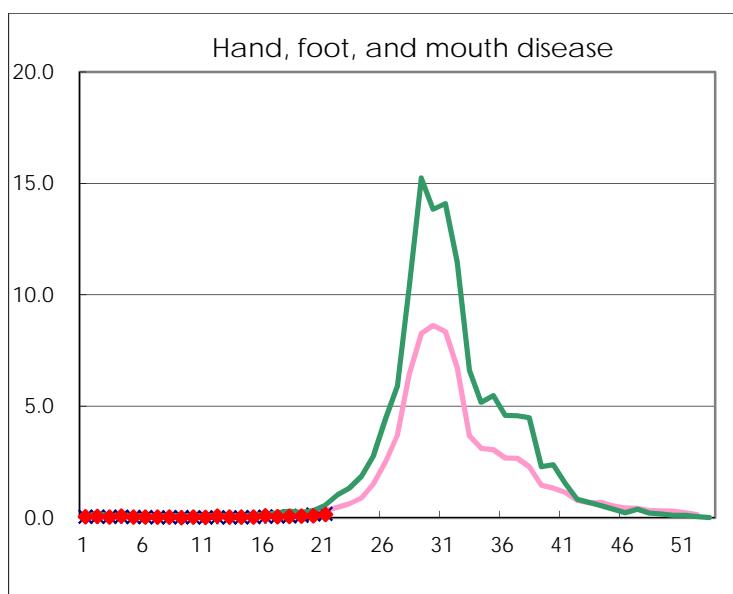
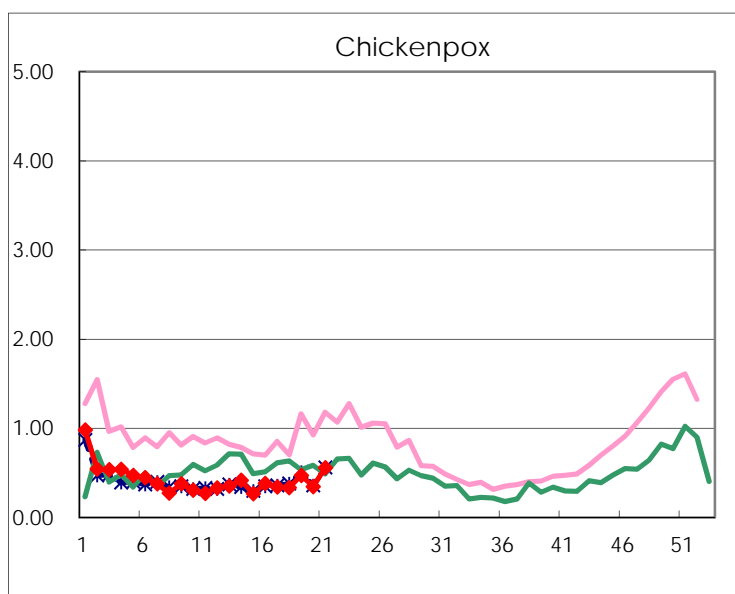
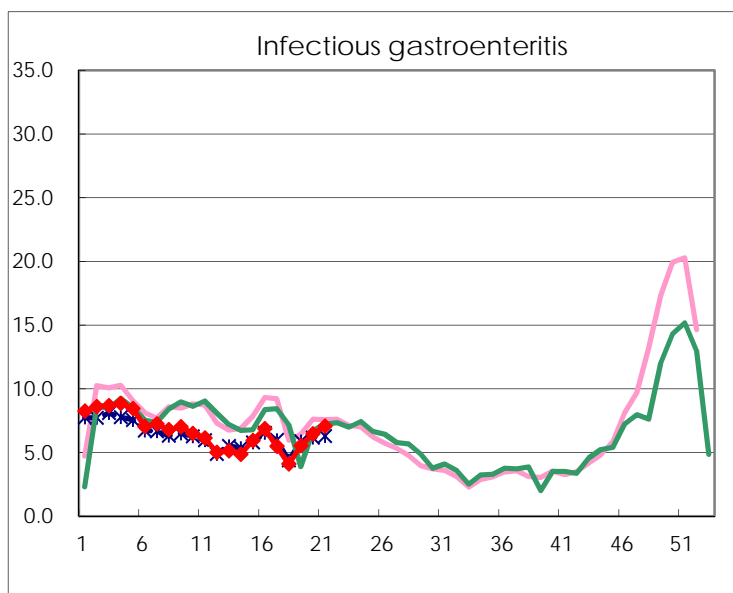
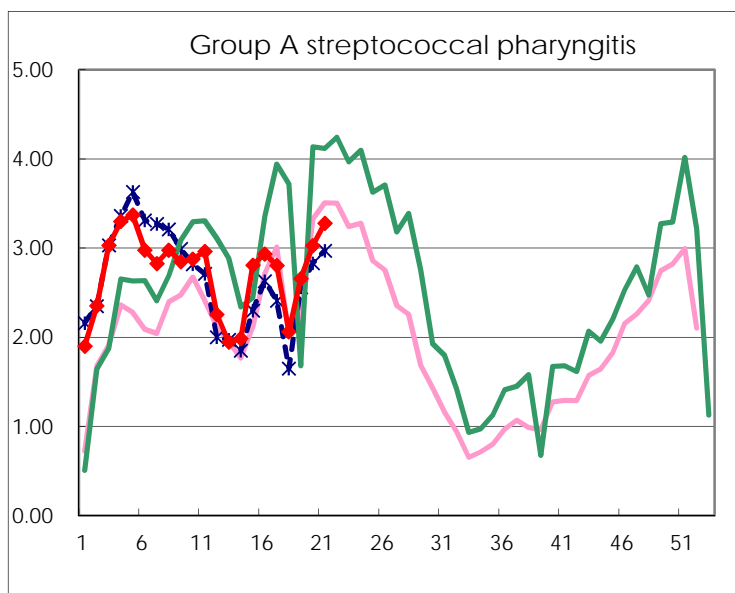
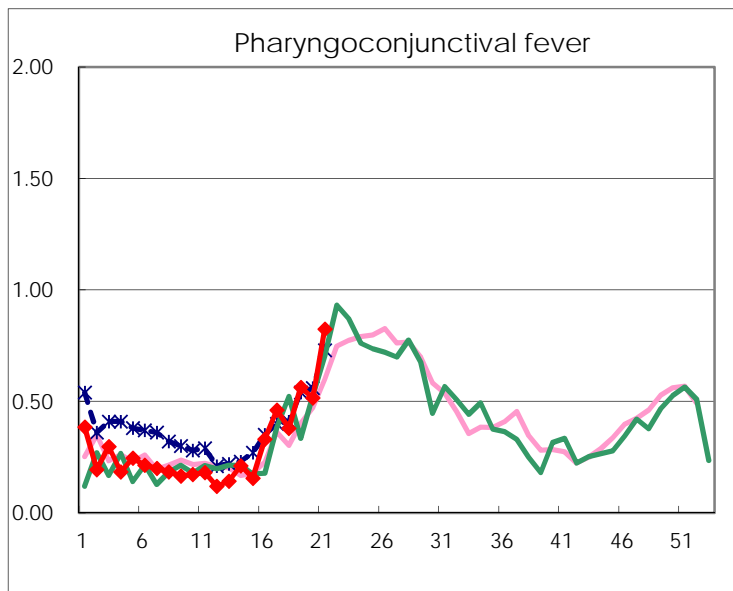
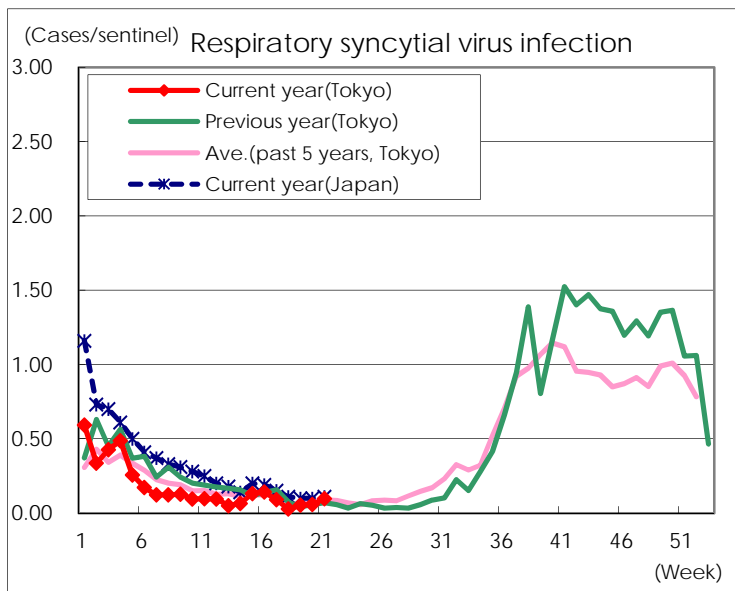
Category	Diseases	Tokyo				Japan		
		18th	19th	20th	21st	Cum 2016	21st	Cum 2016
V	Amebiasis	6	3	5		87	9	473
	Viral hepatitis(excluding hepatitis A and E)		4			20	2	95
	CRE infection	4	3	5	2	77	16	535
	Acute encephalitis(excluding JE and WNE)		1	4	1	54	5	405
	Cryptosporidiosis						1	6
	Creutzfeldt-Jakob disease					9		70
	Severe invasive streptococcal infections(TSLS)				2	29	7	209
	Acquired immunodeficiency syndrome (AIDS)	3	8	8	9	190	15	555
	Giardiasis					6		23
	Invasive <i>Haemophilus influenzae</i> disease				1	17	5	138
	Invasive meningococcal disease					1		22
	Invasive pneumococcal disease	7	12	10	6	181	46	1,350
	Varicella (limited to hospitalized case)	2	1			18	6	115
	Congenital rubella syndrome							
	Syphilis	13	49	37	34	663	55	1,514
	Disseminated cryptococcosis					9	1	48
	Tetanus			1		3	1	40
	Vancomycin-resistant <i>S. aureus</i> infection							
	Vancomycin-resistant Enterococcus infection							17
	Rubella		1	1		10	7	50
Measles		2			3		8	
MDRA infection			1		1		15	

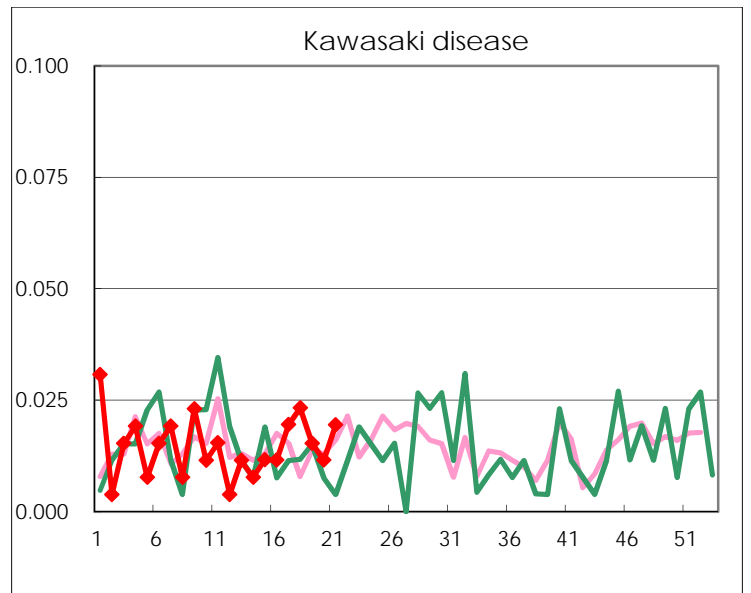
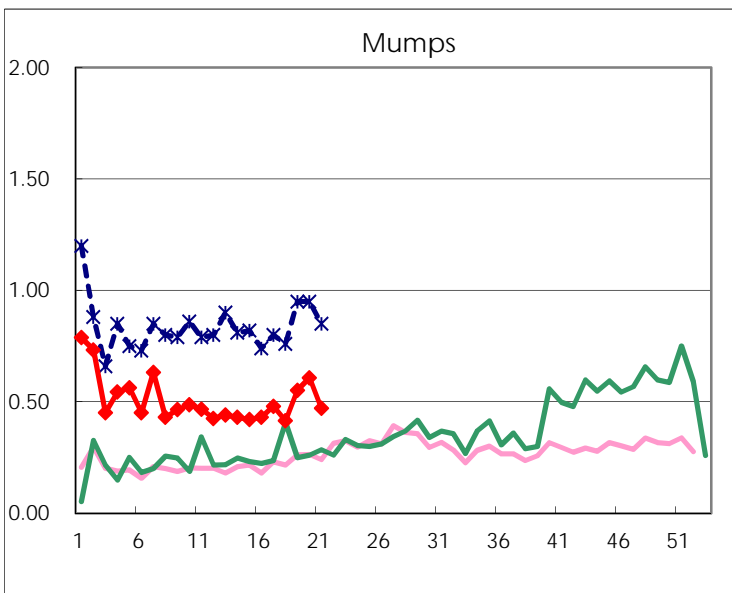
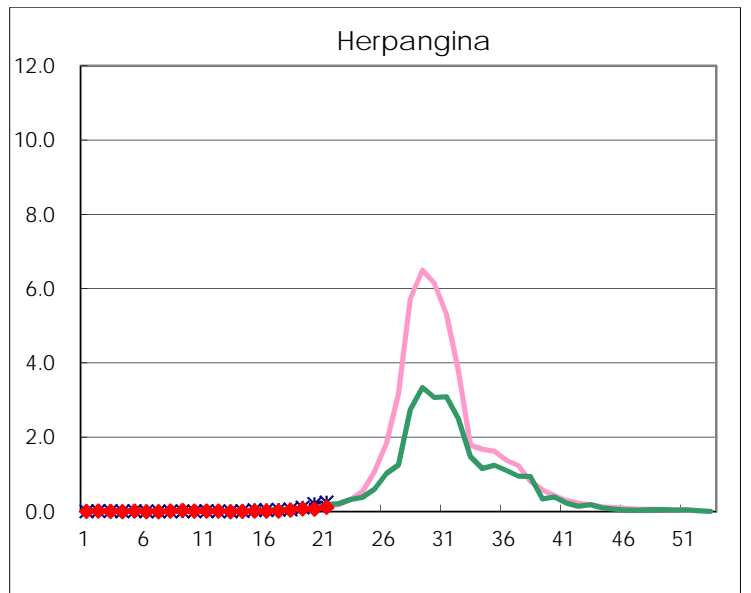
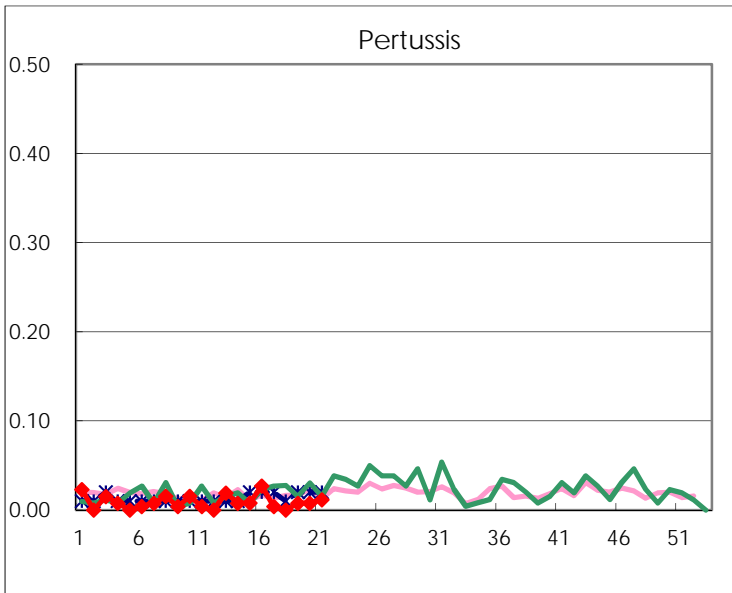
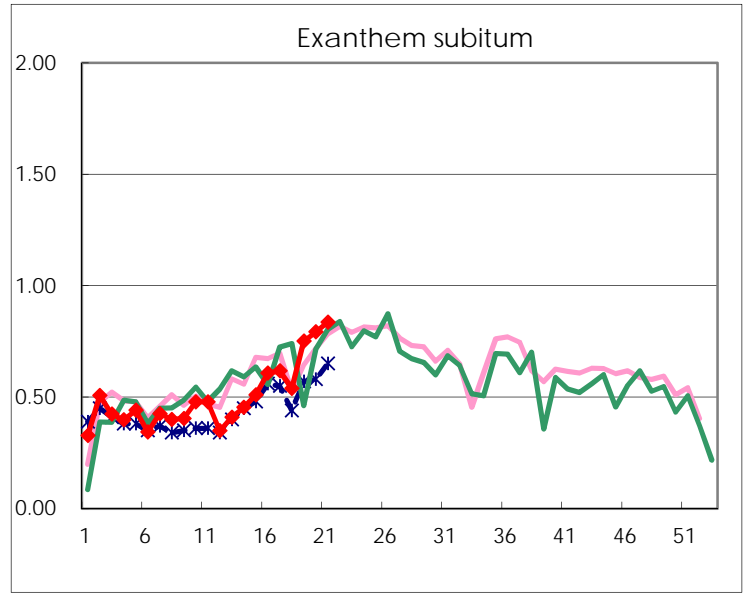
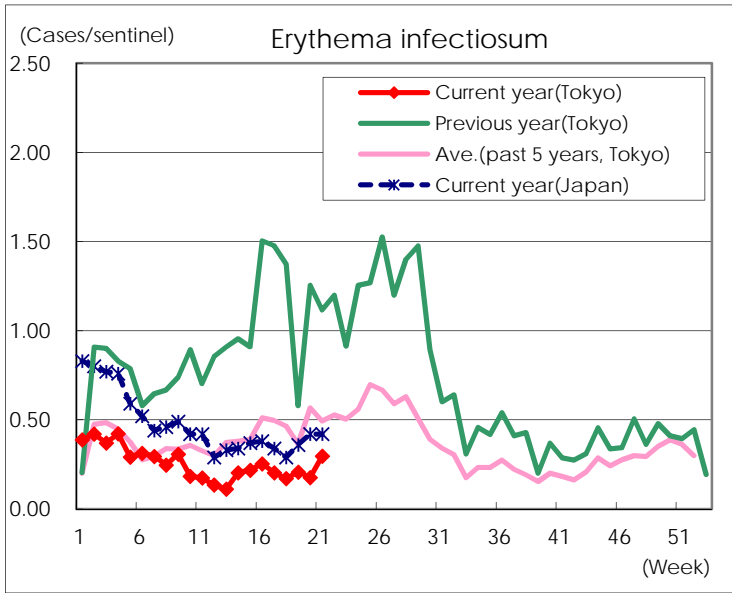
Number of patients with the diseases to be reported
by the designated clinics and hospitals

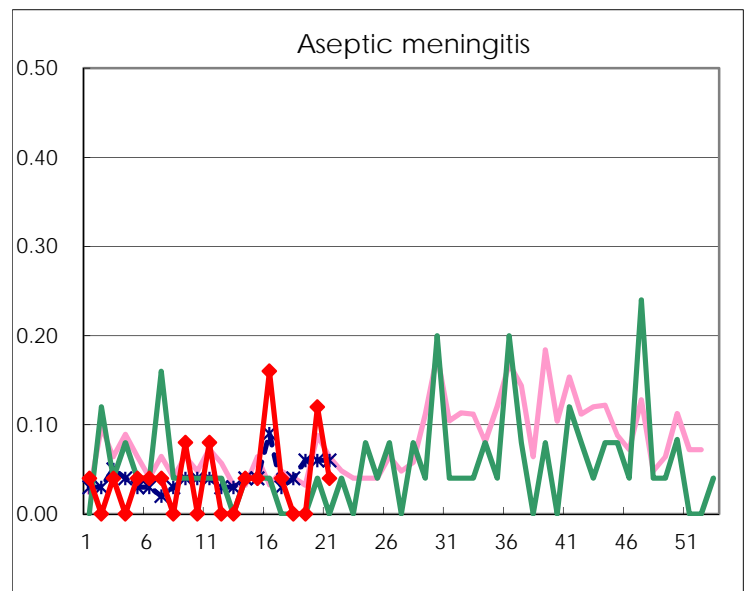
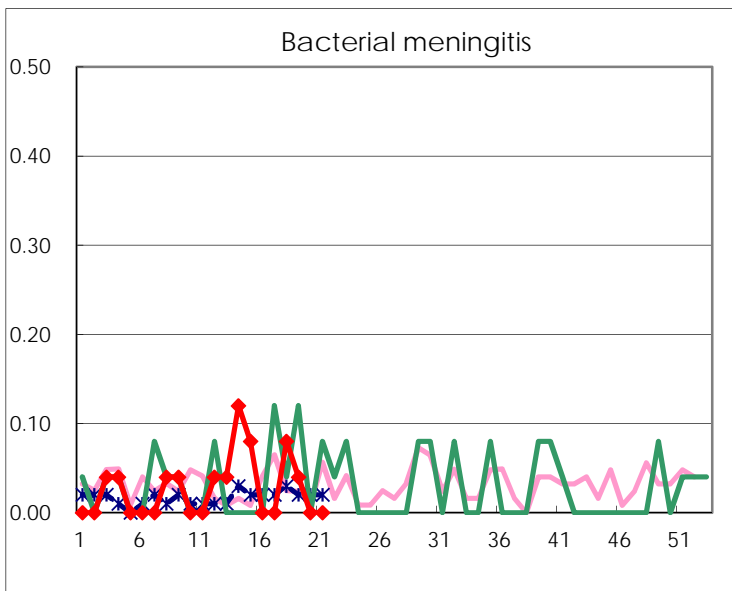
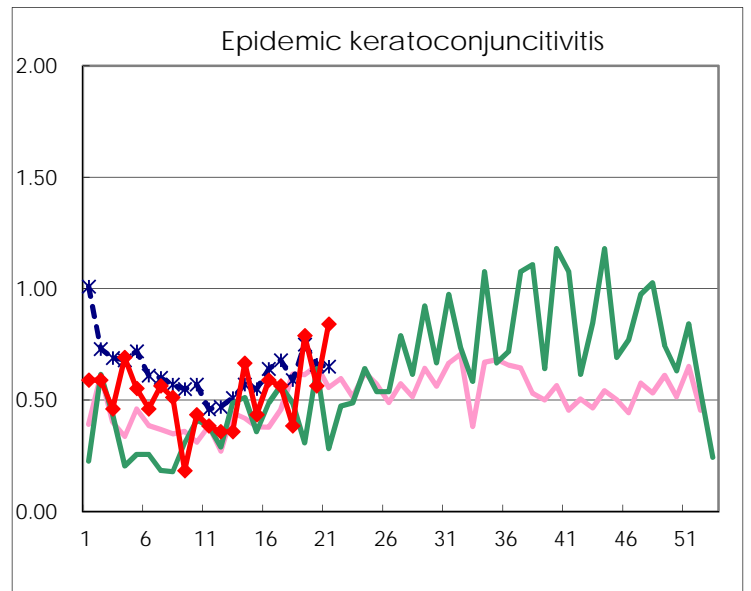
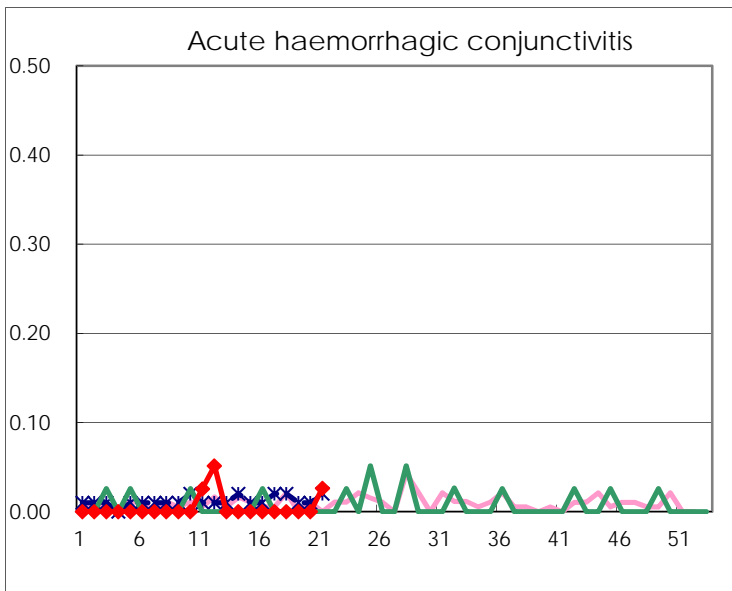
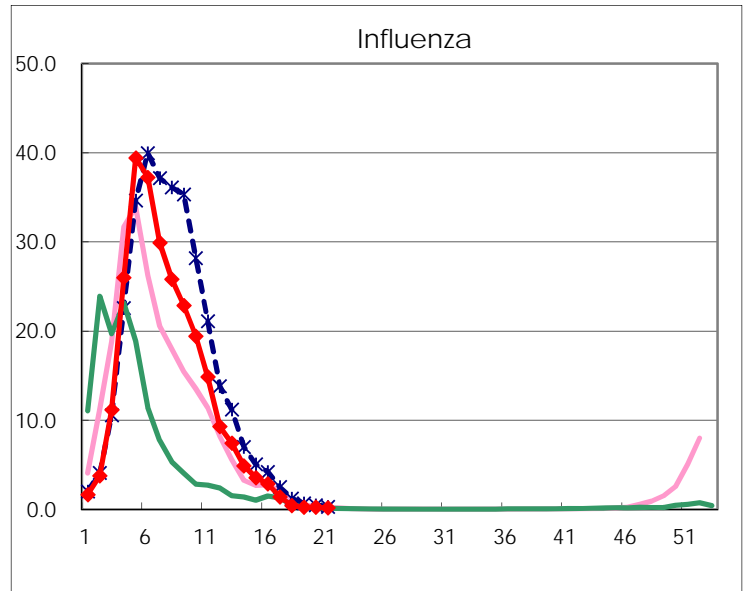
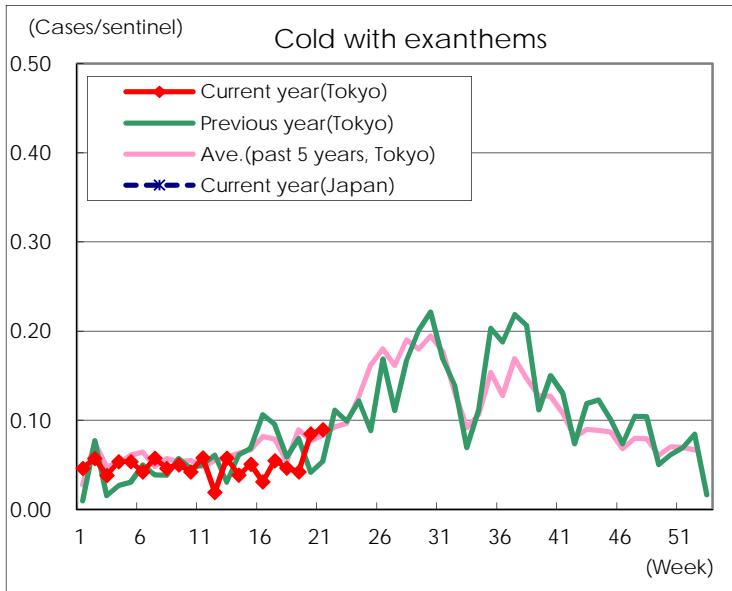
Diseases	Tokyo				
	18th	19th	20th	21st	/sentinel
Respiratory syncytial virus infection	7	14	15	25	0.10
Pharyngoconjunctival fever	98	147	134	212	0.82
Group A streptococcal pharyngitis	532	694	787	843	3.28
Infectious gastroenteritis	1,057	1,441	1,678	1,814	7.06
Chickenpox	86	123	90	143	0.56
Hand, foot, and mouth disease	14	19	21	37	0.14
Erythema infectiosum	44	54	46	76	0.30
Exanthem subitum	139	196	206	215	0.84
Pertussis		2	2	3	0.01
Herpangina	11	20	17	31	0.12
Mumps	107	144	158	121	0.47
Kawasaki disease	6	4	3	5	0.02
Cold with exanthems	12	11	22	23	0.09
Influenza	176	99	100	72	0.18
Acute hemorrhagic conjunctivitis				1	0.03
Epidemic keratoconjunctivitis	15	30	22	32	0.84
Bacterial meningitis	2	1			
Aseptic meningitis			3	1	0.04
Mycoplasma pneumonia	3	7	7	5	0.20
Chlamydial pneumonia (excluding psittacosis)		1		1	0.04
Infectious gastroenteritis (only by Rotavirus)	2		4	2	0.08
Influenza-Associated Hospitalizations	4	2		1	0.04

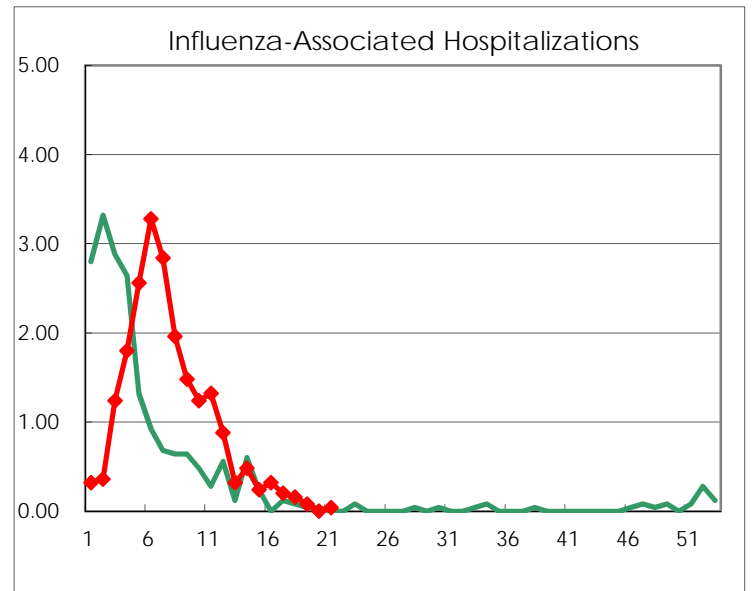
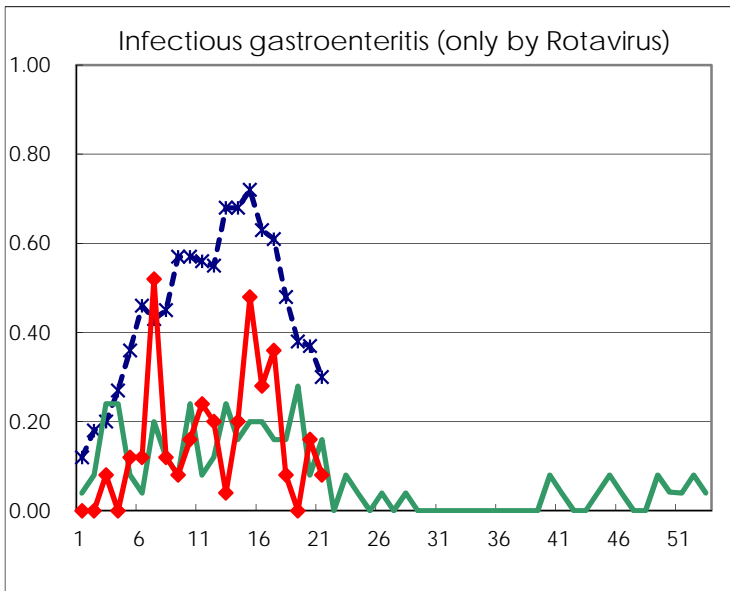
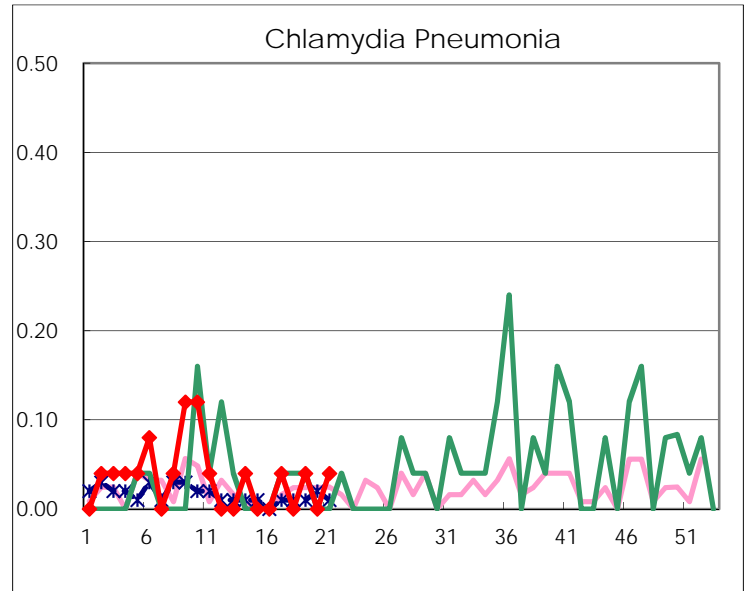
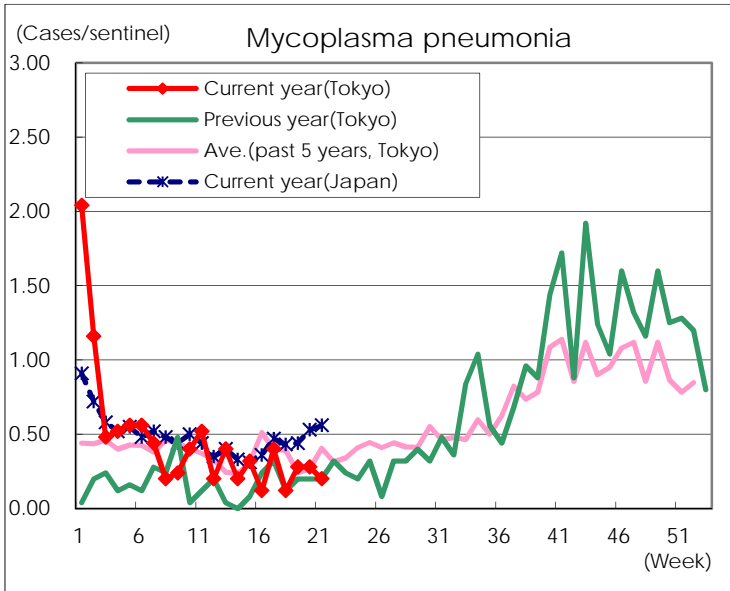
(Blank means 0.)

Disease Trend Graph (weekly reported cases per sentinel in comparison)









Number of sentinel facilities for weekly reporting		
Types of sentinels	Number of sentinels	Sentinels having reported
Pediatric	264	257
Influenza	419	408
Ophthalmic	39	38
Specially-designated	25	25