

**9 June 2016 / Number 22**

## Surveillance System in Tokyo, Japan

The infectious diseases which all physicians must report

All physicians must report to health centers the incidence of the diseases which are shown at page one. Health centers electronically report the individual cases to Tokyo Metropolitan Infectious Disease Surveillance Center.

The infectious diseases required to be reported by the sentinels

The numbers of patients who visit the sentinel clinics or hospitals during a week are reported to health centers in Tokyo. And they electronically report the numbers to Tokyo Metropolitan Infectious Disease Surveillance Center. We have about 500 sentinel clinics and hospitals in Tokyo.

Tokyo Metropolitan Institute of Public Health

TEL:81-3-3363-3213 FAX:81-3-5332-7365

e-mail:[www@tokyo-eiken.go.jp](mailto:www@tokyo-eiken.go.jp)

URL:[idsc.tokyo-eiken.go.jp/](http://idsc.tokyo-eiken.go.jp/)

---

Number of patients with the diseases which all physicians must report

Category	Diseases	Tokyo					Japan	
		19th	20th	21st	22nd	Cum 2016	22nd	Cum 2016
I	Ebola hemorrhagic fever							
	Crimean-Congo hemorrhagic fever							
	Smallpox							
	South American hemorrhagic fever							
	Plague							
	Marburg disease							
	Lassa fever							
II	Acute poliomyelitis							
	Tuberculosis	83	83	65	75	1,515	413	9,699
	Diphtheria							
	Severe Acute Respiratory Syndrome(SARS)							
	Middle East Respiratory Syndrome (MERS)							
	Avian influenza H5N1							
	Avian influenza H7N9							
III	Cholera						2	3
	Shigellosis		1	1	2	19	3	54
	Enterohemorrhagic Escherichia coli infection	1	3	5	5	51	35	394
	Typhoid fever					9		20
	Paratyphoid fever					4		8
IV	Hepatitis E	2	1	1	2	23	4	187
	West Nile fever							
	Hepatitis A	4		2	3	42	4	153
	Echinococcosis							6
	Yellow fever							
	Psittacosis							2
	Omsk hemorrhagic fever							
	Relapsing fever							2
	Kyasanur forest disease							
	Q fever							
	Rabies							
	Coccidioidomycosis					1		1
	Monkeypox							
	Zika virus infection							6
	Severe Fever with Thrombocytopenia Syndrome						1	16
	Hemorrhagic fever with renal syndrome							
	Western equine encephalitis							
	Tick-borne encephalitis							
	Anthrax							
	Chikungunya fever					2		2
	Scrub typhus(Tsutsugamushi disease)						2	69
	Dengue fever	2	2			39	2	141
	Eastern equine encephalitis							
	Avian influenza (excluding H5N1 and H7N9)							
	Nipah virus infection							
	Japanese spotted fever						5	45
	Japanese encephalitis							
	Hantavirus pulmonary syndrome							
	Herpes B virus infection							
	Glanders							
	Brucellosis							
	Venezuelan equine encephalitis							
Hendra virus infection								
Epidemic typhus								
Botulism					1		1	
Malaria					6		17	
Tularemia								
Lyme disease							1	
Lyssavirus infection(excluding rabies)								
Rift valley fever								
Melioidosis								
Legionellosis	2	5	3	1	43	18	467	
Leptospirosis							3	
Rocky mountain spotted fever								

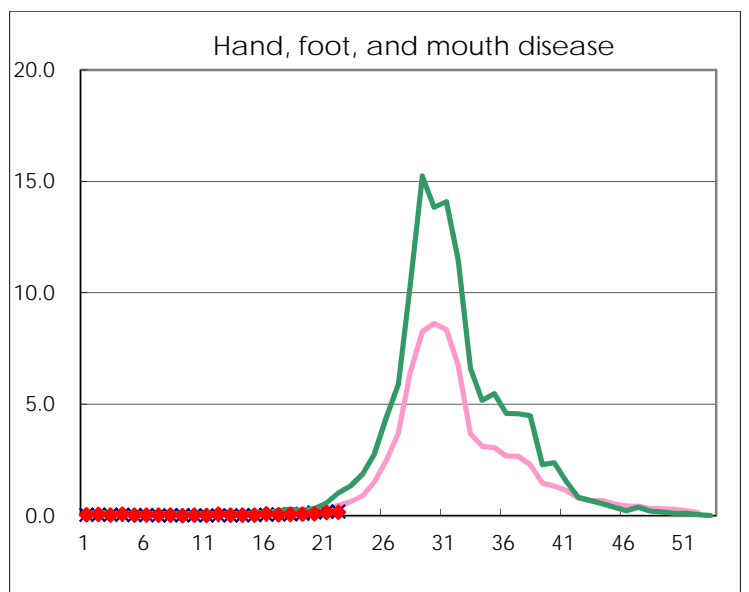
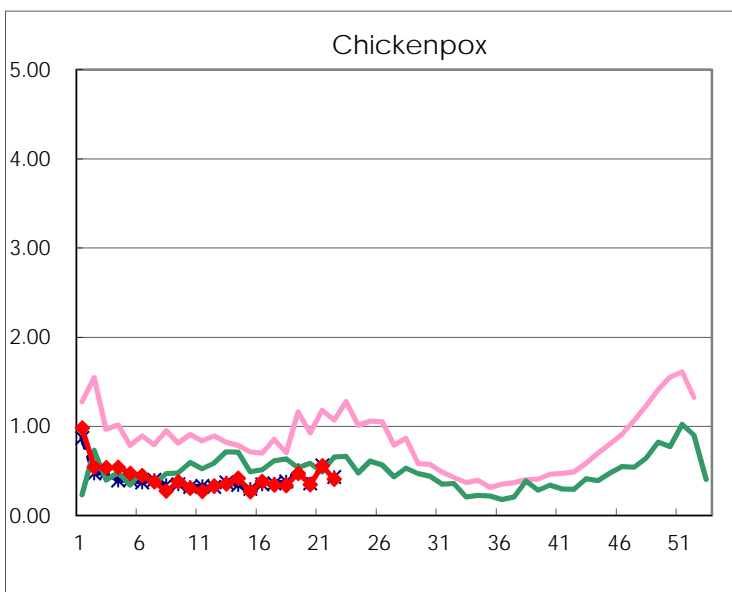
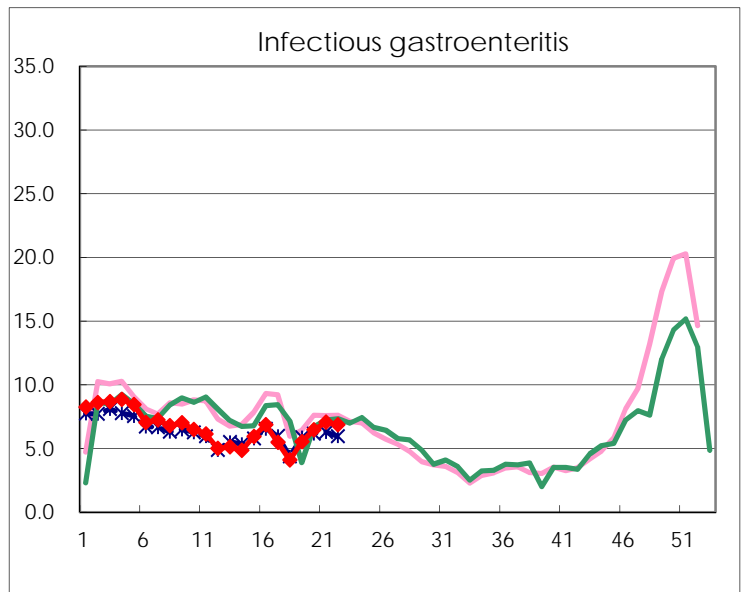
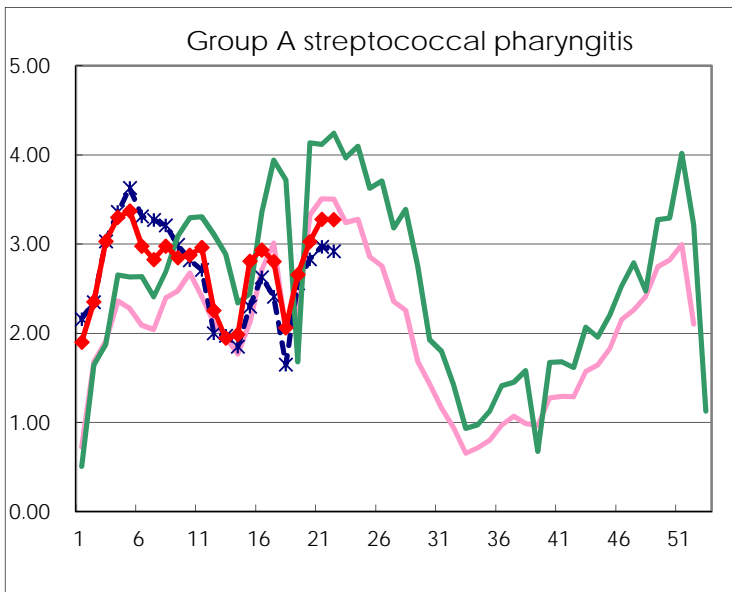
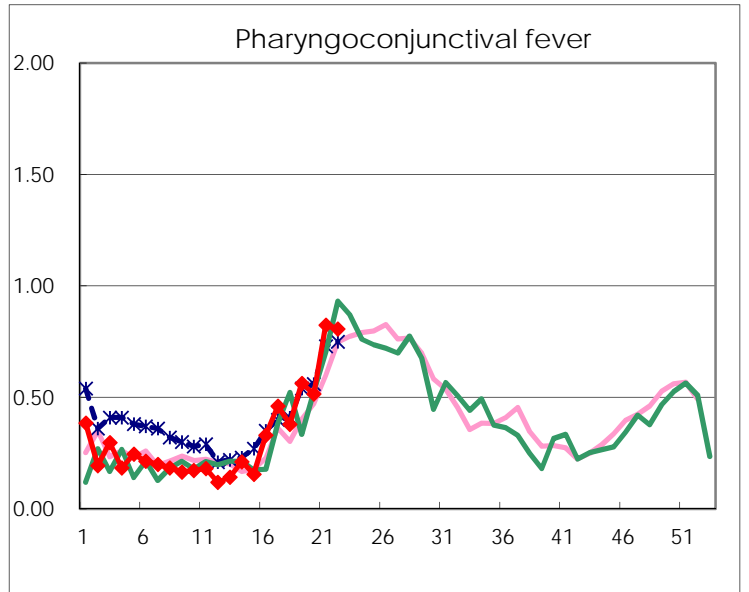
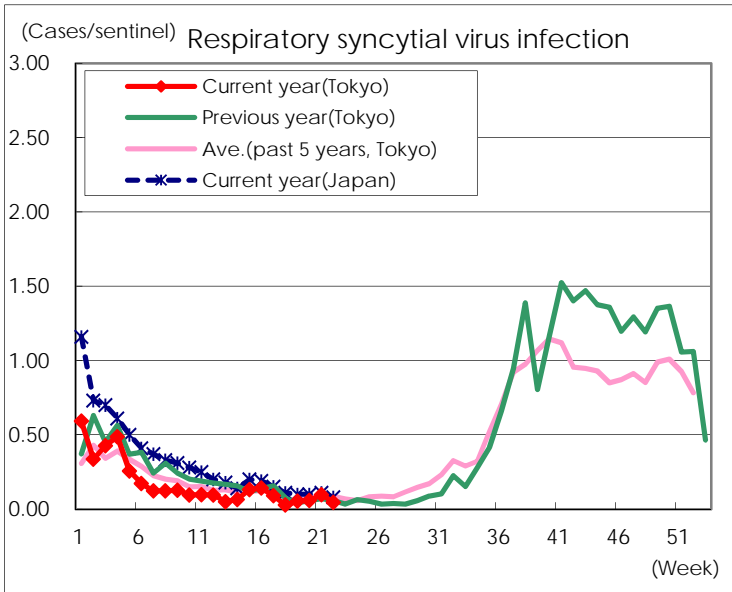
Category	Diseases	Tokyo					Japan	
		19th	20th	21st	22nd	Cum 2016	22nd	Cum 2016
V	Amebiasis	3	5		4	91	8	494
	Viral hepatitis(excluding hepatitis A and E)	4			4	24	8	109
	CRE infection	3	5	2	5	82	13	563
	Acute encephalitis(excluding JE and WNE)	1	4	1	1	55	4	412
	Cryptosporidiosis							6
	Creutzfeldt-Jakob disease					9		72
	Severe invasive streptococcal infections(TSLS)			2	1	30	8	219
	Acquired immunodeficiency syndrome (AIDS)	8	8	9	11	201	23	596
	Giardiasis				1	7	2	25
	Invasive <i>Haemophilus influenzae</i> disease			1	2	19	6	145
	Invasive meningococcal disease					1	1	23
	Invasive pneumococcal disease	12	10	6	2	183	37	1,411
	Varicella (limited to hospitalized case)	1			2	20	7	124
	Congenital rubella syndrome							
	Syphilis	49	37	34	34	697	74	1,636
	Disseminated cryptococcosis					9	1	53
	Tetanus		1			3	4	45
	Vancomycin-resistant <i>S. aureus</i> infection							
	Vancomycin-resistant Enterococcus infection							17
Rubella	2	1			11	3	54	
Measles	2				3		8	
MDRA infection		1			1		16	

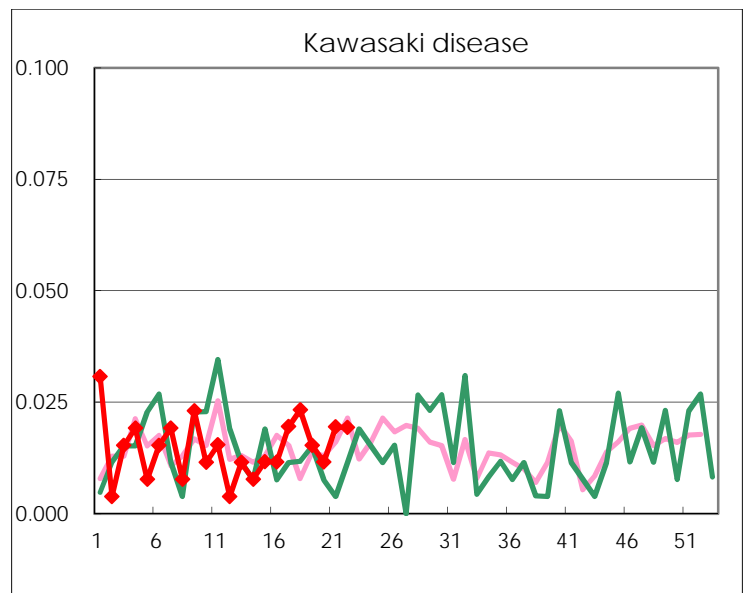
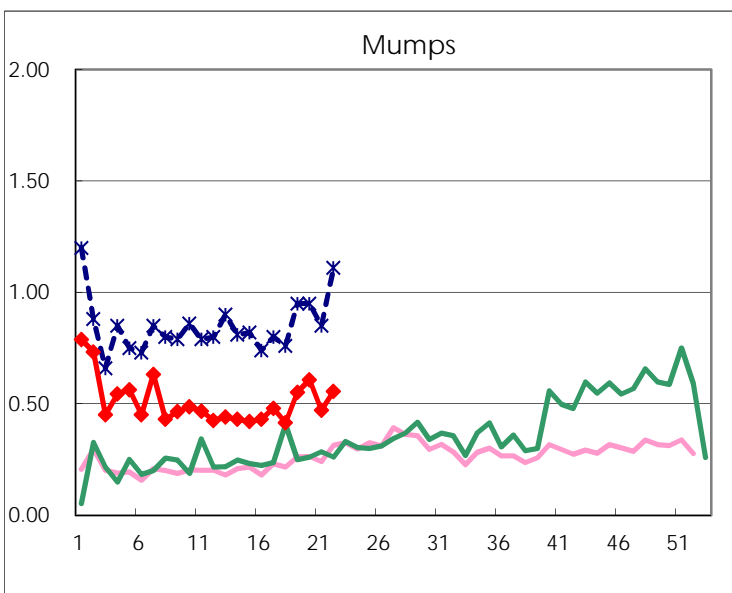
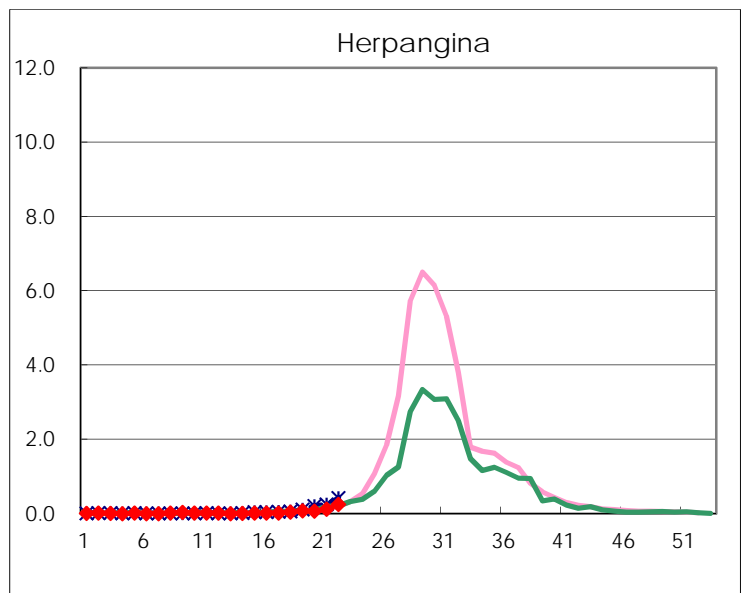
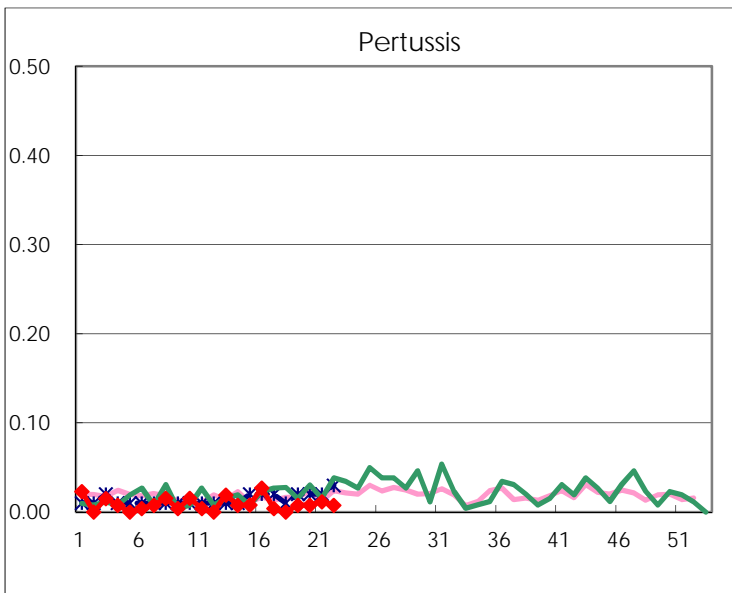
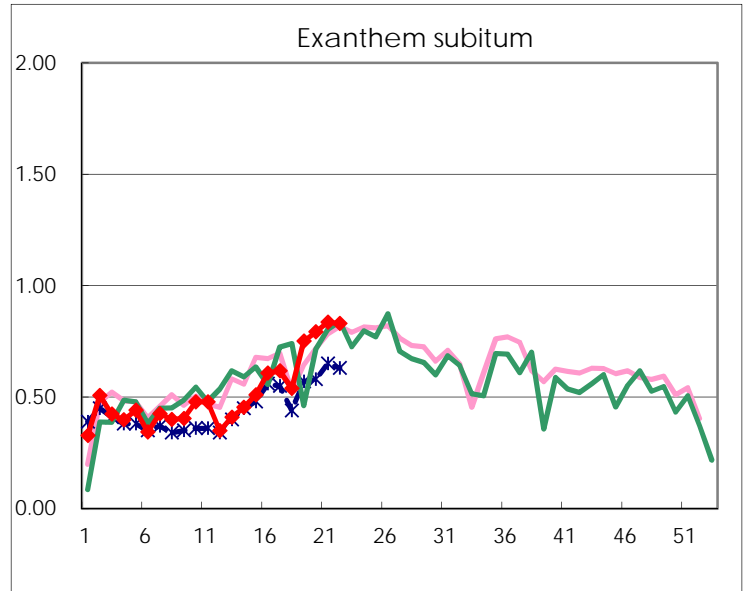
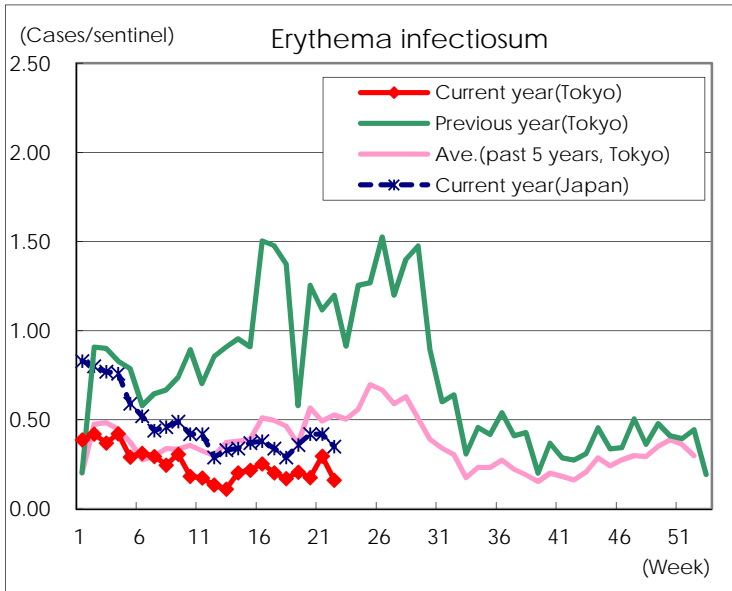
Number of patients with the diseases to be reported  
by the designated clinics and hospitals

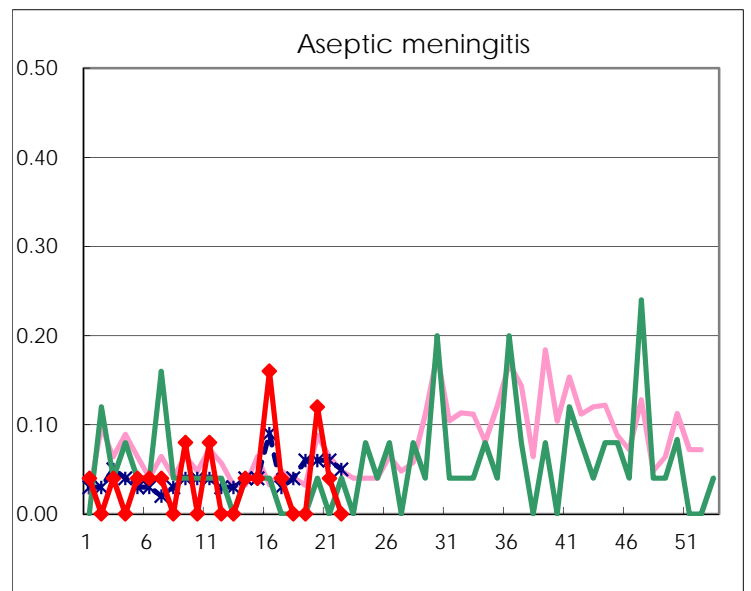
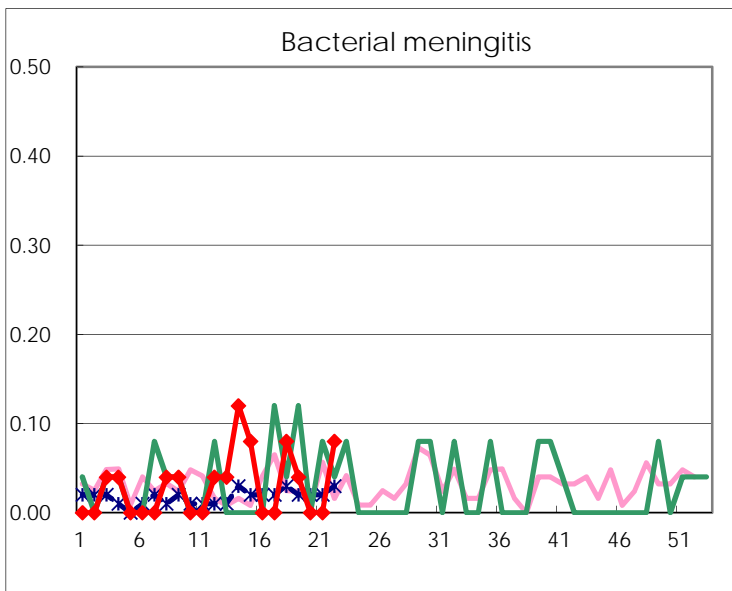
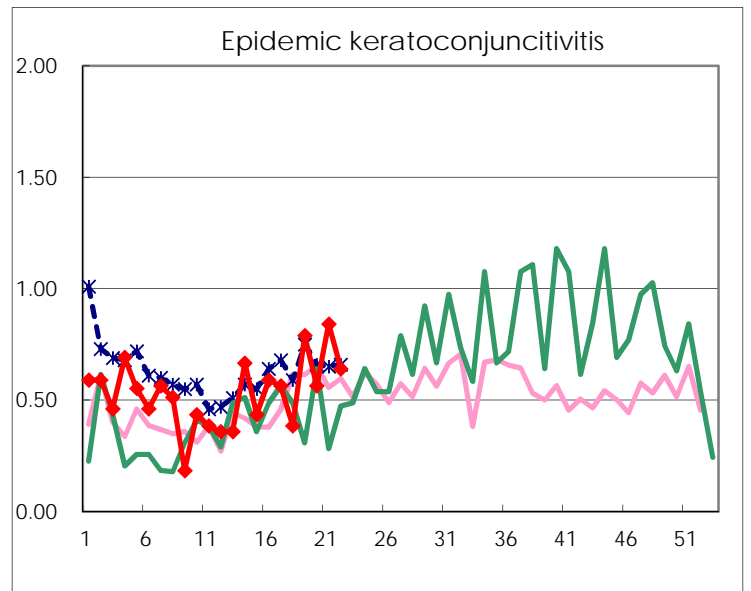
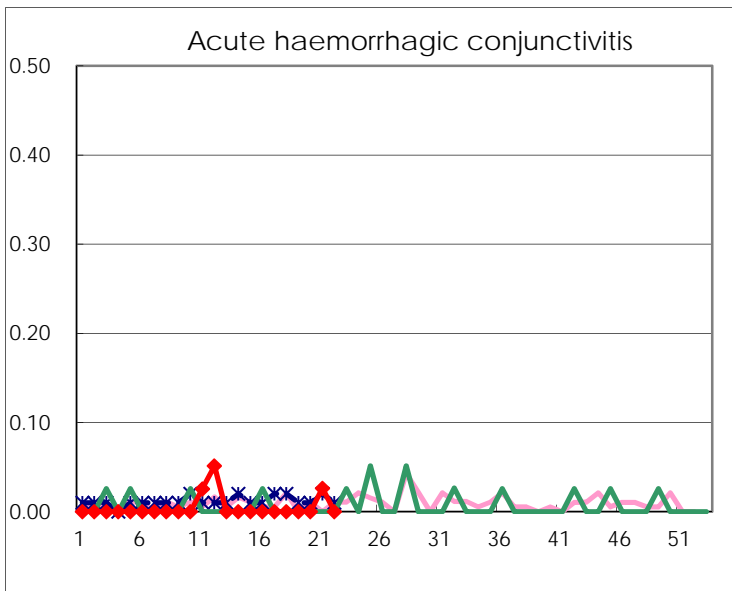
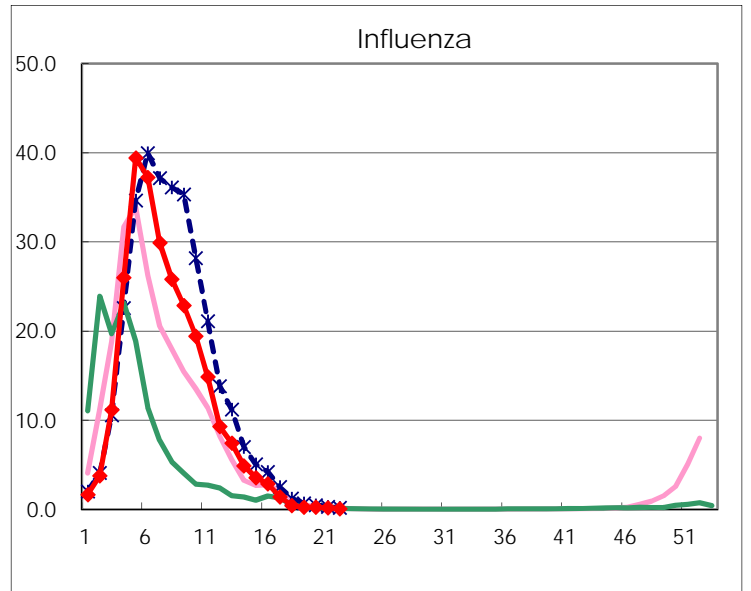
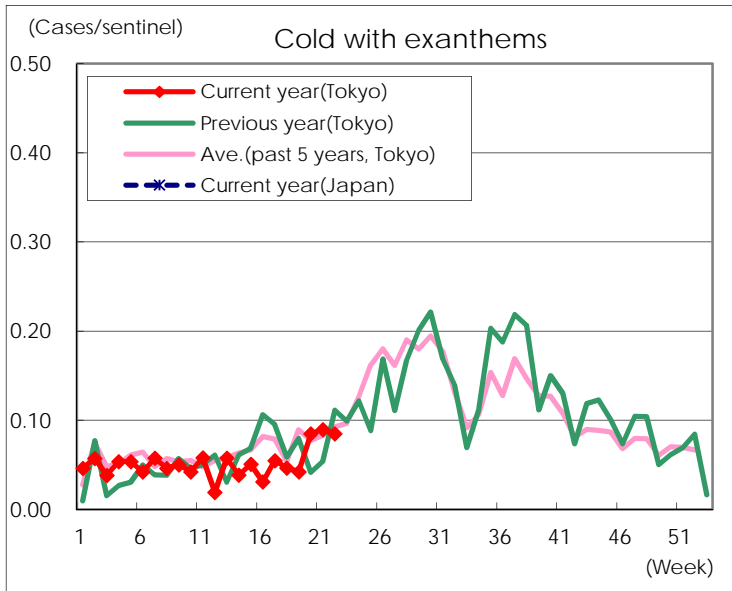
Diseases	Tokyo				
	19th	20th	21st	22nd	/sentinel
Respiratory syncytial virus infection	14	15	25	12	0.05
Pharyngoconjunctival fever	147	134	212	209	0.81
Group A streptococcal pharyngitis	694	787	843	848	3.27
Infectious gastroenteritis	1,441	1,678	1,814	1,779	6.87
Chickenpox	123	90	143	105	0.41
Hand, foot, and mouth disease	19	21	37	43	0.17
Erythema infectiosum	54	46	76	42	0.16
Exanthem subitum	196	206	215	215	0.83
Pertussis	2	2	3	2	0.01
Herpangina	20	17	31	64	0.25
Mumps	144	158	121	144	0.56
Kawasaki disease	4	3	5	5	0.02
Cold with exanthems	11	22	23	22	0.08
Influenza	99	100	72	34	0.08
Acute hemorrhagic conjunctivitis			1		
Epidemic keratoconjunctivitis	30	22	32	25	0.64
Bacterial meningitis	1			2	0.08
Aseptic meningitis		3	1		
Mycoplasma pneumonia	7	7	5	7	0.28
Chlamydial pneumonia (excluding psittacosis)	1		1	1	0.04
Infectious gastroenteritis (only by Rotavirus)		4	2	2	0.08
Influenza-Associated Hospitalizations	2		1		

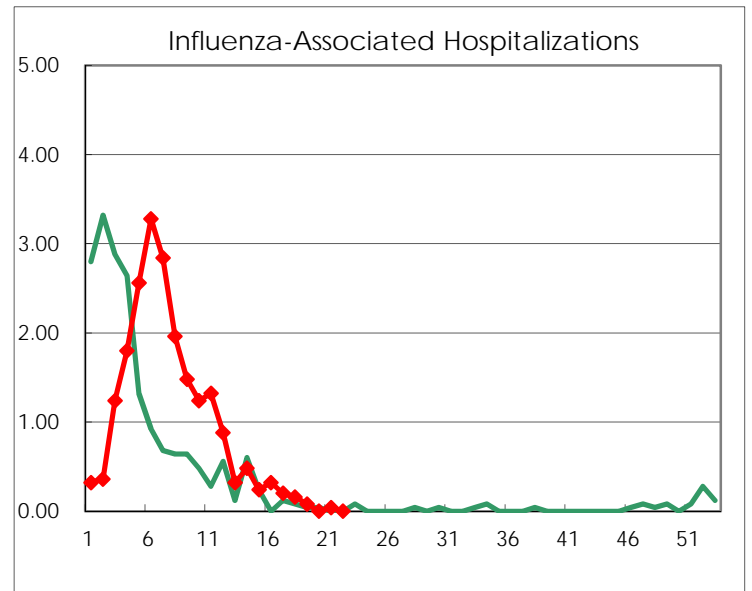
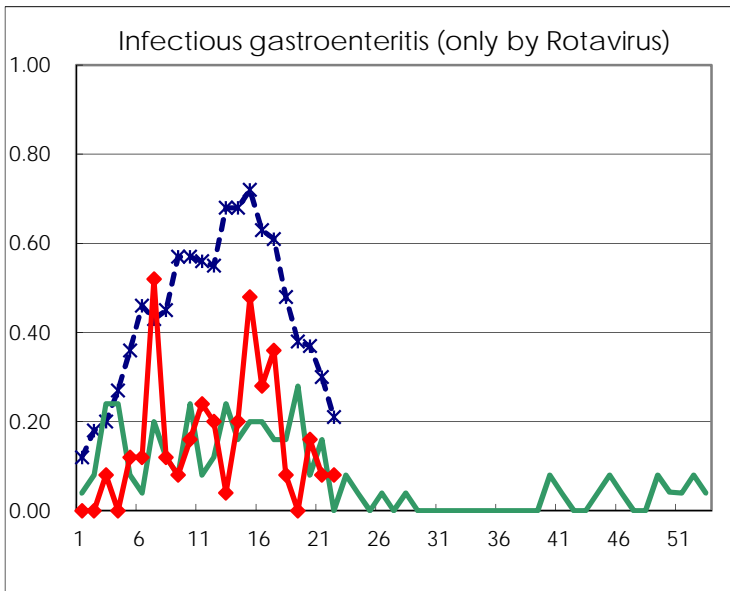
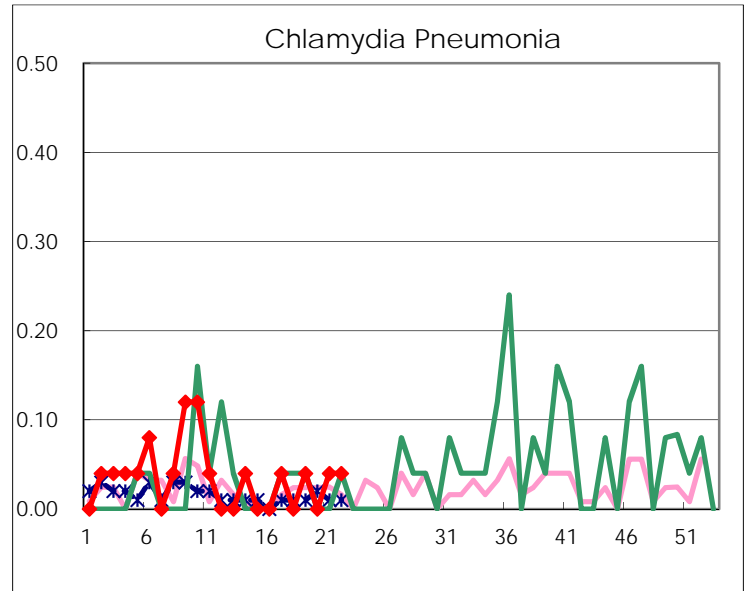
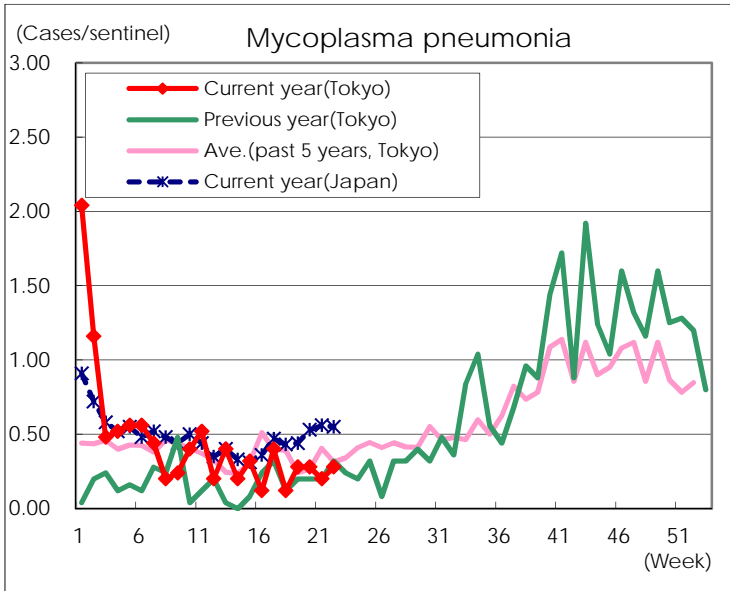
( Blank means 0. )

# Disease Trend Graph (weekly reported cases per sentinel in comparison)









Number of sentinel facilities for weekly reporting		
Types of sentinels	Number of sentinels	Sentinels having reported
Pediatric	264	259
Influenza	419	412
Ophthalmic	39	39
Specially-designated	25	25