

**16 June 2016 / Number 23**

## Surveillance System in Tokyo, Japan

The infectious diseases which all physicians must report

All physicians must report to health centers the incidence of the diseases which are shown at page one. Health centers electronically report the individual cases to Tokyo Metropolitan Infectious Disease Surveillance Center.

The infectious diseases required to be reported by the sentinels

The numbers of patients who visit the sentinel clinics or hospitals during a week are reported to health centers in Tokyo. And they electronically report the numbers to Tokyo Metropolitan Infectious Disease Surveillance Center. We have about 500 sentinel clinics and hospitals in Tokyo.

Tokyo Metropolitan Institute of Public Health

TEL:81-3-3363-3213 FAX:81-3-5332-7365

e-mail:[www@tokyo-eiken.go.jp](mailto:www@tokyo-eiken.go.jp)

URL:[idsc.tokyo-eiken.go.jp/](http://idsc.tokyo-eiken.go.jp/)

---

Number of patients with the diseases which all physicians must report

Category	Diseases	Tokyo					Japan	
		20th	21st	22nd	23rd	Cum 2016	23rd	Cum 2016
I	Ebola hemorrhagic fever							
	Crimean-Congo hemorrhagic fever							
	Smallpox							
	South American hemorrhagic fever							
	Plague							
	Marburg disease							
	Lassa fever							
II	Acute poliomyelitis							
	Tuberculosis	83	69	80	75	1,598	396	10,196
	Diphtheria							
	Severe Acute Respiratory Syndrome(SARS)							
	Middle East Respiratory Syndrome (MERS)							
	Avian influenza H5N1							
	Avian influenza H7N9							
III	Cholera							3
	Shigellosis	1	1	2		19	2	56
	Enterohemorrhagic Escherichia coli infection	3	5	5	8	59	65	472
	Typhoid fever				1	10	2	23
	Paratyphoid fever					4		8
IV	Hepatitis E	1	1	2		23	6	198
	West Nile fever							
	Hepatitis A		2	3		42	3	158
	Echinococcosis						1	8
	Yellow fever							
	Psittacosis							1
	Omsk hemorrhagic fever							
	Relapsing fever							2
	Kyasanur forest disease							
	Q fever							
	Rabies							
	Coccidioidomycosis					1		1
	Monkeypox							
	Zika virus infection						1	7
	Severe Fever with Thrombocytopenia Syndrome						2	19
	Hemorrhagic fever with renal syndrome							
	Western equine encephalitis							
	Tick-borne encephalitis							
	Anthrax							
	Chikungunya fever			1		3		3
	Scrub typhus(Tsutsugamushi disease)						3	72
	Dengue fever	2				39	6	145
	Eastern equine encephalitis							
	Avian influenza (excluding H5N1 and H7N9)							
	Nipah virus infection							
	Japanese spotted fever						7	52
	Japanese encephalitis							
	Hantavirus pulmonary syndrome							
	Herpes B virus infection							
	Glanders							
	Brucellosis							
	Venezuelan equine encephalitis							
Hendra virus infection								
Epidemic typhus								
Botulism					1		2	
Malaria					6	3	20	
Tularemia								
Lyme disease							1	
Lyssavirus infection(excluding rabies)								
Rift valley fever								
Melioidosis								
Legionellosis	5	3	1	4	47	24	494	
Leptospirosis							3	
Rocky mountain spotted fever								

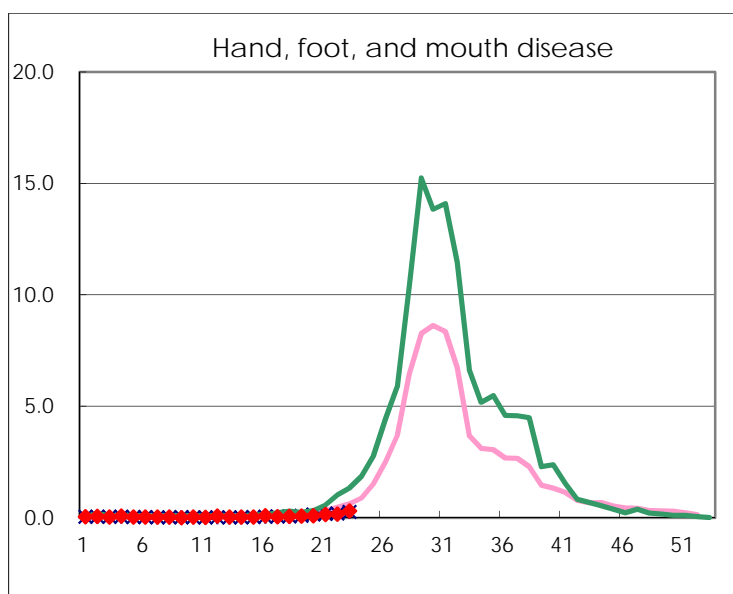
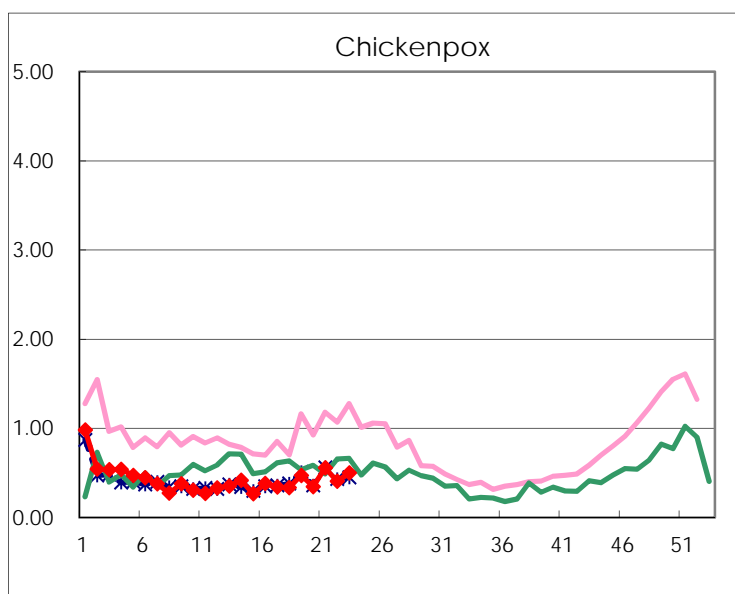
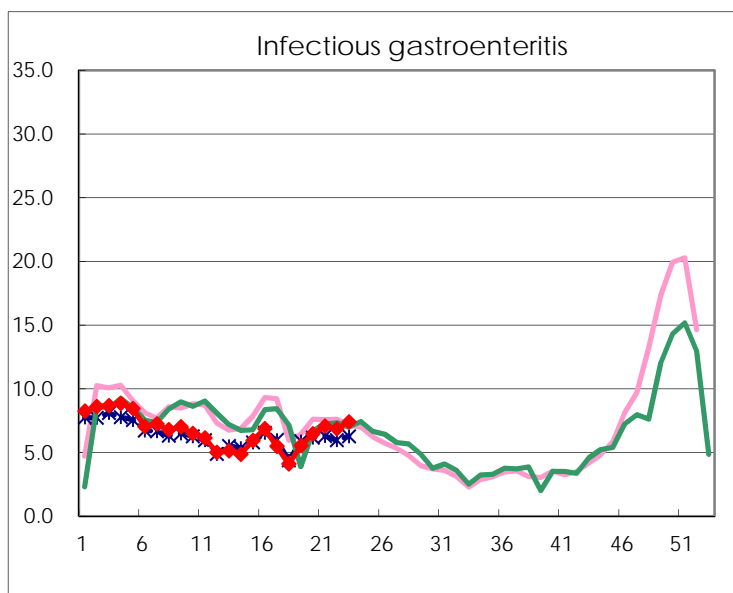
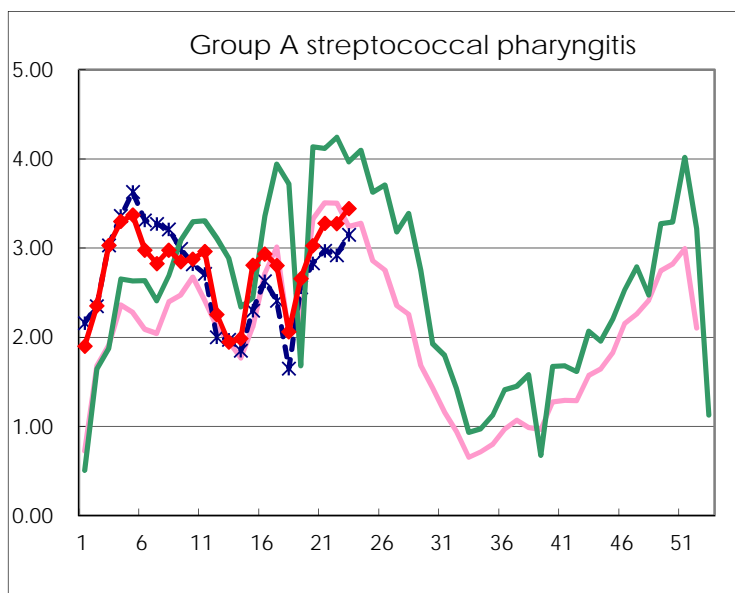
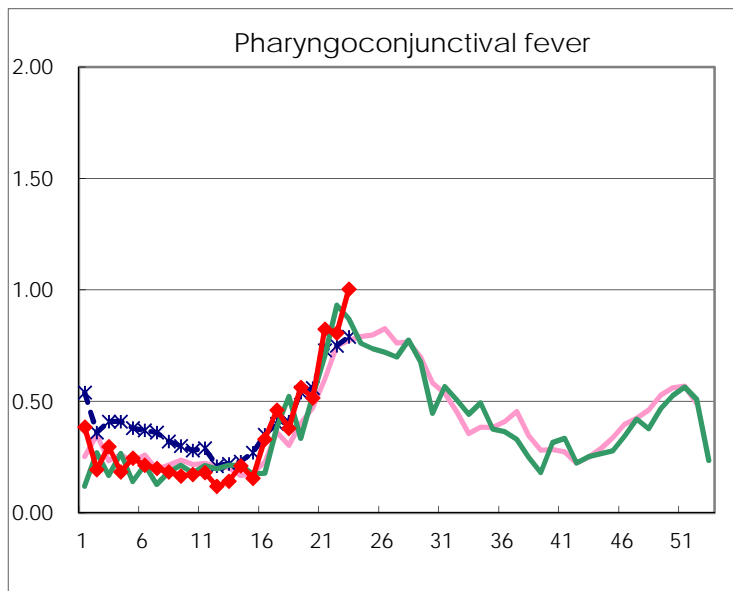
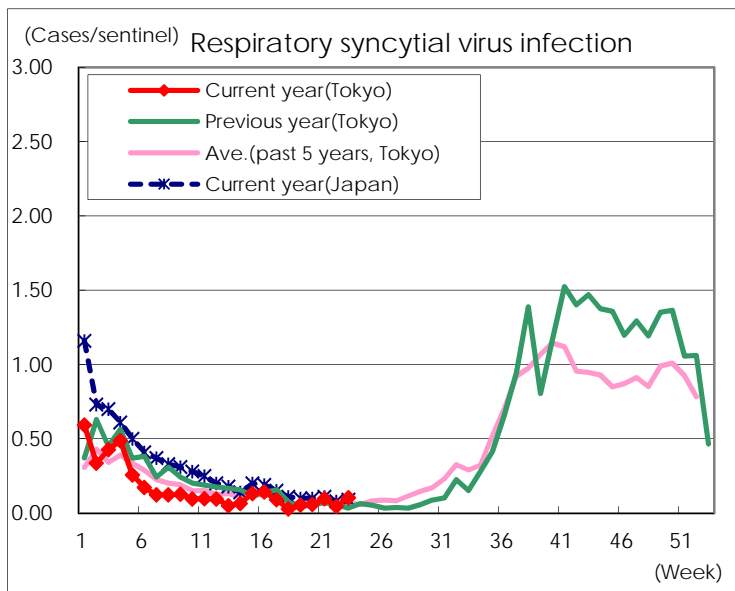
Category	Diseases	Tokyo				Cum 2016	Japan	
		20th	21st	22nd	23rd		23rd	Cum 2016
V	Amebiasis	5		4	6	97	14	519
	Viral hepatitis(excluding hepatitis A and E)			4	5	29	2	112
	CRE infection	5	2	5	4	86	11	577
	Acute encephalitis(excluding JE and WNE)	4	1	1	1	56	3	418
	Cryptosporidiosis							6
	Creutzfeldt-Jakob disease					9	3	75
	Severe invasive streptococcal infections(TSLS)		2	1	1	31	5	230
	Acquired immunodeficiency syndrome (AIDS)	8	9	11	11	212	21	632
	Giardiasis			1		7		26
	Invasive <i>Haemophilus influenzae</i> disease		1	2		19	5	151
	Invasive meningococcal disease		1			2		24
	Invasive pneumococcal disease	10	6	3	5	189	29	1,463
	Varicella (limited to hospitalized case)			3	4	25	4	134
	Congenital rubella syndrome							
	Syphilis	37	34	35	18	716	60	1,726
	Disseminated cryptococcosis					9	3	60
	Tetanus	1				3	4	51
	Vancomycin-resistant <i>S. aureus</i> infection							
	Vancomycin-resistant Enterococcus infection							17
	Rubella	1				11	7	66
Measles					3	2	10	
MDRA infection	1				1		16	

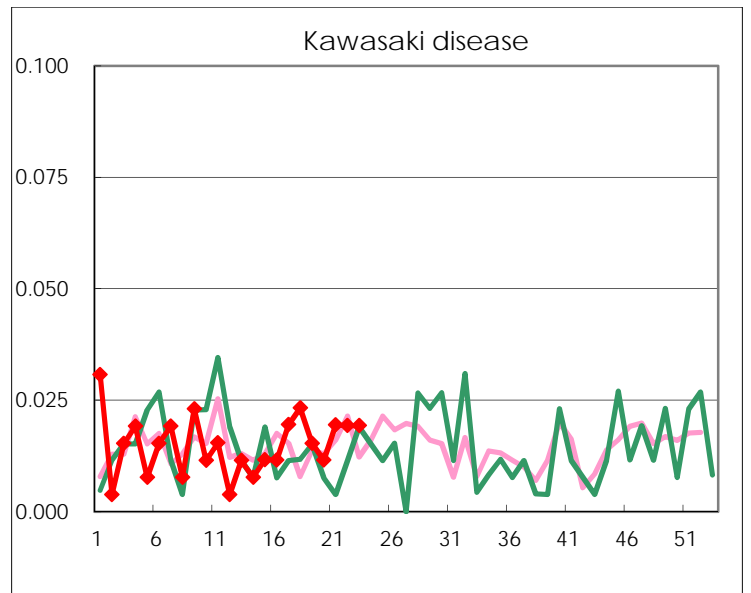
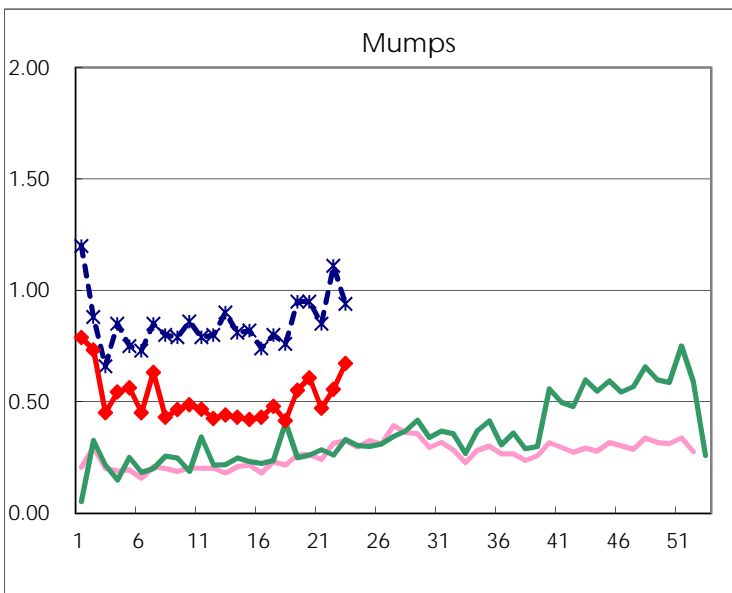
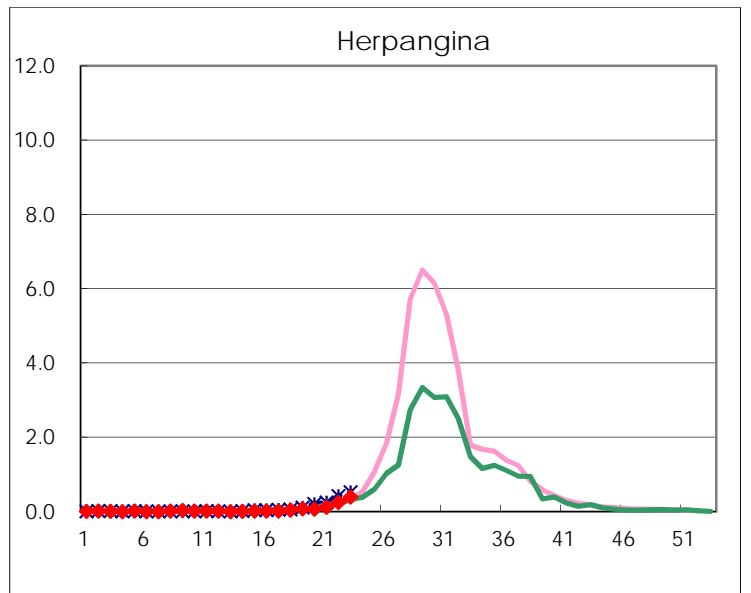
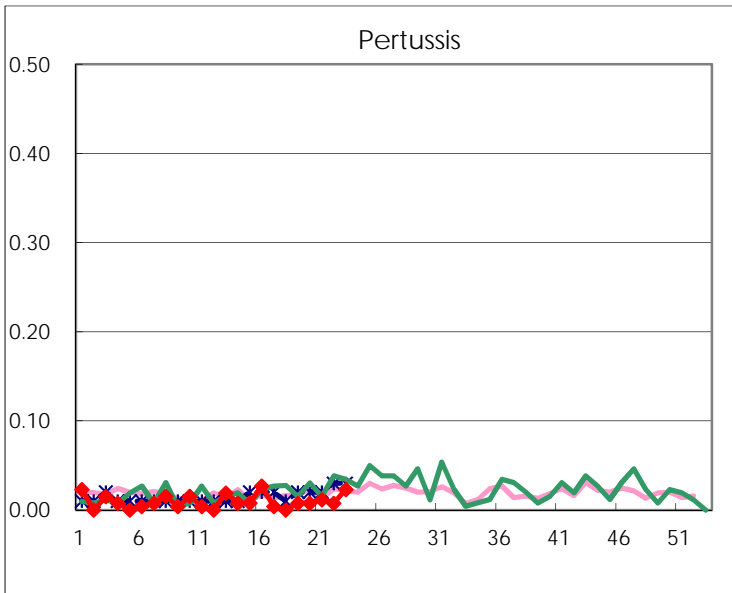
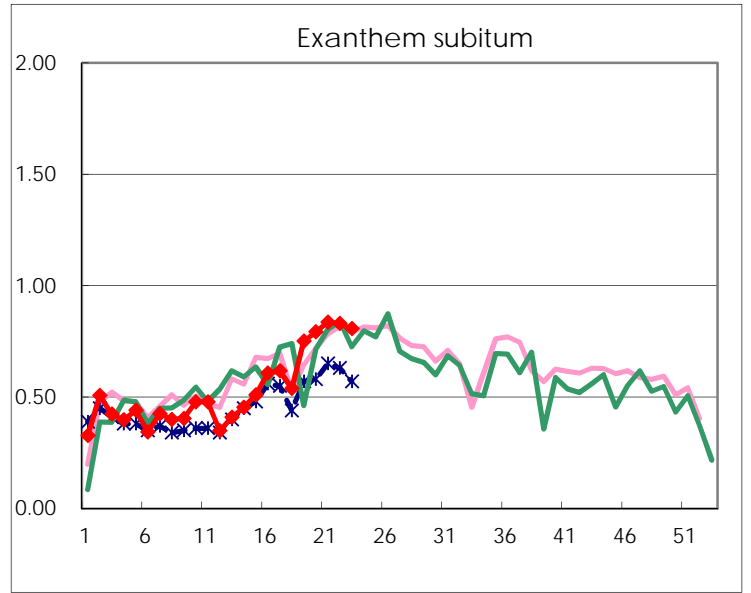
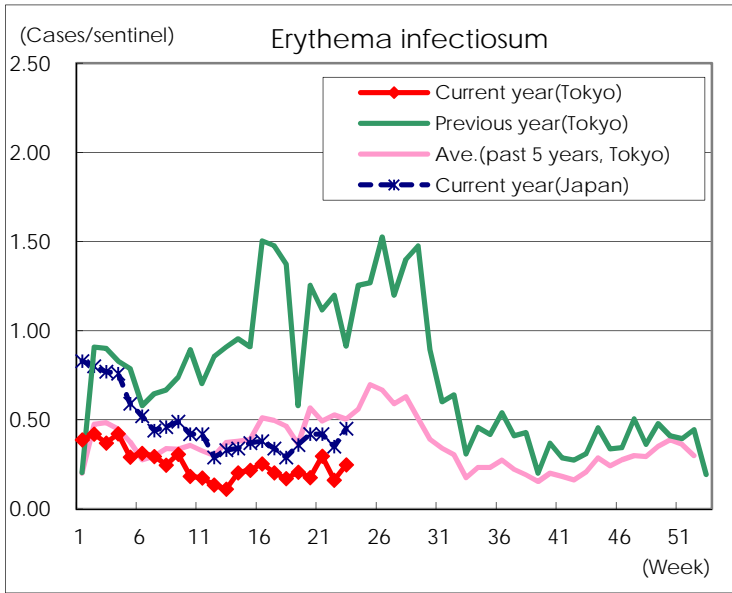
Number of patients with the diseases to be reported  
by the designated clinics and hospitals

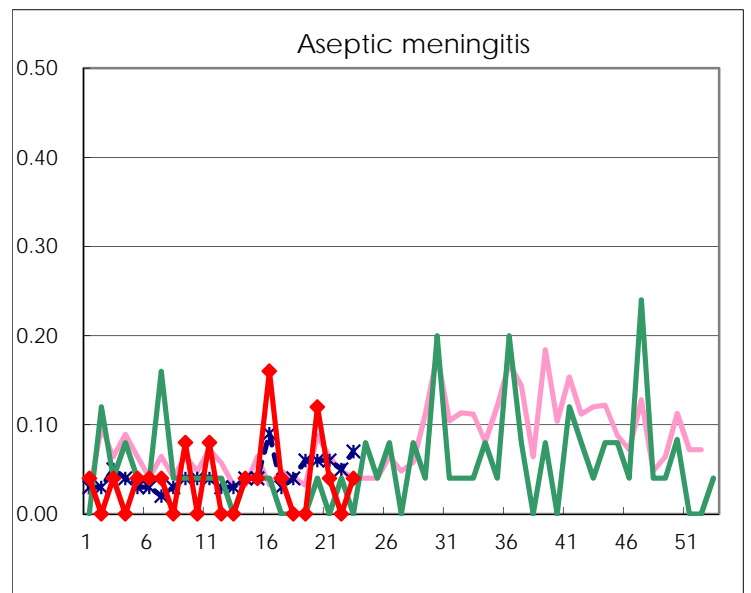
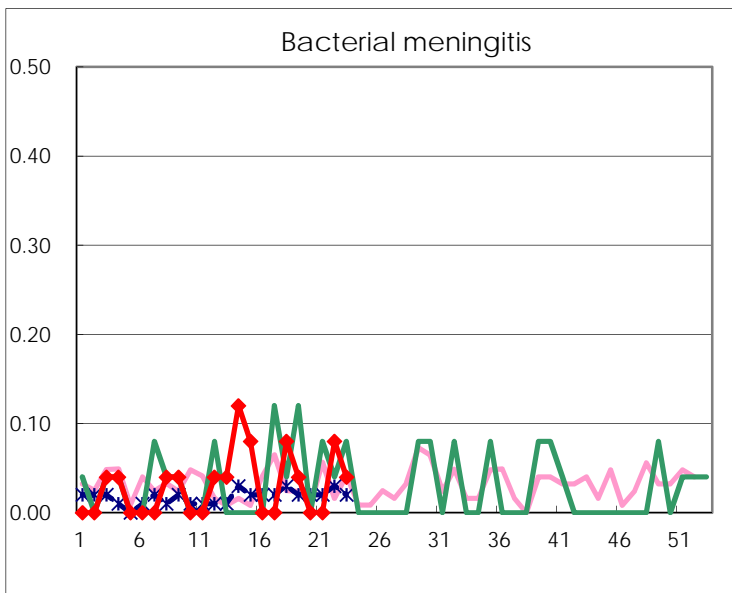
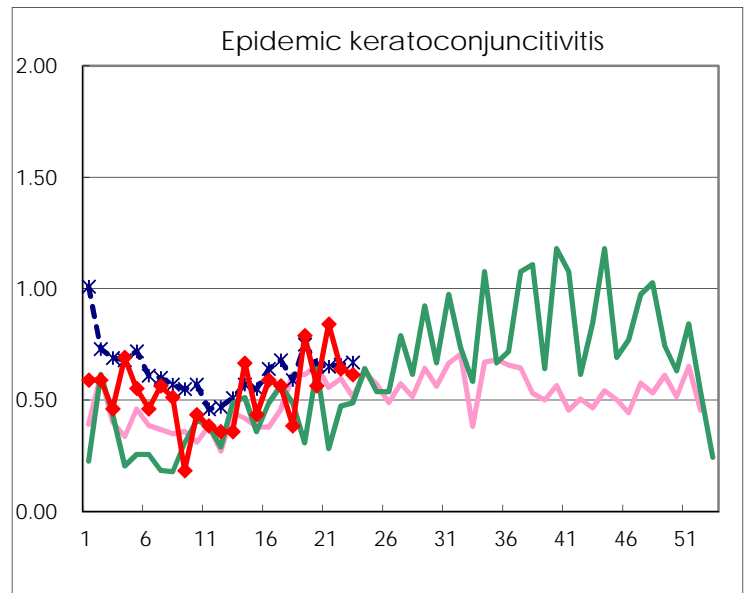
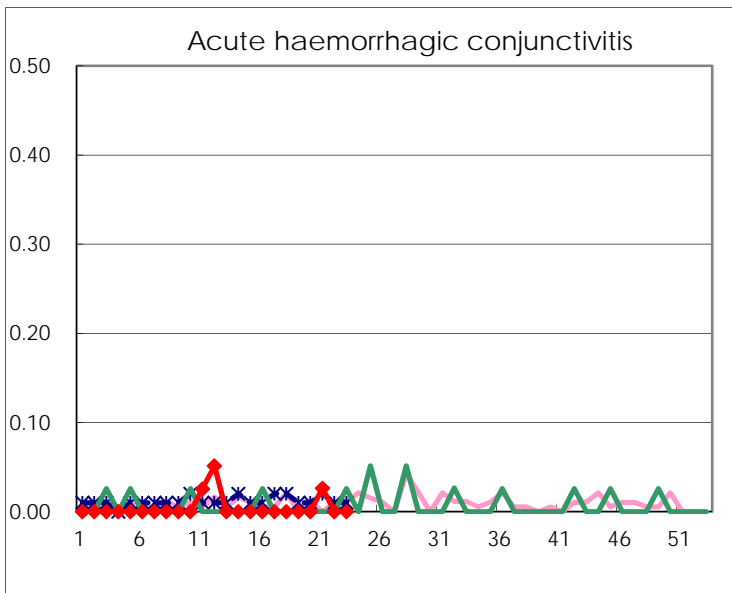
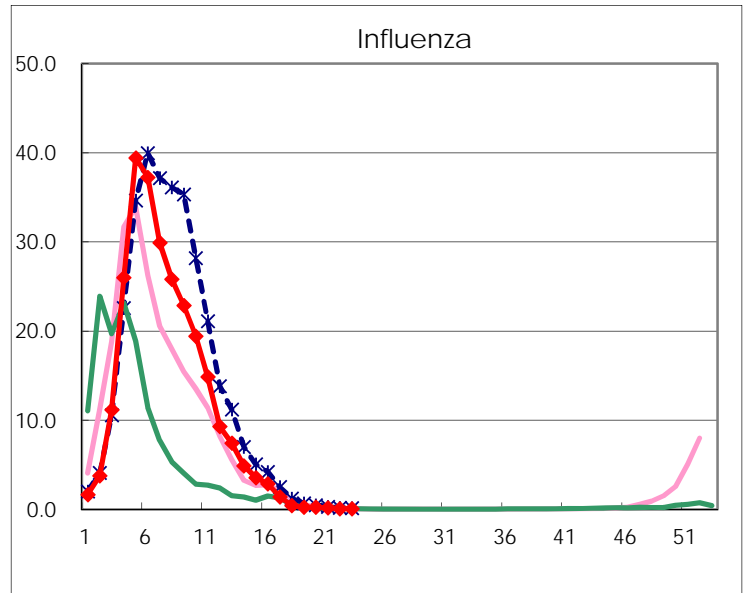
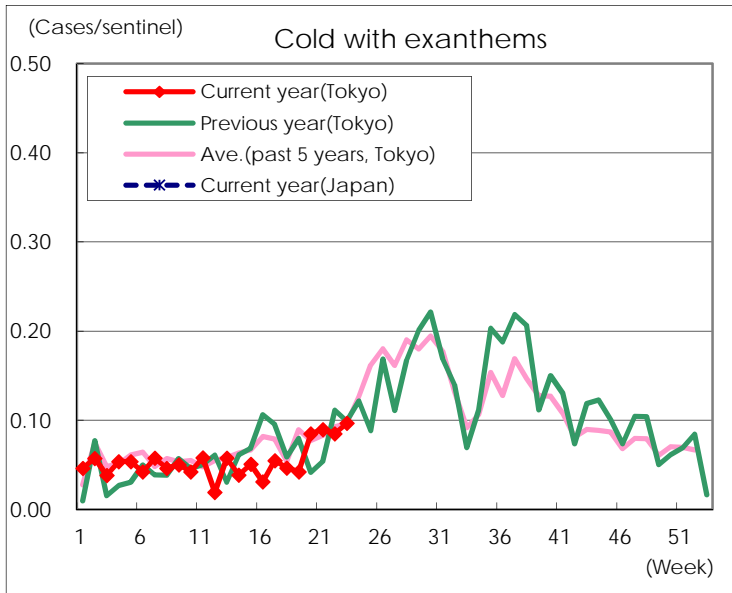
Diseases	Tokyo				
	20th	21st	22nd	23rd	/sentinel
Respiratory syncytial virus infection	15	25	12	27	0.10
Pharyngoconjunctival fever	134	212	209	260	1.00
Group A streptococcal pharyngitis	787	843	848	892	3.44
Infectious gastroenteritis	1,678	1,814	1,779	1,913	7.39
Chickenpox	90	143	105	129	0.50
Hand, foot, and mouth disease	21	37	43	79	0.31
Erythema infectiosum	46	76	42	64	0.25
Exanthem subitum	206	215	215	209	0.81
Pertussis	2	3	2	6	0.02
Herpangina	17	31	64	103	0.40
Mumps	158	121	144	174	0.67
Kawasaki disease	3	5	5	5	0.02
Cold with exanthems	22	23	22	25	0.10
Influenza	100	72	34	27	0.07
Acute hemorrhagic conjunctivitis		1			
Epidemic keratoconjunctivitis	22	32	25	24	0.62
Bacterial meningitis			2	1	0.04
Aseptic meningitis	3	1		1	0.04
Mycoplasma pneumonia	7	5	7	8	0.32
Chlamydial pneumonia (excluding psittacosis)		1	1	2	0.08
Infectious gastroenteritis (only by Rotavirus)	4	2	2	2	0.08
Influenza-Associated Hospitalizations		1			

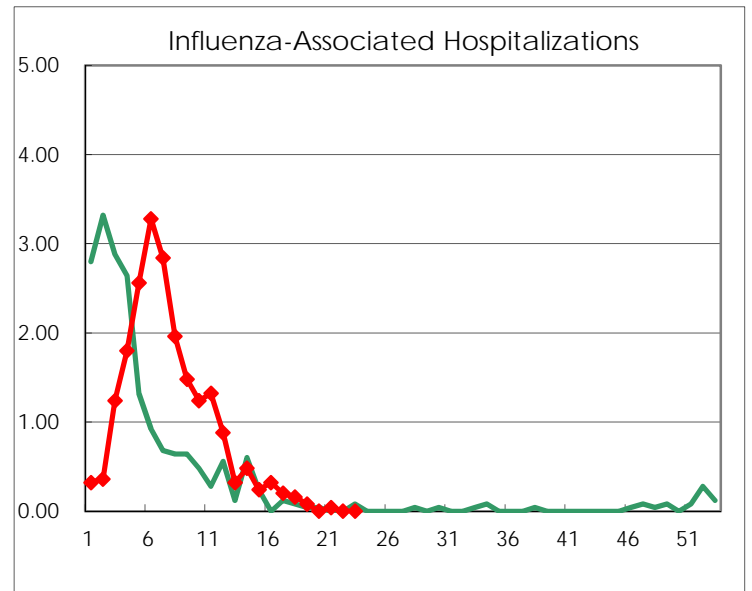
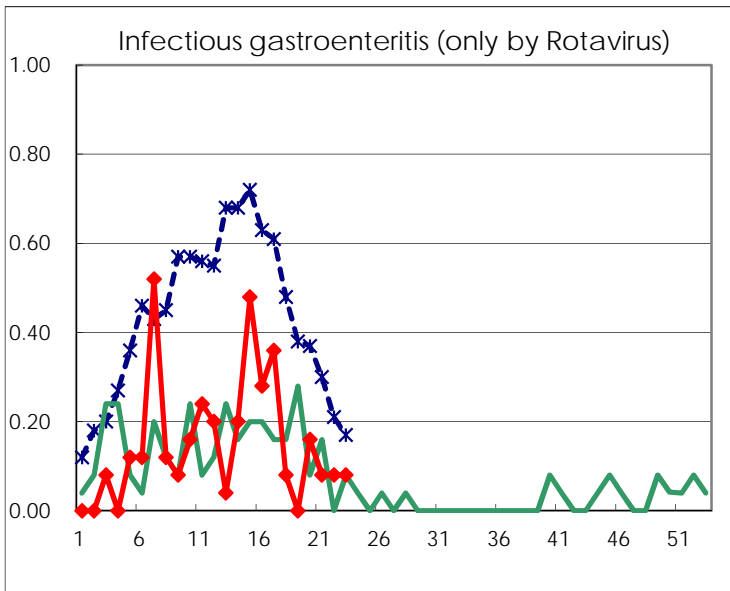
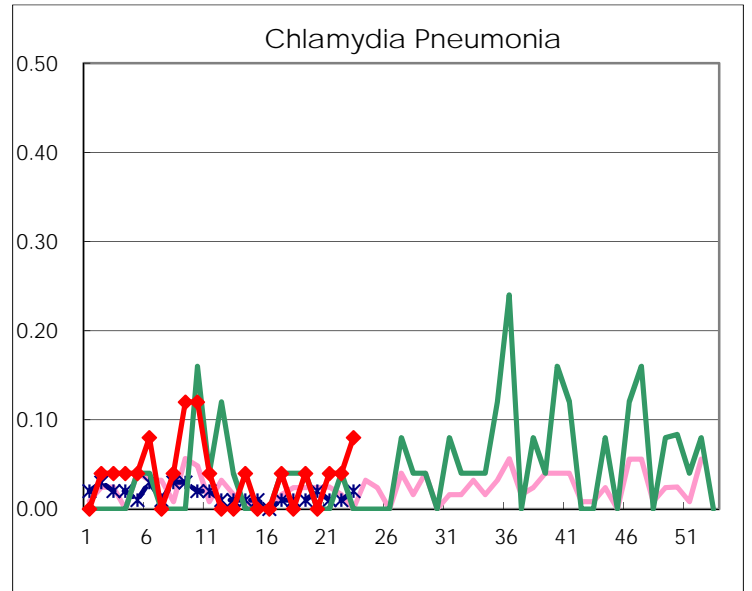
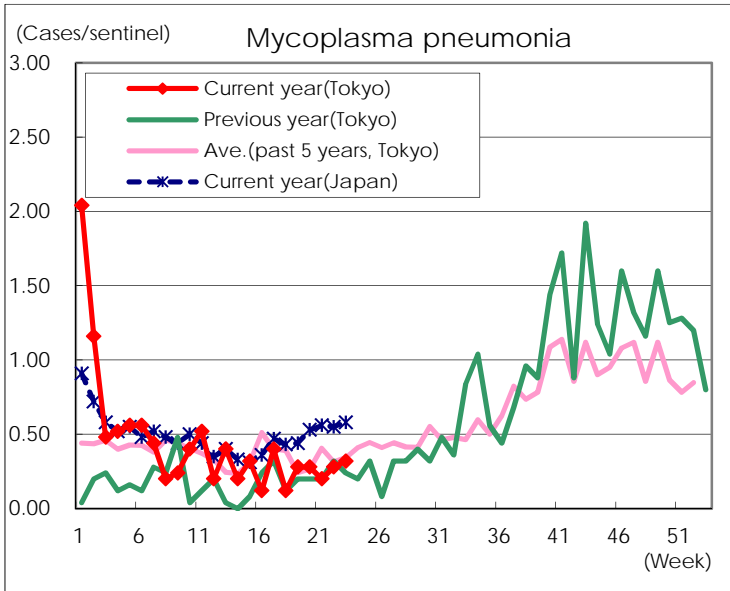
( Blank means 0. )

# Disease Trend Graph (weekly reported cases per sentinel in comparison)









Number of sentinel facilities for weekly reporting		
Types of sentinels	Number of sentinels	Sentinels having reported
Pediatric	264	259
Influenza	419	413
Ophthalmic	39	39
Specially-designated	25	25