

**23 June 2016 / Number 24**

## Surveillance System in Tokyo, Japan

The infectious diseases which all physicians must report

All physicians must report to health centers the incidence of the diseases which are shown at page one. Health centers electronically report the individual cases to Tokyo Metropolitan Infectious Disease Surveillance Center.

The infectious diseases required to be reported by the sentinels

The numbers of patients who visit the sentinel clinics or hospitals during a week are reported to health centers in Tokyo. And they electronically report the numbers to Tokyo Metropolitan Infectious Disease Surveillance Center. We have about 500 sentinel clinics and hospitals in Tokyo.

Tokyo Metropolitan Institute of Public Health

TEL:81-3-3363-3213 FAX:81-3-5332-7365

e-mail:[www@tokyo-eiken.go.jp](mailto:www@tokyo-eiken.go.jp)

URL:[idsc.tokyo-eiken.go.jp/](http://idsc.tokyo-eiken.go.jp/)

---

Number of patients with the diseases which all physicians must report

Category	Diseases	Tokyo					Japan	
		21st	22nd	23rd	24th	Cum 2016	24th	Cum 2016
I	Ebola hemorrhagic fever							
	Crimean-Congo hemorrhagic fever							
	Smallpox							
	South American hemorrhagic fever							
	Plague							
	Marburg disease							
II	Lassa fever							
	Acute poliomyelitis							
	Tuberculosis	70	85	78	62	1,669	357	10,667
	Diphtheria							
	Severe Acute Respiratory Syndrome(SARS)							
	Middle East Respiratory Syndrome (MERS)							
III	Avian influenza H5N1							
	Avian influenza H7N9							
	Cholera							3
	Shigellosis	1	2			19	2	58
	Enterohemorrhagic Escherichia coli infection	5	5	8	11	70	87	565
IV	Typhoid fever			1		10	1	24
	Paratyphoid fever					4		8
	Hepatitis E	1	2		1	24	3	204
	West Nile fever							
	Hepatitis A	2	3		1	43	6	164
	Echinococcosis							8
	Yellow fever							
	Psittacosis							2
	Omsk hemorrhagic fever							
	Relapsing fever							2
	Kyasanur forest disease							
	Q fever							
	Rabies							
	Coccidioidomycosis					1	1	2
	Monkeypox							
	Zika virus infection							7
	Severe Fever with Thrombocytopenia Syndrome						1	20
	Hemorrhagic fever with renal syndrome							
	Western equine encephalitis							
	Tick-borne encephalitis							
	Anthrax							
	Chikungunya fever		1			3		3
	Scrub typhus(Tsutsugamushi disease)						3	78
	Dengue fever				1	40	6	151
	Eastern equine encephalitis							
	Avian influenza (excluding H5N1 and H7N9)							
	Nipah virus infection							
	Japanese spotted fever						4	57
	Japanese encephalitis							
	Hantavirus pulmonary syndrome							
	Herpes B virus infection							
	Glanders							
Brucellosis								
Venezuelan equine encephalitis								
Hendra virus infection								
Epidemic typhus								
Botulism					1		2	
Malaria				1	7	2	22	
Tularemia								
Lyme disease							1	
Lyssavirus infection(excluding rabies)								
Rift valley fever								
Melioidosis								
Legionellosis	3	1	4	4	51	28	527	
Leptospirosis						1	4	
Rocky mountain spotted fever								

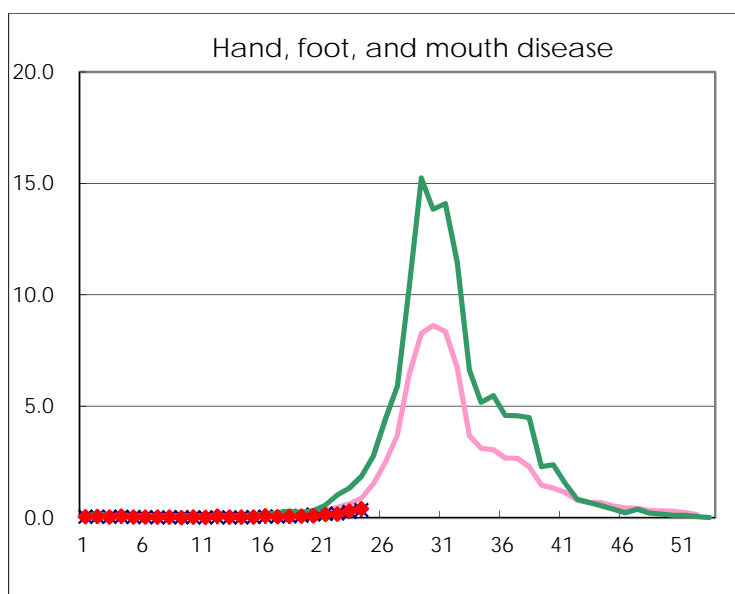
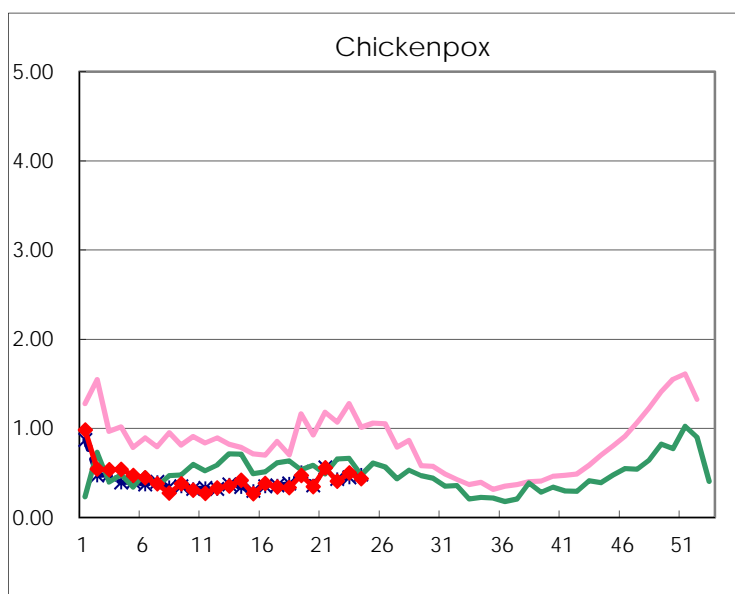
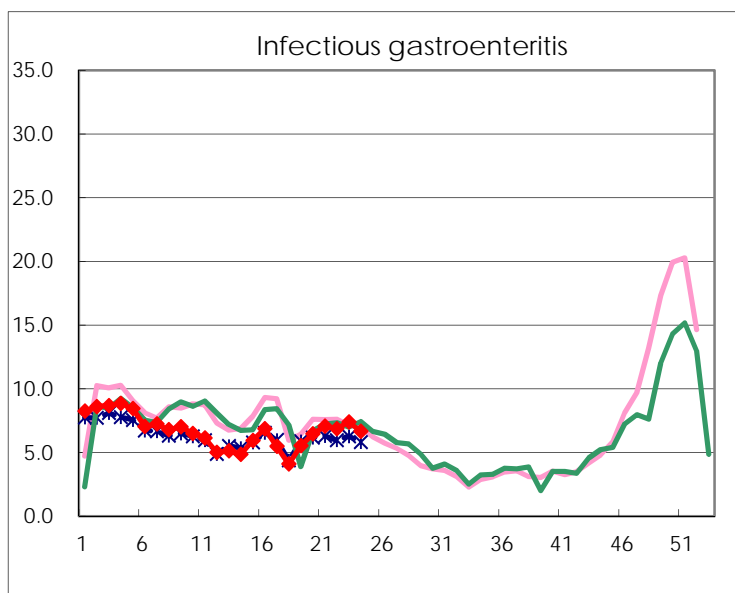
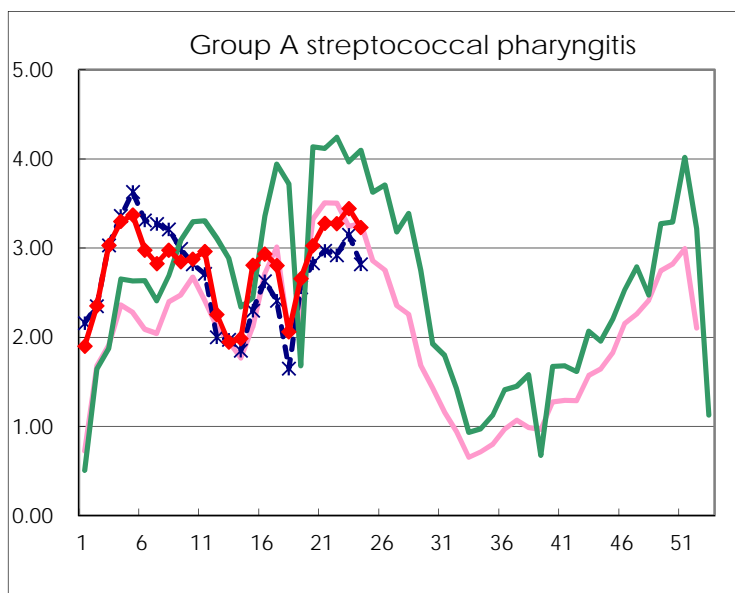
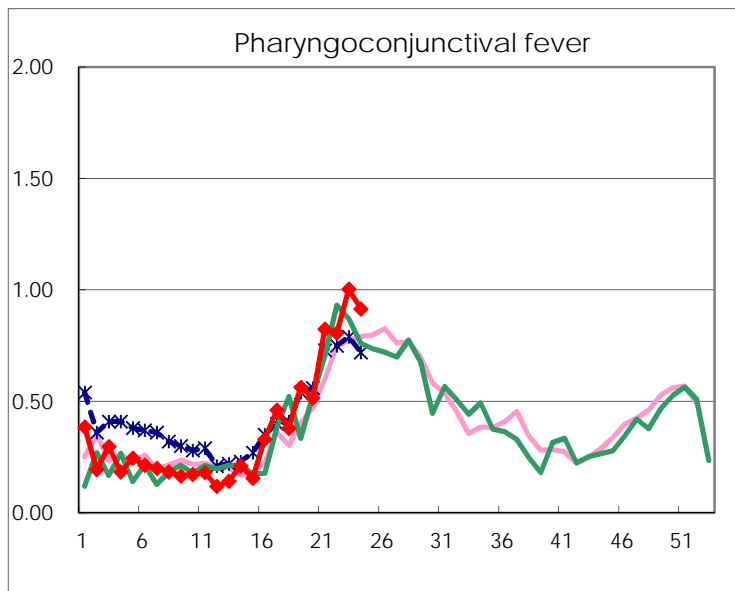
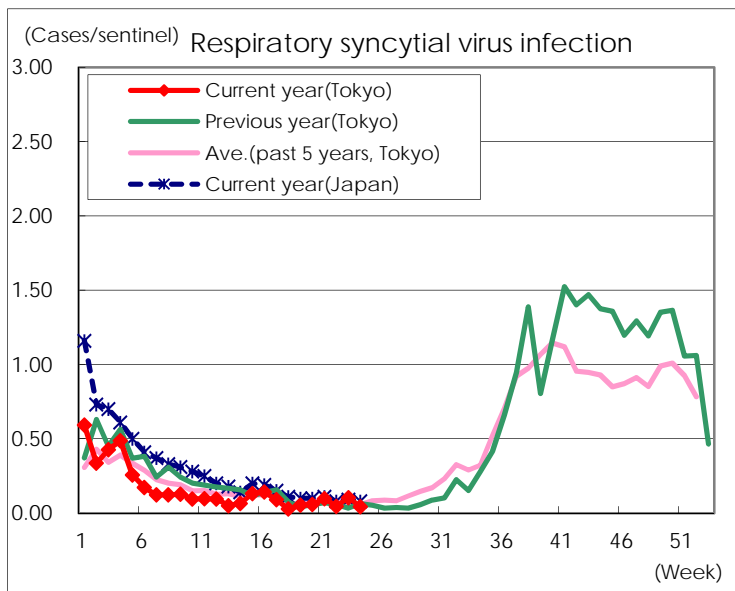
Category	Diseases	Tokyo					Japan	
		21st	22nd	23rd	24th	Cum 2016	24th	Cum 2016
V	Amebiasis		4	6	10	107	20	544
	Viral hepatitis(excluding hepatitis A and E)		4	5	2	31	5	118
	CRE infection	2	5	4		86	22	610
	Acute encephalitis(excluding JE and WNE)	1	1	1	1	57	5	437
	Cryptosporidiosis							6
	Creutzfeldt-Jakob disease					9	1	76
	Severe invasive streptococcal infections(TSLS)	2	1	1	2	33	8	243
	Acquired immunodeficiency syndrome (AIDS)	9	13	11	5	219	10	650
	Giardiasis		1			7		25
	Invasive <i>Haemophilus influenzae</i> disease	1	2		1	20	5	156
	Invasive meningococcal disease	1				2	1	25
	Invasive pneumococcal disease	6	3	5	10	199	26	1,513
	Varicella (limited to hospitalized case)		3	5	2	28	6	144
	Congenital rubella syndrome							
	Syphilis	34	35	18	41	757	76	1,828
	Disseminated cryptococcosis					9		61
	Tetanus					3	3	55
	Vancomycin-resistant <i>S. aureus</i> infection							
	Vancomycin-resistant Enterococcus infection							18
	Rubella					11	7	73
Measles					3	2	12	
MDRA infection					1		16	

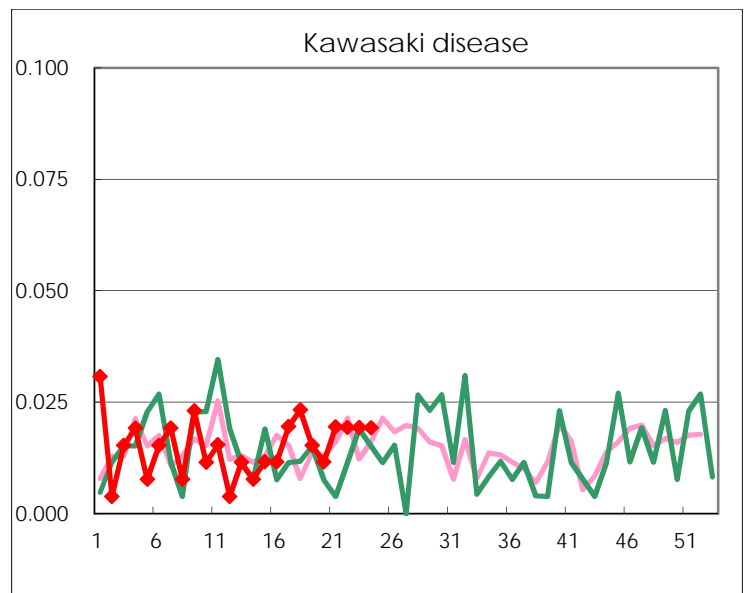
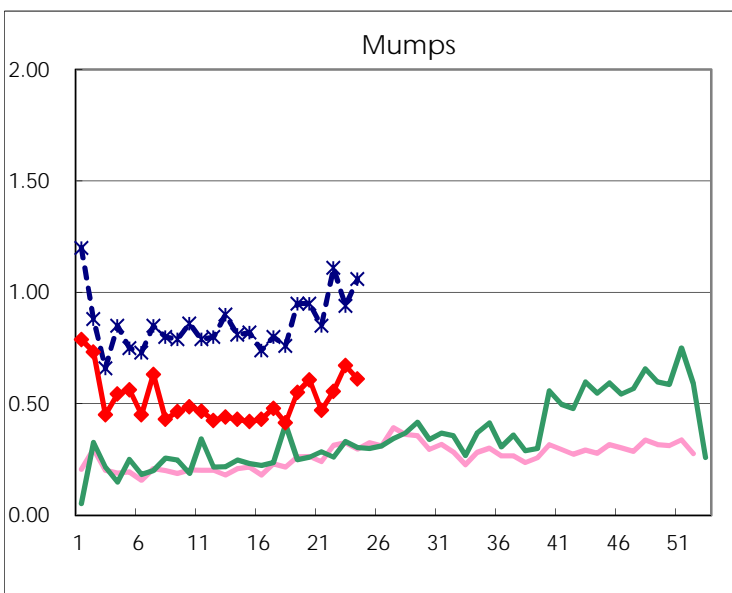
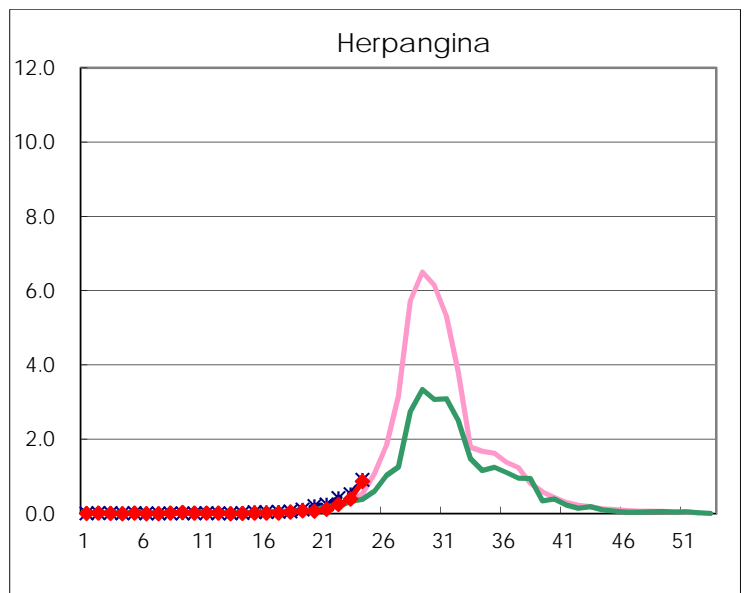
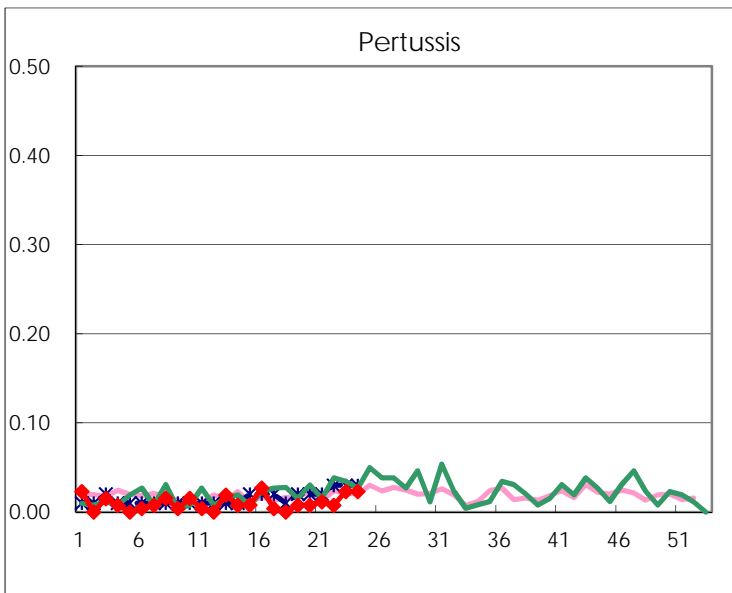
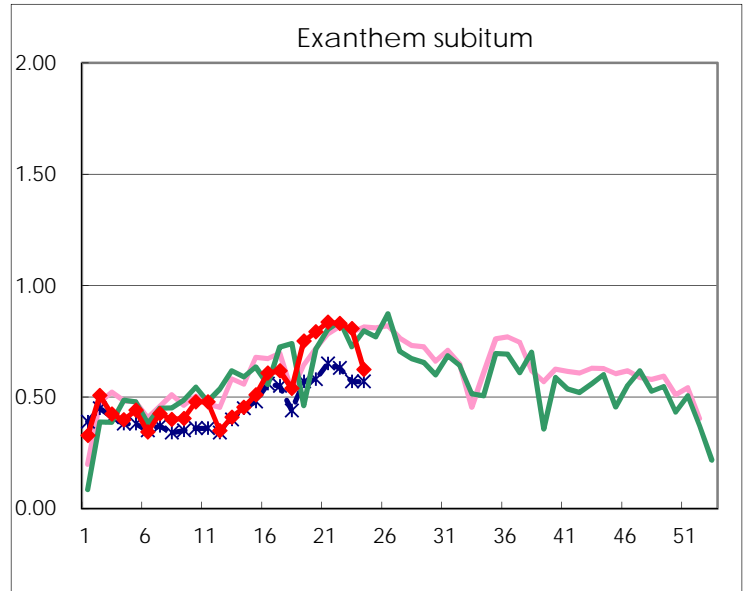
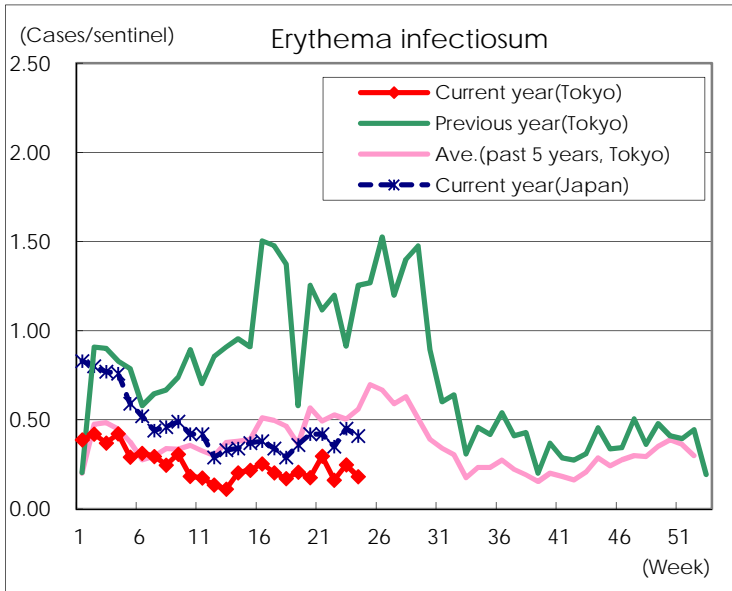
Number of patients with the diseases to be reported  
by the designated clinics and hospitals

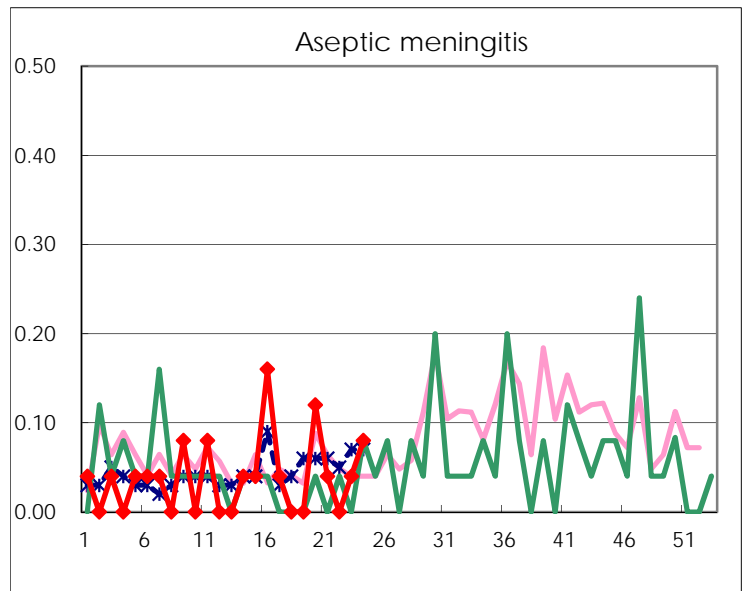
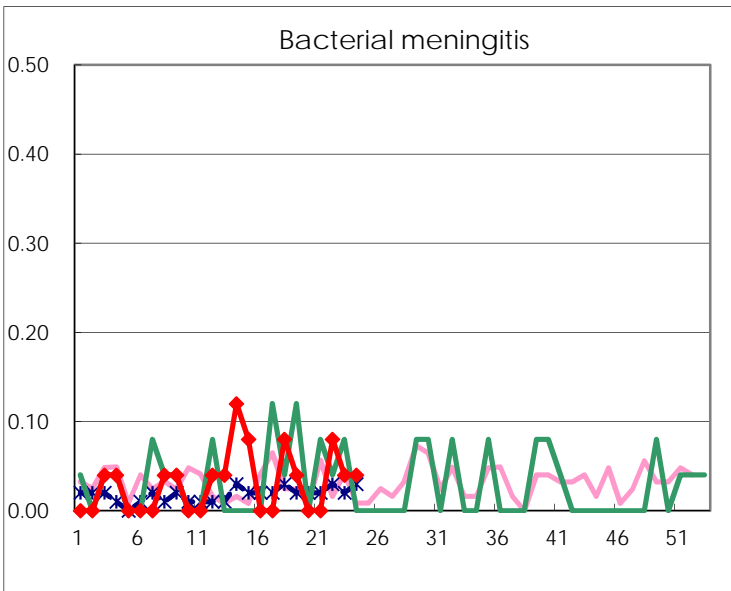
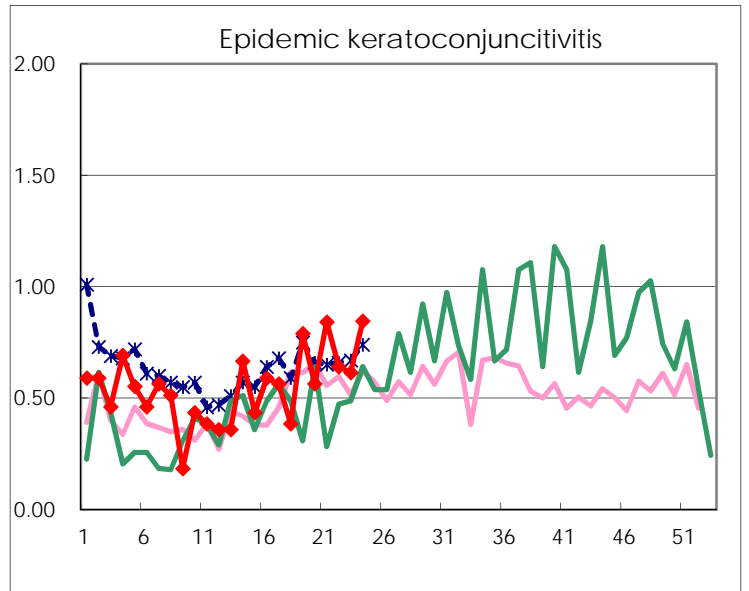
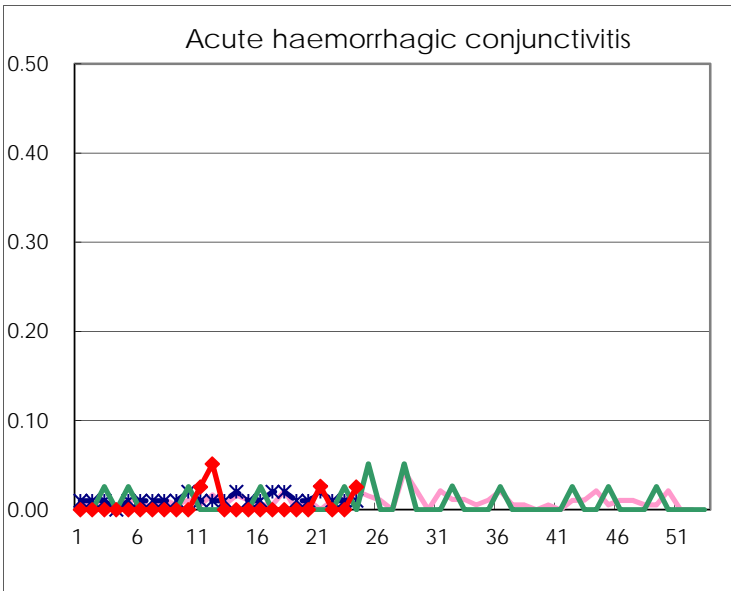
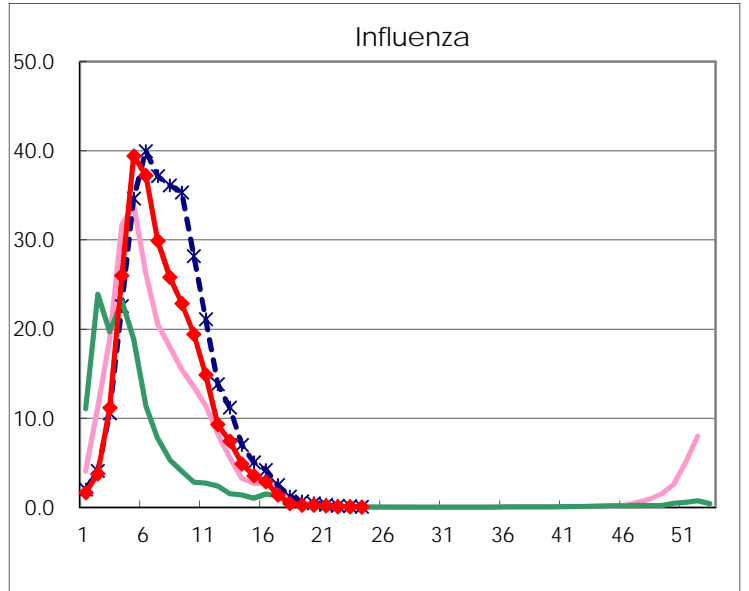
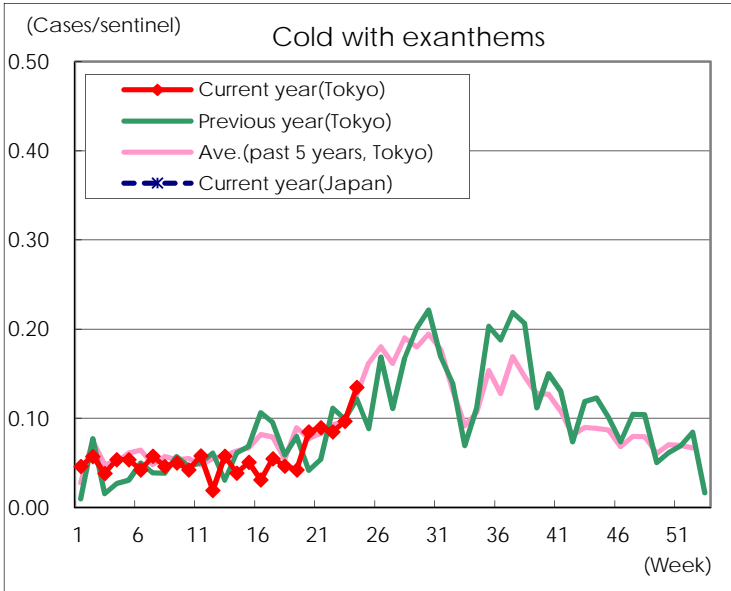
Diseases	Tokyo				
	21st	22nd	23rd	24th	/sentinel
Respiratory syncytial virus infection	25	12	27	11	0.04
Pharyngoconjunctival fever	212	209	260	238	0.92
Group A streptococcal pharyngitis	843	848	892	840	3.23
Infectious gastroenteritis	1,814	1,779	1,913	1,730	6.65
Chickenpox	143	105	129	113	0.43
Hand, foot, and mouth disease	37	43	79	103	0.40
Erythema infectiosum	76	42	64	47	0.18
Exanthem subitum	215	215	209	162	0.62
Pertussis	3	2	6	6	0.02
Herpangina	31	64	103	226	0.87
Mumps	121	144	174	159	0.61
Kawasaki disease	5	5	5	5	0.02
Cold with exanthems	23	22	25	35	0.13
Influenza	72	34	27	19	0.05
Acute hemorrhagic conjunctivitis	1			1	0.03
Epidemic keratoconjunctivitis	32	25	24	33	0.85
Bacterial meningitis		2	1	1	0.04
Aseptic meningitis	1		1	2	0.08
Mycoplasma pneumonia	5	7	8	14	0.56
Chlamydial pneumonia (excluding psittacosis)	1	1	2		
Infectious gastroenteritis (only by Rotavirus)	2	2	2	1	0.04
Influenza-Associated Hospitalizations	1				

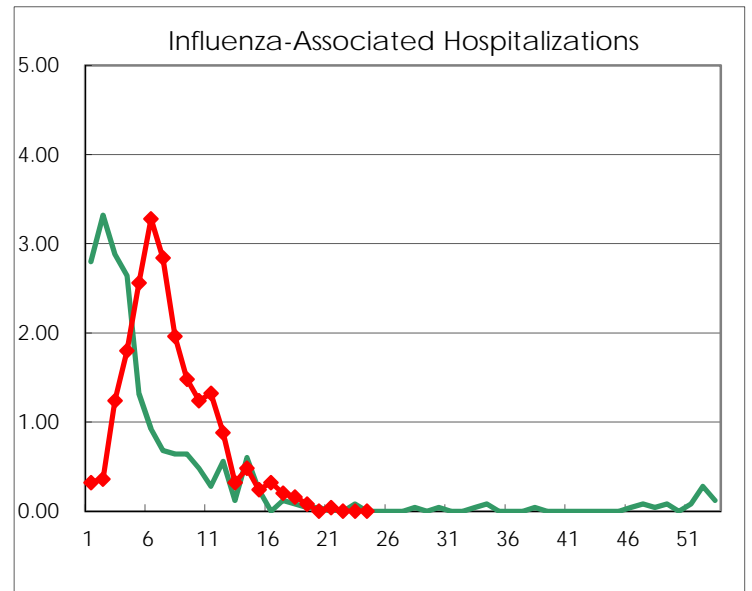
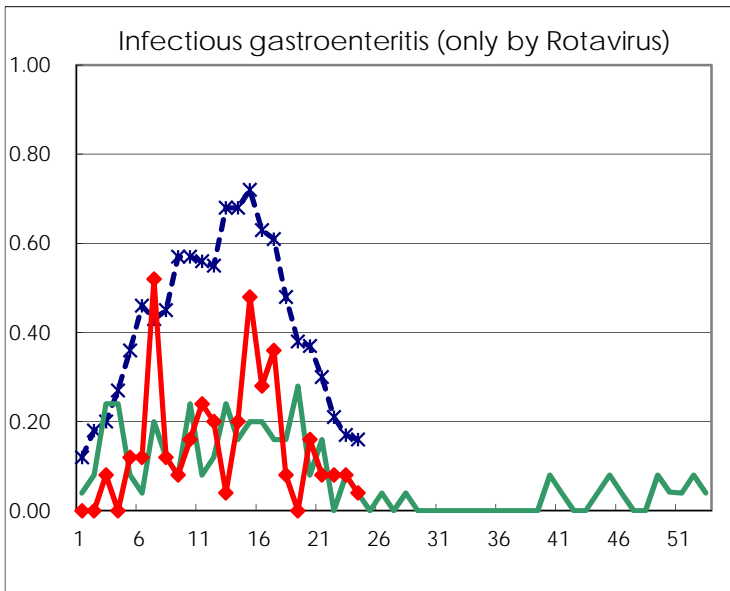
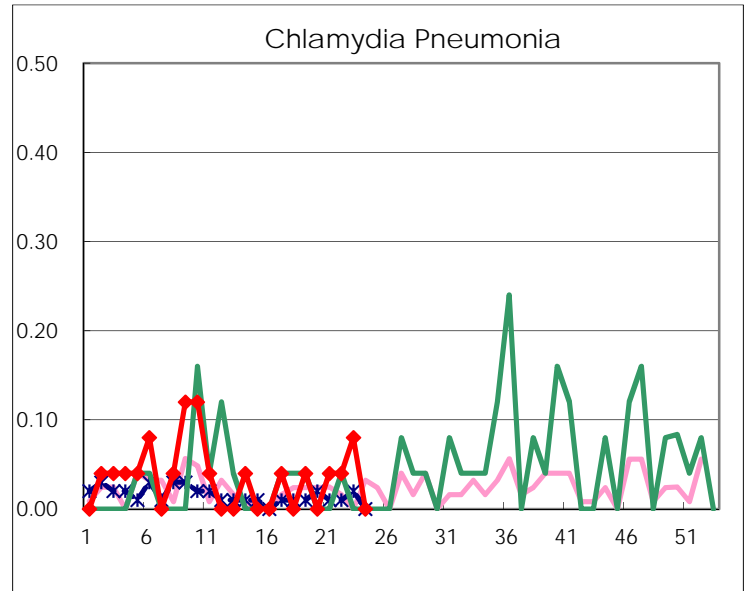
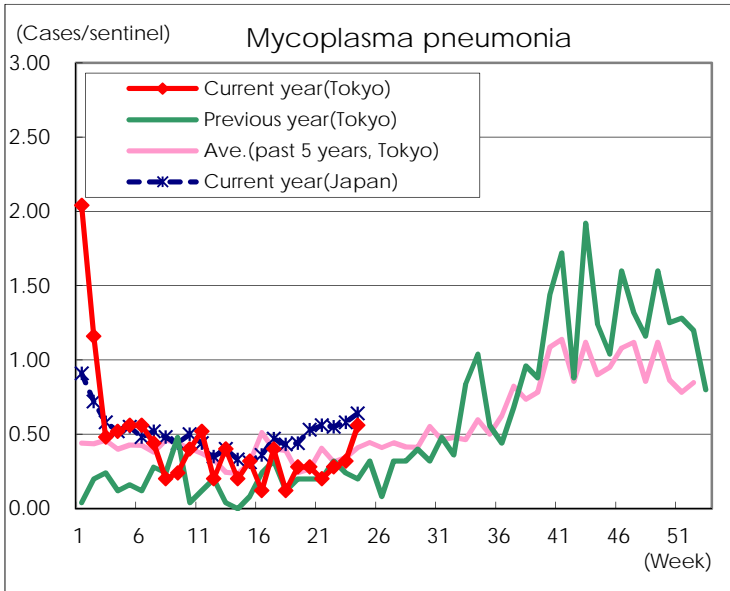
( Blank means 0. )

# Disease Trend Graph (weekly reported cases per sentinel in comparison)









Number of sentinel facilities for weekly reporting		
Types of sentinels	Number of sentinels	Sentinels having reported
Pediatric	264	260
Influenza	419	412
Ophthalmic	39	39
Specially-designated	25	25