

30 June 2016 / Number 25

Surveillance System in Tokyo, Japan

The infectious diseases which all physicians must report

All physicians must report to health centers the incidence of the diseases which are shown at page one. Health centers electronically report the individual cases to Tokyo Metropolitan Infectious Disease Surveillance Center.

The infectious diseases required to be reported by the sentinels

The numbers of patients who visit the sentinel clinics or hospitals during a week are reported to health centers in Tokyo. And they electronically report the numbers to Tokyo Metropolitan Infectious Disease Surveillance Center. We have about 500 sentinel clinics and hospitals in Tokyo.

Tokyo Metropolitan Institute of Public Health

TEL:81-3-3363-3213 FAX:81-3-5332-7365

e-mail:www@tokyo-eiken.go.jp

URL:idsc.tokyo-eiken.go.jp/

Number of patients with the diseases which all physicians must report

Category	Diseases	Tokyo					Japan	
		22nd	23rd	24th	25th	Cum 2016	25th	Cum 2016
I	Ebola hemorrhagic fever							
	Crimean-Congo hemorrhagic fever							
	Smallpox							
	South American hemorrhagic fever							
	Plague							
	Marburg disease							
	Lassa fever							
II	Acute poliomyelitis							
	Tuberculosis	85	79	68	70	1,744	381	11,166
	Diphtheria							
	Severe Acute Respiratory Syndrome(SARS)							
	Middle East Respiratory Syndrome (MERS)							
	Avian influenza H5N1							
	Avian influenza H7N9							
III	Cholera							3
	Shigellosis	2				19	3	61
	Enterohemorrhagic Escherichia coli infection	5	8	11	30	100	101	674
	Typhoid fever		1			10		24
	Paratyphoid fever				1	5		9
IV	Hepatitis E	2		1	2	26	4	209
	West Nile fever							
	Hepatitis A	3		1	2	45	5	170
	Echinococcosis							9
	Yellow fever							
	Psittacosis							2
	Omsk hemorrhagic fever							
	Relapsing fever							2
	Kyasanur forest disease							
	Q fever							
	Rabies							
	Coccidioidomycosis				1	2		2
	Monkeypox							
	Zika virus infection							7
	Severe Fever with Thrombocytopenia Syndrome						5	25
	Hemorrhagic fever with renal syndrome							
	Western equine encephalitis							
	Tick-borne encephalitis							
	Anthrax							
	Chikungunya fever	1				3		3
	Scrub typhus(Tsutsugamushi disease)							79
	Dengue fever			1		40	1	153
	Eastern equine encephalitis							
	Avian influenza (excluding H5N1 and H7N9)							
	Nipah virus infection							
	Japanese spotted fever						6	63
	Japanese encephalitis							
	Hantavirus pulmonary syndrome							
	Herpes B virus infection							
	Glanders							
	Brucellosis							
	Venezuelan equine encephalitis							
Hendra virus infection								
Epidemic typhus								
Botulism					1		2	
Malaria					6	1	23	
Tularemia								
Lyme disease							2	
Lyssavirus infection(excluding rabies)								
Rift valley fever								
Melioidosis								
Legionellosis	1	4	4	4	55	35	568	
Leptospirosis							4	
Rocky mountain spotted fever								

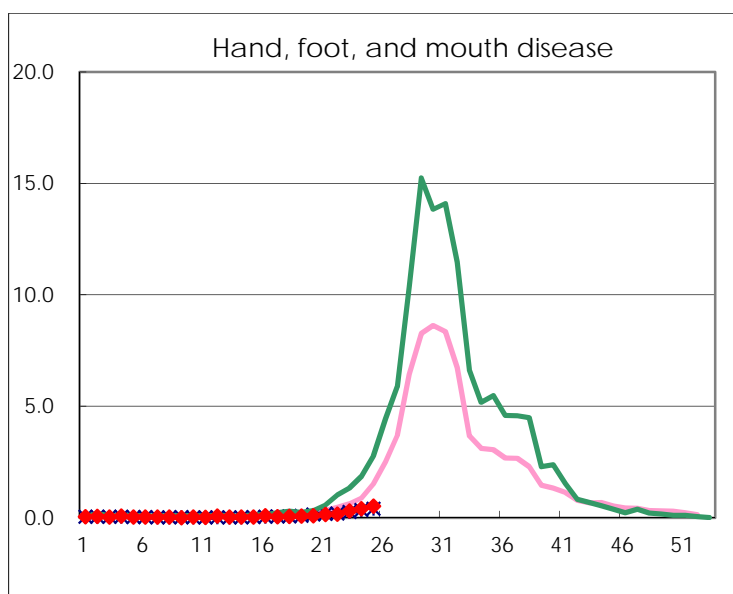
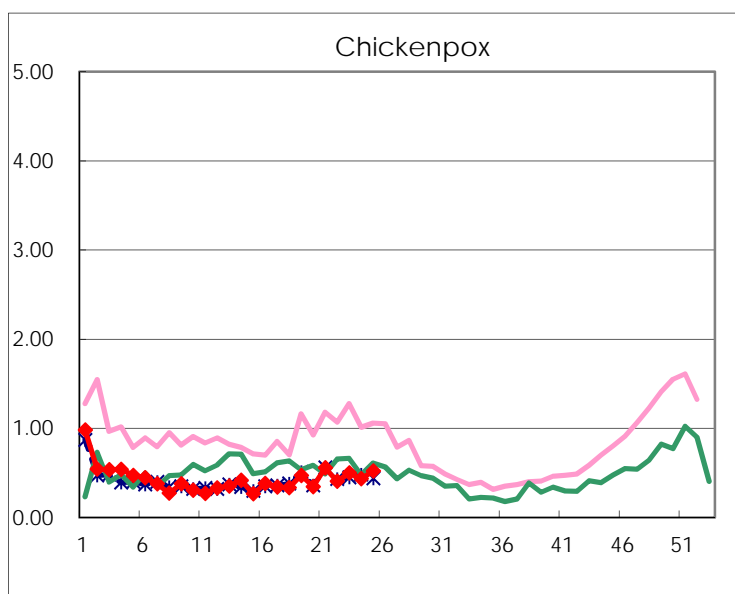
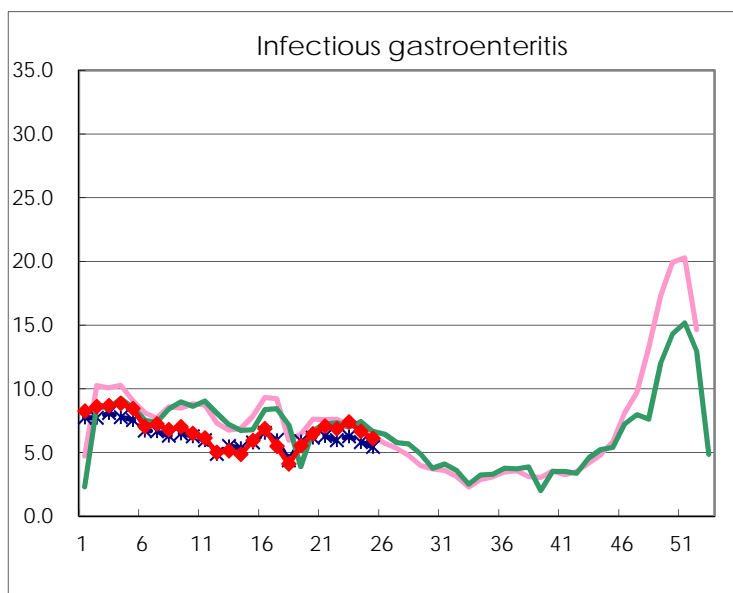
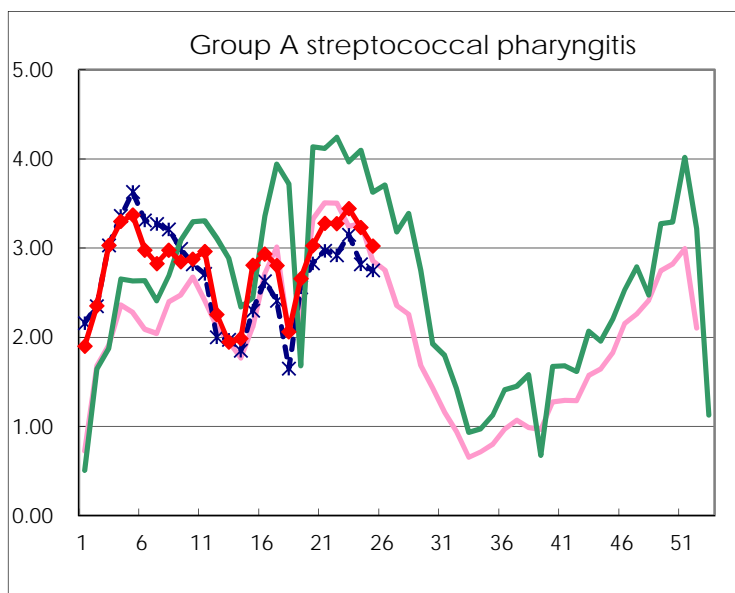
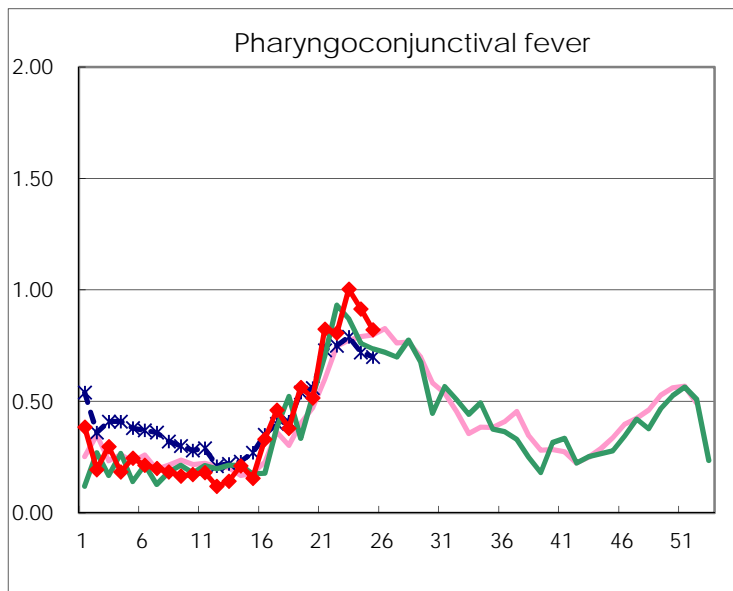
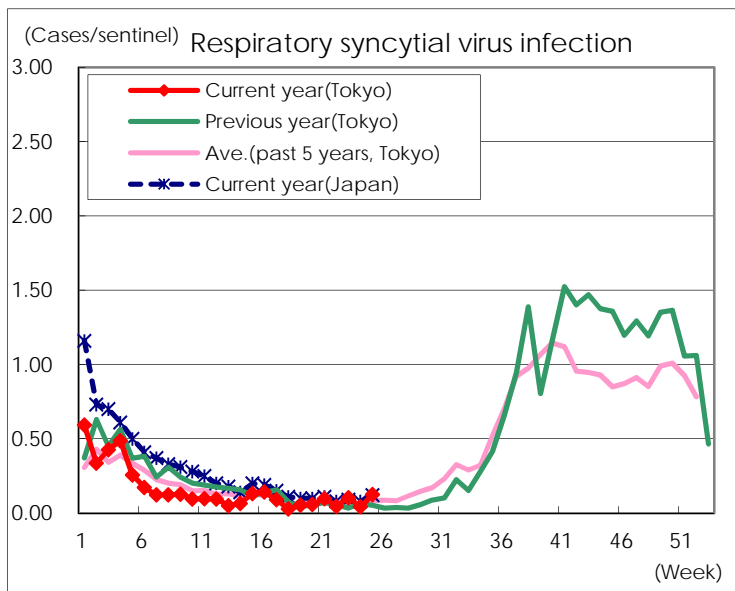
Category	Diseases	Tokyo				Japan		
		22nd	23rd	24th	25th	Cum 2016	25th	Cum 2016
V	Amebiasis	4	6	10	7	114	10	566
	Viral hepatitis(excluding hepatitis A and E)	4	5	2	1	32	1	121
	CRE infection	5	4		2	88	19	642
	Acute encephalitis(excluding JE and WNE)	1	1	1	1	58	9	448
	Cryptosporidiosis							6
	Creutzfeldt-Jakob disease					9	4	83
	Severe invasive streptococcal infections(TSLS)	1	1	2	1	34	4	251
	Acquired immunodeficiency syndrome (AIDS)	13	11	5	10	229	16	673
	Giardiasis	1				7	2	27
	Invasive <i>Haemophilus influenzae</i> disease	2		1	1	21	4	167
	Invasive meningococcal disease					2		25
	Invasive pneumococcal disease	3	5	10	10	209	26	1,553
	Varicella (limited to hospitalized case)	3	5	2		28	6	155
	Congenital rubella syndrome							
	Syphilis	35	18	41	34	791	71	1,923
	Disseminated cryptococcosis					9	1	62
	Tetanus					3	2	59
	Vancomycin-resistant <i>S. aureus</i> infection							
	Vancomycin-resistant Enterococcus infection						2	21
	Rubella					11	3	75
Measles					3		11	
MDRA infection					1	1	17	

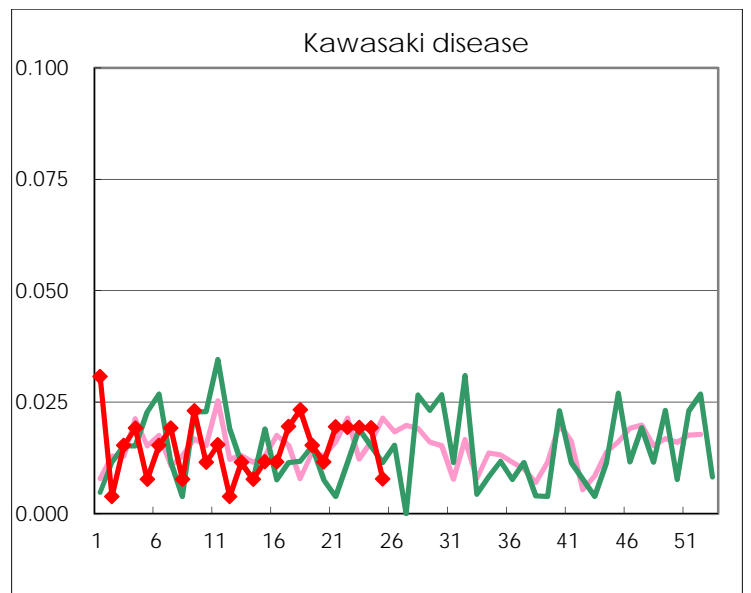
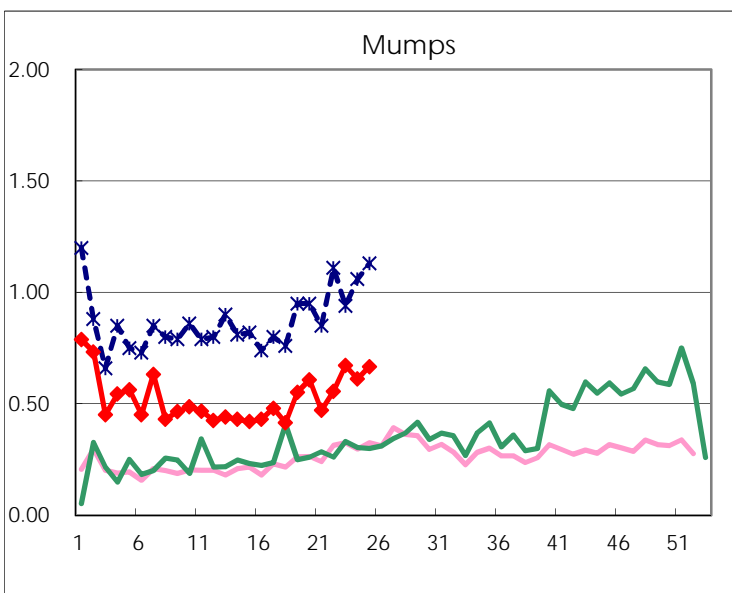
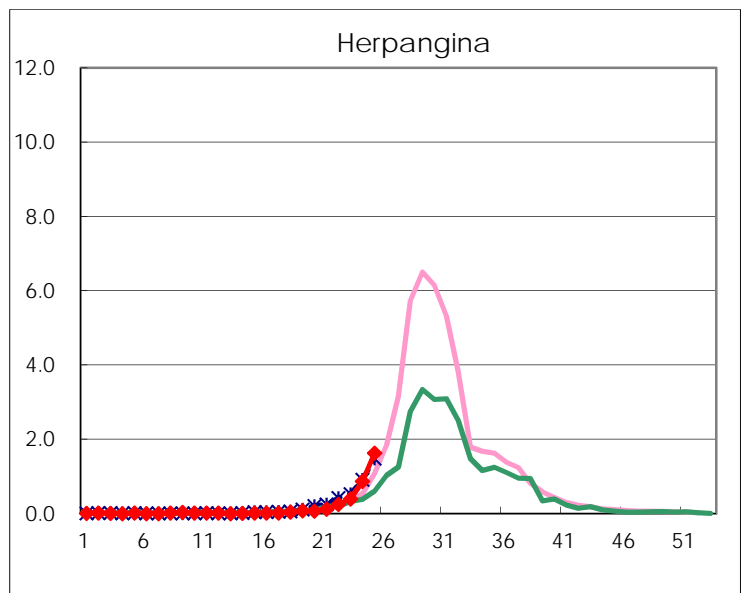
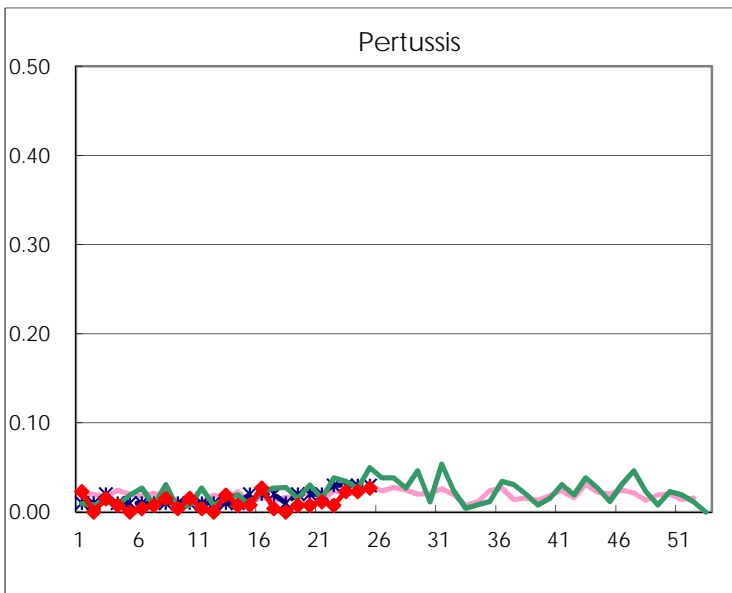
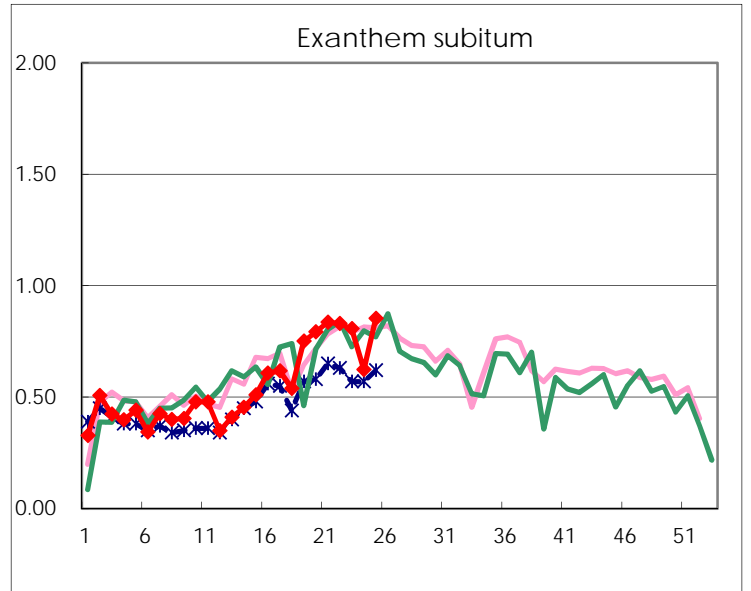
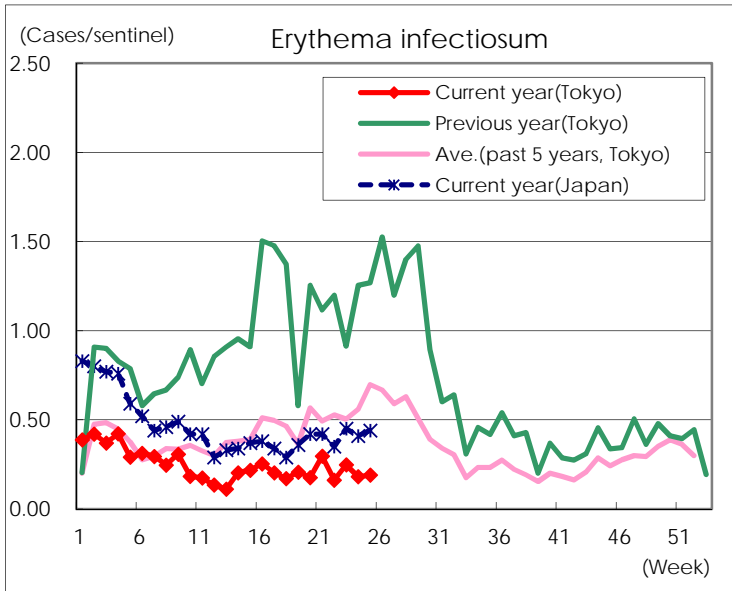
Number of patients with the diseases to be reported
by the designated clinics and hospitals

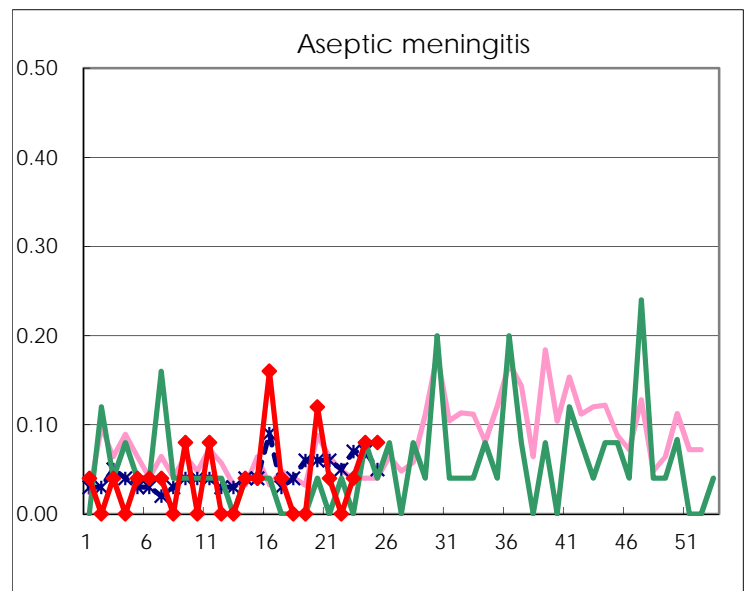
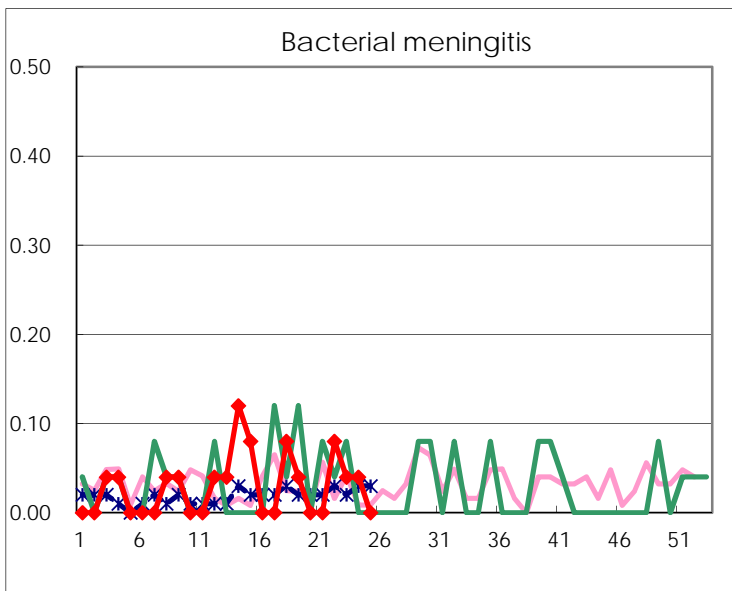
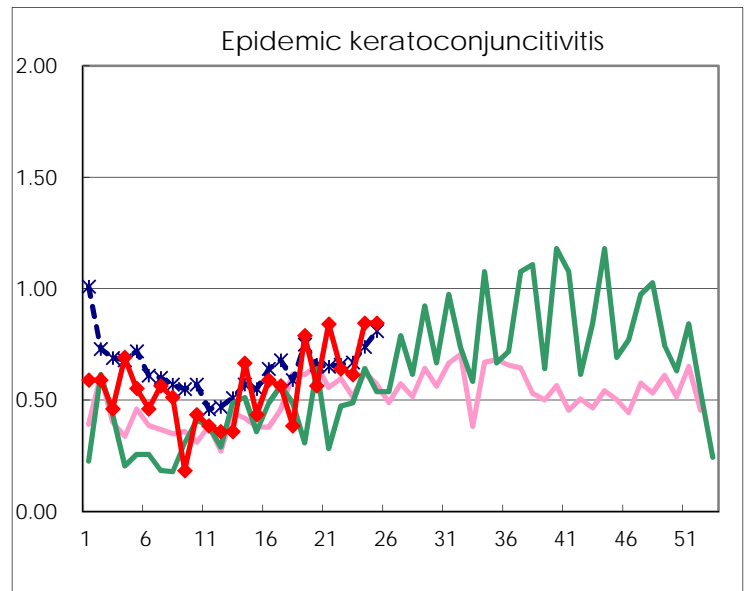
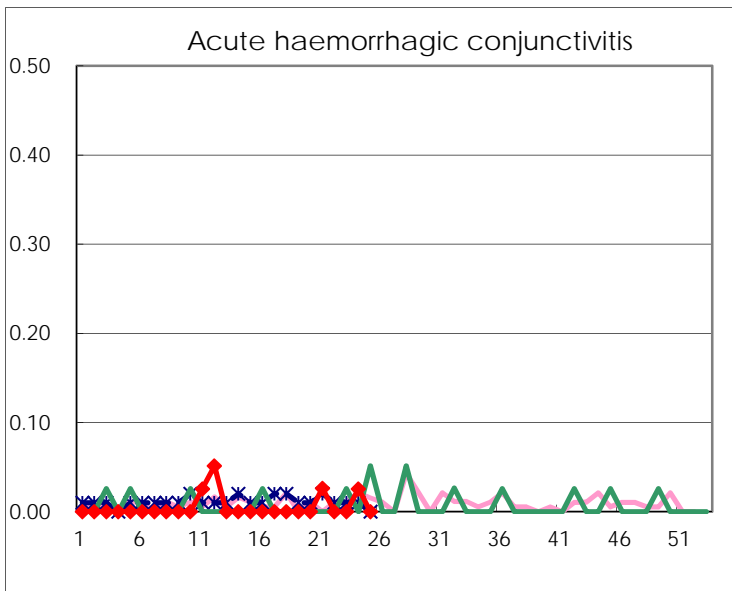
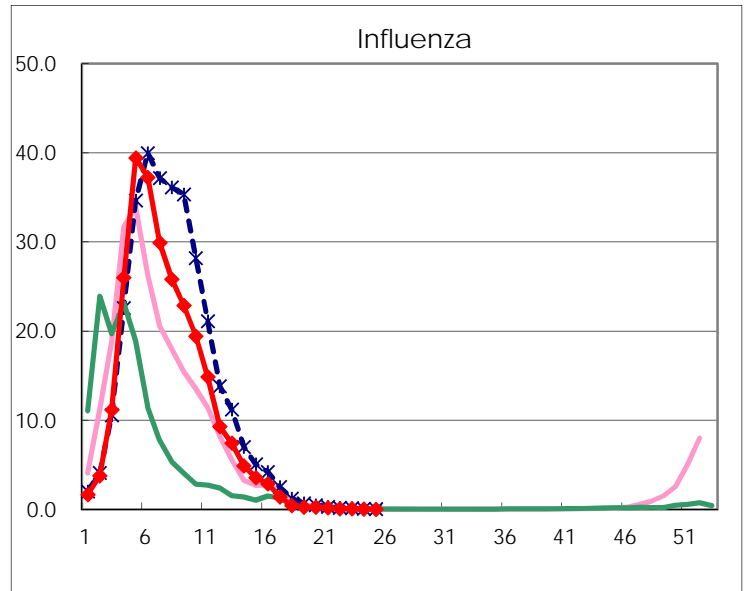
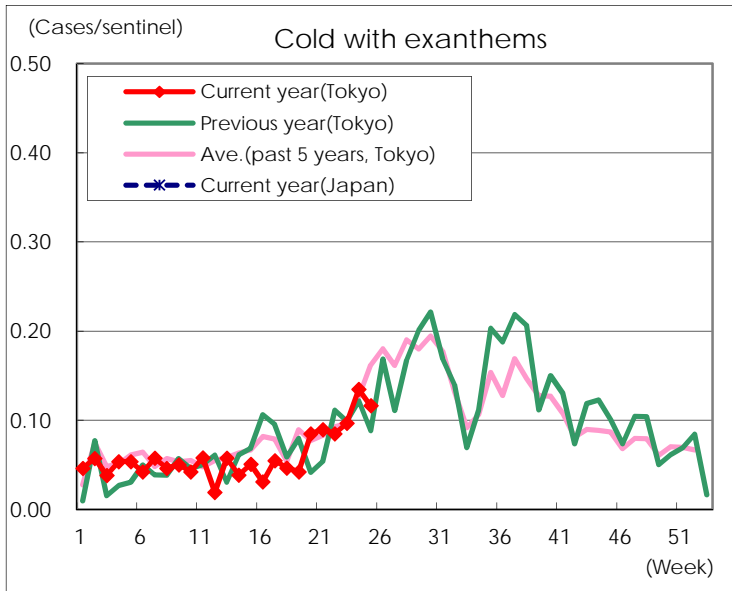
Diseases	Tokyo				
	22nd	23rd	24th	25th	/sentinel
Respiratory syncytial virus infection	12	27	11	32	0.12
Pharyngoconjunctival fever	209	260	238	212	0.82
Group A streptococcal pharyngitis	848	892	840	780	3.02
Infectious gastroenteritis	1,779	1,913	1,730	1,575	6.10
Chickenpox	105	129	113	134	0.52
Hand, foot, and mouth disease	43	79	103	135	0.52
Erythema infectiosum	42	64	47	49	0.19
Exanthem subitum	215	209	162	220	0.85
Pertussis	2	6	6	7	0.03
Herpangina	64	103	226	420	1.63
Mumps	144	174	159	172	0.67
Kawasaki disease	5	5	5	2	0.01
Cold with exanthems	22	25	35	30	0.12
Influenza	34	27	19	8	0.02
Acute hemorrhagic conjunctivitis			1		
Epidemic keratoconjunctivitis	25	24	33	33	0.85
Bacterial meningitis	2	1	1		
Aseptic meningitis		1	2	2	0.08
Mycoplasma pneumonia	7	8	14	12	0.48
Chlamydial pneumonia (excluding psittacosis)	1	2			
Infectious gastroenteritis (only by Rotavirus)	2	2	1	1	0.04
Influenza-Associated Hospitalizations					

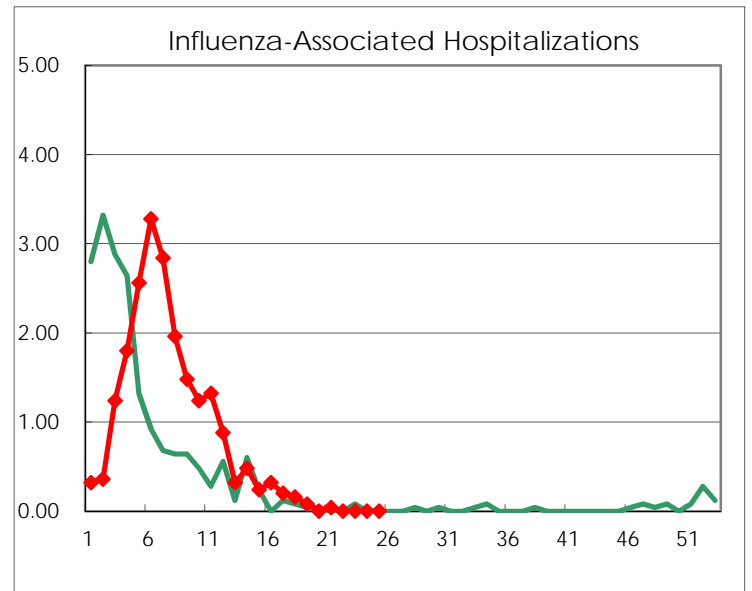
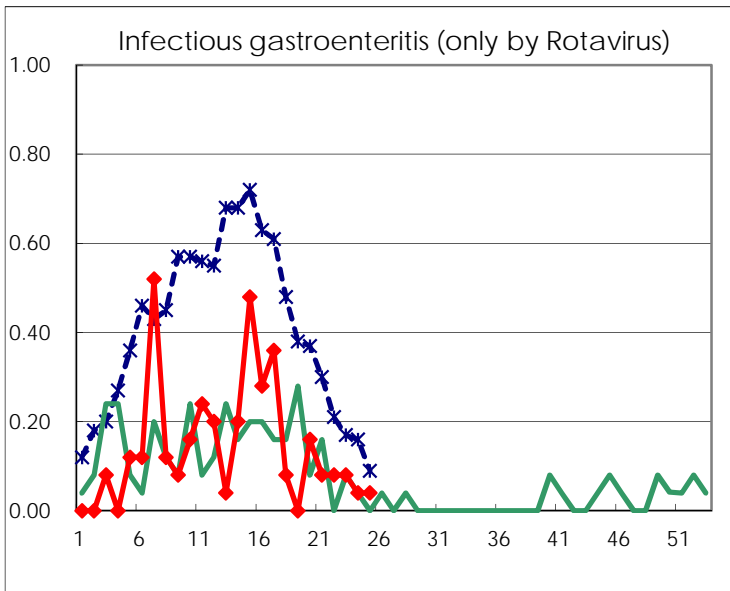
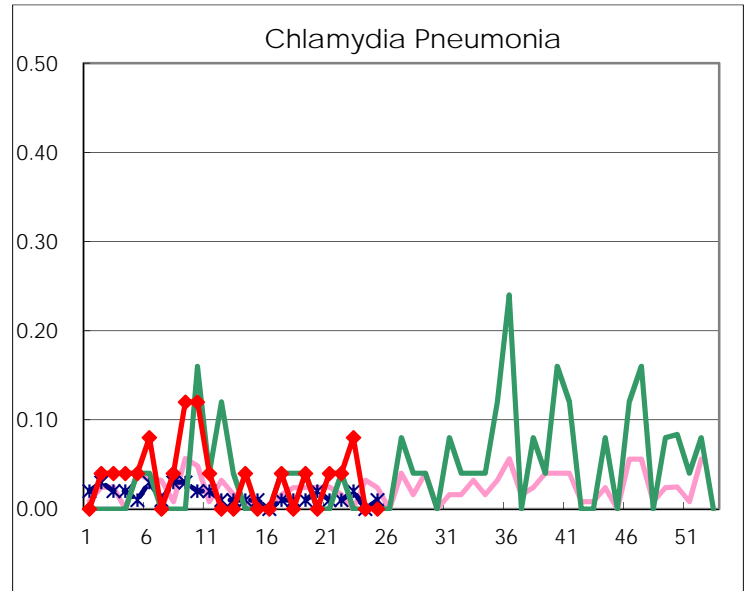
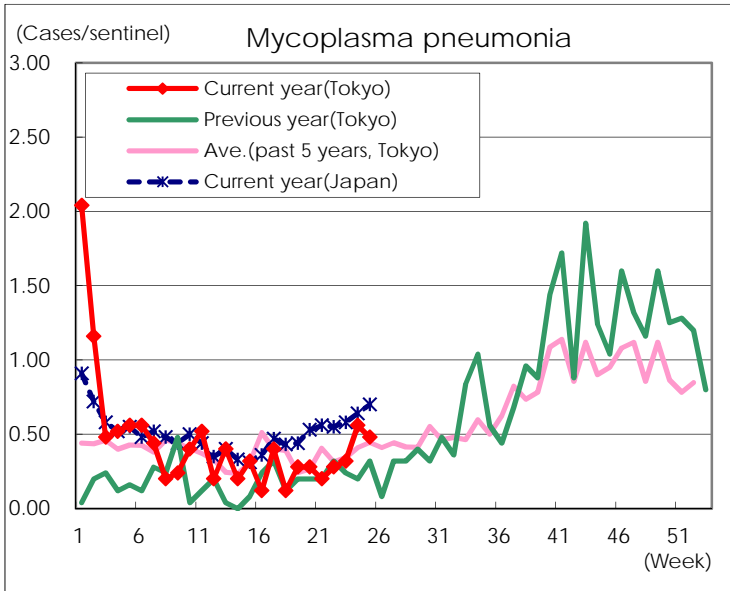
(Blank means 0.)

Disease Trend Graph (weekly reported cases per sentinel in comparison)









Number of sentinel facilities for weekly reporting		
Types of sentinels	Number of sentinels	Sentinels having reported
Pediatric	264	258
Influenza	419	411
Ophthalmic	39	39
Specially-designated	25	25