

14 July 2016 / Number 27

Surveillance System in Tokyo, Japan

The infectious diseases which all physicians must report

All physicians must report to health centers the incidence of the diseases which are shown at page one. Health centers electronically report the individual cases to Tokyo Metropolitan Infectious Disease Surveillance Center.

The infectious diseases required to be reported by the sentinels

The numbers of patients who visit the sentinel clinics or hospitals during a week are reported to health centers in Tokyo. And they electronically report the numbers to Tokyo Metropolitan Infectious Disease Surveillance Center. We have about 500 sentinel clinics and hospitals in Tokyo.

Tokyo Metropolitan Institute of Public Health

TEL:81-3-3363-3213 FAX:81-3-5332-7365

e-mail:www@tokyo-eiken.go.jp

URL:idsc.tokyo-eiken.go.jp/

Number of patients with the diseases which all physicians must report

Category	Diseases	Tokyo				Japan		
		24th	25th	26th	27th	Cum 2016	27th	Cum 2016
I	Ebola hemorrhagic fever							
	Crimean-Congo hemorrhagic fever							
	Smallpox							
	South American hemorrhagic fever							
	Plague							
	Marburg disease							
	Lassa fever							
II	Acute poliomyelitis							
	Tuberculosis	72	84	77	54	1,897	332	12,124
	Diphtheria							
	Severe Acute Respiratory Syndrome(SARS)							
	Middle East Respiratory Syndrome (MERS)							
	Avian influenza H5N1							
	Avian influenza H7N9							
III	Cholera							3
	Shigellosis			2		21	2	67
	Enterohemorrhagic Escherichia coli infection	11	31	26	14	141	110	922
	Typhoid fever			2	2	14	2	29
	Paratyphoid fever		1			5		9
IV	Hepatitis E	1	2		1	27	9	227
	West Nile fever							
	Hepatitis A	1	2	1	1	47	3	178
	Echinococcosis						1	11
	Yellow fever							
	Psittacosis				1	1	2	4
	Omsk hemorrhagic fever							
	Relapsing fever							2
	Kyasanur forest disease							
	Q fever							
	Rabies							
	Coccidioidomycosis		1			2		2
	Monkeypox							
	Zika virus infection							7
	Severe Fever with Thrombocytopenia Syndrome						1	31
	Hemorrhagic fever with renal syndrome							
	Western equine encephalitis							
	Tick-borne encephalitis							
	Anthrax							
	Chikungunya fever					3		3
	Scrub typhus(Tsutsugamushi disease)						1	81
	Dengue fever	1		1	2	43	4	163
	Eastern equine encephalitis							
	Avian influenza (excluding H5N1 and H7N9)							
	Nipah virus infection							
	Japanese spotted fever						9	84
	Japanese encephalitis							
	Hantavirus pulmonary syndrome							
	Herpes B virus infection							
	Glanders							
	Brucellosis							
	Venezuelan equine encephalitis							
Hendra virus infection								
Epidemic typhus								
Botulism					1		2	
Malaria				1	7		24	
Tularemia								
Lyme disease							2	
Lyssavirus infection(excluding rabies)								
Rift valley fever								
Melioidosis								
Legionellosis	4	4	3	1	59	49	657	
Leptospirosis							4	
Rocky mountain spotted fever								

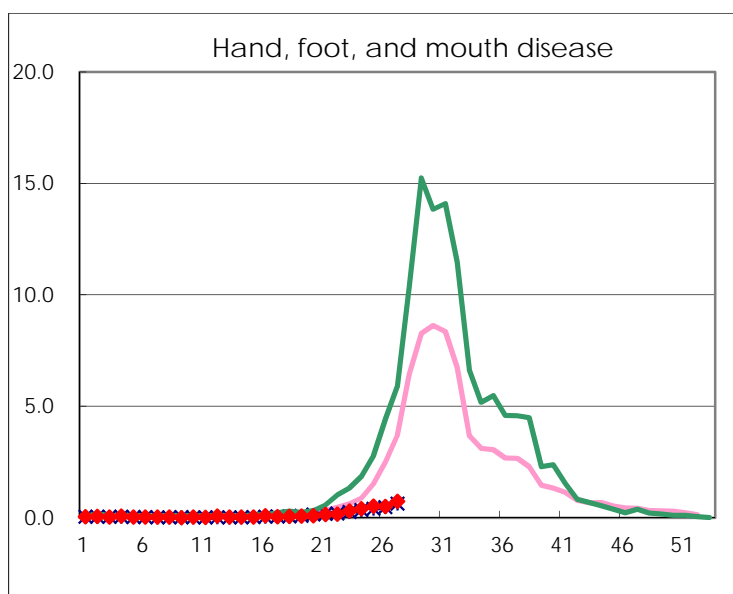
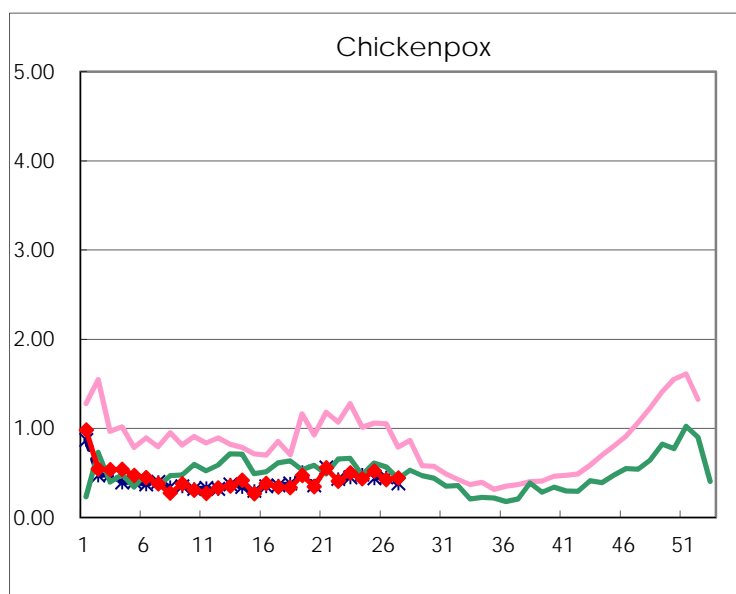
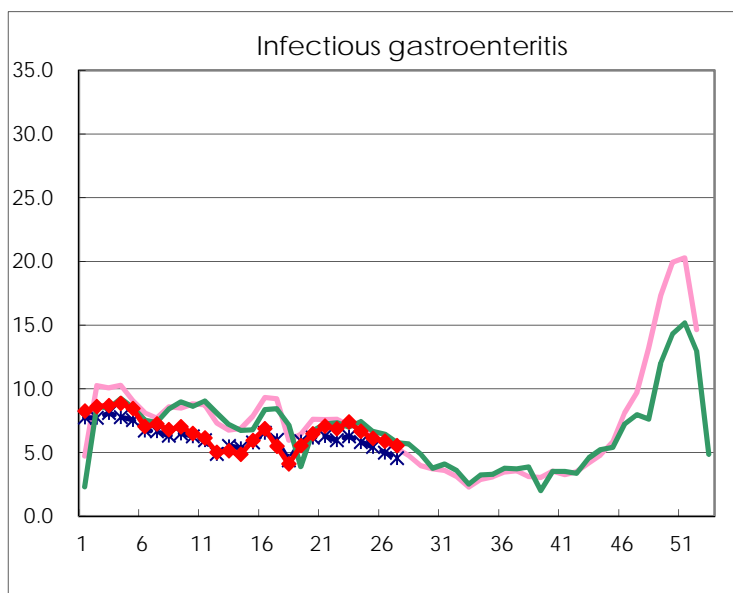
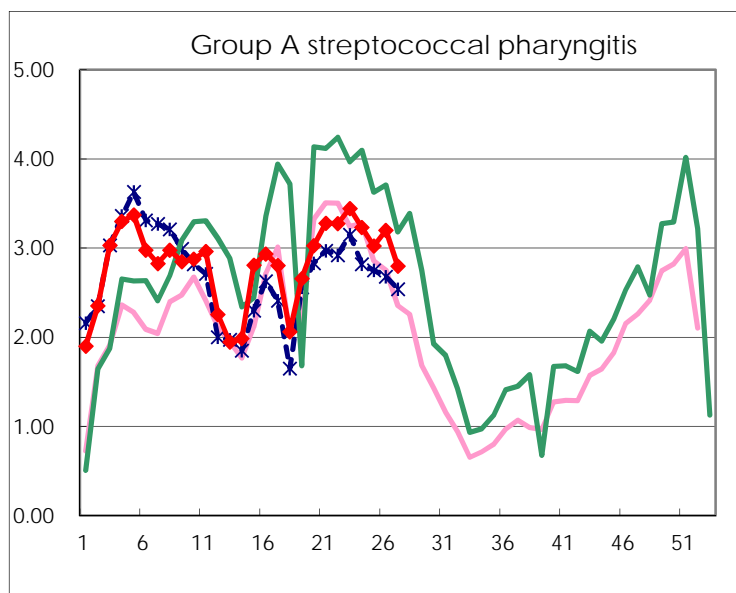
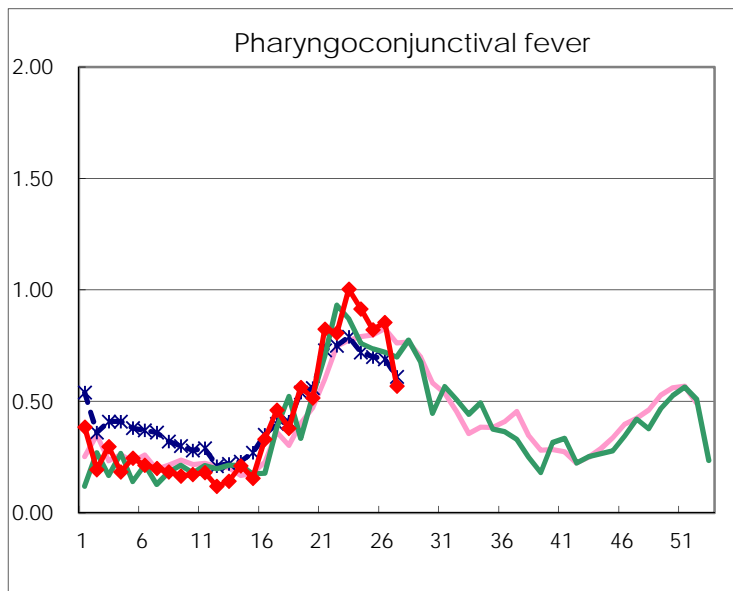
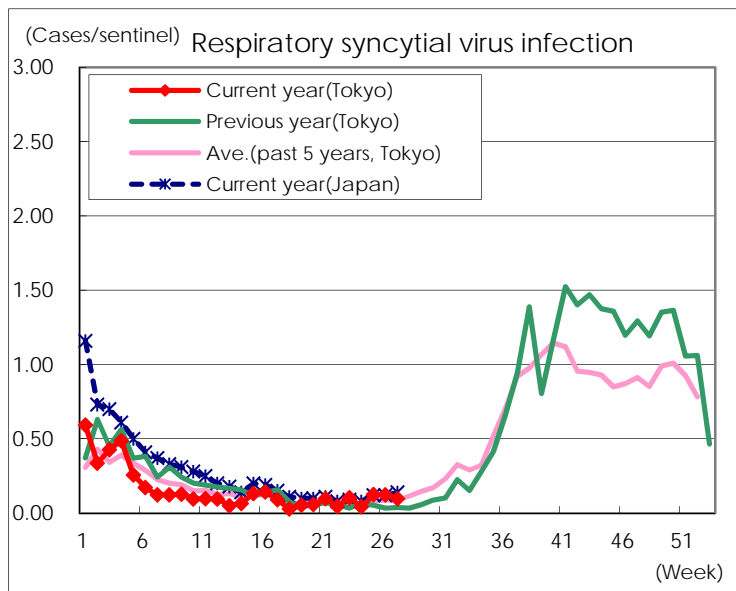
Category	Diseases	Tokyo					Japan	
		24th	25th	26th	27th	Cum 2016	27th	Cum 2016
V	Amebiasis	10	7	4	6	124	17	609
	Viral hepatitis(excluding hepatitis A and E)	2	1		1	33	3	129
	CRE infection		3	3	2	94	12	706
	Acute encephalitis(excluding JE and WNE)	1	1	1	1	60	4	466
	Cryptosporidiosis							6
	Creutzfeldt-Jakob disease			1		10	1	89
	Severe invasive streptococcal infections(TSLS)	2	1	2		36	9	277
	Acquired immunodeficiency syndrome (AIDS)	5	10	8	10	247	20	730
	Giardiasis				1	8	3	31
	Invasive <i>Haemophilus influenzae</i> disease	1	1	1		22	2	179
	Invasive meningococcal disease				1	3	1	26
	Invasive pneumococcal disease	10	10	1	5	215	17	1,611
	Varicella (limited to hospitalized case)	2		2	1	31	4	166
	Congenital rubella syndrome							
	Syphilis	41	34	38	35	864	56	2,110
	Disseminated cryptococcosis					9	2	65
	Tetanus					3	1	62
	Vancomycin-resistant <i>S. aureus</i> infection							
	Vancomycin-resistant Enterococcus infection							23
	Rubella				1	12	3	83
Measles					3		10	
MDRA infection					1		18	

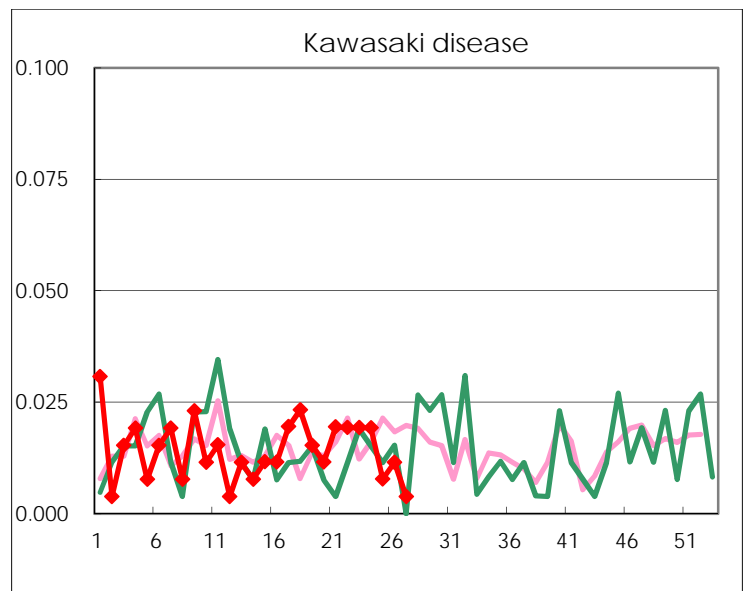
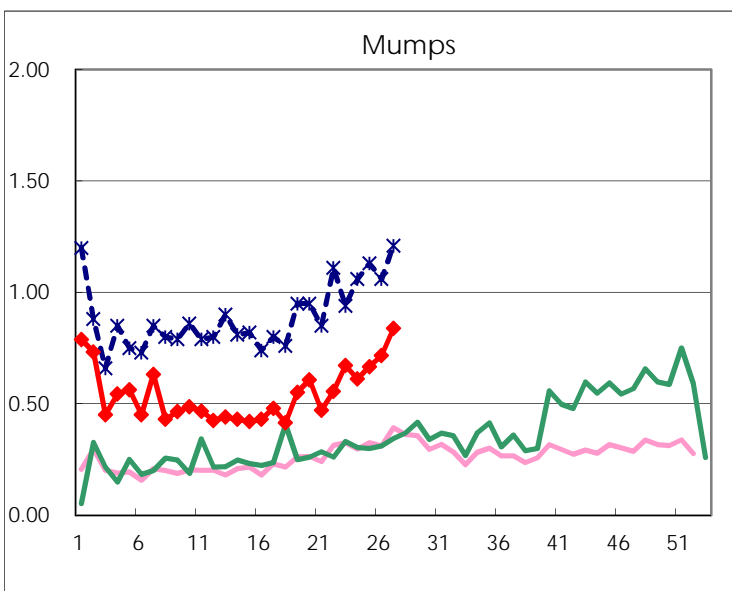
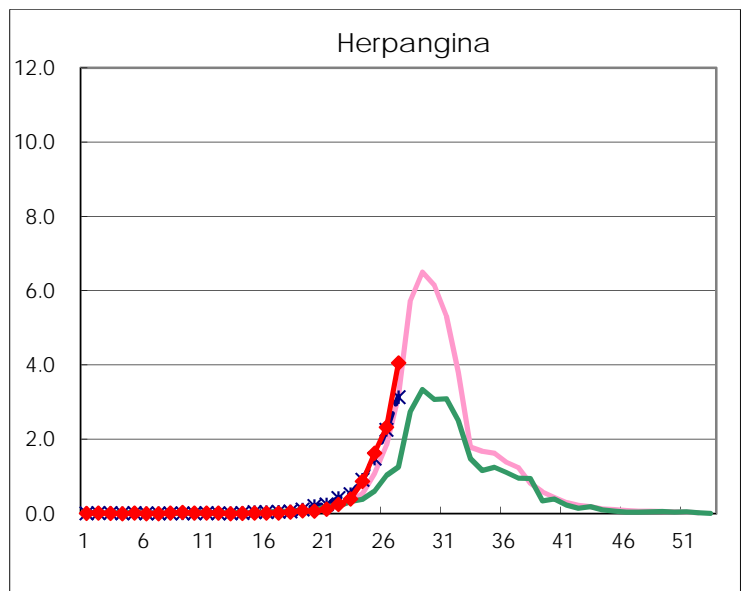
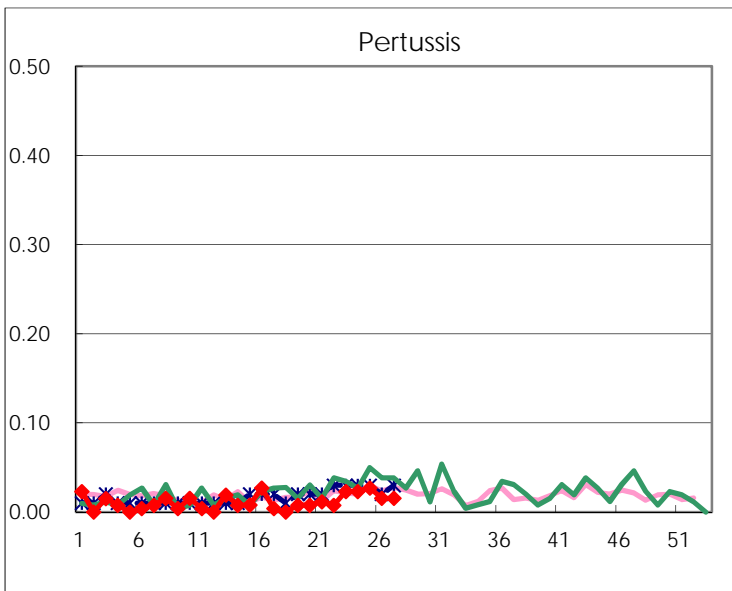
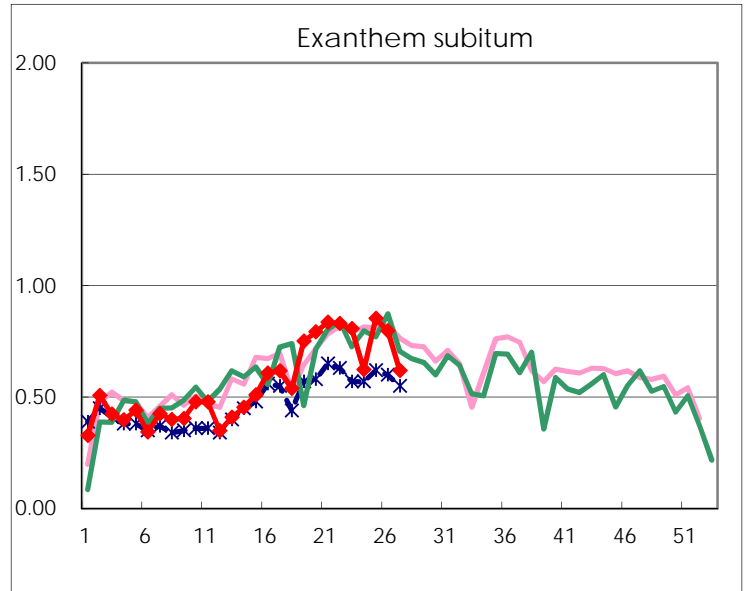
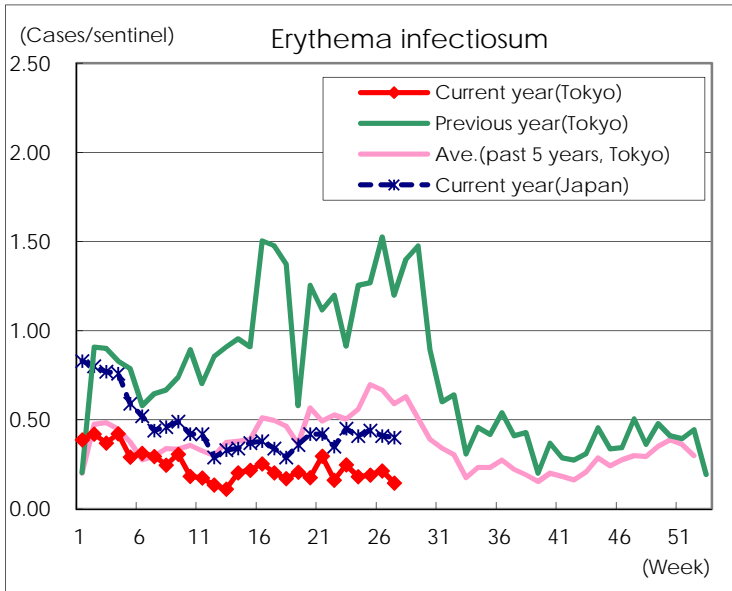
Number of patients with the diseases to be reported
by the designated clinics and hospitals

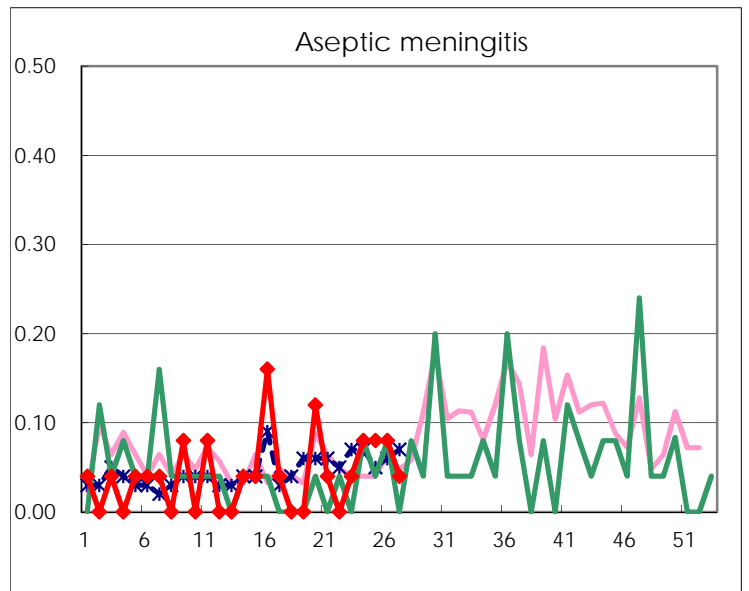
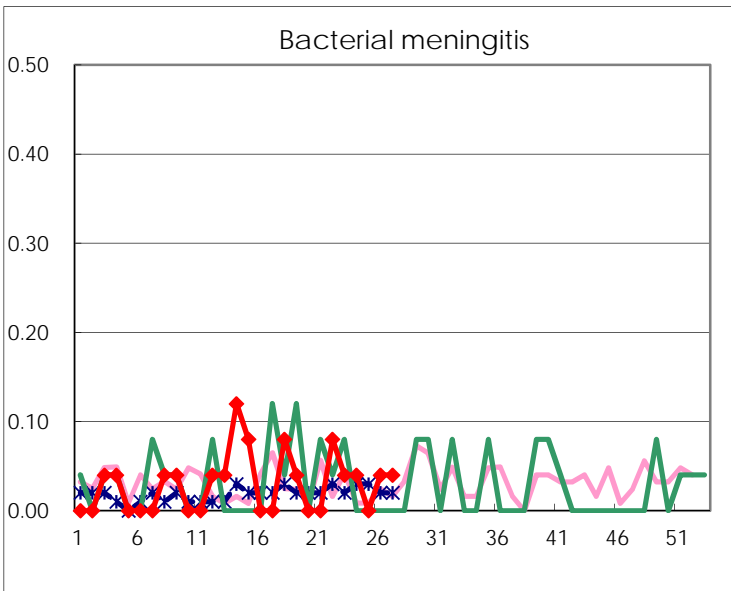
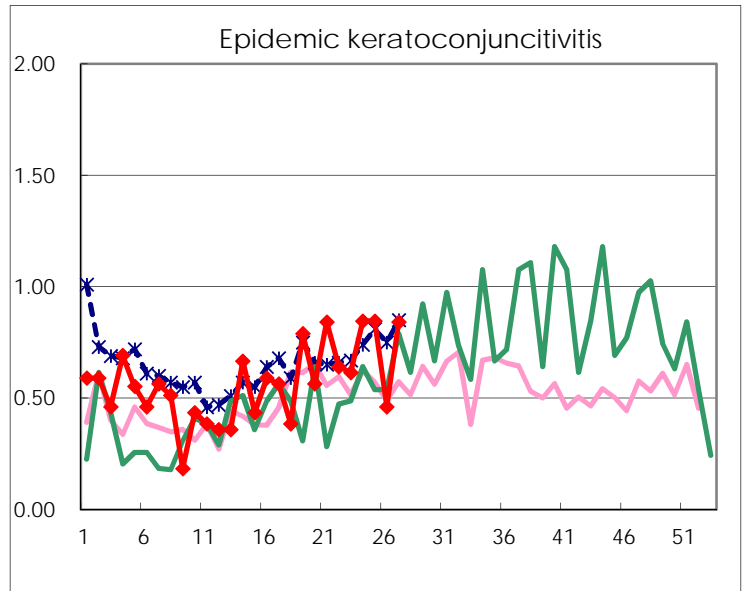
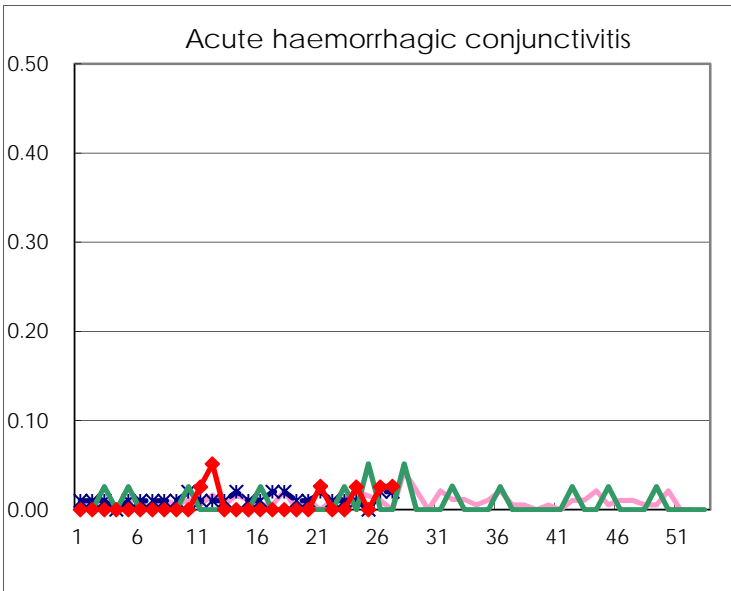
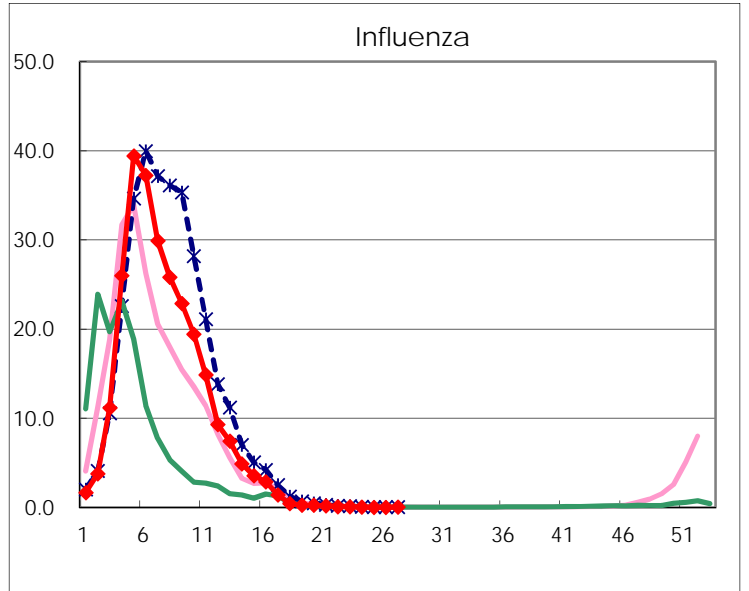
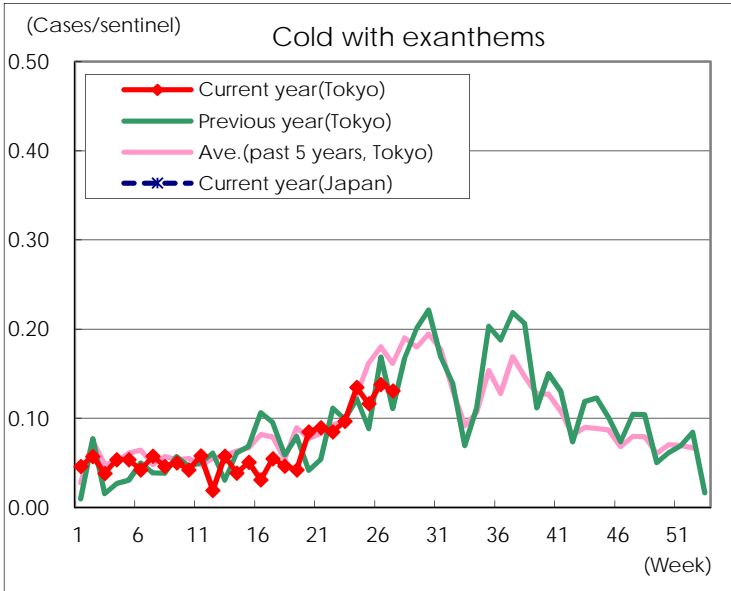
Diseases	Tokyo				
	24th	25th	26th	27th	/sentinel
Respiratory syncytial virus infection	11	32	32	25	0.10
Pharyngoconjunctival fever	238	212	223	148	0.57
Group A streptococcal pharyngitis	840	780	835	727	2.80
Infectious gastroenteritis	1,730	1,575	1,535	1,440	5.54
Chickenpox	113	134	111	115	0.44
Hand, foot, and mouth disease	103	135	130	191	0.73
Erythema infectiosum	47	49	56	38	0.15
Exanthem subitum	162	220	208	161	0.62
Pertussis	6	7	4	4	0.02
Herpangina	226	420	608	1,055	4.06
Mumps	159	172	187	218	0.84
Kawasaki disease	5	2	3	1	
Cold with exanthems	35	30	36	34	0.13
Influenza	19	8	7	9	0.02
Acute hemorrhagic conjunctivitis	1		1	1	0.03
Epidemic keratoconjunctivitis	33	33	18	32	0.84
Bacterial meningitis	1		1	1	0.04
Aseptic meningitis	2	2	2	1	0.04
Mycoplasma pneumonia	14	13	14	14	0.56
Chlamydial pneumonia (excluding psittacosis)			2	1	0.04
Infectious gastroenteritis (only by Rotavirus)	1	1		1	0.04
Influenza-Associated Hospitalizations					

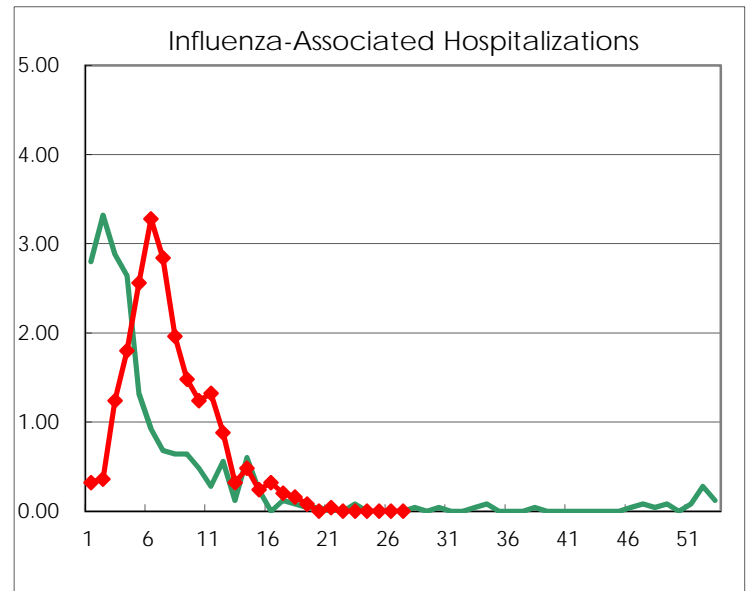
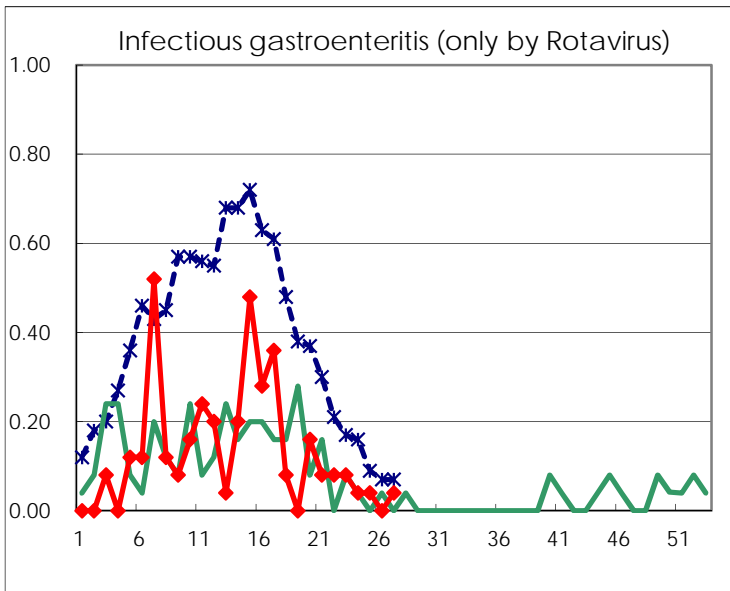
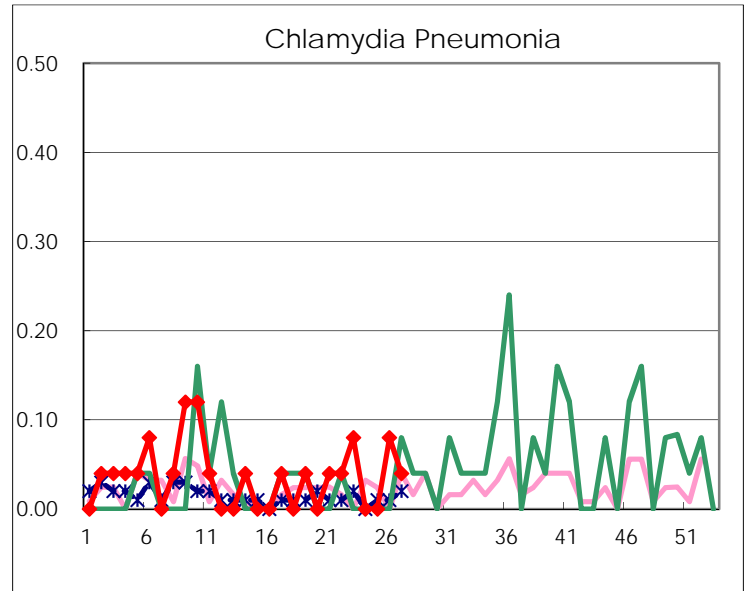
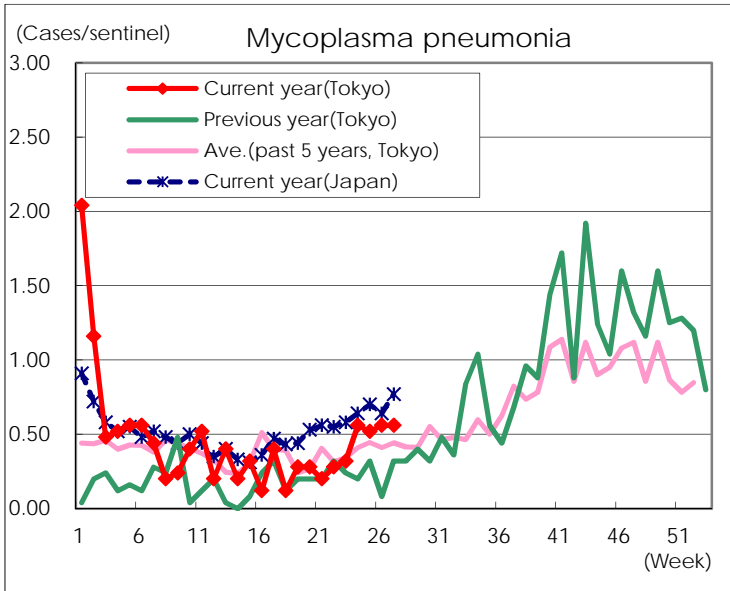
(Blank means 0.)

Disease Trend Graph (weekly reported cases per sentinel in comparison)









Number of sentinel facilities for weekly reporting		
Types of sentinels	Number of sentinels	Sentinels having reported
Pediatric	264	260
Influenza	419	413
Ophthalmic	39	38
Specially-designated	25	25