

**21 July 2016 / Number 28**

## Surveillance System in Tokyo, Japan

The infectious diseases which all physicians must report

All physicians must report to health centers the incidence of the diseases which are shown at page one. Health centers electronically report the individual cases to Tokyo Metropolitan Infectious Disease Surveillance Center.

The infectious diseases required to be reported by the sentinels

The numbers of patients who visit the sentinel clinics or hospitals during a week are reported to health centers in Tokyo. And they electronically report the numbers to Tokyo Metropolitan Infectious Disease Surveillance Center. We have about 500 sentinel clinics and hospitals in Tokyo.

Tokyo Metropolitan Institute of Public Health

TEL:81-3-3363-3213 FAX:81-3-5332-7365

e-mail:[www@tokyo-eiken.go.jp](mailto:www@tokyo-eiken.go.jp)

URL:[idsc.tokyo-eiken.go.jp/](http://idsc.tokyo-eiken.go.jp/)

---

Number of patients with the diseases which all physicians must report

Category	Diseases	Tokyo				Cum 2016	Japan	
		25th	26th	27th	28th		28th	Cum 2016
I	Ebola hemorrhagic fever							
	Crimean-Congo hemorrhagic fever							
	Smallpox							
	South American hemorrhagic fever							
	Plague							
	Marburg disease							
	Lassa fever							
II	Acute poliomyelitis							
	Tuberculosis	84	77	60	79	1,981	357	12,686
	Diphtheria							
	Severe Acute Respiratory Syndrome(SARS)							
	Middle East Respiratory Syndrome (MERS)							
	Avian influenza H5N1							
	Avian influenza H7N9							
III	Cholera							3
	Shigellosis		2			21	1	68
	Enterohemorrhagic Escherichia coli infection	31	26	14	14	155	119	1,056
	Typhoid fever		2	2		14		29
	Paratyphoid fever	1				5		9
IV	Hepatitis E	2		1	1	28	5	233
	West Nile fever							
	Hepatitis A	2	1	1	1	48	4	183
	Echinococcosis							11
	Yellow fever							
	Psittacosis			1		1		4
	Omsk hemorrhagic fever							
	Relapsing fever							4
	Kyasanur forest disease							
	Q fever							
	Rabies							
	Coccidioidomycosis	1				2		2
	Monkeypox							
	Zika virus infection							7
	Severe Fever with Thrombocytopenia Syndrome							32
	Hemorrhagic fever with renal syndrome							
	Western equine encephalitis							
	Tick-borne encephalitis							
	Anthrax							
	Chikungunya fever					3		3
	Scrub typhus(Tsutsugamushi disease)							83
	Dengue fever		1	2	4	47	8	176
	Eastern equine encephalitis							
	Avian influenza (excluding H5N1 and H7N9)							
	Nipah virus infection							
	Japanese spotted fever						4	88
	Japanese encephalitis							
	Hantavirus pulmonary syndrome							
	Herpes B virus infection							
	Glanders							
	Brucellosis							
	Venezuelan equine encephalitis							
	Hendra virus infection							
Epidemic typhus								
Botulism					1		2	
Malaria			1	1	8	1	25	
Tularemia								
Lyme disease							2	
Lyssavirus infection(excluding rabies)								
Rift valley fever								
Melioidosis								
Legionellosis	4	3	1	1	60	33	696	
Leptospirosis							5	
Rocky mountain spotted fever								

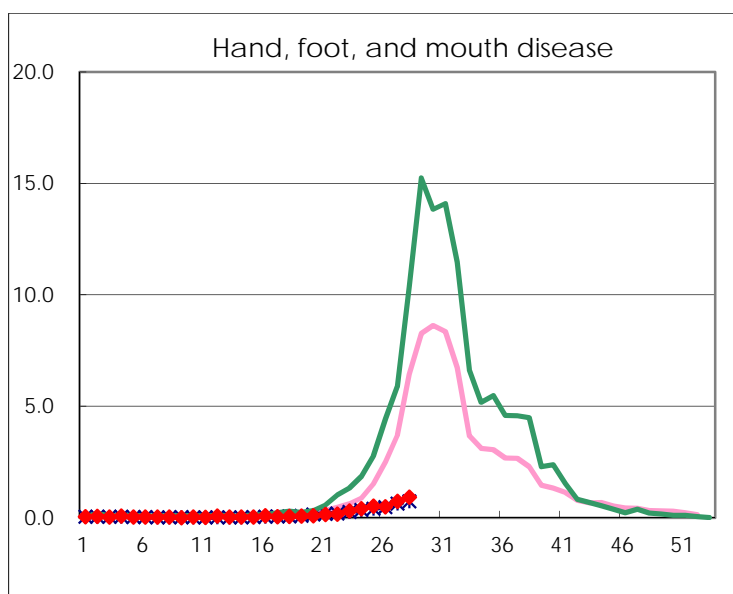
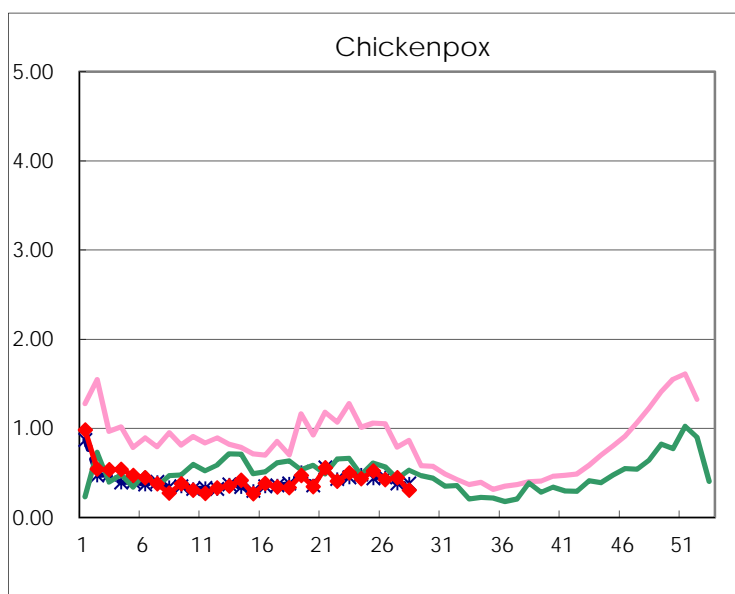
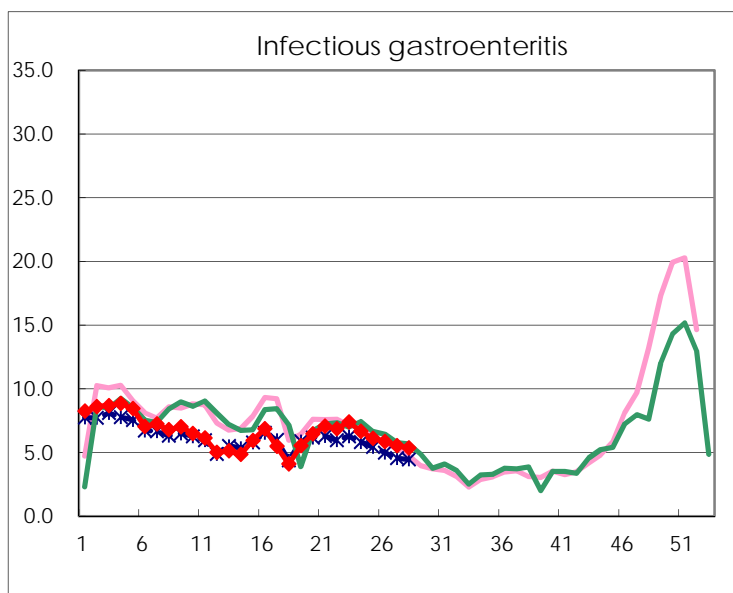
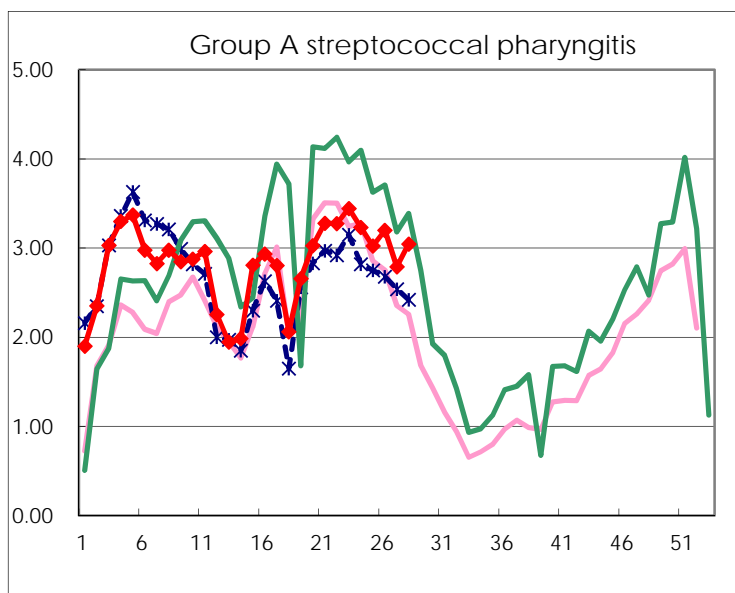
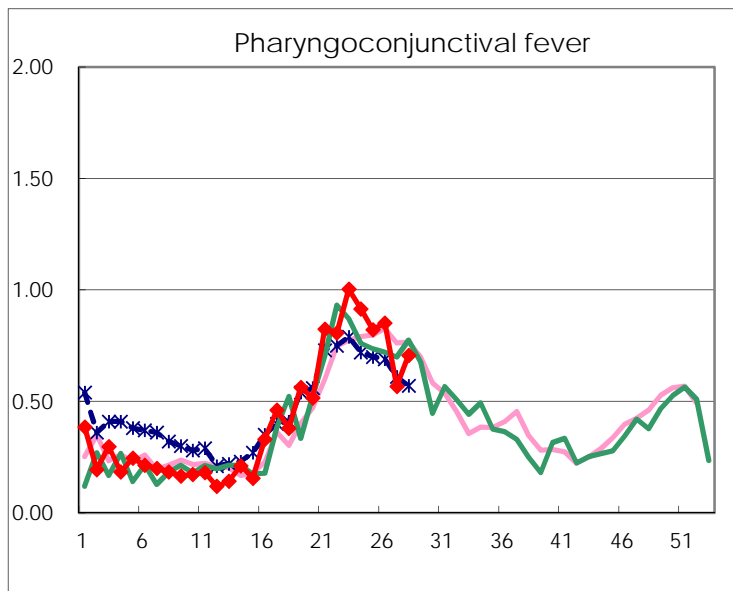
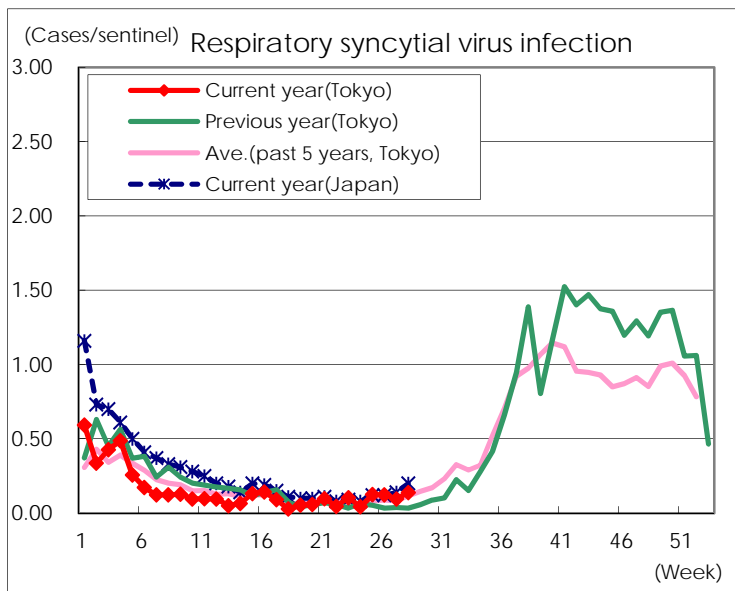
Category	Diseases	Tokyo					Japan	
		25th	26th	27th	28th	Cum 2016	28th	Cum 2016
V	Amebiasis	7	4	6	4	128	15	628
	Viral hepatitis(excluding hepatitis A and E)	1		2	2	36	7	140
	CRE infection	3	3	2	2	96	18	732
	Acute encephalitis(excluding JE and WNE)	1	1	1	3	63	7	479
	Cryptosporidiosis							6
	Creutzfeldt-Jakob disease		1			10	2	92
	Severe invasive streptococcal infections(TSLS)	1	2		1	37	2	284
	Acquired immunodeficiency syndrome (AIDS)	10	8	10	5	252	7	751
	Giardiasis			1	1	9	1	33
	Invasive <i>Haemophilus influenzae</i> disease	1	1		1	23	4	187
	Invasive meningococcal disease			1		3		26
	Invasive pneumococcal disease	10	1	5	5	220	13	1,632
	Varicella (limited to hospitalized case)		2	1		31	3	170
	Congenital rubella syndrome							
	Syphilis	34	38	36	27	892	51	2,202
	Disseminated cryptococcosis					9	2	67
	Tetanus					3	5	67
	Vancomycin-resistant <i>S. aureus</i> infection							
	Vancomycin-resistant Enterococcus infection							24
	Rubella			1		12	5	88
Measles					3	3	13	
MDRA infection					1		18	

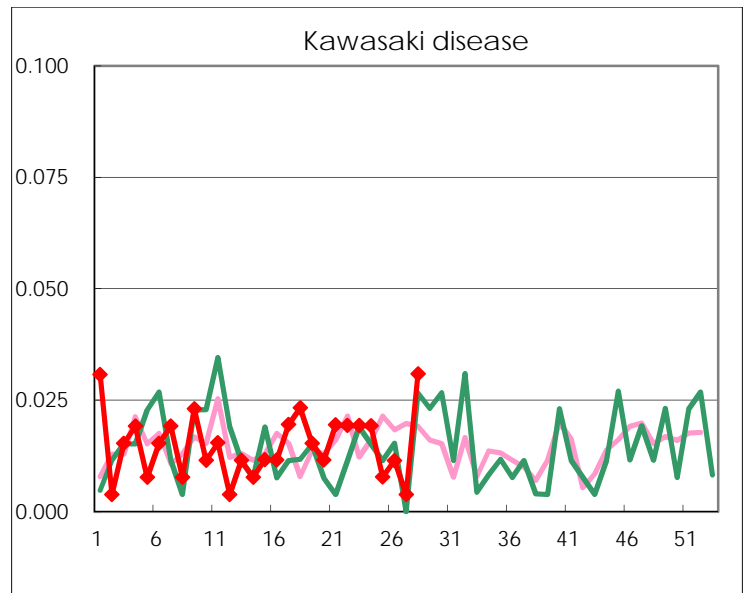
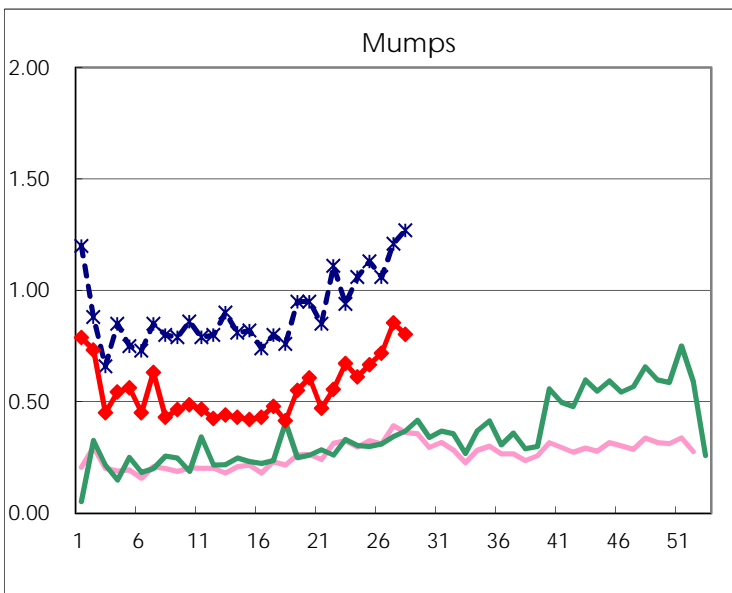
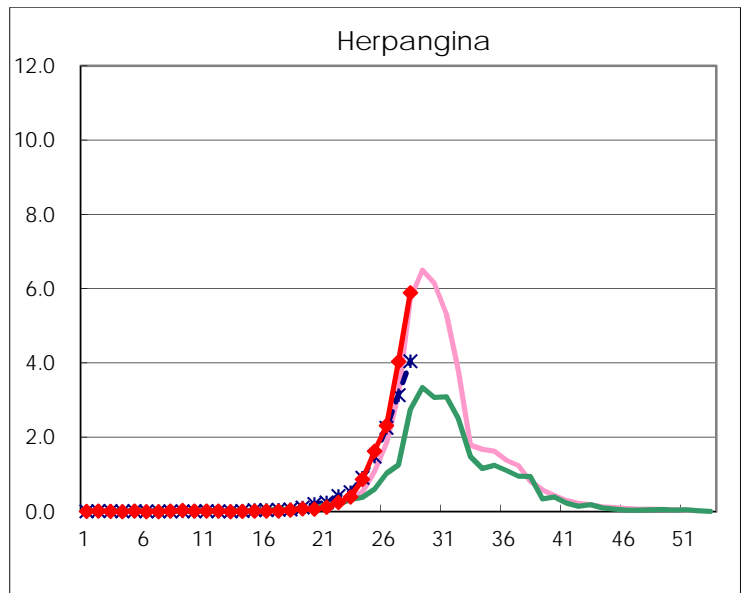
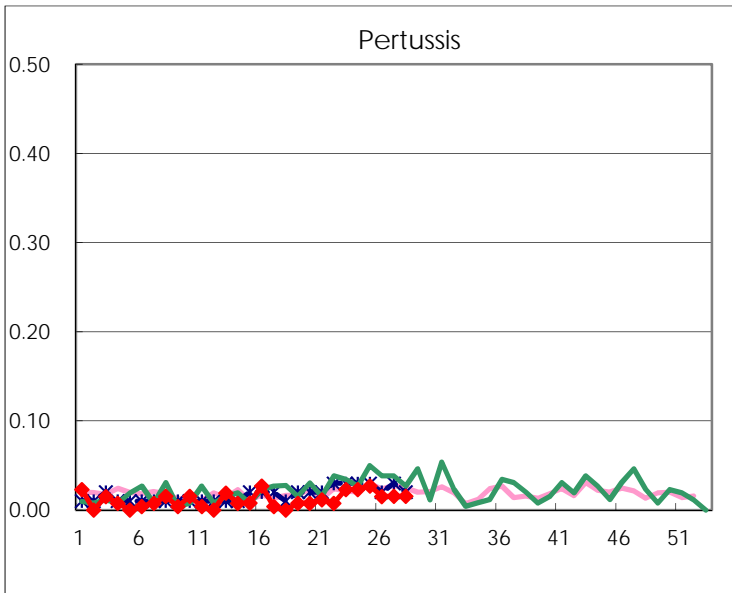
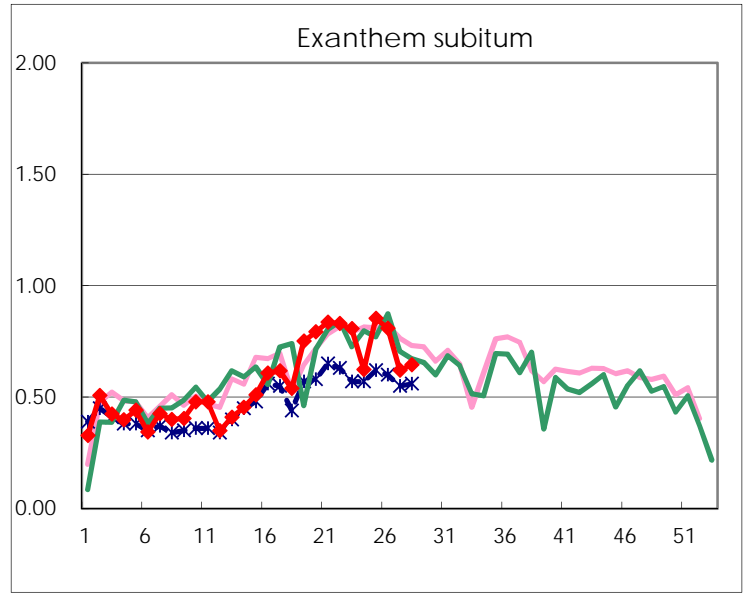
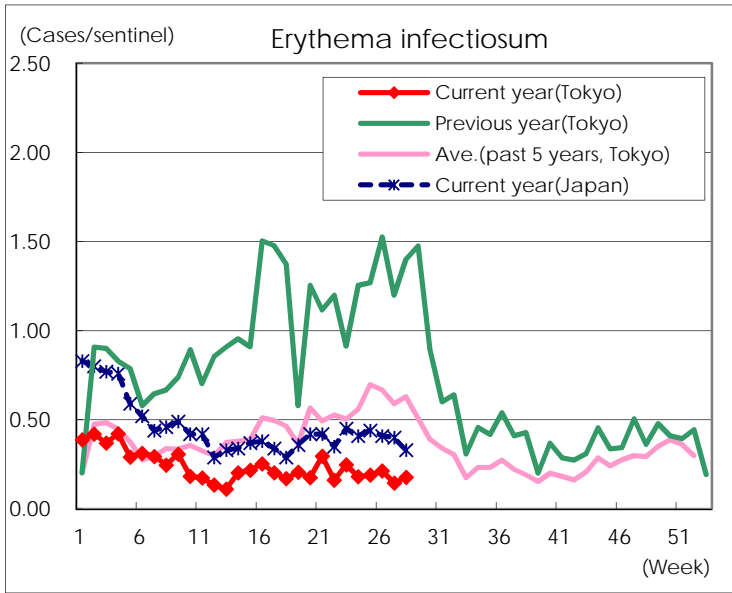
Number of patients with the diseases to be reported  
by the designated clinics and hospitals

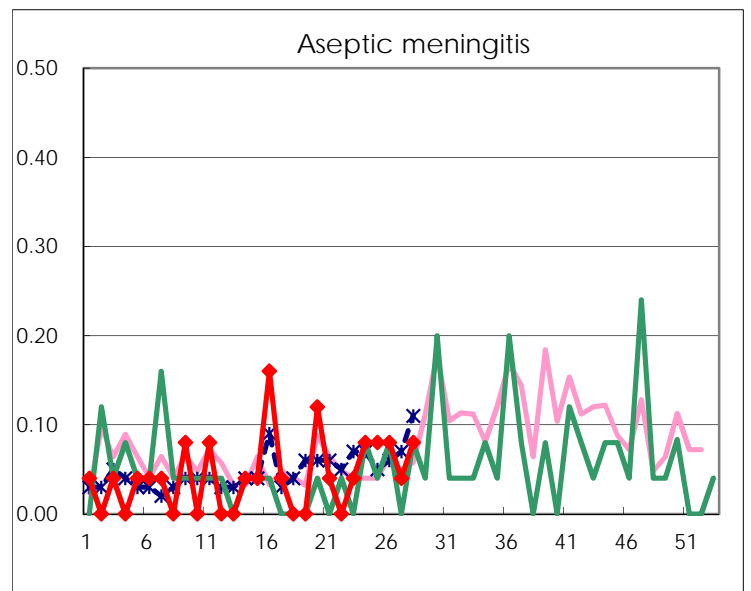
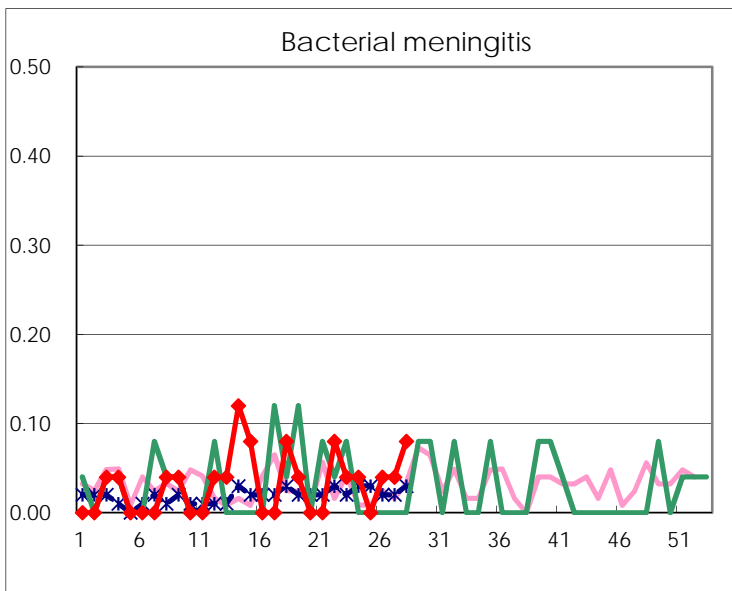
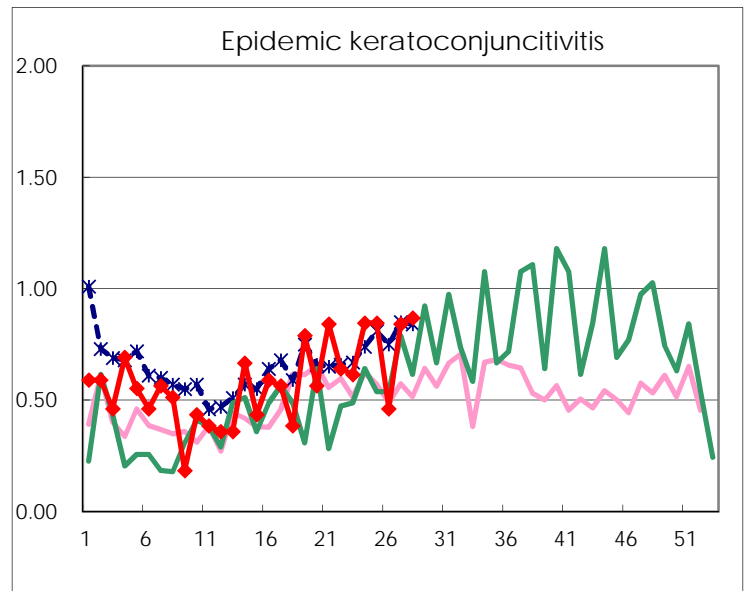
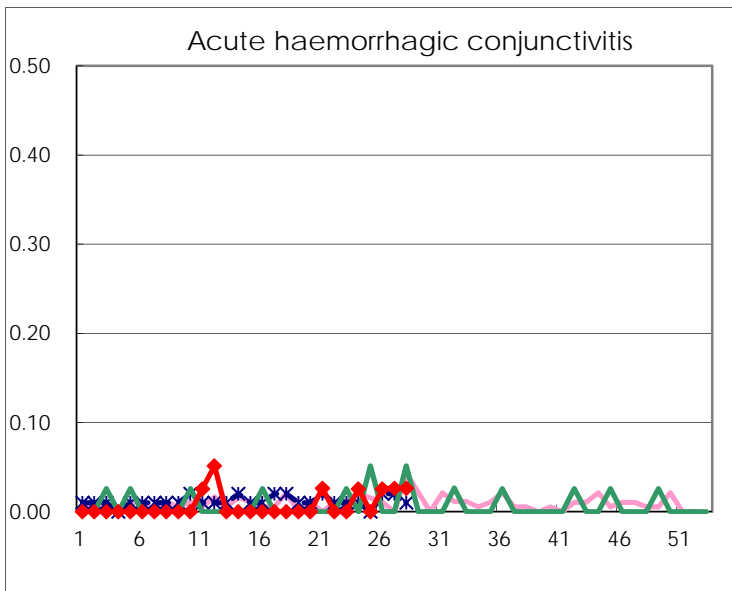
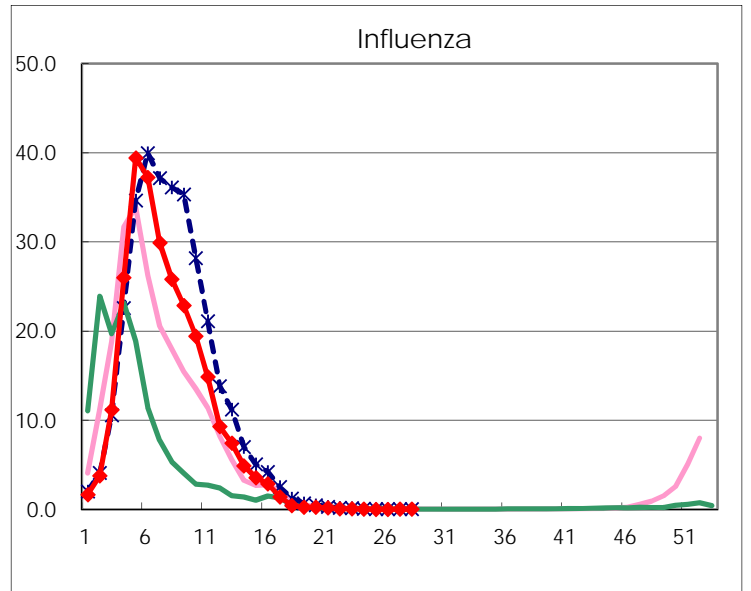
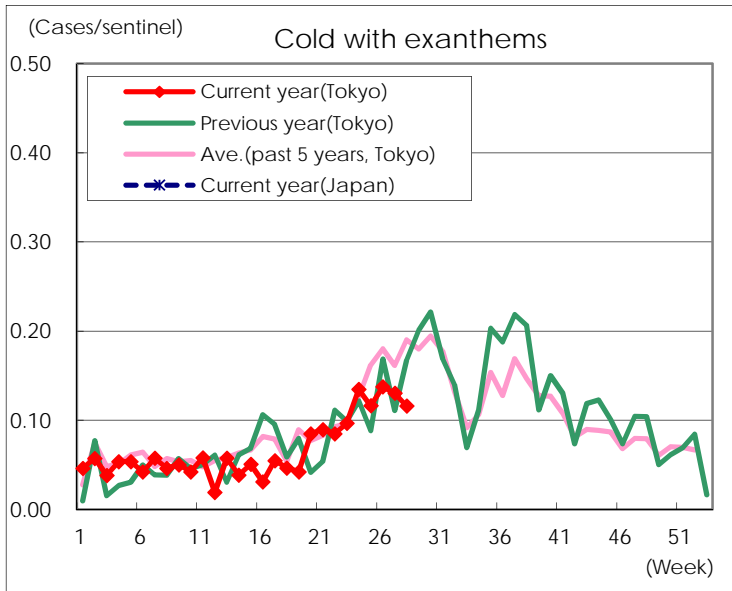
Diseases	Tokyo				
	25th	26th	27th	28th	/sentinel
Respiratory syncytial virus infection	32	32	25	36	0.14
Pharyngoconjunctival fever	212	223	148	183	0.71
Group A streptococcal pharyngitis	780	838	728	789	3.05
Infectious gastroenteritis	1,575	1,537	1,442	1,390	5.37
Chickenpox	134	111	116	79	0.31
Hand, foot, and mouth disease	135	130	191	238	0.92
Erythema infectiosum	49	56	38	46	0.18
Exanthem subitum	220	212	162	167	0.64
Pertussis	7	4	4	4	0.02
Herpangina	420	608	1,055	1,526	5.89
Mumps	172	188	223	208	0.80
Kawasaki disease	2	3	1	8	0.03
Cold with exanthems	30	36	34	30	0.12
Influenza	8	7	9	9	0.02
Acute hemorrhagic conjunctivitis		1	1	1	0.03
Epidemic keratoconjunctivitis	33	18	32	33	0.87
Bacterial meningitis		1	1	2	0.08
Aseptic meningitis	2	2	1	2	0.08
Mycoplasma pneumonia	13	14	14	26	1.04
Chlamydial pneumonia (excluding psittacosis)		2	1		
Infectious gastroenteritis (only by Rotavirus)	1		1		
Influenza-Associated Hospitalizations				1	0.04

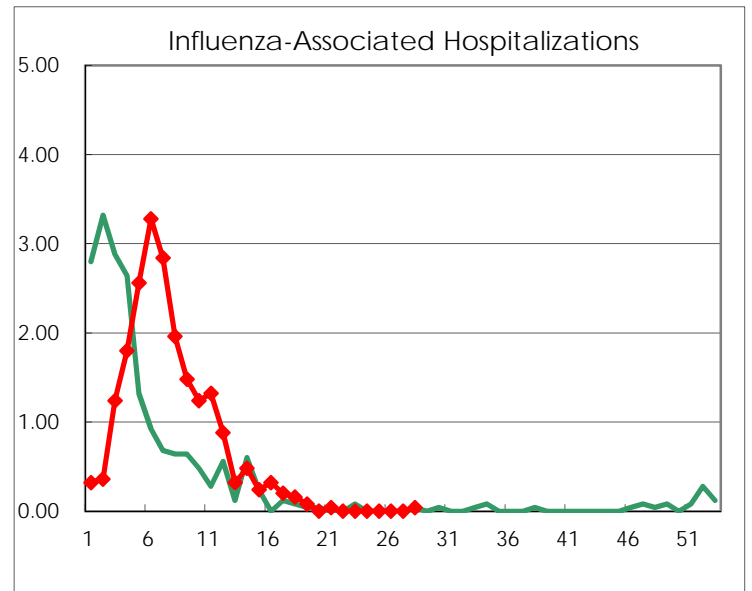
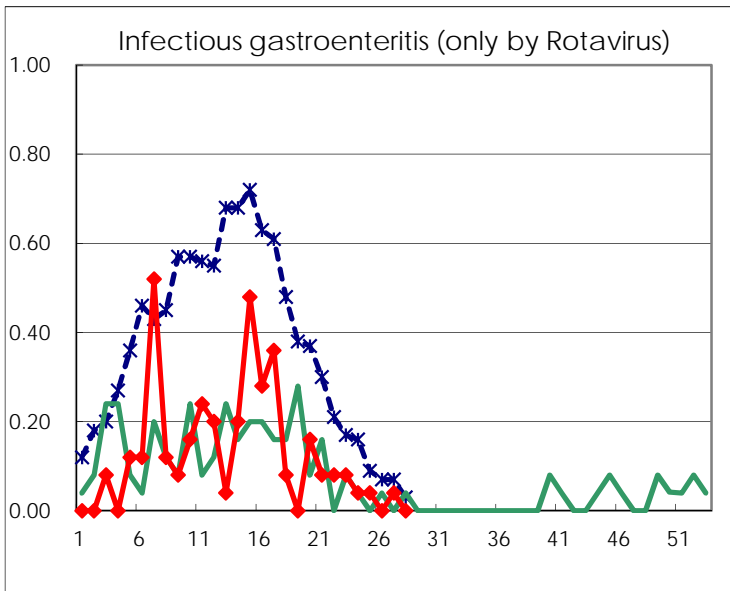
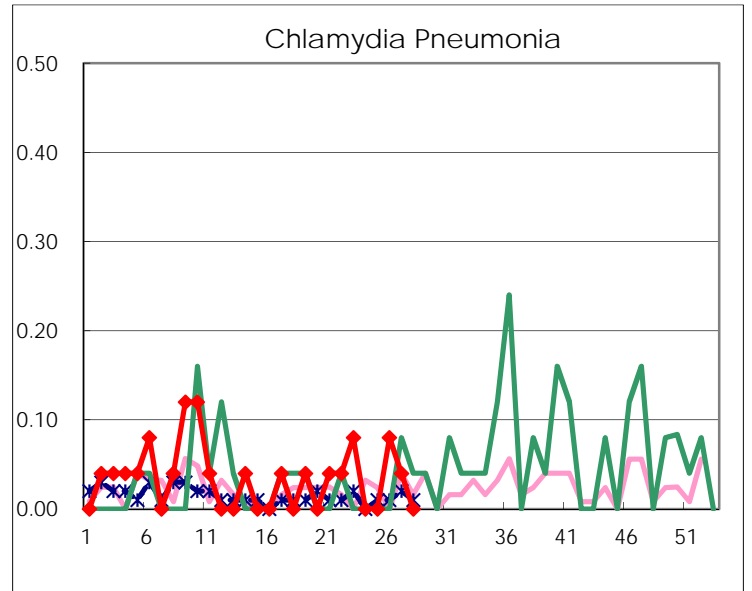
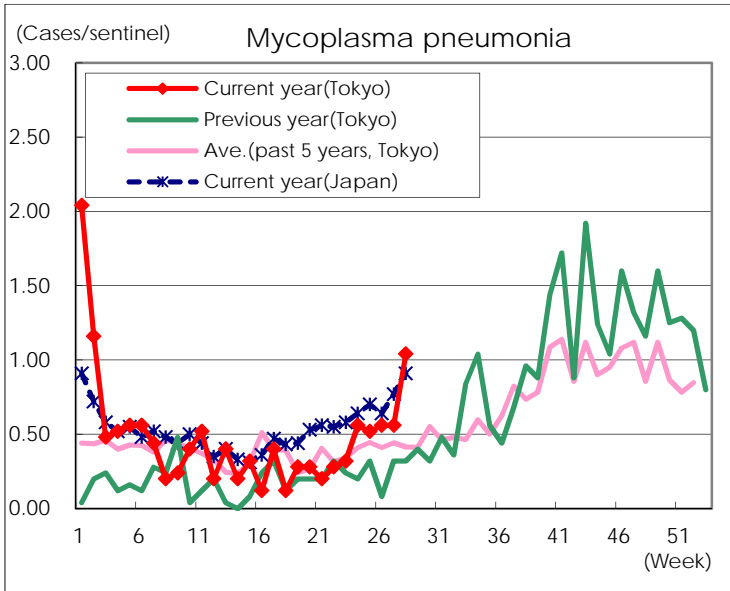
( Blank means 0. )

# Disease Trend Graph (weekly reported cases per sentinel in comparison)









Number of sentinel facilities for weekly reporting		
Types of sentinels	Number of sentinels	Sentinels having reported
Pediatric	264	259
Influenza	419	409
Ophthalmic	39	38
Specially-designated	25	25