

**28 July 2016 / Number 29**

## Surveillance System in Tokyo, Japan

The infectious diseases which all physicians must report

All physicians must report to health centers the incidence of the diseases which are shown at page one. Health centers electronically report the individual cases to Tokyo Metropolitan Infectious Disease Surveillance Center.

The infectious diseases required to be reported by the sentinels

The numbers of patients who visit the sentinel clinics or hospitals during a week are reported to health centers in Tokyo. And they electronically report the numbers to Tokyo Metropolitan Infectious Disease Surveillance Center. We have about 500 sentinel clinics and hospitals in Tokyo.

Tokyo Metropolitan Institute of Public Health

TEL:81-3-3363-3213 FAX:81-3-5332-7365

e-mail:[www@tokyo-eiken.go.jp](mailto:www@tokyo-eiken.go.jp)

URL:[idsc.tokyo-eiken.go.jp/](http://idsc.tokyo-eiken.go.jp/)

---

Number of patients with the diseases which all physicians must report

Category	Diseases	Tokyo					Japan	
		26th	27th	28th	29th	Cum 2016	29th	Cum 2016
I	Ebola hemorrhagic fever							
	Crimean-Congo hemorrhagic fever							
	Smallpox							
	South American hemorrhagic fever							
	Plague							
	Marburg disease							
	Lassa fever							
II	Acute poliomyelitis							
	Tuberculosis	77	63	90	57	2,053	326	13,149
	Diphtheria							
	Severe Acute Respiratory Syndrome(SARS)							
	Middle East Respiratory Syndrome (MERS)							
	Avian influenza H5N1							
	Avian influenza H7N9							
III	Cholera							3
	Shigellosis	2			1	22	4	72
	Enterohemorrhagic Escherichia coli infection	26	14	15	14	170	92	1,165
	Typhoid fever	2	2			14		29
	Paratyphoid fever					5		9
IV	Hepatitis E		1	1		28	4	241
	West Nile fever							
	Hepatitis A	1	1	2		49	5	193
	Echinococcosis							12
	Yellow fever							
	Psittacosis		1			1		4
	Omsk hemorrhagic fever							
	Relapsing fever							4
	Kyasanur forest disease							
	Q fever							
	Rabies							
	Coccidioidomycosis					2		2
	Monkeypox							
	Zika virus infection							7
	Severe Fever with Thrombocytopenia Syndrome							33
	Hemorrhagic fever with renal syndrome							
	Western equine encephalitis							
	Tick-borne encephalitis							
	Anthrax							
	Chikungunya fever					3		3
	Scrub typhus(Tsutsugamushi disease)						2	85
	Dengue fever	1	2	4	1	48	4	181
	Eastern equine encephalitis							
	Avian influenza (excluding H5N1 and H7N9)							
	Nipah virus infection							
	Japanese spotted fever						5	94
	Japanese encephalitis							
	Hantavirus pulmonary syndrome							
	Herpes B virus infection							
	Glanders							
	Brucellosis							
	Venezuelan equine encephalitis							
Hendra virus infection								
Epidemic typhus								
Botulism					1		2	
Malaria		1	1		8	1	26	
Tularemia								
Lyme disease							2	
Lyssavirus infection(excluding rabies)								
Rift valley fever								
Melioidosis								
Legionellosis	3	1	1		60	31	736	
Leptospirosis							5	
Rocky mountain spotted fever								

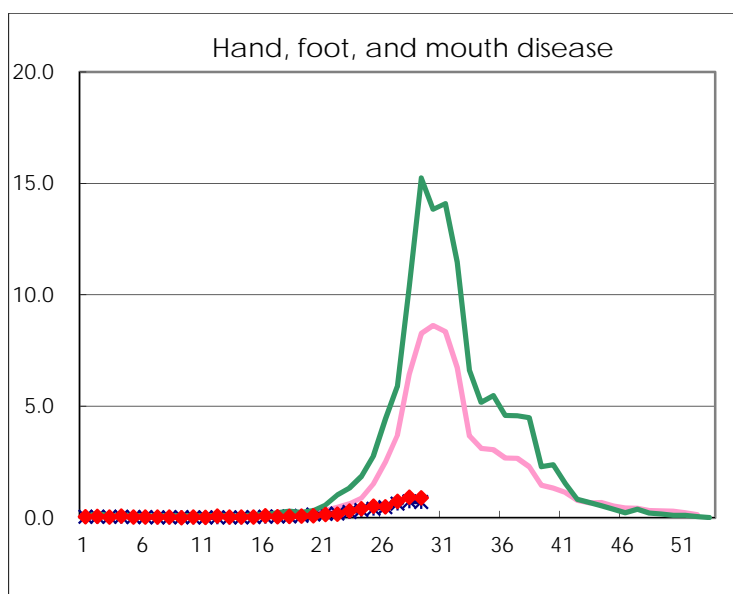
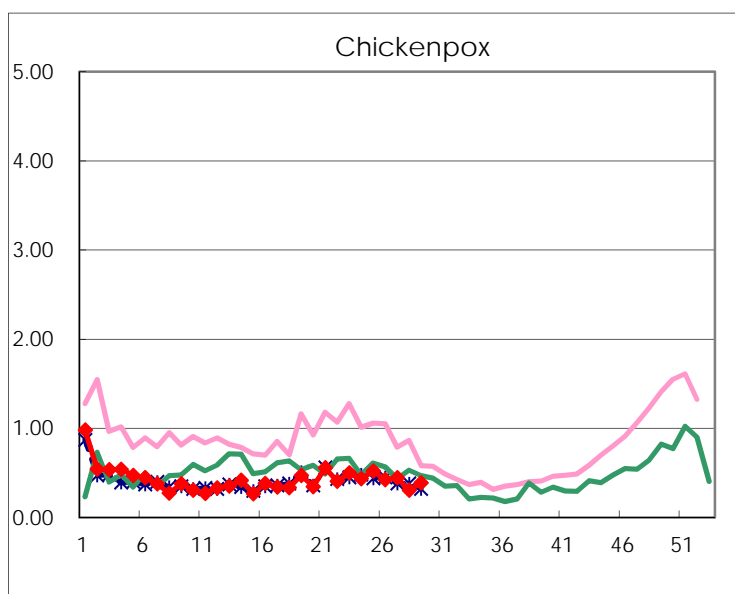
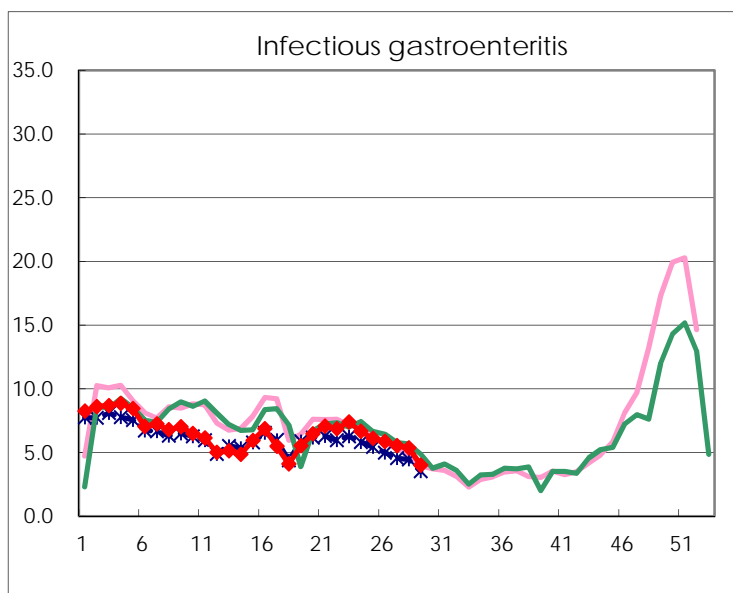
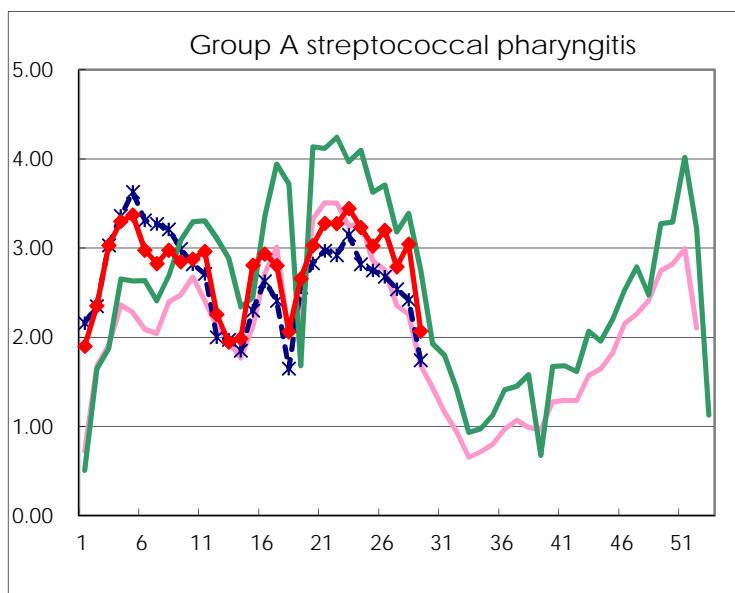
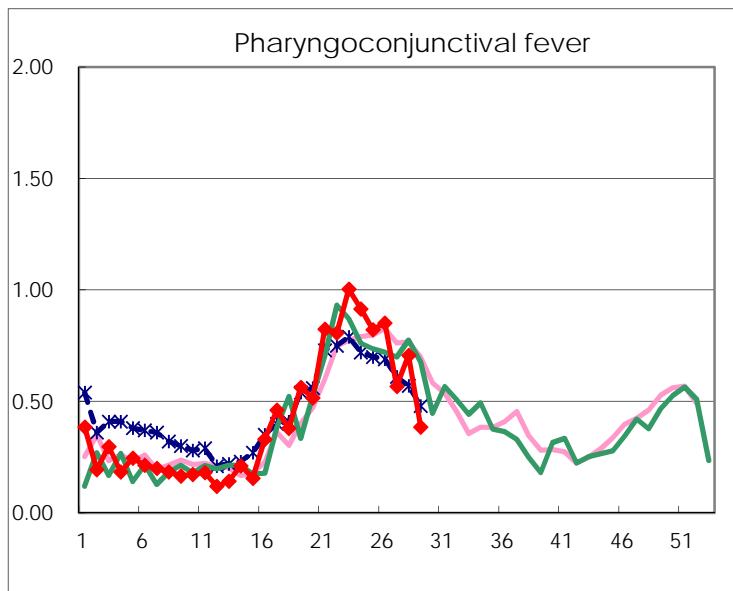
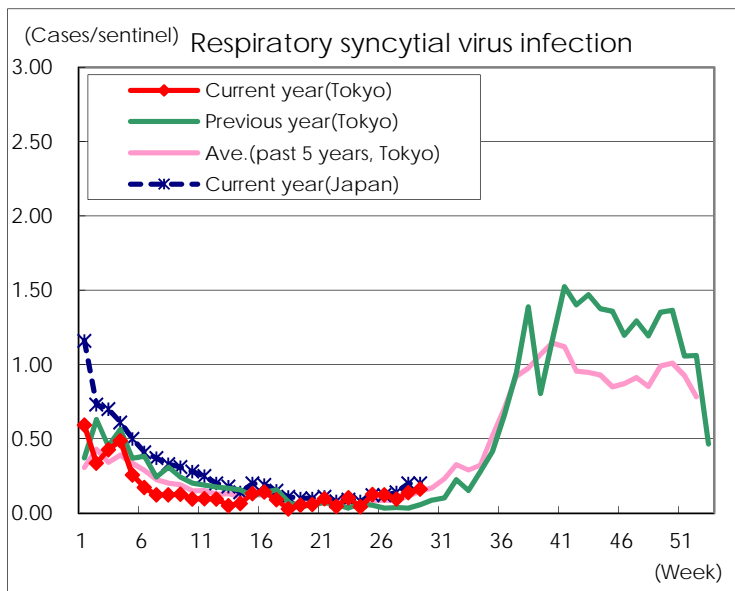
Category	Diseases	Tokyo					Japan	
		26th	27th	28th	29th	Cum 2016	29th	Cum 2016
V	Amebiasis	4	6	4	3	131	10	644
	Viral hepatitis(excluding hepatitis A and E)		2	3		37	3	145
	CRE infection	3	2	3	4	101	17	762
	Acute encephalitis(excluding JE and WNE)	1	1	3		63	4	490
	Cryptosporidiosis							6
	Creutzfeldt-Jakob disease	1				10	2	95
	Severe invasive streptococcal infections(TSLS)	2		1	2	39	8	298
	Acquired immunodeficiency syndrome (AIDS)	8	10	5	10	262	11	774
	Giardiasis		1	1		9	1	34
	Invasive <i>Haemophilus influenzae</i> disease	1		1	5	28	6	194
	Invasive meningococcal disease		1			3	1	27
	Invasive pneumococcal disease	1	5	5	2	222	16	1,657
	Varicella (limited to hospitalized case)	2	1		1	32	3	174
	Congenital rubella syndrome							
	Syphilis	38	36	28	32	925	51	2,287
	Disseminated cryptococcosis				1	10	1	71
	Tetanus					3		67
	Vancomycin-resistant <i>S. aureus</i> infection							
	Vancomycin-resistant Enterococcus infection						2	27
	Rubella		1			12	2	90
Measles					3	1	11	
MDRA infection					1	2	20	

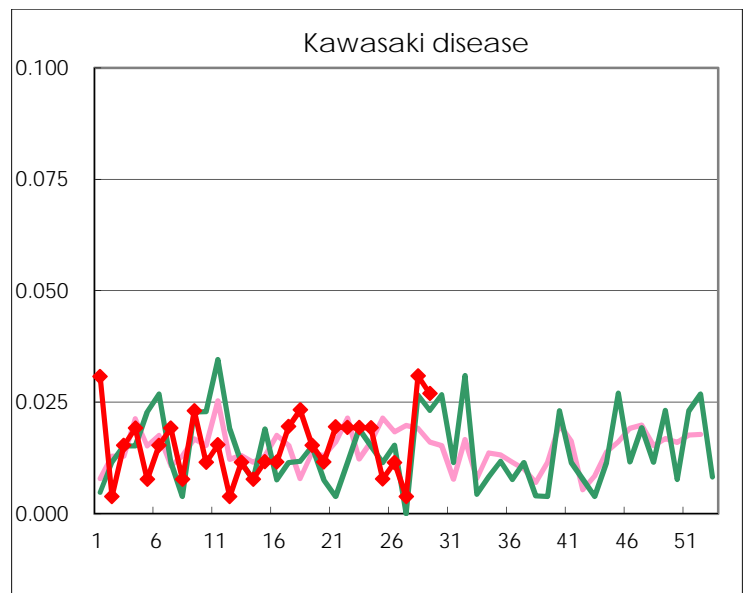
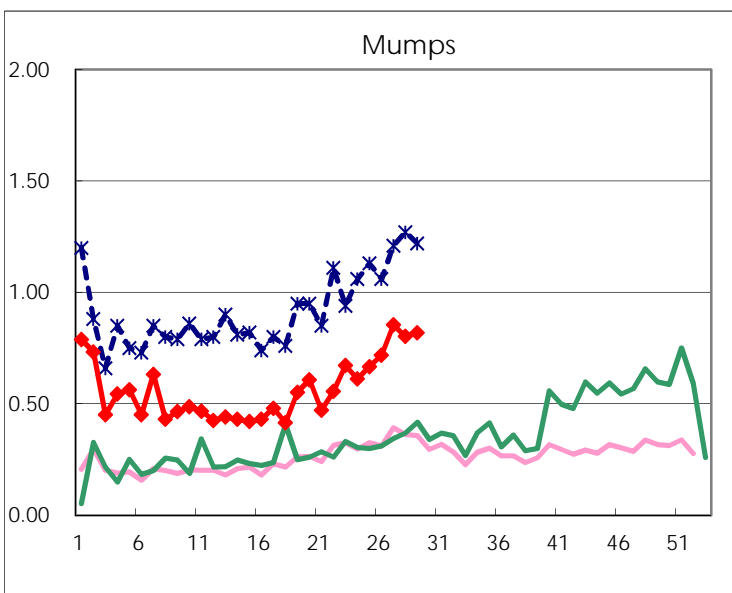
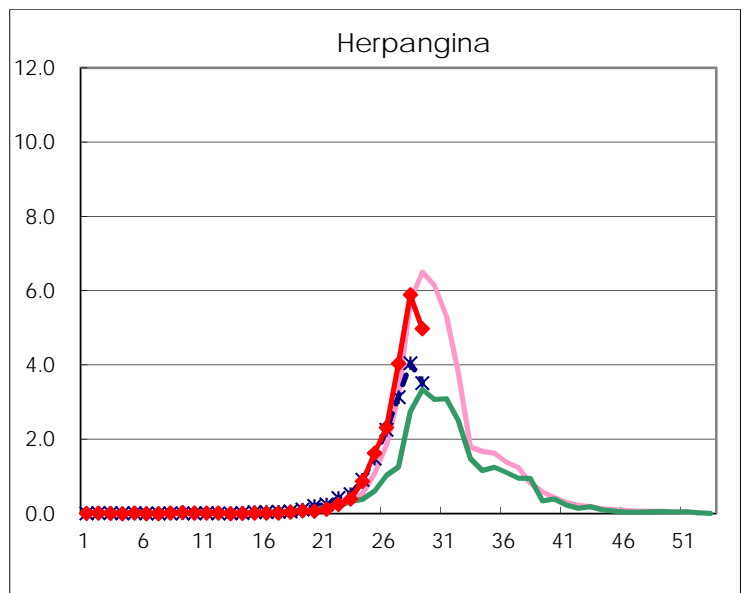
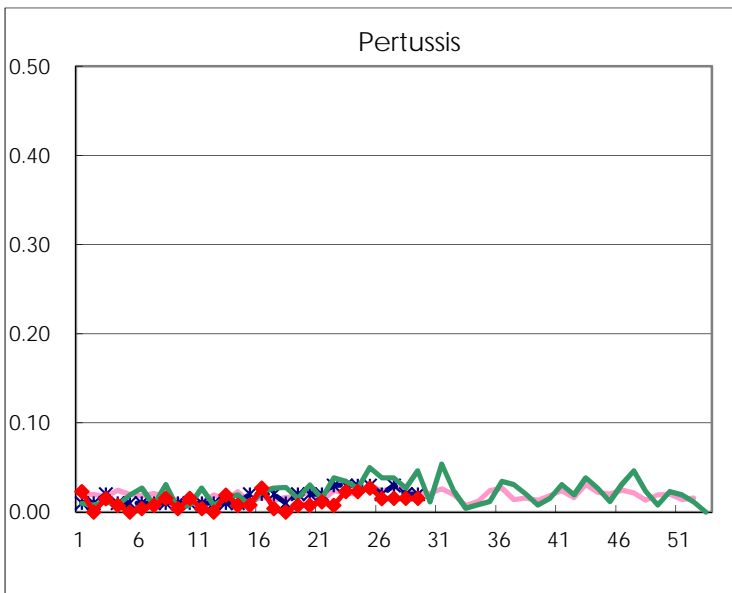
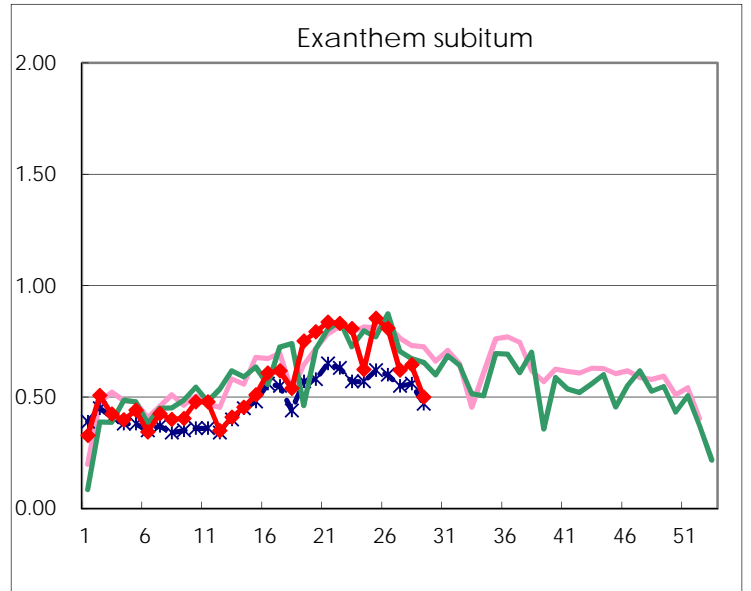
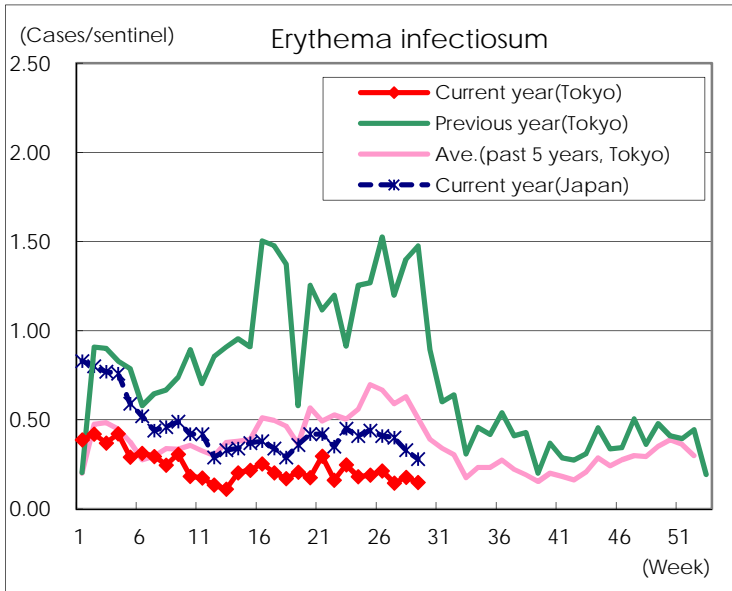
Number of patients with the diseases to be reported  
by the designated clinics and hospitals

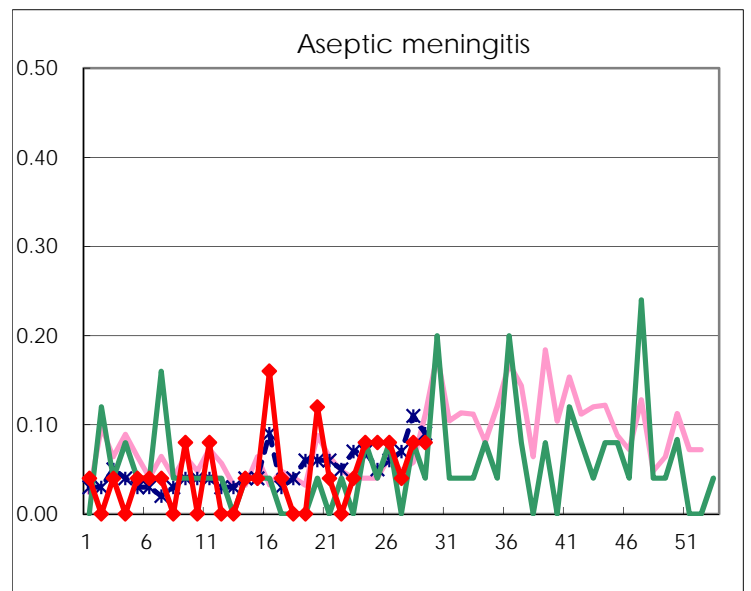
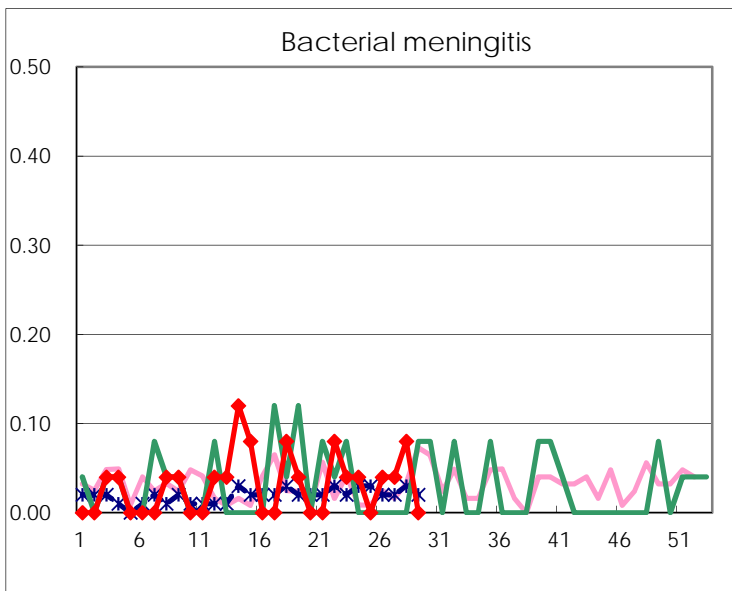
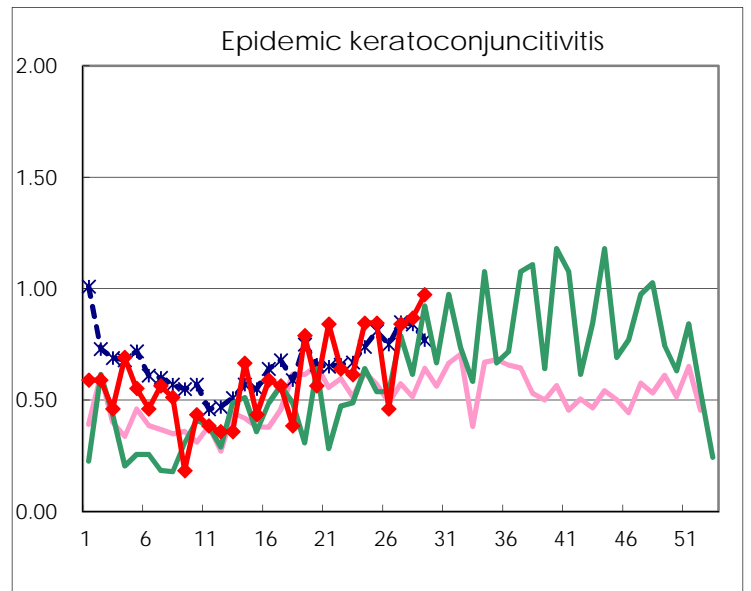
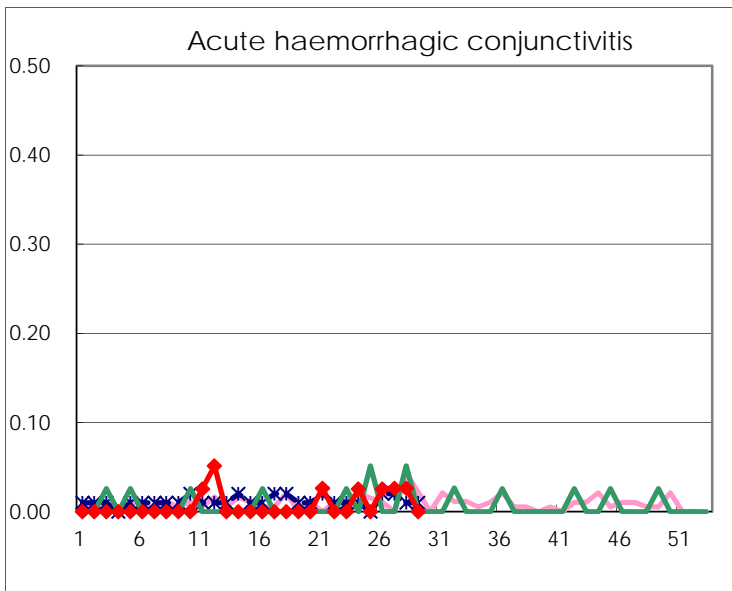
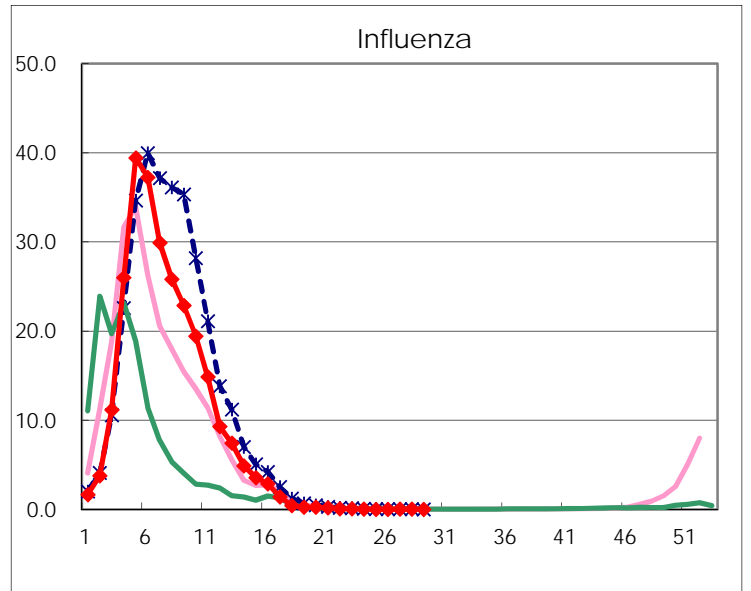
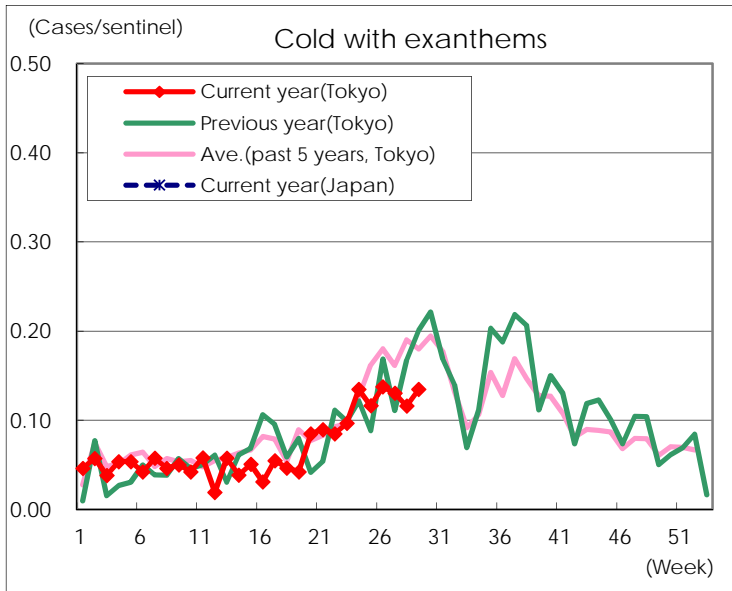
Diseases	Tokyo				
	26th	27th	28th	29th	/sentinel
Respiratory syncytial virus infection	32	25	36	42	0.16
Pharyngoconjunctival fever	223	148	183	100	0.38
Group A streptococcal pharyngitis	838	728	789	538	2.07
Infectious gastroenteritis	1,537	1,442	1,390	1,041	4.00
Chickenpox	111	116	79	101	0.39
Hand, foot, and mouth disease	130	191	238	230	0.88
Erythema infectiosum	56	38	46	39	0.15
Exanthem subitum	212	162	167	130	0.50
Pertussis	4	4	4	4	0.02
Herpangina	608	1,055	1,526	1,295	4.98
Mumps	188	223	208	213	0.82
Kawasaki disease	3	1	8	7	0.03
Cold with exanthems	36	34	30	35	0.13
Influenza	7	9	9	4	0.01
Acute hemorrhagic conjunctivitis	1	1	1		
Epidemic keratoconjunctivitis	18	32	33	37	0.97
Bacterial meningitis	1	1	2		
Aseptic meningitis	2	1	2	2	0.08
Mycoplasma pneumonia	14	14	26	16	0.64
Chlamydial pneumonia (excluding psittacosis)	2	1			
Infectious gastroenteritis (only by Rotavirus)		1			
Influenza-Associated Hospitalizations			1		

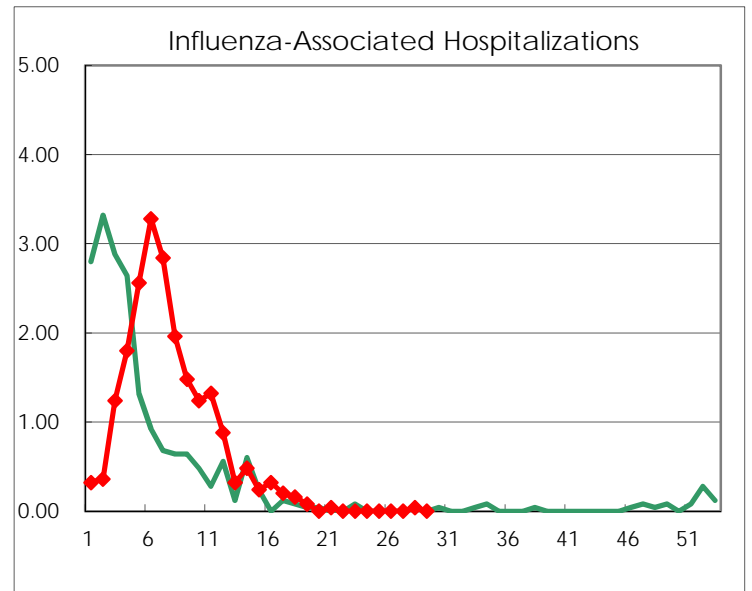
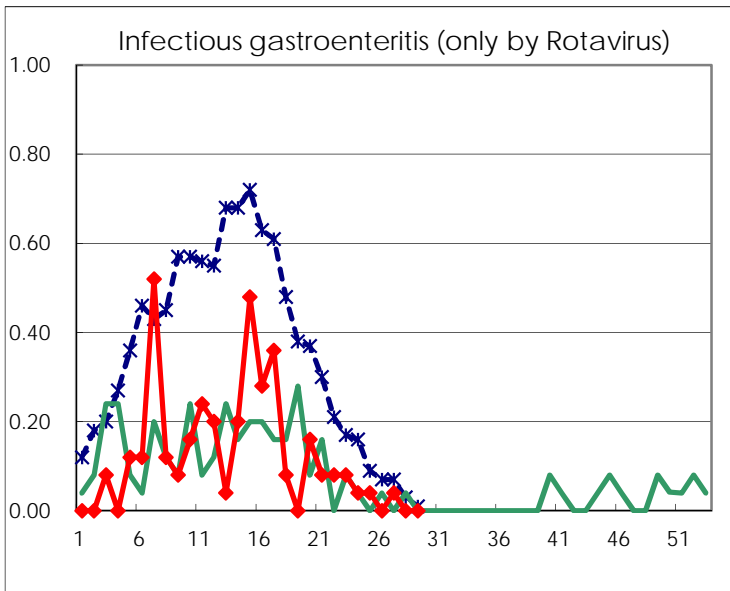
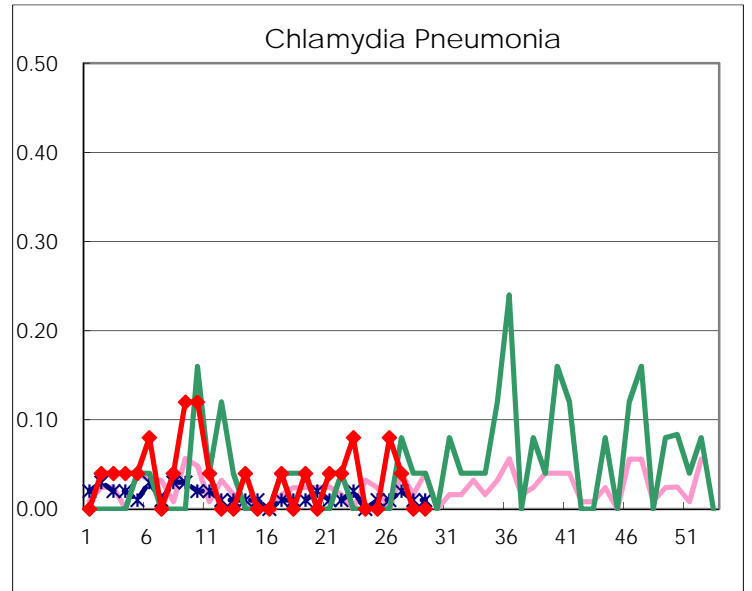
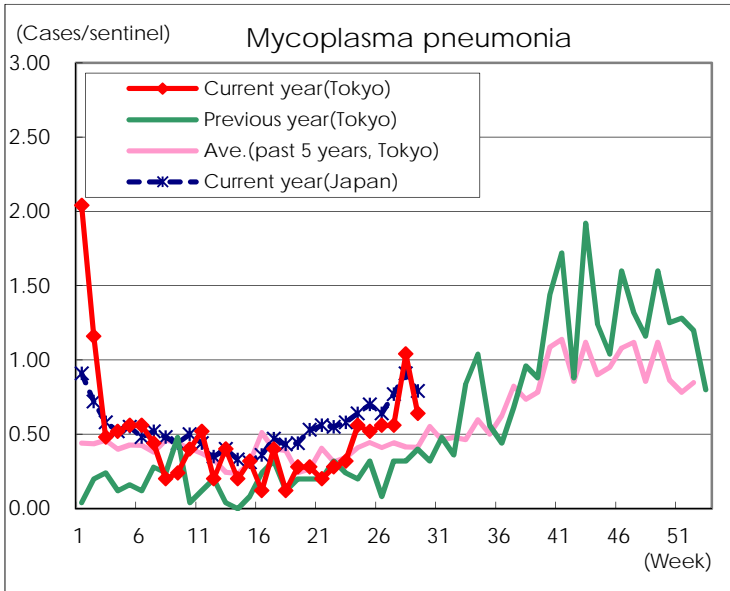
( Blank means 0. )

# Disease Trend Graph (weekly reported cases per sentinel in comparison)









Number of sentinel facilities for weekly reporting		
Types of sentinels	Number of sentinels	Sentinels having reported
Pediatric	264	260
Influenza	419	411
Ophthalmic	39	38
Specially-designated	25	25