

4 August 2016 / Number 30

Surveillance System in Tokyo, Japan

The infectious diseases which all physicians must report

All physicians must report to health centers the incidence of the diseases which are shown at page one. Health centers electronically report the individual cases to Tokyo Metropolitan Infectious Disease Surveillance Center.

The infectious diseases required to be reported by the sentinels

The numbers of patients who visit the sentinel clinics or hospitals during a week are reported to health centers in Tokyo. And they electronically report the numbers to Tokyo Metropolitan Infectious Disease Surveillance Center. We have about 500 sentinel clinics and hospitals in Tokyo.

Tokyo Metropolitan Institute of Public Health

TEL:81-3-3363-3213 FAX:81-3-5332-7365

e-mail:www@tokyo-eiken.go.jp

URL:idsc.tokyo-eiken.go.jp/

Number of patients with the diseases which all physicians must report

Category	Diseases	Tokyo					Japan	
		27th	28th	29th	30th	Cum 2016	30th	Cum 2016
I	Ebola hemorrhagic fever							
	Crimean-Congo hemorrhagic fever							
	Smallpox							
	South American hemorrhagic fever							
	Plague							
	Marburg disease							
	Lassa fever							
II	Acute poliomyelitis							
	Tuberculosis	64	95	61	67	2,130	376	13,670
	Diphtheria							
	Severe Acute Respiratory Syndrome(SARS)							
	Middle East Respiratory Syndrome (MERS)							
	Avian influenza H5N1							
	Avian influenza H7N9							
III	Cholera							3
	Shigellosis			1		22	2	73
	Enterohemorrhagic Escherichia coli infection	14	15	14	14	184	123	1,299
	Typhoid fever	2				14		29
	Paratyphoid fever					5		9
IV	Hepatitis E	1	1			28	2	247
	West Nile fever							
	Hepatitis A	1	2			49	2	196
	Echinococcosis							12
	Yellow fever							
	Psittacosis	1				1		4
	Omsk hemorrhagic fever							
	Relapsing fever							4
	Kyasanur forest disease							
	Q fever							
	Rabies							
	Coccidioidomycosis					2		2
	Monkeypox							
	Zika virus infection							7
	Severe Fever with Thrombocytopenia Syndrome						3	36
	Hemorrhagic fever with renal syndrome							
	Western equine encephalitis							
	Tick-borne encephalitis							
	Anthrax							
	Chikungunya fever					3	1	4
	Scrub typhus(Tsutsugamushi disease)						1	86
	Dengue fever	2	4	1	2	50	6	188
	Eastern equine encephalitis							
	Avian influenza (excluding H5N1 and H7N9)							
	Nipah virus infection							
	Japanese spotted fever						3	99
	Japanese encephalitis							
	Hantavirus pulmonary syndrome							
	Herpes B virus infection							
	Glanders							
	Brucellosis							
	Venezuelan equine encephalitis							
Hendra virus infection								
Epidemic typhus								
Botulism					1		2	
Malaria	1	1		3	11	2	30	
Tularemia								
Lyme disease						1	3	
Lyssavirus infection(excluding rabies)								
Rift valley fever								
Melioidosis								
Legionellosis	1	1		7	67	41	787	
Leptospirosis						1	7	
Rocky mountain spotted fever								

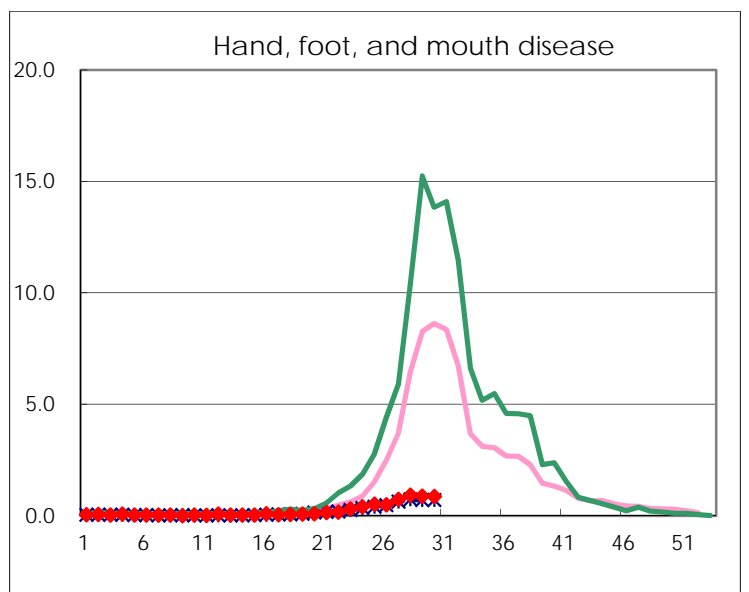
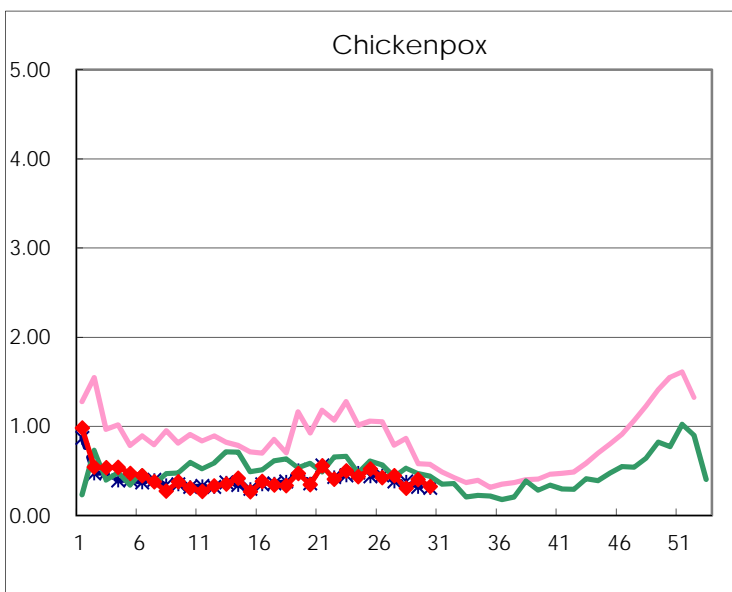
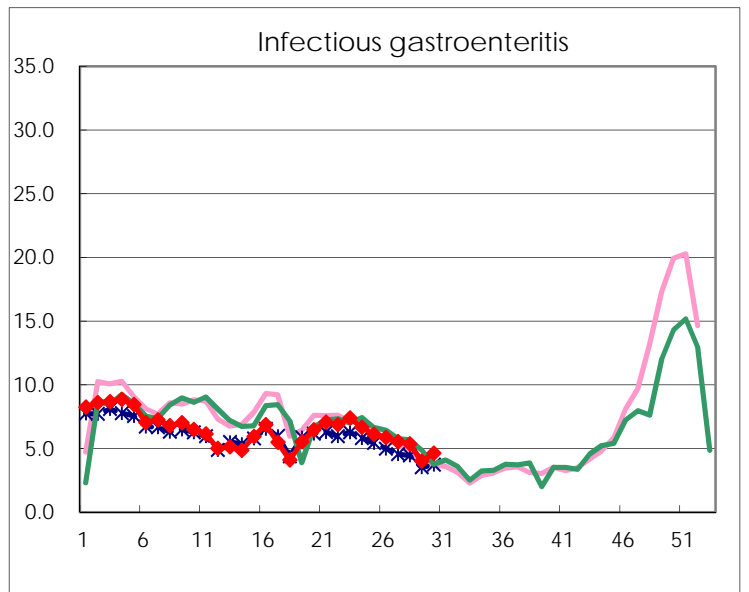
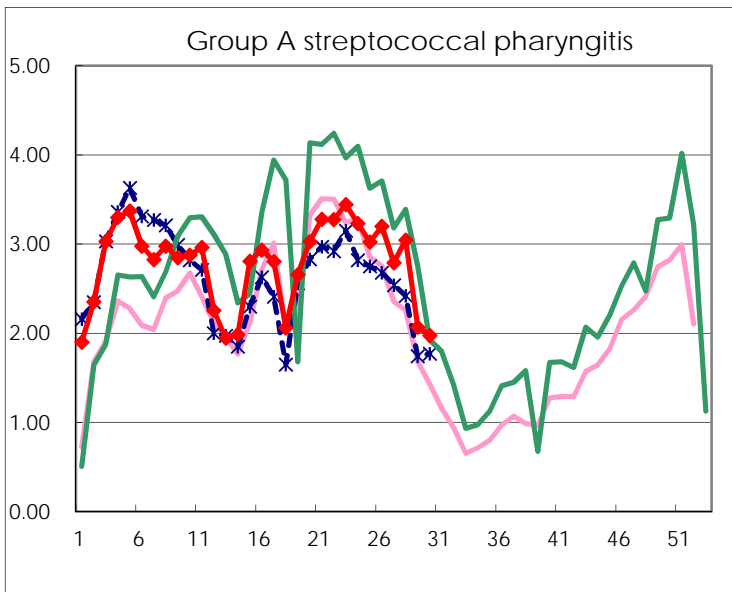
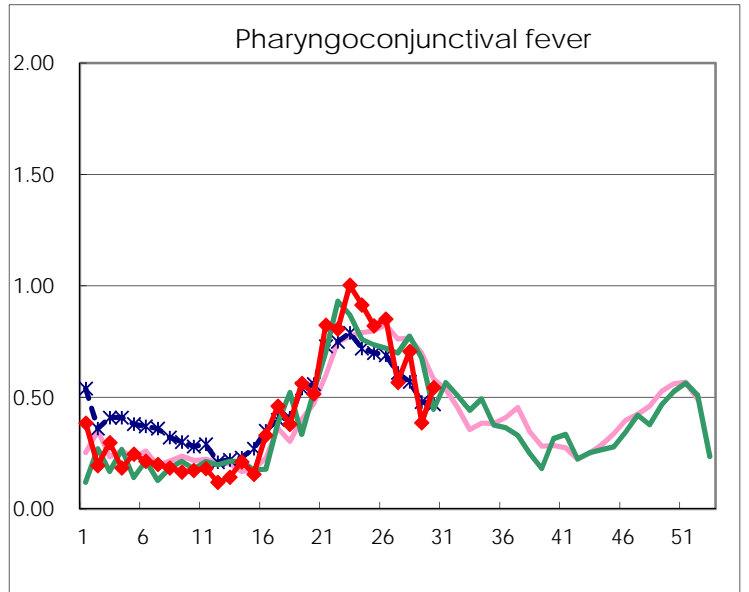
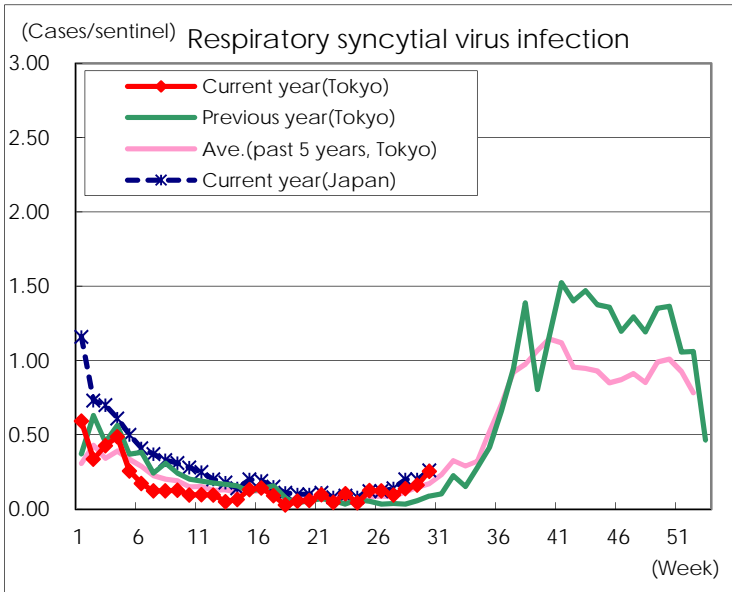
Category	Diseases	Tokyo					Japan	
		27th	28th	29th	30th	Cum 2016	30th	Cum 2016
V	Amebiasis	6	4	3	3	134	13	664
	Viral hepatitis(excluding hepatitis A and E)	2	3		2	39	3	149
	CRE infection	2	3	4	1	102	11	791
	Acute encephalitis(excluding JE and WNE)	1	3		3	66	7	503
	Cryptosporidiosis							6
	Creutzfeldt-Jakob disease				1	11	2	97
	Severe invasive streptococcal infections(TSLS)		1	2	1	40	10	312
	Acquired immunodeficiency syndrome (AIDS)	10	5	10	9	271	19	804
	Giardiasis	1	1		1	10	1	38
	Invasive <i>Haemophilus influenzae</i> disease		1	5	2	30	3	200
	Invasive meningococcal disease	1				3	1	28
	Invasive pneumococcal disease	5	5	2	7	229	18	1,695
	Varicella (limited to hospitalized case)	1		1	1	33	2	178
	Congenital rubella syndrome							
	Syphilis	36	28	33	40	966	67	2,410
	Disseminated cryptococcosis			1		10	2	73
	Tetanus					3	2	69
	Vancomycin-resistant <i>S. aureus</i> infection							
	Vancomycin-resistant Enterococcus infection						1	29
	Rubella	1				12		92
Measles	1				4	3	16	
MDRA infection					1	1	21	

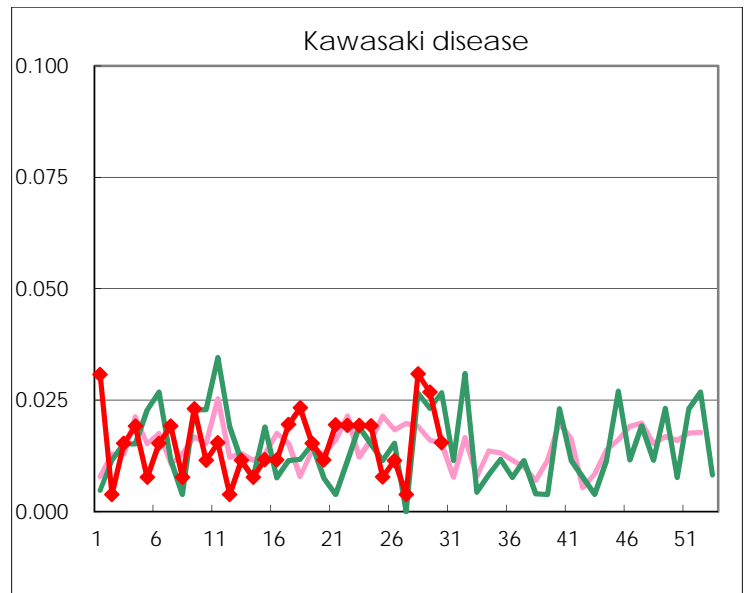
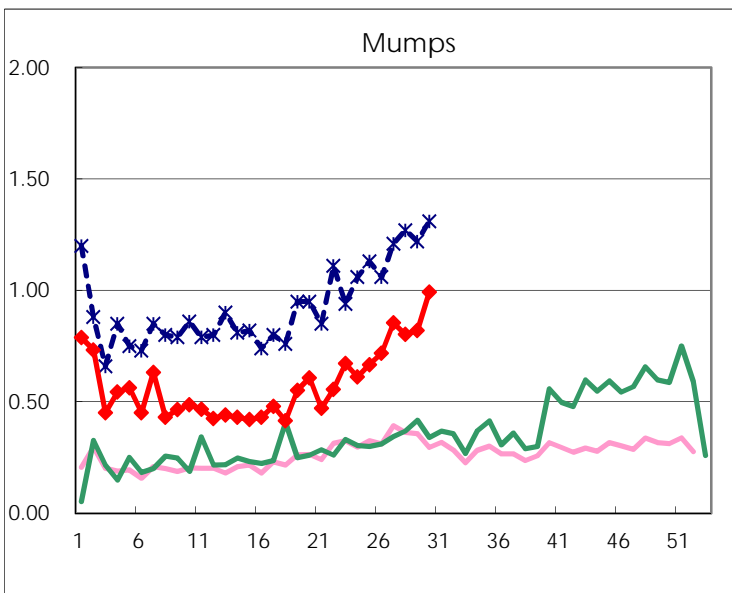
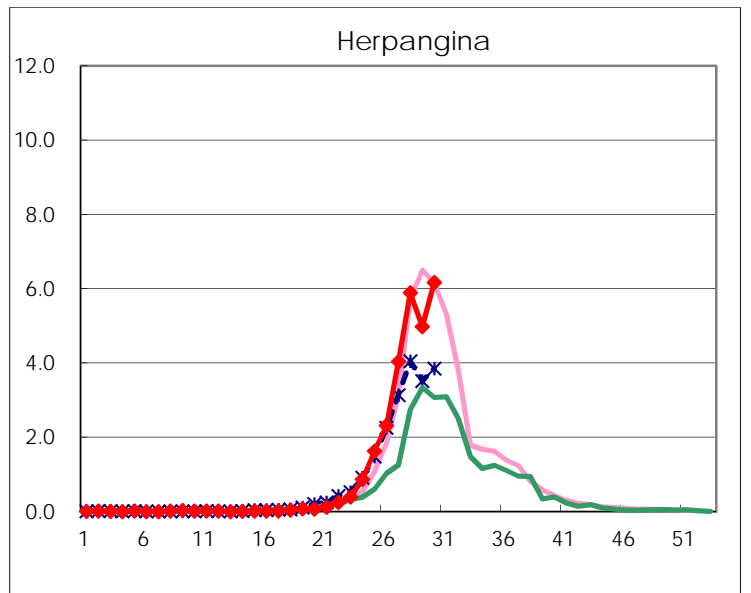
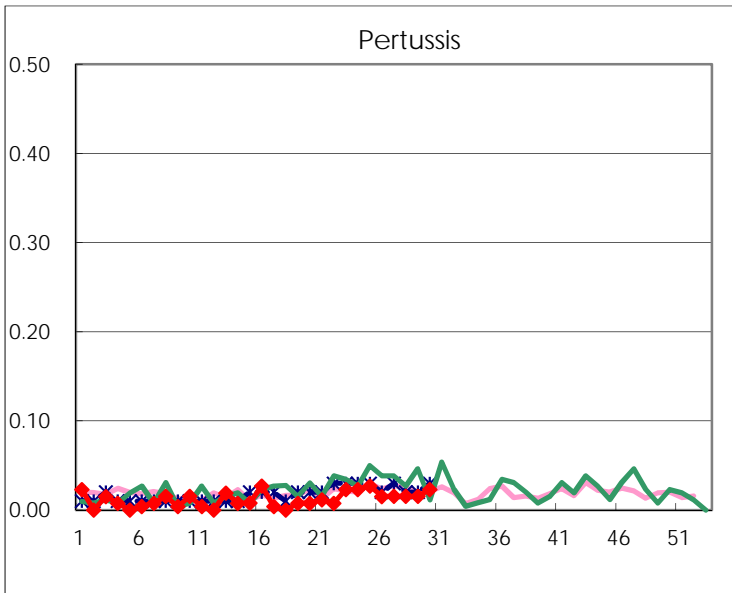
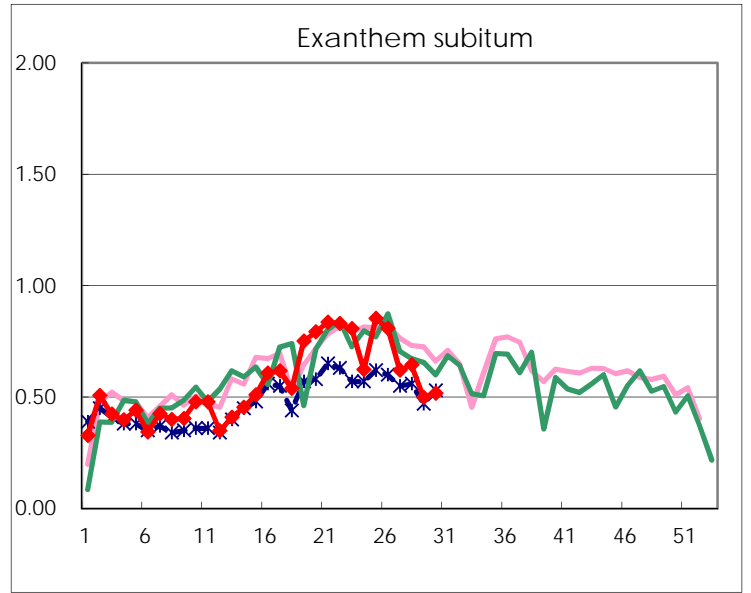
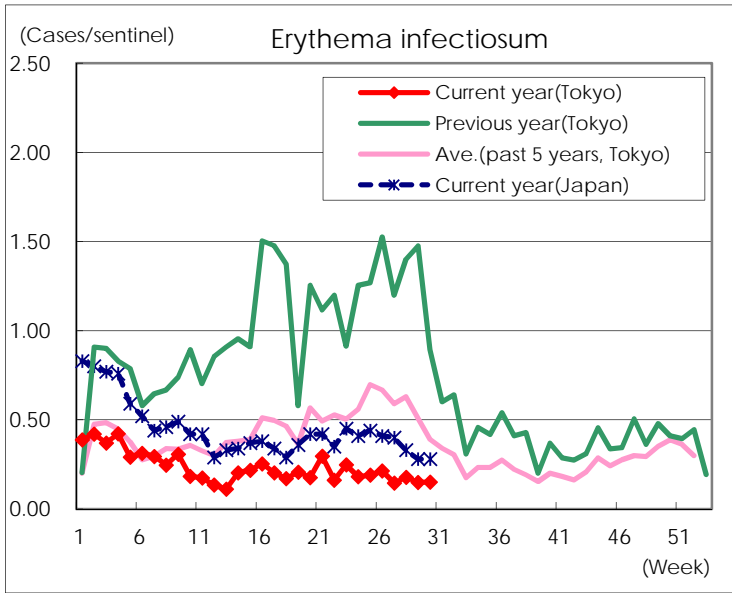
Number of patients with the diseases to be reported
by the designated clinics and hospitals

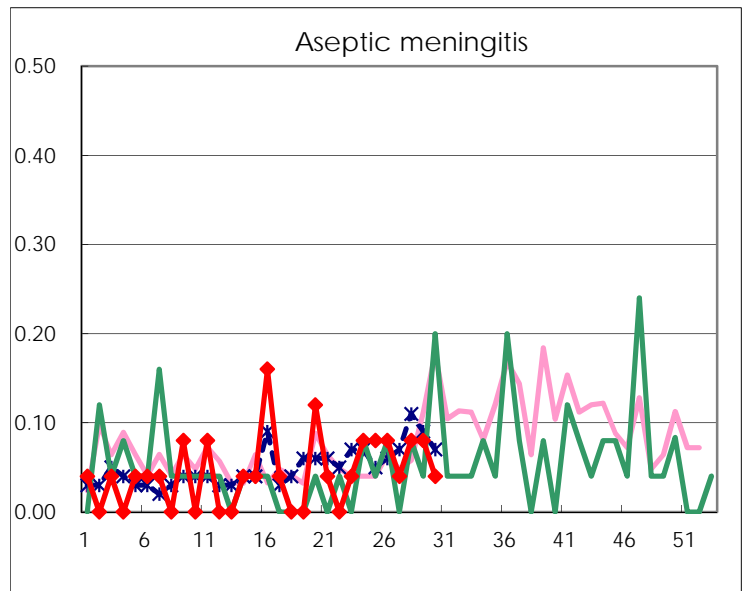
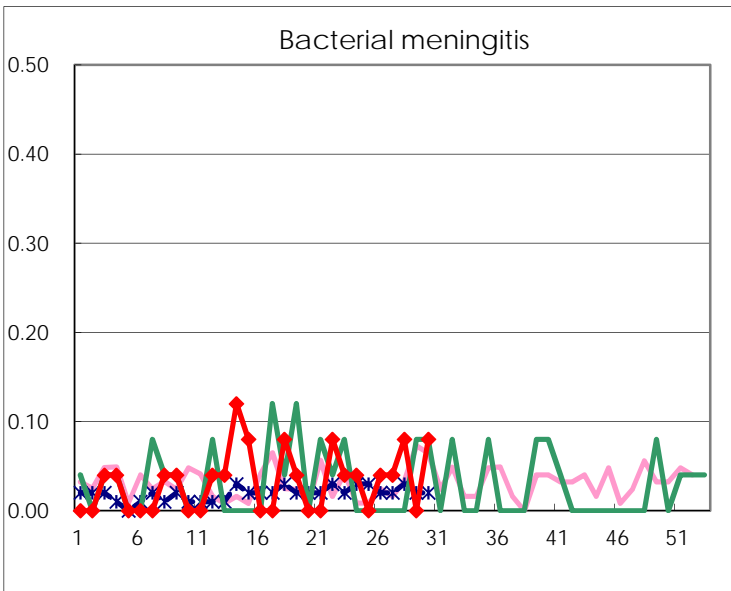
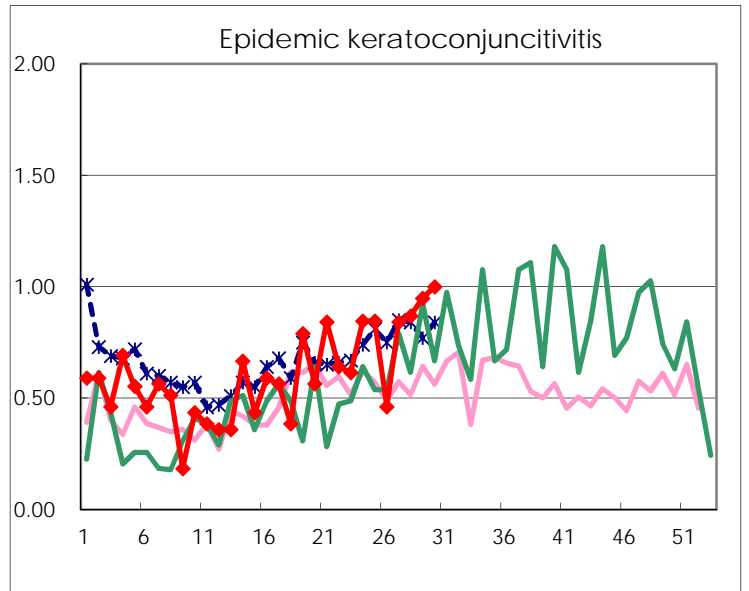
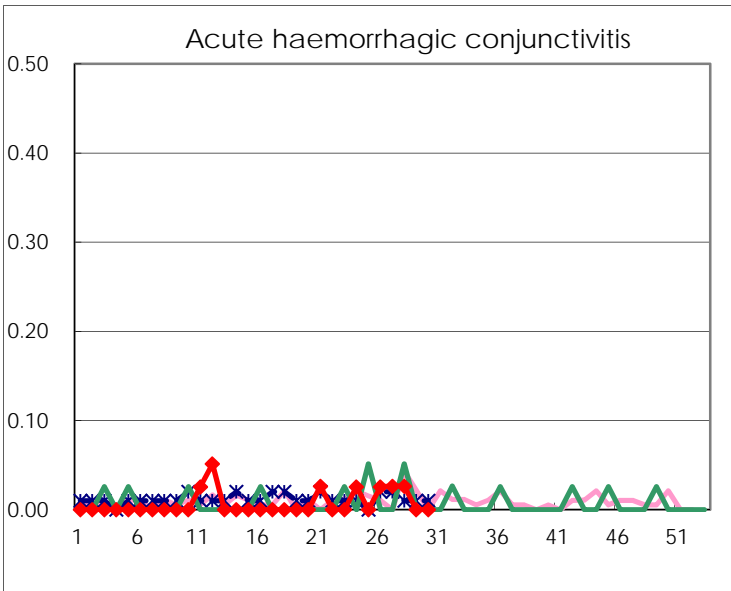
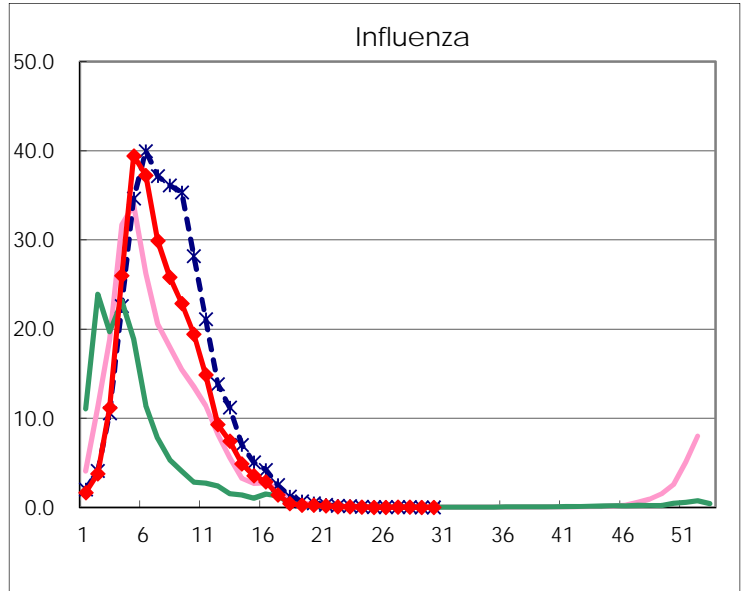
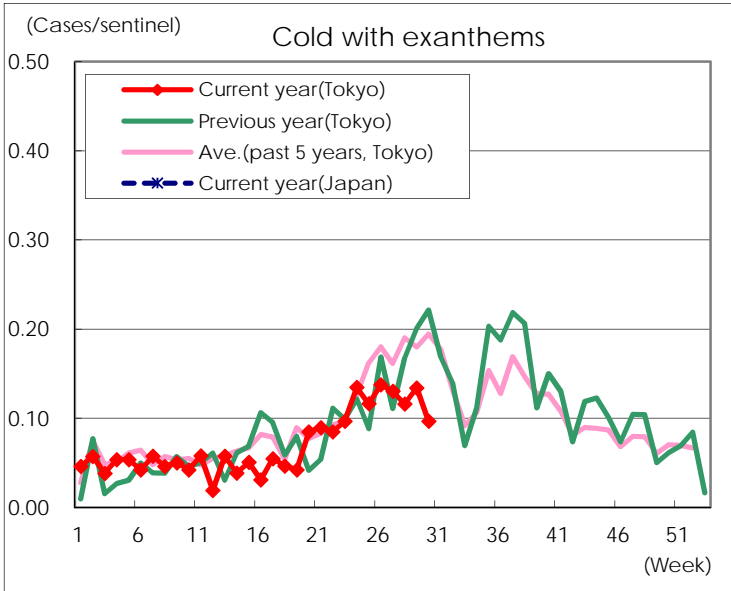
Diseases	Tokyo				
	27th	28th	29th	30th	/sentinel
Respiratory syncytial virus infection	25	36	42	66	0.25
Pharyngoconjunctival fever	148	183	101	141	0.54
Group A streptococcal pharyngitis	728	789	540	512	1.98
Infectious gastroenteritis	1,442	1,390	1,042	1,196	4.62
Chickenpox	116	79	105	84	0.32
Hand, foot, and mouth disease	191	238	230	225	0.87
Erythema infectiosum	38	46	39	39	0.15
Exanthem subitum	162	167	130	134	0.52
Pertussis	4	4	4	6	0.02
Herpangina	1,055	1,526	1,301	1,599	6.17
Mumps	223	208	214	257	0.99
Kawasaki disease	1	8	7	4	0.02
Cold with exanthems	34	30	35	25	0.10
Influenza	9	9	4	5	0.01
Acute hemorrhagic conjunctivitis	1	1			
Epidemic keratoconjunctivitis	32	33	37	39	1.00
Bacterial meningitis	1	2		2	0.08
Aseptic meningitis	1	2	2	1	0.04
Mycoplasma pneumonia	14	26	16	21	0.84
Chlamydial pneumonia (excluding psittacosis)	1			2	0.08
Infectious gastroenteritis (only by Rotavirus)	1				
Influenza-Associated Hospitalizations		1			

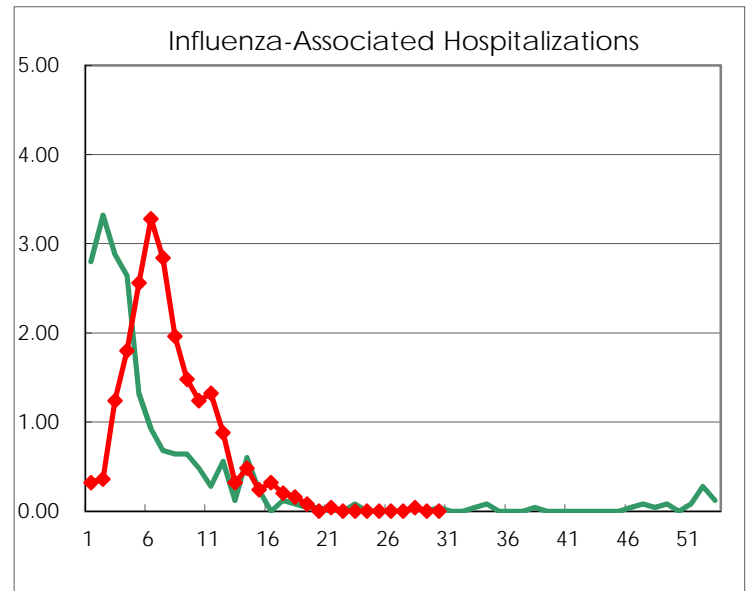
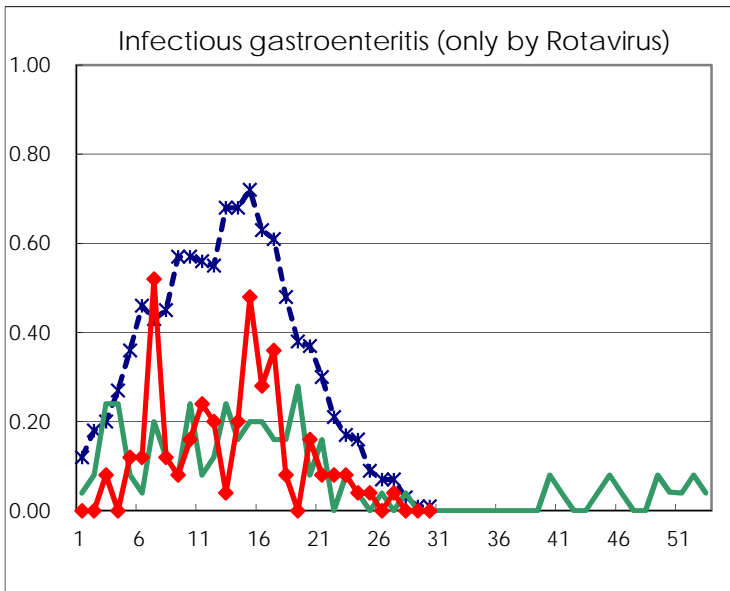
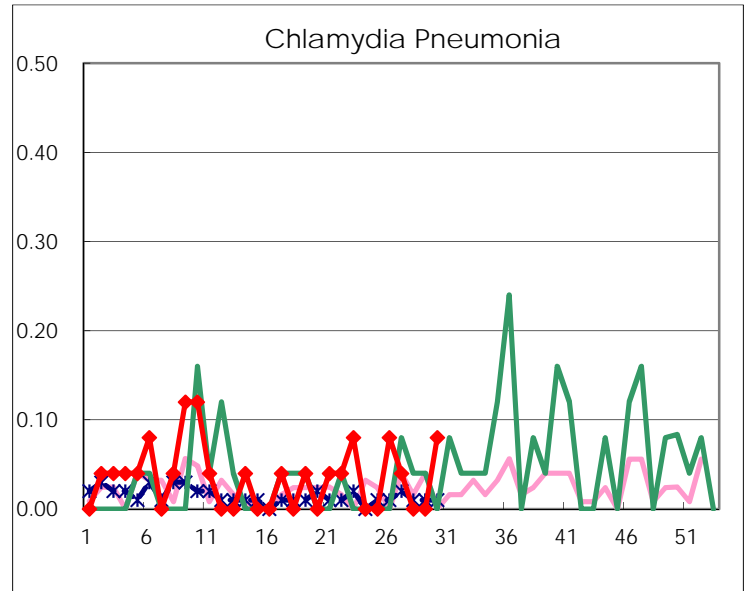
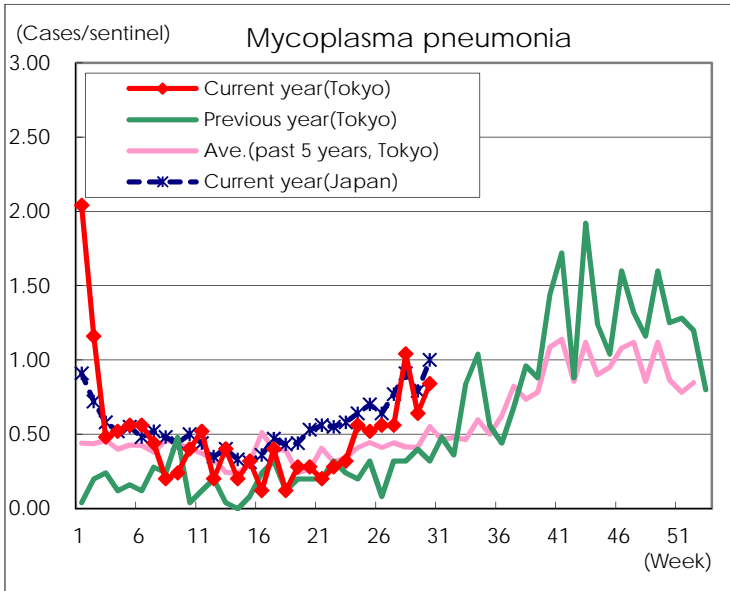
(Blank means 0.)

Disease Trend Graph (weekly reported cases per sentinel in comparison)









Number of sentinel facilities for weekly reporting		
Types of sentinels	Number of sentinels	Sentinels having reported
Pediatric	264	259
Influenza	419	412
Ophthalmic	39	39
Specially-designated	25	25