

12 August 2016 / Number 31

Surveillance System in Tokyo, Japan

The infectious diseases which all physicians must report

All physicians must report to health centers the incidence of the diseases which are shown at page one. Health centers electronically report the individual cases to Tokyo Metropolitan Infectious Disease Surveillance Center.

The infectious diseases required to be reported by the sentinels

The numbers of patients who visit the sentinel clinics or hospitals during a week are reported to health centers in Tokyo. And they electronically report the numbers to Tokyo Metropolitan Infectious Disease Surveillance Center. We have about 500 sentinel clinics and hospitals in Tokyo.

Tokyo Metropolitan Institute of Public Health

TEL:81-3-3363-3213 FAX:81-3-5332-7365

e-mail:www@tokyo-eiken.go.jp

URL:idsc.tokyo-eiken.go.jp/

Number of patients with the diseases which all physicians must report

Category	Diseases	Tokyo					Japan	
		28th	29th	30th	31st	Cum 2016	31st	Cum 2016
I	Ebola hemorrhagic fever							
	Crimean-Congo hemorrhagic fever							
	Smallpox							
	South American hemorrhagic fever							
	Plague							
	Marburg disease							
II	Lassa fever							
	Acute poliomyelitis							
	Tuberculosis	98	63	80	52	2,201	355	14,194
	Diphtheria							
	Severe Acute Respiratory Syndrome(SARS)							
	Middle East Respiratory Syndrome (MERS)							
III	Avian influenza H5N1							
	Avian influenza H7N9							
	Cholera							3
	Shigellosis		1		1	23	4	77
	Enterohemorrhagic Escherichia coli infection	15	14	15	11	197	145	1,467
IV	Typhoid fever				1	15	1	30
	Paratyphoid fever					5		9
	Hepatitis E	1				28	4	252
	West Nile fever							
	Hepatitis A	2			3	52	6	202
	Echinococcosis							12
	Yellow fever							
	Psittacosis					1		4
	Omsk hemorrhagic fever							
	Relapsing fever						1	5
	Kyasanur forest disease							
	Q fever							
	Rabies							
	Coccidioidomycosis					2		2
	Monkeypox							
	Zika virus infection							7
	Severe Fever with Thrombocytopenia Syndrome						2	38
	Hemorrhagic fever with renal syndrome							
	Western equine encephalitis							
	Tick-borne encephalitis							
	Anthrax							
	Chikungunya fever					3	1	5
	Scrub typhus(Tsutsugamushi disease)						2	88
	Dengue fever	4	1	3		51	7	196
	Eastern equine encephalitis							
	Avian influenza (excluding H5N1 and H7N9)							
	Nipah virus infection							
	Japanese spotted fever						2	104
	Japanese encephalitis							
	Hantavirus pulmonary syndrome							
Herpes B virus infection								
Glanders								
Brucellosis				1	1	1	1	
Venezuelan equine encephalitis								
Hendra virus infection								
Epidemic typhus								
Botulism					1		2	
Malaria	1		3		11	1	31	
Tularemia								
Lyme disease						1	4	
Lyssavirus infection(excluding rabies)								
Rift valley fever								
Melioidosis								
Legionellosis	1		7	2	69	24	814	
Leptospirosis				1	1	1	8	
Rocky mountain spotted fever								

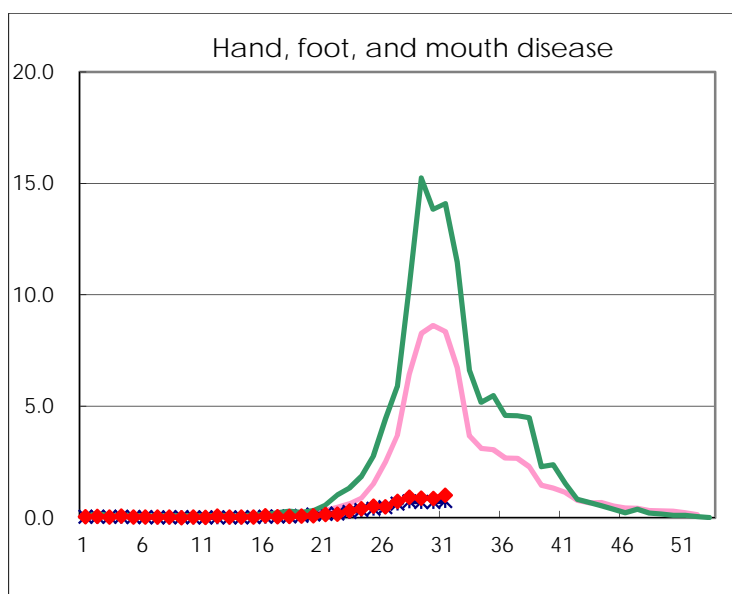
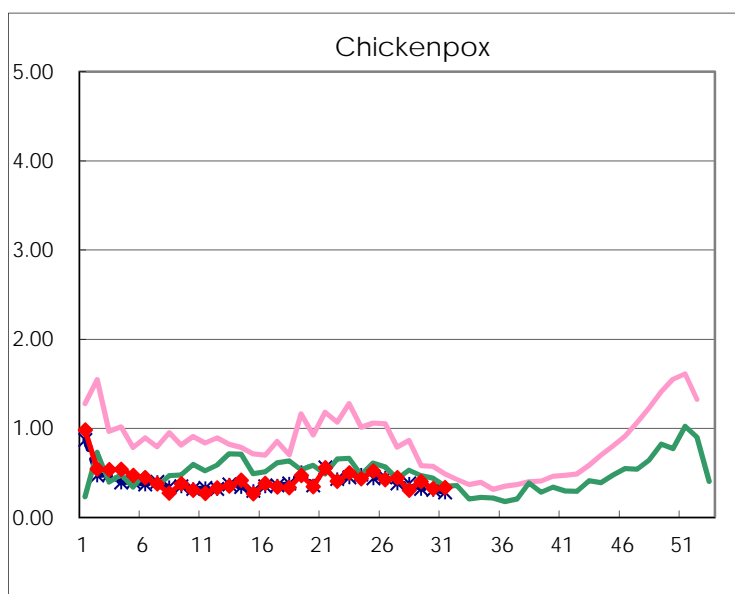
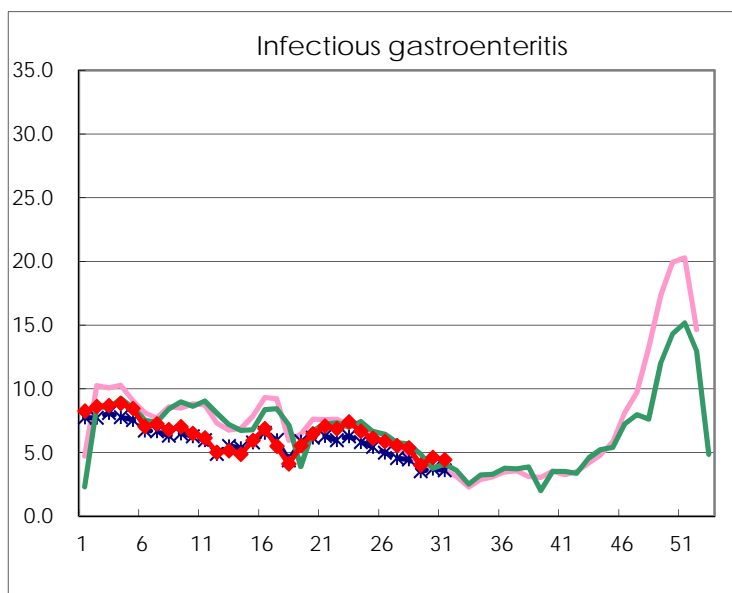
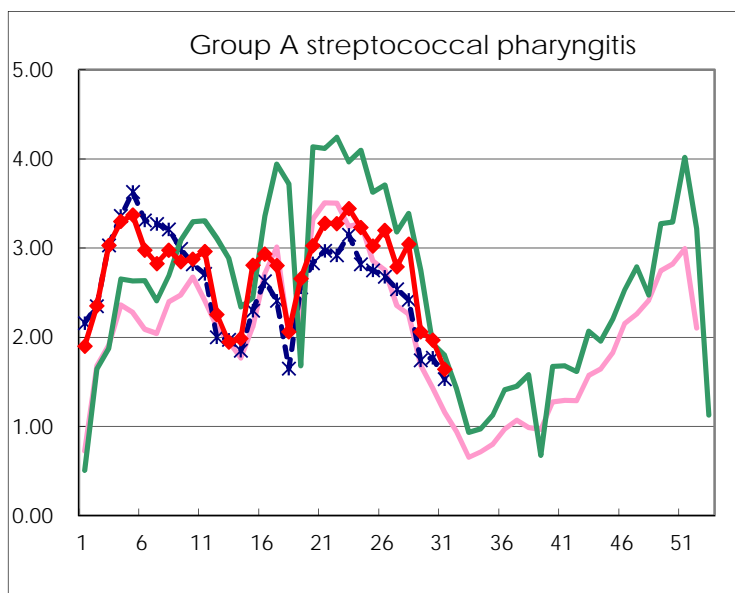
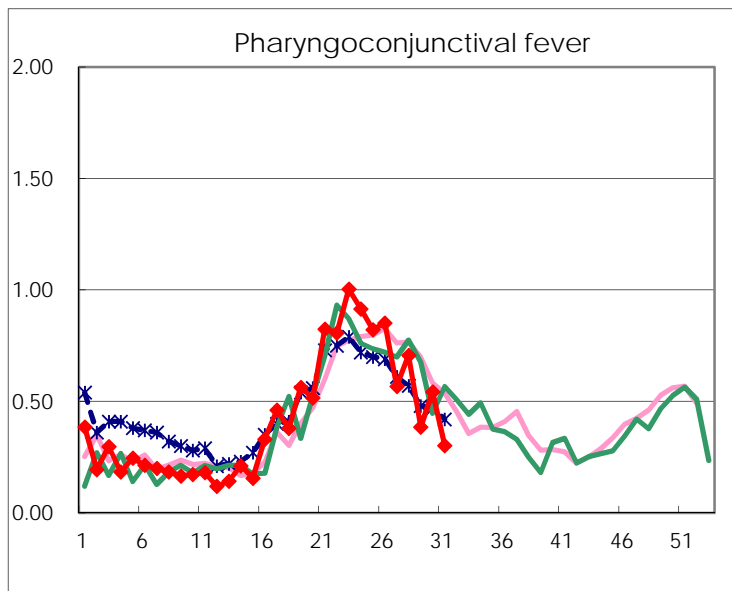
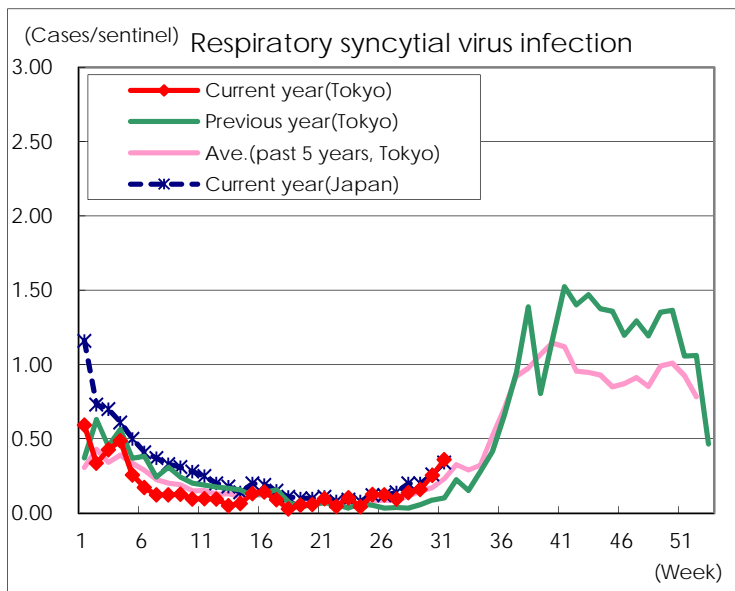
Category	Diseases	Tokyo				Japan		
		28th	29th	30th	31st	Cum 2016	31st	Cum 2016
V	Amebiasis	4	3	3	4	138	16	688
	Viral hepatitis(excluding hepatitis A and E)	3		2	3	42	2	153
	CRE infection	2	4	1	5	106	21	822
	Acute encephalitis(excluding JE and WNE)	3		3	1	67	6	516
	Cryptosporidiosis							6
	Creutzfeldt-Jakob disease			1		11	2	101
	Severe invasive streptococcal infections(TSLS)	1	2	1	2	42	3	317
	Acquired immunodeficiency syndrome (AIDS)	5	10	10	13	285	20	842
	Giardiasis	1		1	1	11	1	40
	Invasive <i>Haemophilus influenzae</i> disease	1	5	2	1	31	1	205
	Invasive meningococcal disease					3		28
	Invasive pneumococcal disease	5	2	7	6	235	27	1,735
	Varicella (limited to hospitalized case)		1	1	1	34	1	182
	Congenital rubella syndrome							
	Syphilis	28	33	41	39	1,006	60	2,509
	Disseminated cryptococcosis		1			10	1	75
	Tetanus					3	1	70
	Vancomycin-resistant <i>S. aureus</i> infection							
	Vancomycin-resistant Enterococcus infection							30
	Rubella					12		91
Measles					4	1	17	
MDRA infection					1		23	

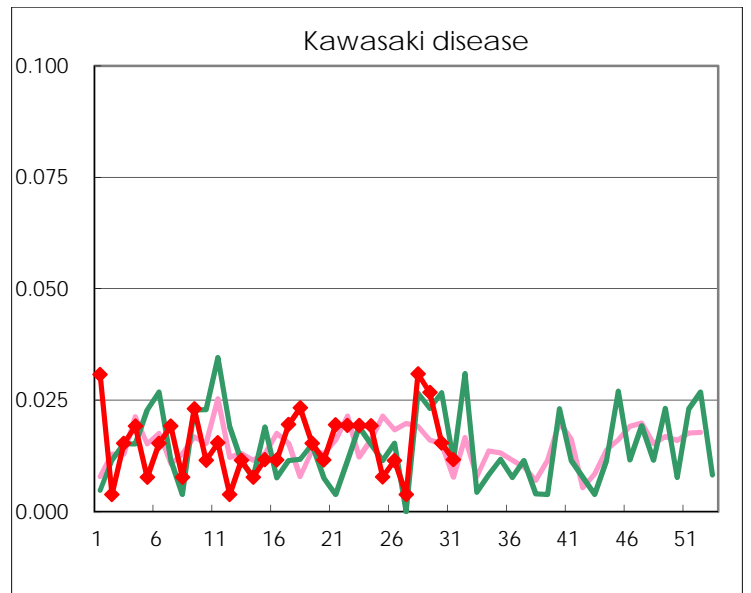
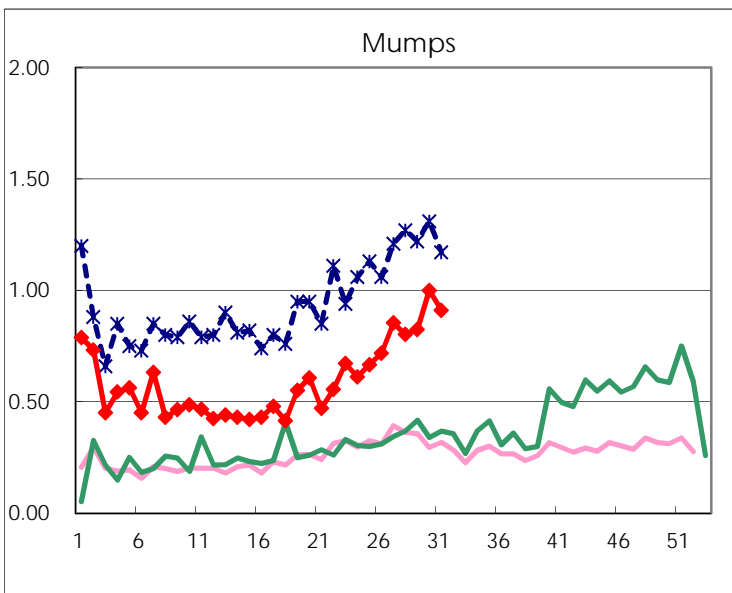
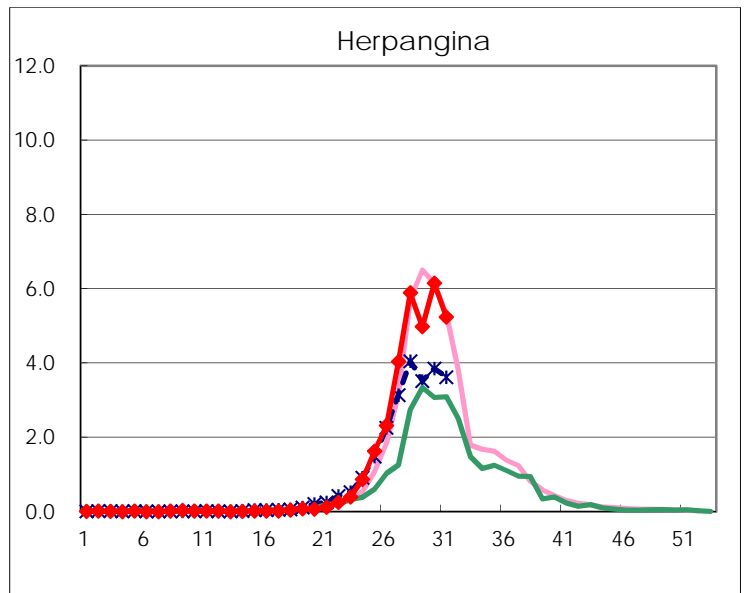
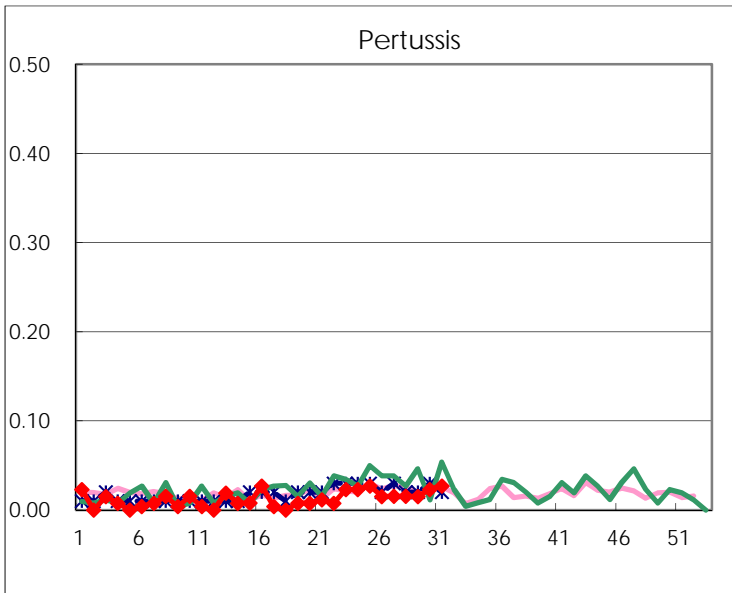
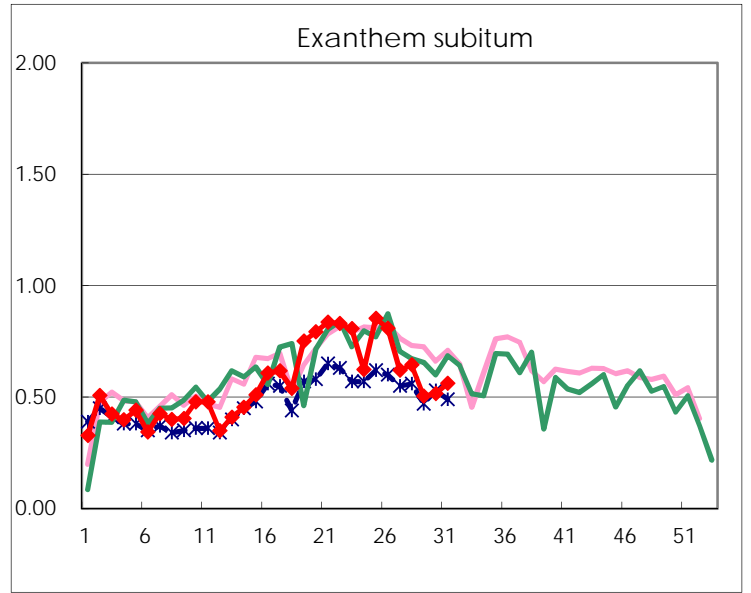
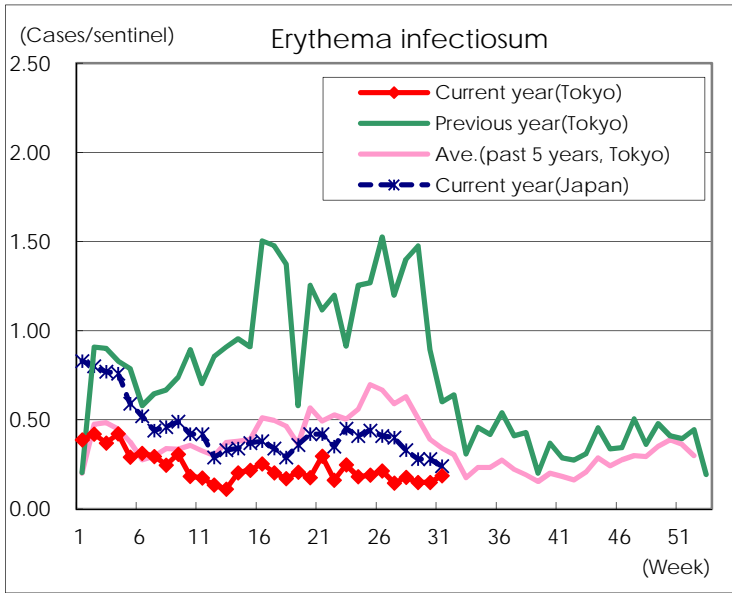
Number of patients with the diseases to be reported
by the designated clinics and hospitals

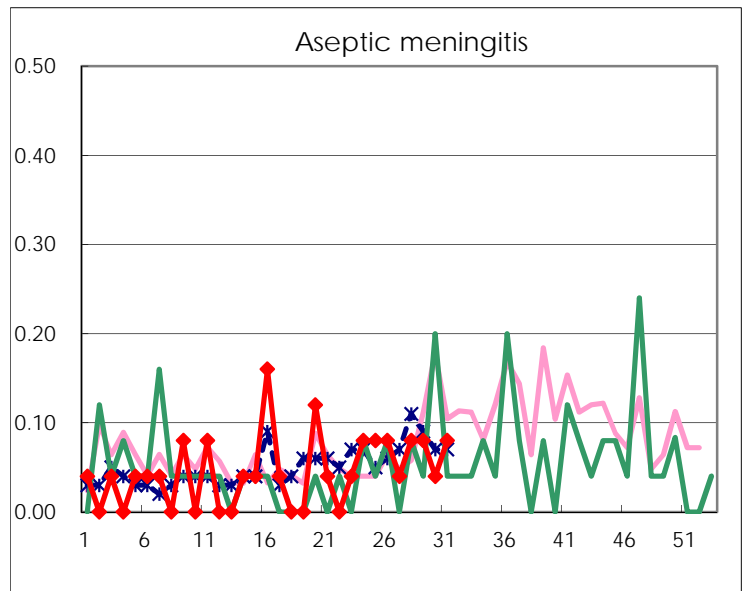
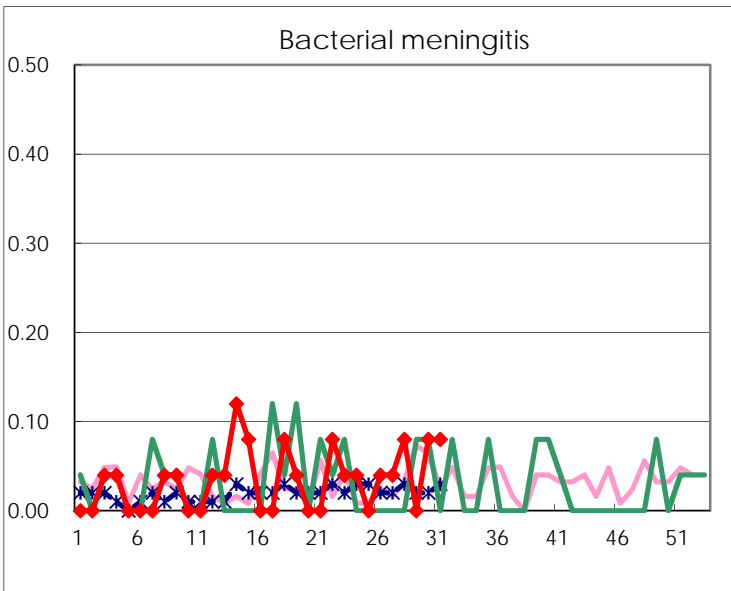
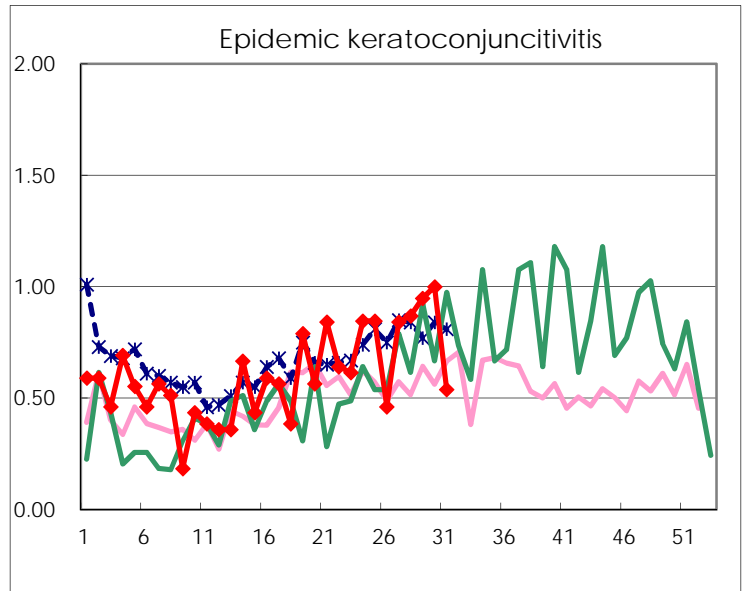
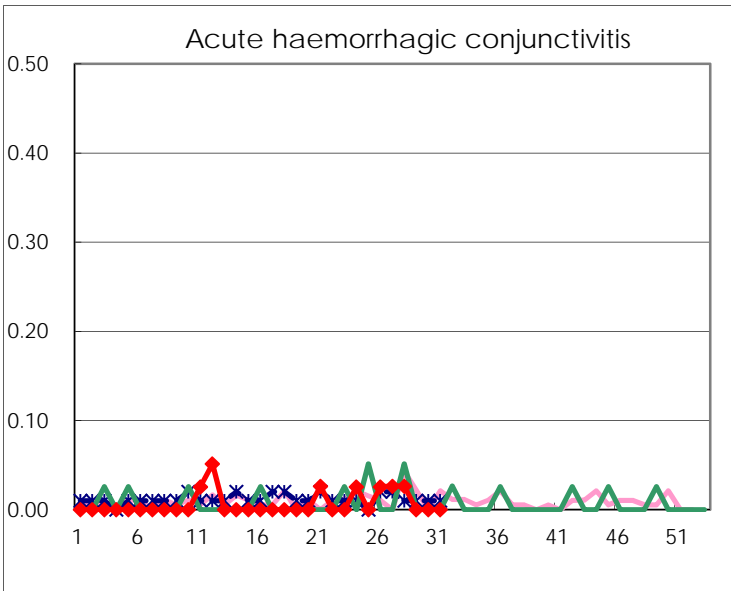
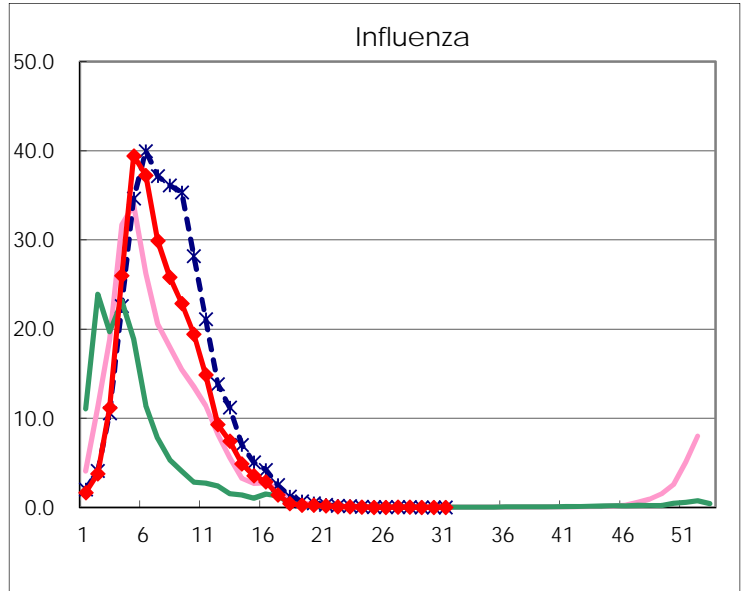
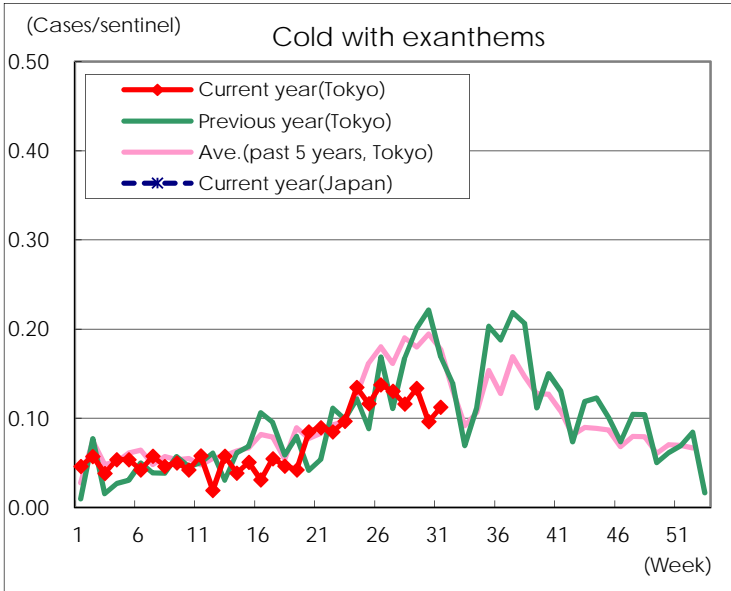
Diseases	Tokyo				
	28th	29th	30th	31st	/sentinel
Respiratory syncytial virus infection	36	42	66	93	0.36
Pharyngoconjunctival fever	183	101	141	78	0.30
Group A streptococcal pharyngitis	789	540	512	423	1.64
Infectious gastroenteritis	1,390	1,045	1,197	1,139	4.41
Chickenpox	79	105	84	86	0.33
Hand, foot, and mouth disease	238	230	225	261	1.01
Erythema infectiosum	46	39	39	48	0.19
Exanthem subitum	167	132	134	145	0.56
Pertussis	4	4	6	7	0.03
Herpangina	1,526	1,305	1,599	1,352	5.24
Mumps	208	216	260	235	0.91
Kawasaki disease	8	7	4	3	0.01
Cold with exanthems	30	35	25	29	0.11
Influenza	9	4	5	5	0.01
Acute hemorrhagic conjunctivitis	1				
Epidemic keratoconjunctivitis	33	37	39	21	0.54
Bacterial meningitis	2		2	2	0.08
Aseptic meningitis	2	2	1	2	0.08
Mycoplasma pneumonia	26	16	22	23	0.92
Chlamydial pneumonia (excluding psittacosis)			2		
Infectious gastroenteritis (only by Rotavirus)					
Influenza-Associated Hospitalizations	1				

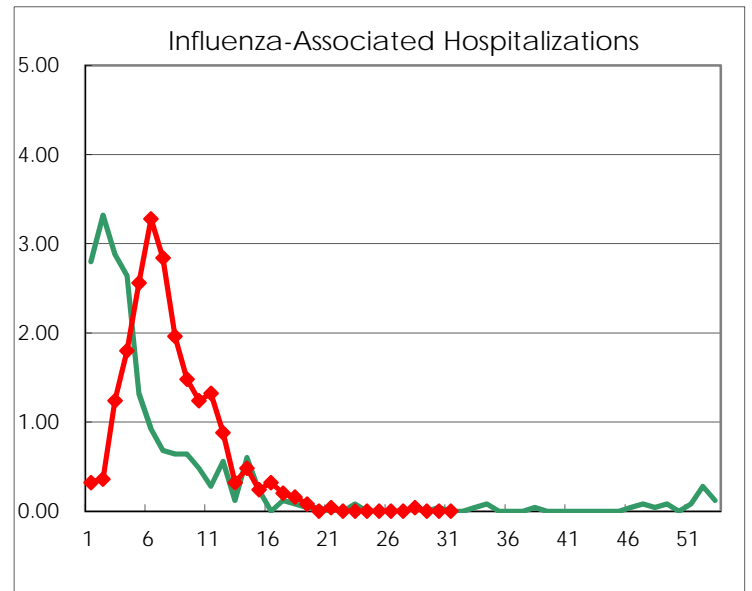
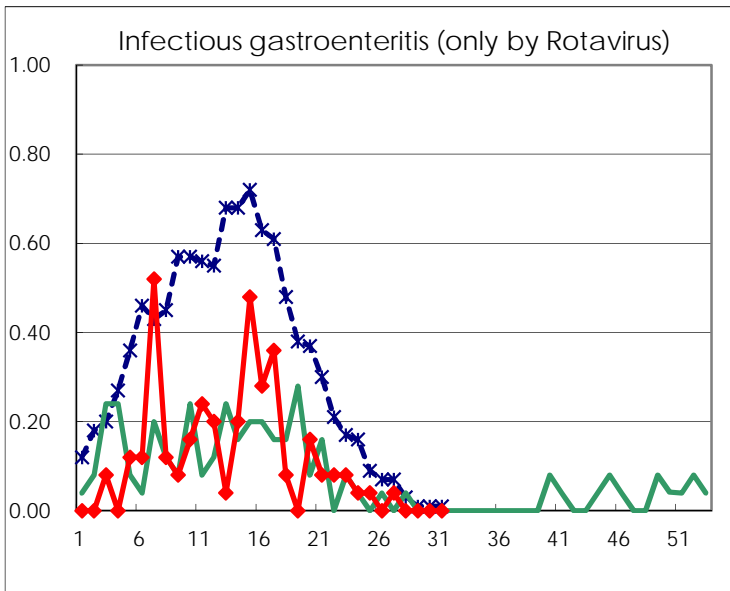
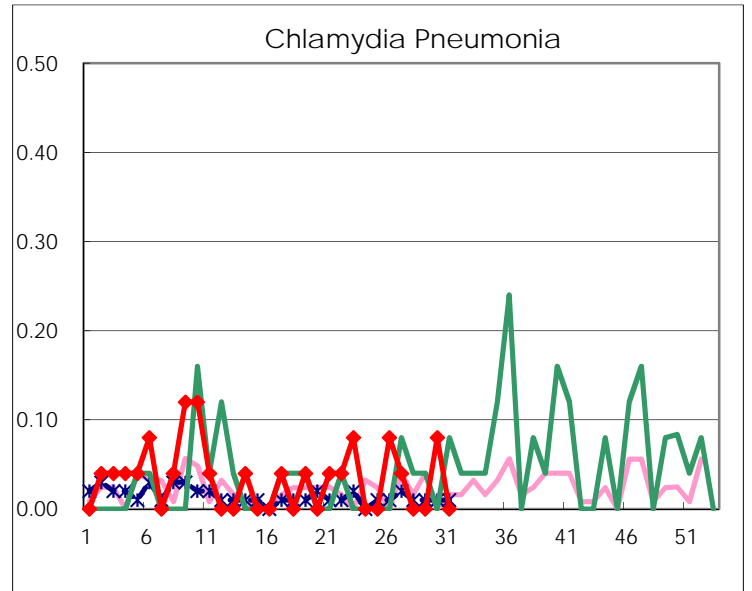
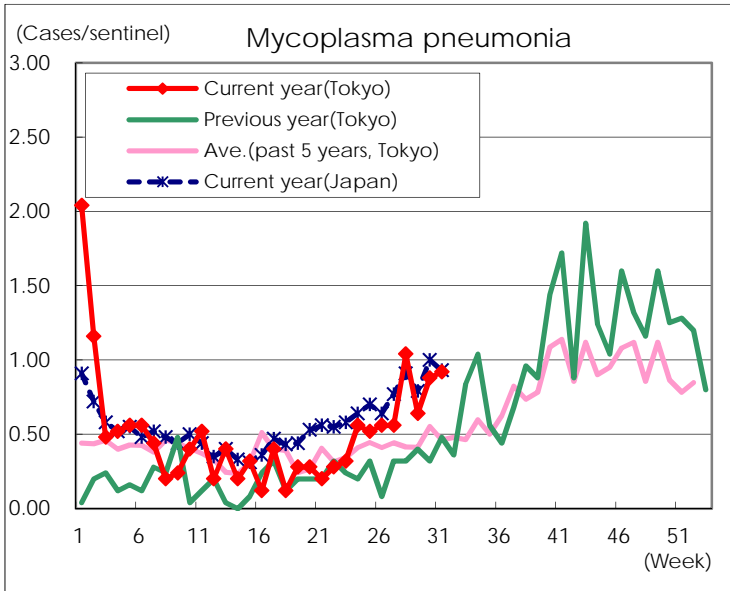
(Blank means 0.)

Disease Trend Graph (weekly reported cases per sentinel in comparison)









Number of sentinel facilities for weekly reporting		
Types of sentinels	Number of sentinels	Sentinels having reported
Pediatric	264	258
Influenza	419	406
Ophthalmic	39	39
Specially-designated	25	25