

18 August 2016 / Number 32

Surveillance System in Tokyo, Japan

The infectious diseases which all physicians must report

All physicians must report to health centers the incidence of the diseases which are shown at page one. Health centers electronically report the individual cases to Tokyo Metropolitan Infectious Disease Surveillance Center.

The infectious diseases required to be reported by the sentinels

The numbers of patients who visit the sentinel clinics or hospitals during a week are reported to health centers in Tokyo. And they electronically report the numbers to Tokyo Metropolitan Infectious Disease Surveillance Center. We have about 500 sentinel clinics and hospitals in Tokyo.

Tokyo Metropolitan Institute of Public Health

TEL:81-3-3363-3213 FAX:81-3-5332-7365

e-mail:www@tokyo-eiken.go.jp

URL:idsc.tokyo-eiken.go.jp/

Number of patients with the diseases which all physicians must report

Category	Diseases	Tokyo					Japan	
		29th	30th	31st	32nd	Cum 2016	32nd	Cum 2016
I	Ebola hemorrhagic fever							
	Crimean-Congo hemorrhagic fever							
	Smallpox							
	South American hemorrhagic fever							
	Plague							
	Marburg disease							
	Lassa fever							
II	Acute poliomyelitis							
	Tuberculosis	63	84	56	49	2,258	321	14,651
	Diphtheria							
	Severe Acute Respiratory Syndrome(SARS)							
	Middle East Respiratory Syndrome (MERS)							
	Avian influenza H5N1							
	Avian influenza H7N9							
III	Cholera							3
	Shigellosis	1		2	3	27	4	82
	Enterohemorrhagic Escherichia coli infection	14	15	11	18	215	142	1,624
	Typhoid fever			1		15		30
	Paratyphoid fever					5		9
IV	Hepatitis E					28	10	263
	West Nile fever							
	Hepatitis A			3	1	53	1	203
	Echinococcosis						1	13
	Yellow fever							
	Psittacosis					1		4
	Omsk hemorrhagic fever							
	Relapsing fever							5
	Kyasanur forest disease							
	Q fever							
	Rabies							
	Coccidioidomycosis					2		2
	Monkeypox							
	Zika virus infection							7
	Severe Fever with Thrombocytopenia Syndrome							38
	Hemorrhagic fever with renal syndrome							
	Western equine encephalitis							
	Tick-borne encephalitis						1	1
	Anthrax							
	Chikungunya fever					3	1	6
	Scrub typhus(Tsutsugamushi disease)							88
	Dengue fever	1	3			51	4	200
	Eastern equine encephalitis							
	Avian influenza (excluding H5N1 and H7N9)							
	Nipah virus infection							
	Japanese spotted fever						5	111
	Japanese encephalitis							
	Hantavirus pulmonary syndrome							
	Herpes B virus infection							
	Glanders							
	Brucellosis			1		1		1
	Venezuelan equine encephalitis							
Hendra virus infection								
Epidemic typhus								
Botulism					1	1	3	
Malaria		3			11		31	
Tularemia								
Lyme disease						1	5	
Lyssavirus infection(excluding rabies)								
Rift valley fever								
Melioidosis								
Legionellosis		7	2	3	72	23	846	
Leptospirosis			1		1		9	
Rocky mountain spotted fever								

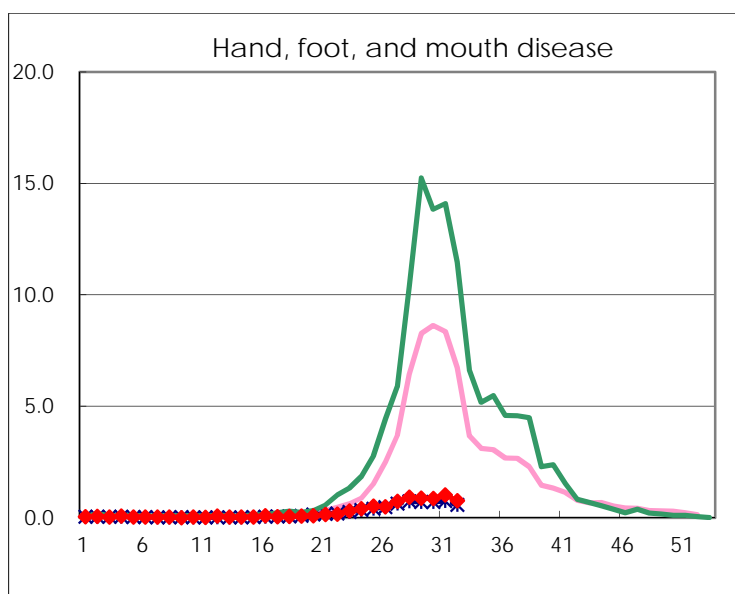
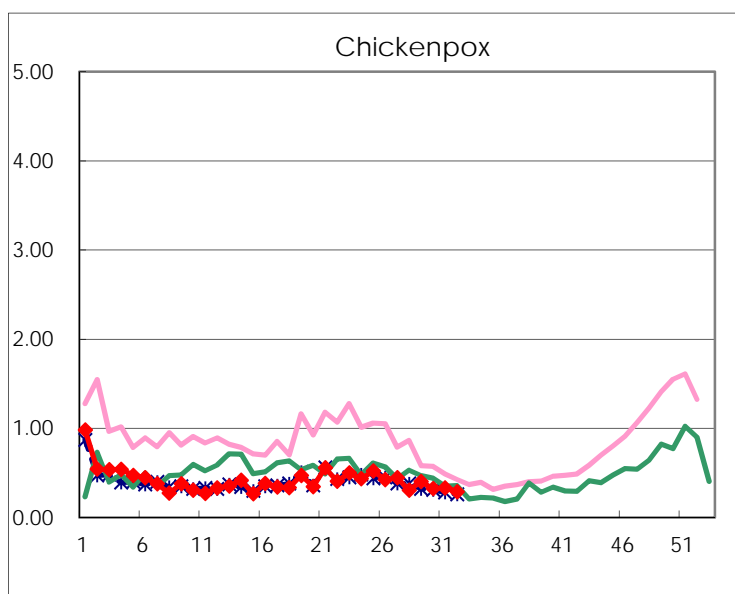
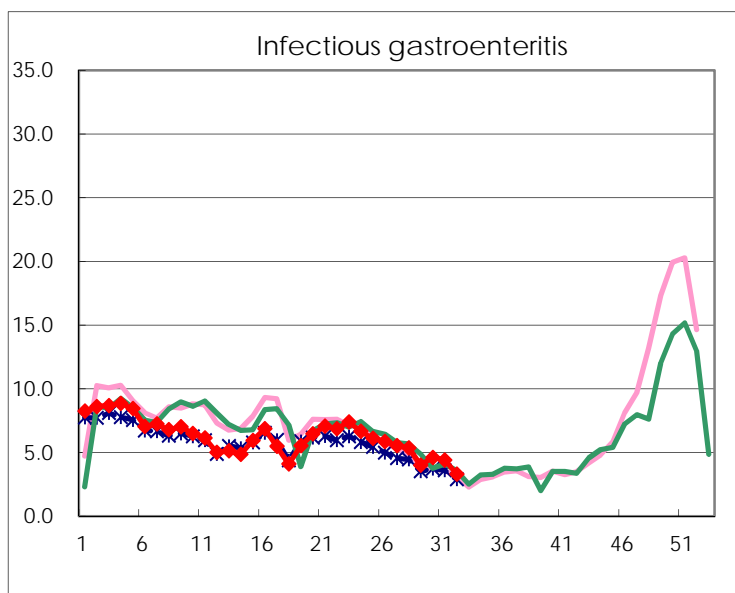
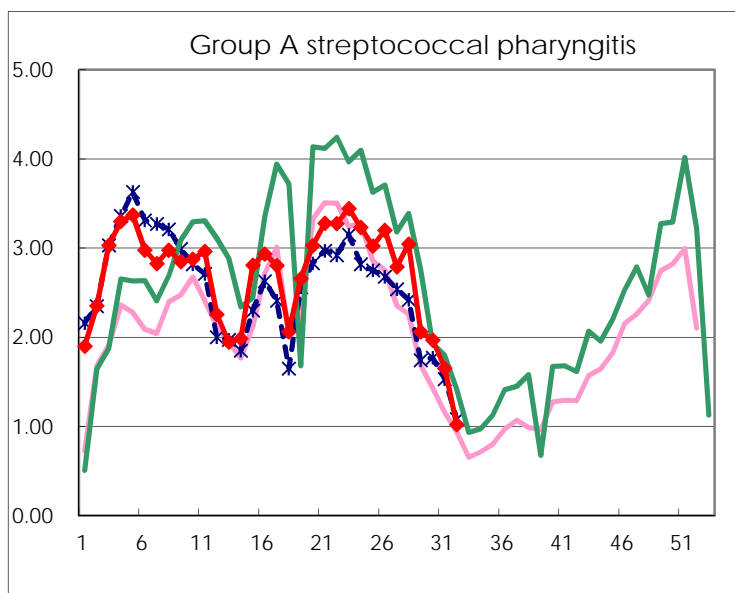
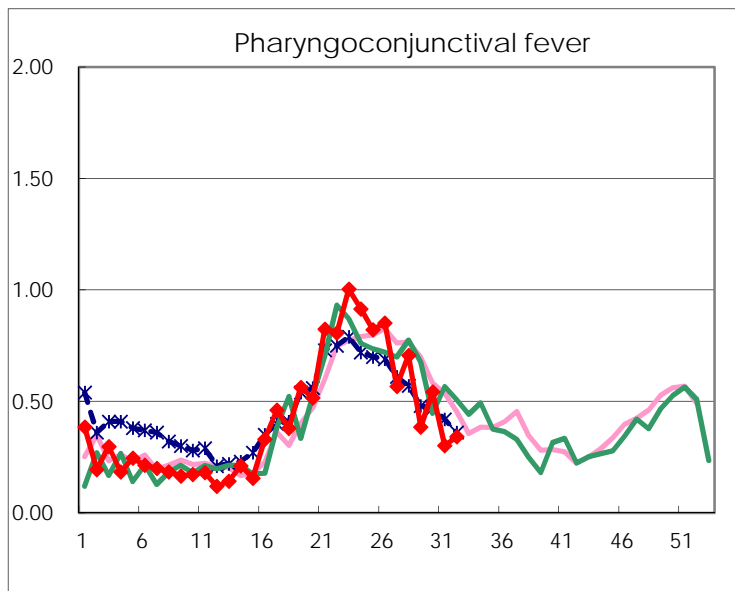
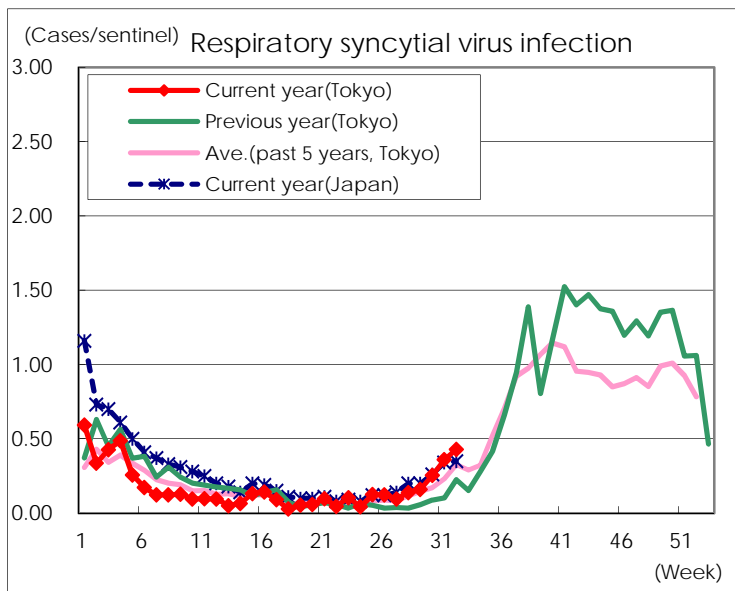
Category	Diseases	Tokyo					Japan	
		29th	30th	31st	32nd	Cum 2016	32nd	Cum 2016
V	Amebiasis	3	3	4		138	12	704
	Viral hepatitis(excluding hepatitis A and E)		2	3	2	44	1	159
	CRE infection	4	1	6	4	111	19	857
	Acute encephalitis(excluding JE and WNE)		3	1	2	69	9	533
	Cryptosporidiosis							6
	Creutzfeldt-Jakob disease		1			11	5	107
	Severe invasive streptococcal infections(TSLS)	2	1	2		42	3	324
	Acquired immunodeficiency syndrome (AIDS)	10	10	13	9	294	14	864
	Giardiasis		1	1	1	12	1	41
	Invasive <i>Haemophilus influenzae</i> disease	5	2	1	2	33	4	211
	Invasive meningococcal disease					3		28
	Invasive pneumococcal disease	2	7	6	2	237	19	1,760
	Varicella (limited to hospitalized case)	1	1	1		34	1	184
	Congenital rubella syndrome							
	Syphilis	33	41	41	32	1,040	49	2,591
	Disseminated cryptococcosis	1				10	2	77
	Tetanus					3	1	71
	Vancomycin-resistant <i>S. aureus</i> infection							
	Vancomycin-resistant Enterococcus infection							30
	Rubella					12		91
Measles					5	1	19	
MDRA infection					1		23	

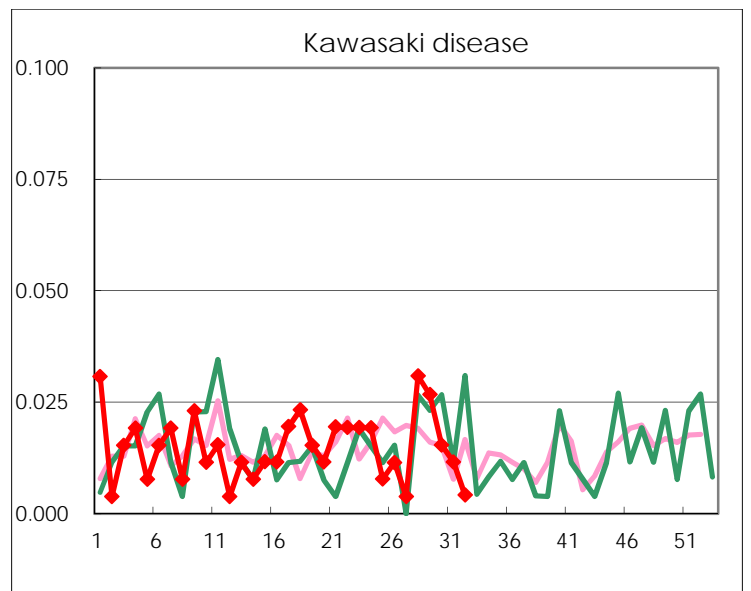
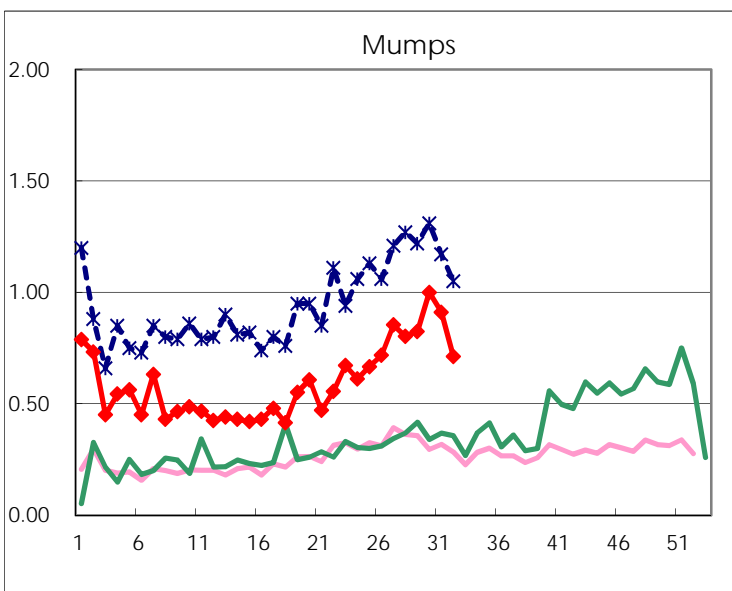
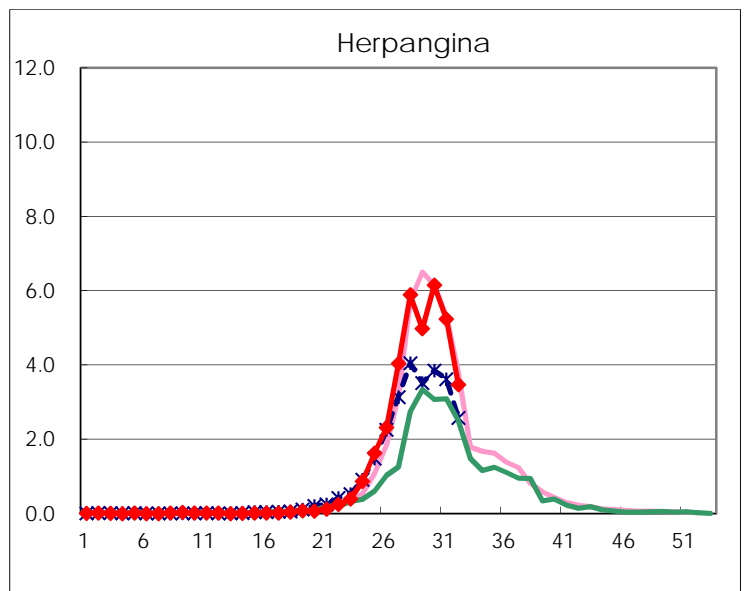
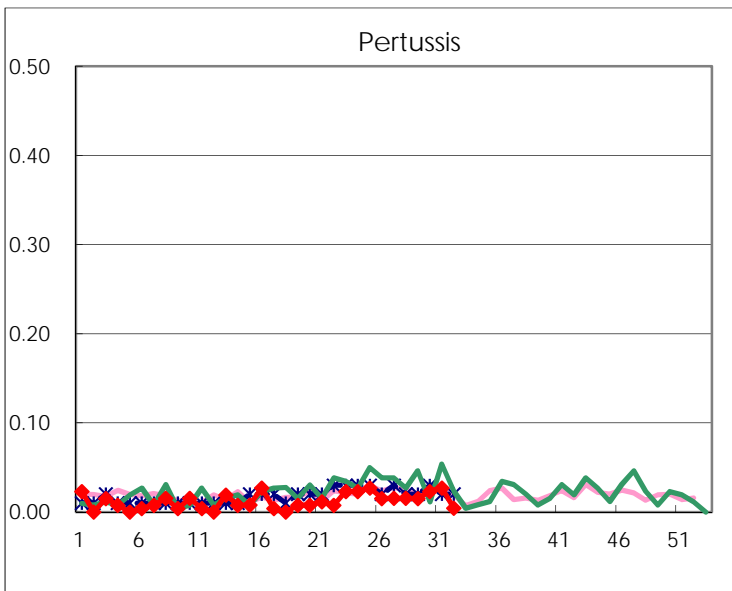
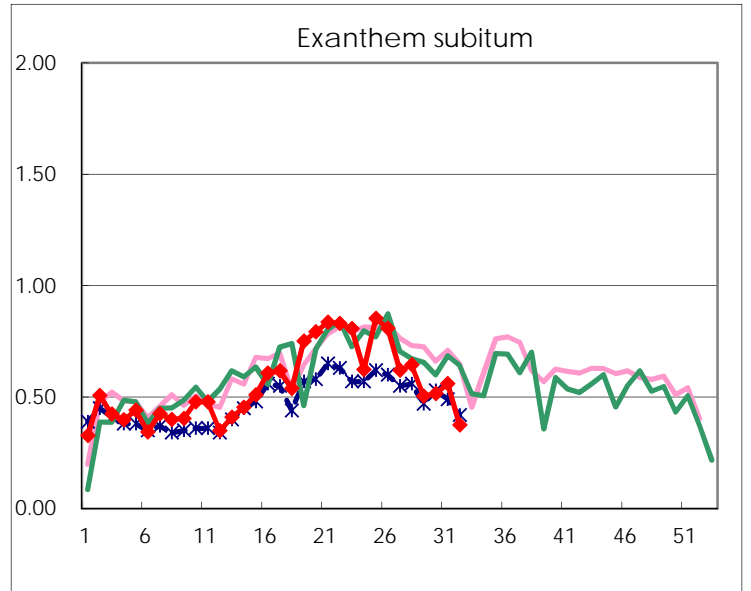
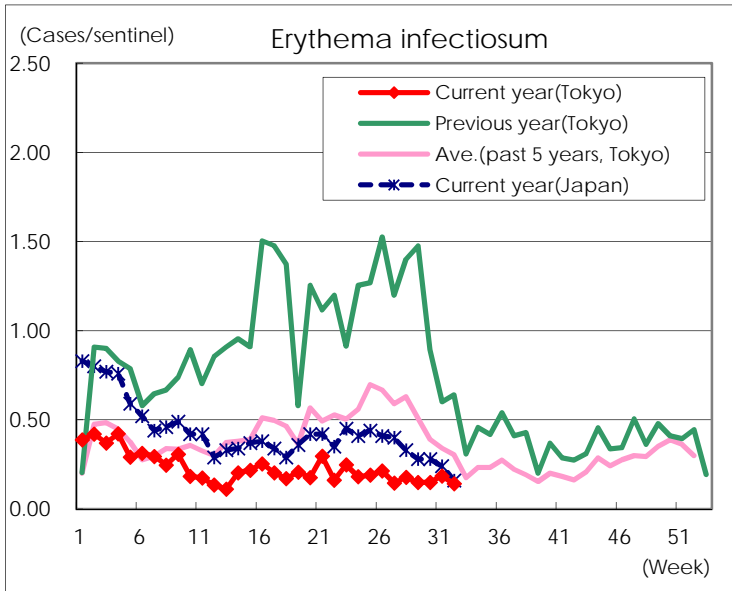
Number of patients with the diseases to be reported
by the designated clinics and hospitals

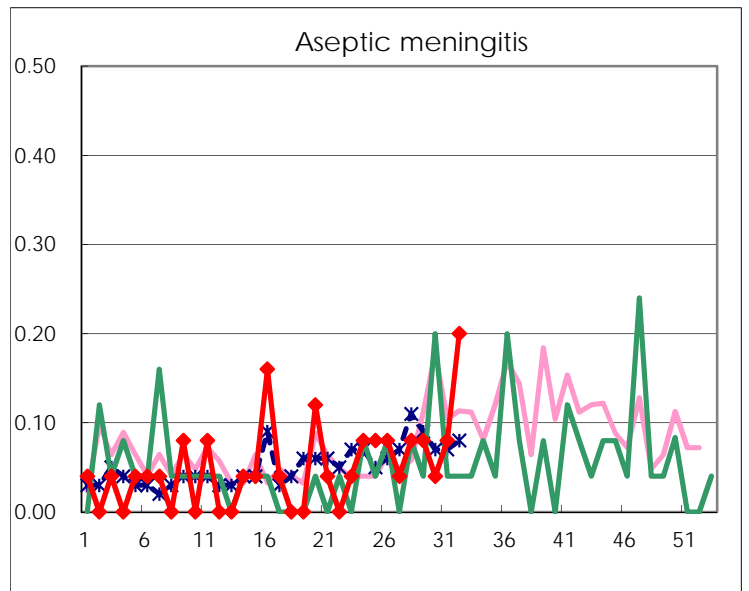
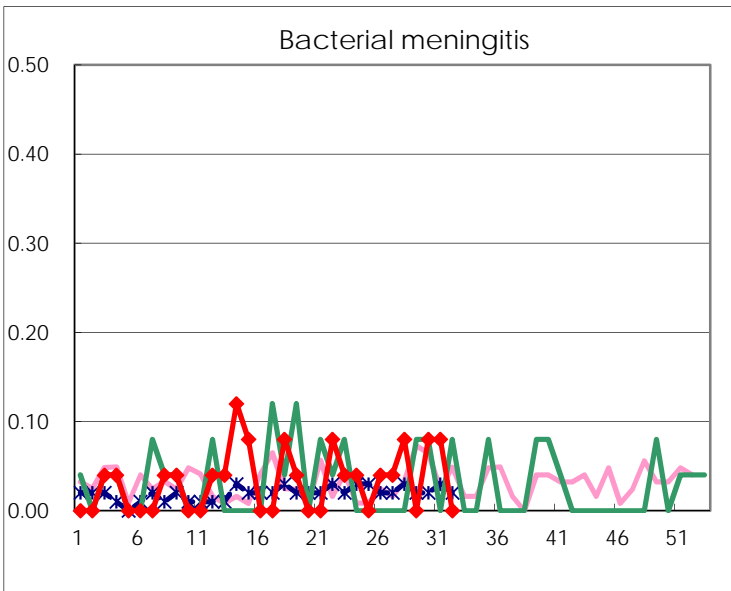
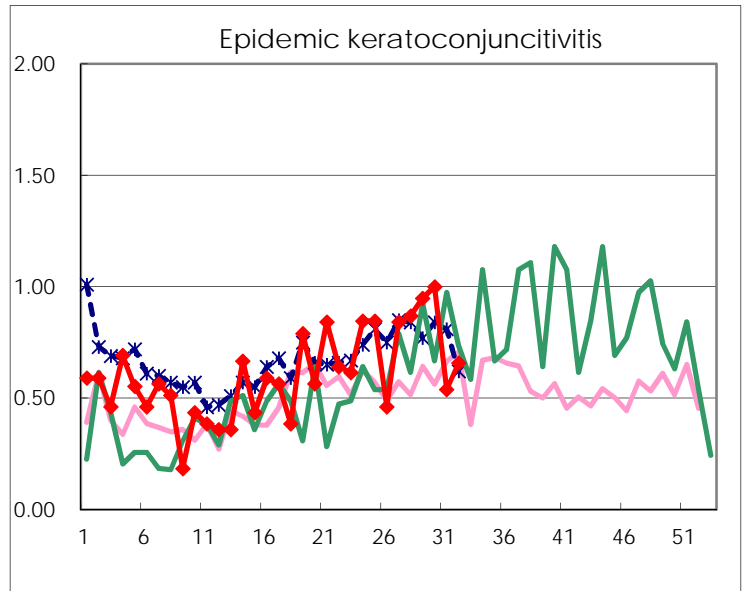
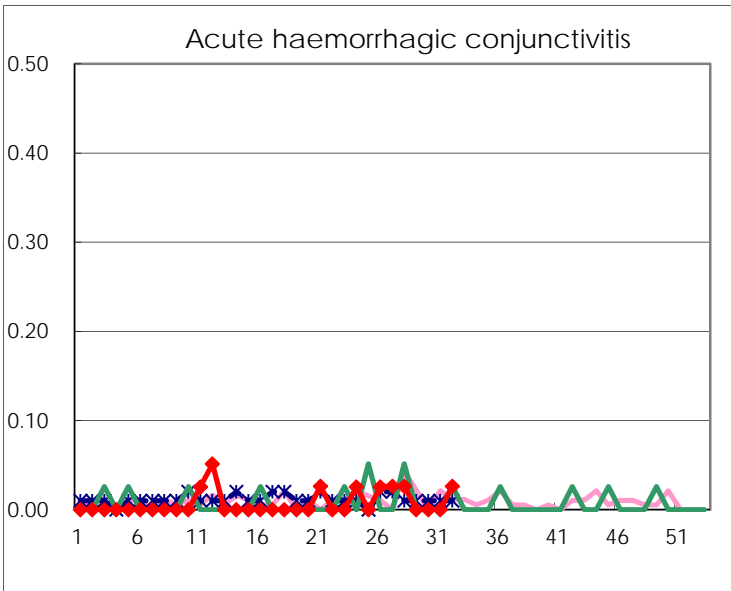
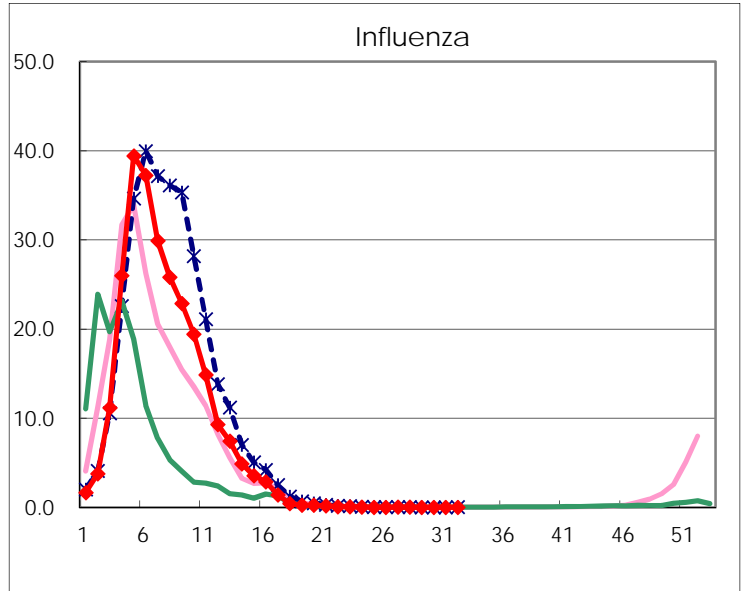
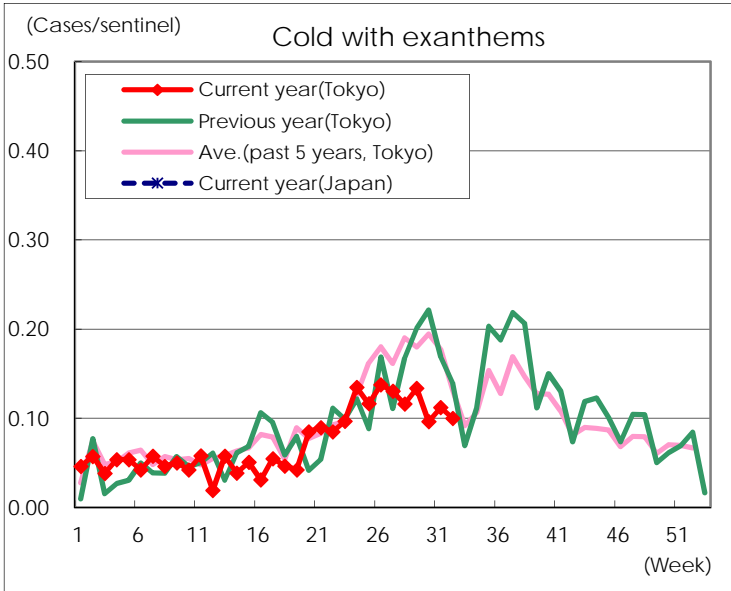
Diseases	Tokyo					
	29th	30th	31st	32nd	/sentinel	
Respiratory syncytial virus infection	42	66	93	103	0.43	
Pharyngoconjunctival fever	101	141	78	82	0.34	
Group A streptococcal pharyngitis	540	512	428	245	1.02	
Infectious gastroenteritis	1,045	1,197	1,142	793	3.30	
Chickenpox	105	84	86	69	0.29	
Hand, foot, and mouth disease	230	225	263	184	0.77	
Erythema infectiosum	39	39	48	34	0.14	
Exanthem subitum	132	134	145	90	0.38	
Pertussis	4	6	7	1		
Herpangina	1,305	1,599	1,358	834	3.48	
Mumps	216	260	236	171	0.71	
Kawasaki disease	7	4	3	1		
Cold with exanthems	35	25	29	24	0.10	
Influenza	4	5	5	6	0.02	
Acute hemorrhagic conjunctivitis				1	0.03	
Epidemic keratoconjunctivitis	37	39	21	25	0.66	
Bacterial meningitis		2	2			
Aseptic meningitis	2	1	2	5	0.20	
Mycoplasma pneumonia	16	22	23	23	0.92	
Chlamydial pneumonia (excluding psittacosis)		2				
Infectious gastroenteritis (only by Rotavirus)						
Influenza-Associated Hospitalizations				1	0.04	

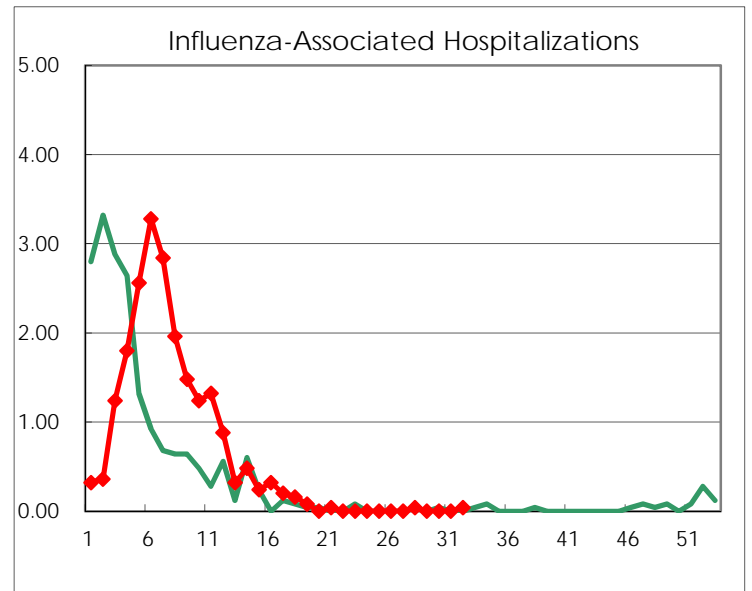
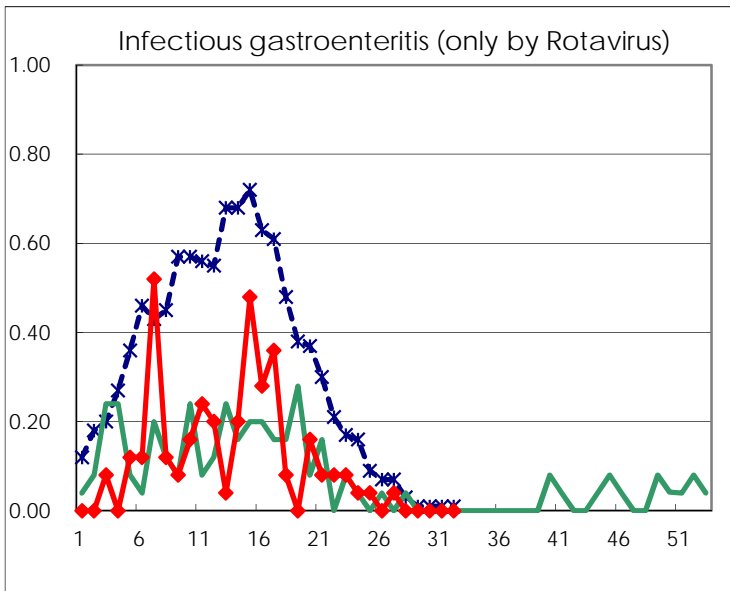
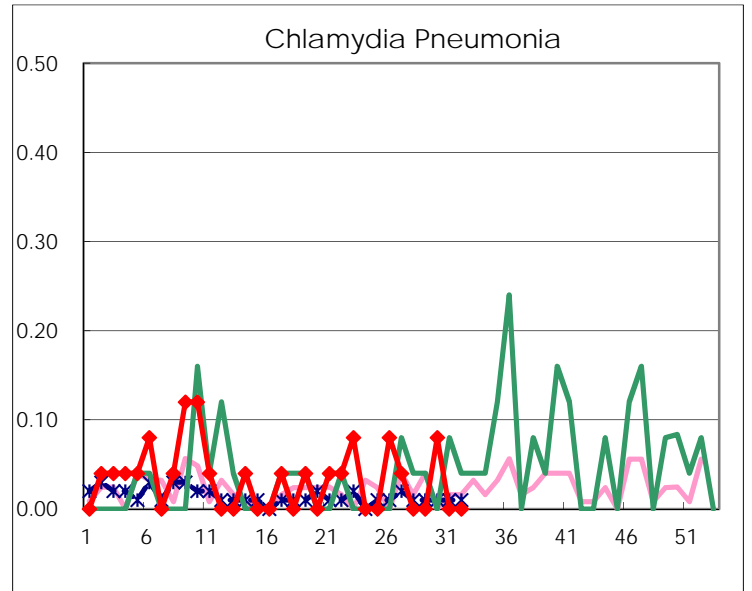
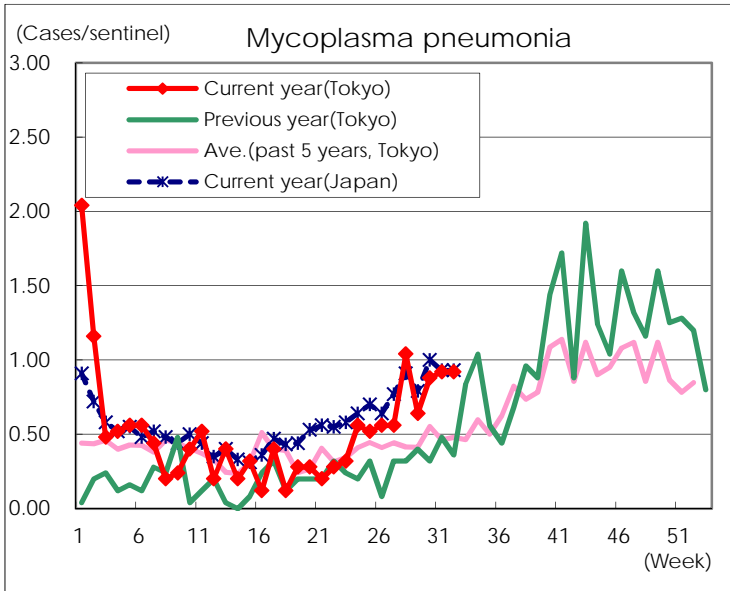
(Blank means 0.)

Disease Trend Graph (weekly reported cases per sentinel in comparison)









Number of sentinel facilities for weekly reporting		
Types of sentinels	Number of sentinels	Sentinels having reported
Pediatric	264	240
Influenza	419	375
Ophthalmic	39	38
Specially-designated	25	25