

1 September 2016 / Number 34

Surveillance System in Tokyo, Japan

The infectious diseases which all physicians must report

All physicians must report to health centers the incidence of the diseases which are shown at page one. Health centers electronically report the individual cases to Tokyo Metropolitan Infectious Disease Surveillance Center.

The infectious diseases required to be reported by the sentinels

The numbers of patients who visit the sentinel clinics or hospitals during a week are reported to health centers in Tokyo. And they electronically report the numbers to Tokyo Metropolitan Infectious Disease Surveillance Center. We have about 500 sentinel clinics and hospitals in Tokyo.

Tokyo Metropolitan Institute of Public Health

TEL:81-3-3363-3213 FAX:81-3-5332-7365

e-mail:www@tokyo-eiken.go.jp

URL:idsc.tokyo-eiken.go.jp/

Number of patients with the diseases which all physicians must report

Category	Diseases	Tokyo					Japan	
		31st	32nd	33rd	34th	Cum 2016	34th	Cum 2016
I	Ebola hemorrhagic fever							
	Crimean-Congo hemorrhagic fever							
	Smallpox							
	South American hemorrhagic fever							
	Plague							
	Marburg disease							
	Lassa fever							
II	Acute poliomyelitis							
	Tuberculosis	59	60	64	52	2,388	354	15,521
	Diphtheria							
	Severe Acute Respiratory Syndrome(SARS)							
	Middle East Respiratory Syndrome (MERS)							
	Avian influenza H5N1							
	Avian influenza H7N9							
III	Cholera							3
	Shigellosis	2	3	3		30		88
	Enterohemorrhagic Escherichia coli infection	11	19	16	28	260	151	2,078
	Typhoid fever	1				15		31
	Paratyphoid fever					5		10
IV	Hepatitis E			2		30	3	276
	West Nile fever							
	Hepatitis A	3	1			53	5	209
	Echinococcosis							14
	Yellow fever							
	Psittacosis					1		4
	Omsk hemorrhagic fever							
	Relapsing fever						1	6
	Kyasanur forest disease							
	Q fever							
	Rabies							
	Coccidioidomycosis					2	1	3
	Monkeypox							
	Zika virus infection							7
	Severe Fever with Thrombocytopenia Syndrome						1	39
	Hemorrhagic fever with renal syndrome							
	Western equine encephalitis							
	Tick-borne encephalitis							1
	Anthrax							
	Chikungunya fever					3		6
	Scrub typhus(Tsutsugamushi disease)							90
	Dengue fever			1	4	56	13	222
	Eastern equine encephalitis							
	Avian influenza (excluding H5N1 and H7N9)							
	Nipah virus infection							
	Japanese spotted fever						7	126
	Japanese encephalitis							
	Hantavirus pulmonary syndrome							
	Herpes B virus infection							
	Glanders							
	Brucellosis	1				1		1
	Venezuelan equine encephalitis							
Hendra virus infection								
Epidemic typhus								
Botulism					1		3	
Malaria			1	1	13		33	
Tularemia								
Lyme disease							5	
Lyssavirus infection(excluding rabies)								
Rift valley fever								
Melioidosis								
Legionellosis	2	3	3		75	17	892	
Leptospirosis	1			2	3	1	19	
Rocky mountain spotted fever								

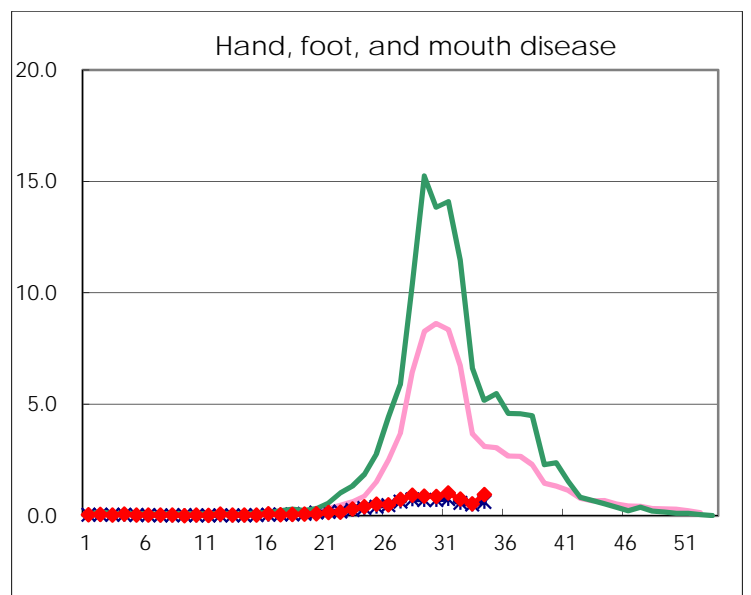
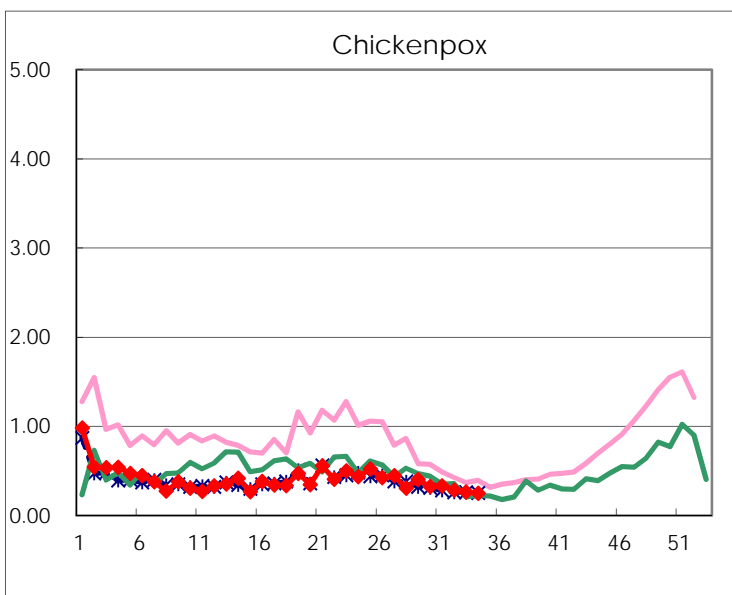
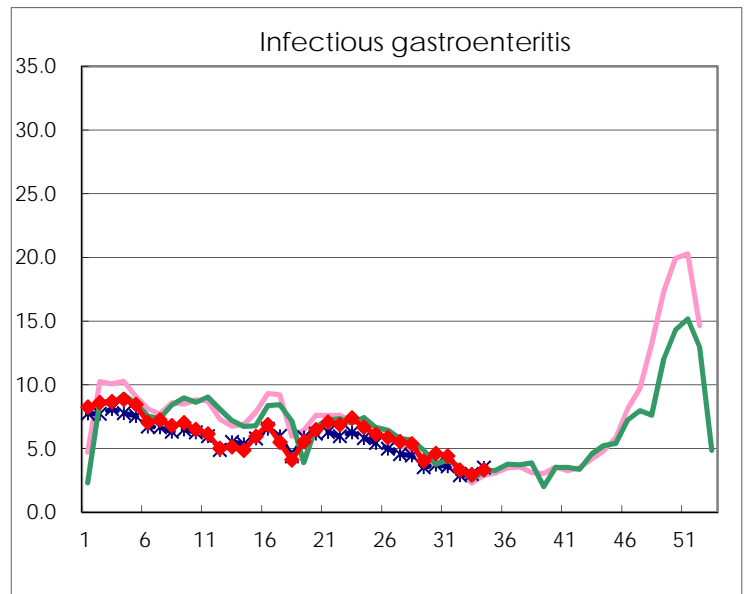
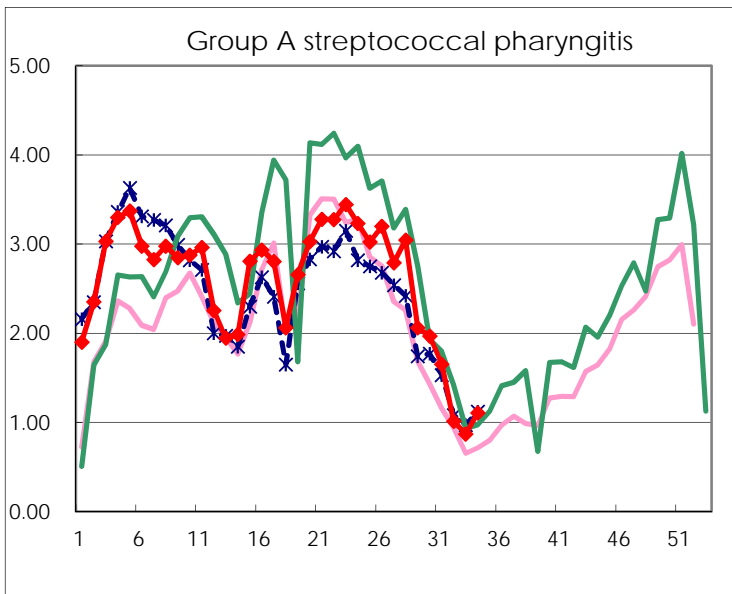
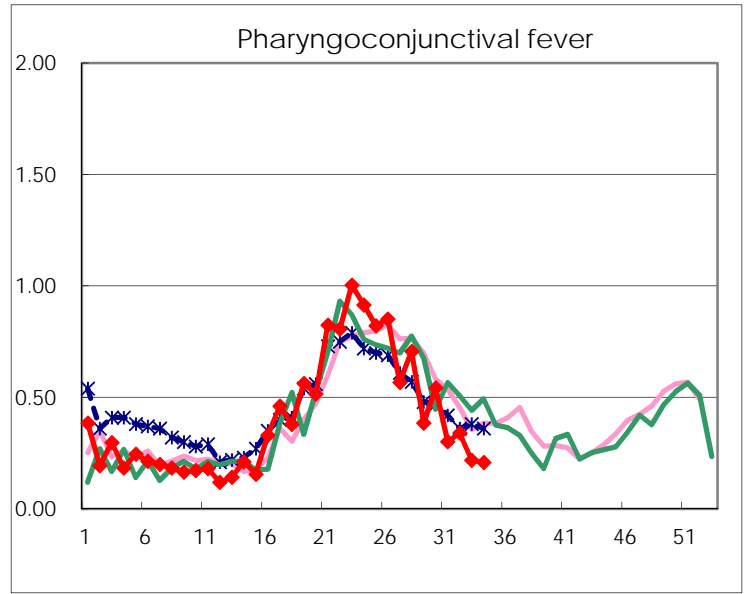
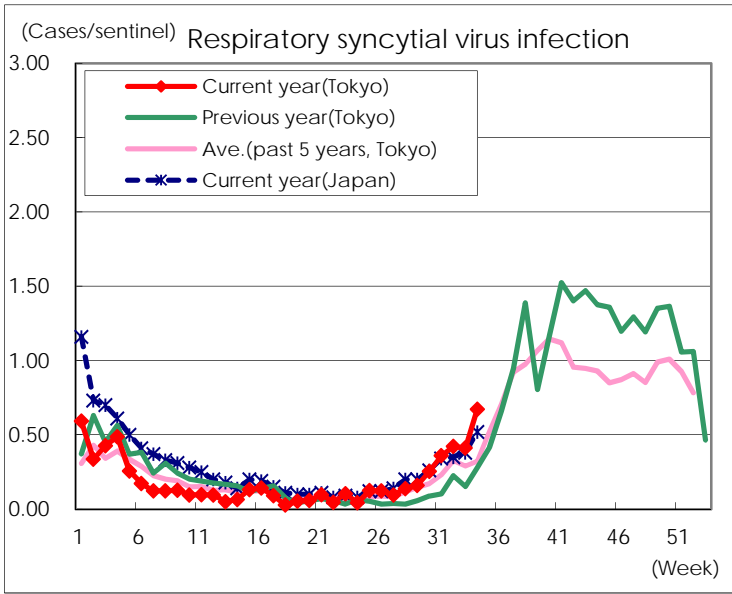
Category	Diseases	Tokyo					Japan	
		31st	32nd	33rd	34th	Cum 2016	34th	Cum 2016
V	Amebiasis	4		8	6	152	12	751
	Viral hepatitis(excluding hepatitis A and E)	3	2	1	4	49	5	174
	CRE infection	6	4	8	1	120	22	918
	Acute encephalitis(excluding JE and WNE)	1	2	1	1	71	9	558
	Cryptosporidiosis							6
	Creutzfeldt-Jakob disease					11	1	117
	Severe invasive streptococcal infections(TSLS)	2		1	3	46	4	342
	Acquired immunodeficiency syndrome (AIDS)	13	9	11	13	318	13	923
	Giardiasis	1	1			12		43
	Invasive <i>Haemophilus influenzae</i> disease	1	2	1		34	1	215
	Invasive meningococcal disease					3		28
	Invasive pneumococcal disease	6	3	5	2	245	13	1,815
	Varicella (limited to hospitalized case)	1		1	1	36	4	196
	Congenital rubella syndrome							
	Syphilis	41	33	39	37	1,117	66	2,778
	Disseminated cryptococcosis					10	1	81
	Tetanus					3	1	75
	Vancomycin-resistant <i>S. aureus</i> infection							
	Vancomycin-resistant Enterococcus infection						2	34
	Rubella				1	13	1	94
Measles			1		6	9	41	
MDRA infection					1		23	

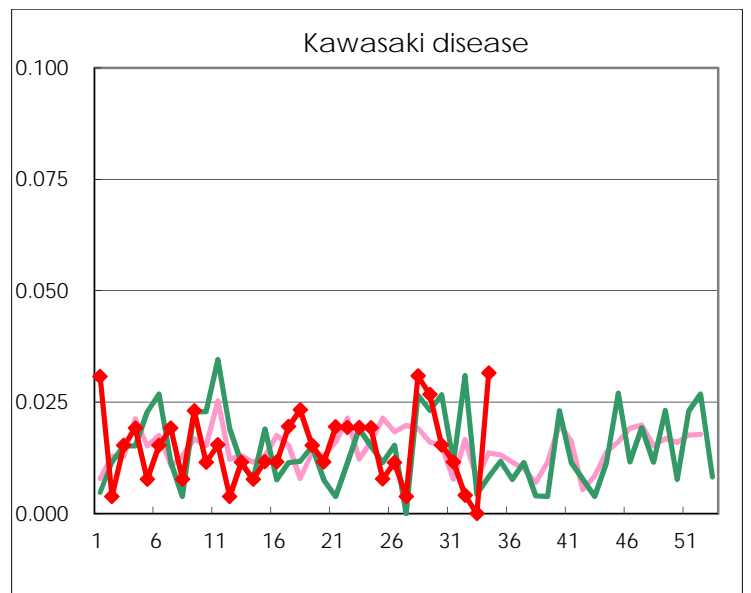
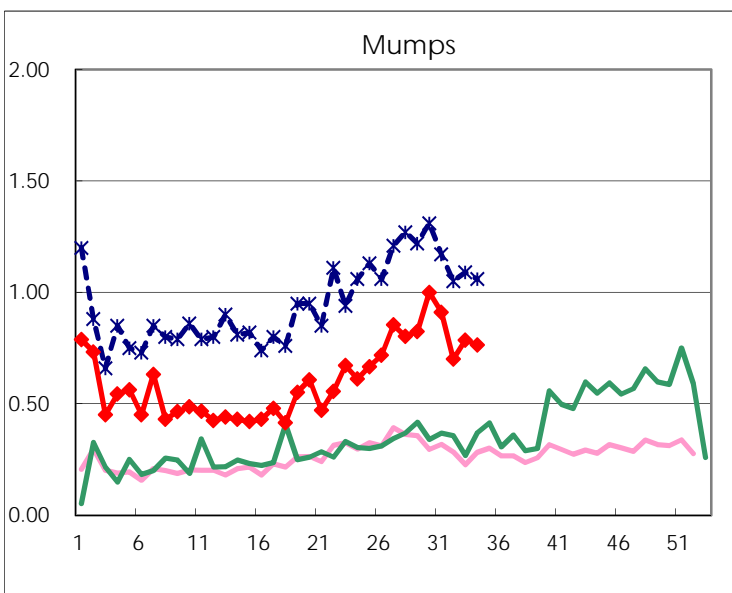
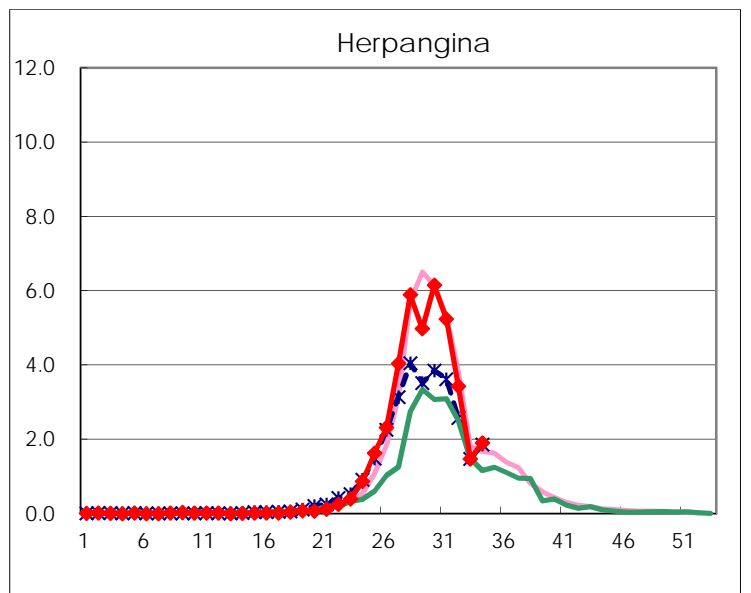
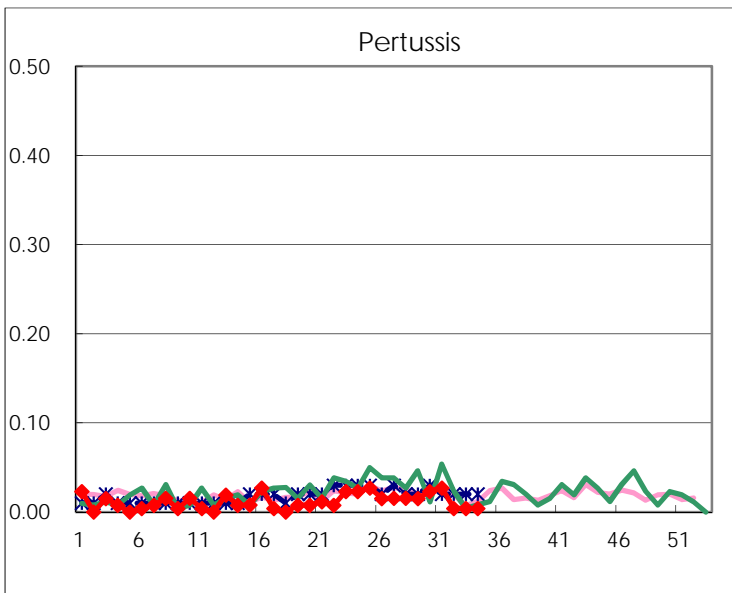
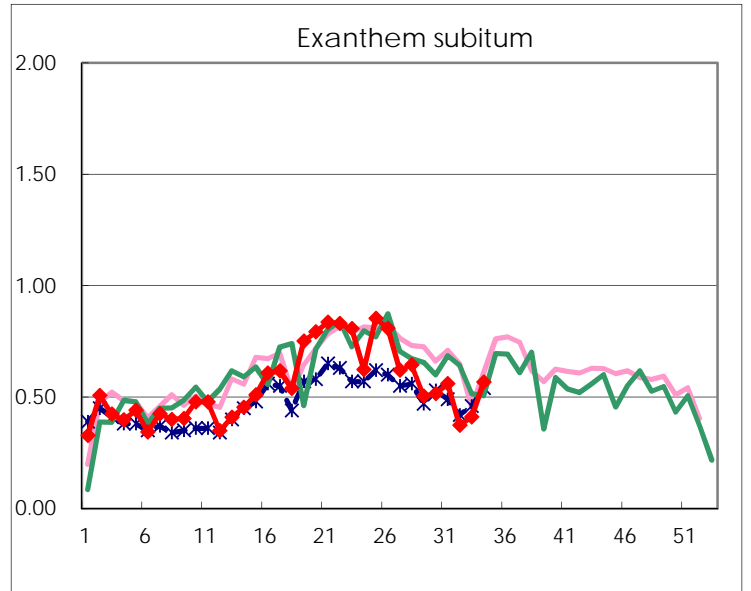
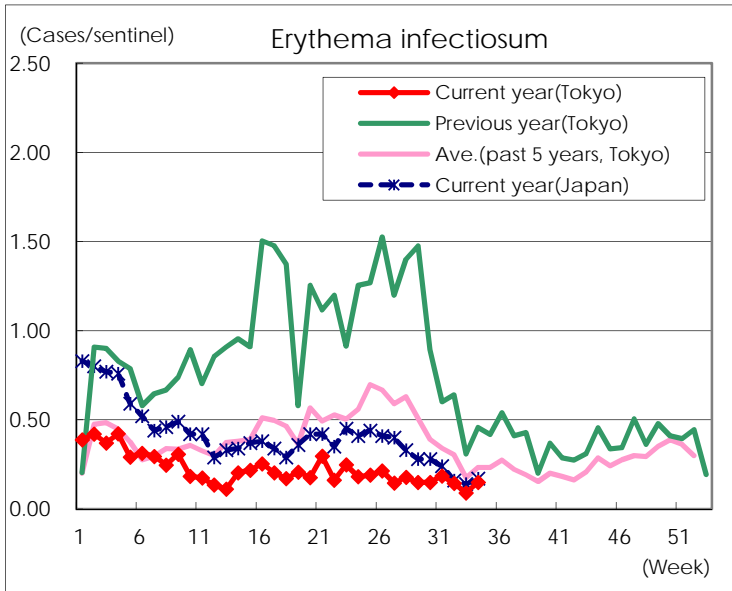
Number of patients with the diseases to be reported
by the designated clinics and hospitals

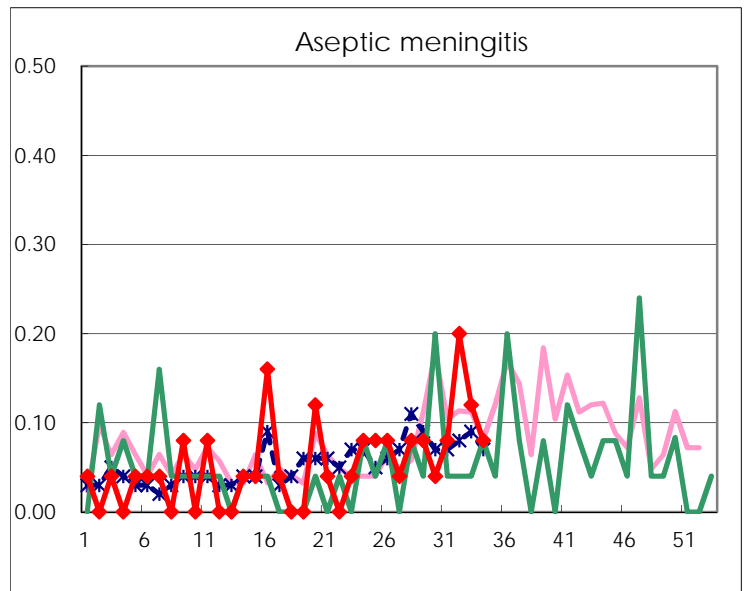
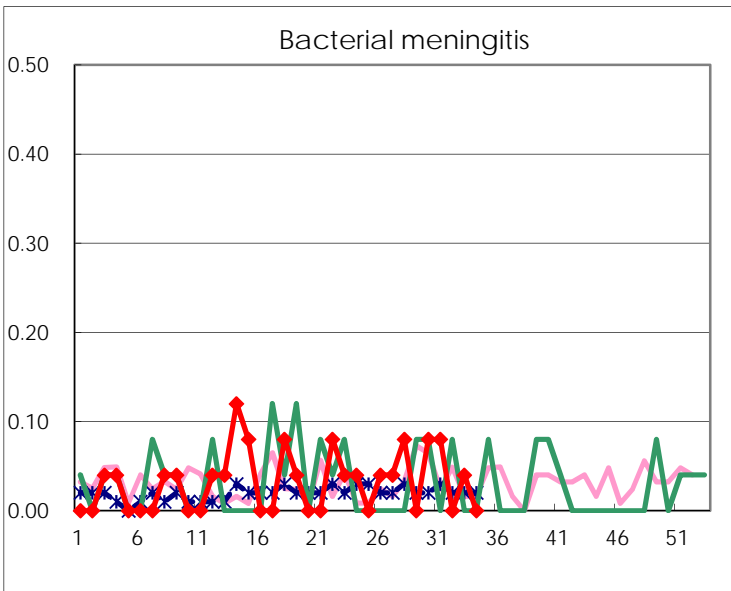
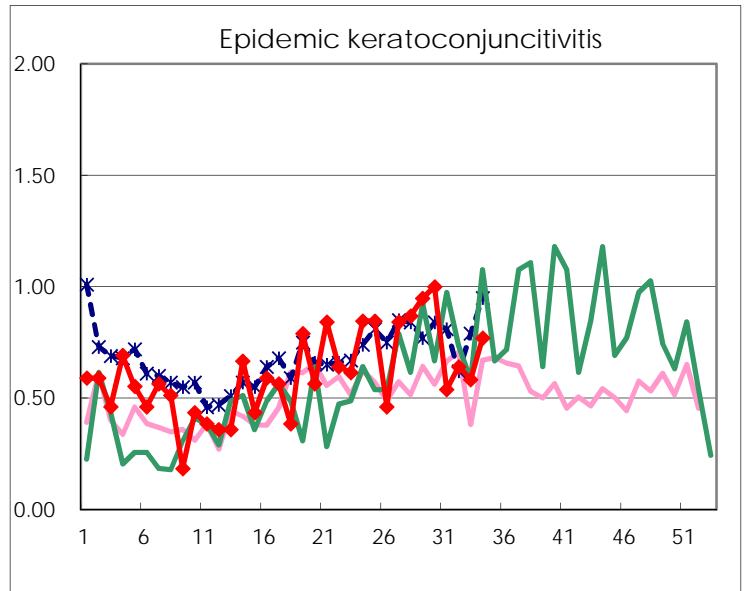
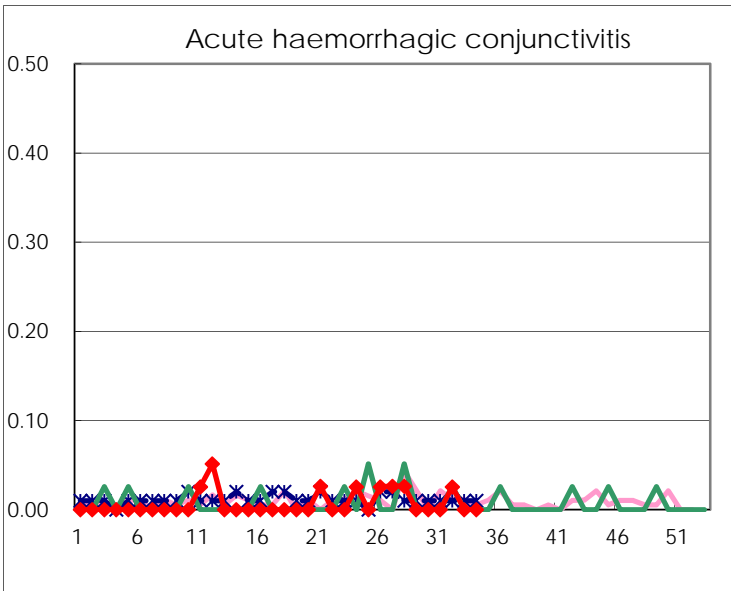
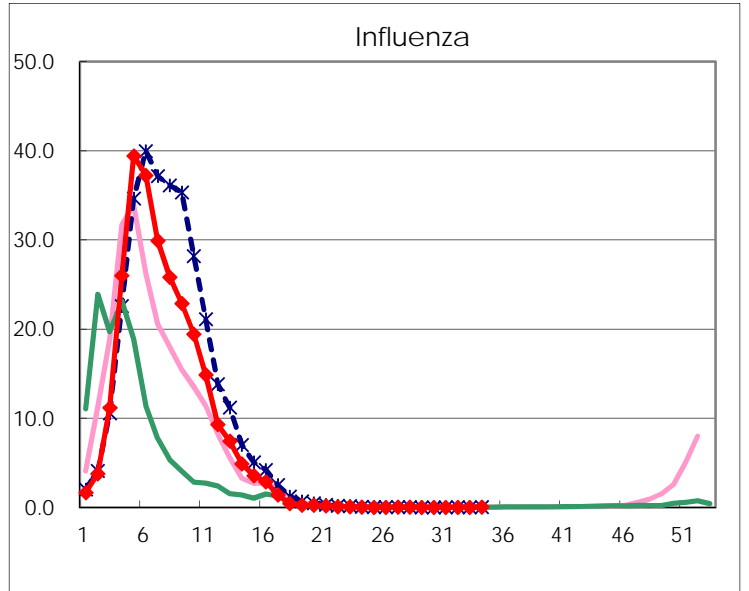
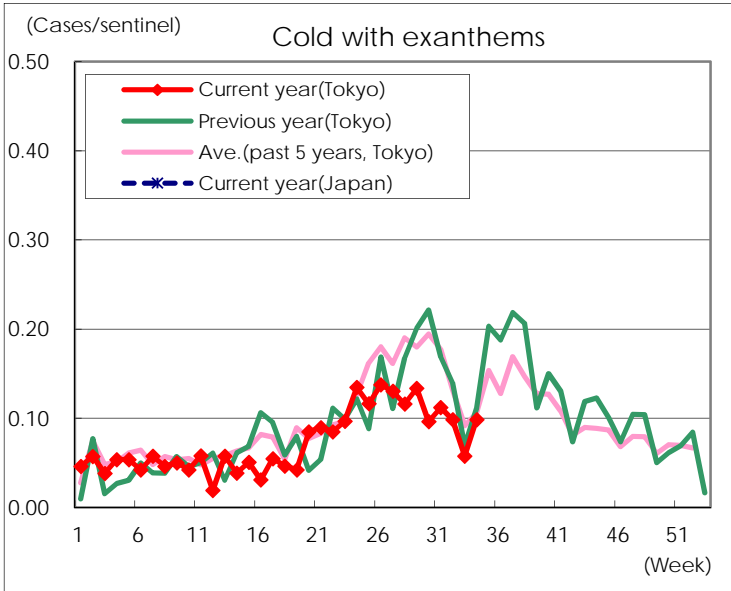
Diseases	Tokyo				
	31st	32nd	33rd	34th	/sentinel
Respiratory syncytial virus infection	93	103	100	171	0.67
Pharyngoconjunctival fever	78	83	53	53	0.21
Group A streptococcal pharyngitis	428	247	211	281	1.11
Infectious gastroenteritis	1,142	802	718	845	3.33
Chickenpox	86	69	64	63	0.25
Hand, foot, and mouth disease	263	184	129	242	0.95
Erythema infectiosum	48	35	22	38	0.15
Exanthem subitum	145	91	100	144	0.57
Pertussis	7	1	1	1	
Herpangina	1,358	838	359	484	1.91
Mumps	236	171	191	194	0.76
Kawasaki disease	3	1		8	0.03
Cold with exanthems	29	24	14	25	0.10
Influenza	5	6	4	15	0.04
Acute hemorrhagic conjunctivitis		1			
Epidemic keratoconjunctivitis	21	25	21	30	0.77
Bacterial meningitis	2		1		
Aseptic meningitis	2	5	3	2	0.08
Mycoplasma pneumonia	23	23	26	29	1.16
Chlamydial pneumonia (excluding psittacosis)			1		
Infectious gastroenteritis (only by Rotavirus)					
Influenza-Associated Hospitalizations		1			

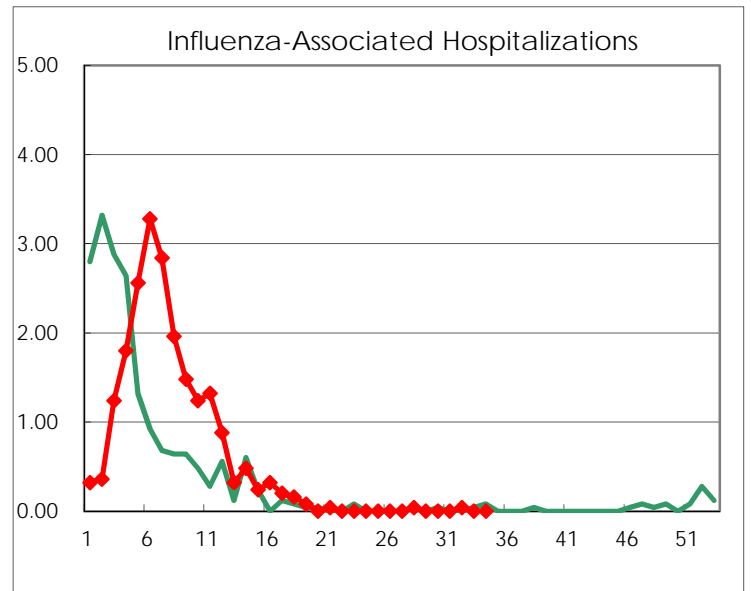
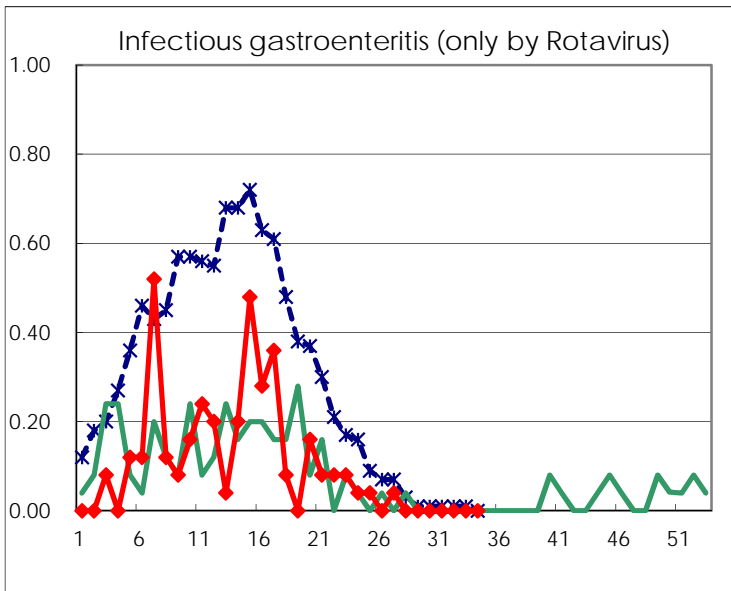
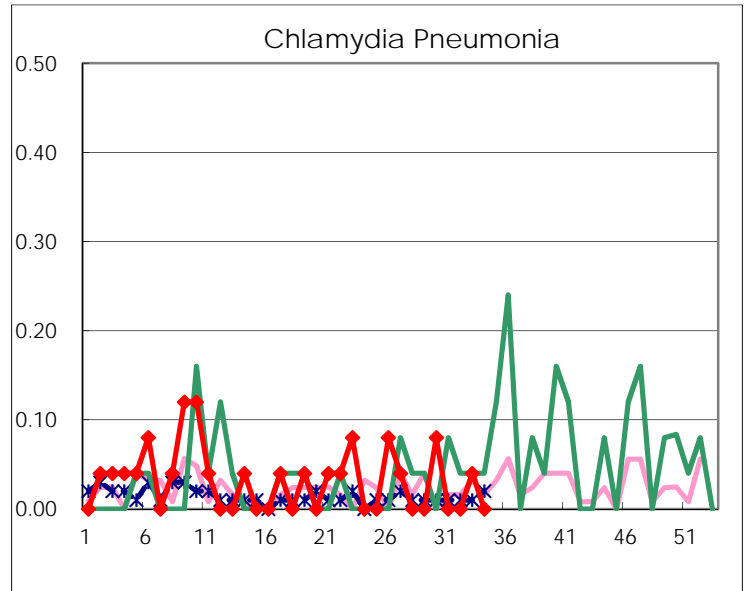
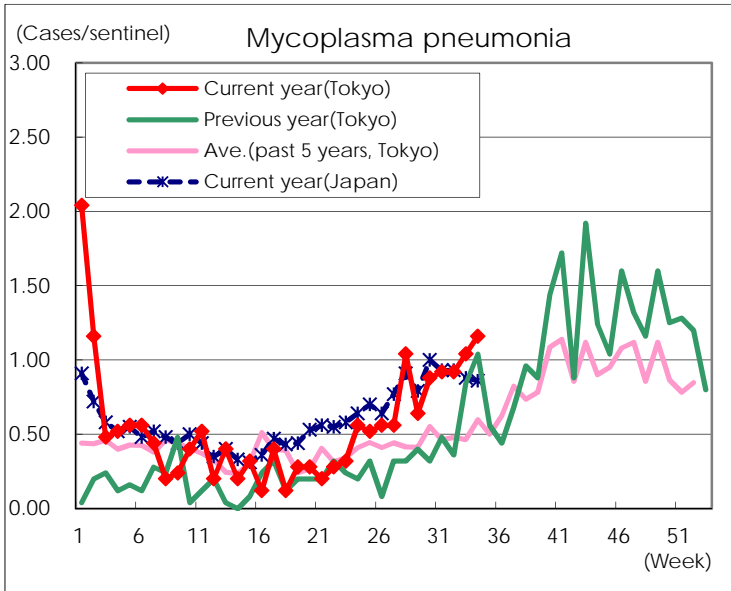
(Blank means 0.)

Disease Trend Graph (weekly reported cases per sentinel in comparison)









Number of sentinel facilities for weekly reporting		
Types of sentinels	Number of sentinels	Sentinels having reported
Pediatric	264	254
Influenza	419	405
Ophthalmic	39	39
Specially-designated	25	25