

8 September 2016 / Number 35

Surveillance System in Tokyo, Japan

The infectious diseases which all physicians must report

All physicians must report to health centers the incidence of the diseases which are shown at page one. Health centers electronically report the individual cases to Tokyo Metropolitan Infectious Disease Surveillance Center.

The infectious diseases required to be reported by the sentinels

The numbers of patients who visit the sentinel clinics or hospitals during a week are reported to health centers in Tokyo. And they electronically report the numbers to Tokyo Metropolitan Infectious Disease Surveillance Center. We have about 500 sentinel clinics and hospitals in Tokyo.

Tokyo Metropolitan Institute of Public Health

TEL:81-3-3363-3213 FAX:81-3-5332-7365

e-mail:www@tokyo-eiken.go.jp

URL:idsc.tokyo-eiken.go.jp/

Number of patients with the diseases which all physicians must report

Category	Diseases	Tokyo					Japan	
		32nd	33rd	34th	35th	Cum 2016	35th	Cum 2016
I	Ebola hemorrhagic fever							
	Crimean-Congo hemorrhagic fever							
	Smallpox							
	South American hemorrhagic fever							
	Plague							
	Marburg disease							
	Lassa fever							
II	Acute poliomyelitis							
	Tuberculosis	60	63	52	49	2,437	426	16,093
	Diphtheria							
	Severe Acute Respiratory Syndrome(SARS)							
	Middle East Respiratory Syndrome (MERS)							
	Avian influenza H5N1							
	Avian influenza H7N9							
III	Cholera						2	5
	Shigellosis	3	3			30	1	89
	Enterohemorrhagic Escherichia coli infection	19	16	28	38	298	232	2,358
	Typhoid fever					15		31
	Paratyphoid fever					5	1	12
IV	Hepatitis E		2			30	2	280
	West Nile fever							
	Hepatitis A	1				53	1	211
	Echinococcosis							14
	Yellow fever							
	Psittacosis					1		4
	Omsk hemorrhagic fever							
	Relapsing fever							6
	Kyasanur forest disease							
	Q fever							
	Rabies							
	Coccidioidomycosis					2		3
	Monkeypox							
	Zika virus infection							7
	Severe Fever with Thrombocytopenia Syndrome							39
	Hemorrhagic fever with renal syndrome							
	Western equine encephalitis							
	Tick-borne encephalitis							1
	Anthrax							
	Chikungunya fever					3		6
	Scrub typhus(Tsutsugamushi disease)						1	91
	Dengue fever		1	4	4	60	13	237
	Eastern equine encephalitis							
	Avian influenza (excluding H5N1 and H7N9)							
	Nipah virus infection							
	Japanese spotted fever						6	136
	Japanese encephalitis							
	Hantavirus pulmonary syndrome							
	Herpes B virus infection							
	Glanders							
	Brucellosis					1		1
	Venezuelan equine encephalitis							
Hendra virus infection								
Epidemic typhus								
Botulism					1		3	
Malaria		1	1		13		33	
Tularemia								
Lyme disease							5	
Lyssavirus infection(excluding rabies)								
Rift valley fever								
Melioidosis								
Legionellosis	3	3		3	78	39	936	
Leptospirosis			2	1	4	1	24	
Rocky mountain spotted fever								

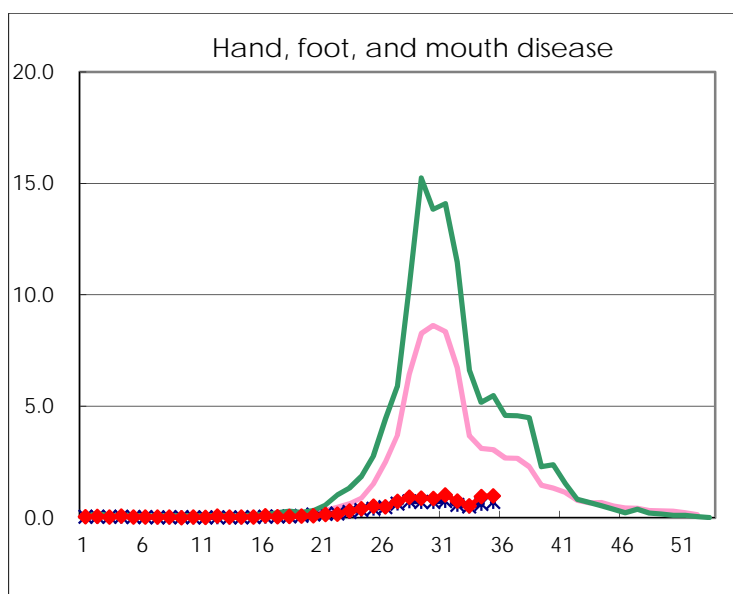
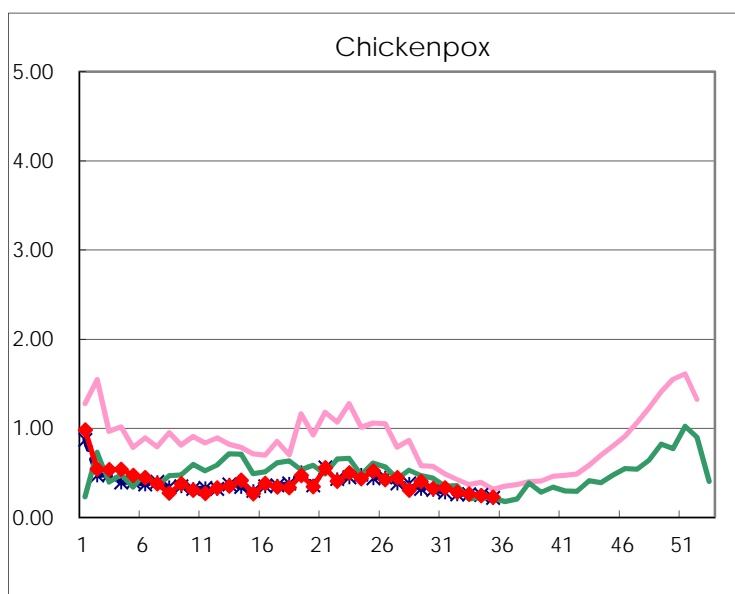
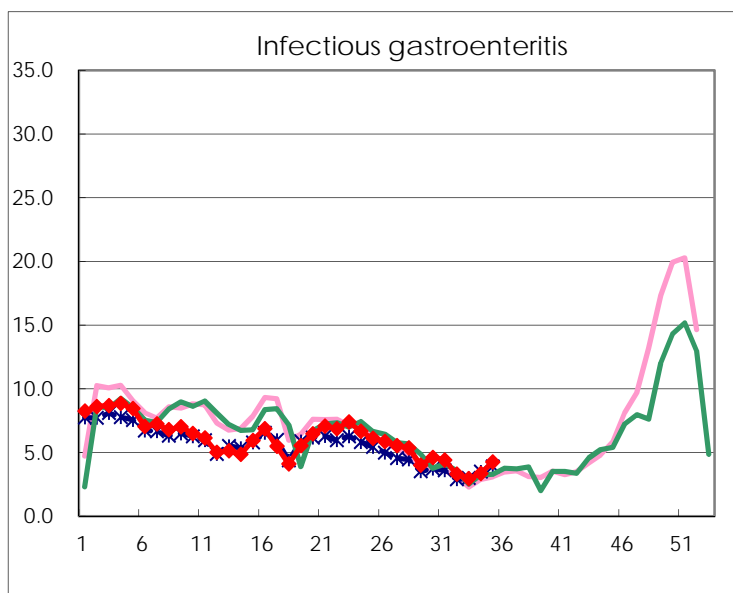
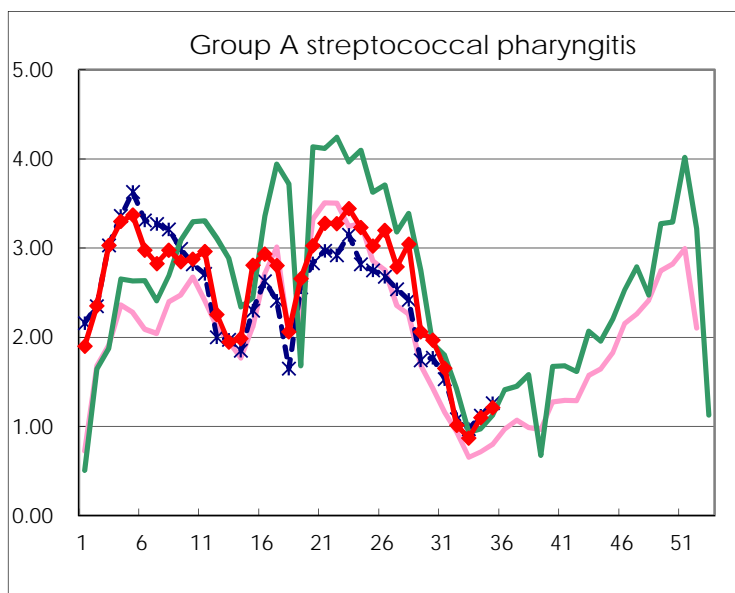
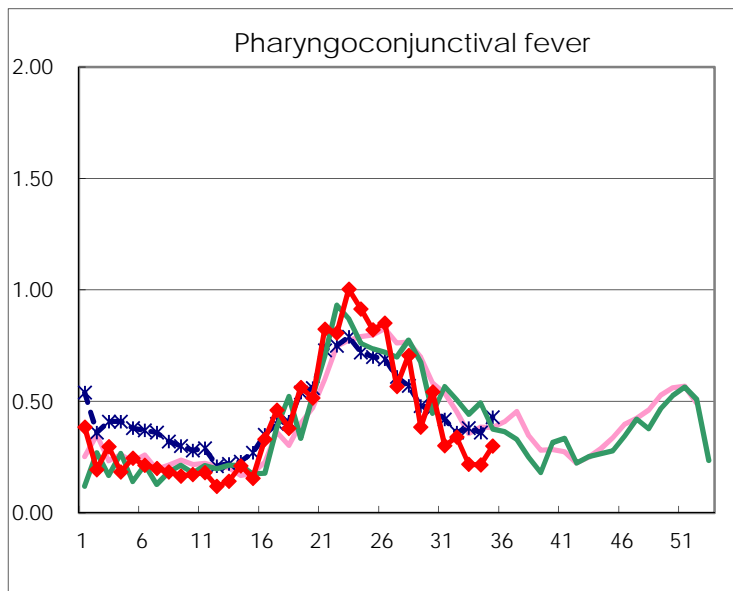
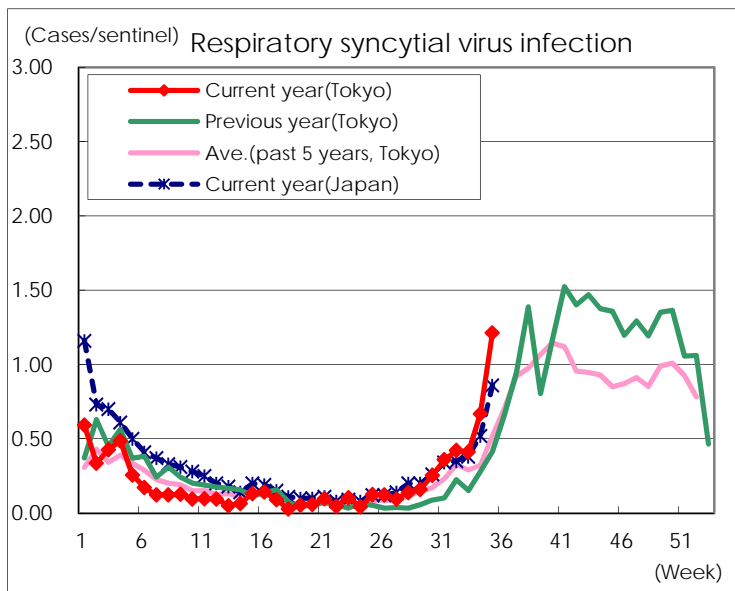
Category	Diseases	Tokyo				Japan		
		32nd	33rd	34th	35th	Cum 2016	35th	Cum 2016
V	Amebiasis		8	6	2	154	16	774
	Viral hepatitis(excluding hepatitis A and E)	2	1	4	1	50	5	185
	CRE infection	4	8	2	2	123	26	964
	Acute encephalitis(excluding JE and WNE)	2	1	1	3	74	9	571
	Cryptosporidiosis						2	8
	Creutzfeldt-Jakob disease					11	6	123
	Severe invasive streptococcal infections(TSLS)		1	4	3	50	4	350
	Acquired immunodeficiency syndrome (AIDS)	9	11	13	11	329	22	954
	Giardiasis	1			1	13		44
	Invasive <i>Haemophilus influenzae</i> disease	2	1			34	1	219
	Invasive meningococcal disease					3	2	31
	Invasive pneumococcal disease	3	5	2	3	248	16	1,841
	Varicella (limited to hospitalized case)		1	1	1	37	5	206
	Congenital rubella syndrome							
	Syphilis	33	39	37	34	1,151	56	2,876
	Disseminated cryptococcosis					10	1	84
	Tetanus				1	4	5	83
	Vancomycin-resistant <i>S. aureus</i> infection							
	Vancomycin-resistant Enterococcus infection			1	1	2	1	37
	Rubella			1		13	1	96
Measles		1		5	11	26	82	
MDRA infection					1		25	

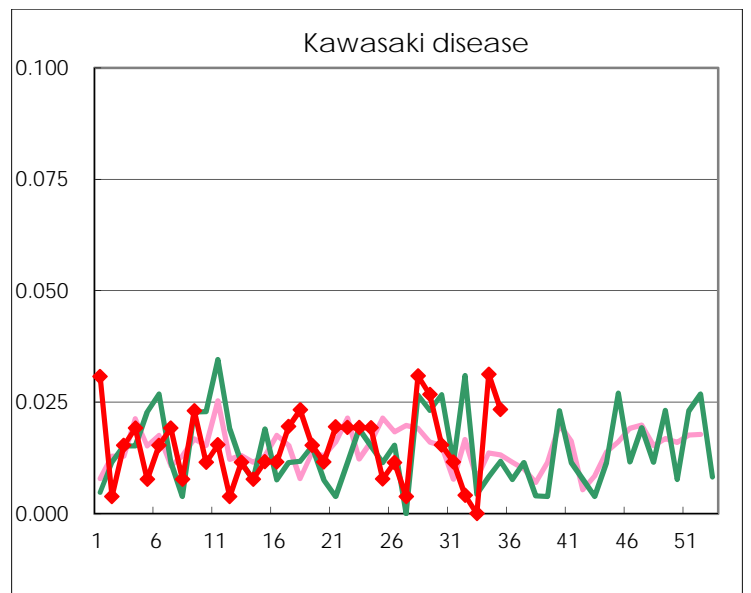
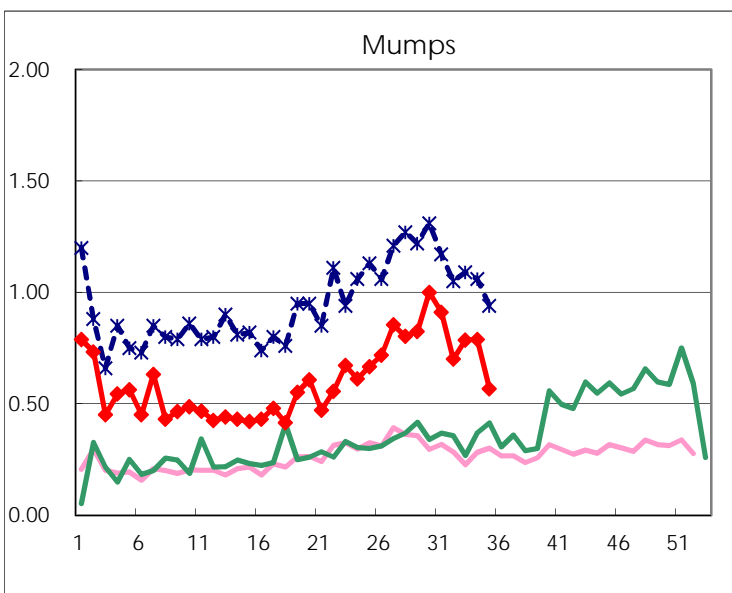
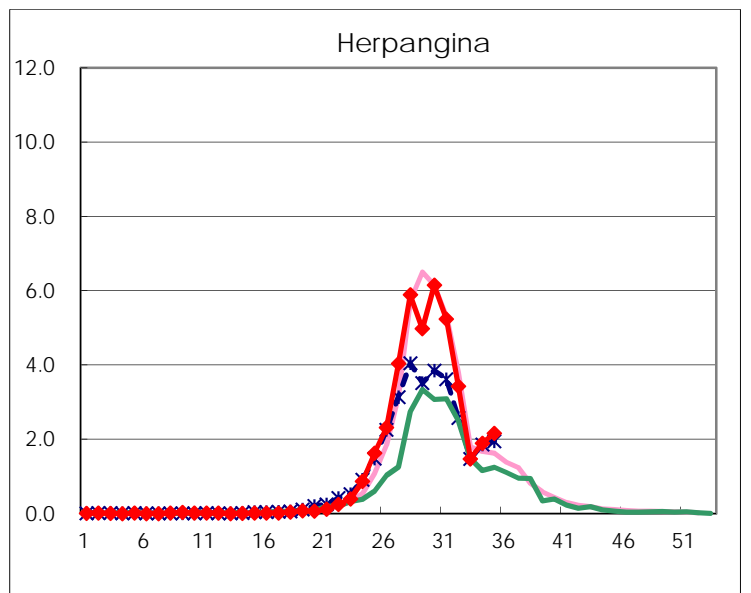
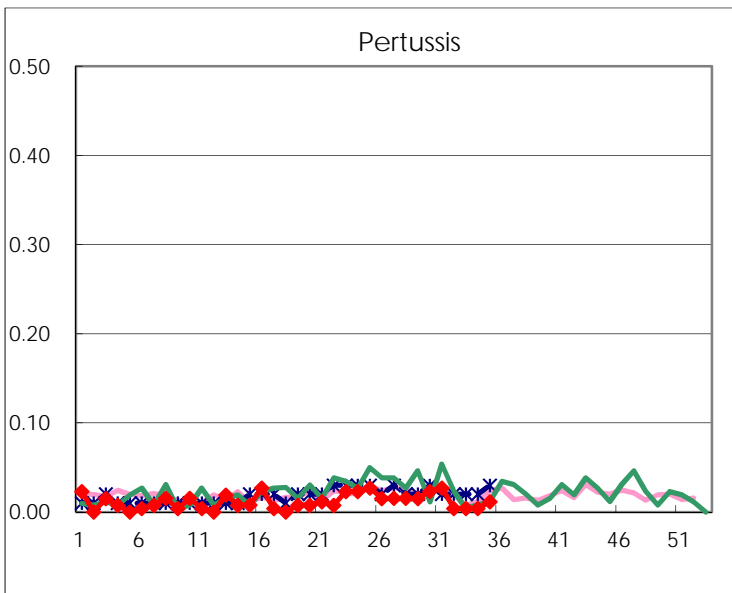
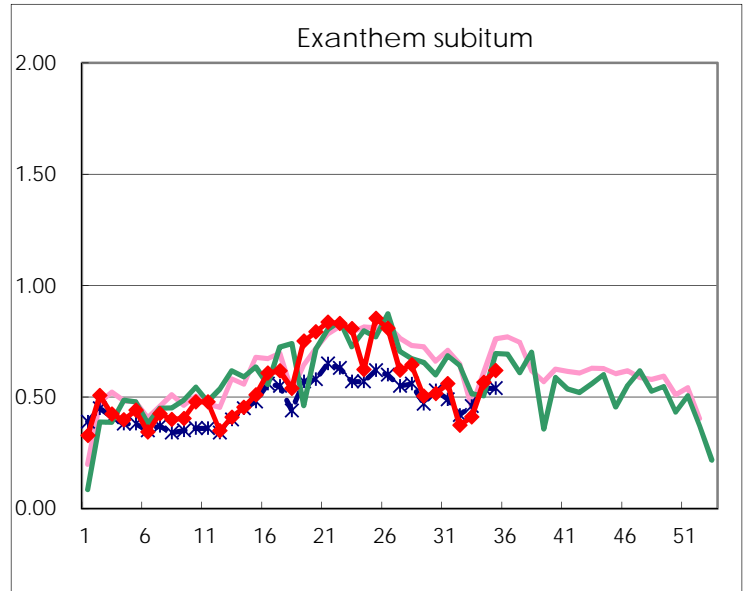
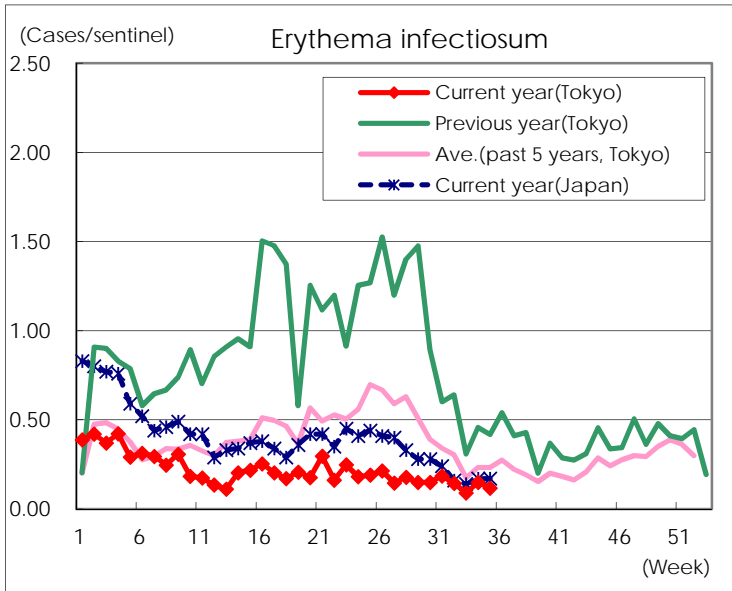
Number of patients with the diseases to be reported
by the designated clinics and hospitals

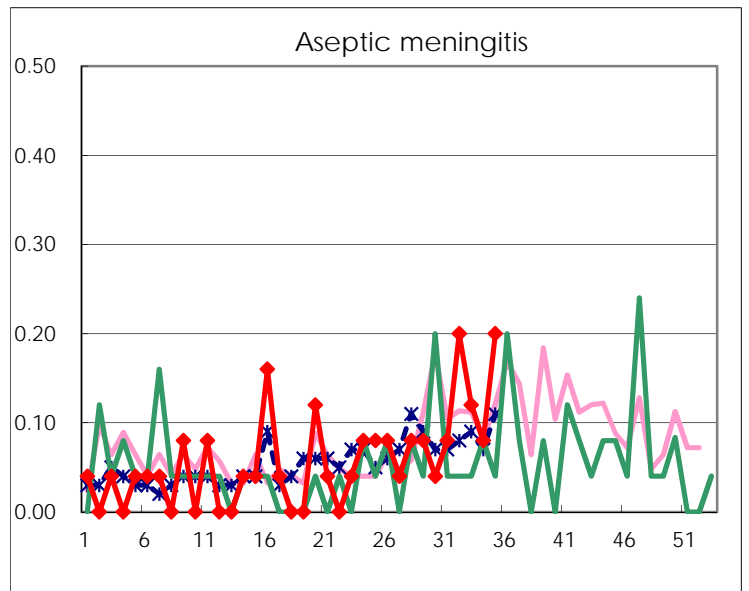
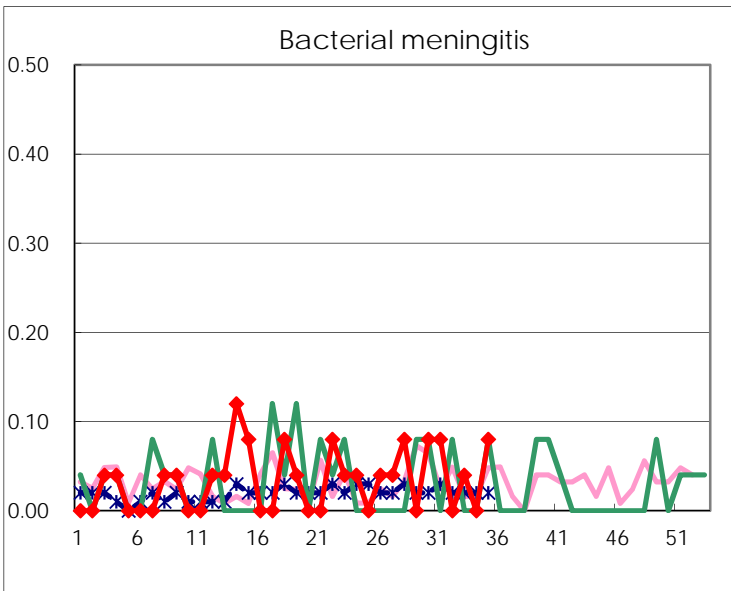
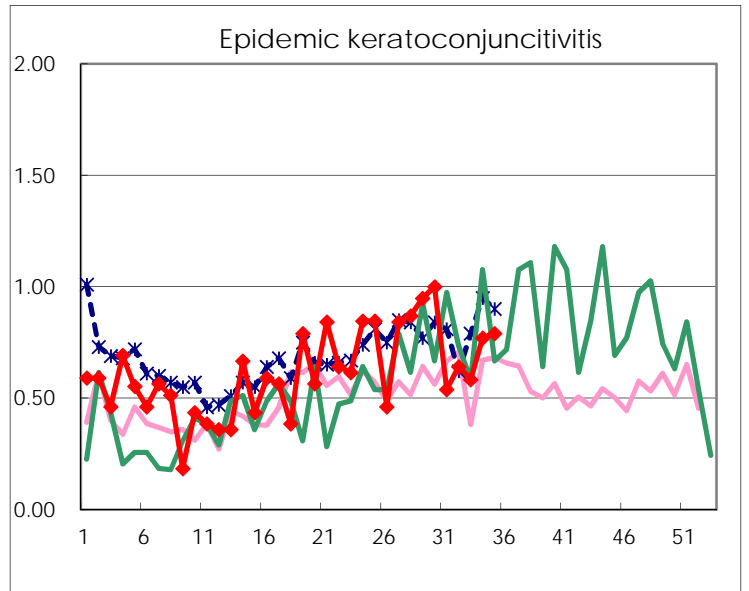
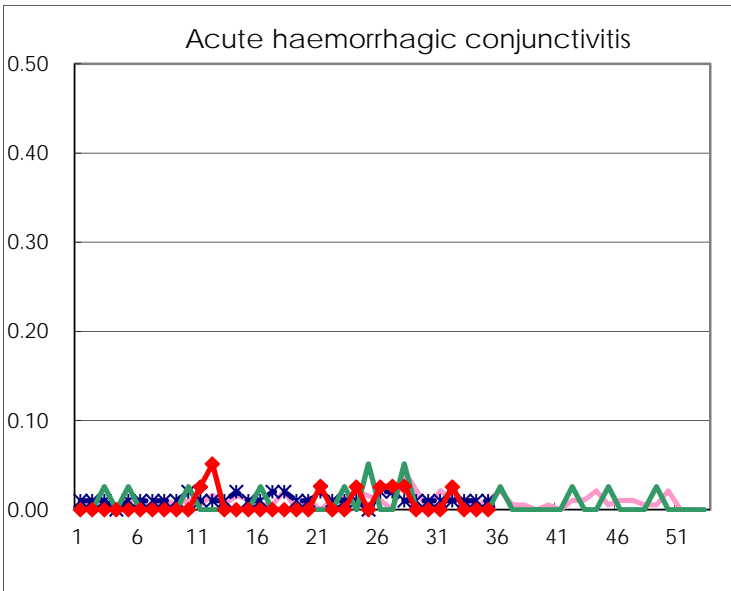
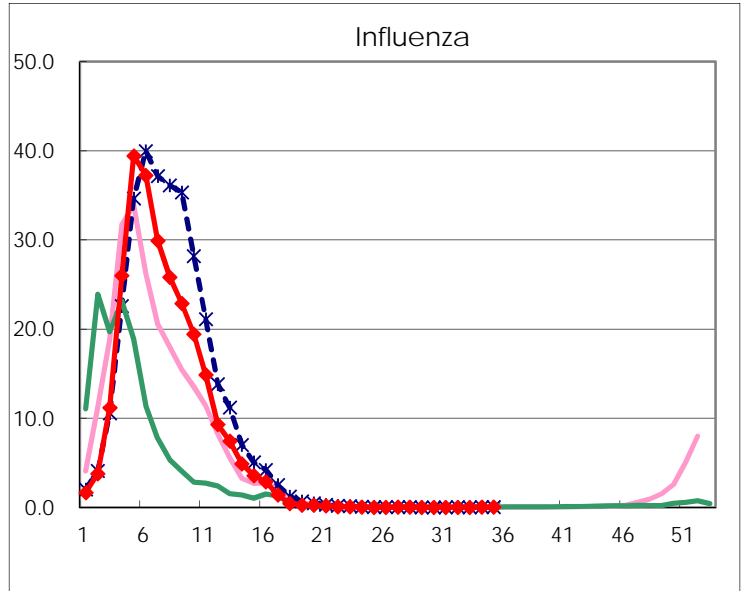
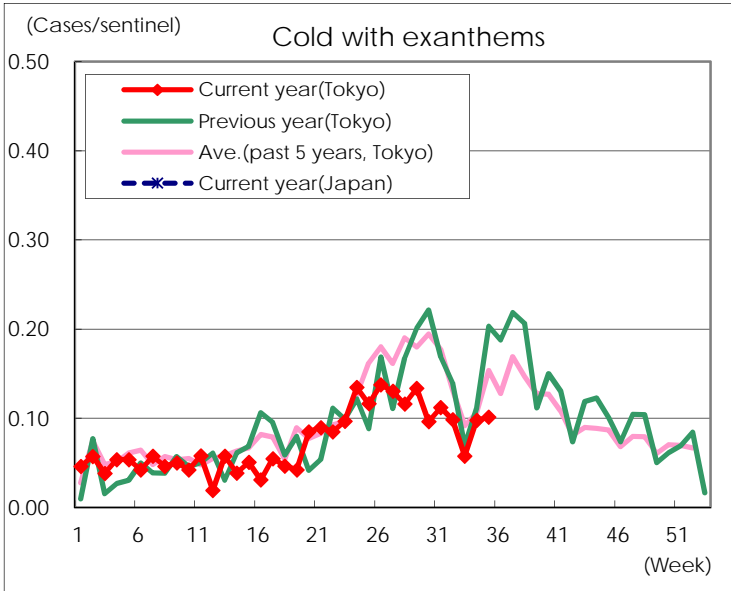
Diseases	Tokyo				
	32nd	33rd	34th	35th	/sentinel
Respiratory syncytial virus infection	103	100	171	312	1.21
Pharyngoconjunctival fever	83	53	55	77	0.30
Group A streptococcal pharyngitis	247	211	281	311	1.21
Infectious gastroenteritis	802	718	855	1,092	4.25
Chickenpox	69	64	63	58	0.23
Hand, foot, and mouth disease	184	129	243	253	0.98
Erythema infectiosum	35	22	38	30	0.12
Exanthem subitum	91	100	145	159	0.62
Pertussis	1	1	1	3	0.01
Herpangina	838	359	486	556	2.16
Mumps	171	191	202	146	0.57
Kawasaki disease	1		8	6	0.02
Cold with exanthems	24	14	25	26	0.10
Influenza	6	4	15	13	0.03
Acute hemorrhagic conjunctivitis	1				
Epidemic keratoconjunctivitis	25	21	30	30	0.79
Bacterial meningitis		1		2	0.08
Aseptic meningitis	5	3	2	5	0.20
Mycoplasma pneumonia	23	26	29	17	0.68
Chlamydial pneumonia (excluding psittacosis)		1			
Infectious gastroenteritis (only by Rotavirus)					
Influenza-Associated Hospitalizations	1			1	0.04

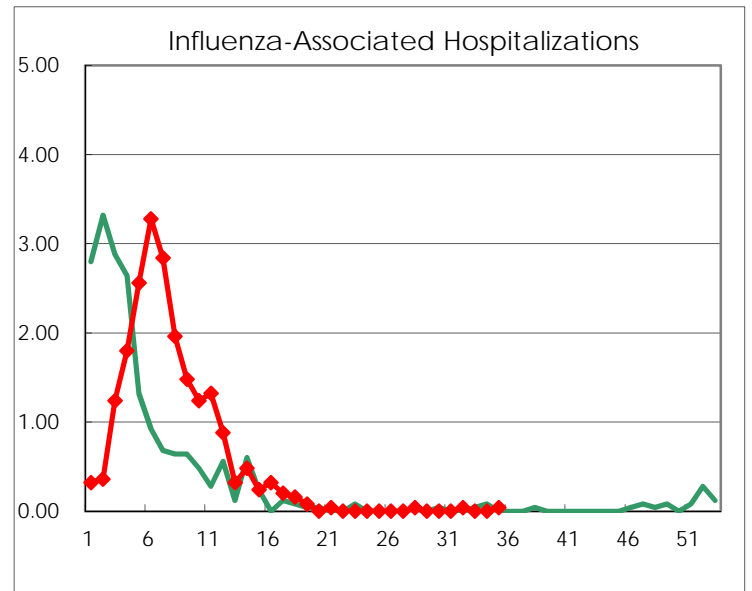
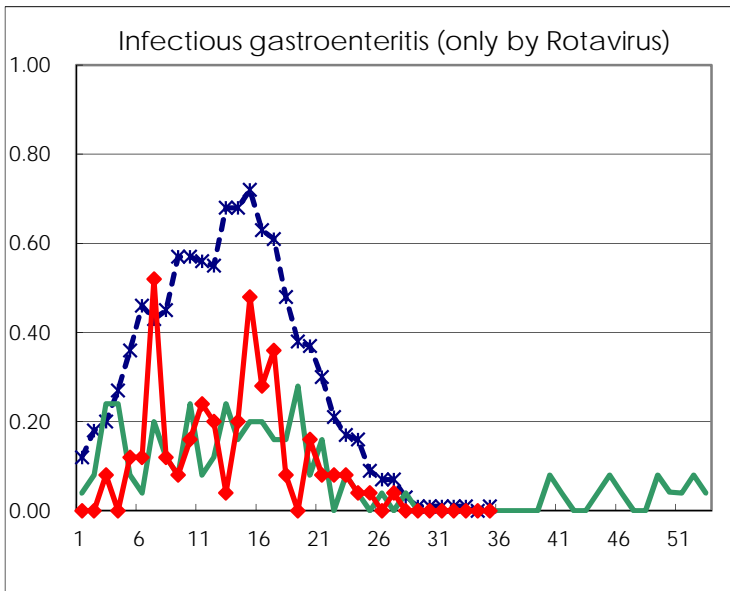
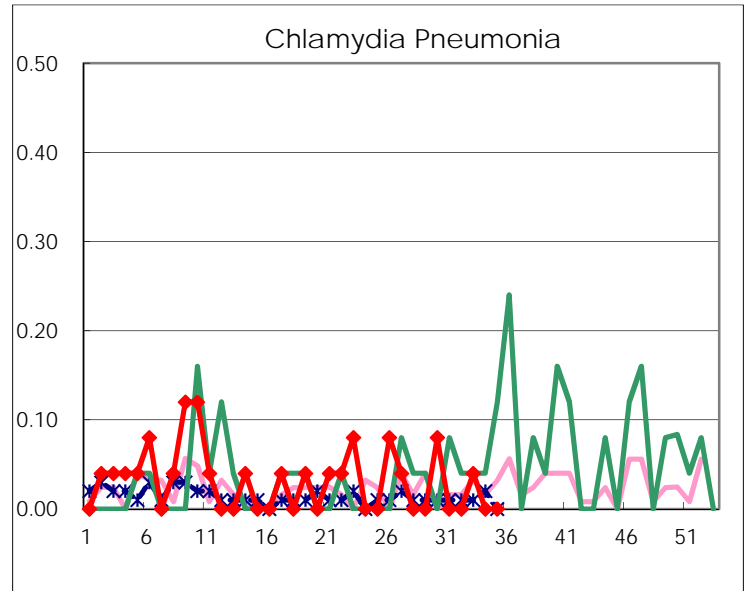
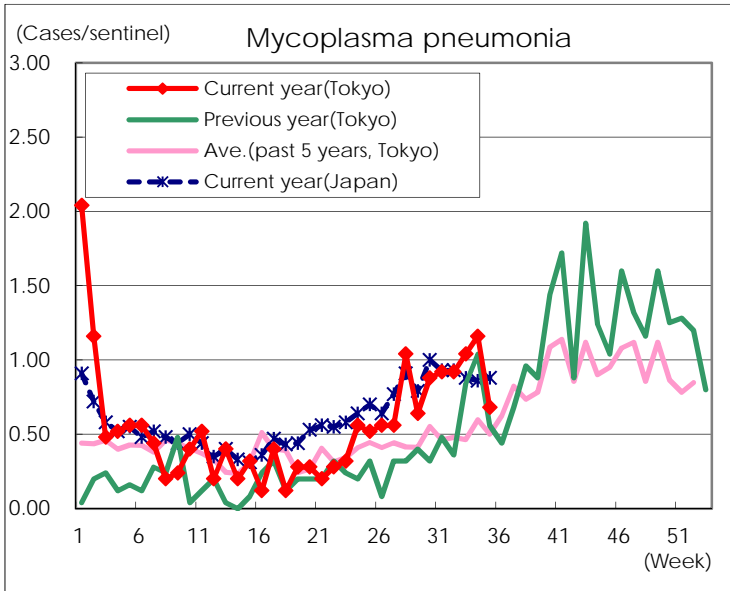
(Blank means 0.)

Disease Trend Graph (weekly reported cases per sentinel in comparison)









Number of sentinel facilities for weekly reporting		
Types of sentinels	Number of sentinels	Sentinels having reported
Pediatric	264	257
Influenza	419	407
Ophthalmic	39	38
Specially-designated	25	25