

29 September 2016 / Number 38

Surveillance System in Tokyo, Japan

The infectious diseases which all physicians must report

All physicians must report to health centers the incidence of the diseases which are shown at page one. Health centers electronically report the individual cases to Tokyo Metropolitan Infectious Disease Surveillance Center.

The infectious diseases required to be reported by the sentinels

The numbers of patients who visit the sentinel clinics or hospitals during a week are reported to health centers in Tokyo. And they electronically report the numbers to Tokyo Metropolitan Infectious Disease Surveillance Center. We have about 500 sentinel clinics and hospitals in Tokyo.

Tokyo Metropolitan Institute of Public Health

TEL:81-3-3363-3213 FAX:81-3-5332-7365

e-mail:www@tokyo-eiken.go.jp

URL:idsc.tokyo-eiken.go.jp/

Number of patients with the diseases which all physicians must report

Category	Diseases	Tokyo					Japan	
		35th	36th	37th	38th	Cum 2016	38th	Cum 2016
I	Ebola hemorrhagic fever							
	Crimean-Congo hemorrhagic fever							
	Smallpox							
	South American hemorrhagic fever							
	Plague							
	Marburg disease							
II	Lassa fever							
	Acute poliomyelitis							
	Tuberculosis	71	67	69	46	2,653	272	17,467
	Diphtheria							
	Severe Acute Respiratory Syndrome(SARS)							
	Middle East Respiratory Syndrome (MERS)							
III	Avian influenza H5N1							
	Avian influenza H7N9							
	Cholera		1			1	1	7
	Shigellosis		1	1		32		96
	Enterohemorrhagic Escherichia coli infection	38	49	31	3	381	77	2,831
	Typhoid fever				2	17	4	37
IV	Paratyphoid fever			1		6		13
	Hepatitis E			1		31		299
	West Nile fever							
	Hepatitis A		1	1		55	2	221
	Echinococcosis							14
	Yellow fever							
	Psittacosis					1		5
	Omsk hemorrhagic fever							
	Relapsing fever							7
	Kyasanur forest disease							
	Q fever							
	Rabies							
	Coccidioidomycosis					2		3
	Monkeypox							
	Zika virus infection			1	1	2	1	9
	Severe Fever with Thrombocytopenia Syndrome							46
	Hemorrhagic fever with renal syndrome							
	Western equine encephalitis							
	Tick-borne encephalitis							1
	Anthrax							
	Chikungunya fever			1		4		9
	Scrub typhus(Tsutsugamushi disease)							94
	Dengue fever	4	4	3	2	69	11	272
	Eastern equine encephalitis							
	Avian influenza (excluding H5N1 and H7N9)							
	Nipah virus infection							
	Japanese spotted fever						4	160
	Japanese encephalitis							
	Hantavirus pulmonary syndrome							
	Herpes B virus infection							
	Glanders							
	Brucellosis					1		2
Venezuelan equine encephalitis								
Hendra virus infection								
Epidemic typhus								
Botulism					1		3	
Malaria		2			15	1	40	
Tularemia								
Lyme disease						1	6	
Lyssavirus infection(excluding rabies)								
Rift valley fever								
Melioidosis								
Legionellosis	3	10	2	2	92	24	1,054	
Leptospirosis	1	1	1		6	2	48	
Rocky mountain spotted fever								

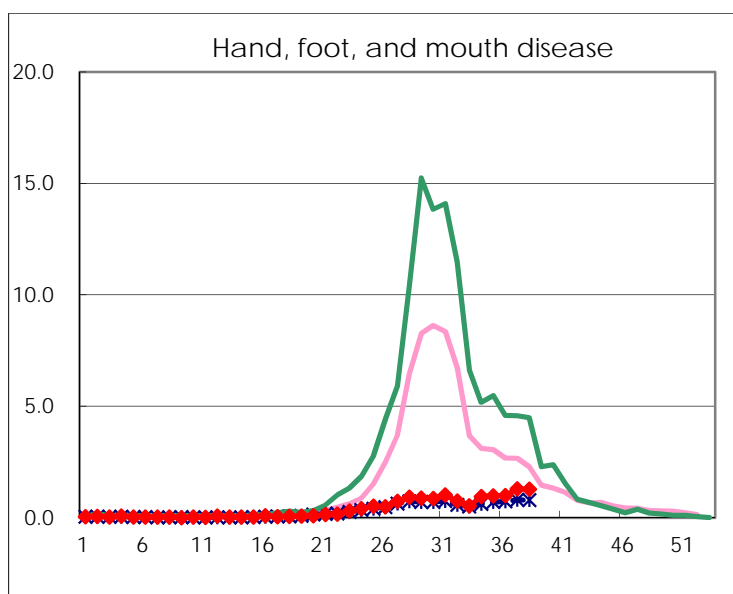
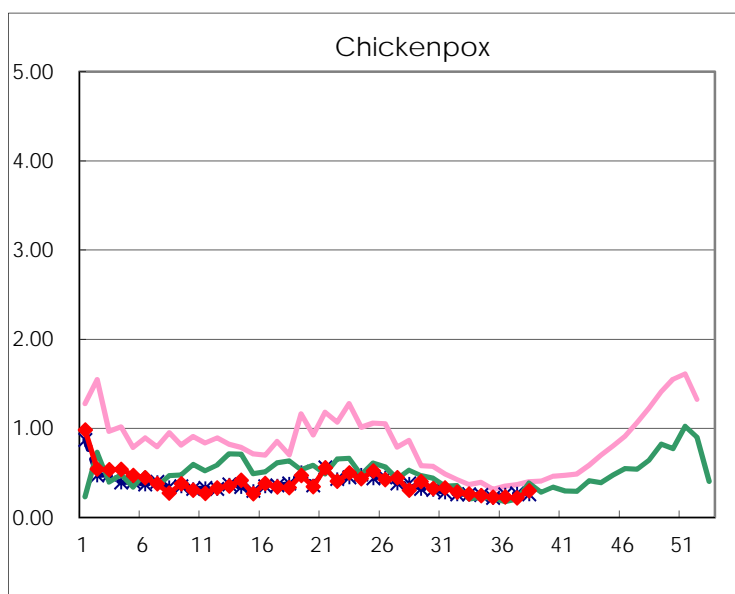
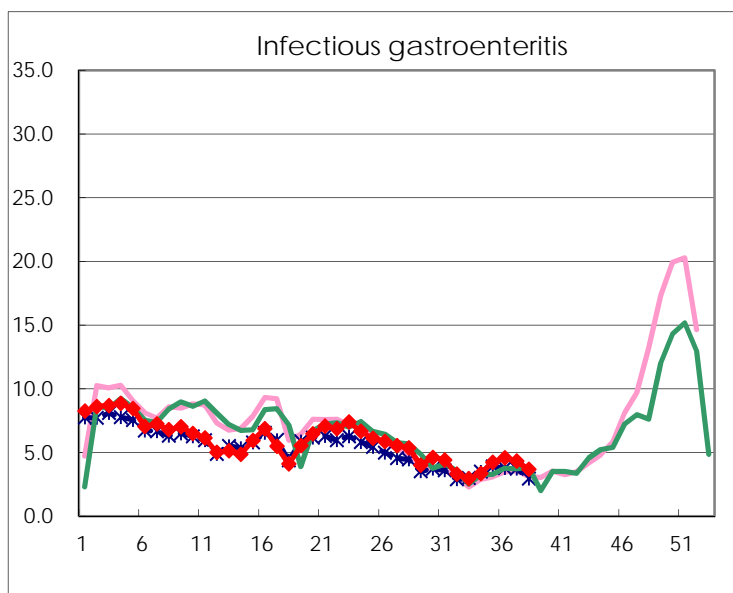
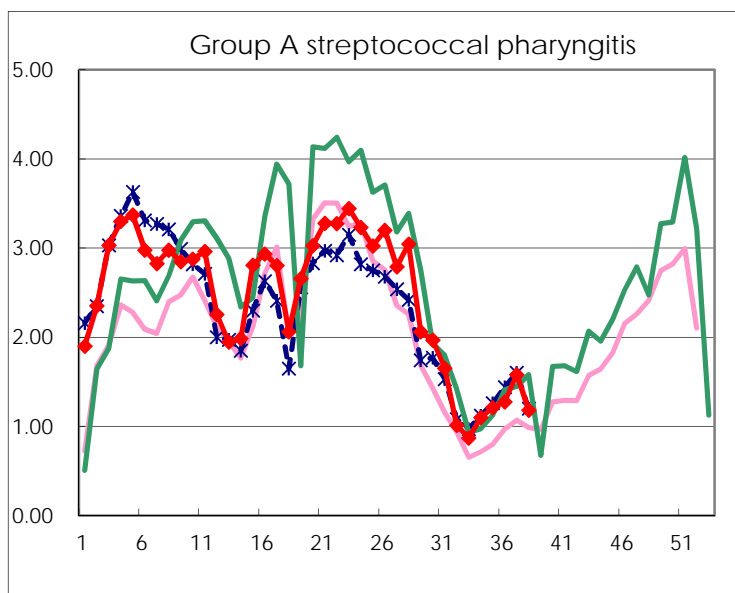
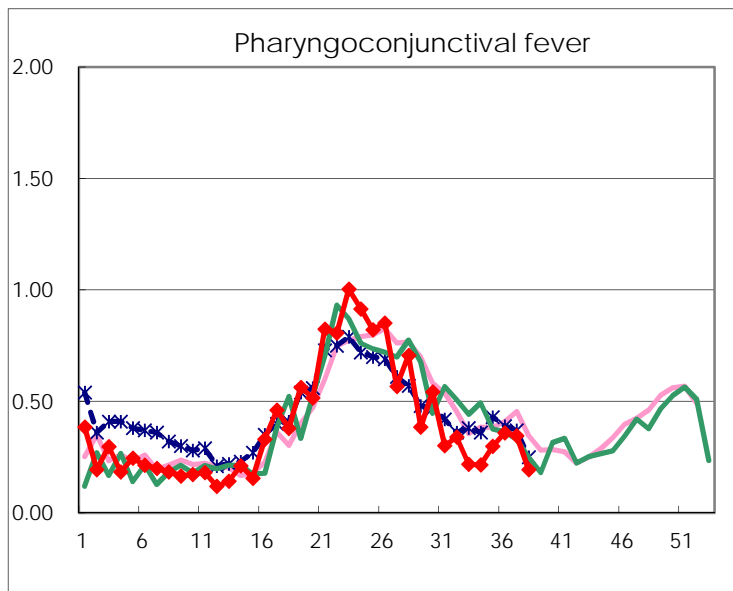
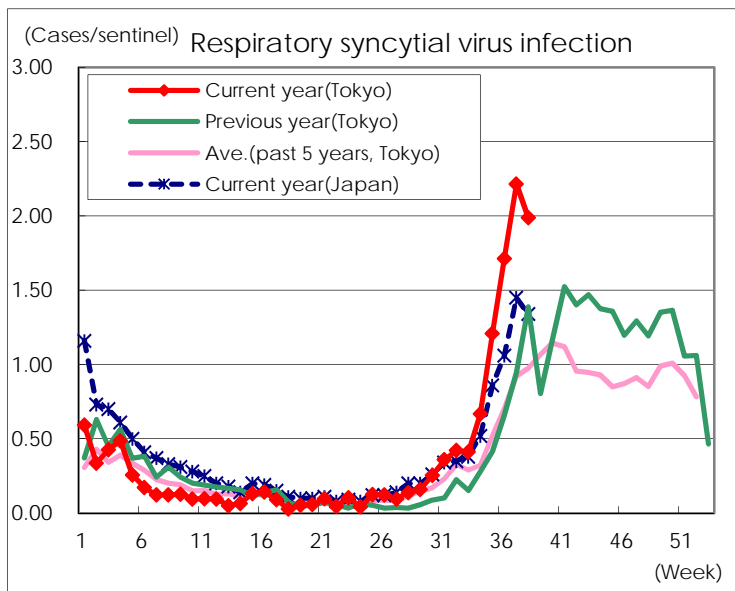
Category	Diseases	Tokyo					Japan	
		35th	36th	37th	38th	Cum 2016	38th	Cum 2016
V	Amebiasis	2	3	4	4	165	10	848
	Viral hepatitis(excluding hepatitis A and E)	1	1			51	2	199
	CRE infection	2	6	9	5	143	18	1,072
	Acute encephalitis(excluding JE and WNE)	3	2	1	1	78	3	604
	Cryptosporidiosis				1	1	1	11
	Creutzfeldt-Jakob disease			2		14	1	131
	Severe invasive streptococcal infections(TSLS)	3	2			52	5	373
	Acquired immunodeficiency syndrome (AIDS)	11	8	11	10	358	12	1,041
	Giardiasis	1				13	2	50
	Invasive <i>Haemophilus influenzae</i> disease		2	2	1	39	2	232
	Invasive meningococcal disease					3		34
	Invasive pneumococcal disease	3	2	1	2	253	10	1,923
	Varicella (limited to hospitalized case)	1				37	2	219
	Congenital rubella syndrome							
	Syphilis	34	39	40	20	1,250	57	3,188
	Disseminated cryptococcosis			1		11	2	90
	Tetanus	1				4	3	93
	Vancomycin-resistant <i>S. aureus</i> infection							
	Vancomycin-resistant Enterococcus infection	1				2		40
	Rubella			1		14	2	104
Measles	5		4	1	16	9	114	
MDRA infection					1	1	29	

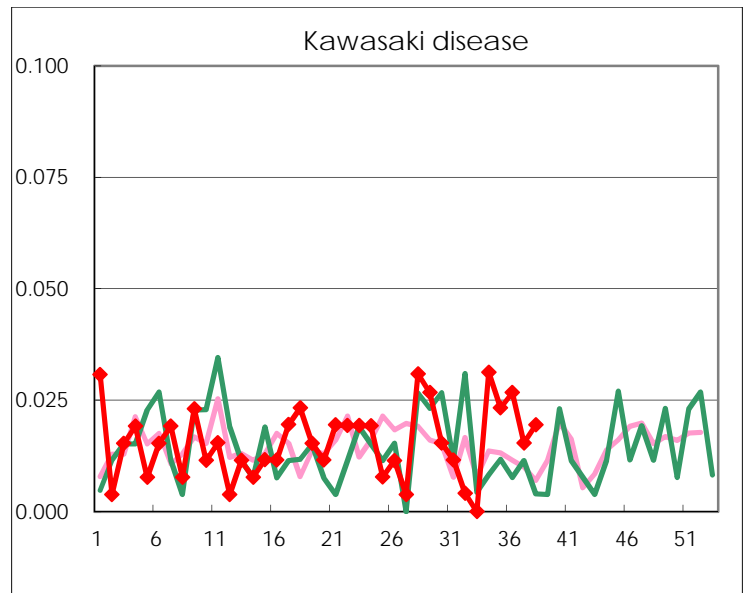
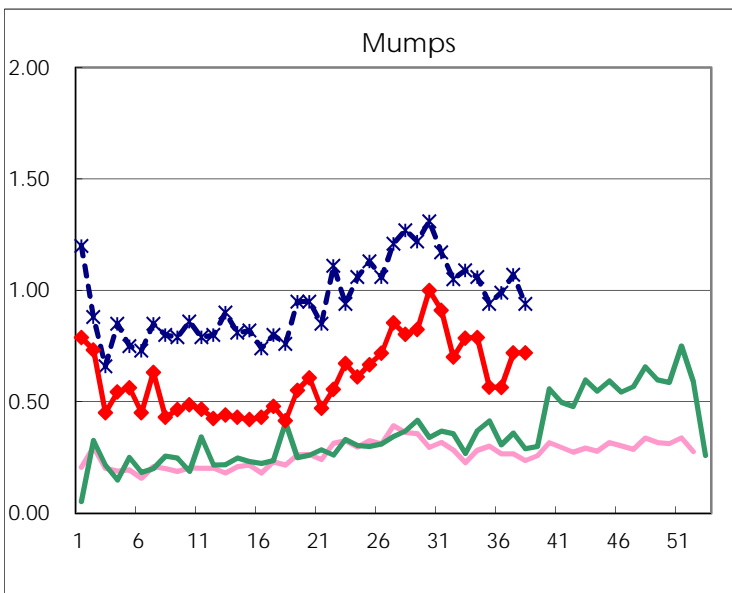
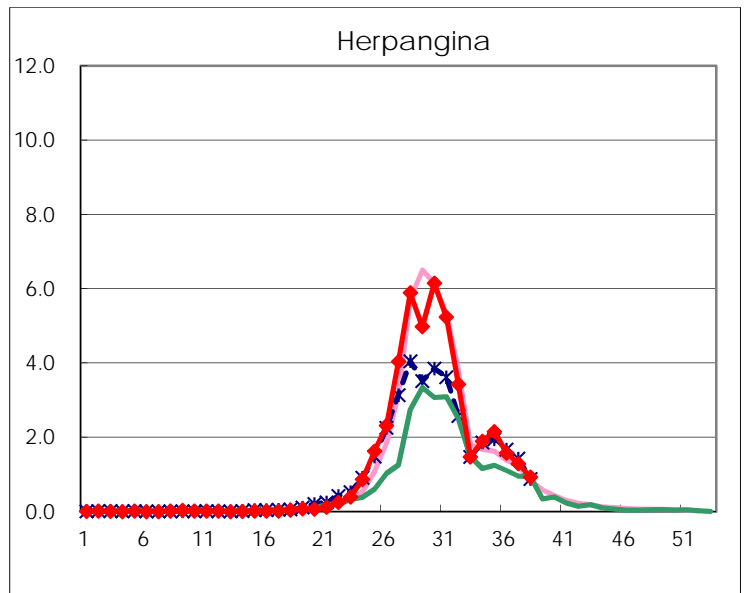
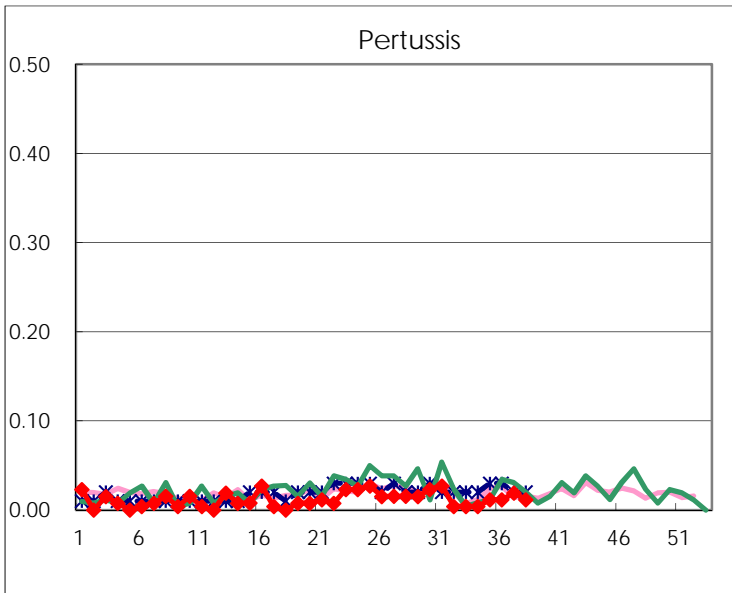
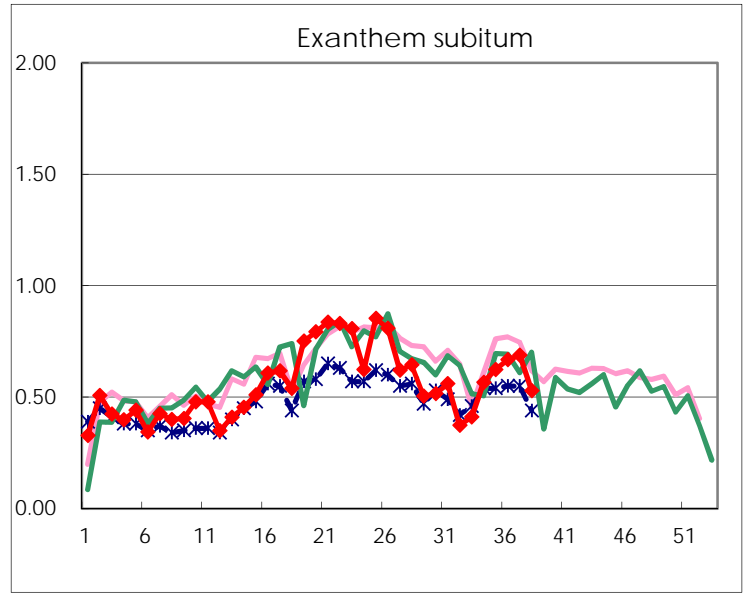
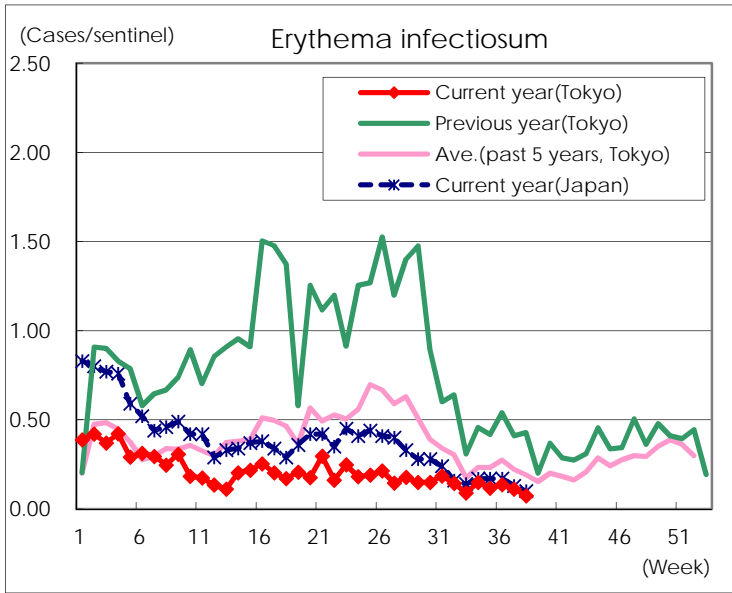
Number of patients with the diseases to be reported
by the designated clinics and hospitals

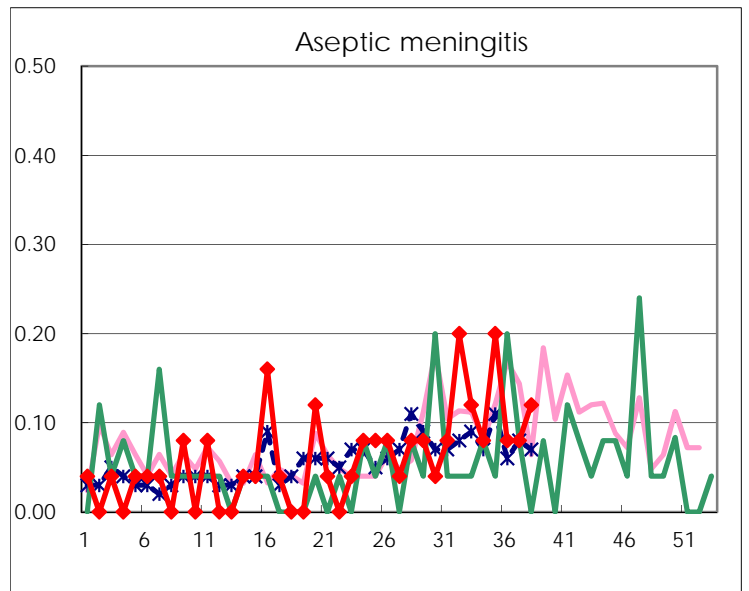
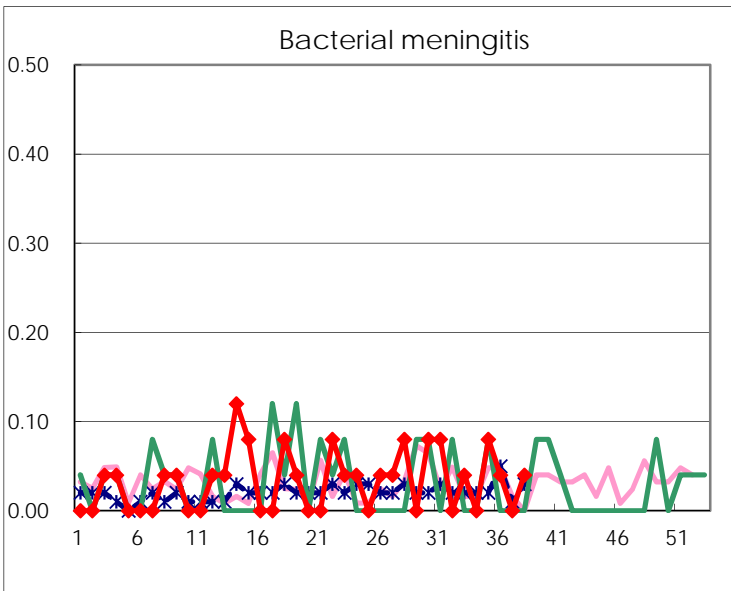
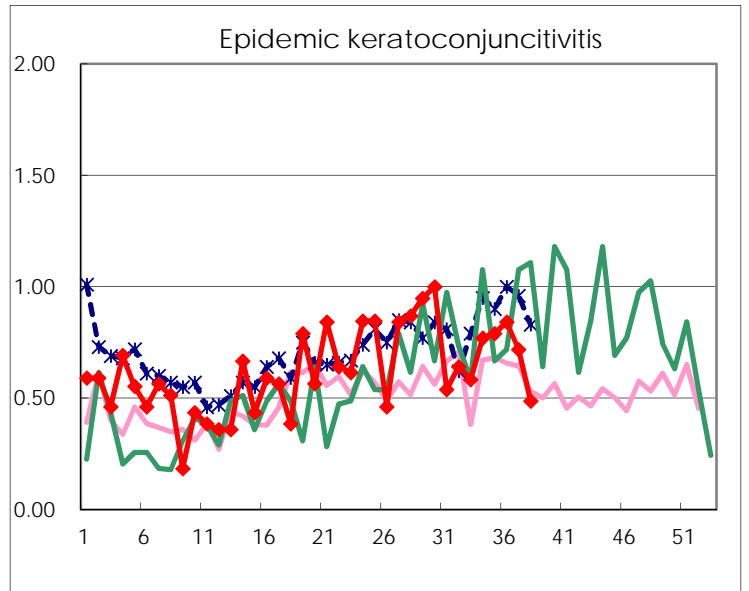
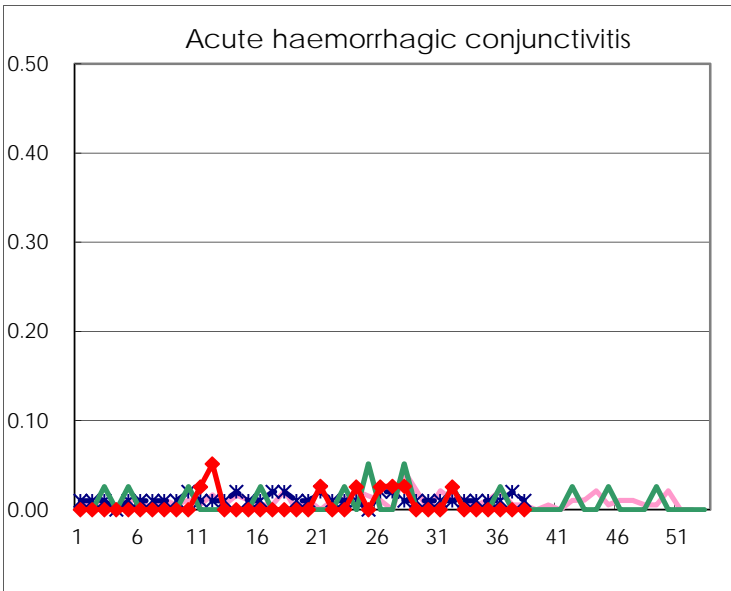
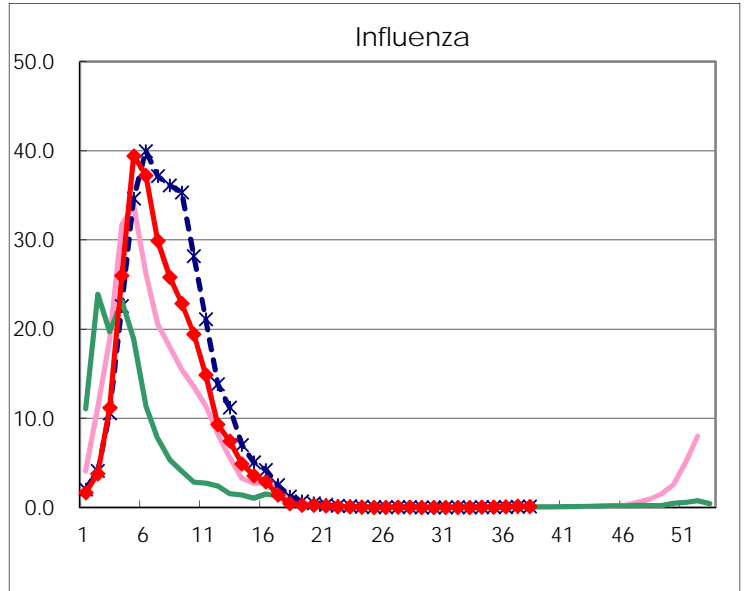
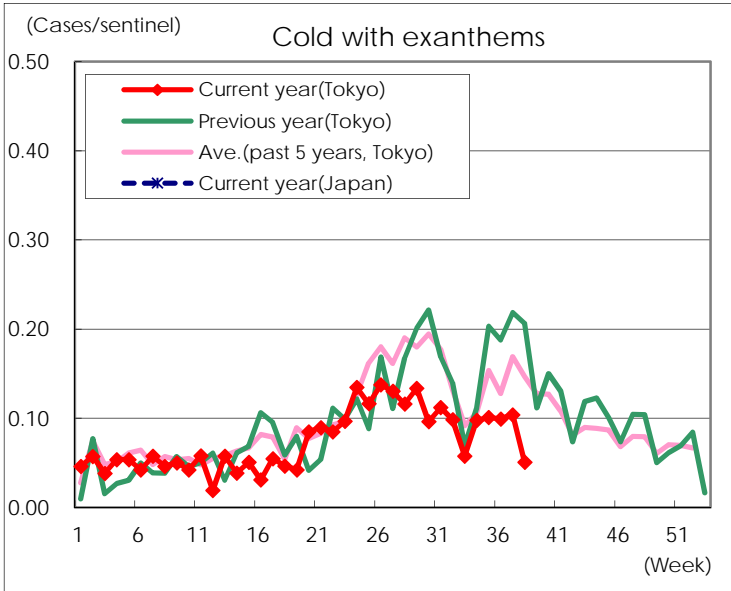
Diseases	Tokyo				
	35th	36th	37th	38th	/sentinel
Respiratory syncytial virus infection	312	449	576	511	1.99
Pharyngoconjunctival fever	77	94	90	50	0.19
Group A streptococcal pharyngitis	312	334	411	304	1.18
Infectious gastroenteritis	1,092	1,198	1,124	941	3.66
Chickenpox	58	60	57	77	0.30
Hand, foot, and mouth disease	253	261	337	328	1.28
Erythema infectiosum	30	36	29	19	0.07
Exanthem subitum	161	175	179	136	0.53
Pertussis	3	3	5	3	0.01
Herpangina	556	414	337	239	0.93
Mumps	146	148	187	185	0.72
Kawasaki disease	6	7	4	5	0.02
Cold with exanthems	26	26	27	13	0.05
Influenza	13	31	54	39	0.10
Acute hemorrhagic conjunctivitis					
Epidemic keratoconjunctivitis	30	32	28	19	0.49
Bacterial meningitis	2	1		1	0.04
Aseptic meningitis	5	2	2	3	0.12
Mycoplasma pneumonia	18	23	23	23	0.92
Chlamydial pneumonia (excluding psittacosis)		1	2		
Infectious gastroenteritis (only by Rotavirus)		1			
Influenza-Associated Hospitalizations	1		2	3	0.12

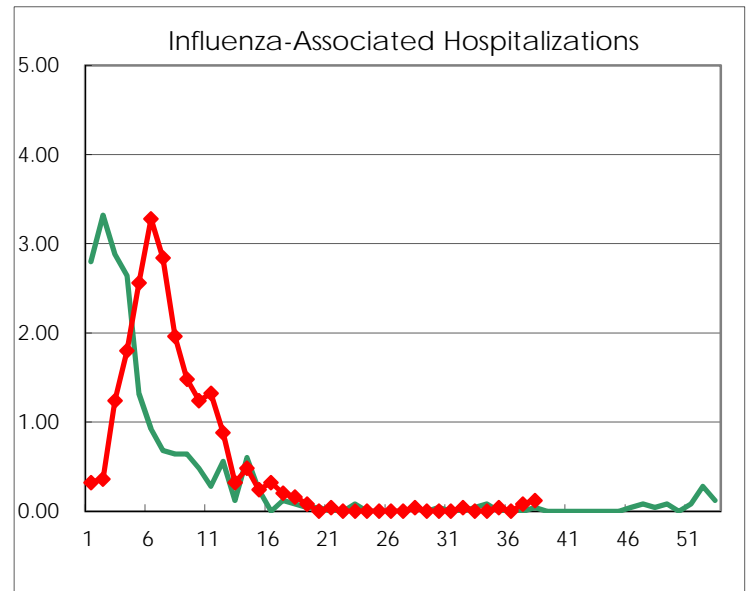
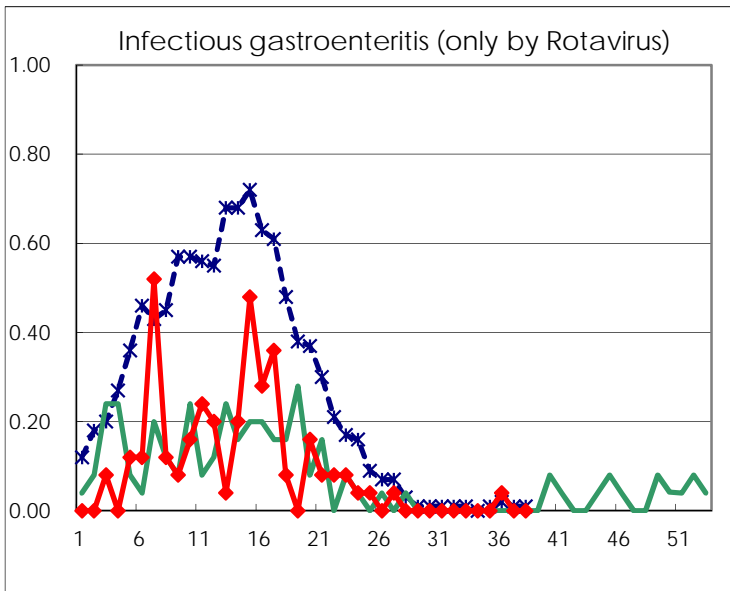
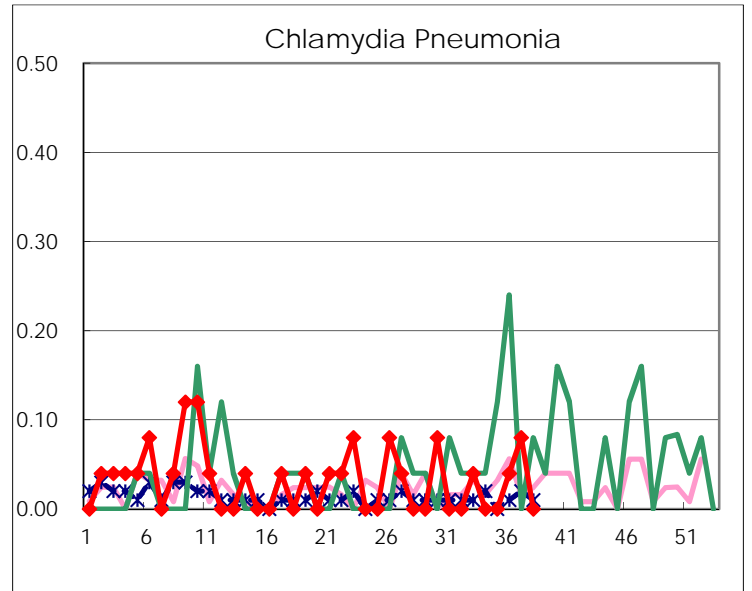
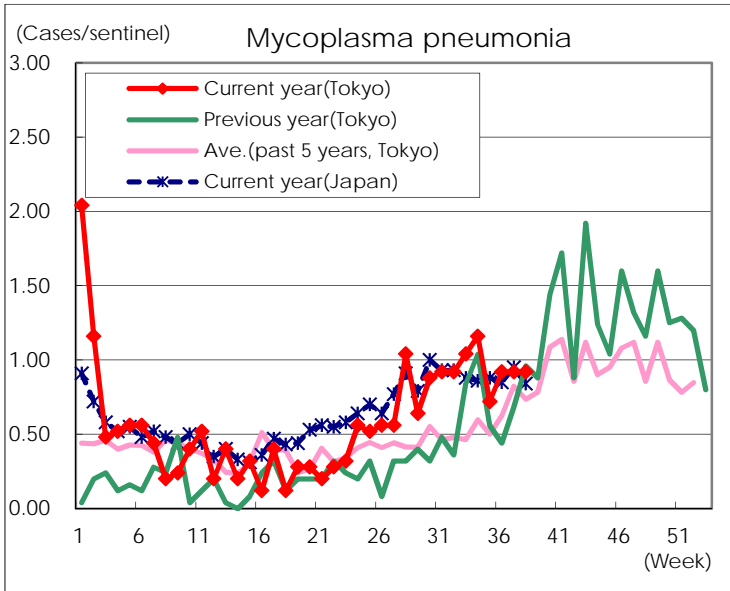
(Blank means 0.)

Disease Trend Graph (weekly reported cases per sentinel in comparison)









Number of sentinel facilities for weekly reporting		
Types of sentinels	Number of sentinels	Sentinels having reported
Pediatric	264	257
Influenza	419	407
Ophthalmic	39	39
Specially-designated	25	25