

13 October 2016 / Number 40

Surveillance System in Tokyo, Japan

The infectious diseases which all physicians must report

All physicians must report to health centers the incidence of the diseases which are shown at page one. Health centers electronically report the individual cases to Tokyo Metropolitan Infectious Disease Surveillance Center.

The infectious diseases required to be reported by the sentinels

The numbers of patients who visit the sentinel clinics or hospitals during a week are reported to health centers in Tokyo. And they electronically report the numbers to Tokyo Metropolitan Infectious Disease Surveillance Center. We have about 500 sentinel clinics and hospitals in Tokyo.

Tokyo Metropolitan Institute of Public Health

TEL:81-3-3363-3213 FAX:81-3-5332-7365

e-mail:www@tokyo-eiken.go.jp

URL:idsc.tokyo-eiken.go.jp/

Number of patients with the diseases which all physicians must report

Category	Diseases	Tokyo					Japan	
		37th	38th	39th	40th	Cum 2016	40th	Cum 2016
I	Ebola hemorrhagic fever							
	Crimean-Congo hemorrhagic fever							
	Smallpox							
	South American hemorrhagic fever							
	Plague							
	Marburg disease							
	Lassa fever							
II	Acute poliomyelitis							
	Tuberculosis	75	52	88	54	2,815	355	18,457
	Diphtheria							
	Severe Acute Respiratory Syndrome(SARS)							
	Middle East Respiratory Syndrome (MERS)							
	Avian influenza H5N1							
	Avian influenza H7N9							
III	Cholera					1		8
	Shigellosis	1		1		33	4	101
	Enterohemorrhagic Escherichia coli infection	31	3	11	3	395	65	2,997
	Typhoid fever		2			17	5	46
	Paratyphoid fever	1				6		14
IV	Hepatitis E	1				31	4	308
	West Nile fever							
	Hepatitis A	1		1	1	57	4	229
	Echinococcosis							15
	Yellow fever							
	Psittacosis					1		5
	Omsk hemorrhagic fever							
	Relapsing fever							7
	Kyasanur forest disease							
	Q fever							
	Rabies							
	Coccidioidomycosis					2		3
	Monkeypox							
	Zika virus infection	1	1			2		9
	Severe Fever with Thrombocytopenia Syndrome							46
	Hemorrhagic fever with renal syndrome							
	Western equine encephalitis							
	Tick-borne encephalitis							1
	Anthrax							
	Chikungunya fever	1				4	1	12
	Scrub typhus(Tsutsugamushi disease)						1	98
	Dengue fever	3	2	3	5	77	9	289
	Eastern equine encephalitis							
	Avian influenza (excluding H5N1 and H7N9)							
	Nipah virus infection							
	Japanese spotted fever						8	193
	Japanese encephalitis							4
	Hantavirus pulmonary syndrome							
	Herpes B virus infection							
	Glanders							
	Brucellosis					1		2
	Venezuelan equine encephalitis							
Hendra virus infection								
Epidemic typhus								
Botulism					1		4	
Malaria				1	16	3	43	
Tularemia								
Lyme disease						1	7	
Lyssavirus infection(excluding rabies)								
Rift valley fever								
Melioidosis								
Legionellosis	2	2	7	7	106	65	1,193	
Leptospirosis	1			1	7	2	58	
Rocky mountain spotted fever								

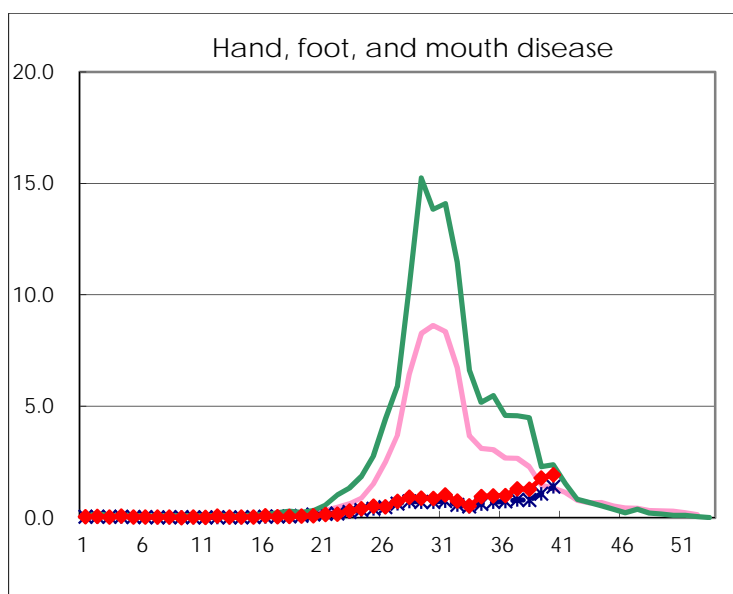
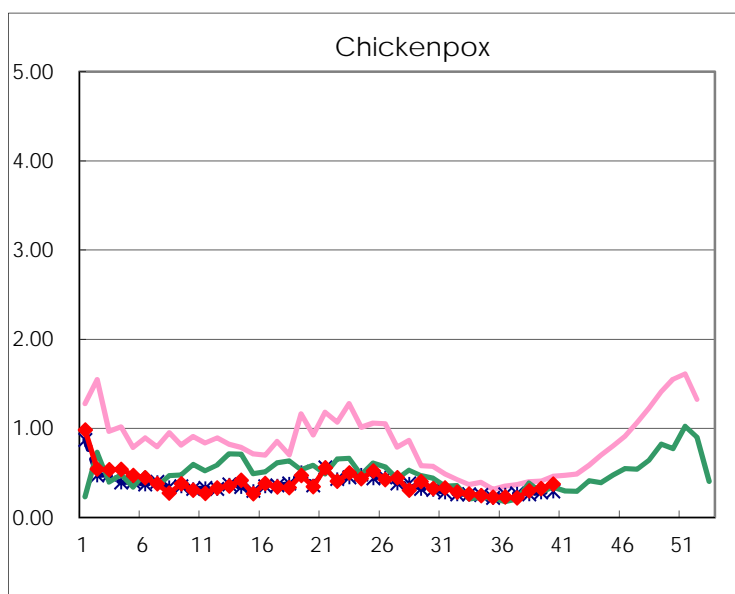
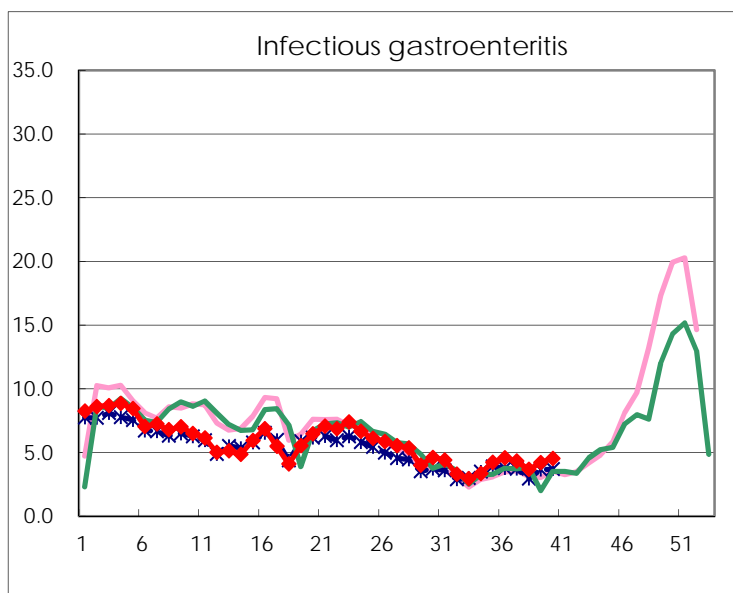
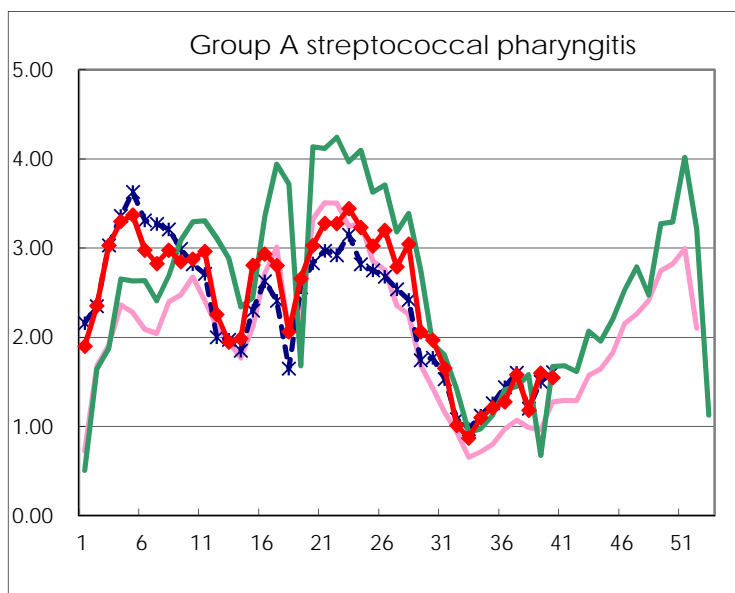
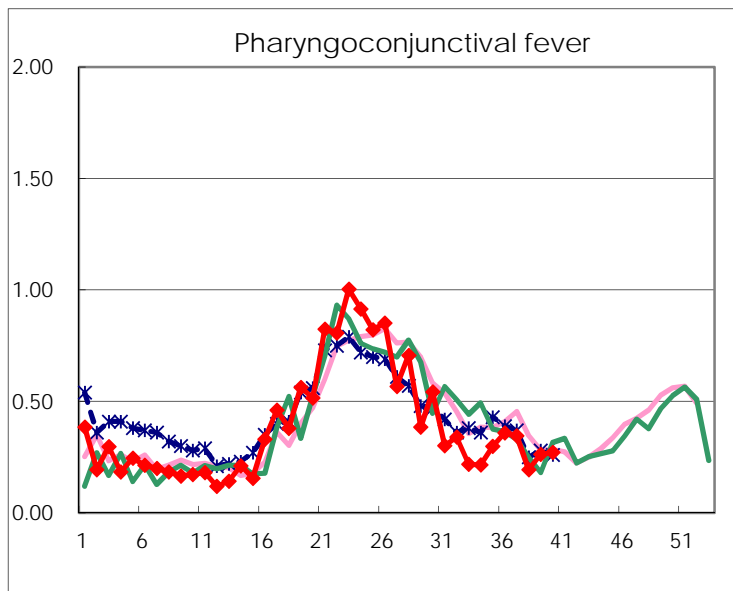
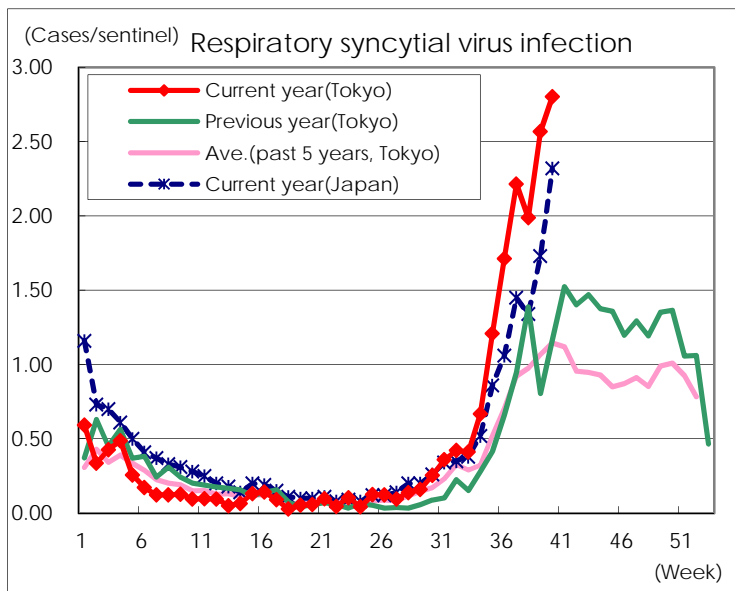
Category	Diseases	Tokyo					Japan	
		37th	38th	39th	40th	Cum 2016	40th	Cum 2016
V	Amebiasis	4	4	5	7	177	9	886
	Viral hepatitis(excluding hepatitis A and E)			2	1	55	4	214
	CRE infection	9	5	4	5	152	16	1,143
	Acute encephalitis(excluding JE and WNE)	1	1		1	79	5	619
	Cryptosporidiosis		1			1		11
	Creutzfeldt-Jakob disease	2				14	1	139
	Severe invasive streptococcal infections(TSLS)	1		2	1	56	6	392
	Acquired immunodeficiency syndrome (AIDS)	11	10	5	14	377	21	1,114
	Giardiasis			2		15	2	54
	Invasive <i>Haemophilus influenzae</i> disease	2	1			39	2	241
	Invasive meningococcal disease					3	1	36
	Invasive pneumococcal disease	2	2	3	4	261	12	1,969
	Varicella (limited to hospitalized case)			1	3	41	1	230
	Congenital rubella syndrome							
	Syphilis	40	20	35	41	1,326	69	3,388
	Disseminated cryptococcosis	1		1	1	13	2	101
	Tetanus					4	1	100
	Vancomycin-resistant <i>S. aureus</i> infection							
	Vancomycin-resistant Enterococcus infection					2		43
	Rubella	1		1		15	4	111
Measles	4	1	2	2	20	5	144	
MDRA infection					1		31	

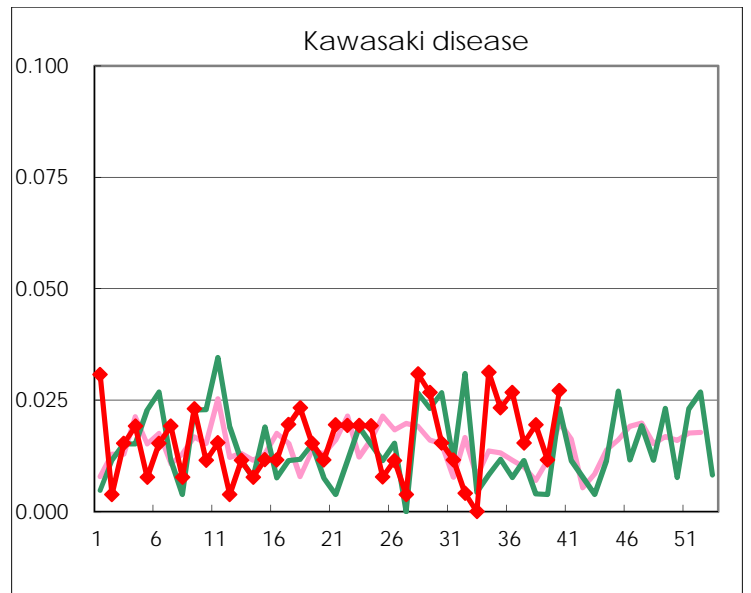
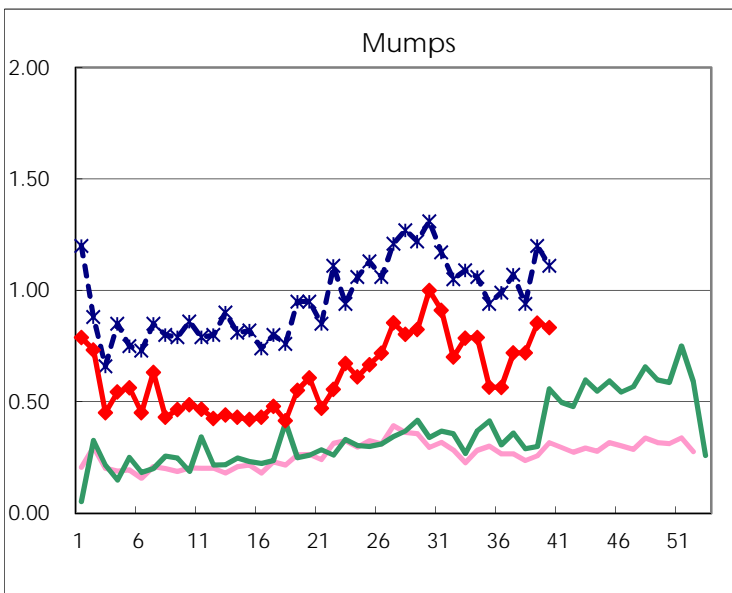
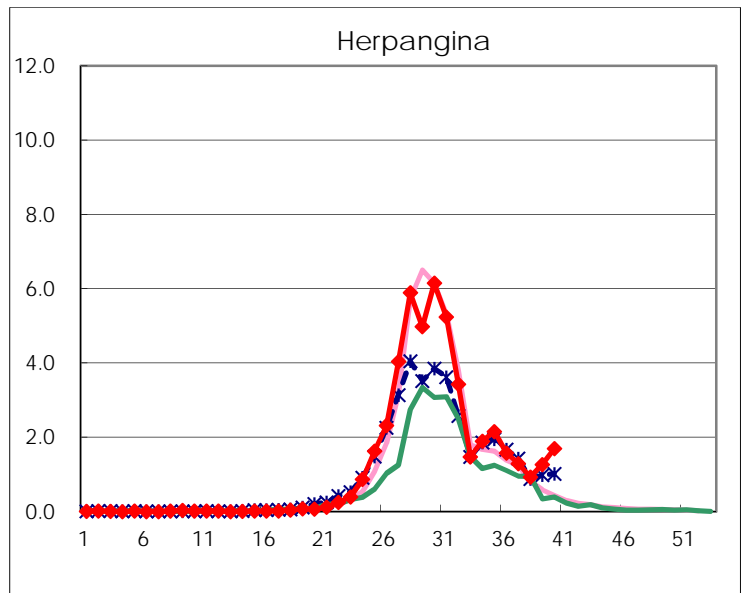
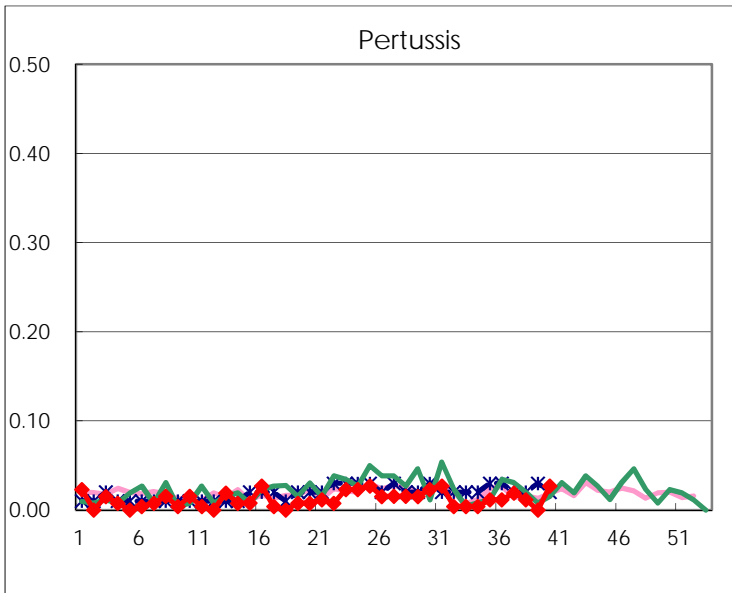
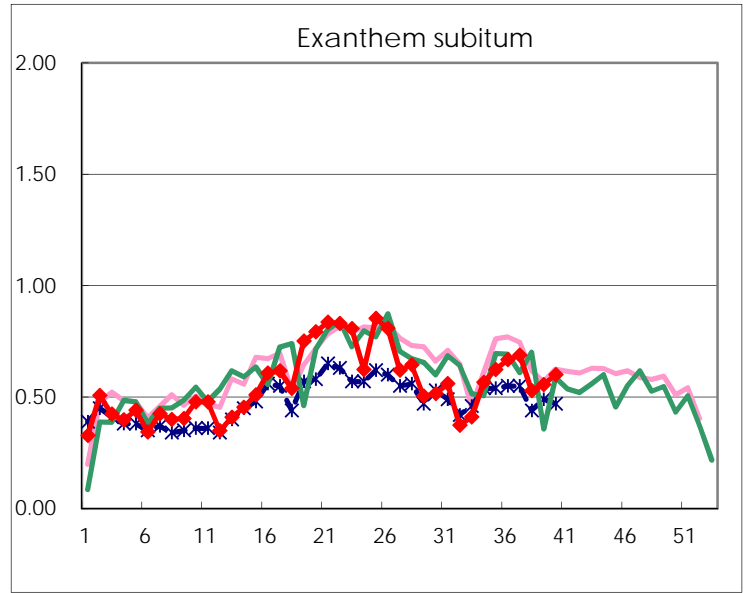
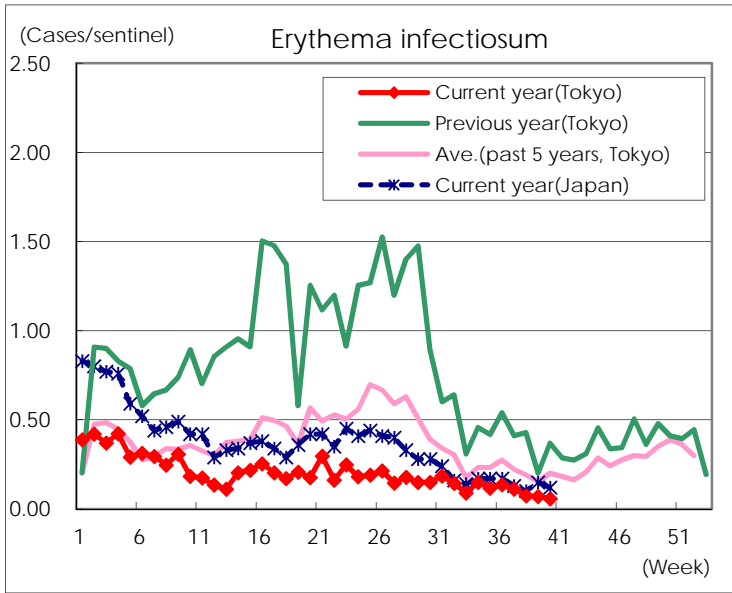
Number of patients with the diseases to be reported
by the designated clinics and hospitals

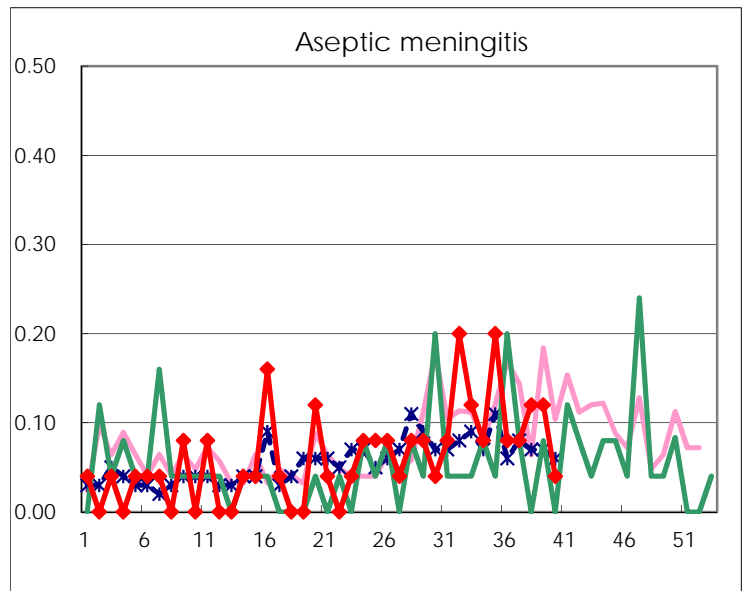
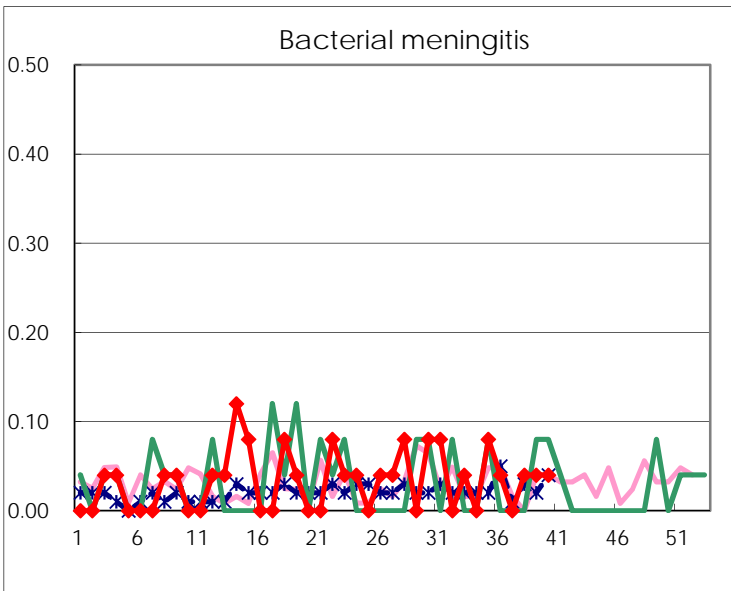
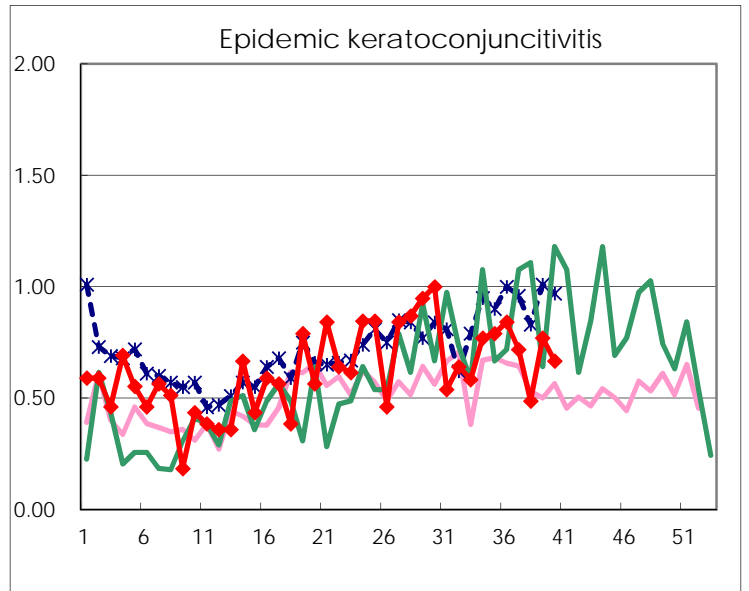
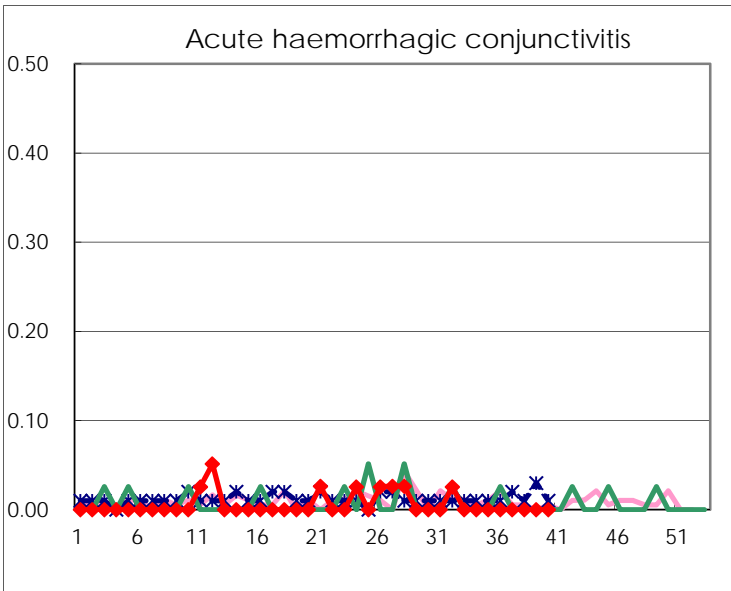
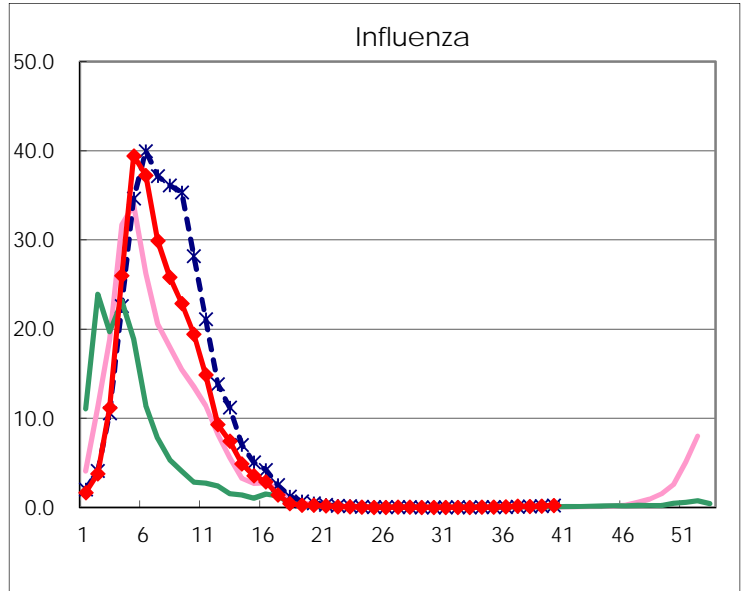
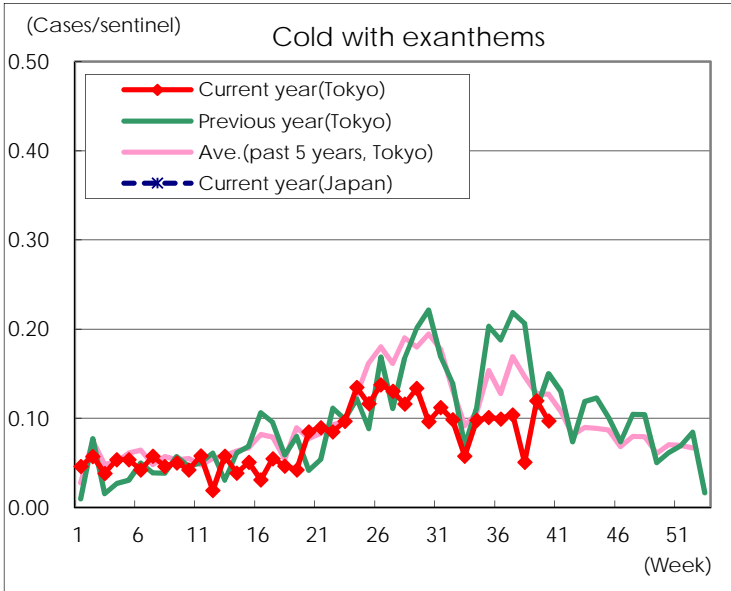
Diseases	Tokyo				
	37th	38th	39th	40th	/sentinel
Respiratory syncytial virus infection	576	511	665	723	2.80
Pharyngoconjunctival fever	90	50	68	70	0.27
Group A streptococcal pharyngitis	411	304	414	399	1.55
Infectious gastroenteritis	1,124	941	1,087	1,170	4.53
Chickenpox	57	77	84	96	0.37
Hand, foot, and mouth disease	337	328	461	498	1.93
Erythema infectiosum	29	19	18	15	0.06
Exanthem subitum	179	136	144	155	0.60
Pertussis	5	3		7	0.03
Herpangina	337	239	329	438	1.70
Mumps	187	185	221	215	0.83
Kawasaki disease	4	5	3	7	0.03
Cold with exanthems	27	13	31	25	0.10
Influenza	54	39	63	96	0.23
Acute hemorrhagic conjunctivitis					
Epidemic keratoconjunctivitis	28	19	30	26	0.67
Bacterial meningitis		1	1	1	0.04
Aseptic meningitis	2	3	3	1	0.04
Mycoplasma pneumonia	23	23	28	53	2.12
Chlamydial pneumonia (excluding psittacosis)	2		2	3	0.12
Infectious gastroenteritis (only by Rotavirus)				2	0.08
Influenza-Associated Hospitalizations	2	3	1	2	0.08

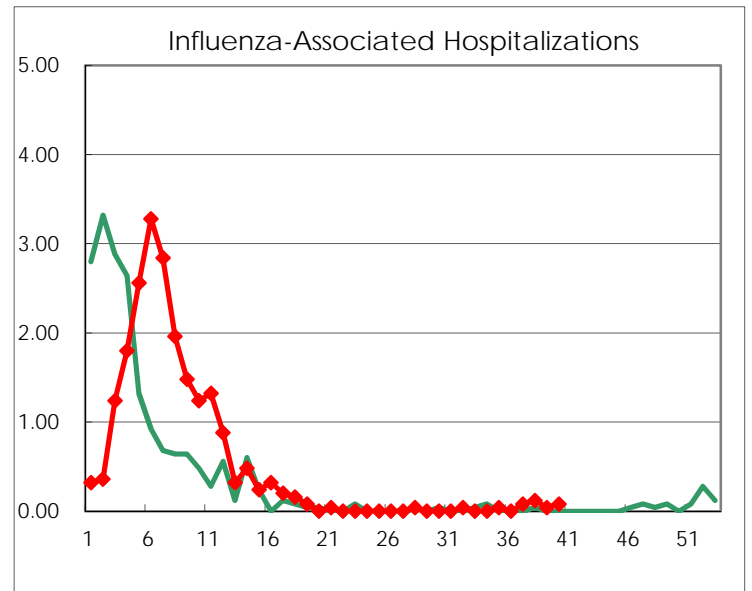
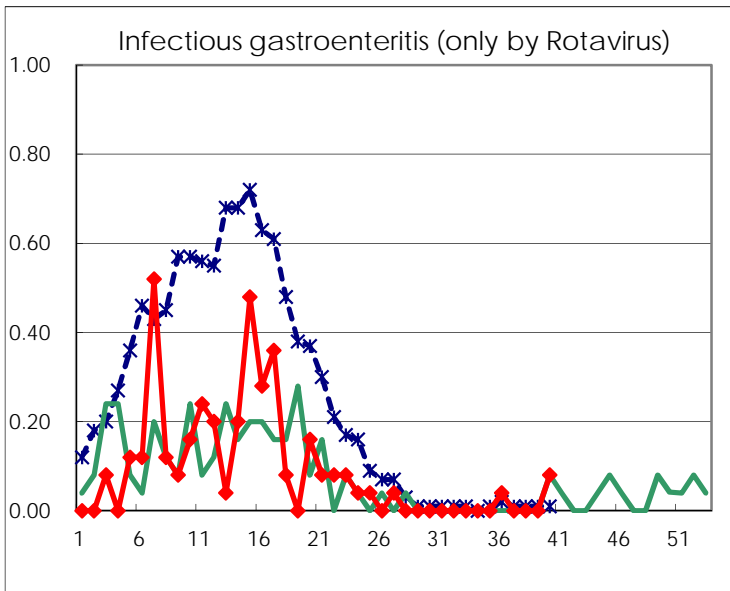
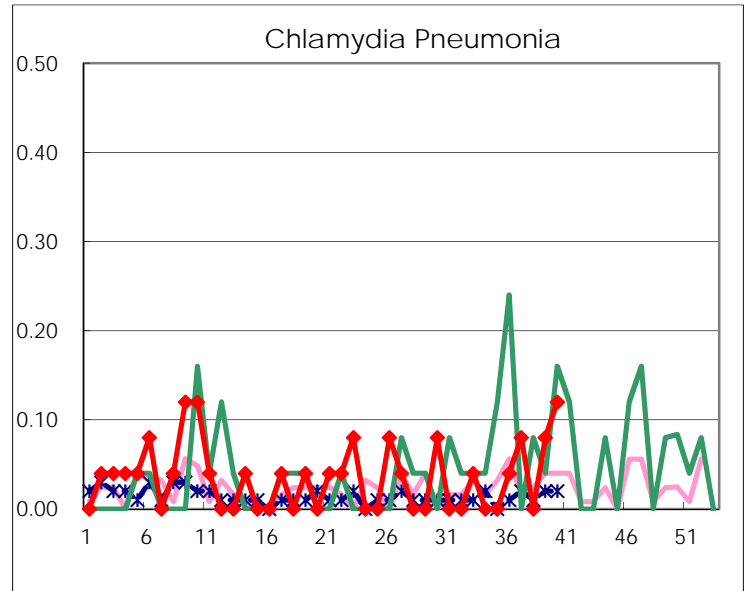
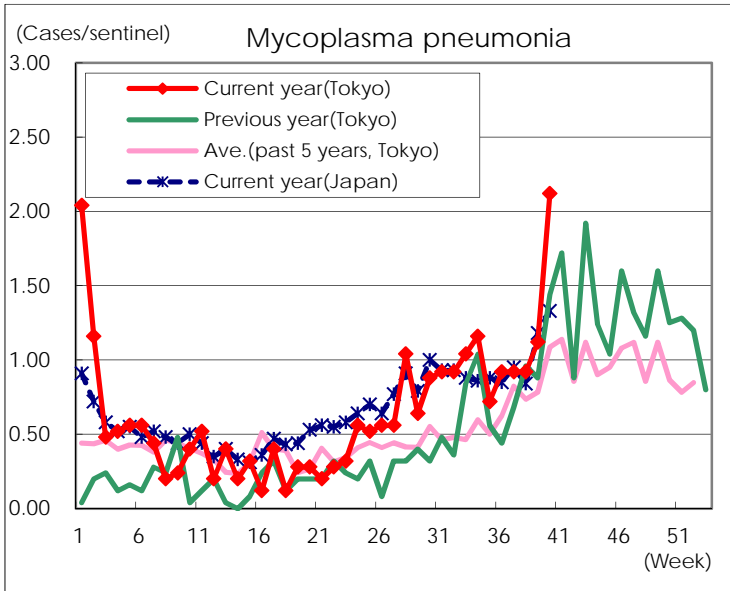
(Blank means 0.)

Disease Trend Graph (weekly reported cases per sentinel in comparison)









Number of sentinel facilities for weekly reporting		
Types of sentinels	Number of sentinels	Sentinels having reported
Pediatric	264	258
Influenza	419	410
Ophthalmic	39	39
Specially-designated	25	25