

## 4 November 2016 / Number 43

### Surveillance System in Tokyo, Japan

The infectious diseases which all physicians must report

All physicians must report to health centers the incidence of the diseases which are shown at page one. Health centers electronically report the individual cases to Tokyo Metropolitan Infectious Disease Surveillance Center.

The infectious diseases required to be reported by the sentinels

The numbers of patients who visit the sentinel clinics or hospitals during a week are reported to health centers in Tokyo. And they electronically report the numbers to Tokyo Metropolitan Infectious Disease Surveillance Center. We have about 500 sentinel clinics and hospitals in Tokyo.

Tokyo Metropolitan Institute of Public Health

TEL:81-3-3363-3213 FAX:81-3-5332-7365

e-mail:[www@tokyo-eiken.go.jp](mailto:www@tokyo-eiken.go.jp)

URL:[idsc.tokyo-eiken.go.jp/](http://idsc.tokyo-eiken.go.jp/)

---

Number of patients with the diseases which all physicians must report

Category	Diseases	Tokyo					Japan	
		40th	41st	42nd	43rd	Cum 2016	43rd	Cum 2016
I	Ebola hemorrhagic fever							
	Crimean-Congo hemorrhagic fever							
	Smallpox							
	South American hemorrhagic fever							
	Plague							
	Marburg disease							
	Lassa fever							
II	Acute poliomyelitis							
	Tuberculosis	65	56	65	69	3,028	356	19,873
	Diphtheria							
	Severe Acute Respiratory Syndrome(SARS)							
	Middle East Respiratory Syndrome (MERS)							
	Avian influenza H5N1							
	Avian influenza H7N9							
III	Cholera				1	2	1	9
	Shigellosis		1			34	3	106
	Enterohemorrhagic Escherichia coli infection	3	5	6	10	416	80	3,233
	Typhoid fever					17		50
	Paratyphoid fever			1		7	1	17
IV	Hepatitis E			1		32	1	320
	West Nile fever							
	Hepatitis A	1	2		1	61	5	244
	Echinococcosis							18
	Yellow fever							
	Psittacosis					1		4
	Omsk hemorrhagic fever							
	Relapsing fever							7
	Kyasanur forest disease							
	Q fever							
	Rabies							
	Coccidioidomycosis					2		3
	Monkeypox							
	Zika virus infection					2		9
	Severe Fever with Thrombocytopenia Syndrome						3	53
	Hemorrhagic fever with renal syndrome							
	Western equine encephalitis							
	Tick-borne encephalitis							1
	Anthrax							
	Chikungunya fever					4	1	13
	Scrub typhus(Tsutsugamushi disease)						7	110
	Dengue fever	5	1	3	3	84	7	309
	Eastern equine encephalitis							
	Avian influenza (excluding H5N1 and H7N9)							
	Nipah virus infection							
	Japanese spotted fever						14	243
	Japanese encephalitis						2	9
	Hantavirus pulmonary syndrome							
	Herpes B virus infection							
	Glanders							
	Brucellosis					1		2
	Venezuelan equine encephalitis							
Hendra virus infection								
Epidemic typhus								
Botulism					1		4	
Malaria	1		1		17		44	
Tularemia								
Lyme disease							8	
Lyssavirus infection(excluding rabies)								
Rift valley fever								
Melioidosis								
Legionellosis	9	4	4	6	122	38	1,332	
Leptospirosis	1				7	3	69	
Rocky mountain spotted fever								

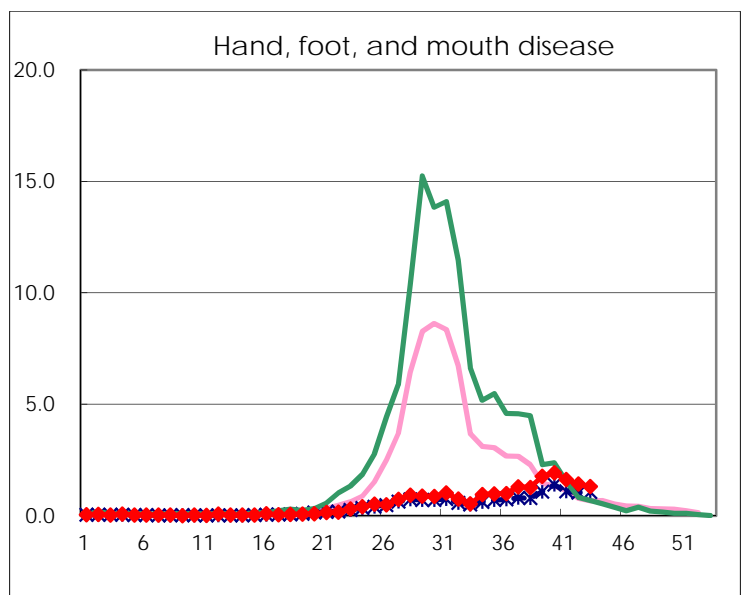
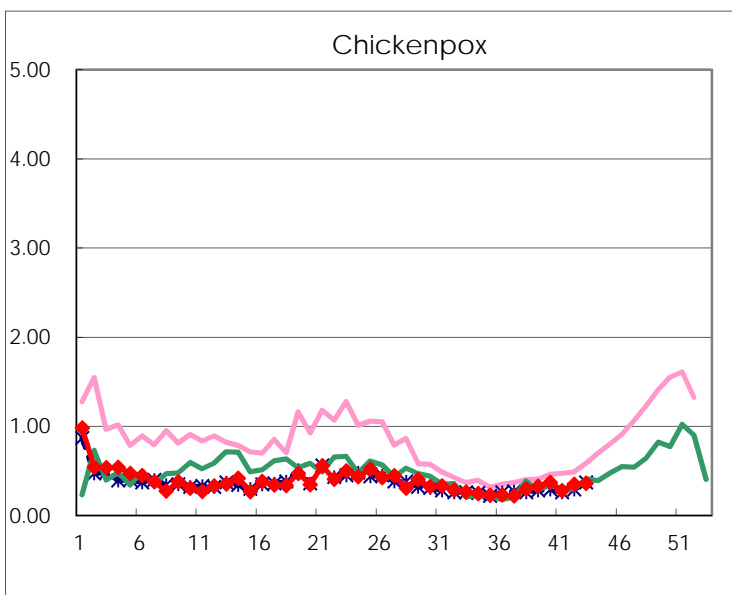
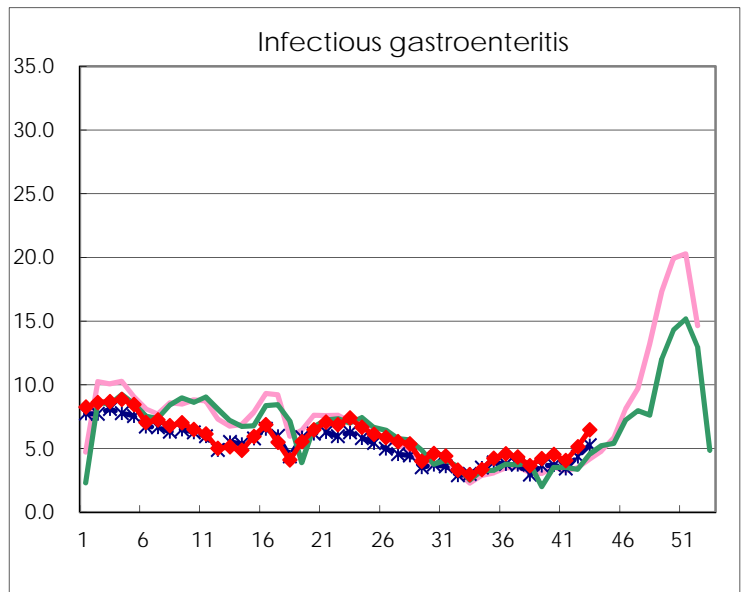
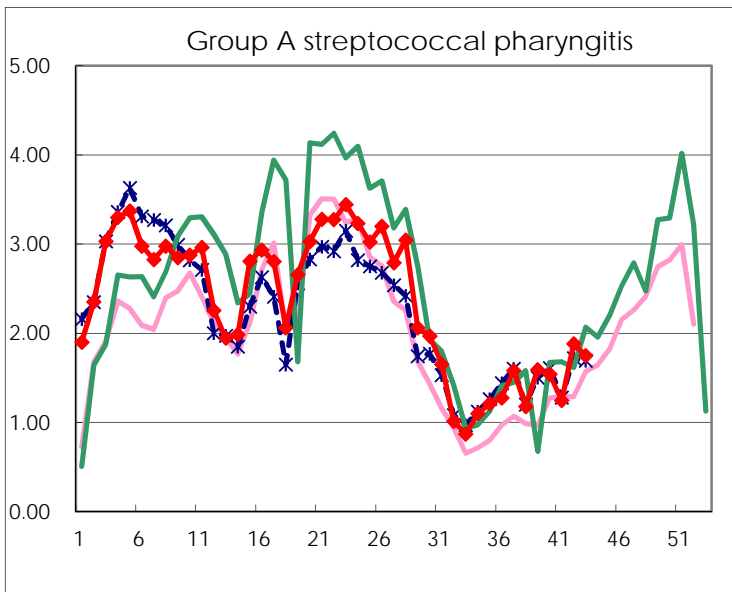
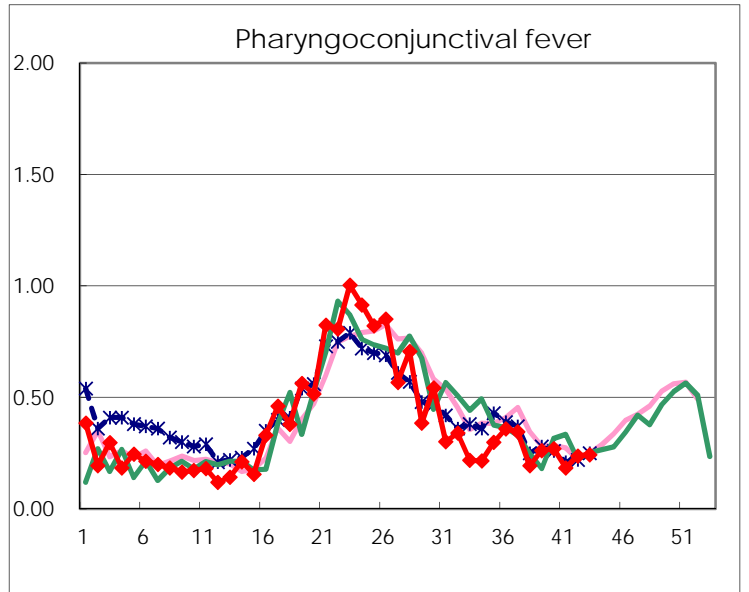
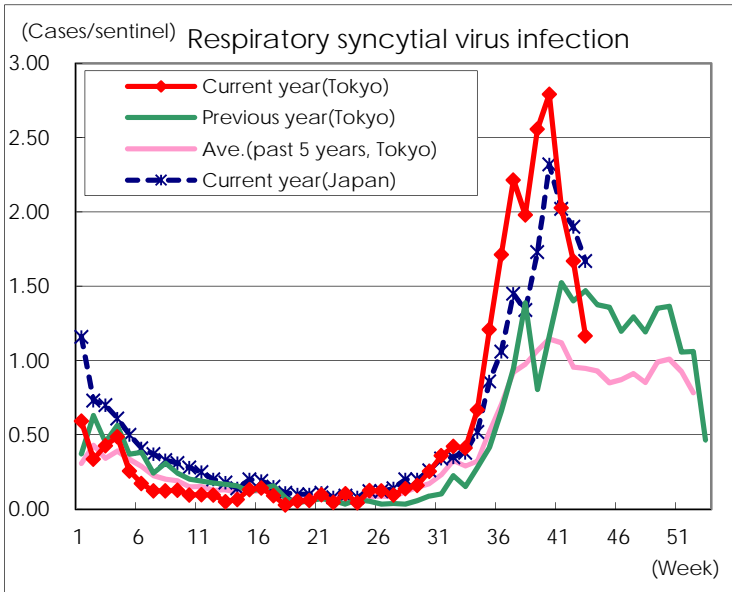
Category	Diseases	Tokyo					Japan	
		40th	41st	42nd	43rd	Cum 2016	43rd	Cum 2016
V	Amebiasis	7	2	8	5	192	15	951
	Viral hepatitis(excluding hepatitis A and E)	2	1	3	1	61	2	237
	CRE infection	5	5	2	2	161	17	1,246
	Acute encephalitis(excluding JE and WNE)	1	1			80	4	649
	Cryptosporidiosis					1		13
	Creutzfeldt-Jakob disease					14	1	148
	Severe invasive streptococcal infections(TSLS)	1	2			58	6	421
	Acquired immunodeficiency syndrome (AIDS)	14	6	11	7	401	18	1,208
	Giardiasis					15		57
	Invasive <i>Haemophilus influenzae</i> disease		1		1	41	2	252
	Invasive meningococcal disease		1			4		38
	Invasive pneumococcal disease	4	5	5	4	275	28	2,080
	Varicella (limited to hospitalized case)	3	1	1	1	44	3	247
	Congenital rubella syndrome							
	Syphilis	41	28	33	20	1,407	56	3,684
	Disseminated cryptococcosis	1		2		15	1	108
	Tetanus					4	1	105
	Vancomycin-resistant <i>S. aureus</i> infection							
	Vancomycin-resistant Enterococcus infection					2		47
	Rubella				1	16	2	113
Measles	2	2			22	2	143	
MDRA infection					1		32	

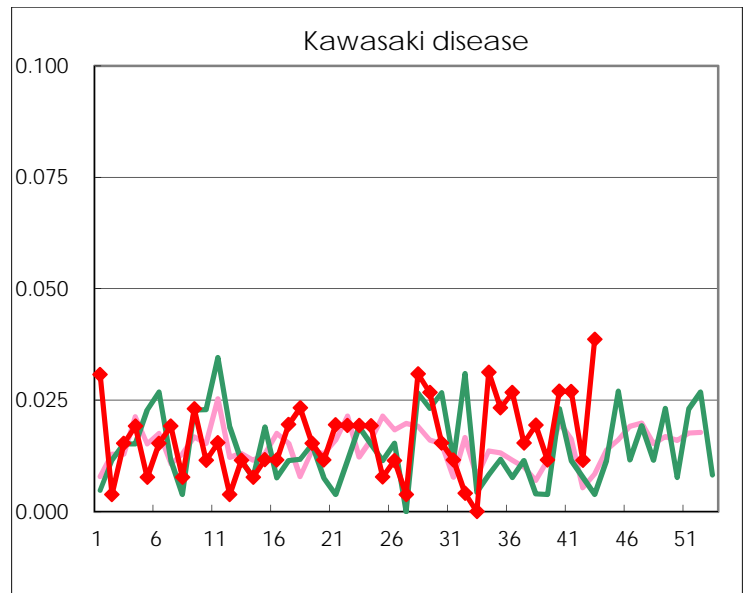
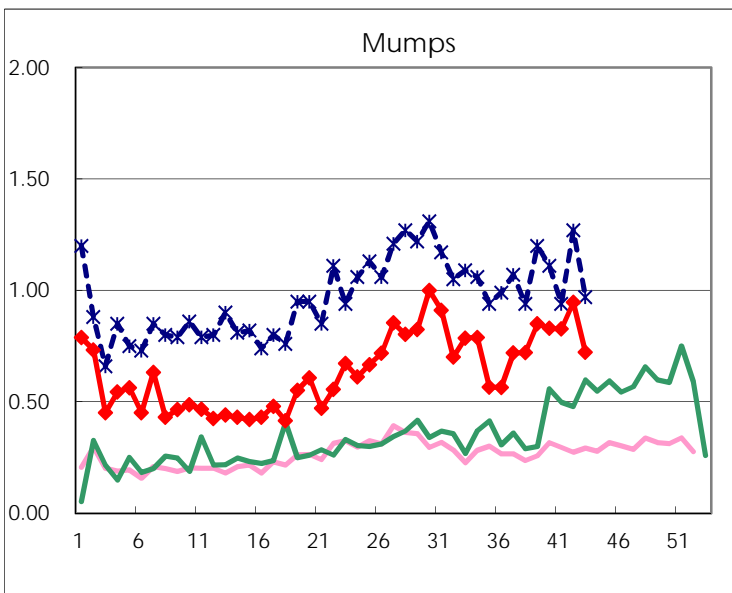
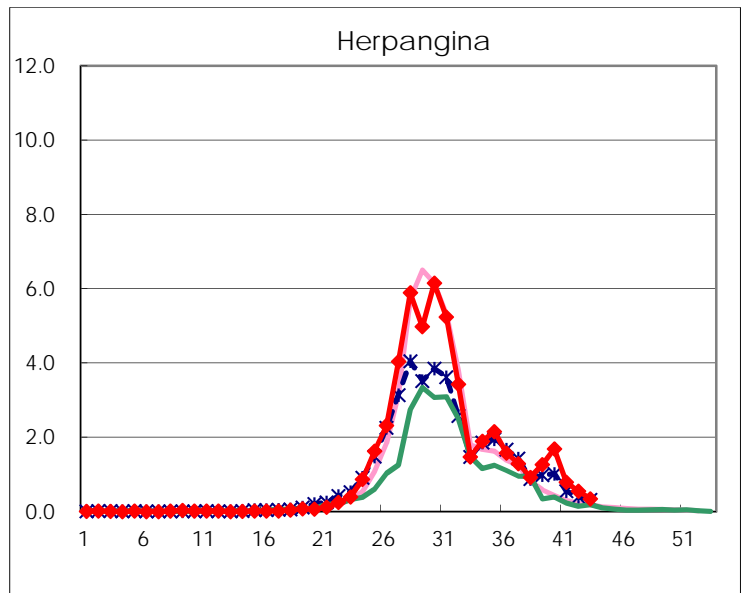
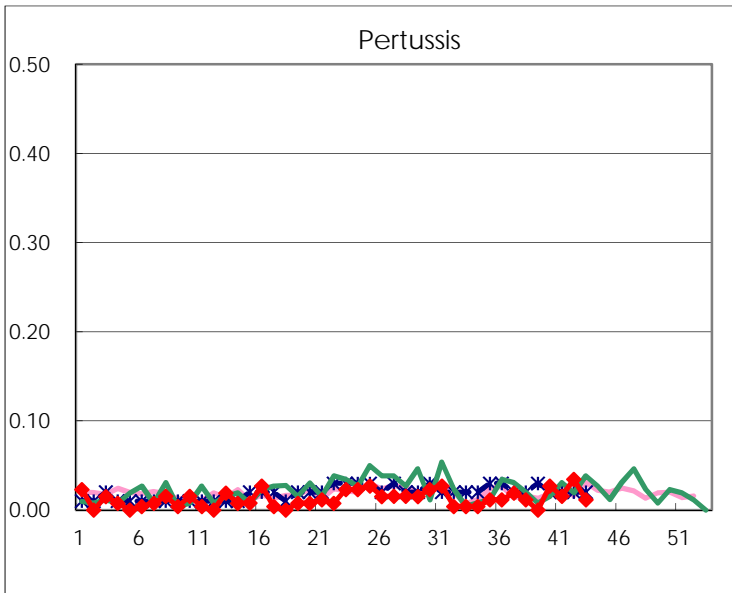
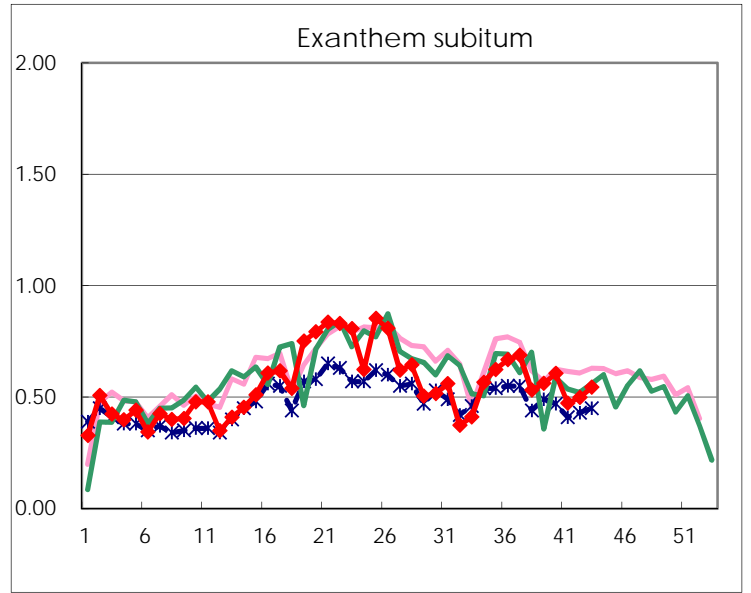
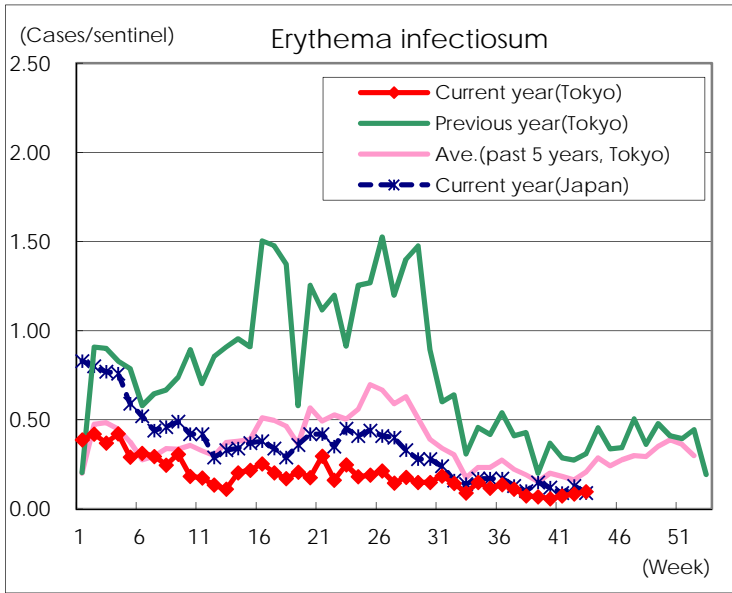
Number of patients with the diseases to be reported  
by the designated clinics and hospitals

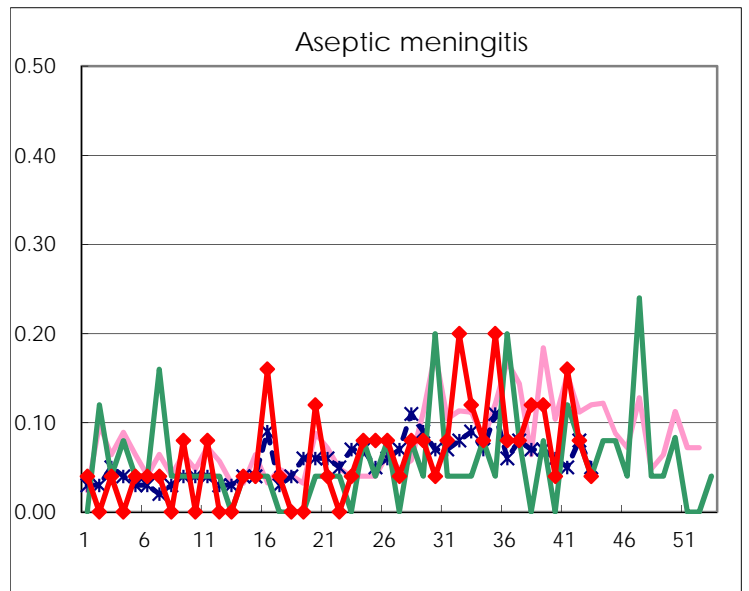
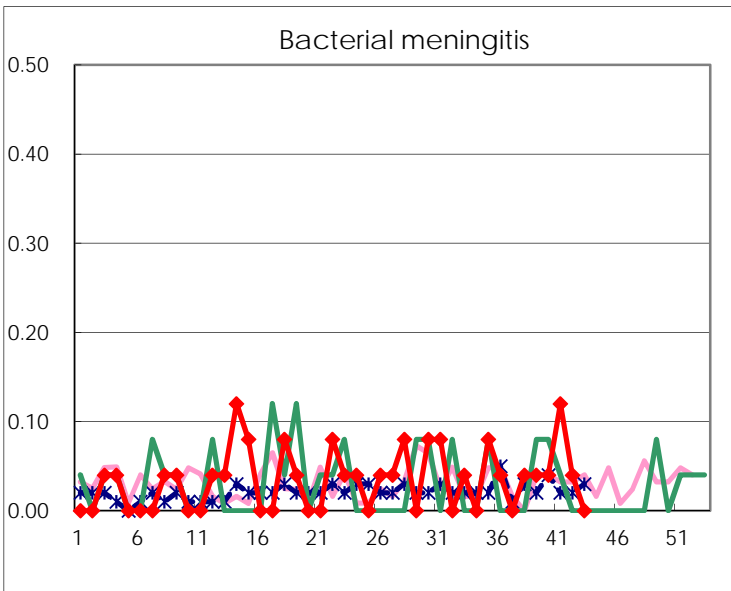
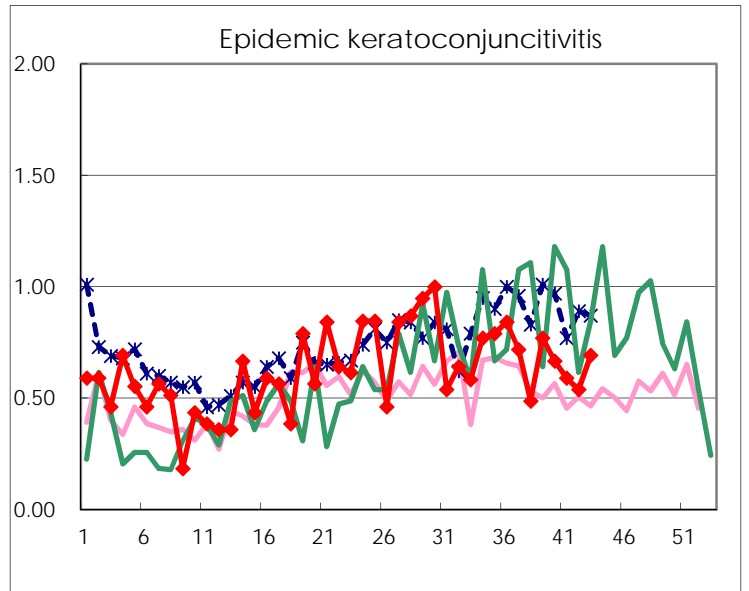
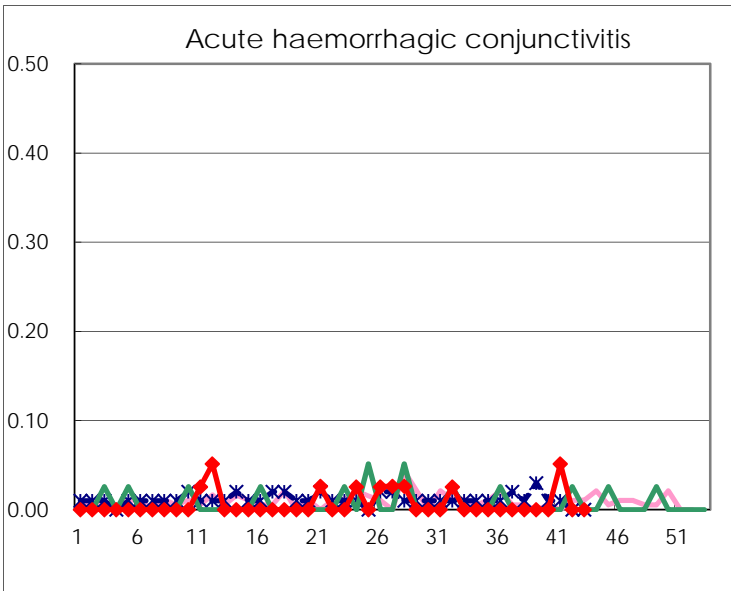
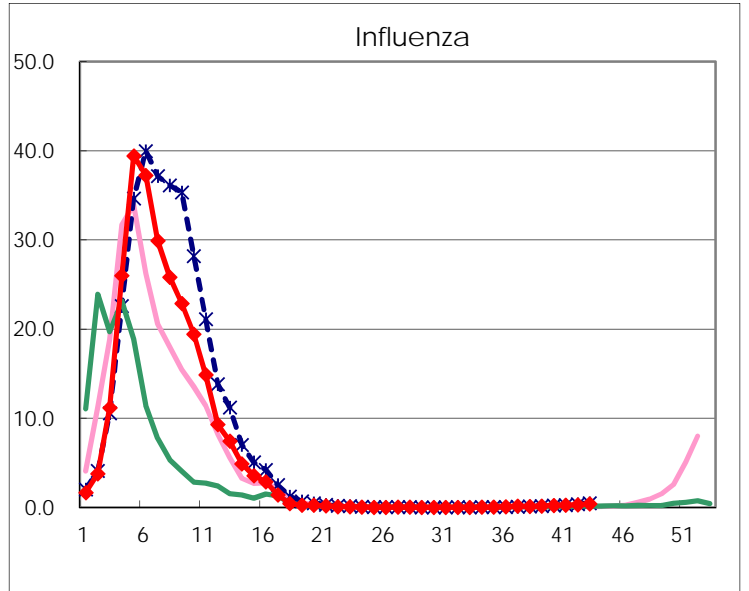
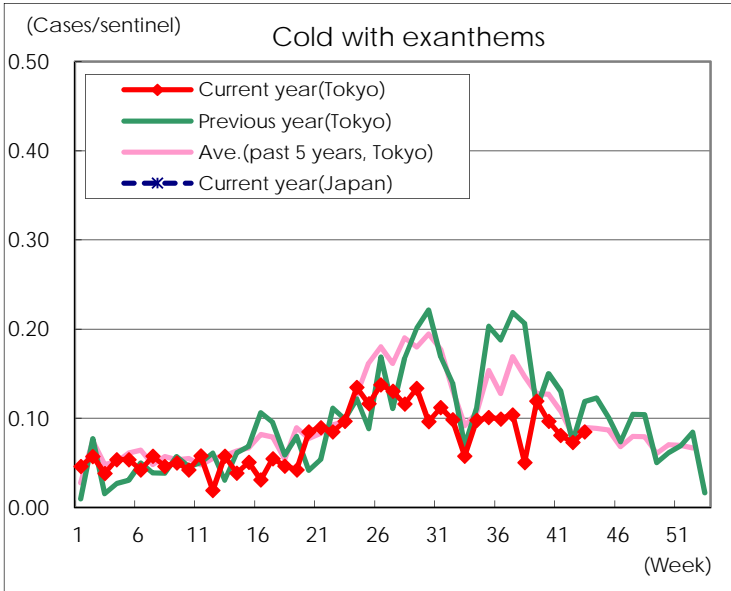
Diseases	Tokyo				
	40th	41st	42nd	43rd	/sentinel
Respiratory syncytial virus infection	723	527	436	302	1.17
Pharyngoconjunctival fever	70	48	62	63	0.24
Group A streptococcal pharyngitis	399	324	491	453	1.75
Infectious gastroenteritis	1,170	1,052	1,338	1,674	6.46
Chickenpox	96	72	91	93	0.36
Hand, foot, and mouth disease	498	423	371	338	1.31
Erythema infectiosum	15	19	22	25	0.10
Exanthem subitum	157	123	130	141	0.54
Pertussis	7	4	9	3	0.01
Herpangina	438	206	144	90	0.35
Mumps	215	215	247	187	0.72
Kawasaki disease	7	7	3	10	0.04
Cold with exanthems	25	21	19	22	0.08
Influenza	96	98	126	159	0.39
Acute hemorrhagic conjunctivitis		2			
Epidemic keratoconjunctivitis	26	23	21	27	0.69
Bacterial meningitis	1	3	1		
Aseptic meningitis	1	4	2	1	0.04
Mycoplasma pneumonia	53	43	41	46	1.84
Chlamydial pneumonia (excluding psittacosis)	3	1	1	1	0.04
Infectious gastroenteritis (only by Rotavirus)	2		1	4	0.16
Influenza-Associated Hospitalizations	2		2	4	0.16

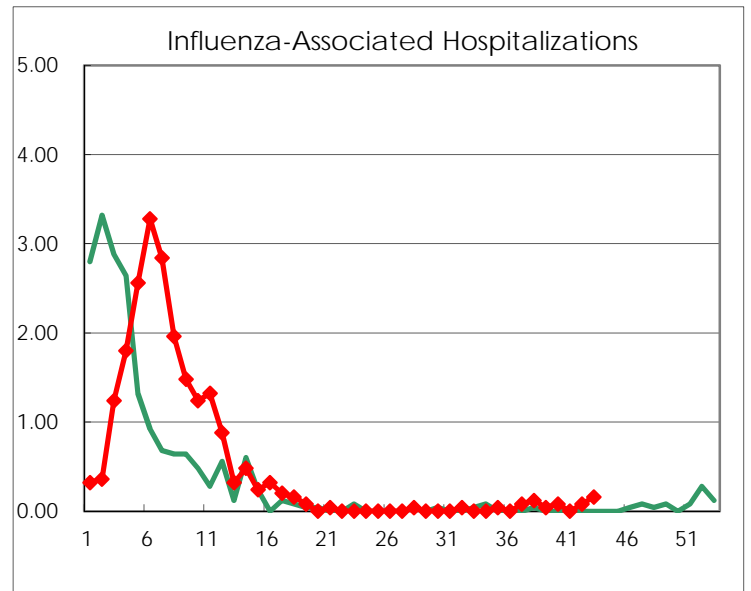
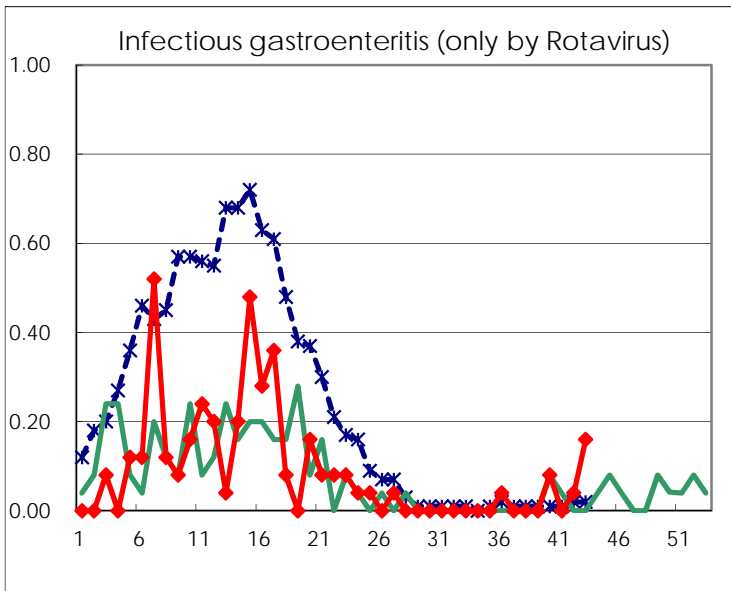
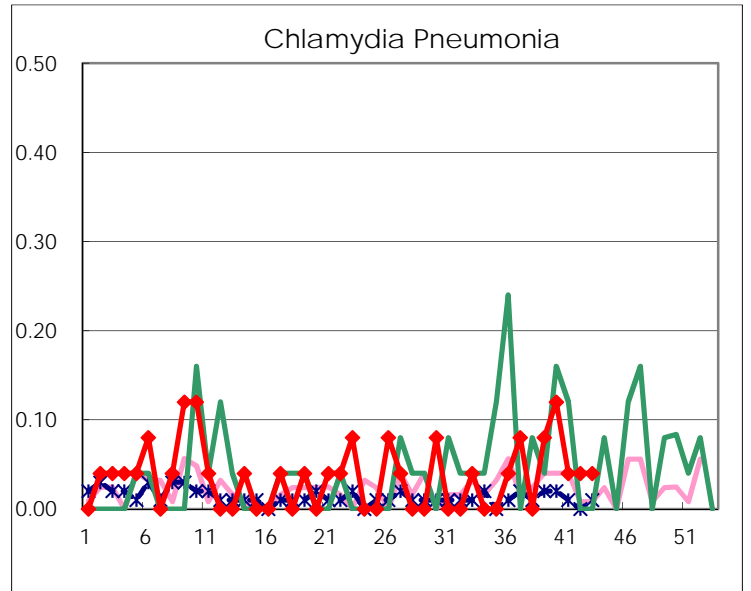
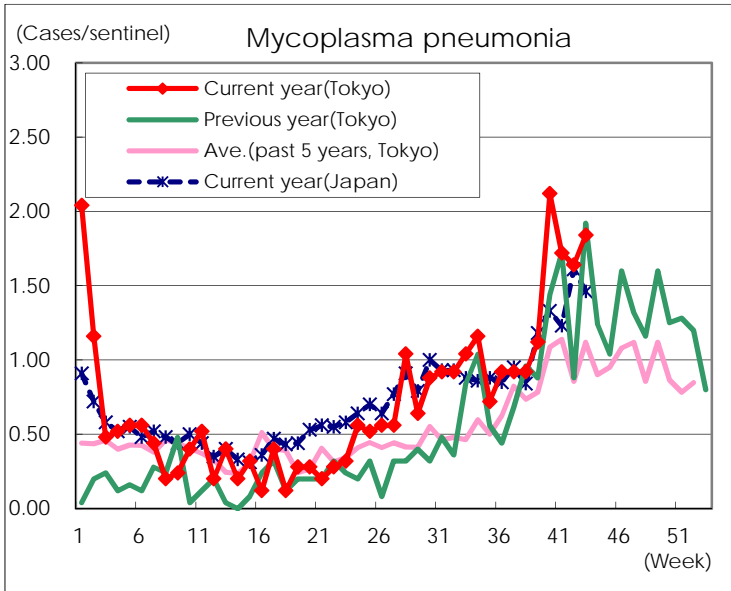
( Blank means 0. )

# Disease Trend Graph (weekly reported cases per sentinel in comparison)









Number of sentinel facilities for weekly reporting		
Types of sentinels	Number of sentinels	Sentinels having reported
Pediatric	264	259
Influenza	419	409
Ophthalmic	39	39
Specially-designated	25	25