

**10 November 2016 / Number 44**

## Surveillance System in Tokyo, Japan

The infectious diseases which all physicians must report

All physicians must report to health centers the incidence of the diseases which are shown at page one. Health centers electronically report the individual cases to Tokyo Metropolitan Infectious Disease Surveillance Center.

The infectious diseases required to be reported by the sentinels

The numbers of patients who visit the sentinel clinics or hospitals during a week are reported to health centers in Tokyo. And they electronically report the numbers to Tokyo Metropolitan Infectious Disease Surveillance Center. We have about 500 sentinel clinics and hospitals in Tokyo.

Tokyo Metropolitan Institute of Public Health

TEL:81-3-3363-3213 FAX:81-3-5332-7365

e-mail:[www@tokyo-eiken.go.jp](mailto:www@tokyo-eiken.go.jp)

URL:[idsc.tokyo-eiken.go.jp/](http://idsc.tokyo-eiken.go.jp/)

---

Number of patients with the diseases which all physicians must report

Category	Diseases	Tokyo					Japan	
		41st	42nd	43rd	44th	Cum 2016	44th	Cum 2016
I	Ebola hemorrhagic fever							
	Crimean-Congo hemorrhagic fever							
	Smallpox							
	South American hemorrhagic fever							
	Plague							
	Marburg disease							
	Lassa fever							
II	Acute poliomyelitis							
	Tuberculosis	58	67	75	78	3,119	315	20,320
	Diphtheria							
	Severe Acute Respiratory Syndrome(SARS)							
	Middle East Respiratory Syndrome (MERS)							
	Avian influenza H5N1							
	Avian influenza H7N9							
III	Cholera			1		2		9
	Shigellosis	1			1	35	2	108
	Enterohemorrhagic Escherichia coli infection	5	6	10	5	421	69	3,316
	Typhoid fever					17		50
	Paratyphoid fever		1		1	8	2	19
IV	Hepatitis E		1			32		319
	West Nile fever							
	Hepatitis A	2		1		61	2	247
	Echinococcosis							18
	Yellow fever							
	Psittacosis					1		4
	Omsk hemorrhagic fever							
	Relapsing fever							7
	Kyasanur forest disease							
	Q fever							
	Rabies							
	Coccidioidomycosis					2		3
	Monkeypox							
	Zika virus infection					2		9
	Severe Fever with Thrombocytopenia Syndrome						4	57
	Hemorrhagic fever with renal syndrome							
	Western equine encephalitis							
	Tick-borne encephalitis							1
	Anthrax							
	Chikungunya fever					4		13
	Scrub typhus(Tsutsugamushi disease)				1	1	19	131
	Dengue fever	1	3	3	1	85	3	312
	Eastern equine encephalitis							
	Avian influenza (excluding H5N1 and H7N9)							
	Nipah virus infection							
	Japanese spotted fever						7	253
	Japanese encephalitis							9
	Hantavirus pulmonary syndrome							
	Herpes B virus infection							
	Glanders							
	Brucellosis					1		2
	Venezuelan equine encephalitis							
Hendra virus infection								
Epidemic typhus								
Botulism					1		5	
Malaria		1				17	1	45
Tularemia								
Lyme disease							8	
Lyssavirus infection(excluding rabies)								
Rift valley fever								
Melioidosis								
Legionellosis	4	4	6		122	28	1,366	
Leptospirosis					7	1	71	
Rocky mountain spotted fever								

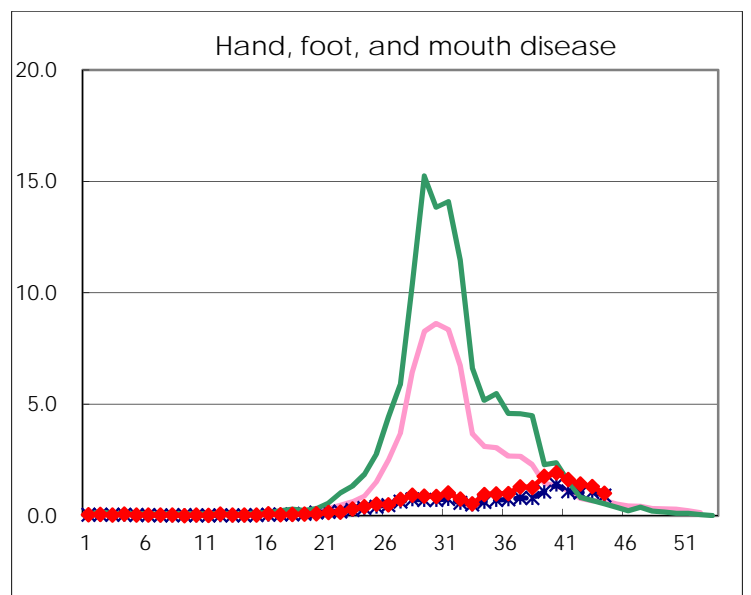
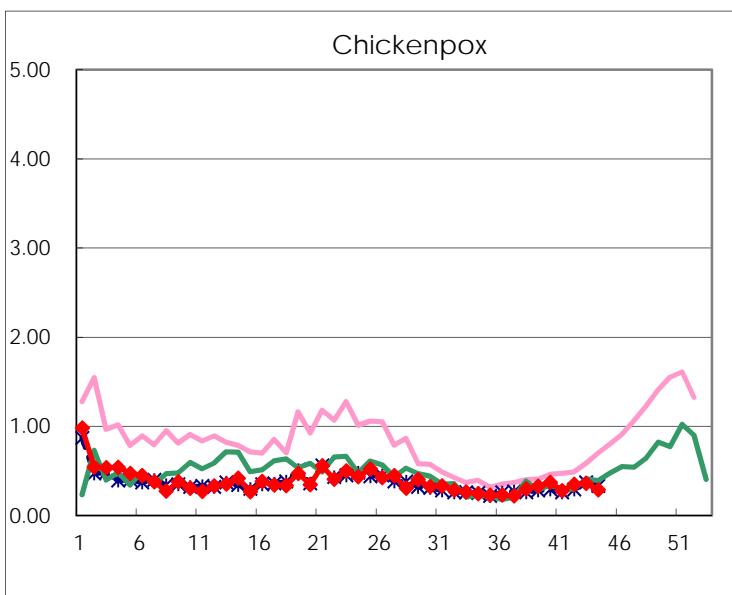
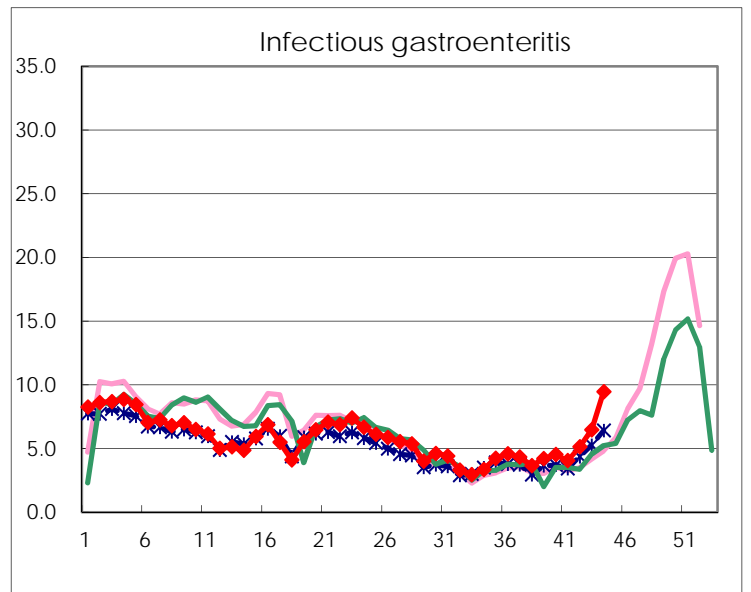
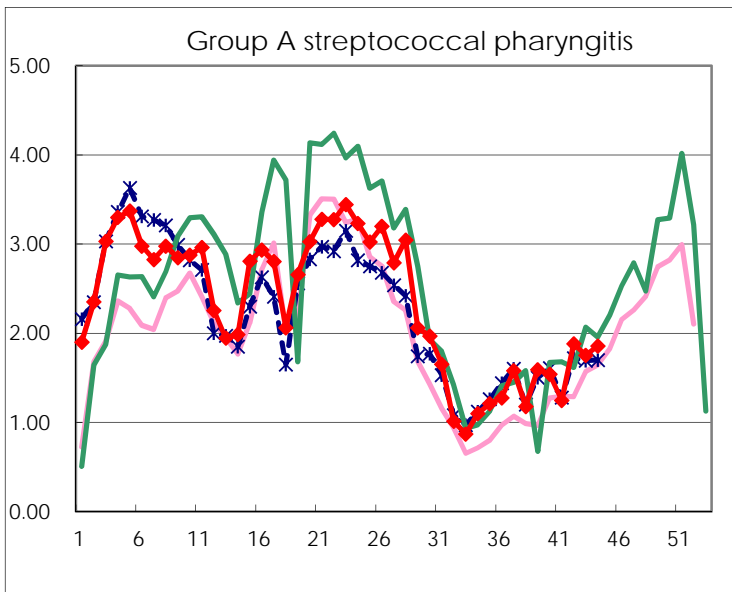
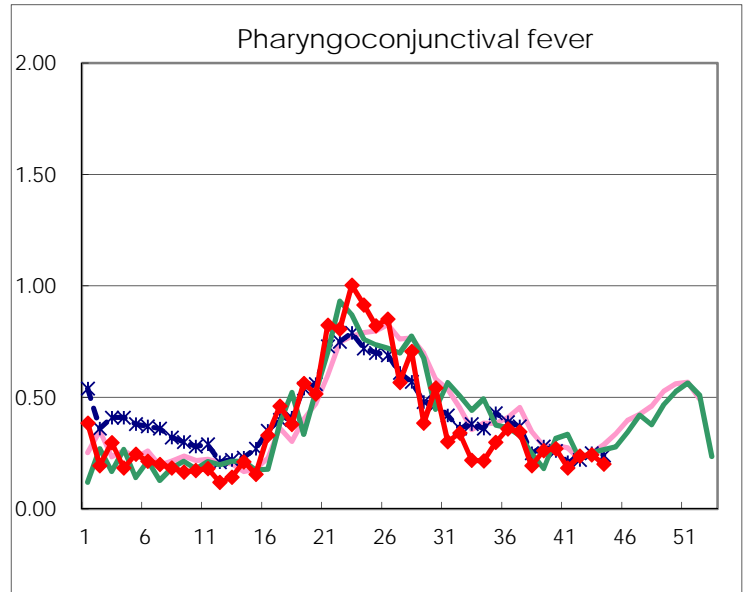
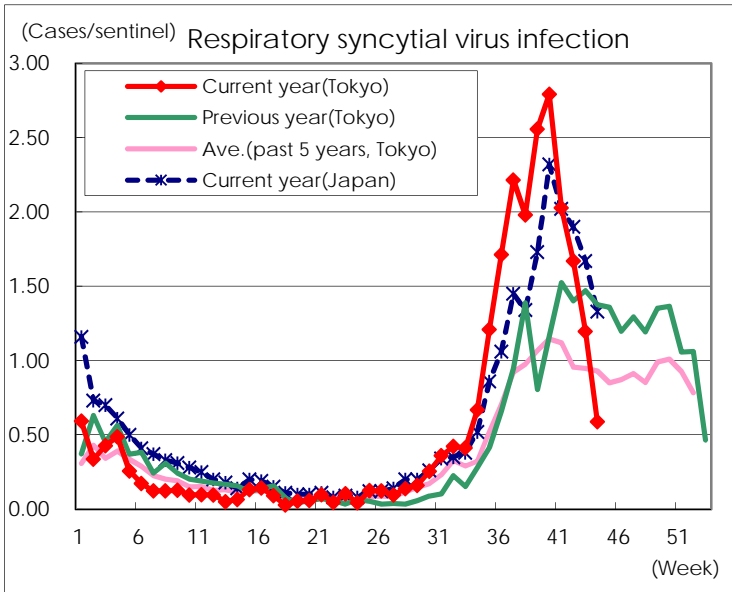
Category	Diseases	Tokyo					Japan	
		41st	42nd	43rd	44th	Cum 2016	44th	Cum 2016
V	Amebiasis	2	8	5	1	193	13	969
	Viral hepatitis(excluding hepatitis A and E)	1	3	1		61		239
	CRE infection	5	2	2	5	166	19	1,275
	Acute encephalitis(excluding JE and WNE)	1				80	6	656
	Cryptosporidiosis					1		13
	Creutzfeldt-Jakob disease				1	15	1	151
	Severe invasive streptococcal infections(TSLS)	2			1	59	3	424
	Acquired immunodeficiency syndrome (AIDS)	6	11	7	8	409	9	1,228
	Giardiasis					15		57
	Invasive <i>Haemophilus influenzae</i> disease	1		1	1	42	3	257
	Invasive meningococcal disease	1				4		38
	Invasive pneumococcal disease	5	5	4	6	281	37	2,137
	Varicella (limited to hospitalized case)	1	1	1	1	45	5	253
	Congenital rubella syndrome							
	Syphilis	28	33	20	27	1,434	61	3,779
	Disseminated cryptococcosis		2			15		109
	Tetanus					4	2	109
	Vancomycin-resistant <i>S. aureus</i> infection							
	Vancomycin-resistant Enterococcus infection					2		48
	Rubella			1		16	1	114
Measles	2				22	2	155	
MDRA infection					1		32	

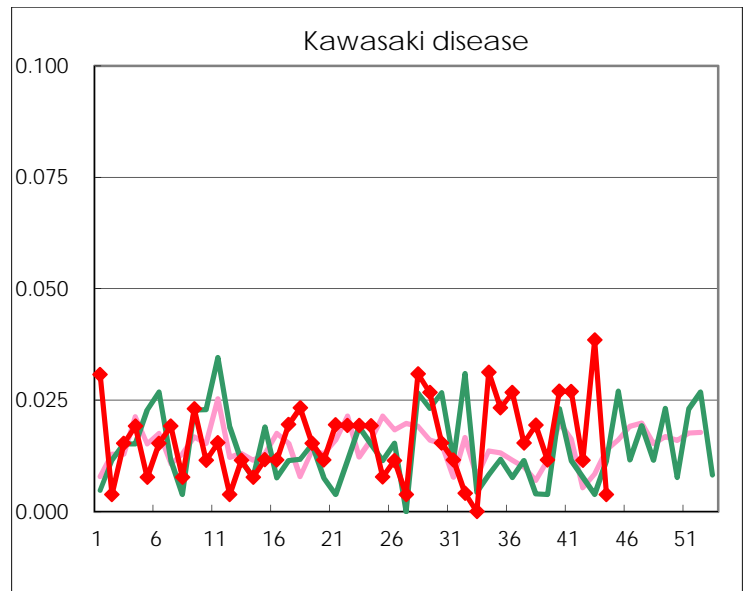
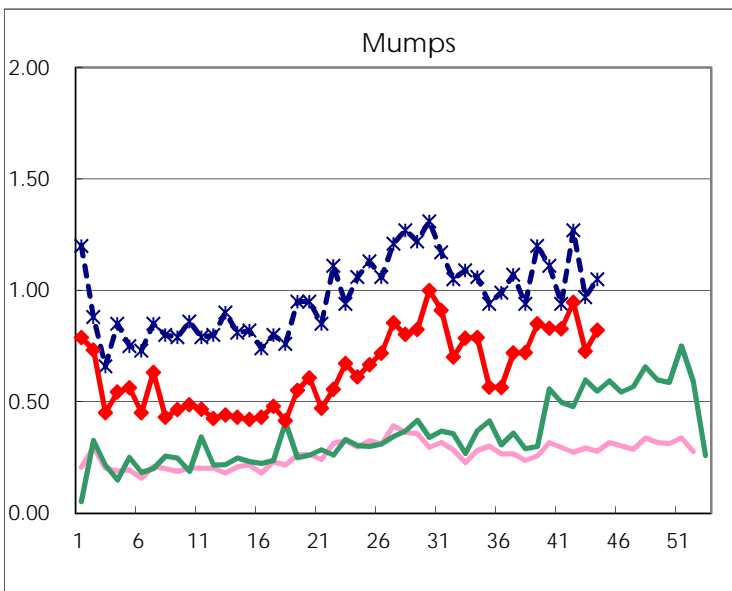
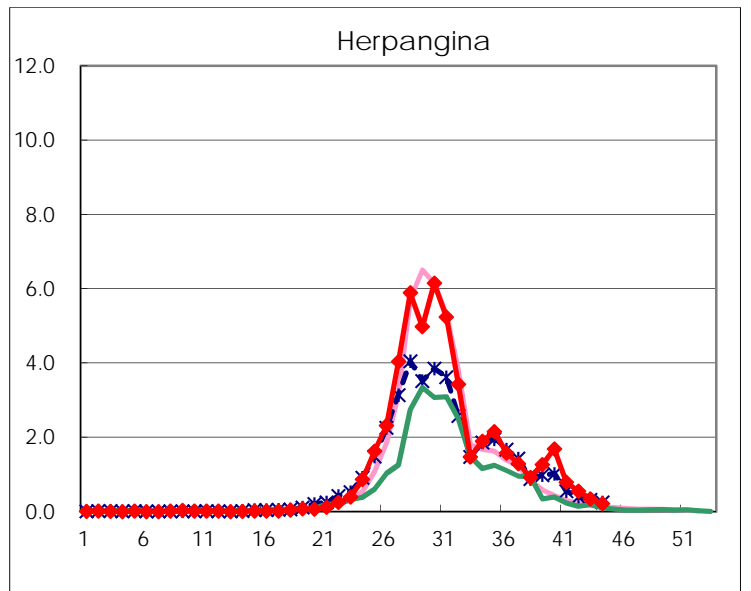
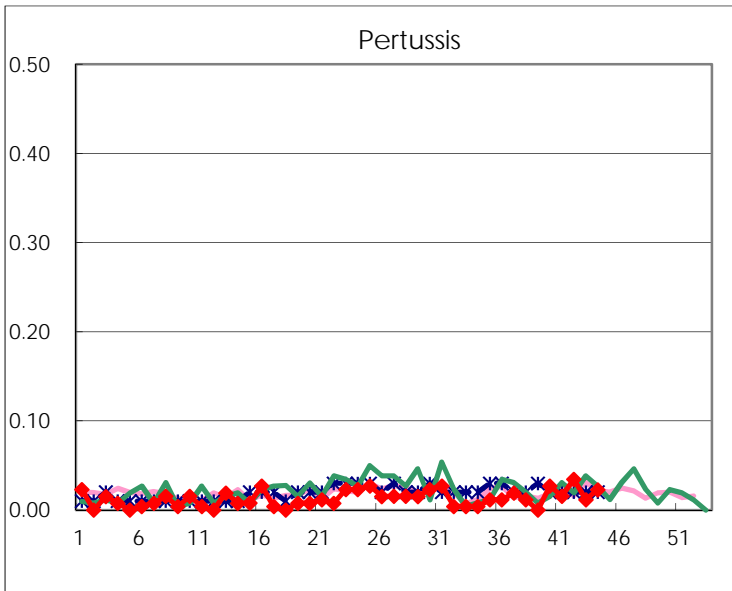
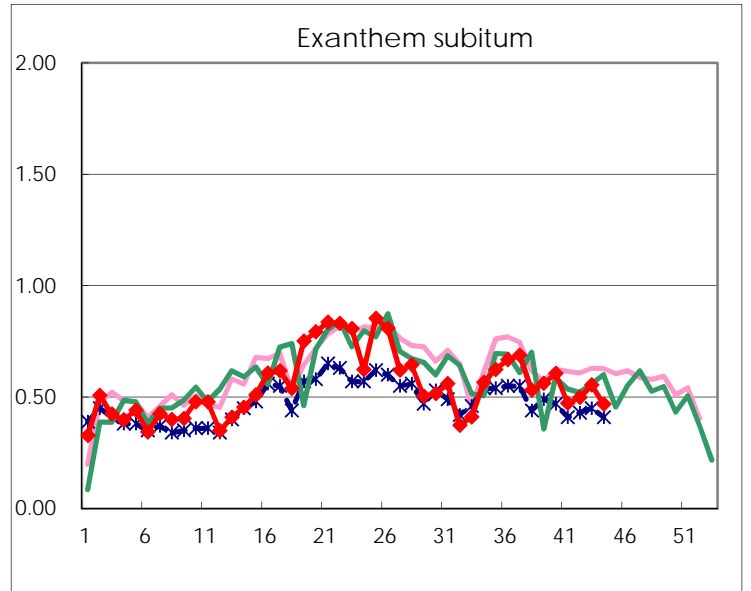
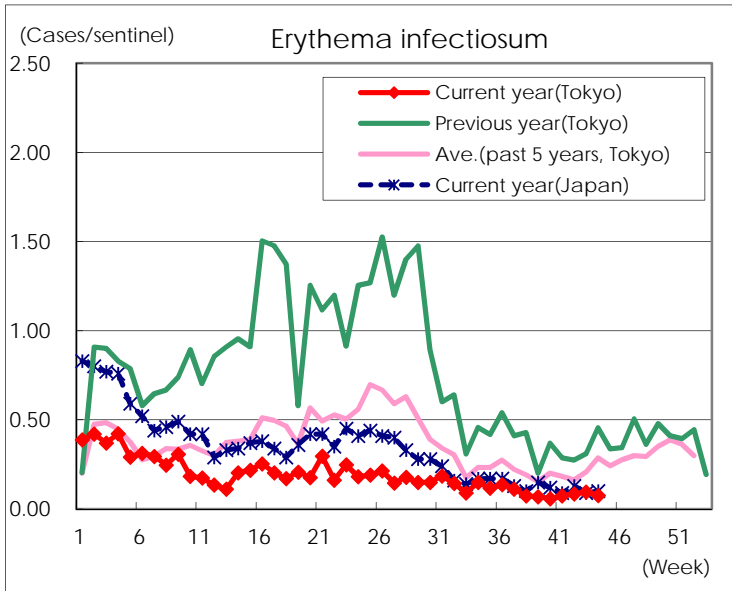
Number of patients with the diseases to be reported  
by the designated clinics and hospitals

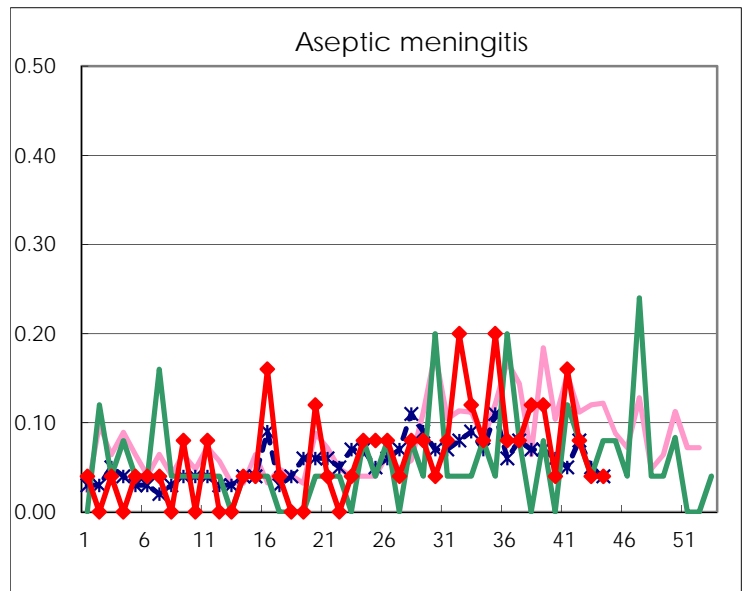
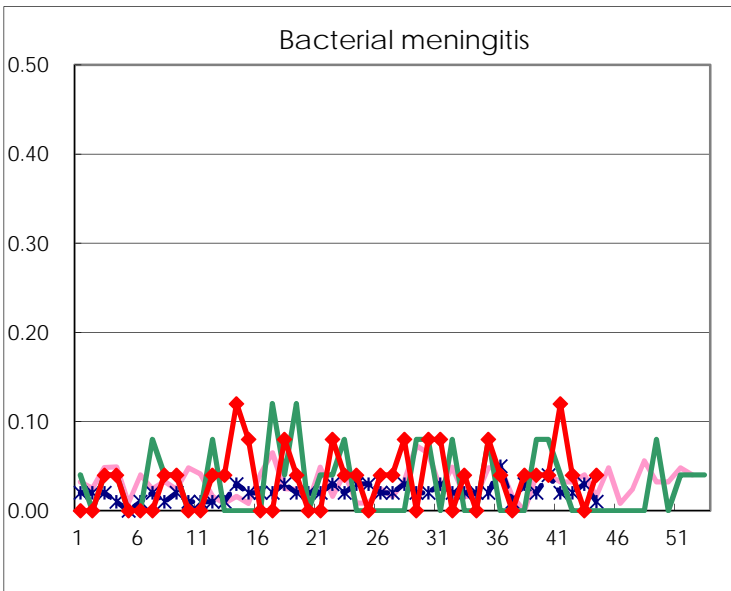
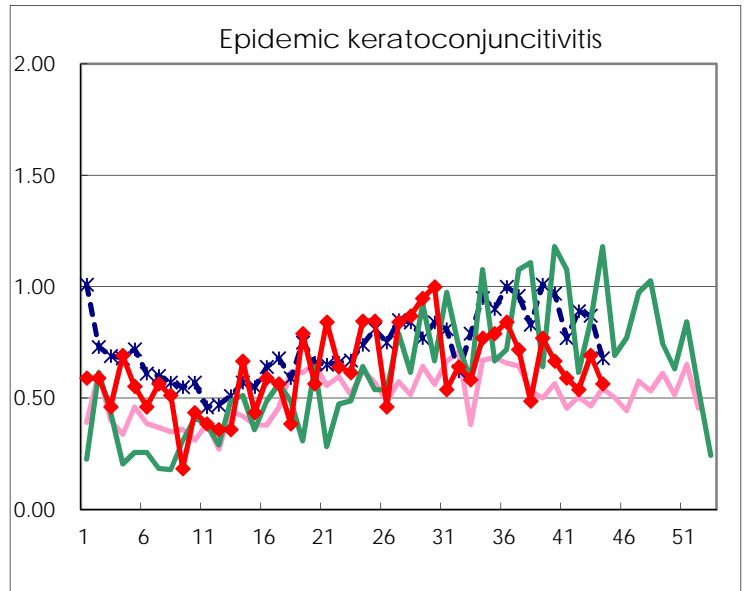
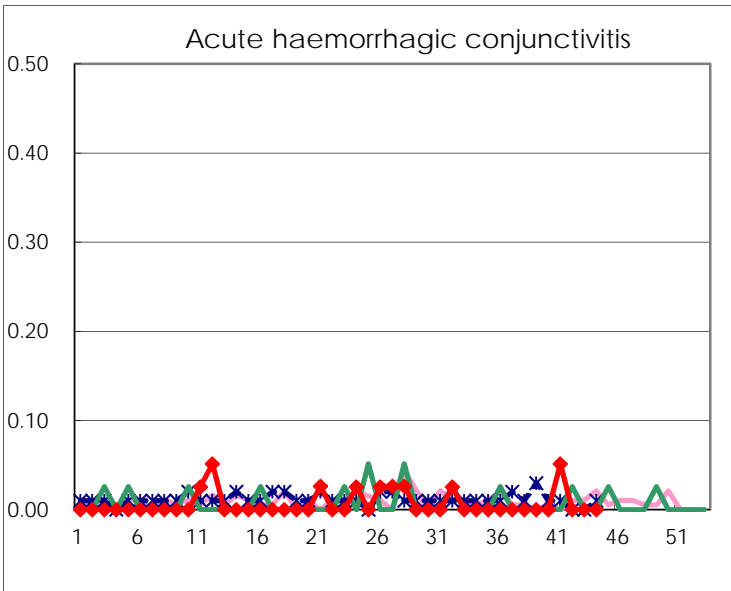
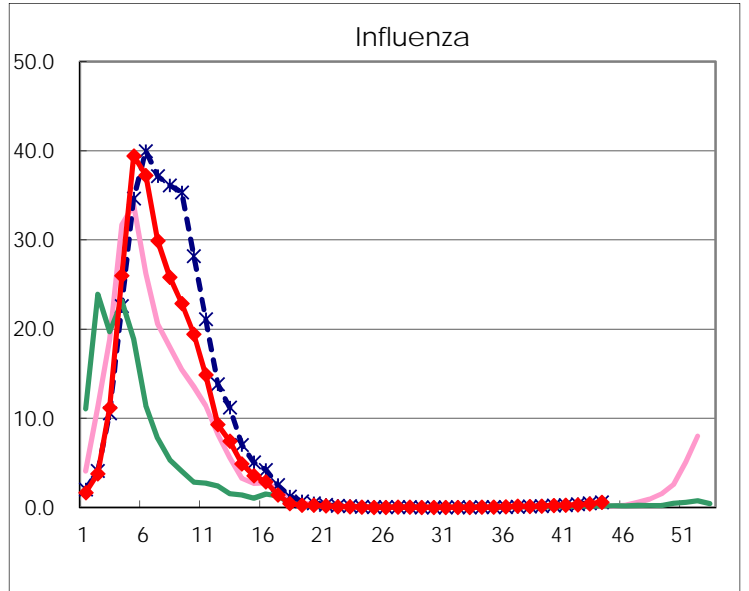
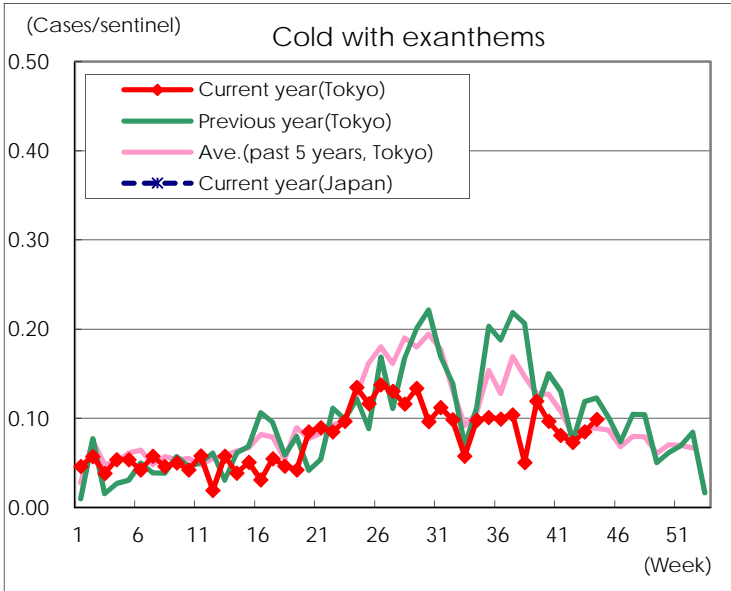
Diseases	Tokyo				
	41st	42nd	43rd	44th	/sentinel
Respiratory syncytial virus infection	527	436	311	155	0.59
Pharyngoconjunctival fever	48	62	63	53	0.20
Group A streptococcal pharyngitis	324	491	456	488	1.86
Infectious gastroenteritis	1,052	1,338	1,681	2,486	9.45
Chickenpox	72	91	93	76	0.29
Hand, foot, and mouth disease	423	371	339	265	1.01
Erythema infectiosum	19	22	25	20	0.08
Exanthem subitum	123	130	144	123	0.47
Pertussis	4	9	3	6	0.02
Herpangina	206	144	90	57	0.22
Mumps	215	247	189	216	0.82
Kawasaki disease	7	3	10	1	
Cold with exanthems	21	19	22	26	0.10
Influenza	98	126	159	242	0.58
Acute hemorrhagic conjunctivitis	2				
Epidemic keratoconjunctivitis	23	21	27	22	0.56
Bacterial meningitis	3	1		1	0.04
Aseptic meningitis	4	2	1	1	0.04
Mycoplasma pneumonia	43	41	46	33	1.32
Chlamydial pneumonia (excluding psittacosis)	1	1	1		
Infectious gastroenteritis (only by Rotavirus)		1	4	2	0.08
Influenza-Associated Hospitalizations		2	4		

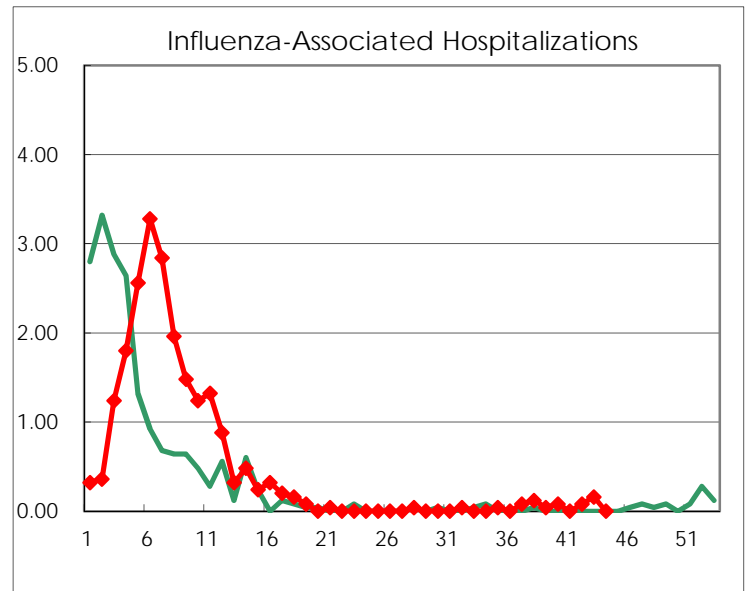
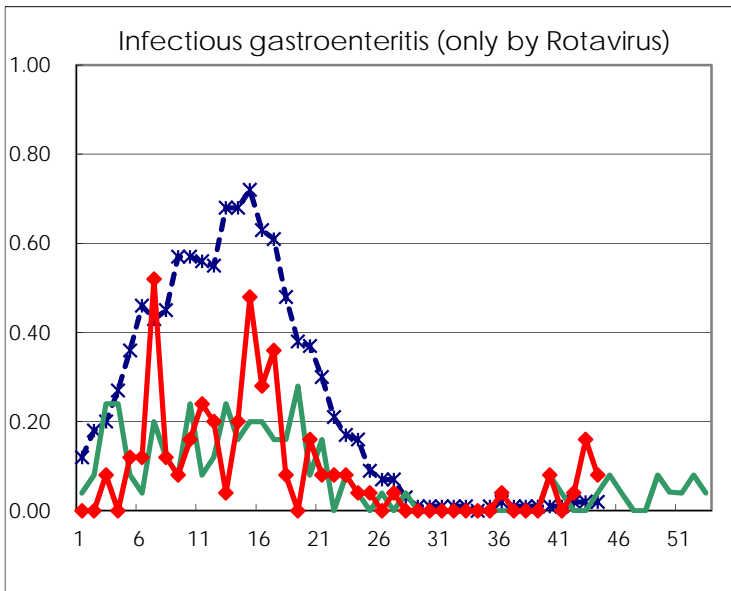
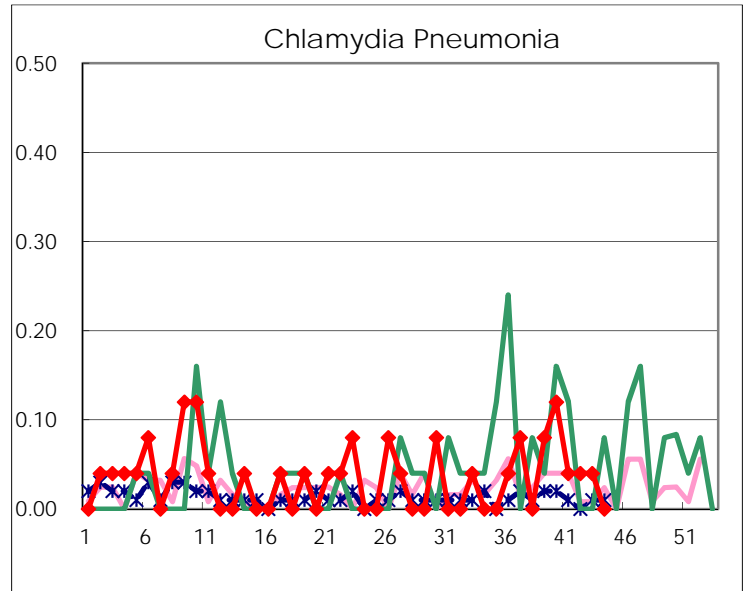
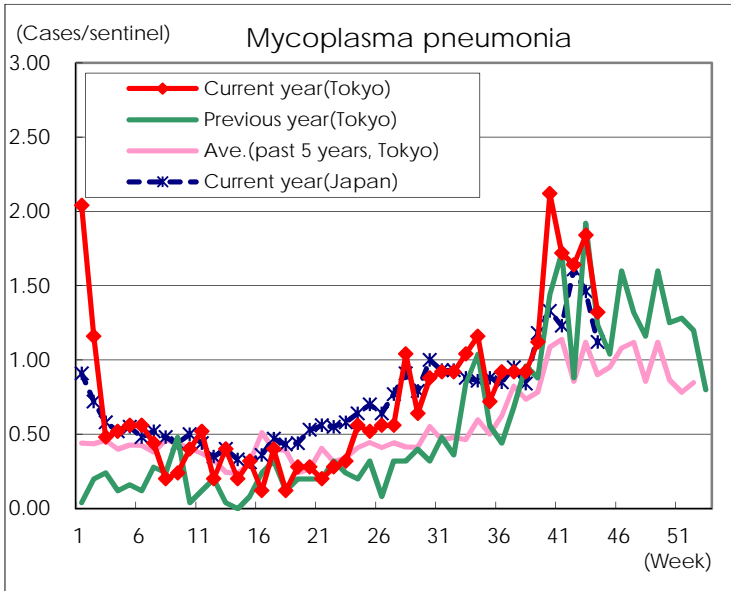
( Blank means 0. )

# Disease Trend Graph (weekly reported cases per sentinel in comparison)









Number of sentinel facilities for weekly reporting		
Types of sentinels	Number of sentinels	Sentinels having reported
Pediatric	264	263
Influenza	419	414
Ophthalmic	39	39
Specially-designated	25	25