

17 November 2016 / Number 45

Surveillance System in Tokyo, Japan

The infectious diseases which all physicians must report

All physicians must report to health centers the incidence of the diseases which are shown at page one. Health centers electronically report the individual cases to Tokyo Metropolitan Infectious Disease Surveillance Center.

The infectious diseases required to be reported by the sentinels

The numbers of patients who visit the sentinel clinics or hospitals during a week are reported to health centers in Tokyo. And they electronically report the numbers to Tokyo Metropolitan Infectious Disease Surveillance Center. We have about 500 sentinel clinics and hospitals in Tokyo.

Tokyo Metropolitan Institute of Public Health

TEL:81-3-3363-3213 FAX:81-3-5332-7365

e-mail:www@tokyo-eiken.go.jp

URL:idsc.tokyo-eiken.go.jp/

Number of patients with the diseases which all physicians must report

Category	Diseases	Tokyo				Japan		
		42nd	43rd	44th	45th	Cum 2016	45th	Cum 2016
I	Ebola hemorrhagic fever							
	Crimean-Congo hemorrhagic fever							
	Smallpox							
	South American hemorrhagic fever							
	Plague							
	Marburg disease							
	Lassa fever							
II	Acute poliomyelitis							
	Tuberculosis	72	77	88	60	3,198	341	20,821
	Diphtheria							
	Severe Acute Respiratory Syndrome(SARS)							
	Middle East Respiratory Syndrome (MERS)							
	Avian influenza H5N1							
	Avian influenza H7N9							
III	Cholera		1			2		9
	Shigellosis			1		35	1	109
	Enterohemorrhagic Escherichia coli infection	6	10	5	5	426	76	3,396
	Typhoid fever					17		50
	Paratyphoid fever	1		1		8		19
IV	Hepatitis E	1				32	1	321
	West Nile fever							
	Hepatitis A		1			61	2	251
	Echinococcosis							18
	Yellow fever							
	Psittacosis				1	2	1	5
	Omsk hemorrhagic fever							
	Relapsing fever							7
	Kyasanur forest disease							
	Q fever							
	Rabies							
	Coccidioidomycosis					2		3
	Monkeypox							
	Zika virus infection					2		9
	Severe Fever with Thrombocytopenia Syndrome							57
	Hemorrhagic fever with renal syndrome							
	Western equine encephalitis							
	Tick-borne encephalitis							1
	Anthrax							
	Chikungunya fever					4	1	14
	Scrub typhus(Tsutsugamushi disease)			2		2	34	172
	Dengue fever	3	3	1	1	86	3	315
	Eastern equine encephalitis							
	Avian influenza (excluding H5N1 and H7N9)							
	Nipah virus infection							
	Japanese spotted fever						5	260
	Japanese encephalitis							10
	Hantavirus pulmonary syndrome							
	Herpes B virus infection							
	Glanders							
	Brucellosis					1		2
	Venezuelan equine encephalitis							
Hendra virus infection								
Epidemic typhus								
Botulism					1		5	
Malaria	1				17	1	46	
Tularemia								
Lyme disease							8	
Lyssavirus infection(excluding rabies)								
Rift valley fever								
Melioidosis								
Legionellosis	4	6		3	125	28	1,397	
Leptospirosis					7		71	
	Rocky mountain spotted fever							

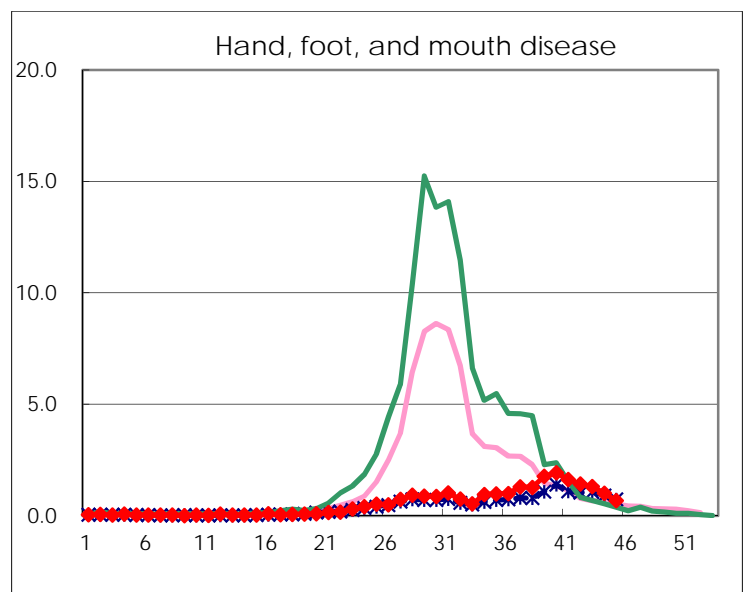
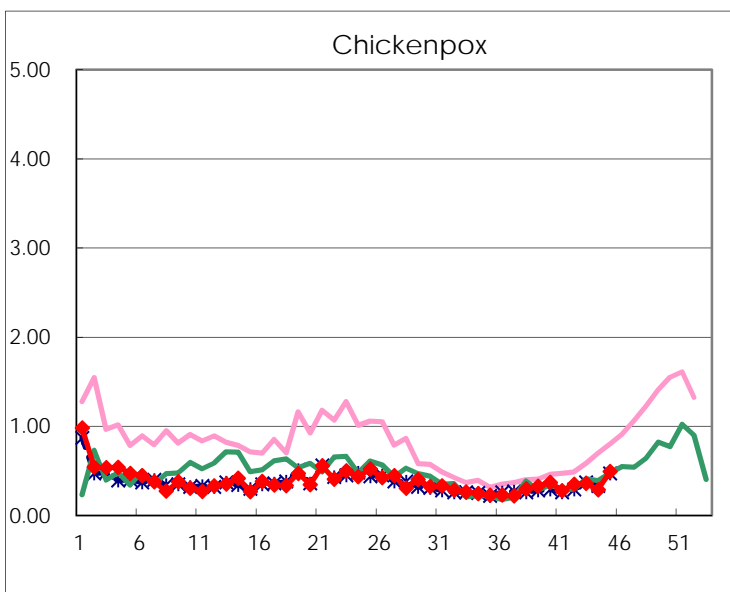
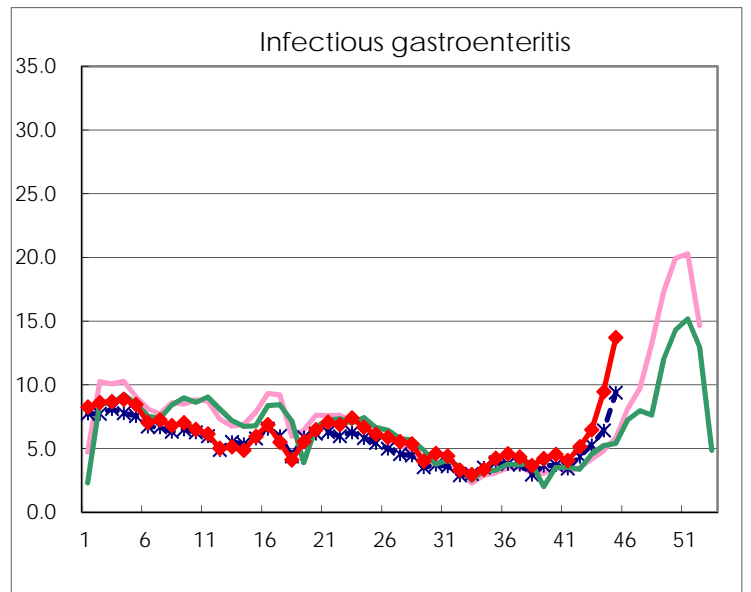
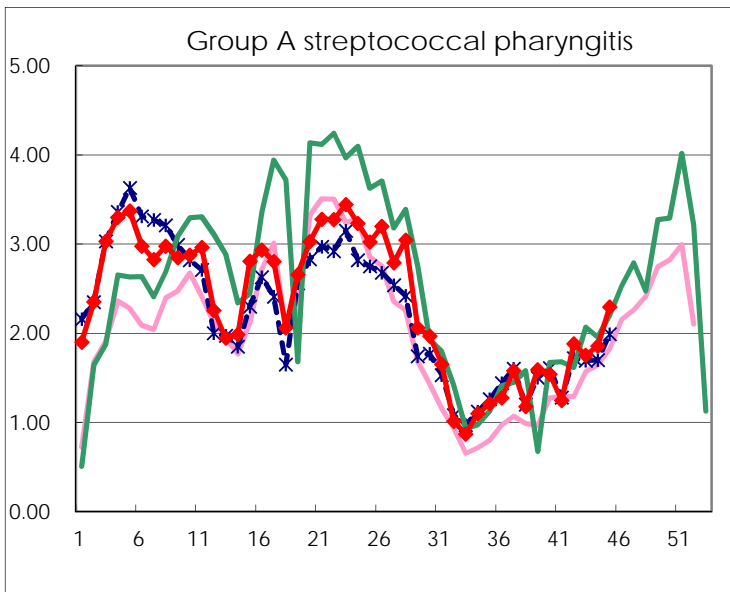
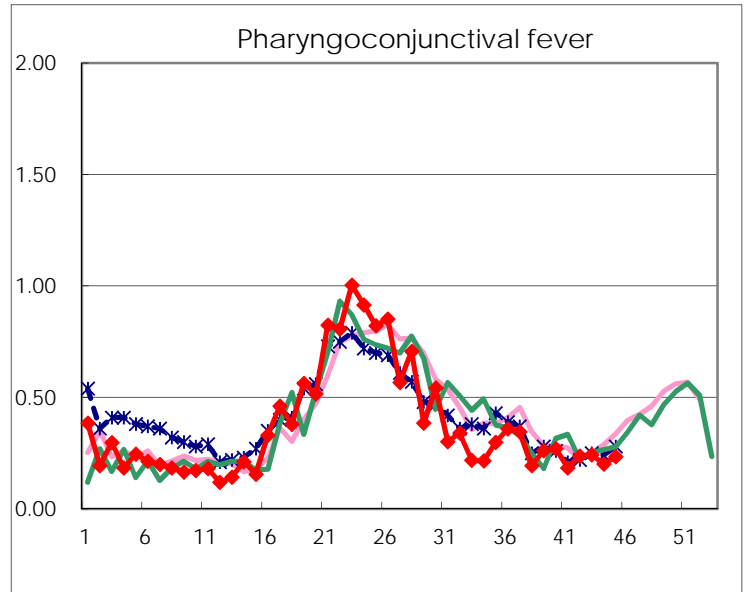
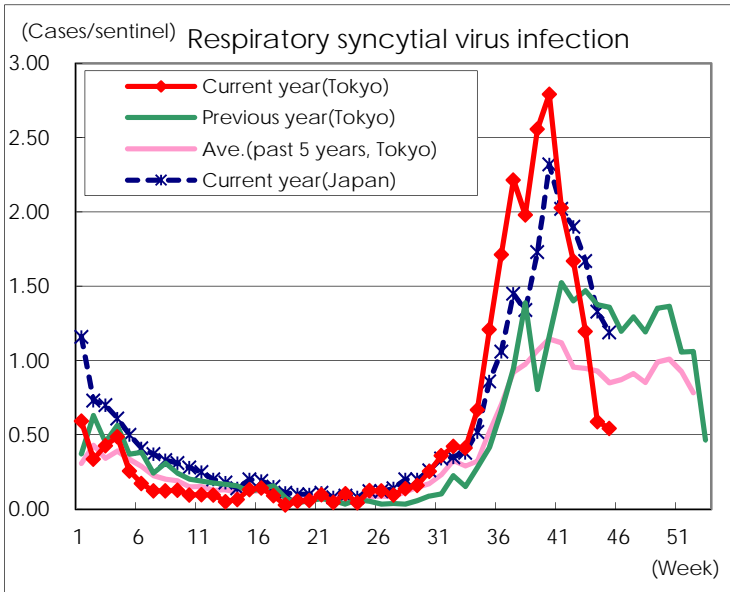
Category	Diseases	Tokyo					Japan	
		42nd	43rd	44th	45th	Cum 2016	45th	Cum 2016
V	Amebiasis	8	5	1	3	196	8	983
	Viral hepatitis(excluding hepatitis A and E)	3	2	1	1	64	3	247
	CRE infection	2	2	5	3	169	29	1,321
	Acute encephalitis(excluding JE and WNE)					80	6	671
	Cryptosporidiosis					1		13
	Creutzfeldt-Jakob disease			1		15	3	154
	Severe invasive streptococcal infections(TSLS)			1		59	9	442
	Acquired immunodeficiency syndrome (AIDS)	11	8	9	5	416	11	1,248
	Giardiasis					15	3	61
	Invasive <i>Haemophilus influenzae</i> disease		1	1		42	3	261
	Invasive meningococcal disease				1	5		39
	Invasive pneumococcal disease	5	4	6	12	293	47	2,216
	Varicella (limited to hospitalized case)	1	1	1	1	46	4	260
	Congenital rubella syndrome							
	Syphilis	33	20	29	27	1,463	66	3,874
	Disseminated cryptococcosis	2				15	1	111
	Tetanus					4	1	112
	Vancomycin-resistant <i>S. aureus</i> infection							
	Vancomycin-resistant Enterococcus infection					2		48
	Rubella		1		2	18	4	119
Measles					22	1	154	
MDRA infection					1		32	

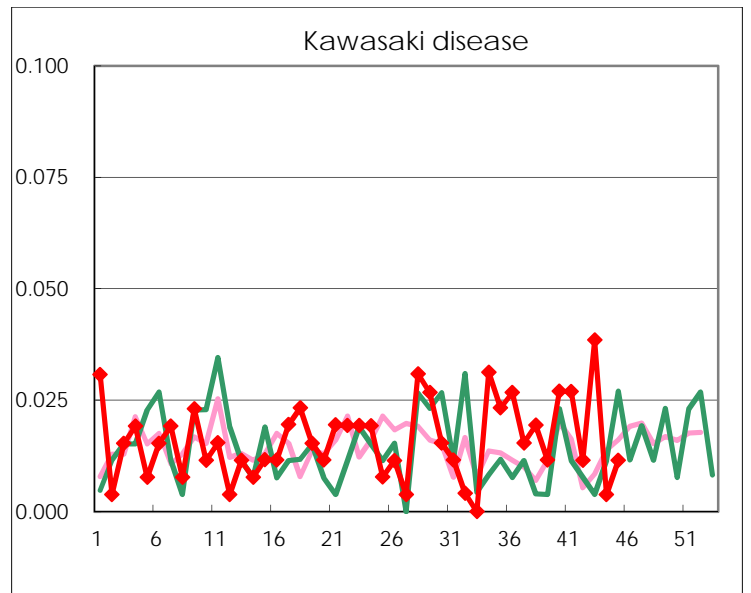
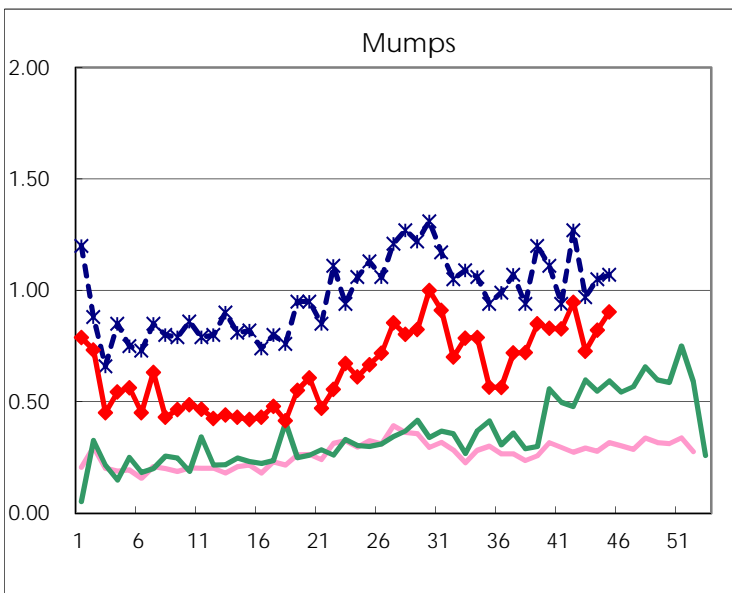
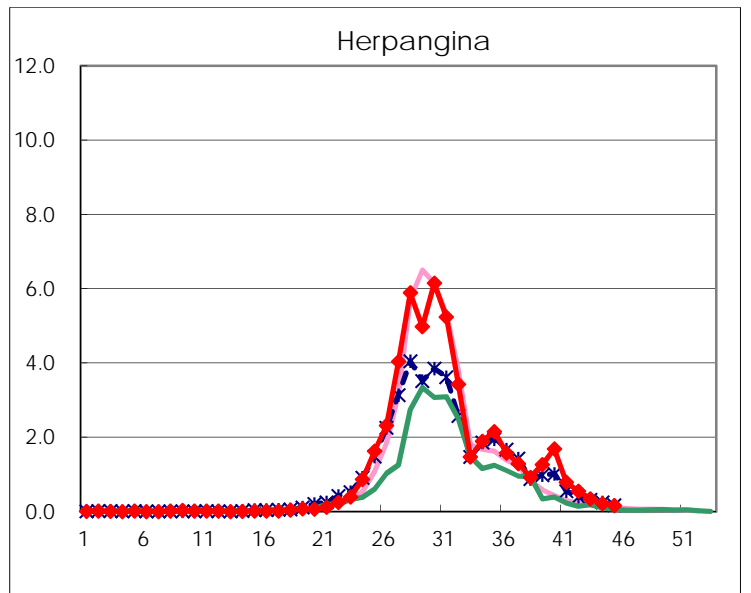
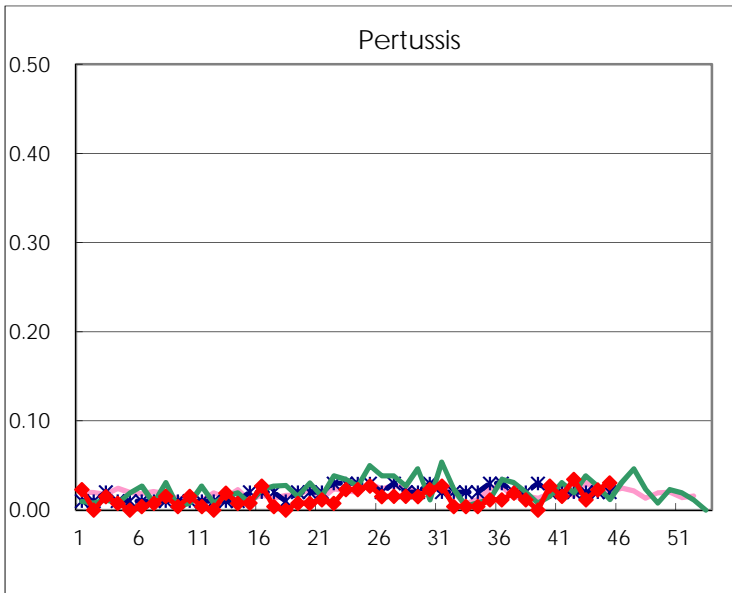
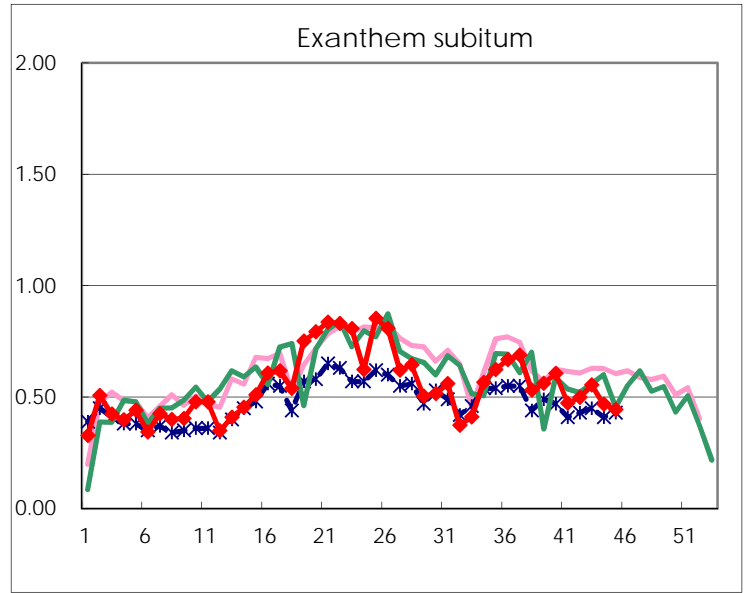
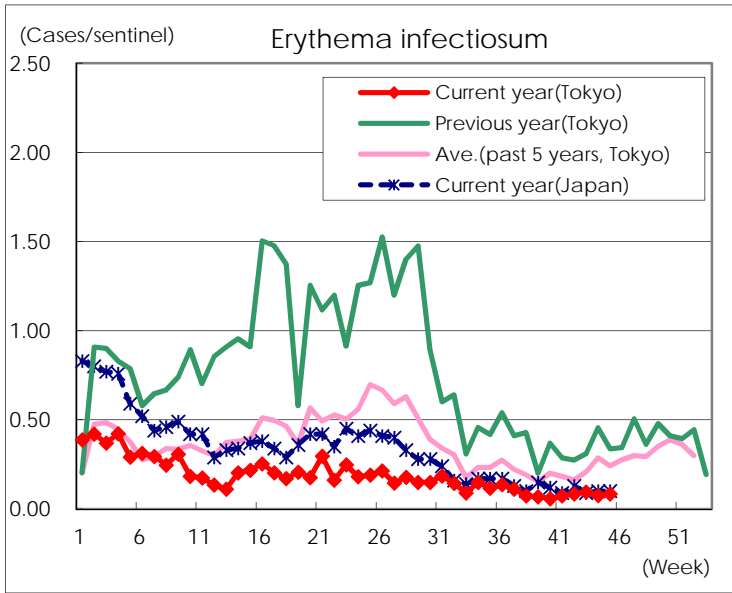
Number of patients with the diseases to be reported
by the designated clinics and hospitals

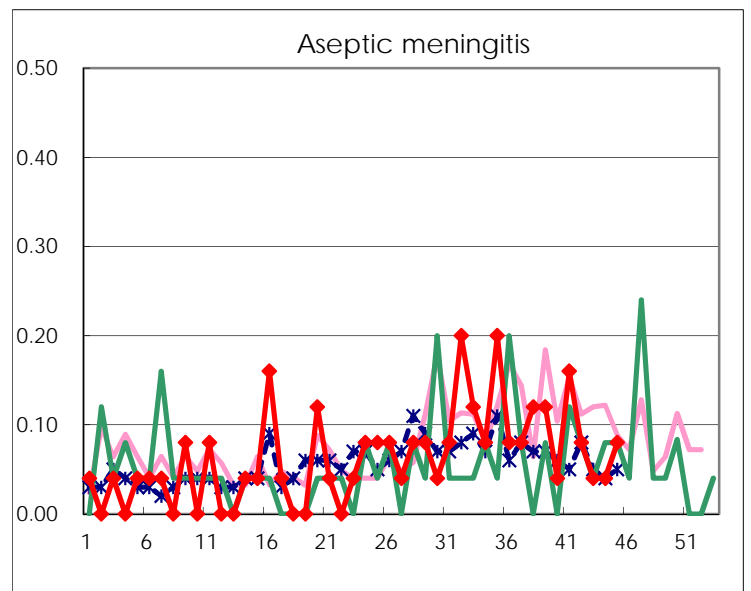
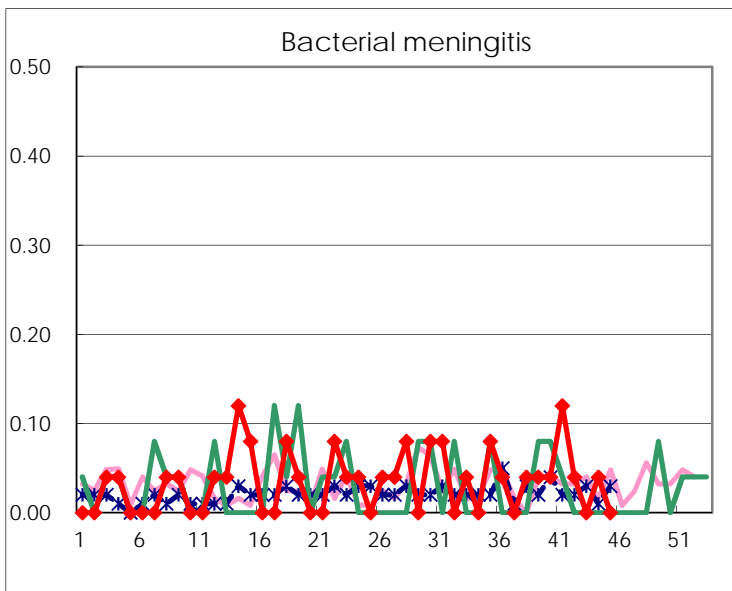
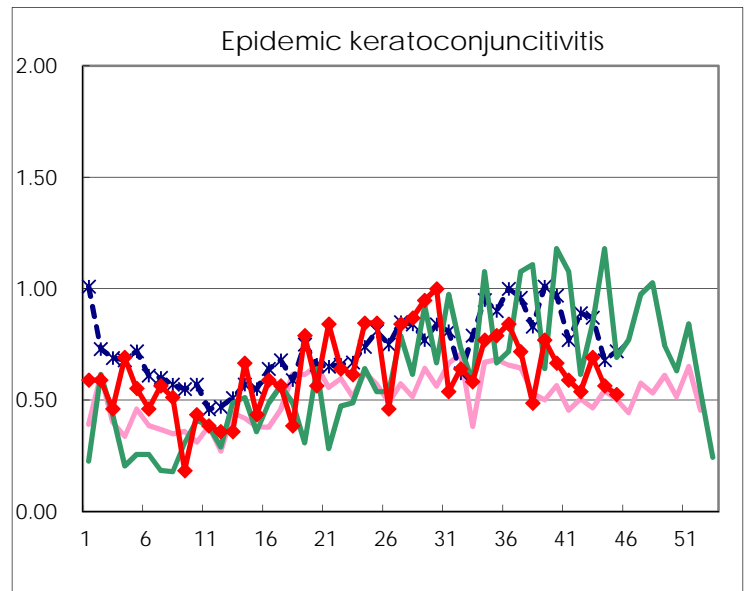
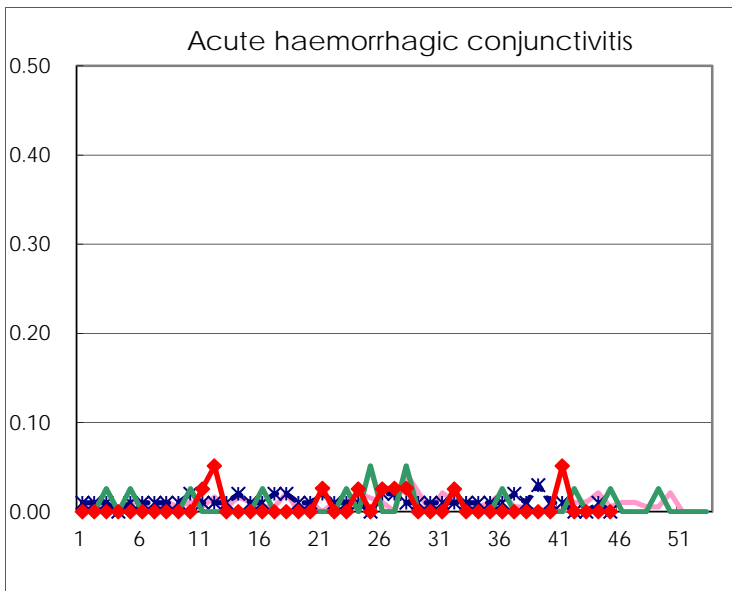
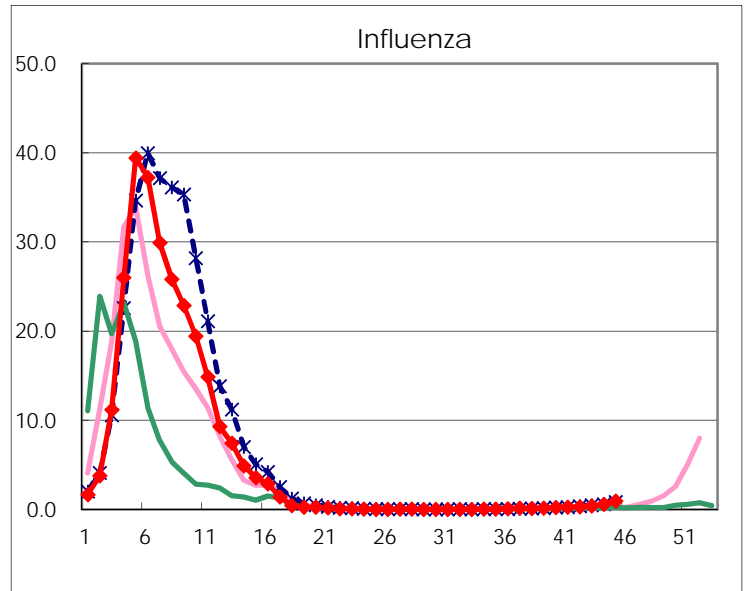
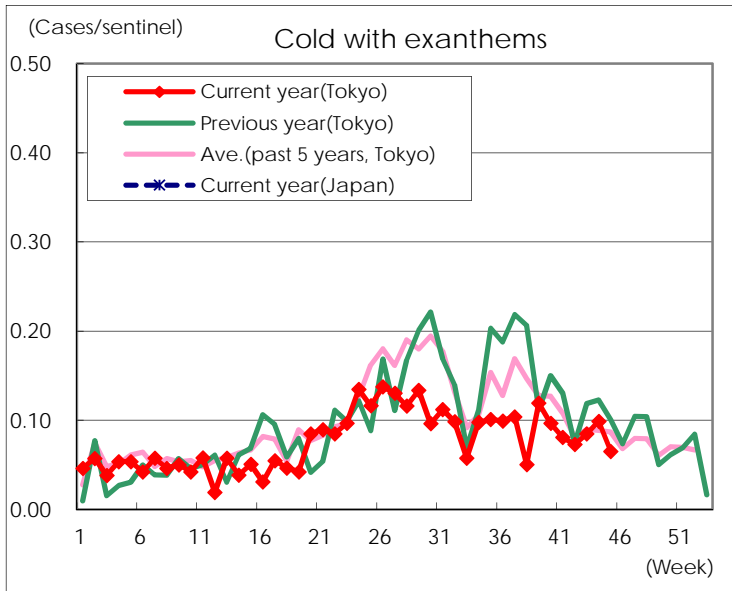
Diseases	Tokyo				
	42nd	43rd	44th	45th	/sentinel
Respiratory syncytial virus infection	436	311	155	142	0.54
Pharyngoconjunctival fever	62	63	53	61	0.23
Group A streptococcal pharyngitis	491	456	488	599	2.30
Infectious gastroenteritis	1,338	1,681	2,486	3,575	13.70
Chickenpox	91	93	76	128	0.49
Hand, foot, and mouth disease	371	339	265	176	0.67
Erythema infectiosum	22	25	20	22	0.08
Exanthem subitum	130	144	123	116	0.44
Pertussis	9	3	6	8	0.03
Herpangina	144	90	57	44	0.17
Mumps	247	189	216	236	0.90
Kawasaki disease	3	10	1	3	0.01
Cold with exanthems	19	22	26	17	0.07
Influenza	126	159	242	390	0.94
Acute hemorrhagic conjunctivitis					
Epidemic keratoconjunctivitis	21	27	22	20	0.53
Bacterial meningitis	1		1		
Aseptic meningitis	2	1	1	2	0.08
Mycoplasma pneumonia	41	46	33	48	1.92
Chlamydial pneumonia (excluding psittacosis)	1	1		2	0.08
Infectious gastroenteritis (only by Rotavirus)	1	4	2	1	0.04
Influenza-Associated Hospitalizations	2	4		1	0.04

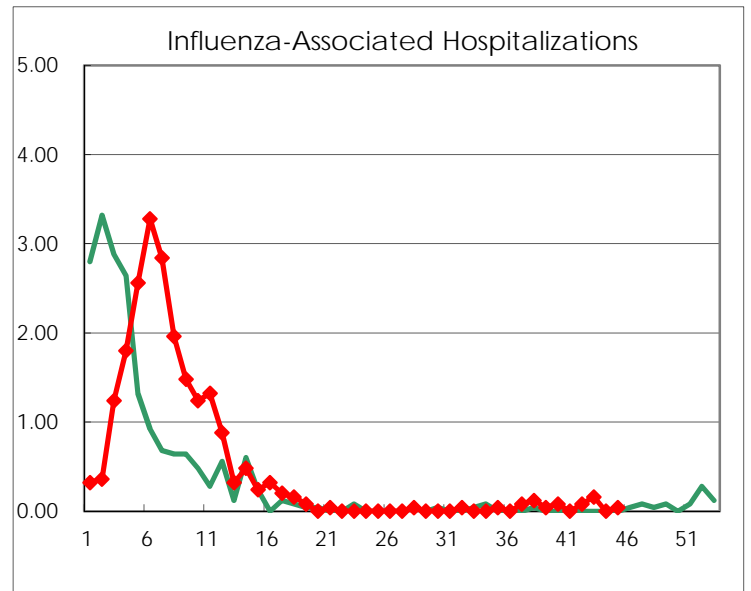
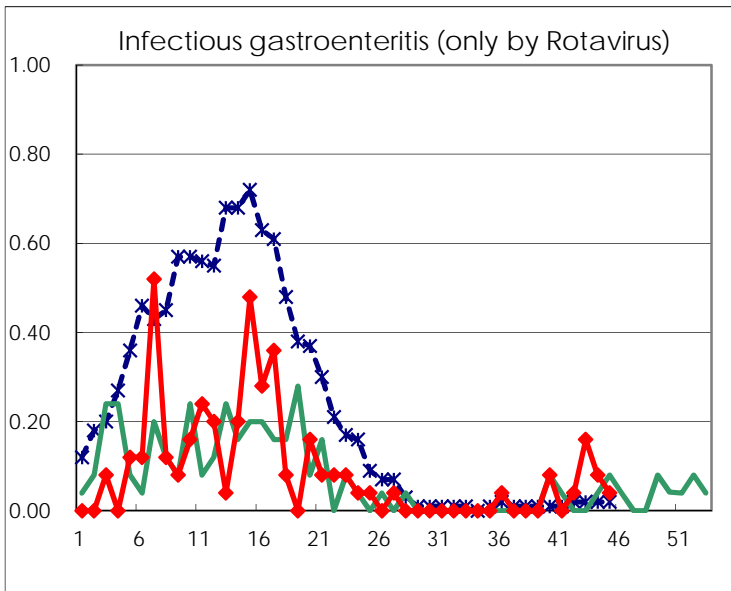
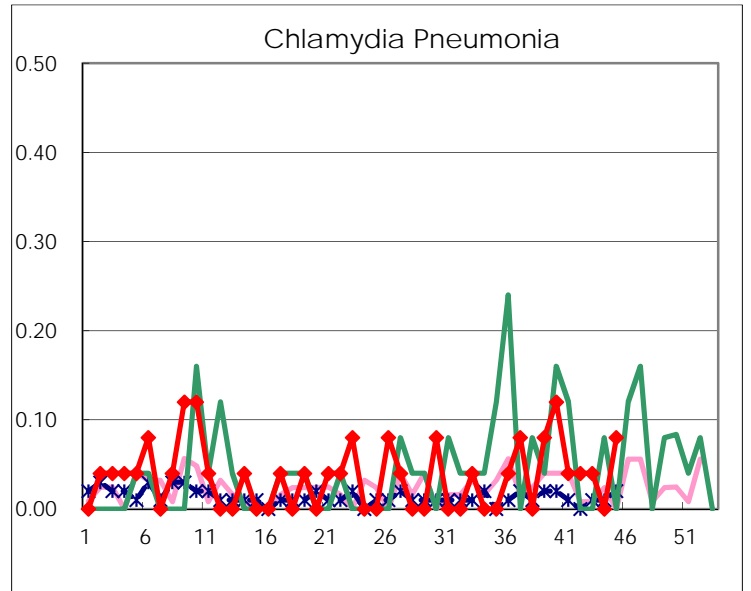
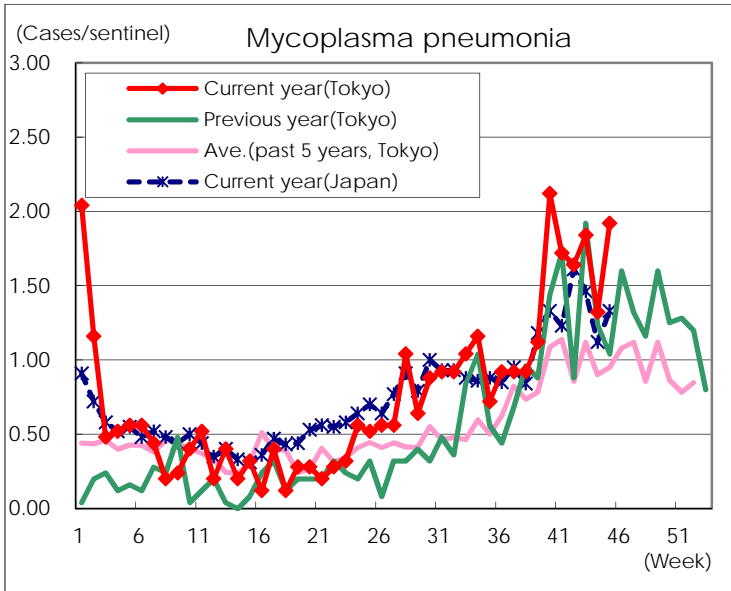
(Blank means 0.)

Disease Trend Graph (weekly reported cases per sentinel in comparison)









Number of sentinel facilities for weekly reporting		
Types of sentinels	Number of sentinels	Sentinels having reported
Pediatric	264	261
Influenza	419	414
Ophthalmic	39	38
Specially-designated	25	25