

25 November 2016 / Number 46

Surveillance System in Tokyo, Japan

The infectious diseases which all physicians must report

All physicians must report to health centers the incidence of the diseases which are shown at page one. Health centers electronically report the individual cases to Tokyo Metropolitan Infectious Disease Surveillance Center.

The infectious diseases required to be reported by the sentinels

The numbers of patients who visit the sentinel clinics or hospitals during a week are reported to health centers in Tokyo. And they electronically report the numbers to Tokyo Metropolitan Infectious Disease Surveillance Center. We have about 500 sentinel clinics and hospitals in Tokyo.

Tokyo Metropolitan Institute of Public Health

TEL:81-3-3363-3213 FAX:81-3-5332-7365

e-mail:www@tokyo-eiken.go.jp

URL:idsc.tokyo-eiken.go.jp/

Number of patients with the diseases which all physicians must report

Category	Diseases	Tokyo					Japan	
		43rd	44th	45th	46th	Cum 2016	46th	Cum 2016
I	Ebola hemorrhagic fever							
	Crimean-Congo hemorrhagic fever							
	Smallpox							
	South American hemorrhagic fever							
	Plague							
	Marburg disease							
II	Lassa fever							
	Acute poliomyelitis							
	Tuberculosis	77	89	61	51	3,251	348	21,282
	Diphtheria							
	Severe Acute Respiratory Syndrome(SARS)							
	Middle East Respiratory Syndrome (MERS)							
III	Avian influenza H5N1							
	Avian influenza H7N9							
	Cholera	1				2		9
	Shigellosis		1		1	36	2	112
	Enterohemorrhagic Escherichia coli infection	10	5	6	5	432	44	3,450
IV	Typhoid fever					17		43
	Paratyphoid fever		1			8		19
	Hepatitis E				2	34	1	324
	West Nile fever							
	Hepatitis A	1	1		1	63	2	254
	Echinococcosis							18
	Yellow fever							
	Psittacosis			1		2		5
	Omsk hemorrhagic fever							
	Relapsing fever							7
	Kyasanur forest disease							
	Q fever							
	Rabies							
	Coccidioidomycosis					2		3
	Monkeypox							
	Zika virus infection					2		9
	Severe Fever with Thrombocytopenia Syndrome							57
	Hemorrhagic fever with renal syndrome							
	Western equine encephalitis							
	Tick-borne encephalitis							1
	Anthrax							
	Chikungunya fever					4		13
	Scrub typhus(Tsutsugamushi disease)		2		3	5	57	237
	Dengue fever	3	1	1		86	2	317
	Eastern equine encephalitis							
	Avian influenza (excluding H5N1 and H7N9)							
	Nipah virus infection							
	Japanese spotted fever						5	267
	Japanese encephalitis							10
	Hantavirus pulmonary syndrome							
	Herpes B virus infection							
	Glanders							
Brucellosis					1		2	
Venezuelan equine encephalitis								
Hendra virus infection								
Epidemic typhus								
Botulism					1		5	
Malaria				1	18	2	48	
Tularemia								
Lyme disease							8	
Lyssavirus infection(excluding rabies)								
Rift valley fever								
Melioidosis								
Legionellosis	6		3	5	130	31	1,441	
Leptospirosis					7	1	72	
Rocky mountain spotted fever								

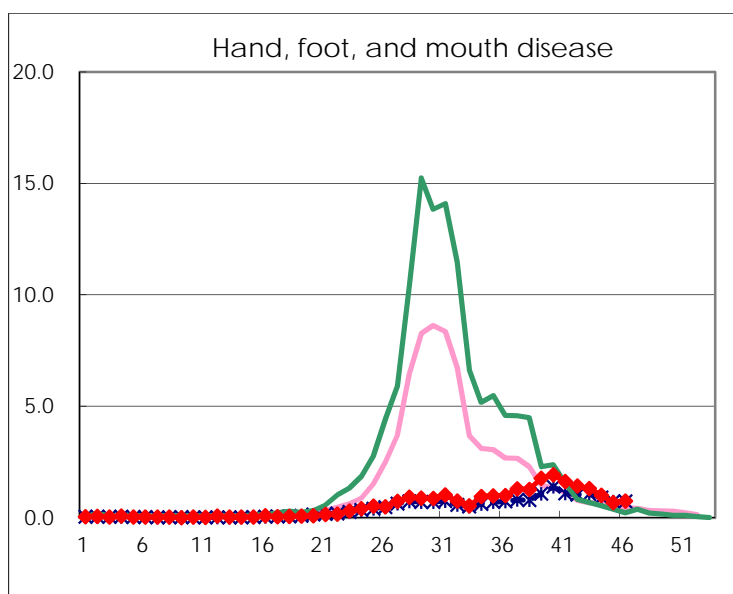
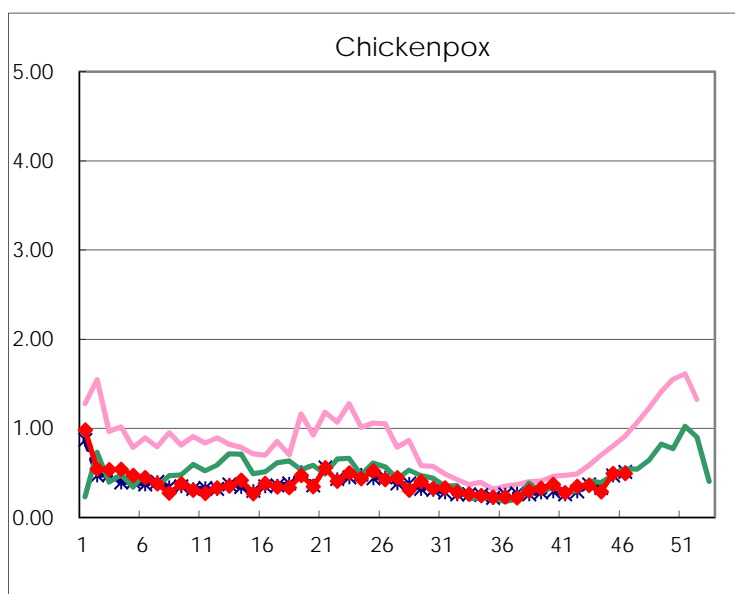
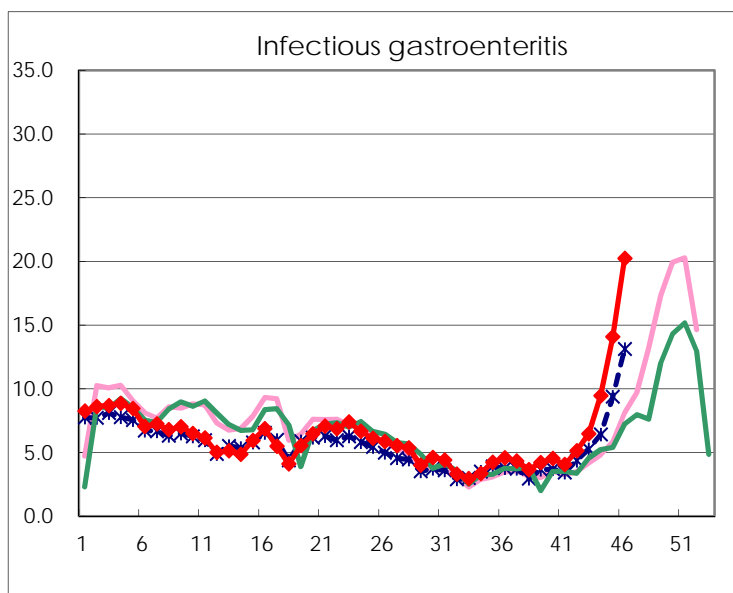
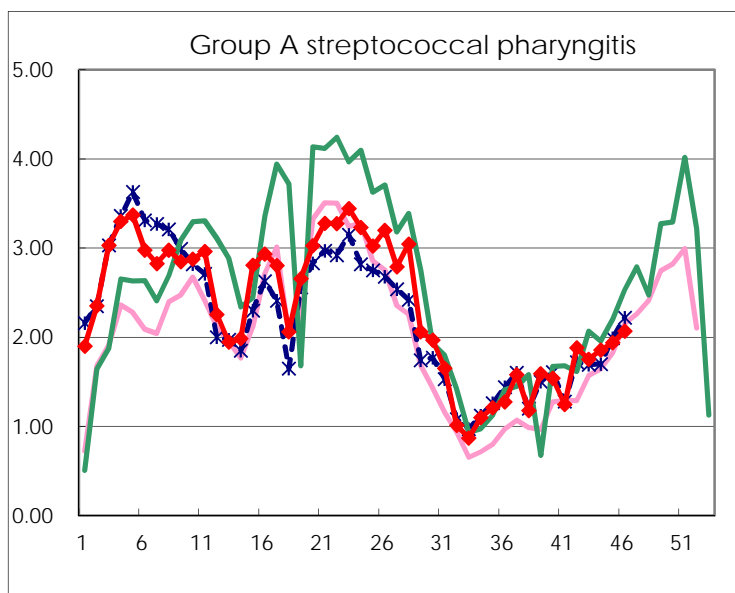
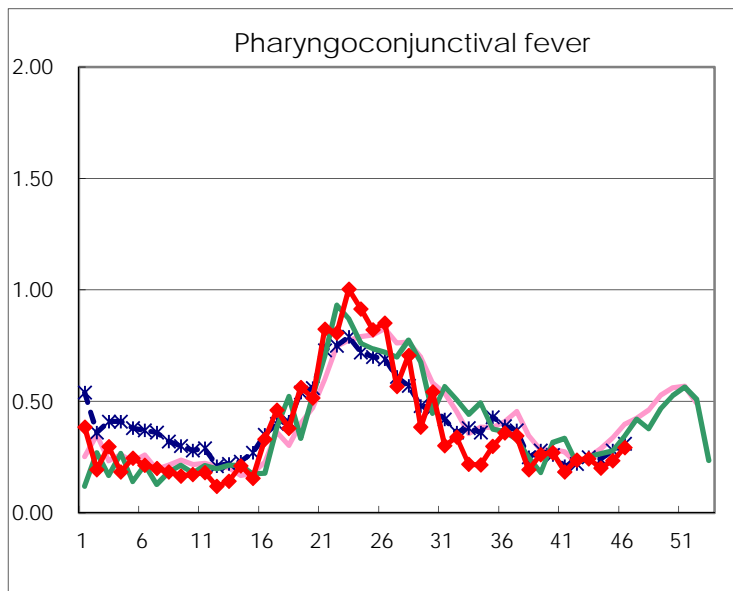
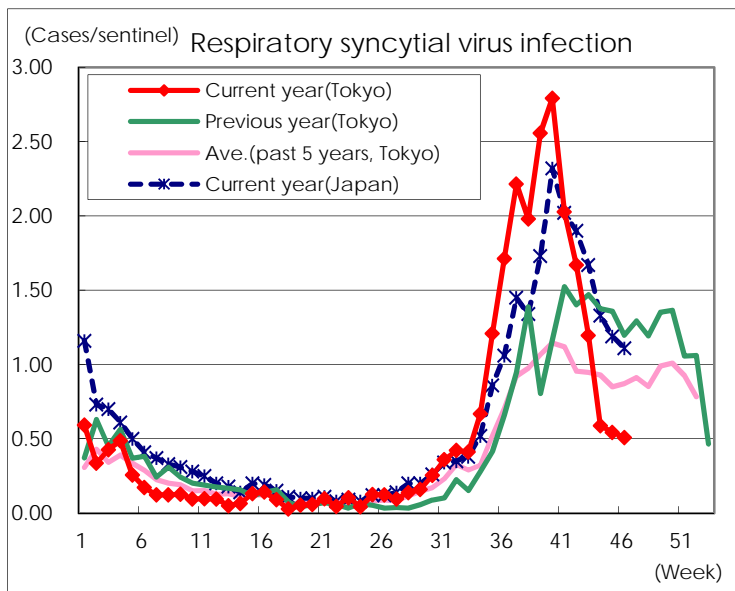
Category	Diseases	Tokyo					Japan	
		43rd	44th	45th	46th	Cum 2016	46th	Cum 2016
V	Amebiasis	5	1	3	2	198	10	998
	Viral hepatitis(excluding hepatitis A and E)	2	1	1		64	2	251
	CRE infection	2	5	3	5	174	23	1,365
	Acute encephalitis(excluding JE and WNE)				1	81	4	678
	Cryptosporidiosis					1		13
	Creutzfeldt-Jakob disease		1			15	2	156
	Severe invasive streptococcal infections(TSLS)		1		1	60	1	442
	Acquired immunodeficiency syndrome (AIDS)	8	9	5	5	421	17	1,269
	Giardiasis					15		61
	Invasive <i>Haemophilus influenzae</i> disease	1	1			42	3	266
	Invasive meningococcal disease			1		5	1	40
	Invasive pneumococcal disease	4	6	12	6	299	28	2,261
	Varicella (limited to hospitalized case)	1	1	1	2	48	2	266
	Congenital rubella syndrome							
	Syphilis	20	29	29	42	1,507	69	3,989
	Disseminated cryptococcosis				2	17	5	116
	Tetanus					4	2	116
	Vancomycin-resistant <i>S. aureus</i> infection							
	Vancomycin-resistant Enterococcus infection					2		48
	Rubella	1		2	1	19	2	121
Measles					22	1	153	
MDRA infection					1		32	

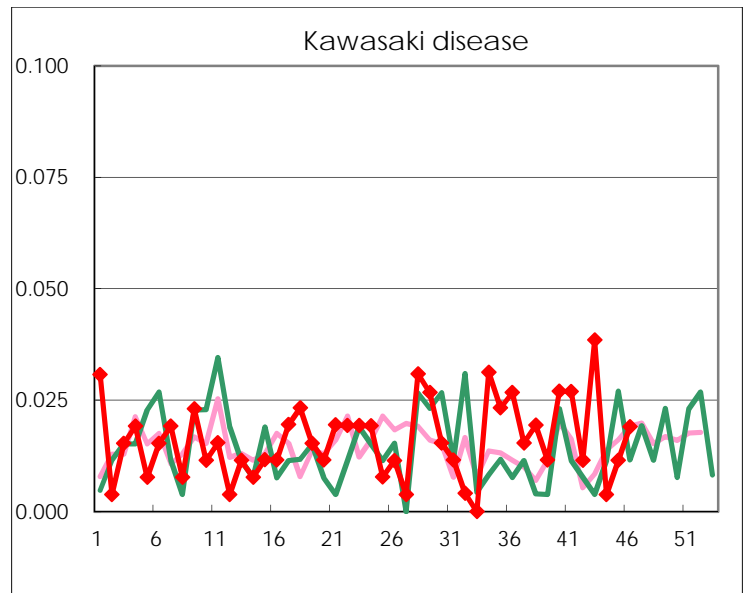
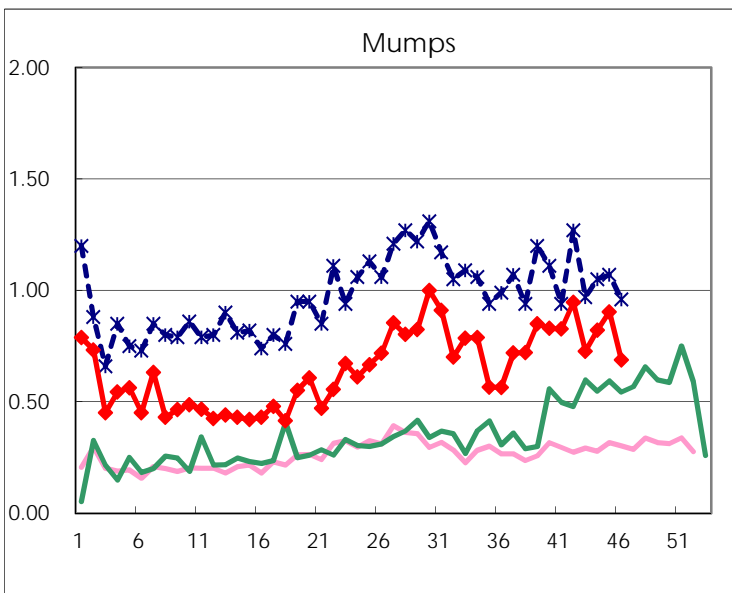
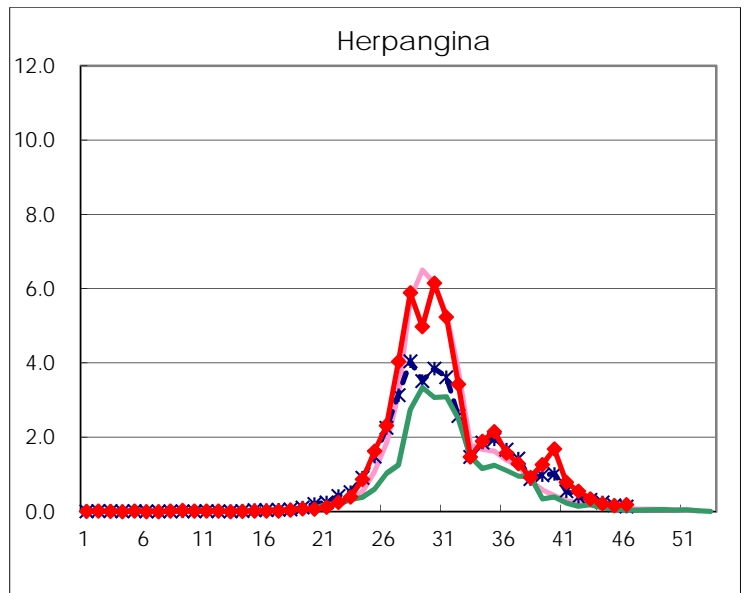
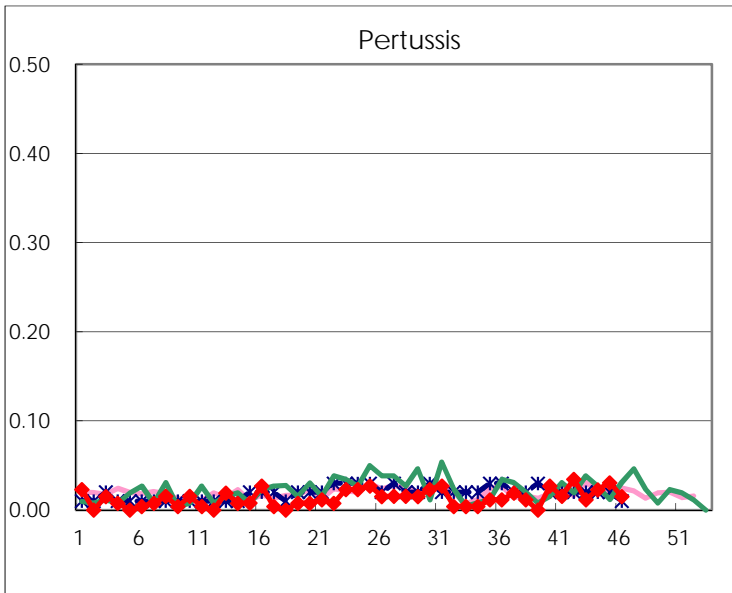
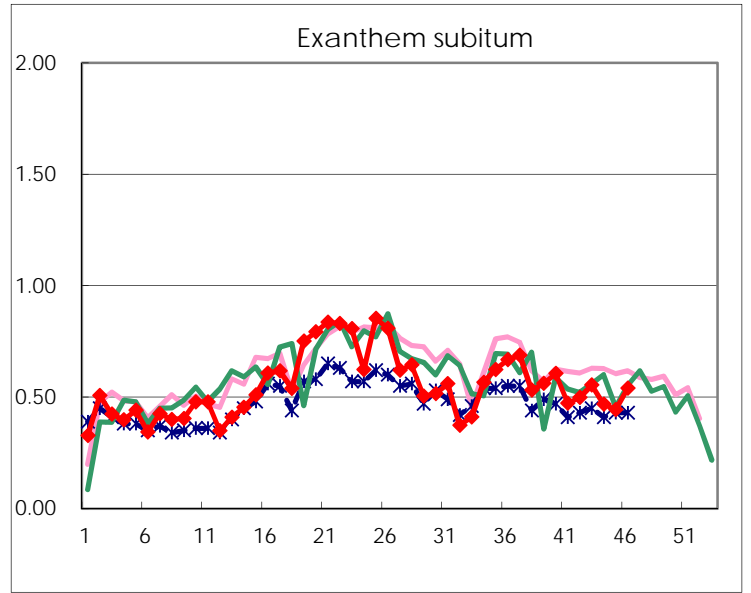
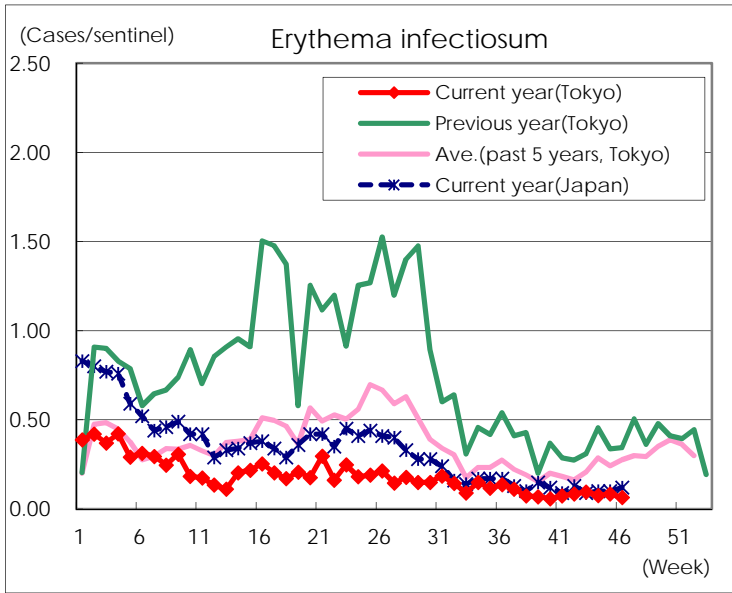
Number of patients with the diseases to be reported
by the designated clinics and hospitals

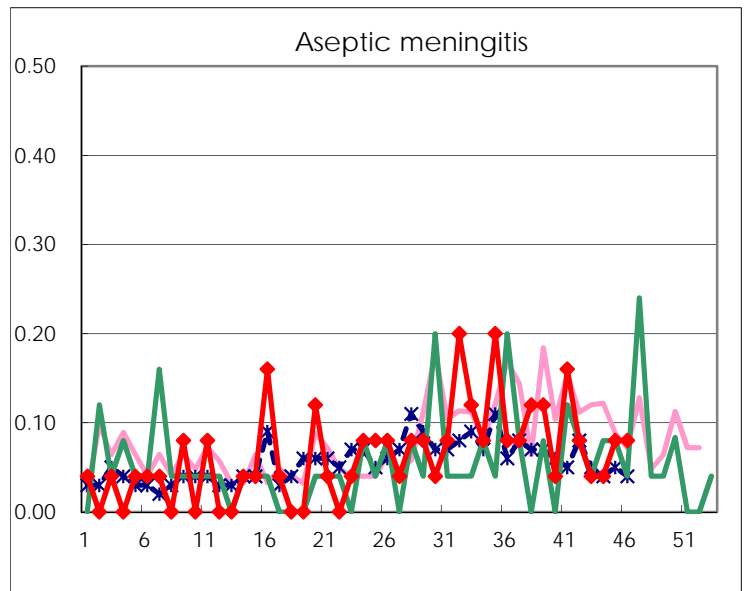
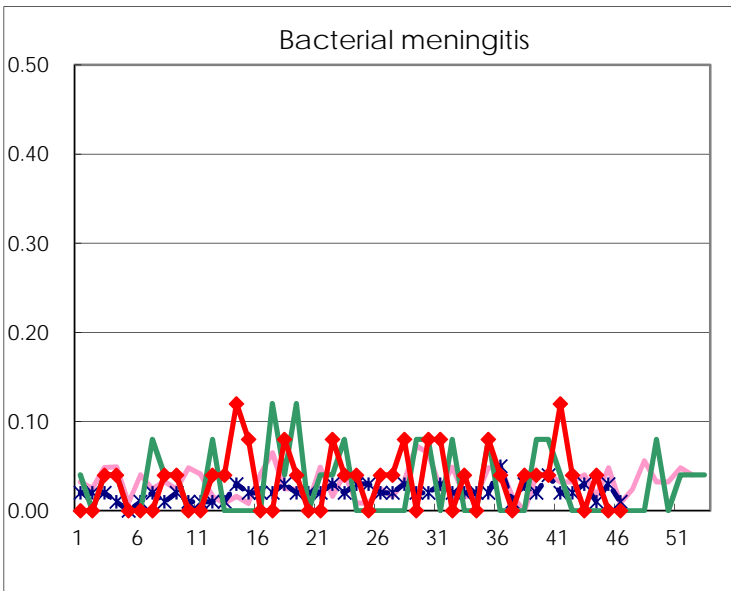
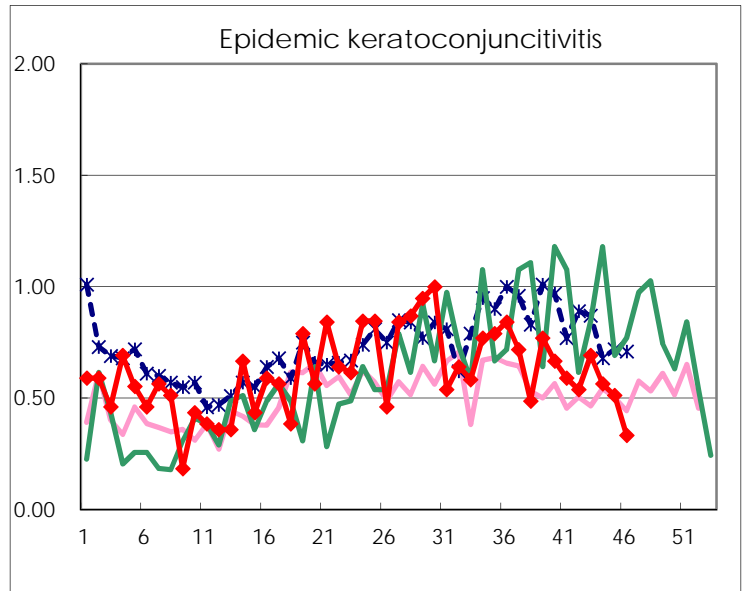
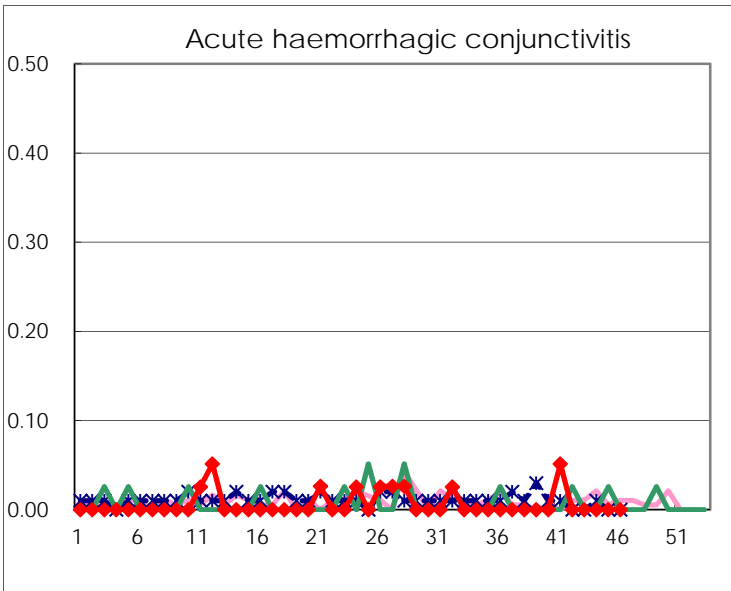
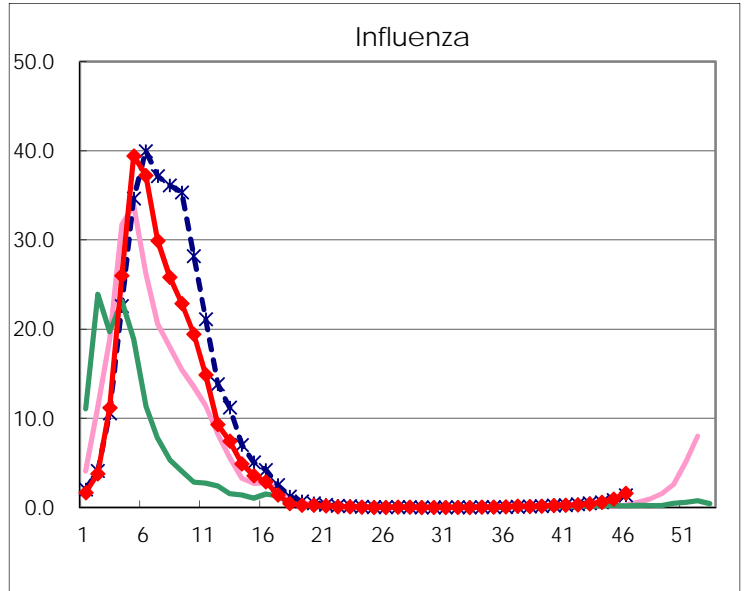
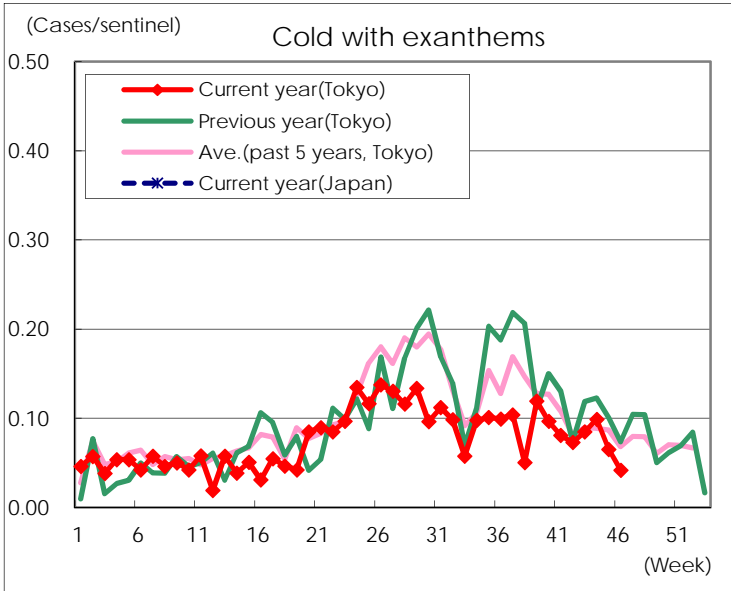
Diseases	Tokyo				
	43rd	44th	45th	46th	/sentinel
Respiratory syncytial virus infection	311	155	142	134	0.51
Pharyngoconjunctival fever	63	53	61	77	0.29
Group A streptococcal pharyngitis	456	488	506	544	2.07
Infectious gastroenteritis	1,681	2,486	3,671	5,322	20.24
Chickenpox	93	76	128	129	0.49
Hand, foot, and mouth disease	339	265	176	197	0.75
Erythema infectiosum	25	20	22	17	0.06
Exanthem subitum	144	123	116	142	0.54
Pertussis	3	6	8	4	0.02
Herpangina	90	57	44	50	0.19
Mumps	189	216	236	181	0.69
Kawasaki disease	10	1	3	5	0.02
Cold with exanthems	22	26	17	11	0.04
Influenza	159	242	390	652	1.57
Acute hemorrhagic conjunctivitis					
Epidemic keratoconjunctivitis	27	22	20	13	0.33
Bacterial meningitis		1			
Aseptic meningitis	1	1	2	2	0.08
Mycoplasma pneumonia	46	33	48	32	1.28
Chlamydial pneumonia (excluding psittacosis)	1		2	1	0.04
Infectious gastroenteritis (only by Rotavirus)	4	2	1	2	0.08
Influenza-Associated Hospitalizations	4		1	5	0.20

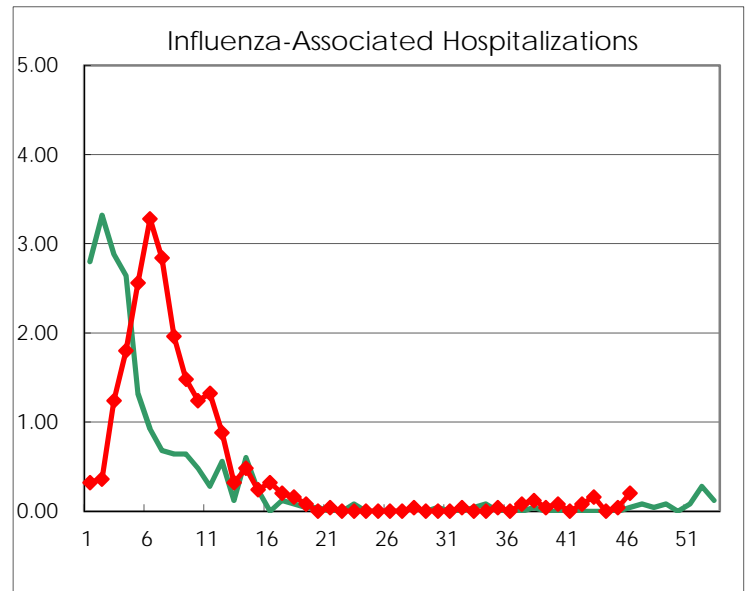
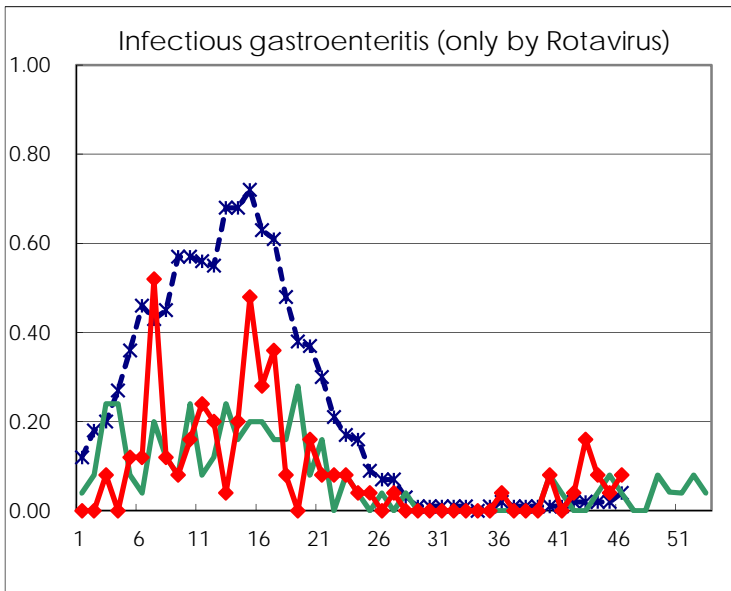
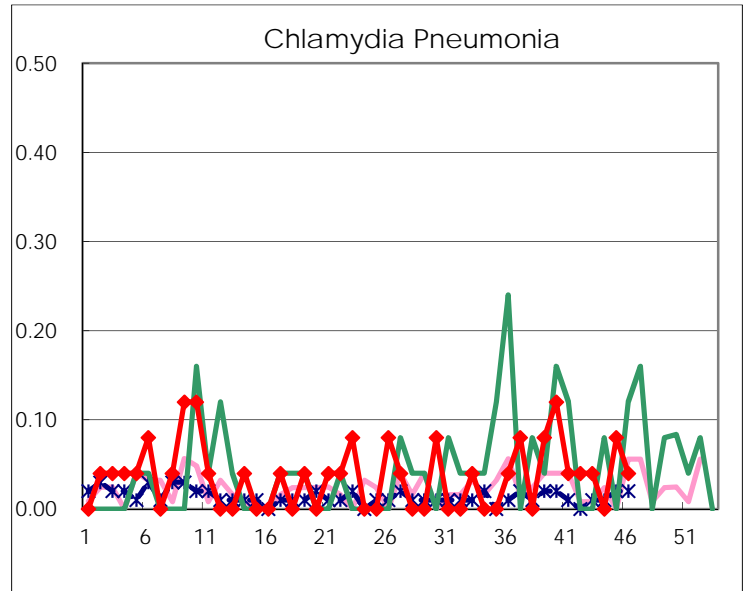
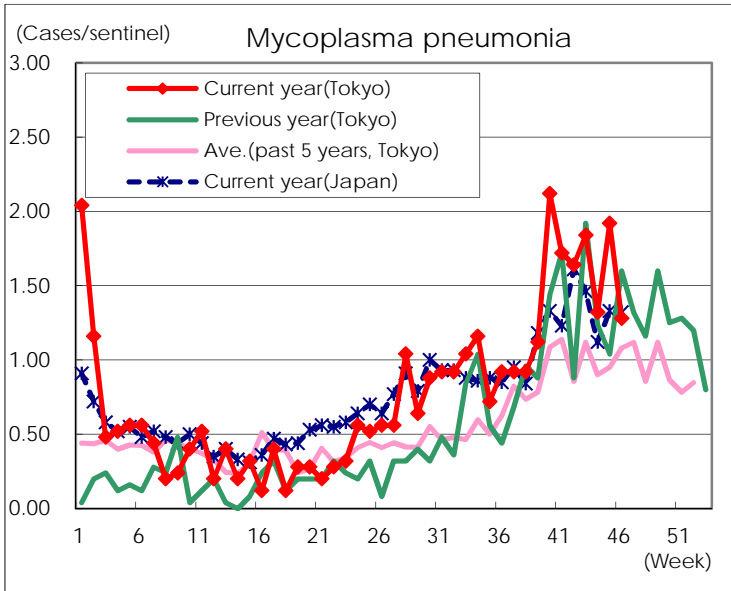
(Blank means 0.)

Disease Trend Graph (weekly reported cases per sentinel in comparison)









Number of sentinel facilities for weekly reporting		
Types of sentinels	Number of sentinels	Sentinels having reported
Pediatric	264	263
Influenza	419	415
Ophthalmic	39	39
Specially-designated	25	25