

## 1 December 2016 / Number 47

### Surveillance System in Tokyo, Japan

The infectious diseases which all physicians must report

All physicians must report to health centers the incidence of the diseases which are shown at page one. Health centers electronically report the individual cases to Tokyo Metropolitan Infectious Disease Surveillance Center.

The infectious diseases required to be reported by the sentinels

The numbers of patients who visit the sentinel clinics or hospitals during a week are reported to health centers in Tokyo. And they electronically report the numbers to Tokyo Metropolitan Infectious Disease Surveillance Center. We have about 500 sentinel clinics and hospitals in Tokyo.

Tokyo Metropolitan Institute of Public Health

TEL:81-3-3363-3213 FAX:81-3-5332-7365

e-mail:[www@tokyo-eiken.go.jp](mailto:www@tokyo-eiken.go.jp)

URL:[idsc.tokyo-eiken.go.jp/](http://idsc.tokyo-eiken.go.jp/)

---

Number of patients with the diseases which all physicians must report

Category	Diseases	Tokyo				Japan		
		44th	45th	46th	47th	Cum 2016	47th	Cum 2016
I	Ebola hemorrhagic fever							
	Crimean-Congo hemorrhagic fever							
	Smallpox							
	South American hemorrhagic fever							
	Plague							
	Marburg disease							
	Lassa fever							
II	Acute poliomyelitis							
	Tuberculosis	92	70	59	54	3,325	240	21,600
	Diphtheria							
	Severe Acute Respiratory Syndrome(SARS)							
	Middle East Respiratory Syndrome (MERS)							
	Avian influenza H5N1							
	Avian influenza H7N9							
III	Cholera					2		9
	Shigellosis	1		1	1	37	2	114
	Enterohemorrhagic Escherichia coli infection	5	6	5	5	437	36	3,491
	Typhoid fever					17		50
	Paratyphoid fever	1				8		19
IV	Hepatitis E			2		34	1	325
	West Nile fever							
	Hepatitis A	1		1		63	2	256
	Echinococcosis							19
	Yellow fever							
	Psittacosis		1			2		5
	Omsk hemorrhagic fever							
	Relapsing fever							7
	Kyasanur forest disease							
	Q fever							
	Rabies							
	Coccidioidomycosis					2		3
	Monkeypox							
	Zika virus infection				1	3	2	11
	Severe Fever with Thrombocytopenia Syndrome							57
	Hemorrhagic fever with renal syndrome							
	Western equine encephalitis							
	Tick-borne encephalitis							1
	Anthrax							
	Chikungunya fever					4		13
	Scrub typhus(Tsutsugamushi disease)	2		3		5	34	277
	Dengue fever	1	1			86	3	320
	Eastern equine encephalitis							
	Avian influenza (excluding H5N1 and H7N9)							
	Nipah virus infection							
	Japanese spotted fever							267
	Japanese encephalitis							11
	Hantavirus pulmonary syndrome							
	Herpes B virus infection							
	Glanders							
	Brucellosis					1		2
	Venezuelan equine encephalitis							
Hendra virus infection								
Epidemic typhus								
Botulism					1		5	
Malaria			1		18	1	49	
Tularemia								
Lyme disease							8	
Lyssavirus infection(excluding rabies)								
Rift valley fever								
Melioidosis								
Legionellosis		3	5	1	131	22	1,466	
Leptospirosis					7		72	
Rocky mountain spotted fever								

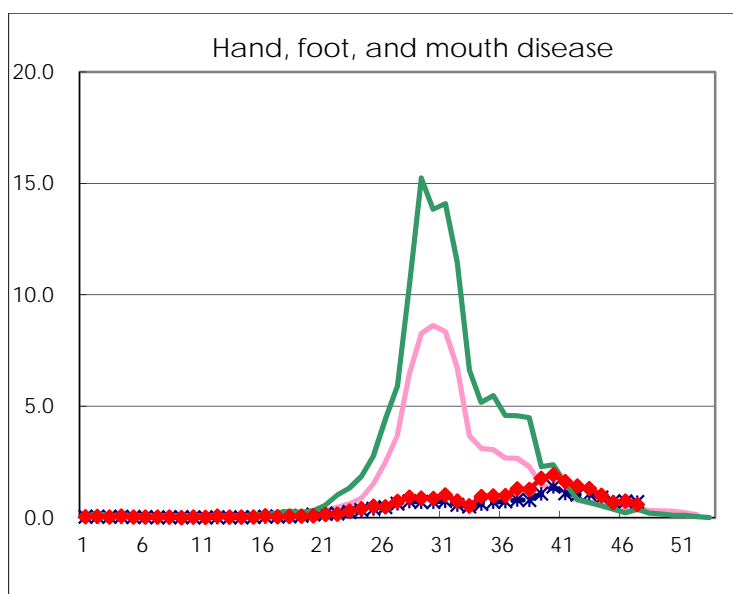
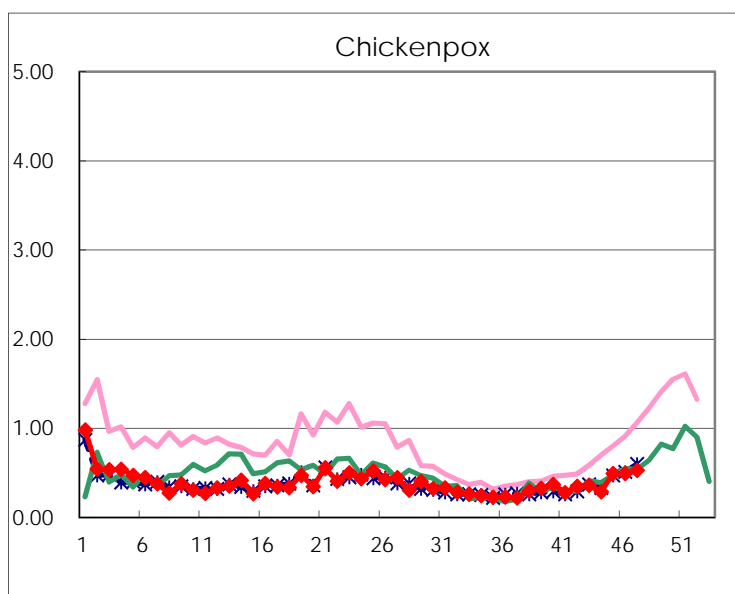
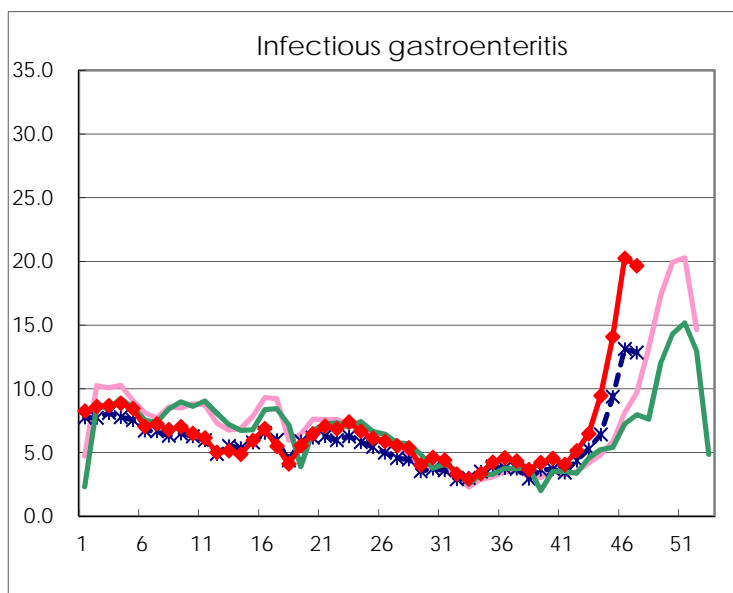
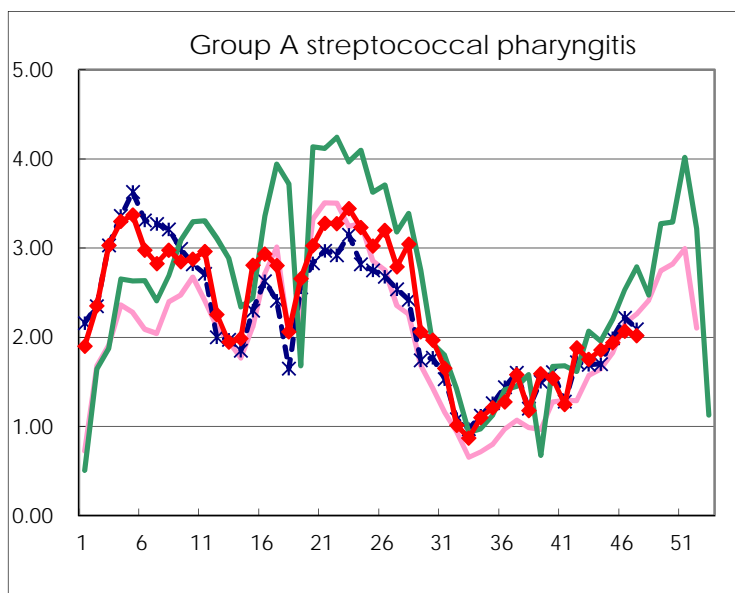
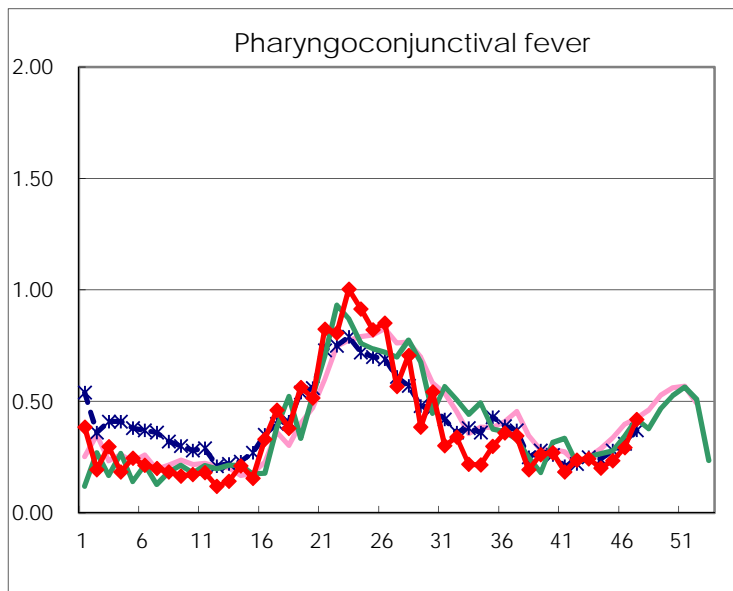
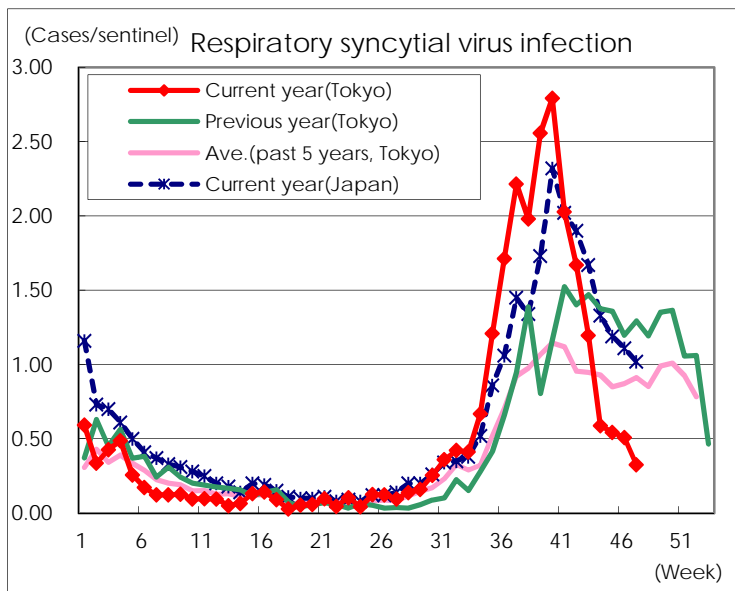
Category	Diseases	Tokyo					Japan	
		44th	45th	46th	47th	Cum 2016	47th	Cum 2016
V	Amebiasis	1	3	2	2	200	12	1,015
	Viral hepatitis(excluding hepatitis A and E)	1	1		1	65	1	253
	CRE infection	5	3	5	2	176	14	1,398
	Acute encephalitis(excluding JE and WNE)			1		81	5	688
	Cryptosporidiosis				1	2	1	14
	Creutzfeldt-Jakob disease	1				15	2	158
	Severe invasive streptococcal infections(TSLS)	1		1	2	62	6	449
	Acquired immunodeficiency syndrome (AIDS)	9	5	5	6	427	10	1,294
	Giardiasis					15	3	64
	Invasive <i>Haemophilus influenzae</i> disease	1				42	7	274
	Invasive meningococcal disease		1			5	1	41
	Invasive pneumococcal disease	6	12	6	5	304	43	2,326
	Varicella (limited to hospitalized case)	1	1	2	1	49	2	270
	Congenital rubella syndrome							
	Syphilis	29	29	42	29	1,536	57	4,077
	Disseminated cryptococcosis			2		17		116
	Tetanus					4	1	118
	Vancomycin-resistant <i>S. aureus</i> infection							
	Vancomycin-resistant Enterococcus infection					2	2	51
	Rubella		2	1		19	2	123
Measles					22	2	155	
MDRA infection					1	1	33	

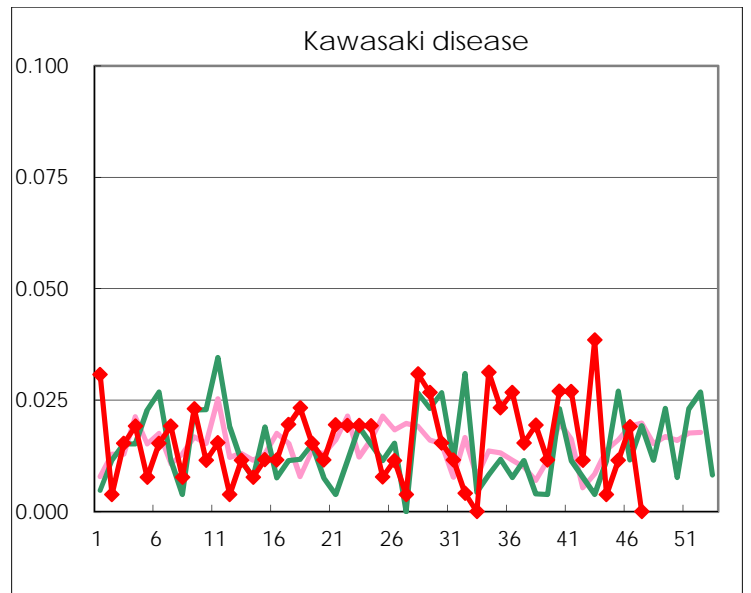
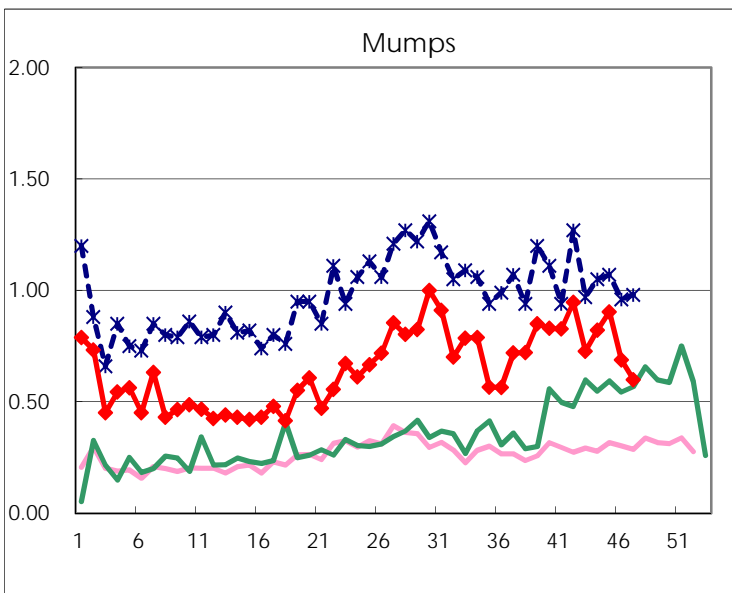
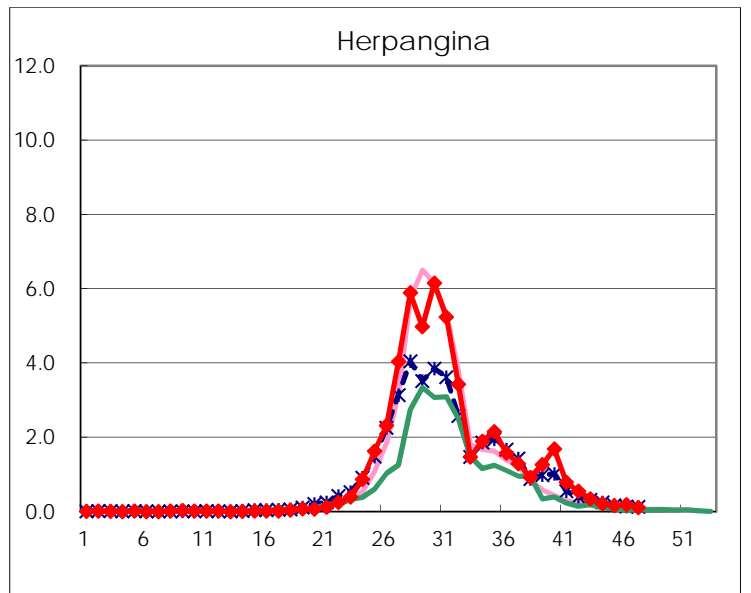
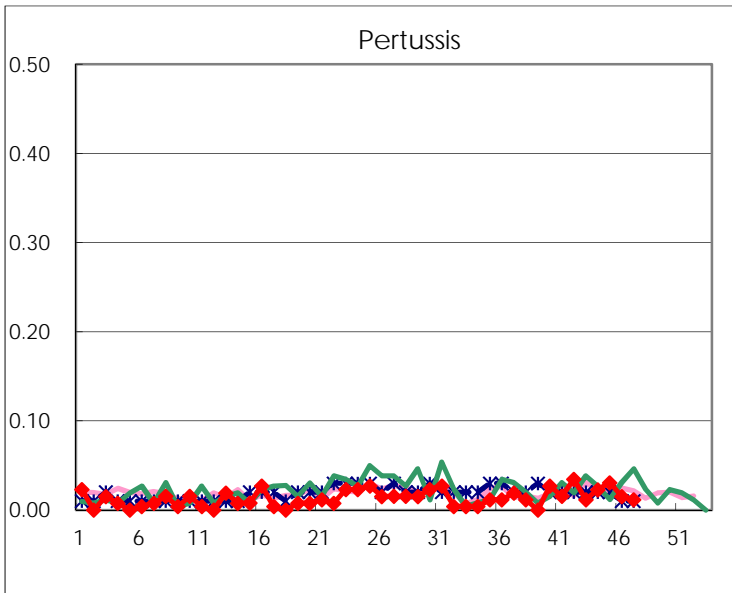
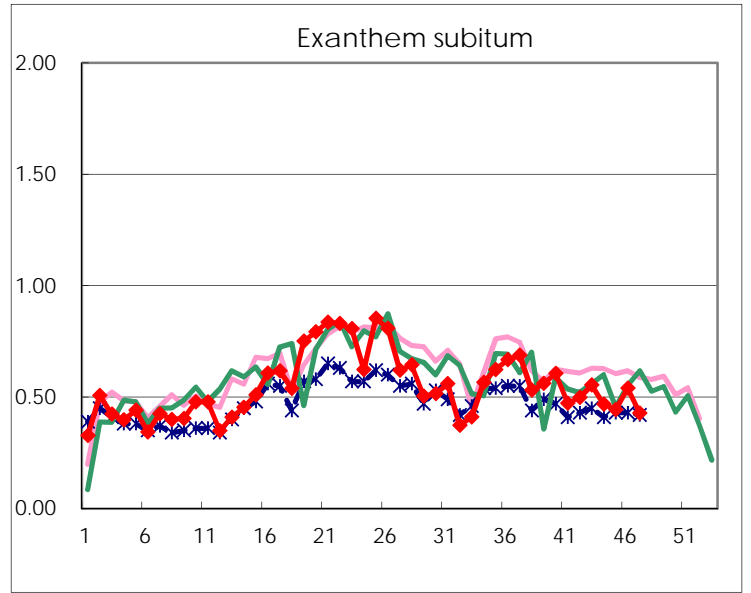
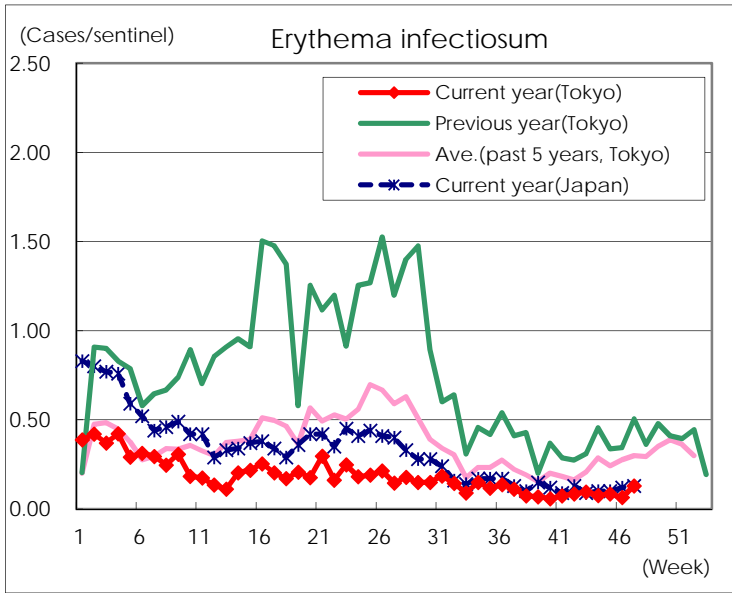
Number of patients with the diseases to be reported  
by the designated clinics and hospitals

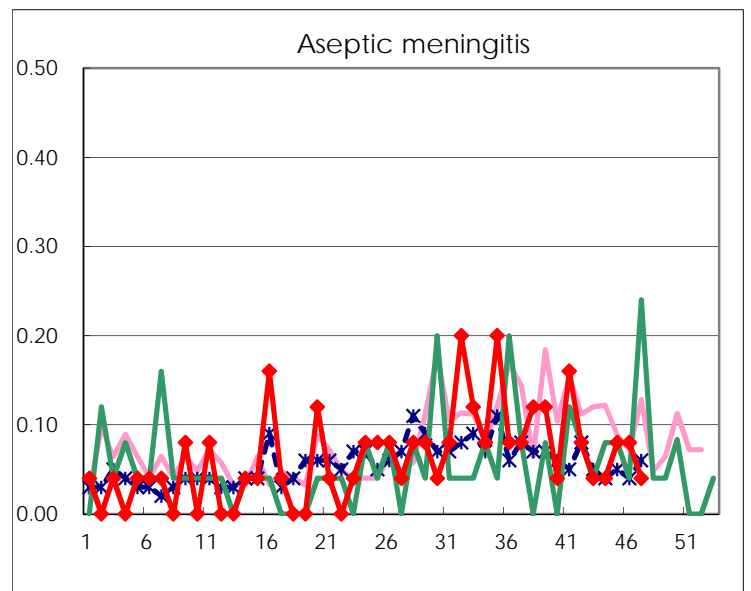
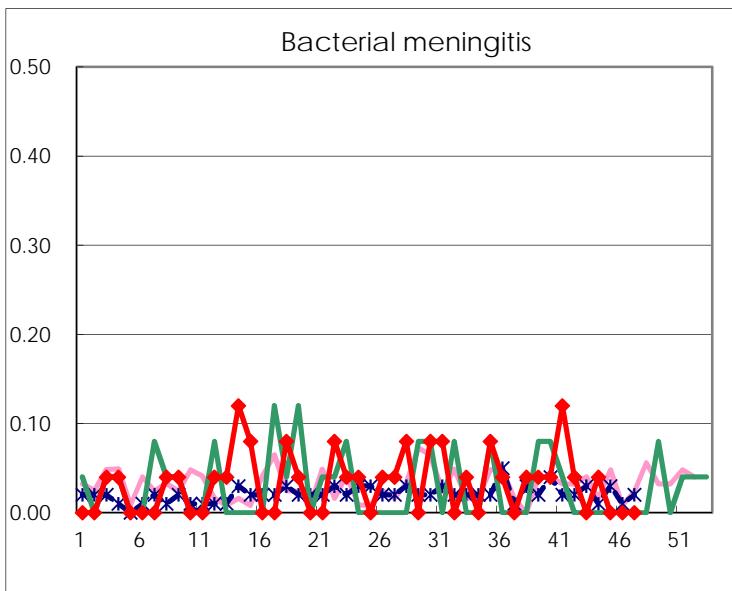
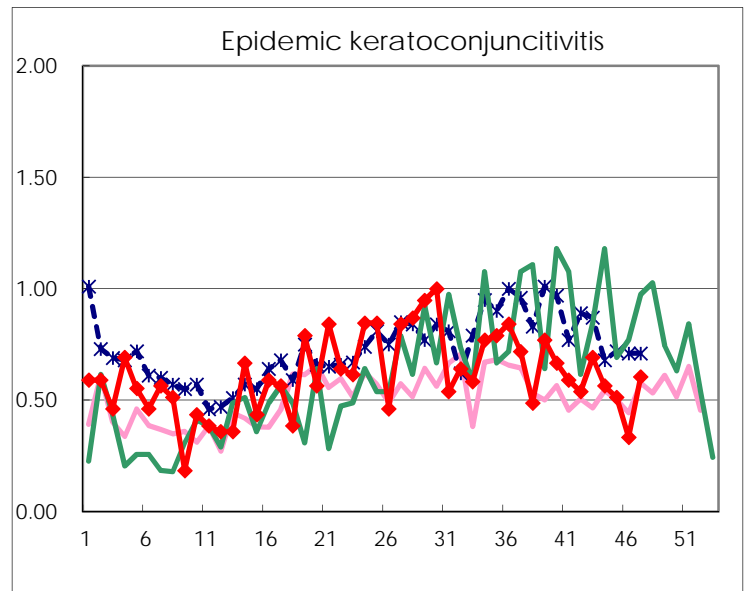
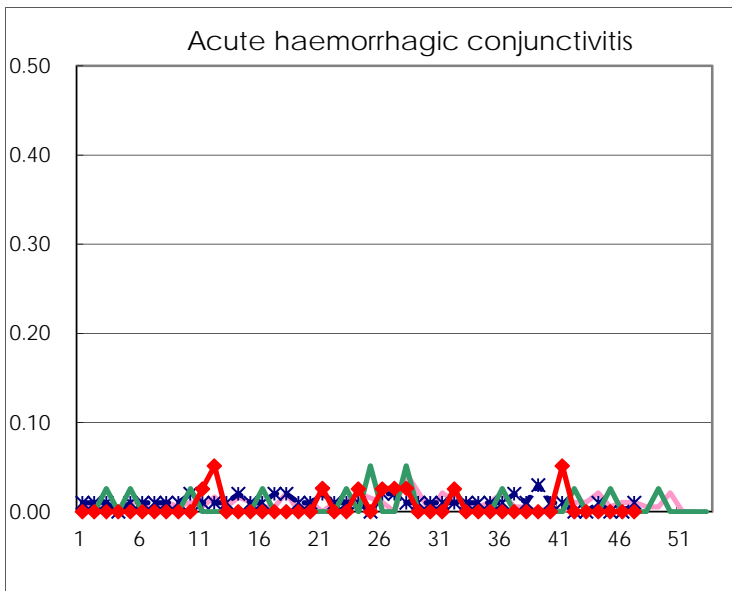
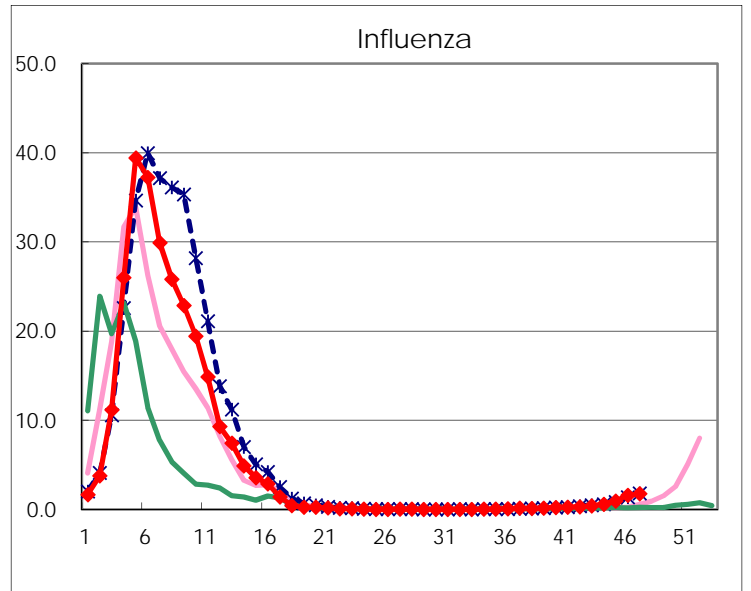
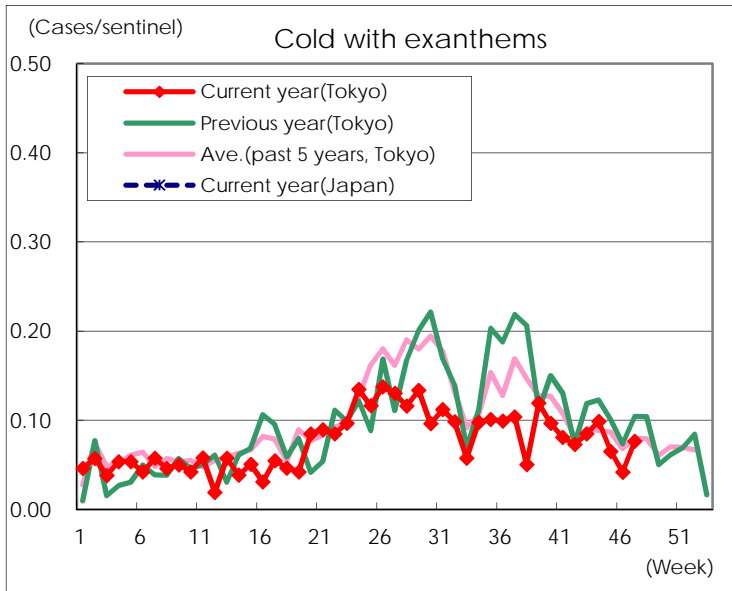
Diseases	Tokyo				
	44th	45th	46th	47th	/sentinel
Respiratory syncytial virus infection	155	142	134	85	0.32
Pharyngoconjunctival fever	53	61	77	110	0.42
Group A streptococcal pharyngitis	488	506	544	529	2.02
Infectious gastroenteritis	2,486	3,671	5,322	5,151	19.66
Chickenpox	76	128	129	138	0.53
Hand, foot, and mouth disease	265	176	197	154	0.59
Erythema infectiosum	20	22	17	34	0.13
Exanthem subitum	123	116	142	112	0.43
Pertussis	6	8	4	3	0.01
Herpangina	57	44	50	29	0.11
Mumps	216	236	181	157	0.60
Kawasaki disease	1	3	5		
Cold with exanthems	26	17	11	20	0.08
Influenza	242	390	652	727	1.75
Acute hemorrhagic conjunctivitis					
Epidemic keratoconjunctivitis	22	20	13	23	0.61
Bacterial meningitis	1				
Aseptic meningitis	1	2	2	1	0.04
Mycoplasma pneumonia	33	48	32	28	1.12
Chlamydial pneumonia (excluding psittacosis)		2	1	3	0.12
Infectious gastroenteritis (only by Rotavirus)	2	1	2		
Influenza-Associated Hospitalizations		1	5	2	0.08

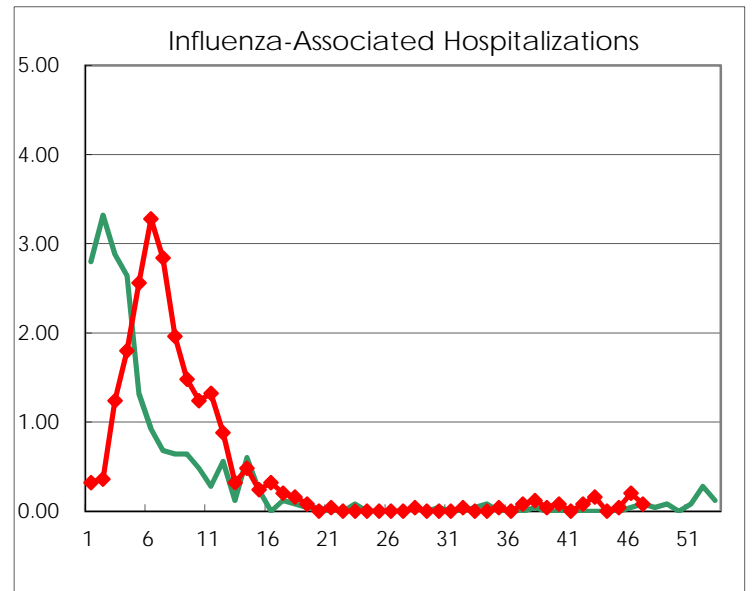
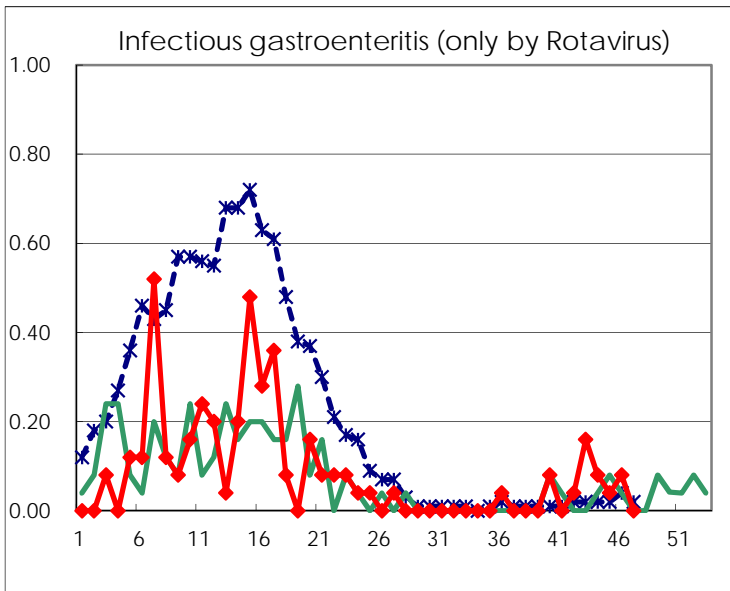
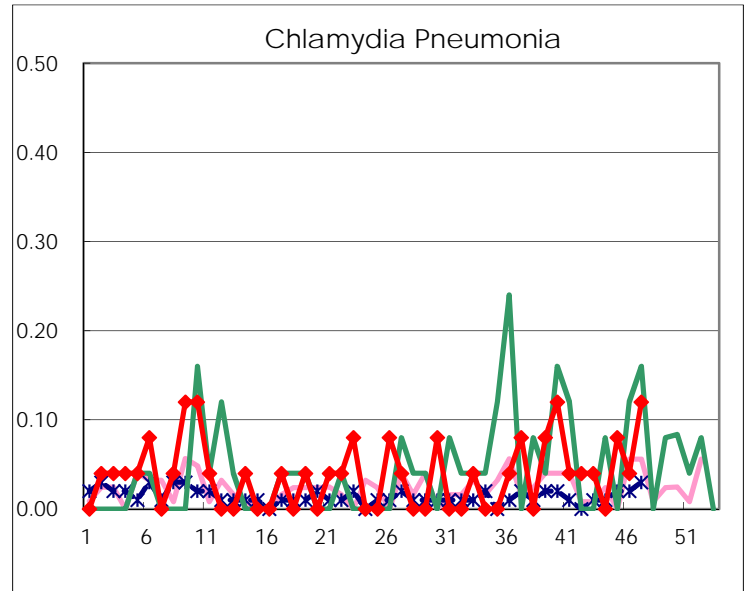
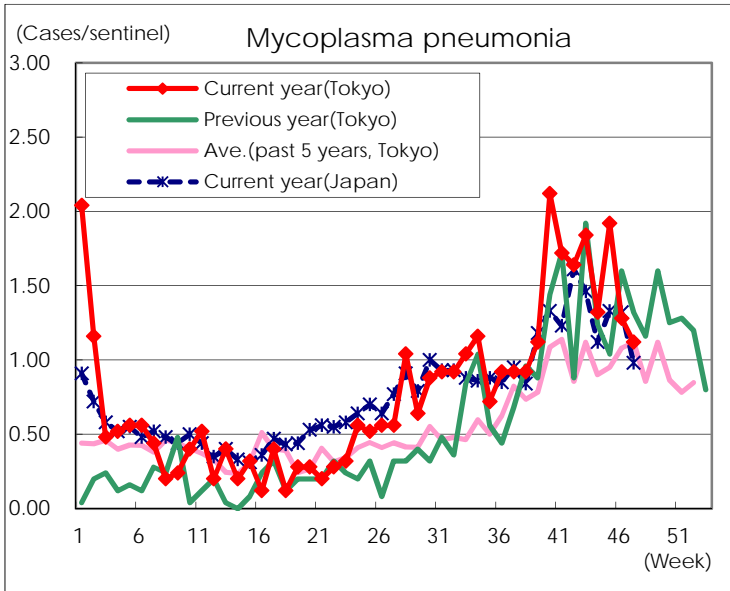
( Blank means 0. )

# Disease Trend Graph (weekly reported cases per sentinel in comparison)









Number of sentinel facilities for weekly reporting		
Types of sentinels	Number of sentinels	Sentinels having reported
Pediatric	264	262
Influenza	419	415
Ophthalmic	39	38
Specially-designated	25	25