

8 December 2016 / Number 48

Surveillance System in Tokyo, Japan

The infectious diseases which all physicians must report

All physicians must report to health centers the incidence of the diseases which are shown at page one. Health centers electronically report the individual cases to Tokyo Metropolitan Infectious Disease Surveillance Center.

The infectious diseases required to be reported by the sentinels

The numbers of patients who visit the sentinel clinics or hospitals during a week are reported to health centers in Tokyo. And they electronically report the numbers to Tokyo Metropolitan Infectious Disease Surveillance Center. We have about 500 sentinel clinics and hospitals in Tokyo.

Tokyo Metropolitan Institute of Public Health

TEL:81-3-3363-3213 FAX:81-3-5332-7365

e-mail:www@tokyo-eiken.go.jp

URL:idsc.tokyo-eiken.go.jp/

Number of patients with the diseases which all physicians must report

Category	Diseases	Tokyo				Cum 2016	Japan	
		45th	46th	47th	48th		48th	Cum 2016
I	Ebola hemorrhagic fever							
	Crimean-Congo hemorrhagic fever							
	Smallpox							
	South American hemorrhagic fever							
	Plague							
	Marburg disease							
	Lassa fever							
II	Acute poliomyelitis							
	Tuberculosis	70	59	55	52	3,378	317	22,014
	Diphtheria							
	Severe Acute Respiratory Syndrome(SARS)							
	Middle East Respiratory Syndrome (MERS)							
	Avian influenza H5N1							
	Avian influenza H7N9							
III	Cholera					2		9
	Shigellosis		1	1	1	38	1	115
	Enterohemorrhagic Escherichia coli infection	6	5	5	6	443	27	3,524
	Typhoid fever					17		50
	Paratyphoid fever					8		19
IV	Hepatitis E		2			34	6	333
	West Nile fever							
	Hepatitis A		1		1	64	2	259
	Echinococcosis							20
	Yellow fever							
	Psittacosis	1				2		5
	Omsk hemorrhagic fever							
	Relapsing fever							7
	Kyasanur forest disease							
	Q fever							
	Rabies							
	Coccidioidomycosis					2		3
	Monkeypox							
	Zika virus infection			1		3	1	12
	Severe Fever with Thrombocytopenia Syndrome						1	58
	Hemorrhagic fever with renal syndrome							
	Western equine encephalitis							
	Tick-borne encephalitis							1
	Anthrax							
	Chikungunya fever					4		13
	Scrub typhus(Tsutsugamushi disease)		3			5	50	346
	Dengue fever	1			1	87	4	325
	Eastern equine encephalitis							
	Avian influenza (excluding H5N1 and H7N9)							
	Nipah virus infection							
	Japanese spotted fever						2	271
	Japanese encephalitis							11
	Hantavirus pulmonary syndrome							
	Herpes B virus infection							
	Glanders							
	Brucellosis					1		2
Venezuelan equine encephalitis								
Hendra virus infection								
Epidemic typhus								
Botulism					1		5	
Malaria		1			18		49	
Tularemia								
Lyme disease							8	
Lyssavirus infection(excluding rabies)								
Rift valley fever								
Melioidosis								
Legionellosis	3	5	1	4	135	25	1,496	
Leptospirosis					7		74	
Rocky mountain spotted fever								

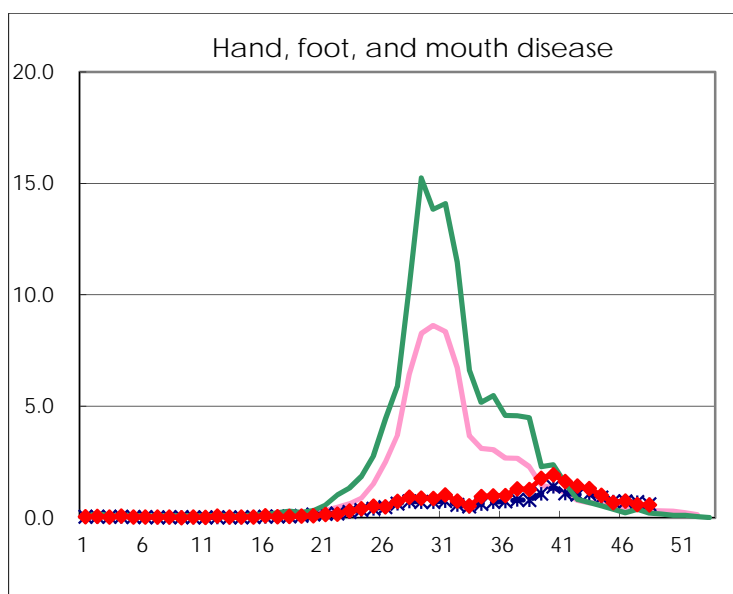
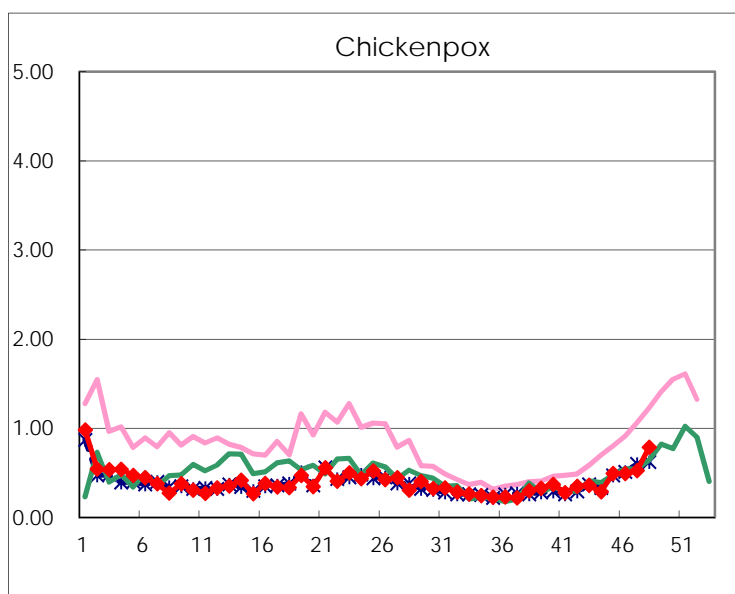
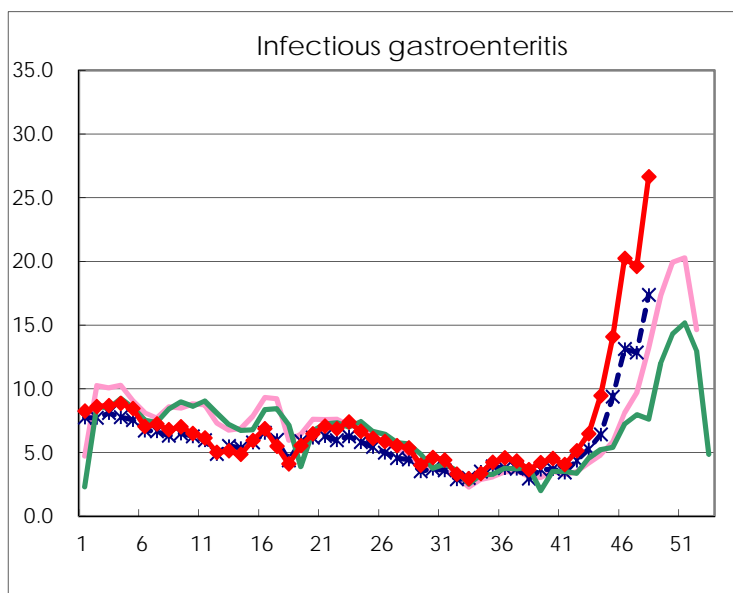
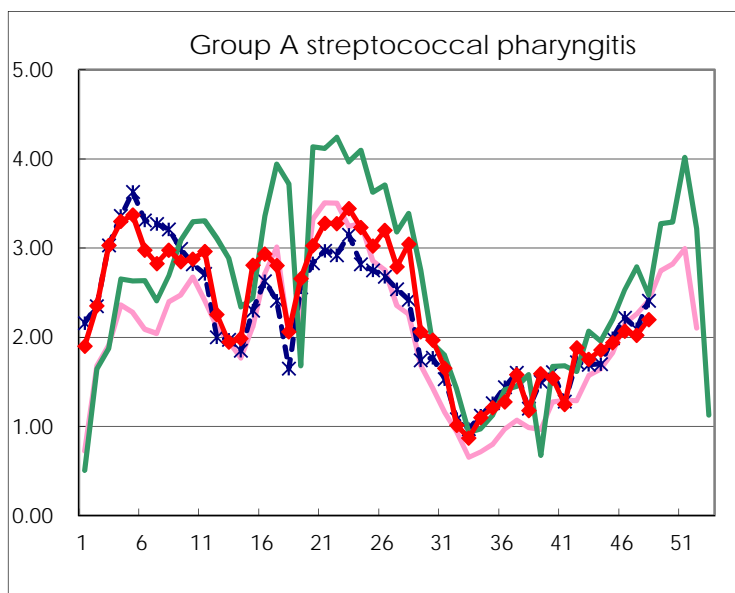
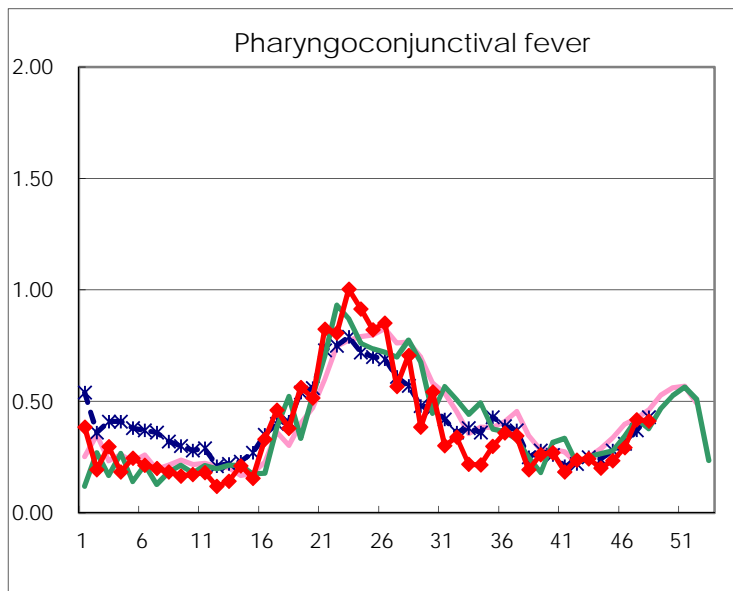
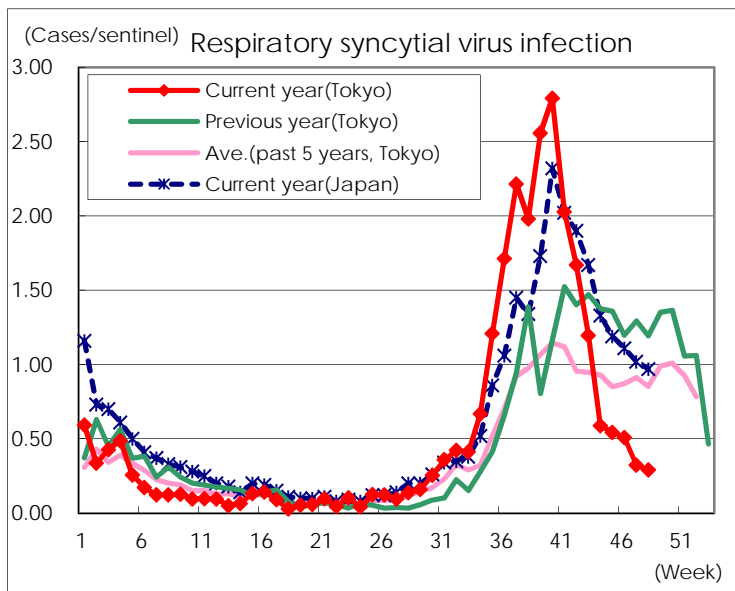
Category	Diseases	Tokyo					Japan	
		45th	46th	47th	48th	Cum 2016	48th	Cum 2016
V	Amebiasis	3	2	2	3	203	15	1,037
	Viral hepatitis(excluding hepatitis A and E)	1		1		65	2	258
	CRE infection	3	5	3	3	180	18	1,434
	Acute encephalitis(excluding JE and WNE)		1		2	83	8	697
	Cryptosporidiosis			1		2		14
	Creutzfeldt-Jakob disease				1	16		160
	Severe invasive streptococcal infections(TSLS)		1	2	1	63	4	457
	Acquired immunodeficiency syndrome (AIDS)	5	5	6	10	437	18	1,319
	Giardiasis					15	1	66
	Invasive <i>Haemophilus influenzae</i> disease			1		43	4	282
	Invasive meningococcal disease	1				5		42
	Invasive pneumococcal disease	12	6	6	11	316	44	2,397
	Varicella (limited to hospitalized case)	1	2	1	2	51	5	284
	Congenital rubella syndrome							
	Syphilis	29	42	29	30	1,566	69	4,168
	Disseminated cryptococcosis		2			17	2	120
	Tetanus					4	2	121
	Vancomycin-resistant <i>S. aureus</i> infection							
	Vancomycin-resistant Enterococcus infection					2	1	52
	Rubella	2	1			19	1	124
Measles					22	1	155	
MDRA infection					1		33	

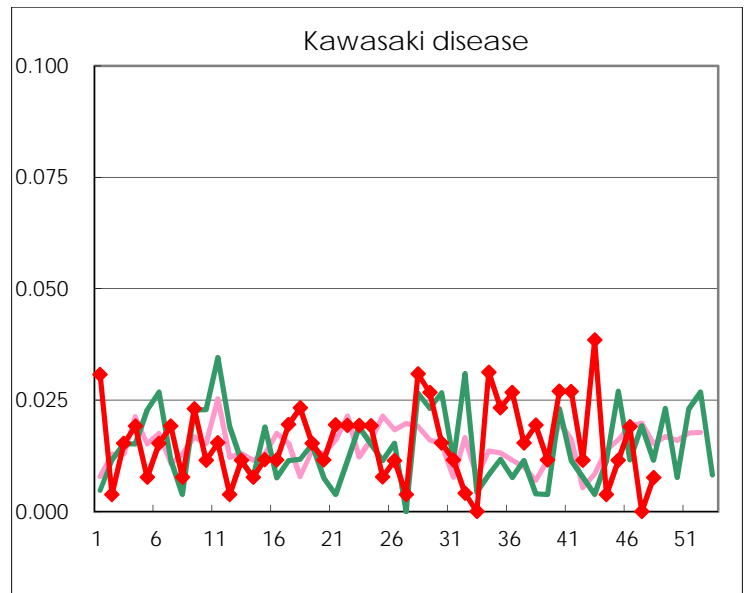
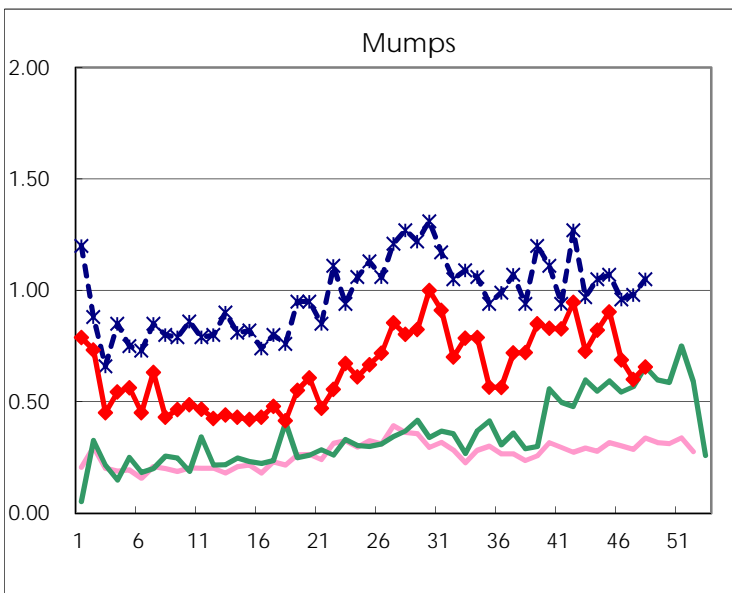
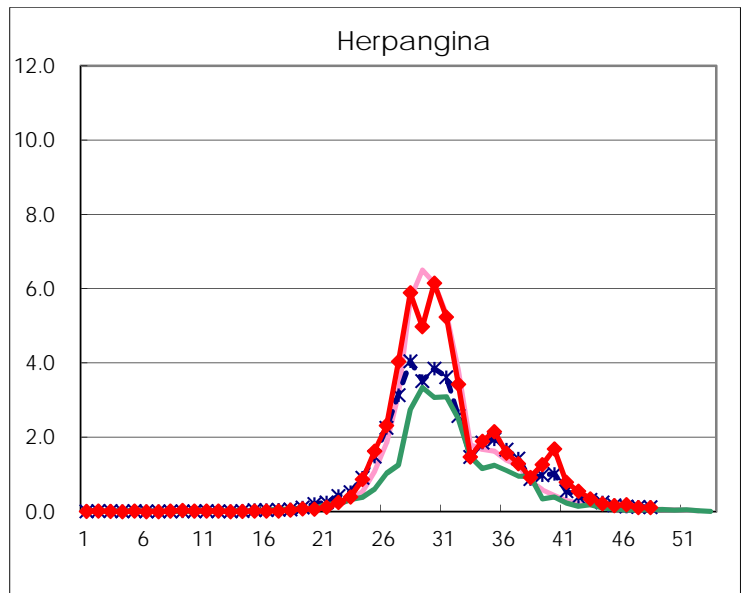
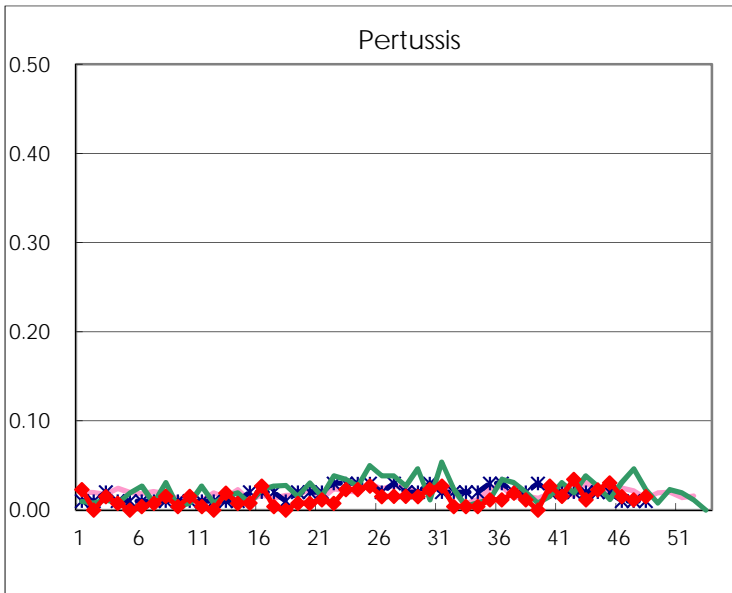
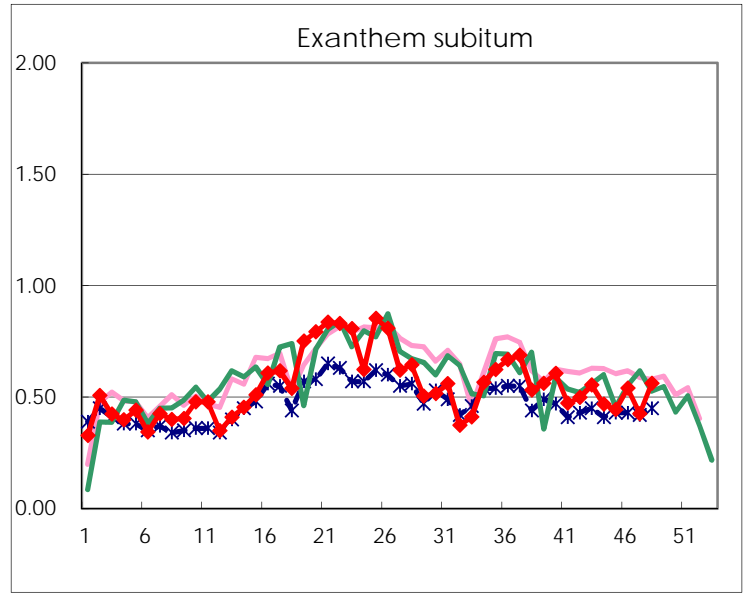
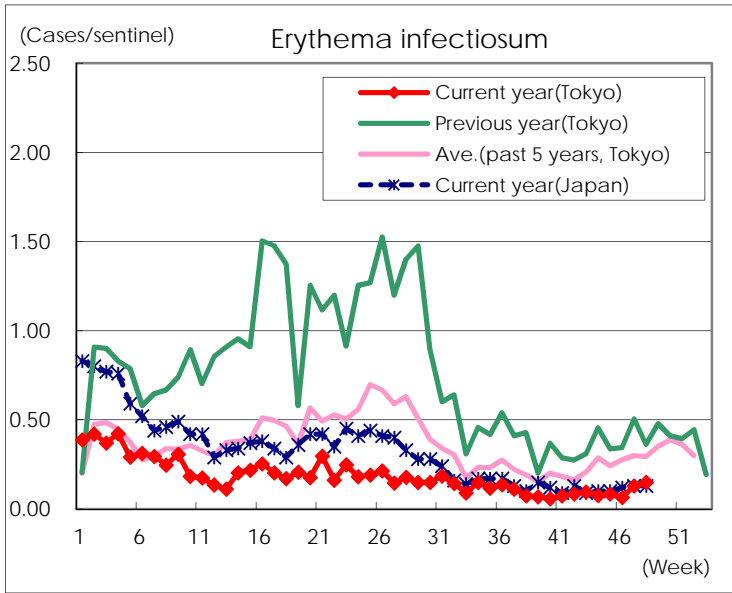
Number of patients with the diseases to be reported
by the designated clinics and hospitals

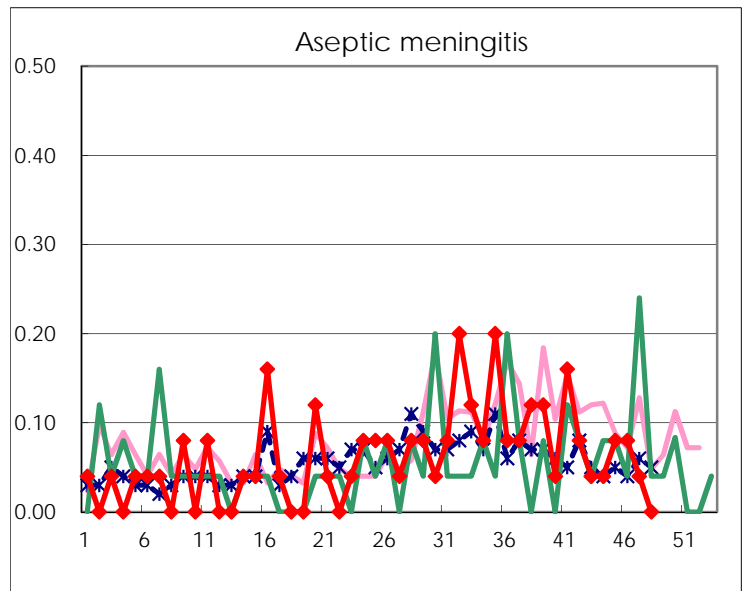
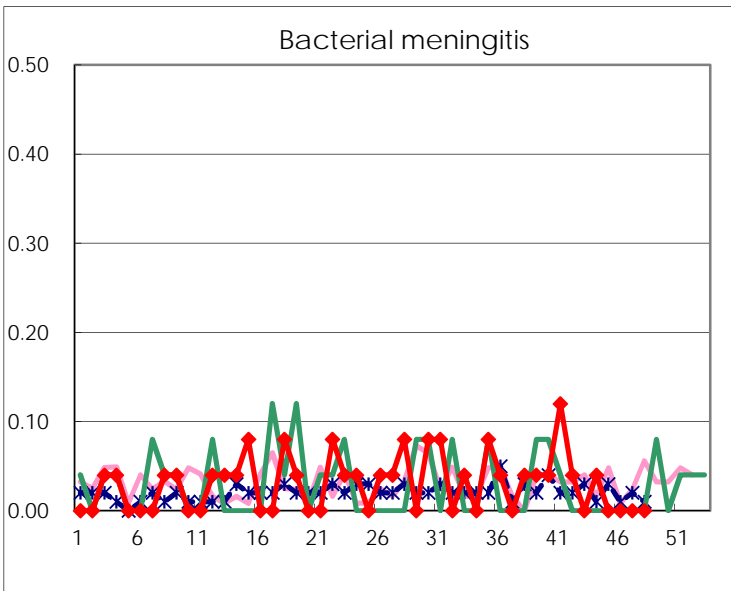
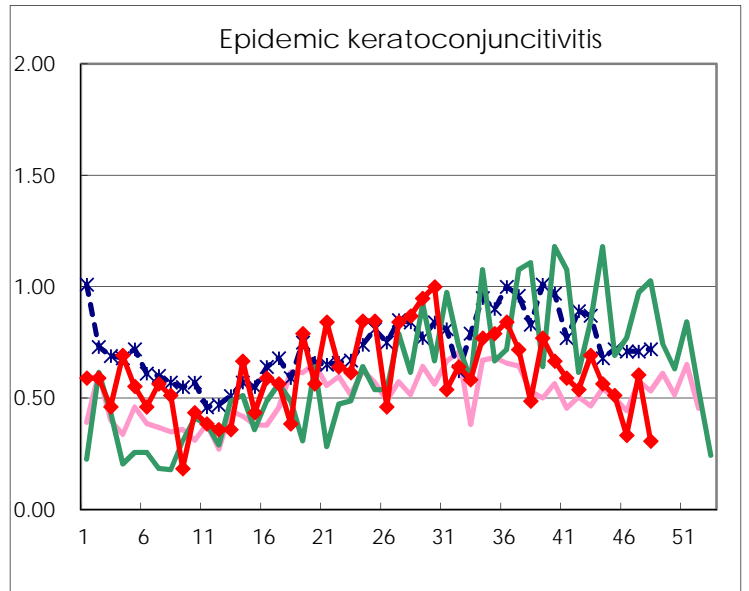
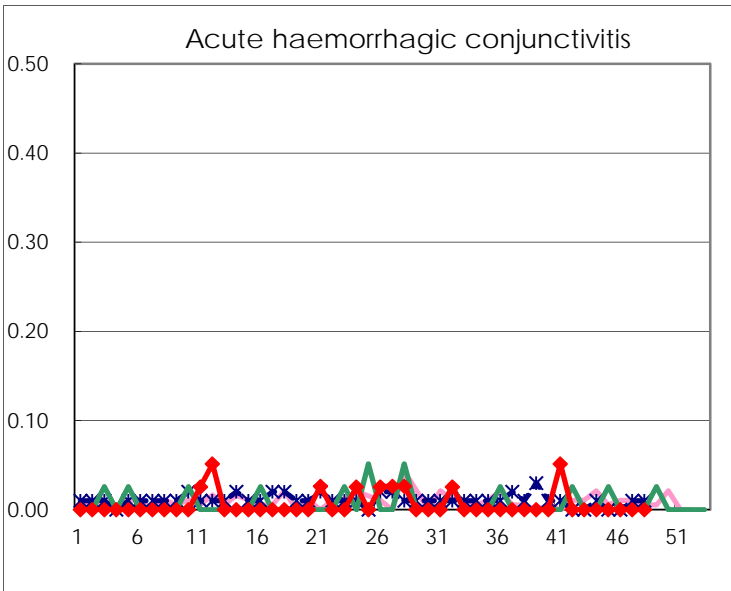
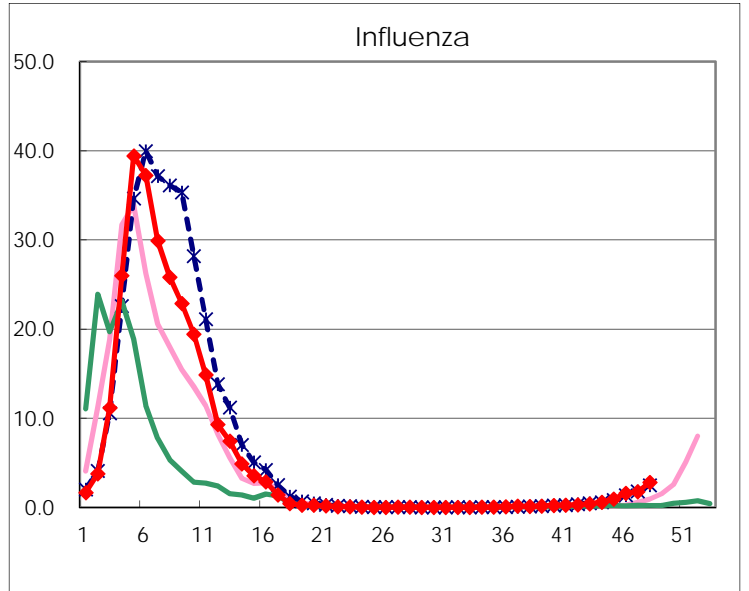
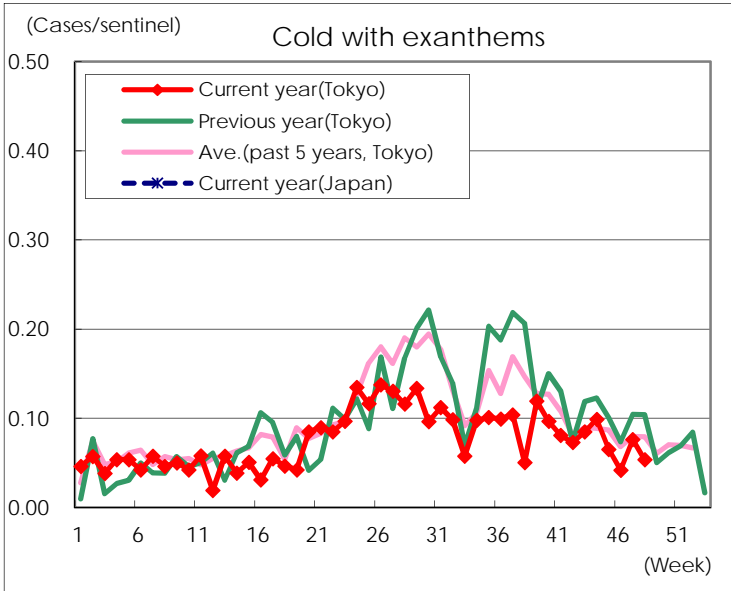
Diseases	Tokyo				
	45th	46th	47th	48th	/sentinel
Respiratory syncytial virus infection	142	134	85	76	0.29
Pharyngoconjunctival fever	61	77	110	108	0.41
Group A streptococcal pharyngitis	506	544	532	576	2.20
Infectious gastroenteritis	3,671	5,322	5,154	6,979	26.64
Chickenpox	128	129	138	206	0.79
Hand, foot, and mouth disease	176	197	154	149	0.57
Erythema infectiosum	22	17	34	39	0.15
Exanthem subitum	116	142	112	147	0.56
Pertussis	8	4	3	4	0.02
Herpangina	44	50	29	29	0.11
Mumps	236	181	158	172	0.66
Kawasaki disease	3	5		2	0.01
Cold with exanthems	17	11	20	14	0.05
Influenza	390	652	728	1,160	2.79
Acute hemorrhagic conjunctivitis					
Epidemic keratoconjunctivitis	20	13	23	12	0.31
Bacterial meningitis					
Aseptic meningitis	2	2	1		
Mycoplasma pneumonia	48	32	28	33	1.32
Chlamydial pneumonia (excluding psittacosis)	2	1	3		
Infectious gastroenteritis (only by Rotavirus)	1	2			
Influenza-Associated Hospitalizations	1	5	2	6	0.24

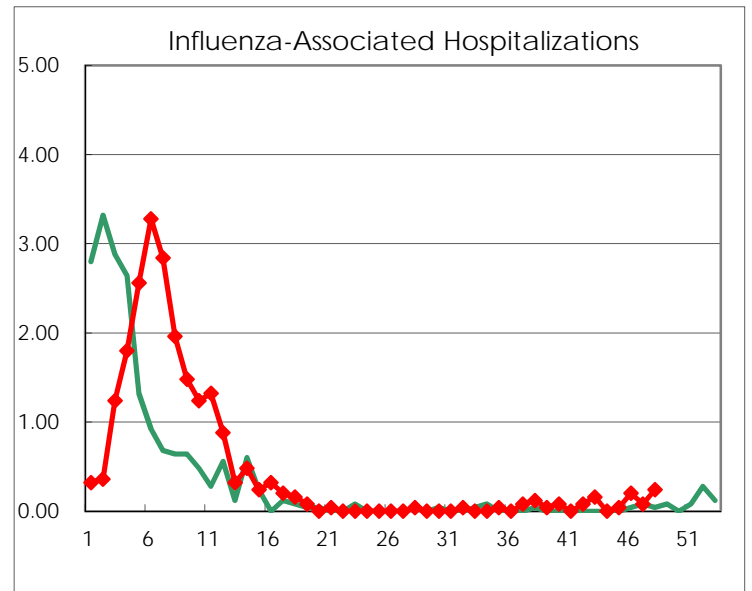
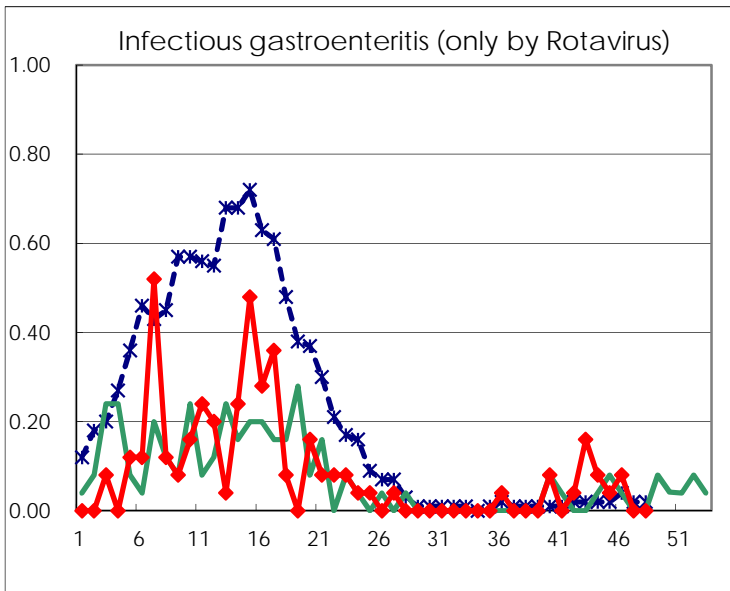
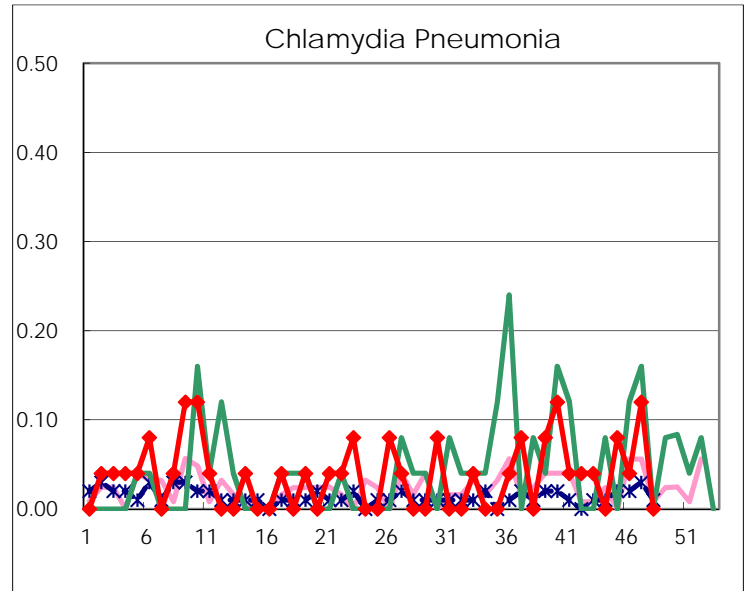
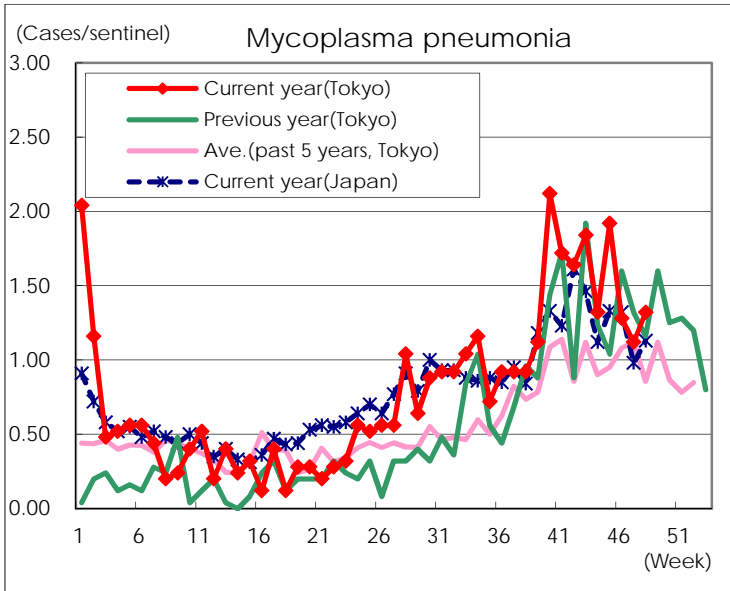
(Blank means 0.)

Disease Trend Graph (weekly reported cases per sentinel in comparison)









Number of sentinel facilities for weekly reporting		
Types of sentinels	Number of sentinels	Sentinels having reported
Pediatric	264	262
Influenza	419	416
Ophthalmic	39	39
Specially-designated	25	25