

15 December 2016 / Number 49

Surveillance System in Tokyo, Japan

The infectious diseases which all physicians must report

All physicians must report to health centers the incidence of the diseases which are shown at page one. Health centers electronically report the individual cases to Tokyo Metropolitan Infectious Disease Surveillance Center.

The infectious diseases required to be reported by the sentinels

The numbers of patients who visit the sentinel clinics or hospitals during a week are reported to health centers in Tokyo. And they electronically report the numbers to Tokyo Metropolitan Infectious Disease Surveillance Center. We have about 500 sentinel clinics and hospitals in Tokyo.

Tokyo Metropolitan Institute of Public Health

TEL:81-3-3363-3213 FAX:81-3-5332-7365

e-mail:www@tokyo-eiken.go.jp

URL:idsc.tokyo-eiken.go.jp/

Number of patients with the diseases which all physicians must report

Category	Diseases	Tokyo					Japan	
		46th	47th	48th	49th	Cum 2016	49th	Cum 2016
I	Ebola hemorrhagic fever							
	Crimean-Congo hemorrhagic fever							
	Smallpox							
	South American hemorrhagic fever							
	Plague							
	Marburg disease							
	Lassa fever							
II	Acute poliomyelitis							
	Tuberculosis	59	55	52	72	3,453	343	22,551
	Diphtheria							
	Severe Acute Respiratory Syndrome(SARS)							
	Middle East Respiratory Syndrome (MERS)							
	Avian influenza H5N1							
	Avian influenza H7N9							
III	Cholera					2		9
	Shigellosis	1	1	1	2	40	2	118
	Enterohemorrhagic Escherichia coli infection	5	5	6		443	16	3,540
	Typhoid fever					17		50
	Paratyphoid fever					8		19
IV	Hepatitis E	2				34	4	337
	West Nile fever							
	Hepatitis A	1			1	64	1	260
	Echinococcosis							20
	Yellow fever							
	Psittacosis					2		5
	Omsk hemorrhagic fever							
	Relapsing fever							7
	Kyasanur forest disease							
	Q fever							
	Rabies							
	Coccidioidomycosis					2		3
	Monkeypox							
	Zika virus infection		1			3		12
	Severe Fever with Thrombocytopenia Syndrome							58
	Hemorrhagic fever with renal syndrome							
	Western equine encephalitis							
	Tick-borne encephalitis							1
	Anthrax							
	Chikungunya fever					4		13
	Scrub typhus(Tsutsugamushi disease)	3			1	6	38	391
	Dengue fever			1		87	2	327
	Eastern equine encephalitis							
	Avian influenza (excluding H5N1 and H7N9)							
	Nipah virus infection							
	Japanese spotted fever							271
	Japanese encephalitis							11
	Hantavirus pulmonary syndrome							
	Herpes B virus infection							
	Glanders							
	Brucellosis					1		2
	Venezuelan equine encephalitis							
Hendra virus infection								
Epidemic typhus								
Botulism					1		5	
Malaria	1				18	2	51	
Tularemia								
Lyme disease							8	
Lyssavirus infection(excluding rabies)								
Rift valley fever								
Melioidosis								
Legionellosis	5	1	4	1	136	18	1,516	
Leptospirosis					7		74	
	Rocky mountain spotted fever							

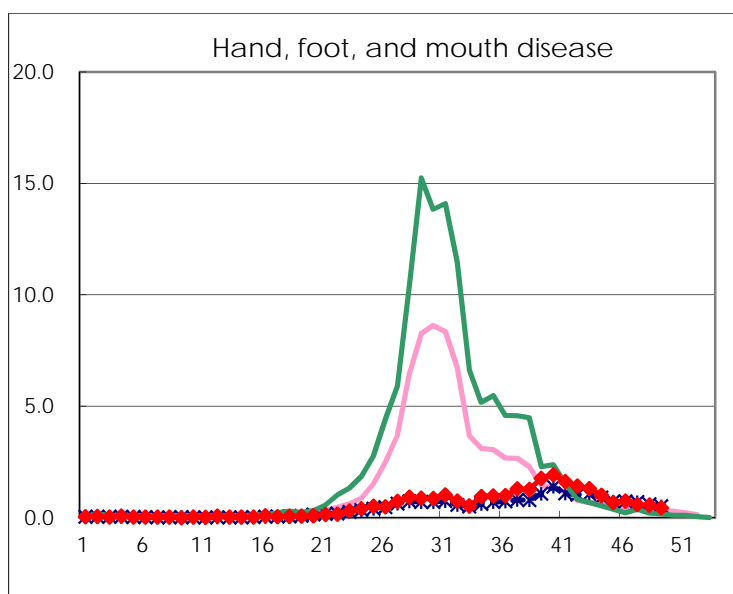
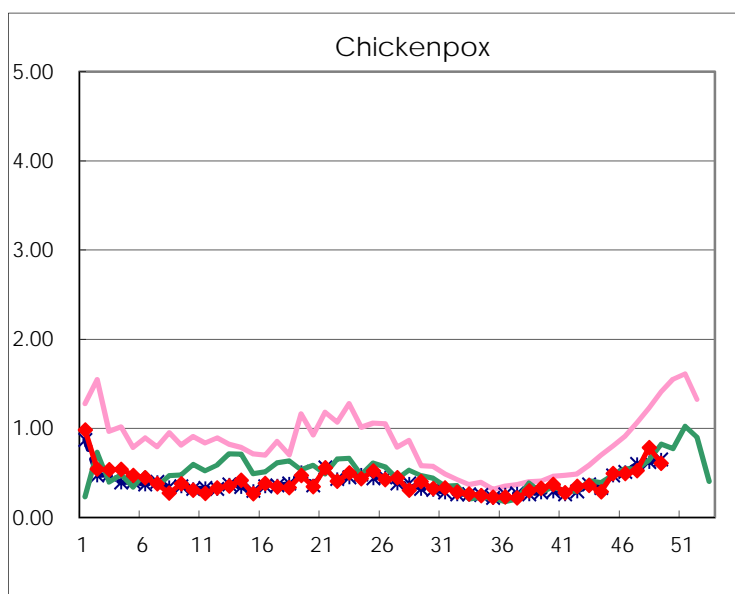
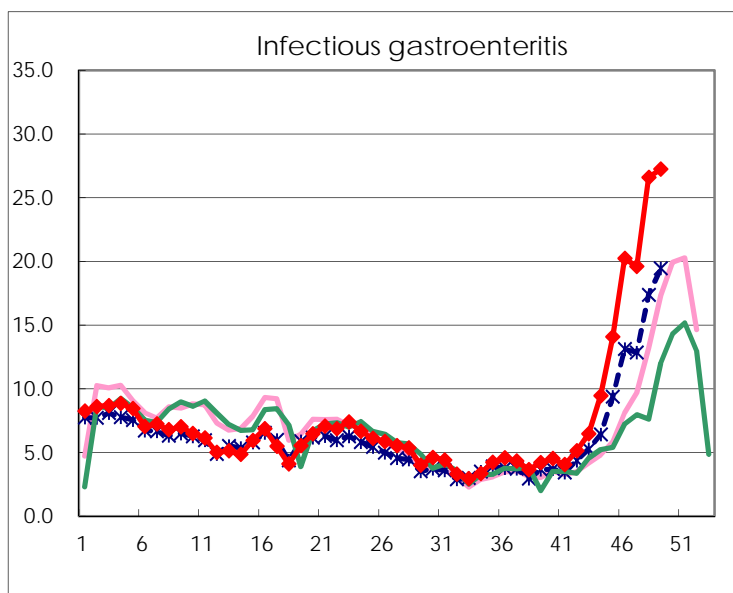
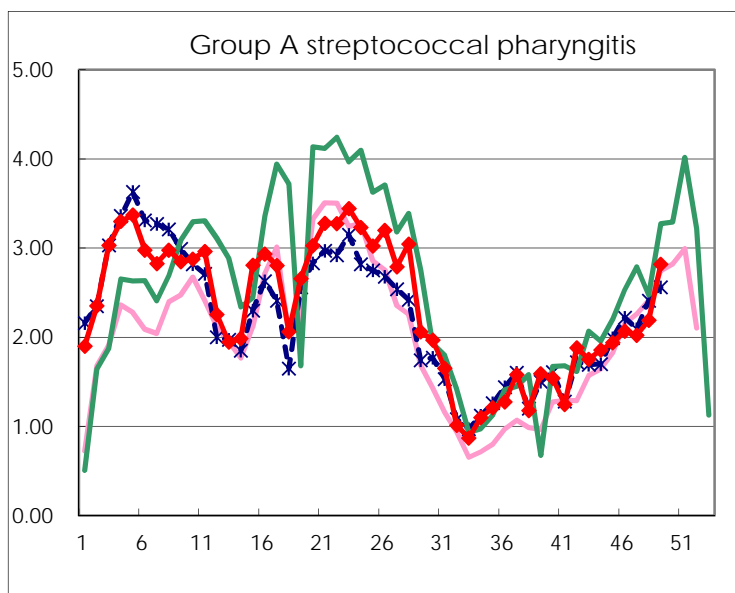
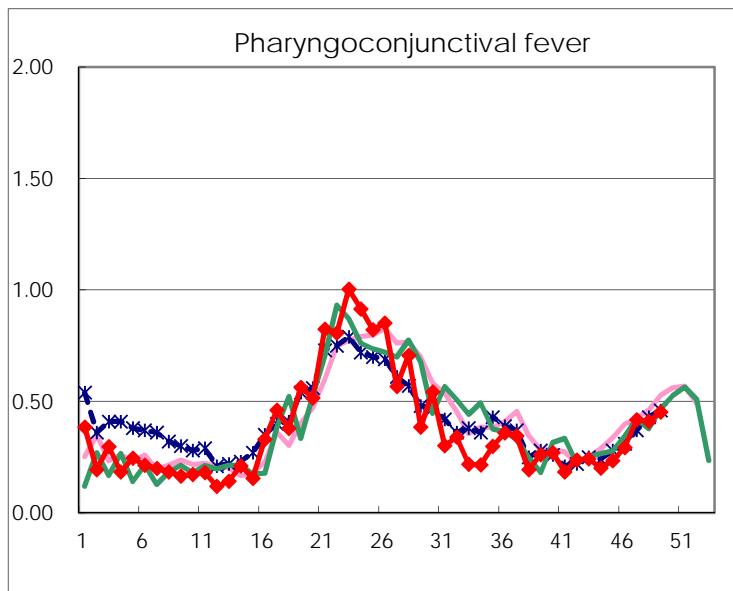
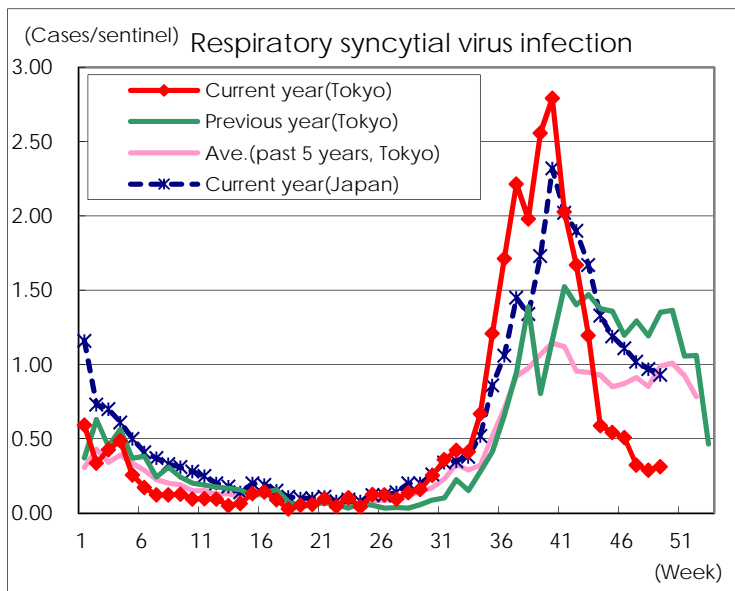
Category	Diseases	Tokyo					Japan	
		46th	47th	48th	49th	Cum 2016	49th	Cum 2016
V	Amebiasis	2	2	3	7	210	23	1,067
	Viral hepatitis(excluding hepatitis A and E)		1		1	66	1	258
	CRE infection	5	3	4	2	183	26	1,472
	Acute encephalitis(excluding JE and WNE)	1		2	1	84	10	711
	Cryptosporidiosis		1			2		14
	Creutzfeldt-Jakob disease			1		16	1	161
	Severe invasive streptococcal infections(TSLS)	1	2	1		63	6	469
	Acquired immunodeficiency syndrome (AIDS)	5	6	10	4	441	21	1,349
	Giardiasis					15	2	68
	Invasive <i>Haemophilus influenzae</i> disease		1			43	3	287
	Invasive meningococcal disease					5	1	43
	Invasive pneumococcal disease	6	6	11	11	327	51	2,481
	Varicella (limited to hospitalized case)	2	1	2	3	54	4	292
	Congenital rubella syndrome							
	Syphilis	42	29	31	32	1,599	64	4,259
	Disseminated cryptococcosis	2			1	18	4	125
	Tetanus					4	1	122
	Vancomycin-resistant <i>S. aureus</i> infection							
	Vancomycin-resistant Enterococcus infection					2	2	55
	Rubella	1				19	1	125
Measles					22		152	
MDRA infection					1		33	

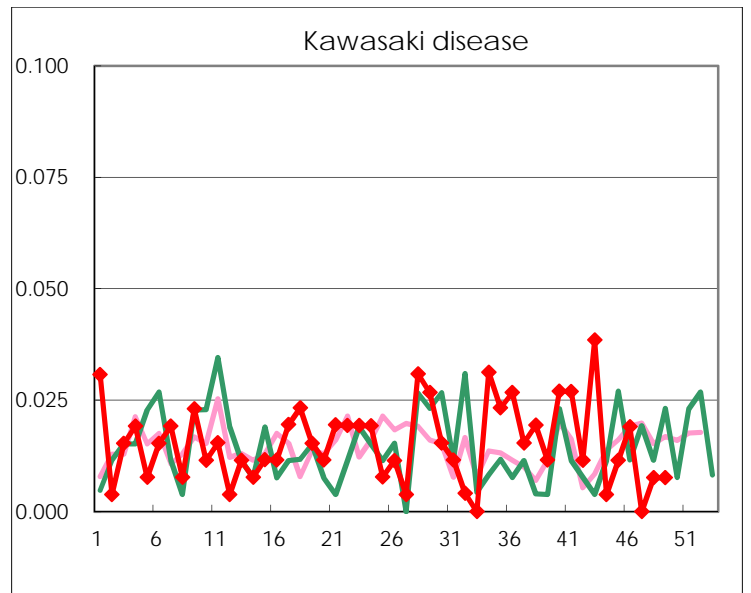
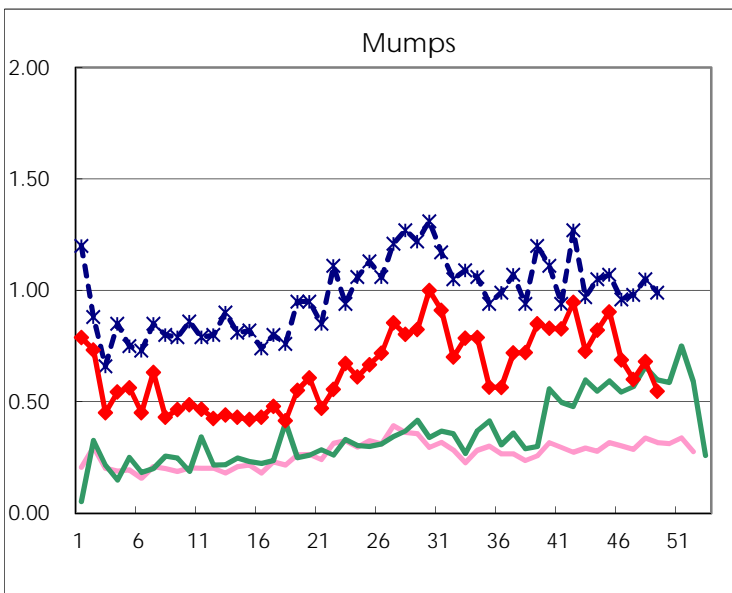
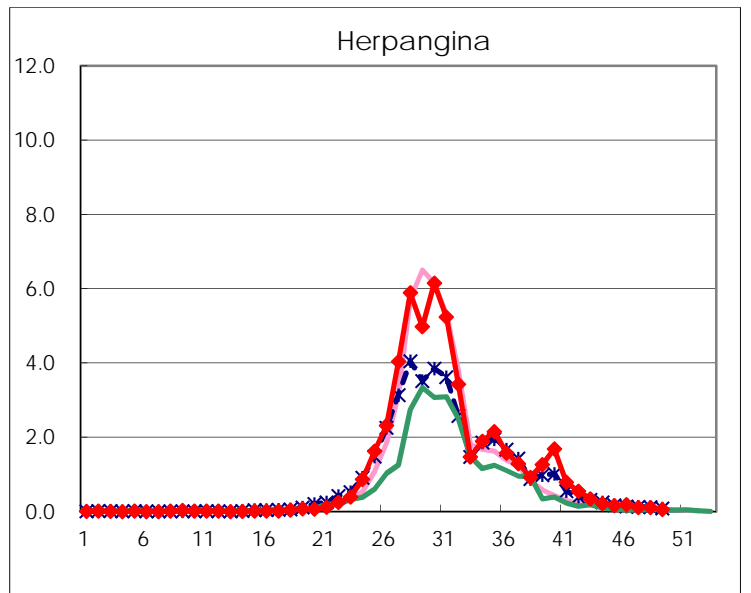
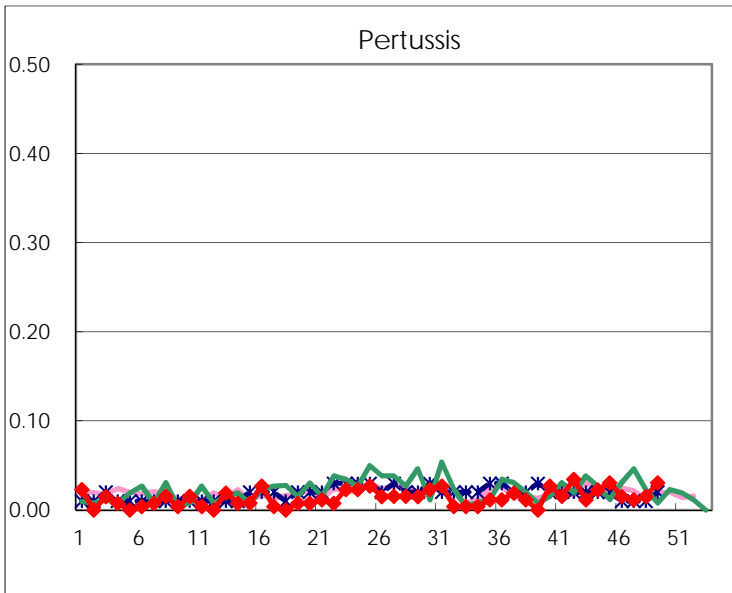
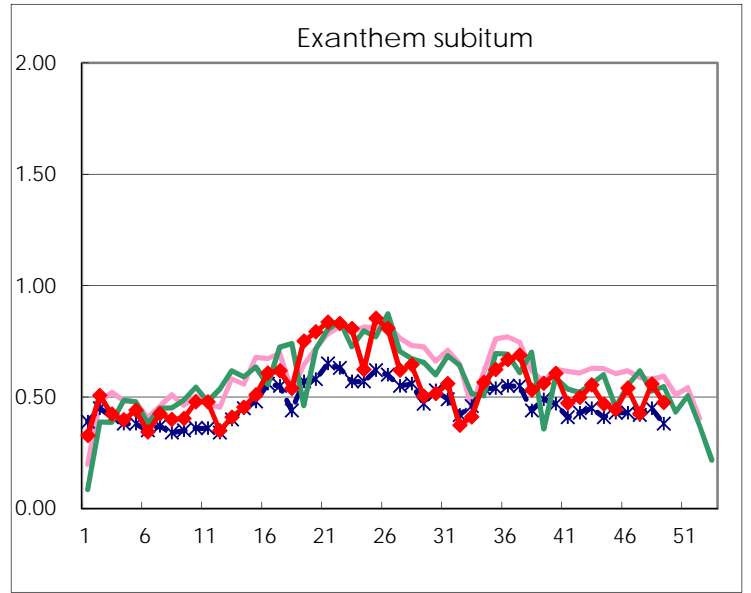
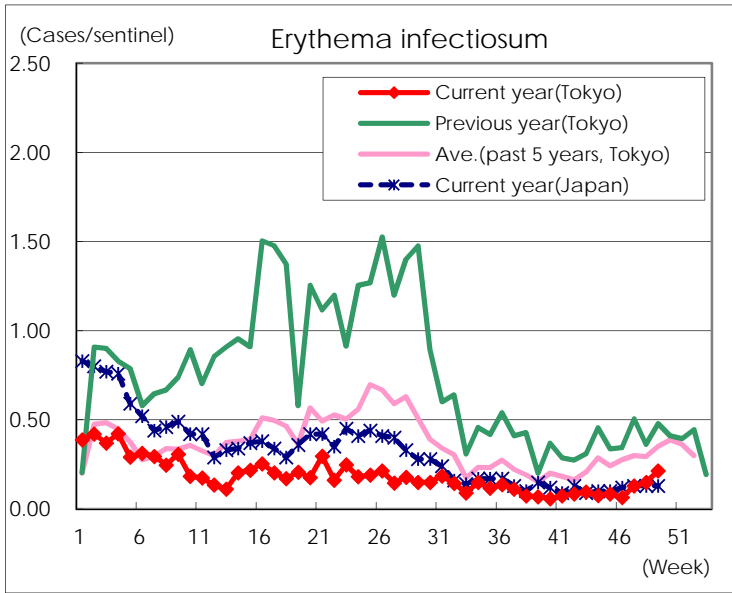
Number of patients with the diseases to be reported
by the designated clinics and hospitals

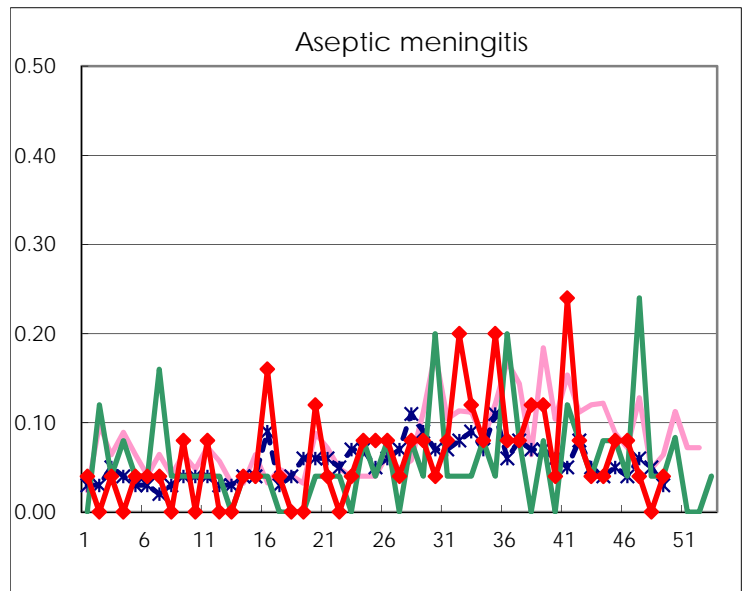
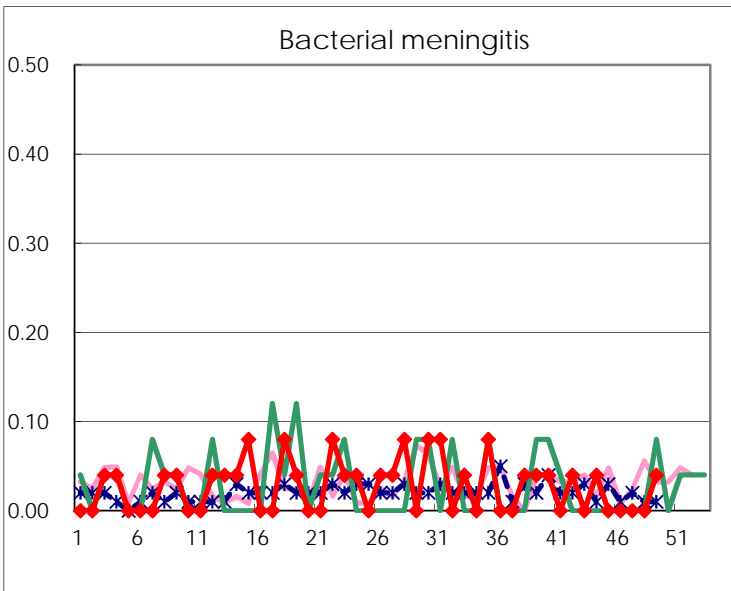
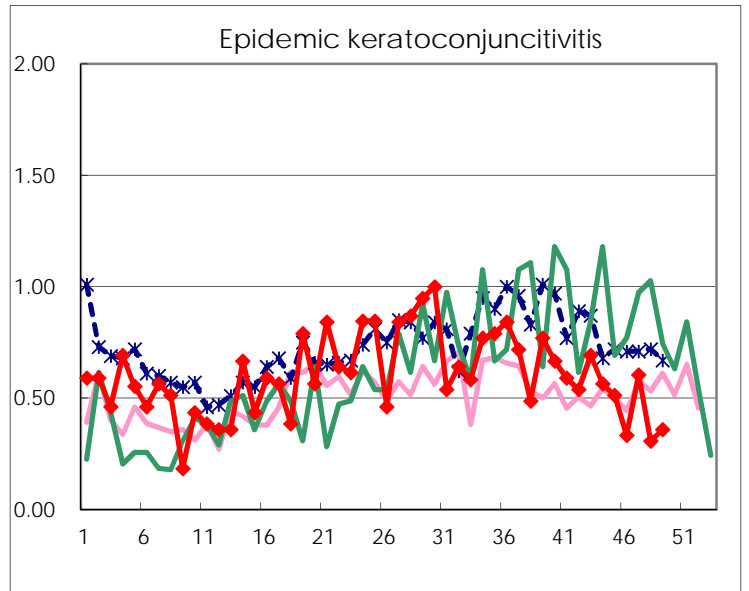
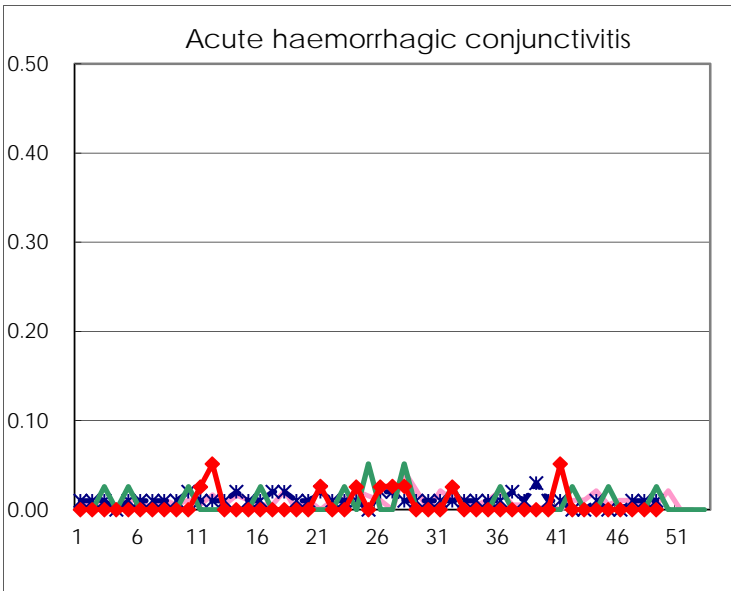
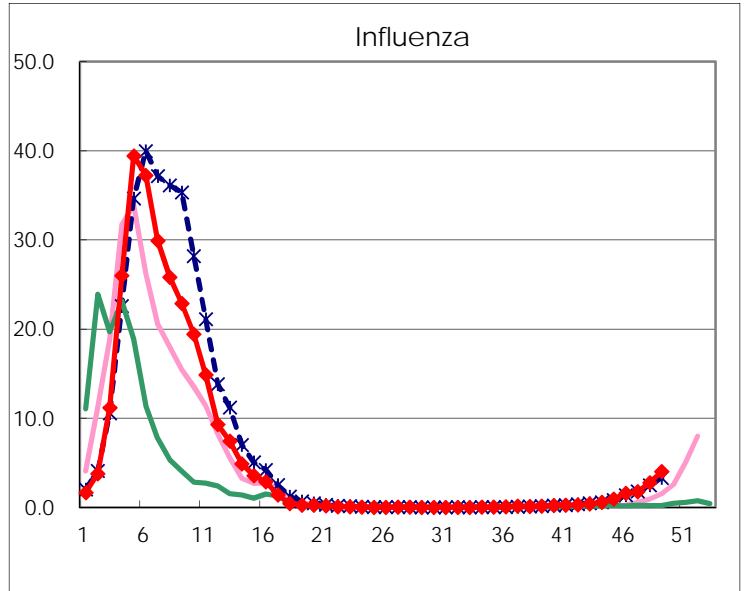
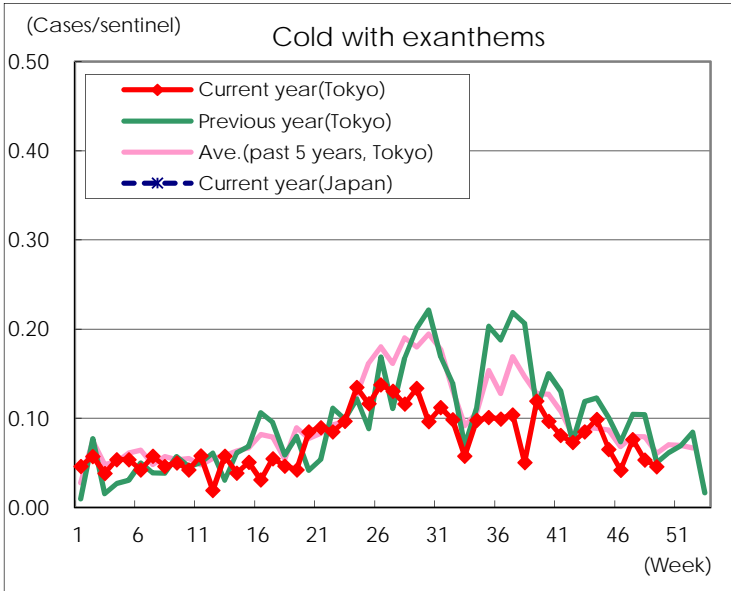
Diseases	Tokyo				
	46th	47th	48th	49th	/sentinel
Respiratory syncytial virus infection	134	85	76	82	0.31
Pharyngoconjunctival fever	77	110	108	119	0.45
Group A streptococcal pharyngitis	544	532	576	741	2.82
Infectious gastroenteritis	5,322	5,154	6,997	7,164	27.24
Chickenpox	129	138	206	160	0.61
Hand, foot, and mouth disease	197	154	149	117	0.44
Erythema infectiosum	17	34	39	56	0.21
Exanthem subitum	142	112	147	125	0.48
Pertussis	4	3	4	8	0.03
Herpangina	50	29	29	15	0.06
Mumps	181	158	179	144	0.55
Kawasaki disease	5		2	2	0.01
Cold with exanthems	11	20	14	12	0.05
Influenza	652	728	1,160	1,675	4.02
Acute hemorrhagic conjunctivitis					
Epidemic keratoconjunctivitis	13	23	12	14	0.36
Bacterial meningitis				1	0.04
Aseptic meningitis	2	1		1	0.04
Mycoplasma pneumonia	32	28	33	34	1.36
Chlamydial pneumonia (excluding psittacosis)	1	3		1	0.04
Infectious gastroenteritis (only by Rotavirus)	2			1	0.04
Influenza-Associated Hospitalizations	5	2	6	4	0.16

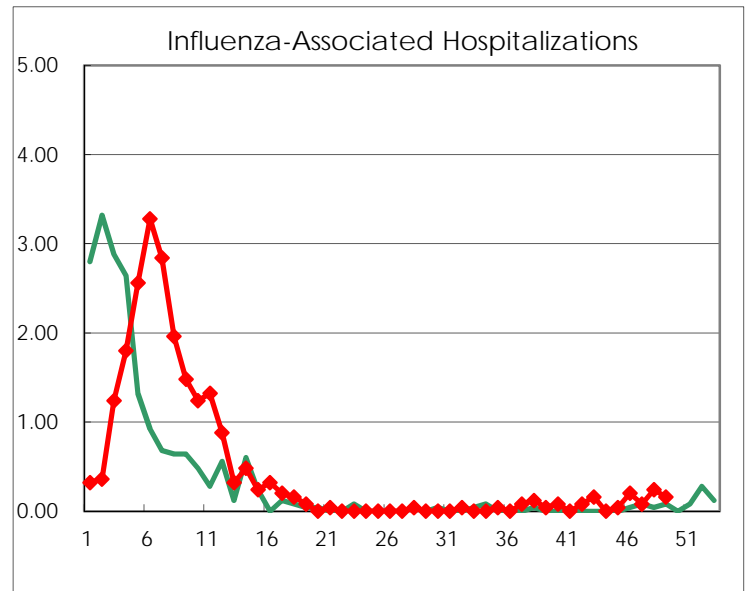
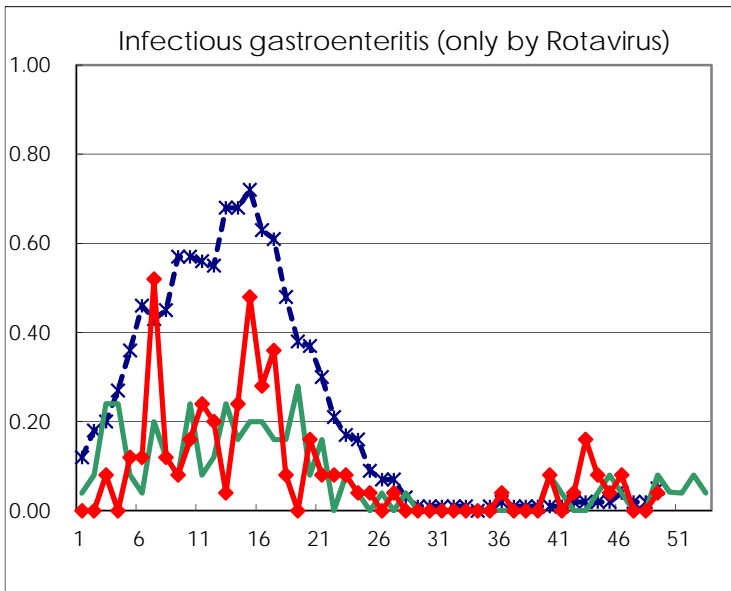
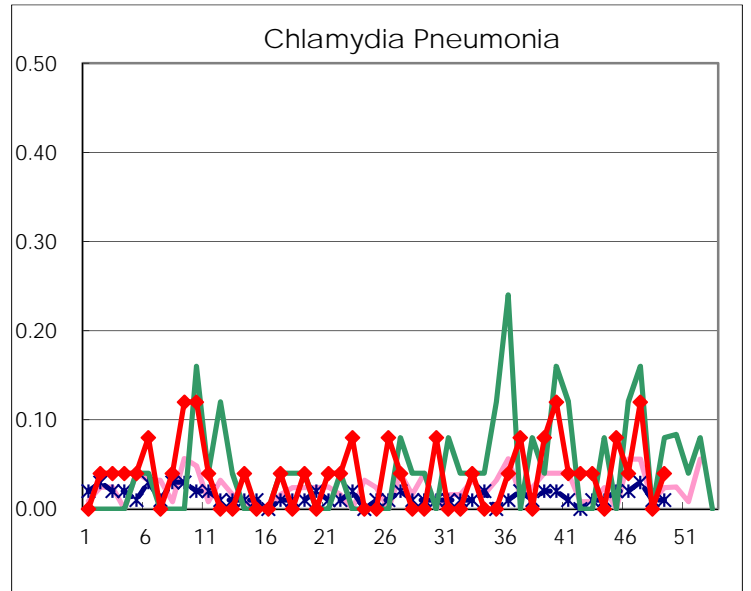
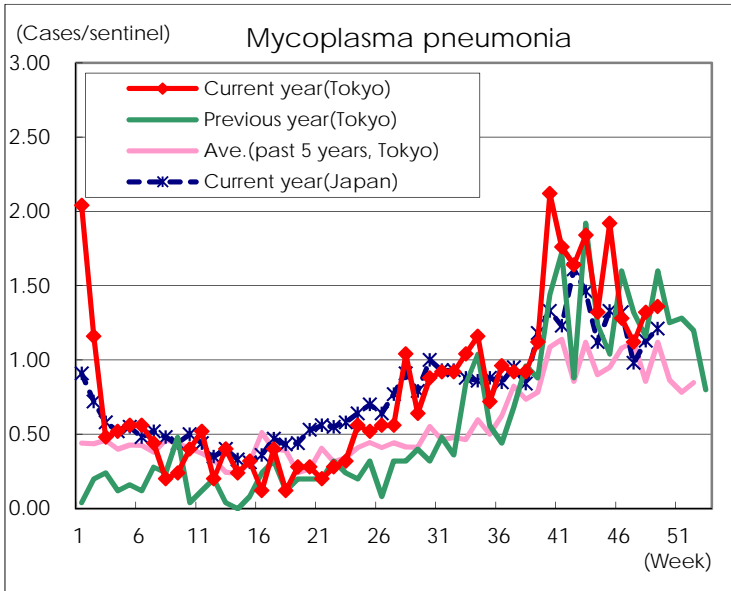
(Blank means 0.)

Disease Trend Graph (weekly reported cases per sentinel in comparison)









Number of sentinel facilities for weekly reporting		
Types of sentinels	Number of sentinels	Sentinels having reported
Pediatric	264	263
Influenza	419	417
Ophthalmic	39	39
Specially-designated	25	25