

22 December 2016 / Number 50

Surveillance System in Tokyo, Japan

The infectious diseases which all physicians must report

All physicians must report to health centers the incidence of the diseases which are shown at page one. Health centers electronically report the individual cases to Tokyo Metropolitan Infectious Disease Surveillance Center.

The infectious diseases required to be reported by the sentinels

The numbers of patients who visit the sentinel clinics or hospitals during a week are reported to health centers in Tokyo. And they electronically report the numbers to Tokyo Metropolitan Infectious Disease Surveillance Center. We have about 500 sentinel clinics and hospitals in Tokyo.

Tokyo Metropolitan Institute of Public Health

TEL:81-3-3363-3213 FAX:81-3-5332-7365

e-mail:www@tokyo-eiken.go.jp

URL:idsc.tokyo-eiken.go.jp/

Number of patients with the diseases which all physicians must report

Category	Diseases	Tokyo				Japan		
		47th	48th	49th	50th	Cum 2016	50th	Cum 2016
I	Ebola hemorrhagic fever							
	Crimean-Congo hemorrhagic fever							
	Smallpox							
	South American hemorrhagic fever							
	Plague							
	Marburg disease							
II	Lassa fever							
	Acute poliomyelitis							
	Tuberculosis	68	66	73	65	3,553	357	23,019
	Diphtheria							
	Severe Acute Respiratory Syndrome(SARS)							
	Middle East Respiratory Syndrome (MERS)							
III	Avian influenza H5N1							
	Avian influenza H7N9							
	Cholera					2		10
	Shigellosis	1	1	2		40	2	120
	Enterohemorrhagic Escherichia coli infection	5	6		3	446	22	3,566
IV	Typhoid fever					17		50
	Paratyphoid fever					8		19
	Hepatitis E				1	35	3	341
	West Nile fever							
	Hepatitis A			1		64	1	262
	Echinococcosis							20
	Yellow fever							
	Psittacosis					2		6
	Omsk hemorrhagic fever							
	Relapsing fever							7
	Kyasanur forest disease							
	Q fever							
	Rabies							
	Coccidioidomycosis					2		3
	Monkeypox							
	Zika virus infection	1				3		12
	Severe Fever with Thrombocytopenia Syndrome							58
	Hemorrhagic fever with renal syndrome							
	Western equine encephalitis							
	Tick-borne encephalitis							1
	Anthrax							
	Chikungunya fever					4		13
	Scrub typhus(Tsutsugamushi disease)			1		6	48	453
	Dengue fever		1		1	88	2	330
	Eastern equine encephalitis							
	Avian influenza (excluding H5N1 and H7N9)							
	Nipah virus infection							
	Japanese spotted fever							272
	Japanese encephalitis							11
	Hantavirus pulmonary syndrome							
	Herpes B virus infection							
	Glanders							
Brucellosis					1		2	
Venezuelan equine encephalitis								
Hendra virus infection								
Epidemic typhus								
Botulism					1		5	
Malaria					18	2	53	
Tularemia								
Lyme disease							8	
Lyssavirus infection(excluding rabies)								
Rift valley fever								
Melioidosis								
Legionellosis	1	4	1	2	138	20	1,538	
Leptospirosis					7		74	
Rocky mountain spotted fever								

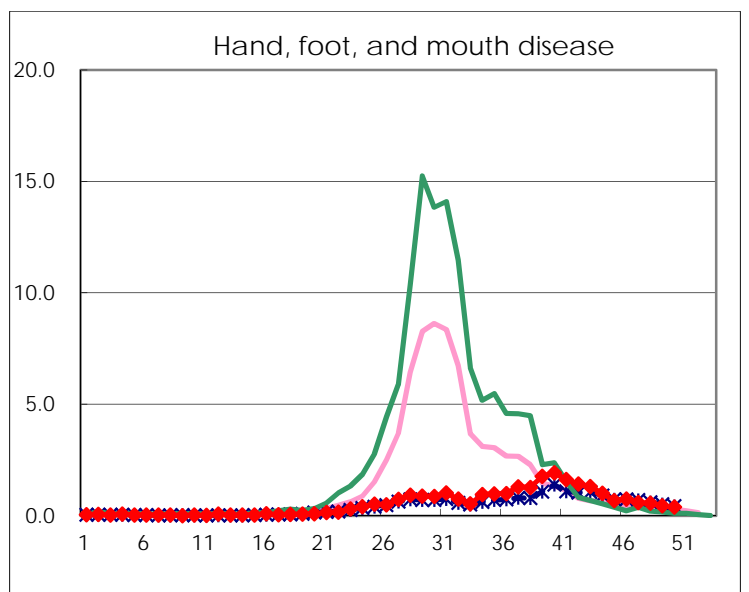
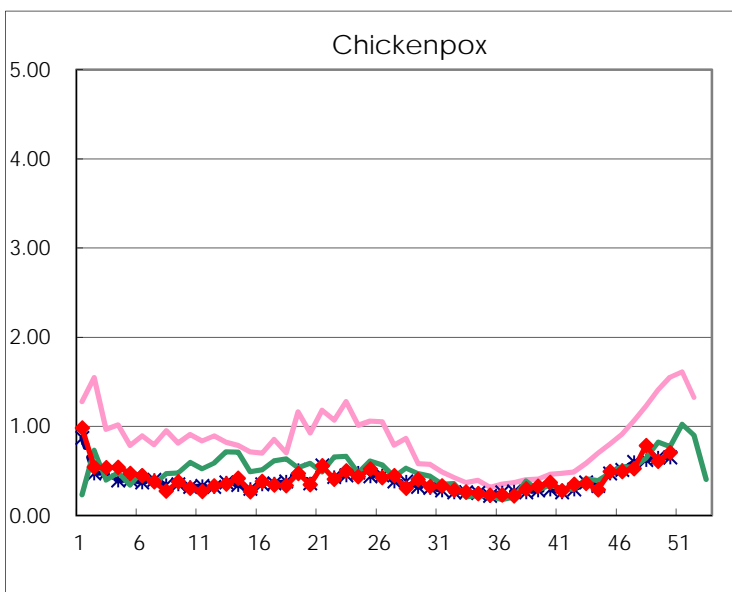
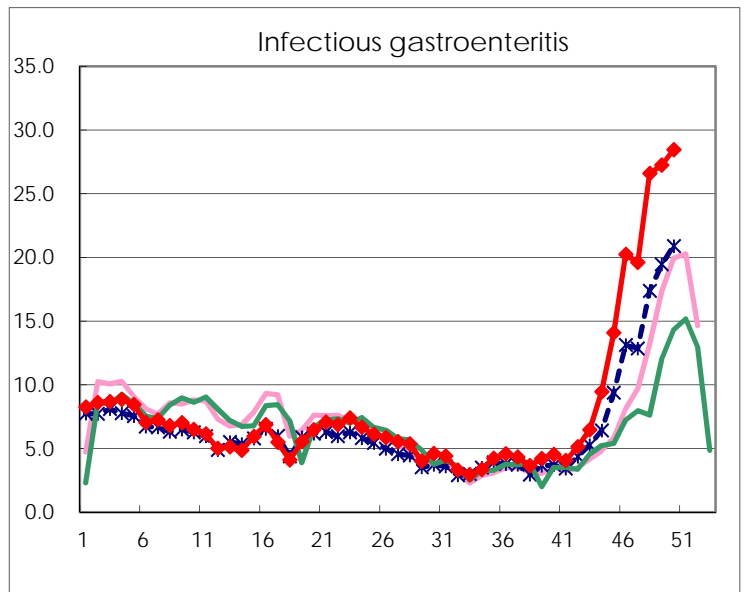
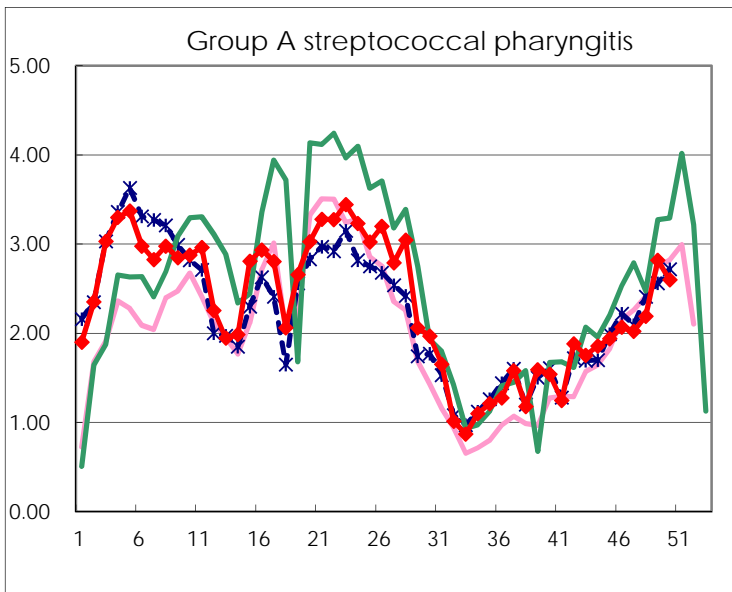
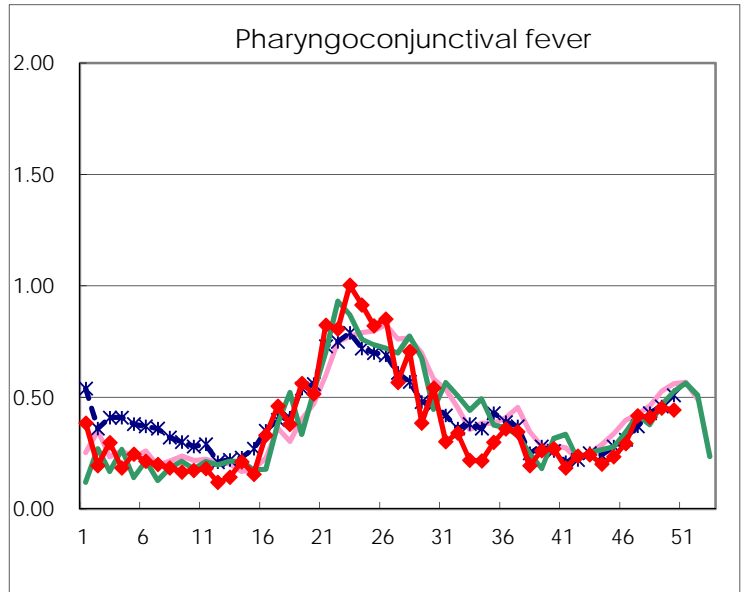
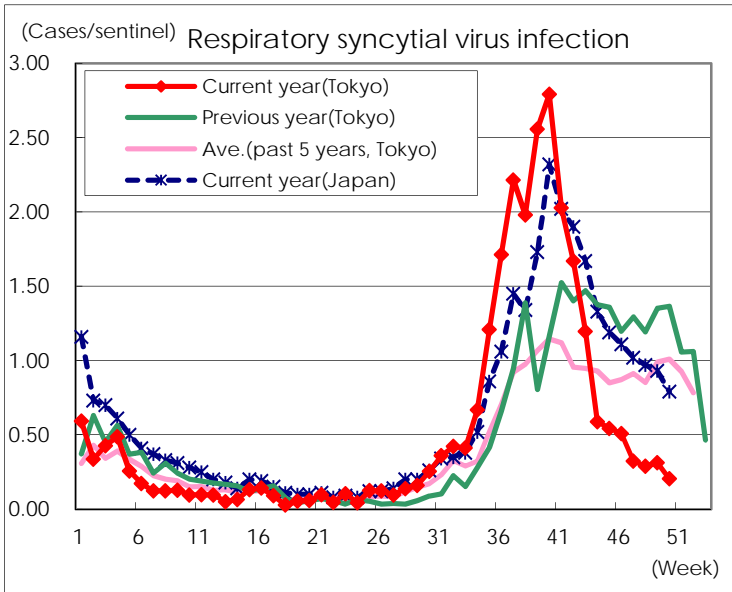
Category	Diseases	Tokyo					Japan	
		47th	48th	49th	50th	Cum 2016	50th	Cum 2016
V	Amebiasis	2	3	7	6	216	13	1,089
	Viral hepatitis(excluding hepatitis A and E)	1		1	1	67	2	261
	CRE infection	3	4	2	1	184	13	1,498
	Acute encephalitis(excluding JE and WNE)		2	1	1	85	7	725
	Cryptosporidiosis	1				2		14
	Creutzfeldt-Jakob disease		1			16	2	163
	Severe invasive streptococcal infections(TSLS)	2	1			63	1	473
	Acquired immunodeficiency syndrome (AIDS)	6	10	4	10	451	15	1,379
	Giardiasis					15		68
	Invasive <i>Haemophilus influenzae</i> disease	1			2	45	4	293
	Invasive meningococcal disease					5		43
	Invasive pneumococcal disease	6	11	11	8	335	49	2,549
	Varicella (limited to hospitalized case)	1	2	3		54	2	296
	Congenital rubella syndrome							
	Syphilis	29	31	32	31	1,630	48	4,336
	Disseminated cryptococcosis			1		18	3	130
	Tetanus					4	1	124
	Vancomycin-resistant <i>S. aureus</i> infection							
	Vancomycin-resistant Enterococcus infection					2		56
	Rubella					19		125
Measles					22	3	156	
MDRA infection					1		33	

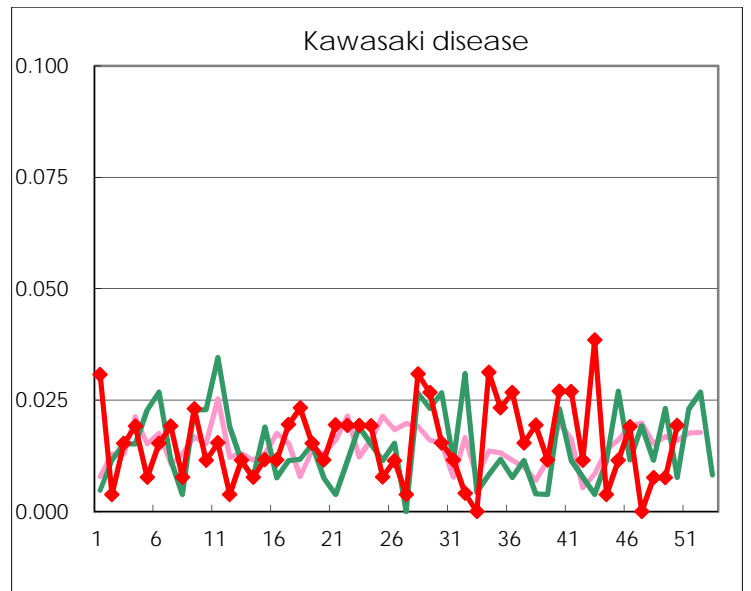
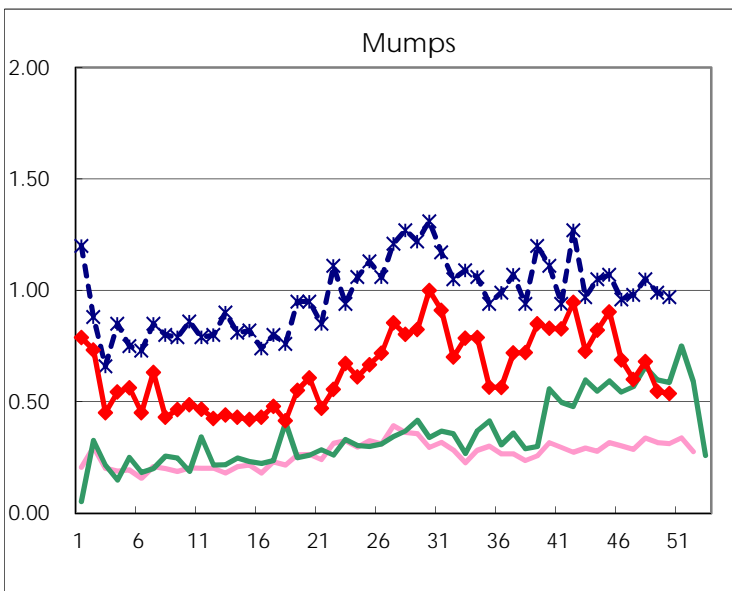
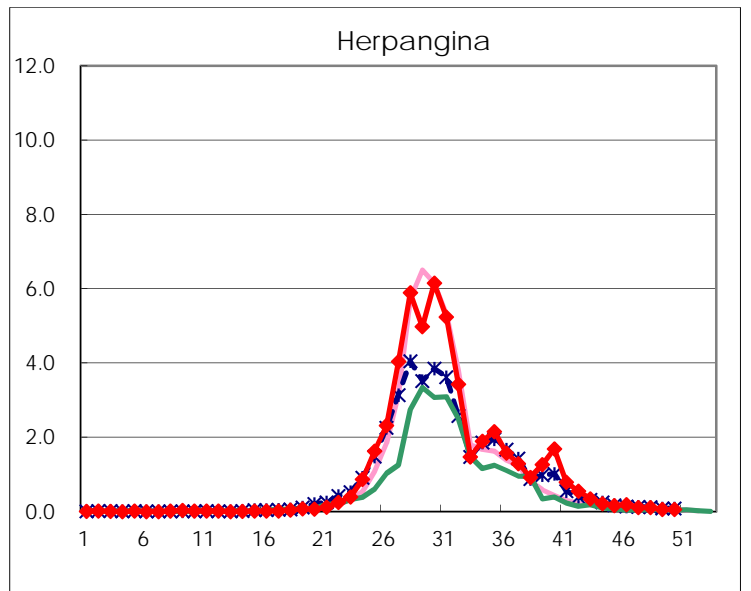
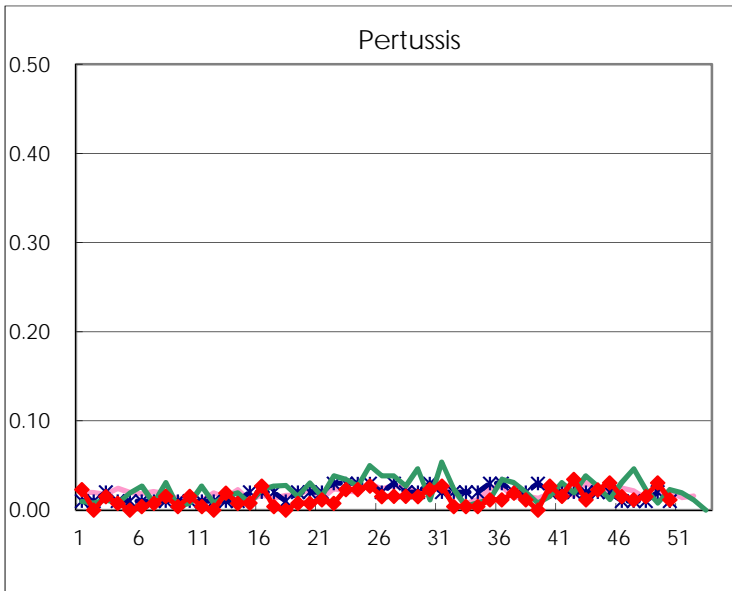
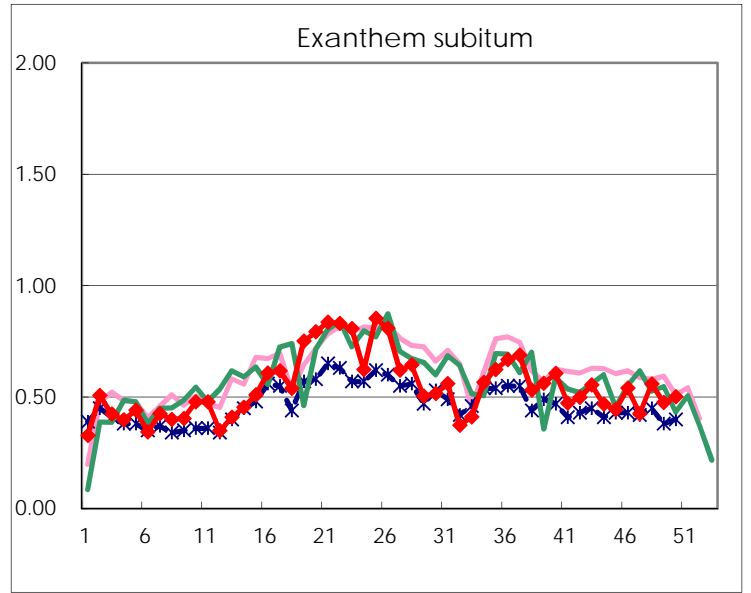
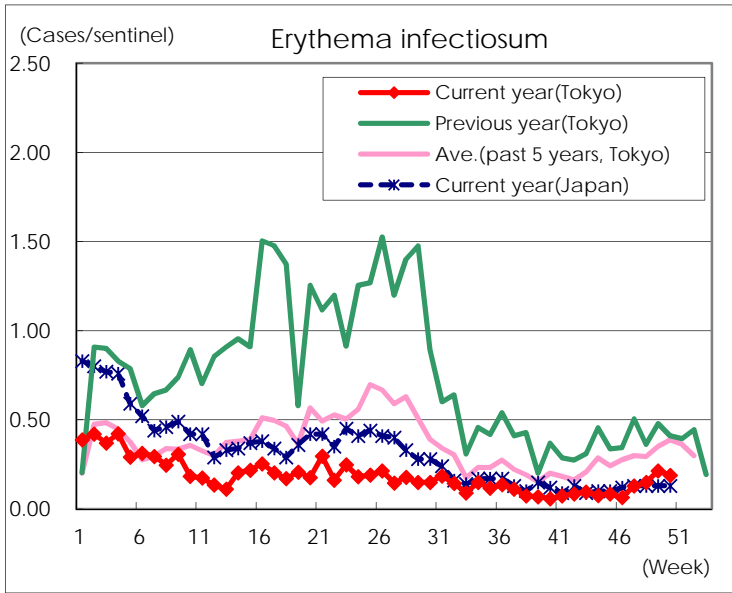
Number of patients with the diseases to be reported
by the designated clinics and hospitals

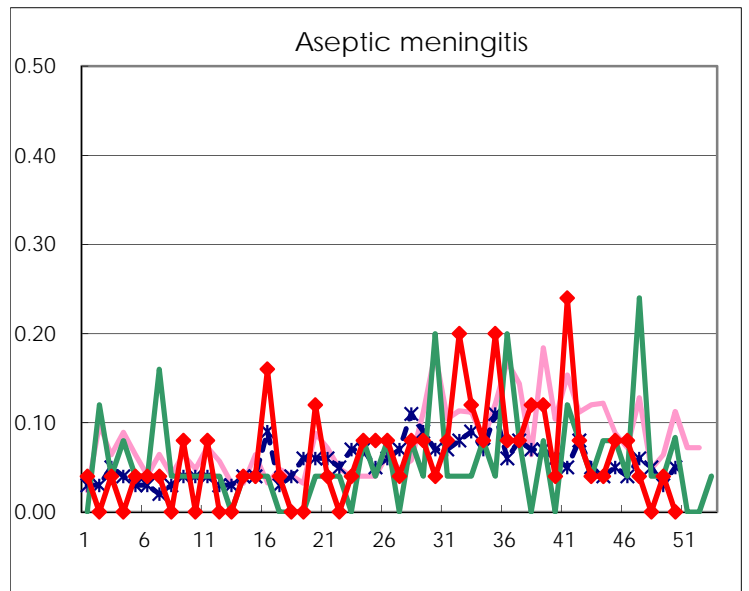
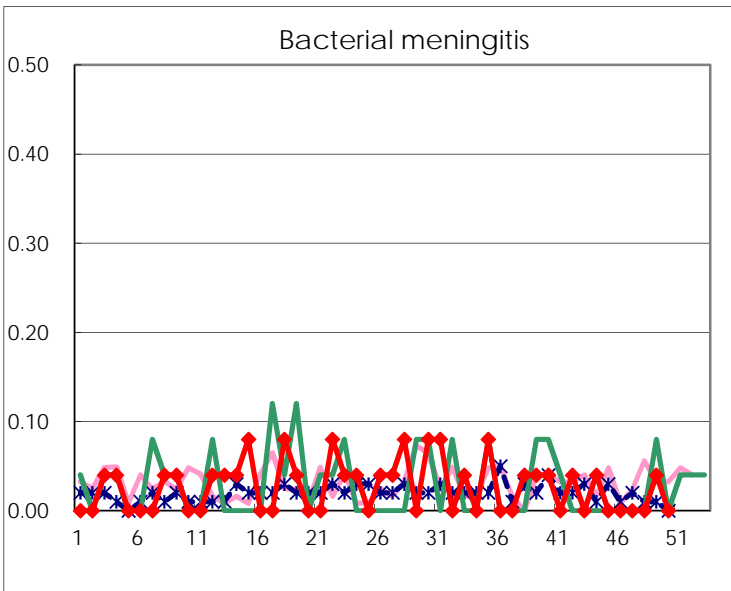
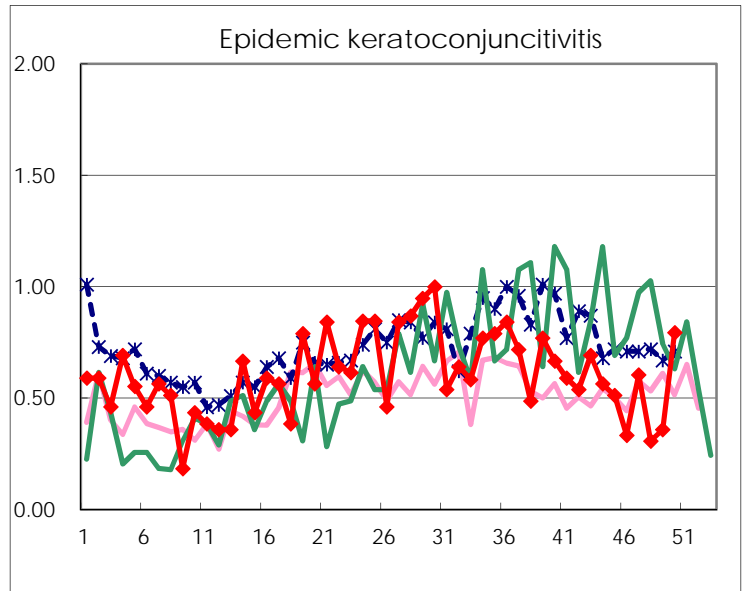
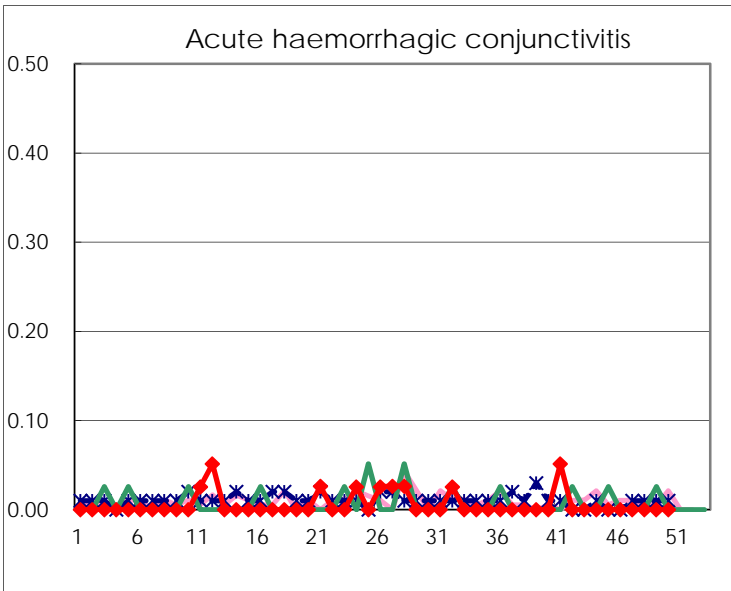
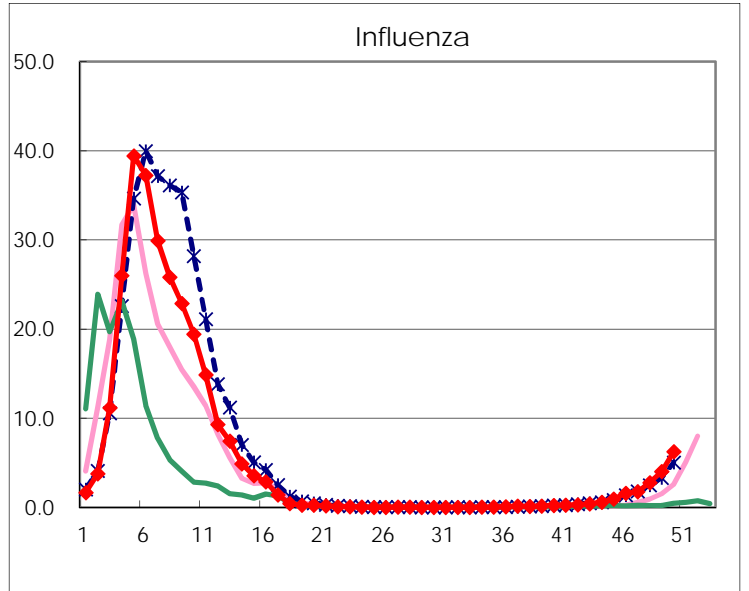
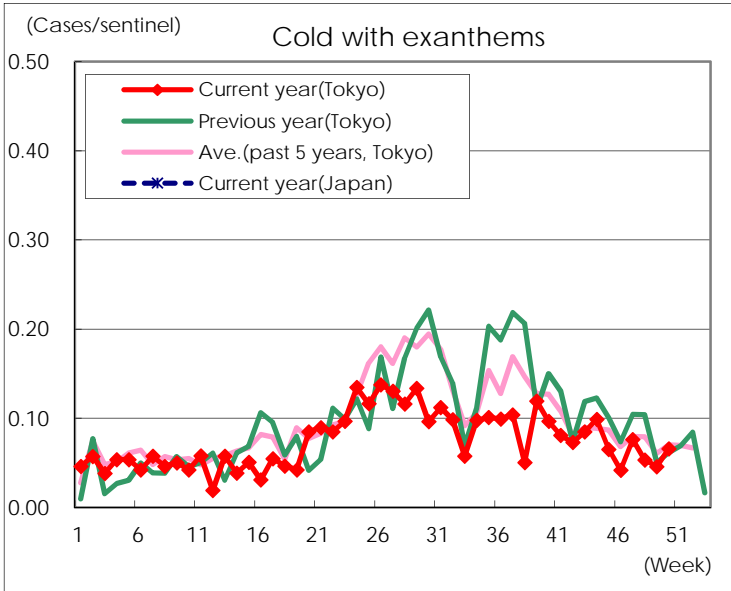
Diseases	Tokyo				
	47th	48th	49th	50th	/sentinel
Respiratory syncytial virus infection	85	76	82	53	0.20
Pharyngoconjunctival fever	110	108	119	115	0.44
Group A streptococcal pharyngitis	532	576	741	673	2.60
Infectious gastroenteritis	5,154	6,997	7,164	7,370	28.46
Chickenpox	138	206	160	182	0.70
Hand, foot, and mouth disease	154	149	117	99	0.38
Erythema infectiosum	34	39	56	49	0.19
Exanthem subitum	112	147	125	130	0.50
Pertussis	3	4	8	3	0.01
Herpangina	29	29	15	15	0.06
Mumps	158	179	144	139	0.54
Kawasaki disease		2	2	5	0.02
Cold with exanthems	20	14	12	17	0.07
Influenza	728	1,160	1,675	2,576	6.24
Acute hemorrhagic conjunctivitis					
Epidemic keratoconjunctivitis	23	12	14	31	0.79
Bacterial meningitis			1		
Aseptic meningitis	1		1		
Mycoplasma pneumonia	28	33	34	34	1.36
Chlamydial pneumonia (excluding psittacosis)	3		1	1	0.04
Infectious gastroenteritis (only by Rotavirus)			1	1	0.04
Influenza-Associated Hospitalizations	2	6	4	17	0.68

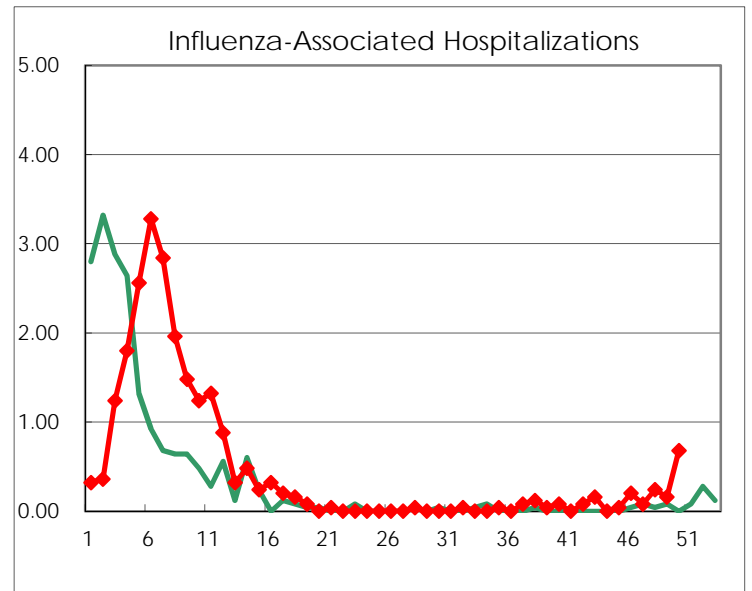
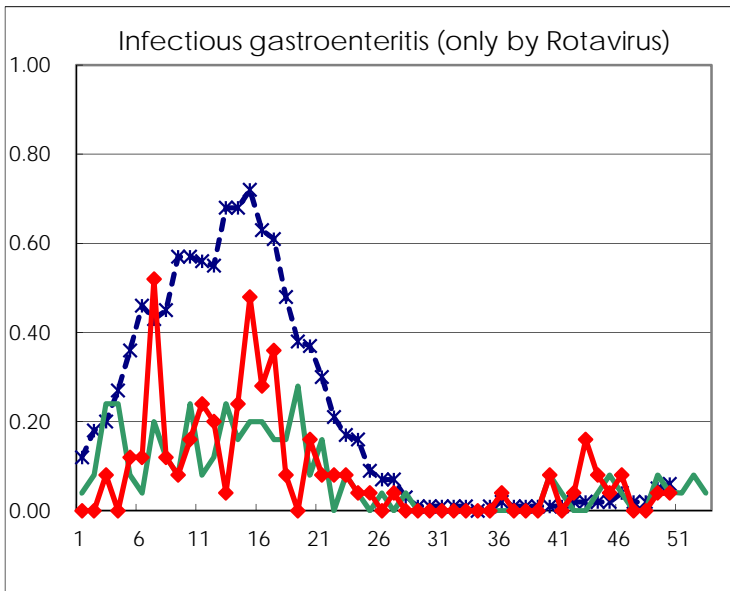
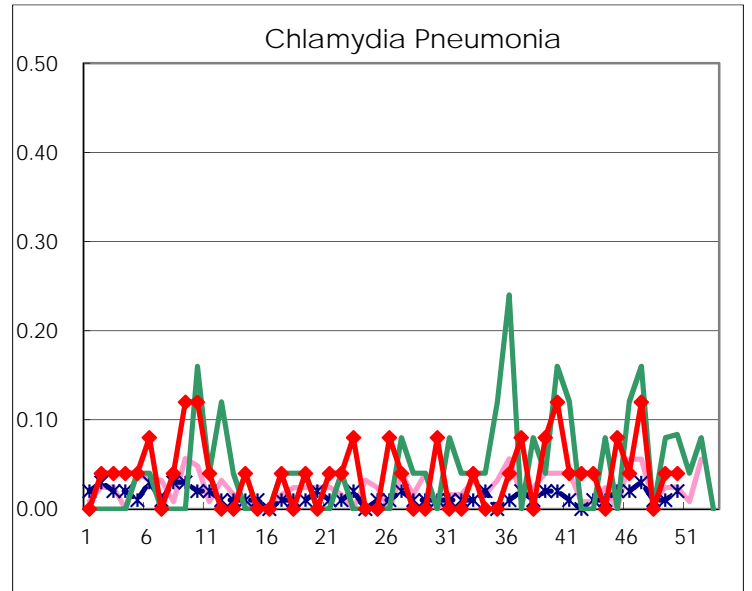
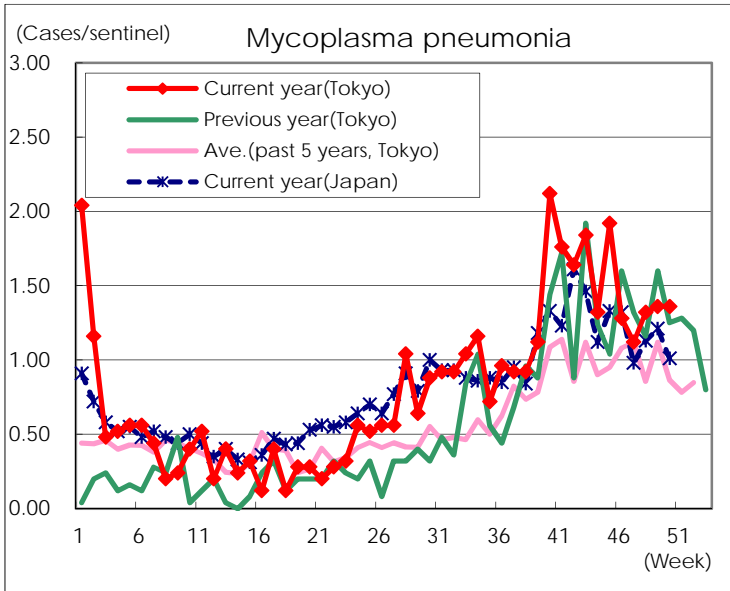
(Blank means 0.)

Disease Trend Graph (weekly reported cases per sentinel in comparison)









Number of sentinel facilities for weekly reporting		
Types of sentinels	Number of sentinels	Sentinels having reported
Pediatric	264	259
Influenza	419	413
Ophthalmic	39	39
Specially-designated	25	25