

## 5 January 2017 / Number 51

### Surveillance System in Tokyo, Japan

The infectious diseases which all physicians must report

All physicians must report to health centers the incidence of the diseases which are shown at page one. Health centers electronically report the individual cases to Tokyo Metropolitan Infectious Disease Surveillance Center.

The infectious diseases required to be reported by the sentinels

The numbers of patients who visit the sentinel clinics or hospitals during a week are reported to health centers in Tokyo. And they electronically report the numbers to Tokyo Metropolitan Infectious Disease Surveillance Center. We have about 500 sentinel clinics and hospitals in Tokyo.

Tokyo Metropolitan Institute of Public Health

TEL:81-3-3363-3213 FAX:81-3-5332-7365

e-mail:[www@tokyo-eiken.go.jp](mailto:www@tokyo-eiken.go.jp)

URL:[idsc.tokyo-eiken.go.jp/](http://idsc.tokyo-eiken.go.jp/)

---

Number of patients with the diseases which all physicians must report

Category	Diseases	Tokyo				Japan		
		48th	49th	50th	51st	Cum 2016	51st	Cum 2016
I	Ebola hemorrhagic fever							
	Crimean-Congo hemorrhagic fever							
	Smallpox							
	South American hemorrhagic fever							
	Plague							
	Marburg disease							
II	Lassa fever							
	Acute poliomyelitis							
	Tuberculosis	66	75	82	51	3,621	327	23,447
	Diphtheria							
	Severe Acute Respiratory Syndrome(SARS)							
	Middle East Respiratory Syndrome (MERS)							
III	Avian influenza H5N1							
	Avian influenza H7N9							
	Cholera					2		10
	Shigellosis	1	2			40		120
	Enterohemorrhagic Escherichia coli infection	6		3	4	450	49	3,619
IV	Typhoid fever					17		51
	Paratyphoid fever					8		19
	Hepatitis E			2		36	3	347
	West Nile fever							
	Hepatitis A		1			64	2	266
	Echinococcosis							20
	Yellow fever							
	Psittacosis					2		6
	Omsk hemorrhagic fever							
	Relapsing fever							7
	Kyasanur forest disease							
	Q fever							
	Rabies							
	Coccidioidomycosis					2		3
	Monkeypox							
	Zika virus infection					3		12
	Severe Fever with Thrombocytopenia Syndrome						1	59
	Hemorrhagic fever with renal syndrome							
	Western equine encephalitis							
	Tick-borne encephalitis							1
	Anthrax							
	Chikungunya fever					4		13
	Scrub typhus(Tsutsugamushi disease)		1		1	7	22	485
	Dengue fever	1		1	2	90	3	335
	Eastern equine encephalitis							
	Avian influenza (excluding H5N1 and H7N9)							
	Nipah virus infection							
	Japanese spotted fever						1	273
	Japanese encephalitis							11
	Hantavirus pulmonary syndrome							
	Herpes B virus infection							
	Glanders							
Brucellosis					1		2	
Venezuelan equine encephalitis								
Hendra virus infection								
Epidemic typhus								
Botulism					1		5	
Malaria					18		53	
Tularemia								
Lyme disease							8	
Lyssavirus infection(excluding rabies)								
Rift valley fever								
Melioidosis								
Legionellosis	4	1	2	3	141	23	1,572	
Leptospirosis					7		74	
Rocky mountain spotted fever								

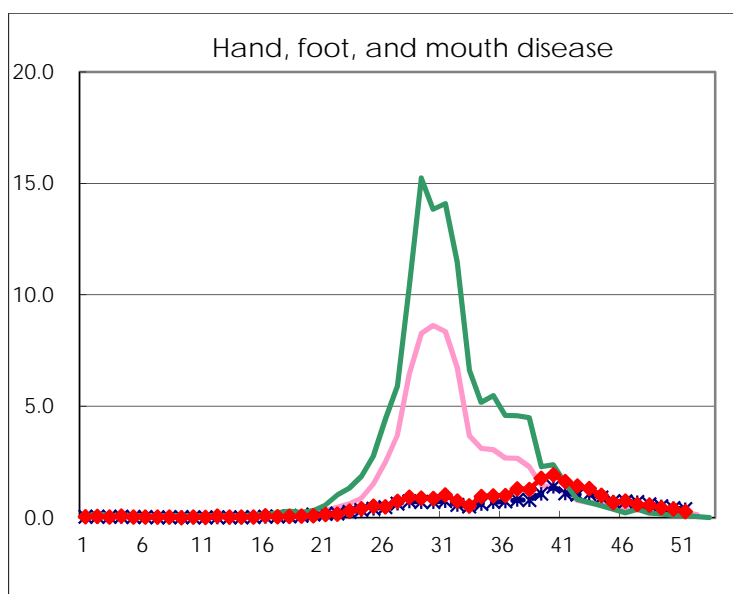
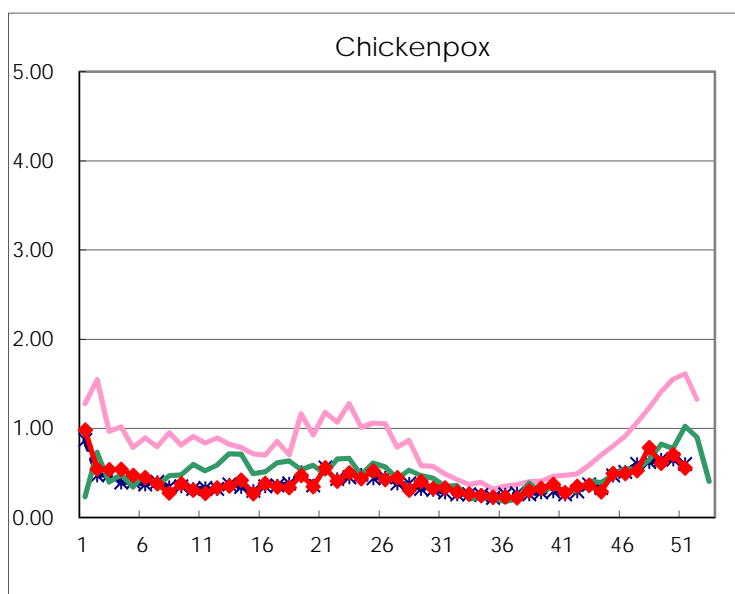
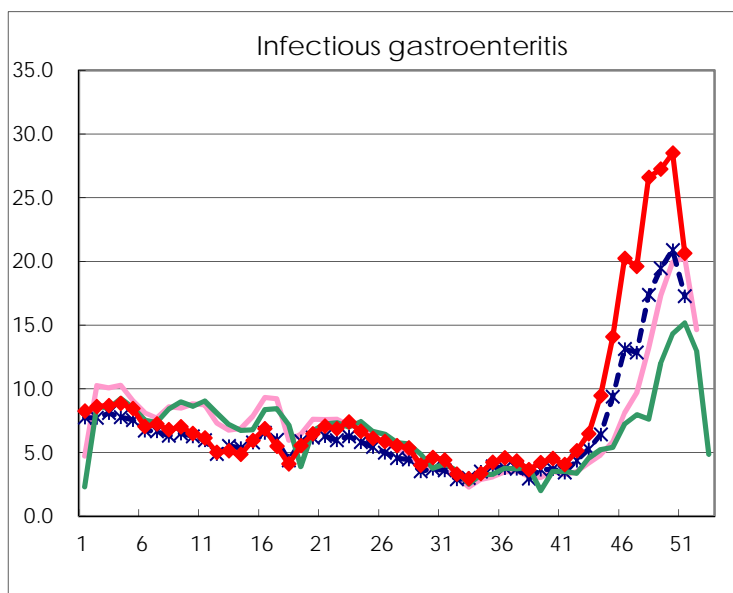
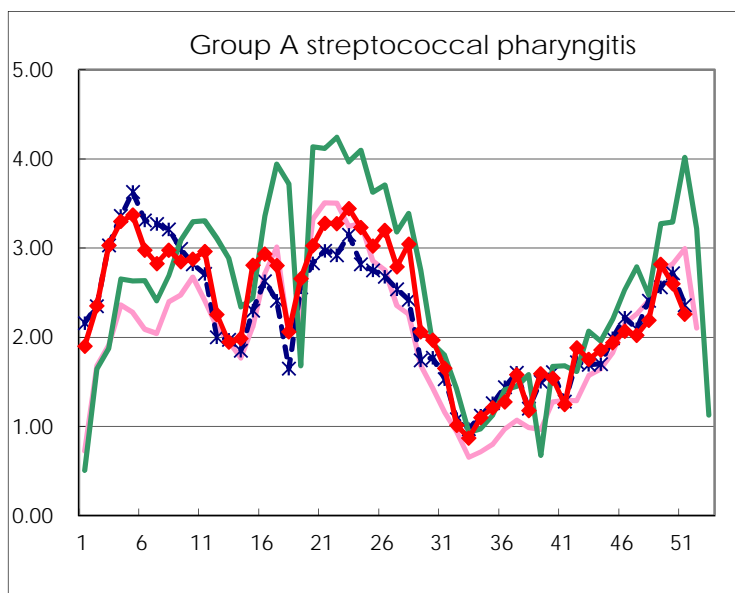
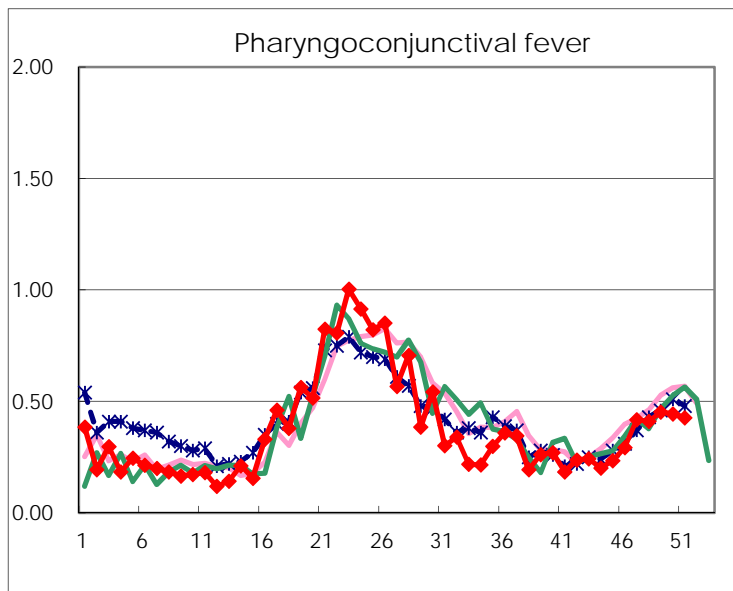
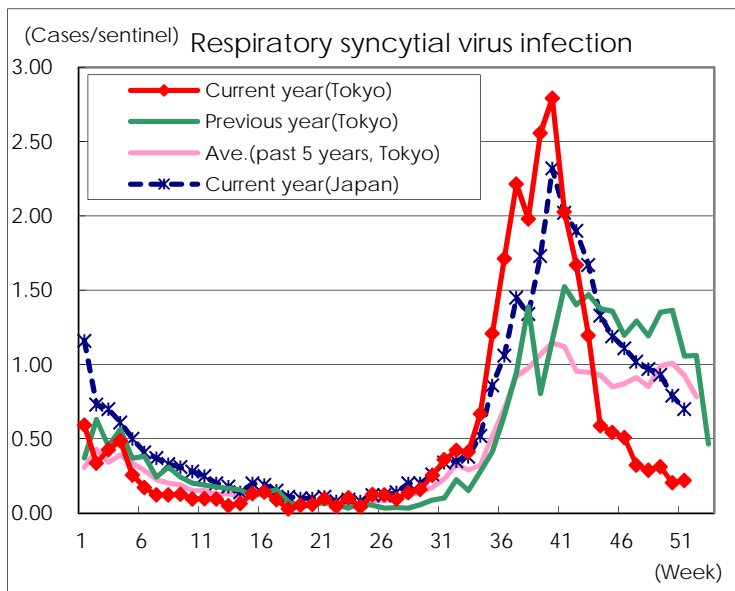
Category	Diseases	Tokyo					Japan	
		48th	49th	50th	51st	Cum 2016	51st	Cum 2016
V	Amebiasis	3	7	7	3	220	17	1,118
	Viral hepatitis(excluding hepatitis A and E)		2	1		68	4	269
	CRE infection	4	2	1	2	186	17	1,528
	Acute encephalitis(excluding JE and WNE)	2	1	1		85	8	739
	Cryptosporidiosis					2		14
	Creutzfeldt-Jakob disease	1				16	2	167
	Severe invasive streptococcal infections(TSLS)	1				63	7	485
	Acquired immunodeficiency syndrome (AIDS)	10	4	10	8	459	13	1,411
	Giardiasis				1	16	1	71
	Invasive <i>Haemophilus influenzae</i> disease			2	1	46	4	301
	Invasive meningococcal disease					5		43
	Invasive pneumococcal disease	11	11	9	10	346	37	2,620
	Varicella (limited to hospitalized case)	2	3			54	5	307
	Congenital rubella syndrome							
	Syphilis	31	33	31	24	1,655	58	4,440
	Disseminated cryptococcosis		1			18		131
	Tetanus					4	1	126
	Vancomycin-resistant <i>S. aureus</i> infection							
	Vancomycin-resistant Enterococcus infection					2	2	61
	Rubella					19		125
Measles					22	5	161	
MDRA infection					1		33	

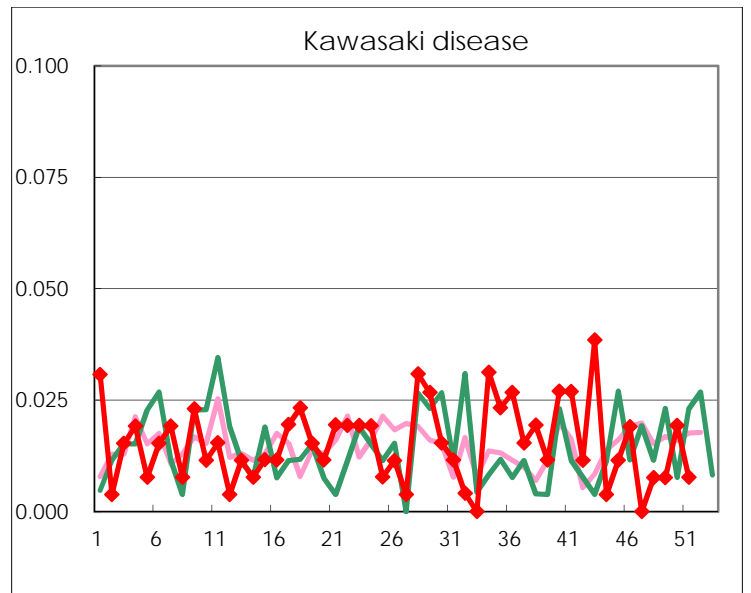
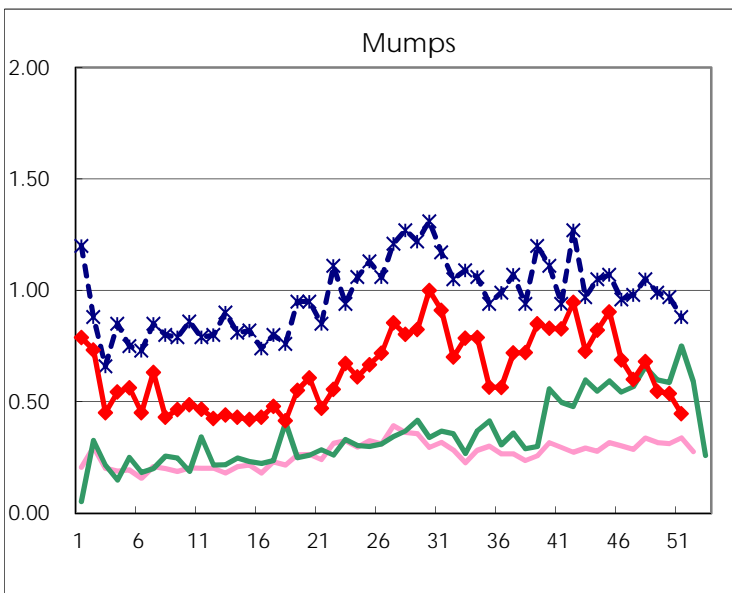
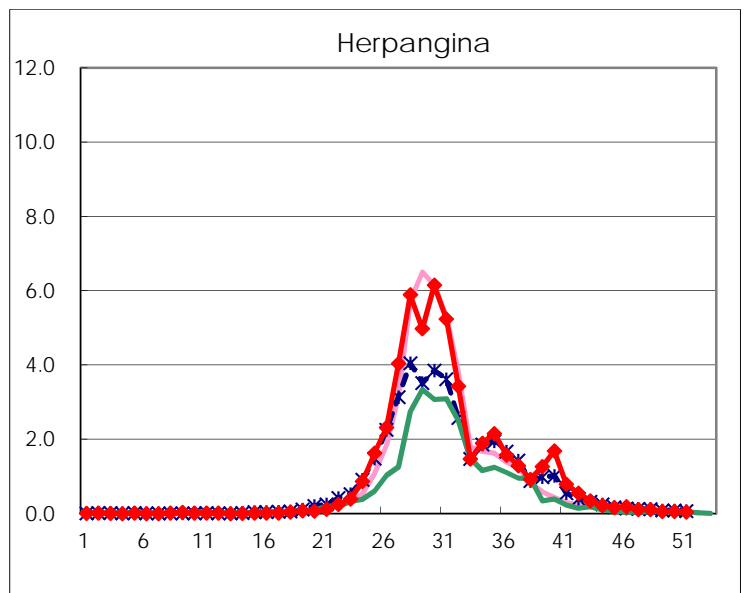
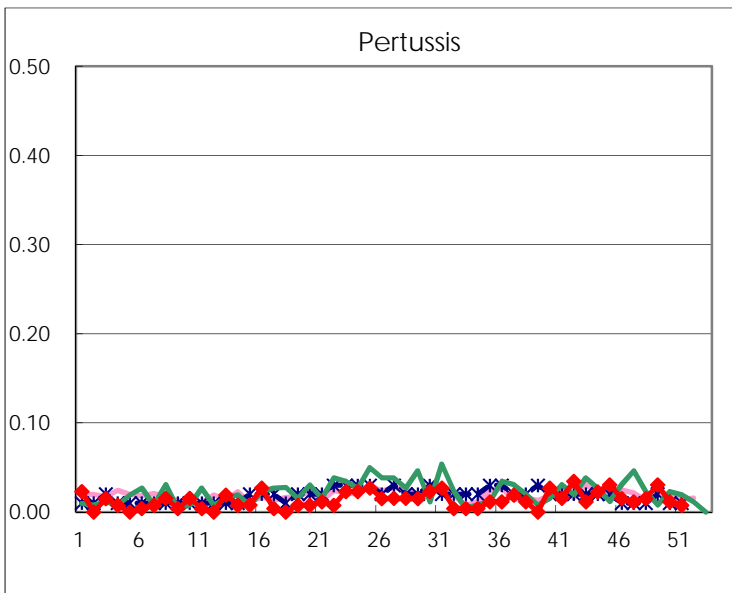
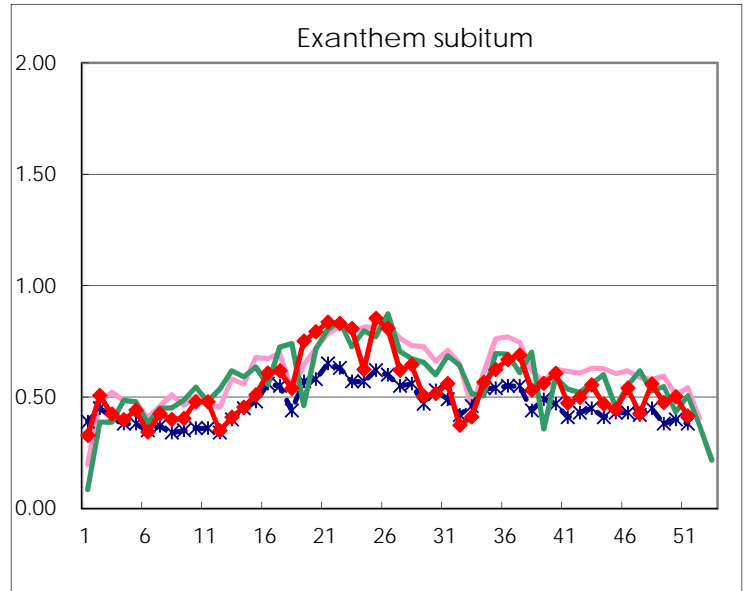
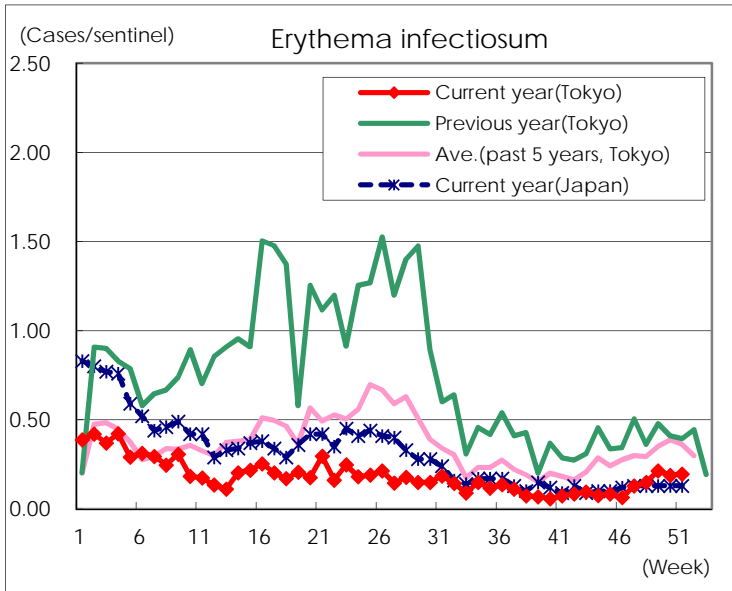
Number of patients with the diseases to be reported  
by the designated clinics and hospitals

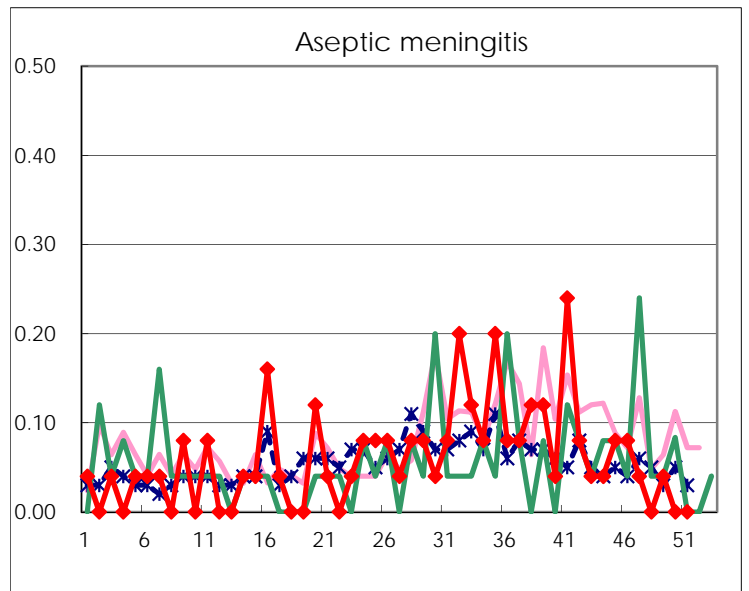
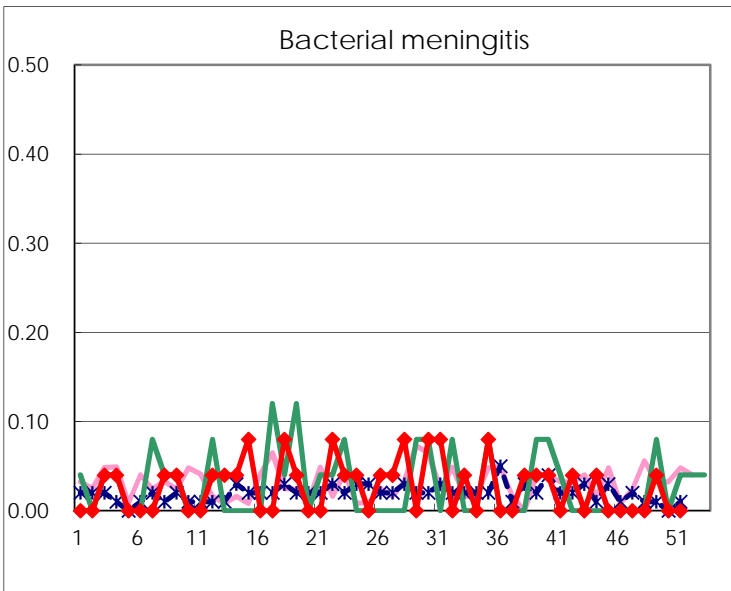
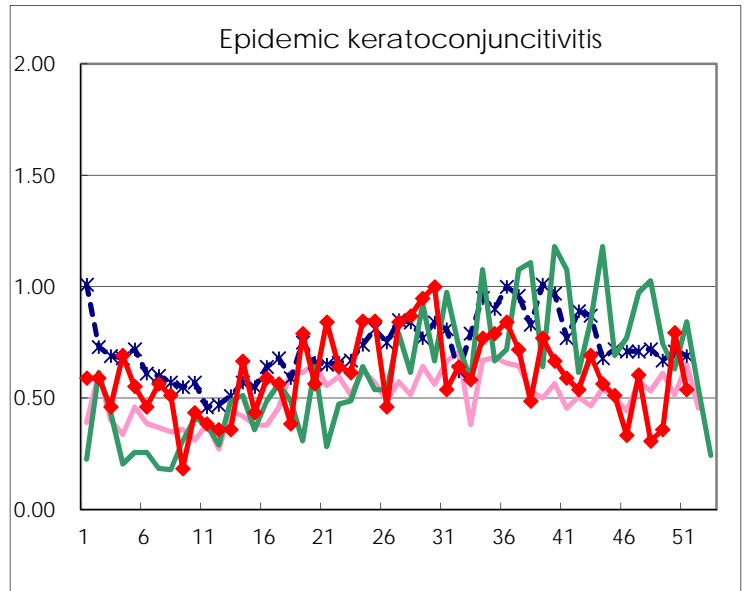
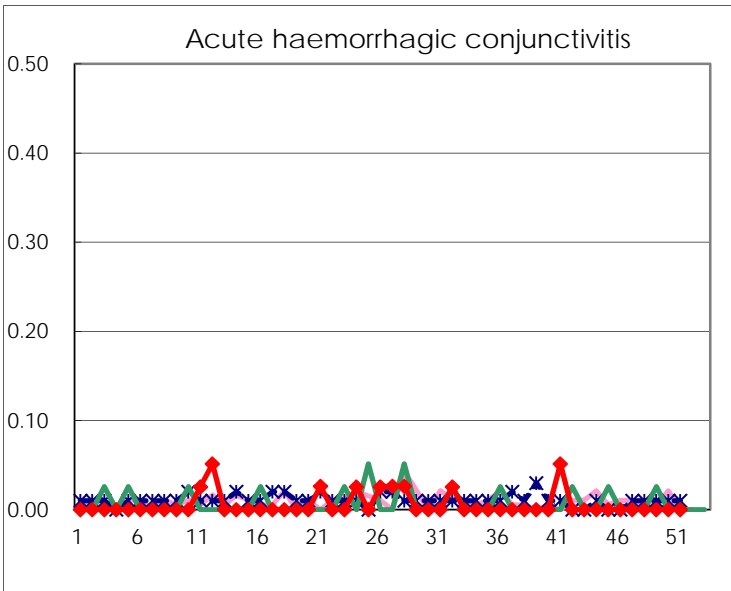
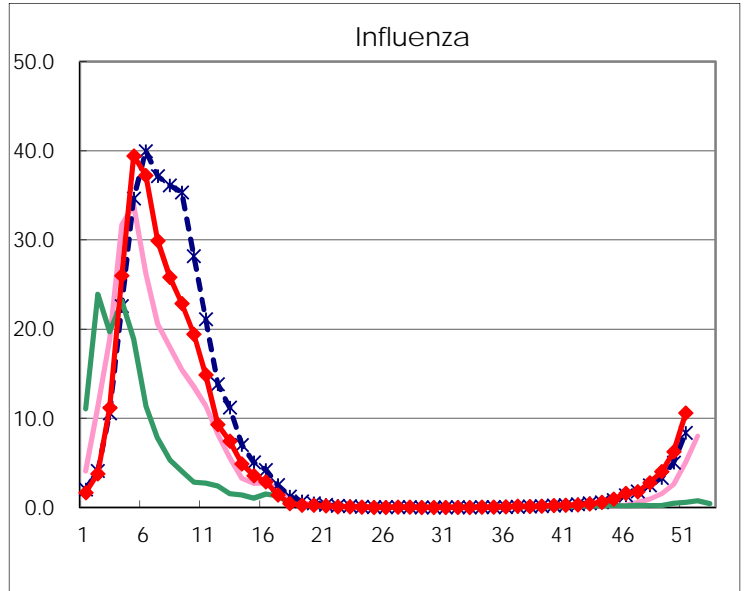
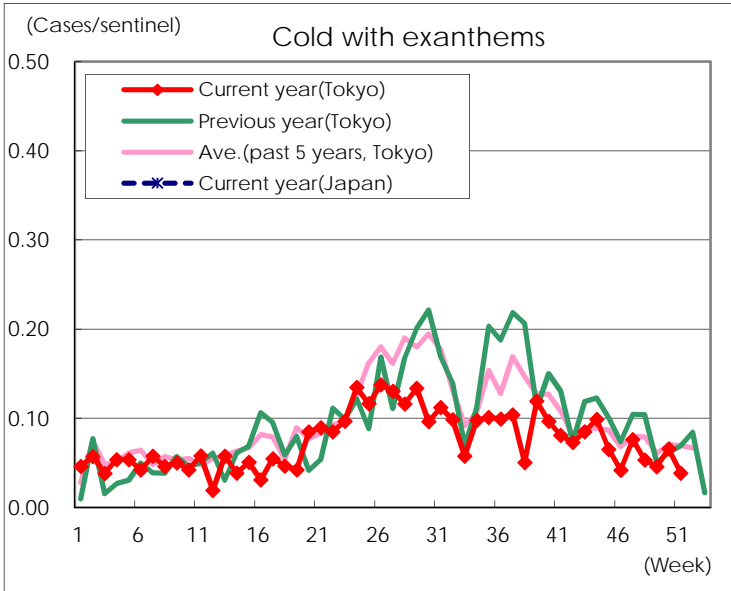
Diseases	Tokyo				
	48th	49th	50th	51st	/sentinel
Respiratory syncytial virus infection	76	82	53	57	0.22
Pharyngoconjunctival fever	108	119	115	111	0.43
Group A streptococcal pharyngitis	576	741	673	587	2.26
Infectious gastroenteritis	6,997	7,164	7,380	5,368	20.65
Chickenpox	206	160	182	144	0.55
Hand, foot, and mouth disease	149	117	99	73	0.28
Erythema infectiosum	39	56	49	51	0.20
Exanthem subitum	147	125	130	108	0.42
Pertussis	4	8	3	2	0.01
Herpangina	29	15	15	12	0.05
Mumps	179	144	139	116	0.45
Kawasaki disease	2	2	5	2	0.01
Cold with exanthems	14	12	17	10	0.04
Influenza	1,160	1,675	2,576	4,360	10.58
Acute hemorrhagic conjunctivitis					
Epidemic keratoconjunctivitis	12	14	31	21	0.54
Bacterial meningitis		1			
Aseptic meningitis		1			
Mycoplasma pneumonia	33	34	34	22	0.88
Chlamydial pneumonia (excluding psittacosis)		1	1	3	0.12
Infectious gastroenteritis (only by Rotavirus)		1	1		
Influenza-Associated Hospitalizations	6	4	17	30	1.20

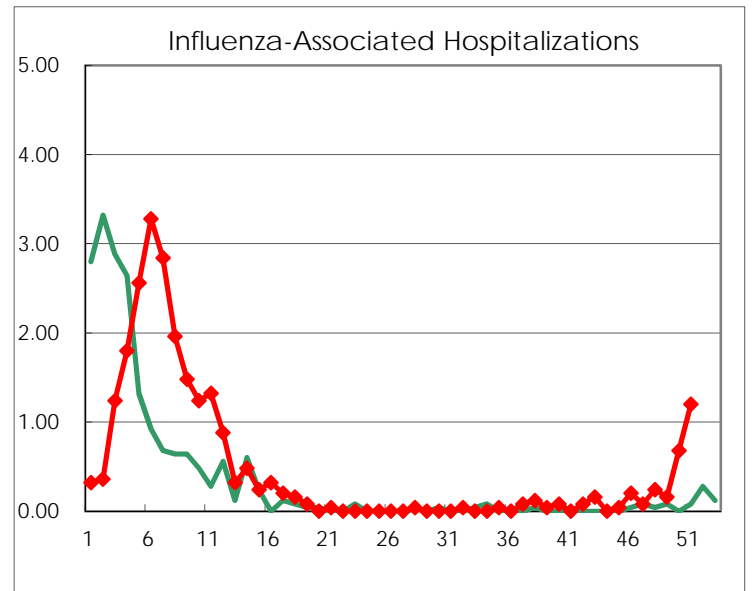
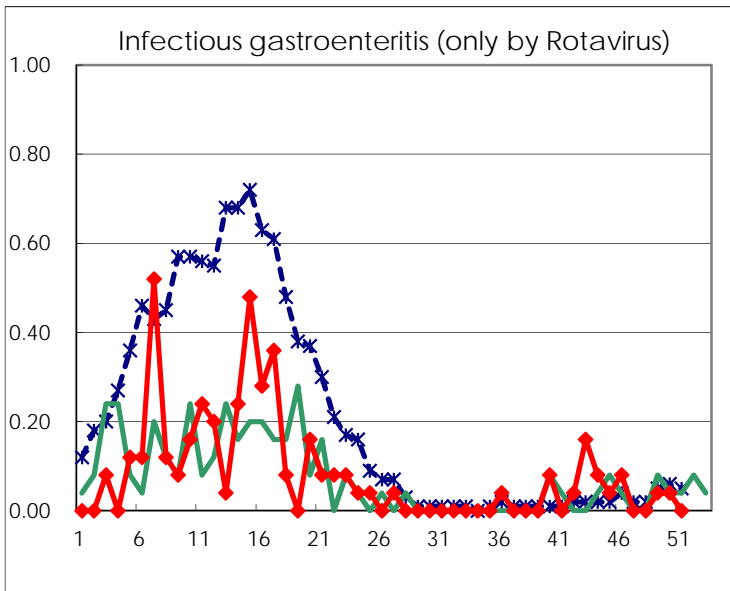
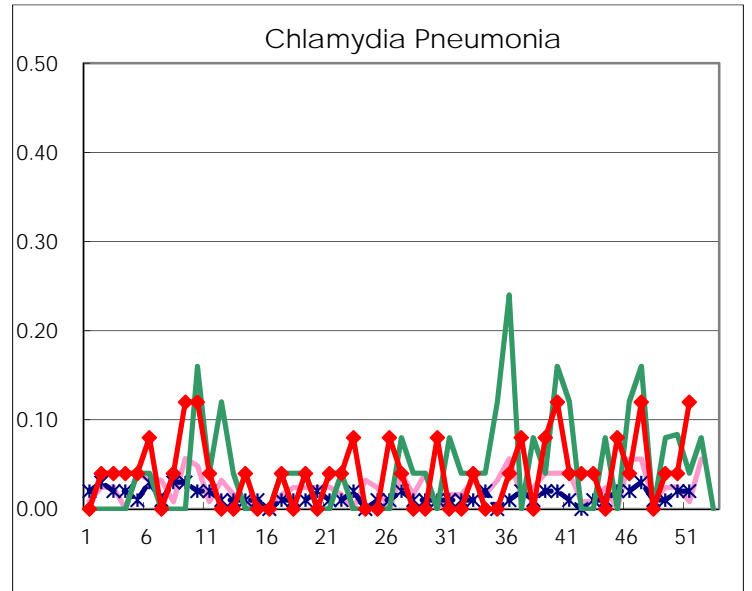
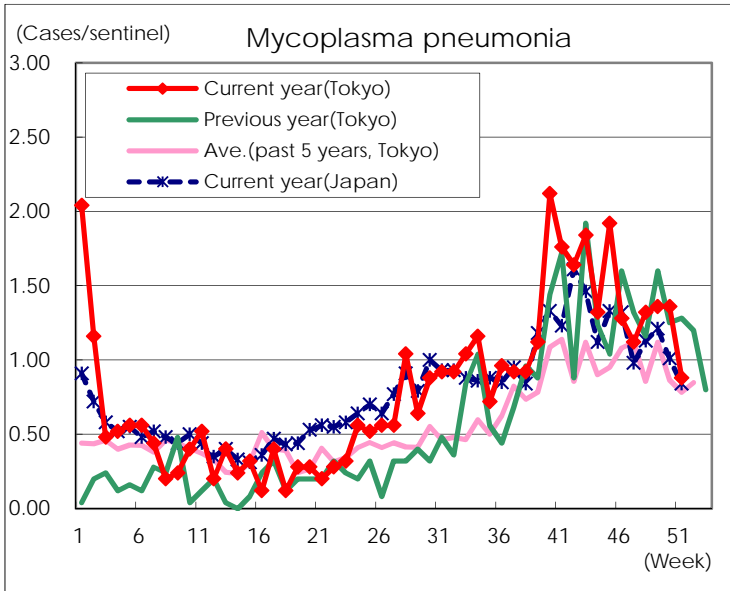
( Blank means 0. )

# Disease Trend Graph (weekly reported cases per sentinel in comparison)









Number of sentinel facilities for weekly reporting		
Types of sentinels	Number of sentinels	Sentinels having reported
Pediatric	264	260
Influenza	419	412
Ophthalmic	39	39
Specially-designated	25	25