

23 February 2017 / Number 7

Surveillance System in Tokyo, Japan

The infectious diseases which all physicians must report

All physicians must report to health centers the incidence of the diseases which are shown at page one. Health centers electronically report the individual cases to Tokyo Metropolitan Infectious Disease Surveillance Center.

The infectious diseases required to be reported by the sentinels

The numbers of patients who visit the sentinel clinics or hospitals during a week are reported to health centers in Tokyo. And they electronically report the numbers to Tokyo Metropolitan Infectious Disease Surveillance Center. We have about 500 sentinel clinics and hospitals in Tokyo.

Tokyo Metropolitan Institute of Public Health

TEL:81-3-3363-3213 FAX:81-3-5332-7365

e-mail:www@tokyo-eiken.go.jp

URL:idsc.tokyo-eiken.go.jp/

Number of patients with the diseases which all physicians must report

Category	Diseases	Tokyo					Japan	
		4th	5th	6th	7th	Cum 2017	7th	Cum 2017
I	Ebola hemorrhagic fever							
	Crimean-Congo hemorrhagic fever							
	Smallpox							
	South American hemorrhagic fever							
	Plague							
	Marburg disease							
	Lassa fever							
II	Acute poliomyelitis							
	Tuberculosis	58	73	69	43	406	294	2,568
	Diphtheria							
	Severe Acute Respiratory Syndrome(SARS)							
	Middle East Respiratory Syndrome (MERS)							
	Avian influenza H5N1							
	Avian influenza H7N9							
III	Cholera							
	Shigellosis	3	1	1		8	2	29
	Enterohemorrhagic Escherichia coli infection	3			1	9	8	80
	Typhoid fever			1		1		2
	Paratyphoid fever							
IV	Hepatitis E	1	3		1	7	5	40
	West Nile fever							
	Hepatitis A			1	2	6	4	22
	Echinococcosis							3
	Yellow fever							
	Psittacosis							
	Omsk hemorrhagic fever							
	Relapsing fever							
	Kyasanur forest disease							
	Q fever							
	Rabies							
	Coccidioidomycosis							
	Monkeypox							
	Zika virus infection							1
	Severe Fever with Thrombocytopenia Syndrome							
	Hemorrhagic fever with renal syndrome							
	Western equine encephalitis							
	Tick-borne encephalitis							
	Anthrax							
	Chikungunya fever							1
	Scrub typhus(Tsutsugamushi disease)		1			2	2	37
	Dengue fever	1	1			7	2	27
	Eastern equine encephalitis							
	Avian influenza (excluding H5N1 and H7N9)							
	Nipah virus infection							
	Japanese spotted fever							3
	Japanese encephalitis							
	Hantavirus pulmonary syndrome							
	Herpes B virus infection							
	Glanders							
	Brucellosis							1
	Venezuelan equine encephalitis							
Hendra virus infection								
Epidemic typhus								
Botulism								
Malaria					2		5	
Tularemia								
Lyme disease								
Lyssavirus infection(excluding rabies)								
Rift valley fever								
Melioidosis								
Legionellosis	1	2	2	4	18	16	121	
Leptospirosis			1		1		1	
Rocky mountain spotted fever								

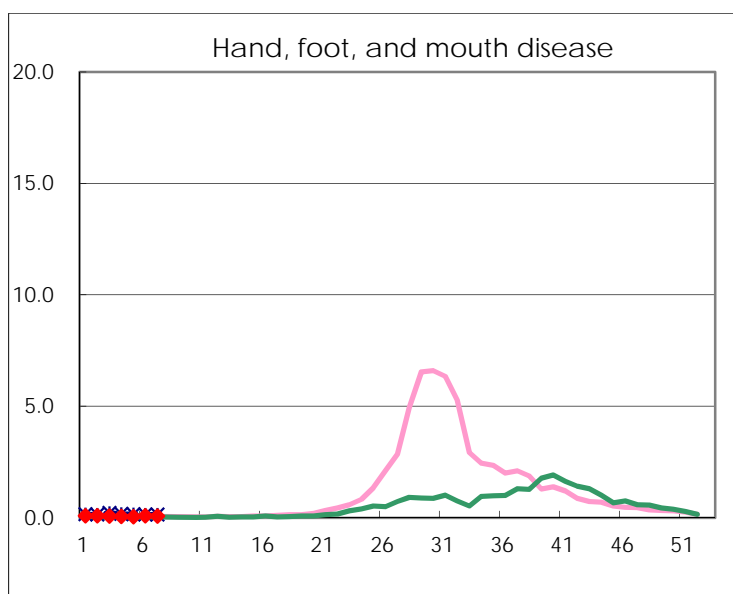
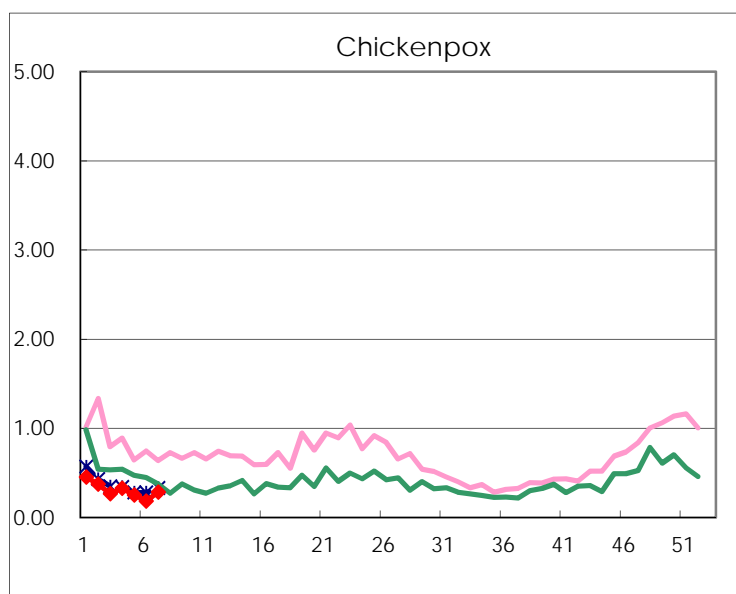
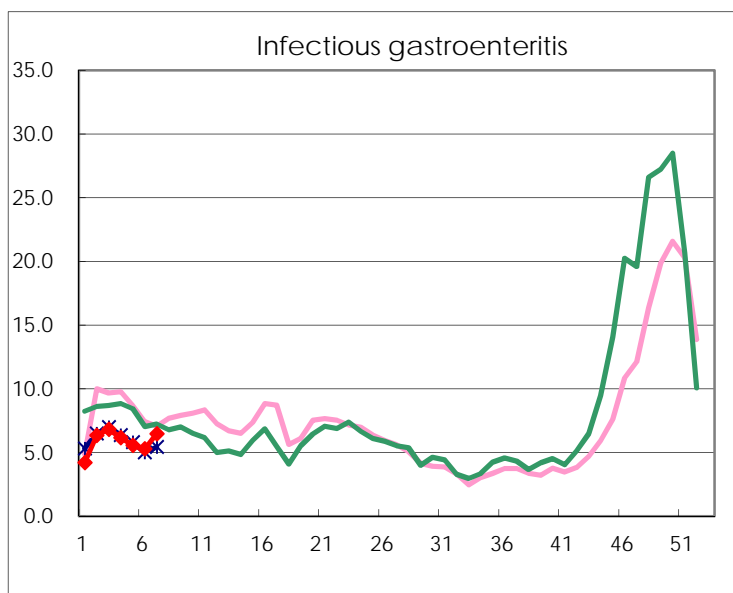
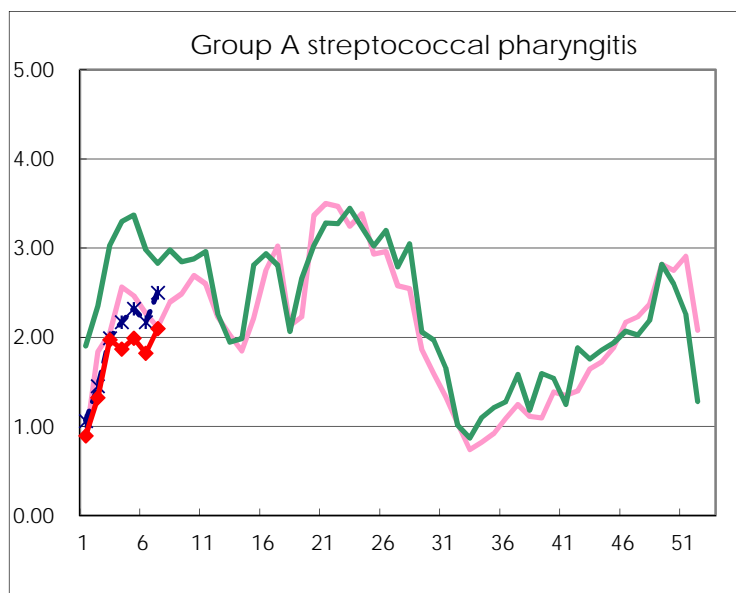
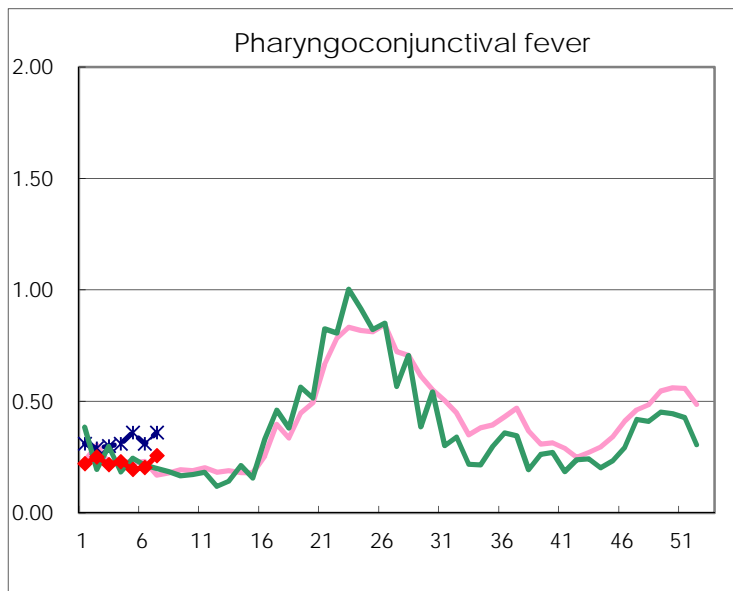
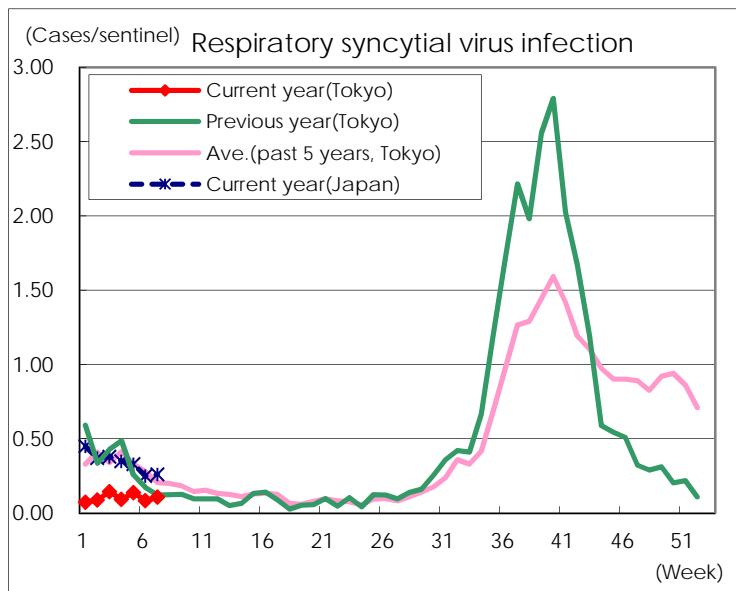
Category	Diseases	Tokyo					Japan	
		4th	5th	6th	7th	Cum 2017	7th	Cum 2017
V	Amebiasis	3	7	4	6	32	19	146
	Viral hepatitis(excluding hepatitis A and E)		1	2	3	8	5	34
	CRE infection	4	4	3	2	24	13	172
	Acute encephalitis(excluding JE and WNE)	2	3	2	2	14	14	118
	Cryptosporidiosis							
	Creutzfeldt-Jakob disease			2	1	3	2	24
	Severe invasive streptococcal infections(TSLS)	2	1		2	10	4	67
	Acquired immunodeficiency syndrome (AIDS)	12	13	11	4	65	4	151
	Giardiasis					1		4
	Invasive <i>Haemophilus influenzae</i> disease	2	2			9	3	56
	Invasive meningococcal disease							4
	Invasive pneumococcal disease	8	8	10	10	63	55	512
	Varicella (limited to hospitalized case)	2	1		1	6	1	23
	Congenital rubella syndrome							
	Syphilis	28	34	25	28	176	74	546
	Disseminated cryptococcosis				1	4	5	22
	Tetanus				1	1	1	5
	Vancomycin-resistant <i>S. aureus</i> infection							
	Vancomycin-resistant Enterococcus infection		1	1		3	2	15
	Rubella						1	8
Measles					2	6	32	
MDRA infection						1	5	

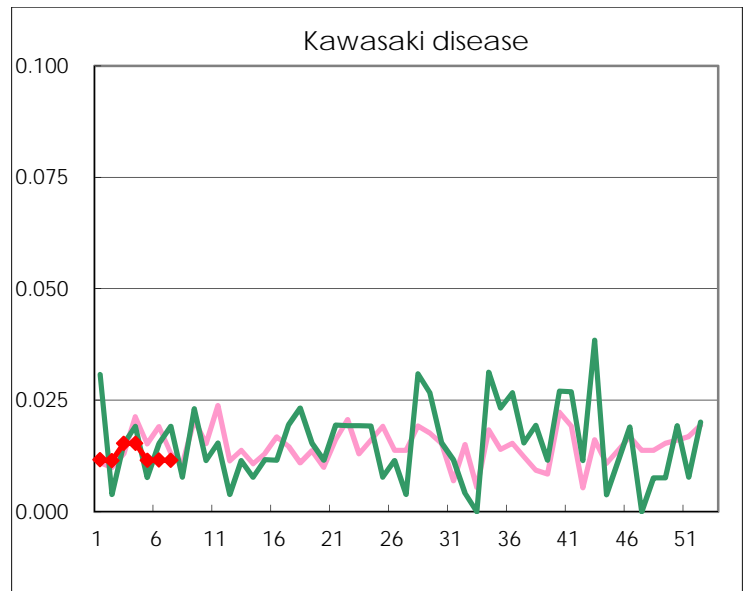
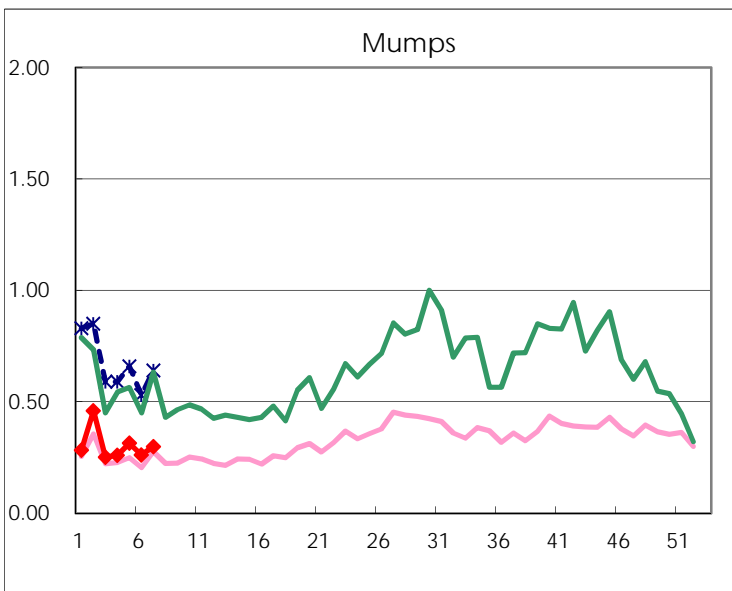
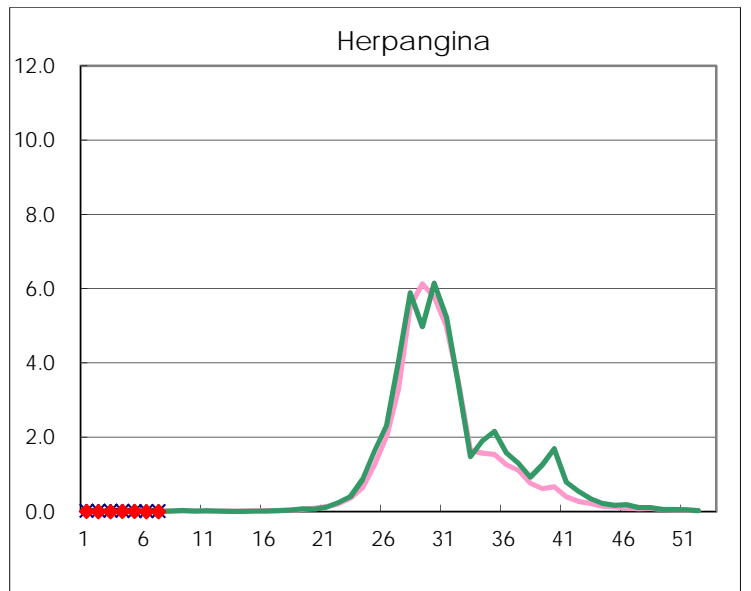
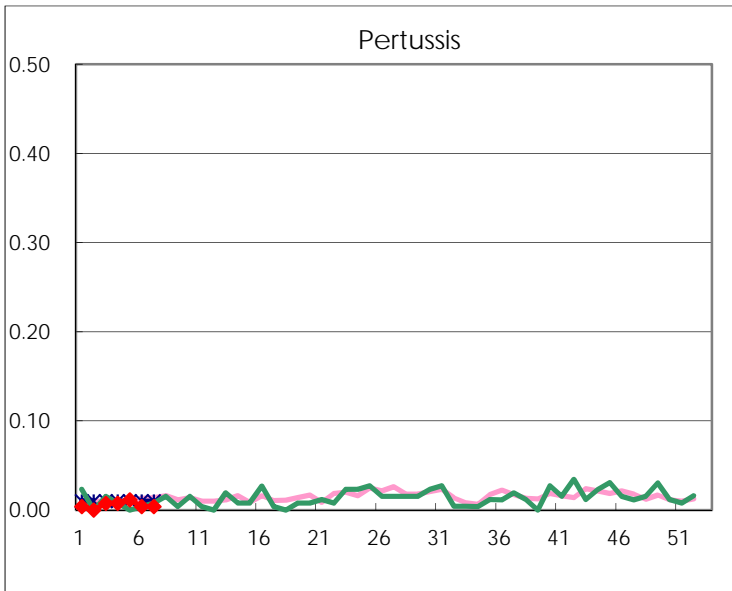
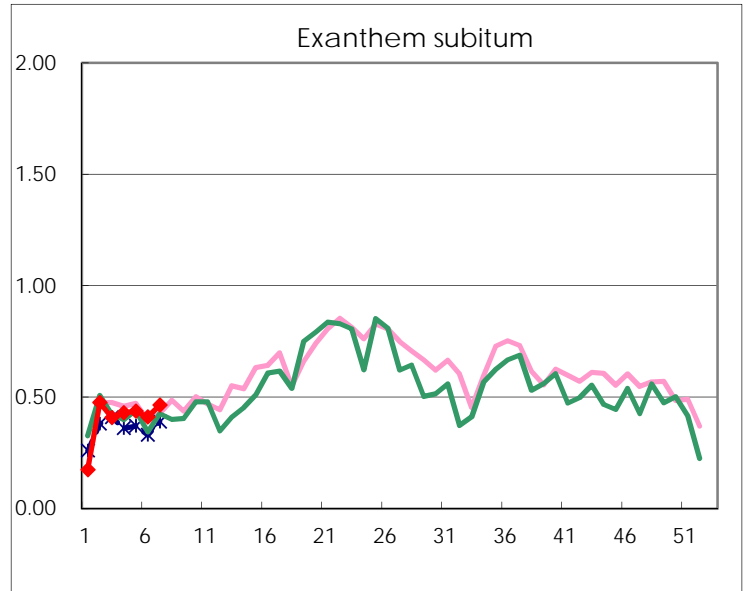
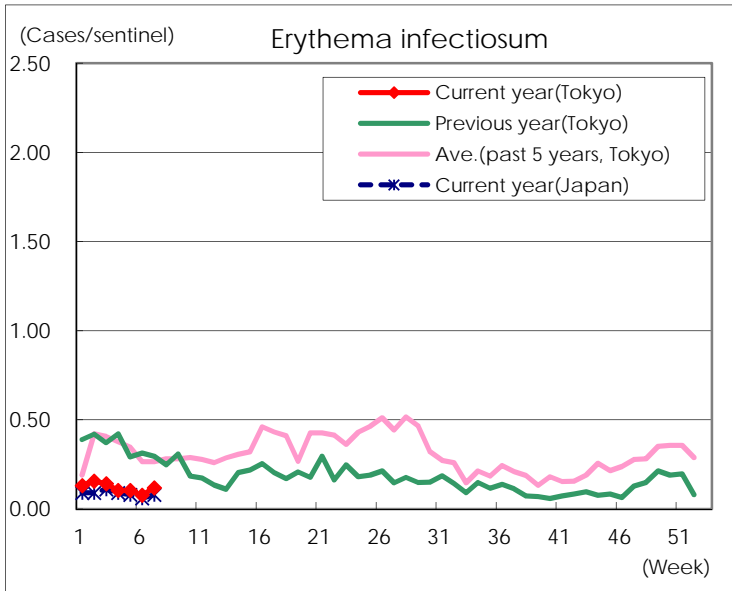
Number of patients with the diseases to be reported
by the designated clinics and hospitals

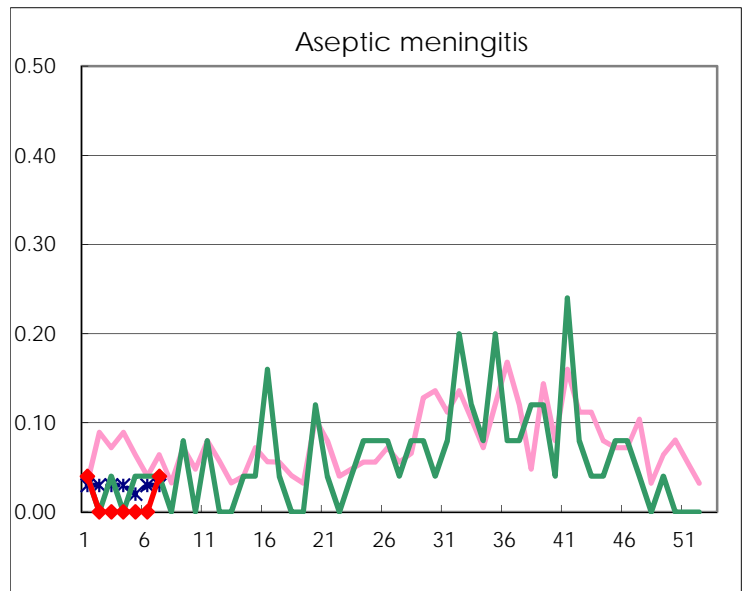
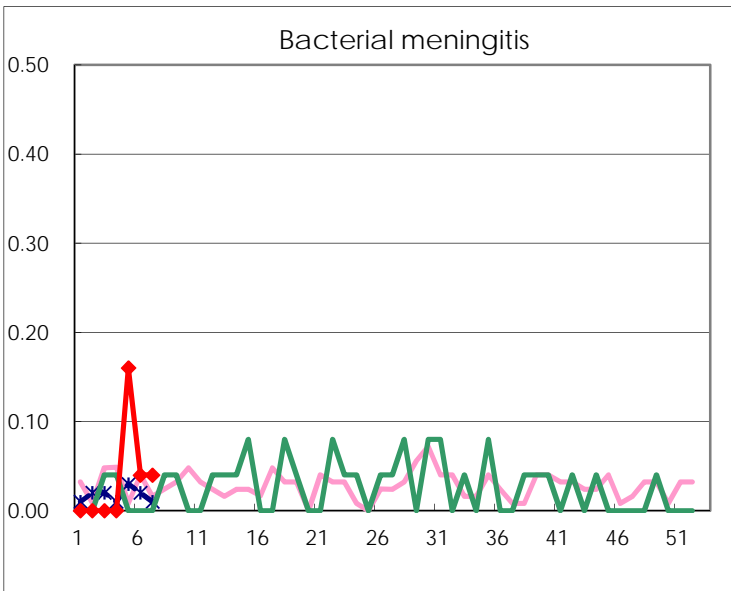
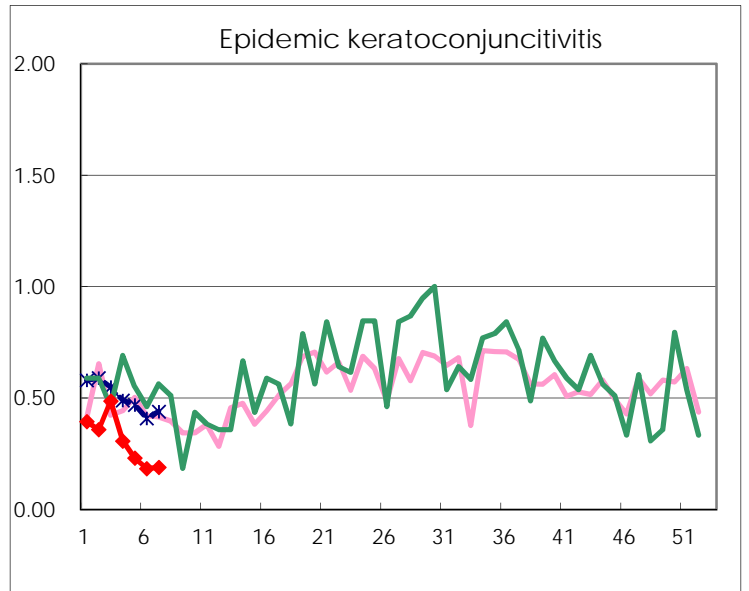
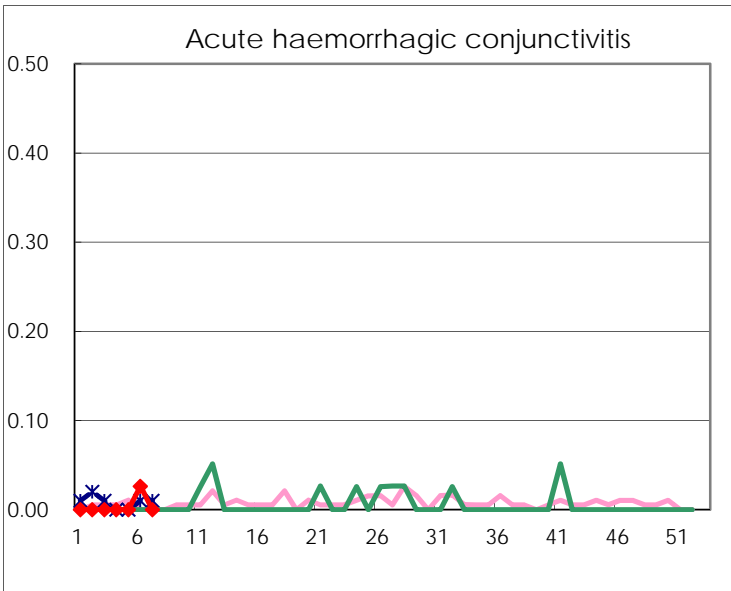
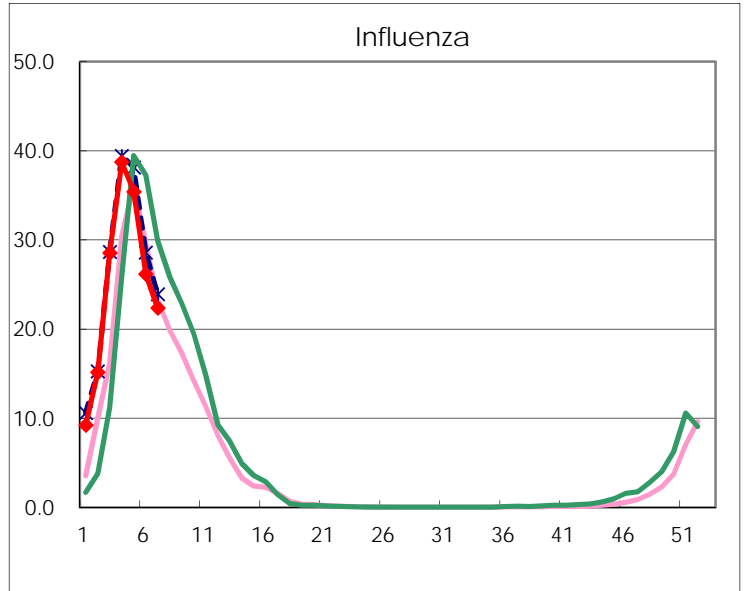
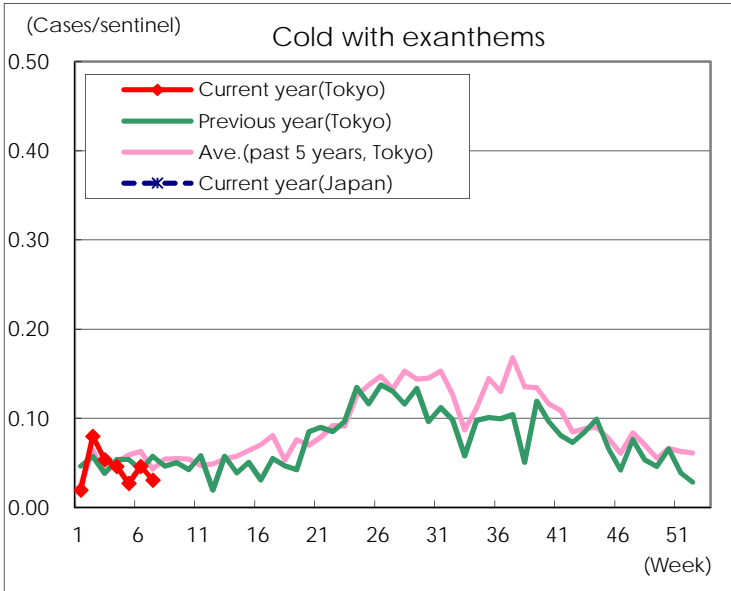
Diseases	Tokyo				
	4th	5th	6th	7th	/sentinel
Respiratory syncytial virus infection	24	36	22	28	0.11
Pharyngoconjunctival fever	60	51	53	67	0.26
Group A streptococcal pharyngitis	487	519	473	547	2.10
Infectious gastroenteritis	1,608	1,453	1,370	1,689	6.47
Chickenpox	85	66	48	74	0.28
Hand, foot, and mouth disease	14	10	21	19	0.07
Erythema infectiosum	27	27	20	31	0.12
Exanthem subitum	112	114	107	121	0.46
Pertussis	2	3	1	1	
Herpangina	2	3		1	
Mumps	68	82	68	78	0.30
Kawasaki disease	4	3	3	3	0.01
Cold with exanthems	12	7	12	8	0.03
Influenza	16,074	14,694	10,813	9,277	22.35
Acute hemorrhagic conjunctivitis			1		
Epidemic keratoconjunctivitis	12	9	7	7	0.19
Bacterial meningitis		4	1	1	0.04
Aseptic meningitis				1	0.04
Mycoplasma pneumonia	8	9	7	7	0.28
Chlamydial pneumonia (excluding psittacosis)	4	5			
Infectious gastroenteritis (only by Rotavirus)	4	4	5	7	0.28
Influenza-Associated Hospitalizations	83	104	96	83	3.32

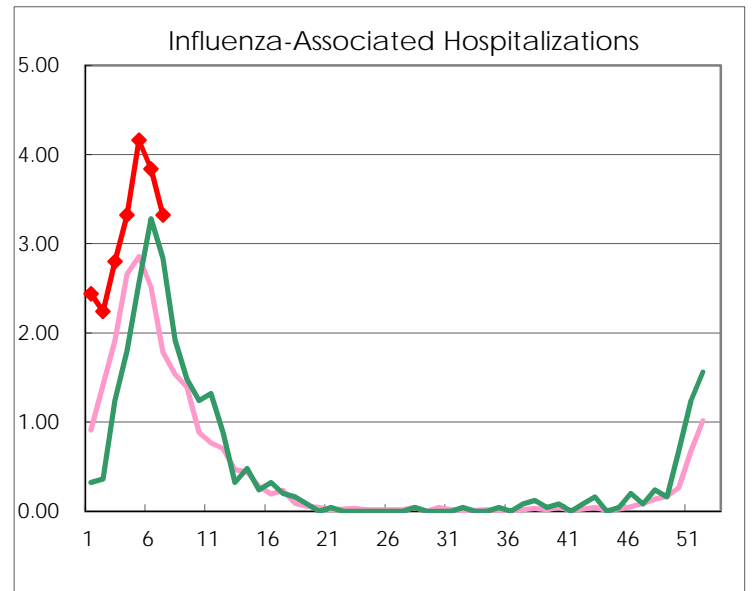
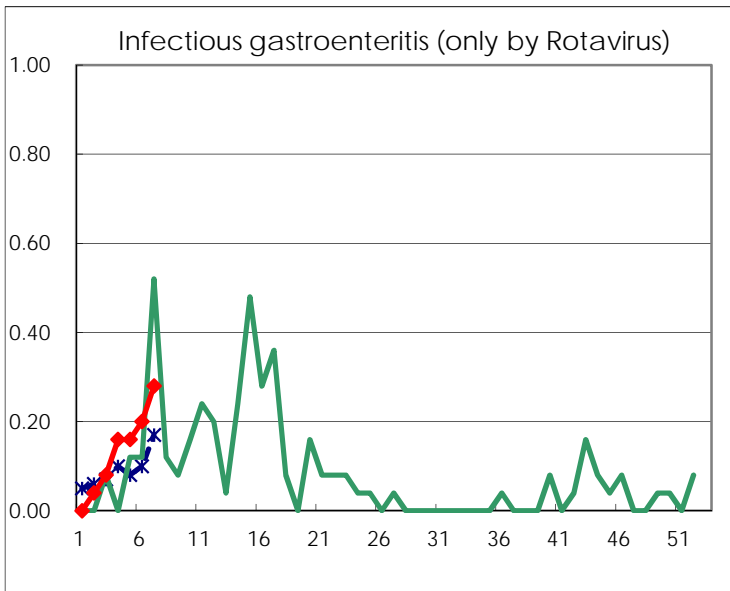
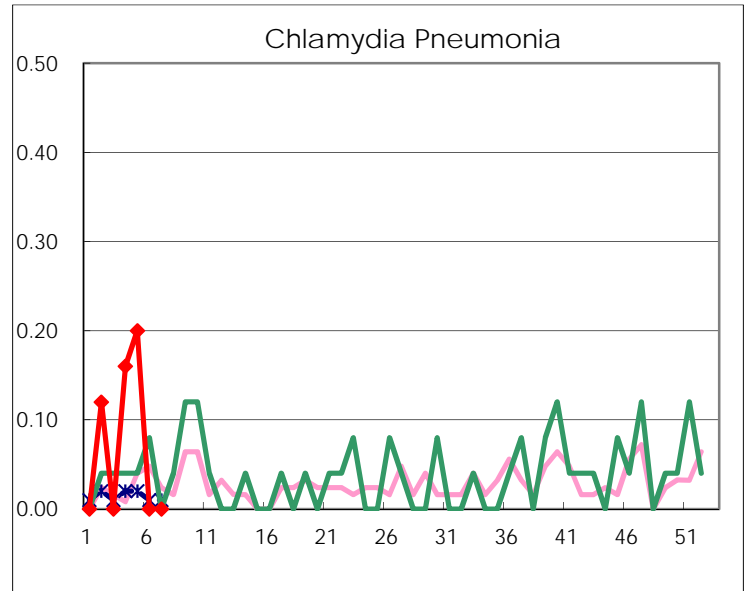
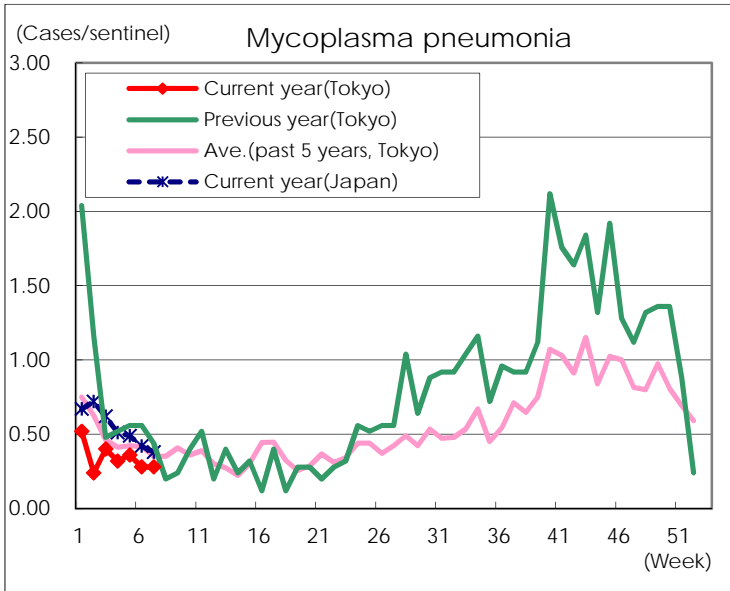
(Blank means 0.)

Disease Trend Graph (weekly reported cases per sentinel in comparison)









Number of sentinel facilities for weekly reporting		
Types of sentinels	Number of sentinels	Sentinels having reported
Pediatric	264	261
Influenza	419	415
Ophthalmic	39	37
Specially-designated	25	25