

**11 May 2017 / Number 18**

## Surveillance System in Tokyo, Japan

The infectious diseases which all physicians must report

All physicians must report to health centers the incidence of the diseases which are shown at page one. Health centers electronically report the individual cases to Tokyo Metropolitan Infectious Disease Surveillance Center.

The infectious diseases required to be reported by the sentinels

The numbers of patients who visit the sentinel clinics or hospitals during a week are reported to health centers in Tokyo. And they electronically report the numbers to Tokyo Metropolitan Infectious Disease Surveillance Center. We have about 500 sentinel clinics and hospitals in Tokyo.

Tokyo Metropolitan Institute of Public Health

TEL:81-3-3363-3213 FAX:81-3-5332-7365

e-mail:[www@tokyo-eiken.go.jp](mailto:www@tokyo-eiken.go.jp)

URL:[idsc.tokyo-eiken.go.jp/](http://idsc.tokyo-eiken.go.jp/)

---

Number of patients with the diseases which all physicians must report

Category	Diseases	Tokyo					Japan		
		15th	16th	17th	18th	Cum 2017	18th	Cum 2017	
I	Ebola hemorrhagic fever								
	Crimean-Congo hemorrhagic fever								
	Smallpox								
	South American hemorrhagic fever								
	Plague								
	Marburg disease								
	Lassa fever								
II	Acute poliomyelitis								
	Tuberculosis	65	59	71	33	1,102	179	7,180	
	Diphtheria								
	Severe Acute Respiratory Syndrome(SARS)								
	Middle East Respiratory Syndrome (MERS)								
	Avian influenza H5N1								
	Avian influenza H7N9								
III	Cholera								
	Shigellosis	1	1			14	1	52	
	Enterohemorrhagic Escherichia coli infection	4	5	2	1	35	21	319	
	Typhoid fever			1		2		14	
	Paratyphoid fever					2		5	
IV	Hepatitis E		2	3	1	23	6	129	
	West Nile fever								
	Hepatitis A	2	4	3		35	1	97	
	Echinococcosis							10	
	Yellow fever								
	Psittacosis							5	
	Omsk hemorrhagic fever								
	Relapsing fever								
	Kyasanur forest disease								
	Q fever								
	Rabies								
	Coccidioidomycosis								
	Monkeypox								
	Zika virus infection							1	
	Severe Fever with Thrombocytopenia Syndrome							2	5
	Hemorrhagic fever with renal syndrome								
	Western equine encephalitis								
	Tick-borne encephalitis								
	Anthrax								
	Chikungunya fever			1		1			1
	Scrub typhus(Tsutsugamushi disease)					2	3		50
	Dengue fever	1		1		17	1		63
	Eastern equine encephalitis								
	Avian influenza (excluding H5N1 and H7N9)								
	Nipah virus infection								
	Japanese spotted fever							1	12
	Japanese encephalitis								
	Hantavirus pulmonary syndrome								
	Herpes B virus infection								
	Glanders								
	Brucellosis								1
	Venezuelan equine encephalitis								
Hendra virus infection									
Epidemic typhus									
Botulism						1		1	
Malaria						4		11	
Tularemia									
Lyme disease								1	
Lyssavirus infection(excluding rabies)									
Rift valley fever									
Melioidosis									
Legionellosis	1	1	1	4	41	12		389	
Leptospirosis						1		2	
Rocky mountain spotted fever									

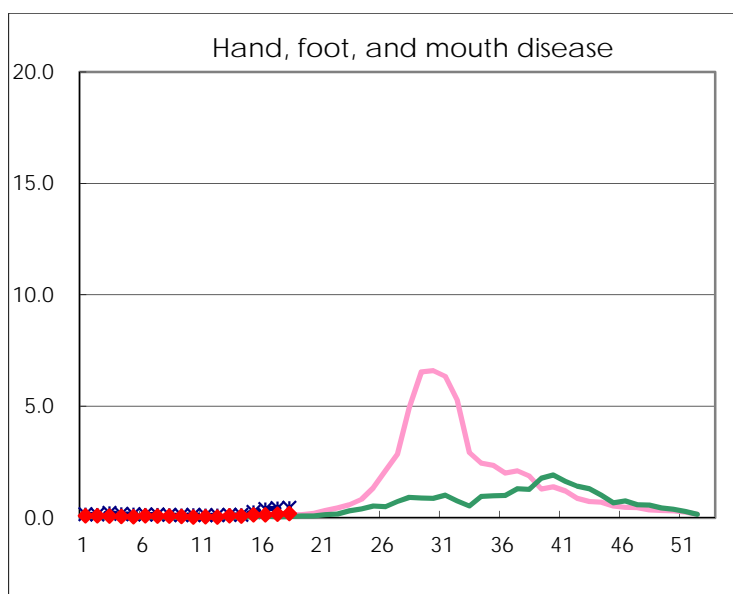
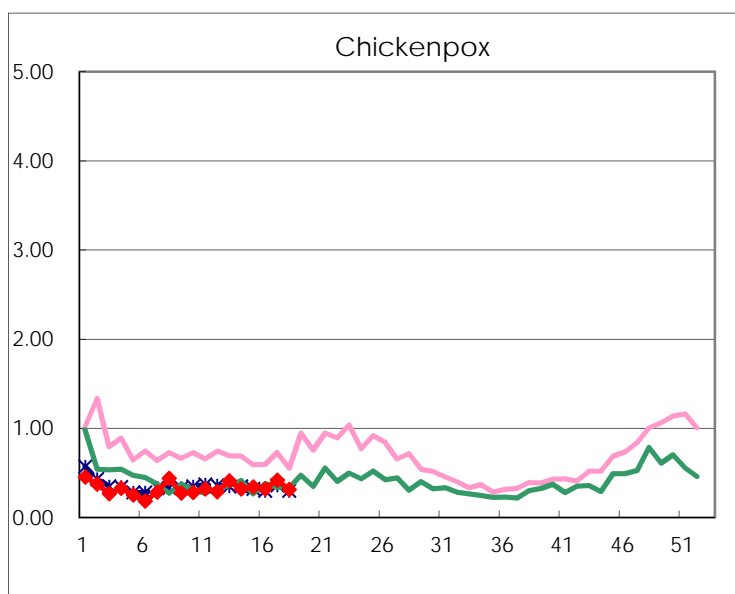
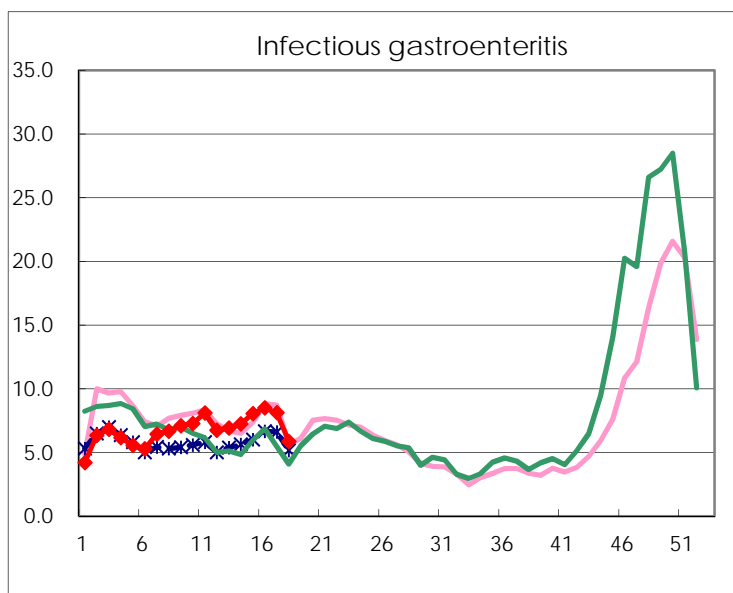
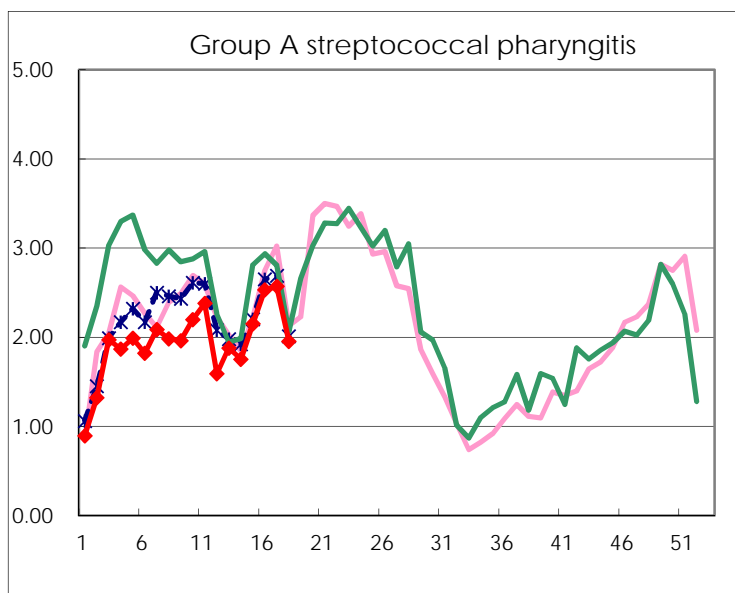
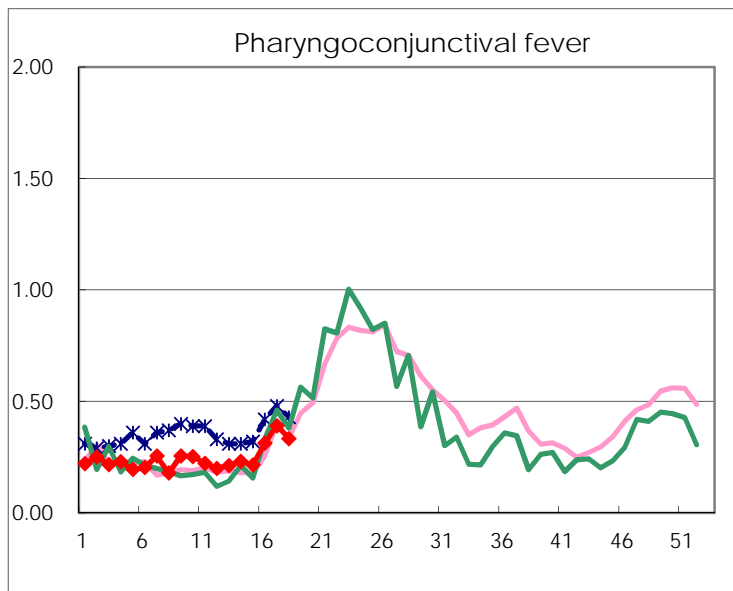
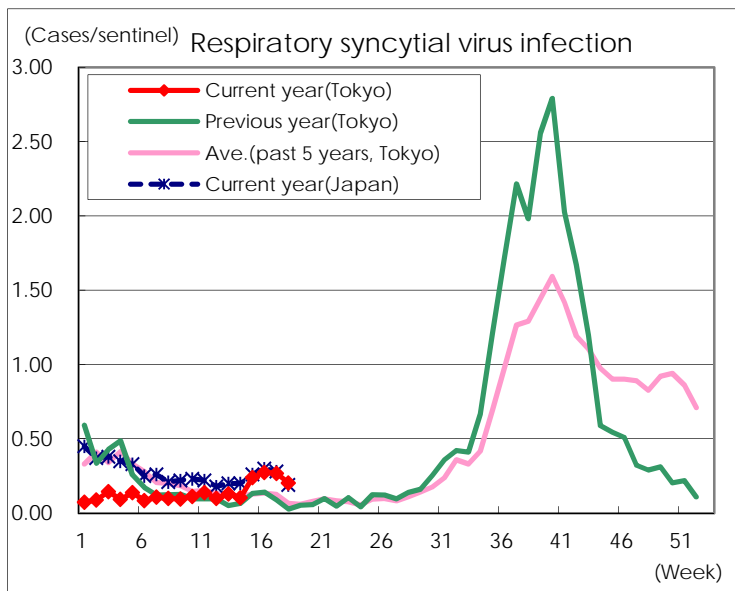
Category	Diseases	Tokyo					Japan	
		15th	16th	17th	18th	Cum 2017	18th	Cum 2017
V	Amebiasis	5	2	3		72	10	357
	Viral hepatitis(excluding hepatitis A and E)		2	1		21	2	96
	CRE infection	5	5	2	3	63	9	455
	Acute encephalitis(excluding JE and WNE)	1	3	1	2	28	2	264
	Cryptosporidiosis							2
	Creutzfeldt-Jakob disease					7	1	56
	Severe invasive streptococcal infections(TSLS)	3		1	1	27	1	199
	Acquired immunodeficiency syndrome (AIDS)	10	11	7	3	152	9	429
	Giardiasis	1	1	1		10		24
	Invasive <i>Haemophilus influenzae</i> disease	1			1	15	4	130
	Invasive meningococcal disease					1		11
	Invasive pneumococcal disease	10	10	10	11	183	41	1,352
	Varicella (limited to hospitalized case)		2		2	15	4	82
	Congenital rubella syndrome							
	Syphilis	34	34	37	17	510	38	1,576
	Disseminated cryptococcosis	2				7	2	52
	Tetanus					1	2	21
	Vancomycin-resistant <i>S. aureus</i> infection							
	Vancomycin-resistant Enterococcus infection		1			4		29
	Rubella	1	1	1	1	6	1	33
Measles	3		1		17		157	
MDRA infection		1			1		11	

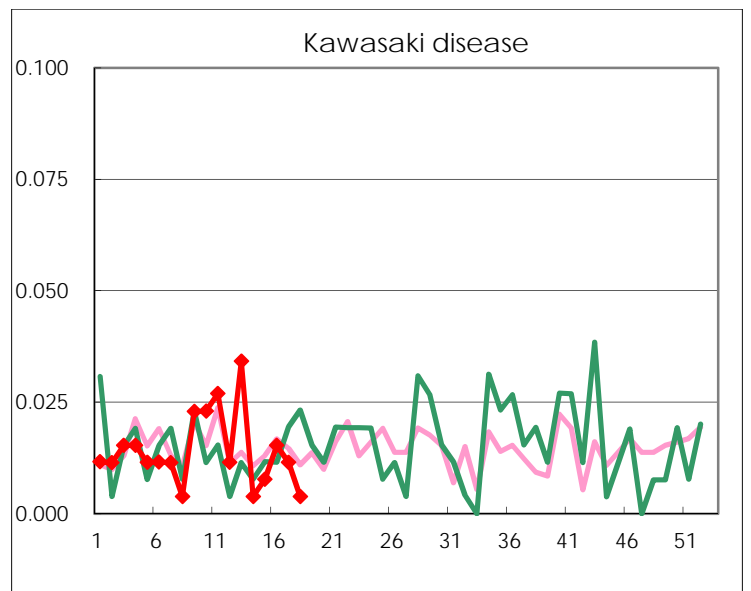
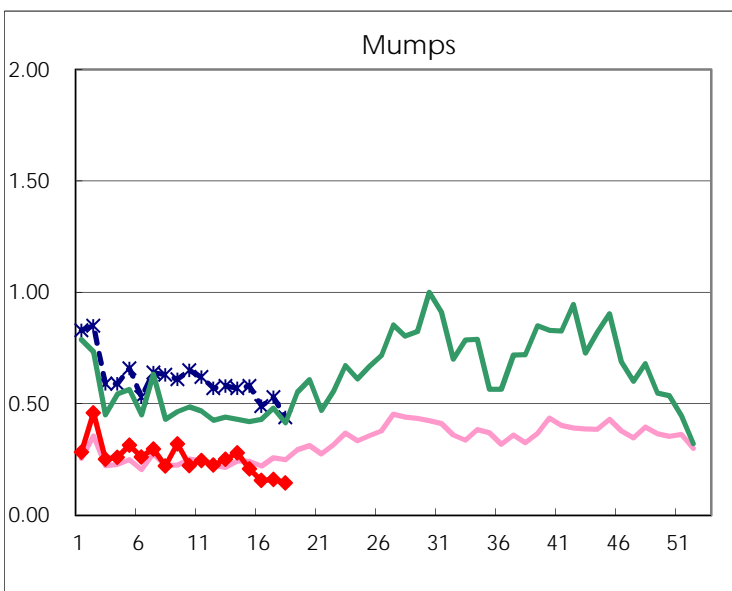
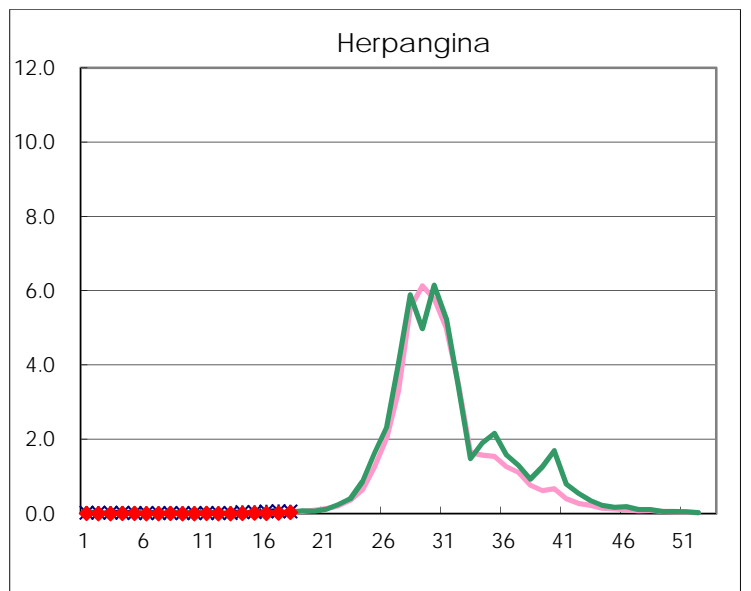
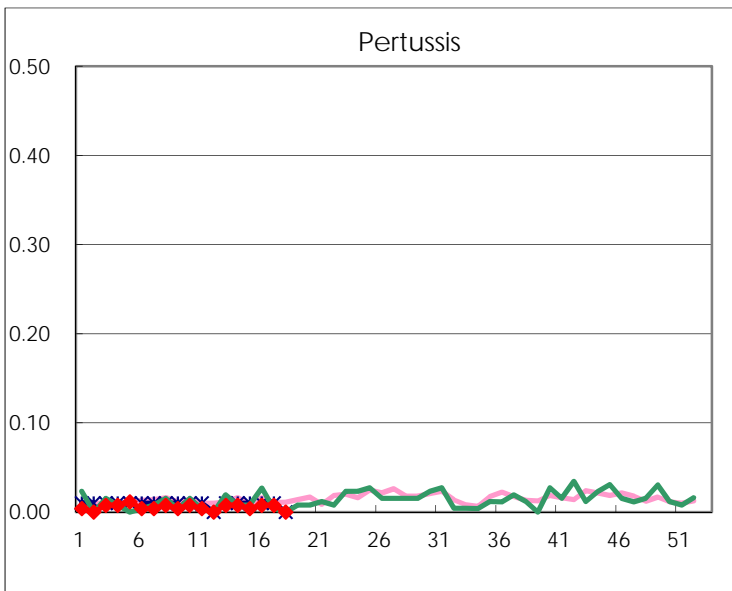
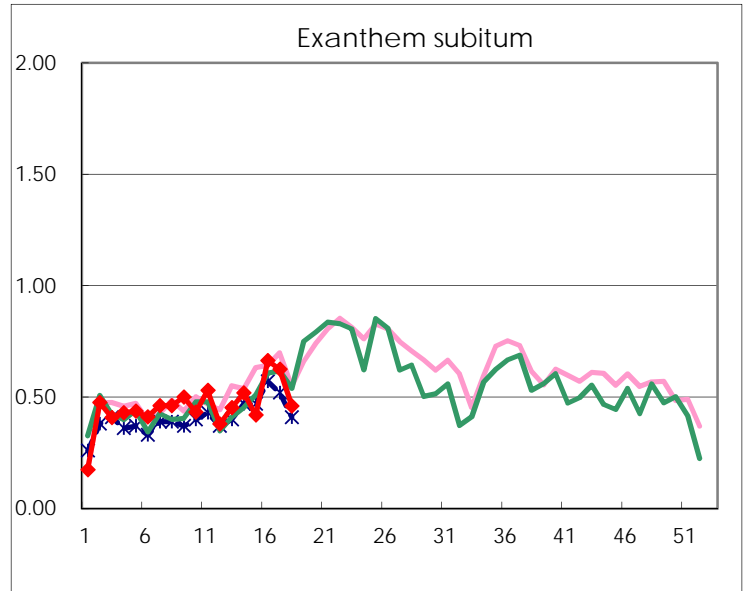
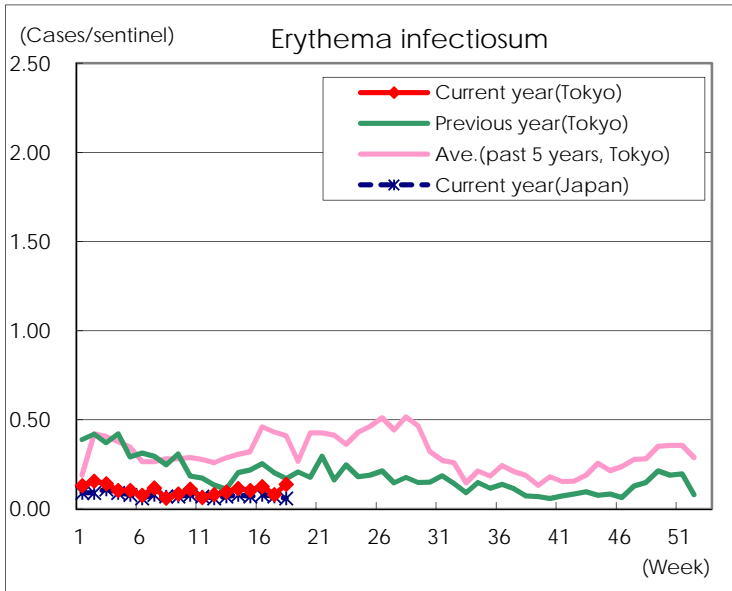
Number of patients with the diseases to be reported  
by the designated clinics and hospitals

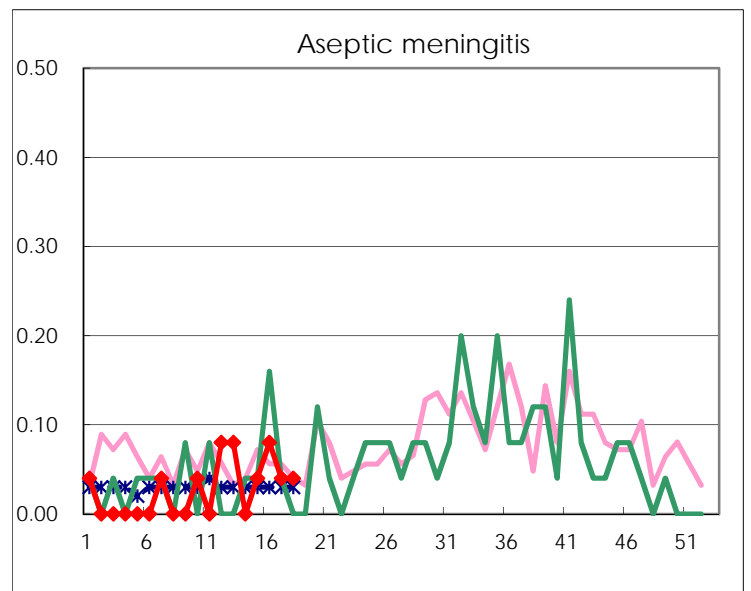
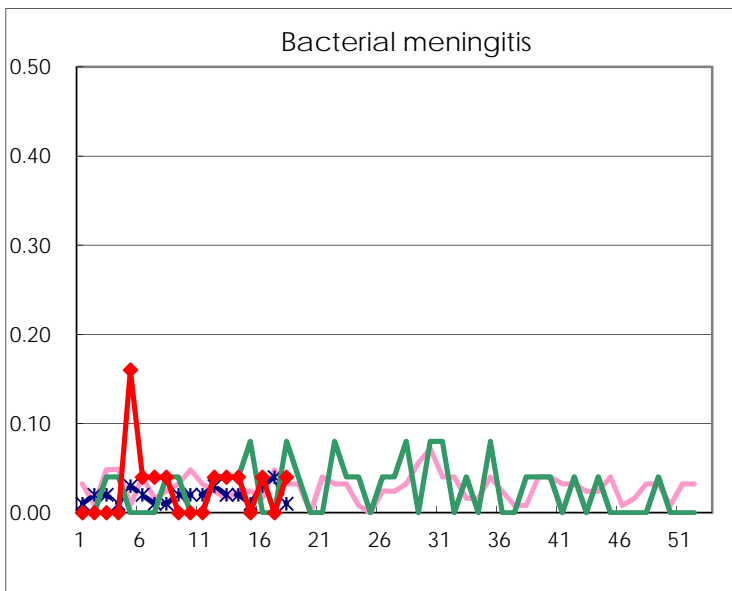
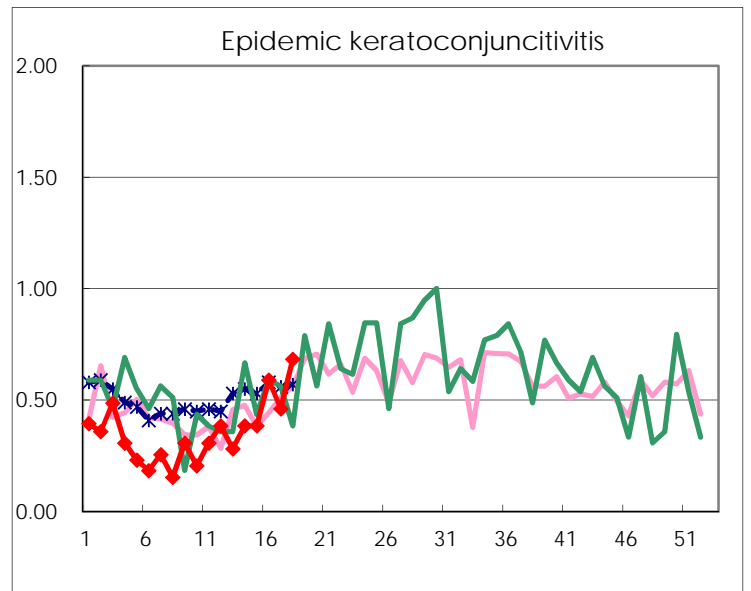
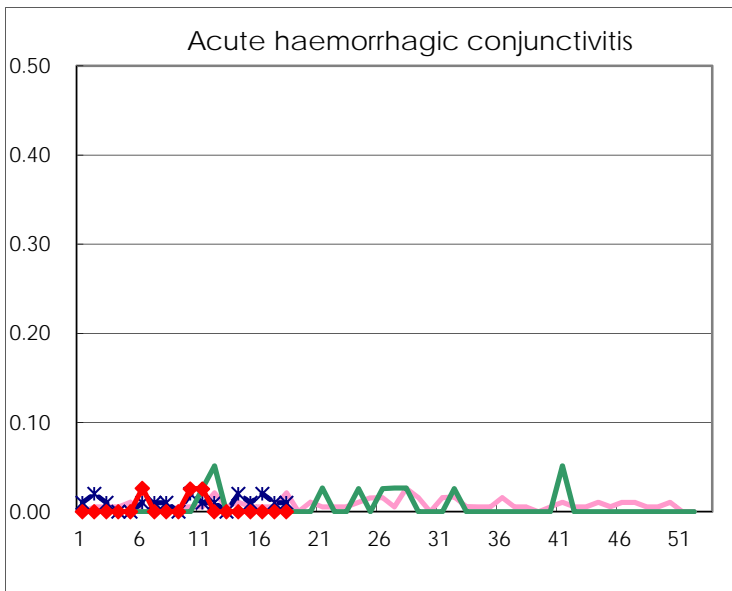
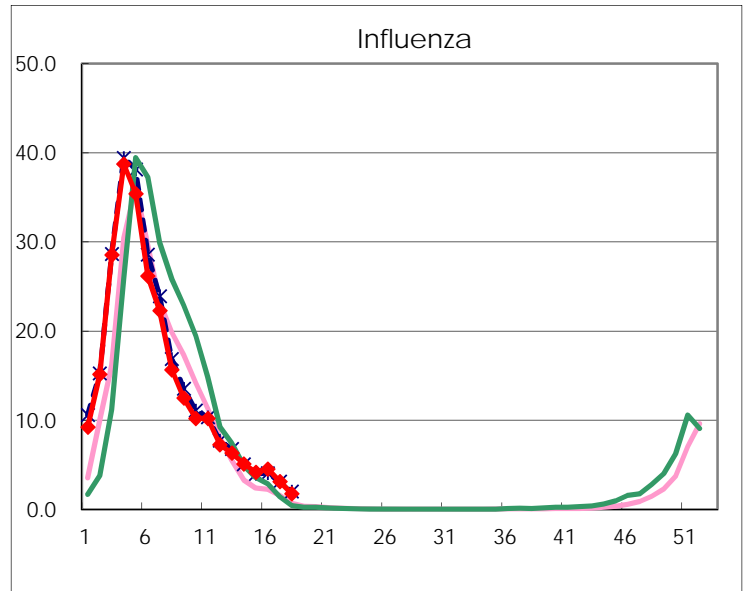
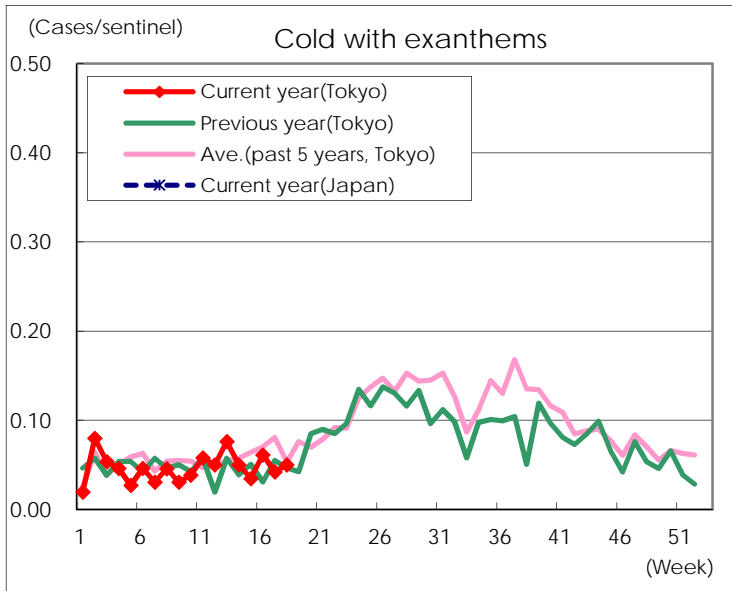
Diseases	Tokyo				
	15th	16th	17th	18th	/sentinel
Respiratory syncytial virus infection	62	72	70	53	0.20
Pharyngoconjunctival fever	56	82	102	87	0.33
Group A streptococcal pharyngitis	559	663	671	510	1.95
Infectious gastroenteritis	2,093	2,226	2,117	1,532	5.87
Chickenpox	89	84	109	82	0.31
Hand, foot, and mouth disease	32	33	42	48	0.18
Erythema infectiosum	27	33	21	36	0.14
Exanthem subitum	109	174	163	120	0.46
Pertussis	1	2	2		
Herpangina	5	3	5	10	0.04
Mumps	54	41	42	38	0.15
Kawasaki disease	2	4	3	1	
Cold with exanthems	9	16	11	13	0.05
Influenza	1,716	1,872	1,285	724	1.75
Acute hemorrhagic conjunctivitis					
Epidemic keratoconjunctivitis	15	23	18	26	0.68
Bacterial meningitis		1		1	0.04
Aseptic meningitis	1	2	1	1	0.04
Mycoplasma pneumonia	1	3	3	1	0.04
Chlamydial pneumonia (excluding psittacosis)	3	2			
Infectious gastroenteritis (only by Rotavirus)	10	16	6	7	0.28
Influenza-Associated Hospitalizations	6	9	6	7	0.28

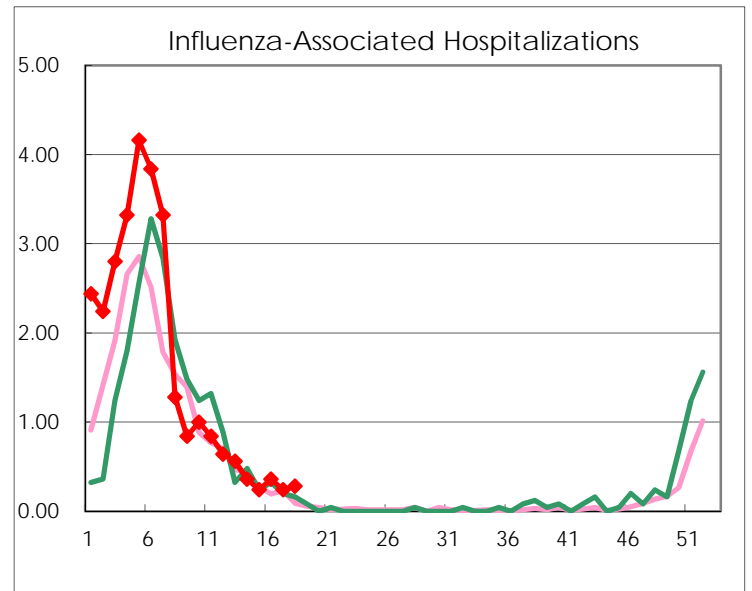
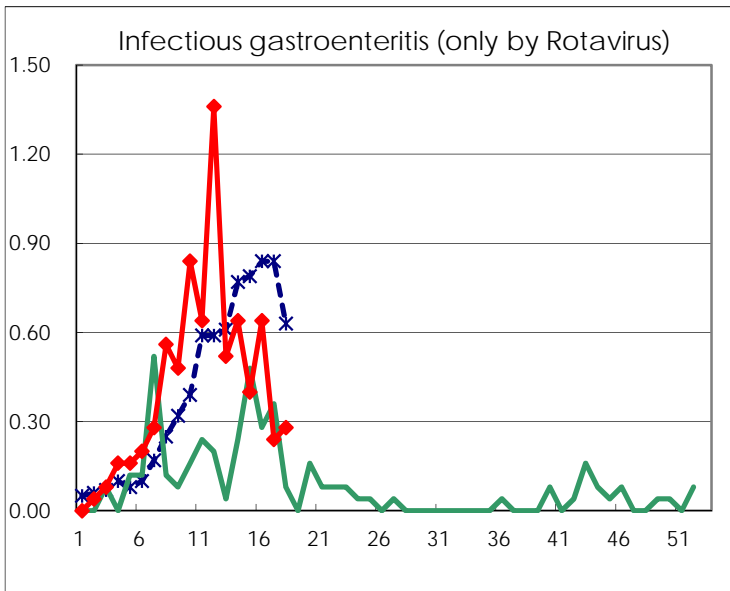
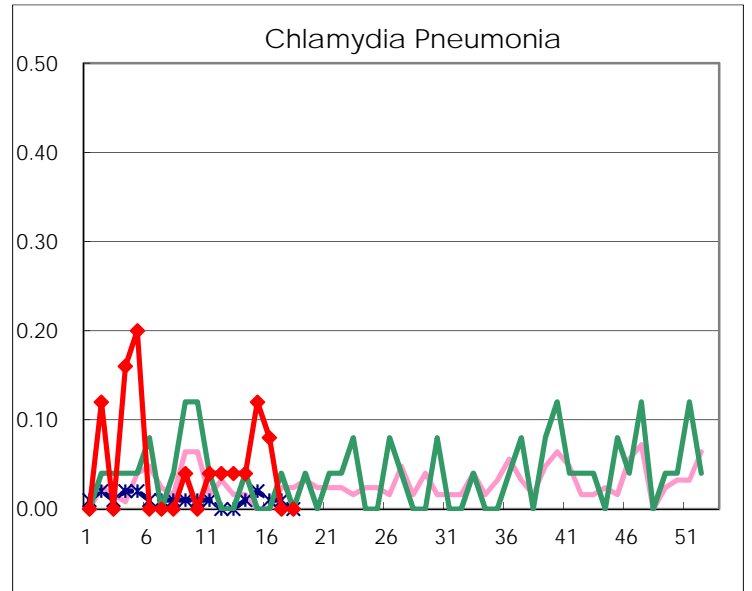
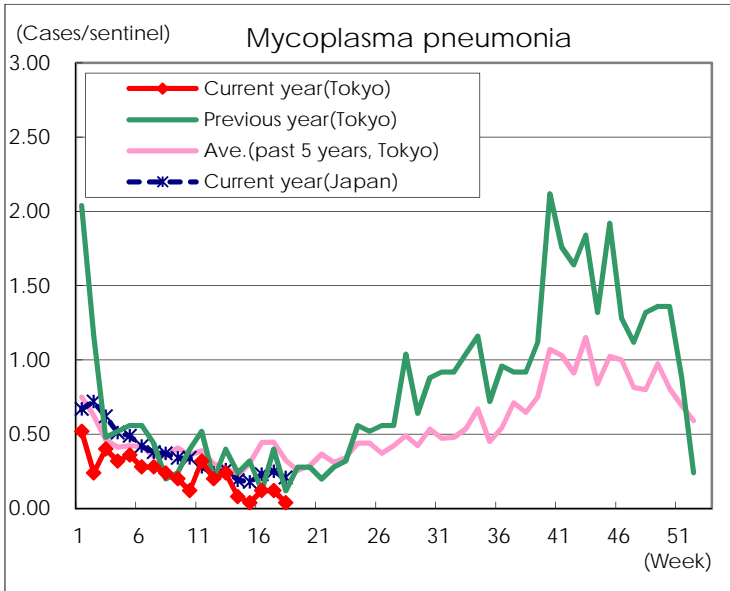
( Blank means 0. )

# Disease Trend Graph (weekly reported cases per sentinel in comparison)









Number of sentinel facilities for weekly reporting		
Types of sentinels	Number of sentinels	Sentinels having reported
Pediatric	264	261
Influenza	419	413
Ophthalmic	39	38
Specially-designated	25	25