

15 June 2017 / Number 23

Surveillance System in Tokyo, Japan

The infectious diseases which all physicians must report

All physicians must report to health centers the incidence of the diseases which are shown at page one. Health centers electronically report the individual cases to Tokyo Metropolitan Infectious Disease Surveillance Center.

The infectious diseases required to be reported by the sentinels

The numbers of patients who visit the sentinel clinics or hospitals during a week are reported to health centers in Tokyo. And they electronically report the numbers to Tokyo Metropolitan Infectious Disease Surveillance Center. We have about 500 sentinel clinics and hospitals in Tokyo.

Tokyo Metropolitan Institute of Public Health

TEL:81-3-3363-3213 FAX:81-3-5332-7365

e-mail:www@tokyo-eiken.go.jp

URL:idsc.tokyo-eiken.go.jp/

Number of patients with the diseases which all physicians must report

Category	Diseases	Tokyo					Japan		
		20th	21st	22nd	23rd	Cum 2017	23rd	Cum 2017	
I	Ebola hemorrhagic fever								
	Crimean-Congo hemorrhagic fever								
	Smallpox								
	South American hemorrhagic fever								
	Plague								
	Marburg disease								
	Lassa fever								
II	Acute poliomyelitis								
	Tuberculosis	85	58	64	68	1,460	419	9,566	
	Diphtheria								
	Severe Acute Respiratory Syndrome(SARS)								
	Middle East Respiratory Syndrome (MERS)								
	Avian influenza H5N1								
	Avian influenza H7N9								
III	Cholera	1				1		1	
	Shigellosis	2		1		18	1	63	
	Enterohemorrhagic Escherichia coli infection	3	5	2	2	48	50	530	
	Typhoid fever					2	1	15	
	Paratyphoid fever			1		3		7	
IV	Hepatitis E	1	1	1	1	30	3	161	
	West Nile fever								
	Hepatitis A	1	2	3		42	3	136	
	Echinococcosis							14	
	Yellow fever								
	Psittacosis							6	
	Omsk hemorrhagic fever								
	Relapsing fever								
	Kyasanur forest disease								
	Q fever								
	Rabies								
	Coccidioidomycosis								
	Monkeypox								
	Zika virus infection							1	
	Severe Fever with Thrombocytopenia Syndrome							5	30
	Hemorrhagic fever with renal syndrome								
	Western equine encephalitis								
	Tick-borne encephalitis								
	Anthrax								
	Chikungunya fever						1		1
	Scrub typhus(Tsutsugamushi disease)						2	6	84
	Dengue fever						18	3	78
	Eastern equine encephalitis								
	Avian influenza (excluding H5N1 and H7N9)								
	Nipah virus infection								
	Japanese spotted fever							10	64
	Japanese encephalitis								
	Hantavirus pulmonary syndrome								
	Herpes B virus infection								
	Glanders								
	Brucellosis								1
	Venezuelan equine encephalitis								
Hendra virus infection									
Epidemic typhus									
Botulism						1		1	
Malaria						5		13	
Tularemia									
Lyme disease								1	
Lyssavirus infection(excluding rabies)									
Rift valley fever									
Melioidosis									
Legionellosis	4	4	2	1	55	28	537		
Leptospirosis						1		2	
Rocky mountain spotted fever									

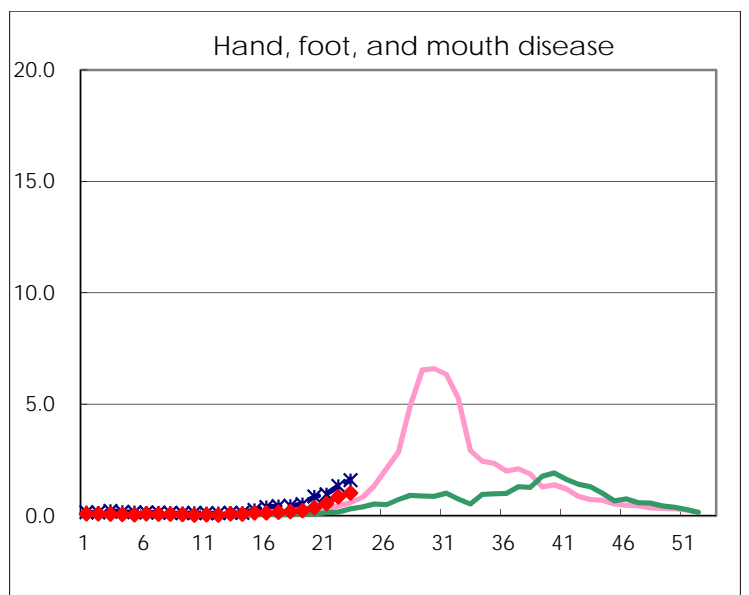
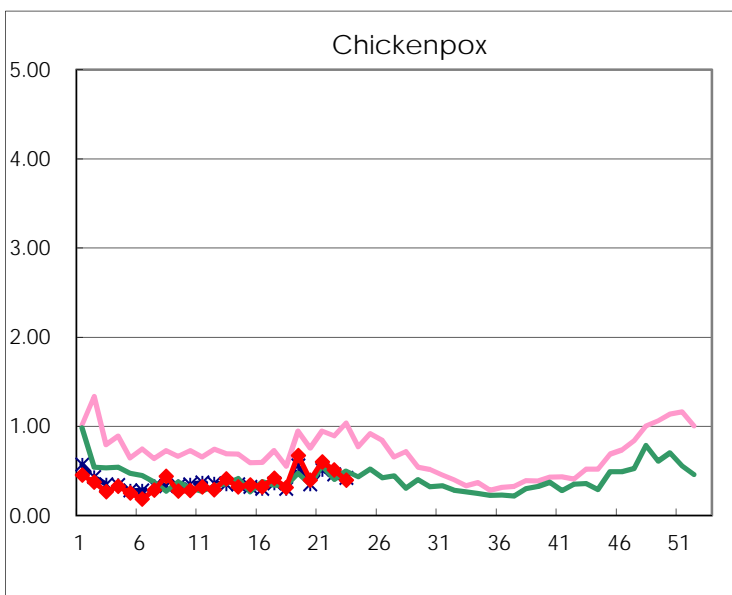
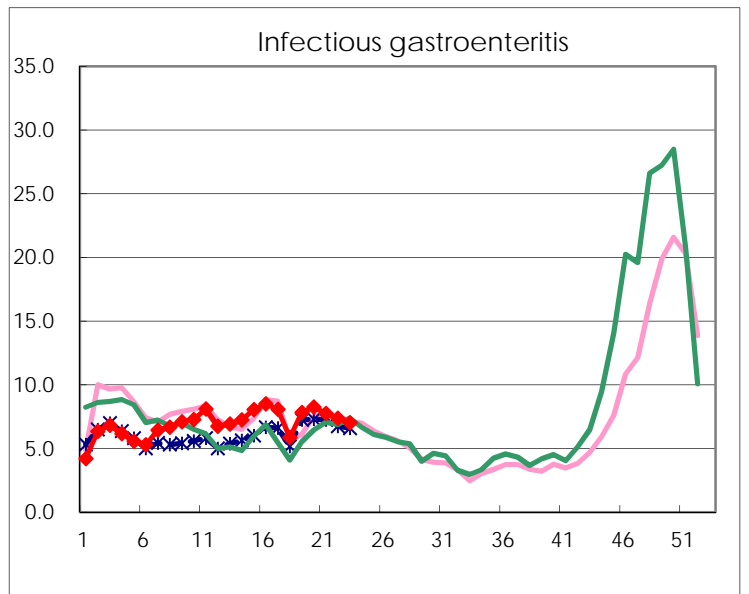
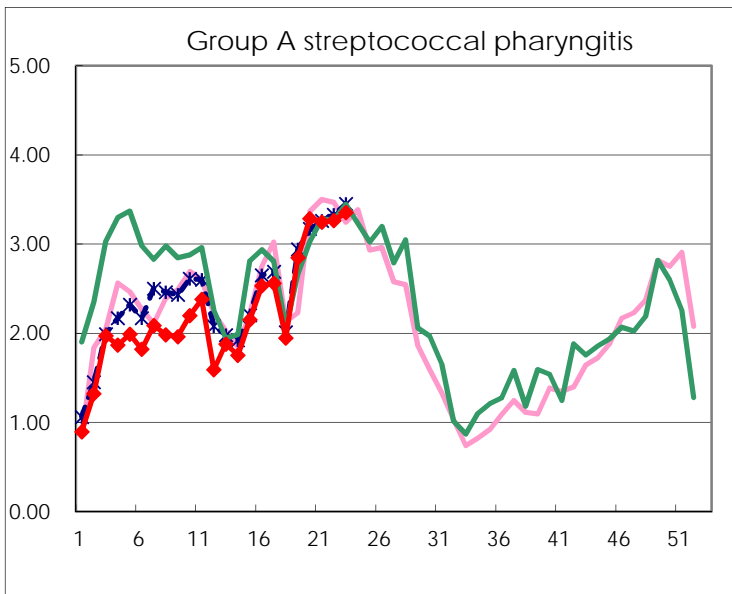
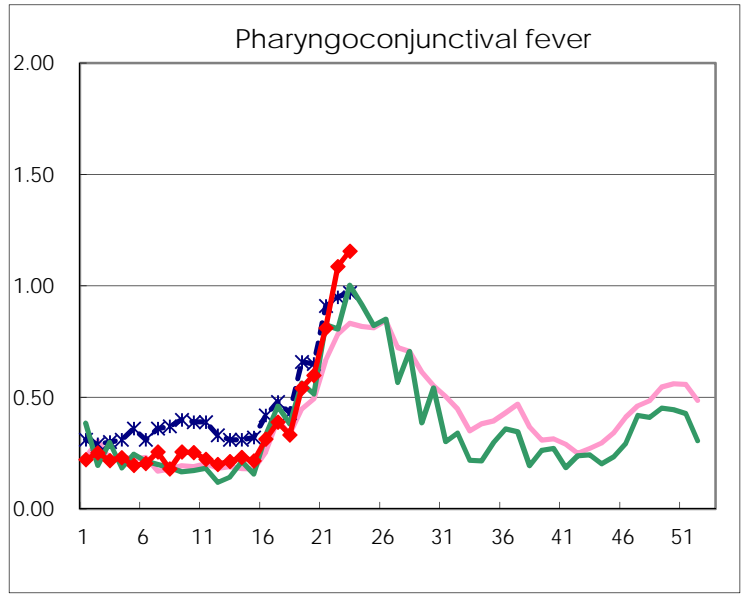
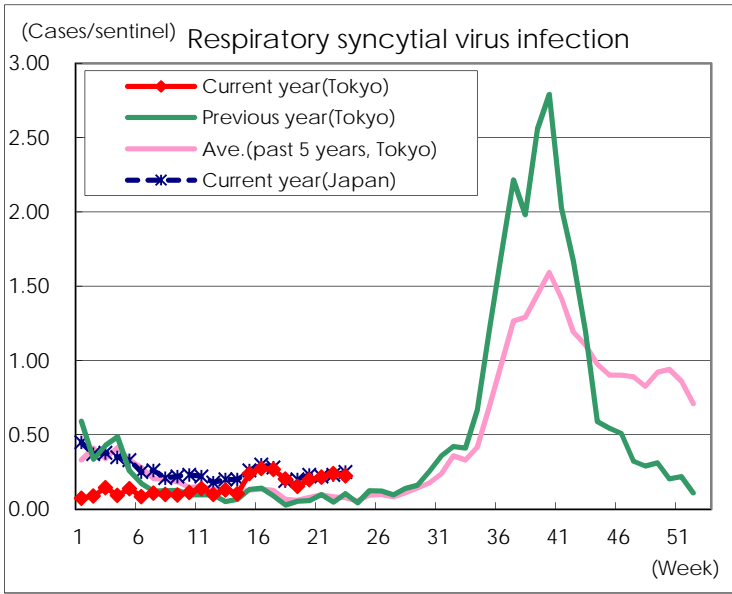
Category	Diseases	Tokyo					Japan	
		20th	21st	22nd	23rd	Cum 2017	23rd	Cum 2017
V	Amebiasis	3	3	5	3	90	16	475
	Viral hepatitis(excluding hepatitis A and E)		2	1	1	25	3	132
	CRE infection	6		4	3	82	18	628
	Acute encephalitis(excluding JE and WNE)	1		1		30	9	325
	Cryptosporidiosis							5
	Creutzfeldt-Jakob disease					7	1	76
	Severe invasive streptococcal infections(TSLS)	3	2	5	2	41	10	272
	Acquired immunodeficiency syndrome (AIDS)	8	12	7	8	198	21	589
	Giardiasis	3			1	14	2	31
	Invasive <i>Haemophilus influenzae</i> disease	2	3			23	6	180
	Invasive meningococcal disease					1		11
	Invasive pneumococcal disease	17	8	7	8	239	49	1,808
	Varicella (limited to hospitalized case)	1	1	2		21	3	129
	Congenital rubella syndrome							
	Syphilis	49	37	44	31	726	68	2,210
	Disseminated cryptococcosis	1		1		9	1	62
	Tetanus			1		2	3	32
	Vancomycin-resistant <i>S. aureus</i> infection							
	Vancomycin-resistant Enterococcus infection				1	5	2	35
	Rubella	1	1		1	9	1	43
Measles					17		164	
MDRA infection					1		11	

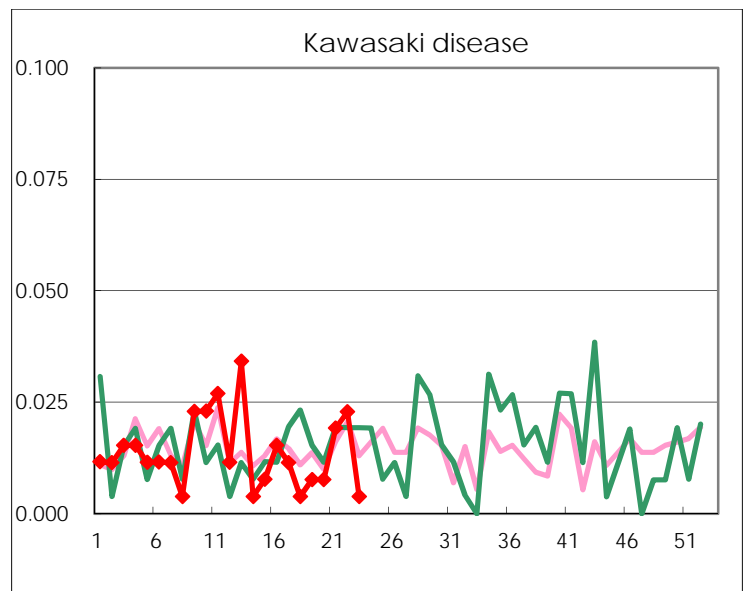
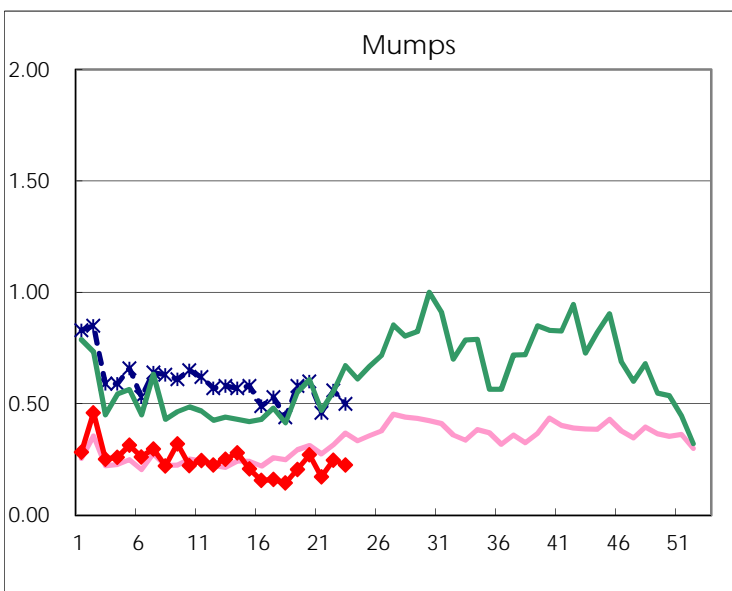
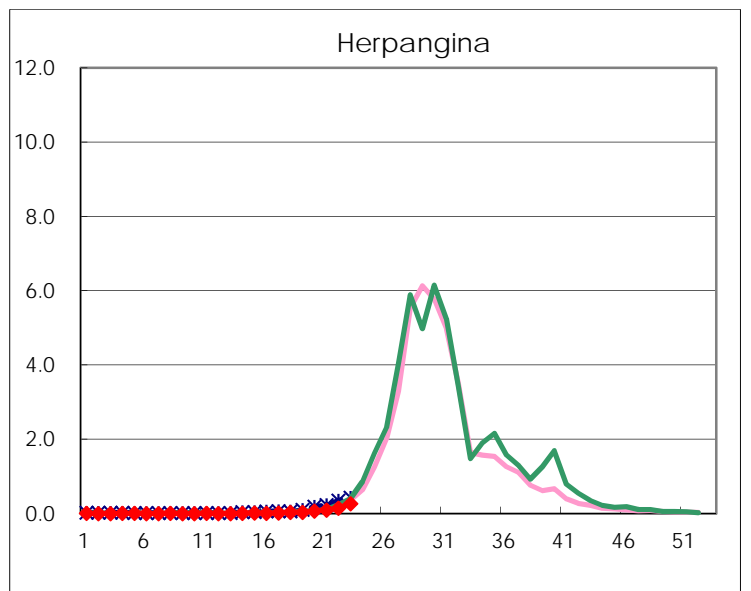
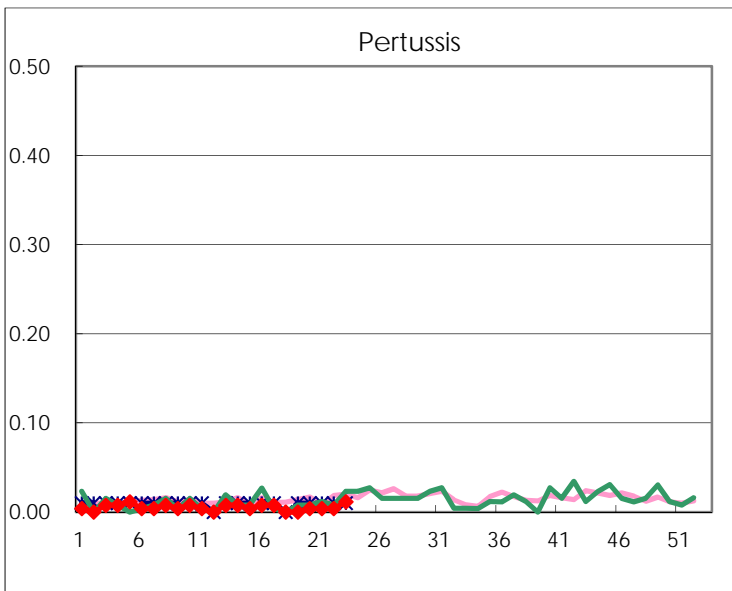
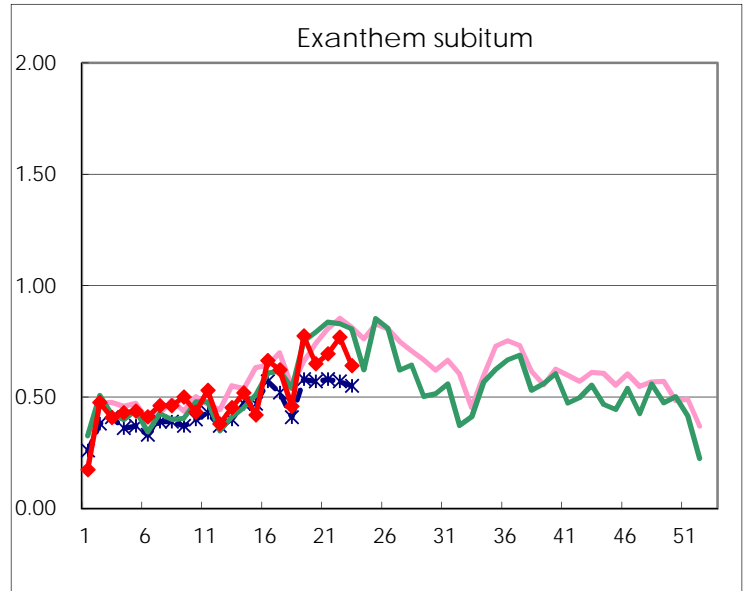
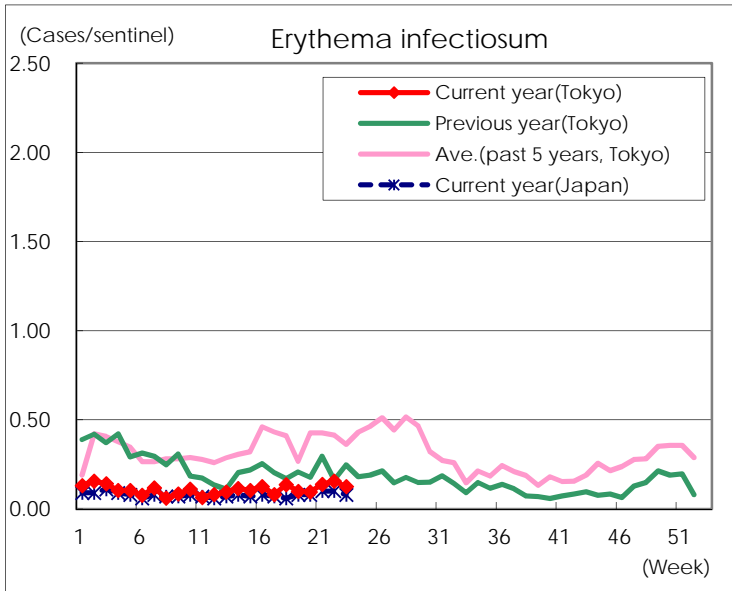
Number of patients with the diseases to be reported
by the designated clinics and hospitals

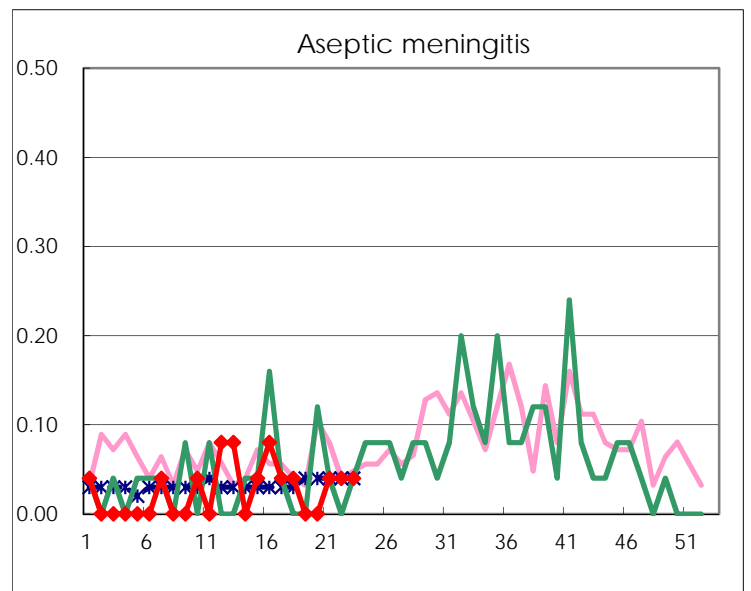
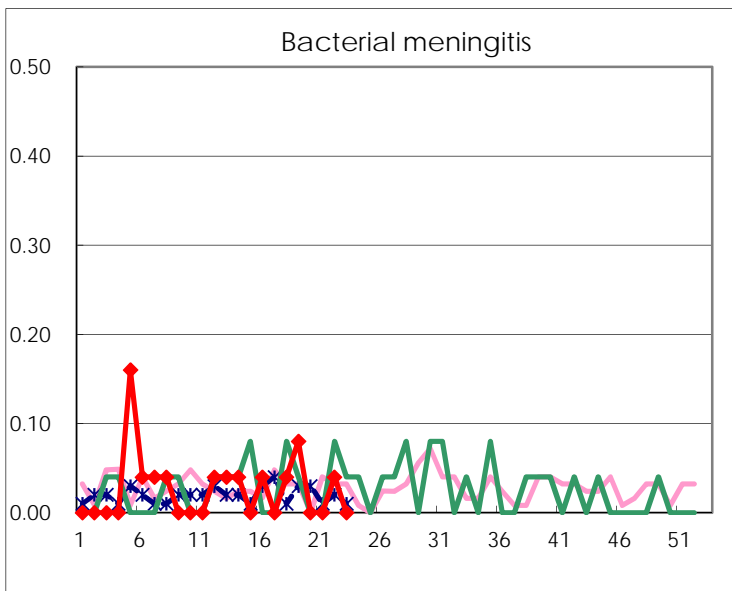
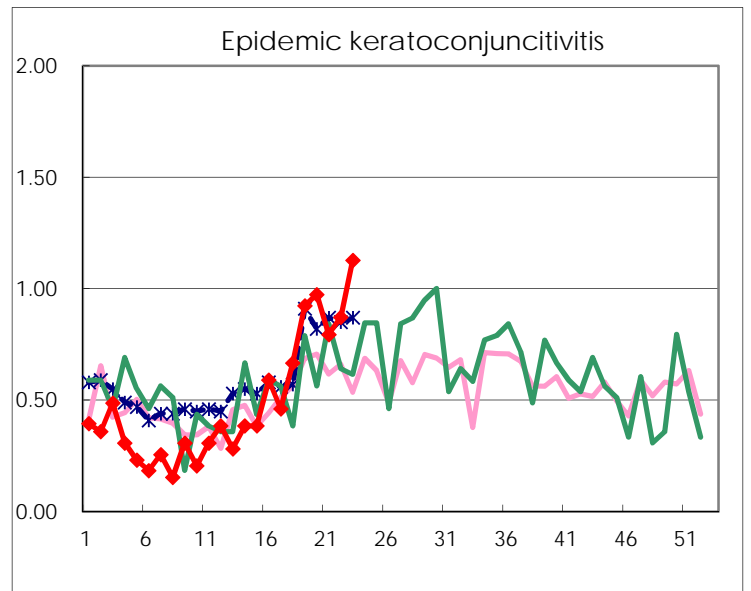
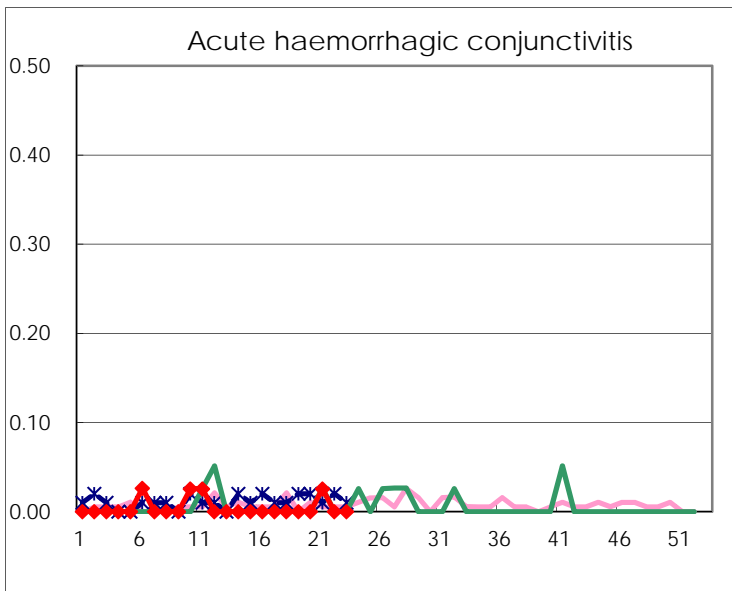
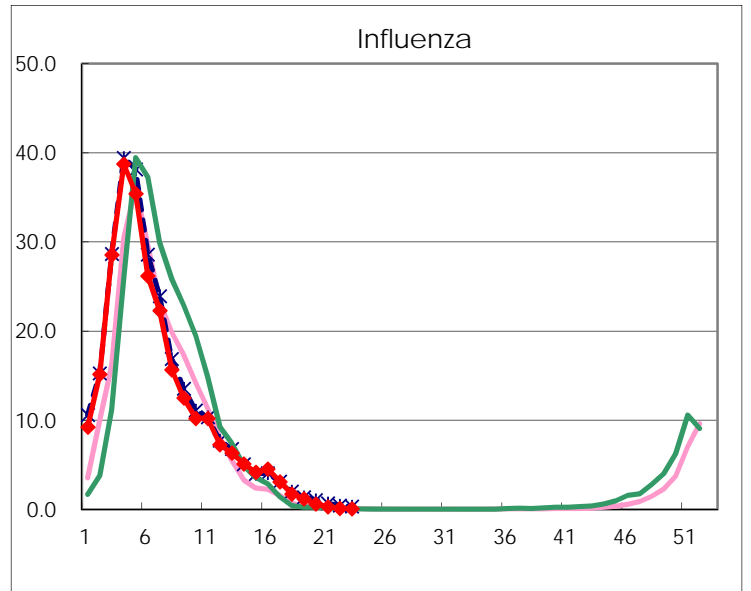
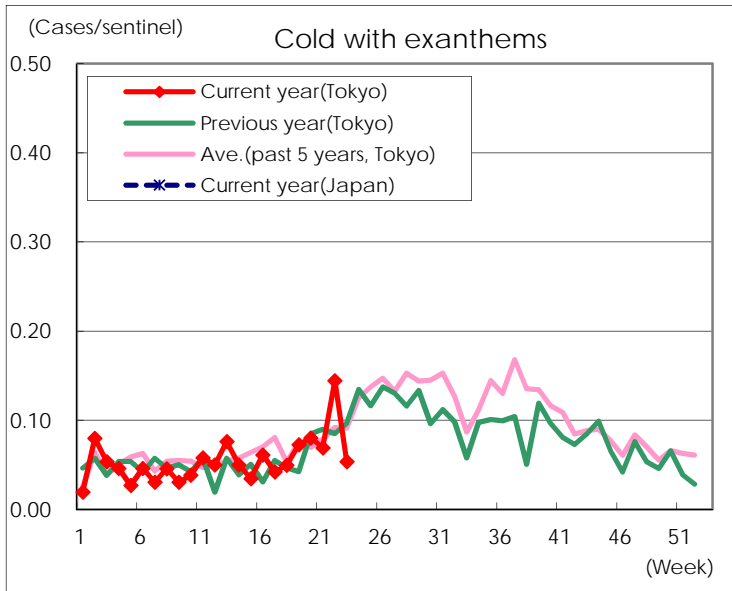
Diseases	Tokyo				
	20th	21st	22nd	23rd	/sentinel
Respiratory syncytial virus infection	52	56	63	59	0.23
Pharyngoconjunctival fever	157	212	286	303	1.16
Group A streptococcal pharyngitis	861	847	858	879	3.35
Infectious gastroenteritis	2,158	2,022	1,939	1,841	7.03
Chickenpox	104	157	134	104	0.40
Hand, foot, and mouth disease	96	143	222	267	1.02
Erythema infectiosum	25	36	41	33	0.13
Exanthem subitum	170	181	202	168	0.64
Pertussis	1	1	1	3	0.01
Herpangina	19	26	39	70	0.27
Mumps	71	45	65	59	0.23
Kawasaki disease	2	5	6	1	
Cold with exanthems	21	18	38	14	0.05
Influenza	251	123	48	26	0.06
Acute hemorrhagic conjunctivitis		1			
Epidemic keratoconjunctivitis	38	31	34	44	1.13
Bacterial meningitis			1		
Aseptic meningitis		1	1	1	0.04
Mycoplasma pneumonia	2	2	3		
Chlamydial pneumonia (excluding psittacosis)	1		1	2	0.08
Infectious gastroenteritis (only by Rotavirus)	6	7	3	5	0.20
Influenza-Associated Hospitalizations		1			

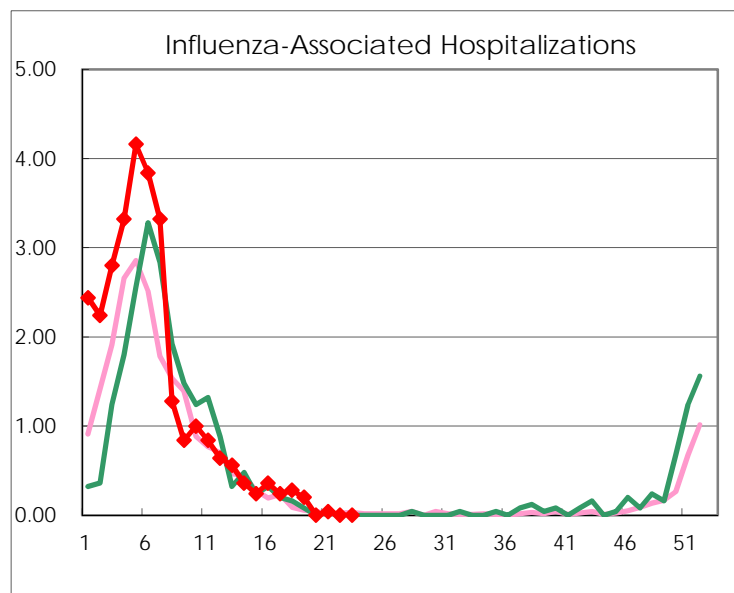
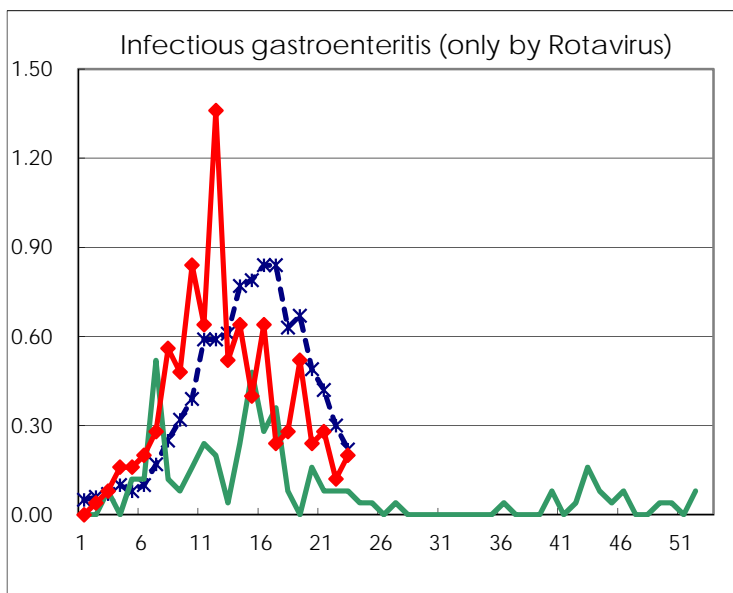
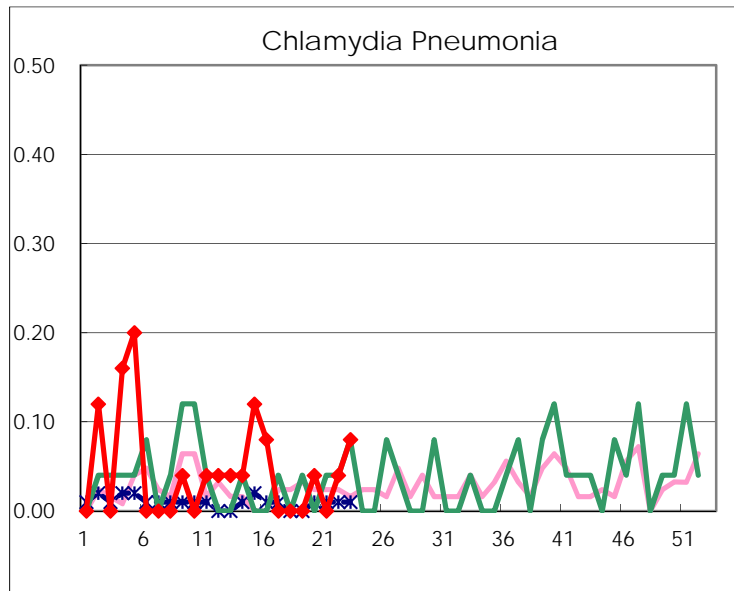
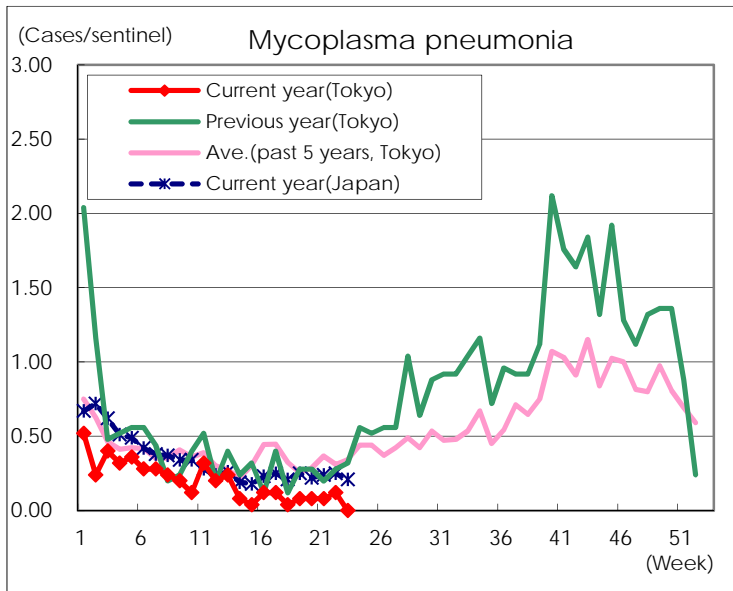
(Blank means 0.)

Disease Trend Graph (weekly reported cases per sentinel in comparison)









Number of sentinel facilities for weekly reporting		
Types of sentinels	Number of sentinels	Sentinels having reported
Pediatric	264	262
Influenza	419	411
Ophthalmic	39	39
Specially-designated	25	25