

13 July 2017 / Number 27

Surveillance System in Tokyo, Japan

The infectious diseases which all physicians must report

All physicians must report to health centers the incidence of the diseases which are shown at page one. Health centers electronically report the individual cases to Tokyo Metropolitan Infectious Disease Surveillance Center.

The infectious diseases required to be reported by the sentinels

The numbers of patients who visit the sentinel clinics or hospitals during a week are reported to health centers in Tokyo. And they electronically report the numbers to Tokyo Metropolitan Infectious Disease Surveillance Center. We have about 500 sentinel clinics and hospitals in Tokyo.

Tokyo Metropolitan Institute of Public Health

TEL:81-3-3363-3213 FAX:81-3-5332-7365

e-mail:www@tokyo-eiken.go.jp

URL:idsc.tokyo-eiken.go.jp/

Number of patients with the diseases which all physicians must report

Category	Diseases	Tokyo					Japan	
		24th	25th	26th	27th	Cum 2017	27th	Cum 2017
I	Ebola hemorrhagic fever							
	Crimean-Congo hemorrhagic fever							
	Smallpox							
	South American hemorrhagic fever							
	Plague							
	Marburg disease							
	Lassa fever							
II	Acute poliomyelitis							
	Tuberculosis	63	74	61	51	1,726	320	11,439
	Diphtheria							
	Severe Acute Respiratory Syndrome(SARS)							
	Middle East Respiratory Syndrome (MERS)							
	Avian influenza H5N1							
	Avian influenza H7N9							
III	Cholera					1	1	3
	Shigellosis	1				19	2	75
	Enterohemorrhagic Escherichia coli infection	5	5	4	7	70	71	843
	Typhoid fever		1	2	1	6	1	21
	Paratyphoid fever				1	4	1	8
IV	Hepatitis E	2	3	1		36	2	181
	West Nile fever							
	Hepatitis A	2	2		2	48	3	162
	Echinococcosis						1	17
	Yellow fever							
	Psittacosis							11
	Omsk hemorrhagic fever							
	Relapsing fever				1	1	1	2
	Kyasanur forest disease							
	Q fever							
	Rabies							
	Coccidioidomycosis							
	Monkeypox							
	Zika virus infection							1
	Severe Fever with Thrombocytopenia Syndrome						4	44
	Hemorrhagic fever with renal syndrome							
	Western equine encephalitis							
	Tick-borne encephalitis							
	Anthrax							
	Chikungunya fever				1	2	1	2
	Scrub typhus(Tsutsugamushi disease)					2	1	98
	Dengue fever	1	2	5	1	27	4	94
	Eastern equine encephalitis							
	Avian influenza (excluding H5N1 and H7N9)							
	Nipah virus infection							
	Japanese spotted fever						7	107
	Japanese encephalitis							
	Hantavirus pulmonary syndrome							
	Herpes B virus infection							
	Glanders							
	Brucellosis							1
	Venezuelan equine encephalitis							
Hendra virus infection								
Epidemic typhus								
Botulism					1	1	2	
Malaria	1		1		7		20	
Tularemia								
Lyme disease						2	6	
Lyssavirus infection(excluding rabies)								
Rift valley fever								
Melioidosis		1			1		1	
Legionellosis		1	3	4	63	41	687	
Leptospirosis					1		4	
Rocky mountain spotted fever								

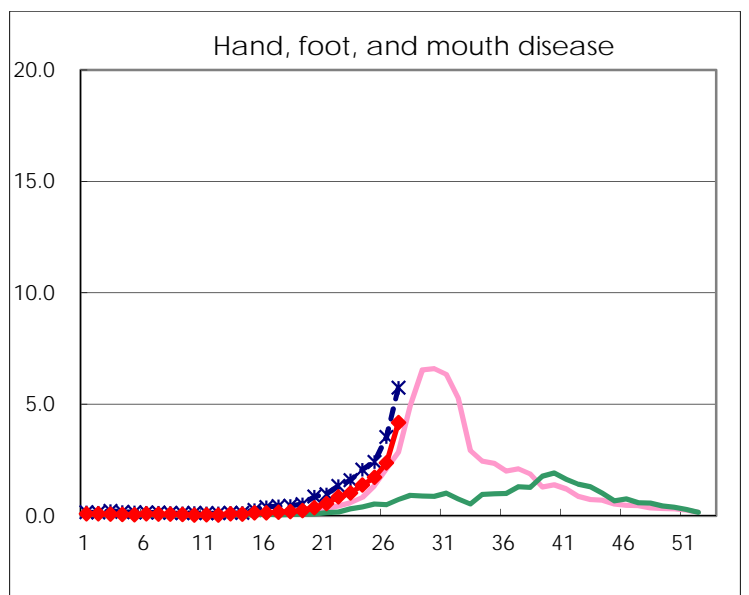
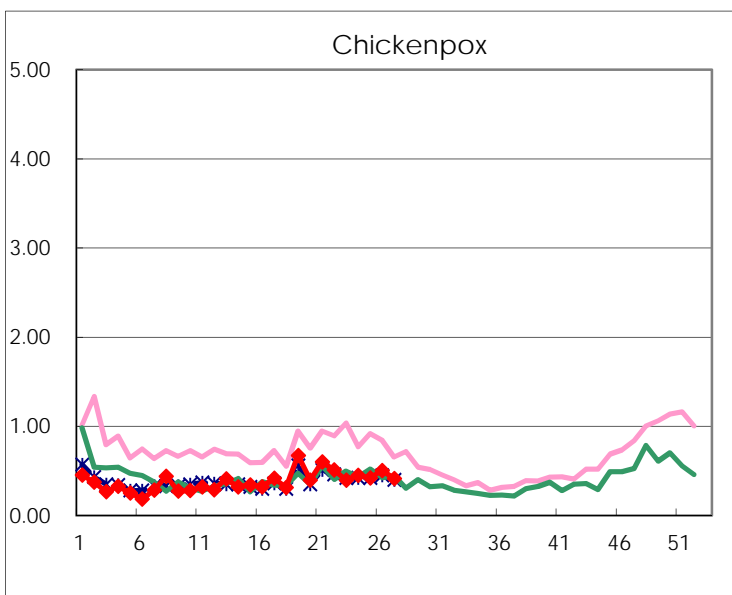
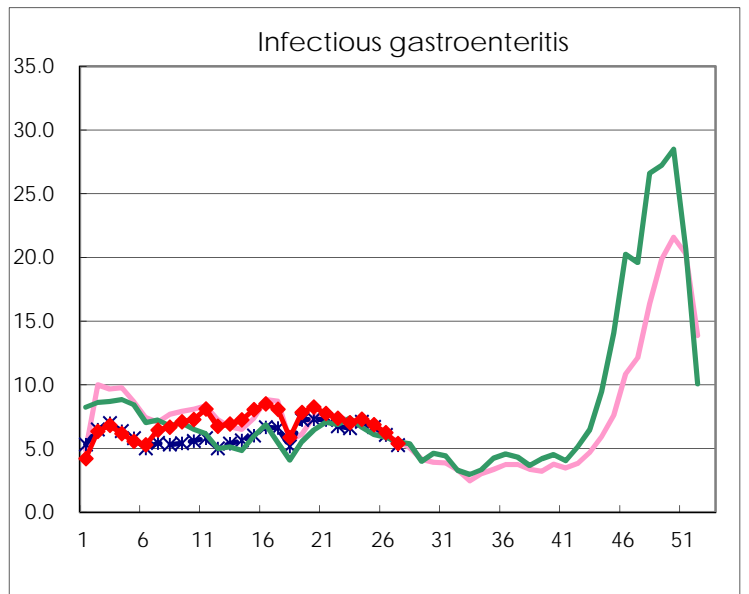
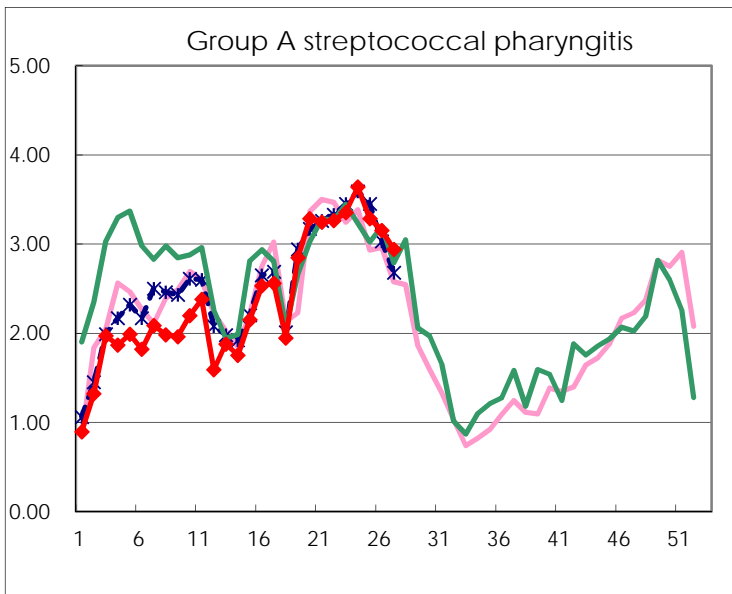
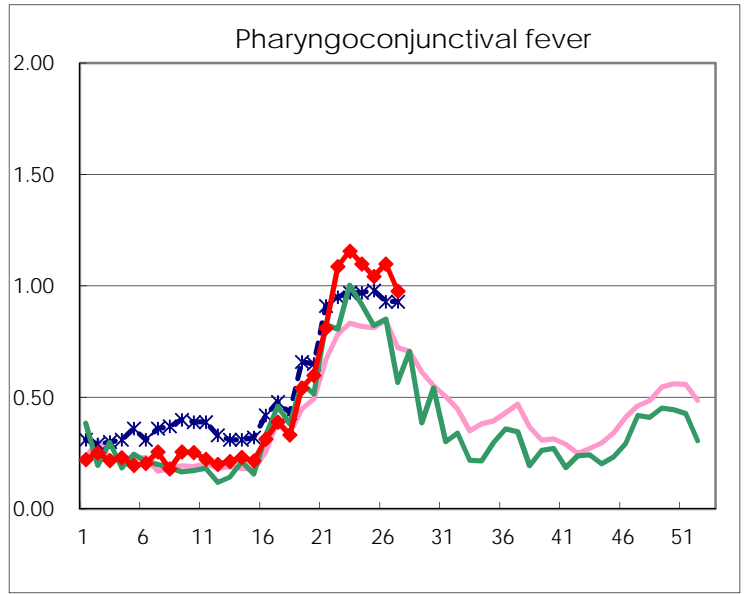
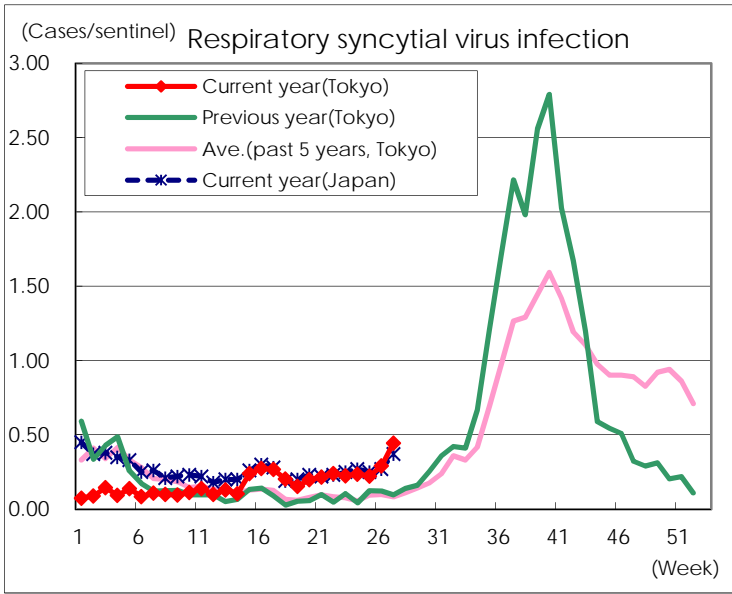
Category	Diseases	Tokyo					Japan	
		24th	25th	26th	27th	Cum 2017	27th	Cum 2017
V	Amebiasis	9	6	5	4	114	12	564
	Viral hepatitis(excluding hepatitis A and E)	1	2	2	1	31	3	152
	CRE infection	8	2	3	2	97	27	766
	Acute encephalitis(excluding JE and WNE)		2	2	3	37	10	378
	Cryptosporidiosis							7
	Creutzfeldt-Jakob disease			1		8	2	96
	Severe invasive streptococcal infections(TSLS)	2	1		3	47	4	315
	Acquired immunodeficiency syndrome (AIDS)	5	10	10	7	230	17	706
	Giardiasis		1			15		36
	Invasive <i>Haemophilus influenzae</i> disease	1	2		1	27	5	200
	Invasive meningococcal disease		1			2	1	13
	Invasive pneumococcal disease	11	6	9	2	267	20	2,013
	Varicella (limited to hospitalized case)	1	1	3	2	28	6	160
	Congenital rubella syndrome							
	Syphilis	34	34	49	39	886	81	2,757
	Disseminated cryptococcosis	1				10	1	74
	Tetanus					2	3	46
	Vancomycin-resistant <i>S. aureus</i> infection							
	Vancomycin-resistant Enterococcus infection				1	6	3	49
	Rubella	2			1	12	2	51
Measles					17	2	165	
MDRA infection					1		12	

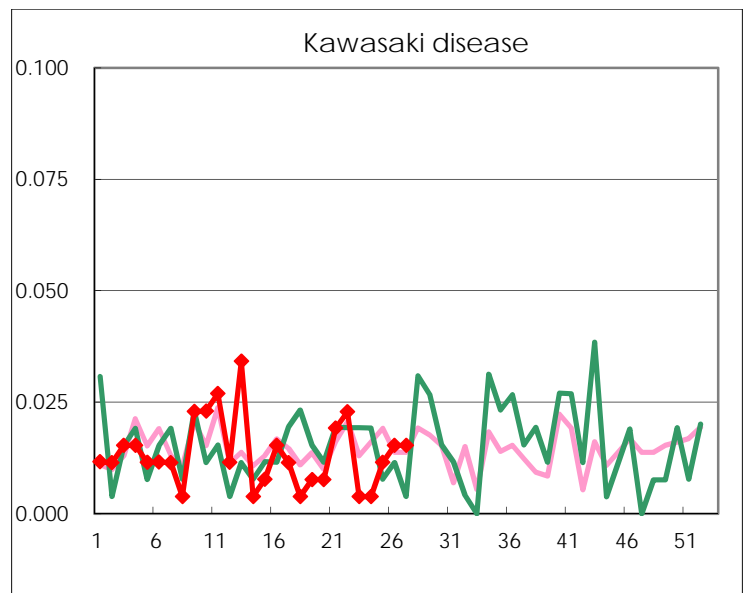
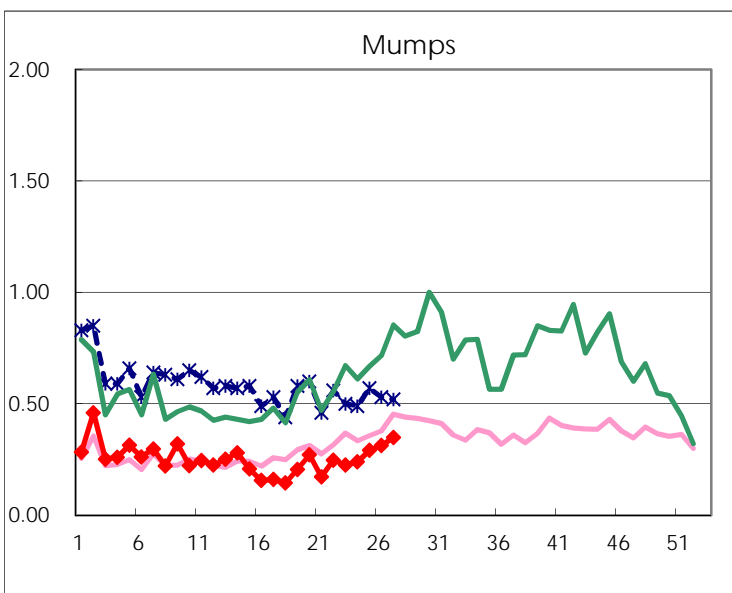
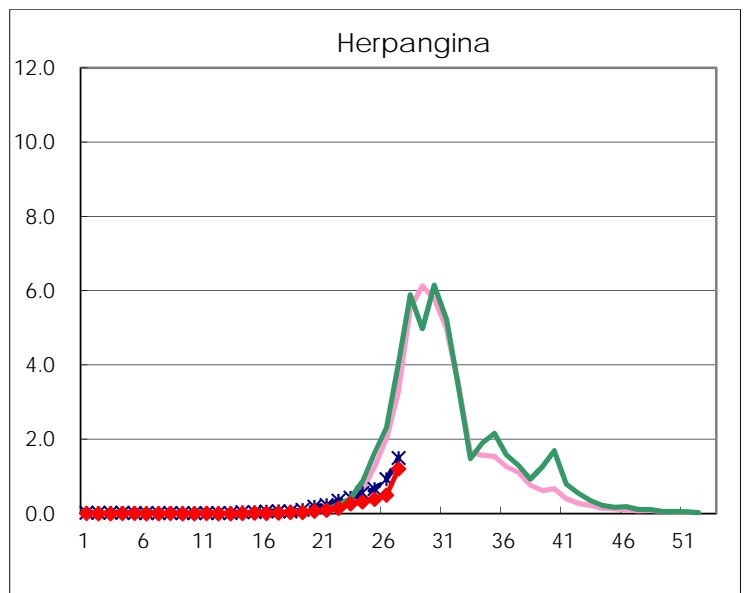
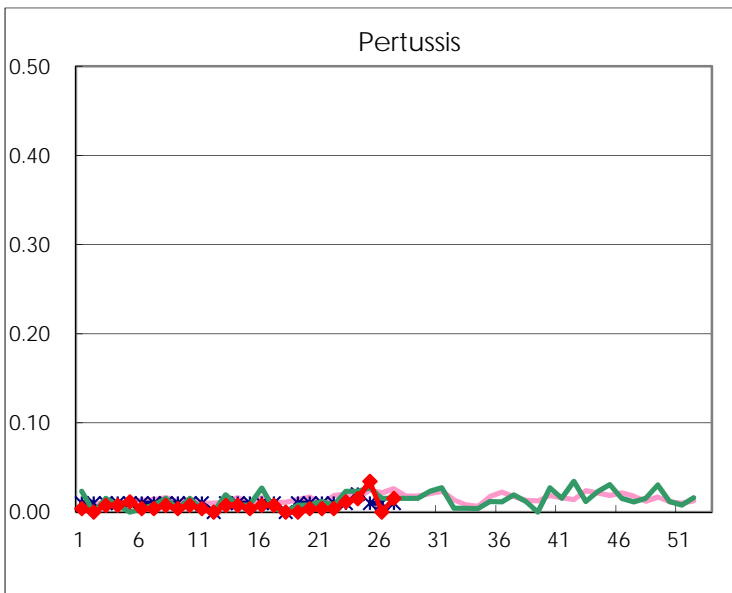
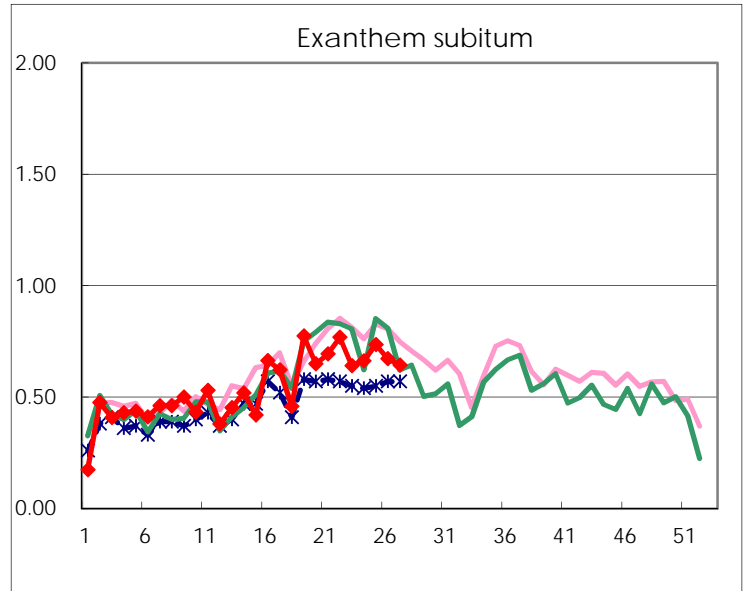
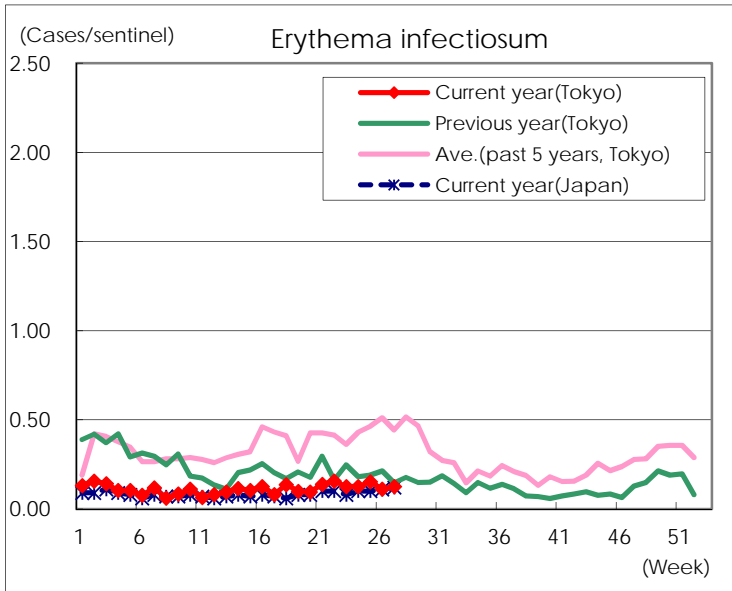
Number of patients with the diseases to be reported
by the designated clinics and hospitals

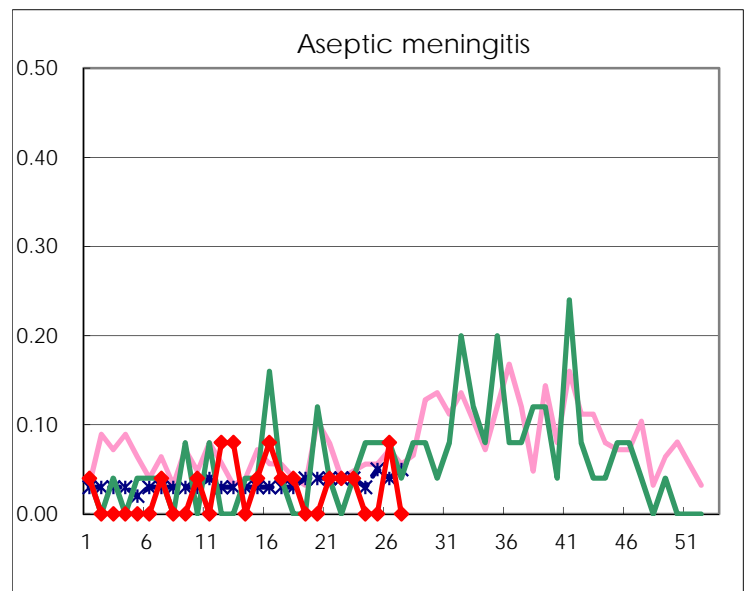
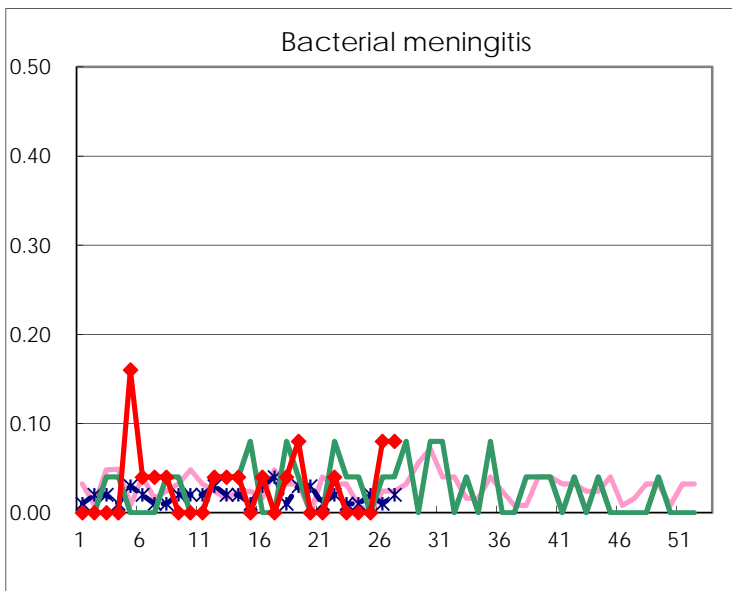
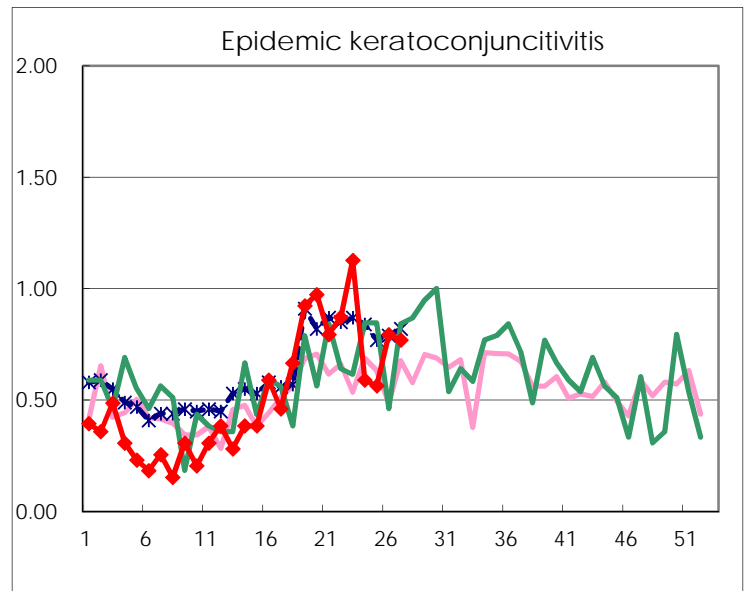
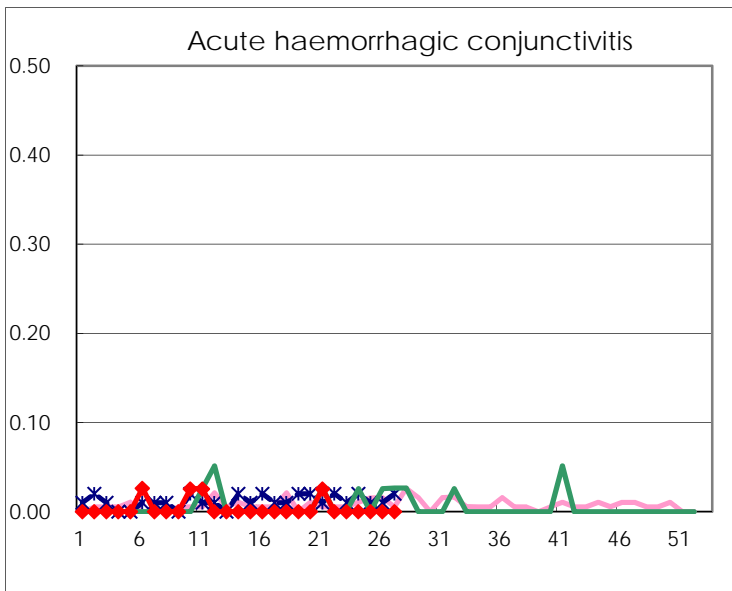
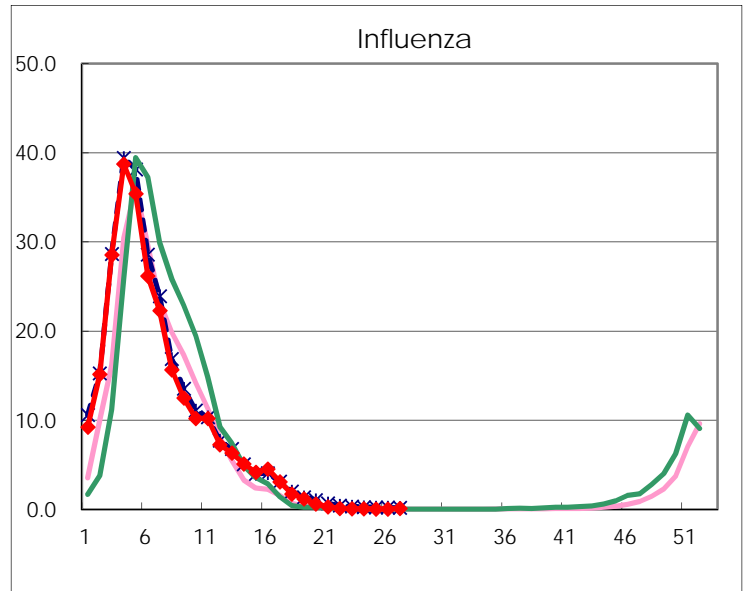
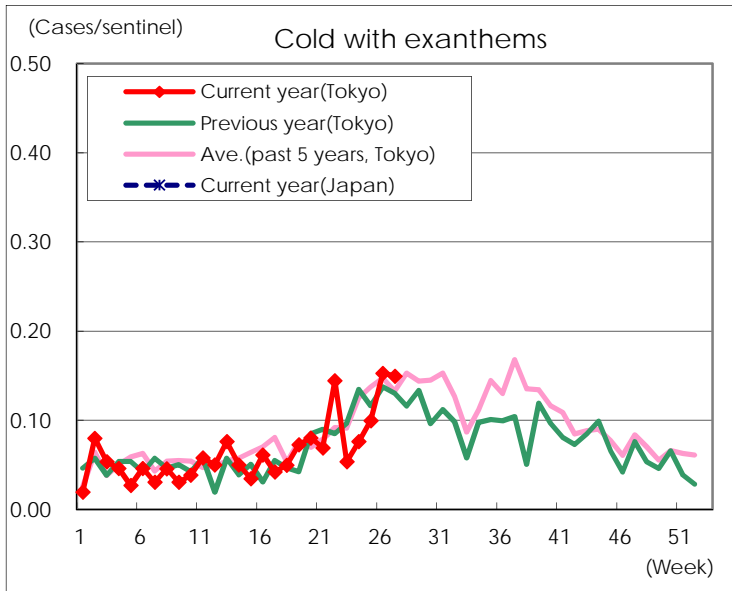
Diseases	Tokyo				
	24th	25th	26th	27th	/sentinel
Respiratory syncytial virus infection	62	58	76	116	0.44
Pharyngoconjunctival fever	289	272	288	255	0.98
Group A streptococcal pharyngitis	958	858	826	768	2.94
Infectious gastroenteritis	1,920	1,794	1,633	1,404	5.38
Chickenpox	118	110	132	108	0.41
Hand, foot, and mouth disease	362	449	620	1,090	4.18
Erythema infectiosum	33	40	29	33	0.13
Exanthem subitum	174	192	176	168	0.64
Pertussis	4	9		4	0.02
Herpangina	83	102	131	314	1.20
Mumps	63	76	82	91	0.35
Kawasaki disease	1	3	4	4	0.02
Cold with exanthems	20	26	40	39	0.15
Influenza	27	17	17	45	0.11
Acute hemorrhagic conjunctivitis					
Epidemic keratoconjunctivitis	23	22	31	30	0.77
Bacterial meningitis			2	2	0.08
Aseptic meningitis			2		
Mycoplasma pneumonia	4	5	1	6	0.24
Chlamydial pneumonia (excluding psittacosis)	1	1	2	1	0.04
Infectious gastroenteritis (only by Rotavirus)	5	1			
Influenza-Associated Hospitalizations					

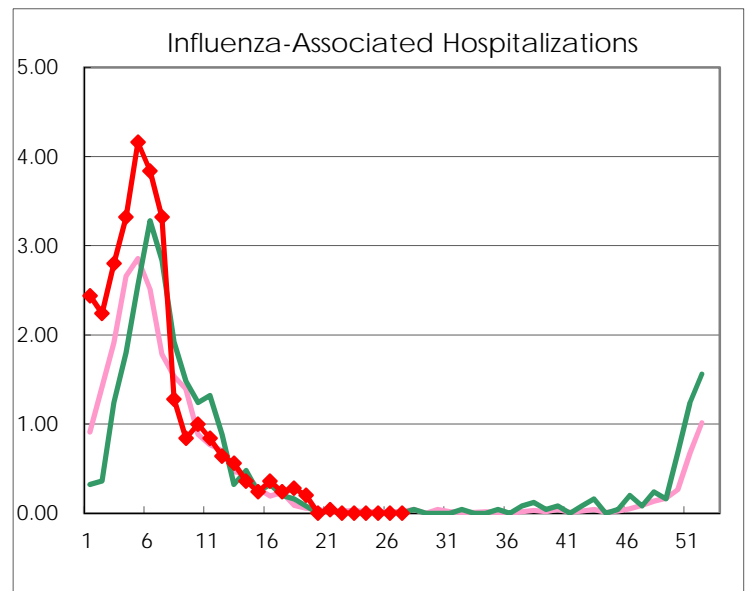
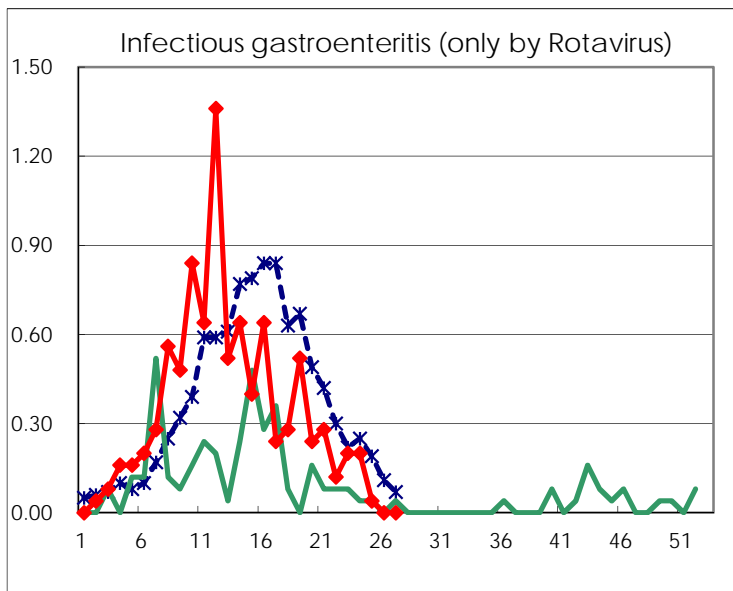
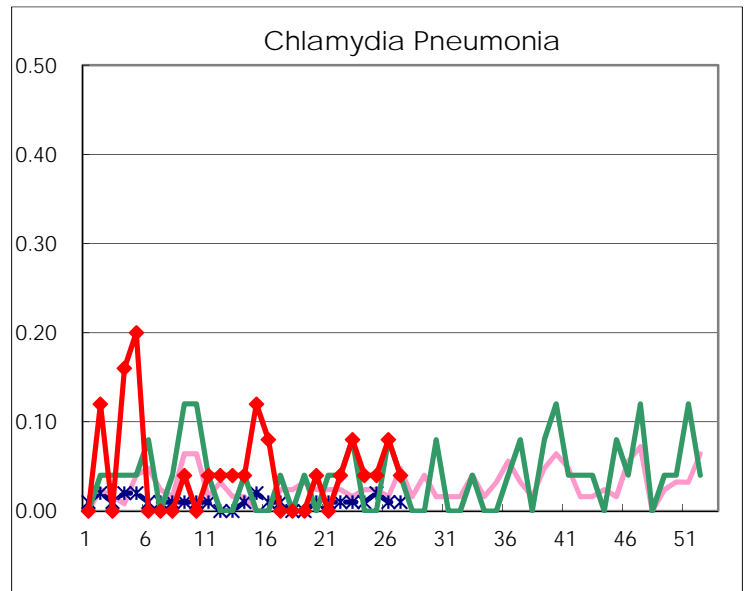
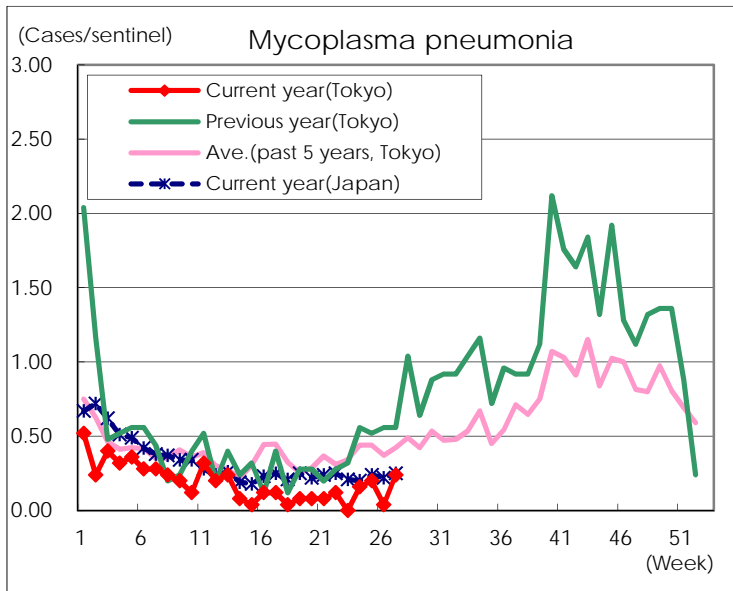
(Blank means 0.)

Disease Trend Graph (weekly reported cases per sentinel in comparison)









Number of sentinel facilities for weekly reporting		
Types of sentinels	Number of sentinels	Sentinels having reported
Pediatric	264	261
Influenza	419	411
Ophthalmic	39	39
Specially-designated	25	25