

20 July 2017 / Number 28

Surveillance System in Tokyo, Japan

The infectious diseases which all physicians must report

All physicians must report to health centers the incidence of the diseases which are shown at page one. Health centers electronically report the individual cases to Tokyo Metropolitan Infectious Disease Surveillance Center.

The infectious diseases required to be reported by the sentinels

The numbers of patients who visit the sentinel clinics or hospitals during a week are reported to health centers in Tokyo. And they electronically report the numbers to Tokyo Metropolitan Infectious Disease Surveillance Center. We have about 500 sentinel clinics and hospitals in Tokyo.

Tokyo Metropolitan Institute of Public Health

TEL:81-3-3363-3213 FAX:81-3-5332-7365

e-mail:www@tokyo-eiken.go.jp

URL:idsc.tokyo-eiken.go.jp/

Number of patients with the diseases which all physicians must report

Category	Diseases	Tokyo					Japan	
		25th	26th	27th	28th	Cum 2017	28th	Cum 2017
I	Ebola hemorrhagic fever							
	Crimean-Congo hemorrhagic fever							
	Smallpox							
	South American hemorrhagic fever							
	Plague							
	Marburg disease							
	Lassa fever							
II	Acute poliomyelitis							
	Tuberculosis	77	70	54	62	1,804	353	11,887
	Diphtheria							
	Severe Acute Respiratory Syndrome(SARS)							
	Middle East Respiratory Syndrome (MERS)							
	Avian influenza H5N1							
	Avian influenza H7N9							
III	Cholera					1		3
	Shigellosis					19	5	80
	Enterohemorrhagic Escherichia coli infection	5	4	7	7	77	82	931
	Typhoid fever	1	2	1		6		22
	Paratyphoid fever			1		4		8
IV	Hepatitis E	3	1		1	37	2	186
	West Nile fever							
	Hepatitis A	2	1	2		49	4	167
	Echinococcosis				1	1	1	18
	Yellow fever							
	Psittacosis							11
	Omsk hemorrhagic fever							
	Relapsing fever			1		1		2
	Kyasanur forest disease							
	Q fever							
	Rabies							
	Coccidioidomycosis							
	Monkeypox							
	Zika virus infection						1	2
	Severe Fever with Thrombocytopenia Syndrome						6	50
	Hemorrhagic fever with renal syndrome							
	Western equine encephalitis							
	Tick-borne encephalitis						1	1
	Anthrax							
	Chikungunya fever			1		2		2
	Scrub typhus(Tsutsugamushi disease)					2		98
	Dengue fever	2	5	1	1	28	5	99
	Eastern equine encephalitis							
	Avian influenza (excluding H5N1 and H7N9)							
	Nipah virus infection							
	Japanese spotted fever						6	113
	Japanese encephalitis							
	Hantavirus pulmonary syndrome							
	Herpes B virus infection							
	Glanders							
	Brucellosis							1
	Venezuelan equine encephalitis							
Hendra virus infection								
Epidemic typhus								
Botulism					1		2	
Malaria		1		2	9	2	22	
Tularemia								
Lyme disease				1	1		7	
Lyssavirus infection(excluding rabies)								
Rift valley fever								
Melioidosis	1				1		1	
Legionellosis	1	3	4	5	68	74	763	
Leptospirosis				2	3	2	6	
Rocky mountain spotted fever								

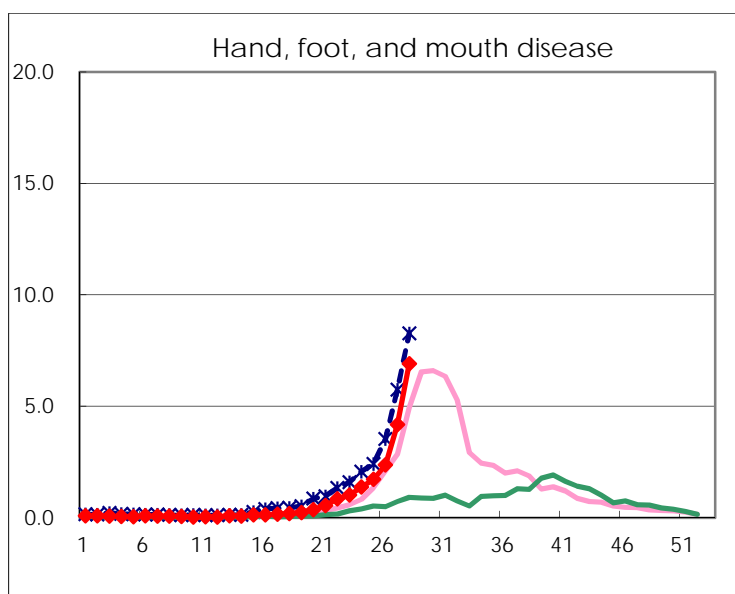
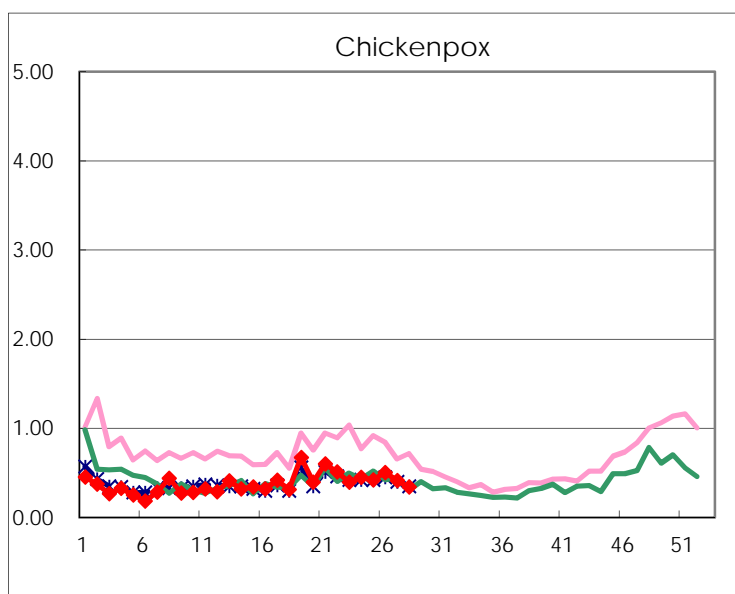
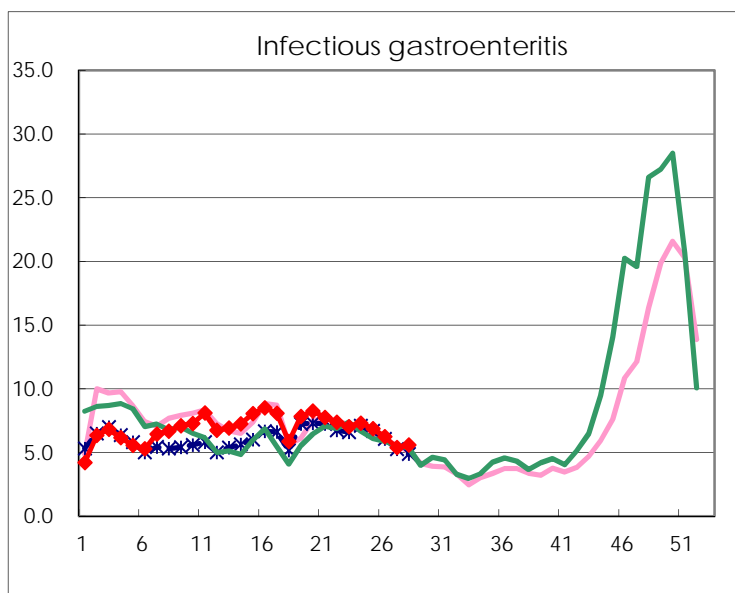
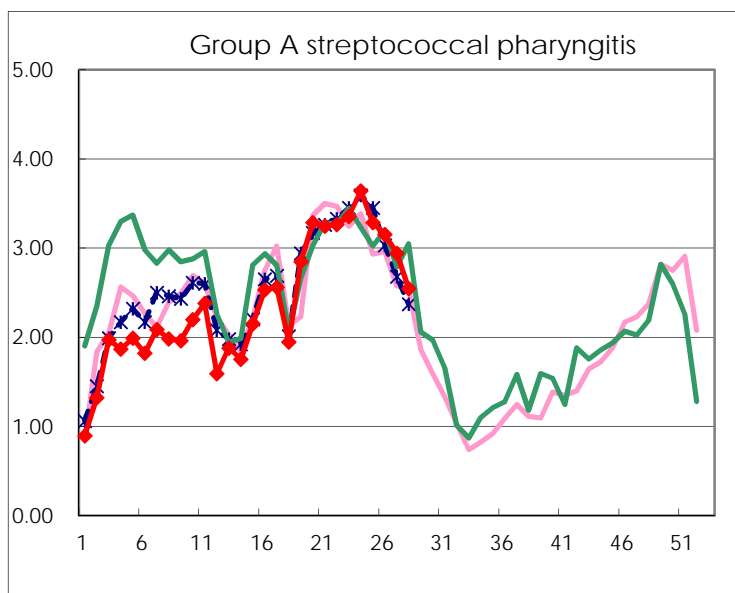
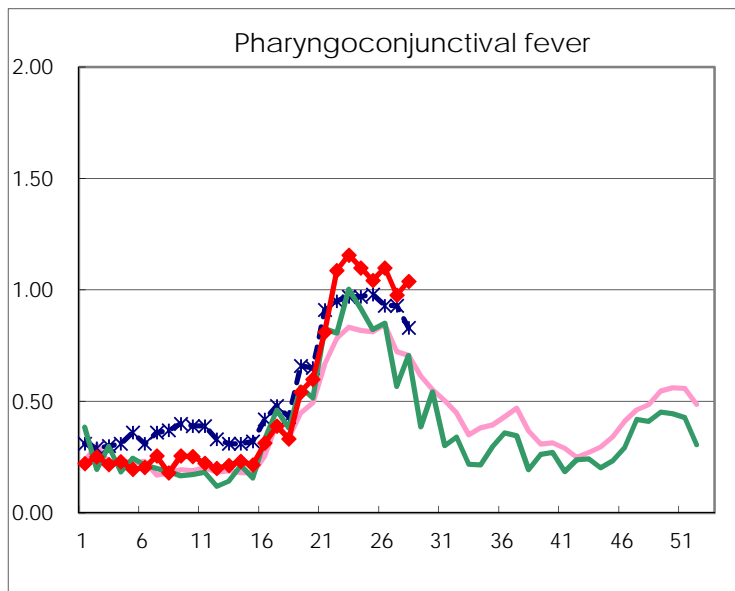
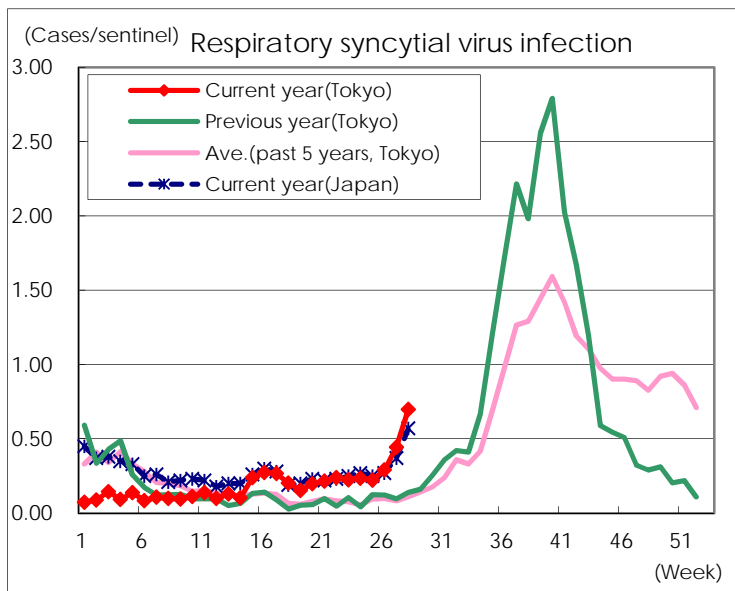
Category	Diseases	Tokyo					Japan	
		25th	26th	27th	28th	Cum 2017	28th	Cum 2017
V	Amebiasis	6	5	4	1	115	14	584
	Viral hepatitis(excluding hepatitis A and E)	2	2	1	2	33	3	158
	CRE infection	3	3	2	6	104	21	800
	Acute encephalitis(excluding JE and WNE)	2	2	3	1	38	10	392
	Cryptosporidiosis							7
	Creutzfeldt-Jakob disease		1			8	1	99
	Severe invasive streptococcal infections(TSLS)	1		3		47	5	321
	Acquired immunodeficiency syndrome (AIDS)	10	10	8	18	249	25	740
	Giardiasis	1				15		36
	Invasive <i>Haemophilus influenzae</i> disease	2		1	2	29	7	210
	Invasive meningococcal disease	1				2	1	14
	Invasive pneumococcal disease	6	10	3	7	276	17	2,052
	Varicella (limited to hospitalized case)	1	3	2		28	4	169
	Congenital rubella syndrome							
	Syphilis	34	49	39	35	922	61	2,880
	Disseminated cryptococcosis					10	3	77
	Tetanus					2	6	55
	Vancomycin-resistant <i>S. aureus</i> infection							
	Vancomycin-resistant Enterococcus infection			1		6	2	51
	Rubella			1	1	13	2	52
Measles					18	1	164	
MDRA infection					1		12	

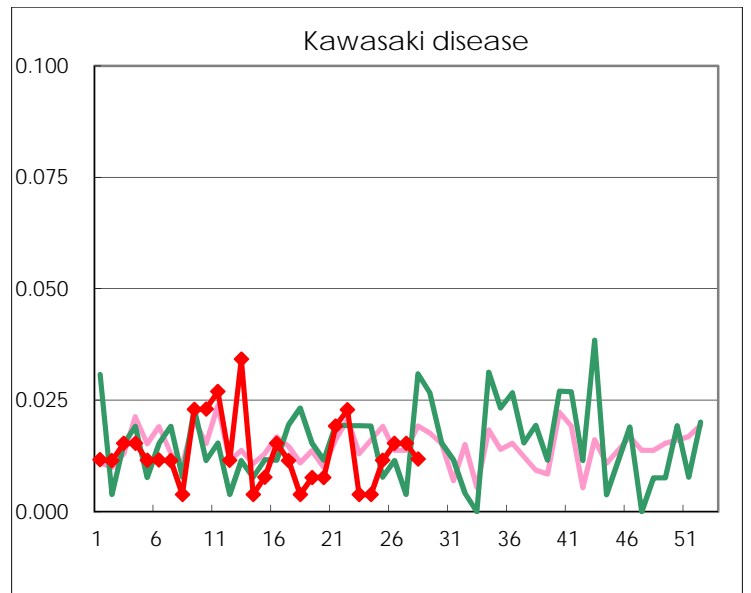
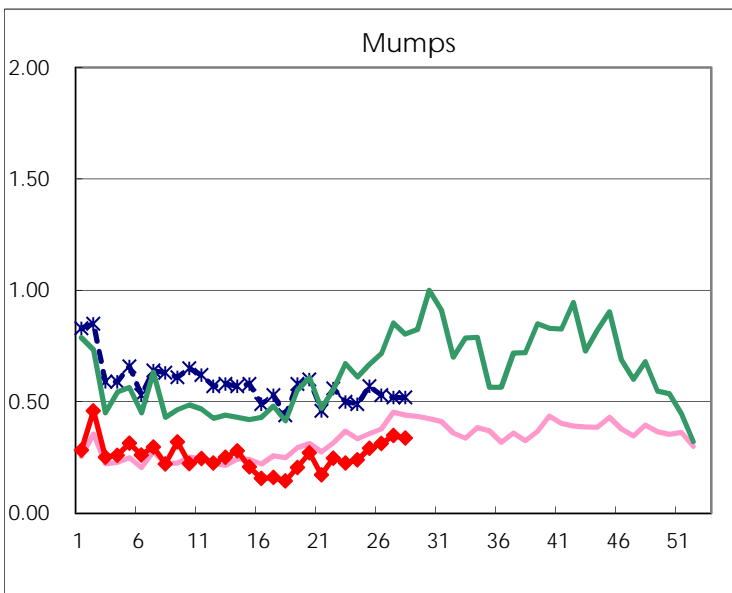
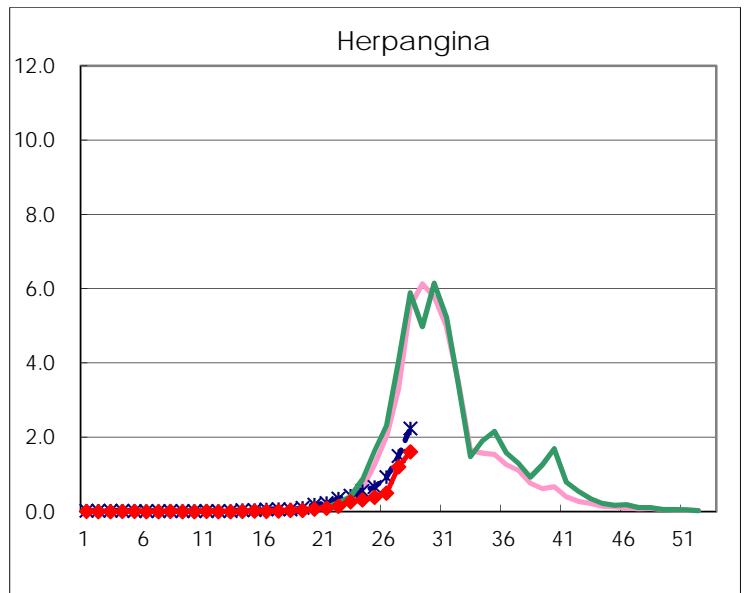
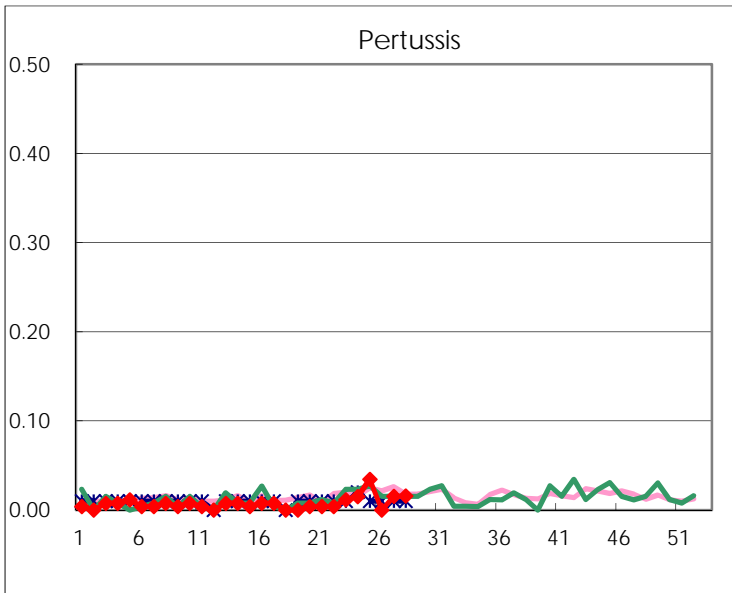
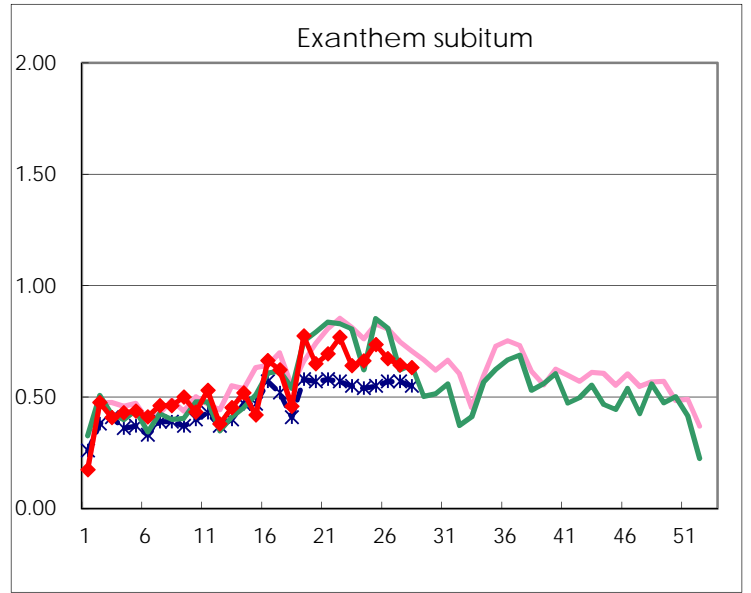
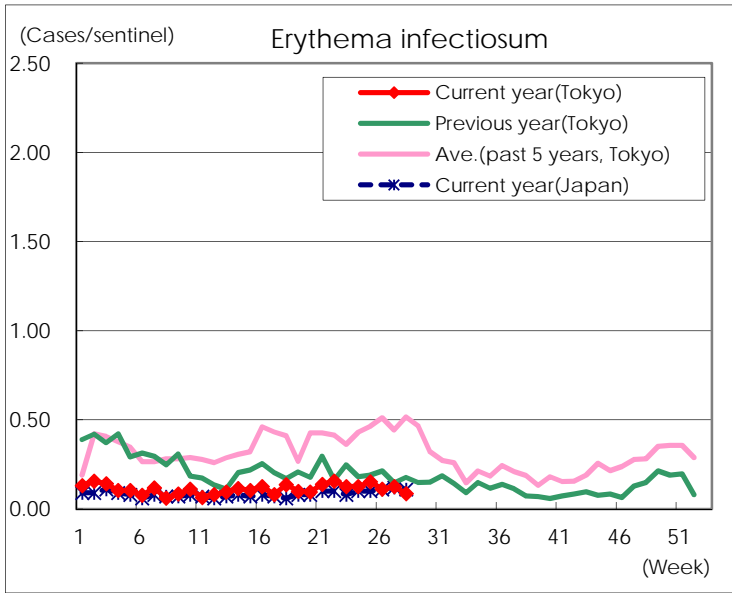
Number of patients with the diseases to be reported
by the designated clinics and hospitals

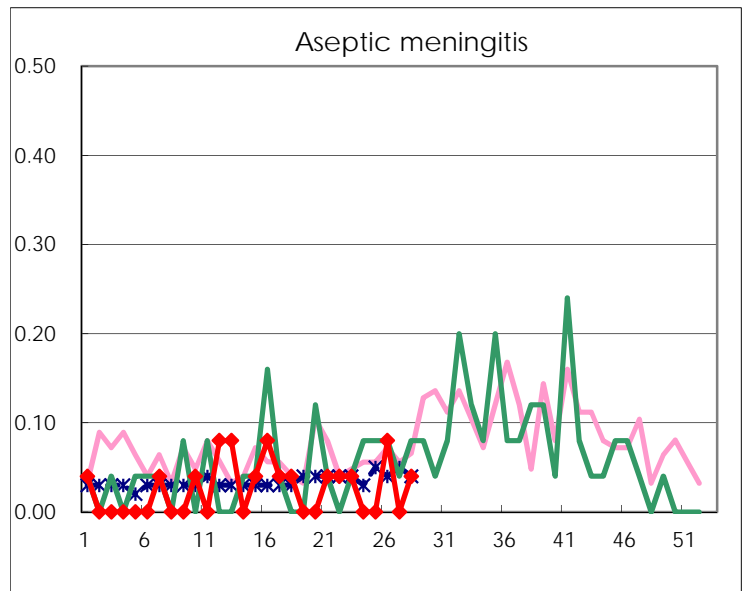
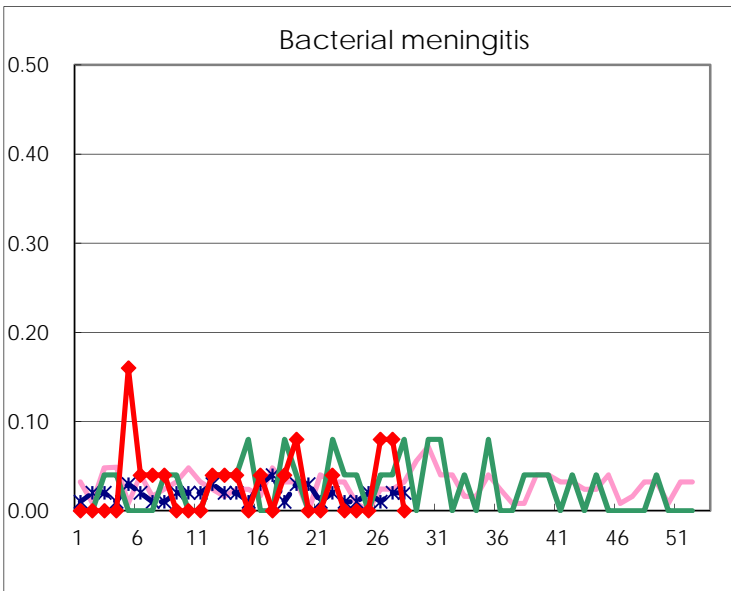
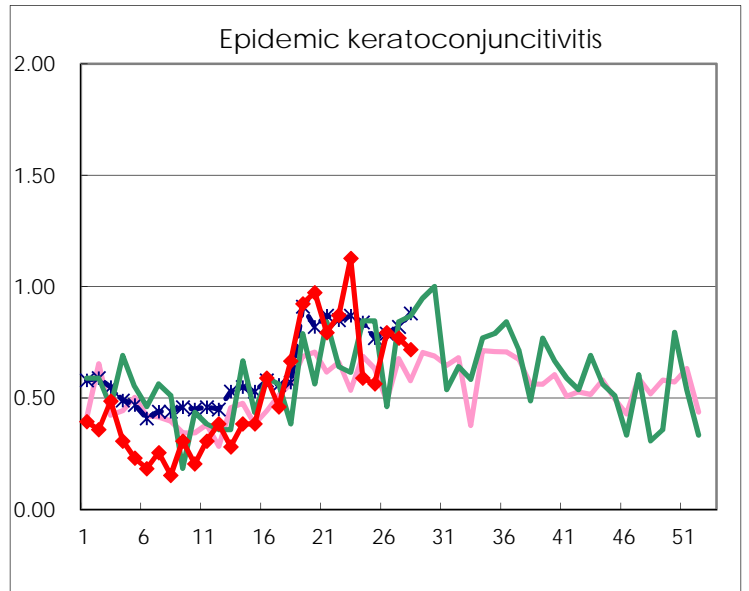
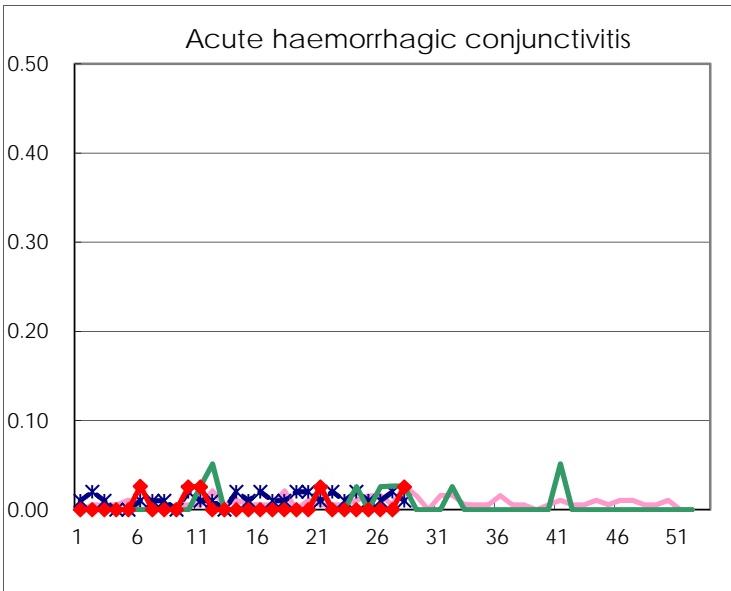
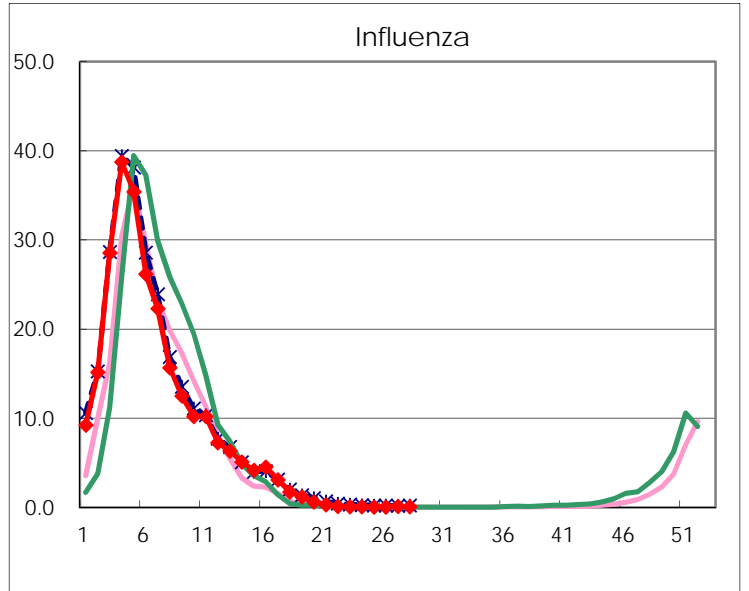
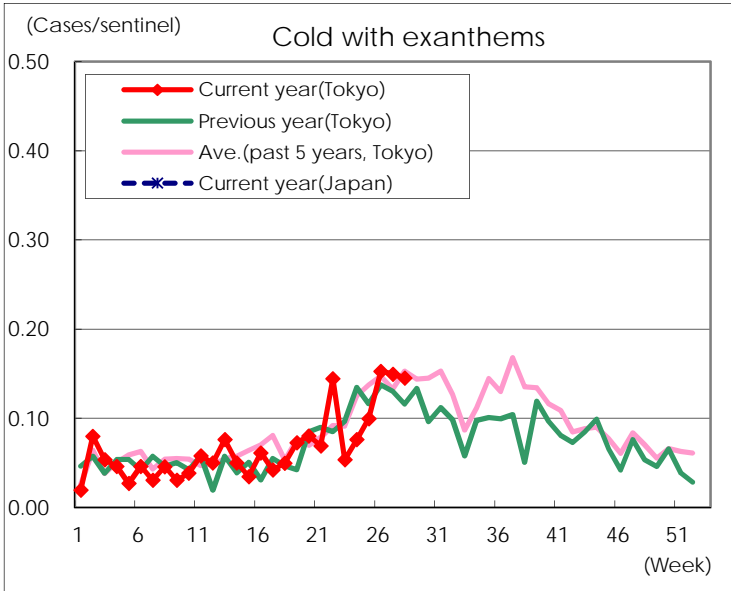
Diseases	Tokyo				
	25th	26th	27th	28th	/sentinel
Respiratory syncytial virus infection	58	76	116	178	0.70
Pharyngoconjunctival fever	272	288	255	265	1.04
Group A streptococcal pharyngitis	858	826	768	649	2.55
Infectious gastroenteritis	1,794	1,633	1,404	1,426	5.59
Chickenpox	110	132	108	87	0.34
Hand, foot, and mouth disease	449	620	1,090	1,761	6.91
Erythema infectiosum	40	29	33	22	0.09
Exanthem subitum	192	176	168	161	0.63
Pertussis	9		4	4	0.02
Herpangina	102	131	314	411	1.61
Mumps	76	82	91	86	0.34
Kawasaki disease	3	4	4	3	0.01
Cold with exanthems	26	40	39	37	0.15
Influenza	17	17	45	29	0.08
Acute hemorrhagic conjunctivitis				1	0.03
Epidemic keratoconjunctivitis	22	31	30	28	0.72
Bacterial meningitis		2	2		
Aseptic meningitis		2		1	0.04
Mycoplasma pneumonia	5	1	6	4	0.16
Chlamydial pneumonia (excluding psittacosis)	1	2	1		
Infectious gastroenteritis (only by Rotavirus)	1			1	0.04
Influenza-Associated Hospitalizations					

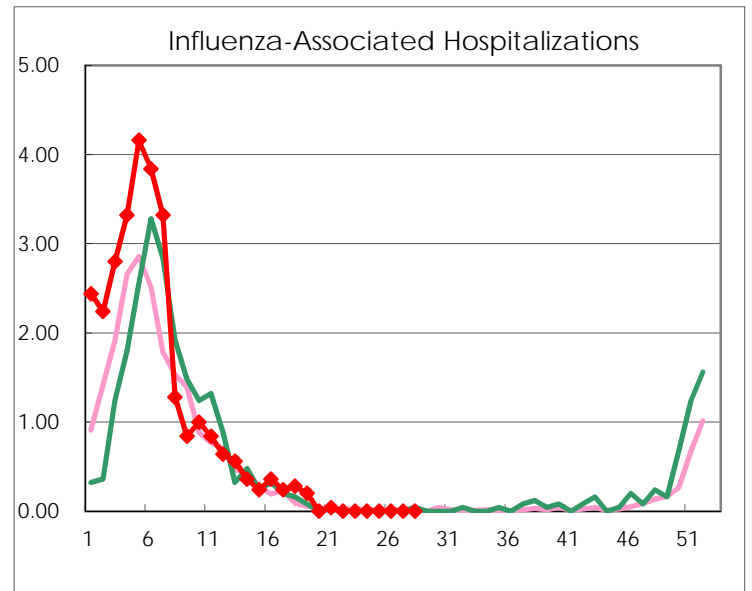
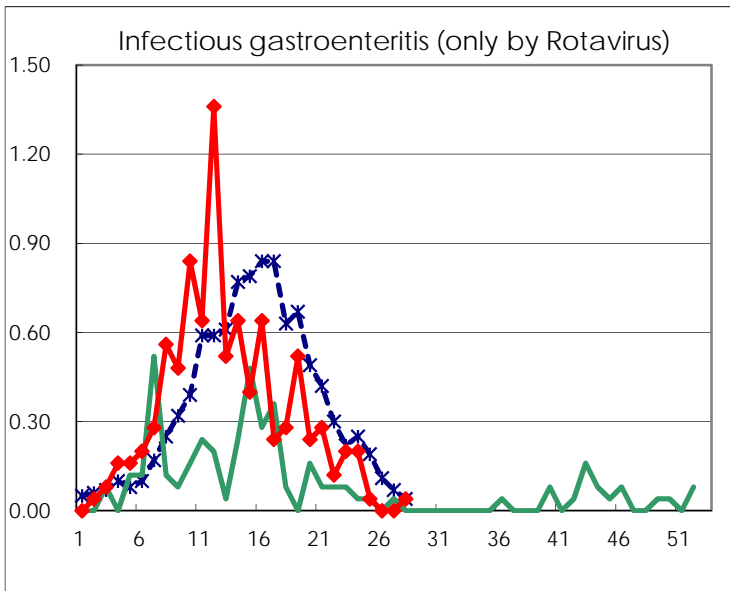
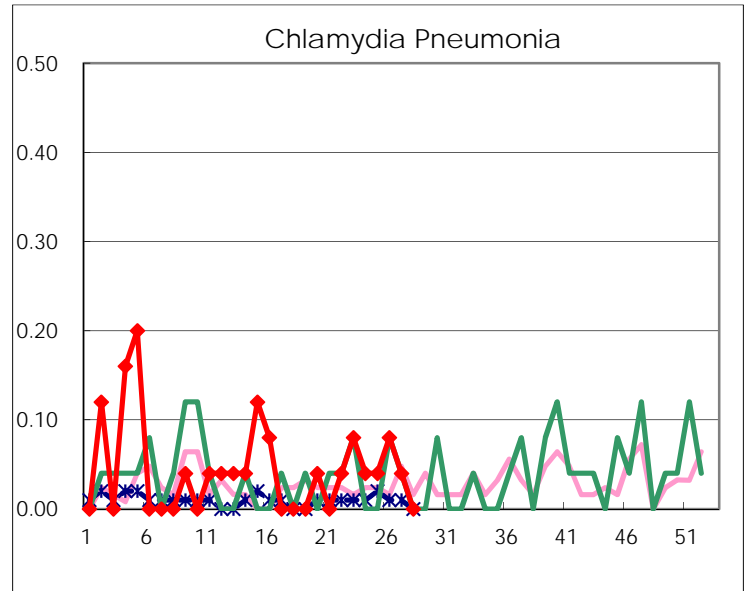
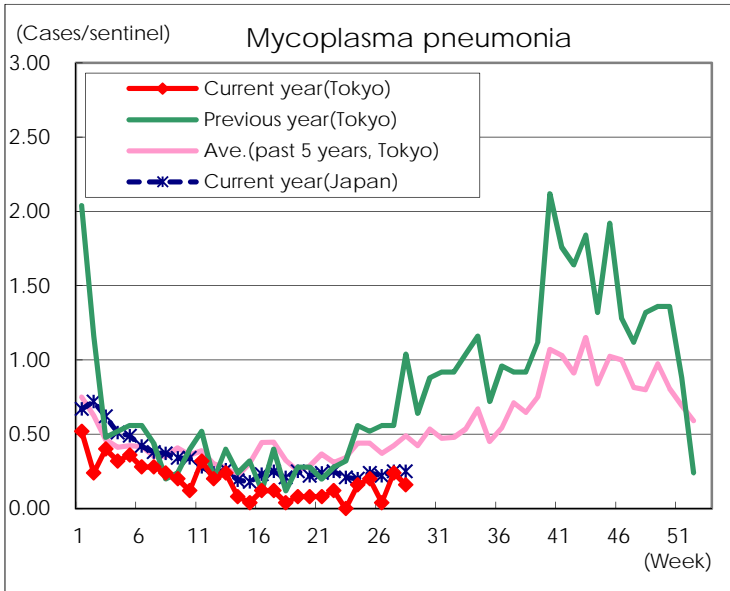
(Blank means 0.)

Disease Trend Graph (weekly reported cases per sentinel in comparison)









Number of sentinel facilities for weekly reporting		
Types of sentinels	Number of sentinels	Sentinels having reported
Pediatric	264	255
Influenza	419	382
Ophthalmic	39	39
Specially-designated	25	25