

## 3 August 2017 / Number 30

### Surveillance System in Tokyo, Japan

The infectious diseases which all physicians must report

All physicians must report to health centers the incidence of the diseases which are shown at page one. Health centers electronically report the individual cases to Tokyo Metropolitan Infectious Disease Surveillance Center.

The infectious diseases required to be reported by the sentinels

The numbers of patients who visit the sentinel clinics or hospitals during a week are reported to health centers in Tokyo. And they electronically report the numbers to Tokyo Metropolitan Infectious Disease Surveillance Center. We have about 500 sentinel clinics and hospitals in Tokyo.

Tokyo Metropolitan Institute of Public Health

TEL:81-3-3363-3213 FAX:81-3-5332-7365

e-mail:[www@tokyo-eiken.go.jp](mailto:www@tokyo-eiken.go.jp)

URL:[idsc.tokyo-eiken.go.jp/](http://idsc.tokyo-eiken.go.jp/)

---

Number of patients with the diseases which all physicians must report

Category	Diseases	Tokyo					Japan	
		27th	28th	29th	30th	Cum 2017	30th	Cum 2017
I	Ebola hemorrhagic fever							
	Crimean-Congo hemorrhagic fever							
	Smallpox							
	South American hemorrhagic fever							
	Plague							
	Marburg disease							
II	Lassa fever							
	Acute poliomyelitis							
	Tuberculosis	55	72	43	53	1,910	389	12,811
	Diphtheria							
	Severe Acute Respiratory Syndrome(SARS)							
	Middle East Respiratory Syndrome (MERS)							
III	Avian influenza H5N1							
	Avian influenza H7N9							
	Cholera				1	2	1	5
	Shigellosis			2	1	22	2	88
	Enterohemorrhagic Escherichia coli infection	7	9	9	19	107	176	1,215
IV	Typhoid fever	1				6		22
	Paratyphoid fever	1				4	1	9
	Hepatitis E		1	1		38	5	197
	West Nile fever							
	Hepatitis A	2				49	6	179
	Echinococcosis		1			1		19
	Yellow fever							
	Psittacosis							11
	Omsk hemorrhagic fever							
	Relapsing fever	1				1		2
	Kyasanur forest disease							
	Q fever							
	Rabies							
	Coccidioidomycosis							
	Monkeypox							
	Zika virus infection							2
	Severe Fever with Thrombocytopenia Syndrome						8	59
	Hemorrhagic fever with renal syndrome							
	Western equine encephalitis							
	Tick-borne encephalitis							1
	Anthrax							
	Chikungunya fever	1				2		2
	Scrub typhus(Tsutsugamushi disease)					2		100
	Dengue fever	1	1	1	2	31	4	109
	Eastern equine encephalitis							
	Avian influenza (excluding H5N1 and H7N9)							
	Nipah virus infection							
	Japanese spotted fever						8	129
	Japanese encephalitis							
	Hantavirus pulmonary syndrome							
	Herpes B virus infection							
	Glanders							
Brucellosis							1	
Venezuelan equine encephalitis								
Hendra virus infection								
Epidemic typhus								
Botulism					1		3	
Malaria		2	1	1	11	2	26	
Tularemia								
Lyme disease		1			1		11	
Lyssavirus infection(excluding rabies)								
Rift valley fever								
Melioidosis					1		1	
Legionellosis	4	5	5	4	77	41	866	
Leptospirosis		2			3		8	
Rocky mountain spotted fever								

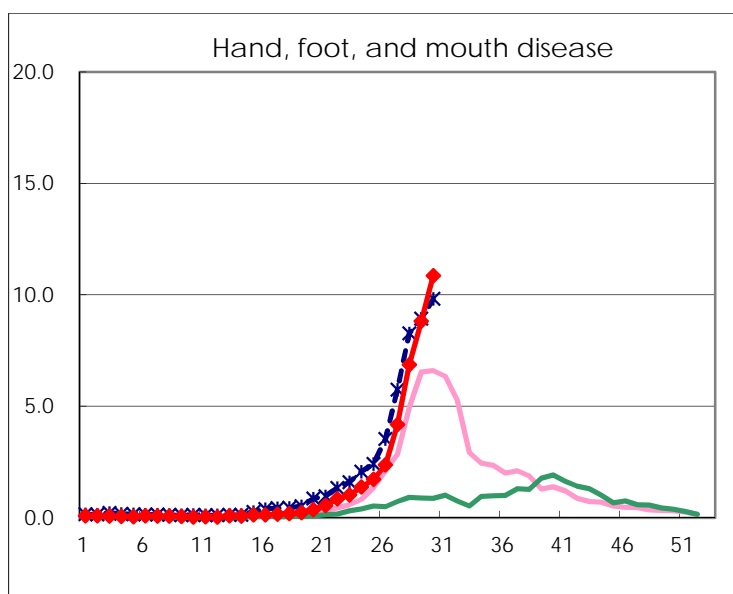
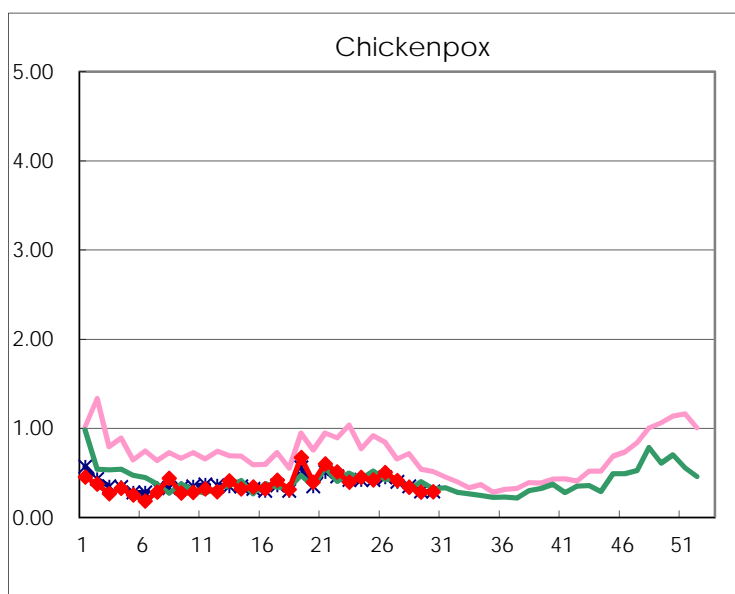
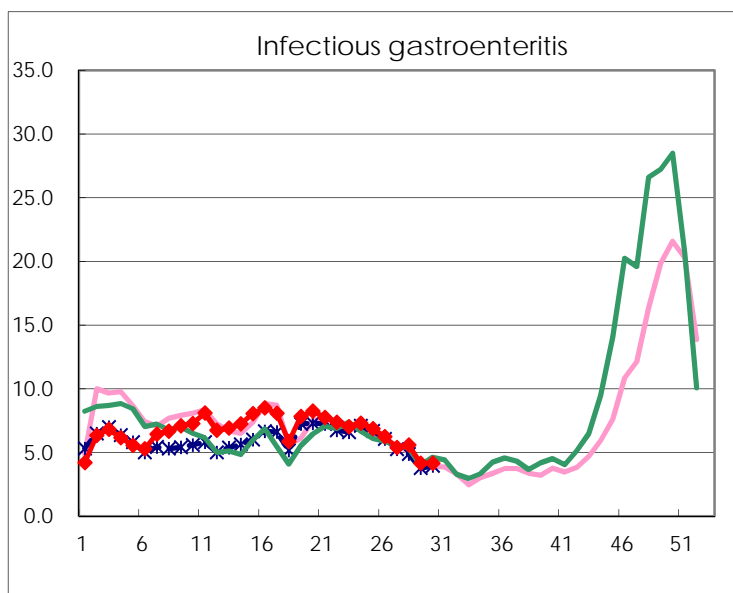
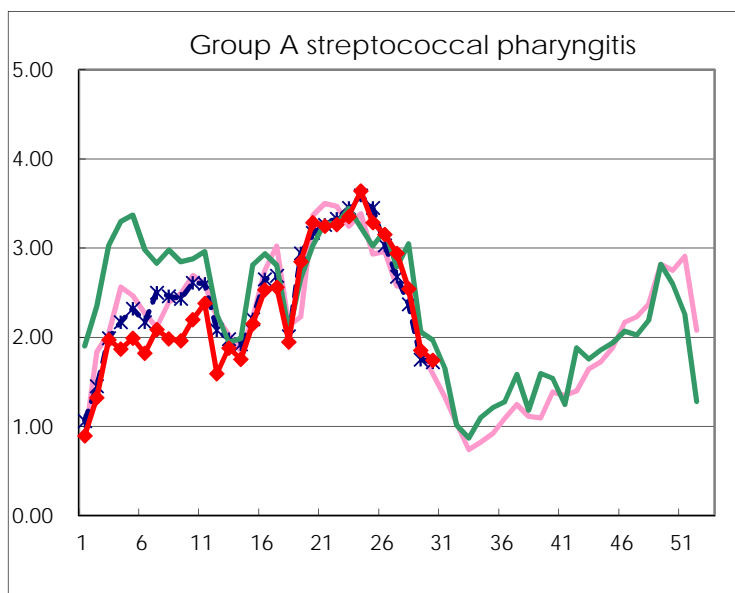
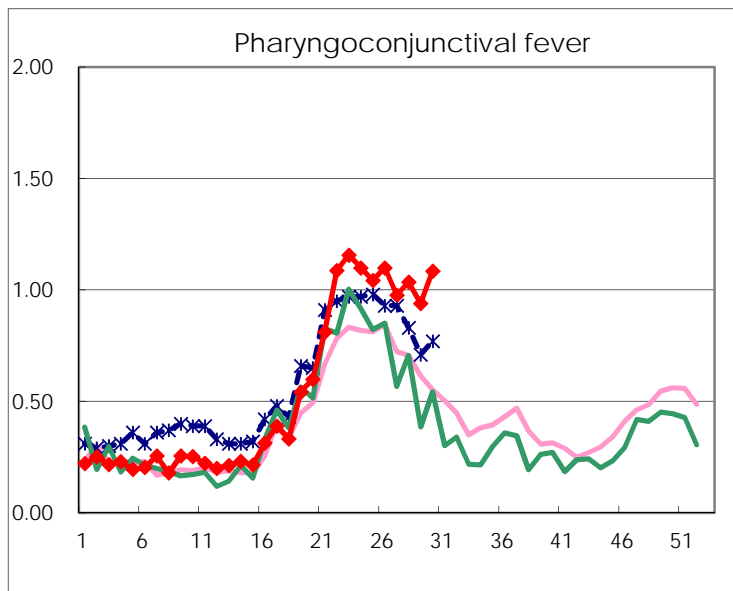
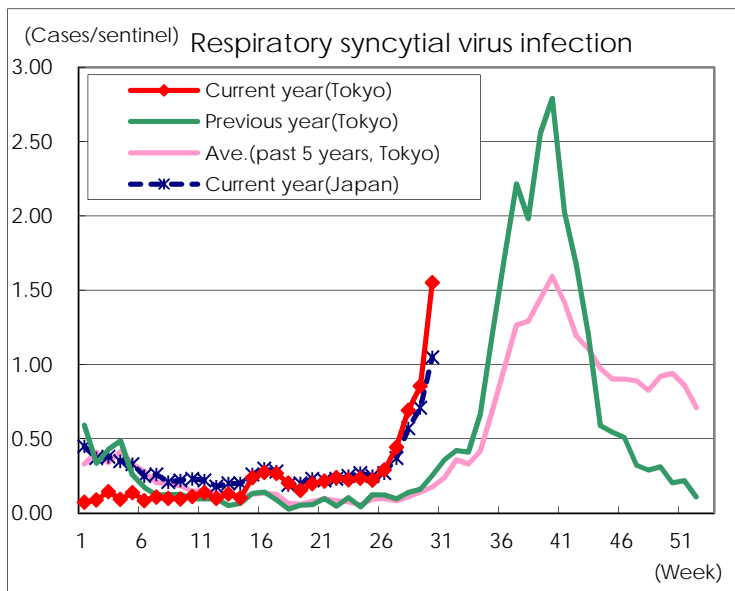
Category	Diseases	Tokyo					Japan	
		27th	28th	29th	30th	Cum 2017	30th	Cum 2017
V	Amebiasis	4	1	4	7	126	16	634
	Viral hepatitis(excluding hepatitis A and E)	1	2		1	34	1	165
	CRE infection	2	9	4	5	116	16	867
	Acute encephalitis(excluding JE and WNE)	3	1	1	3	42	11	424
	Cryptosporidiosis							7
	Creutzfeldt-Jakob disease			2		10	1	109
	Severe invasive streptococcal infections(TSLS)	3		1	1	48	6	332
	Acquired immunodeficiency syndrome (AIDS)	8	18	10	15	274	18	797
	Giardiasis				1	16		37
	Invasive <i>Haemophilus influenzae</i> disease	1	3	3	1	34	4	229
	Invasive meningococcal disease					2		16
	Invasive pneumococcal disease	3	8	2	4	283	27	2,135
	Varicella (limited to hospitalized case)	2	1	2	1	32	4	186
	Congenital rubella syndrome							
	Syphilis	39	35	27	38	987	80	3,123
	Disseminated cryptococcosis					10	1	79
	Tetanus					2	5	64
	Vancomycin-resistant <i>S. aureus</i> infection							
	Vancomycin-resistant Enterococcus infection	1				6	2	54
	Rubella	1	1			13	1	53
Measles		1			19		168	
MDRA infection					1	1	13	

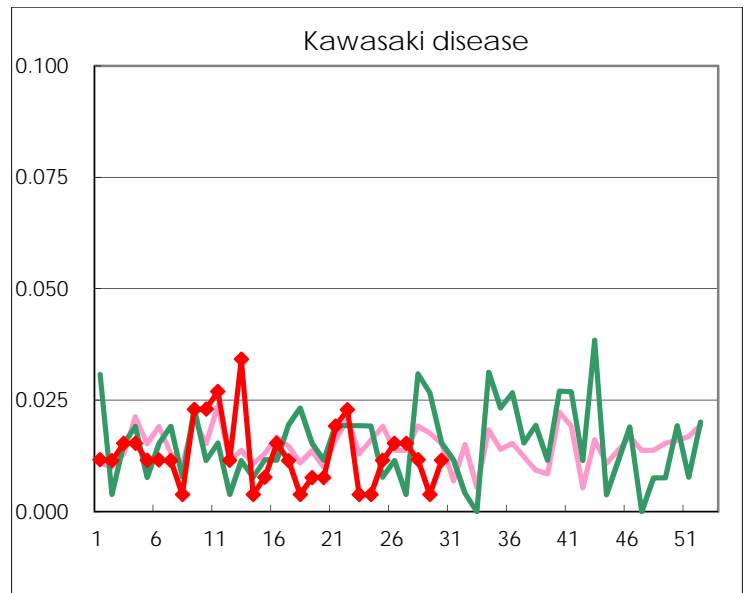
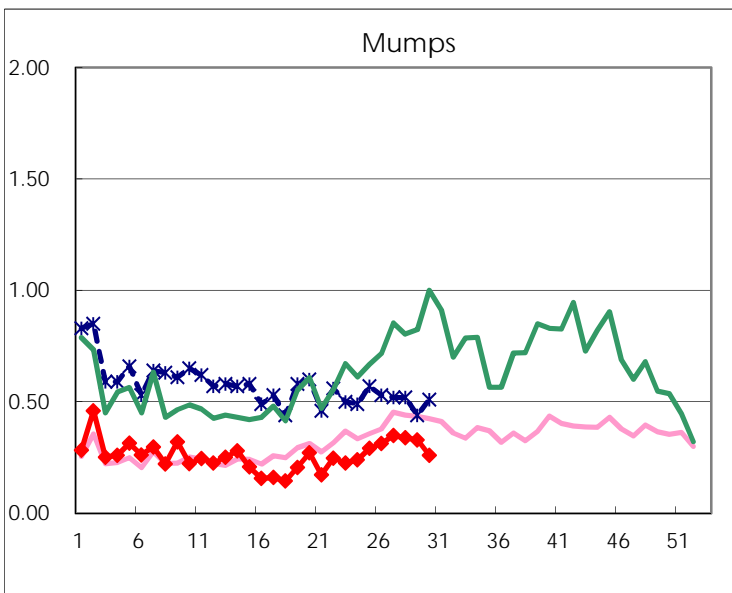
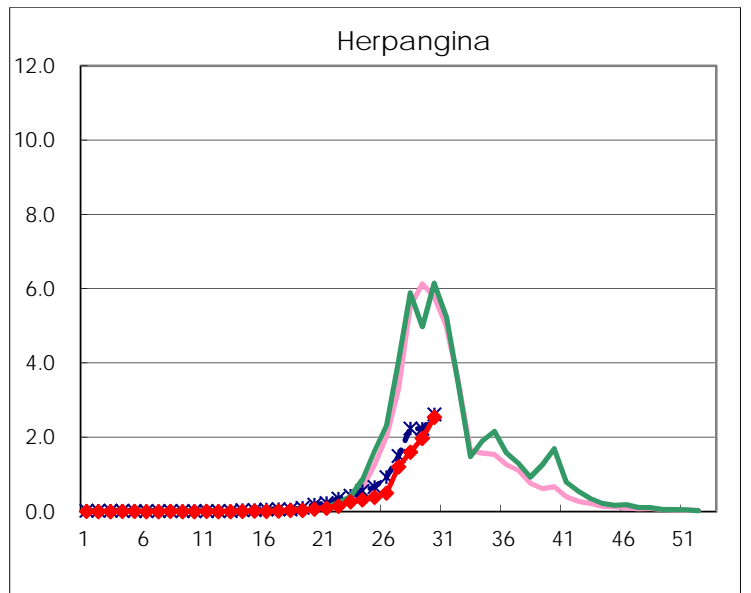
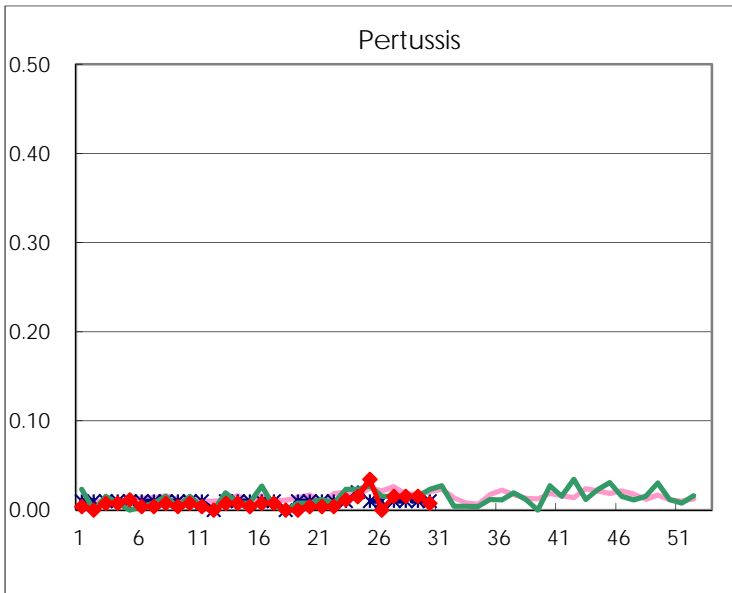
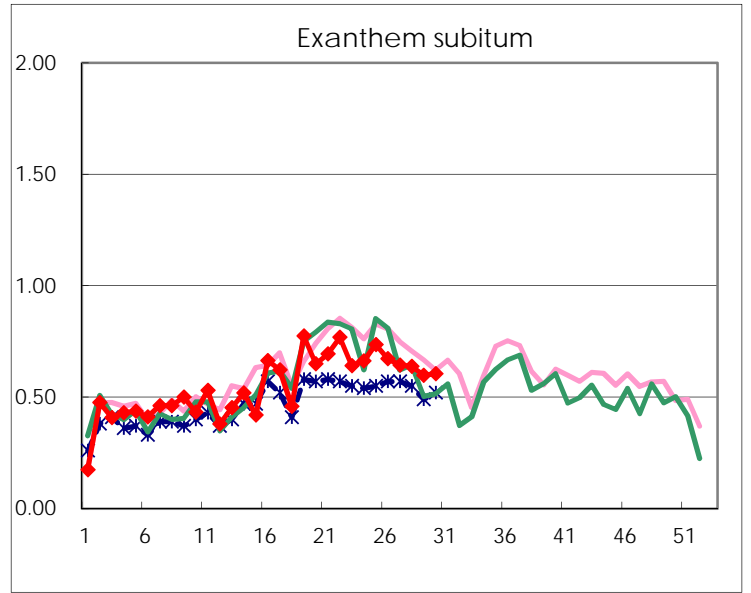
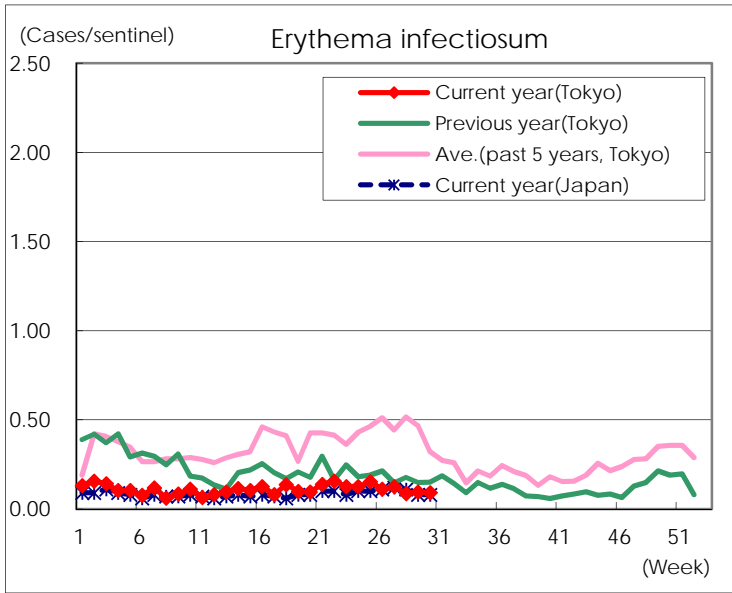
Number of patients with the diseases to be reported  
by the designated clinics and hospitals

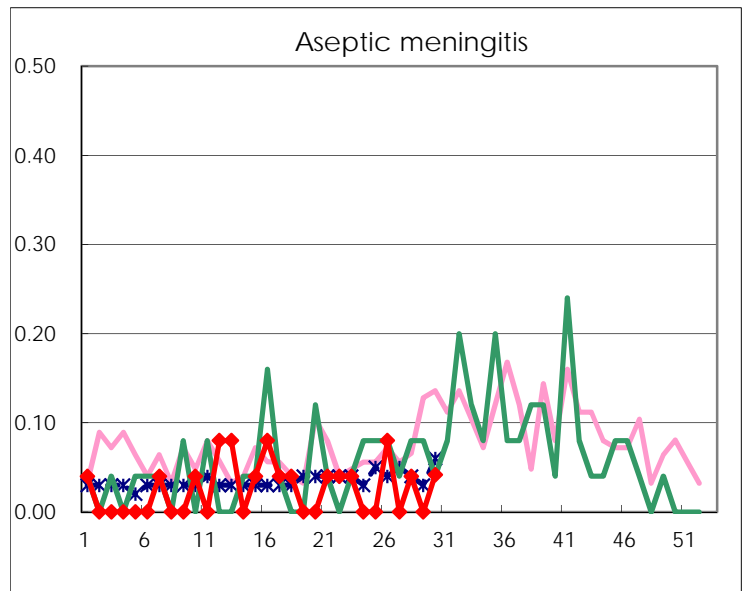
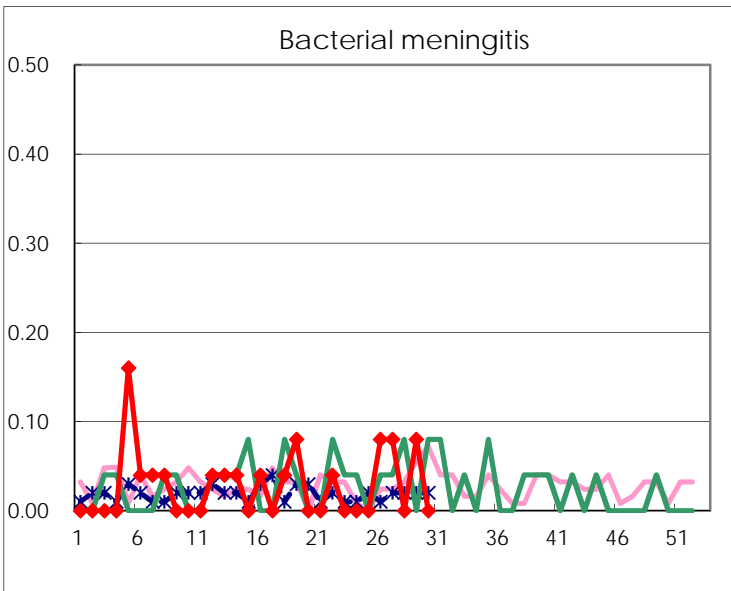
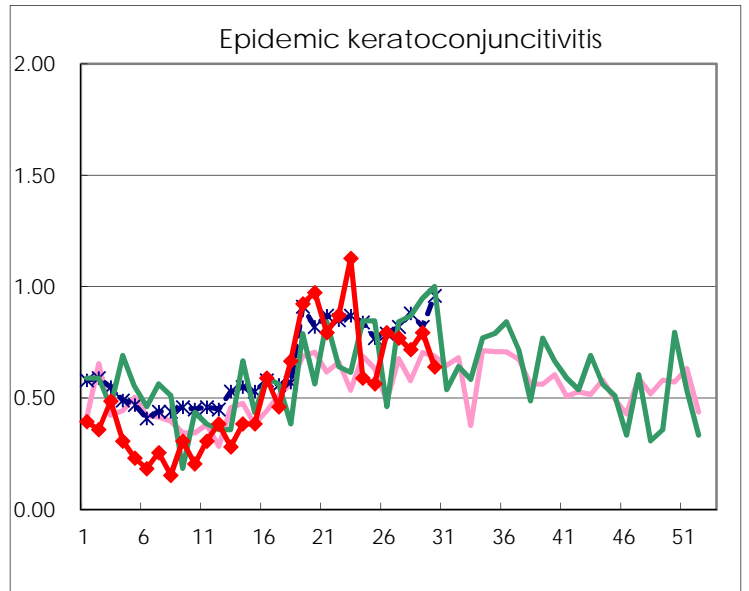
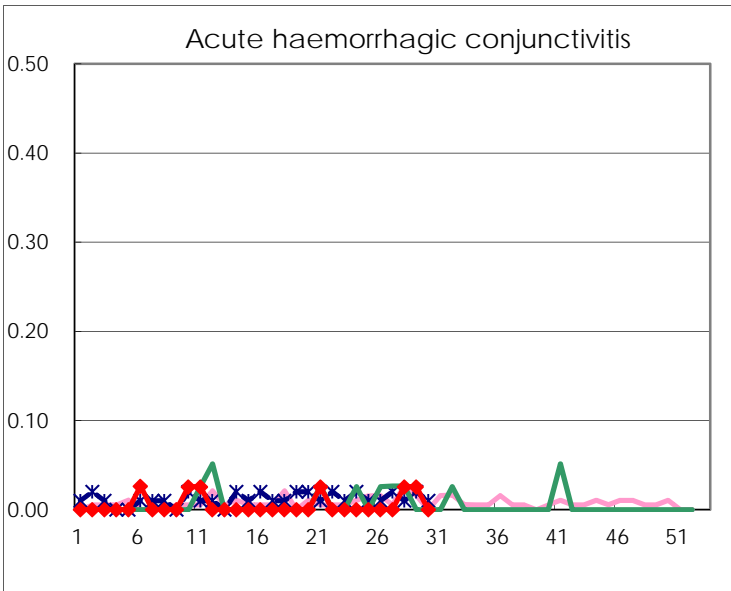
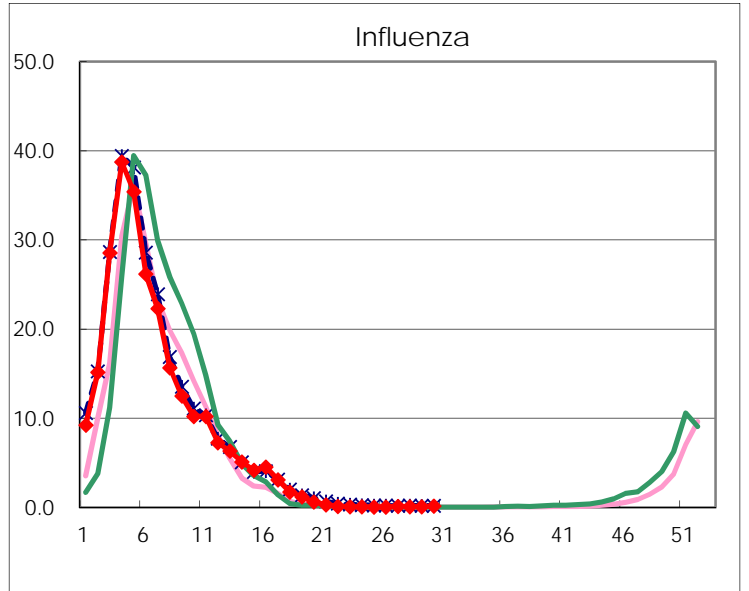
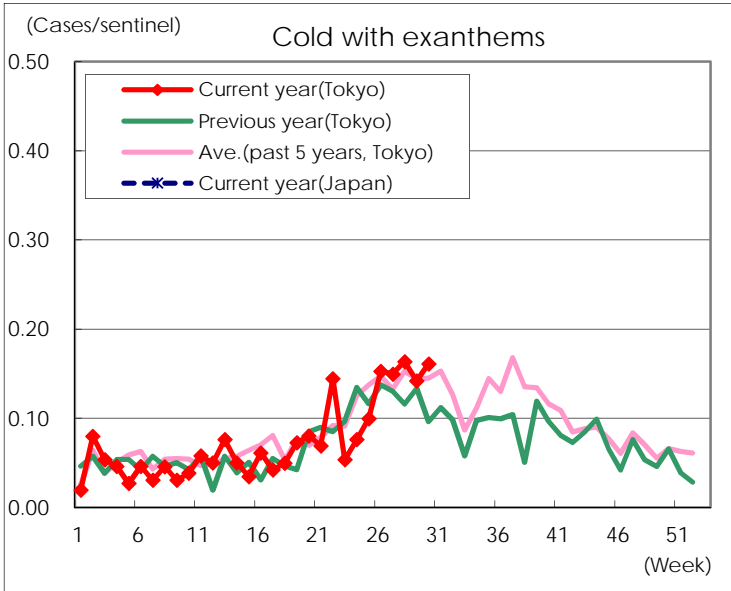
Diseases	Tokyo				
	27th	28th	29th	30th	/sentinel
Respiratory syncytial virus infection	116	178	223	405	1.55
Pharyngoconjunctival fever	255	266	245	283	1.08
Group A streptococcal pharyngitis	768	653	484	455	1.74
Infectious gastroenteritis	1,404	1,432	1,080	1,084	4.15
Chickenpox	108	87	74	75	0.29
Hand, foot, and mouth disease	1,090	1,764	2,301	2,835	10.86
Erythema infectiosum	33	22	25	24	0.09
Exanthem subitum	168	164	156	158	0.61
Pertussis	4	4	4	2	0.01
Herpangina	314	412	516	663	2.54
Mumps	91	87	86	68	0.26
Kawasaki disease	4	3	1	3	0.01
Cold with exanthems	39	42	37	42	0.16
Influenza	45	31	38	60	0.15
Acute hemorrhagic conjunctivitis		1	1		
Epidemic keratoconjunctivitis	30	28	31	25	0.64
Bacterial meningitis	2		2		
Aseptic meningitis		1		1	0.04
Mycoplasma pneumonia	6	4	2	3	0.13
Chlamydial pneumonia (excluding psittacosis)	1				
Infectious gastroenteritis (only by Rotavirus)		1			
Influenza-Associated Hospitalizations			2	2	0.08

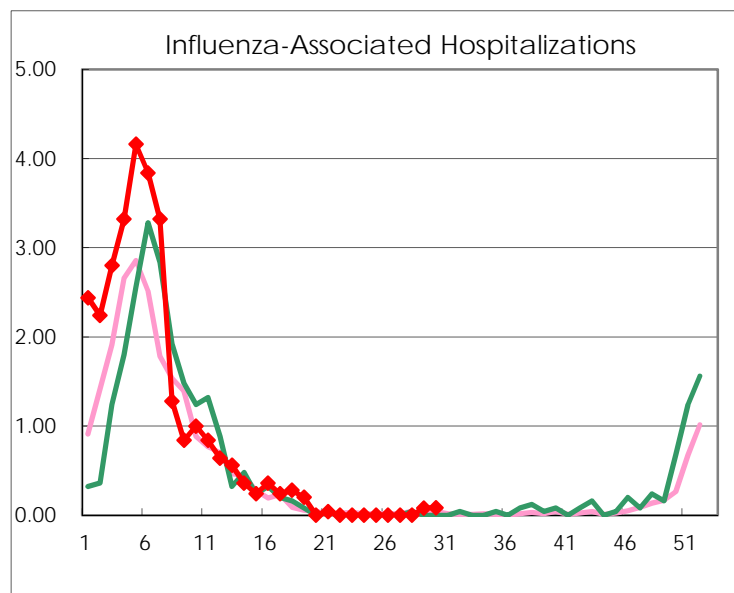
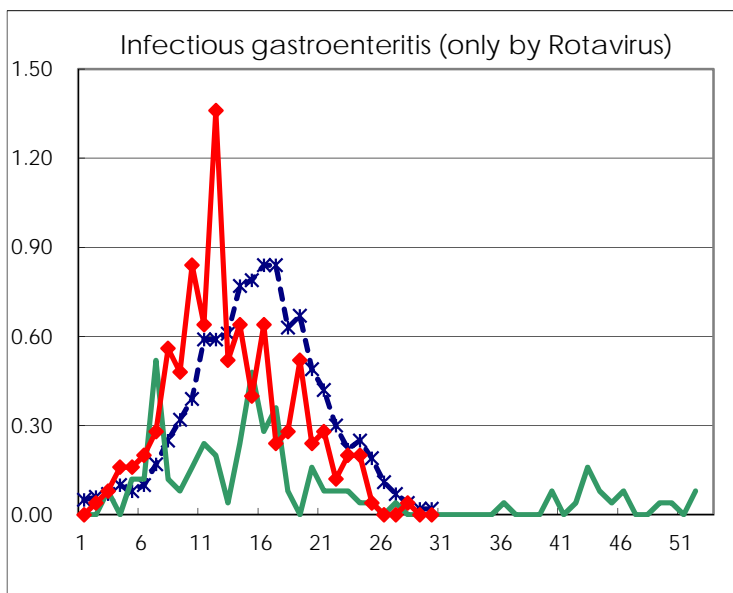
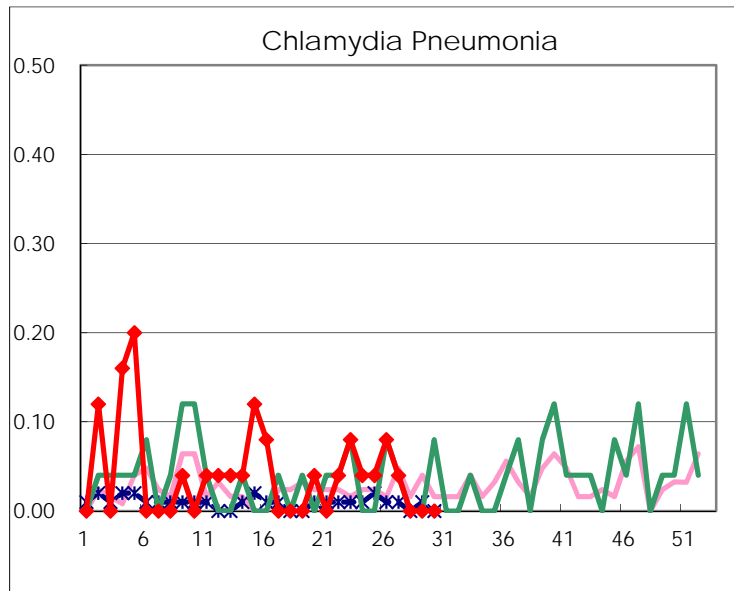
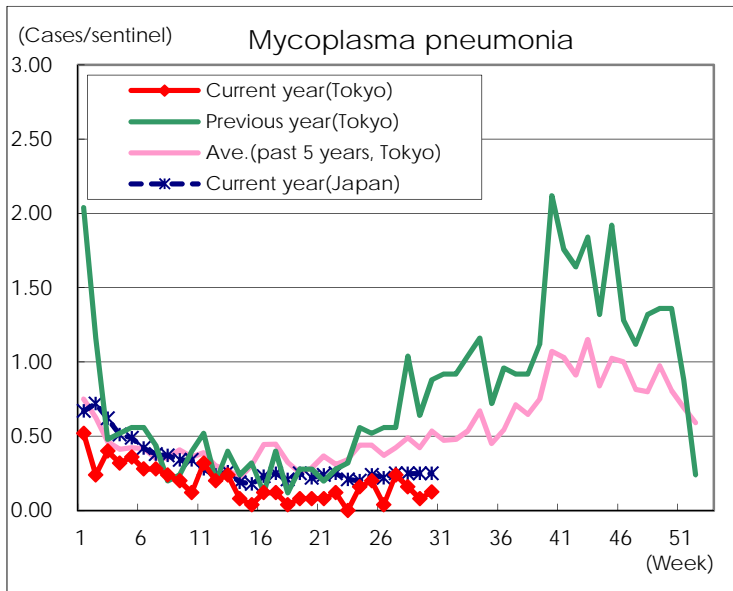
( Blank means 0. )

# Disease Trend Graph (weekly reported cases per sentinel in comparison)









Number of sentinel facilities for weekly reporting		
Types of sentinels	Number of sentinels	Sentinels having reported
Pediatric	264	261
Influenza	419	412
Ophthalmic	39	39
Specially-designated	25	24