

10 August 2017 / Number 31

Surveillance System in Tokyo, Japan

The infectious diseases which all physicians must report

All physicians must report to health centers the incidence of the diseases which are shown at page one. Health centers electronically report the individual cases to Tokyo Metropolitan Infectious Disease Surveillance Center.

The infectious diseases required to be reported by the sentinels

The numbers of patients who visit the sentinel clinics or hospitals during a week are reported to health centers in Tokyo. And they electronically report the numbers to Tokyo Metropolitan Infectious Disease Surveillance Center. We have about 500 sentinel clinics and hospitals in Tokyo.

Tokyo Metropolitan Institute of Public Health

TEL:81-3-3363-3213 FAX:81-3-5332-7365

e-mail:www@tokyo-eiken.go.jp

URL:idsc.tokyo-eiken.go.jp/

Number of patients with the diseases which all physicians must report

Category	Diseases	Tokyo					Japan	
		28th	29th	30th	31st	Cum 2017	31st	Cum 2017
I	Ebola hemorrhagic fever							
	Crimean-Congo hemorrhagic fever							
	Smallpox							
	South American hemorrhagic fever							
	Plague							
	Marburg disease							
	Lassa fever							
II	Acute poliomyelitis							
	Tuberculosis	72	45	56	63	1,979	367	13,296
	Diphtheria							
	Severe Acute Respiratory Syndrome(SARS)							
	Middle East Respiratory Syndrome (MERS)							
	Avian influenza H5N1							
	Avian influenza H7N9							
III	Cholera			1		2		5
	Shigellosis		2	1	2	24	4	92
	Enterohemorrhagic Escherichia coli infection	9	9	19	16	123	174	1,420
	Typhoid fever					6		22
	Paratyphoid fever					4		9
IV	Hepatitis E	1	1		2	40	6	205
	West Nile fever							
	Hepatitis A				1	50	5	184
	Echinococcosis	1				1		19
	Yellow fever							
	Psittacosis							11
	Omsk hemorrhagic fever							
	Relapsing fever					1		2
	Kyasanur forest disease							
	Q fever							
	Rabies							
	Coccidioidomycosis				1	1		1
	Monkeypox							
	Zika virus infection							2
	Severe Fever with Thrombocytopenia Syndrome						5	64
	Hemorrhagic fever with renal syndrome							
	Western equine encephalitis							
	Tick-borne encephalitis							1
	Anthrax							
	Chikungunya fever					2		2
	Scrub typhus(Tsutsugamushi disease)				1	3		102
	Dengue fever	1	1	2	3	34	6	116
	Eastern equine encephalitis							
	Avian influenza (excluding H5N1 and H7N9)							
	Nipah virus infection							
	Japanese spotted fever						8	145
	Japanese encephalitis							
	Hantavirus pulmonary syndrome							
	Herpes B virus infection							
	Glanders							
	Brucellosis							1
	Venezuelan equine encephalitis							
Hendra virus infection								
Epidemic typhus								
Botulism					1		3	
Malaria	2	1	1		11	1	27	
Tularemia								
Lyme disease	1				1	1	12	
Lyssavirus infection(excluding rabies)								
Rift valley fever								
Melioidosis					1		1	
Legionellosis	5	5	4		77	28	903	
Leptospirosis	2				3	1	9	
Rocky mountain spotted fever								

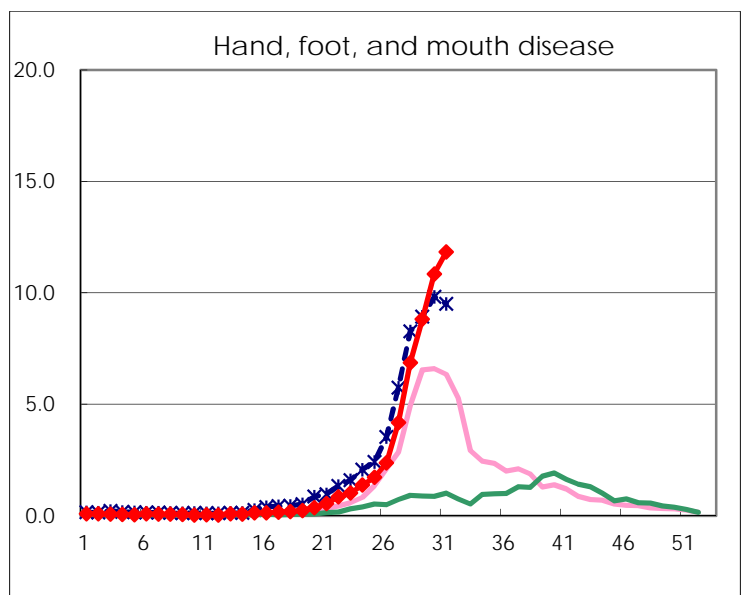
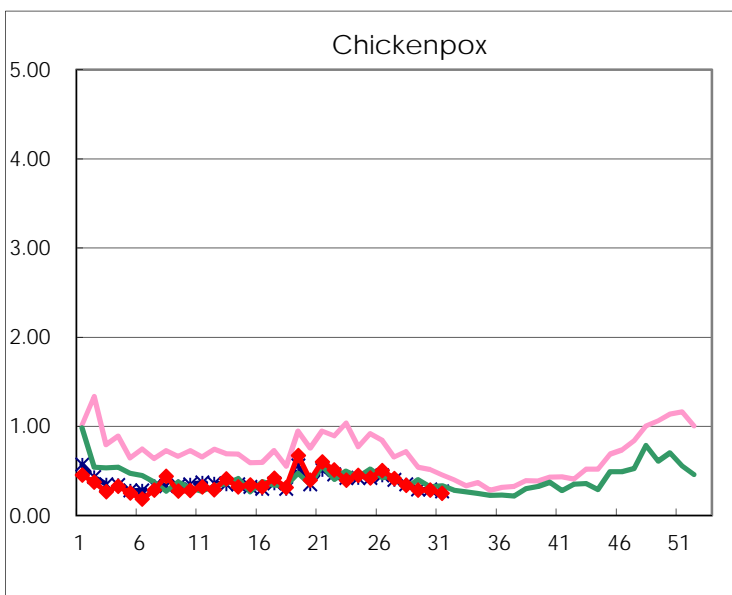
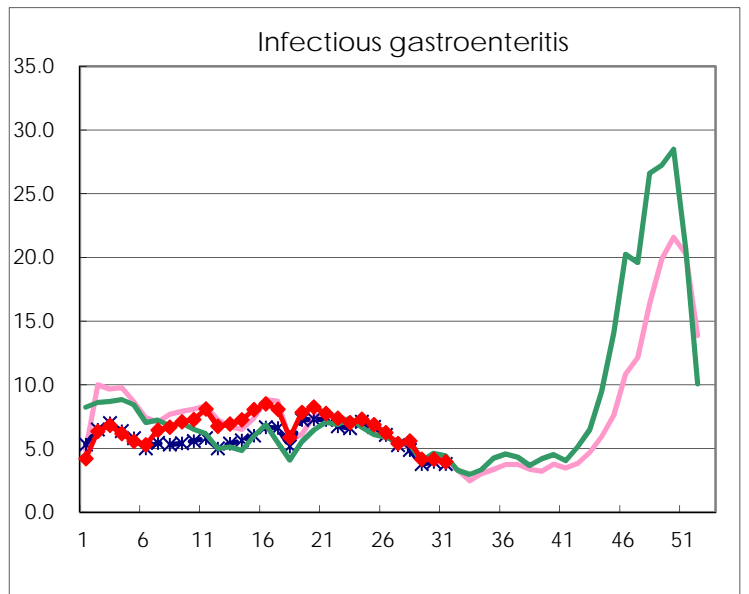
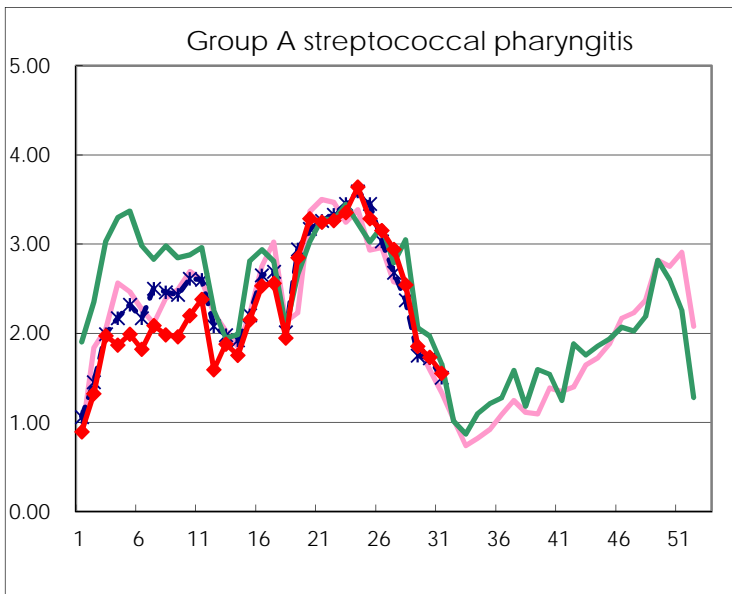
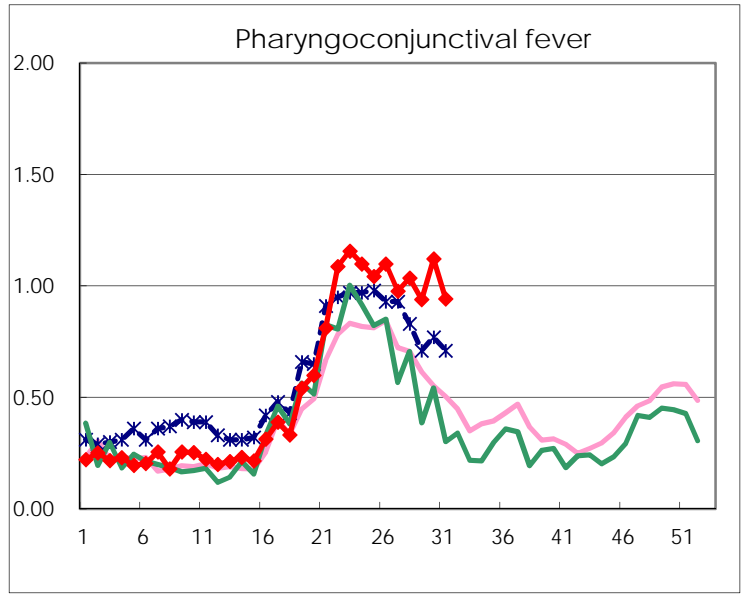
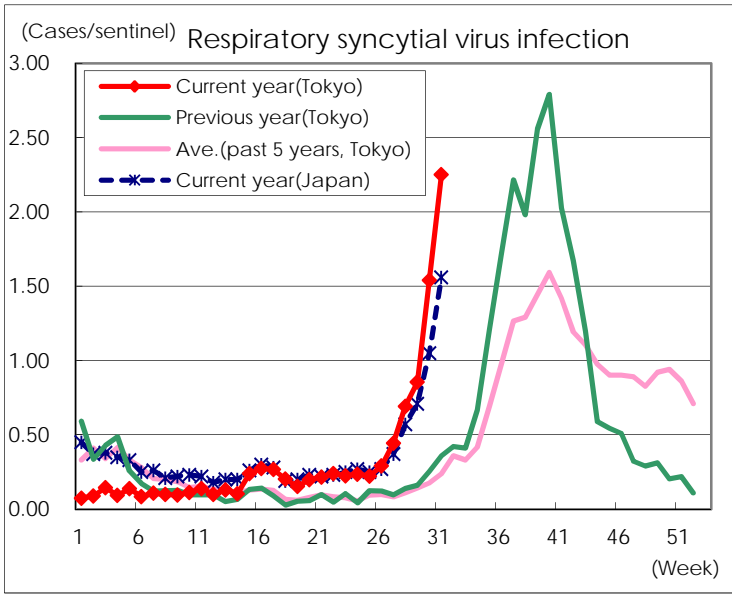
Category	Diseases	Tokyo					Japan	
		28th	29th	30th	31st	Cum 2017	31st	Cum 2017
V	Amebiasis	1	4	7	1	127	11	651
	Viral hepatitis(excluding hepatitis A and E)	2		1	1	35	3	172
	CRE infection	9	4	5	6	122	22	903
	Acute encephalitis(excluding JE and WNE)	1	1	3	1	43	9	439
	Cryptosporidiosis							7
	Creutzfeldt-Jakob disease		2			10	2	117
	Severe invasive streptococcal infections(TSLS)		1	1	2	50	5	341
	Acquired immunodeficiency syndrome (AIDS)	18	10	15	7	281	14	824
	Giardiasis			1		16		37
	Invasive <i>Haemophilus influenzae</i> disease	3	3	1	2	36	2	236
	Invasive meningococcal disease					2		16
	Invasive pneumococcal disease	8	2	4	5	288	16	2,164
	Varicella (limited to hospitalized case)	1	2	1		32	1	187
	Congenital rubella syndrome							
	Syphilis	35	27	42	49	1,040	79	3,252
	Disseminated cryptococcosis					10	2	81
	Tetanus				1	3	3	68
	Vancomycin-resistant <i>S. aureus</i> infection							
	Vancomycin-resistant Enterococcus infection					6		54
	Rubella	1				13	2	54
Measles	1			1	20	1	169	
MDRA infection					1	1	14	

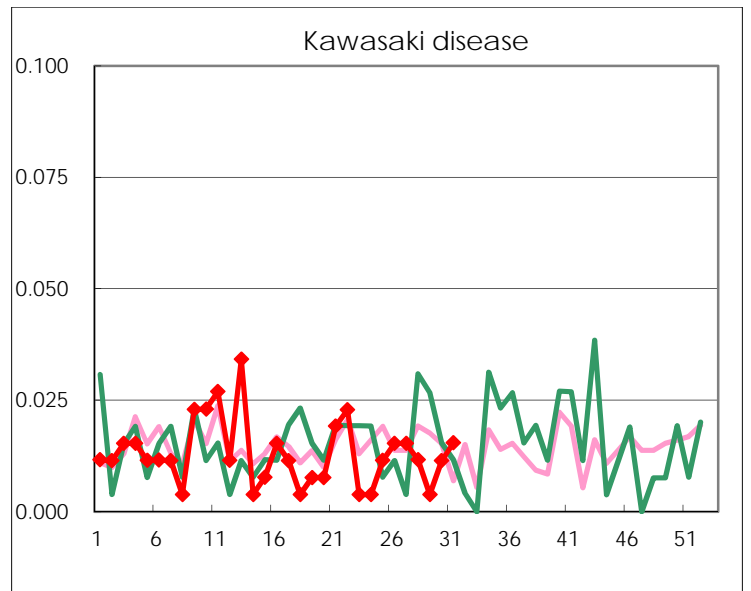
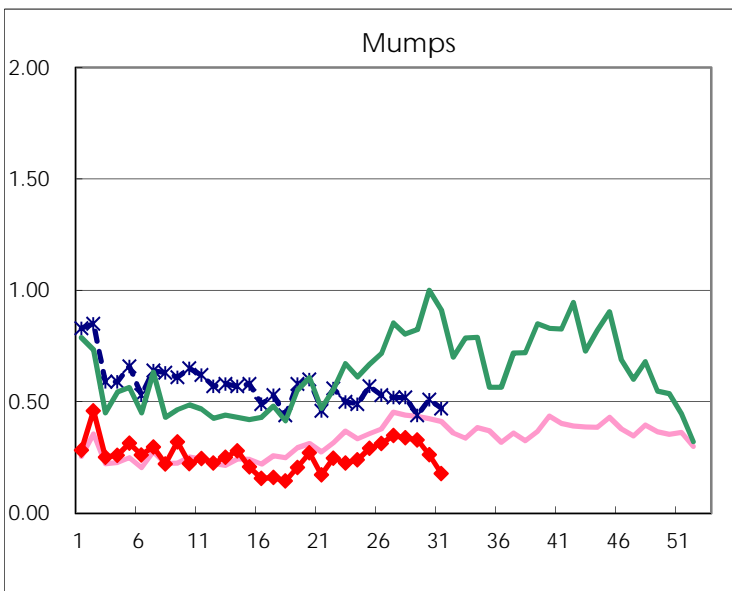
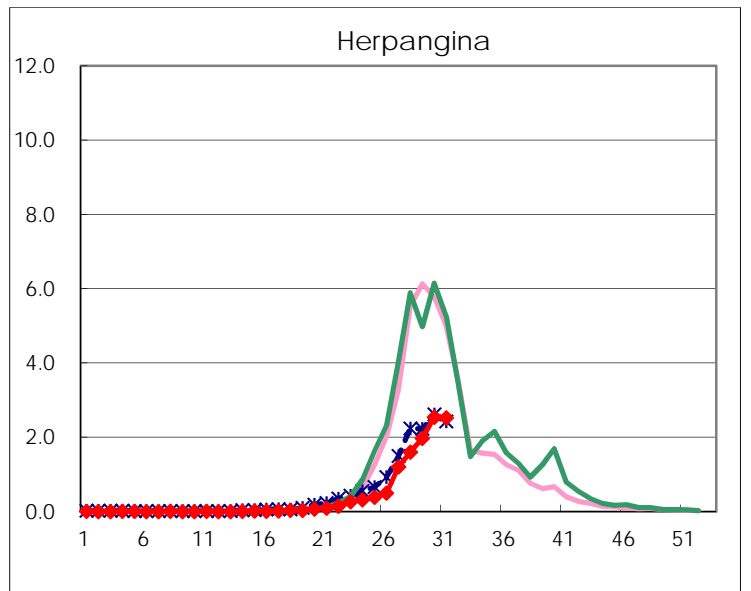
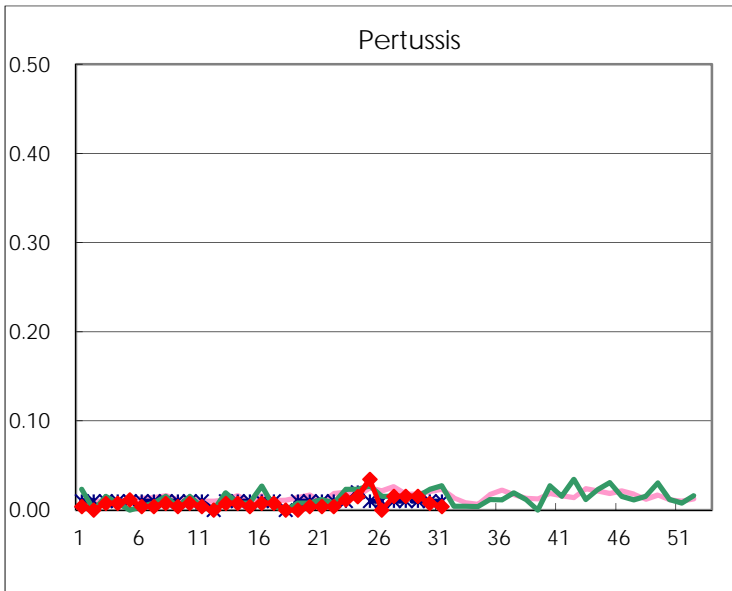
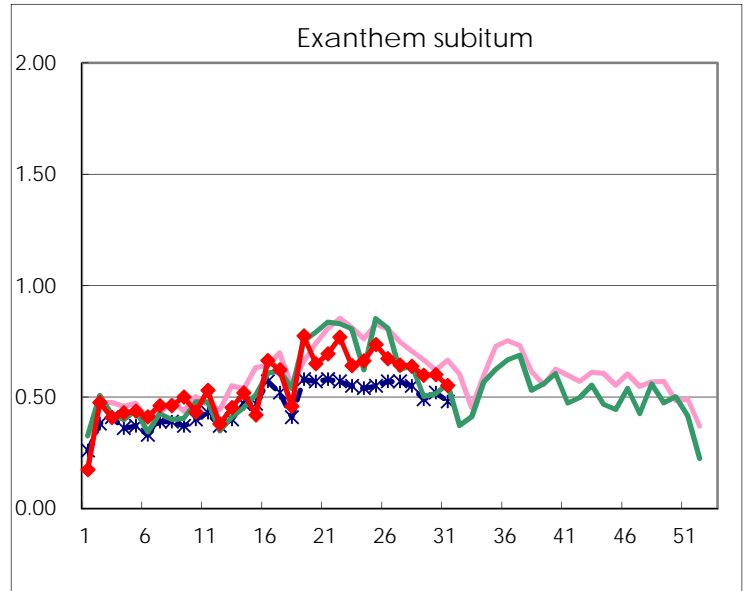
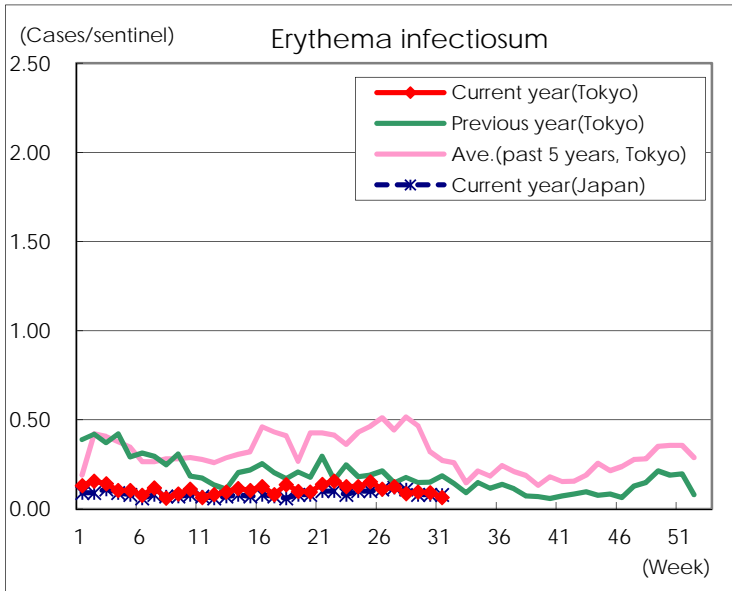
Number of patients with the diseases to be reported
by the designated clinics and hospitals

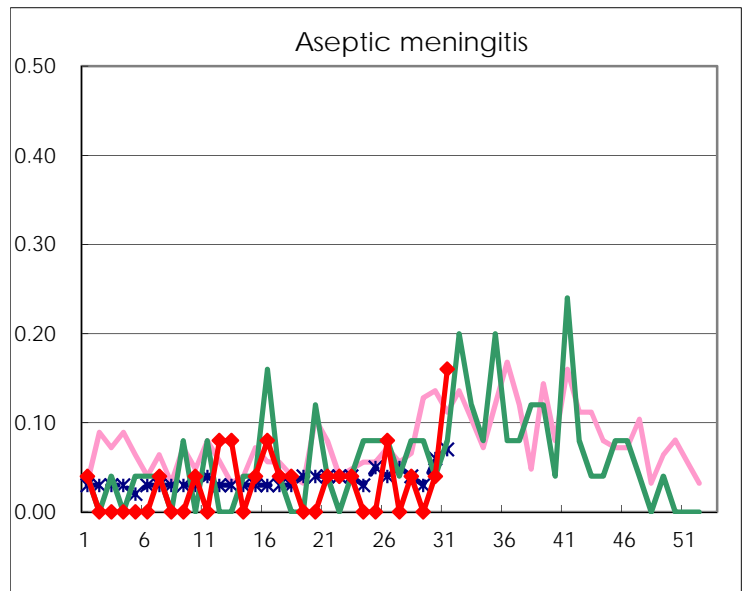
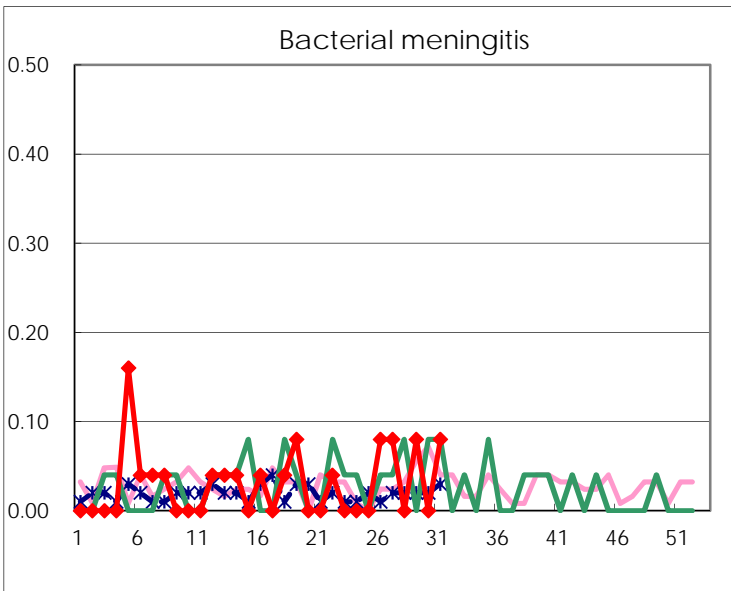
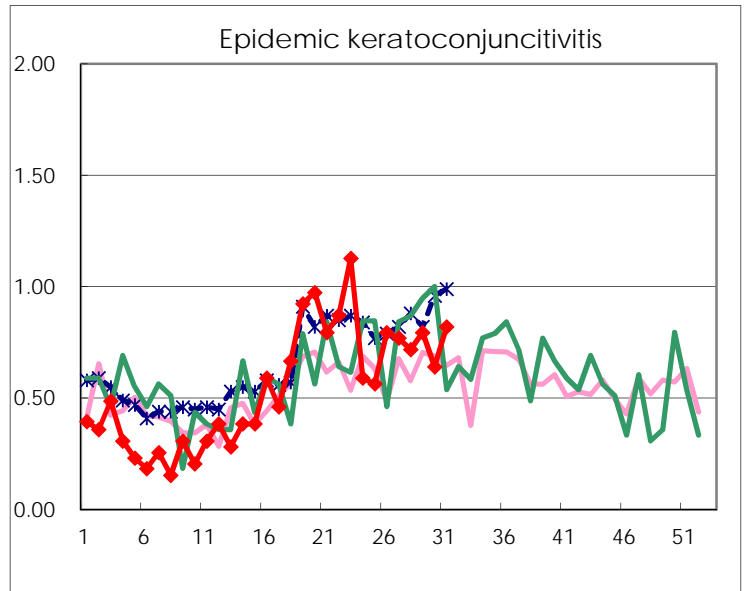
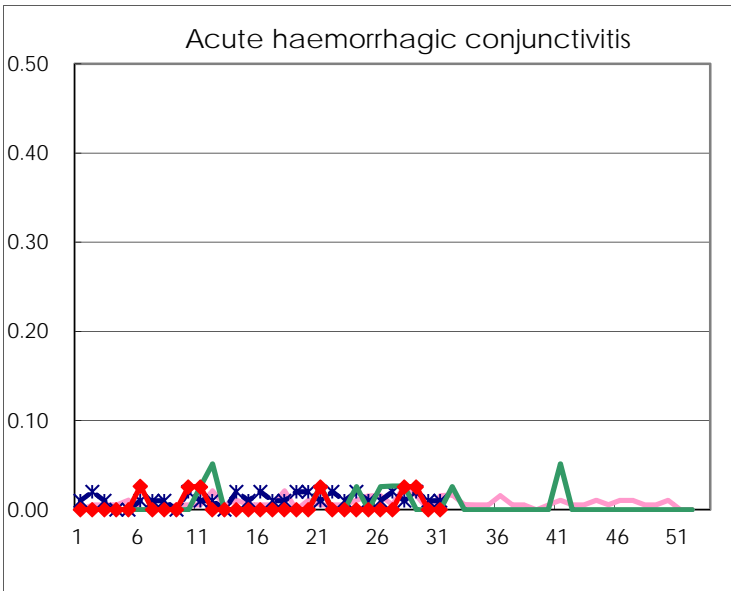
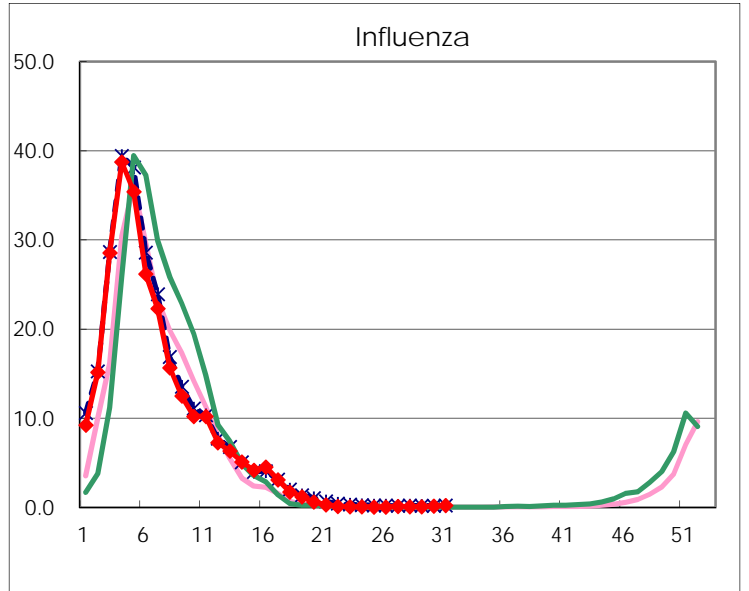
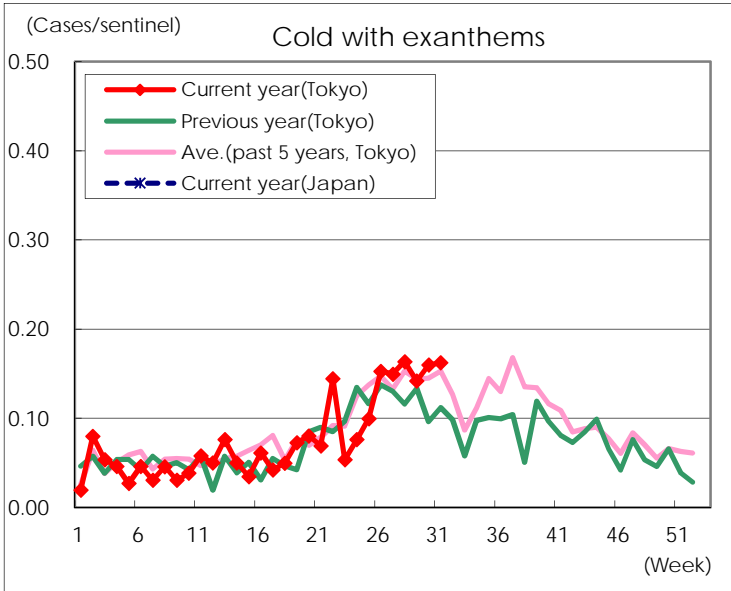
Diseases	Tokyo				
	28th	29th	30th	31st	/sentinel
Respiratory syncytial virus infection	178	223	405	583	2.25
Pharyngoconjunctival fever	266	245	295	244	0.94
Group A streptococcal pharyngitis	653	484	455	402	1.55
Infectious gastroenteritis	1,432	1,080	1,089	1,020	3.94
Chickenpox	87	74	75	64	0.25
Hand, foot, and mouth disease	1,764	2,301	2,853	3,066	11.84
Erythema infectiosum	22	25	24	17	0.07
Exanthem subitum	164	156	158	143	0.55
Pertussis	4	4	2	1	
Herpangina	412	516	669	653	2.52
Mumps	87	86	69	46	0.18
Kawasaki disease	3	1	3	4	0.02
Cold with exanthems	42	37	42	42	0.16
Influenza	31	38	60	95	0.23
Acute hemorrhagic conjunctivitis	1	1			
Epidemic keratoconjunctivitis	28	31	25	32	0.82
Bacterial meningitis		2		2	0.08
Aseptic meningitis	1		1	4	0.16
Mycoplasma pneumonia	4	2	3	2	0.08
Chlamydial pneumonia (excluding psittacosis)					
Infectious gastroenteritis (only by Rotavirus)	1				
Influenza-Associated Hospitalizations		2	2	2	0.08

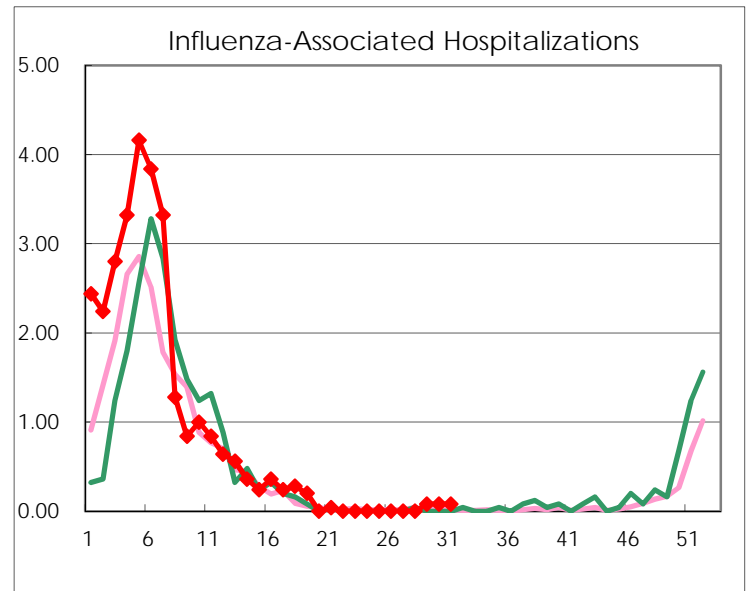
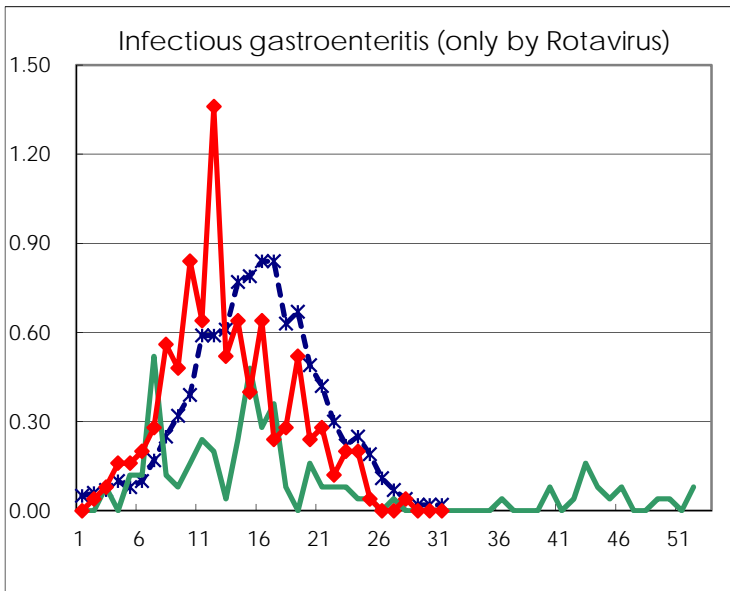
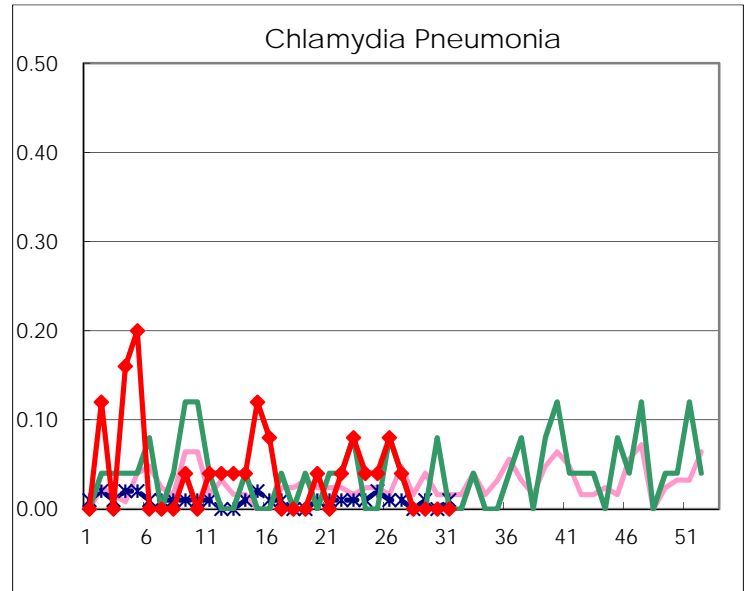
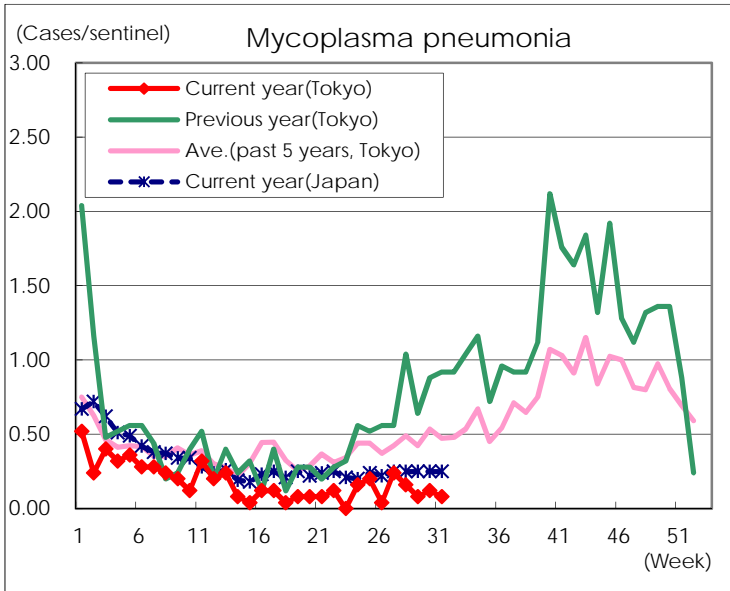
(Blank means 0.)

Disease Trend Graph (weekly reported cases per sentinel in comparison)









Number of sentinel facilities for weekly reporting		
Types of sentinels	Number of sentinels	Sentinels having reported
Pediatric	264	259
Influenza	419	409
Ophthalmic	39	39
Specially-designated	25	25