

17 August 2017 / Number 32

Surveillance System in Tokyo, Japan

The infectious diseases which all physicians must report

All physicians must report to health centers the incidence of the diseases which are shown at page one. Health centers electronically report the individual cases to Tokyo Metropolitan Infectious Disease Surveillance Center.

The infectious diseases required to be reported by the sentinels

The numbers of patients who visit the sentinel clinics or hospitals during a week are reported to health centers in Tokyo. And they electronically report the numbers to Tokyo Metropolitan Infectious Disease Surveillance Center. We have about 500 sentinel clinics and hospitals in Tokyo.

Tokyo Metropolitan Institute of Public Health

TEL:81-3-3363-3213 FAX:81-3-5332-7365

e-mail:www@tokyo-eiken.go.jp

URL:idsc.tokyo-eiken.go.jp/

Number of patients with the diseases which all physicians must report

Category	Diseases	Tokyo					Japan	
		29th	30th	31st	32nd	Cum 2017	32nd	Cum 2017
I	Ebola hemorrhagic fever							
	Crimean-Congo hemorrhagic fever							
	Smallpox							
	South American hemorrhagic fever							
	Plague							
	Marburg disease							
	Lassa fever							
II	Acute poliomyelitis							
	Tuberculosis	45	60	64	50	2,034	305	13,696
	Diphtheria							
	Severe Acute Respiratory Syndrome(SARS)							
	Middle East Respiratory Syndrome (MERS)							
	Avian influenza H5N1							
	Avian influenza H7N9							
III	Cholera					1		4
	Shigellosis	2	1	2		24		93
	Enterohemorrhagic Escherichia coli infection	9	19	18	57	182	228	1,696
	Typhoid fever				1	7	2	24
	Paratyphoid fever				1	5	1	10
IV	Hepatitis E	1		2	1	41	5	210
	West Nile fever							
	Hepatitis A			1		50		185
	Echinococcosis					1		19
	Yellow fever							
	Psittacosis							10
	Omsk hemorrhagic fever							
	Relapsing fever					1		3
	Kyasanur forest disease							
	Q fever							
	Rabies							
	Coccidioidomycosis			1		1		1
	Monkeypox							
	Zika virus infection							2
	Severe Fever with Thrombocytopenia Syndrome							63
	Hemorrhagic fever with renal syndrome							
	Western equine encephalitis							
	Tick-borne encephalitis						1	2
	Anthrax							
	Chikungunya fever					2		2
	Scrub typhus(Tsutsugamushi disease)			1		3		102
	Dengue fever	1	2	3	2	36	8	124
	Eastern equine encephalitis							
	Avian influenza (excluding H5N1 and H7N9)							
	Nipah virus infection							
	Japanese spotted fever						5	153
	Japanese encephalitis							
	Hantavirus pulmonary syndrome							
	Herpes B virus infection							
	Glanders							
	Brucellosis							1
	Venezuelan equine encephalitis							
Hendra virus infection								
Epidemic typhus								
Botulism					1		3	
Malaria	1	1		3	14	1	30	
Tularemia								
Lyme disease					1	1	14	
Lyssavirus infection(excluding rabies)								
Rift valley fever								
Melioidosis					1		1	
Legionellosis	5	4		6	83	35	945	
Leptospirosis					3	1	11	
Rocky mountain spotted fever								

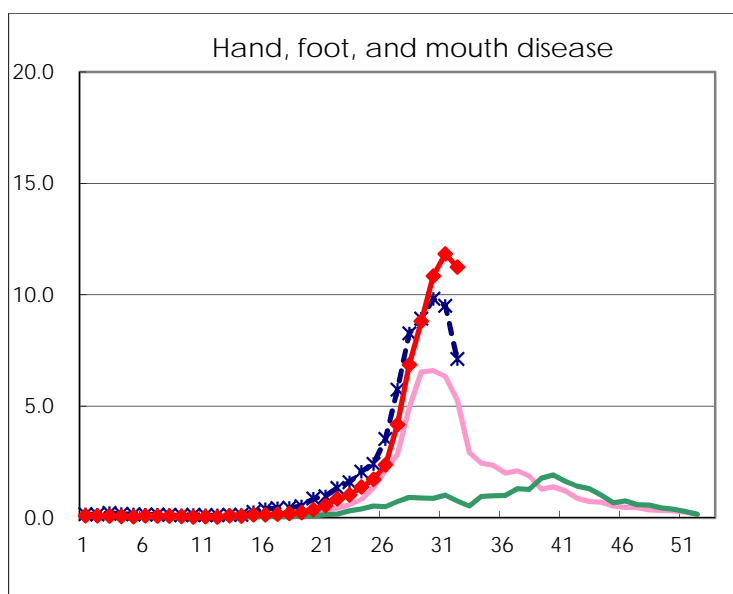
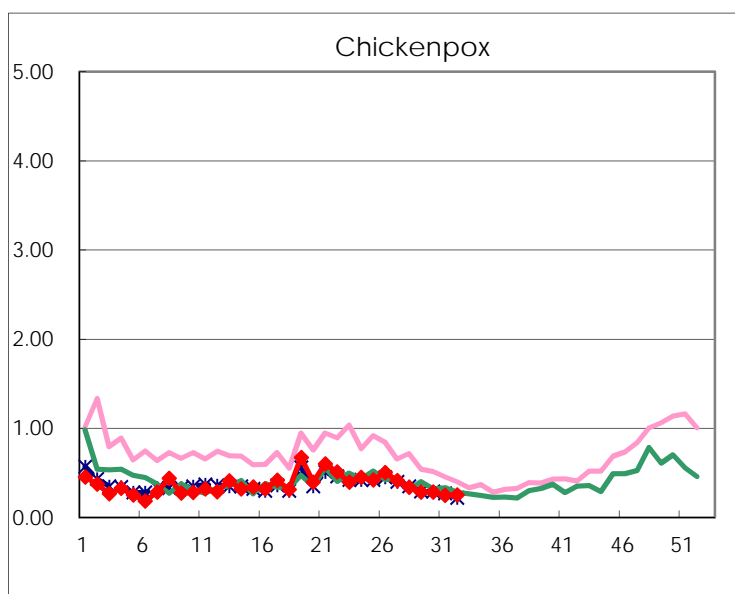
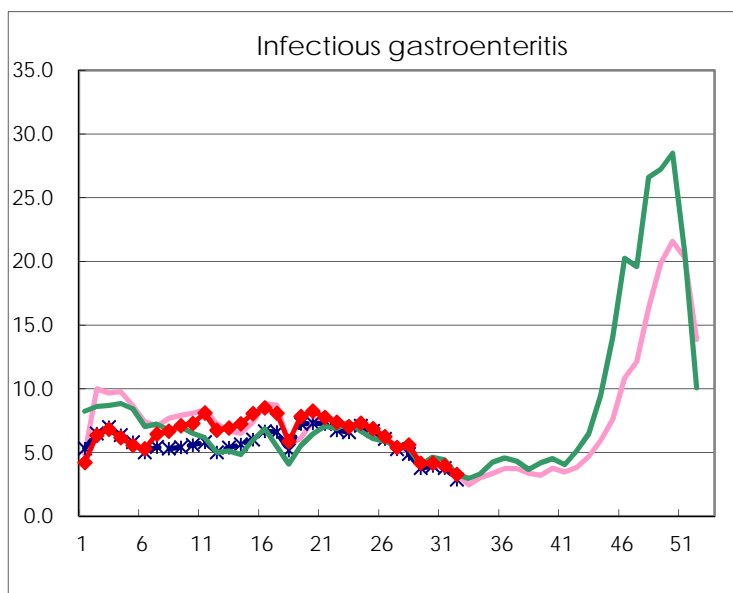
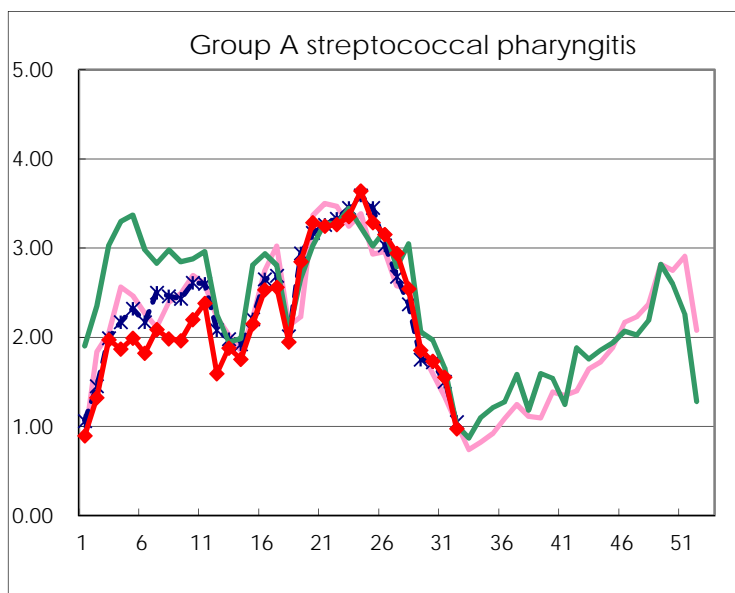
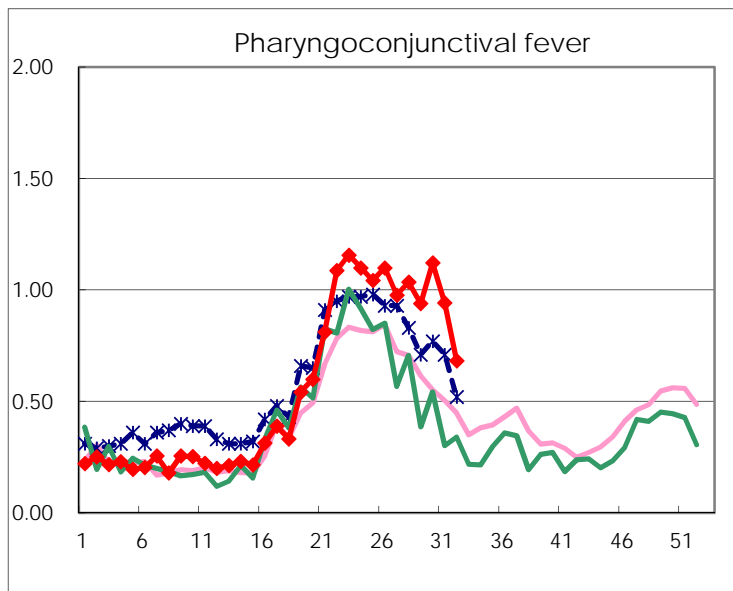
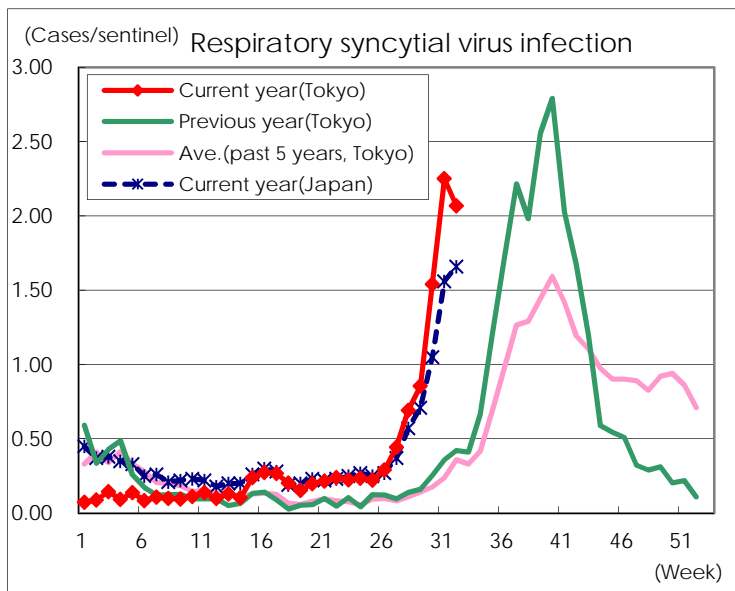
Category	Diseases	Tokyo					Japan	
		29th	30th	31st	32nd	Cum 2017	32nd	Cum 2017
V	Amebiasis	4	7	1	3	130	6	661
	Viral hepatitis(excluding hepatitis A and E)		1	2	1	37	1	176
	CRE infection	4	5	6	3	125	22	941
	Acute encephalitis(excluding JE and WNE)	1	3	1	1	44	8	452
	Cryptosporidiosis							8
	Creutzfeldt-Jakob disease	2				10	2	121
	Severe invasive streptococcal infections(TSLS)	1	1	2		50	9	350
	Acquired immunodeficiency syndrome (AIDS)	10	15	7	9	290	14	848
	Giardiasis		1		1	17	2	39
	Invasive <i>Haemophilus influenzae</i> disease	3	1	2	1	37	3	244
	Invasive meningococcal disease					2		16
	Invasive pneumococcal disease	2	4	5	1	289	20	2,194
	Varicella (limited to hospitalized case)	2	1		1	33	2	193
	Congenital rubella syndrome							
	Syphilis	27	42	49	27	1,067	46	3,336
	Disseminated cryptococcosis					10		81
	Tetanus			1		3	1	70
	Vancomycin-resistant <i>S. aureus</i> infection							
	Vancomycin-resistant Enterococcus infection					6		54
	Rubella					13	1	56
Measles			1	3	23	3	172	
MDRA infection					1	1	15	

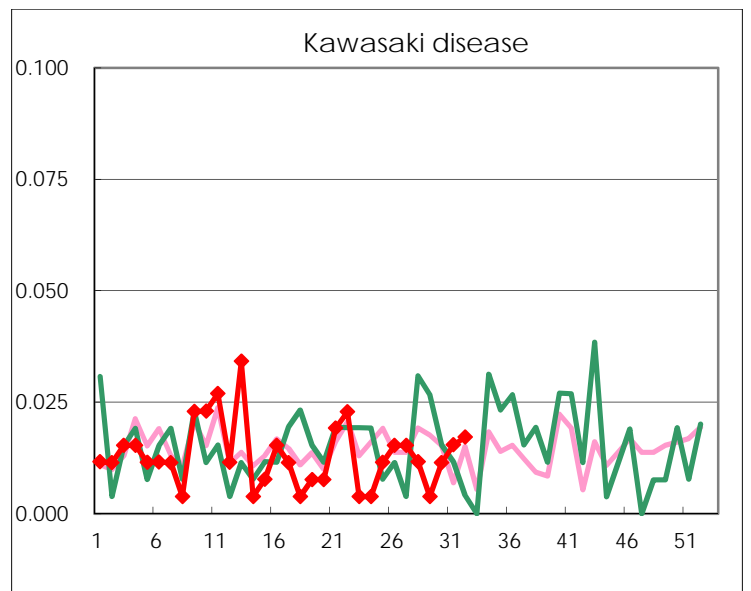
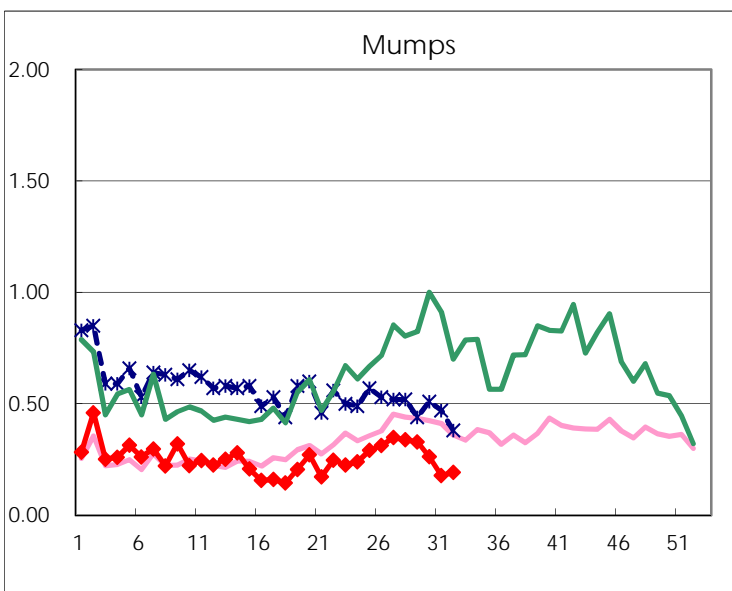
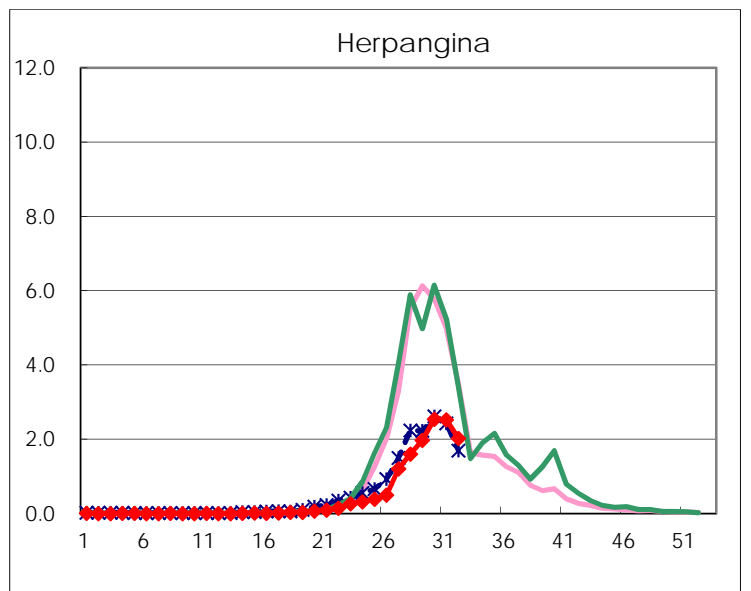
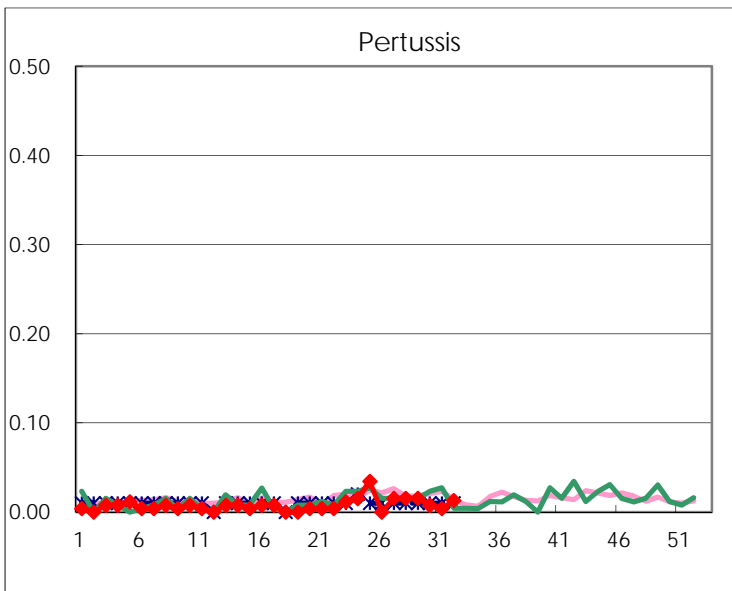
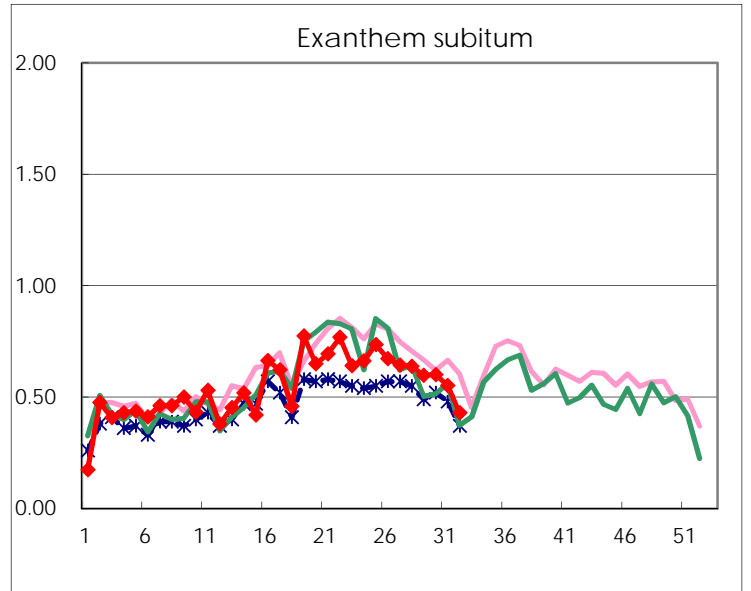
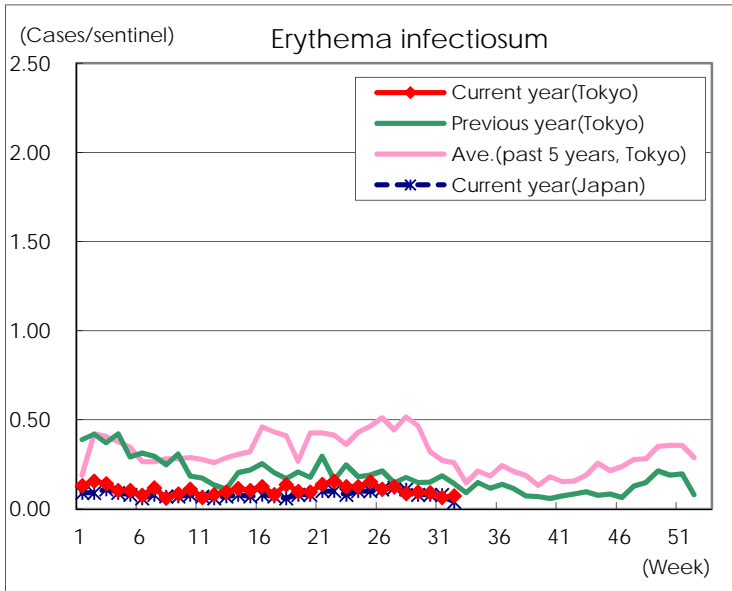
Number of patients with the diseases to be reported
by the designated clinics and hospitals

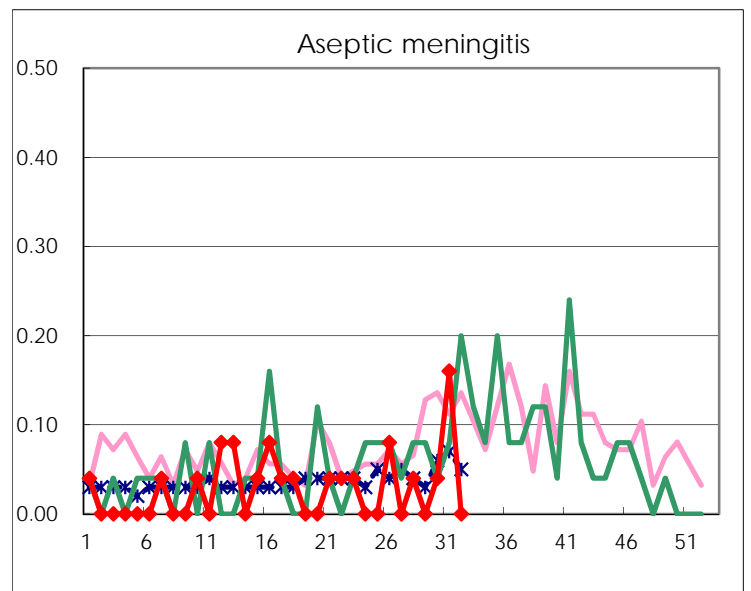
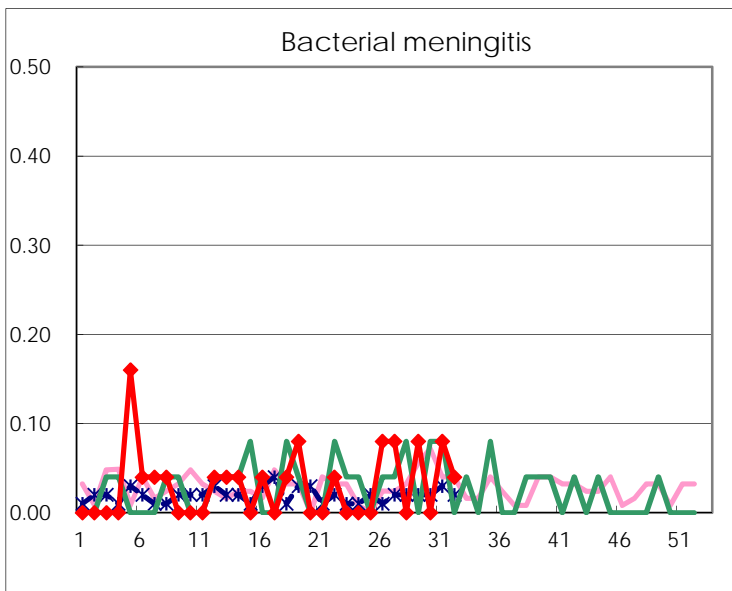
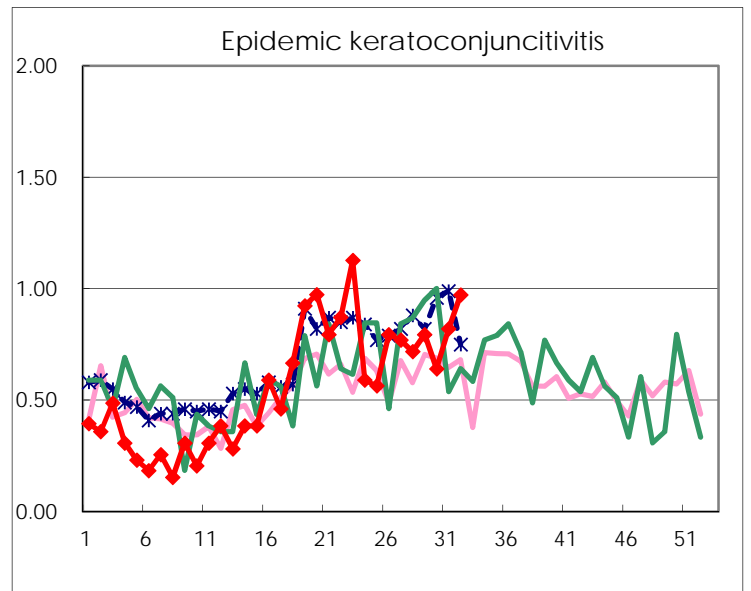
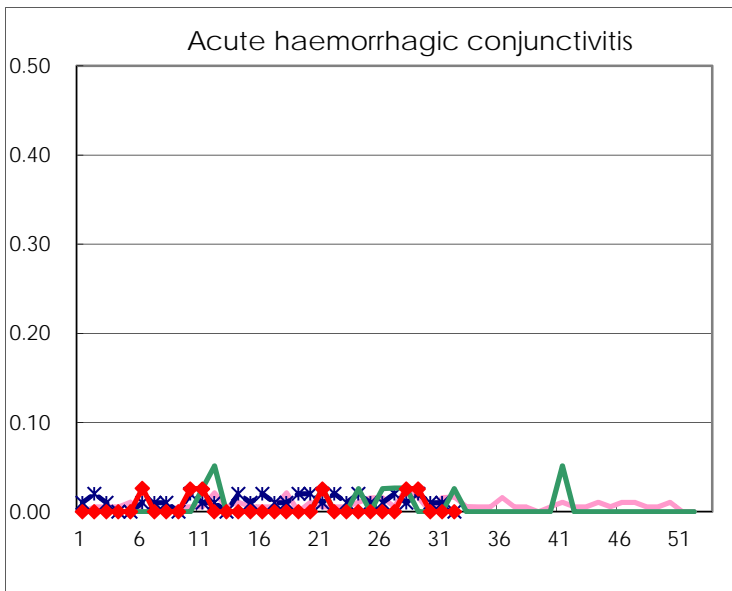
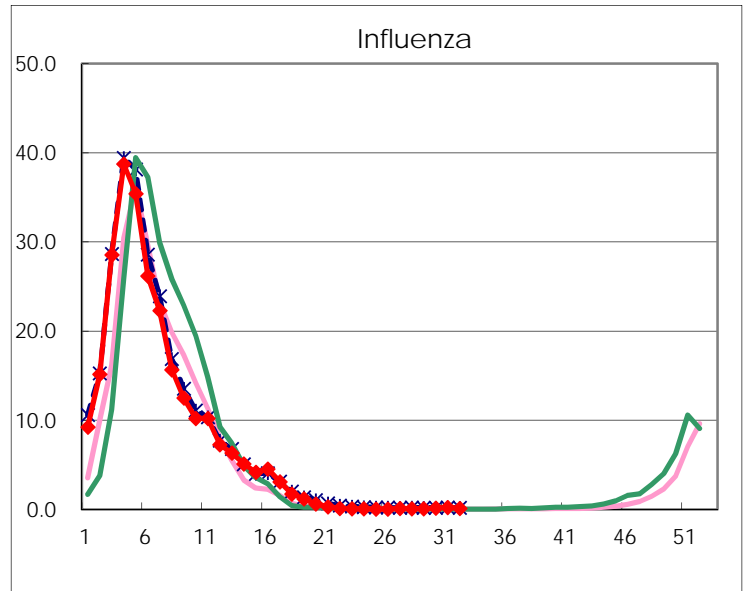
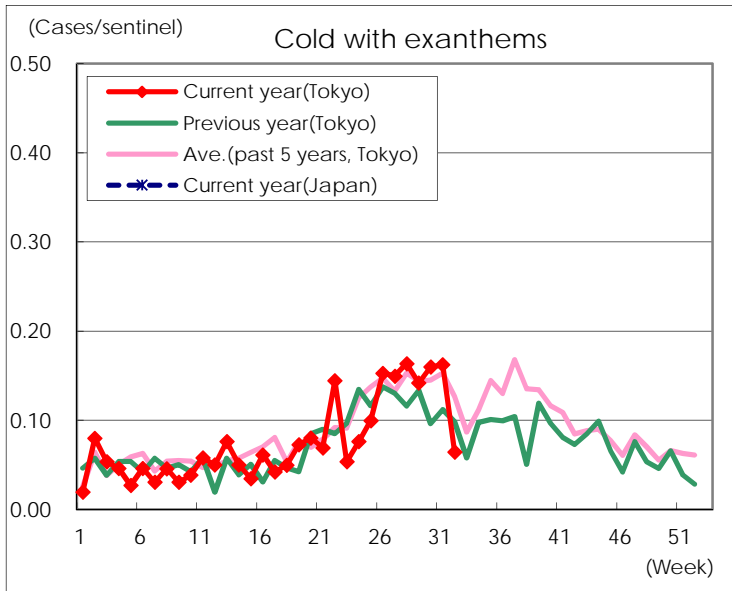
Diseases	Tokyo				
	29th	30th	31st	32nd	/sentinel
Respiratory syncytial virus infection	223	405	583	482	2.07
Pharyngoconjunctival fever	245	295	244	159	0.68
Group A streptococcal pharyngitis	484	455	402	227	0.97
Infectious gastroenteritis	1,080	1,089	1,020	762	3.27
Chickenpox	74	75	64	59	0.25
Hand, foot, and mouth disease	2,301	2,853	3,066	2,620	11.24
Erythema infectiosum	25	24	17	17	0.07
Exanthem subitum	156	158	143	100	0.43
Pertussis	4	2	1	3	0.01
Herpangina	516	669	653	472	2.03
Mumps	86	69	46	45	0.19
Kawasaki disease	1	3	4	4	0.02
Cold with exanthems	37	42	42	15	0.06
Influenza	38	60	95	35	0.10
Acute hemorrhagic conjunctivitis	1				
Epidemic keratoconjunctivitis	31	25	32	35	0.97
Bacterial meningitis	2		2	1	0.04
Aseptic meningitis		1	4		
Mycoplasma pneumonia	2	3	2		
Chlamydial pneumonia (excluding psittacosis)					
Infectious gastroenteritis (only by Rotavirus)					
Influenza-Associated Hospitalizations	2	2	2	4	0.16

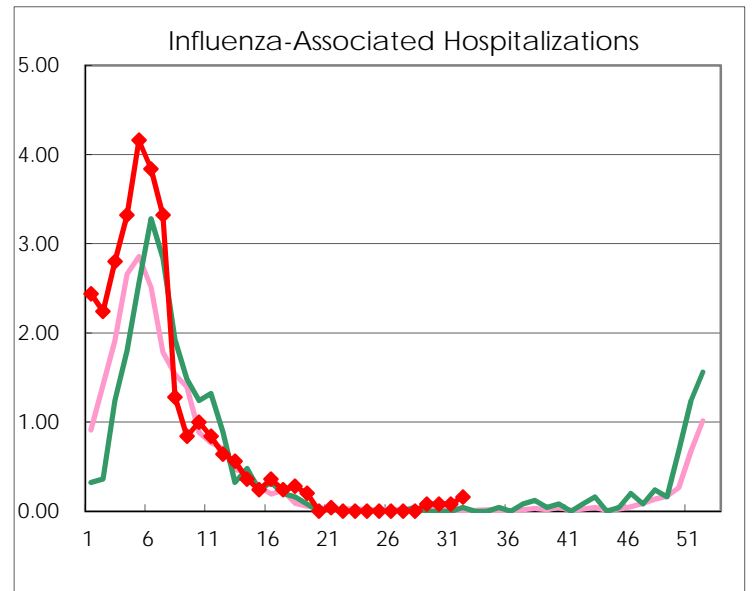
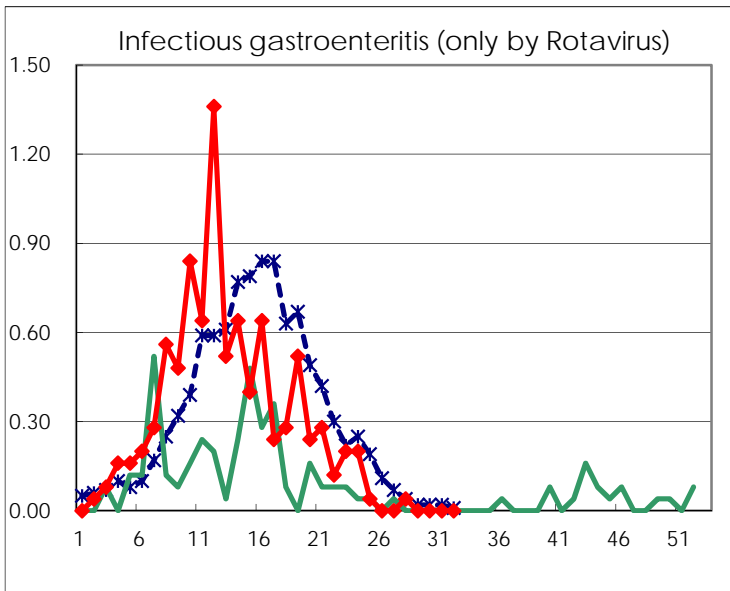
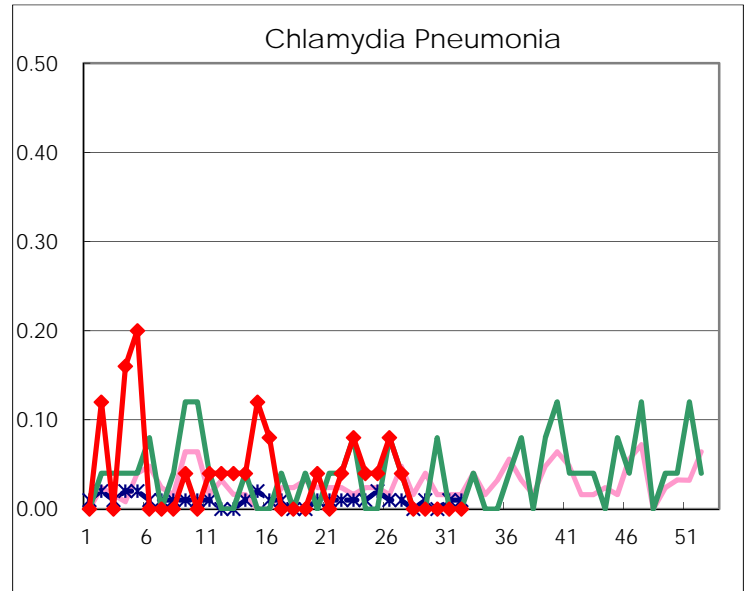
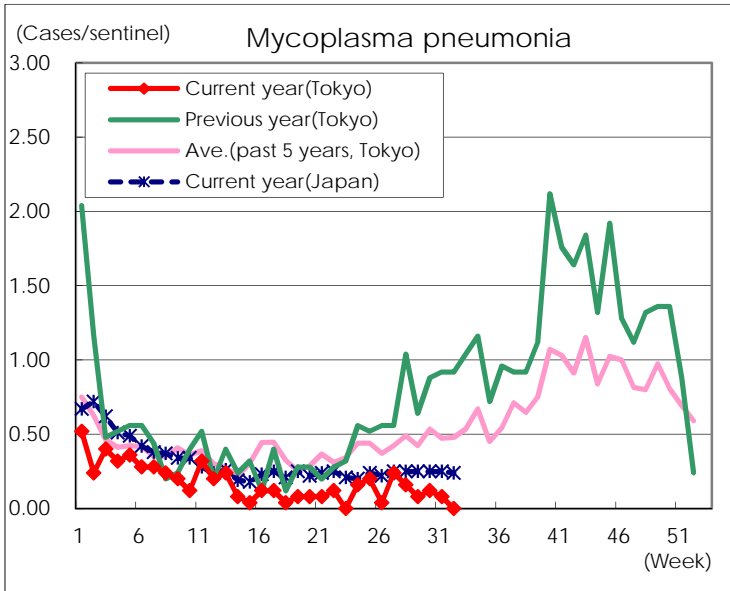
(Blank means 0.)

Disease Trend Graph (weekly reported cases per sentinel in comparison)









Number of sentinel facilities for weekly reporting		
Types of sentinels	Number of sentinels	Sentinels having reported
Pediatric	264	233
Influenza	419	355
Ophthalmic	39	36
Specially-designated	25	25