

31 August 2017 / Number 34

Surveillance System in Tokyo, Japan

The infectious diseases which all physicians must report

All physicians must report to health centers the incidence of the diseases which are shown at page one. Health centers electronically report the individual cases to Tokyo Metropolitan Infectious Disease Surveillance Center.

The infectious diseases required to be reported by the sentinels

The numbers of patients who visit the sentinel clinics or hospitals during a week are reported to health centers in Tokyo. And they electronically report the numbers to Tokyo Metropolitan Infectious Disease Surveillance Center. We have about 500 sentinel clinics and hospitals in Tokyo.

Tokyo Metropolitan Institute of Public Health

TEL:81-3-3363-3213 FAX:81-3-5332-7365

e-mail:www@tokyo-eiken.go.jp

URL:idsc.tokyo-eiken.go.jp/

Number of patients with the diseases which all physicians must report

Category	Diseases	Tokyo					Japan	
		31st	32nd	33rd	34th	Cum 2017	34th	Cum 2017
I	Ebola hemorrhagic fever							
	Crimean-Congo hemorrhagic fever							
	Smallpox							
	South American hemorrhagic fever							
	Plague							
	Marburg disease							
	Lassa fever							
II	Acute poliomyelitis							
	Tuberculosis	71	58	61	55	2,172	339	14,570
	Diphtheria							
	Severe Acute Respiratory Syndrome(SARS)							
	Middle East Respiratory Syndrome (MERS)							
	Avian influenza H5N1							
	Avian influenza H7N9							
III	Cholera					1		4
	Shigellosis	2				24	3	97
	Enterohemorrhagic Escherichia coli infection	18	58	71	36	290	274	2,310
	Typhoid fever		1			7	1	25
	Paratyphoid fever		1			5		10
IV	Hepatitis E	2	1		2	43	6	221
	West Nile fever							
	Hepatitis A	1		2		52	3	192
	Echinococcosis					1		19
	Yellow fever							
	Psittacosis							10
	Omsk hemorrhagic fever							
	Relapsing fever					1		3
	Kyasanur forest disease							
	Q fever							
	Rabies							
	Coccidioidomycosis	1				1		1
	Monkeypox							
	Zika virus infection							2
	Severe Fever with Thrombocytopenia Syndrome						3	69
	Hemorrhagic fever with renal syndrome							
	Western equine encephalitis							
	Tick-borne encephalitis							2
	Anthrax							
	Chikungunya fever					2		2
	Scrub typhus(Tsutsugamushi disease)	1				3	1	104
	Dengue fever	3	2	2	5	43	15	145
	Eastern equine encephalitis							
	Avian influenza (excluding H5N1 and H7N9)							
	Nipah virus infection							
	Japanese spotted fever				1	1	10	178
	Japanese encephalitis							
	Hantavirus pulmonary syndrome							
	Herpes B virus infection							
	Glanders							
	Brucellosis							1
	Venezuelan equine encephalitis							
	Hendra virus infection							
Epidemic typhus								
Botulism					1		3	
Malaria		3		1	15	1	34	
Tularemia								
Lyme disease					1		14	
Lyssavirus infection(excluding rabies)								
Rift valley fever								
Melioidosis					1		1	
Legionellosis		7	4	6	94	43	1,041	
Leptospirosis					3		13	
	Rocky mountain spotted fever							

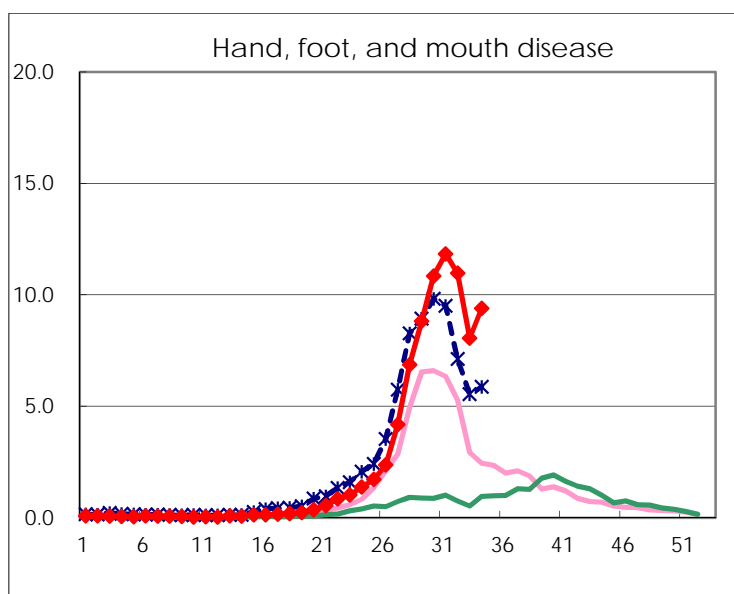
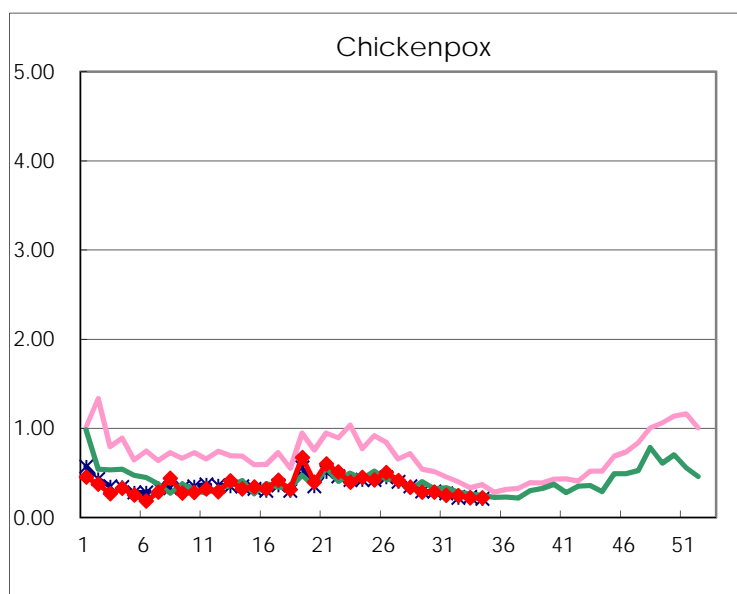
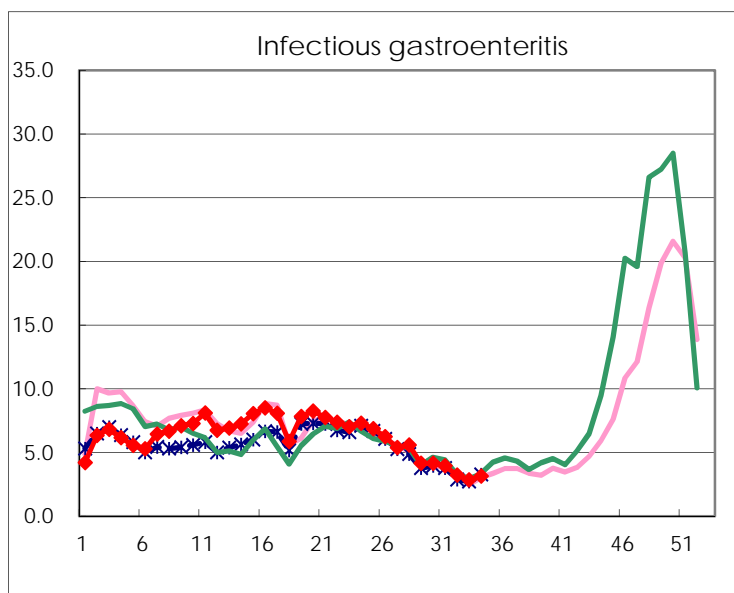
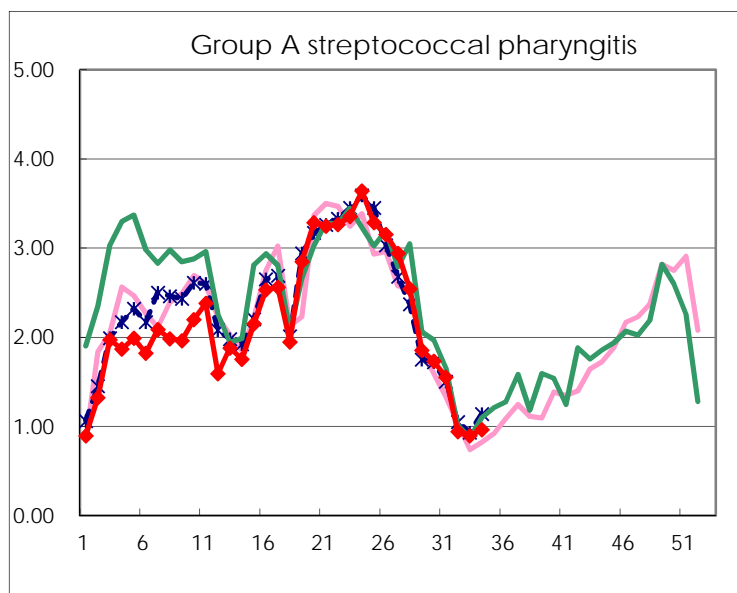
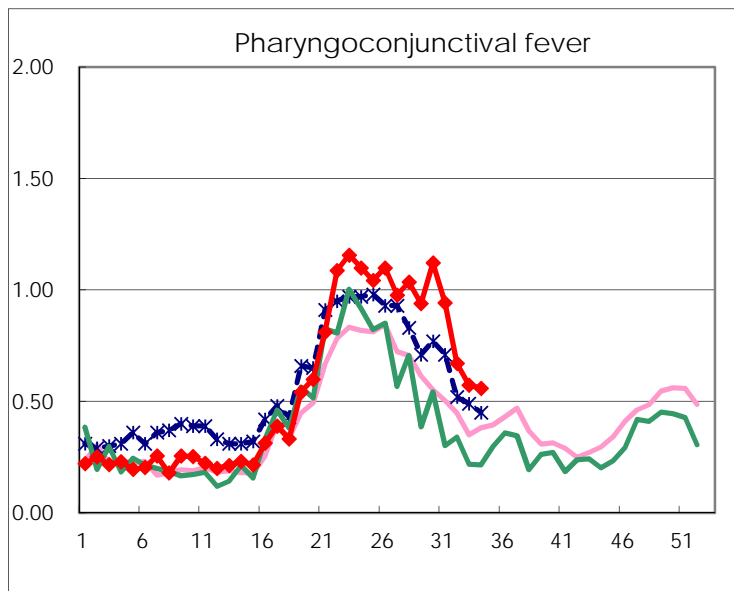
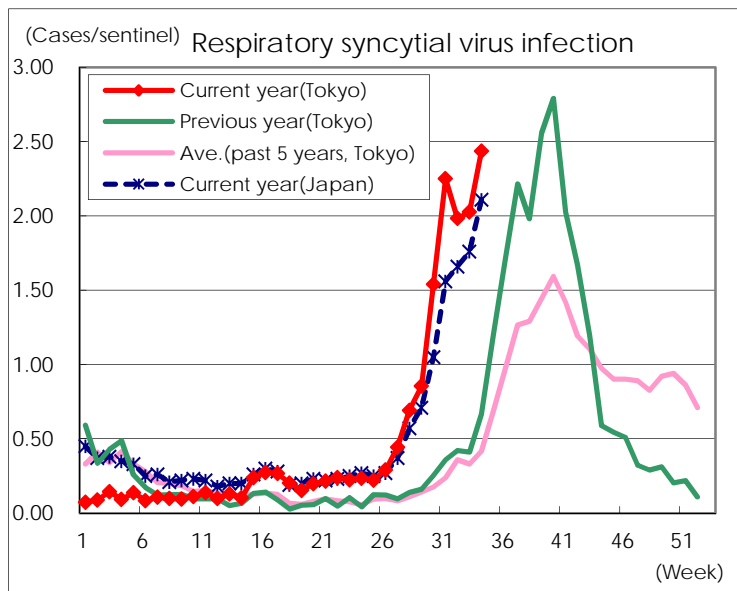
Category	Diseases	Tokyo					Japan	
		31st	32nd	33rd	34th	Cum 2017	34th	Cum 2017
V	Amebiasis	1	3	4	2	136	12	698
	Viral hepatitis(excluding hepatitis A and E)	2	2	1	2	41	2	186
	CRE infection	6	3	5	4	134	25	1,023
	Acute encephalitis(excluding JE and WNE)	1	1		3	47	14	480
	Cryptosporidiosis							8
	Creutzfeldt-Jakob disease			2	1	13	4	132
	Severe invasive streptococcal infections(TSLS)	2		1		51	14	378
	Acquired immunodeficiency syndrome (AIDS)	7	9	10	12	312	19	903
	Giardiasis		1	1	1	19	2	42
	Invasive <i>Haemophilus influenzae</i> disease	2	1	1	1	39	4	259
	Invasive meningococcal disease					2	1	17
	Invasive pneumococcal disease	5	1	2	2	293	23	2,269
	Varicella (limited to hospitalized case)		1	2	1	36	1	202
	Congenital rubella syndrome							
	Syphilis	49	29	39	44	1,152	77	3,571
	Disseminated cryptococcosis					10	4	86
	Tetanus	1				3	1	78
	Vancomycin-resistant <i>S. aureus</i> infection							
	Vancomycin-resistant Enterococcus infection					6		55
	Rubella			2		15	1	61
Measles	1	3	3		26		176	
MDRA infection				1	2		16	

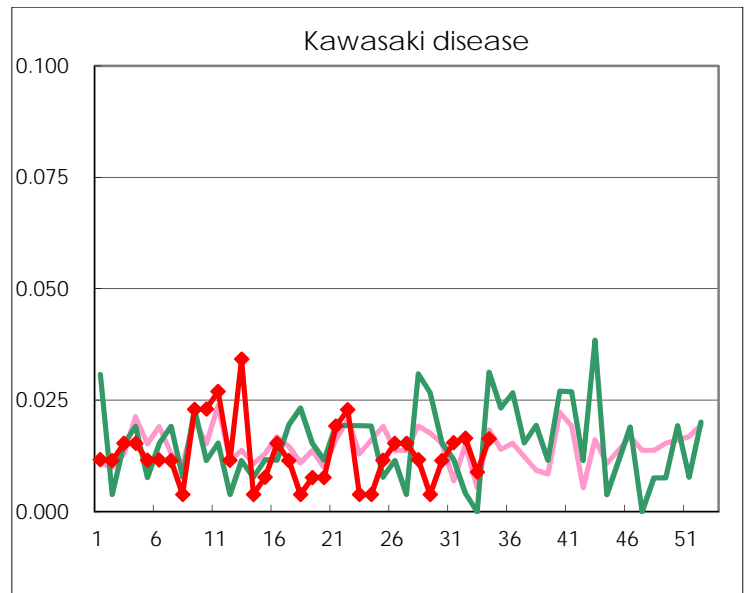
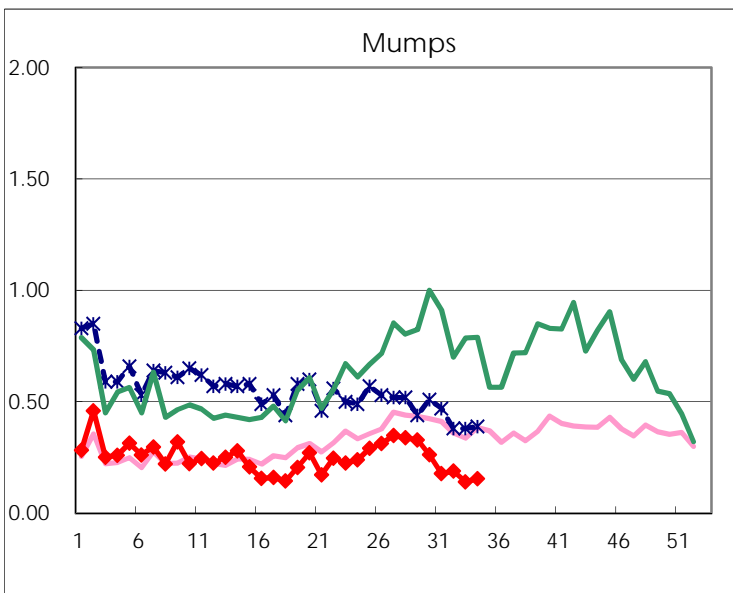
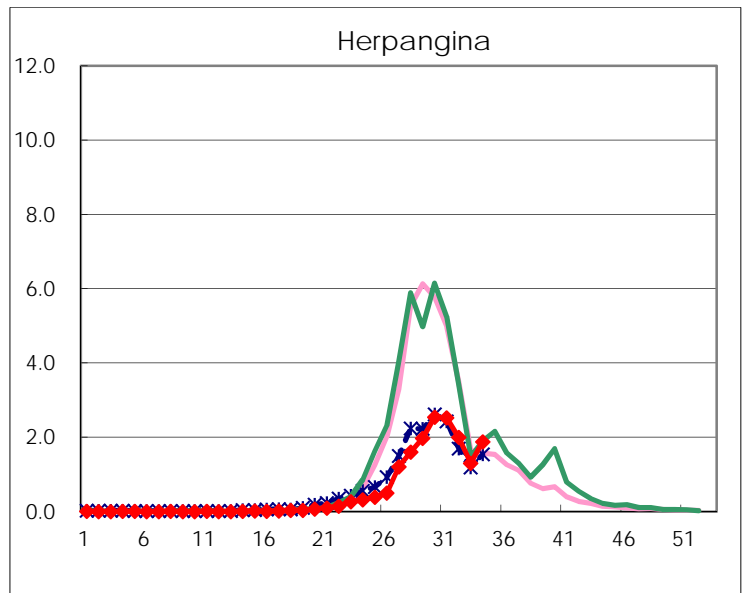
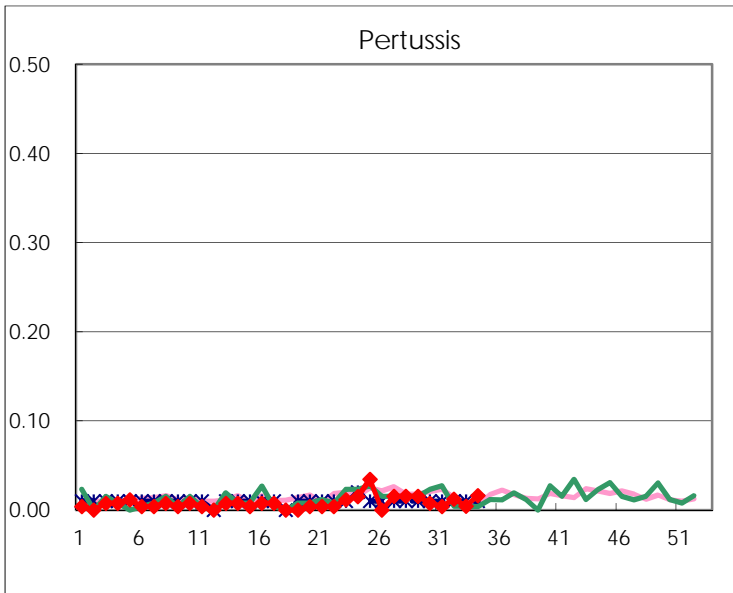
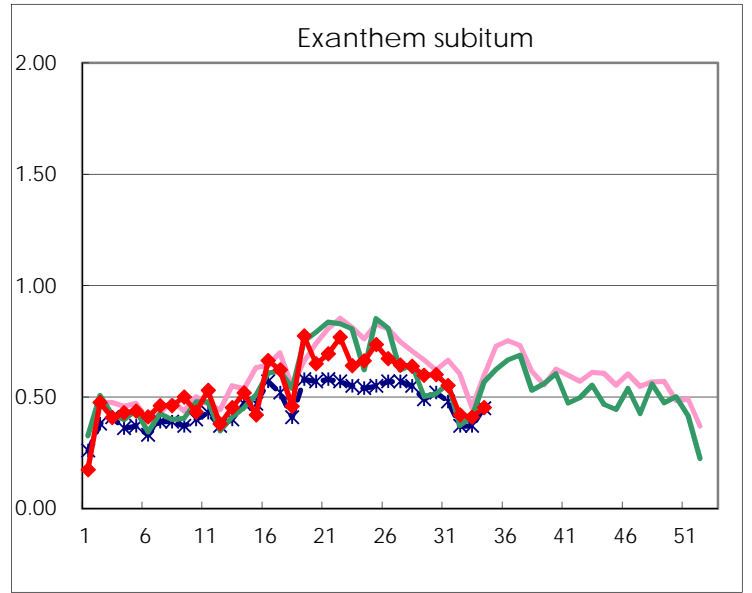
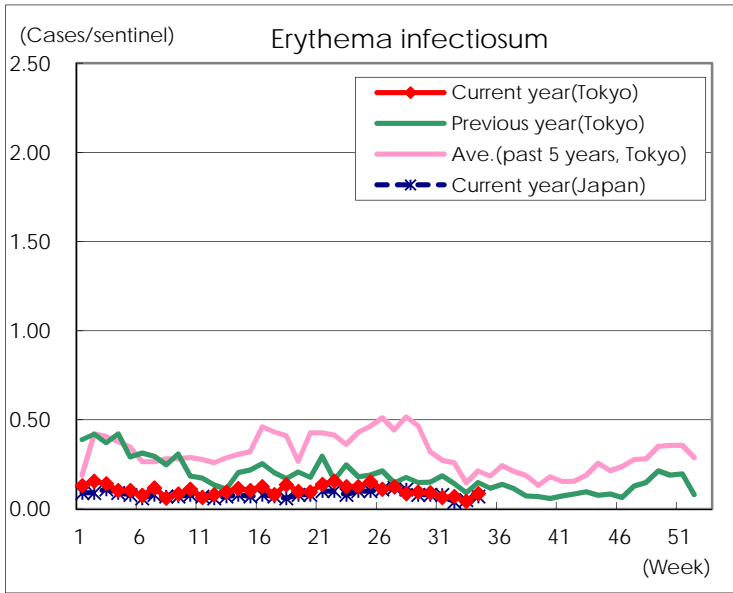
Number of patients with the diseases to be reported
by the designated clinics and hospitals

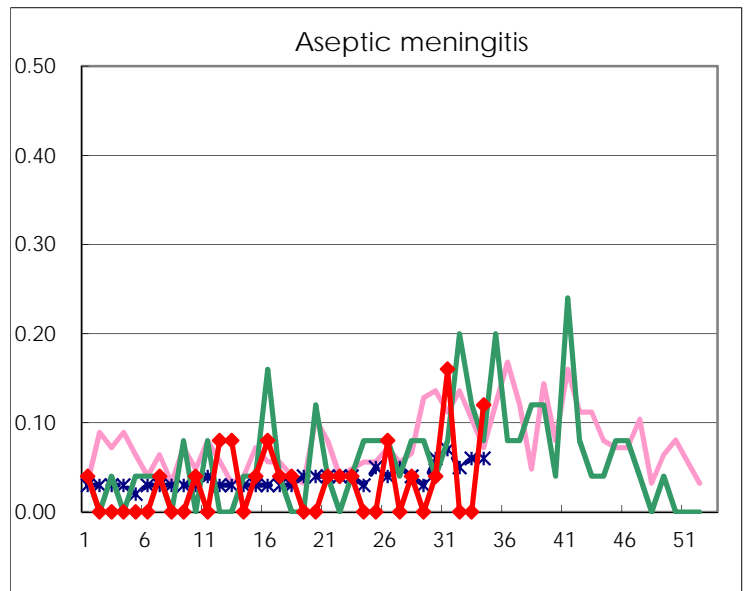
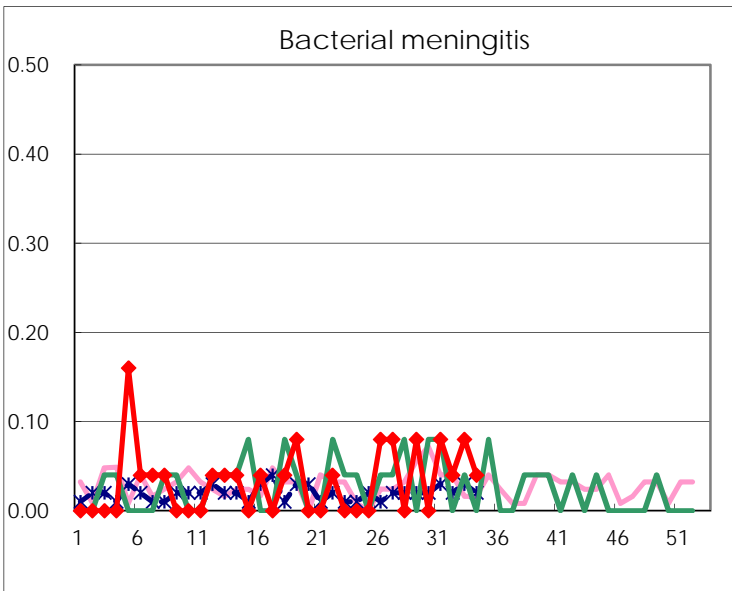
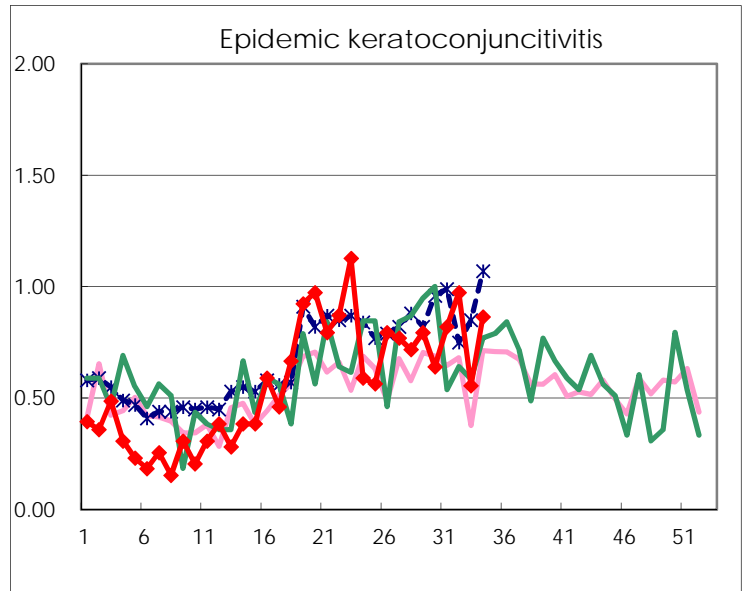
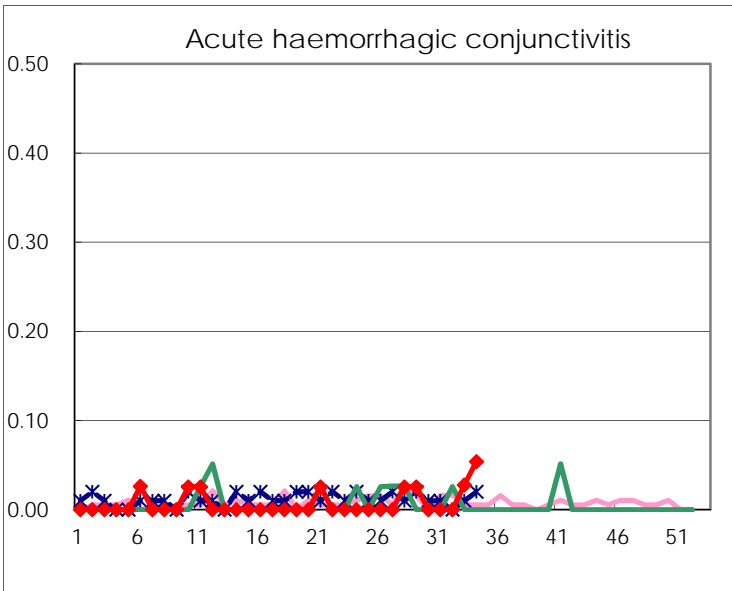
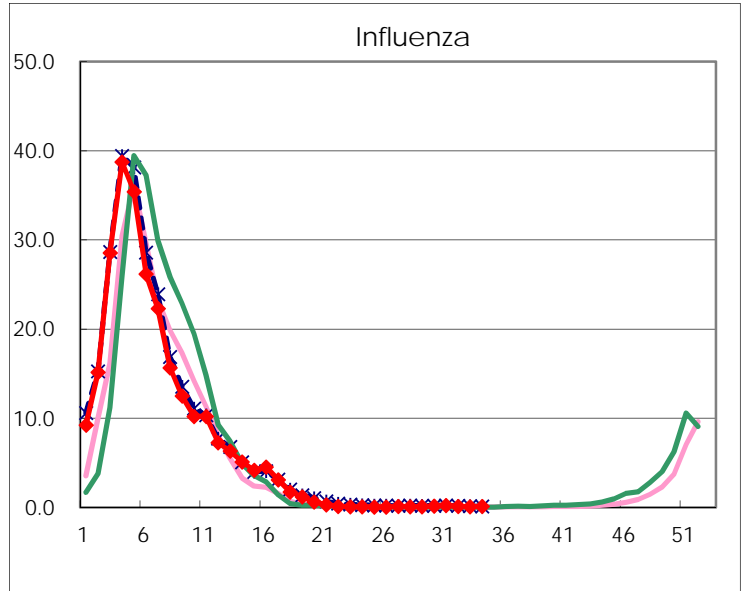
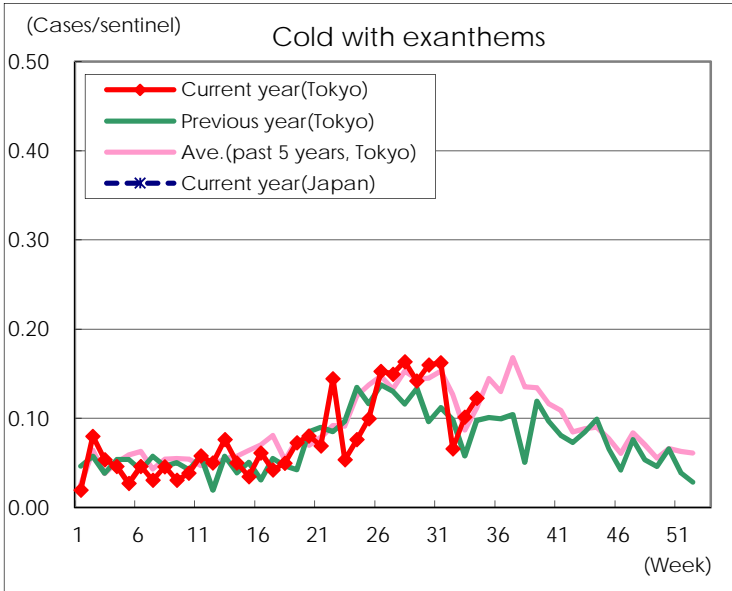
Diseases	Tokyo				
	31st	32nd	33rd	34th	/sentinel
Respiratory syncytial virus infection	583	482	460	597	2.44
Pharyngoconjunctival fever	244	163	130	137	0.56
Group A streptococcal pharyngitis	402	229	203	236	0.96
Infectious gastroenteritis	1,020	780	644	770	3.14
Chickenpox	64	59	50	54	0.22
Hand, foot, and mouth disease	3,066	2,666	1,829	2,301	9.39
Erythema infectiosum	17	17	10	21	0.09
Exanthem subitum	143	102	93	111	0.45
Pertussis	1	3	1	4	0.02
Herpangina	653	485	296	461	1.88
Mumps	46	46	32	38	0.16
Kawasaki disease	4	4	2	4	0.02
Cold with exanthems	42	16	23	30	0.12
Influenza	95	36	29	40	0.10
Acute hemorrhagic conjunctivitis			1	2	0.05
Epidemic keratoconjunctivitis	32	37	20	32	0.86
Bacterial meningitis	2	1	2	1	0.04
Aseptic meningitis	4			3	0.12
Mycoplasma pneumonia	2		3	10	0.40
Chlamydial pneumonia (excluding psittacosis)					
Infectious gastroenteritis (only by Rotavirus)			2		
Influenza-Associated Hospitalizations	2	4	1	7	0.28

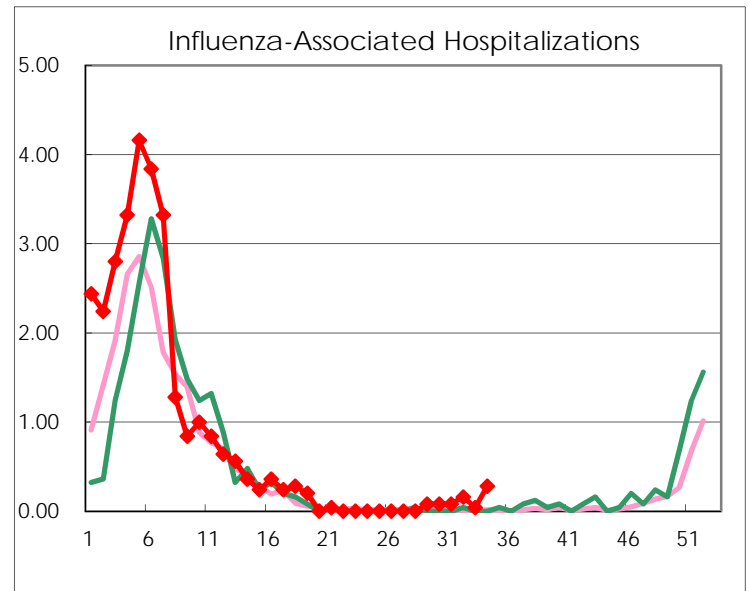
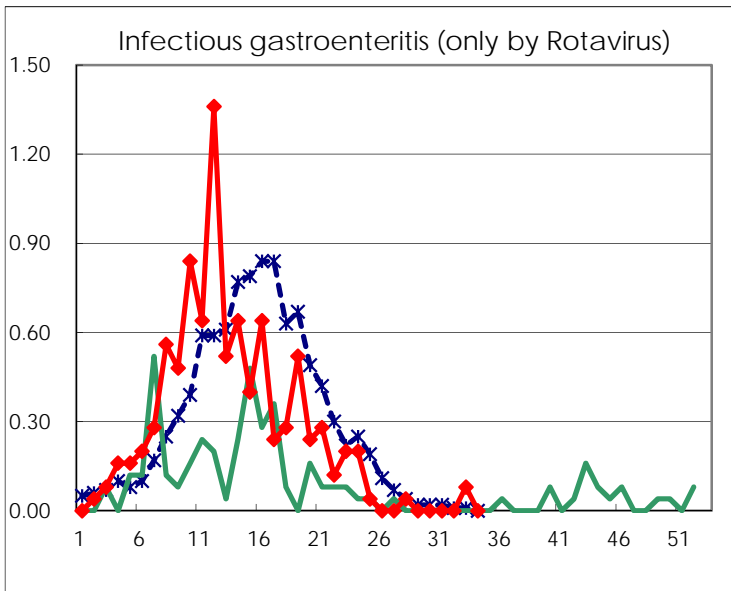
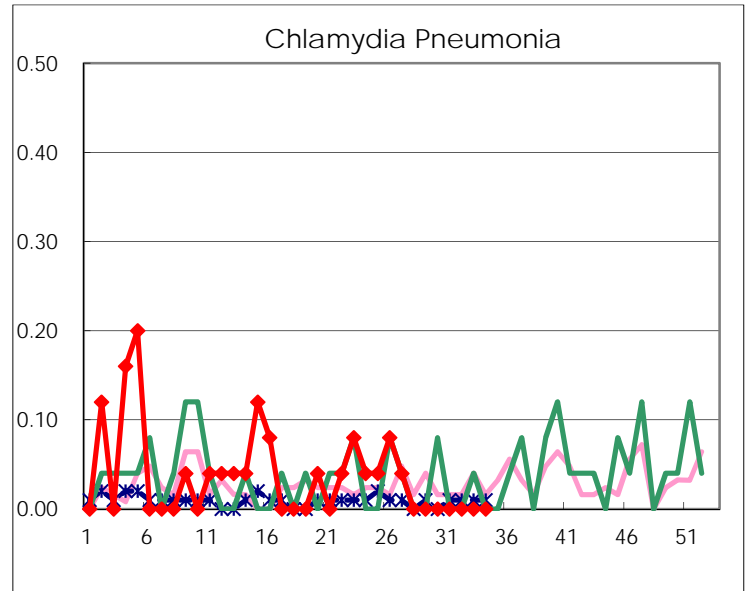
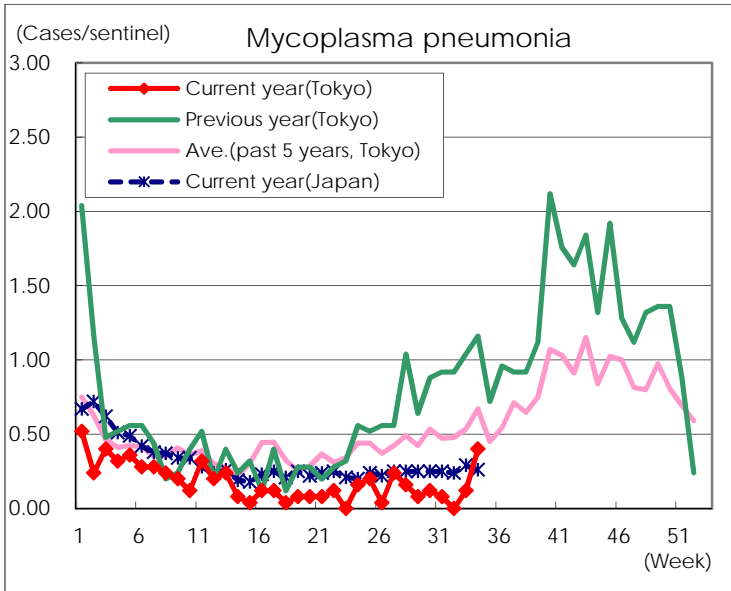
(Blank means 0.)

Disease Trend Graph (weekly reported cases per sentinel in comparison)









Number of sentinel facilities for weekly reporting		
Types of sentinels	Number of sentinels	Sentinels having reported
Pediatric	264	245
Influenza	419	398
Ophthalmic	39	37
Specially-designated	25	25