

**28 September 2017 / Number 38**

## Surveillance System in Tokyo, Japan

The infectious diseases which all physicians must report

All physicians must report to health centers the incidence of the diseases which are shown at page one. Health centers electronically report the individual cases to Tokyo Metropolitan Infectious Disease Surveillance Center.

The infectious diseases required to be reported by the sentinels

The numbers of patients who visit the sentinel clinics or hospitals during a week are reported to health centers in Tokyo. And they electronically report the numbers to Tokyo Metropolitan Infectious Disease Surveillance Center. We have about 500 sentinel clinics and hospitals in Tokyo.

Tokyo Metropolitan Institute of Public Health

TEL:81-3-3363-3213 FAX:81-3-5332-7365

e-mail:[www@tokyo-eiken.go.jp](mailto:www@tokyo-eiken.go.jp)

URL:[idsc.tokyo-eiken.go.jp/](http://idsc.tokyo-eiken.go.jp/)

---

Number of patients with the diseases which all physicians must report

Category	Diseases	Tokyo					Japan	
		35th	36th	37th	38th	Cum 2017	38th	Cum 2017
I	Ebola hemorrhagic fever							
	Crimean-Congo hemorrhagic fever							
	Smallpox							
	South American hemorrhagic fever							
	Plague							
	Marburg disease							
	Lassa fever							
II	Acute poliomyelitis							
	Tuberculosis	79	70	74	57	2,466	320	16,421
	Diphtheria							
	Severe Acute Respiratory Syndrome(SARS)							
	Middle East Respiratory Syndrome (MERS)							
	Avian influenza H5N1							
	Avian influenza H7N9							
III	Cholera				1	2	1	7
	Shigellosis	2		1	1	28	7	115
	Enterohemorrhagic Escherichia coli infection	36	30	28	21	409	112	3,093
	Typhoid fever				1	8		27
	Paratyphoid fever			1		6		12
IV	Hepatitis E	2	1		1	47	2	238
	West Nile fever							
	Hepatitis A			1	1	54	6	215
	Echinococcosis					1		20
	Yellow fever							
	Psittacosis							10
	Omsk hemorrhagic fever							
	Relapsing fever					1		5
	Kyasanur forest disease							
	Q fever							
	Rabies							
	Coccidioidomycosis					1		1
	Monkeypox							
	Zika virus infection							3
	Severe Fever with Thrombocytopenia Syndrome							73
	Hemorrhagic fever with renal syndrome							
	Western equine encephalitis							
	Tick-borne encephalitis							2
	Anthrax							
	Chikungunya fever					2		3
	Scrub typhus(Tsutsugamushi disease)					3	1	112
	Dengue fever	3	3	3	2	54	9	187
	Eastern equine encephalitis							
	Avian influenza (excluding H5N1 and H7N9)							
	Nipah virus infection							
	Japanese spotted fever					1	9	236
	Japanese encephalitis							
	Hantavirus pulmonary syndrome							
	Herpes B virus infection							
	Glanders							
	Brucellosis							1
	Venezuelan equine encephalitis							
Hendra virus infection								
Epidemic typhus								
Botulism					1		3	
Malaria	3	3			21		44	
Tularemia								
Lyme disease					1		18	
Lyssavirus infection(excluding rabies)								
Rift valley fever								
Melioidosis					1		1	
Legionellosis	7	3	3	2	109	30	1,228	
Leptospirosis		2	1		6	1	27	
Rocky mountain spotted fever								

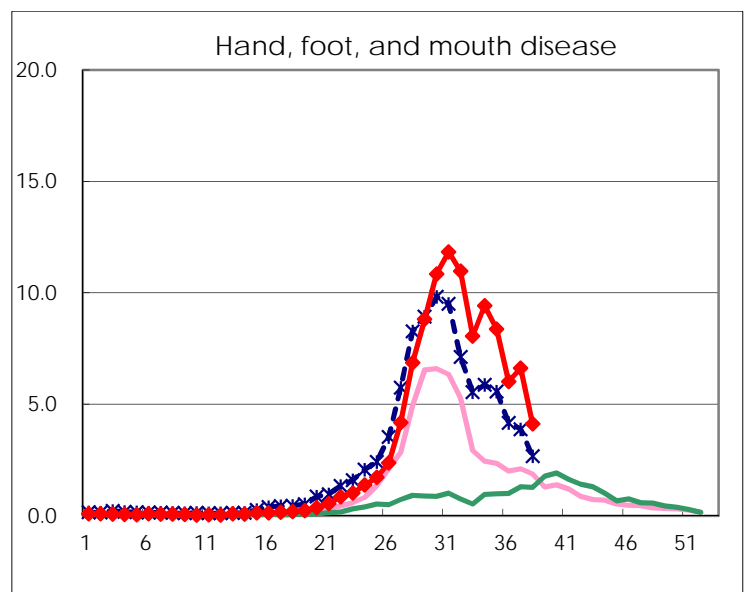
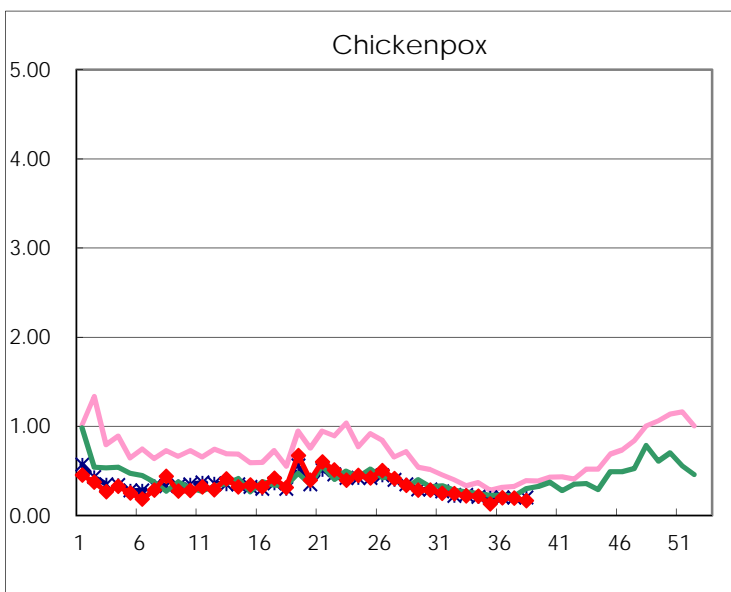
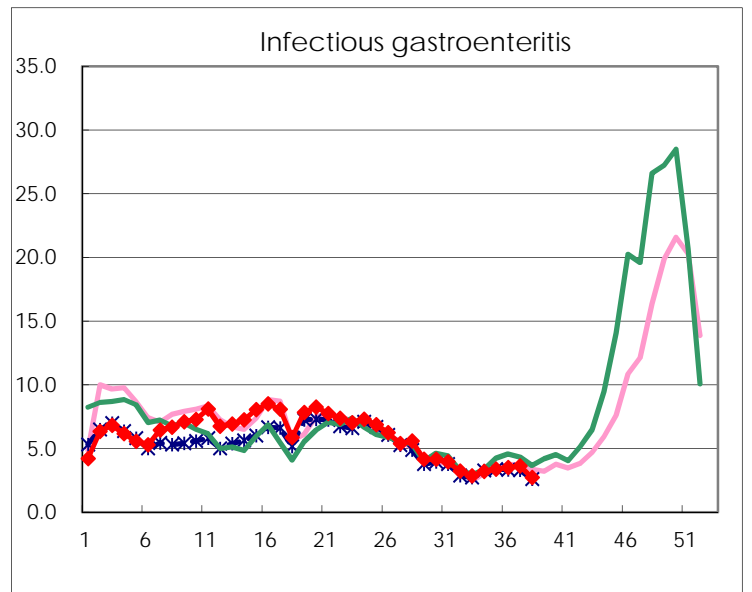
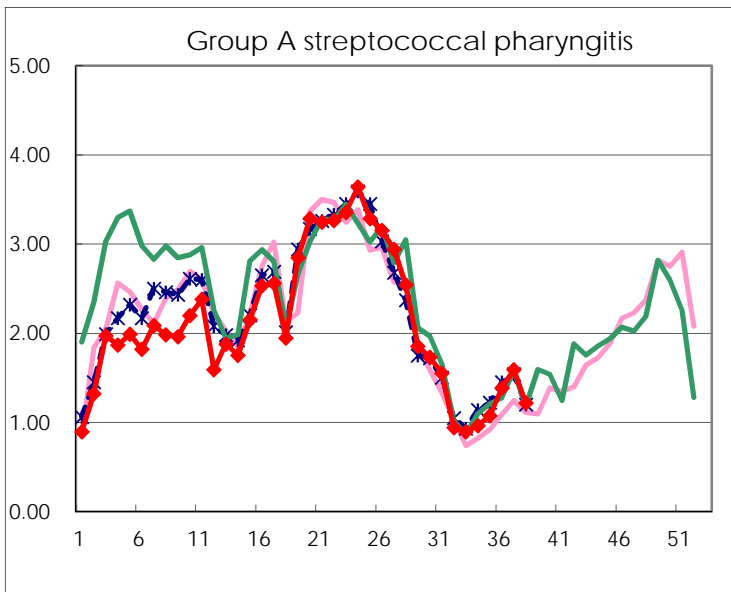
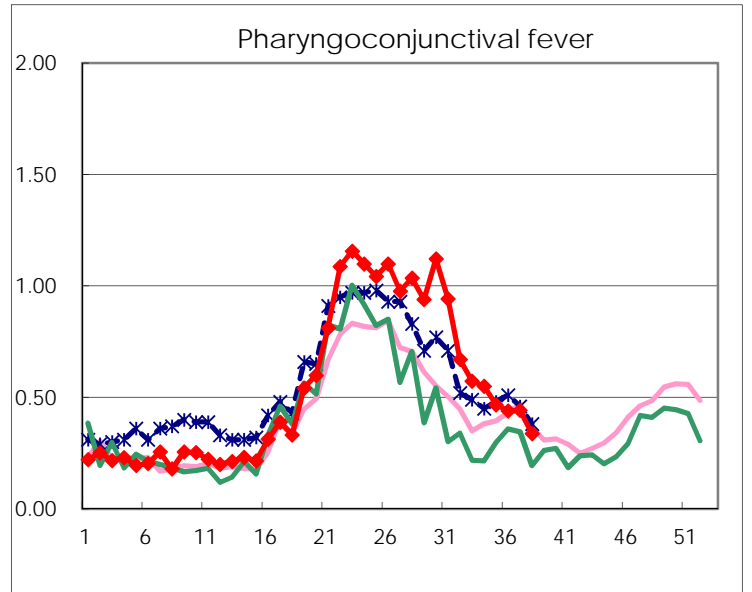
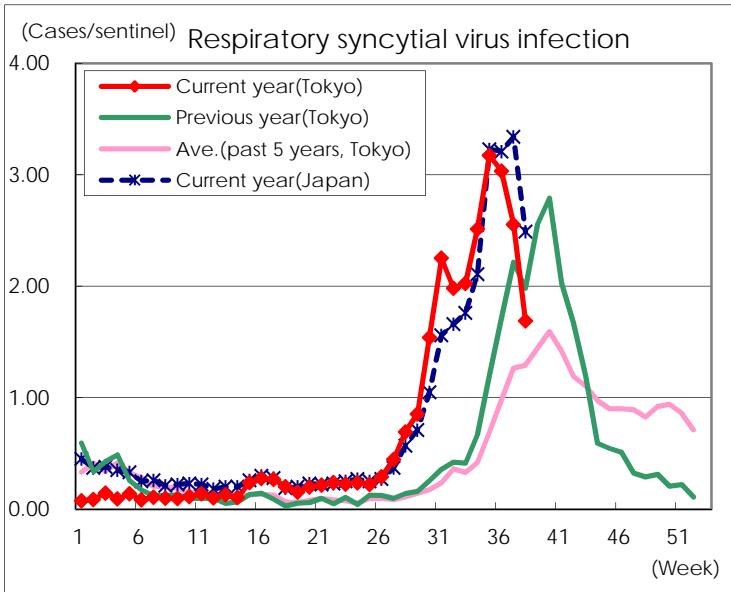
Category	Diseases	Tokyo					Japan	
		35th	36th	37th	38th	Cum 2017	38th	Cum 2017
V	Amebiasis	3	4	4	1	148	6	779
	Viral hepatitis(excluding hepatitis A and E)	3	1		3	48	2	214
	CRE infection	5	2	5	4	152	22	1,174
	Acute encephalitis(excluding JE and WNE)	1	5		2	55	3	516
	Cryptosporidiosis			1		1		9
	Creutzfeldt-Jakob disease					13	3	149
	Severe invasive streptococcal infections(TSLS)	1	1			53	5	407
	Acquired immunodeficiency syndrome (AIDS)	10	9	5	5	341	16	1,006
	Giardiasis		1	1		21		45
	Invasive <i>Haemophilus influenzae</i> disease	1	1			41	1	271
	Invasive meningococcal disease					2		20
	Invasive pneumococcal disease	2		4	4	304	18	2,378
	Varicella (limited to hospitalized case)	1				37	2	218
	Congenital rubella syndrome							
	Syphilis	55	38	39	12	1,295	55	4,086
	Disseminated cryptococcosis				1	11		94
	Tetanus			1		4	3	97
	Vancomycin-resistant <i>S. aureus</i> infection							
	Vancomycin-resistant Enterococcus infection	1				7	1	62
	Rubella	1	3	1	1	20	2	67
Measles					26		176	
MDRA infection					2		17	

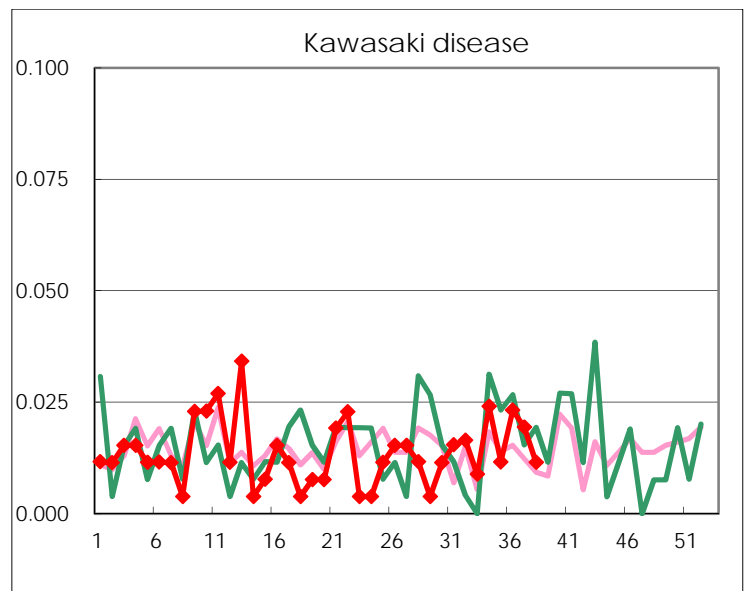
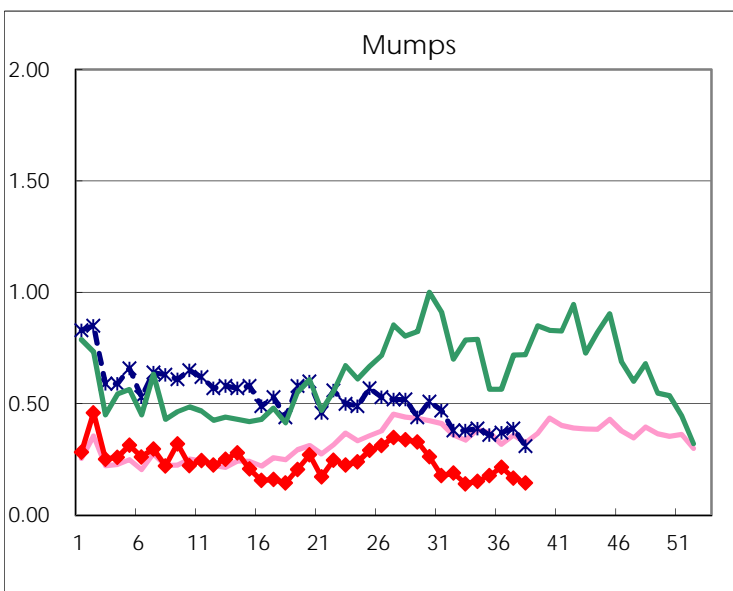
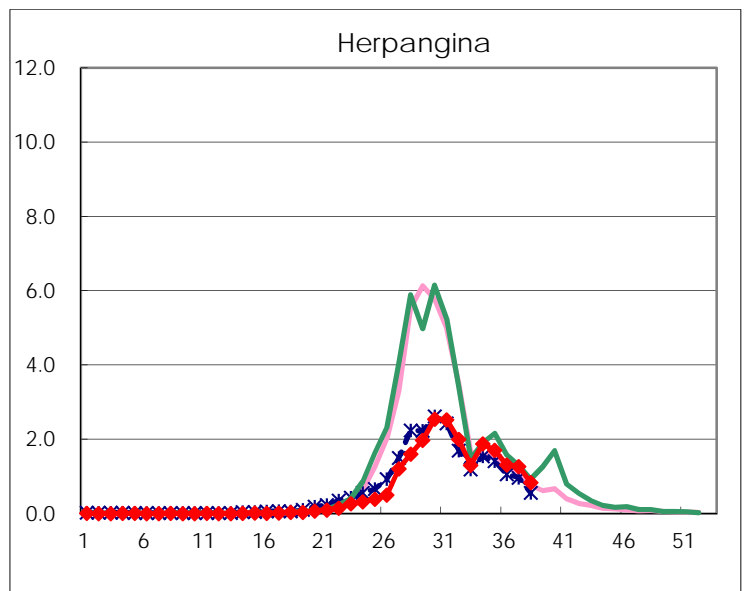
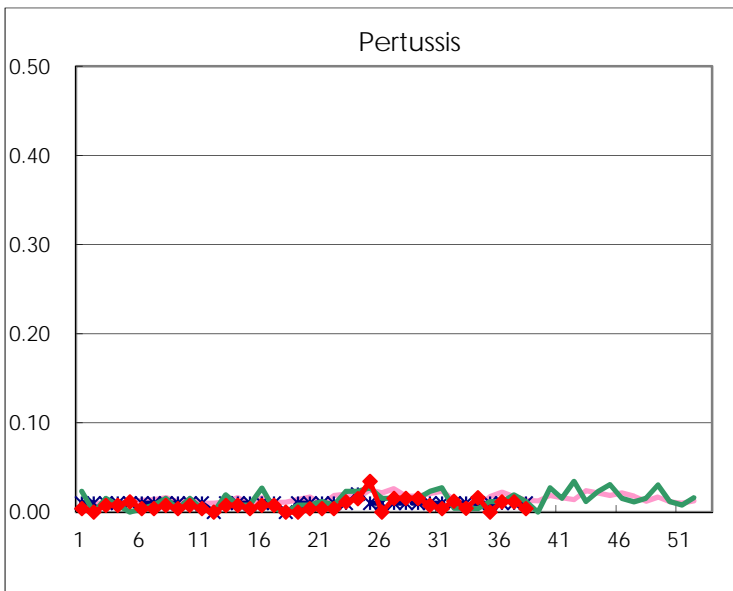
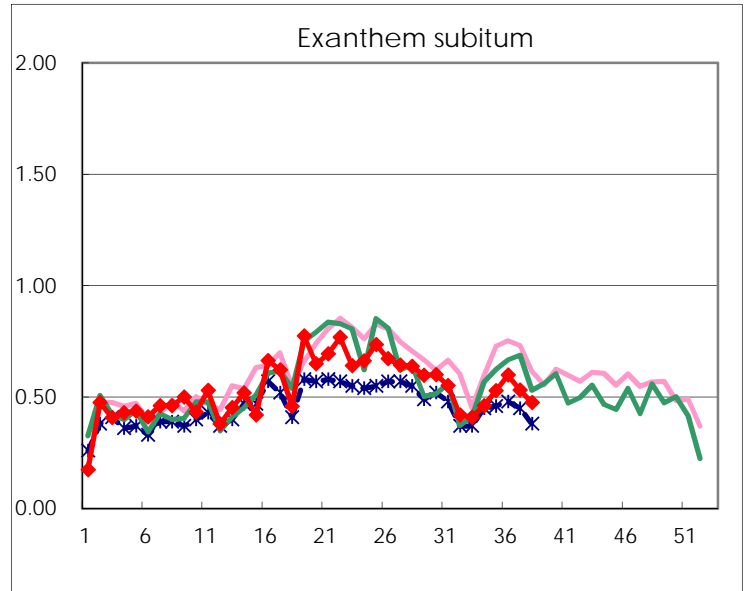
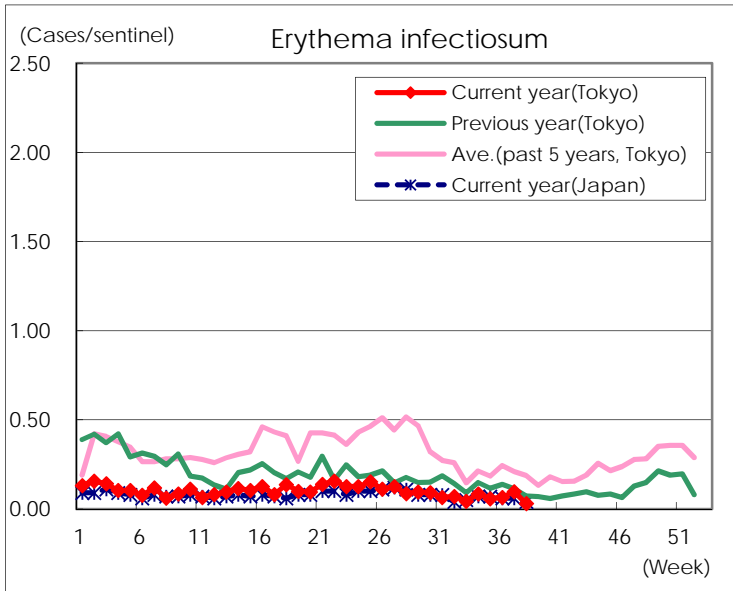
Number of patients with the diseases to be reported  
by the designated clinics and hospitals

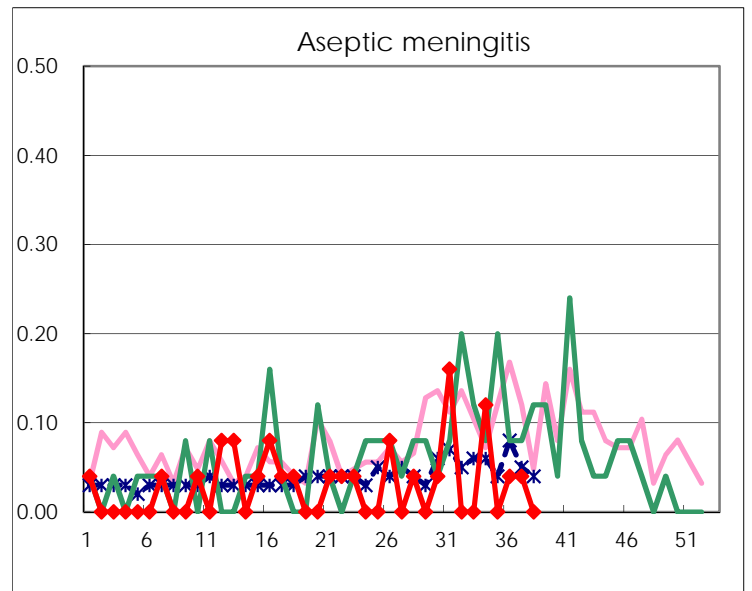
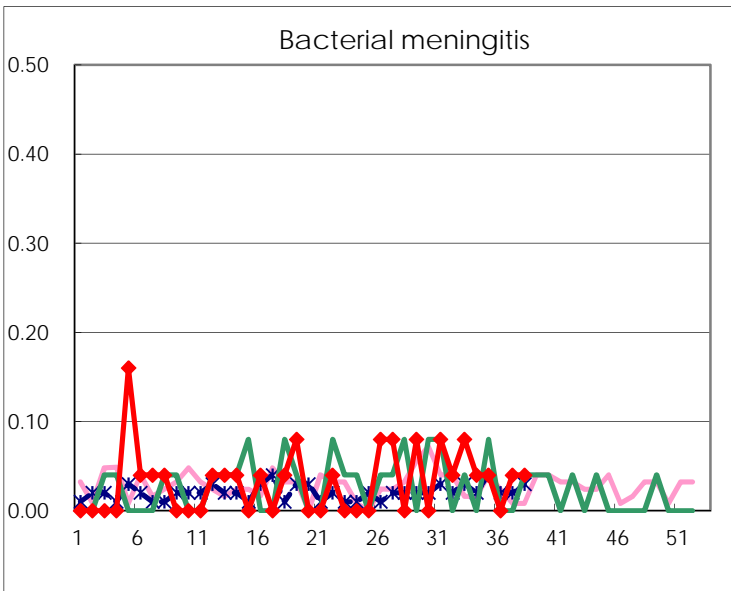
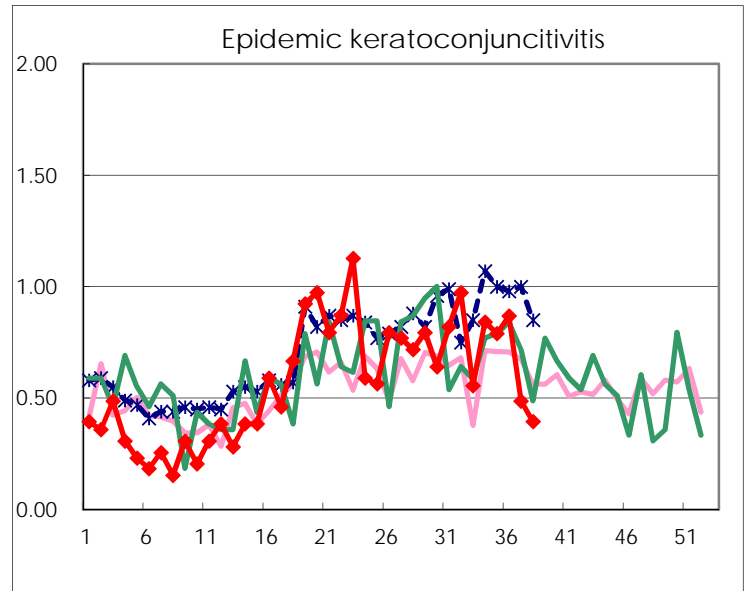
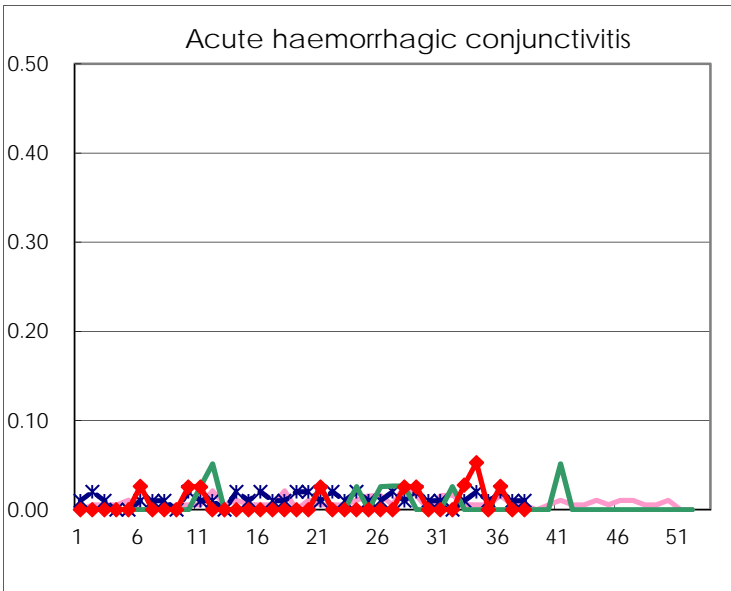
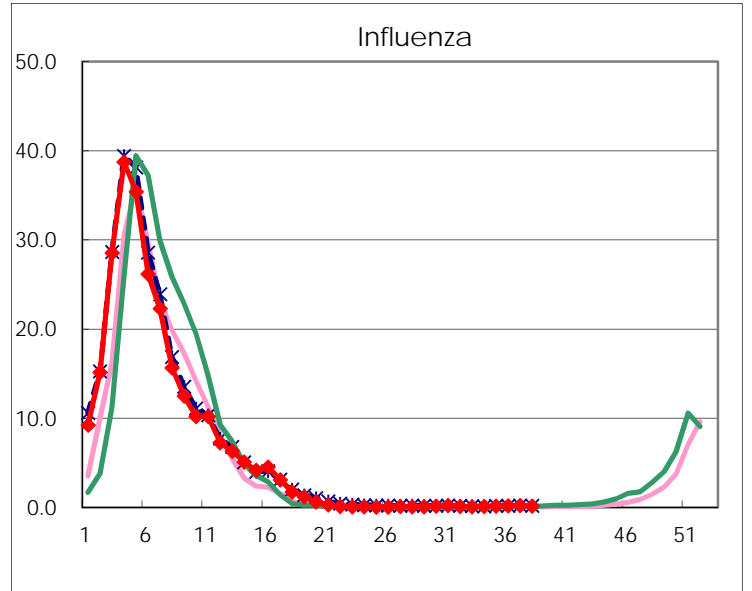
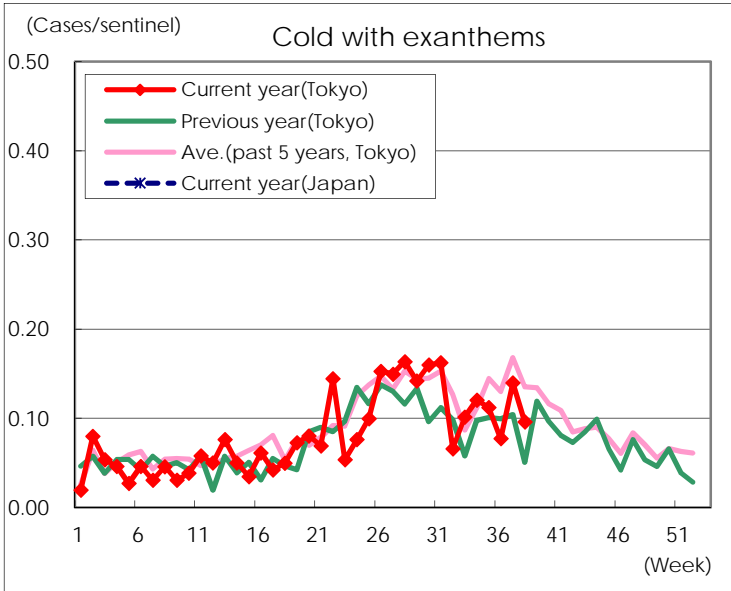
Diseases	Tokyo				
	35th	36th	37th	38th	/sentinel
Respiratory syncytial virus infection	822	786	659	441	1.69
Pharyngoconjunctival fever	121	114	114	88	0.34
Group A streptococcal pharyngitis	278	359	410	318	1.22
Infectious gastroenteritis	872	907	931	710	2.72
Chickenpox	34	51	50	43	0.16
Hand, foot, and mouth disease	2,168	1,560	1,707	1,075	4.12
Erythema infectiosum	15	17	25	8	0.03
Exanthem subitum	137	155	137	124	0.48
Pertussis		3	3	1	
Herpangina	441	340	328	219	0.84
Mumps	46	56	43	38	0.15
Kawasaki disease	3	6	5	3	0.01
Cold with exanthems	29	20	36	25	0.10
Influenza	58	71	88	67	0.16
Acute hemorrhagic conjunctivitis		1			
Epidemic keratoconjunctivitis	30	33	19	15	0.39
Bacterial meningitis	1		1	1	0.04
Aseptic meningitis		1	1		
Mycoplasma pneumonia	6	2	1	4	0.16
Chlamydial pneumonia (excluding psittacosis)	2		1		
Infectious gastroenteritis (only by Rotavirus)	1				
Influenza-Associated Hospitalizations	1		2	3	0.12

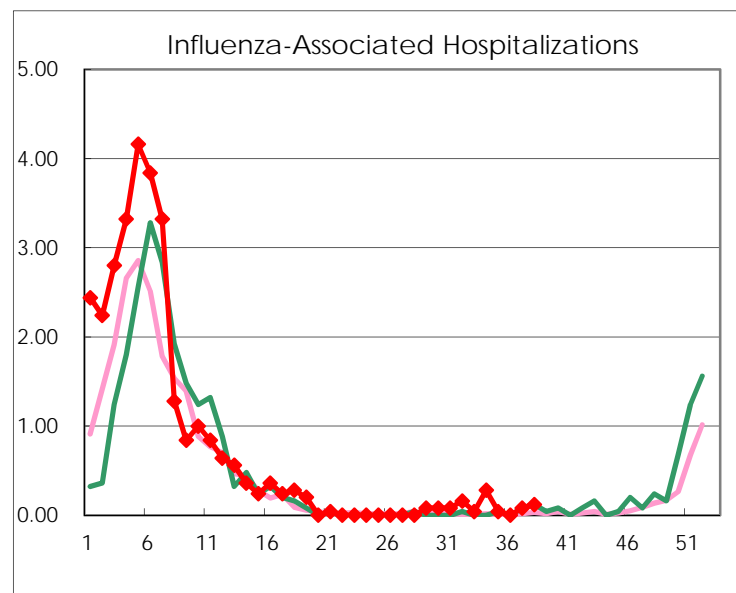
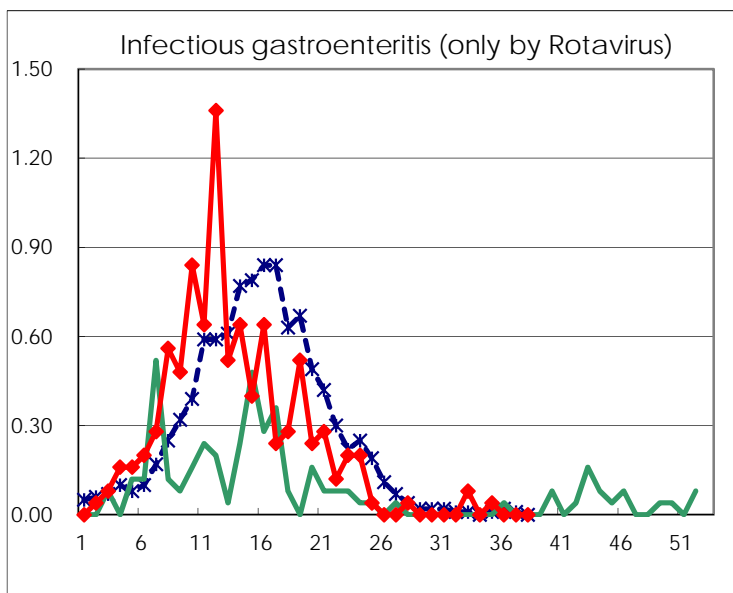
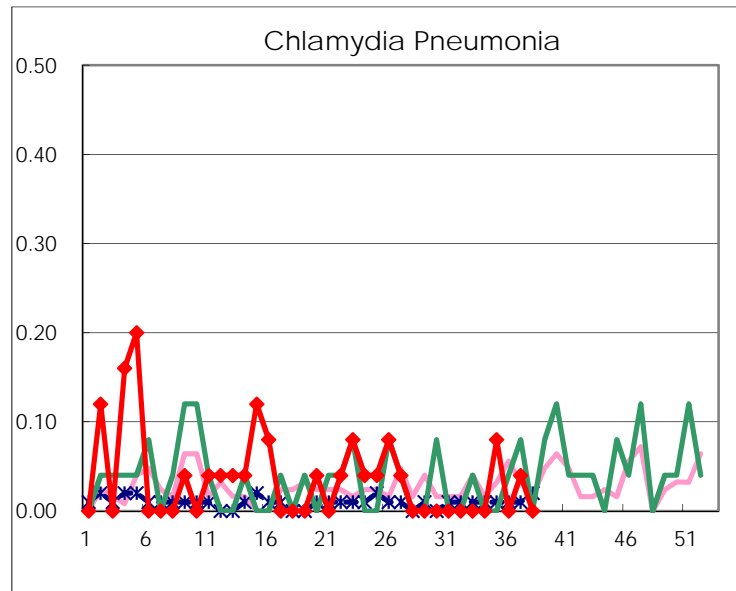
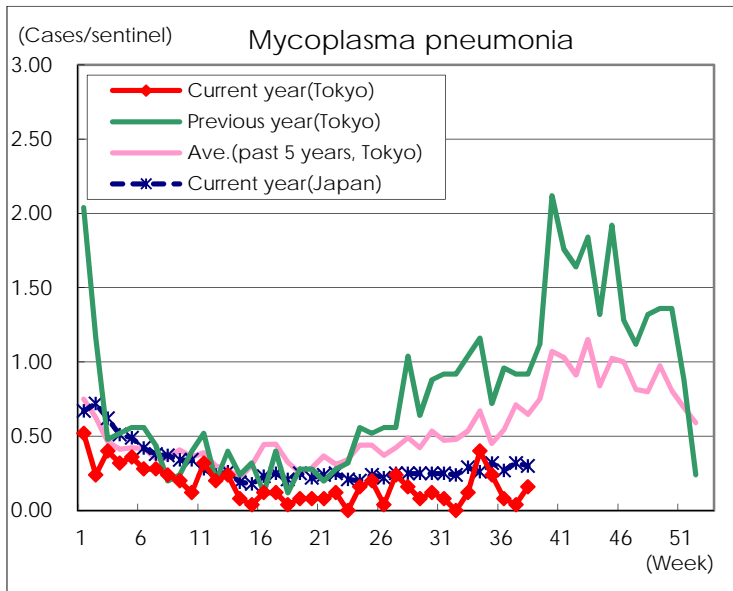
( Blank means 0. )

# Disease Trend Graph (weekly reported cases per sentinel in comparison)









Number of sentinel facilities for weekly reporting		
Types of sentinels	Number of sentinels	Sentinels having reported
Pediatric	264	261
Influenza	419	410
Ophthalmic	39	38
Specially-designated	25	25