

## 5 October 2017 / Number 39

### Surveillance System in Tokyo, Japan

The infectious diseases which all physicians must report

All physicians must report to health centers the incidence of the diseases which are shown at page one. Health centers electronically report the individual cases to Tokyo Metropolitan Infectious Disease Surveillance Center.

The infectious diseases required to be reported by the sentinels

The numbers of patients who visit the sentinel clinics or hospitals during a week are reported to health centers in Tokyo. And they electronically report the numbers to Tokyo Metropolitan Infectious Disease Surveillance Center. We have about 500 sentinel clinics and hospitals in Tokyo.

Tokyo Metropolitan Institute of Public Health

TEL:81-3-3363-3213 FAX:81-3-5332-7365

e-mail:[www@tokyo-eiken.go.jp](mailto:www@tokyo-eiken.go.jp)

URL:[idsc.tokyo-eiken.go.jp/](http://idsc.tokyo-eiken.go.jp/)

---

Number of patients with the diseases which all physicians must report

Category	Diseases	Tokyo					Japan	
		36th	37th	38th	39th	Cum 2017	39th	Cum 2017
I	Ebola hemorrhagic fever							
	Crimean-Congo hemorrhagic fever							
	Smallpox							
	South American hemorrhagic fever							
	Plague							
	Marburg disease							
	Lassa fever							
II	Acute poliomyelitis							
	Tuberculosis	76	77	60	77	2,558	368	16,929
	Diphtheria							
	Severe Acute Respiratory Syndrome(SARS)							
	Middle East Respiratory Syndrome (MERS)							
	Avian influenza H5N1							
	Avian influenza H7N9							
III	Cholera			1		2		7
	Shigellosis		1	1		28	2	117
	Enterohemorrhagic Escherichia coli infection	30	28	21	7	416	116	3,220
	Typhoid fever			1		8	1	28
	Paratyphoid fever		1			6		12
IV	Hepatitis E	1		1		47	4	243
	West Nile fever							
	Hepatitis A		1	1		54	2	220
	Echinococcosis					1		22
	Yellow fever							
	Psittacosis							10
	Omsk hemorrhagic fever							
	Relapsing fever					1		5
	Kyasanur forest disease							
	Q fever							
	Rabies							
	Coccidioidomycosis					1		1
	Monkeypox							
	Zika virus infection							3
	Severe Fever with Thrombocytopenia Syndrome						1	74
	Hemorrhagic fever with renal syndrome							
	Western equine encephalitis							
	Tick-borne encephalitis							2
	Anthrax							
	Chikungunya fever					2		3
	Scrub typhus(Tsutsugamushi disease)					3	1	113
	Dengue fever	3	3	2	2	56	7	195
	Eastern equine encephalitis							
	Avian influenza (excluding H5N1 and H7N9)							
	Nipah virus infection							
	Japanese spotted fever					1	15	254
	Japanese encephalitis							
	Hantavirus pulmonary syndrome							
	Herpes B virus infection							
	Glanders							
	Brucellosis							1
	Venezuelan equine encephalitis							
Hendra virus infection								
Epidemic typhus								
Botulism					1		3	
Malaria	3				21		44	
Tularemia								
Lyme disease					1		18	
Lyssavirus infection(excluding rabies)								
Rift valley fever								
Melioidosis					1		1	
Legionellosis	3	3	2	4	114	44	1,279	
Leptospirosis	2	1			6	1	28	
Rocky mountain spotted fever								

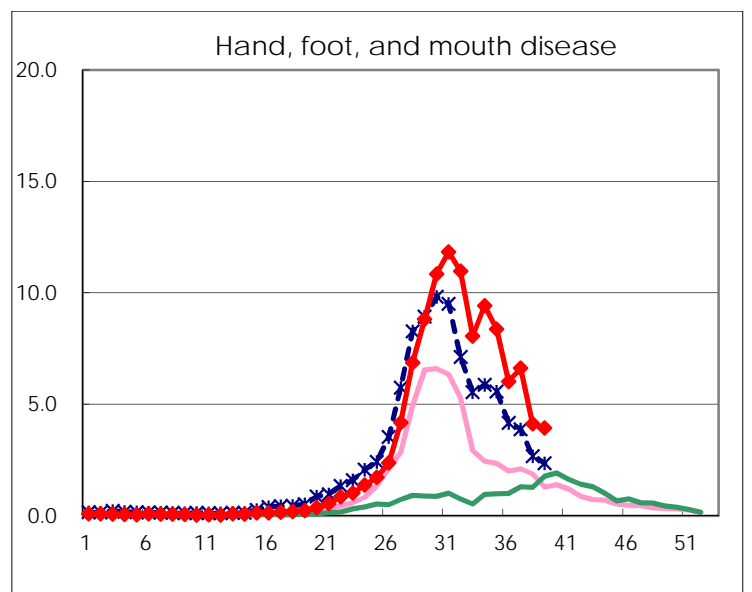
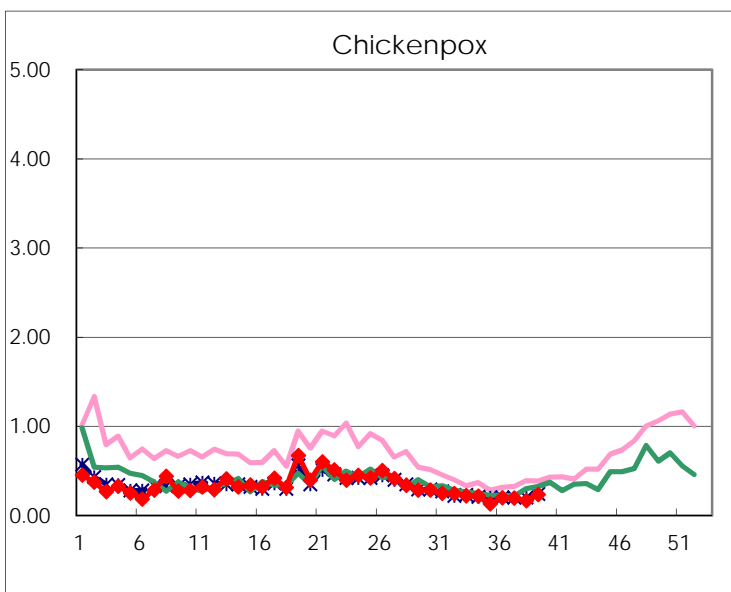
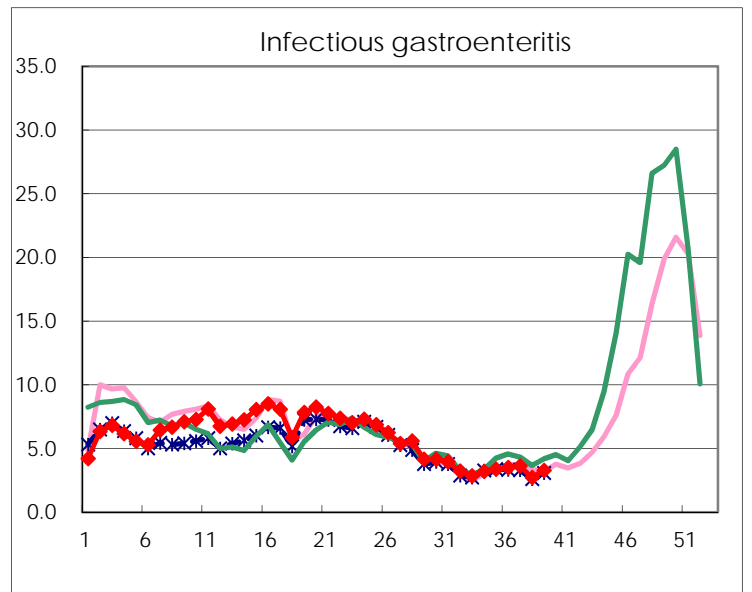
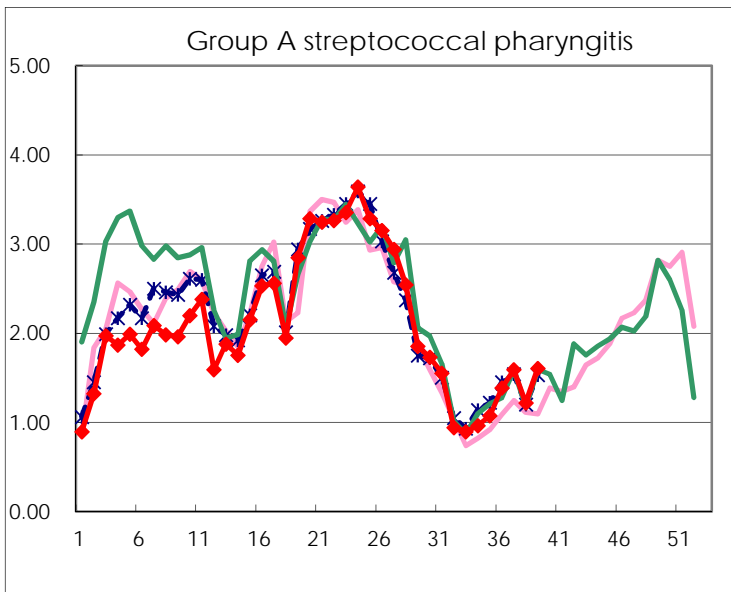
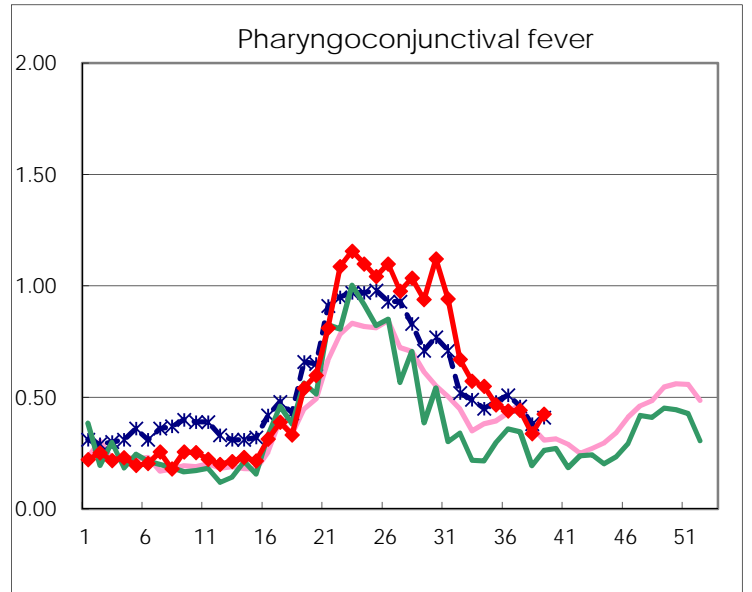
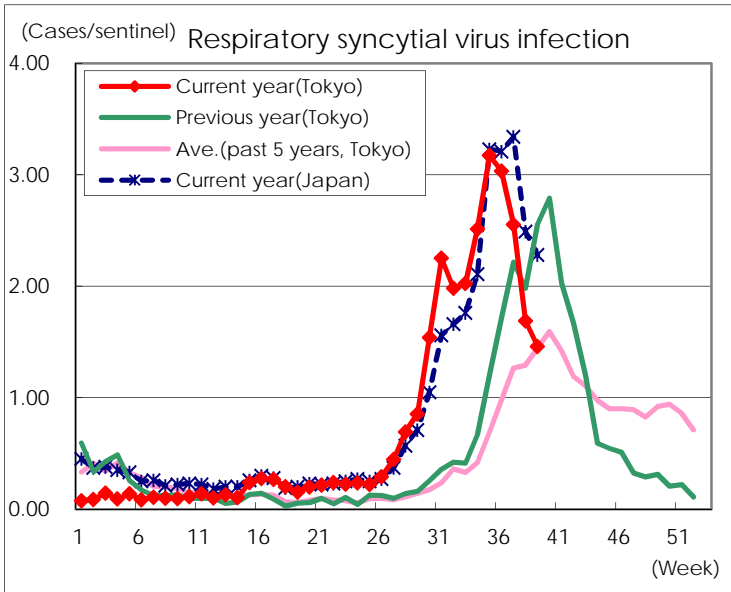
Category	Diseases	Tokyo					Japan	
		36th	37th	38th	39th	Cum 2017	39th	Cum 2017
V	Amebiasis	4	4	1	4	152	19	807
	Viral hepatitis(excluding hepatitis A and E)	1		3		48	1	215
	CRE infection	2	5	4	3	155	22	1,209
	Acute encephalitis(excluding JE and WNE)	5		2	1	56	10	528
	Cryptosporidiosis		1			1		9
	Creutzfeldt-Jakob disease					13	3	154
	Severe invasive streptococcal infections(TSLS)	1			3	56	4	419
	Acquired immunodeficiency syndrome (AIDS)	9	6	5	10	352	16	1,029
	Giardiasis	1	2			22		46
	Invasive <i>Haemophilus influenzae</i> disease	1				41	3	274
	Invasive meningococcal disease					2		20
	Invasive pneumococcal disease		4	4	4	308	22	2,415
	Varicella (limited to hospitalized case)					37	1	220
	Congenital rubella syndrome							
	Syphilis	38	42	17	49	1,354	89	4,245
	Disseminated cryptococcosis			1		11	3	98
	Tetanus		1			4	4	101
	Vancomycin-resistant <i>S. aureus</i> infection							
	Vancomycin-resistant Enterococcus infection					7		62
	Rubella	3	1	1		20	2	69
Measles				1	27	4	180	
MDRA infection					2		17	

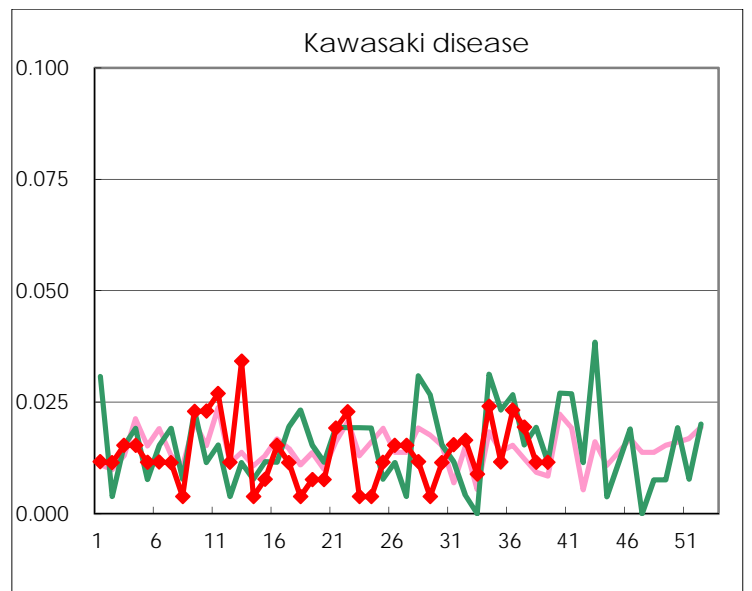
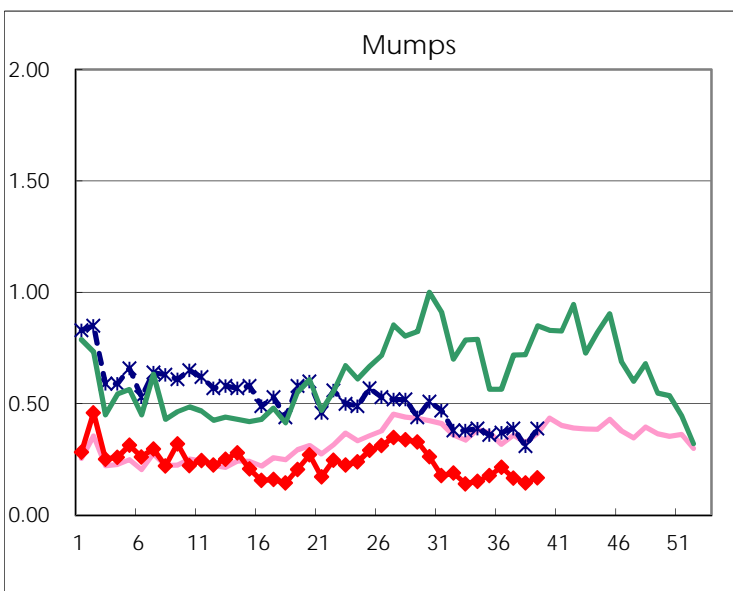
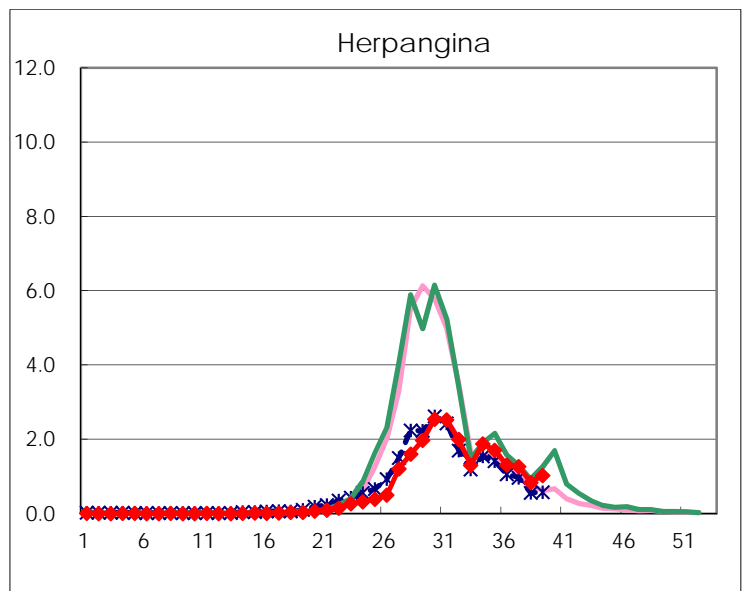
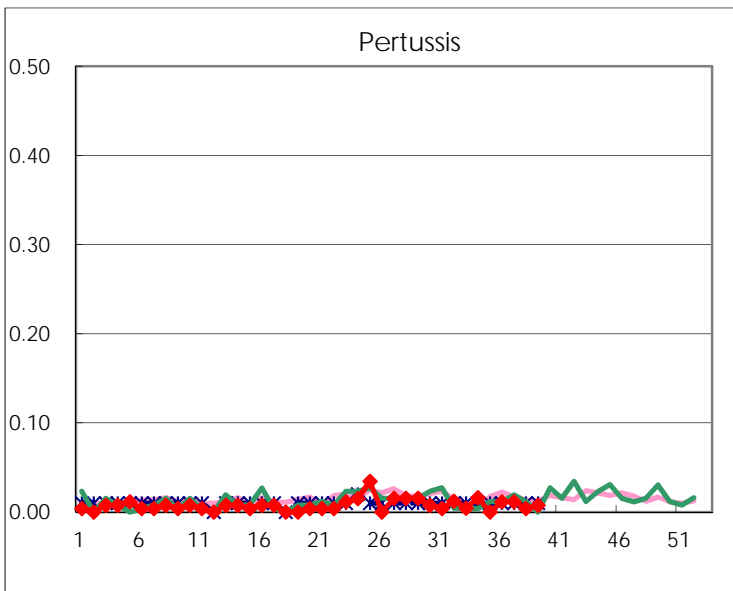
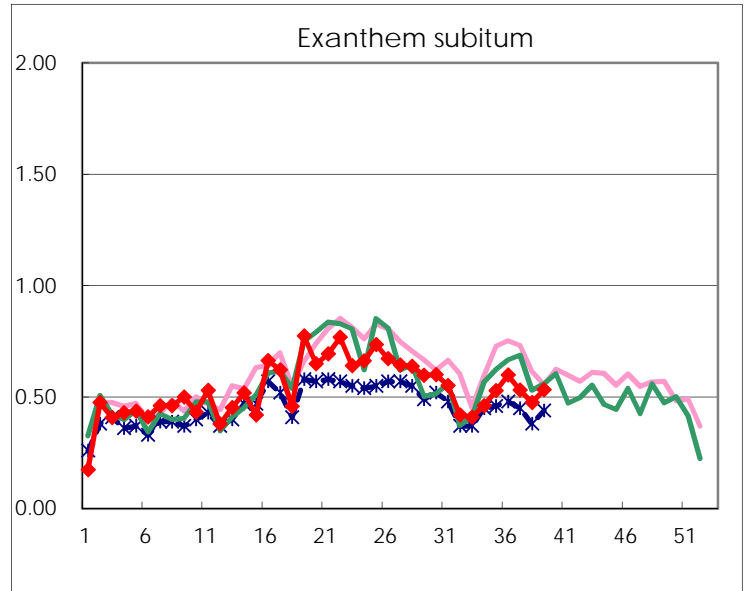
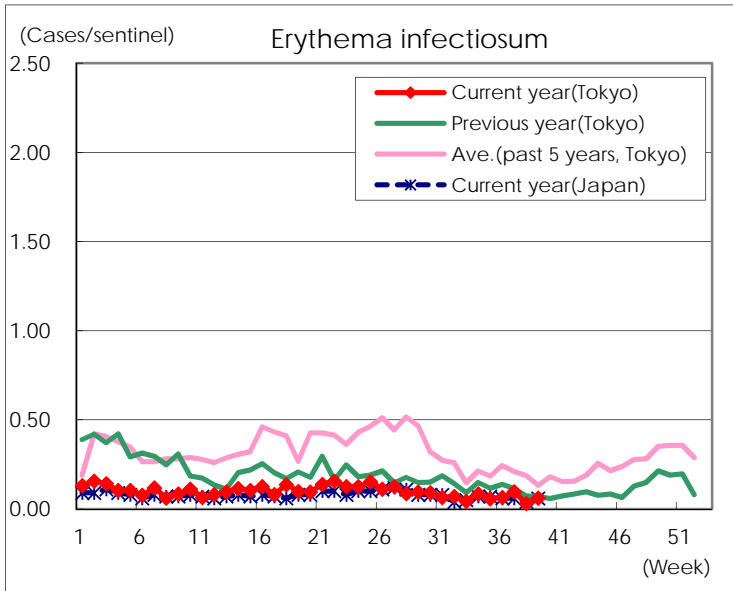
Number of patients with the diseases to be reported  
by the designated clinics and hospitals

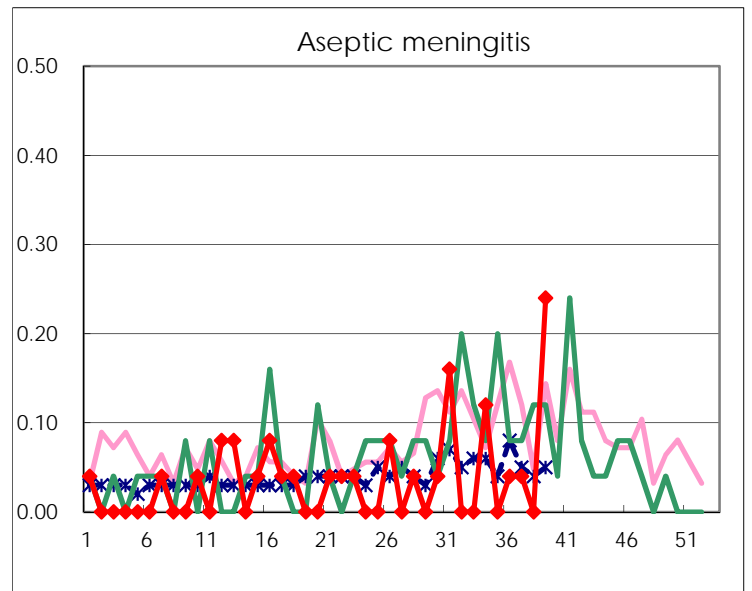
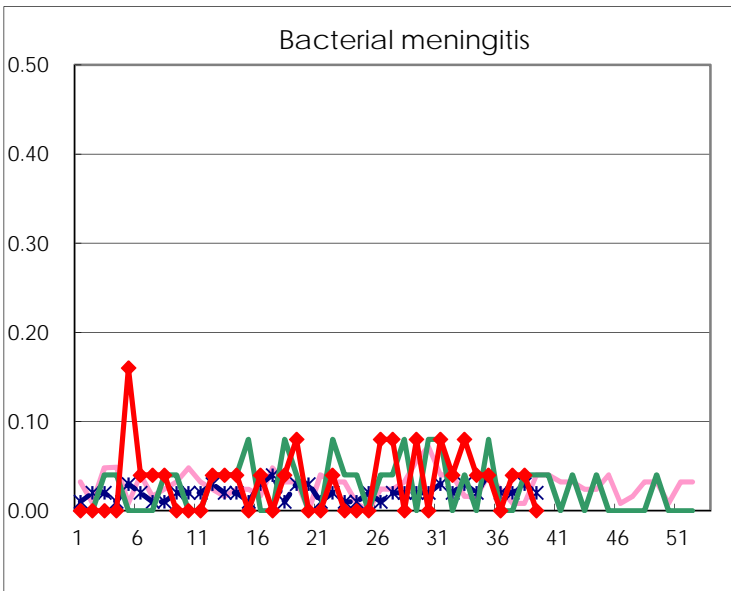
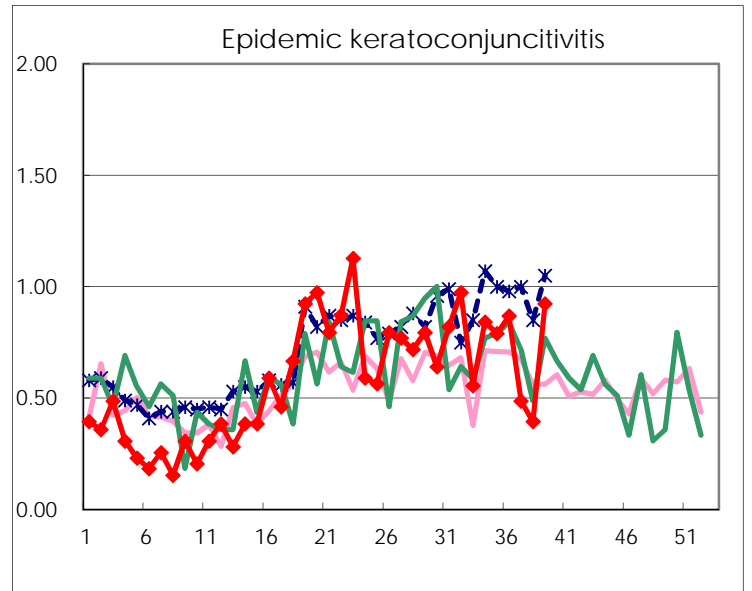
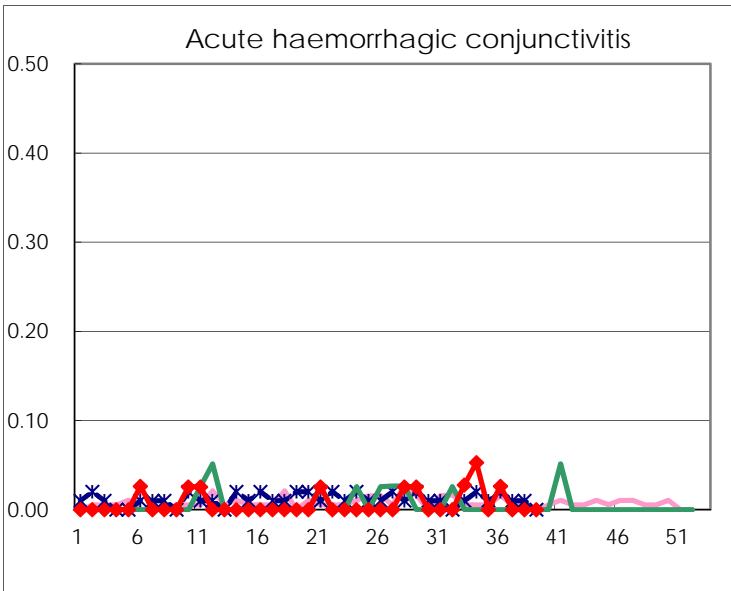
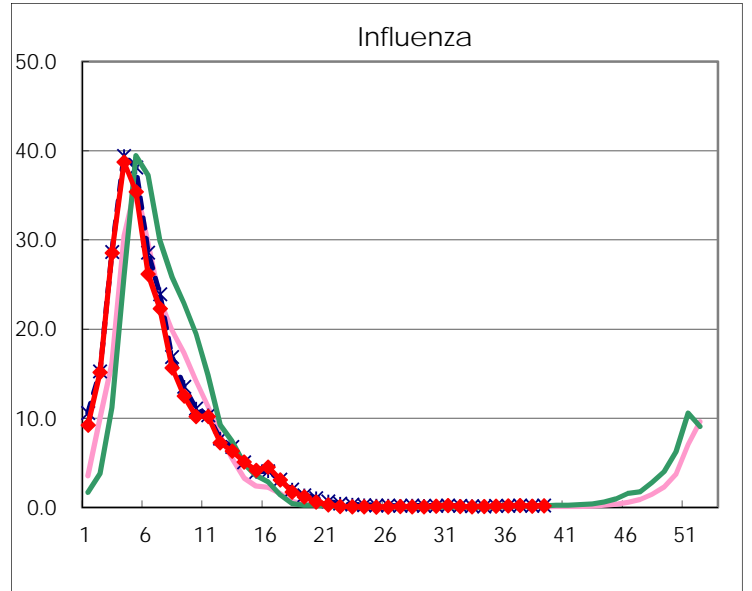
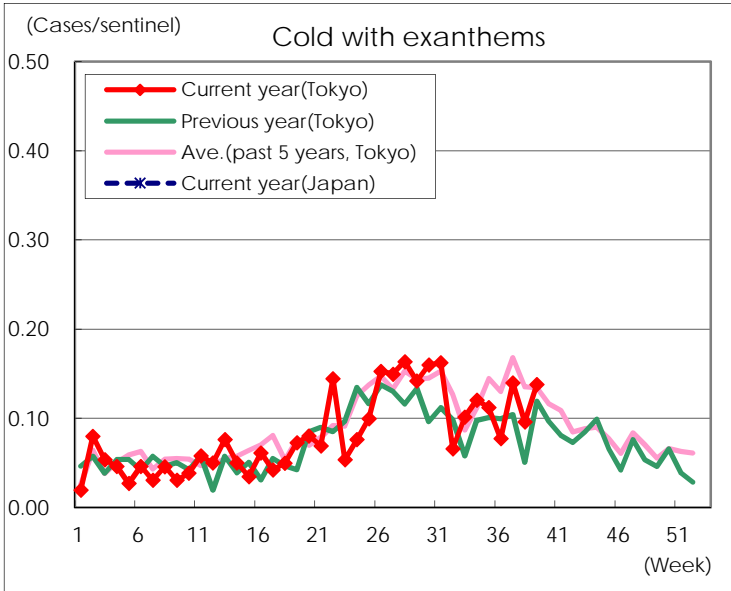
Diseases	Tokyo				
	36th	37th	38th	39th	/sentinel
Respiratory syncytial virus infection	786	659	441	381	1.46
Pharyngoconjunctival fever	114	114	88	111	0.43
Group A streptococcal pharyngitis	359	410	318	419	1.61
Infectious gastroenteritis	907	931	710	856	3.28
Chickenpox	51	50	43	61	0.23
Hand, foot, and mouth disease	1,560	1,707	1,075	1,026	3.93
Erythema infectiosum	17	25	8	16	0.06
Exanthem subitum	155	137	124	139	0.53
Pertussis	3	3	1	2	0.01
Herpangina	340	328	219	268	1.03
Mumps	56	43	38	44	0.17
Kawasaki disease	6	5	3	3	0.01
Cold with exanthems	20	36	25	36	0.14
Influenza	71	88	67	79	0.19
Acute hemorrhagic conjunctivitis	1				
Epidemic keratoconjunctivitis	33	19	15	36	0.92
Bacterial meningitis		1	1		
Aseptic meningitis	1	1		6	0.24
Mycoplasma pneumonia	2	1	4	6	0.24
Chlamydial pneumonia (excluding psittacosis)		1			
Infectious gastroenteritis (only by Rotavirus)					
Influenza-Associated Hospitalizations		2	3	3	0.12

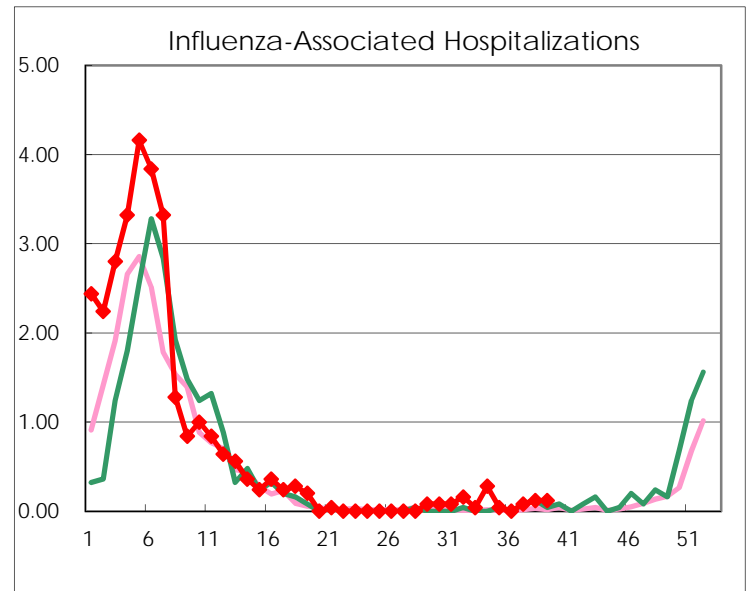
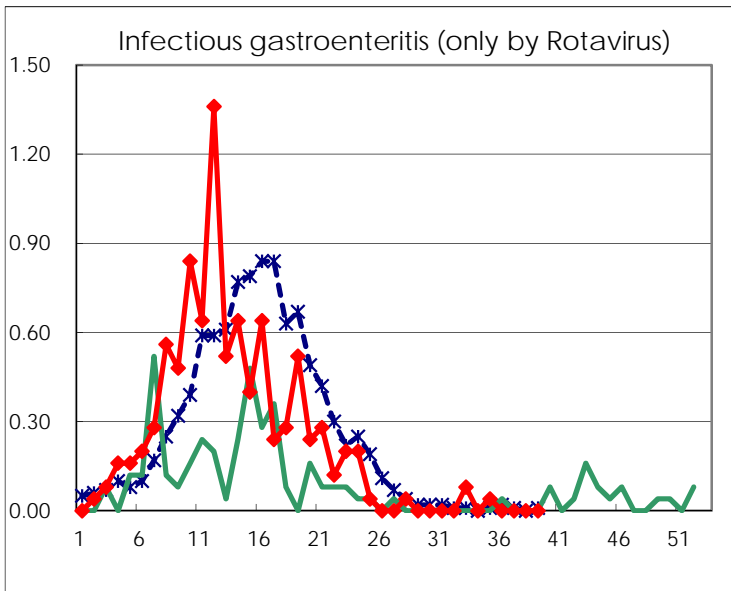
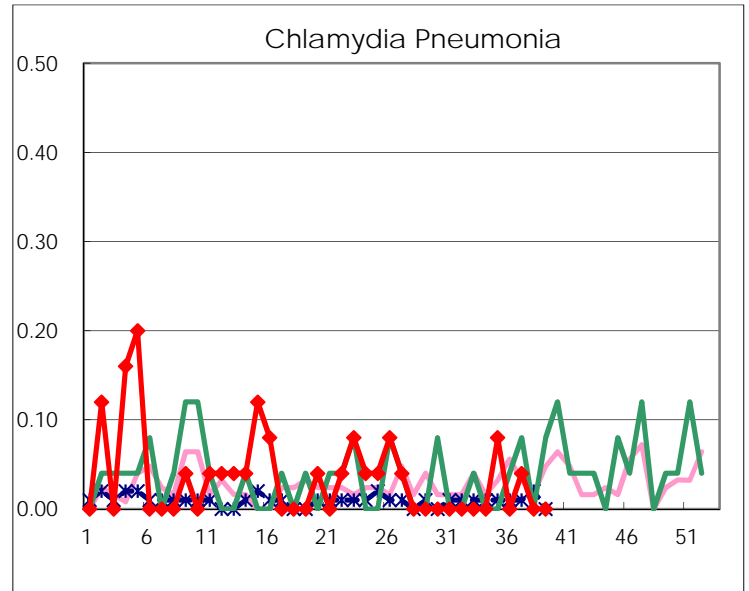
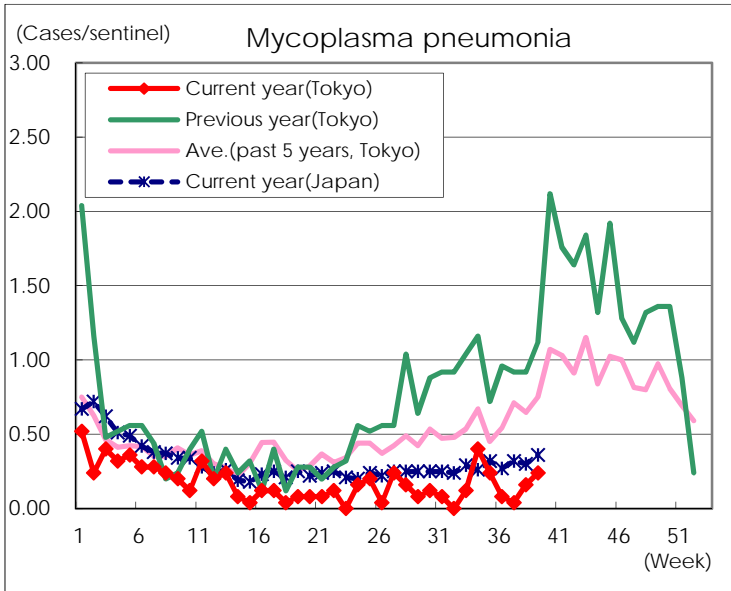
( Blank means 0. )

# Disease Trend Graph (weekly reported cases per sentinel in comparison)









Number of sentinel facilities for weekly reporting		
Types of sentinels	Number of sentinels	Sentinels having reported
Pediatric	264	261
Influenza	419	413
Ophthalmic	39	39
Specially-designated	25	25