

12 October 2017 / Number 40

Surveillance System in Tokyo, Japan

The infectious diseases which all physicians must report

All physicians must report to health centers the incidence of the diseases which are shown at page one. Health centers electronically report the individual cases to Tokyo Metropolitan Infectious Disease Surveillance Center.

The infectious diseases required to be reported by the sentinels

The numbers of patients who visit the sentinel clinics or hospitals during a week are reported to health centers in Tokyo. And they electronically report the numbers to Tokyo Metropolitan Infectious Disease Surveillance Center. We have about 500 sentinel clinics and hospitals in Tokyo.

Tokyo Metropolitan Institute of Public Health

TEL:81-3-3363-3213 FAX:81-3-5332-7365

e-mail:www@tokyo-eiken.go.jp

URL:idsc.tokyo-eiken.go.jp/

Number of patients with the diseases which all physicians must report

Category	Diseases	Tokyo					Japan	
		37th	38th	39th	40th	Cum 2017	40th	Cum 2017
I	Ebola hemorrhagic fever							
	Crimean-Congo hemorrhagic fever							
	Smallpox							
	South American hemorrhagic fever							
	Plague							
	Marburg disease							
	Lassa fever							
II	Acute poliomyelitis							
	Tuberculosis	77	61	80	70	2,631	324	17,325
	Diphtheria							
	Severe Acute Respiratory Syndrome(SARS)							
	Middle East Respiratory Syndrome (MERS)							
	Avian influenza H5N1							
	Avian influenza H7N9							
III	Cholera		1			2		7
	Shigellosis	1	1		1	29	3	120
	Enterohemorrhagic Escherichia coli infection	28	21	7	1	417	86	3,313
	Typhoid fever		1			8	2	30
	Paratyphoid fever	1				6	1	13
IV	Hepatitis E		1		2	49	3	247
	West Nile fever							
	Hepatitis A	1	1			54	4	225
	Echinococcosis					1		22
	Yellow fever							
	Psittacosis							10
	Omsk hemorrhagic fever							
	Relapsing fever				1	2	2	7
	Kyasanur forest disease							
	Q fever							
	Rabies							
	Coccidioidomycosis					1		1
	Monkeypox							
	Zika virus infection							3
	Severe Fever with Thrombocytopenia Syndrome						6	81
	Hemorrhagic fever with renal syndrome							
	Western equine encephalitis							
	Tick-borne encephalitis							2
	Anthrax							
	Chikungunya fever					2		3
	Scrub typhus(Tsutsugamushi disease)					3	1	114
	Dengue fever	3	2	2	1	57	7	202
	Eastern equine encephalitis							
	Avian influenza (excluding H5N1 and H7N9)							
	Nipah virus infection							
	Japanese spotted fever					1	7	263
	Japanese encephalitis						1	1
	Hantavirus pulmonary syndrome							
	Herpes B virus infection							
	Glanders							
	Brucellosis							1
	Venezuelan equine encephalitis							
Hendra virus infection								
Epidemic typhus								
Botulism					1		3	
Malaria				1	22	2	46	
Tularemia								
Lyme disease					1		18	
Lyssavirus infection(excluding rabies)								
Rift valley fever								
Melioidosis					1		1	
Legionellosis	3	2	4	5	119	28	1,313	
Leptospirosis	1				6		29	
Rocky mountain spotted fever								

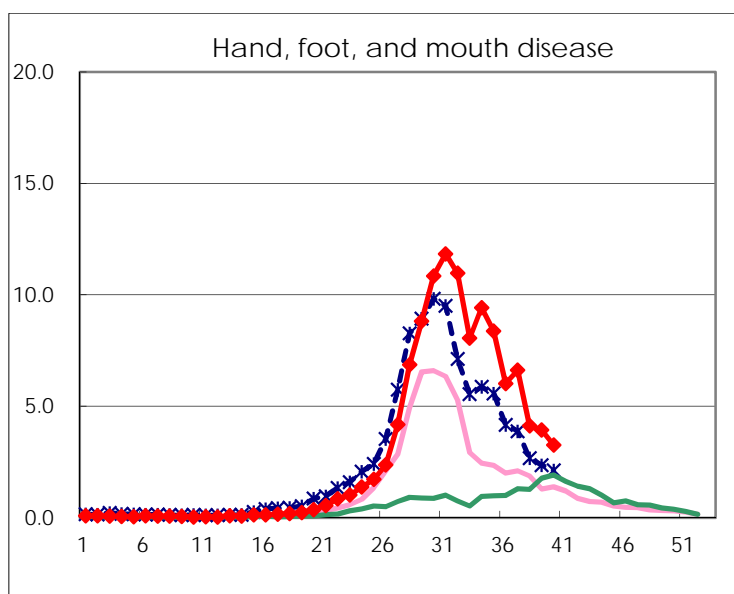
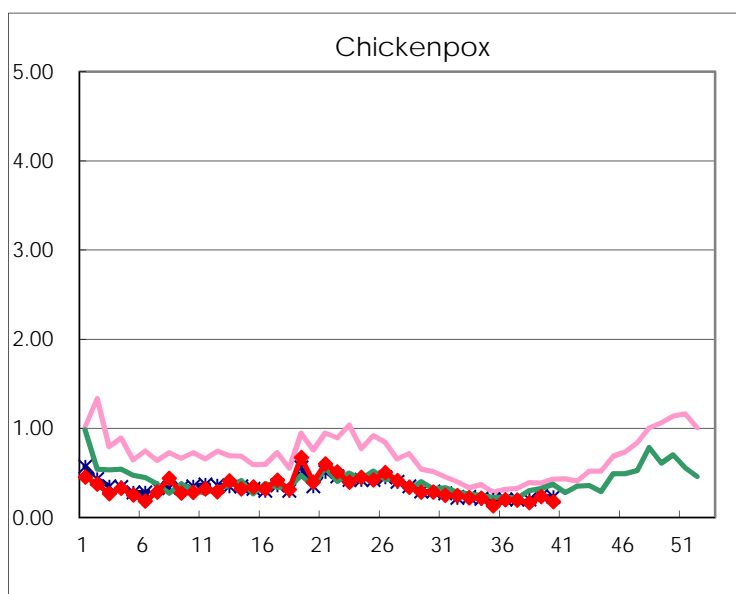
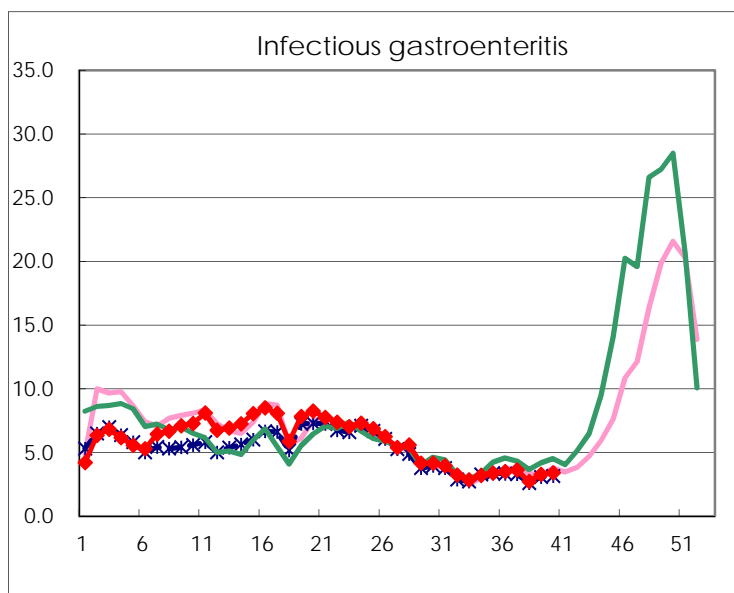
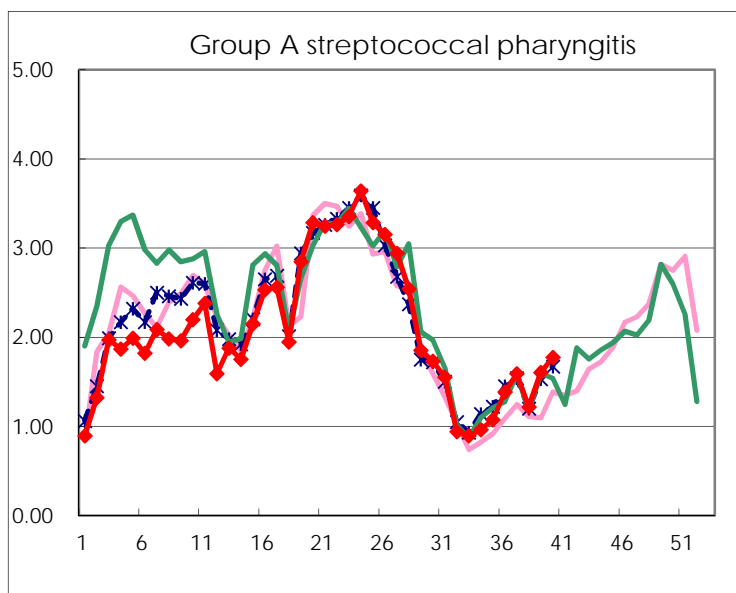
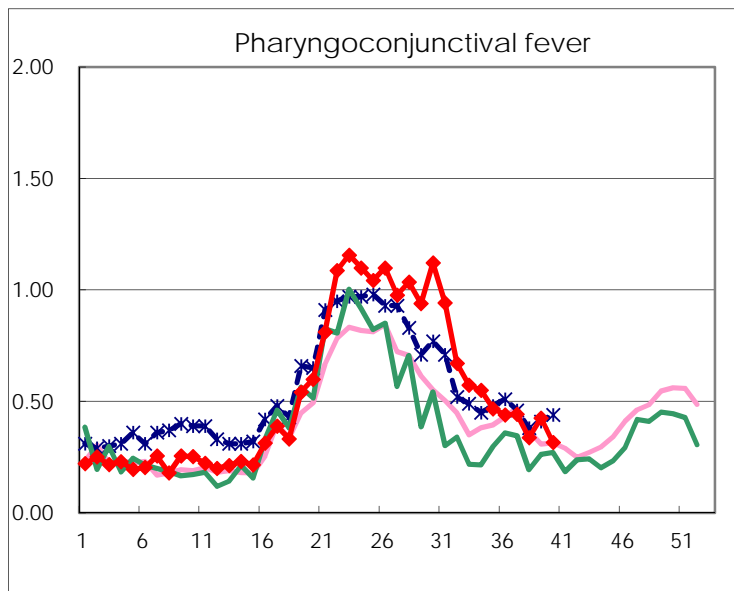
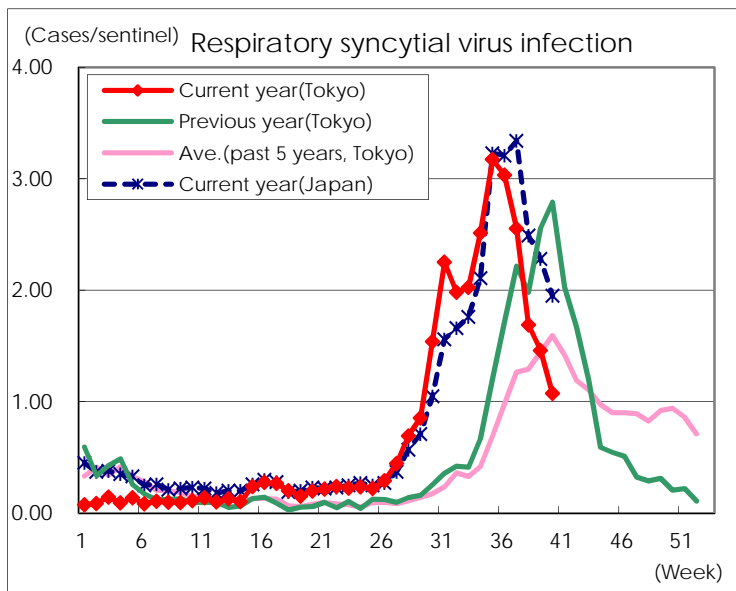
Category	Diseases	Tokyo					Japan	
		37th	38th	39th	40th	Cum 2017	40th	Cum 2017
V	Amebiasis	4	1	4	10	162	18	829
	Viral hepatitis(excluding hepatitis A and E)		3		1	49	2	223
	CRE infection	5	4	4	5	161	19	1,238
	Acute encephalitis(excluding JE and WNE)		2	1	2	58	9	540
	Cryptosporidiosis	1				1		9
	Creutzfeldt-Jakob disease					13		154
	Severe invasive streptococcal infections(TSLS)			3	1	57	6	426
	Acquired immunodeficiency syndrome (AIDS)	6	5	11	5	358	12	1,049
	Giardiasis	2				22		46
	Invasive <i>Haemophilus influenzae</i> disease				3	44	4	280
	Invasive meningococcal disease					2		20
	Invasive pneumococcal disease	4	4	5	5	314	27	2,457
	Varicella (limited to hospitalized case)				3	40	5	229
	Congenital rubella syndrome							
	Syphilis	42	17	50	26	1,381	61	4,345
	Disseminated cryptococcosis		1			11	2	100
	Tetanus	1				4	2	103
	Vancomycin-resistant <i>S. aureus</i> infection							
	Vancomycin-resistant Enterococcus infection					7		62
	Rubella	1	1			20	1	70
Measles			1	1	28	5	185	
MDRA infection				1	3		18	

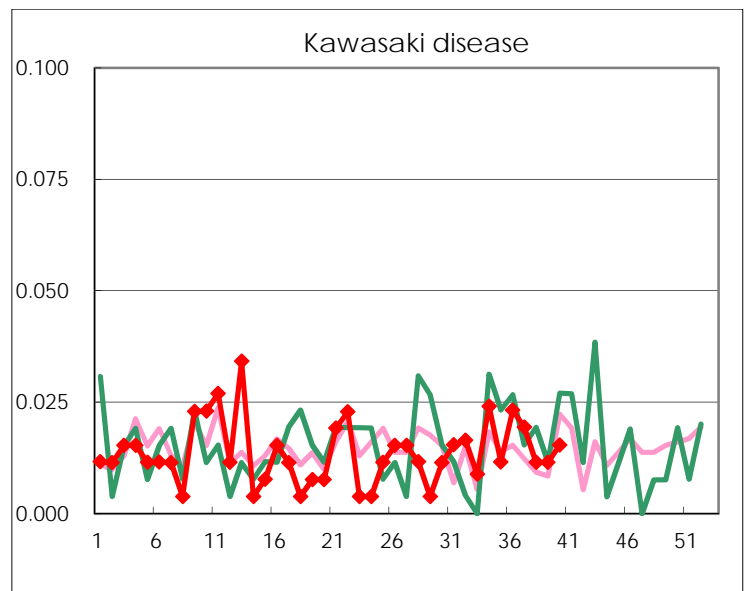
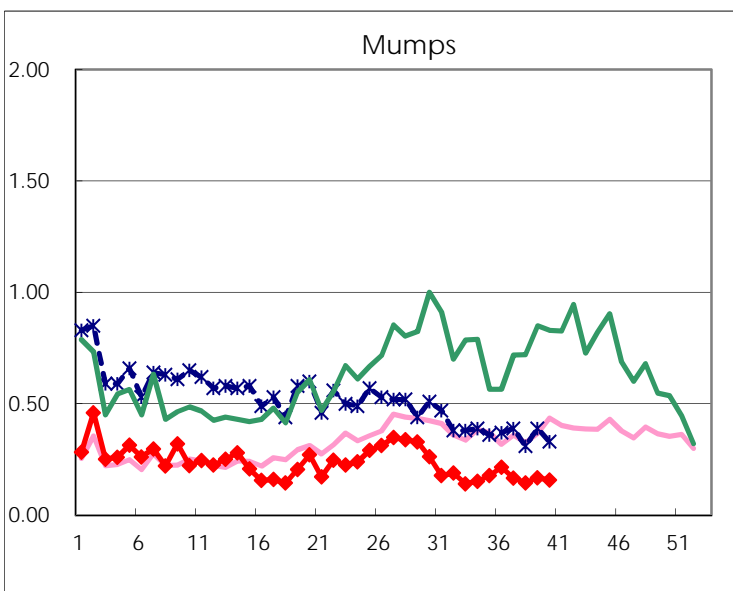
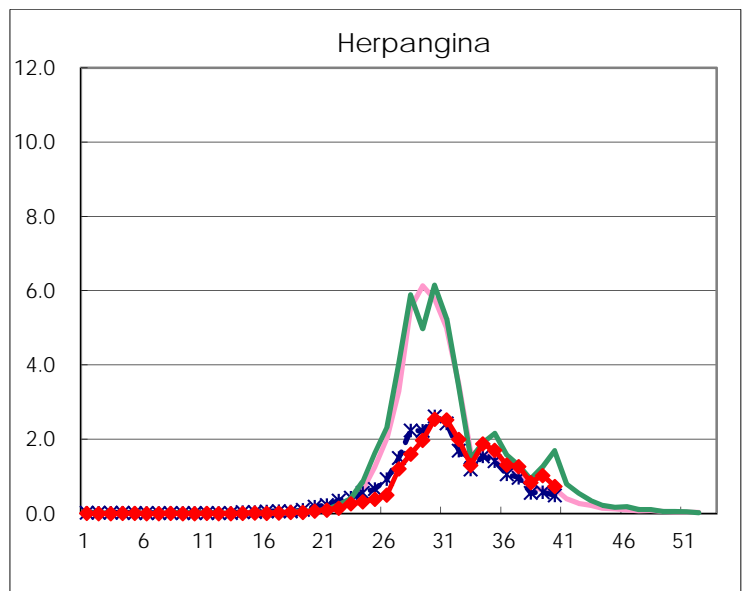
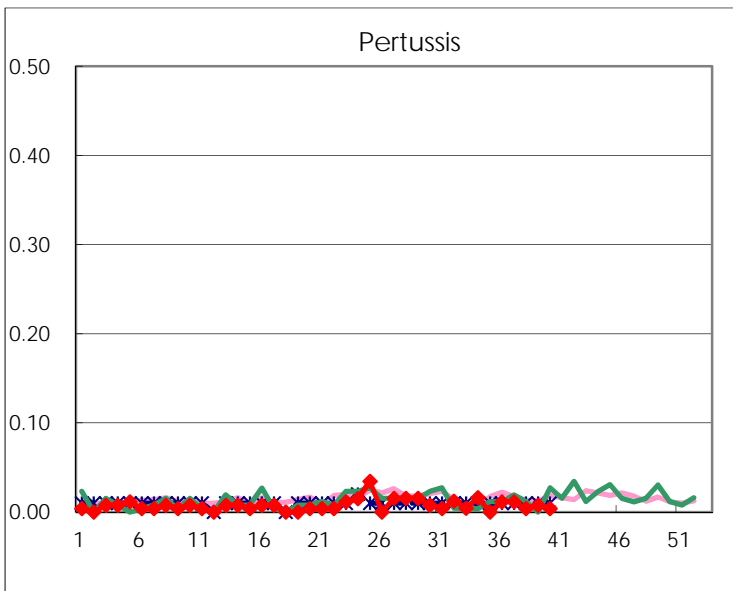
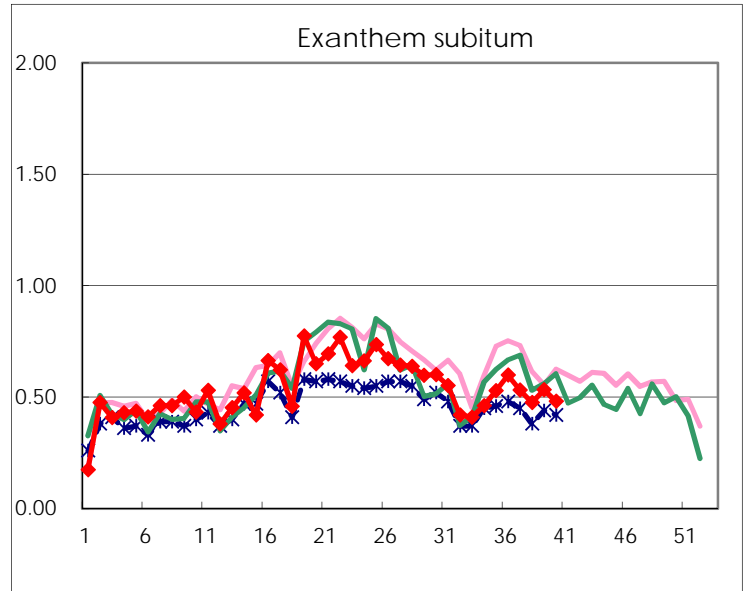
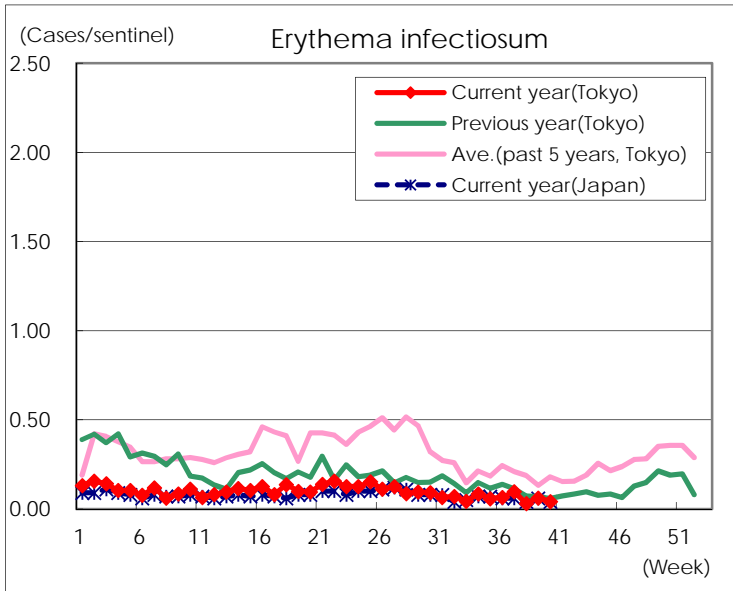
Number of patients with the diseases to be reported
by the designated clinics and hospitals

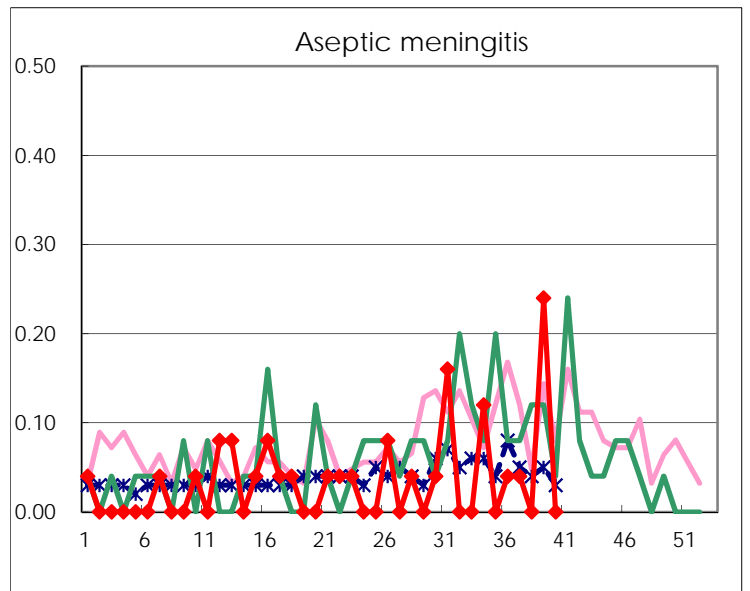
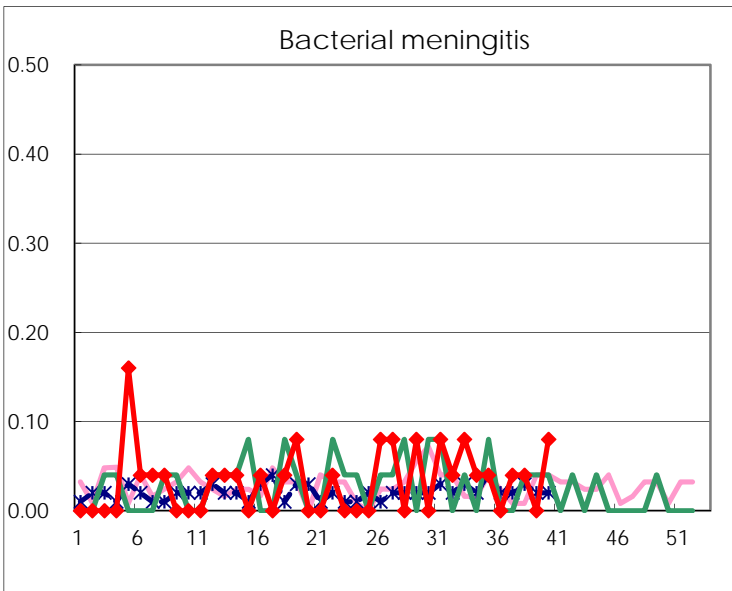
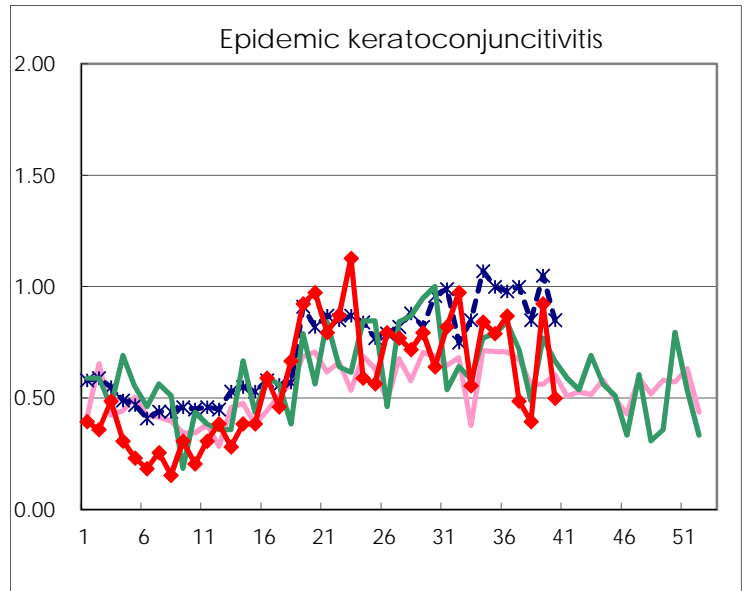
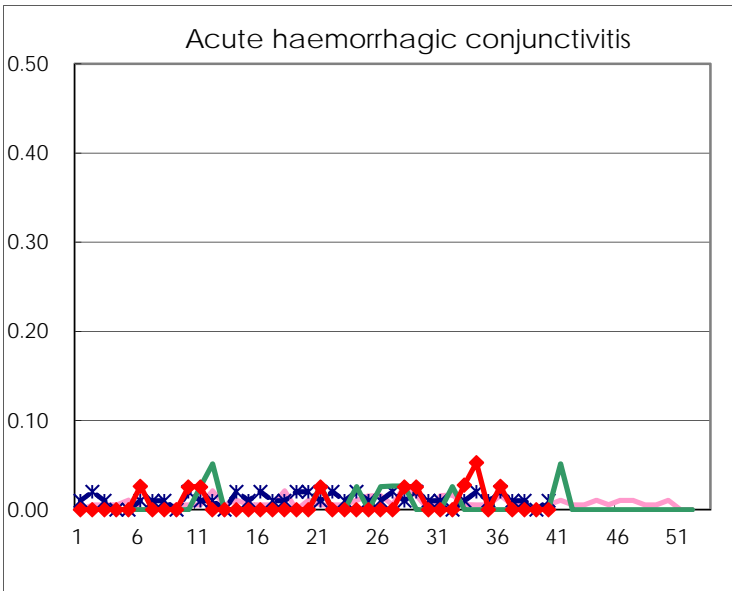
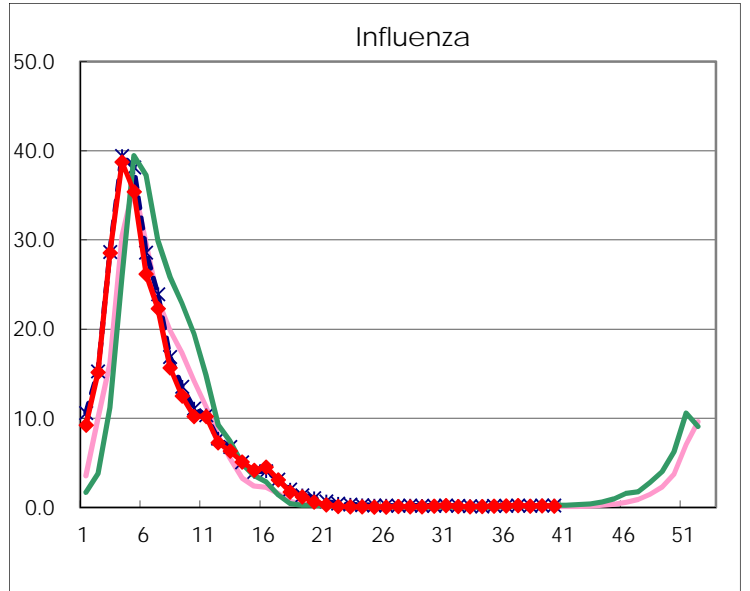
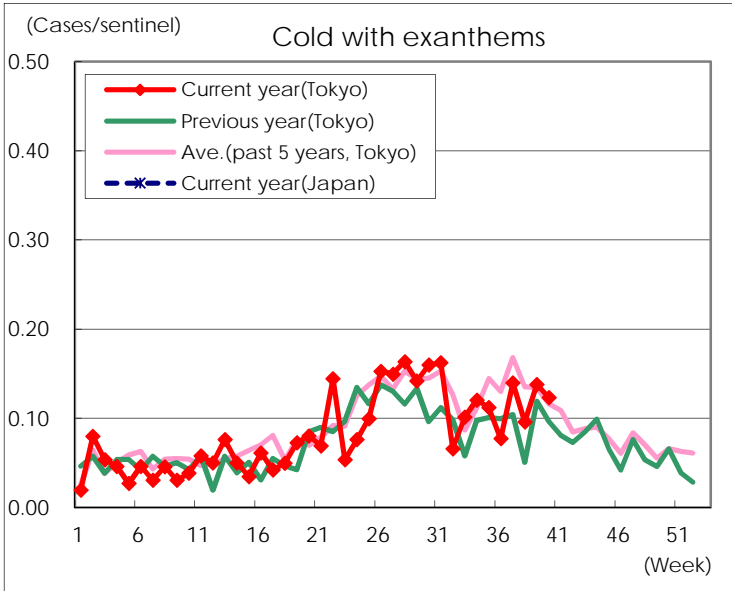
Diseases	Tokyo				
	37th	38th	39th	40th	/sentinel
Respiratory syncytial virus infection	659	441	381	279	1.07
Pharyngoconjunctival fever	114	88	111	82	0.32
Group A streptococcal pharyngitis	410	318	419	461	1.77
Infectious gastroenteritis	931	710	856	882	3.39
Chickenpox	50	43	61	46	0.18
Hand, foot, and mouth disease	1,707	1,075	1,026	849	3.27
Erythema infectiosum	25	8	16	11	0.04
Exanthem subitum	137	124	139	125	0.48
Pertussis	3	1	2	1	
Herpangina	328	219	268	191	0.73
Mumps	43	38	44	41	0.16
Kawasaki disease	5	3	3	4	0.02
Cold with exanthems	36	25	36	32	0.12
Influenza	88	67	79	54	0.13
Acute hemorrhagic conjunctivitis					
Epidemic keratoconjunctivitis	19	15	36	19	0.50
Bacterial meningitis	1	1		2	0.08
Aseptic meningitis	1		6		
Mycoplasma pneumonia	1	4	6	1	0.04
Chlamydial pneumonia (excluding psittacosis)	1			2	0.08
Infectious gastroenteritis (only by Rotavirus)					
Influenza-Associated Hospitalizations	2	3	3		

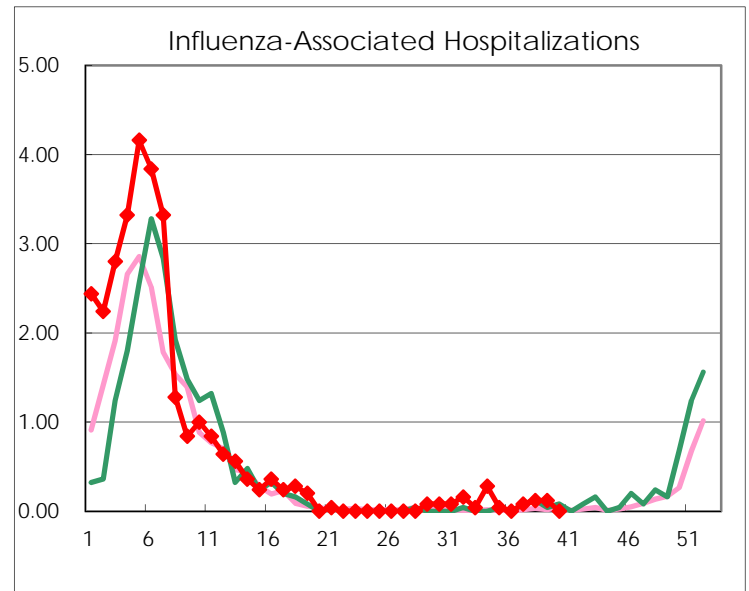
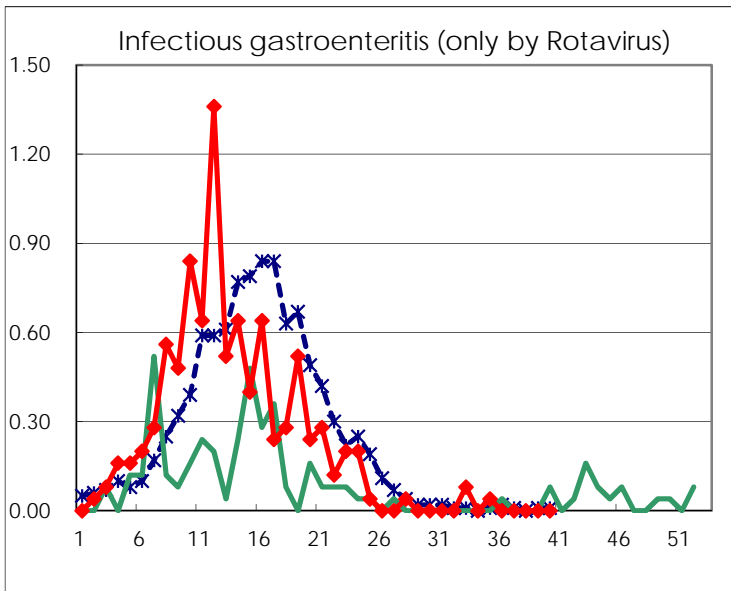
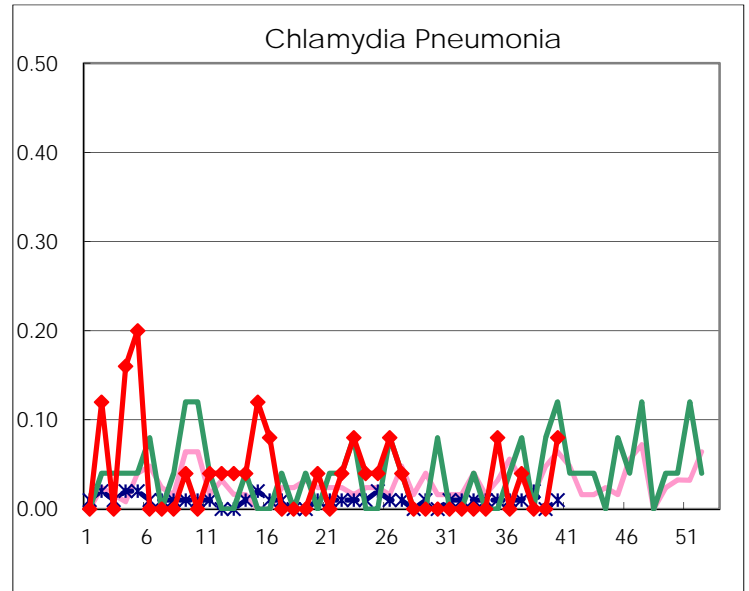
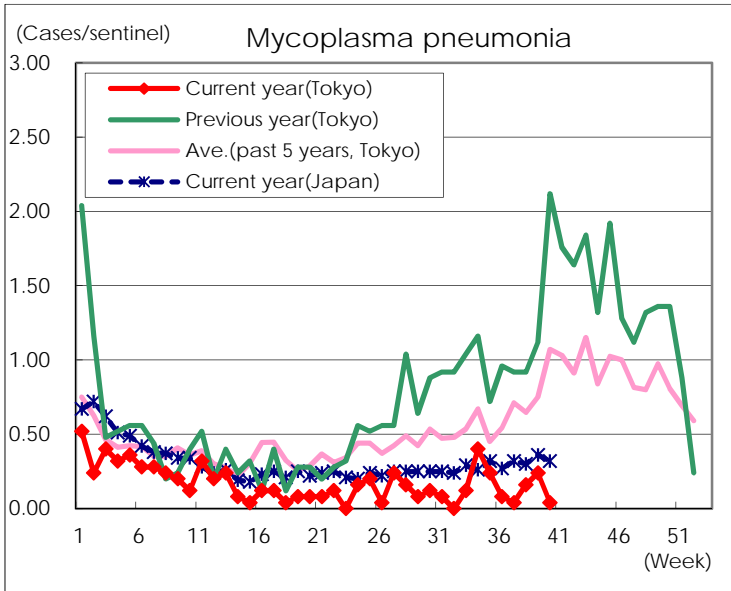
(Blank means 0.)

Disease Trend Graph (weekly reported cases per sentinel in comparison)









Number of sentinel facilities for weekly reporting		
Types of sentinels	Number of sentinels	Sentinels having reported
Pediatric	264	260
Influenza	419	410
Ophthalmic	39	38
Specially-designated	25	25