

9 November 2017 / Number 44

Surveillance System in Tokyo, Japan

The infectious diseases which all physicians must report

All physicians must report to health centers the incidence of the diseases which are shown at page one. Health centers electronically report the individual cases to Tokyo Metropolitan Infectious Disease Surveillance Center.

The infectious diseases required to be reported by the sentinels

The numbers of patients who visit the sentinel clinics or hospitals during a week are reported to health centers in Tokyo. And they electronically report the numbers to Tokyo Metropolitan Infectious Disease Surveillance Center. We have about 500 sentinel clinics and hospitals in Tokyo.

Tokyo Metropolitan Institute of Public Health

TEL:81-3-3363-3213 FAX:81-3-5332-7365

e-mail:www@tokyo-eiken.go.jp

URL:idsc.tokyo-eiken.go.jp/

Number of patients with the diseases which all physicians must report

Category	Diseases	Tokyo					Japan	
		41st	42nd	43rd	44th	Cum 2017	44th	Cum 2017
I	Ebola hemorrhagic fever							
	Crimean-Congo hemorrhagic fever							
	Smallpox							
	South American hemorrhagic fever							
	Plague							
	Marburg disease							
	Lassa fever							
II	Acute poliomyelitis							
	Tuberculosis	52	81	55	67	2,902	298	19,155
	Diphtheria							
	Severe Acute Respiratory Syndrome(SARS)							
	Middle East Respiratory Syndrome (MERS)							
	Avian influenza H5N1							
	Avian influenza H7N9							
III	Cholera					2		7
	Shigellosis			1	1	31	1	124
	Enterohemorrhagic Escherichia coli infection	13	6	7	2	445	72	3,657
	Typhoid fever					8	1	34
	Paratyphoid fever					6		13
IV	Hepatitis E			1		50	2	268
	West Nile fever							
	Hepatitis A		4	1	1	60	2	246
	Echinococcosis					1		22
	Yellow fever							
	Psittacosis							11
	Omsk hemorrhagic fever							
	Relapsing fever					2		8
	Kyasanur forest disease							
	Q fever							
	Rabies							
	Coccidioidomycosis					1		1
	Monkeypox							
	Zika virus infection							3
	Severe Fever with Thrombocytopenia Syndrome							86
	Hemorrhagic fever with renal syndrome							
	Western equine encephalitis							
	Tick-borne encephalitis							2
	Anthrax							
	Chikungunya fever					2		4
	Scrub typhus(Tsutsugamushi disease)					3	6	128
	Dengue fever		2	2		61	1	223
	Eastern equine encephalitis							
	Avian influenza (excluding H5N1 and H7N9)							
	Nipah virus infection							
	Japanese spotted fever					1	1	314
	Japanese encephalitis							1
	Hantavirus pulmonary syndrome							
	Herpes B virus infection							
	Glanders							
	Brucellosis							1
	Venezuelan equine encephalitis							
Hendra virus infection								
Epidemic typhus								
Botulism					1		3	
Malaria		1			2	25	4	54
Tularemia								
Lyme disease						1		18
Lyssavirus infection(excluding rabies)								
Rift valley fever								
Melioidosis						1		1
Legionellosis		6	2	4	3	134	52	1,529
Leptospirosis		1	1		1	9	1	40
	Rocky mountain spotted fever							

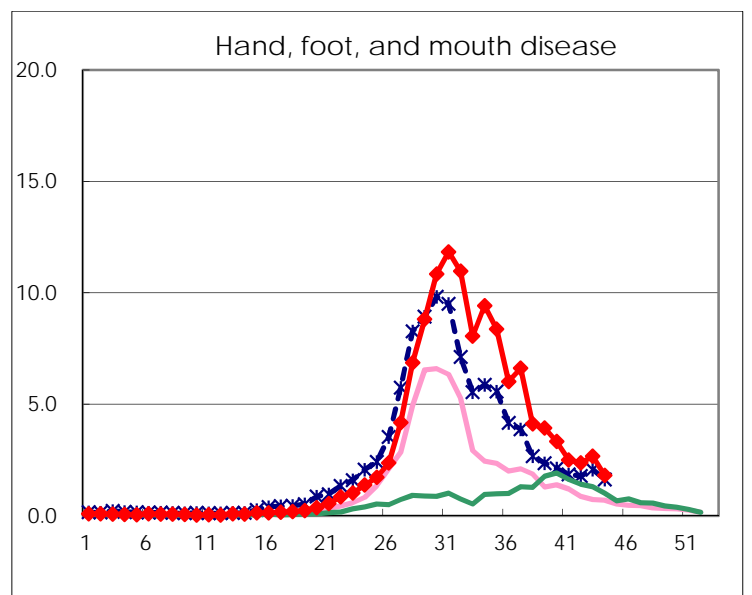
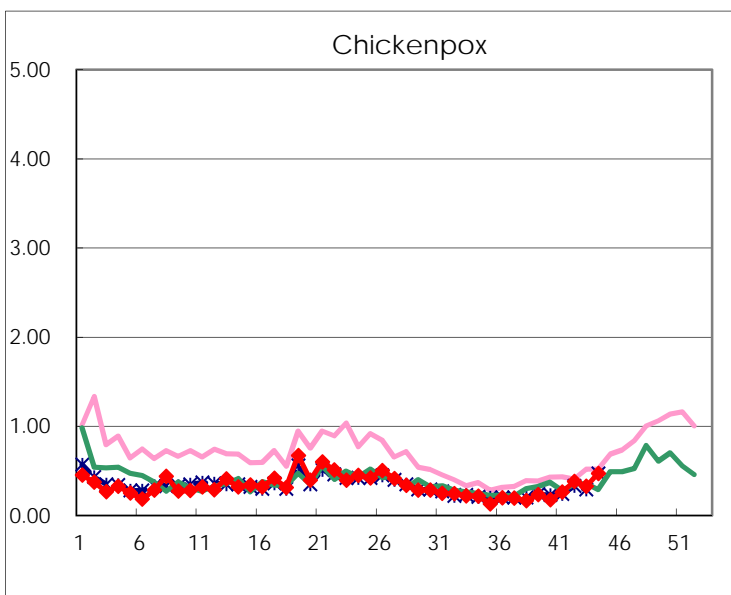
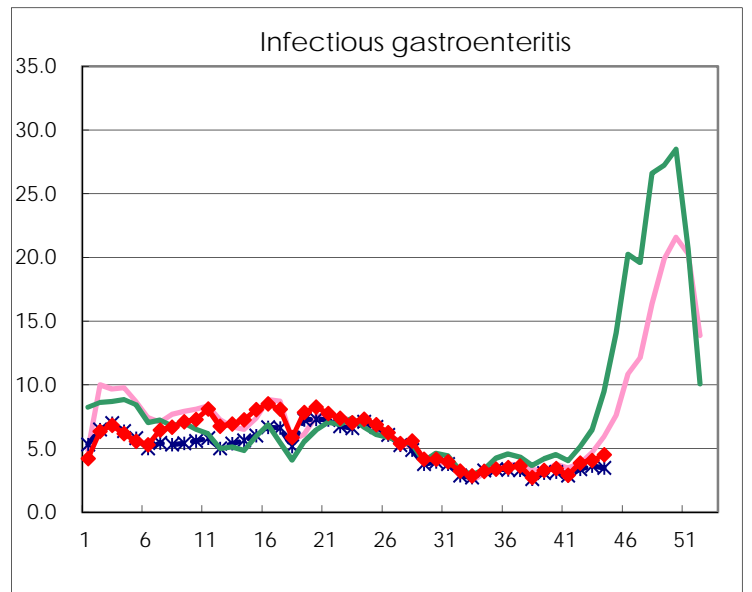
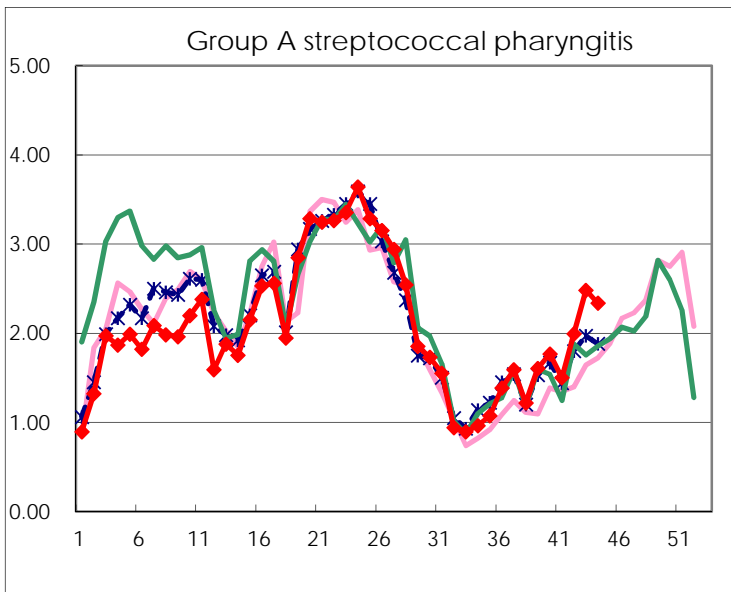
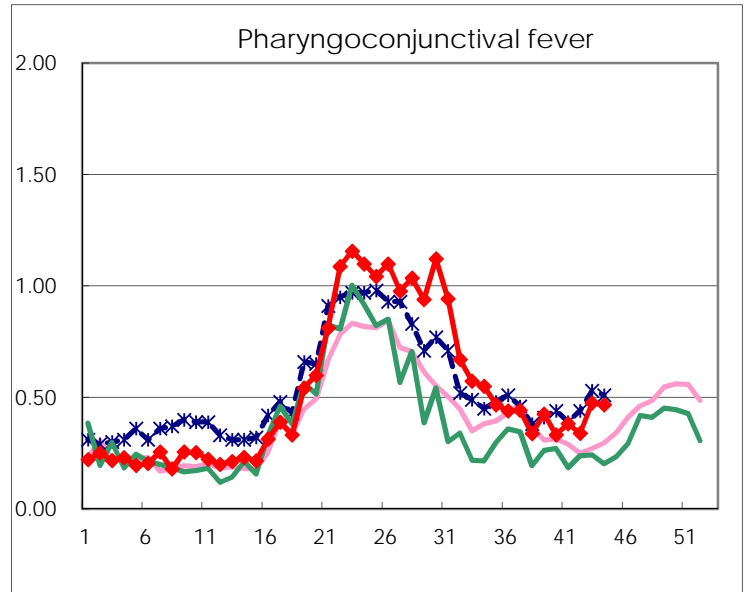
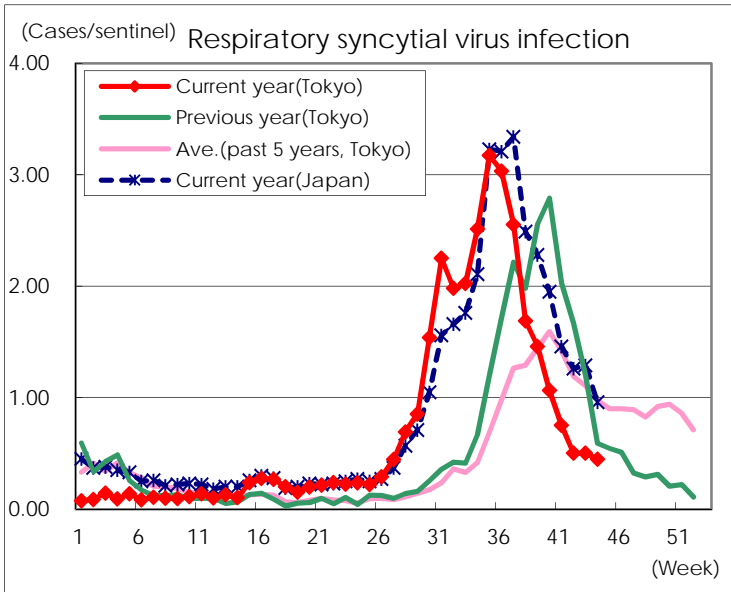
Category	Diseases	Tokyo					Japan	
		41st	42nd	43rd	44th	Cum 2017	44th	Cum 2017
V	Amebiasis	5	4	6	5	182	12	906
	Viral hepatitis(excluding hepatitis A and E)	1		2		52	2	246
	CRE infection	7	8	9	1	186	23	1,412
	Acute encephalitis(excluding JE and WNE)	1			1	60	3	572
	Cryptosporidiosis			1		2		12
	Creutzfeldt-Jakob disease			1	1	15	1	170
	Severe invasive streptococcal infections(TSLS)		2	1	2	62	8	458
	Acquired immunodeficiency syndrome (AIDS)	9	13	10	5	396	10	1,165
	Giardiasis					22		48
	Invasive <i>Haemophilus influenzae</i> disease				1	45	7	304
	Invasive meningococcal disease	1				3		23
	Invasive pneumococcal disease	5	7	3	5	334	19	2,603
	Varicella (limited to hospitalized case)	3		1	2	46	2	255
	Congenital rubella syndrome							
	Syphilis	26	34	36	26	1,506	49	4,813
	Disseminated cryptococcosis		1	1		13		112
	Tetanus		1		1	6		108
	Vancomycin-resistant <i>S. aureus</i> infection							
	Vancomycin-resistant Enterococcus infection					7	1	66
	Rubella	1				21		80
Measles					28		188	
MDRA infection			1	1	5		21	

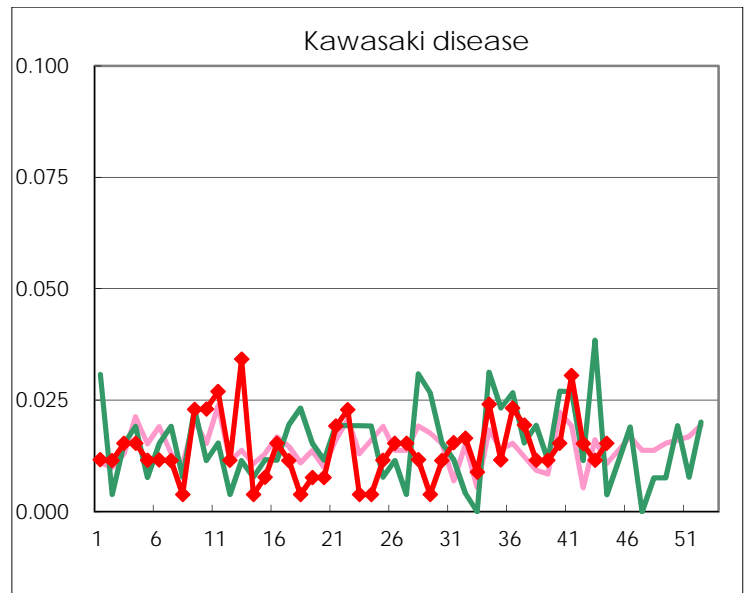
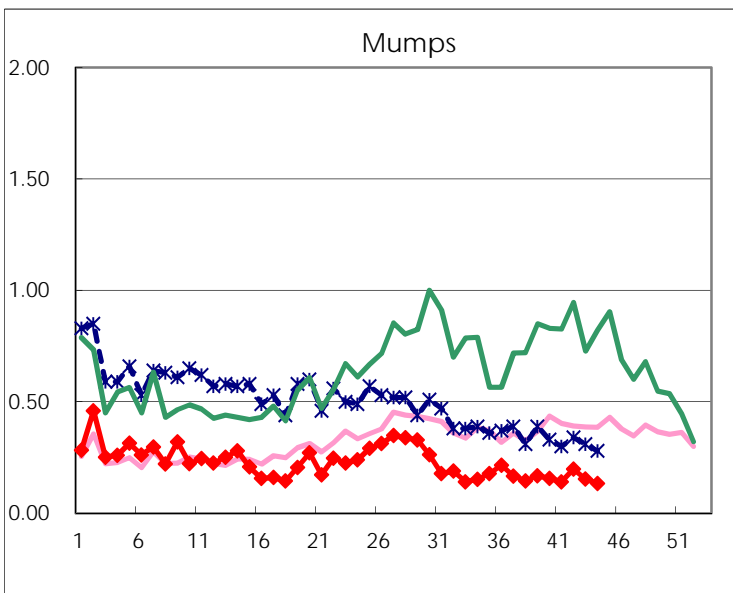
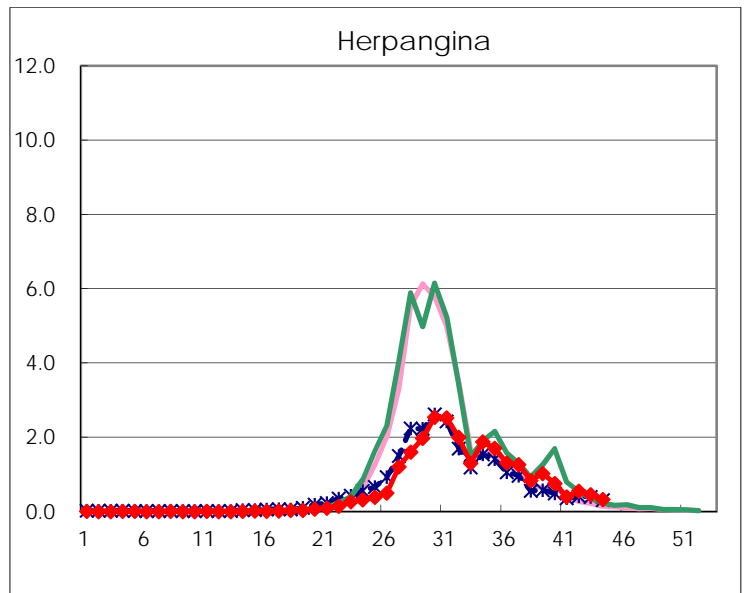
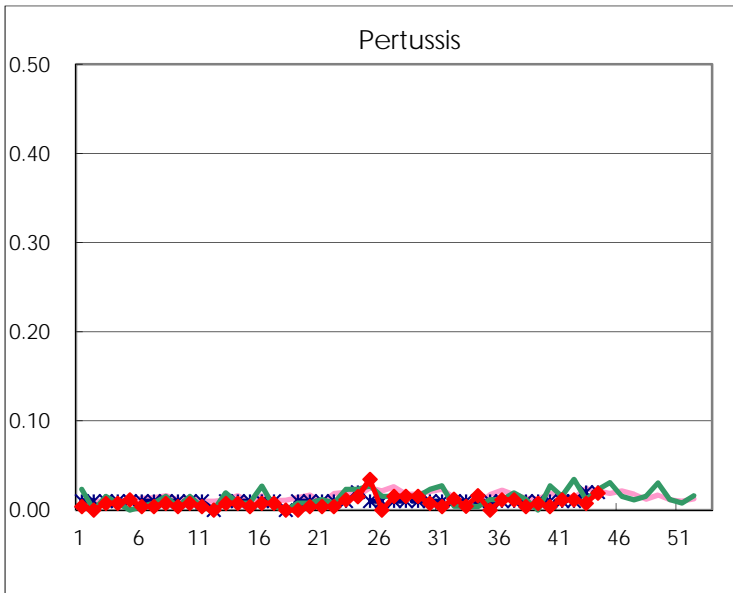
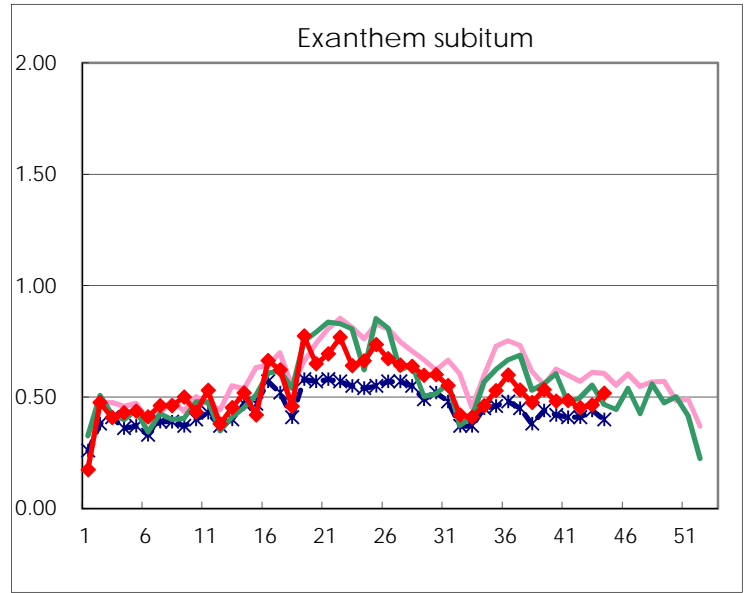
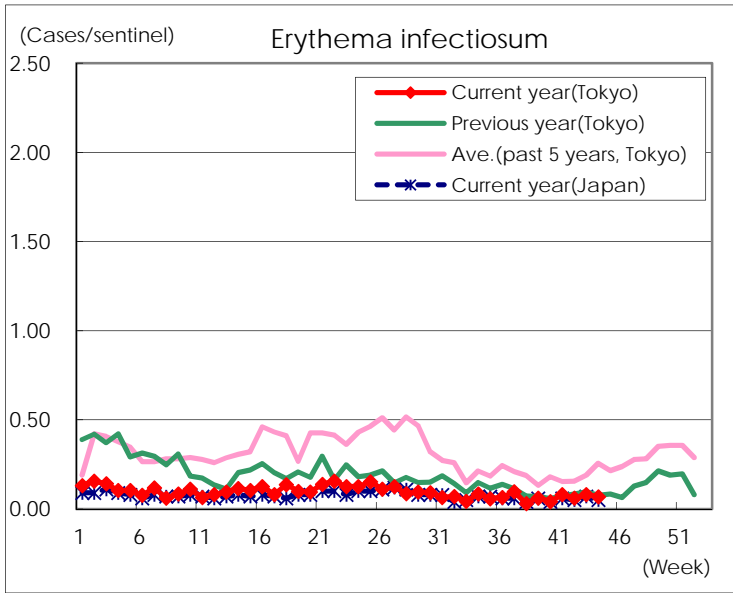
Number of patients with the diseases to be reported
by the designated clinics and hospitals

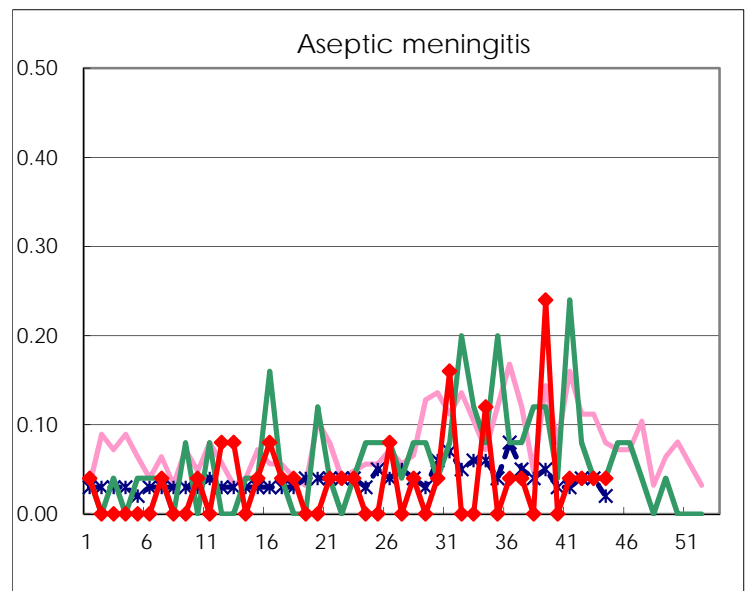
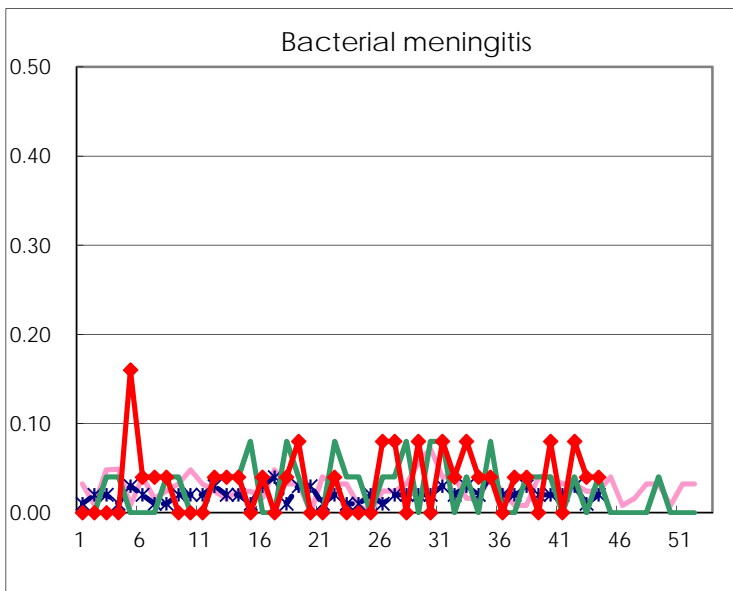
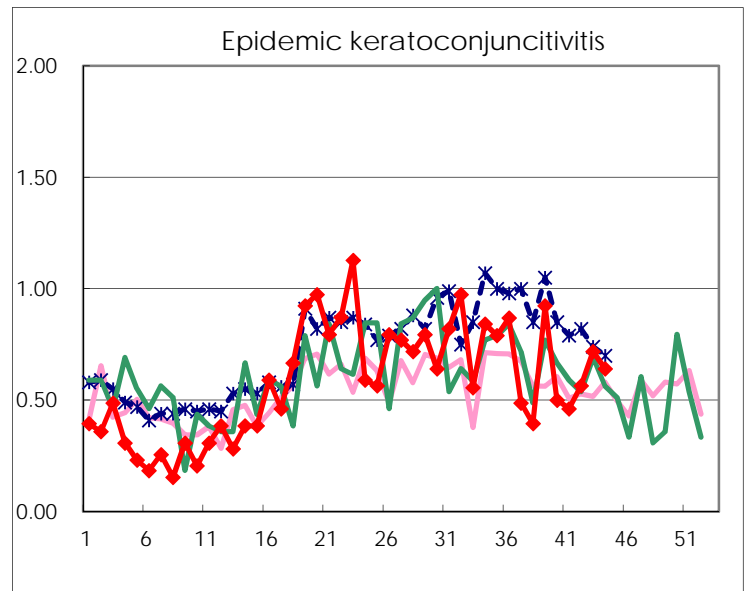
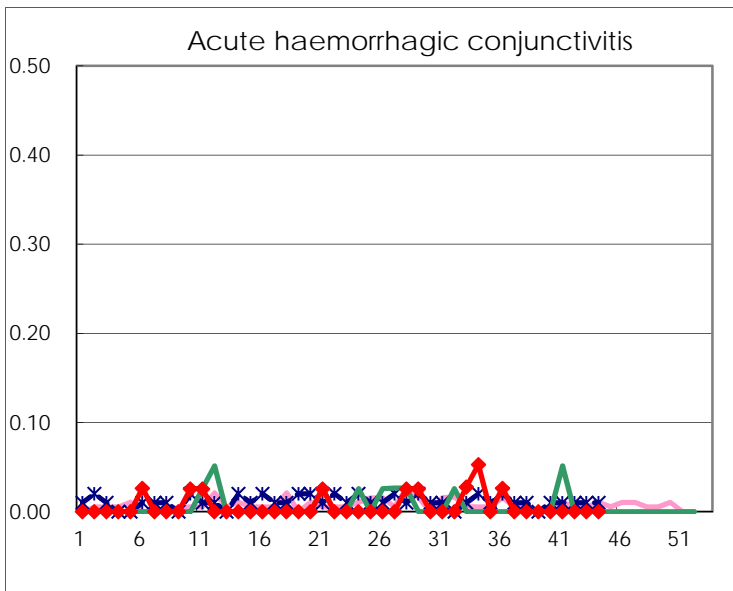
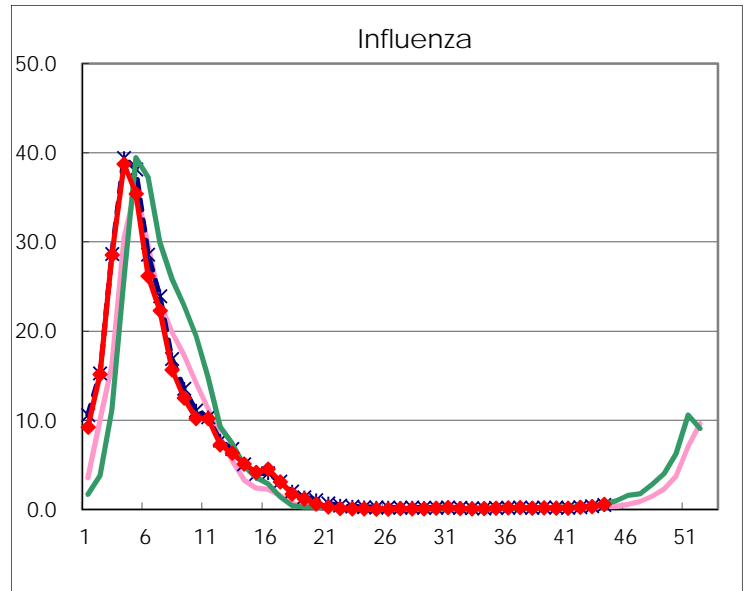
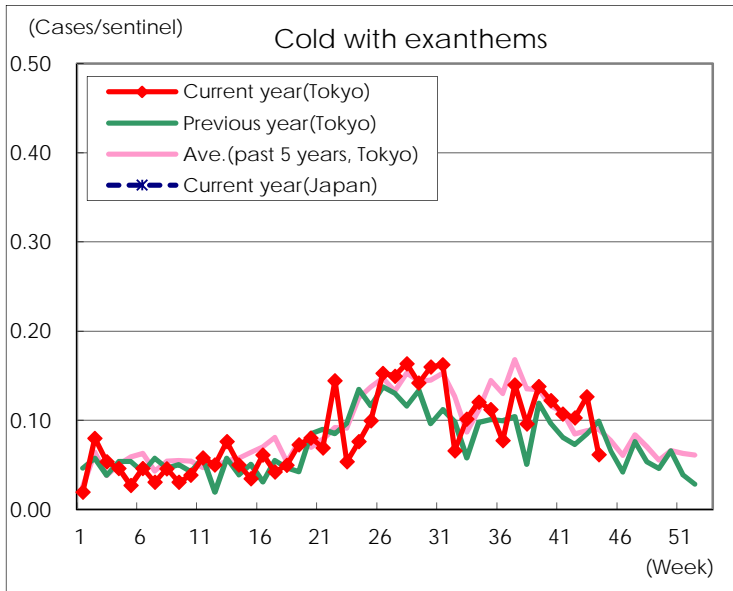
Diseases	Tokyo				
	41st	42nd	43rd	44th	/sentinel
Respiratory syncytial virus infection	197	132	131	117	0.45
Pharyngoconjunctival fever	100	89	124	122	0.47
Group A streptococcal pharyngitis	393	524	648	610	2.34
Infectious gastroenteritis	755	1,015	1,058	1,174	4.50
Chickenpox	69	100	85	123	0.47
Hand, foot, and mouth disease	656	623	697	474	1.82
Erythema infectiosum	21	16	21	18	0.07
Exanthem subitum	127	119	121	135	0.52
Pertussis	3	3	2	5	0.02
Herpangina	105	146	119	86	0.33
Mumps	37	52	40	35	0.13
Kawasaki disease	8	4	3	4	0.02
Cold with exanthems	28	27	33	16	0.06
Influenza	68	99	142	233	0.56
Acute hemorrhagic conjunctivitis					
Epidemic keratoconjunctivitis	18	22	28	25	0.64
Bacterial meningitis		2	1	1	0.04
Aseptic meningitis	1	1	1	1	0.04
Mycoplasma pneumonia	9	6	6	8	0.32
Chlamydial pneumonia (excluding psittacosis)		1		1	0.04
Infectious gastroenteritis (only by Rotavirus)					
Influenza-Associated Hospitalizations				1	0.04

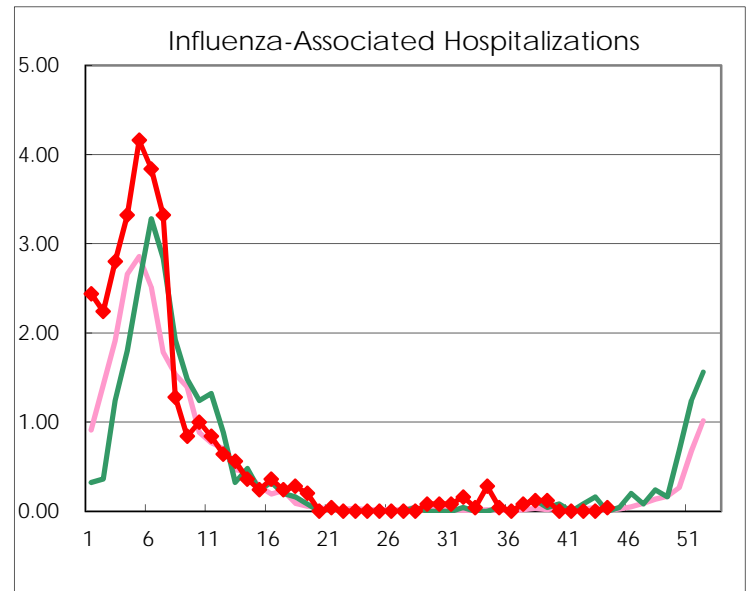
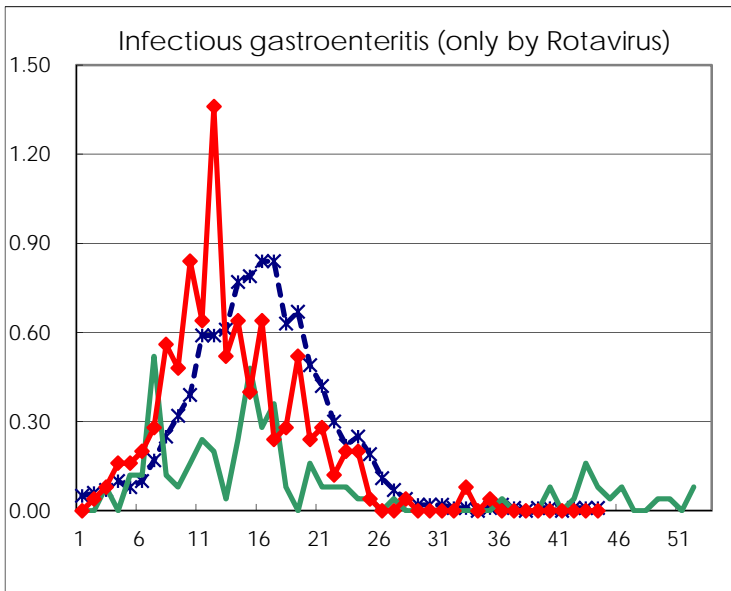
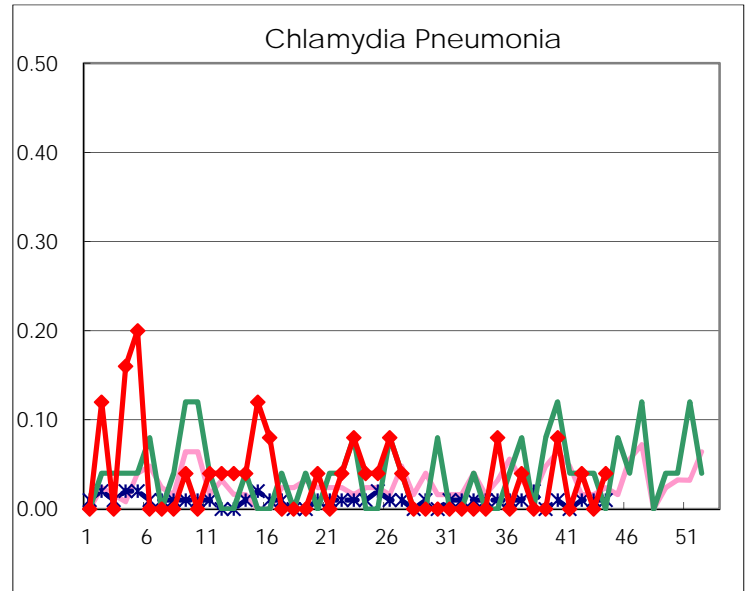
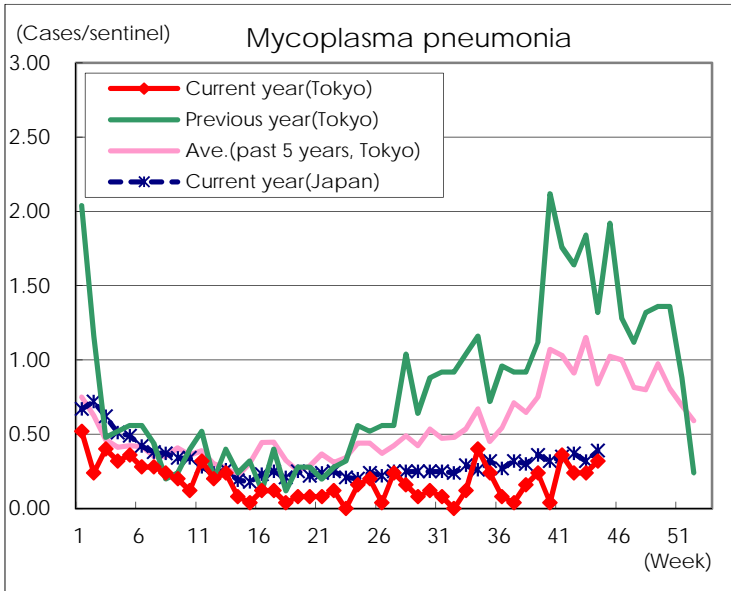
(Blank means 0.)

Disease Trend Graph (weekly reported cases per sentinel in comparison)









Number of sentinel facilities for weekly reporting		
Types of sentinels	Number of sentinels	Sentinels having reported
Pediatric	264	261
Influenza	419	414
Ophthalmic	39	39
Specially-designated	25	25