

16 November 2017 / Number 45

Surveillance System in Tokyo, Japan

The infectious diseases which all physicians must report

All physicians must report to health centers the incidence of the diseases which are shown at page one. Health centers electronically report the individual cases to Tokyo Metropolitan Infectious Disease Surveillance Center.

The infectious diseases required to be reported by the sentinels

The numbers of patients who visit the sentinel clinics or hospitals during a week are reported to health centers in Tokyo. And they electronically report the numbers to Tokyo Metropolitan Infectious Disease Surveillance Center. We have about 500 sentinel clinics and hospitals in Tokyo.

Tokyo Metropolitan Institute of Public Health

TEL:81-3-3363-3213 FAX:81-3-5332-7365

e-mail:www@tokyo-eiken.go.jp

URL:idsc.tokyo-eiken.go.jp/

Number of patients with the diseases which all physicians must report

Category	Diseases	Tokyo					Japan	
		42nd	43rd	44th	45th	Cum 2017	45th	Cum 2017
I	Ebola hemorrhagic fever							
	Crimean-Congo hemorrhagic fever							
	Smallpox							
	South American hemorrhagic fever							
	Plague							
	Marburg disease							
	Lassa fever							
II	Acute poliomyelitis							
	Tuberculosis	81	55	68	66	2,968	338	19,622
	Diphtheria							
	Severe Acute Respiratory Syndrome(SARS)							
	Middle East Respiratory Syndrome (MERS)							
	Avian influenza H5N1							
	Avian influenza H7N9							
III	Cholera					2		7
	Shigellosis		1	1		31		124
	Enterohemorrhagic Escherichia coli infection	6	7	2	5	450	48	3,707
	Typhoid fever					8	1	35
	Paratyphoid fever					6		13
IV	Hepatitis E		1		3	53	7	278
	West Nile fever							
	Hepatitis A	4	1	1		60	1	247
	Echinococcosis					1		22
	Yellow fever							
	Psittacosis							11
	Omsk hemorrhagic fever							
	Relapsing fever					2		8
	Kyasanur forest disease							
	Q fever							
	Rabies							
	Coccidioidomycosis					1		1
	Monkeypox							
	Zika virus infection							3
	Severe Fever with Thrombocytopenia Syndrome							87
	Hemorrhagic fever with renal syndrome							
	Western equine encephalitis							
	Tick-borne encephalitis							2
	Anthrax							
	Chikungunya fever					2		4
	Scrub typhus(Tsutsugamushi disease)			1	1	5	19	152
	Dengue fever	2	2		3	64	6	229
	Eastern equine encephalitis							
	Avian influenza (excluding H5N1 and H7N9)							
	Nipah virus infection							
	Japanese spotted fever					1	2	318
	Japanese encephalitis							1
	Hantavirus pulmonary syndrome							
	Herpes B virus infection							
	Glanders							
	Brucellosis						1	2
	Venezuelan equine encephalitis							
Hendra virus infection								
Epidemic typhus								
Botulism					1		3	
Malaria	1		2		25		54	
Tularemia								
Lyme disease					1		18	
Lyssavirus infection(excluding rabies)								
Rift valley fever								
Melioidosis					1		1	
Legionellosis	2	4	3	6	140	34	1,570	
Leptospirosis	1		1		9		40	
Rocky mountain spotted fever								

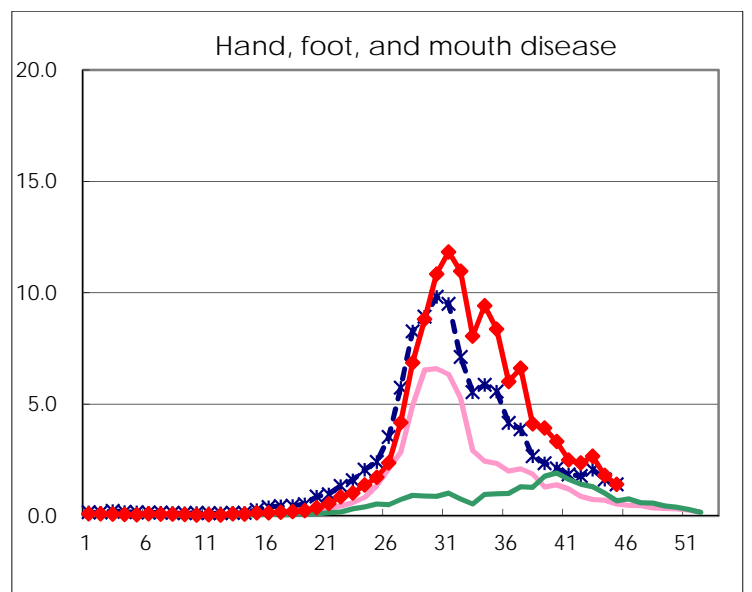
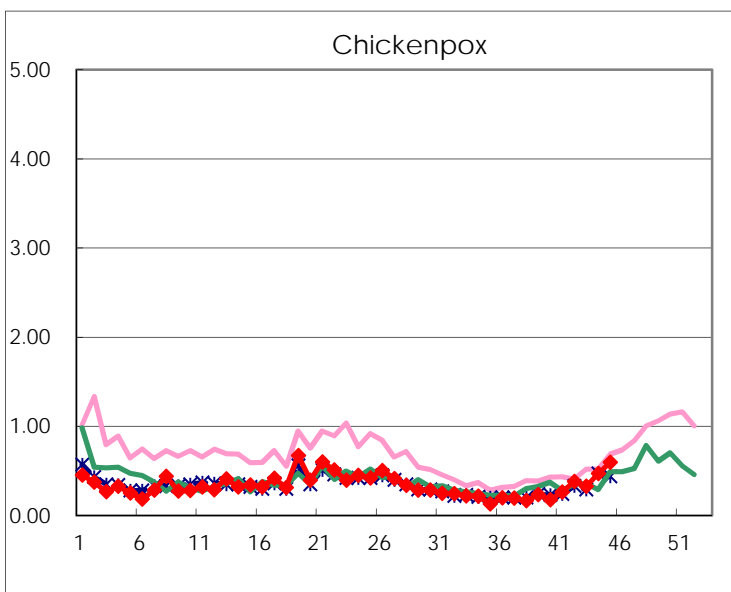
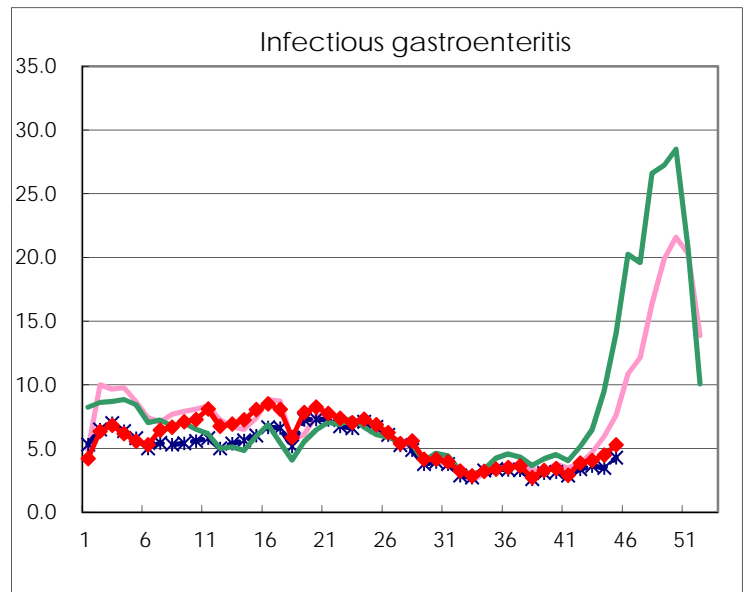
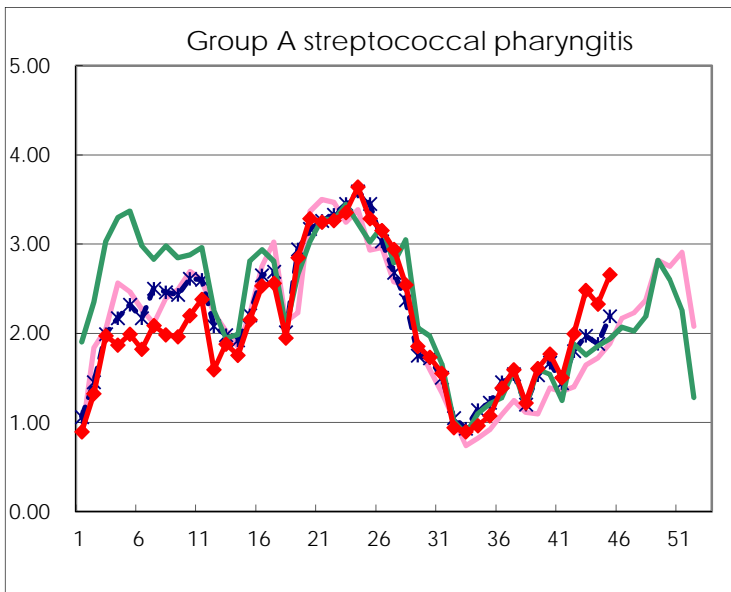
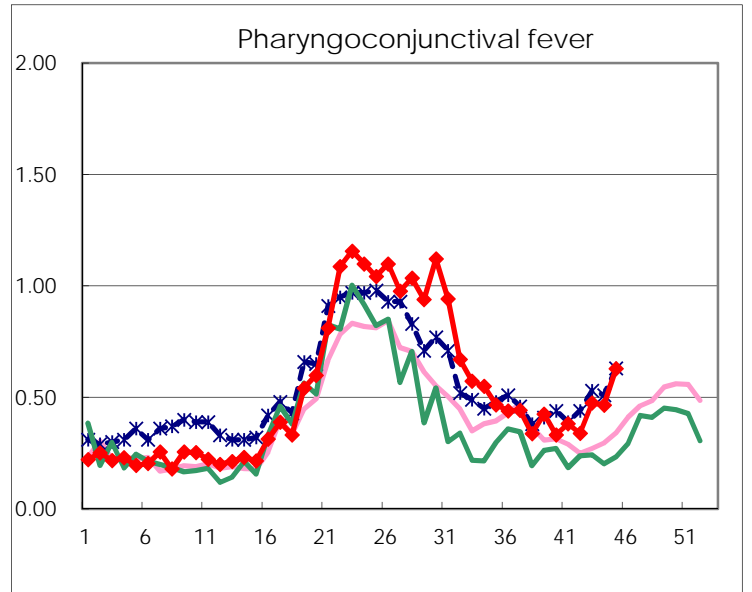
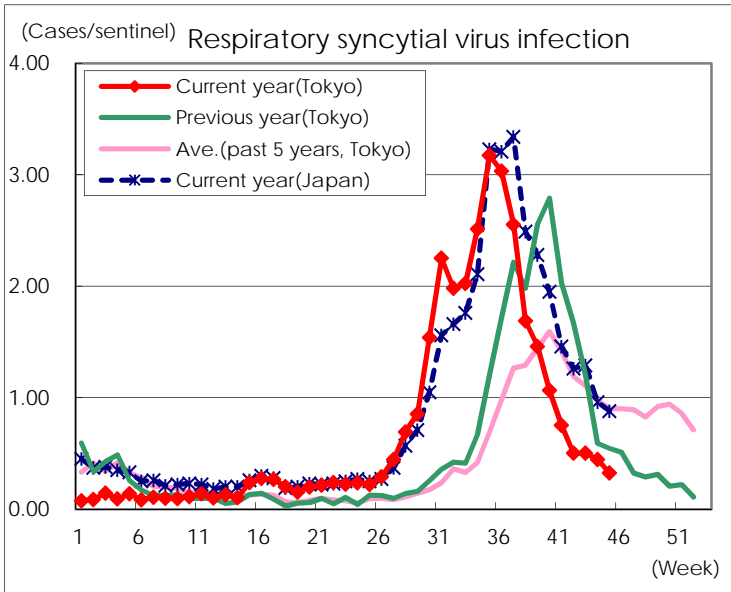
Category	Diseases	Tokyo					Japan	
		42nd	43rd	44th	45th	Cum 2017	45th	Cum 2017
V	Amebiasis	4	6	5	8	190	17	927
	Viral hepatitis(excluding hepatitis A and E)		2		2	54	5	253
	CRE infection	8	9	2	6	193	22	1,446
	Acute encephalitis(excluding JE and WNE)			1	1	61	12	589
	Cryptosporidiosis		1			2		12
	Creutzfeldt-Jakob disease		1	1		15	2	173
	Severe invasive streptococcal infections(TSLS)	2	1	2	1	63	8	472
	Acquired immunodeficiency syndrome (AIDS)	13	10	5	13	410	18	1,197
	Giardiasis					22	2	50
	Invasive <i>Haemophilus influenzae</i> disease			1		45	2	311
	Invasive meningococcal disease					3		23
	Invasive pneumococcal disease	7	3	5	9	343	46	2,668
	Varicella (limited to hospitalized case)		1	2		46	4	260
	Congenital rubella syndrome							
	Syphilis	34	36	26	44	1,550	95	4,951
	Disseminated cryptococcosis	1	1			13	2	115
	Tetanus	1		1		6	3	113
	Vancomycin-resistant <i>S. aureus</i> infection							
	Vancomycin-resistant Enterococcus infection					7	1	68
	Rubella					21	1	81
Measles					28	1	189	
MDRA infection		1	1		5		22	

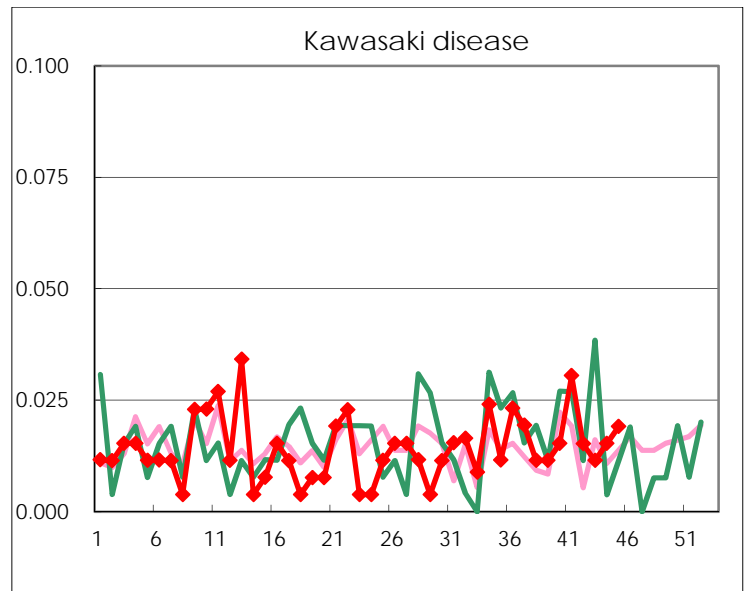
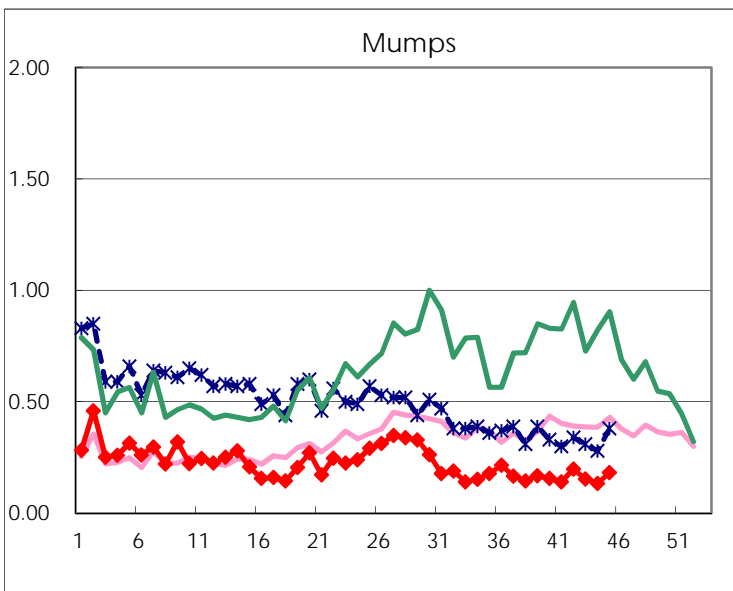
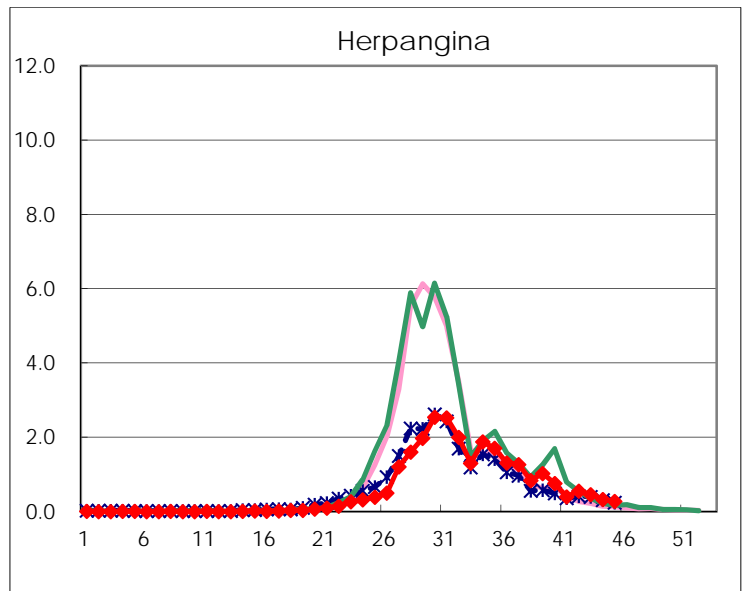
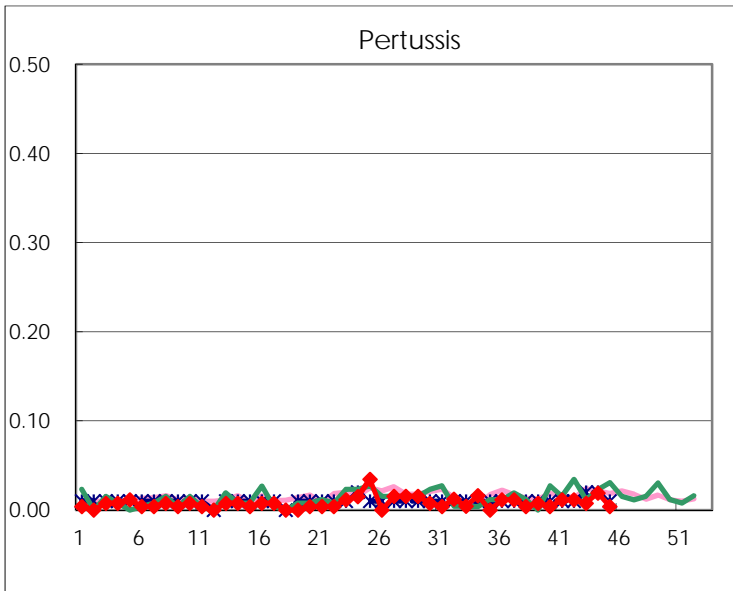
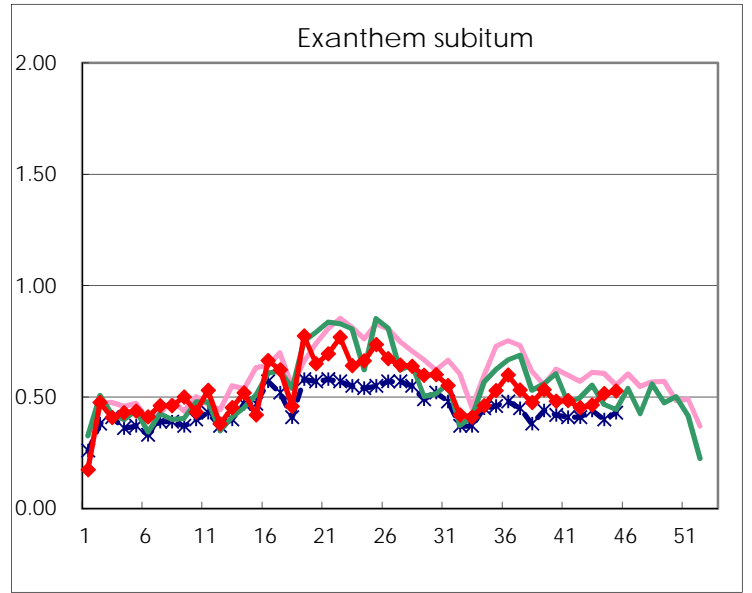
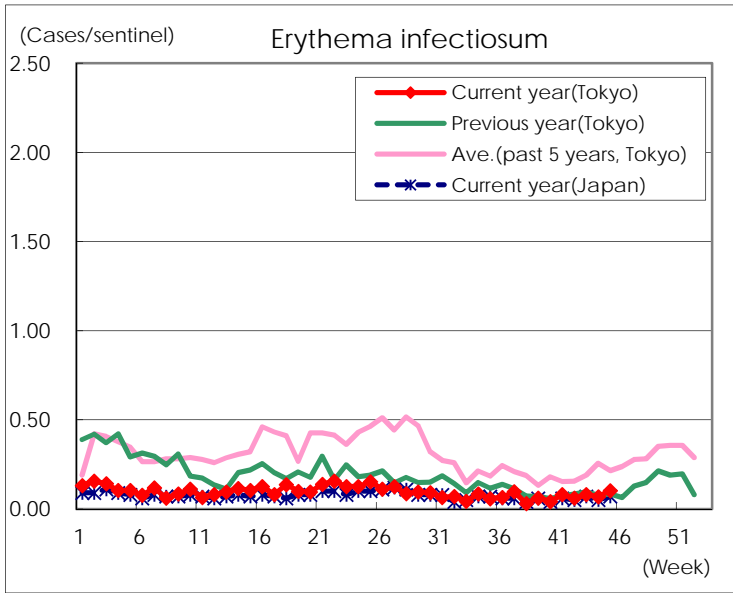
Number of patients with the diseases to be reported
by the designated clinics and hospitals

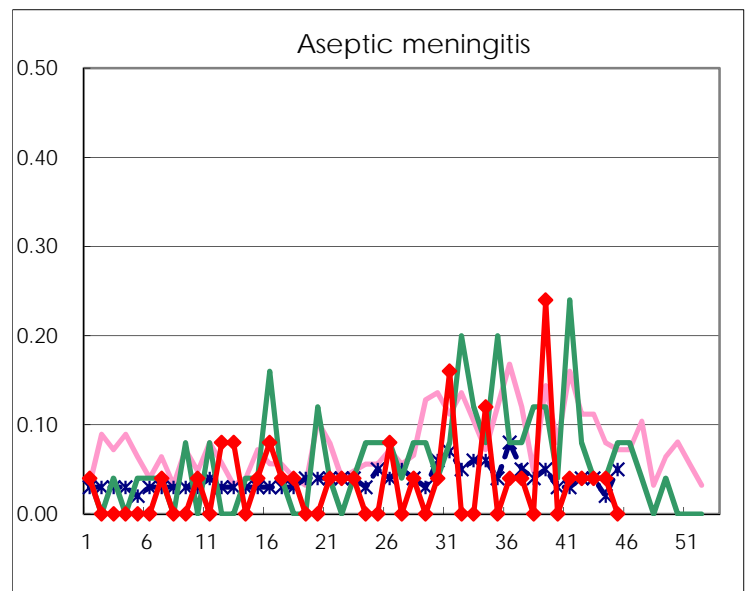
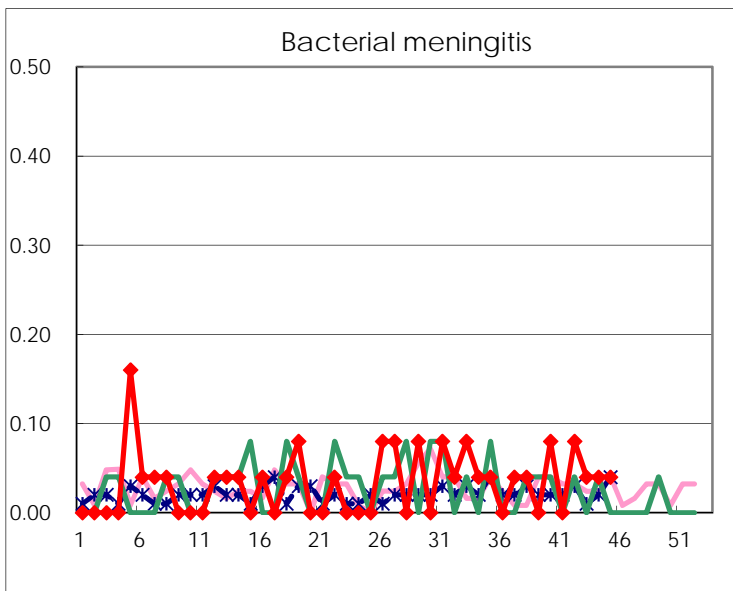
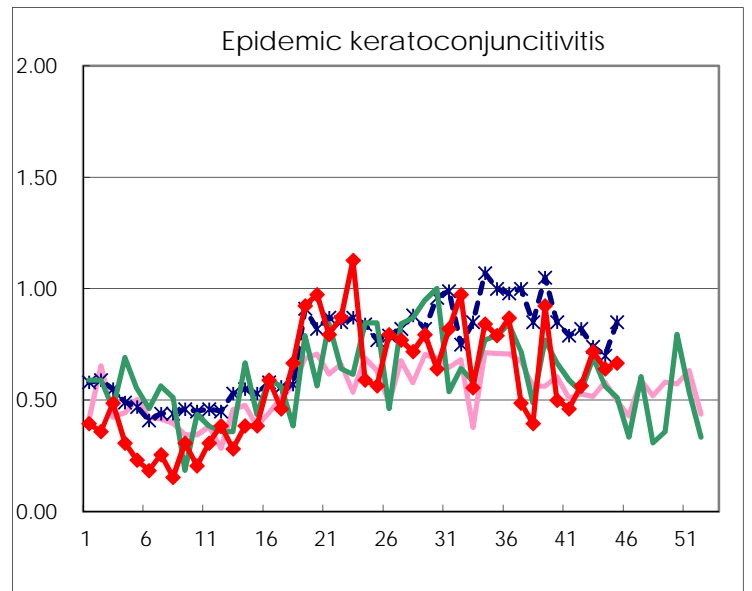
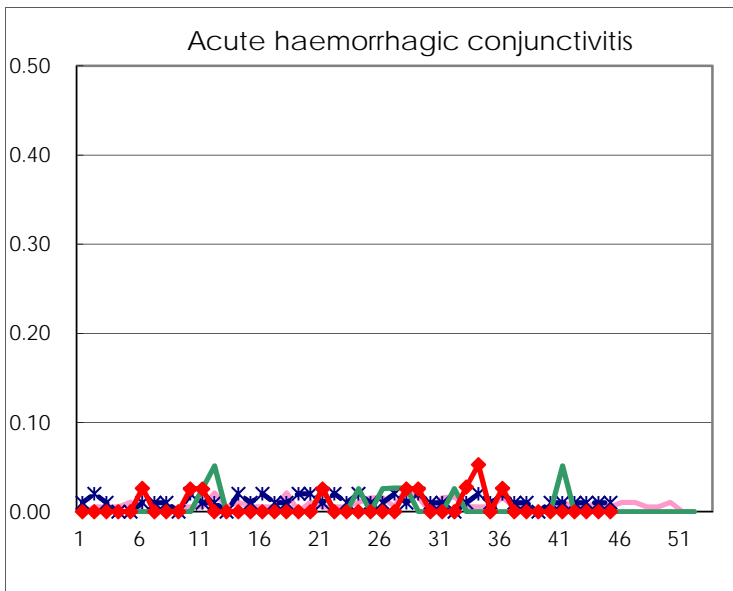
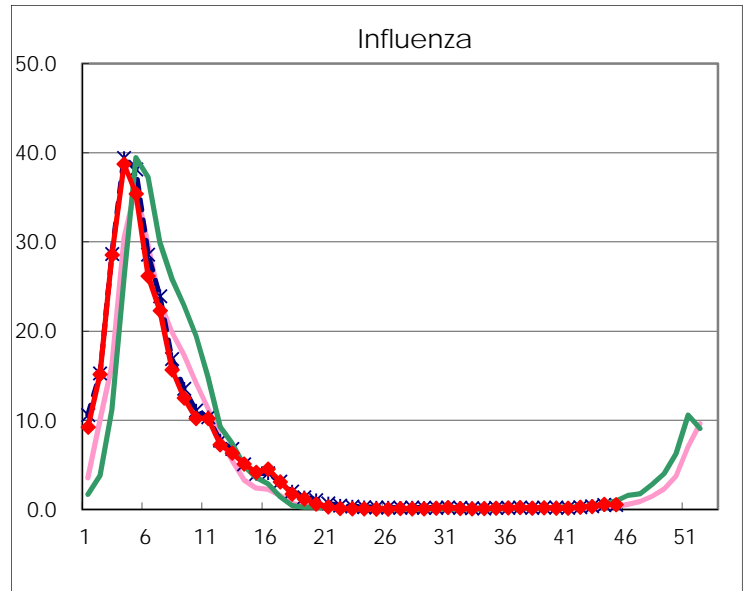
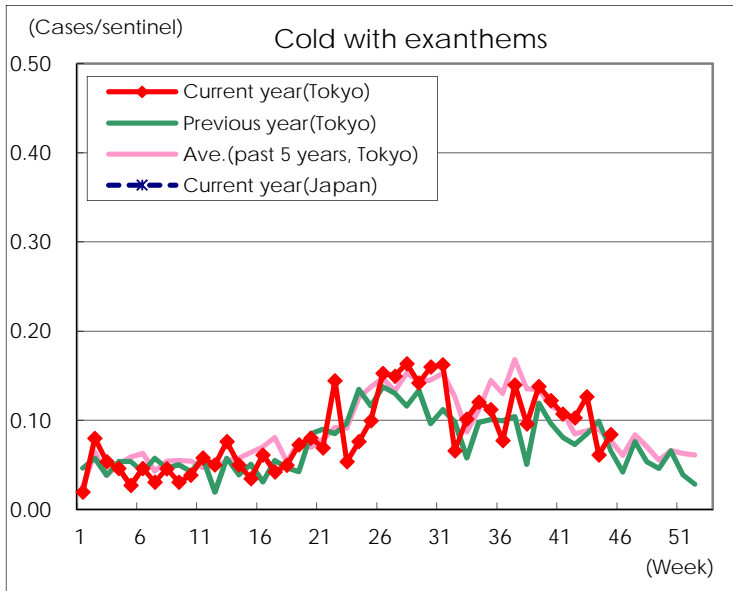
Diseases	Tokyo				
	42nd	43rd	44th	45th	/sentinel
Respiratory syncytial virus infection	132	131	117	85	0.32
Pharyngoconjunctival fever	89	124	122	165	0.63
Group A streptococcal pharyngitis	524	648	610	696	2.66
Infectious gastroenteritis	1,015	1,058	1,174	1,382	5.27
Chickenpox	100	85	123	156	0.60
Hand, foot, and mouth disease	623	697	474	368	1.40
Erythema infectiosum	16	21	18	27	0.10
Exanthem subitum	119	121	135	138	0.53
Pertussis	3	2	5	1	
Herpangina	146	119	86	72	0.27
Mumps	52	40	35	48	0.18
Kawasaki disease	4	3	4	5	0.02
Cold with exanthems	27	33	16	22	0.08
Influenza	99	142	234	226	0.54
Acute hemorrhagic conjunctivitis					
Epidemic keratoconjunctivitis	22	28	25	26	0.67
Bacterial meningitis	2	1	1	1	0.04
Aseptic meningitis	1	1	1		
Mycoplasma pneumonia	6	6	8	11	0.44
Chlamydial pneumonia (excluding psittacosis)	1		1	1	0.04
Infectious gastroenteritis (only by Rotavirus)					
Influenza-Associated Hospitalizations			2	1	0.04

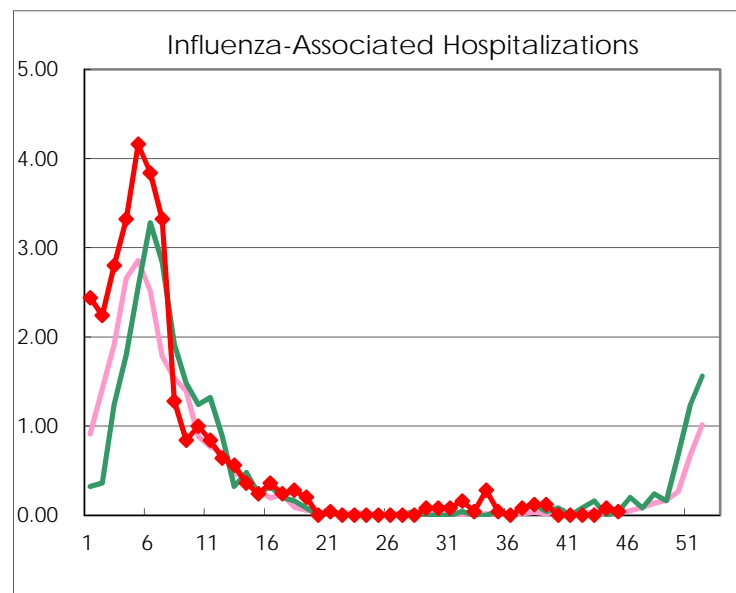
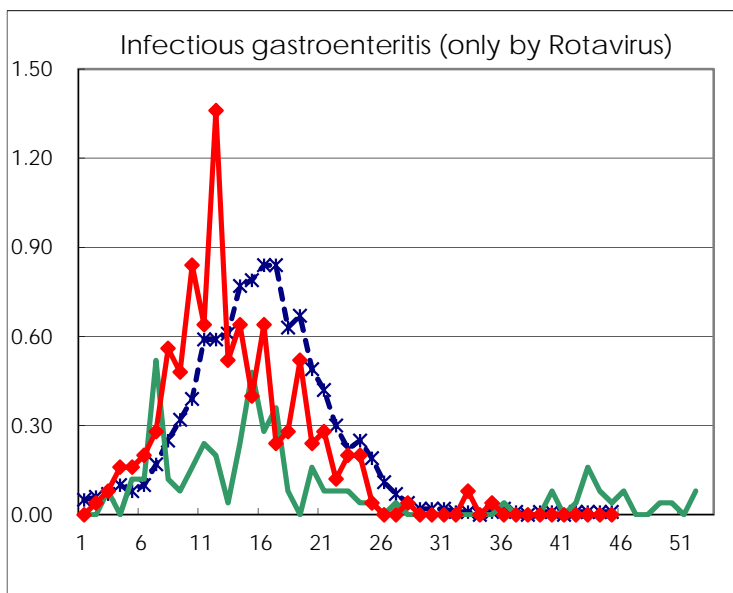
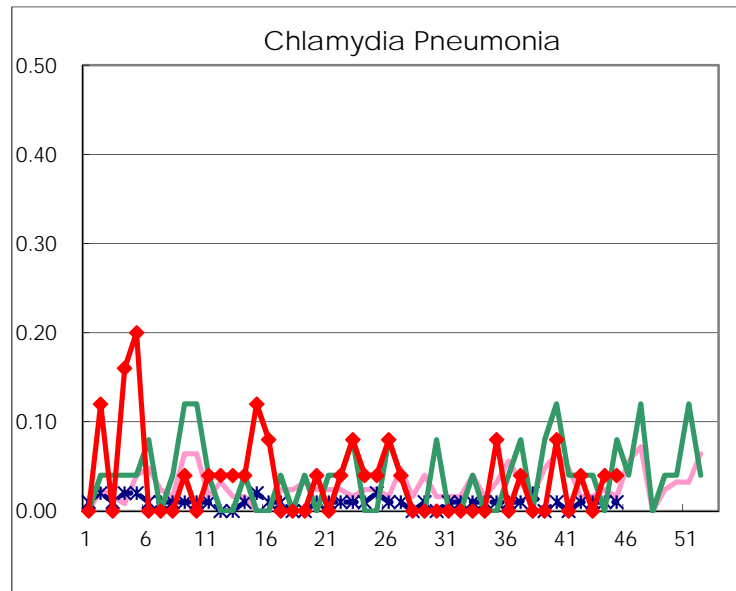
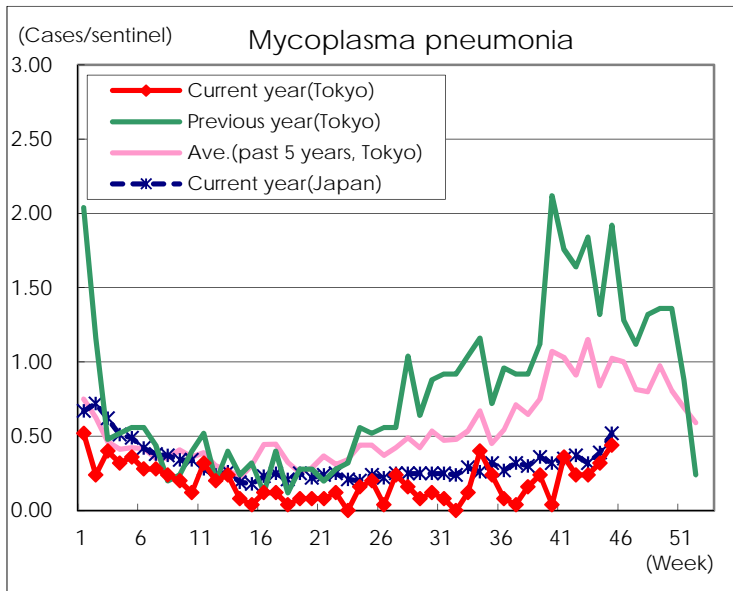
(Blank means 0.)

Disease Trend Graph (weekly reported cases per sentinel in comparison)









Number of sentinel facilities for weekly reporting		
Types of sentinels	Number of sentinels	Sentinels having reported
Pediatric	264	262
Influenza	419	416
Ophthalmic	39	39
Specially-designated	25	25