

30 November 2017 / Number 47

Surveillance System in Tokyo, Japan

The infectious diseases which all physicians must report

All physicians must report to health centers the incidence of the diseases which are shown at page one. Health centers electronically report the individual cases to Tokyo Metropolitan Infectious Disease Surveillance Center.

The infectious diseases required to be reported by the sentinels

The numbers of patients who visit the sentinel clinics or hospitals during a week are reported to health centers in Tokyo. And they electronically report the numbers to Tokyo Metropolitan Infectious Disease Surveillance Center. We have about 500 sentinel clinics and hospitals in Tokyo.

Tokyo Metropolitan Institute of Public Health

TEL:81-3-3363-3213 FAX:81-3-5332-7365

e-mail:www@tokyo-eiken.go.jp

URL:idsc.tokyo-eiken.go.jp/

Number of patients with the diseases which all physicians must report

Category	Diseases	Tokyo					Japan	
		44th	45th	46th	47th	Cum 2017	47th	Cum 2017
I	Ebola hemorrhagic fever							
	Crimean-Congo hemorrhagic fever							
	Smallpox							
	South American hemorrhagic fever							
	Plague							
	Marburg disease							
	Lassa fever							
II	Acute poliomyelitis							
	Tuberculosis	73	68	74	72	3,126	307	20,471
	Diphtheria							
	Severe Acute Respiratory Syndrome(SARS)							
	Middle East Respiratory Syndrome (MERS)							
	Avian influenza H5N1							
	Avian influenza H7N9							
III	Cholera					2		7
	Shigellosis	1				31	4	132
	Enterohemorrhagic Escherichia coli infection	2	6	4	1	456	28	3,780
	Typhoid fever					8	1	37
	Paratyphoid fever					6		13
IV	Hepatitis E		3			52	5	286
	West Nile fever							
	Hepatitis A	1				60	2	250
	Echinococcosis					1		24
	Yellow fever							
	Psittacosis							11
	Omsk hemorrhagic fever							
	Relapsing fever					2		8
	Kyasanur forest disease							
	Q fever							
	Rabies							
	Coccidioidomycosis					1		1
	Monkeypox							
	Zika virus infection							4
	Severe Fever with Thrombocytopenia Syndrome							89
	Hemorrhagic fever with renal syndrome							
	Western equine encephalitis							
	Tick-borne encephalitis							2
	Anthrax							
	Chikungunya fever					2		4
	Scrub typhus(Tsutsugamushi disease)	1	1			5	35	227
	Dengue fever		4			65	4	234
	Eastern equine encephalitis							
	Avian influenza (excluding H5N1 and H7N9)							
	Nipah virus infection							
	Japanese spotted fever					1	2	325
	Japanese encephalitis						1	3
	Hantavirus pulmonary syndrome							
	Herpes B virus infection							
	Glanders							
	Brucellosis							2
	Venezuelan equine encephalitis							
Hendra virus infection								
Epidemic typhus								
Botulism					1		3	
Malaria	2			1	26	2	57	
Tularemia								
Lyme disease					1		19	
Lyssavirus infection(excluding rabies)								
Rift valley fever								
Melioidosis					1		1	
Legionellosis	3	6	4	2	146	17	1,614	
Leptospirosis	1				9	1	44	
Rocky mountain spotted fever								

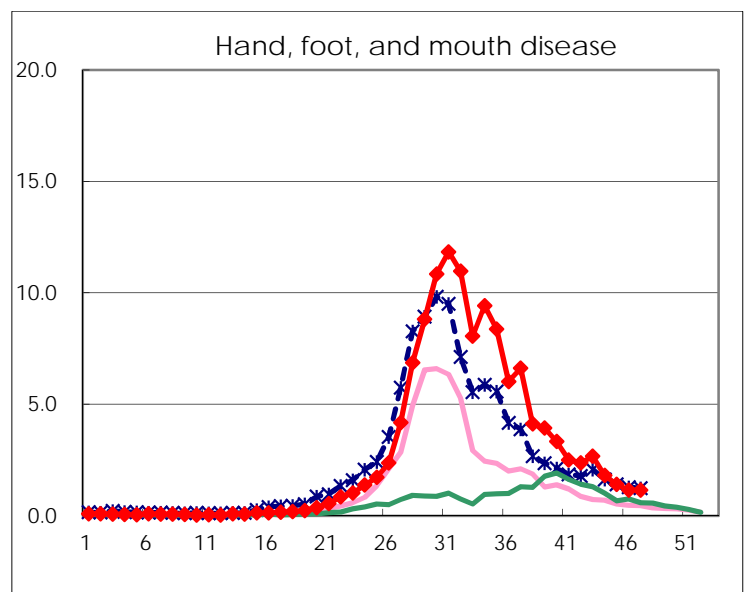
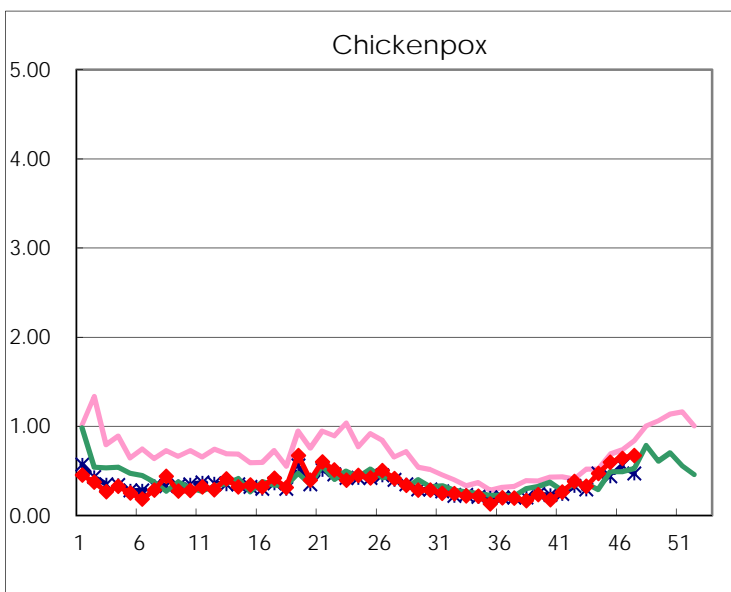
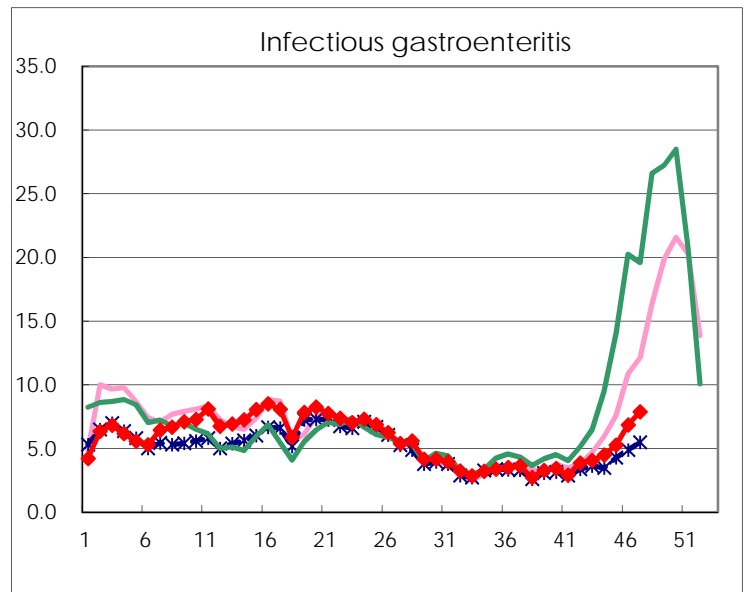
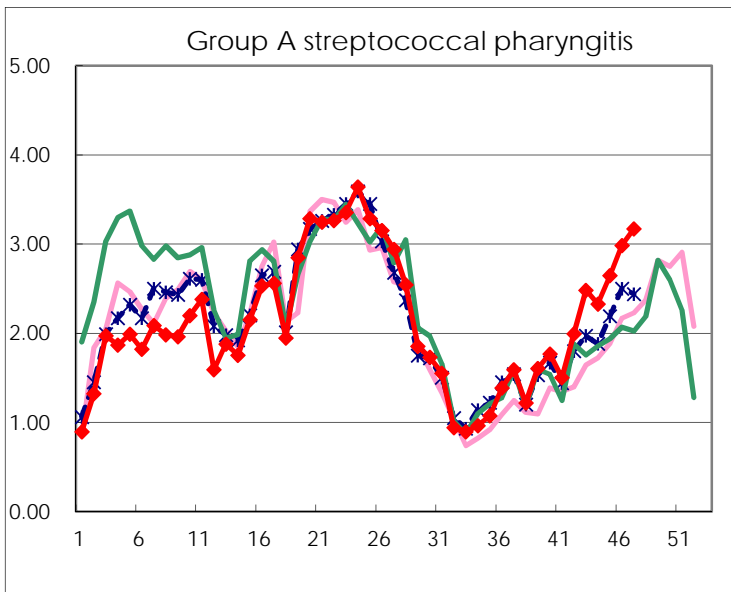
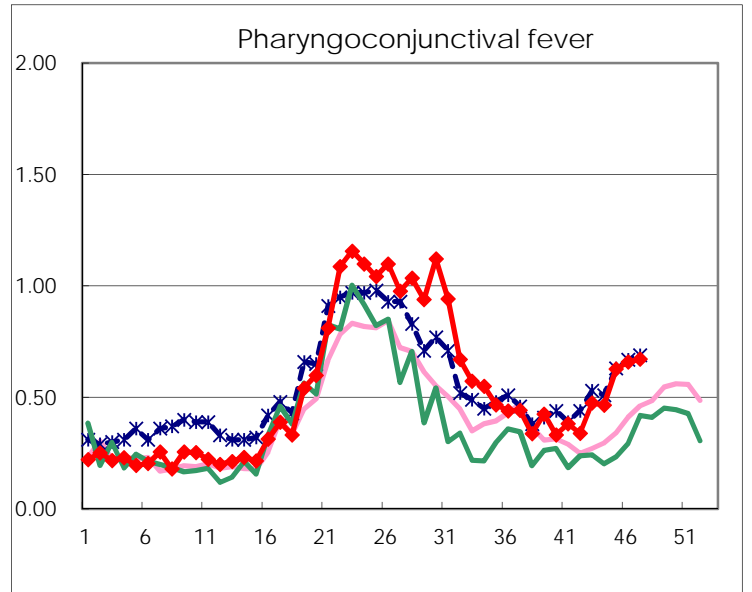
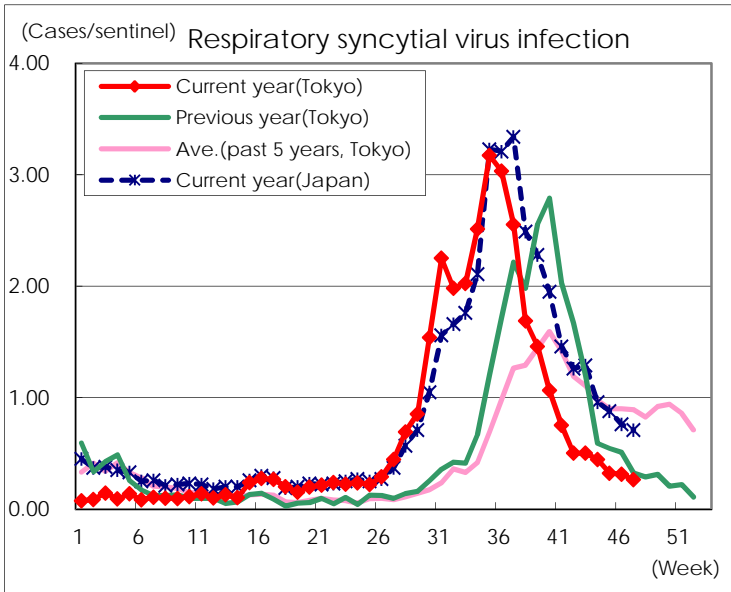
Category	Diseases	Tokyo					Japan	
		44th	45th	46th	47th	Cum 2017	47th	Cum 2017
V	Amebiasis	5	8	6	2	198	9	963
	Viral hepatitis(excluding hepatitis A and E)		3	1	2	58	3	264
	CRE infection	2	6	2	3	198	13	1,494
	Acute encephalitis(excluding JE and WNE)	1	1	1		62	5	605
	Cryptosporidiosis					2		12
	Creutzfeldt-Jakob disease	1				15	1	177
	Severe invasive streptococcal infections(TSLS)	2	1	1		64	5	493
	Acquired immunodeficiency syndrome (AIDS)	5	13	6	8	424	14	1,242
	Giardiasis					22	2	52
	Invasive <i>Haemophilus influenzae</i> disease	1		2	1	48	3	326
	Invasive meningococcal disease					3		23
	Invasive pneumococcal disease	5	10	5	7	356	46	2,791
	Varicella (limited to hospitalized case)	2	2	2	2	52	6	277
	Congenital rubella syndrome							
	Syphilis	26	45	32	28	1,611	52	5,158
	Disseminated cryptococcosis					13		118
	Tetanus	1			1	7	1	116
	Vancomycin-resistant <i>S. aureus</i> infection							
	Vancomycin-resistant Enterococcus infection					7		70
	Rubella					21	1	83
Measles					28	1	189	
MDRA infection	1				5		23	

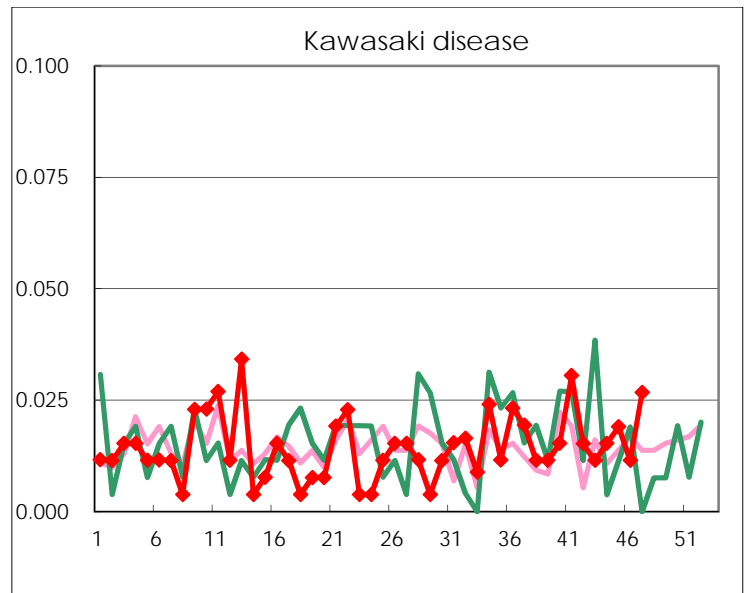
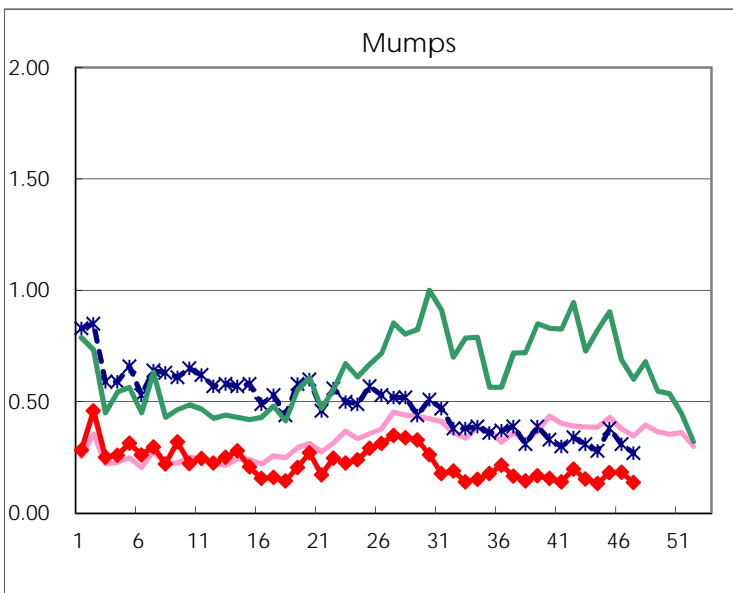
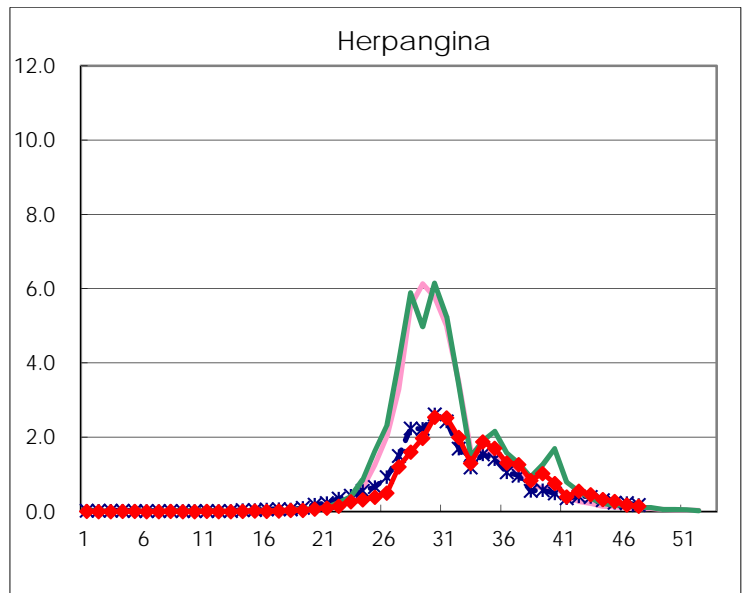
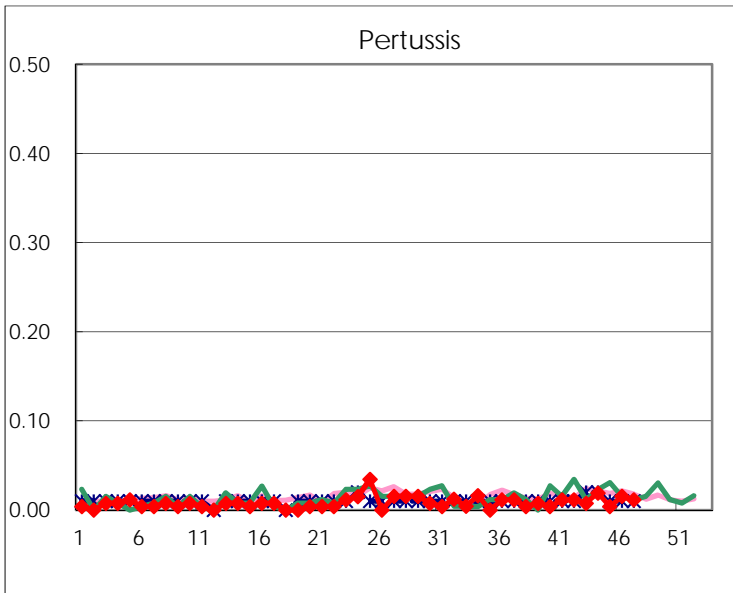
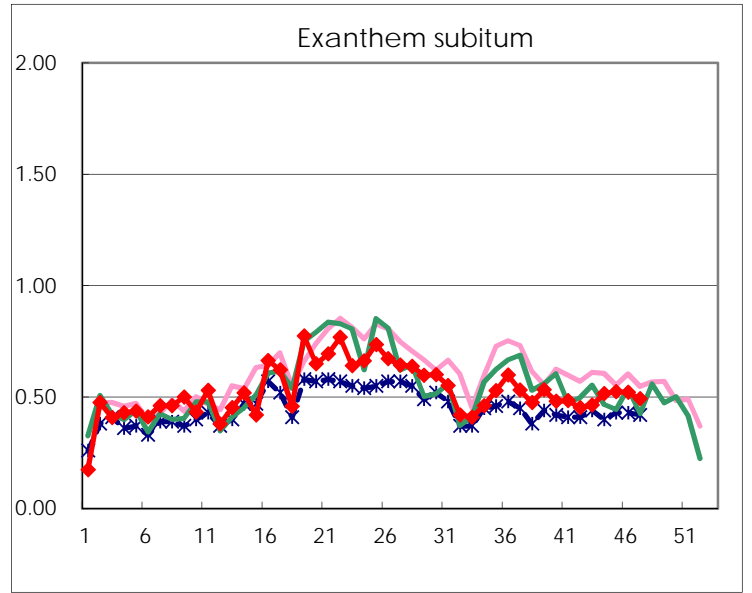
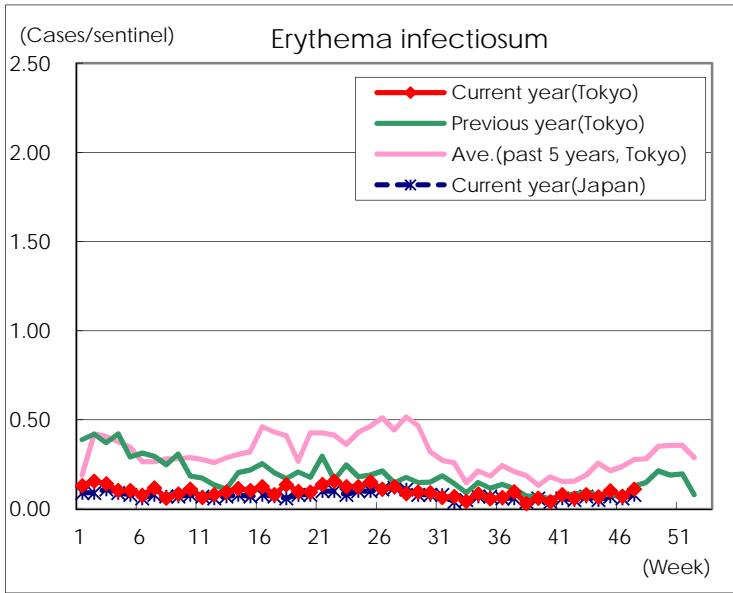
Number of patients with the diseases to be reported
by the designated clinics and hospitals

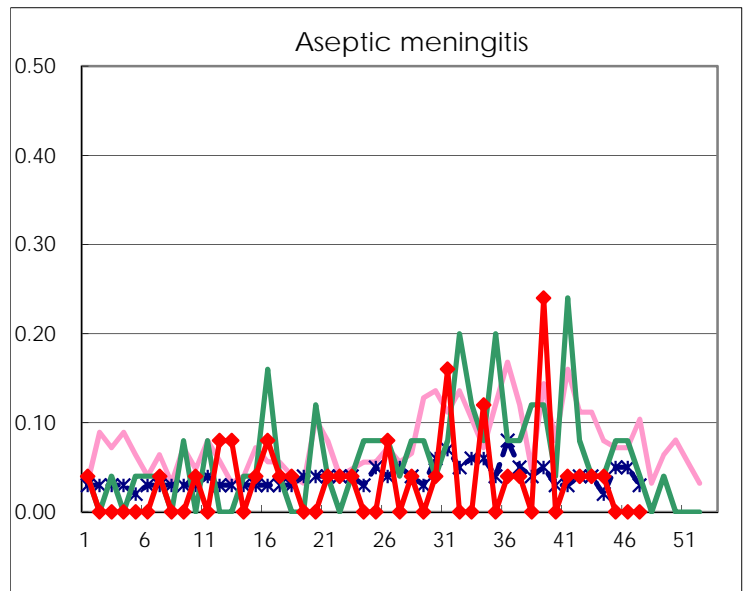
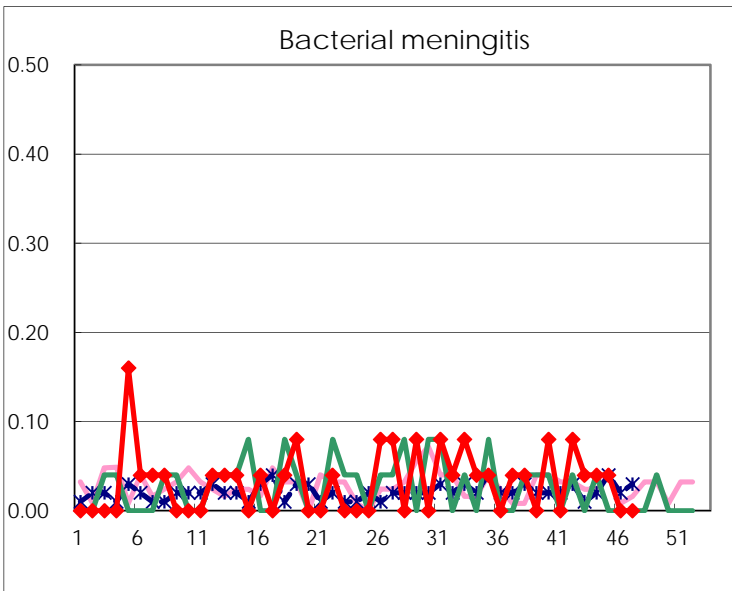
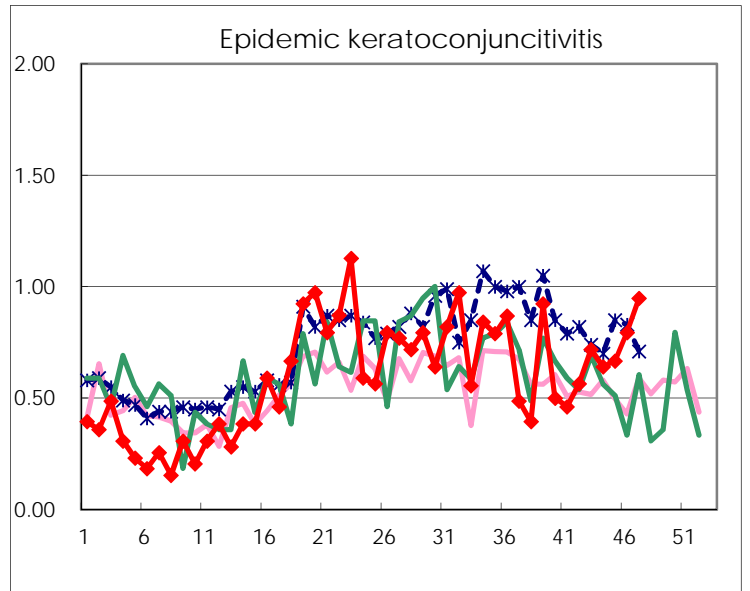
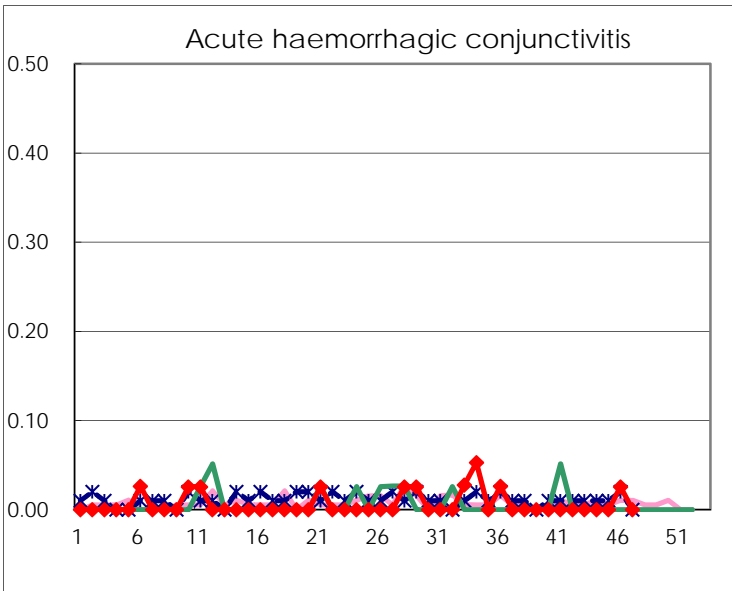
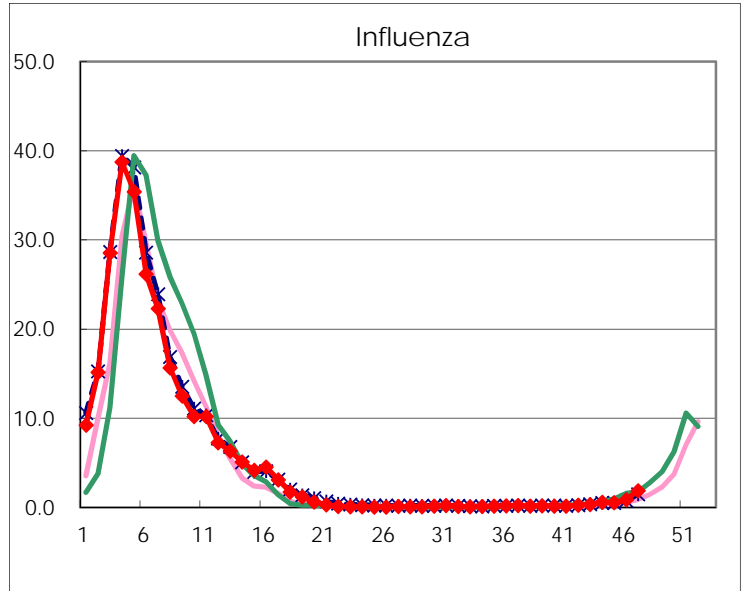
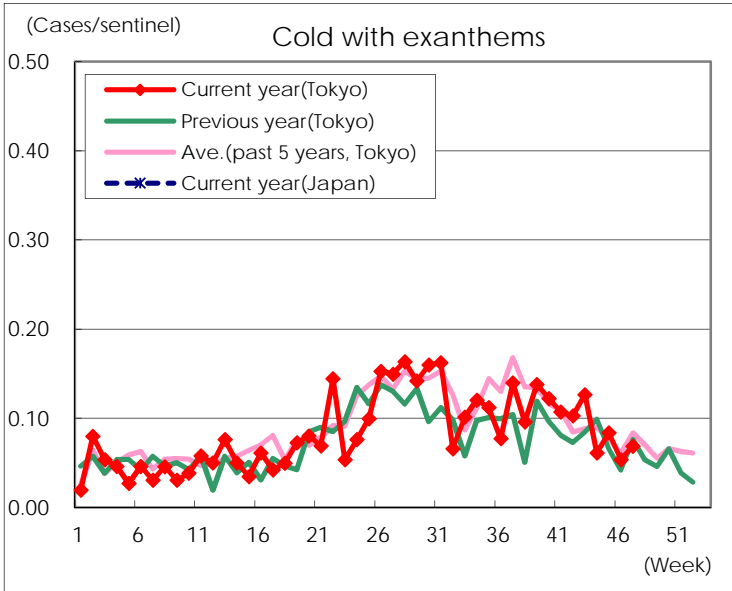
Diseases	Tokyo				
	44th	45th	46th	47th	/sentinel
Respiratory syncytial virus infection	117	85	82	69	0.26
Pharyngoconjunctival fever	122	165	172	176	0.67
Group A streptococcal pharyngitis	610	696	779	831	3.17
Infectious gastroenteritis	1,174	1,384	1,787	2,063	7.87
Chickenpox	123	157	167	176	0.67
Hand, foot, and mouth disease	474	369	301	301	1.15
Erythema infectiosum	18	27	19	29	0.11
Exanthem subitum	135	138	136	129	0.49
Pertussis	5	1	4	3	0.01
Herpangina	86	72	47	38	0.15
Mumps	35	48	48	36	0.14
Kawasaki disease	4	5	3	7	0.03
Cold with exanthems	16	22	14	18	0.07
Influenza	234	226	360	775	1.86
Acute hemorrhagic conjunctivitis			1		
Epidemic keratoconjunctivitis	25	26	31	36	0.95
Bacterial meningitis	1	1			
Aseptic meningitis	1				
Mycoplasma pneumonia	8	11	4	3	0.12
Chlamydial pneumonia (excluding psittacosis)	1	1	2	1	0.04
Infectious gastroenteritis (only by Rotavirus)				2	0.08
Influenza-Associated Hospitalizations	2	1	1	15	0.60

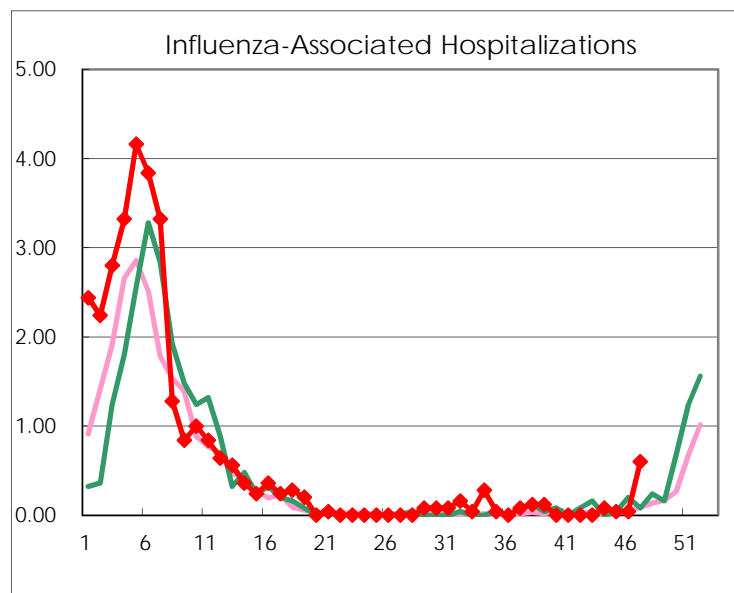
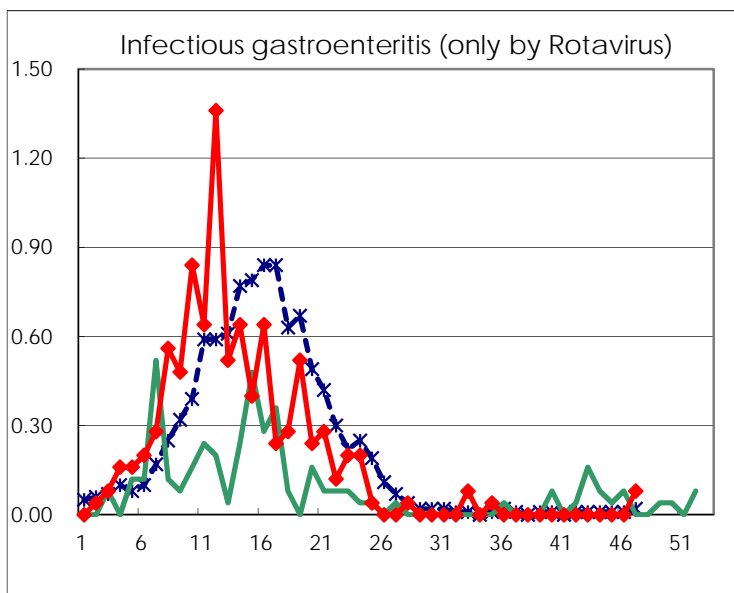
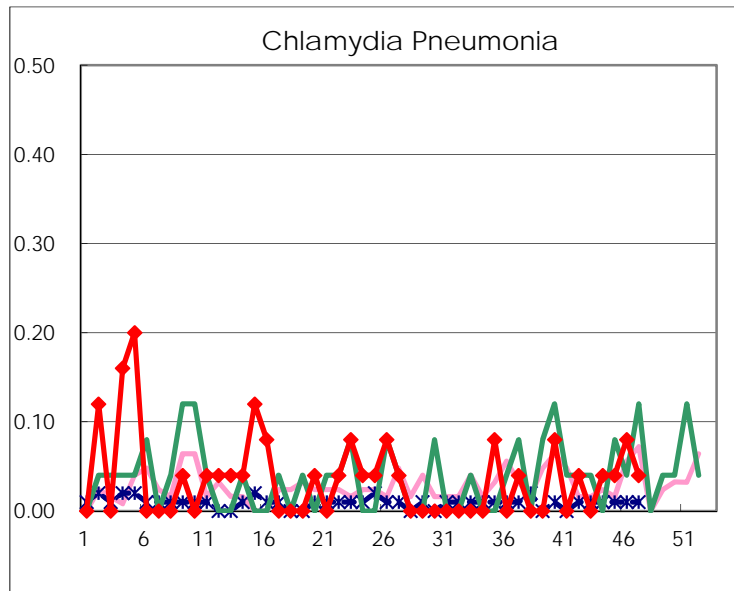
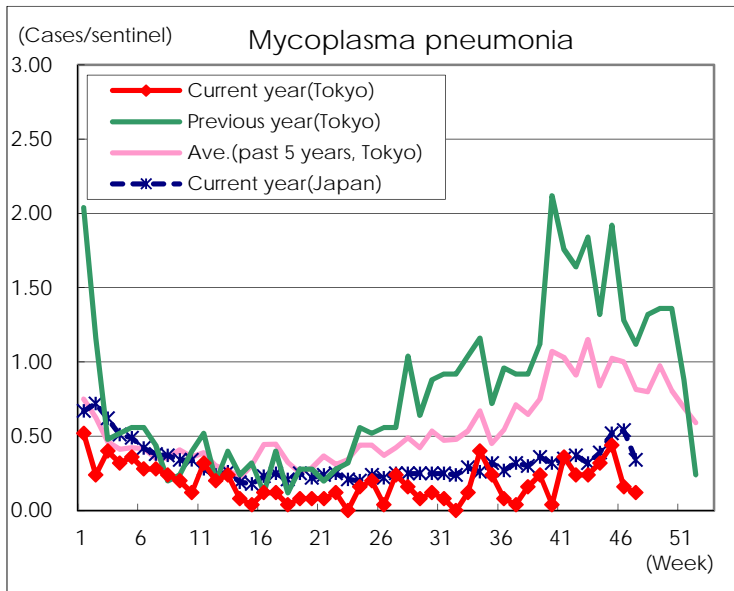
(Blank means 0.)

Disease Trend Graph (weekly reported cases per sentinel in comparison)









Number of sentinel facilities for weekly reporting		
Types of sentinels	Number of sentinels	Sentinels having reported
Pediatric	264	262
Influenza	419	417
Ophthalmic	39	38
Specially-designated	25	25