

7 December 2017 / Number 48

Surveillance System in Tokyo, Japan

The infectious diseases which all physicians must report

All physicians must report to health centers the incidence of the diseases which are shown at page one. Health centers electronically report the individual cases to Tokyo Metropolitan Infectious Disease Surveillance Center.

The infectious diseases required to be reported by the sentinels

The numbers of patients who visit the sentinel clinics or hospitals during a week are reported to health centers in Tokyo. And they electronically report the numbers to Tokyo Metropolitan Infectious Disease Surveillance Center. We have about 500 sentinel clinics and hospitals in Tokyo.

Tokyo Metropolitan Institute of Public Health

TEL:81-3-3363-3213 FAX:81-3-5332-7365

e-mail:www@tokyo-eiken.go.jp

URL:idsc.tokyo-eiken.go.jp/

Number of patients with the diseases which all physicians must report

Category	Diseases	Tokyo				Cum 2017	Japan		
		45th	46th	47th	48th		48th	Cum 2017	
I	Ebola hemorrhagic fever								
	Crimean-Congo hemorrhagic fever								
	Smallpox								
	South American hemorrhagic fever								
	Plague								
	Marburg disease								
	Lassa fever								
II	Acute poliomyelitis								
	Tuberculosis	69	77	73	63	3,193	346	20,895	
	Diphtheria								
	Severe Acute Respiratory Syndrome(SARS)								
	Middle East Respiratory Syndrome (MERS)								
	Avian influenza H5N1								
	Avian influenza H7N9								
III	Cholera					2		7	
	Shigellosis				2	33	3	135	
	Enterohemorrhagic Escherichia coli infection	6	4	1	8	464	28	3,818	
	Typhoid fever					8		37	
	Paratyphoid fever					6	1	13	
IV	Hepatitis E	3			2	54	1	288	
	West Nile fever								
	Hepatitis A				1	61	5	256	
	Echinococcosis					1	1	25	
	Yellow fever								
	Psittacosis							11	
	Omsk hemorrhagic fever								
	Relapsing fever					2		8	
	Kyasanur forest disease								
	Q fever								
	Rabies								
	Coccidioidomycosis					1		1	
	Monkeypox								
	Zika virus infection							4	
	Severe Fever with Thrombocytopenia Syndrome							1	90
	Hemorrhagic fever with renal syndrome								
	Western equine encephalitis								
	Tick-borne encephalitis								2
	Anthrax								
	Chikungunya fever						2		4
	Scrub typhus(Tsutsugamushi disease)	1			2	7	53		294
	Dengue fever	4				65	1		236
	Eastern equine encephalitis								
	Avian influenza (excluding H5N1 and H7N9)								
	Nipah virus infection								
	Japanese spotted fever						1	2	327
	Japanese encephalitis								3
	Hantavirus pulmonary syndrome								
	Herpes B virus infection								
	Glanders								
	Brucellosis								2
	Venezuelan equine encephalitis								
Hendra virus infection									
Epidemic typhus									
Botulism						1		3	
Malaria			1			26	1	58	
Tularemia									
Lyme disease						1		19	
Lyssavirus infection(excluding rabies)									
Rift valley fever									
Melioidosis						1		1	
Legionellosis	6	4	2	1	147	23		1,639	
Leptospirosis						9		44	
	Rocky mountain spotted fever								

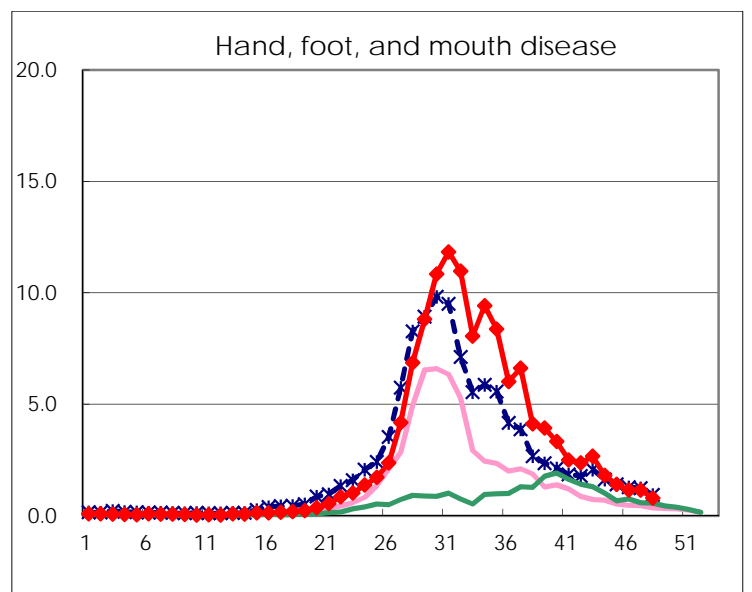
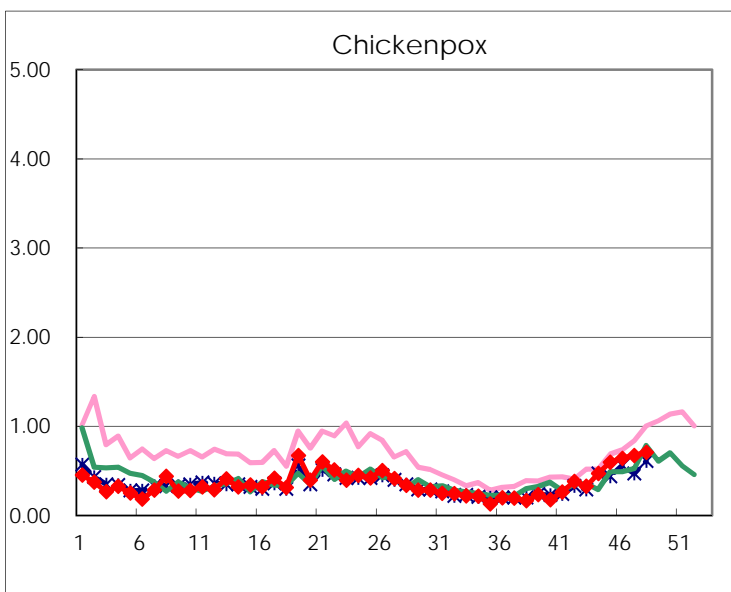
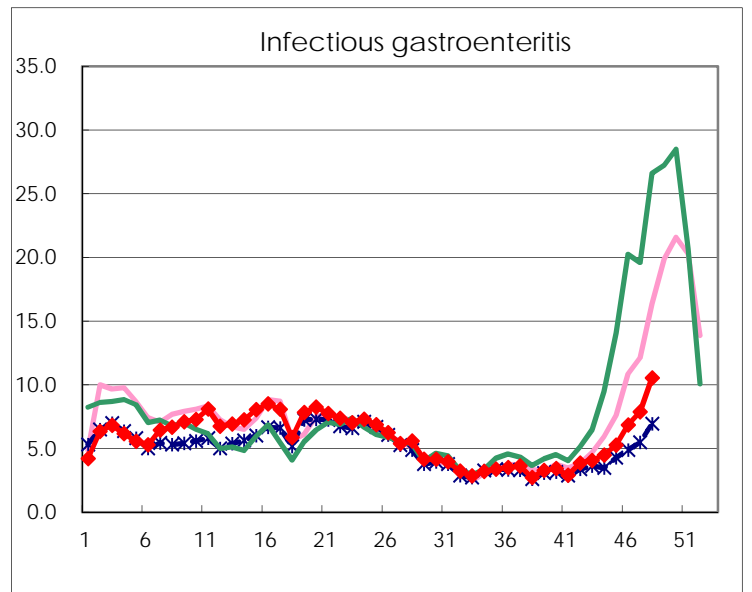
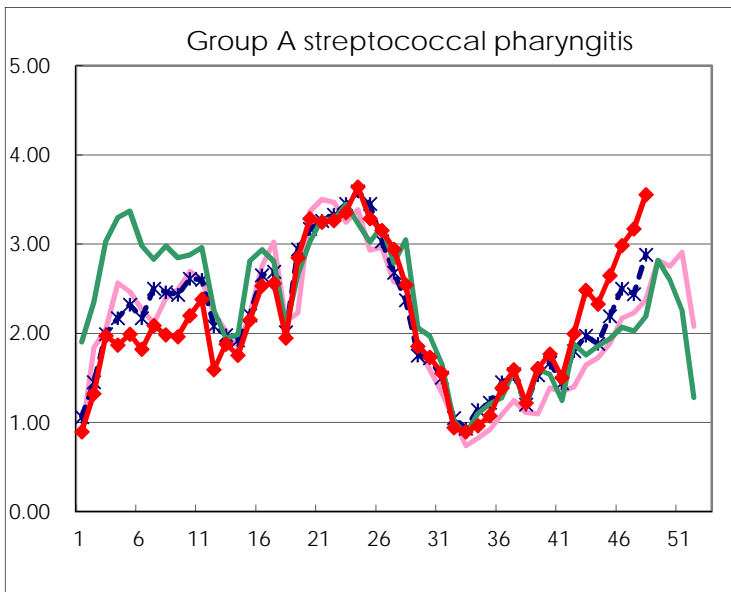
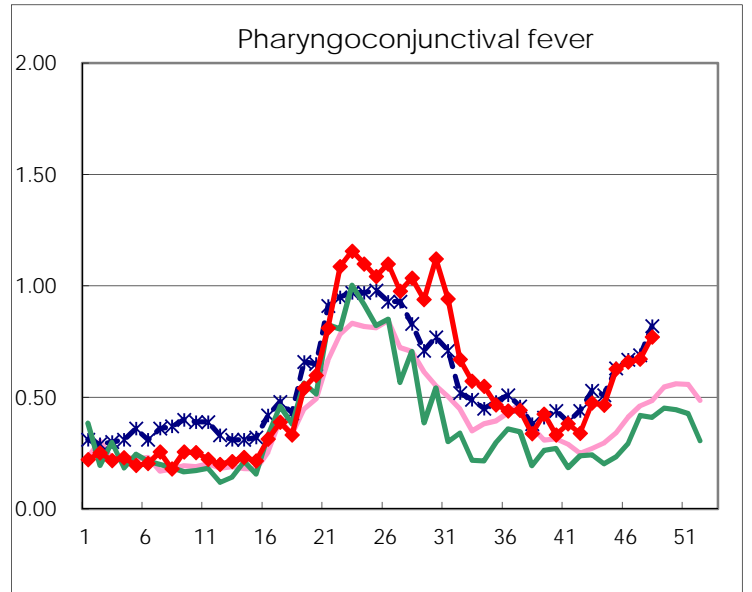
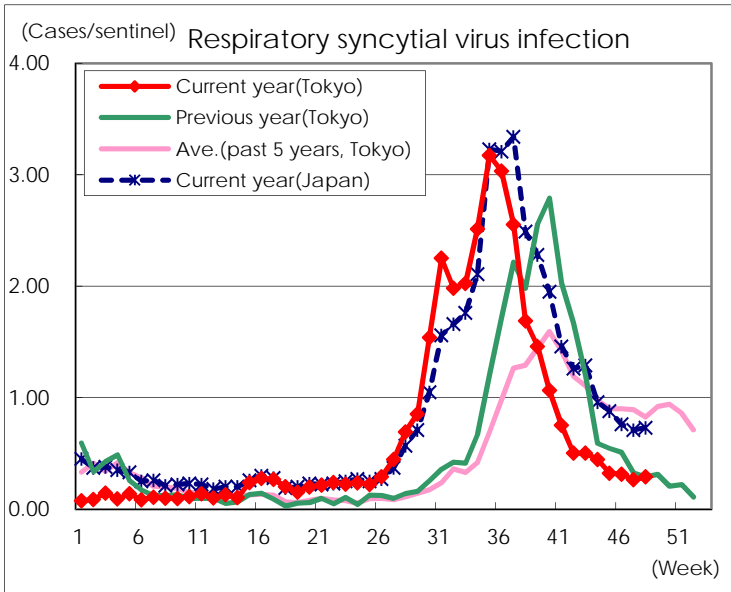
Category	Diseases	Tokyo					Japan	
		45th	46th	47th	48th	Cum 2017	48th	Cum 2017
V	Amebiasis	8	6	3	3	202	10	978
	Viral hepatitis(excluding hepatitis A and E)	3	1	2	2	60	1	267
	CRE infection	6	2	3	1	199	21	1,522
	Acute encephalitis(excluding JE and WNE)	1	1			63	6	621
	Cryptosporidiosis					2		12
	Creutzfeldt-Jakob disease				1	16		178
	Severe invasive streptococcal infections(TSLS)	1	1		2	66	10	510
	Acquired immunodeficiency syndrome (AIDS)	13	6	9	8	433	8	1,263
	Giardiasis				1	23	2	54
	Invasive <i>Haemophilus influenzae</i> disease		2	1	1	49	6	335
	Invasive meningococcal disease					3		23
	Invasive pneumococcal disease	10	6	7	5	362	59	2,869
	Varicella (limited to hospitalized case)	2	2	2	1	53	6	286
	Congenital rubella syndrome							
	Syphilis	45	33	29	31	1,644	79	5,279
	Disseminated cryptococcosis				1	14		122
	Tetanus			1		7	3	119
	Vancomycin-resistant <i>S. aureus</i> infection							
	Vancomycin-resistant Enterococcus infection					7	2	73
	Rubella				1	22	2	85
Measles					28		188	
MDRA infection					5		23	

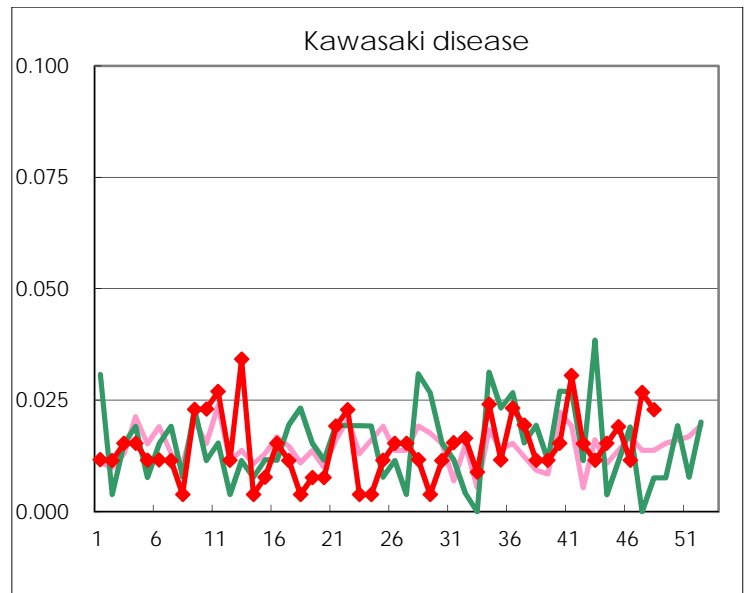
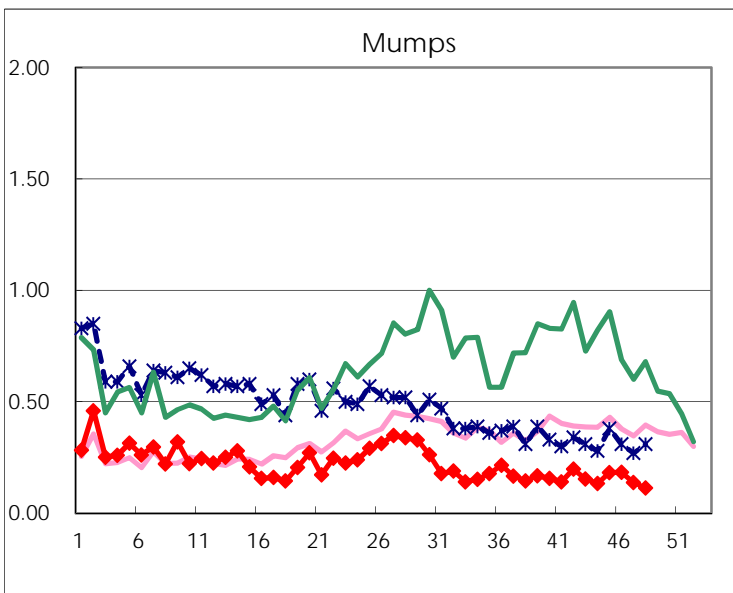
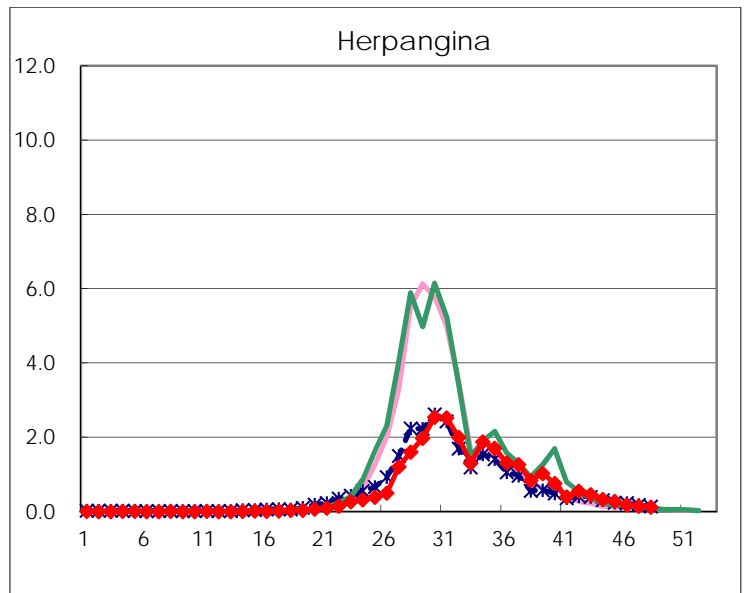
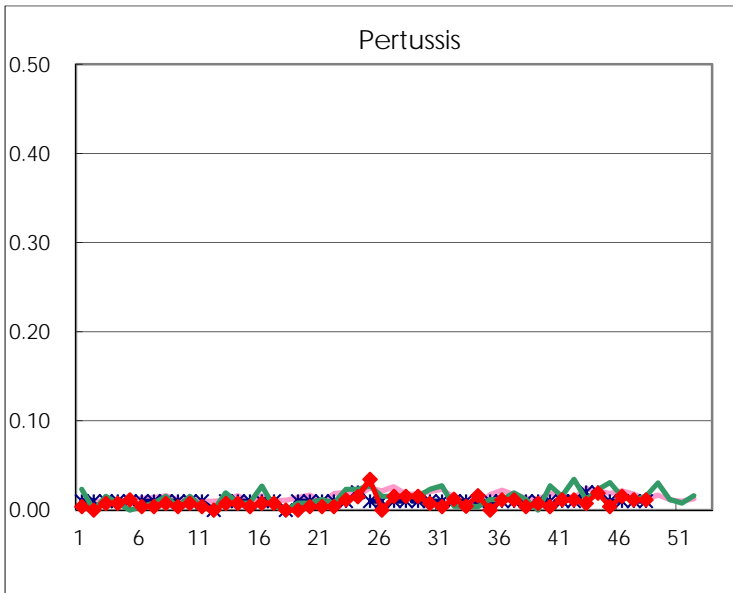
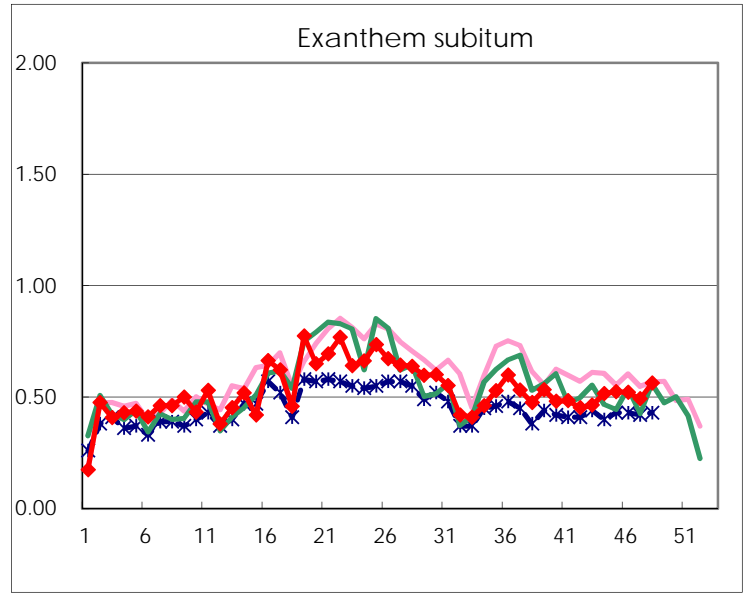
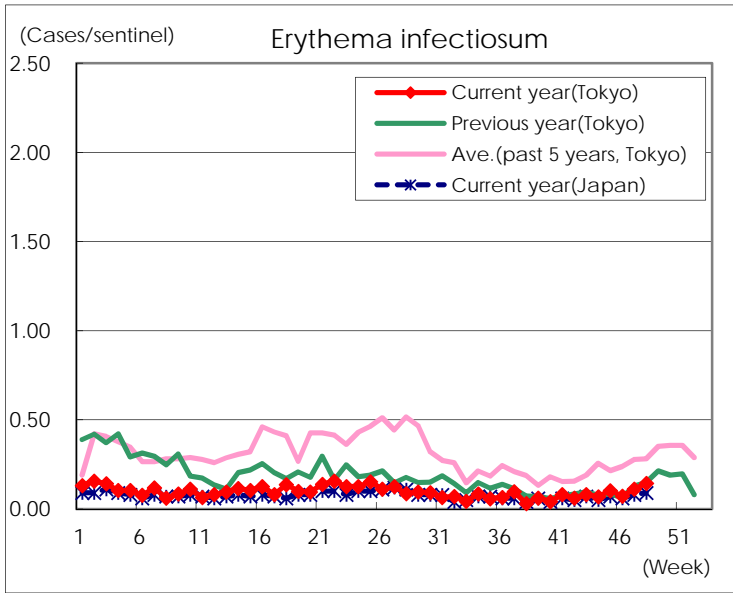
Number of patients with the diseases to be reported
by the designated clinics and hospitals

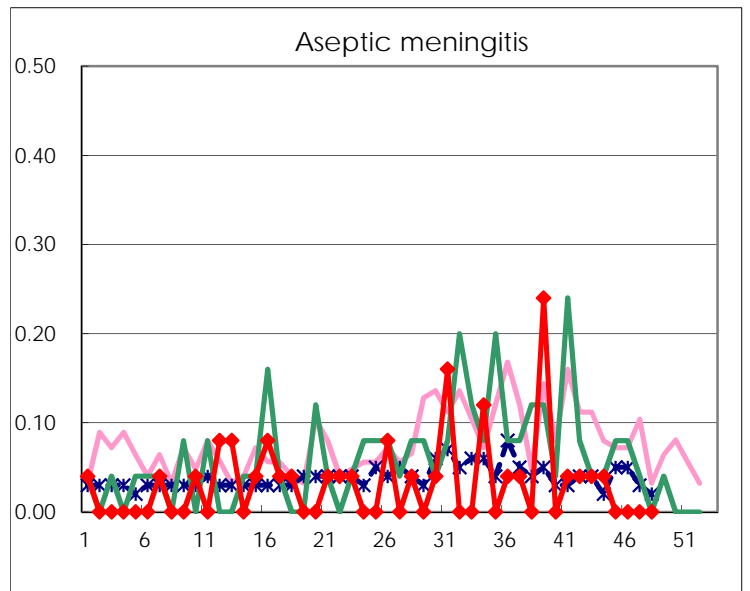
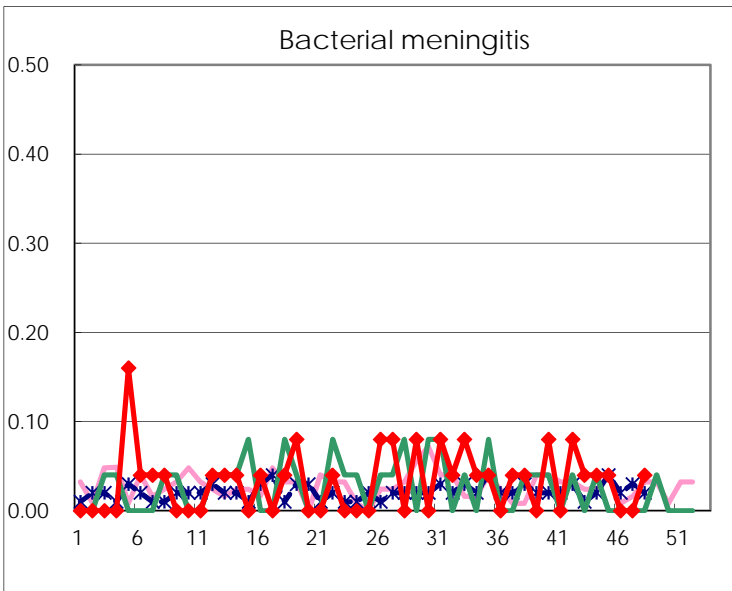
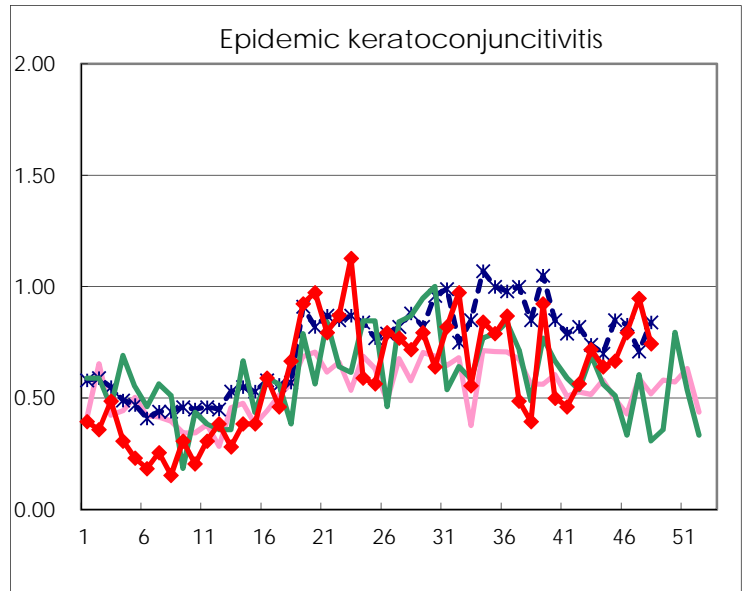
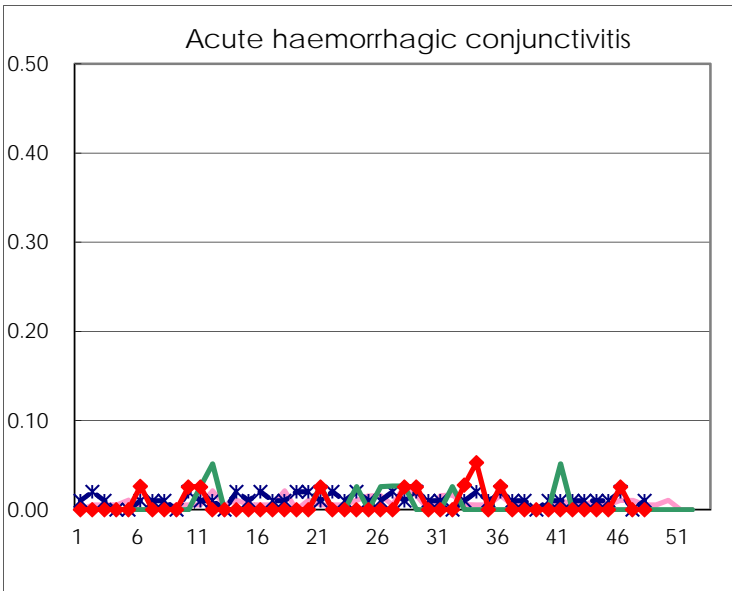
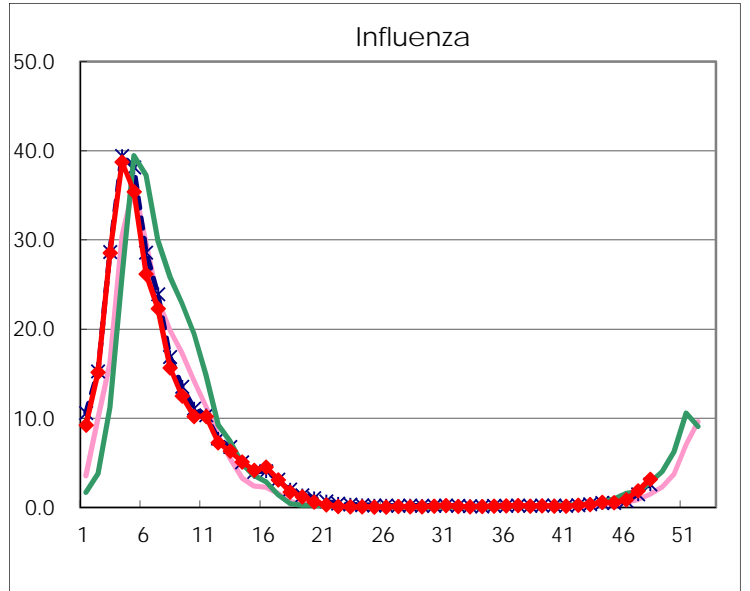
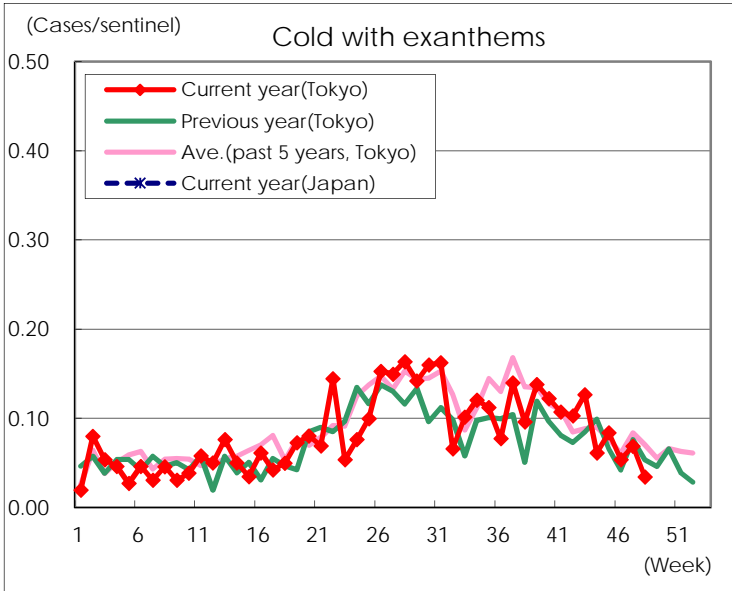
Diseases	Tokyo				
	45th	46th	47th	48th	/sentinel
Respiratory syncytial virus infection	85	82	69	76	0.29
Pharyngoconjunctival fever	165	172	176	203	0.77
Group A streptococcal pharyngitis	696	779	831	935	3.56
Infectious gastroenteritis	1,384	1,787	2,063	2,771	10.54
Chickenpox	157	167	176	186	0.71
Hand, foot, and mouth disease	369	301	301	209	0.79
Erythema infectiosum	27	19	29	38	0.14
Exanthem subitum	138	136	129	148	0.56
Pertussis	1	4	3	3	0.01
Herpangina	72	47	38	31	0.12
Mumps	48	48	36	30	0.11
Kawasaki disease	5	3	7	6	0.02
Cold with exanthems	22	14	18	9	0.03
Influenza	226	360	775	1,322	3.17
Acute hemorrhagic conjunctivitis		1			
Epidemic keratoconjunctivitis	26	31	36	29	0.74
Bacterial meningitis	1			1	0.04
Aseptic meningitis					
Mycoplasma pneumonia	11	4	3	4	0.16
Chlamydial pneumonia (excluding psittacosis)	1	2	1	1	0.04
Infectious gastroenteritis (only by Rotavirus)			2		
Influenza-Associated Hospitalizations	1	1	15	6	0.24

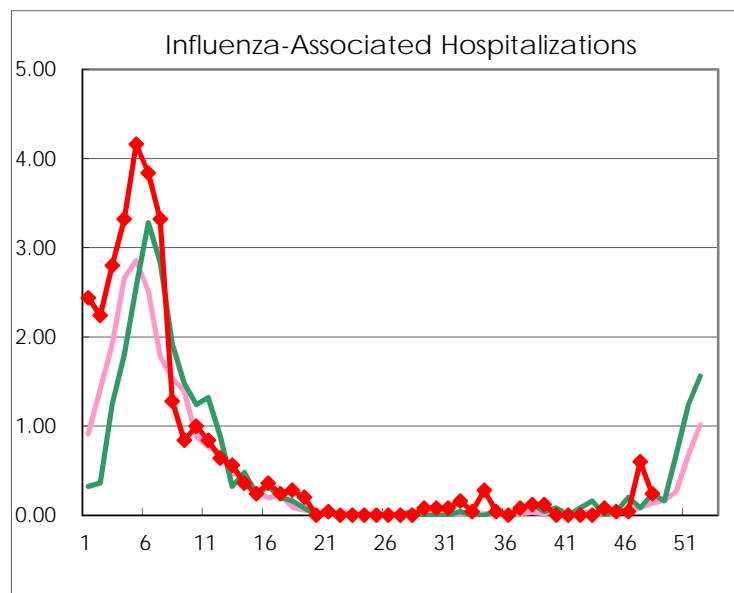
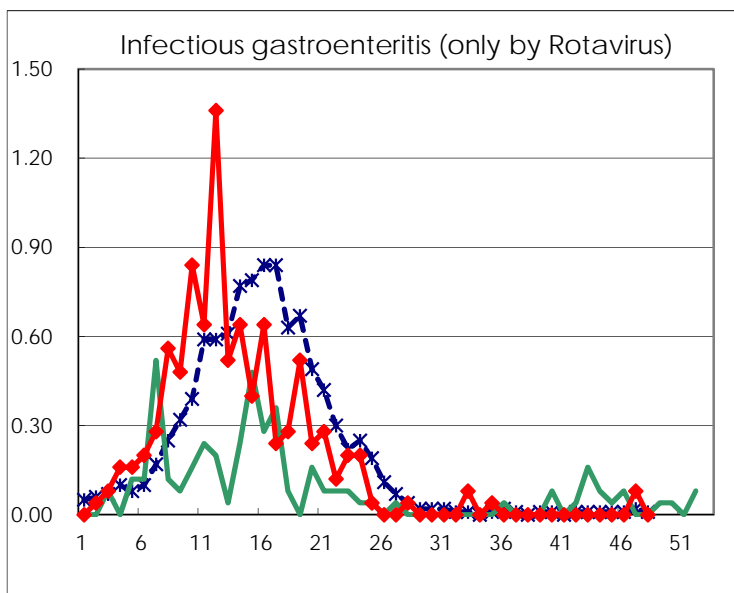
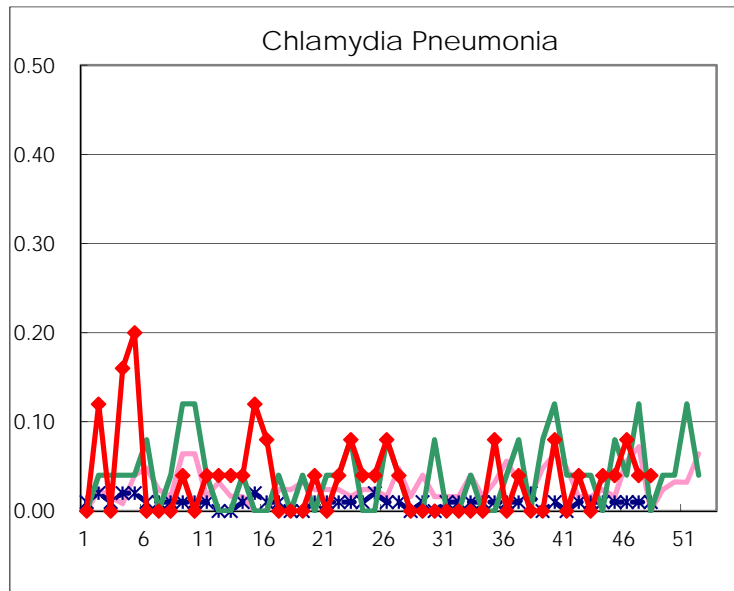
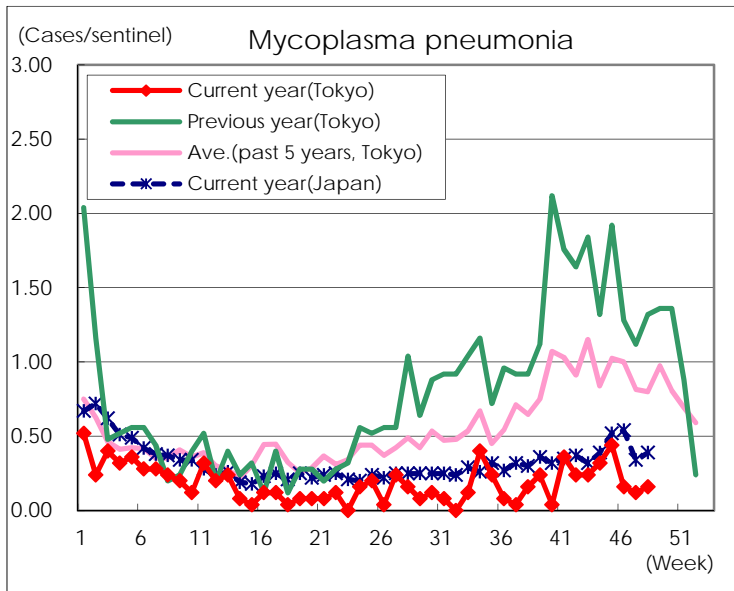
(Blank means 0.)

Disease Trend Graph (weekly reported cases per sentinel in comparison)









Number of sentinel facilities for weekly reporting		
Types of sentinels	Number of sentinels	Sentinels having reported
Pediatric	264	263
Influenza	419	417
Ophthalmic	39	39
Specially-designated	25	25