

**14 December 2017 / Number 49**

## Surveillance System in Tokyo, Japan

The infectious diseases which all physicians must report

All physicians must report to health centers the incidence of the diseases which are shown at page one. Health centers electronically report the individual cases to Tokyo Metropolitan Infectious Disease Surveillance Center.

The infectious diseases required to be reported by the sentinels

The numbers of patients who visit the sentinel clinics or hospitals during a week are reported to health centers in Tokyo. And they electronically report the numbers to Tokyo Metropolitan Infectious Disease Surveillance Center. We have about 500 sentinel clinics and hospitals in Tokyo.

Tokyo Metropolitan Institute of Public Health

TEL:81-3-3363-3213 FAX:81-3-5332-7365

e-mail:[www@tokyo-eiken.go.jp](mailto:www@tokyo-eiken.go.jp)

URL:[idsc.tokyo-eiken.go.jp/](http://idsc.tokyo-eiken.go.jp/)

---

Number of patients with the diseases which all physicians must report

Category	Diseases	Tokyo					Japan	
		46th	47th	48th	49th	Cum 2017	49th	Cum 2017
I	Ebola hemorrhagic fever							
	Crimean-Congo hemorrhagic fever							
	Smallpox							
	South American hemorrhagic fever							
	Plague							
	Marburg disease							
	Lassa fever							
II	Acute poliomyelitis							
	Tuberculosis	77	75	64	41	3,238	345	21,353
	Diphtheria							
	Severe Acute Respiratory Syndrome(SARS)							
	Middle East Respiratory Syndrome (MERS)							
	Avian influenza H5N1							
	Avian influenza H7N9							
III	Cholera					2		7
	Shigellosis			2		33	4	139
	Enterohemorrhagic Escherichia coli infection	4	1	8		464	17	3,837
	Typhoid fever					8		37
	Paratyphoid fever					6		14
IV	Hepatitis E			2		54	2	293
	West Nile fever							
	Hepatitis A			1		61	2	260
	Echinococcosis					1	1	26
	Yellow fever							
	Psittacosis							11
	Omsk hemorrhagic fever							
	Relapsing fever					2		8
	Kyasanur forest disease							
	Q fever							
	Rabies							
	Coccidioidomycosis					1		1
	Monkeypox							
	Zika virus infection						1	5
	Severe Fever with Thrombocytopenia Syndrome							90
	Hemorrhagic fever with renal syndrome							
	Western equine encephalitis							
	Tick-borne encephalitis							2
	Anthrax							
	Chikungunya fever					2		4
	Scrub typhus(Tsutsugamushi disease)			2		7	40	340
	Dengue fever					65	3	239
	Eastern equine encephalitis							
	Avian influenza (excluding H5N1 and H7N9)							
	Nipah virus infection							
	Japanese spotted fever					1	1	329
	Japanese encephalitis							3
	Hantavirus pulmonary syndrome							
	Herpes B virus infection							
	Glanders							
	Brucellosis							2
	Venezuelan equine encephalitis							
Hendra virus infection								
Epidemic typhus								
Botulism				1	2		4	
Malaria		1		1	27		59	
Tularemia								
Lyme disease					1		19	
Lyssavirus infection(excluding rabies)								
Rift valley fever								
Melioidosis					1		1	
Legionellosis	4	2	2	3	151	21	1,667	
Leptospirosis					9		46	
Rocky mountain spotted fever								

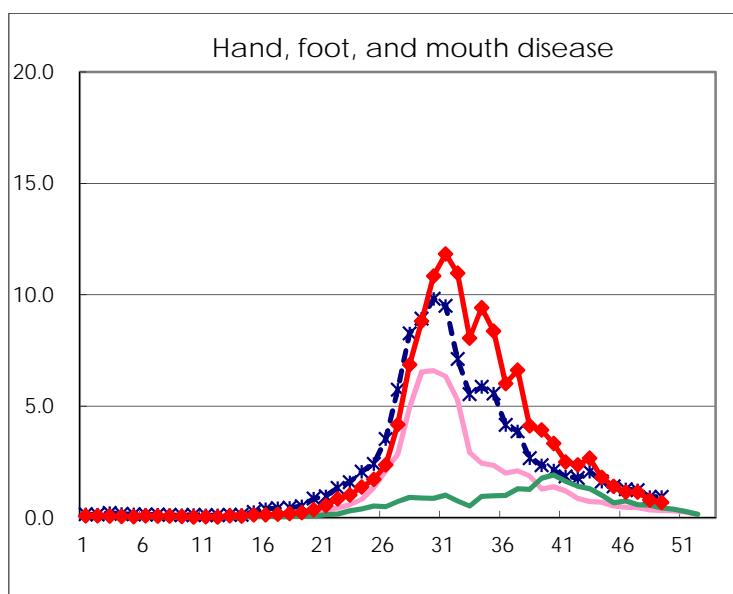
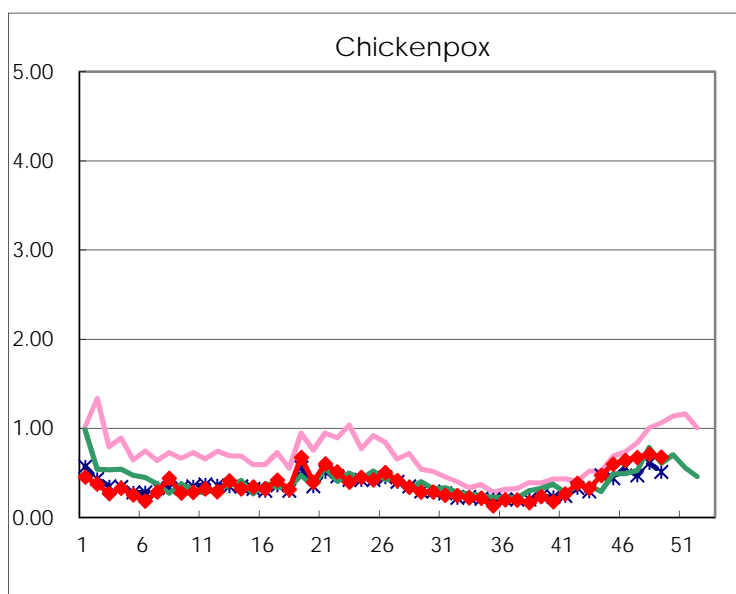
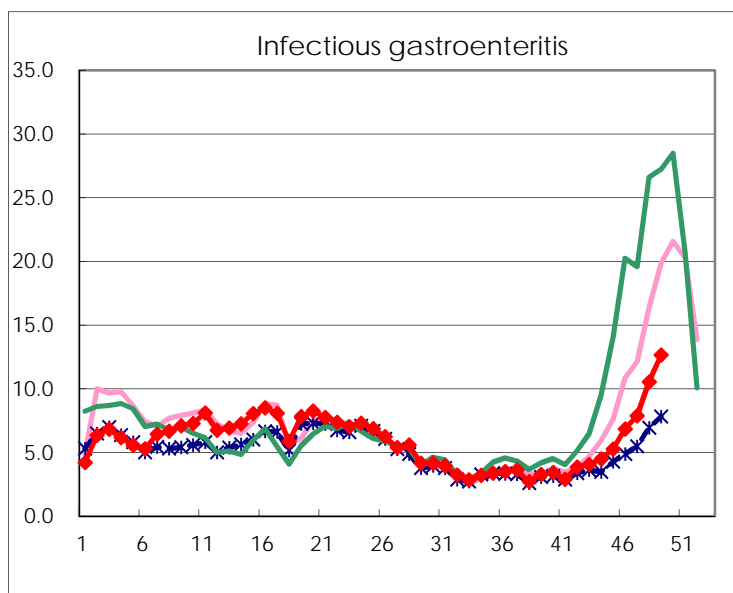
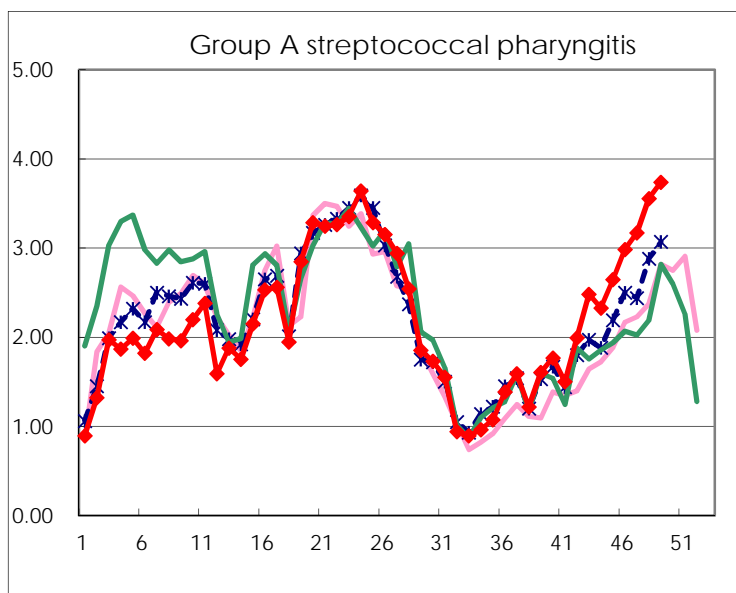
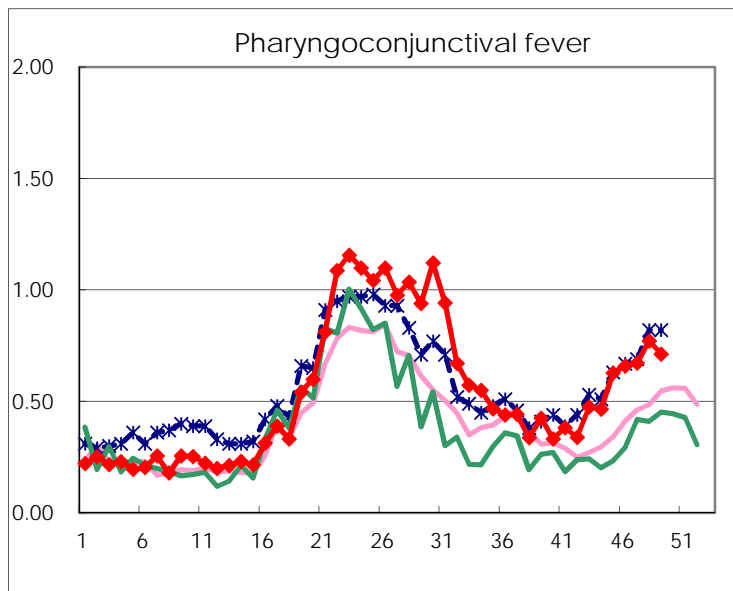
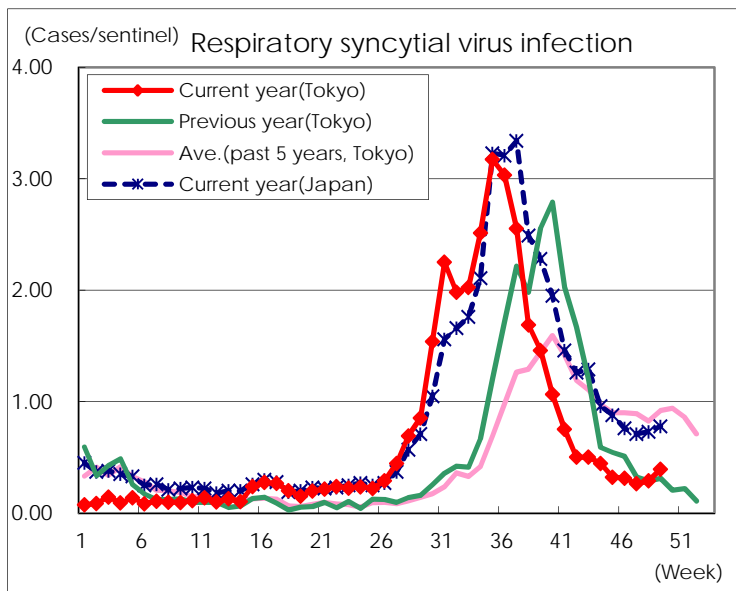
Category	Diseases	Tokyo					Japan	
		46th	47th	48th	49th	Cum 2017	49th	Cum 2017
V	Amebiasis	6	3	4	4	207	18	1,007
	Viral hepatitis(excluding hepatitis A and E)	1	2	2	3	63	4	271
	CRE infection	2	3	1	7	206	20	1,551
	Acute encephalitis(excluding JE and WNE)	1			2	65	9	632
	Cryptosporidiosis					2	7	19
	Creutzfeldt-Jakob disease			1	3	19	8	188
	Severe invasive streptococcal infections(TSLS)	1		2	1	67	12	525
	Acquired immunodeficiency syndrome (AIDS)	6	9	8	9	442	28	1,300
	Giardiasis			1		23	1	55
	Invasive <i>Haemophilus influenzae</i> disease	2	1	2	1	51	2	339
	Invasive meningococcal disease					3		23
	Invasive pneumococcal disease	6	7	5	11	373	49	2,940
	Varicella (limited to hospitalized case)	2	2	1		53		287
	Congenital rubella syndrome							
	Syphilis	33	29	32	40	1,685	77	5,409
	Disseminated cryptococcosis			1		14	1	123
	Tetanus		1		1	8	1	121
	Vancomycin-resistant <i>S. aureus</i> infection							
	Vancomycin-resistant Enterococcus infection					7		73
	Rubella			1		22		86
Measles					28		188	
MDRA infection				1	6	2	26	

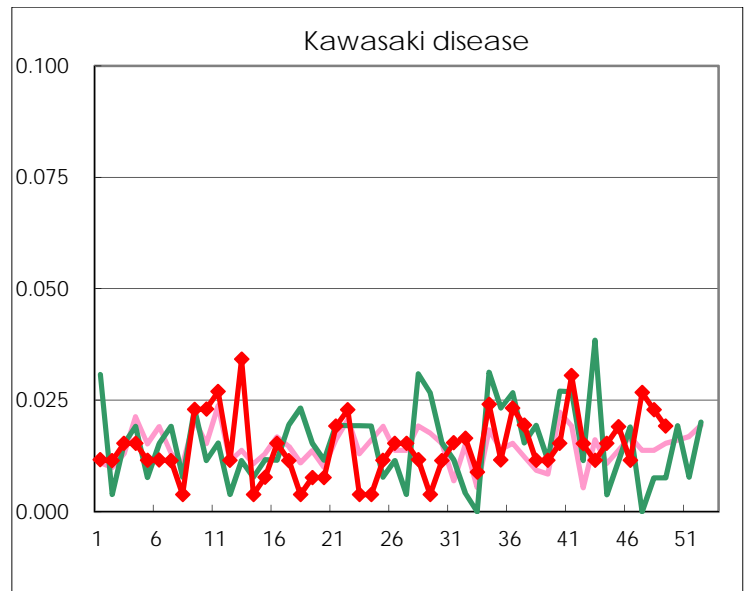
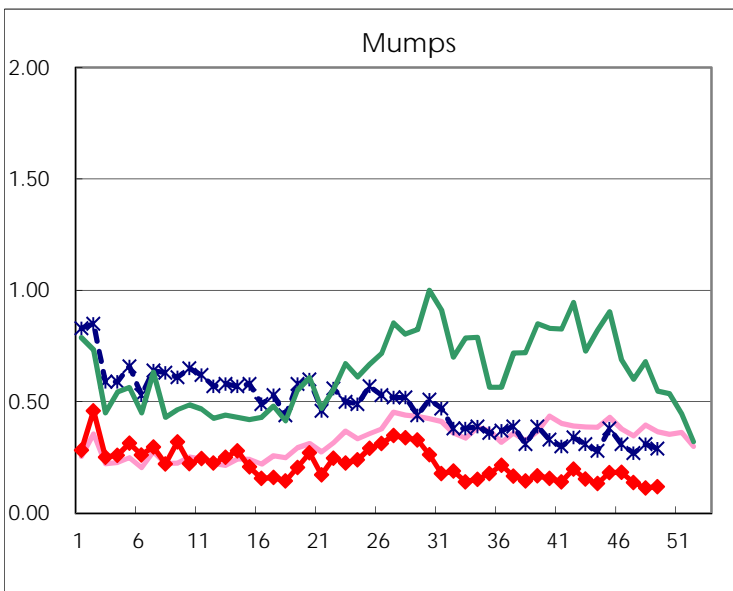
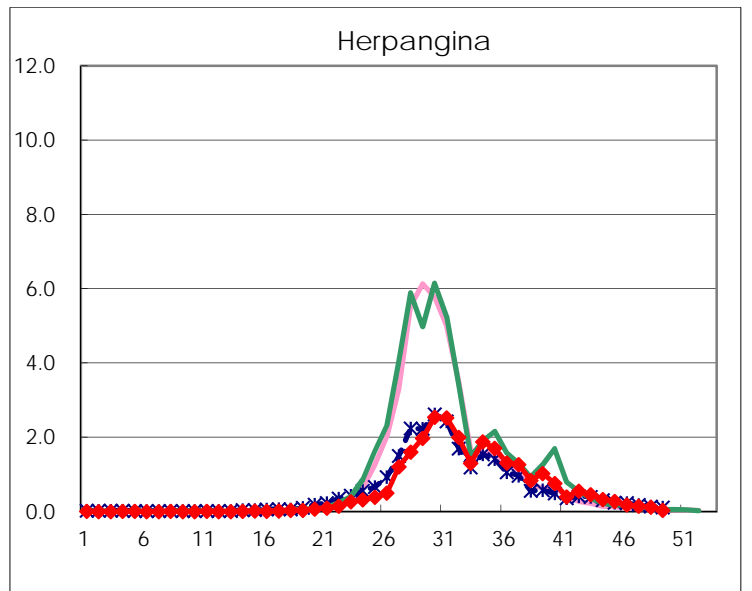
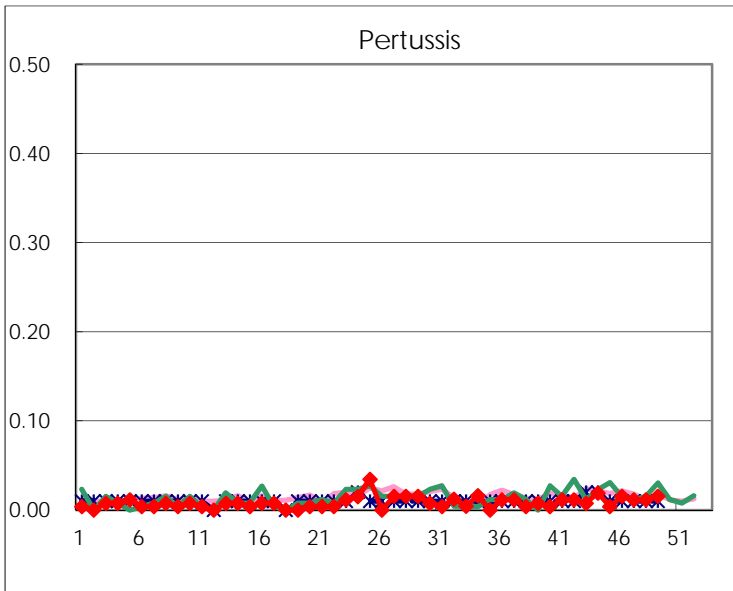
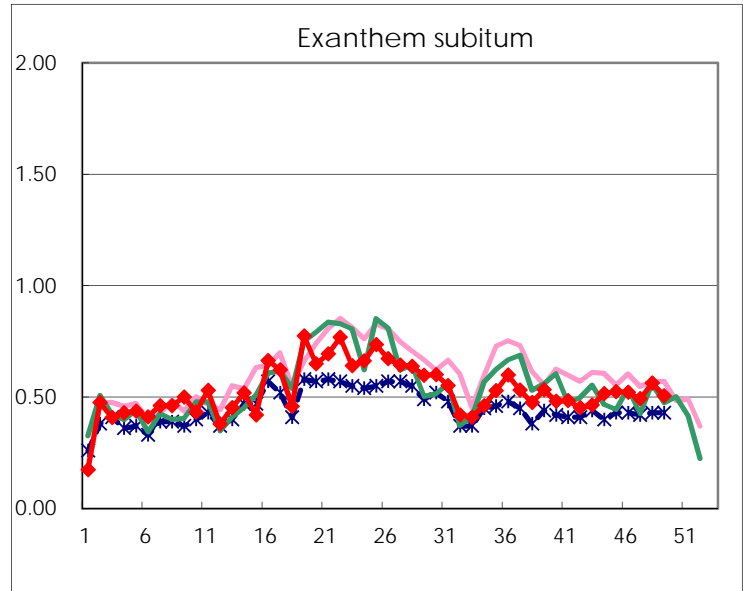
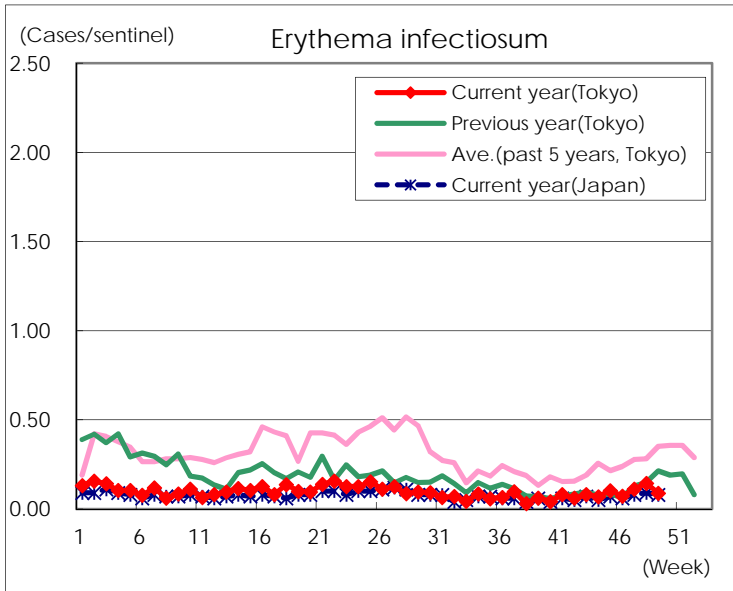
Number of patients with the diseases to be reported  
by the designated clinics and hospitals

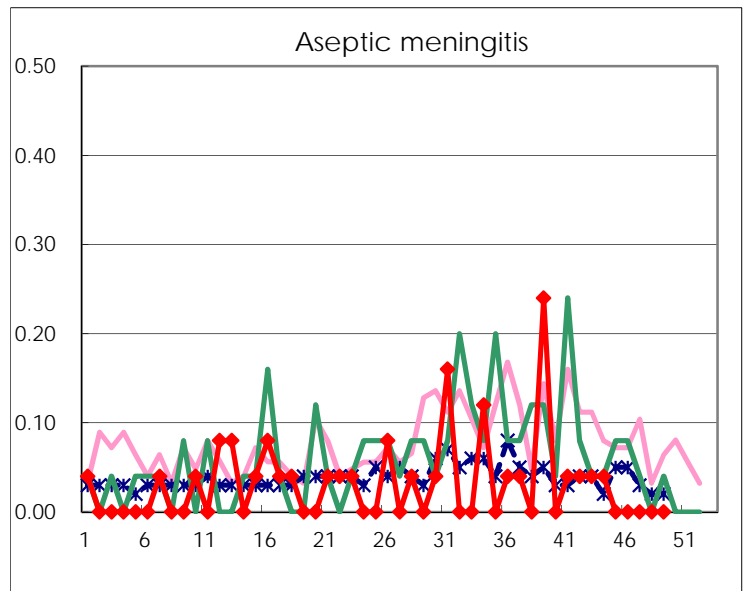
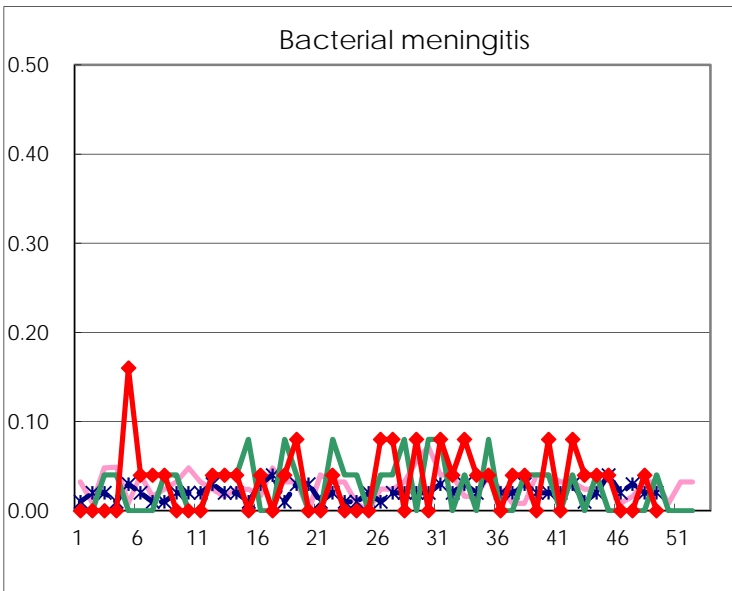
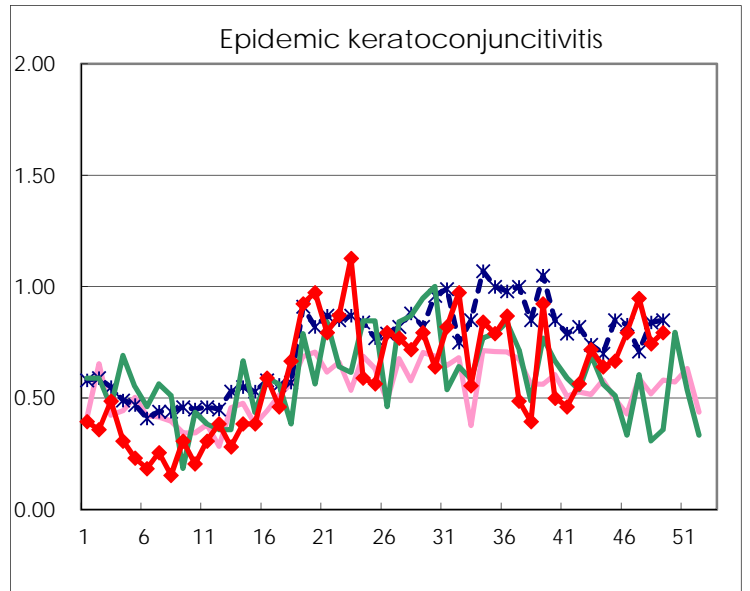
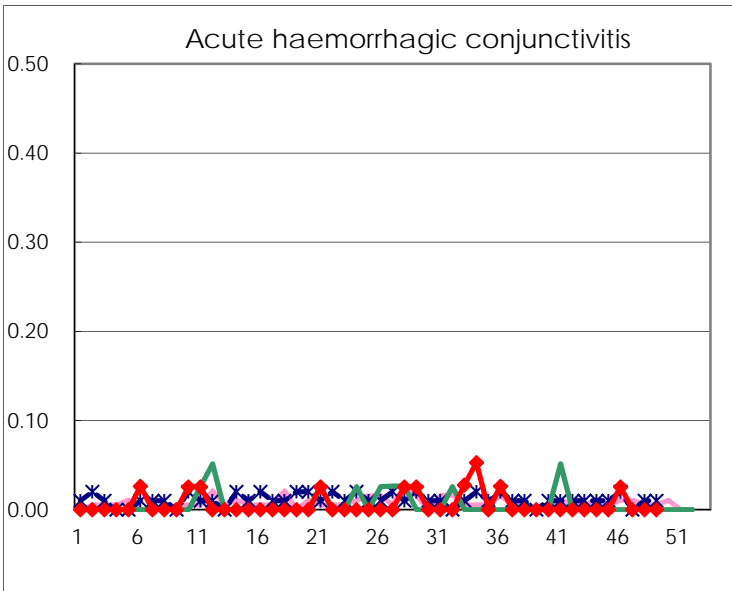
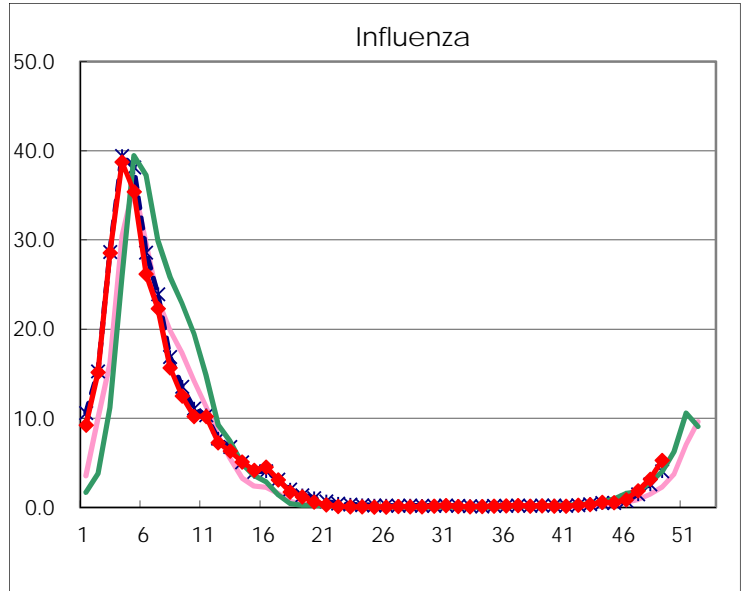
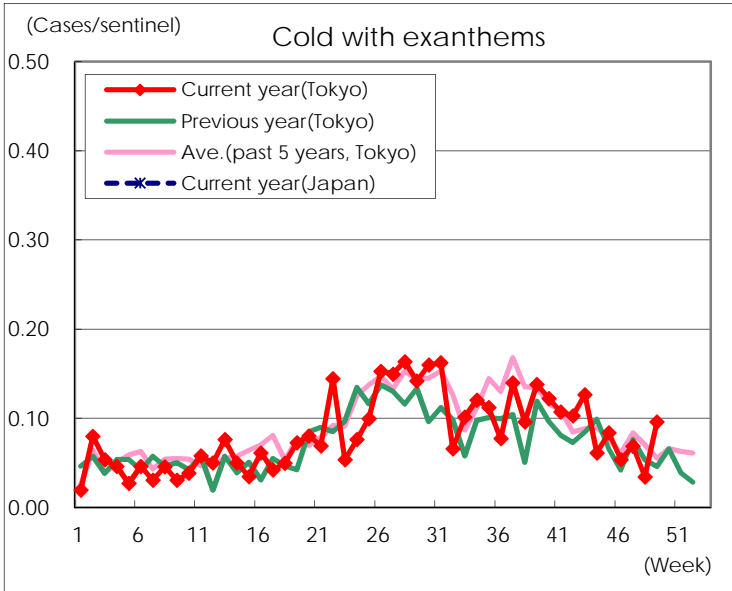
Diseases	Tokyo				
	46th	47th	48th	49th	/sentinel
Respiratory syncytial virus infection	82	69	76	103	0.39
Pharyngoconjunctival fever	172	176	203	186	0.71
Group A streptococcal pharyngitis	779	831	935	976	3.74
Infectious gastroenteritis	1,787	2,063	2,771	3,302	12.65
Chickenpox	167	176	186	176	0.67
Hand, foot, and mouth disease	301	301	209	180	0.69
Erythema infectiosum	19	29	38	23	0.09
Exanthem subitum	136	129	148	132	0.51
Pertussis	4	3	3	4	0.02
Herpangina	47	38	31	10	0.04
Mumps	48	36	30	31	0.12
Kawasaki disease	3	7	6	5	0.02
Cold with exanthems	14	18	9	25	0.10
Influenza	360	775	1,323	2,182	5.27
Acute hemorrhagic conjunctivitis	1				
Epidemic keratoconjunctivitis	31	36	29	31	0.79
Bacterial meningitis			1		
Aseptic meningitis					
Mycoplasma pneumonia	5	3	4	1	0.04
Chlamydial pneumonia (excluding psittacosis)	2	1	1	1	0.04
Infectious gastroenteritis (only by Rotavirus)		2			
Influenza-Associated Hospitalizations	1	15	6	11	0.44

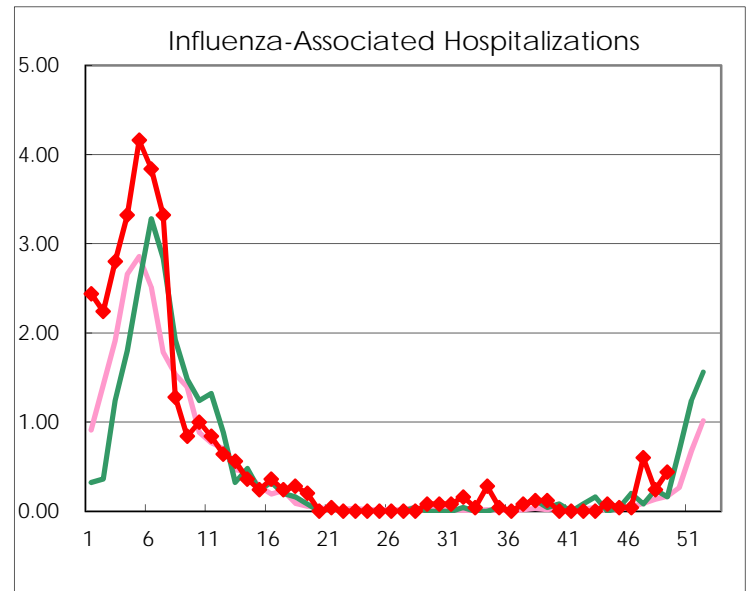
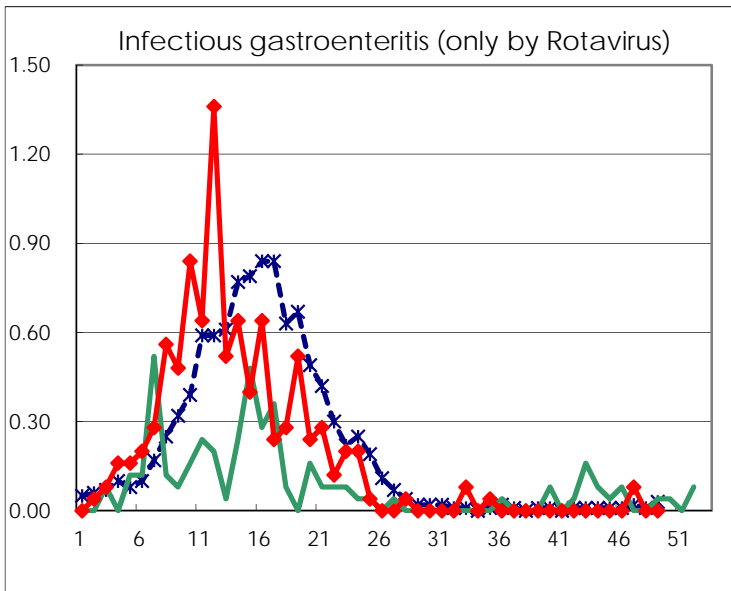
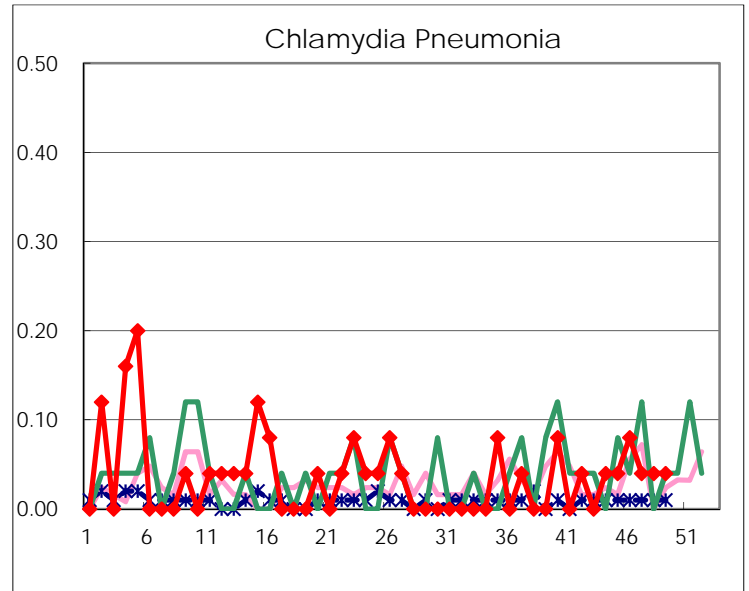
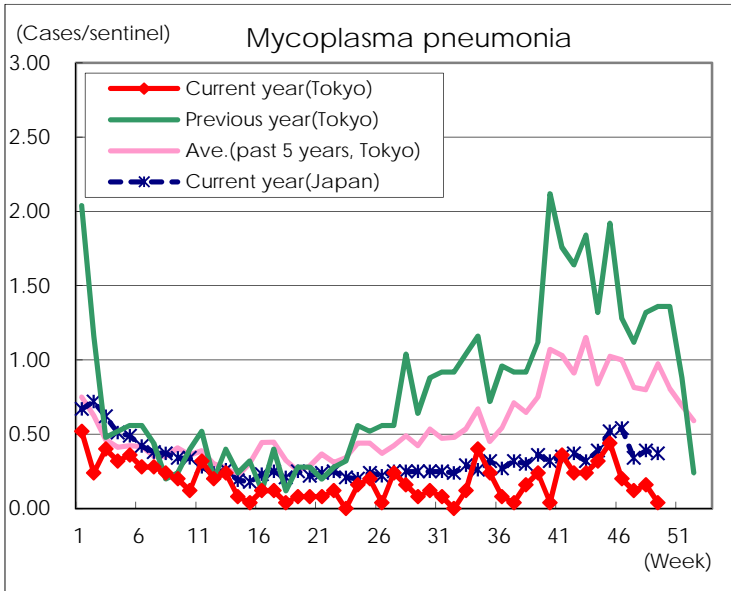
( Blank means 0. )

# Disease Trend Graph (weekly reported cases per sentinel in comparison)









Number of sentinel facilities for weekly reporting		
Types of sentinels	Number of sentinels	Sentinels having reported
Pediatric	264	261
Influenza	419	414
Ophthalmic	39	39
Specially-designated	25	25