

**21 December 2017 / Number 50**

## Surveillance System in Tokyo, Japan

The infectious diseases which all physicians must report

All physicians must report to health centers the incidence of the diseases which are shown at page one. Health centers electronically report the individual cases to Tokyo Metropolitan Infectious Disease Surveillance Center.

The infectious diseases required to be reported by the sentinels

The numbers of patients who visit the sentinel clinics or hospitals during a week are reported to health centers in Tokyo. And they electronically report the numbers to Tokyo Metropolitan Infectious Disease Surveillance Center. We have about 500 sentinel clinics and hospitals in Tokyo.

Tokyo Metropolitan Institute of Public Health

TEL:81-3-3363-3213 FAX:81-3-5332-7365

e-mail:[www@tokyo-eiken.go.jp](mailto:www@tokyo-eiken.go.jp)

URL:[idsc.tokyo-eiken.go.jp/](http://idsc.tokyo-eiken.go.jp/)

---

Number of patients with the diseases which all physicians must report

Category	Diseases	Tokyo				Japan		
		47th	48th	49th	50th	Cum 2017	50th	Cum 2017
I	Ebola hemorrhagic fever							
	Crimean-Congo hemorrhagic fever							
	Smallpox							
	South American hemorrhagic fever							
	Plague							
	Marburg disease							
	Lassa fever							
II	Acute poliomyelitis							
	Tuberculosis	79	72	45	55	3,311	317	21,885
	Diphtheria							
	Severe Acute Respiratory Syndrome(SARS)							
	Middle East Respiratory Syndrome (MERS)							
	Avian influenza H5N1							
	Avian influenza H7N9							
III	Cholera					2		7
	Shigellosis		2			33		139
	Enterohemorrhagic Escherichia coli infection	1	8			464	22	3,862
	Typhoid fever					8		37
	Paratyphoid fever					6		14
IV	Hepatitis E		2			54	4	298
	West Nile fever							
	Hepatitis A		1			61	3	264
	Echinococcosis					1		26
	Yellow fever							
	Psittacosis						2	13
	Omsk hemorrhagic fever							
	Relapsing fever					2		8
	Kyasanur forest disease							
	Q fever							
	Rabies							
	Coccidioidomycosis					1	1	2
	Monkeypox							
	Zika virus infection							5
	Severe Fever with Thrombocytopenia Syndrome							90
	Hemorrhagic fever with renal syndrome							
	Western equine encephalitis							
	Tick-borne encephalitis							2
	Anthrax							
	Chikungunya fever				1	3	1	5
	Scrub typhus(Tsutsugamushi disease)		2		2	9	41	388
	Dengue fever					65	2	243
	Eastern equine encephalitis							
	Avian influenza (excluding H5N1 and H7N9)							
	Nipah virus infection							
	Japanese spotted fever					1	1	332
	Japanese encephalitis							3
	Hantavirus pulmonary syndrome							
	Herpes B virus infection							
	Glanders							
	Brucellosis							2
	Venezuelan equine encephalitis							
Hendra virus infection								
Epidemic typhus								
Botulism			1		2		4	
Malaria	1		1		27	1	60	
Tularemia								
Lyme disease					1		19	
Lyssavirus infection(excluding rabies)								
Rift valley fever								
Melioidosis					1		1	
Legionellosis	2	2	3	5	156	14	1,682	
Leptospirosis					9		46	
Rocky mountain spotted fever								

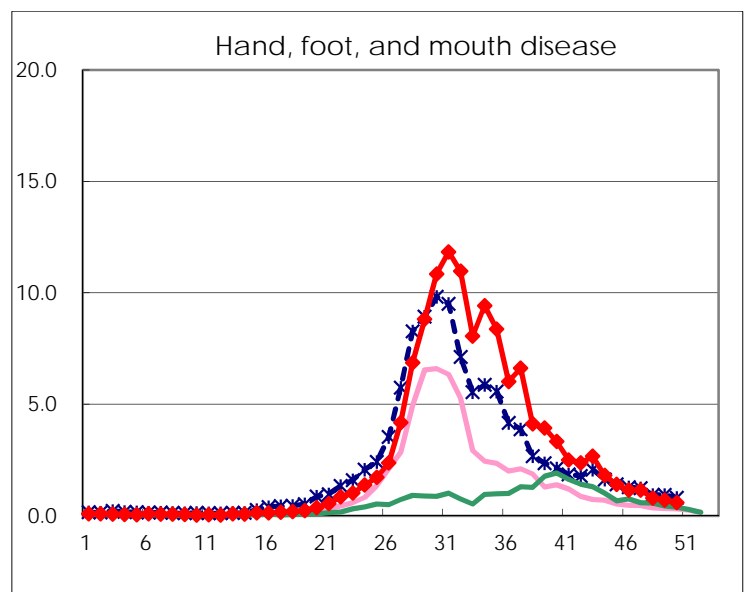
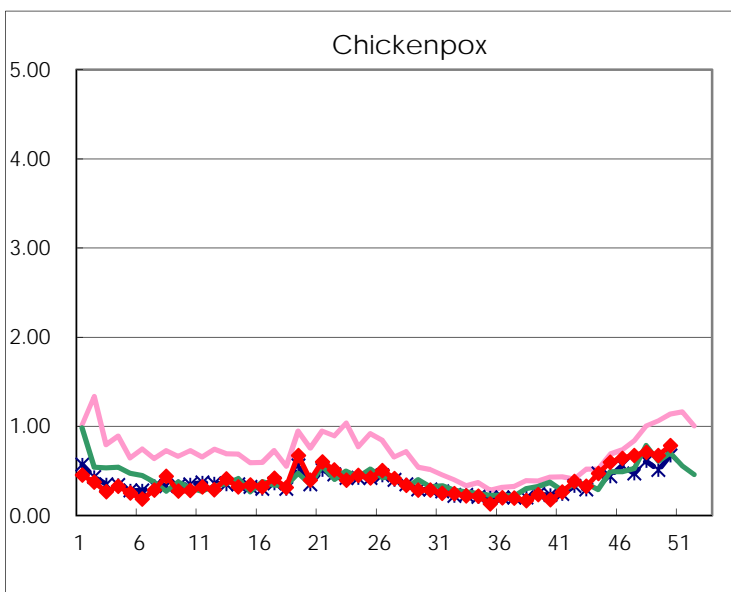
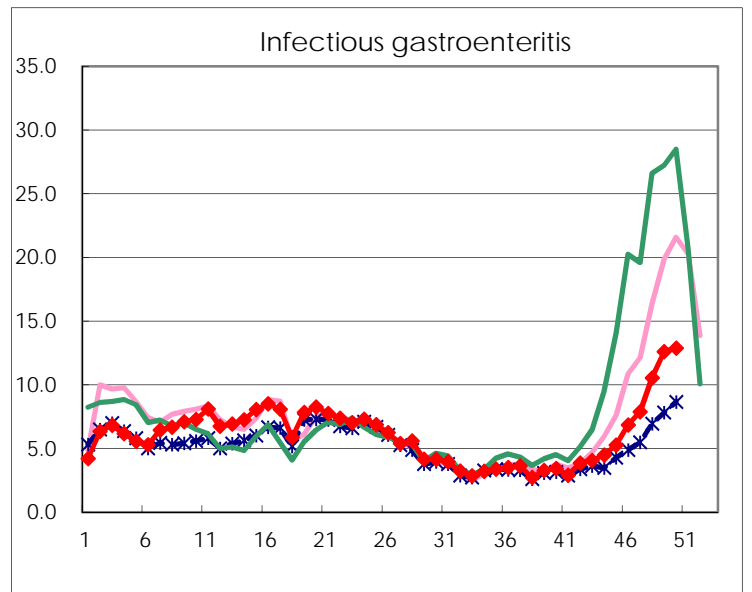
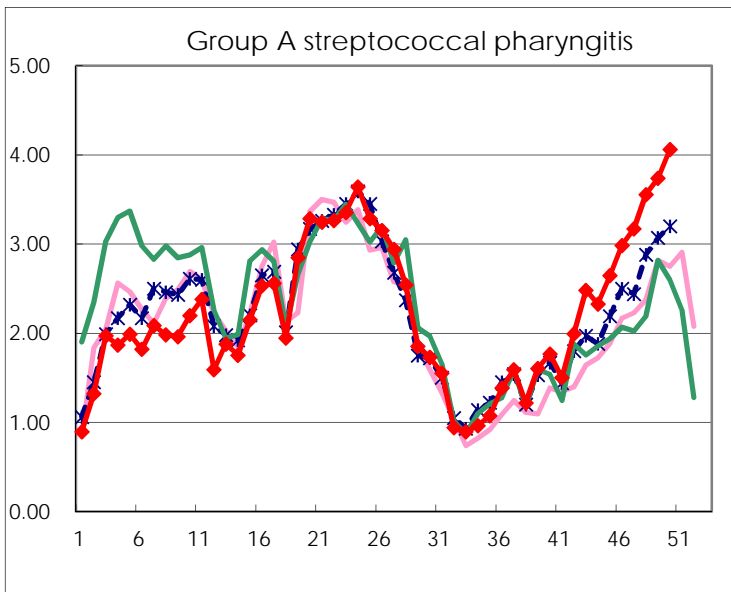
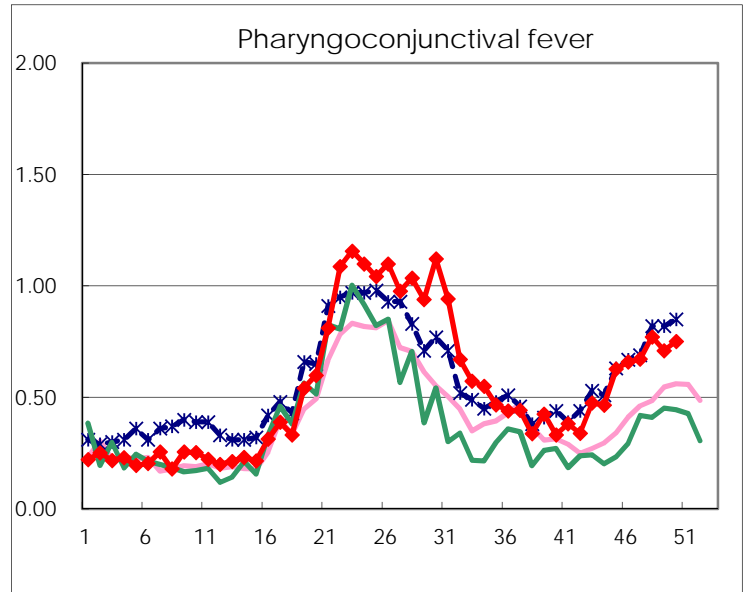
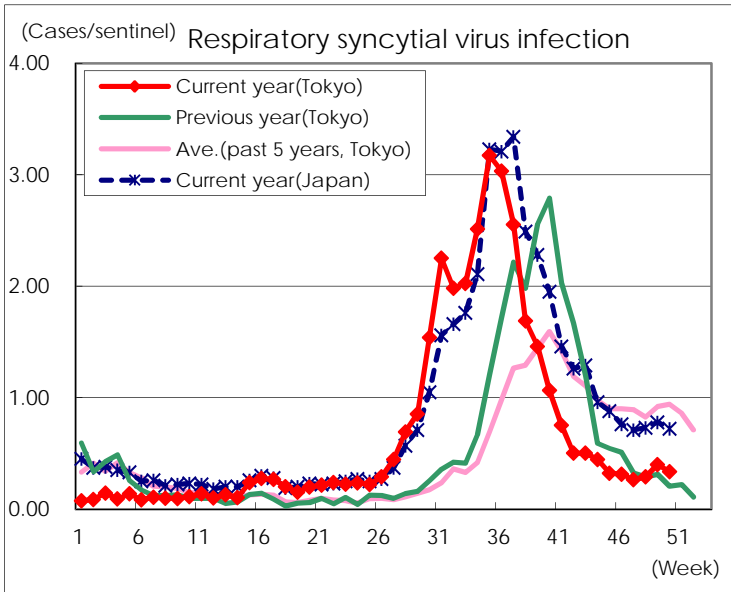
Category	Diseases	Tokyo					Japan	
		47th	48th	49th	50th	Cum 2017	50th	Cum 2017
V	Amebiasis	3	4	4	4	211	18	1,033
	Viral hepatitis(excluding hepatitis A and E)	2	2	3	1	64	4	279
	CRE infection	3	1	7	1	207	19	1,581
	Acute encephalitis(excluding JE and WNE)			2	3	68	9	649
	Cryptosporidiosis					2		19
	Creutzfeldt-Jakob disease		1	3		19	1	190
	Severe invasive streptococcal infections(TSLS)		2	1	2	69	10	539
	Acquired immunodeficiency syndrome (AIDS)	9	8	9	6	448	12	1,320
	Giardiasis		1		1	24	2	58
	Invasive <i>Haemophilus influenzae</i> disease	1	2	1	1	52	7	349
	Invasive meningococcal disease					3		23
	Invasive pneumococcal disease	7	5	11	7	379	48	3,008
	Varicella (limited to hospitalized case)	2	1		1	54	9	299
	Congenital rubella syndrome							
	Syphilis	29	32	40	38	1,723	81	5,534
	Disseminated cryptococcosis		1			14	2	128
	Tetanus	1		1	1	9	2	124
	Vancomycin-resistant <i>S. aureus</i> infection							
	Vancomycin-resistant Enterococcus infection				1	8		77
	Rubella		1			22		87
Measles					28		188	
MDRA infection			1		6		27	

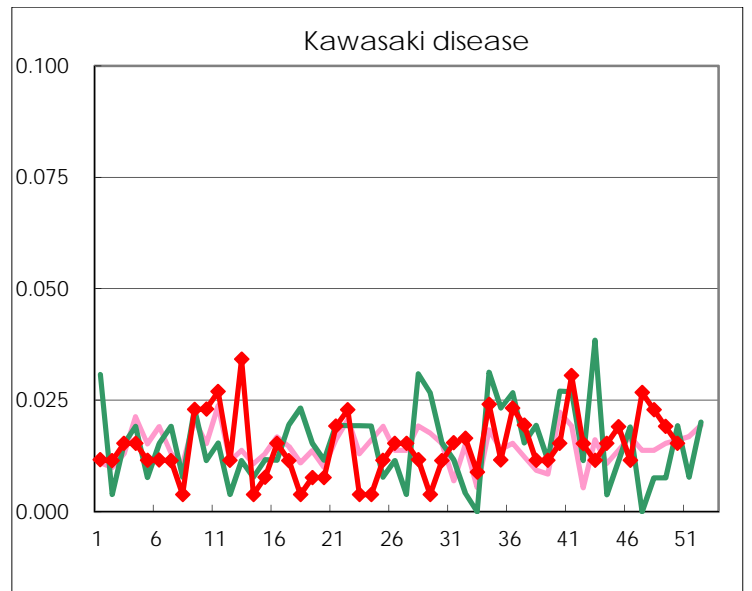
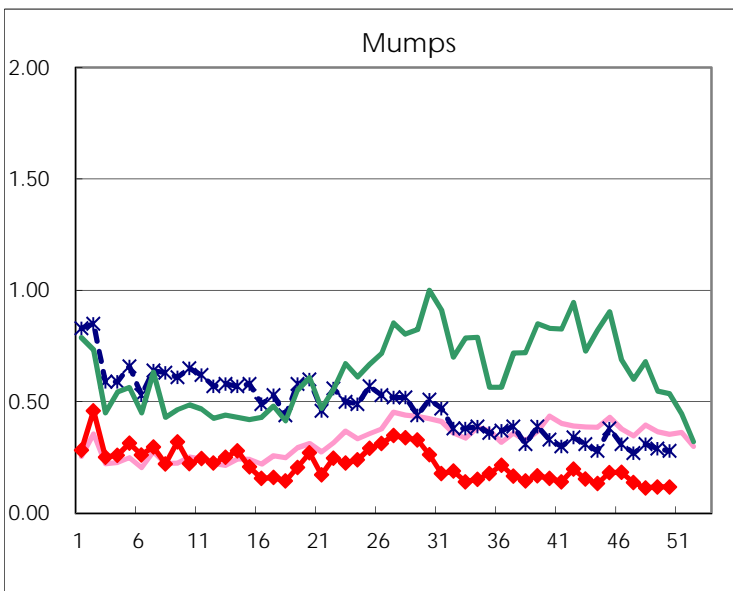
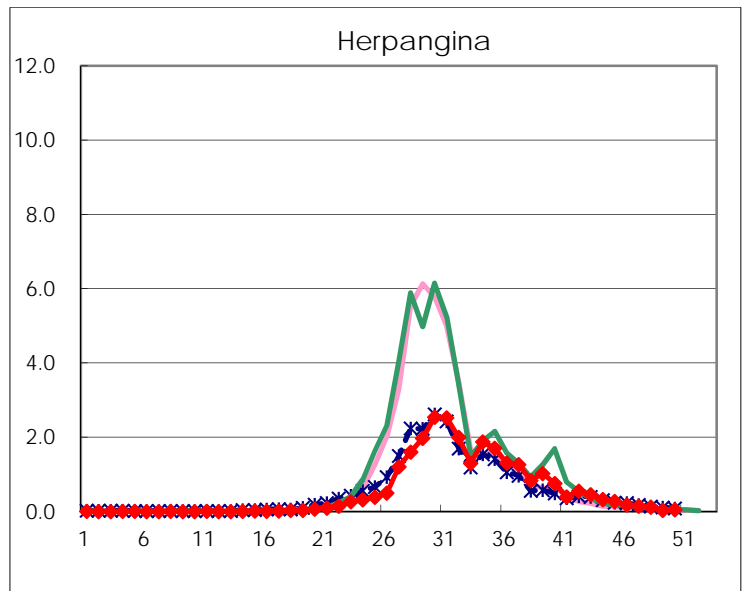
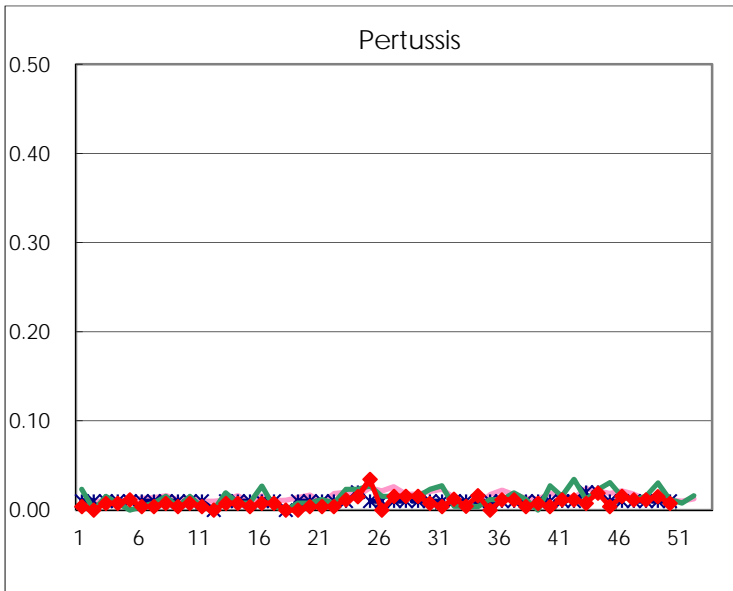
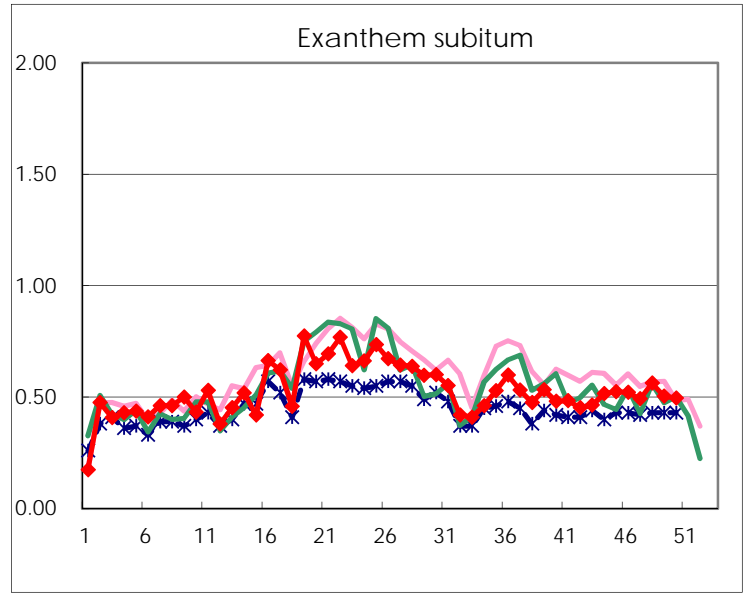
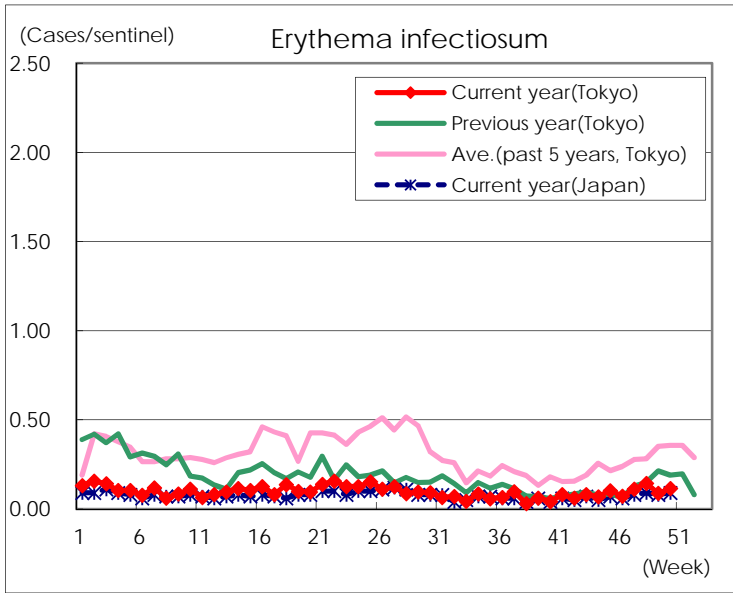
Number of patients with the diseases to be reported  
by the designated clinics and hospitals

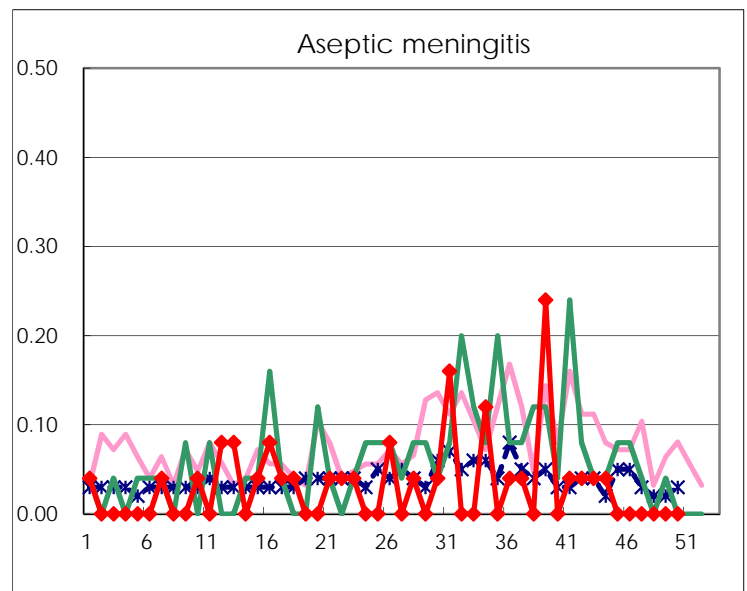
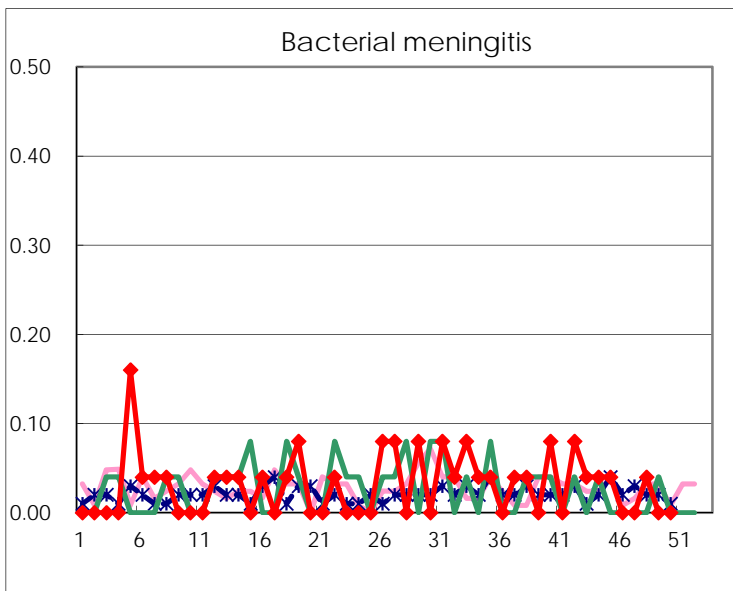
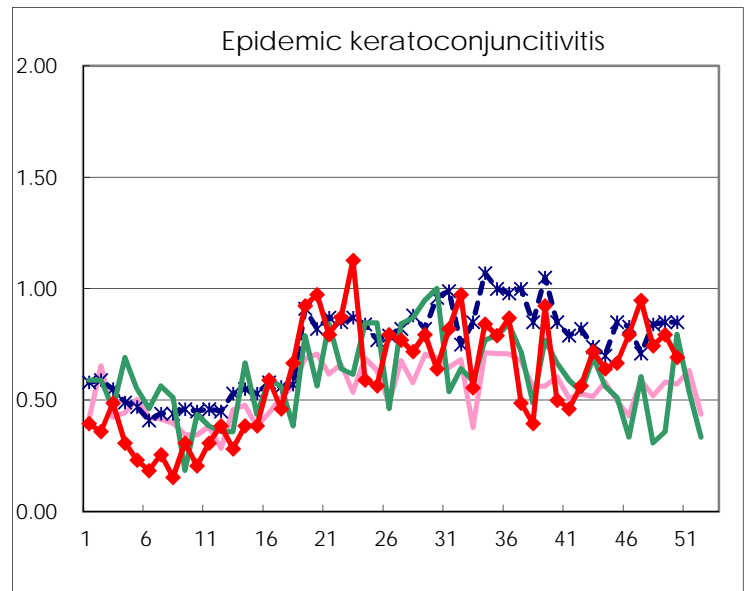
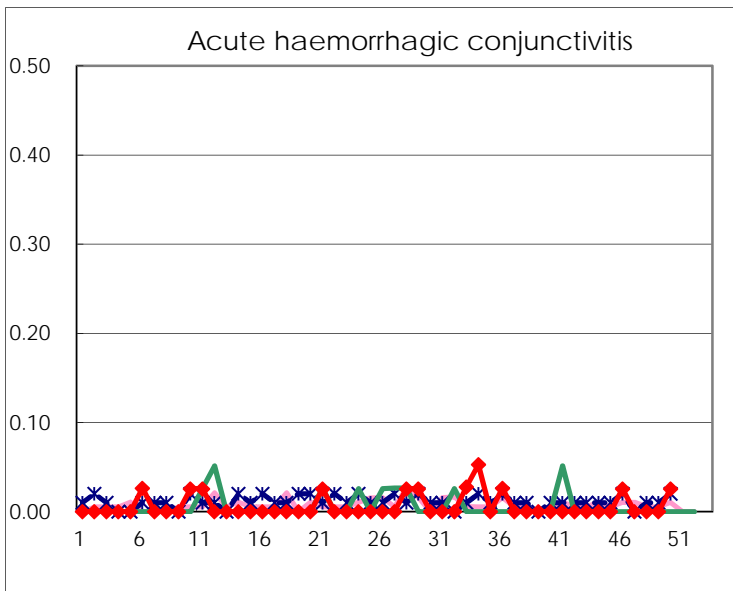
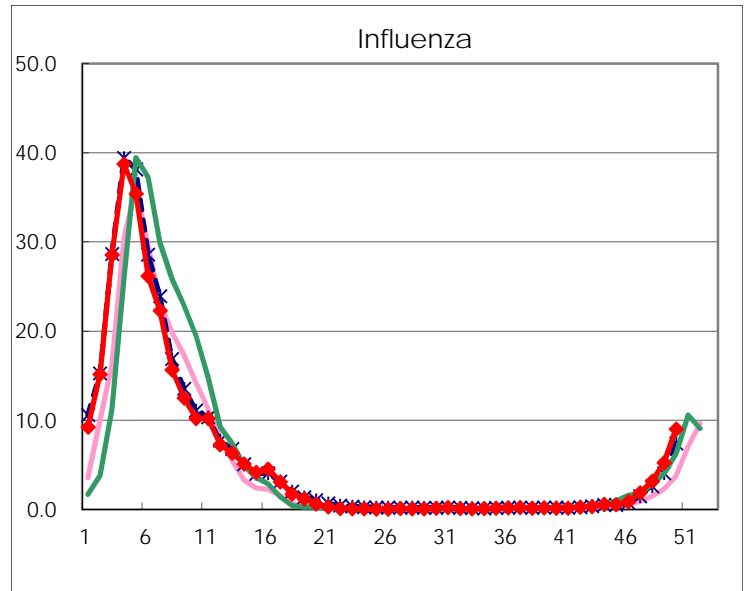
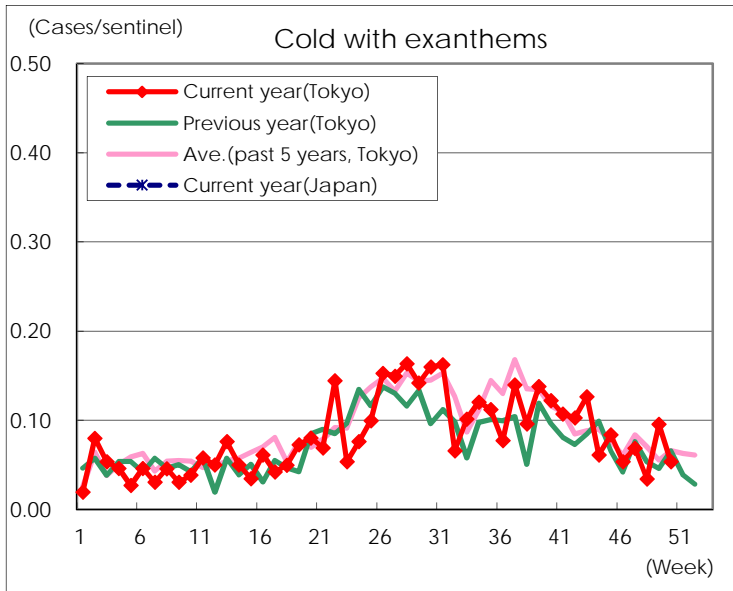
Diseases	Tokyo				
	47th	48th	49th	50th	/sentinel
Respiratory syncytial virus infection	69	76	105	88	0.34
Pharyngoconjunctival fever	176	203	186	197	0.75
Group A streptococcal pharyngitis	831	935	979	1,064	4.06
Infectious gastroenteritis	2,063	2,771	3,302	3,374	12.88
Chickenpox	176	186	176	205	0.78
Hand, foot, and mouth disease	301	209	184	153	0.58
Erythema infectiosum	29	38	23	30	0.11
Exanthem subitum	129	148	132	130	0.50
Pertussis	3	3	4	2	0.01
Herpangina	38	31	10	14	0.05
Mumps	36	30	31	31	0.12
Kawasaki disease	7	6	5	4	0.02
Cold with exanthems	18	9	25	14	0.05
Influenza	775	1,323	2,189	3,756	9.03
Acute hemorrhagic conjunctivitis				1	0.03
Epidemic keratoconjunctivitis	36	29	31	27	0.69
Bacterial meningitis		1			
Aseptic meningitis					
Mycoplasma pneumonia	3	4	1	4	0.16
Chlamydial pneumonia (excluding psittacosis)	1	1	1		
Infectious gastroenteritis (only by Rotavirus)	2			1	0.04
Influenza-Associated Hospitalizations	15	6	12	20	0.80

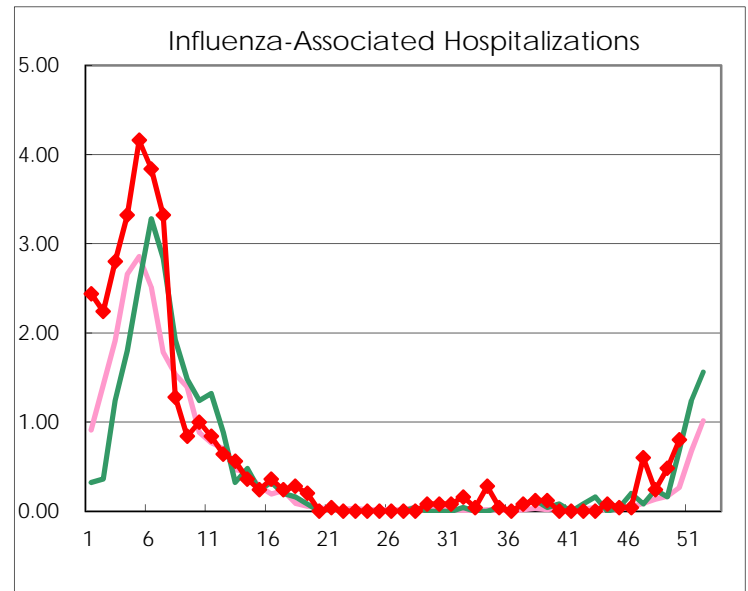
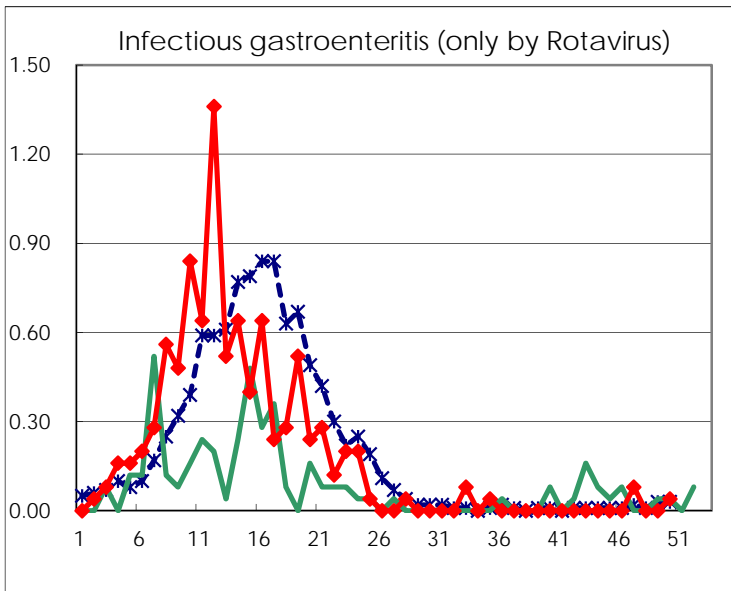
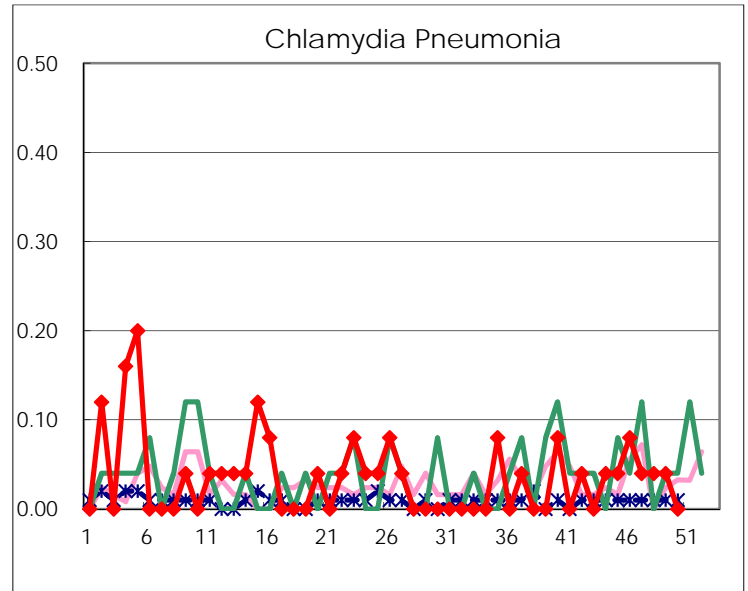
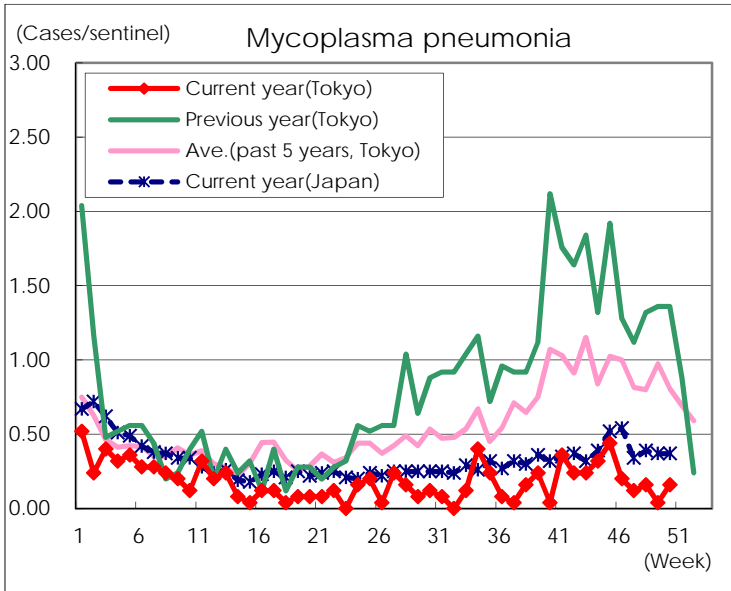
( Blank means 0. )

# Disease Trend Graph (weekly reported cases per sentinel in comparison)









Number of sentinel facilities for weekly reporting		
Types of sentinels	Number of sentinels	Sentinels having reported
Pediatric	264	262
Influenza	419	416
Ophthalmic	39	39
Specially-designated	25	25