

## 28 December 2017 / Number 51

### Surveillance System in Tokyo, Japan

The infectious diseases which all physicians must report

All physicians must report to health centers the incidence of the diseases which are shown at page one. Health centers electronically report the individual cases to Tokyo Metropolitan Infectious Disease Surveillance Center.

The infectious diseases required to be reported by the sentinels

The numbers of patients who visit the sentinel clinics or hospitals during a week are reported to health centers in Tokyo. And they electronically report the numbers to Tokyo Metropolitan Infectious Disease Surveillance Center. We have about 500 sentinel clinics and hospitals in Tokyo.

Tokyo Metropolitan Institute of Public Health

TEL:81-3-3363-3213 FAX:81-3-5332-7365

e-mail:[www@tokyo-eiken.go.jp](mailto:www@tokyo-eiken.go.jp)

URL:[idsc.tokyo-eiken.go.jp/](http://idsc.tokyo-eiken.go.jp/)

---

Number of patients with the diseases which all physicians must report

Category	Diseases	Tokyo					Japan	
		48th	49th	50th	51st	Cum 2017	51st	Cum 2017
I	Ebola hemorrhagic fever							
	Crimean-Congo hemorrhagic fever							
	Smallpox							
	South American hemorrhagic fever							
	Plague							
	Marburg disease							
	Lassa fever							
II	Acute poliomyelitis							
	Tuberculosis	74	50	61	57	3,380	340	22,366
	Diphtheria							
	Severe Acute Respiratory Syndrome(SARS)							
	Middle East Respiratory Syndrome (MERS)							
	Avian influenza H5N1							
	Avian influenza H7N9							
III	Cholera					2		7
	Shigellosis	2			1	34	2	141
	Enterohemorrhagic Escherichia coli infection	8			1	465	11	3,873
	Typhoid fever					8		37
	Paratyphoid fever					6		14
IV	Hepatitis E	2			3	57	3	302
	West Nile fever							
	Hepatitis A	1			3	64	8	273
	Echinococcosis					1		26
	Yellow fever							
	Psittacosis						2	15
	Omsk hemorrhagic fever							
	Relapsing fever					2		8
	Kyasanur forest disease							
	Q fever							
	Rabies							
	Coccidioidomycosis					1	1	3
	Monkeypox							
	Zika virus infection							5
	Severe Fever with Thrombocytopenia Syndrome							90
	Hemorrhagic fever with renal syndrome							
	Western equine encephalitis							
	Tick-borne encephalitis							2
	Anthrax							
	Chikungunya fever			1		3		5
	Scrub typhus(Tsutsugamushi disease)	2		2	1	10	22	417
	Dengue fever					65	1	244
	Eastern equine encephalitis							
	Avian influenza (excluding H5N1 and H7N9)							
	Nipah virus infection							
	Japanese spotted fever					1	1	334
	Japanese encephalitis							3
	Hantavirus pulmonary syndrome							
	Herpes B virus infection							
	Glanders							
	Brucellosis							2
	Venezuelan equine encephalitis							
Hendra virus infection								
Epidemic typhus								
Botulism		1			2		4	
Malaria		1			27	1	61	
Tularemia								
Lyme disease					1		19	
Lyssavirus infection(excluding rabies)								
Rift valley fever								
Melioidosis					1		1	
Legionellosis	2	3	5	1	157	12	1,701	
Leptospirosis					9	1	47	
Rocky mountain spotted fever								

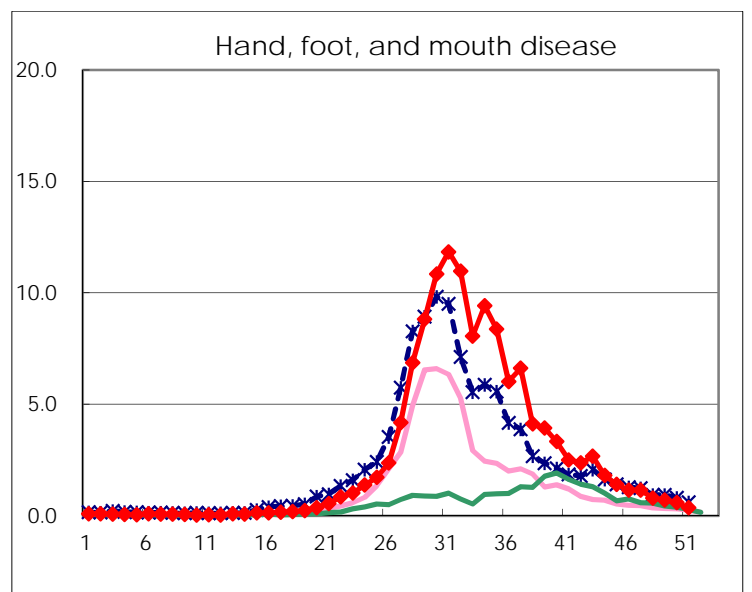
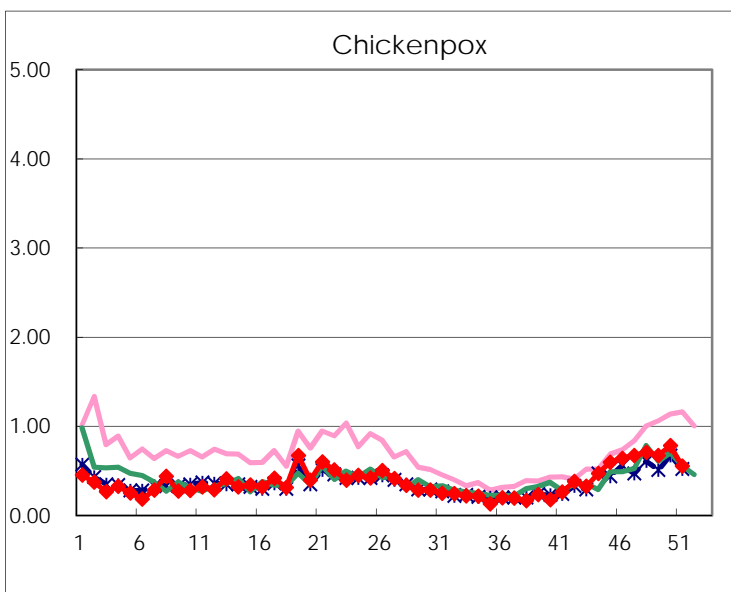
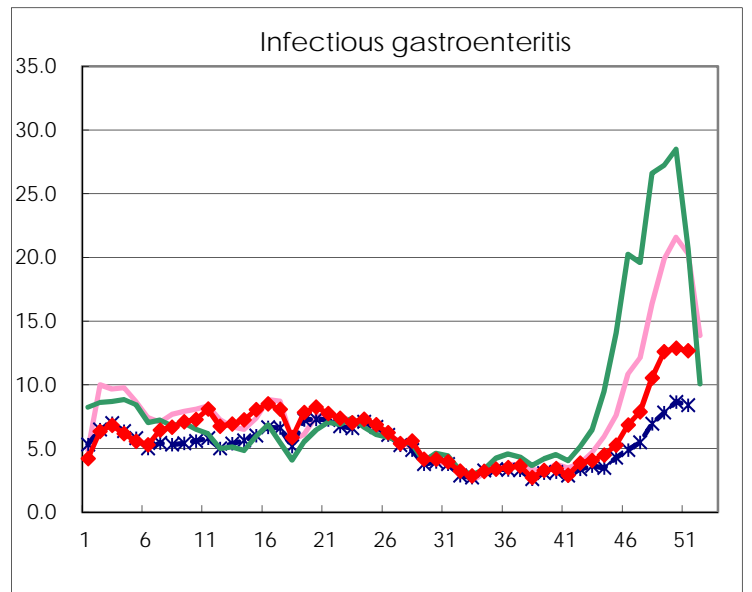
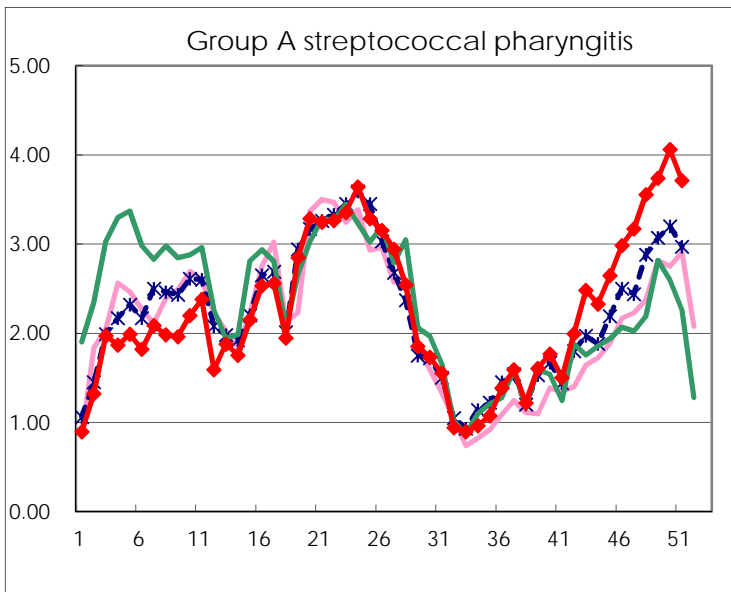
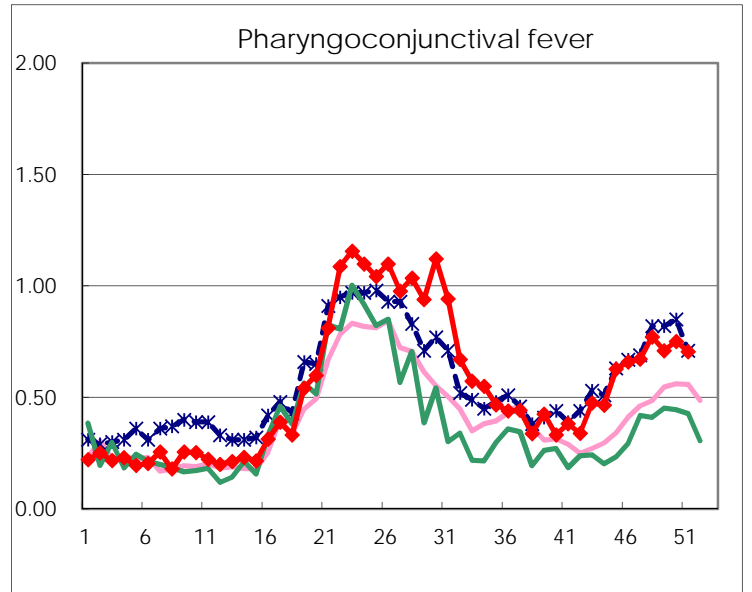
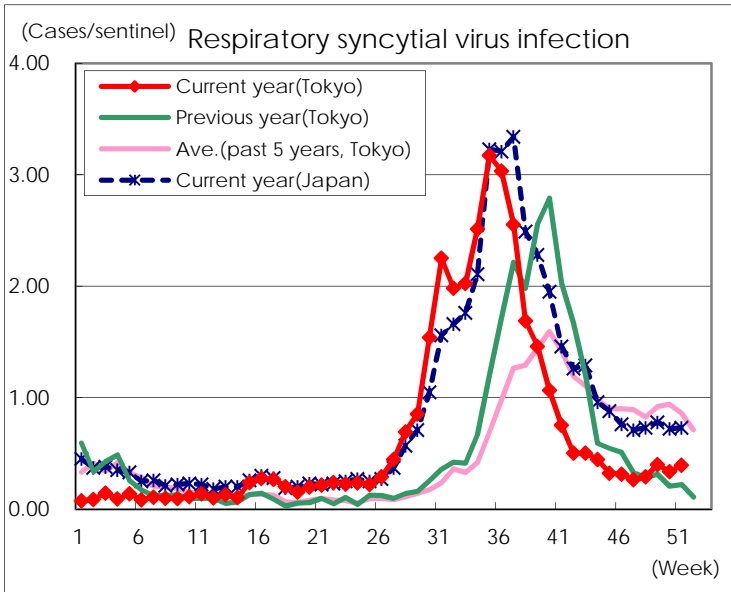
Category	Diseases	Tokyo				Japan		
		48th	49th	50th	51st	Cum 2017	51st	Cum 2017
V	Amebiasis	4	4	4	4	215	10	1,054
	Viral hepatitis(excluding hepatitis A and E)	2	3	1	2	66	4	286
	CRE infection	1	7	1		207	21	1,608
	Acute encephalitis(excluding JE and WNE)		2	3	2	70	14	671
	Cryptosporidiosis					2		19
	Creutzfeldt-Jakob disease	1	3			19	7	196
	Severe invasive streptococcal infections(TSLS)	2	1	2	3	72	9	556
	Acquired immunodeficiency syndrome (AIDS)	8	9	6	9	457	19	1,349
	Giardiasis	1		1		24	1	59
	Invasive <i>Haemophilus influenzae</i> disease	2	1	1	2	54	8	358
	Invasive meningococcal disease					3		23
	Invasive pneumococcal disease	5	11	7	5	384	49	3,084
	Varicella (limited to hospitalized case)	1		1		54	3	304
	Congenital rubella syndrome							
	Syphilis	32	40	39	24	1,748	69	5,662
	Disseminated cryptococcosis	1			1	15	1	130
	Tetanus		1	1		9		124
	Vancomycin-resistant <i>S. aureus</i> infection							
	Vancomycin-resistant Enterococcus infection			1		8		77
	Rubella	1				22	4	91
Measles					28	1	189	
MDRA infection		1			6		27	

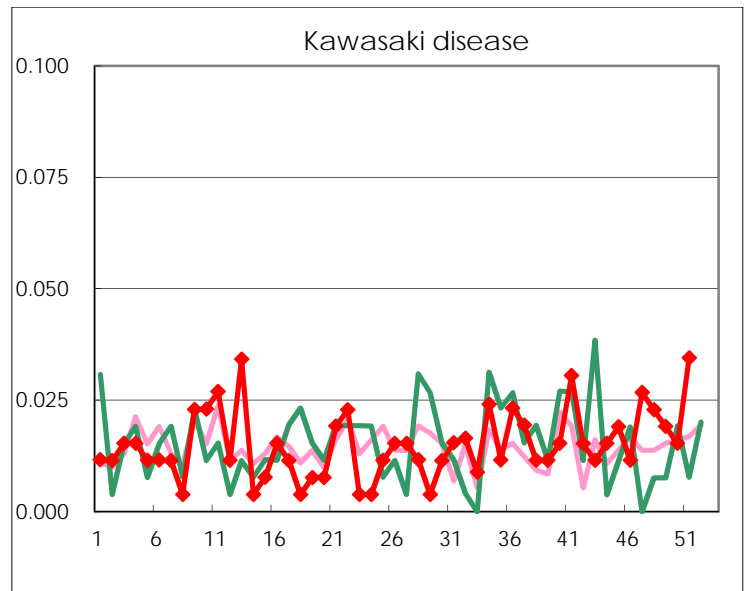
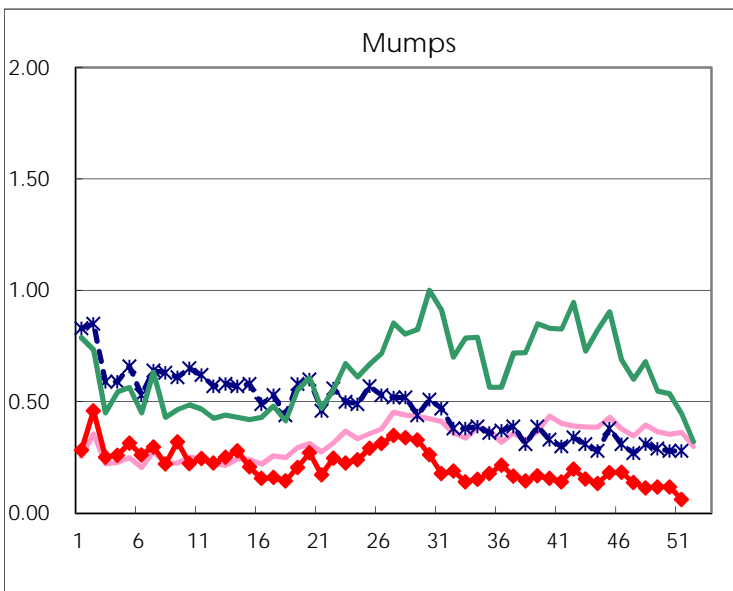
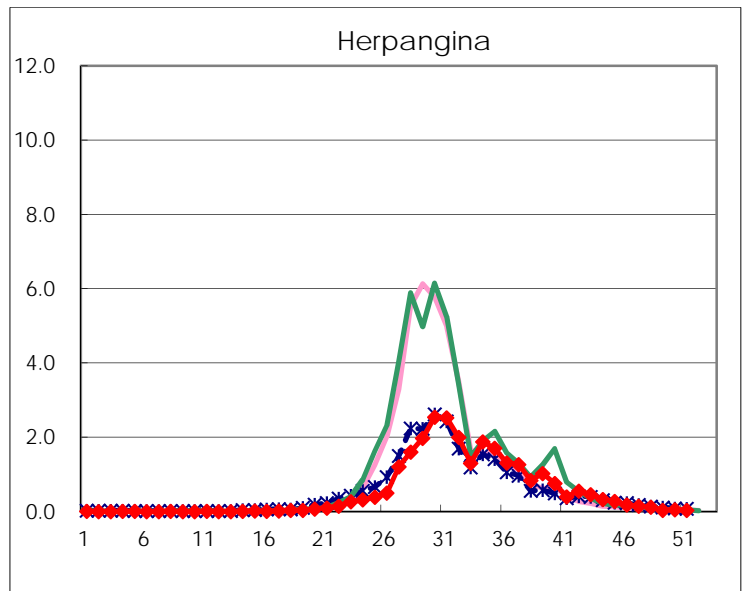
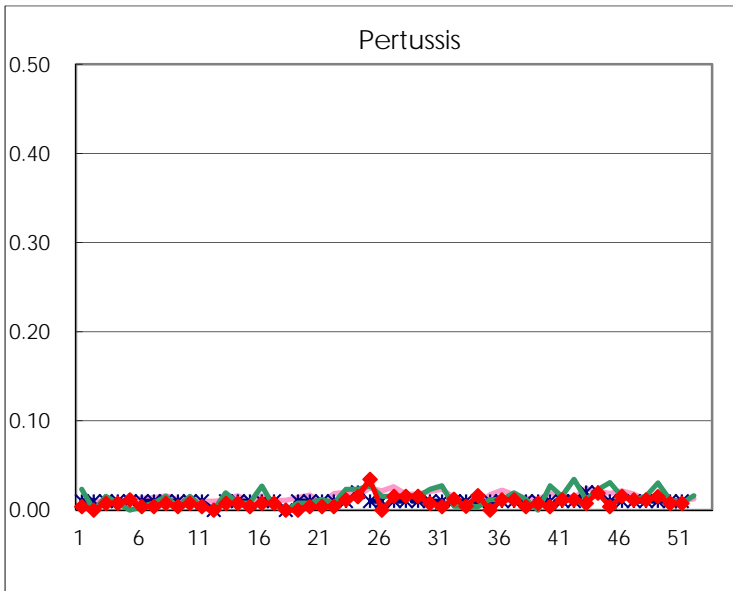
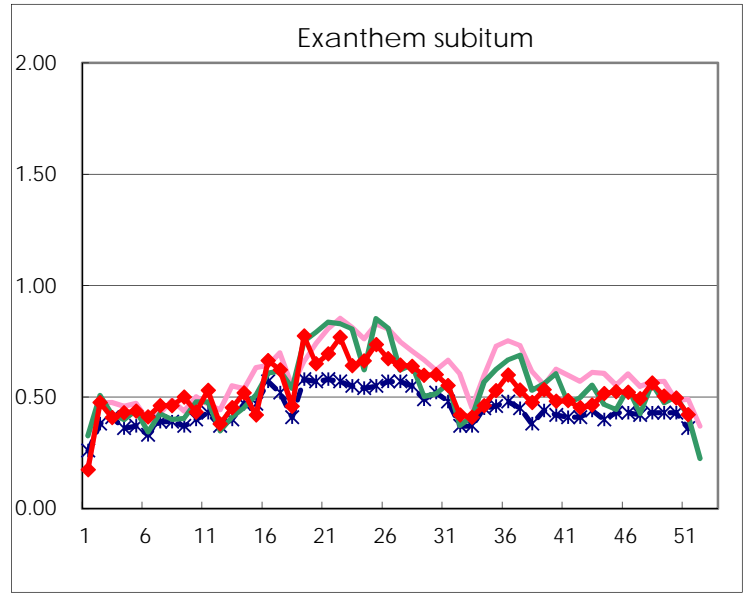
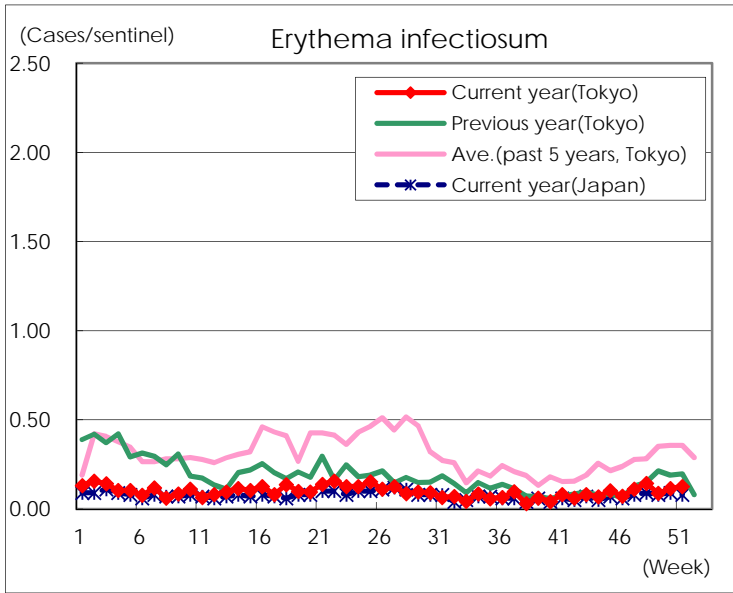
Number of patients with the diseases to be reported  
by the designated clinics and hospitals

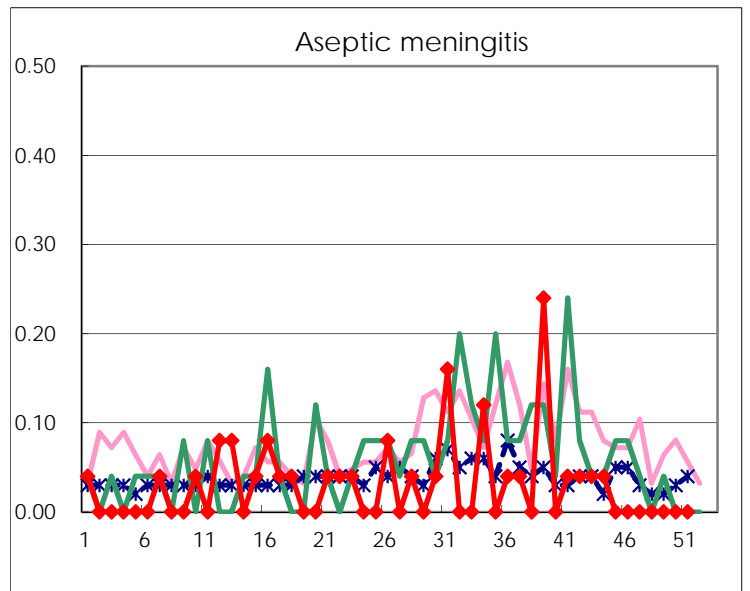
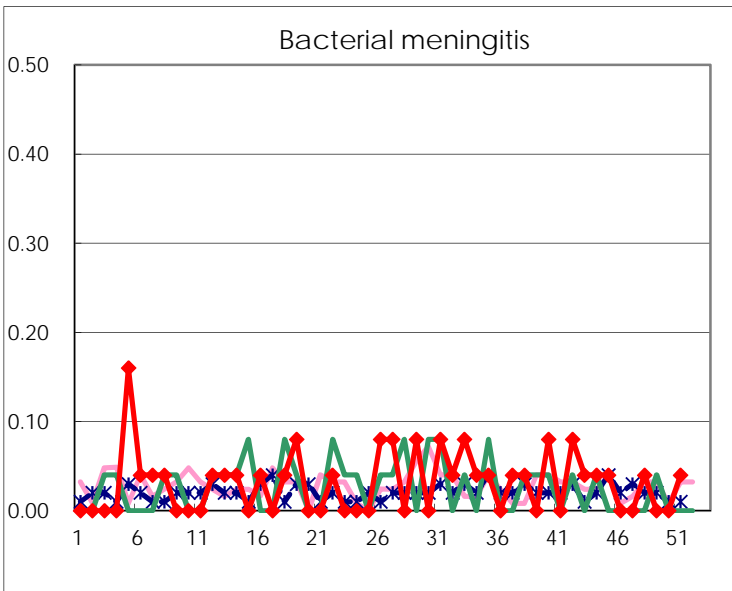
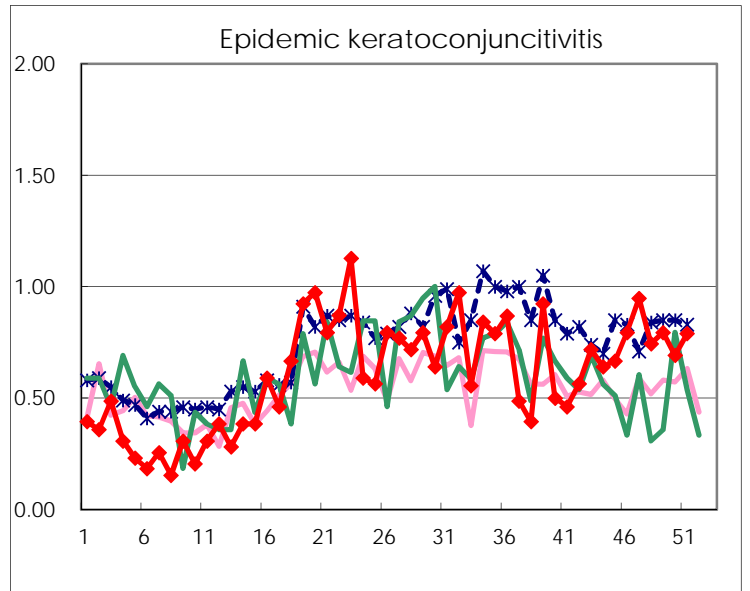
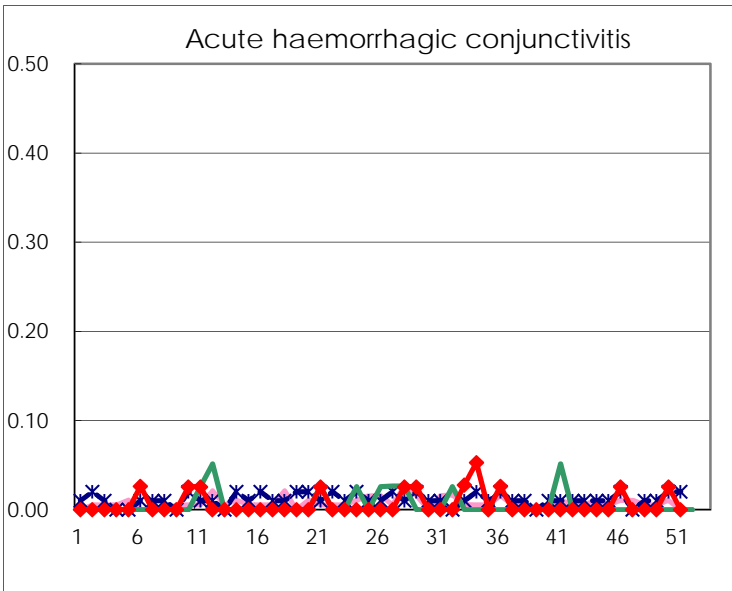
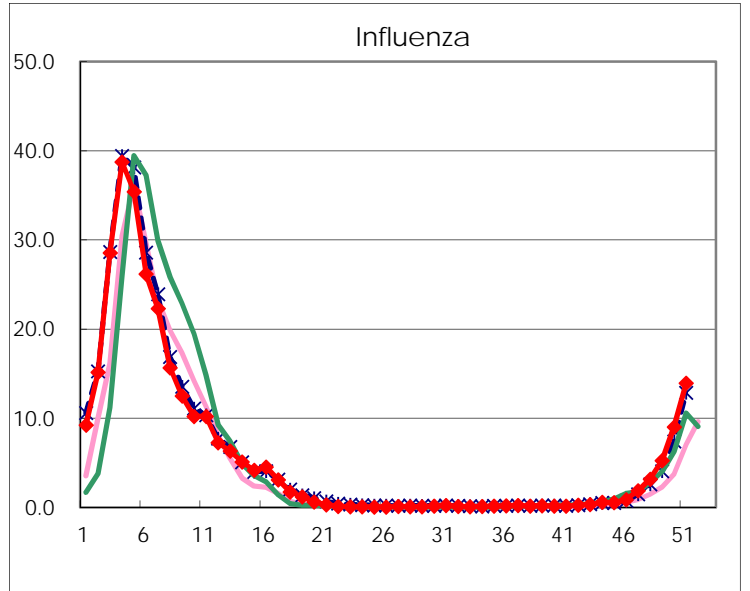
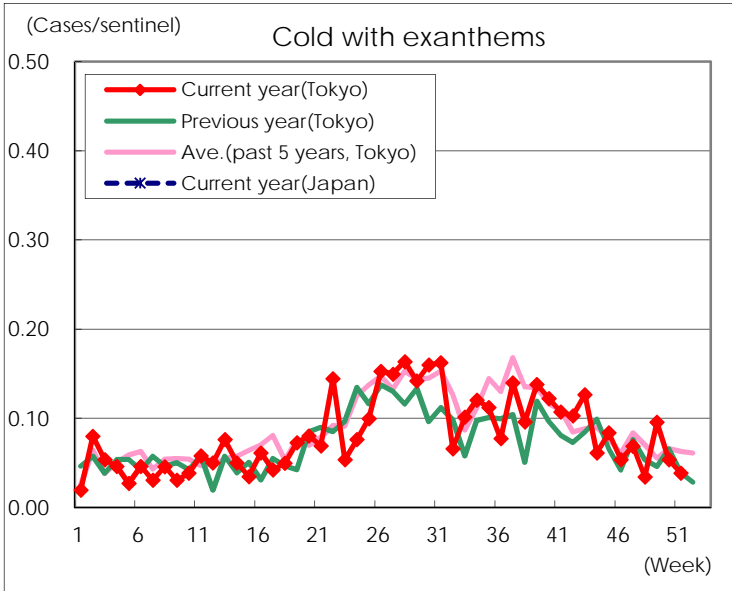
Diseases	Tokyo				
	48th	49th	50th	51st	/sentinel
Respiratory syncytial virus infection	76	105	88	103	0.39
Pharyngoconjunctival fever	203	186	197	184	0.70
Group A streptococcal pharyngitis	935	979	1,064	969	3.71
Infectious gastroenteritis	2,771	3,302	3,374	3,305	12.66
Chickenpox	186	176	205	144	0.55
Hand, foot, and mouth disease	209	184	153	93	0.36
Erythema infectiosum	38	23	30	33	0.13
Exanthem subitum	148	132	130	110	0.42
Pertussis	3	4	2	2	0.01
Herpangina	31	10	14	10	0.04
Mumps	30	31	31	16	0.06
Kawasaki disease	6	5	4	9	0.03
Cold with exanthems	9	25	14	10	0.04
Influenza	1,323	2,189	3,756	5,766	13.93
Acute hemorrhagic conjunctivitis			1		
Epidemic keratoconjunctivitis	29	31	27	30	0.79
Bacterial meningitis	1			1	0.04
Aseptic meningitis					
Mycoplasma pneumonia	4	1	4	2	0.08
Chlamydial pneumonia (excluding psittacosis)	1	1			
Infectious gastroenteritis (only by Rotavirus)			1		
Influenza-Associated Hospitalizations	6	12	21	41	1.64

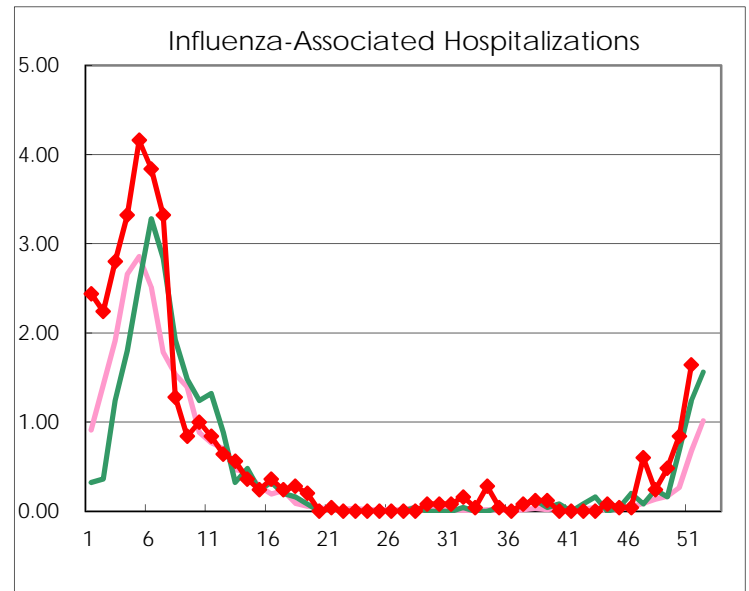
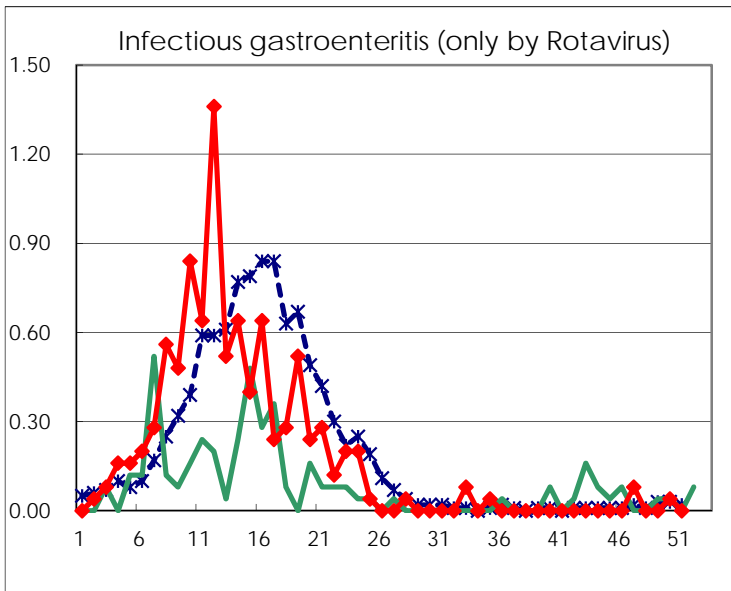
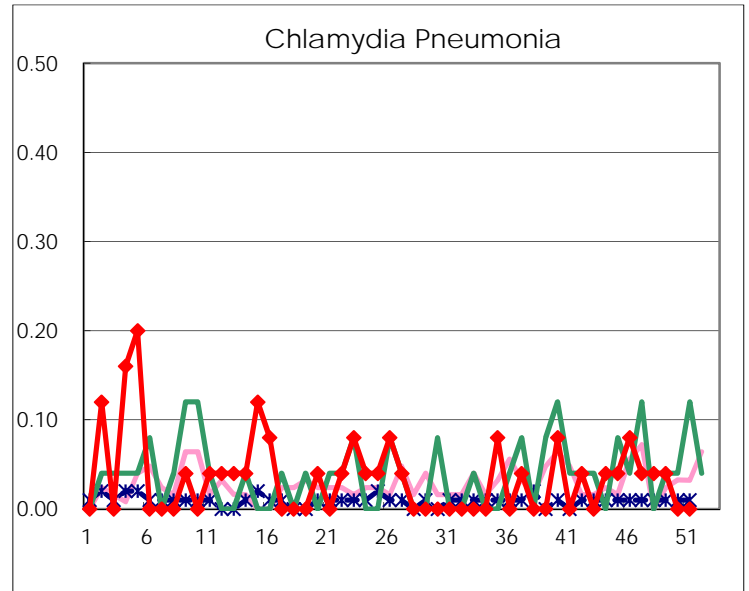
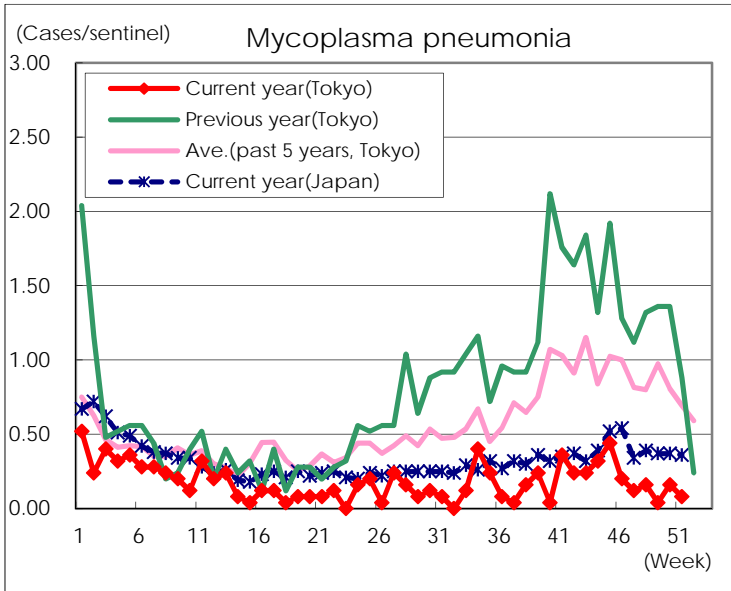
( Blank means 0. )

# Disease Trend Graph (weekly reported cases per sentinel in comparison)









Number of sentinel facilities for weekly reporting		
Types of sentinels	Number of sentinels	Sentinels having reported
Pediatric	264	261
Influenza	419	414
Ophthalmic	39	38
Specially-designated	25	25