

## 1 February 2018 / Number 4

### Surveillance System in Tokyo, Japan

The infectious diseases which all physicians must report

All physicians must report to health centers the incidence of the diseases which are shown at page one. Health centers electronically report the individual cases to Tokyo Metropolitan Infectious Disease Surveillance Center.

The infectious diseases required to be reported by the sentinels

The numbers of patients who visit the sentinel clinics or hospitals during a week are reported to health centers in Tokyo. And they electronically report the numbers to Tokyo Metropolitan Infectious Disease Surveillance Center. We have about 500 sentinel clinics and hospitals in Tokyo.

Tokyo Metropolitan Institute of Public Health

TEL:81-3-3363-3213 FAX:81-3-5332-7365

e-mail:[www@tokyo-eiken.go.jp](mailto:www@tokyo-eiken.go.jp)

URL:[idsc.tokyo-eiken.go.jp/](http://idsc.tokyo-eiken.go.jp/)

---

Number of patients with the diseases which all physicians must report

Category	Diseases	Tokyo					Japan	
		1st	2nd	3rd	4th	Cum 2018	4th	Cum 2018
I	Ebola hemorrhagic fever							
	Crimean-Congo hemorrhagic fever							
	Smallpox							
	South American hemorrhagic fever							
	Plague							
	Marburg disease							
II	Lassa fever							
	Acute poliomyelitis							
	Tuberculosis	18	45	56	63	182	304	1,188
	Diphtheria							
	Severe Acute Respiratory Syndrome(SARS)							
	Middle East Respiratory Syndrome (MERS)							
III	Avian influenza H5N1							
	Avian influenza H7N9							
	Cholera							2
	Shigellosis		1	2		3	1	9
	Enterohemorrhagic Escherichia coli infection	2	1			3	8	38
IV	Typhoid fever				1	1	1	3
	Paratyphoid fever							
	Hepatitis E			3	1	4	4	13
	West Nile fever							
	Hepatitis A		3	3	2	8	3	19
	Echinococcosis							
	Yellow fever							
	Psittacosis							
	Omsk hemorrhagic fever							
	Relapsing fever							
	Kyasanur forest disease							
	Q fever						1	1
	Rabies							
	Coccidioidomycosis							
	Monkeypox							
	Zika virus infection							
	Severe Fever with Thrombocytopenia Syndrome							
	Hemorrhagic fever with renal syndrome							
	Western equine encephalitis							
	Tick-borne encephalitis							
	Anthrax							
	Chikungunya fever							
	Scrub typhus(Tsutsugamushi disease)			1		1	3	30
	Dengue fever	2	1	2		5	1	6
	Eastern equine encephalitis							
	Avian influenza (excluding H5N1 and H7N9)							
	Nipah virus infection							
	Japanese spotted fever							
	Japanese encephalitis							
	Hantavirus pulmonary syndrome							
	Herpes B virus infection							
	Glanders							
Brucellosis								
Venezuelan equine encephalitis								
Hendra virus infection								
Epidemic typhus								
Botulism	1				1		1	
Malaria						1	3	
Tularemia								
Lyme disease								
Lyssavirus infection(excluding rabies)								
Rift valley fever								
Melioidosis								
Legionellosis		1	1	2	4	15	65	
Leptospirosis								
Rocky mountain spotted fever								

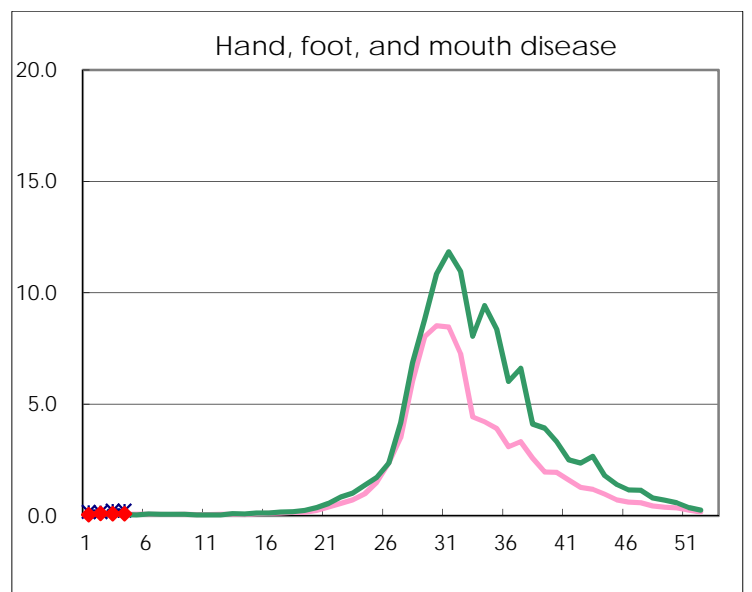
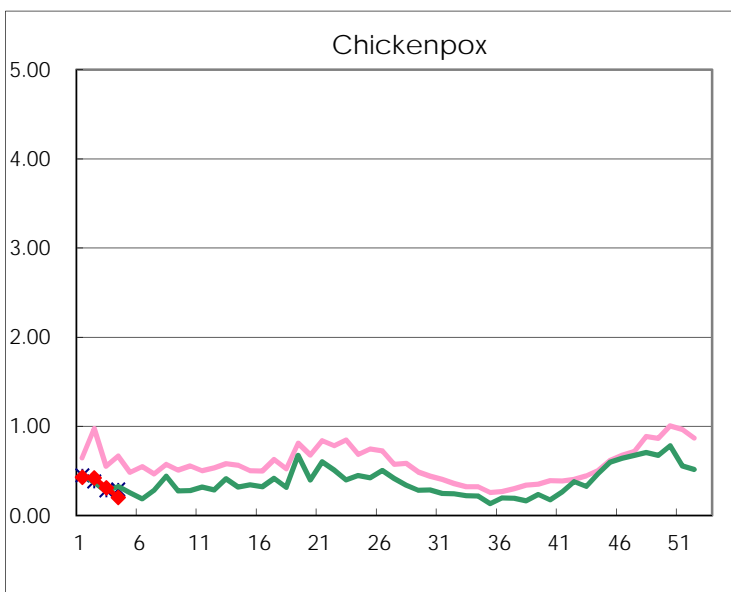
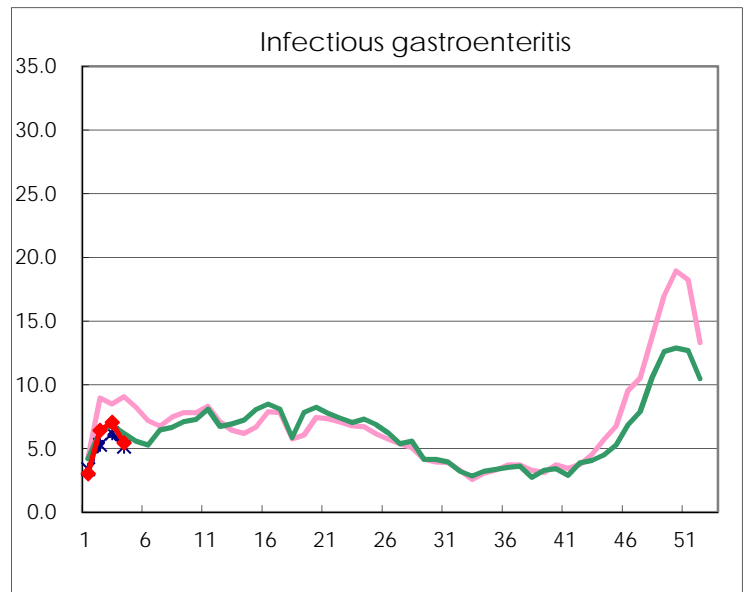
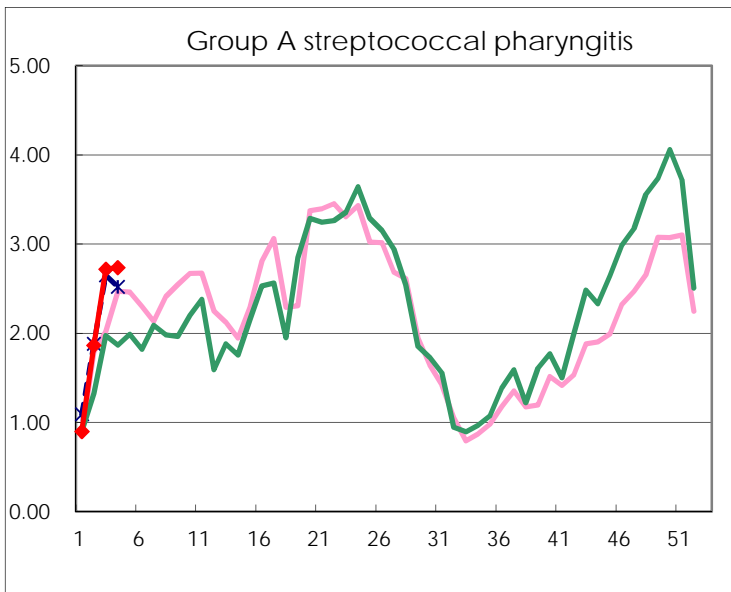
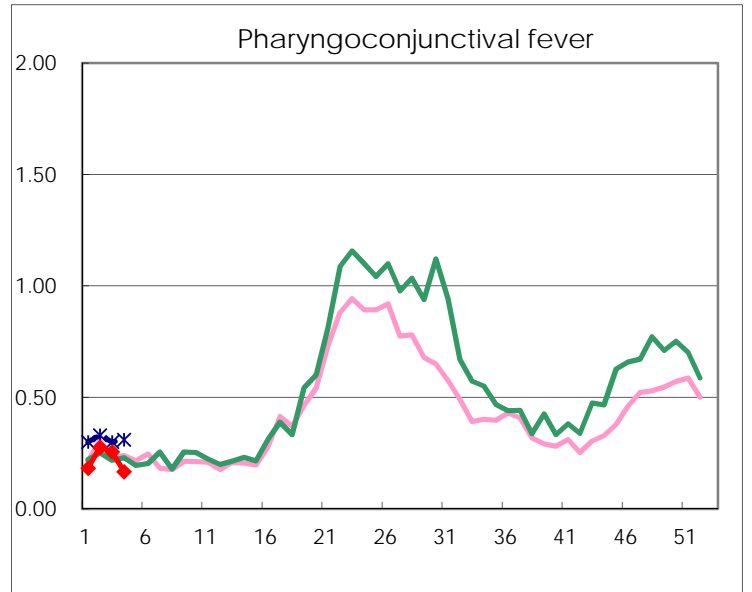
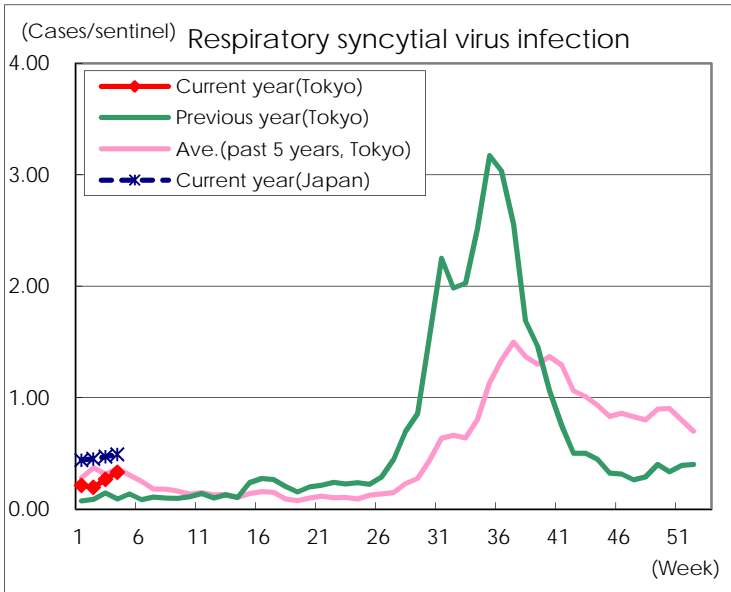
Category	Diseases	Tokyo					Japan	
		1st	2nd	3rd	4th	Cum 2018	4th	Cum 2018
V	Amebiasis	1	3	3	2	9	9	43
	Viral hepatitis(excluding hepatitis A and E)				1	1		10
	CRE infection	3	1	6	2	12	24	113
	Acute encephalitis(excluding JE and WNE)	2	4	3	2	11	13	98
	Cryptosporidiosis							
	Creutzfeldt-Jakob disease		1	1		2	2	14
	Severe invasive streptococcal infections(TSLs)	3	2	3	1	9	19	75
	Acquired immunodeficiency syndrome (AIDS)	1	2	6	10	19	15	64
	Giardiasis		1		2	3	2	6
	Invasive <i>Haemophilus influenzae</i> disease	1			1	2	9	40
	Invasive meningococcal disease			1		1		4
	Invasive pneumococcal disease	7	16	15	15	53	48	366
	Varicella (limited to hospitalized case)	1				1	4	27
	Congenital rubella syndrome							
	Syphilis	7	25	40	34	106	73	342
	Disseminated cryptococcosis		1		1	2	2	9
	Tetanus						1	1
	Vancomycin-resistant <i>S. aureus</i> infection							
	Vancomycin-resistant Enterococcus infection							1
	Pertussis		3	5	7	15	40	151
Rubella						1	3	
Measles							1	
MDRA infection							1	

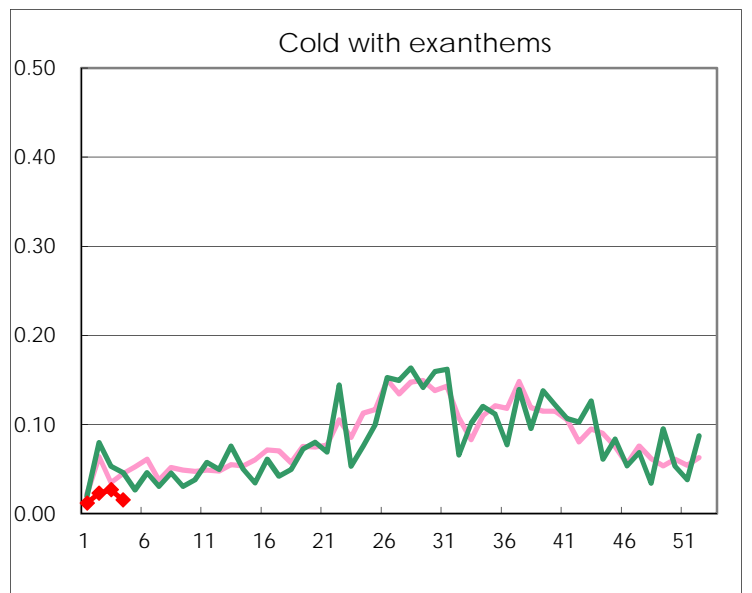
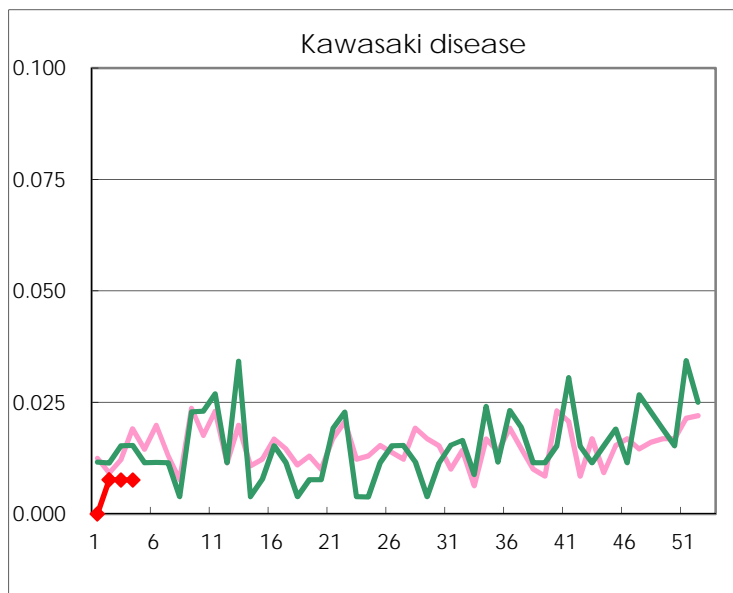
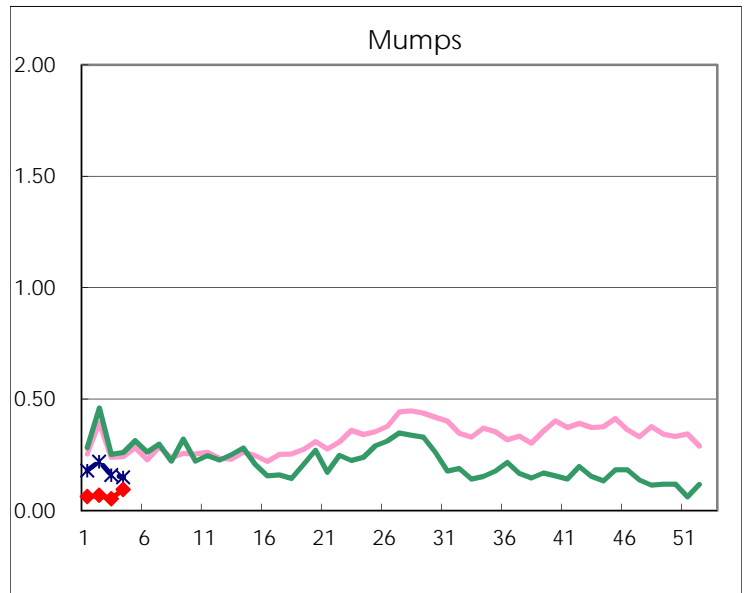
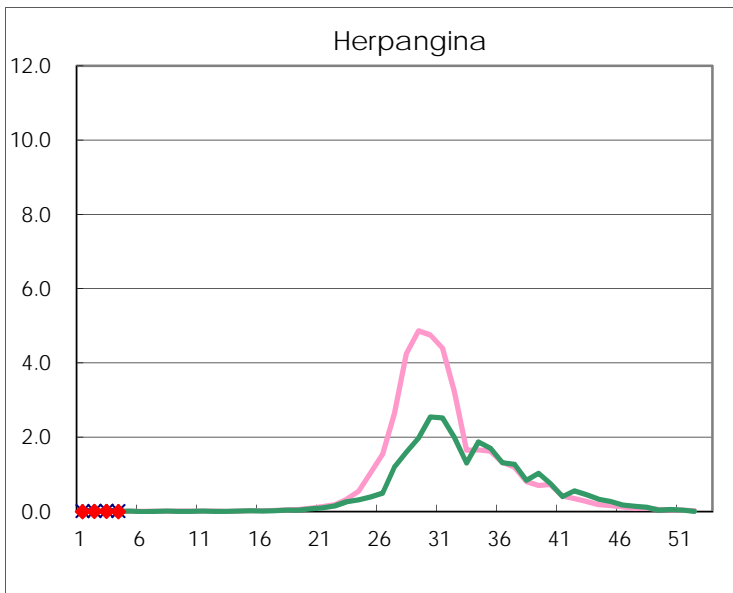
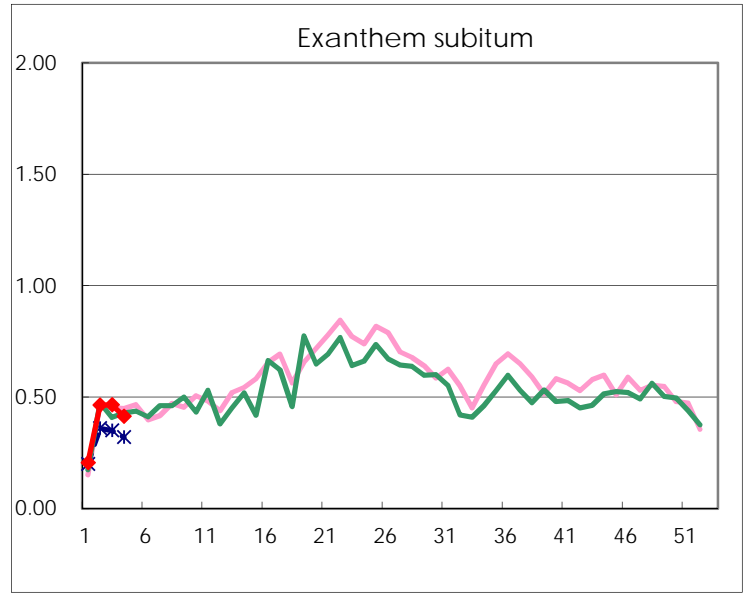
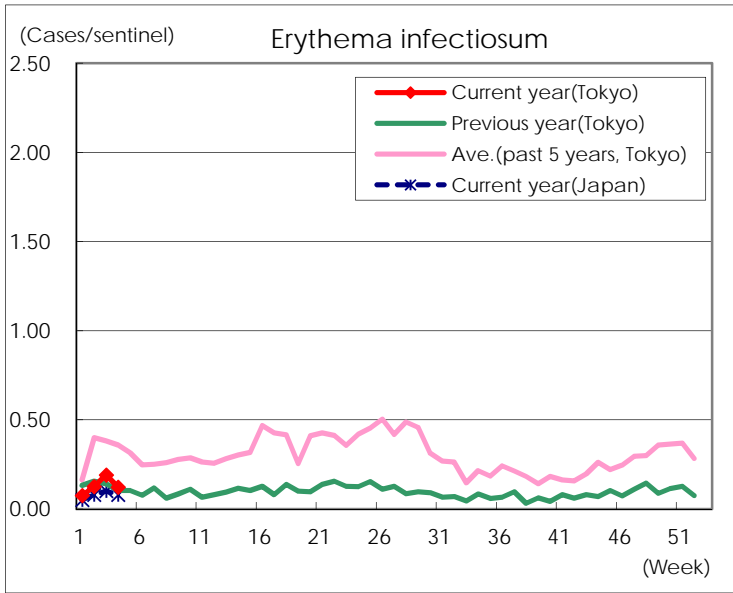
Number of patients with the diseases to be reported  
by the designated clinics and hospitals

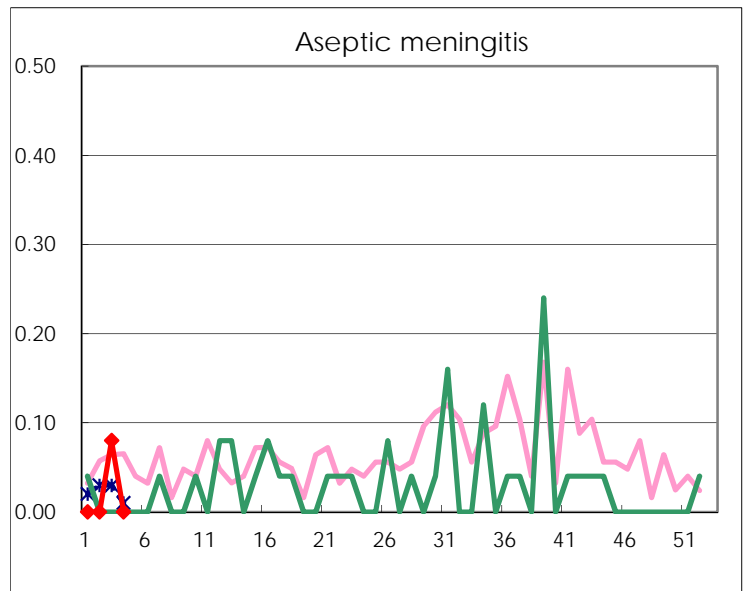
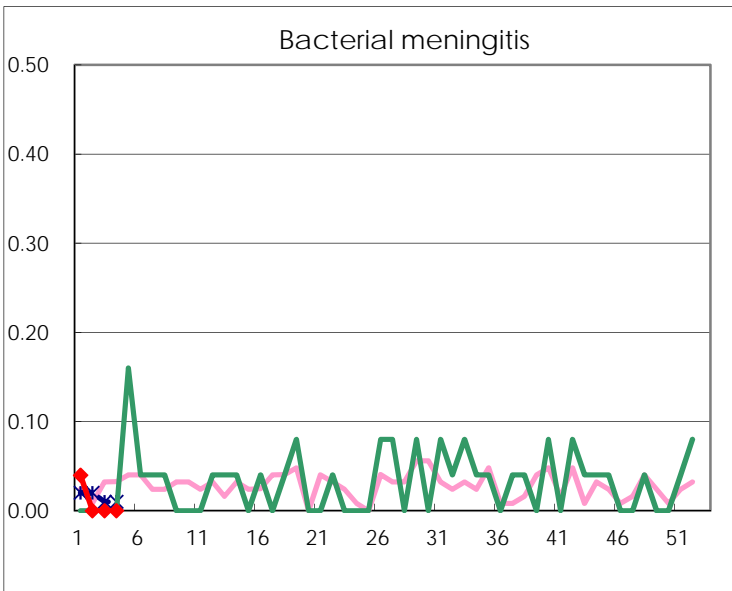
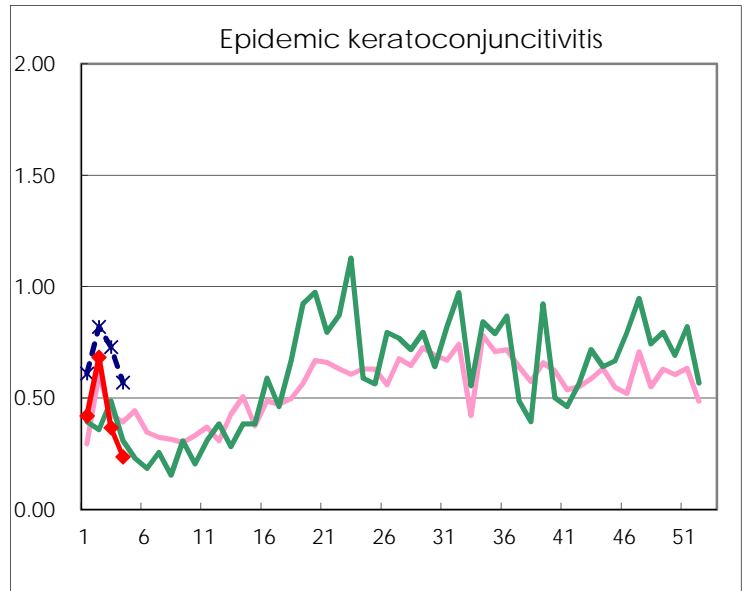
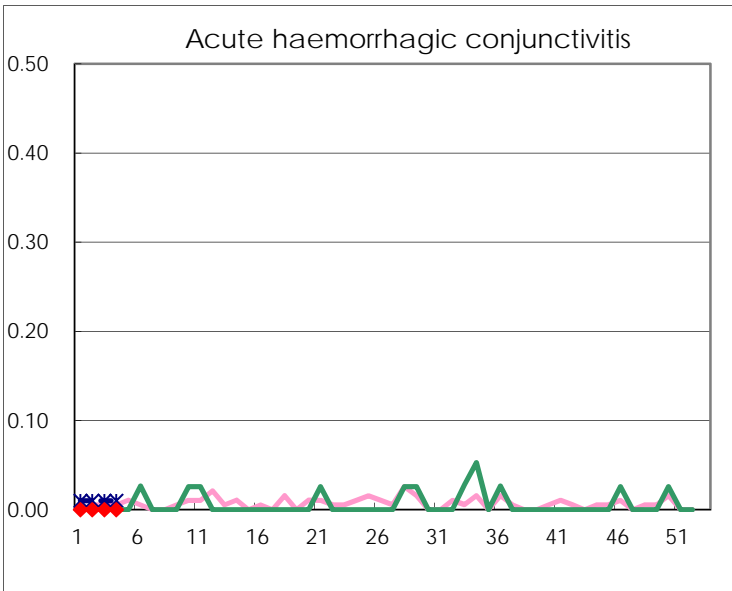
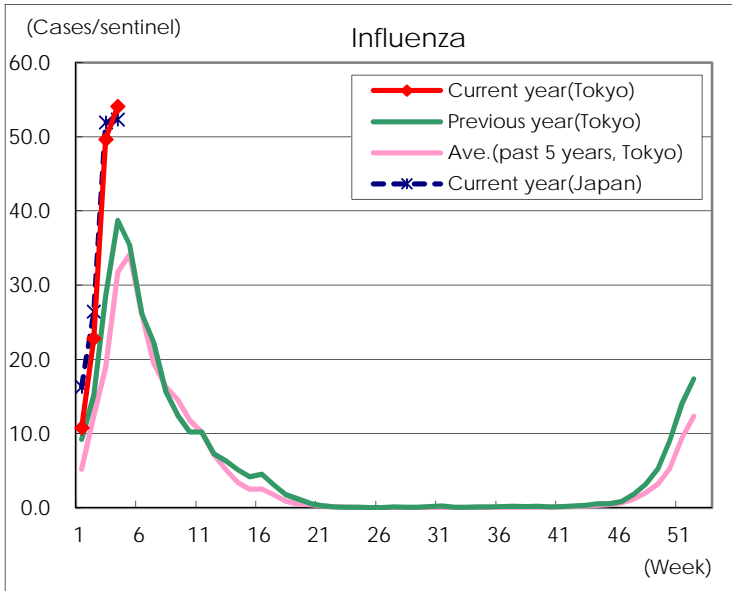
Diseases	Tokyo				
	1st	2nd	3rd	4th	/sentinel
Respiratory syncytial virus infection	54	51	70	87	0.33
Pharyngoconjunctival fever	46	72	67	44	0.17
Group A streptococcal pharyngitis	227	486	712	720	2.74
Infectious gastroenteritis	763	1,676	1,844	1,426	5.42
Chickenpox	108	110	81	53	0.20
Hand, foot, and mouth disease	10	26	22	23	0.09
Erythema infectiosum	19	33	50	32	0.12
Exanthem subitum	52	121	122	109	0.41
Herpangina		3	2	1	
Mumps	16	18	14	25	0.10
Kawasaki disease		2	2	2	0.01
Cold with exanthsms	3	6	7	4	0.02
Influenza	4,357	9,456	20,612	22,504	54.10
Acute hemorrhagic conjunctivitis					
Epidemic keratoconjunctivitis	16	26	14	9	0.24
Bacterial meningitis	1				
Aseptic meningitis			2		
Mycoplasma pneumonia	1		2	3	0.12
Chlamydial pneumonia (excluding psittacosis)	1	2		1	0.04
Infectious gastroenteritis (only by Rotavirus)	1	3	1		
Influenza-Associated Hospitalizations	92	104	140	110	4.40

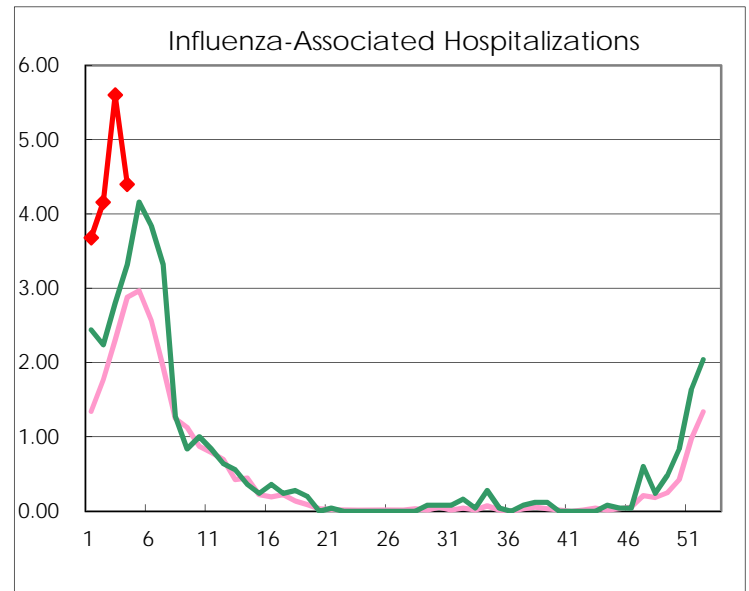
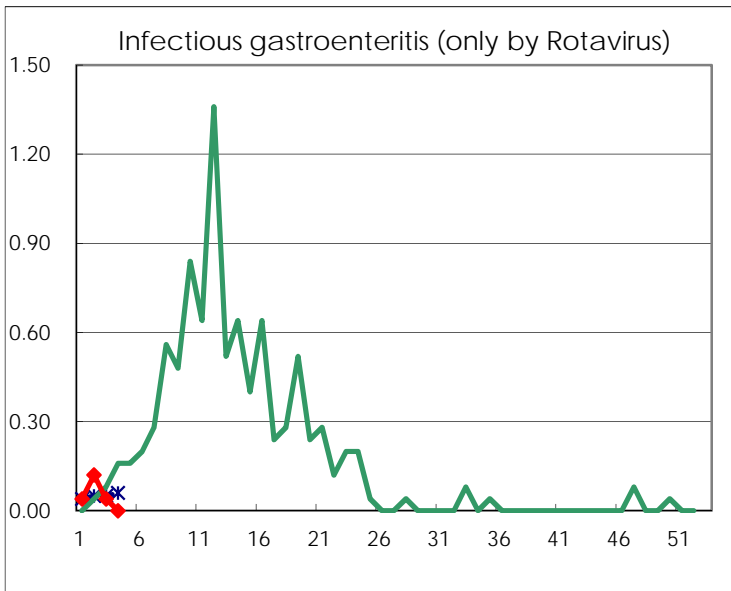
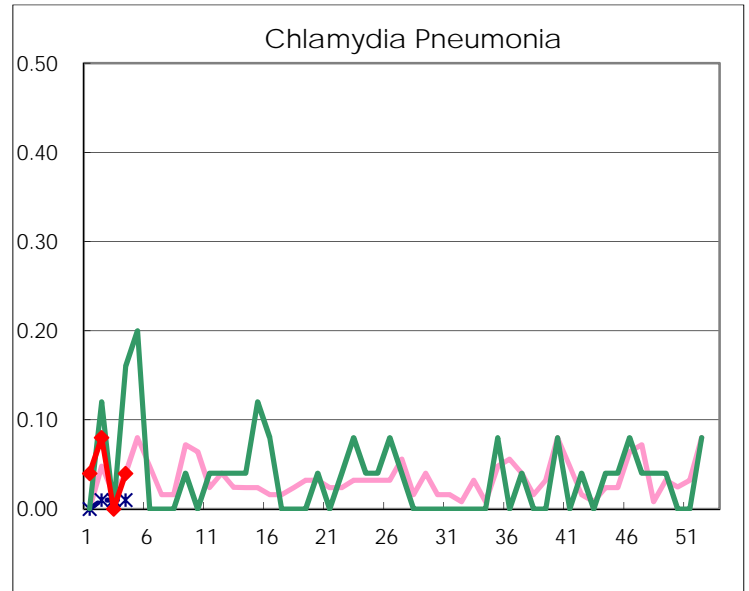
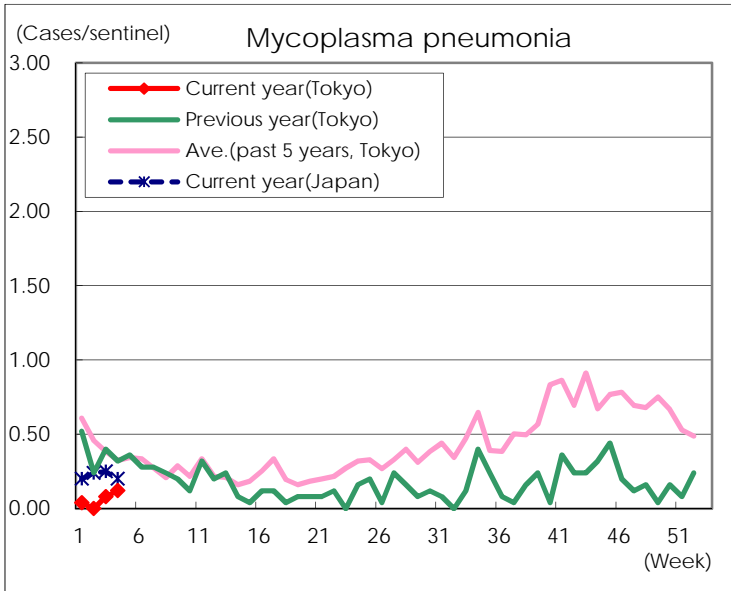
( Blank means 0. )

# Disease Trend Graph (weekly reported cases per sentinel in comparison)









Number of sentinel facilities for weekly reporting		
Types of sentinels	Number of sentinels	Sentinels having reported
Pediatric	264	263
Influenza	419	416
Ophthalmic	39	38
Specially-designated	25	25