

**22 February 2018 / Number 7**

## Surveillance System in Tokyo, Japan

The infectious diseases which all physicians must report

All physicians must report to health centers the incidence of the diseases which are shown at page one. Health centers electronically report the individual cases to Tokyo Metropolitan Infectious Disease Surveillance Center.

The infectious diseases required to be reported by the sentinels

The numbers of patients who visit the sentinel clinics or hospitals during a week are reported to health centers in Tokyo. And they electronically report the numbers to Tokyo Metropolitan Infectious Disease Surveillance Center. We have about 500 sentinel clinics and hospitals in Tokyo.

Tokyo Metropolitan Institute of Public Health

TEL:81-3-3363-3213 FAX:81-3-5332-7365

e-mail:[www@tokyo-eiken.go.jp](mailto:www@tokyo-eiken.go.jp)

URL:[idsc.tokyo-eiken.go.jp/](http://idsc.tokyo-eiken.go.jp/)

---

Number of patients with the diseases which all physicians must report

Category	Diseases	Tokyo				Cum 2018	Japan	
		4th	5th	6th	7th		7th	Cum 2018
I	Ebola hemorrhagic fever							
	Crimean-Congo hemorrhagic fever							
	Smallpox							
	South American hemorrhagic fever							
	Plague							
	Marburg disease							
	Lassa fever							
II	Acute poliomyelitis							
	Tuberculosis	71	72	52	30	347	270	2,405
	Diphtheria							
	Severe Acute Respiratory Syndrome(SARS)							
	Middle East Respiratory Syndrome (MERS)							
	Avian influenza H5N1							
	Avian influenza H7N9							
III	Cholera							2
	Shigellosis		2	2	2	9	9	28
	Enterohemorrhagic Escherichia coli infection		1	2	1	7	12	71
	Typhoid fever	1		1		2	1	10
	Paratyphoid fever			1	1	2	1	3
IV	Hepatitis E	1	1		3	8	5	37
	West Nile fever							
	Hepatitis A	2	1	8	3	20	10	49
	Echinococcosis							
	Yellow fever							
	Psittacosis							
	Omsk hemorrhagic fever							
	Relapsing fever							
	Kyasanur forest disease							
	Q fever							1
	Rabies							
	Coccidioidomycosis							
	Monkeypox							
	Zika virus infection							
	Severe Fever with Thrombocytopenia Syndrome							
	Hemorrhagic fever with renal syndrome							
	Western equine encephalitis							
	Tick-borne encephalitis							
	Anthrax							
	Chikungunya fever							
	Scrub typhus(Tsutsugamushi disease)			2		3		35
	Dengue fever	1		1	1	8	1	12
	Eastern equine encephalitis							
	Avian influenza (excluding H5N1 and H7N9)							
	Nipah virus infection							
	Japanese spotted fever							
	Japanese encephalitis							
	Hantavirus pulmonary syndrome							
	Herpes B virus infection							
	Glanders							
	Brucellosis							
	Venezuelan equine encephalitis							
Hendra virus infection								
Epidemic typhus								
Botulism					1		1	
Malaria						1	5	
Tularemia								
Lyme disease								
Lyssavirus infection(excluding rabies)								
Rift valley fever								
Melioidosis								
Legionellosis	2	3	3	3	13	11	142	
Leptospirosis								
Rocky mountain spotted fever								

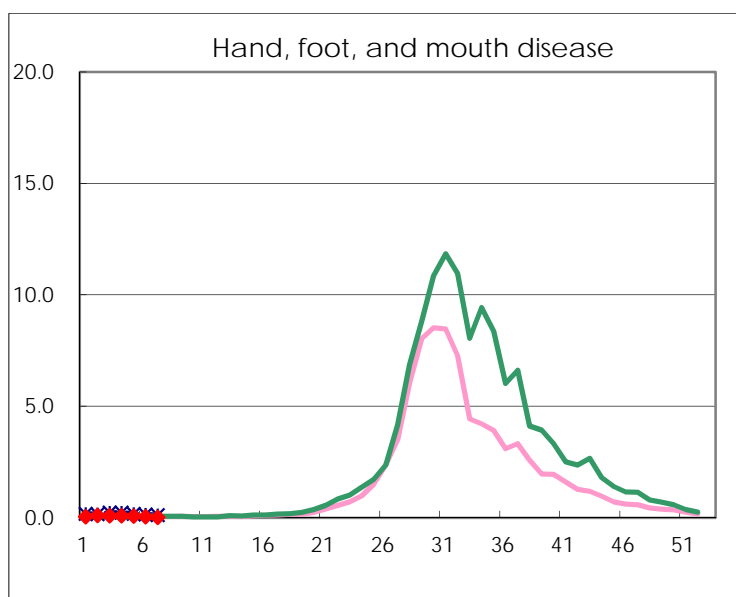
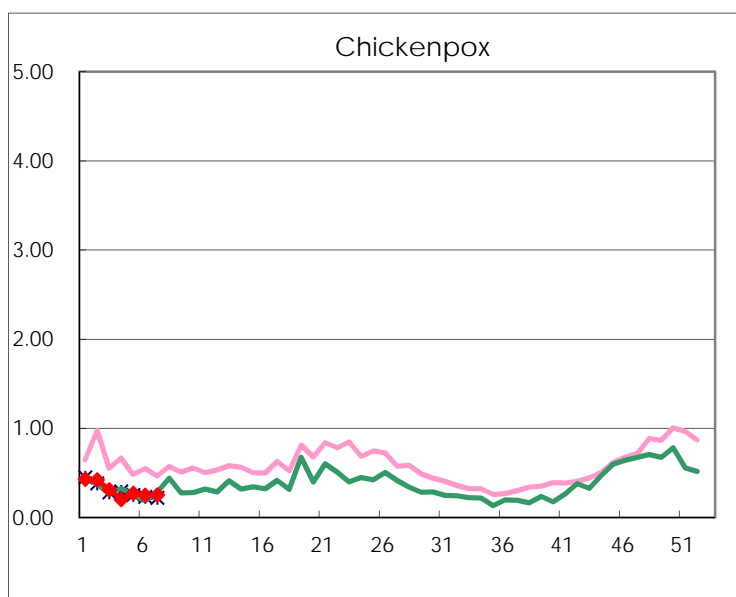
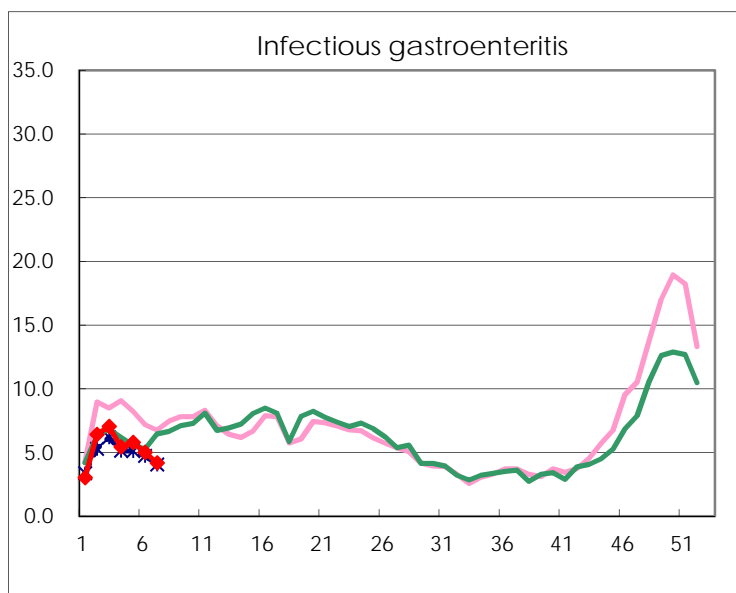
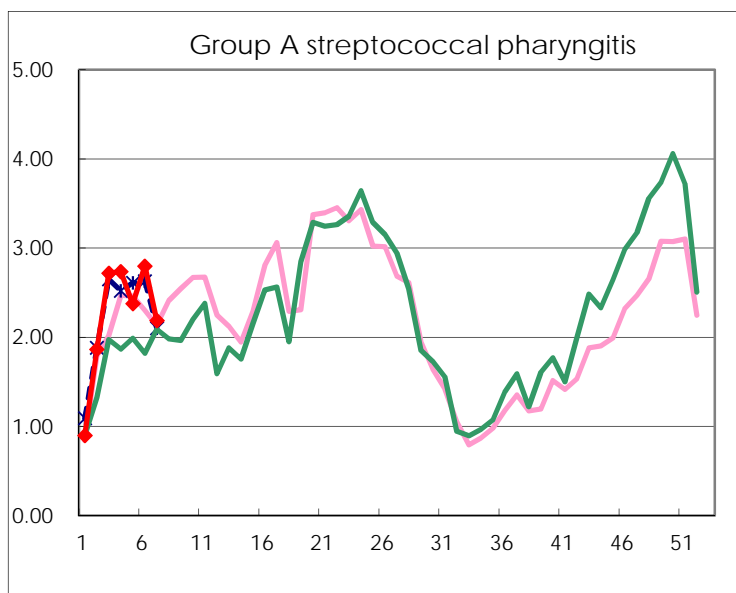
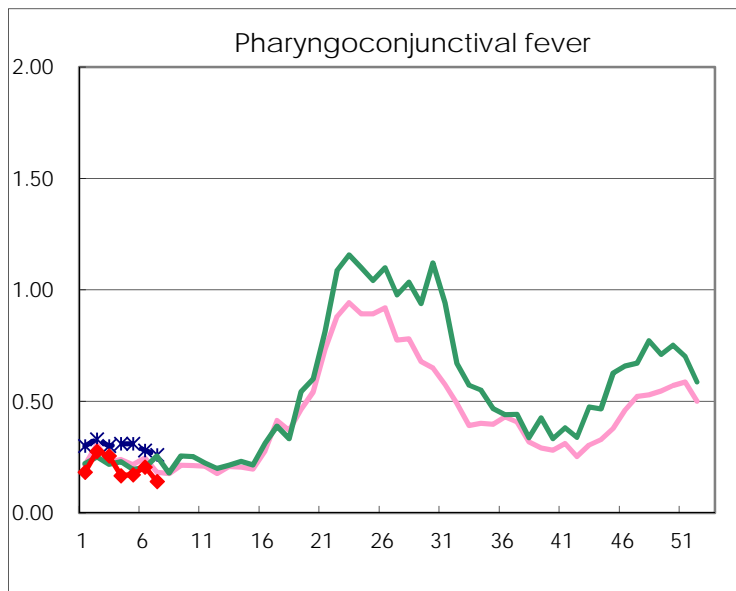
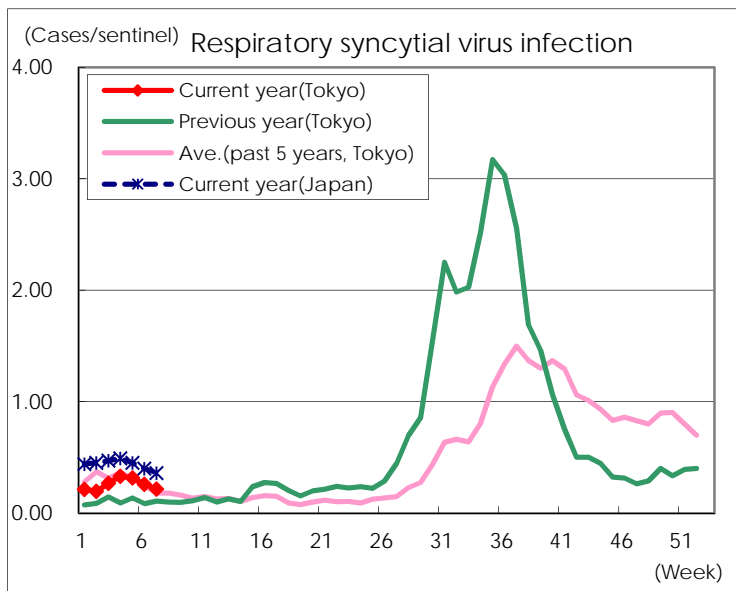
Category	Diseases	Tokyo					Japan	
		4th	5th	6th	7th	Cum 2018	7th	Cum 2018
V	Amebiasis	2	4		5	18	8	89
	Viral hepatitis(excluding hepatitis A and E)	1		2		3	1	24
	CRE infection	2		2	3	17	10	190
	Acute encephalitis(excluding JE and WNE)	3	5	1	1	19	9	172
	Cryptosporidiosis						2	2
	Creutzfeldt-Jakob disease			1		3	3	25
	Severe invasive streptococcal infections(TSLS)	1	4	5		18	10	125
	Acquired immunodeficiency syndrome (AIDS)	10	8	13	4	44	11	141
	Giardiasis	2				3	2	11
	Invasive <i>Haemophilus influenzae</i> disease	1		1		3	2	63
	Invasive meningococcal disease					1		5
	Invasive pneumococcal disease	15	9	14	7	83	48	608
	Varicella (limited to hospitalized case)		2	1		4	4	44
	Congenital rubella syndrome							
	Syphilis	35	39	27	22	195	61	665
	Disseminated cryptococcosis	1		2		4		15
	Tetanus						1	5
	Vancomycin-resistant <i>S. aureus</i> infection							
	Vancomycin-resistant Enterococcus infection						1	3
	Pertussis	13	8	9	2	40	27	351
Rubella						2	5	
Measles						1	3	
MDRA infection							3	

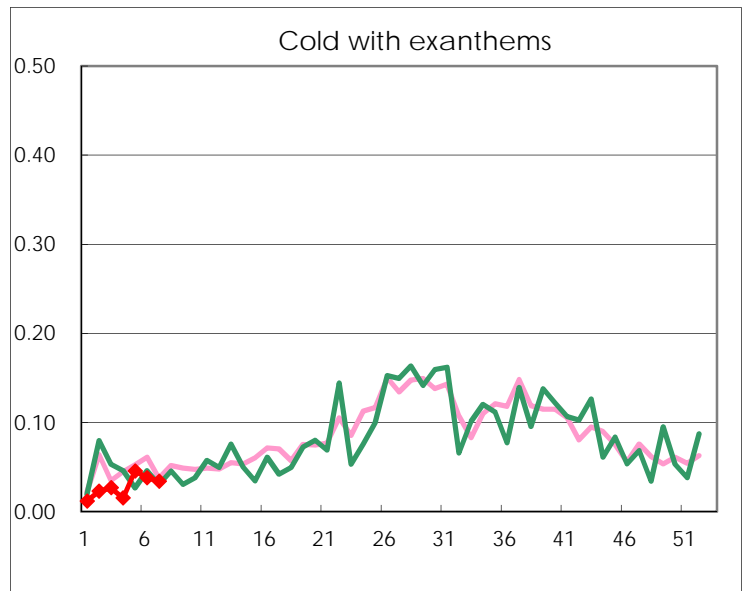
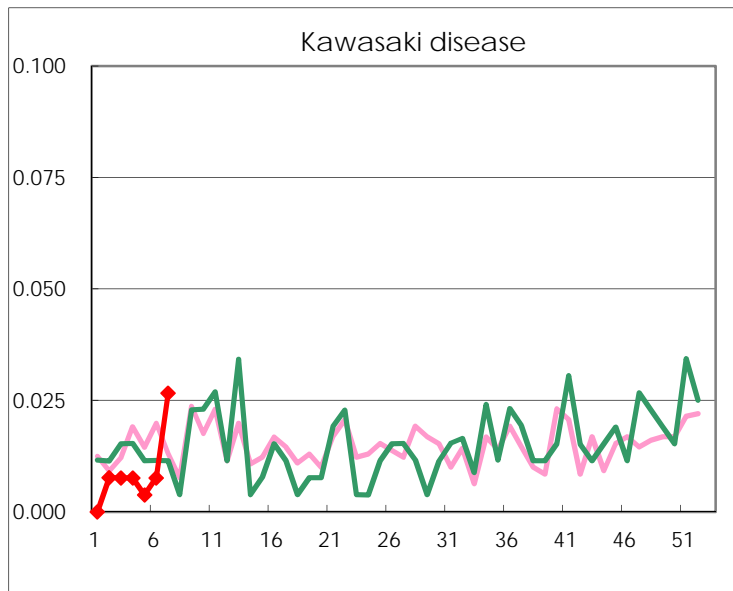
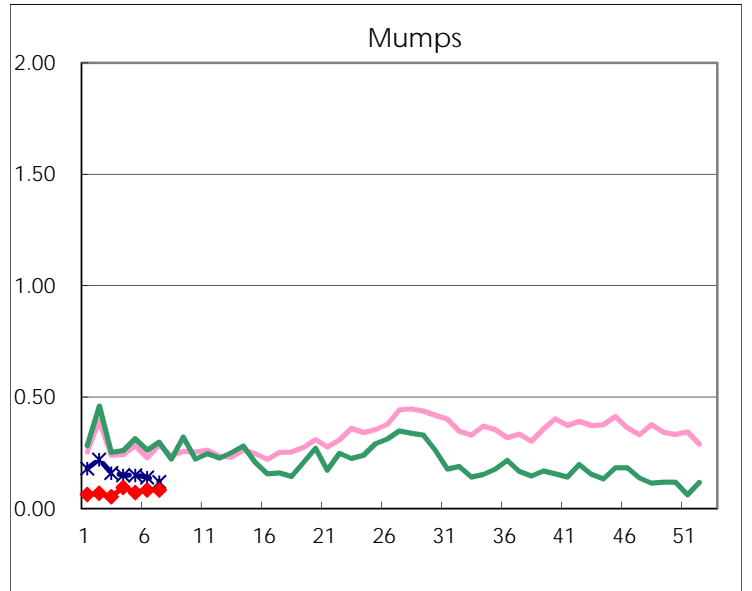
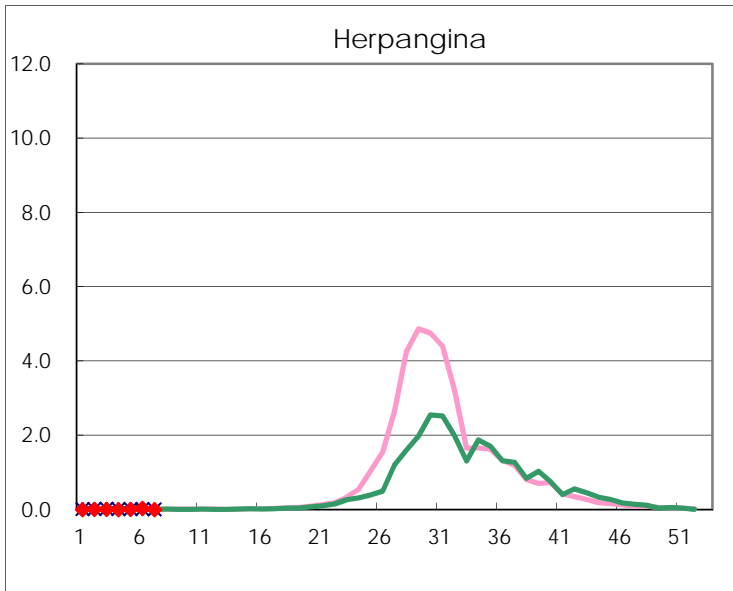
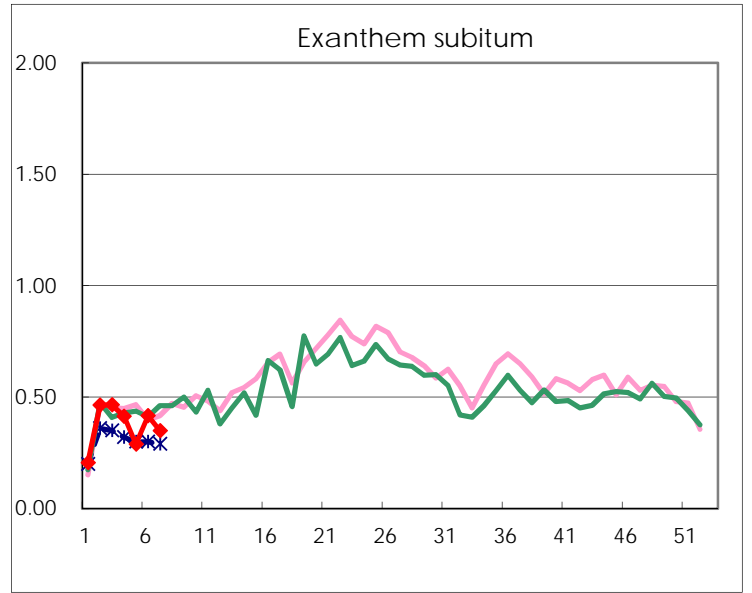
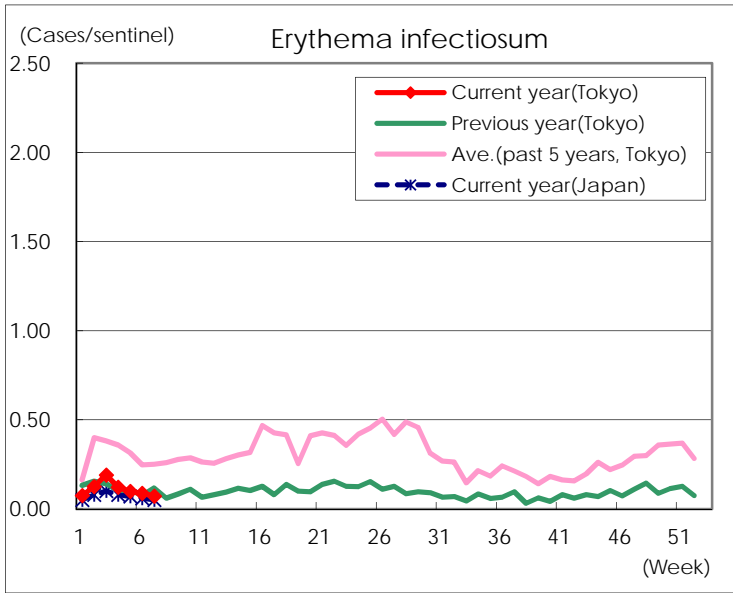
Number of patients with the diseases to be reported  
by the designated clinics and hospitals

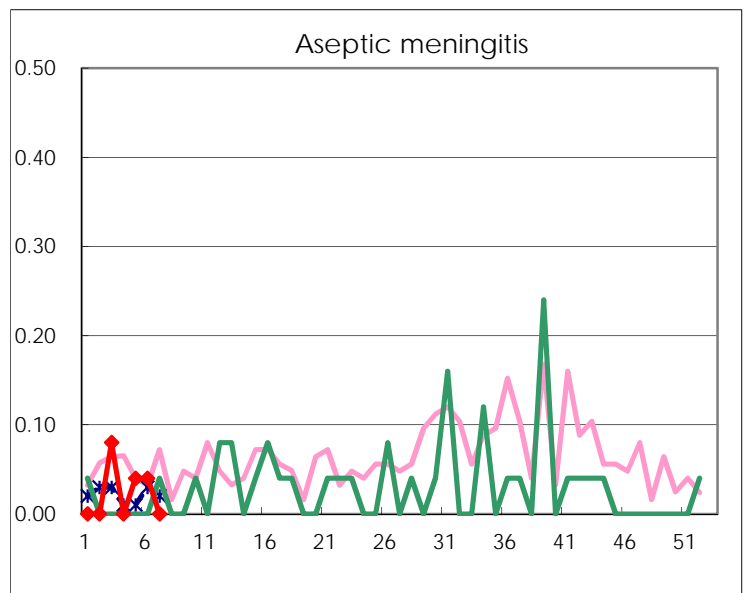
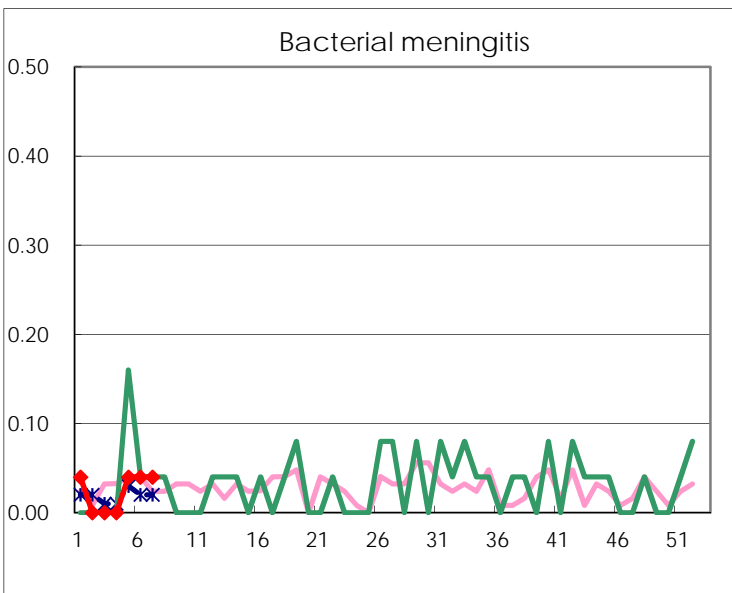
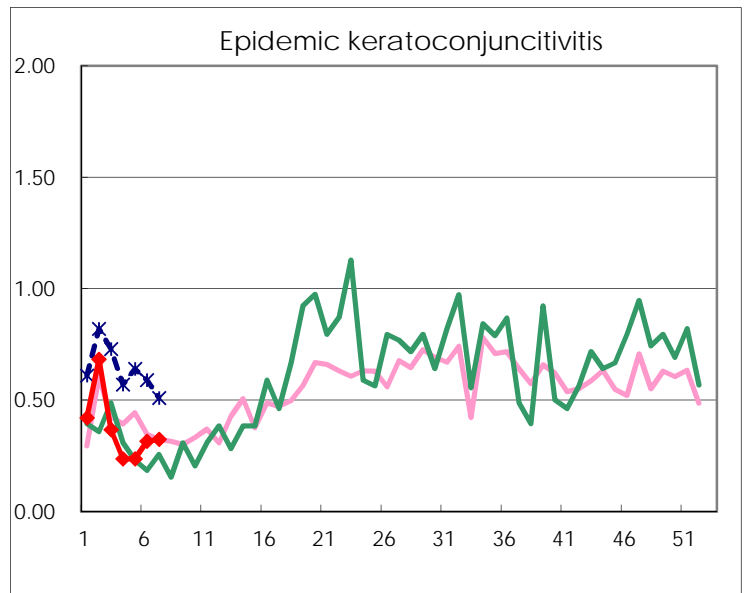
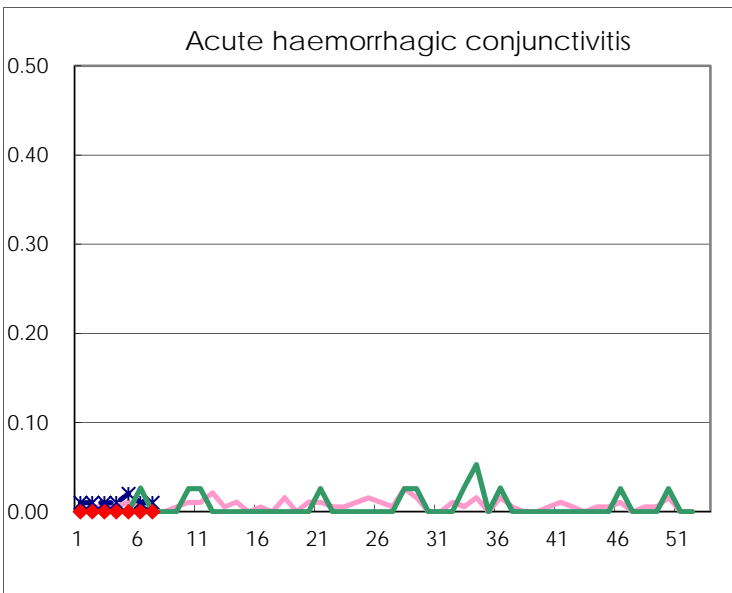
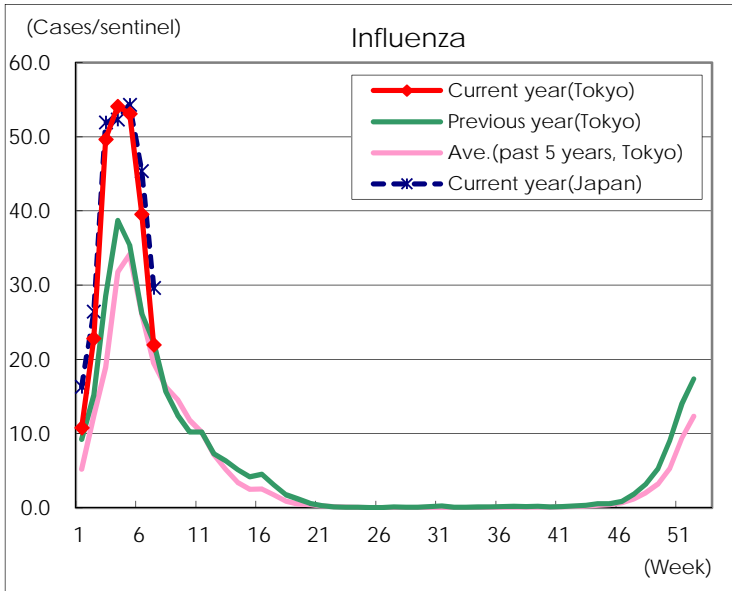
Diseases	Tokyo				
	4th	5th	6th	7th	/sentinel
Respiratory syncytial virus infection	87	83	68	57	0.22
Pharyngoconjunctival fever	44	45	54	37	0.14
Group A streptococcal pharyngitis	720	625	733	575	2.19
Infectious gastroenteritis	1,426	1,518	1,313	1,096	4.17
Chickenpox	53	71	65	66	0.25
Hand, foot, and mouth disease	23	20	13	4	0.02
Erythema infectiosum	32	26	23	19	0.07
Exanthem subitum	109	76	109	92	0.35
Herpangina	1	3	9		
Mumps	25	19	22	22	0.08
Kawasaki disease	2	1	2	7	0.03
Cold with exanthems	4	12	10	9	0.03
Influenza	22,504	22,104	16,376	9,137	21.96
Acute hemorrhagic conjunctivitis					
Epidemic keratoconjunctivitis	9	9	12	12	0.32
Bacterial meningitis		1	1	1	0.04
Aseptic meningitis		1	1		
Mycoplasma pneumonia	3			1	0.04
Chlamydial pneumonia (excluding psittacosis)	1	1		1	0.04
Infectious gastroenteritis (only by Rotavirus)		3	4	1	0.04
Influenza-Associated Hospitalizations	110	123	122	94	3.76

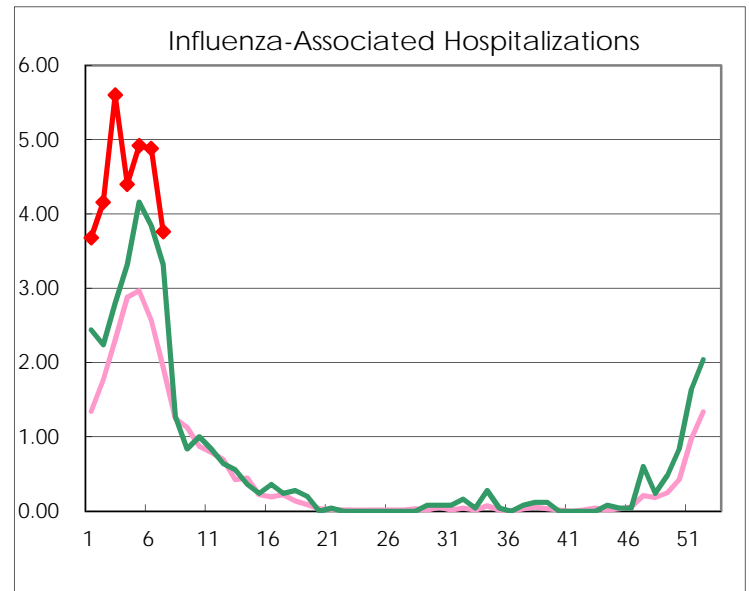
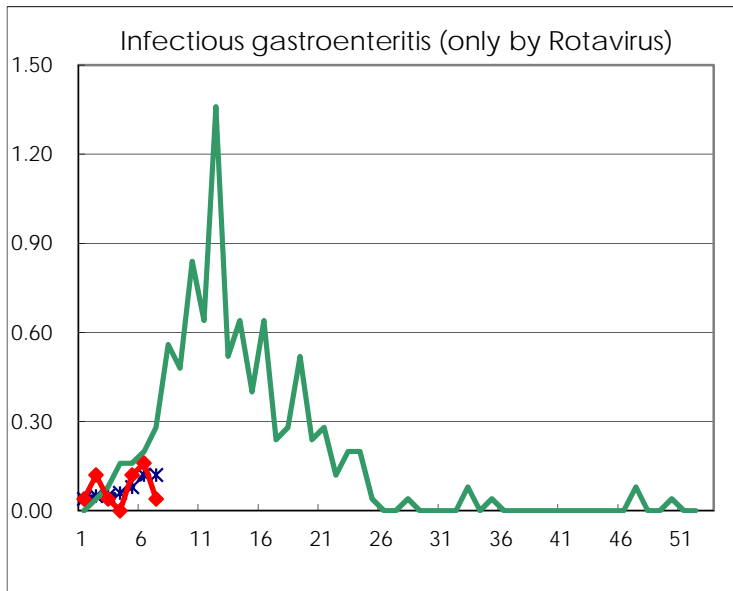
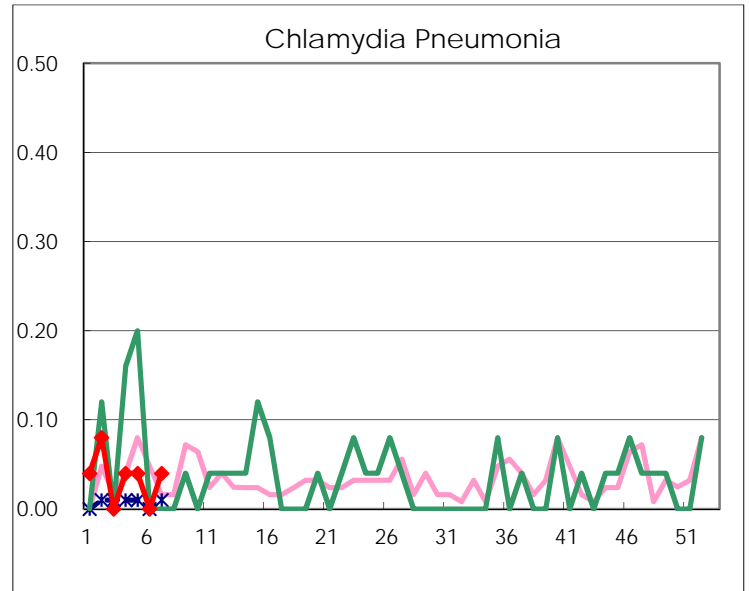
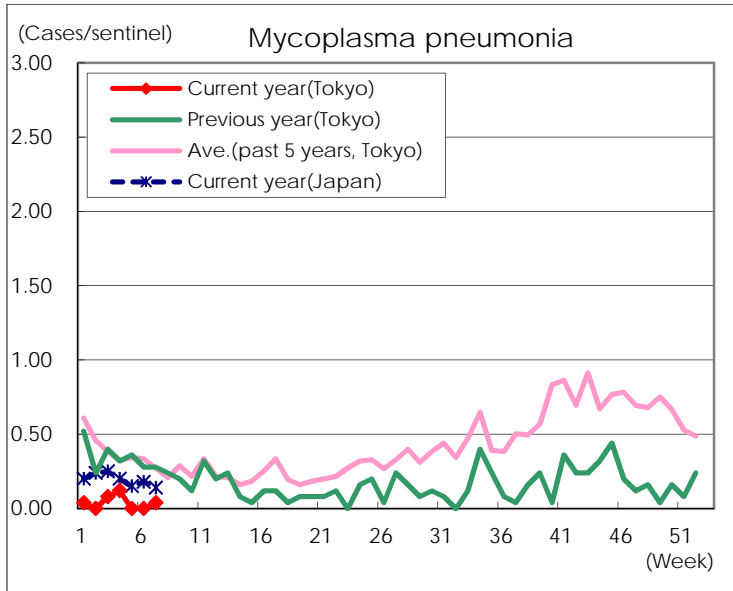
( Blank means 0. )

# Disease Trend Graph (weekly reported cases per sentinel in comparison)









Number of sentinel facilities for weekly reporting		
Types of sentinels	Number of sentinels	Sentinels having reported
Pediatric	264	263
Influenza	419	416
Ophthalmic	39	37
Specially-designated	25	25