

**12 April 2018 / Number 14**

## Surveillance System in Tokyo, Japan

The infectious diseases which all physicians must report

All physicians must report to health centers the incidence of the diseases which are shown at page one. Health centers electronically report the individual cases to Tokyo Metropolitan Infectious Disease Surveillance Center.

The infectious diseases required to be reported by the sentinels

The numbers of patients who visit the sentinel clinics or hospitals during a week are reported to health centers in Tokyo. And they electronically report the numbers to Tokyo Metropolitan Infectious Disease Surveillance Center. We have about 500 sentinel clinics and hospitals in Tokyo.

Tokyo Metropolitan Institute of Public Health

TEL:81-3-3363-3213 FAX:81-3-5332-7365

e-mail:[www@tokyo-eiken.go.jp](mailto:www@tokyo-eiken.go.jp)

URL:[idsc.tokyo-eiken.go.jp/](http://idsc.tokyo-eiken.go.jp/)

---

Number of patients with the diseases which all physicians must report

Category	Diseases	Tokyo					Japan	
		11th	12th	13th	14th	Cum 2018	14th	Cum 2018
I	Ebola hemorrhagic fever							
	Crimean-Congo hemorrhagic fever							
	Smallpox							
	South American hemorrhagic fever							
	Plague							
	Marburg disease							
	Lassa fever							
II	Acute poliomyelitis							
	Tuberculosis	81	55	65	63	844	333	5,323
	Diphtheria							
	Severe Acute Respiratory Syndrome(SARS)							
	Middle East Respiratory Syndrome (MERS)							
	Avian influenza H5N1							
	Avian influenza H7N9							
III	Cholera							2
	Shigellosis	1		2		15	4	53
	Enterohemorrhagic Escherichia coli infection	1		2	4	17	21	172
	Typhoid fever	1				3	1	15
	Paratyphoid fever					3		5
IV	Hepatitis E	2	1		3	20	9	87
	West Nile fever							
	Hepatitis A	13	10	6	8	79	12	158
	Echinococcosis							1
	Yellow fever							
	Psittacosis							1
	Omsk hemorrhagic fever							
	Relapsing fever							
	Kyasanur forest disease							
	Q fever							1
	Rabies							
	Coccidioidomycosis							
	Monkeypox							
	Zika virus infection							
	Severe Fever with Thrombocytopenia Syndrome						2	3
	Hemorrhagic fever with renal syndrome							
	Western equine encephalitis							
	Tick-borne encephalitis							
	Anthrax							
	Chikungunya fever							
	Scrub typhus(Tsutsugamushi disease)					4	1	41
	Dengue fever	1		1	1	14		28
	Eastern equine encephalitis							
	Avian influenza (excluding H5N1 and H7N9)							
	Nipah virus infection							
	Japanese spotted fever						2	4
	Japanese encephalitis							
	Hantavirus pulmonary syndrome							
	Herpes B virus infection							
	Glanders							
	Brucellosis							1
	Venezuelan equine encephalitis							
Hendra virus infection								
Epidemic typhus								
Botulism					1		2	
Malaria		1			1		11	
Tularemia								
Lyme disease								
Lyssavirus infection(excluding rabies)								
Rift valley fever								
Melioidosis								
Legionellosis	3				21	20	272	
Leptospirosis								
Rocky mountain spotted fever								

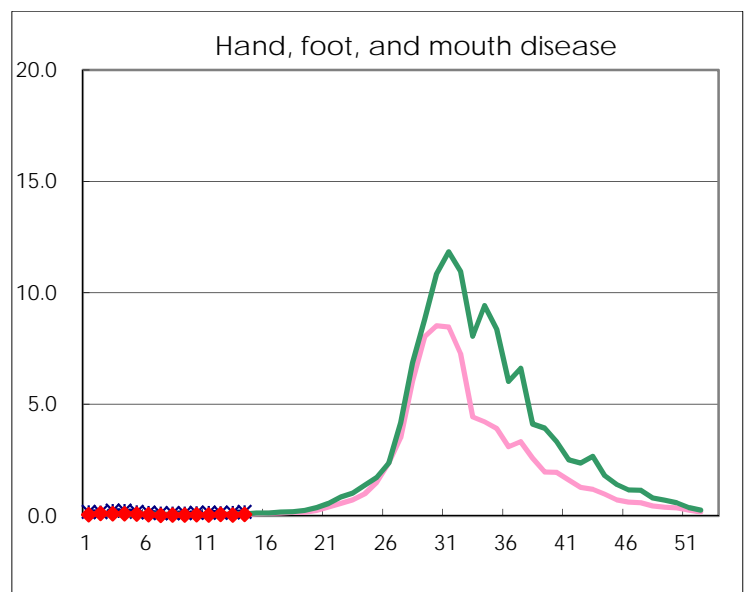
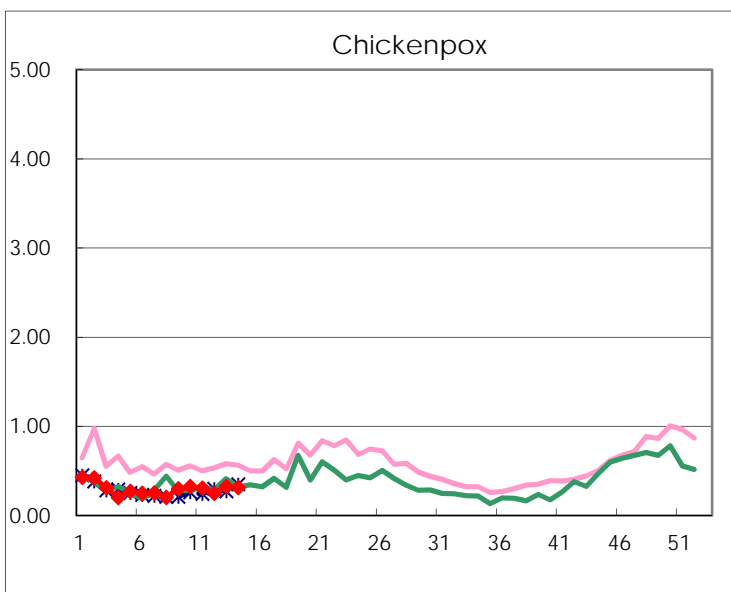
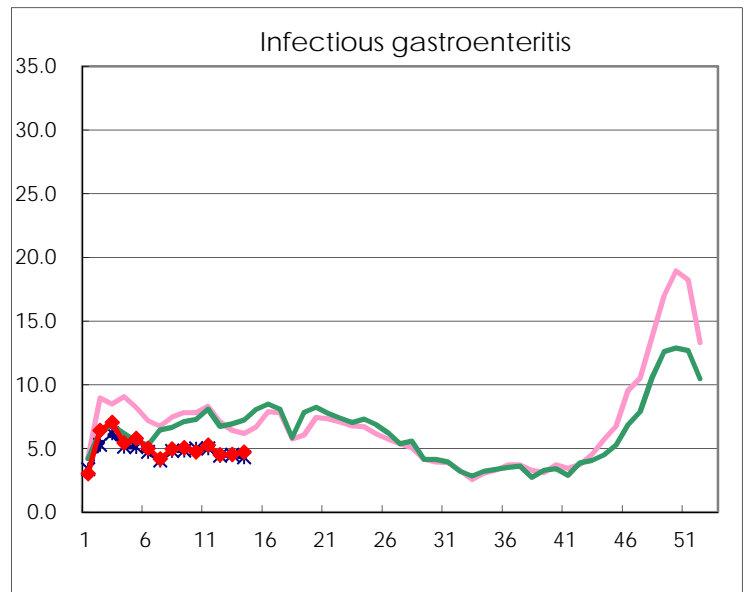
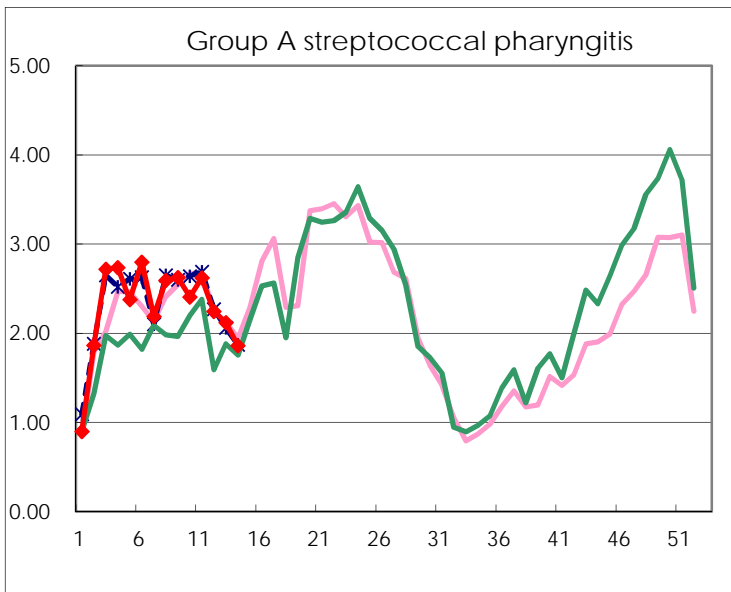
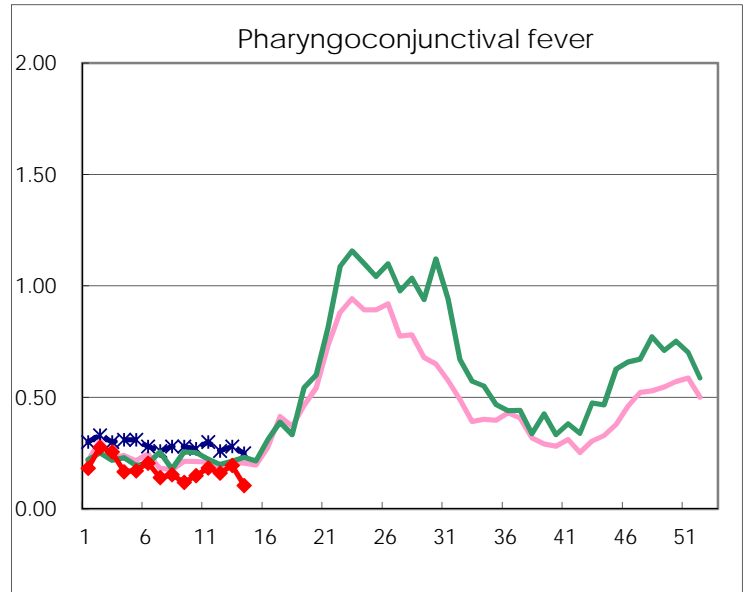
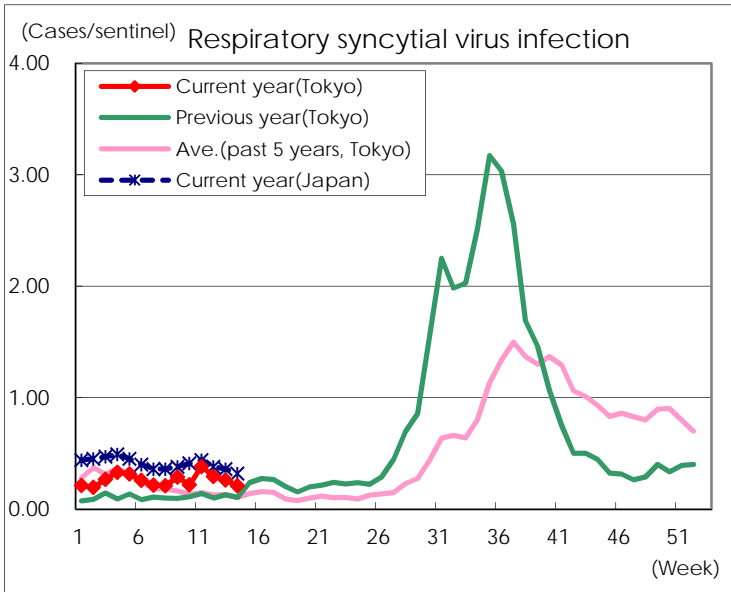
Category	Diseases	Tokyo					Japan	
		11th	12th	13th	14th	Cum 2018	14th	Cum 2018
V	Amebiasis	4	2	6	3	41	8	206
	Viral hepatitis(excluding hepatitis A and E)	3				7	2	40
	CRE infection	3	2	1	5	34	24	403
	Acute encephalitis(excluding JE and WNE)	1	3	2	1	28	7	262
	Cryptosporidiosis	1				1		6
	Creutzfeldt-Jakob disease	1				4	1	52
	Severe invasive streptococcal infections(TSLS)	3	2	2		31	8	227
	Acquired immunodeficiency syndrome (AIDS)	11	6	6	7	99	13	313
	Giardiasis		1	1	1	7	3	21
	Invasive <i>Haemophilus influenzae</i> disease		1		1	6	10	129
	Invasive meningococcal disease			1	1	4	1	14
	Invasive pneumococcal disease	4	4	10	10	135	52	1,079
	Varicella (limited to hospitalized case)	1	4			11	5	89
	Congenital rubella syndrome							
	Syphilis	32	35	23	26	404	71	1,533
	Disseminated cryptococcosis		1	1		8	4	43
	Tetanus		1			1		16
	Vancomycin-resistant <i>S. aureus</i> infection							
	Vancomycin-resistant Enterococcus infection	1				1	1	12
	Pertussis	5	5	7	12	88	62	835
Rubella						1	6	
Measles	1			1	2	16	42	
MDRA infection			1		1		4	

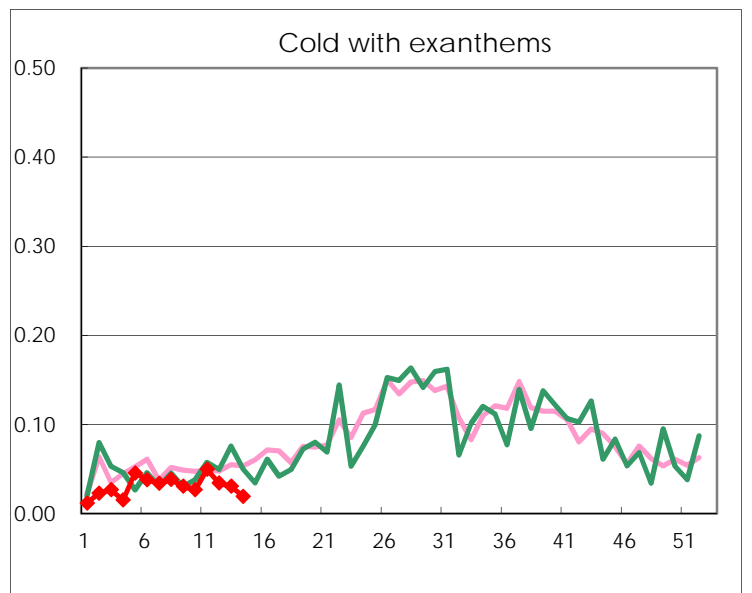
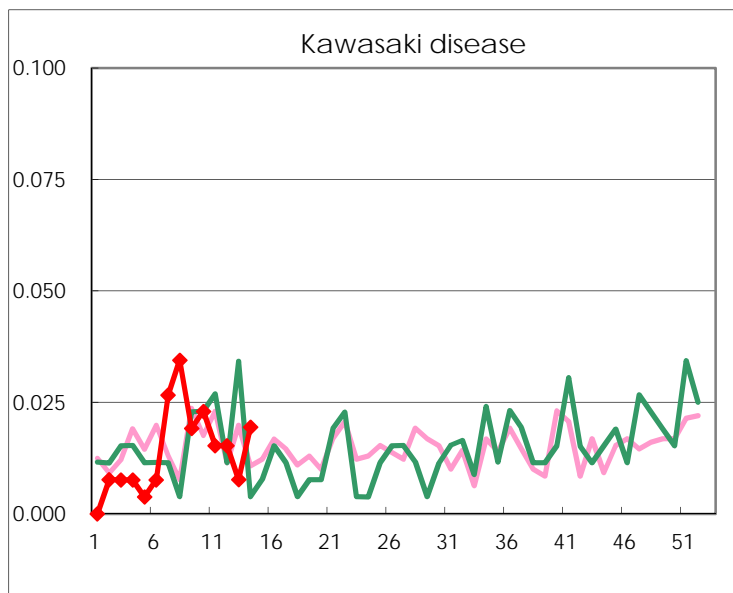
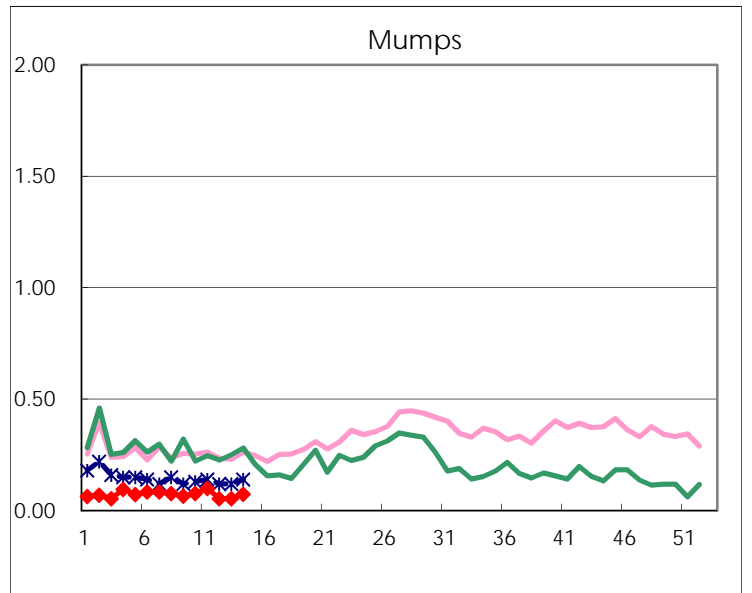
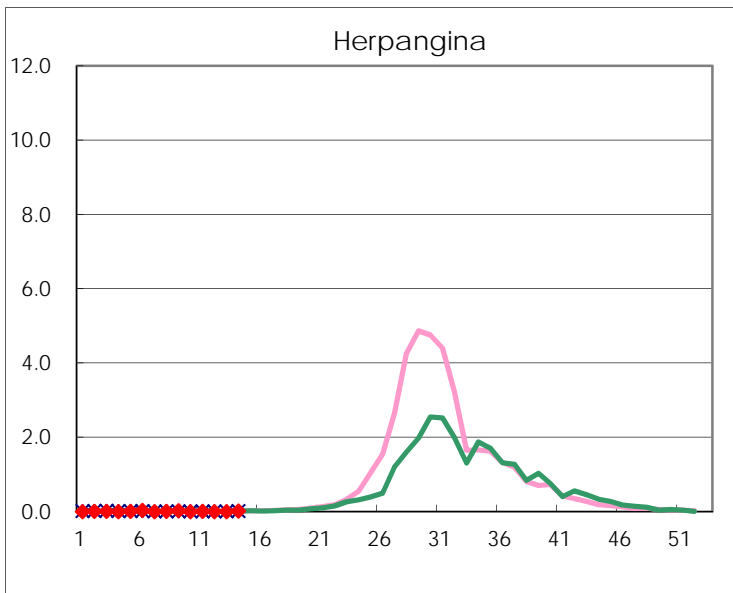
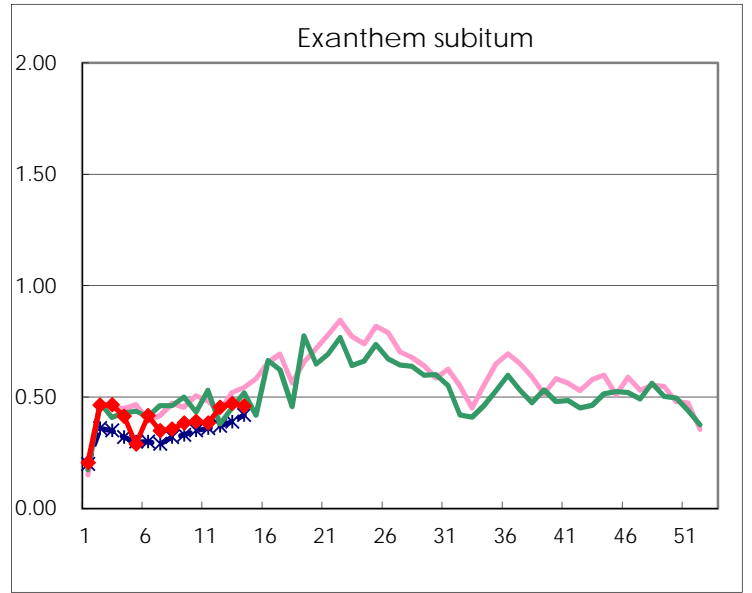
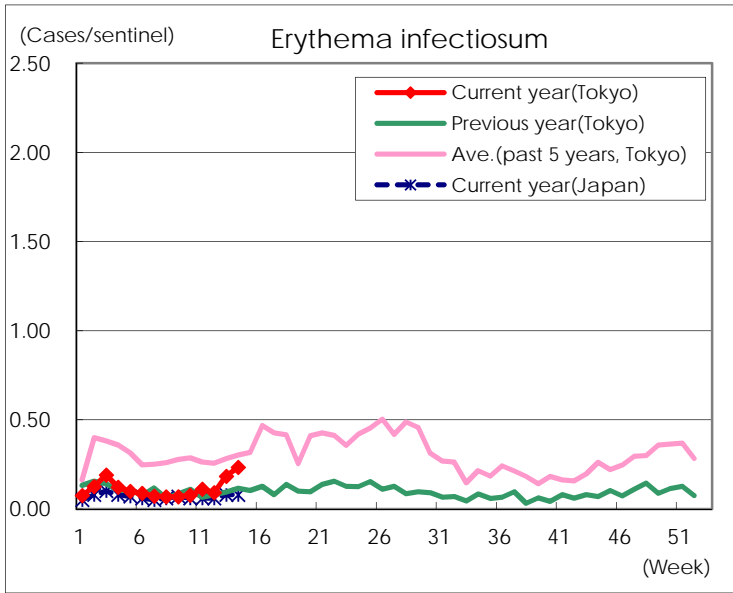
Number of patients with the diseases to be reported  
by the designated clinics and hospitals

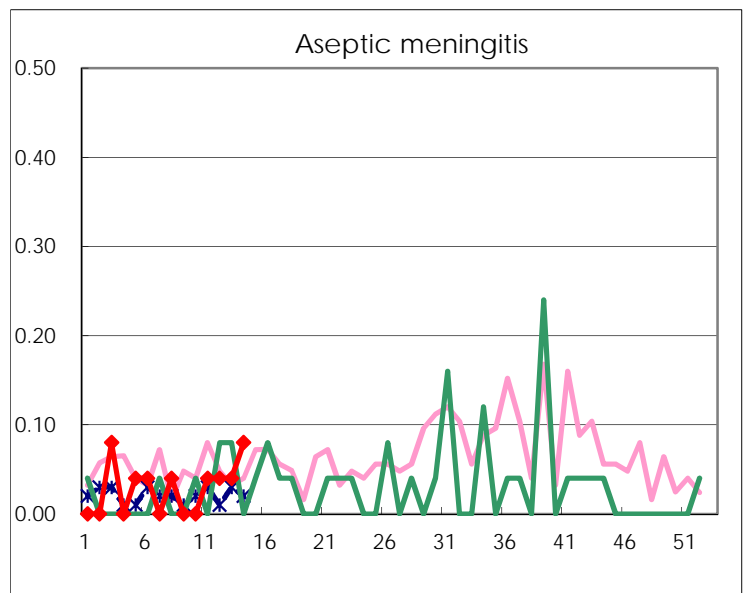
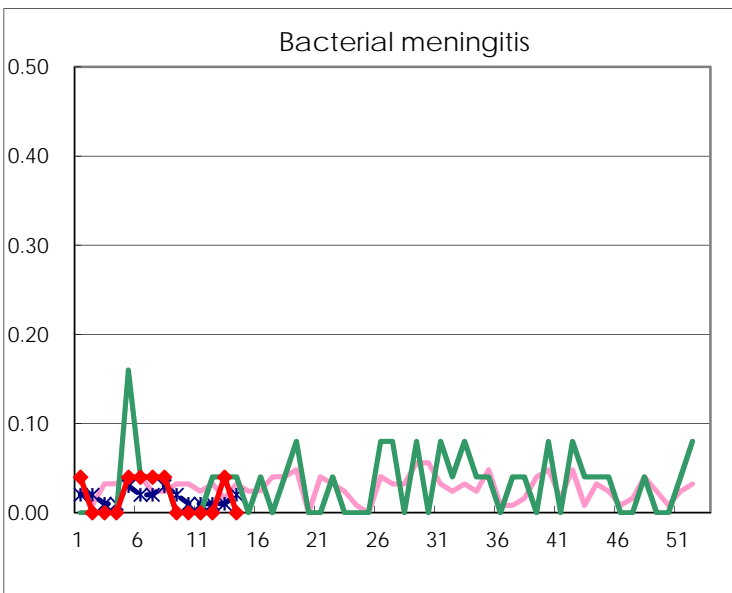
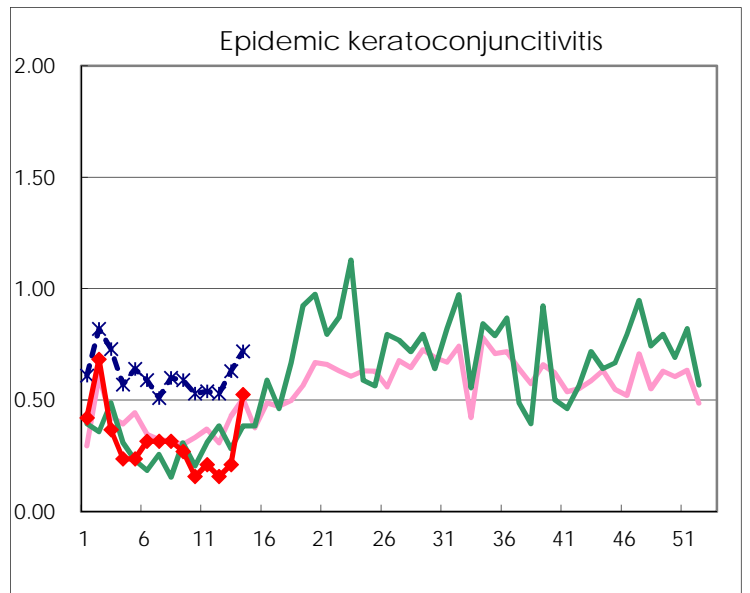
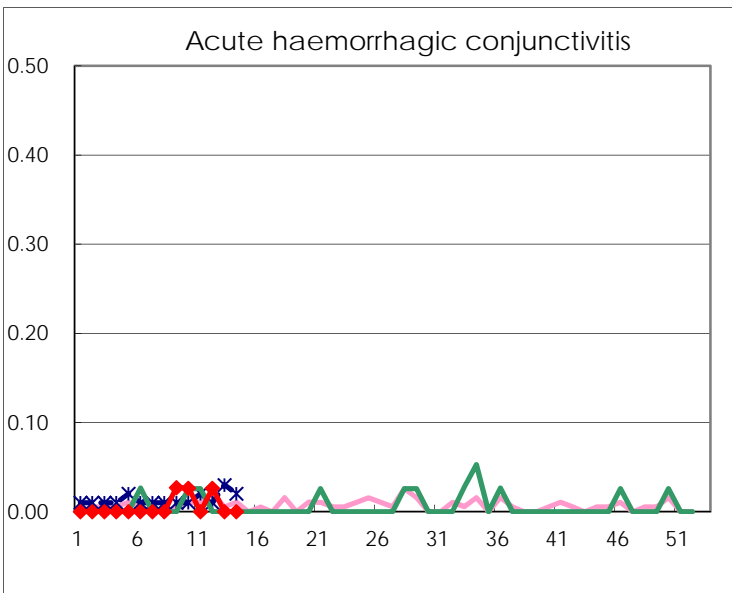
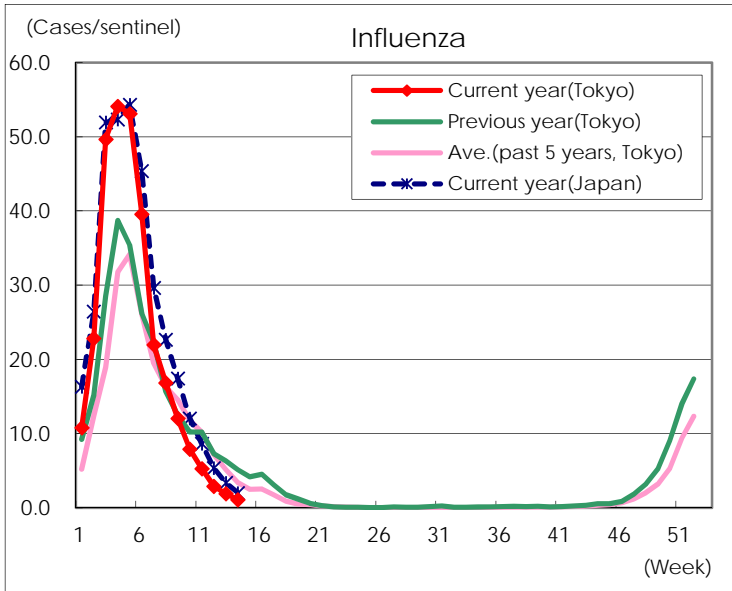
Diseases	Tokyo				
	11th	12th	13th	14th	/sentinel
Respiratory syncytial virus infection	100	77	68	54	0.21
Pharyngoconjunctival fever	48	42	51	27	0.11
Group A streptococcal pharyngitis	684	588	553	478	1.86
Infectious gastroenteritis	1,369	1,179	1,184	1,209	4.70
Chickenpox	80	65	84	80	0.31
Hand, foot, and mouth disease	6	17	9	14	0.05
Erythema infectiosum	29	24	48	60	0.23
Exanthem subitum	100	119	123	118	0.46
Herpangina	3	1	1	5	0.02
Mumps	26	14	14	19	0.07
Kawasaki disease	4	4	2	5	0.02
Cold with exanthsms	13	9	8	5	0.02
Influenza	2,185	1,204	788	452	1.10
Acute hemorrhagic conjunctivitis		1			
Epidemic keratoconjunctivitis	8	6	8	20	0.53
Bacterial meningitis			1		
Aseptic meningitis	1	1	1	2	0.08
Mycoplasma pneumonia	3	1	3	5	0.20
Chlamydial pneumonia (excluding psittacosis)	1	1	1	2	0.08
Infectious gastroenteritis (only by Rotavirus)	10	12	7	3	0.12
Influenza-Associated Hospitalizations	27	8	11	6	0.24

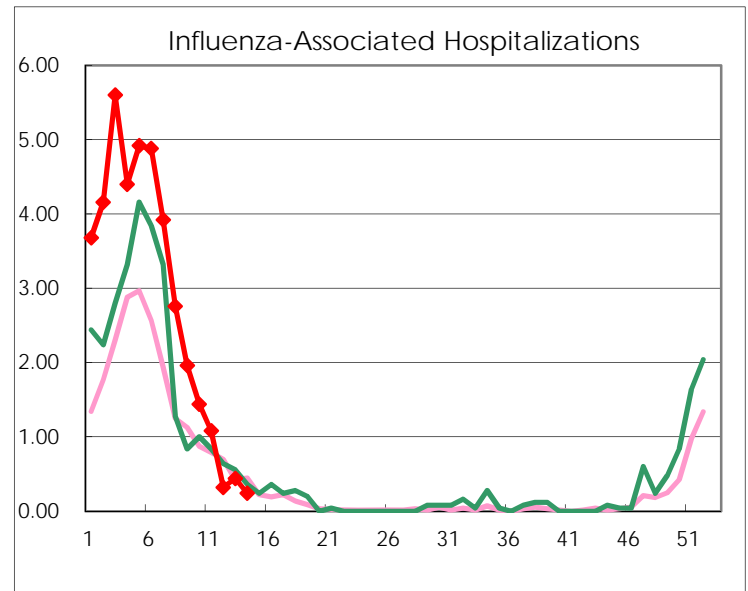
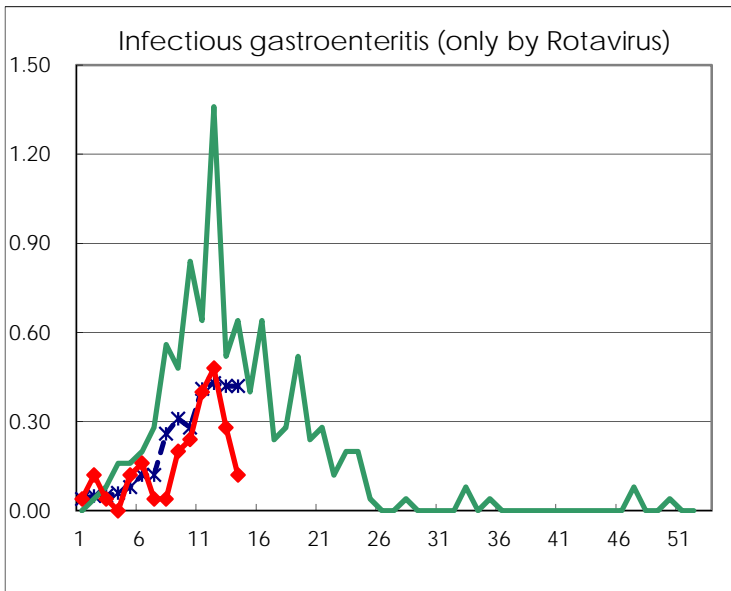
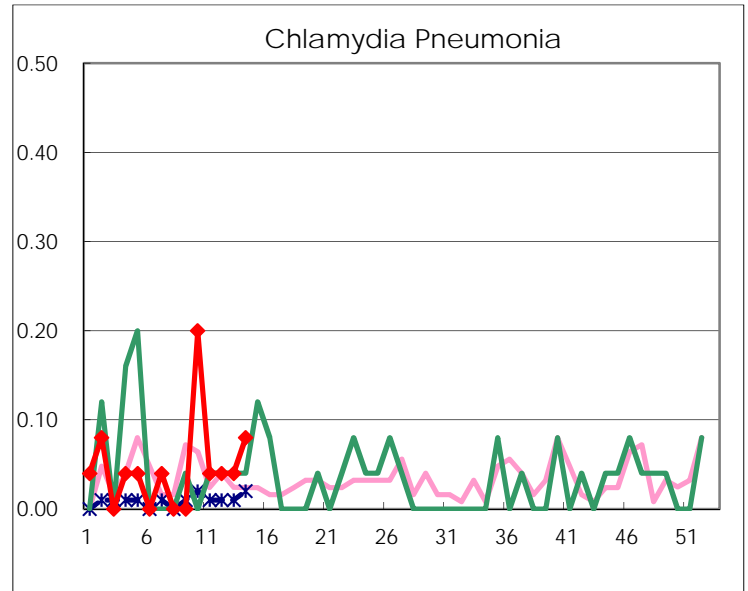
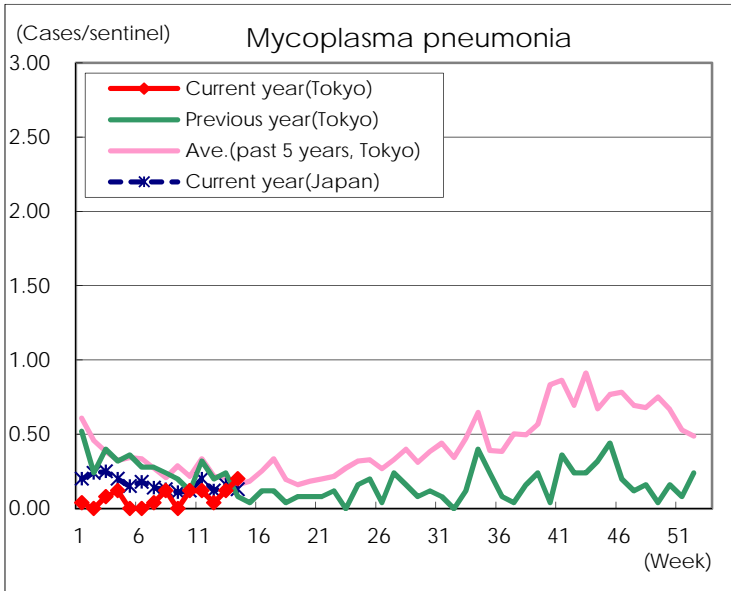
( Blank means 0. )

# Disease Trend Graph (weekly reported cases per sentinel in comparison)









Number of sentinel facilities for weekly reporting		
Types of sentinels	Number of sentinels	Sentinels having reported
Pediatric	264	257
Influenza	419	411
Ophthalmic	39	38
Specially-designated	25	25