

26 April 2018 / Number 16

Surveillance System in Tokyo, Japan

The infectious diseases which all physicians must report

All physicians must report to health centers the incidence of the diseases which are shown at page one. Health centers electronically report the individual cases to Tokyo Metropolitan Infectious Disease Surveillance Center.

The infectious diseases required to be reported by the sentinels

The numbers of patients who visit the sentinel clinics or hospitals during a week are reported to health centers in Tokyo. And they electronically report the numbers to Tokyo Metropolitan Infectious Disease Surveillance Center. We have about 500 sentinel clinics and hospitals in Tokyo.

Tokyo Metropolitan Institute of Public Health

TEL:81-3-3363-3213 FAX:81-3-5332-7365

e-mail:www@tokyo-eiken.go.jp

URL:idsc.tokyo-eiken.go.jp/

Number of patients with the diseases which all physicians must report

Category	Diseases	Tokyo					Japan	
		13th	14th	15th	16th	Cum 2018	16th	Cum 2018
I	Ebola hemorrhagic fever							
	Crimean-Congo hemorrhagic fever							
	Smallpox							
	South American hemorrhagic fever							
	Plague							
	Marburg disease							
	Lassa fever							
II	Acute poliomyelitis							
	Tuberculosis	73	70	52	62	975	339	6,180
	Diphtheria							
	Severe Acute Respiratory Syndrome(SARS)							
	Middle East Respiratory Syndrome (MERS)							
	Avian influenza H5N1							
	Avian influenza H7N9							
III	Cholera							2
	Shigellosis	2			1	16	1	58
	Enterohemorrhagic Escherichia coli infection	2	4	3	4	24	26	214
	Typhoid fever					3		15
	Paratyphoid fever				1	4	2	7
IV	Hepatitis E		3	3	1	24	13	114
	West Nile fever							
	Hepatitis A	7	9	8	14	103	17	199
	Echinococcosis							1
	Yellow fever							
	Psittacosis						2	3
	Omsk hemorrhagic fever							
	Relapsing fever							
	Kyasanur forest disease							
	Q fever							1
	Rabies							
	Coccidioidomycosis							
	Monkeypox							
	Zika virus infection							
	Severe Fever with Thrombocytopenia Syndrome							4
	Hemorrhagic fever with renal syndrome							
	Western equine encephalitis							
	Tick-borne encephalitis							
	Anthrax							
	Chikungunya fever							
	Scrub typhus(Tsutsugamushi disease)					4	2	46
	Dengue fever	2	1			15	2	31
	Eastern equine encephalitis							
	Avian influenza (excluding H5N1 and H7N9)							
	Nipah virus infection							
	Japanese spotted fever						6	11
	Japanese encephalitis							
	Hantavirus pulmonary syndrome							
	Herpes B virus infection							
	Glanders							
	Brucellosis							1
	Venezuelan equine encephalitis							
Hendra virus infection								
Epidemic typhus								
Botulism					1		2	
Malaria			1		2		13	
Tularemia								
Lyme disease								
Lyssavirus infection(excluding rabies)								
Rift valley fever								
Melioidosis								
Legionellosis			1	1	23	13	300	
Leptospirosis								
Rocky mountain spotted fever								

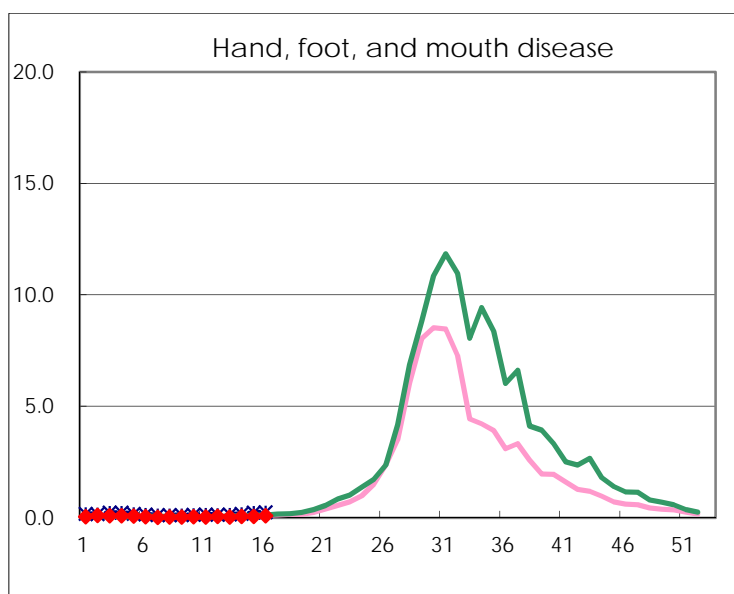
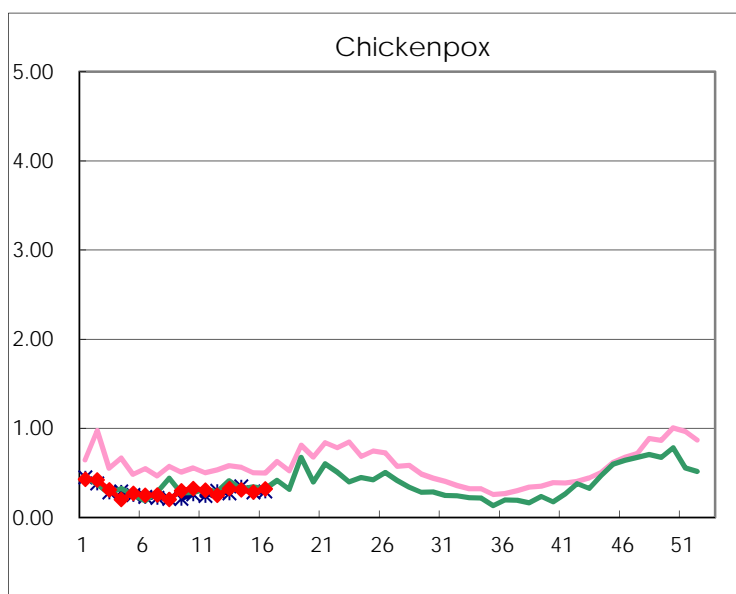
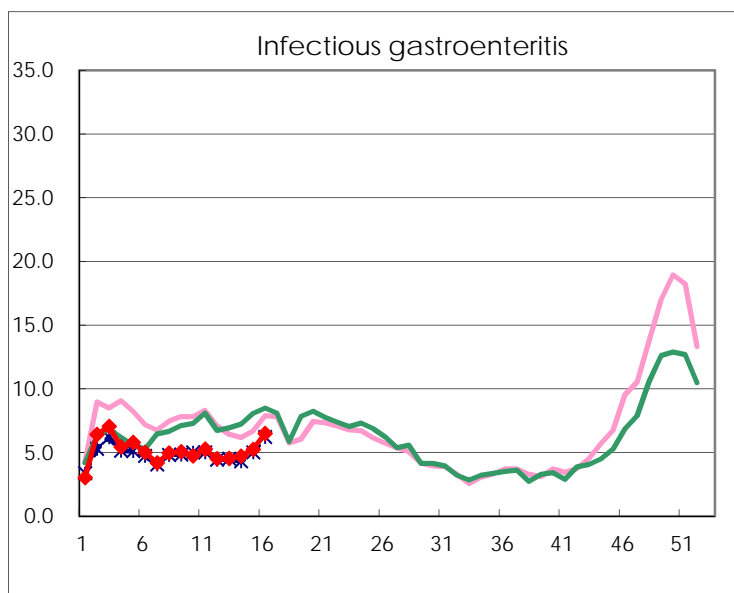
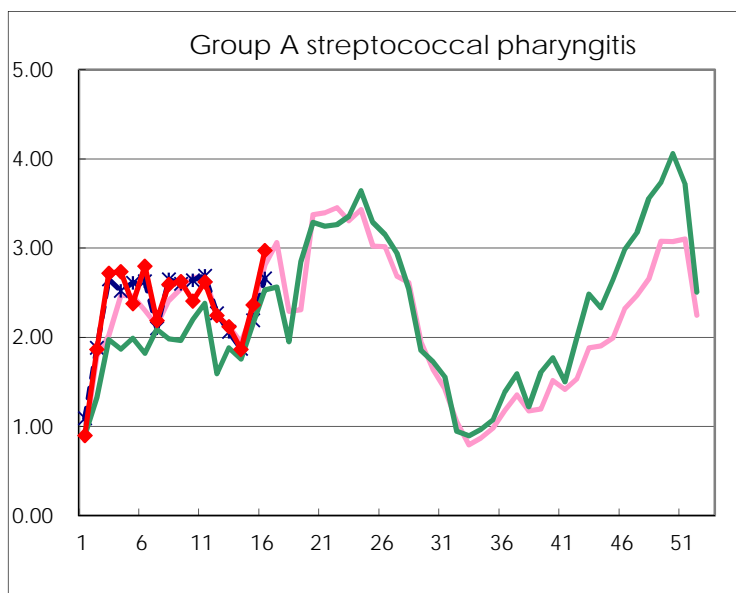
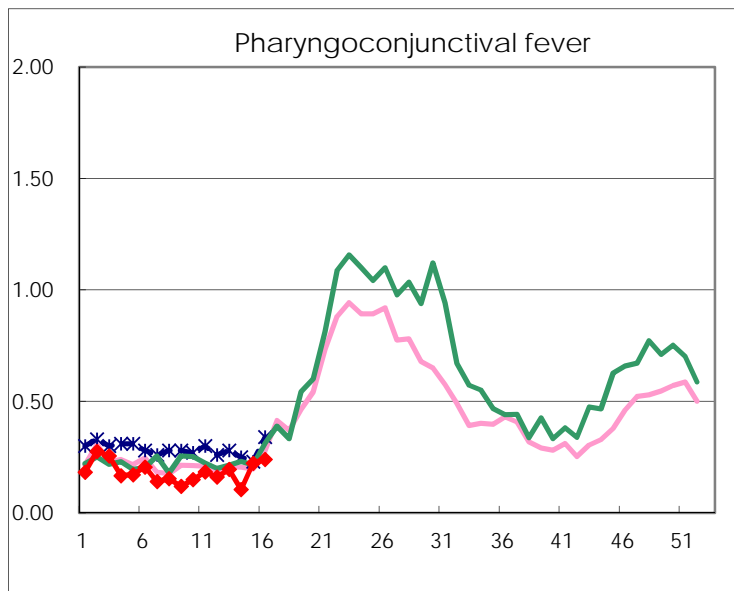
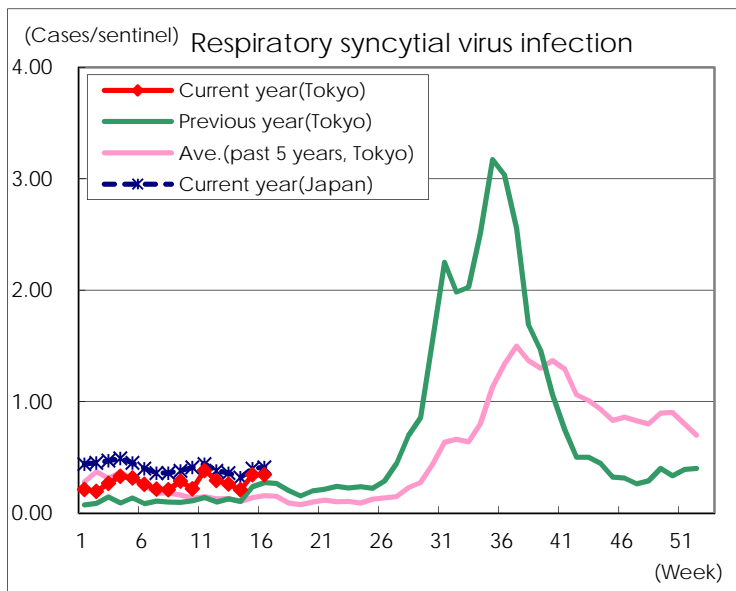
Category	Diseases	Tokyo					Japan	
		13th	14th	15th	16th	Cum 2018	16th	Cum 2018
V	Amebiasis	6	3	4	4	49	7	237
	Viral hepatitis(excluding hepatitis A and E)			1	1	9		44
	CRE infection	1	7	6	4	46	23	480
	Acute encephalitis(excluding JE and WNE)	2	1			28	5	272
	Cryptosporidiosis					1		6
	Creutzfeldt-Jakob disease			1		5	2	60
	Severe invasive streptococcal infections(TSLS)	2	1	3	2	37	10	263
	Acquired immunodeficiency syndrome (AIDS)	6	7	11	9	119	14	357
	Giardiasis	2	1		1	9	2	27
	Invasive <i>Haemophilus influenzae</i> disease		1			6	3	146
	Invasive meningococcal disease	1	1			4		14
	Invasive pneumococcal disease	11	10	10	3	149	47	1,228
	Varicella (limited to hospitalized case)			1	1	13	7	109
	Congenital rubella syndrome							
	Syphilis	27	30	20	21	455	79	1,795
	Disseminated cryptococcosis	1			1	9	3	48
	Tetanus					1	1	19
	Vancomycin-resistant <i>S. aureus</i> infection							
	Vancomycin-resistant Enterococcus infection					1		13
	Pertussis	7	12	6	12	106	72	1,023
Rubella				1	1	4	12	
Measles		1	3	3	8	13	86	
MDRA infection	1			1	2	1	5	

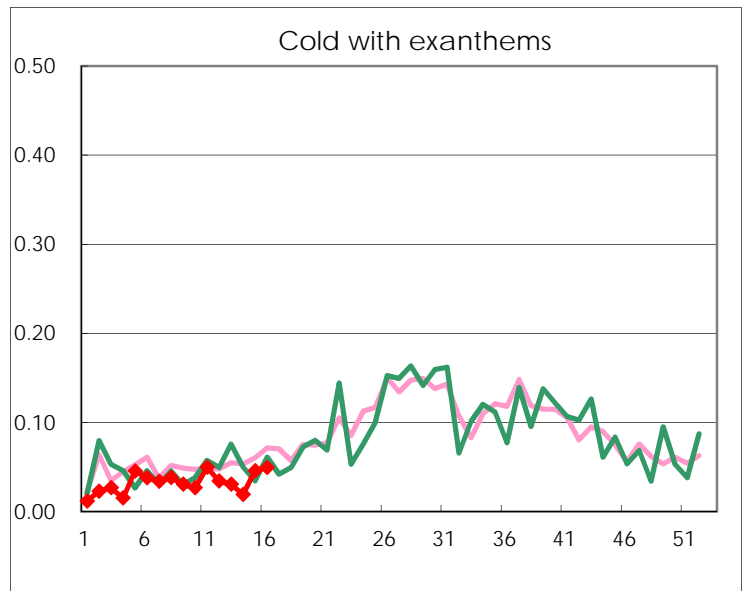
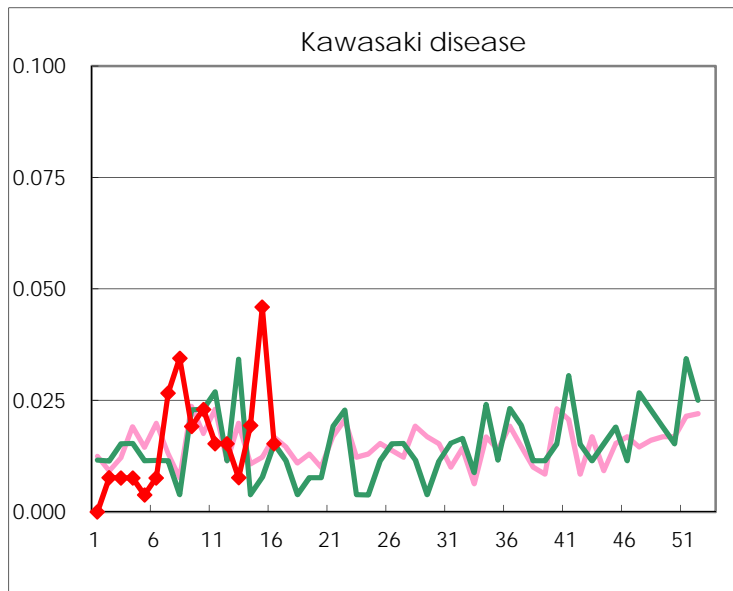
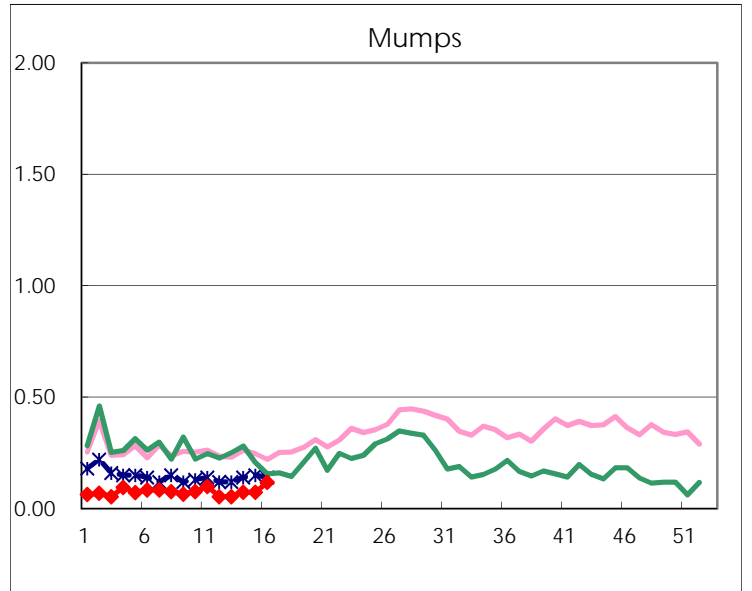
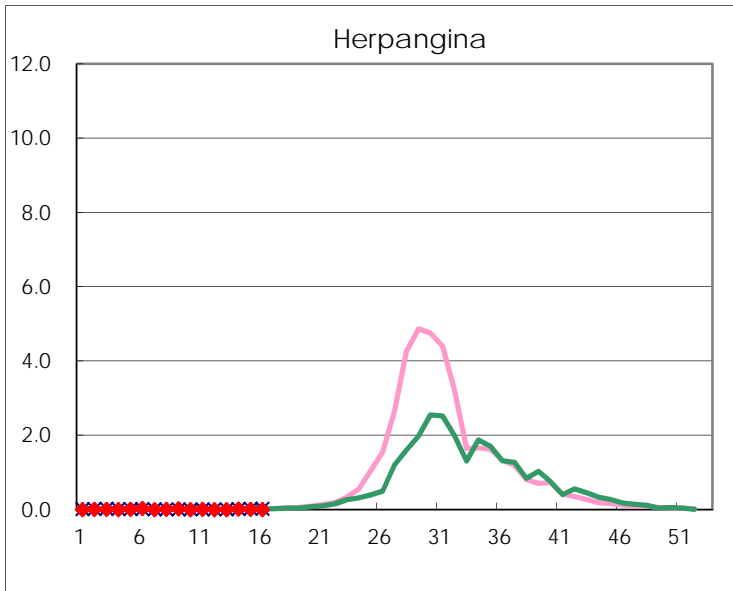
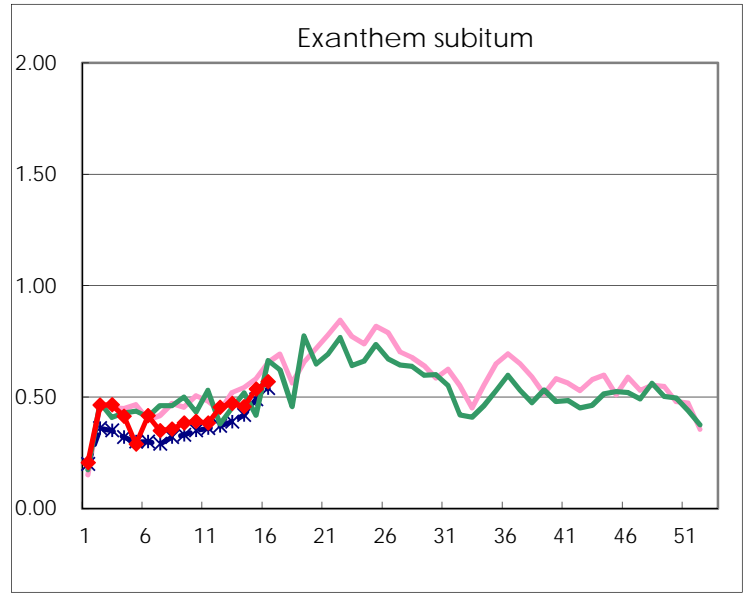
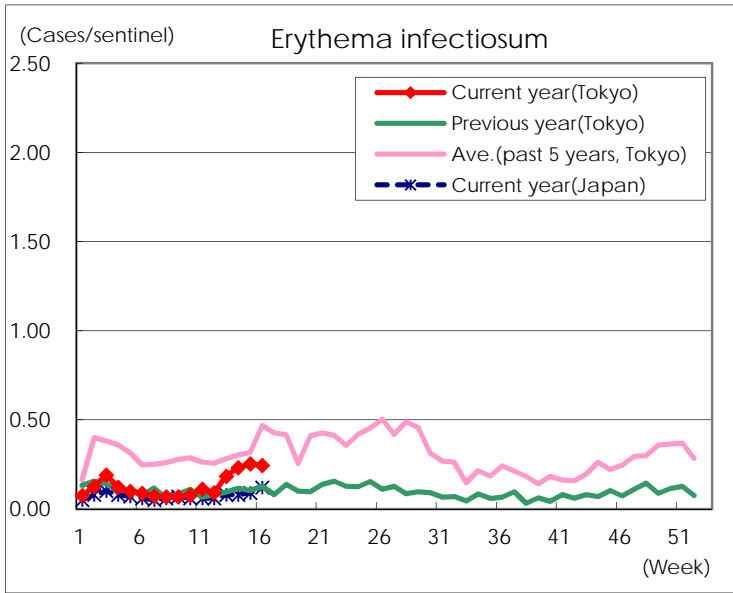
Number of patients with the diseases to be reported
by the designated clinics and hospitals

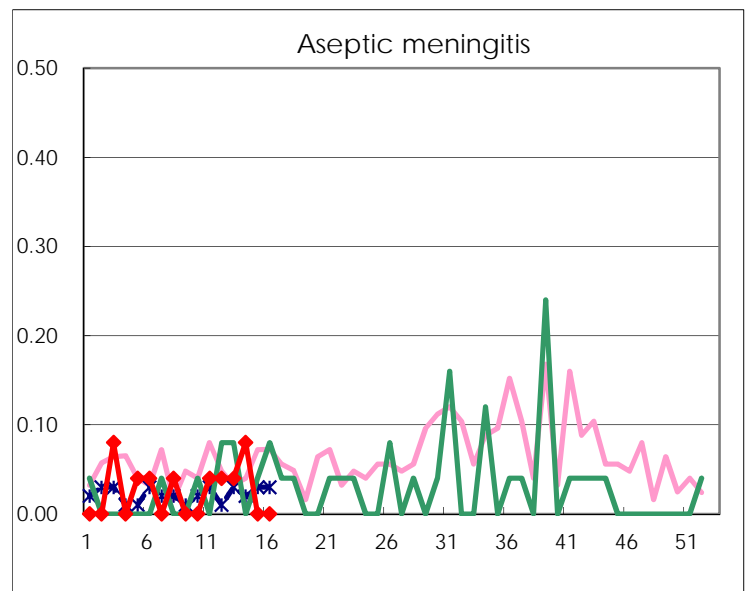
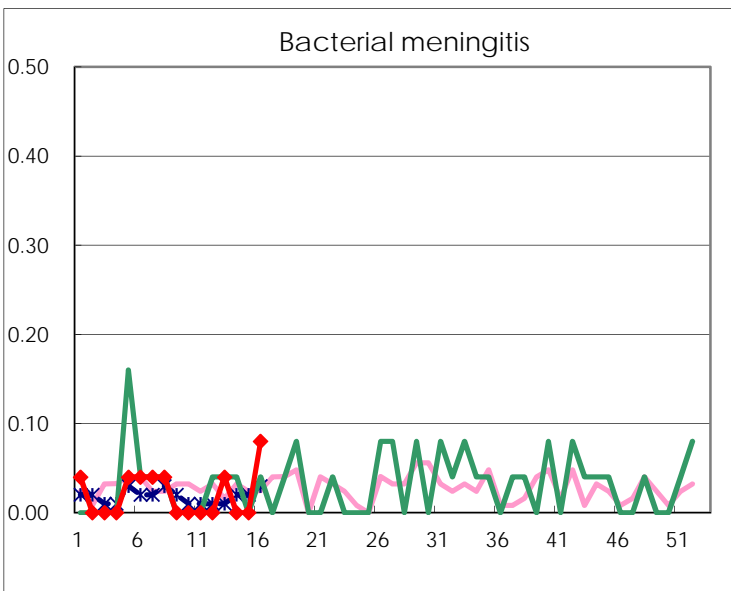
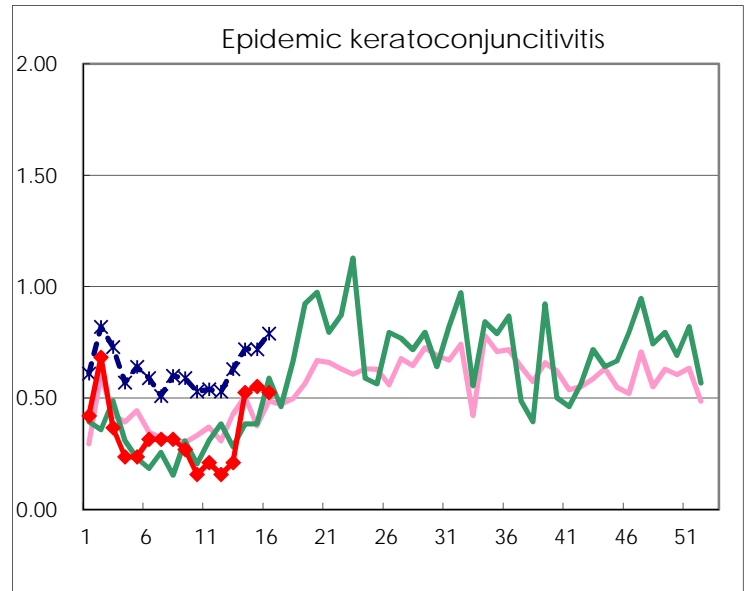
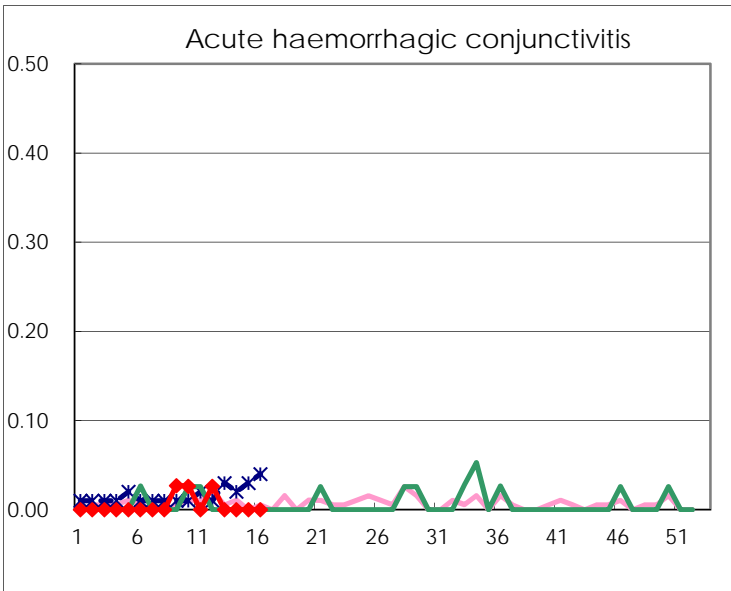
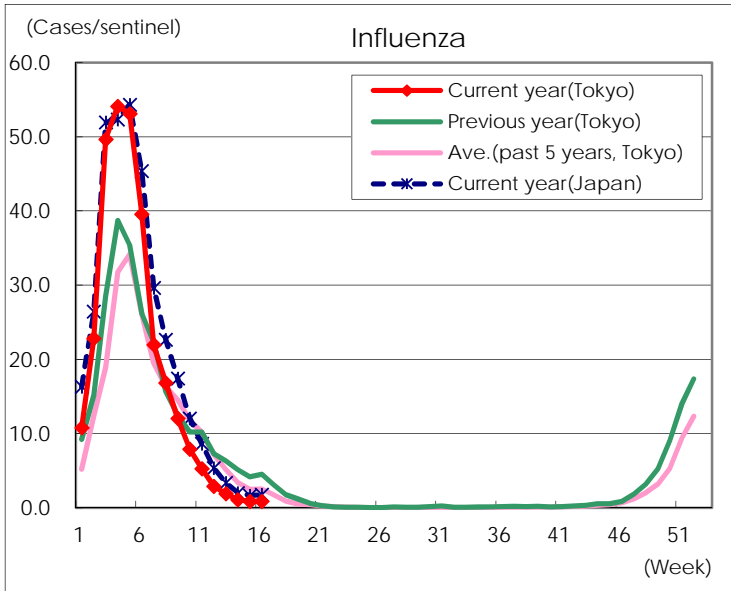
Diseases	Tokyo				
	13th	14th	15th	16th	/sentinel
Respiratory syncytial virus infection	68	54	90	90	0.34
Pharyngoconjunctival fever	51	27	58	63	0.24
Group A streptococcal pharyngitis	553	481	617	779	2.97
Infectious gastroenteritis	1,184	1,215	1,368	1,701	6.49
Chickenpox	84	80	74	84	0.32
Hand, foot, and mouth disease	9	14	15	22	0.08
Erythema infectiosum	48	60	66	64	0.24
Exanthem subitum	123	118	140	149	0.57
Herpangina	1	5	3	1	
Mumps	14	19	19	31	0.12
Kawasaki disease	2	5	12	4	0.02
Cold with exanthems	8	5	12	13	0.05
Influenza	788	452	358	370	0.90
Acute hemorrhagic conjunctivitis					
Epidemic keratoconjunctivitis	8	20	21	20	0.53
Bacterial meningitis	1			2	0.08
Aseptic meningitis	1	2			
Mycoplasma pneumonia	3	5		1	0.04
Chlamydial pneumonia (excluding psittacosis)	1	2			
Infectious gastroenteritis (only by Rotavirus)	7	3	7	8	0.32
Influenza-Associated Hospitalizations	11	6	7	7	0.28

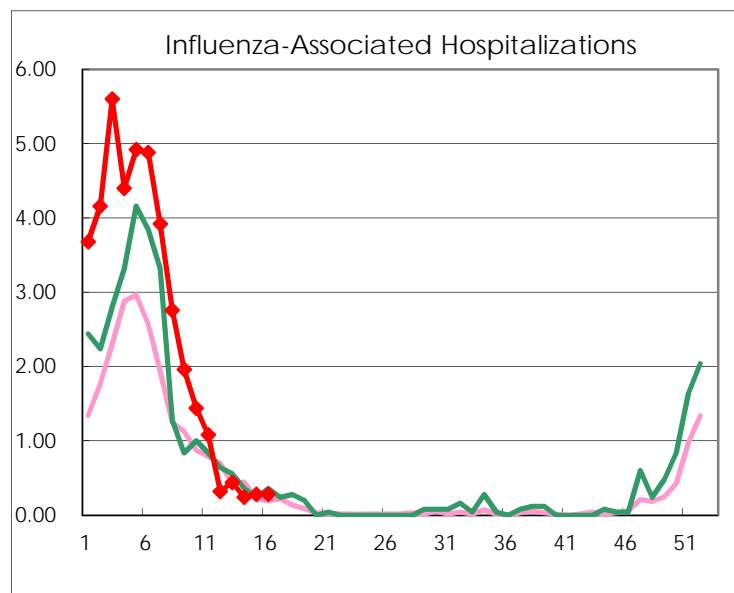
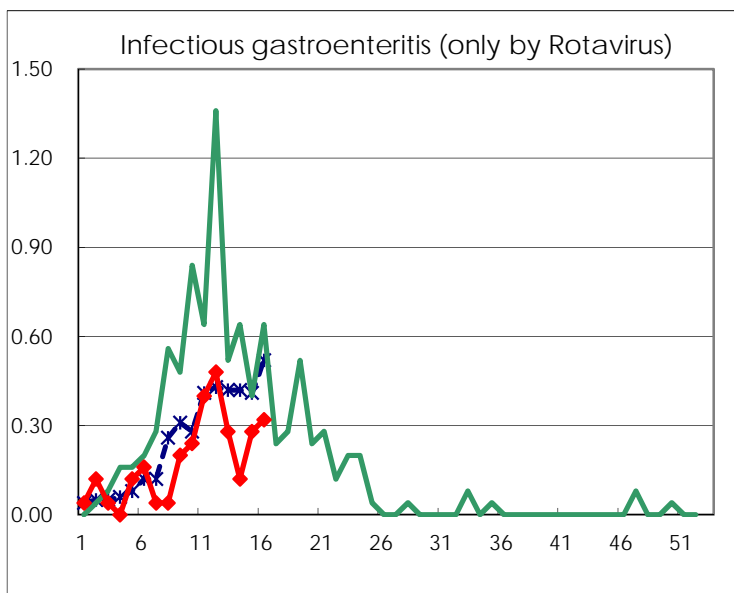
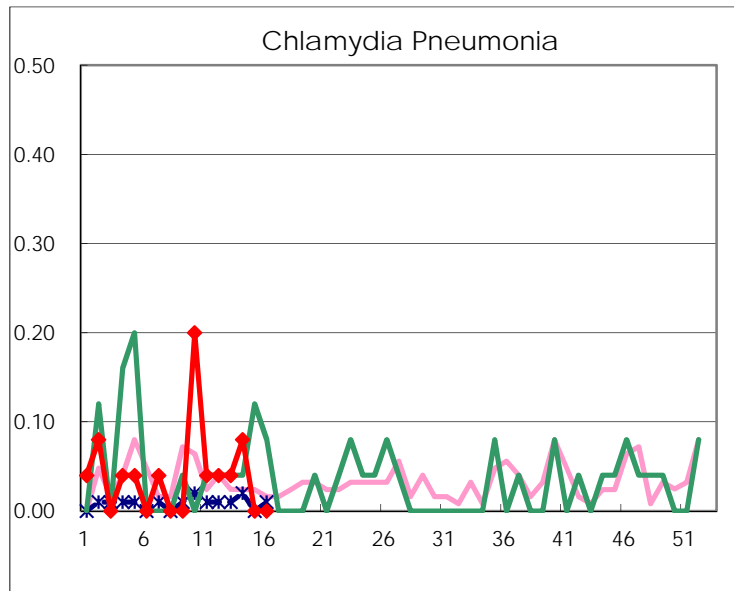
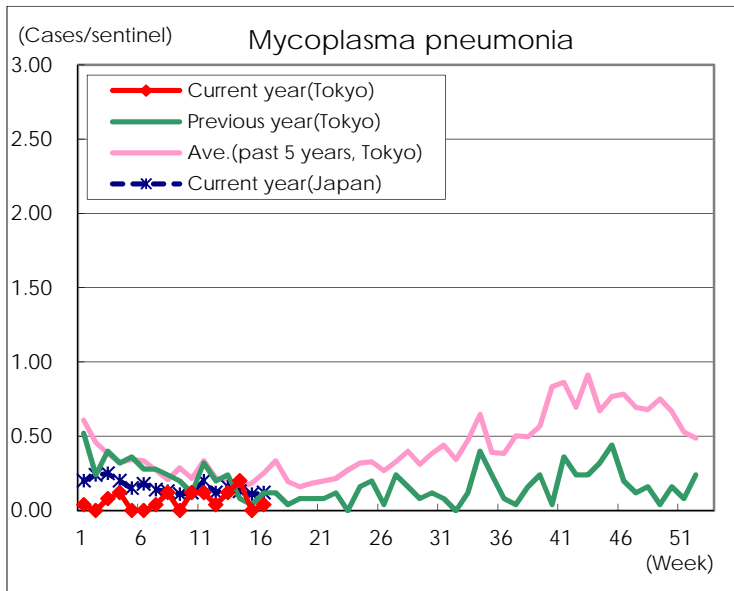
(Blank means 0.)

Disease Trend Graph (weekly reported cases per sentinel in comparison)









Number of sentinel facilities for weekly reporting		
Types of sentinels	Number of sentinels	Sentinels having reported
Pediatric	264	262
Influenza	419	413
Ophthalmic	39	38
Specially-designated	25	25