

7 May 2018 / Number 17

Surveillance System in Tokyo, Japan

The infectious diseases which all physicians must report

All physicians must report to health centers the incidence of the diseases which are shown at page one. Health centers electronically report the individual cases to Tokyo Metropolitan Infectious Disease Surveillance Center.

The infectious diseases required to be reported by the sentinels

The numbers of patients who visit the sentinel clinics or hospitals during a week are reported to health centers in Tokyo. And they electronically report the numbers to Tokyo Metropolitan Infectious Disease Surveillance Center. We have about 500 sentinel clinics and hospitals in Tokyo.

Tokyo Metropolitan Institute of Public Health

TEL:81-3-3363-3213 FAX:81-3-5332-7365

e-mail:www@tokyo-eiken.go.jp

URL:idsc.tokyo-eiken.go.jp/

Number of patients with the diseases which all physicians must report

Category	Diseases	Tokyo				Cum 2018	Japan	
		14th	15th	16th	17th		17th	Cum 2018
I	Ebola hemorrhagic fever							
	Crimean-Congo hemorrhagic fever							
	Smallpox							
	South American hemorrhagic fever							
	Plague							
	Marburg disease							
	Lassa fever							
II	Acute poliomyelitis							
	Tuberculosis	75	58	65	78	1,067	344	6,619
	Diphtheria							
	Severe Acute Respiratory Syndrome(SARS)							
	Middle East Respiratory Syndrome (MERS)							
	Avian influenza H5N1							
	Avian influenza H7N9							
III	Cholera							2
	Shigellosis			1		16		58
	Enterohemorrhagic Escherichia coli infection	4	3	4	5	29	28	251
	Typhoid fever					3		15
	Paratyphoid fever			1	1	5	1	8
IV	Hepatitis E	3	3	1		24	5	124
	West Nile fever							
	Hepatitis A	9	8	14	9	112	16	221
	Echinococcosis							3
	Yellow fever							
	Psittacosis							3
	Omsk hemorrhagic fever							
	Relapsing fever							
	Kyasanur forest disease							
	Q fever							1
	Rabies							
	Coccidioidomycosis							
	Monkeypox							
	Zika virus infection							
	Severe Fever with Thrombocytopenia Syndrome						2	6
	Hemorrhagic fever with renal syndrome							
	Western equine encephalitis							
	Tick-borne encephalitis							
	Anthrax							
	Chikungunya fever						1	1
	Scrub typhus(Tsutsugamushi disease)					4	3	49
	Dengue fever	1			1	16	2	33
	Eastern equine encephalitis							
	Avian influenza (excluding H5N1 and H7N9)							
	Nipah virus infection							
	Japanese spotted fever						6	17
	Japanese encephalitis							
	Hantavirus pulmonary syndrome							
	Herpes B virus infection							
	Glanders							
	Brucellosis							1
	Venezuelan equine encephalitis							
Hendra virus infection								
Epidemic typhus								
Botulism					1		2	
Malaria		1			2		13	
Tularemia								
Lyme disease								
Lyssavirus infection(excluding rabies)								
Rift valley fever								
Melioidosis								
Legionellosis		1	1	1	24	12	314	
Leptospirosis								
Rocky mountain spotted fever								

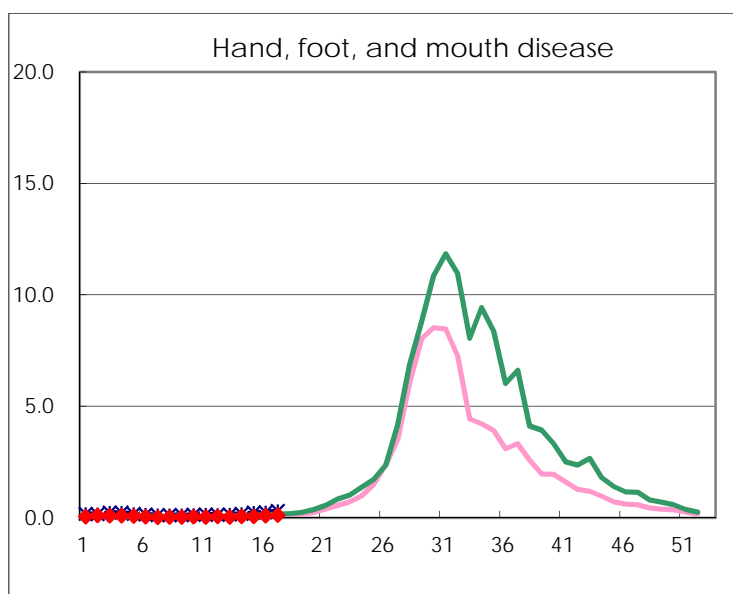
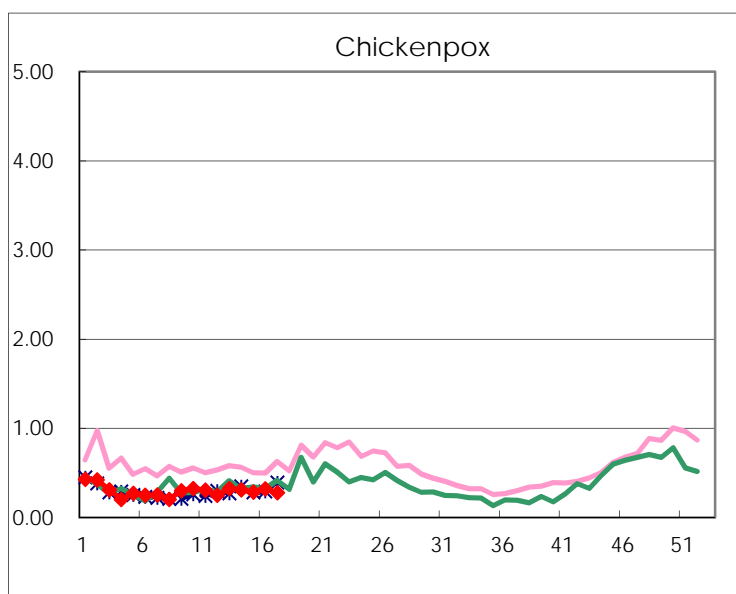
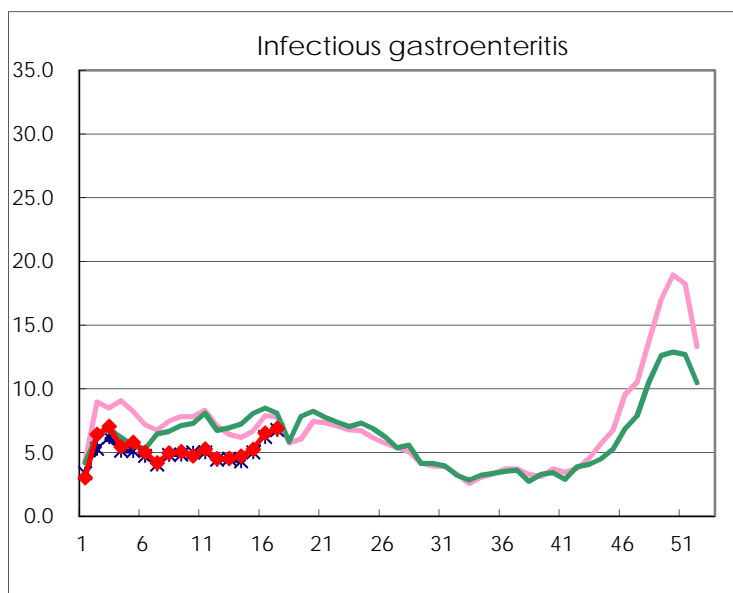
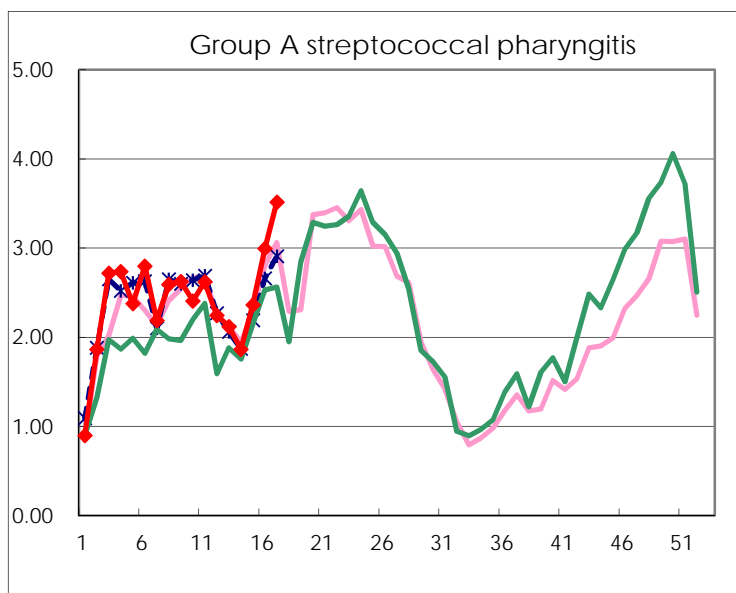
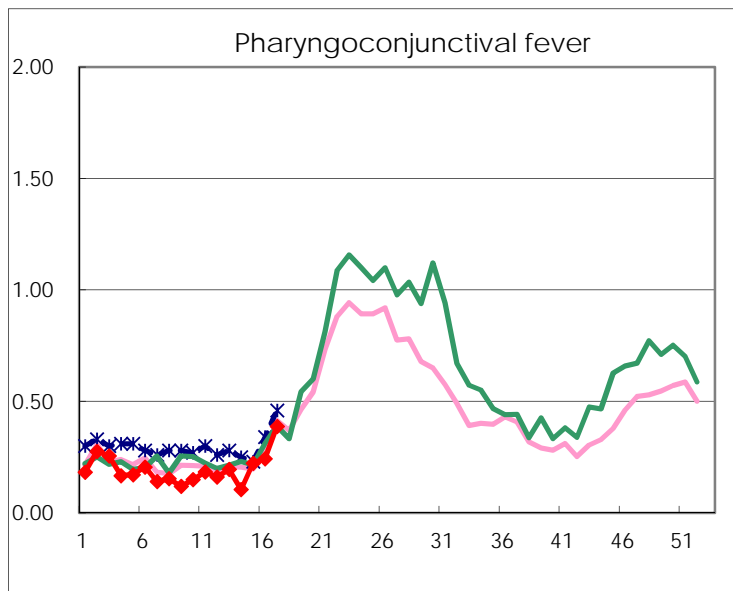
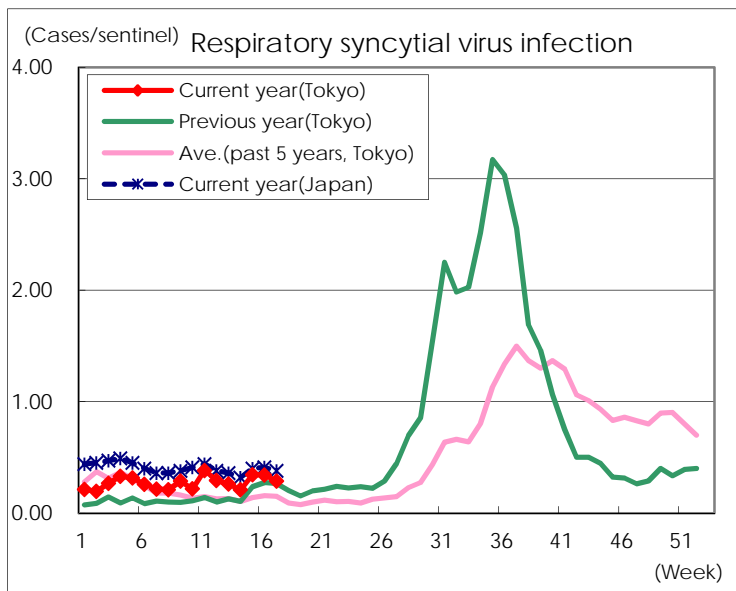
Category	Diseases	Tokyo					Japan	
		14th	15th	16th	17th	Cum 2018	17th	Cum 2018
V	Amebiasis	3	4	5	3	53	10	251
	Viral hepatitis(excluding hepatitis A and E)		1	1	2	11	3	50
	CRE infection	7	6	4	4	50	16	511
	Acute encephalitis(excluding JE and WNE)	1			1	29	3	279
	Cryptosporidiosis					1		6
	Creutzfeldt-Jakob disease		1			5	3	62
	Severe invasive streptococcal infections(TSLs)	1	3	2	2	39	9	275
	Acquired immunodeficiency syndrome (AIDS)	7	11	10	3	123	13	380
	Giardiasis	1		1		9		27
	Invasive <i>Haemophilus influenzae</i> disease	1			1	7	5	153
	Invasive meningococcal disease	1				4	1	15
	Invasive pneumococcal disease	10	10	4	13	163	69	1,322
	Varicella (limited to hospitalized case)		1	1	2	15	4	116
	Congenital rubella syndrome							
	Syphilis	30	21	22	21	478	68	1,916
	Disseminated cryptococcosis			1		9	3	53
	Tetanus					1		21
	Vancomycin-resistant <i>S. aureus</i> infection							
	Vancomycin-resistant Enterococcus infection					1	2	15
	Pertussis	12	6	12	12	118	78	1,138
Rubella			1		1	1	12	
Measles	1	3	3	1	9	12	102	
MDRA infection			1		2		5	

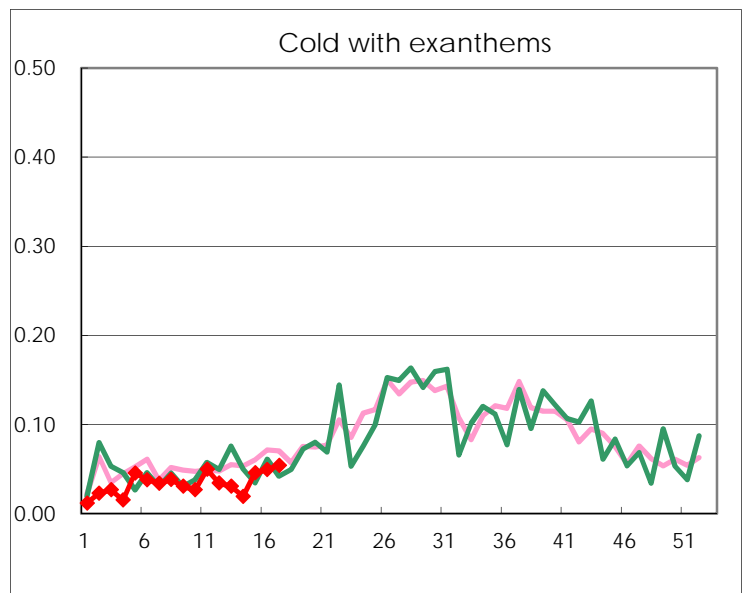
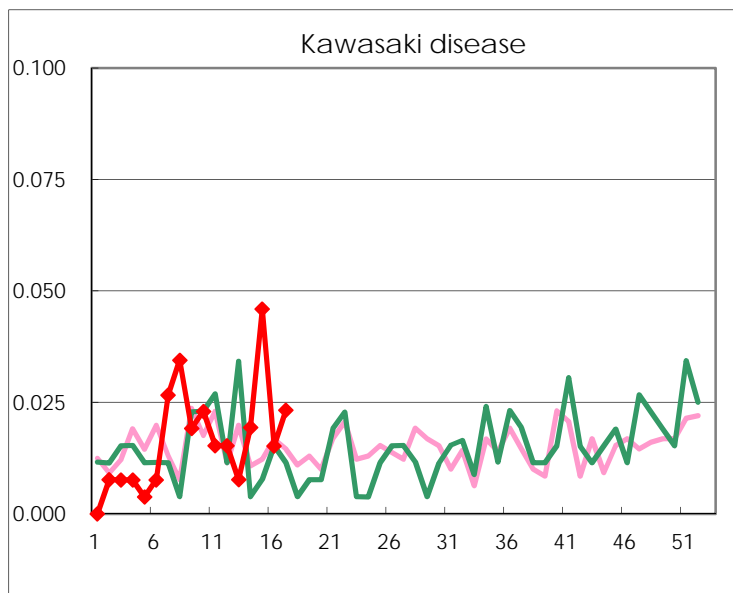
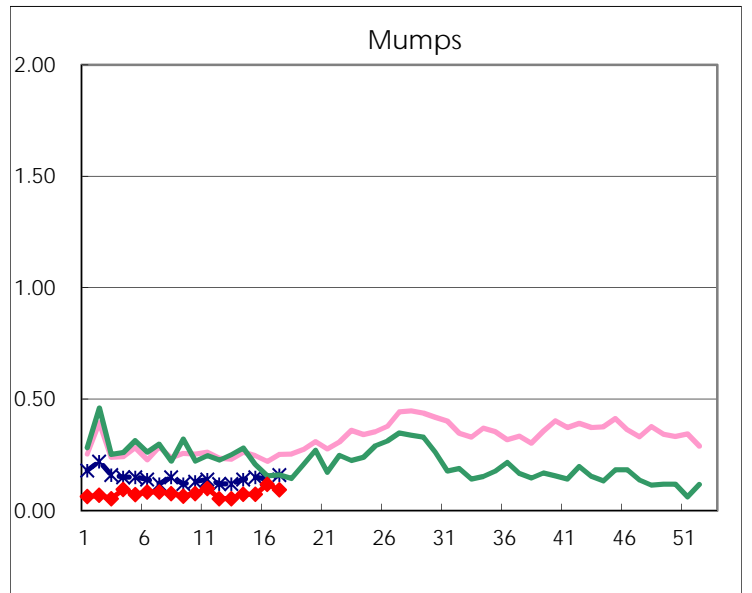
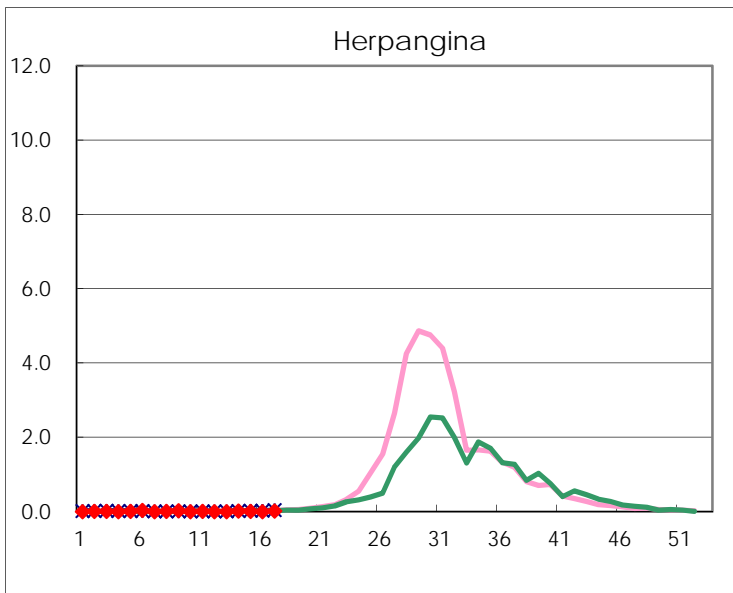
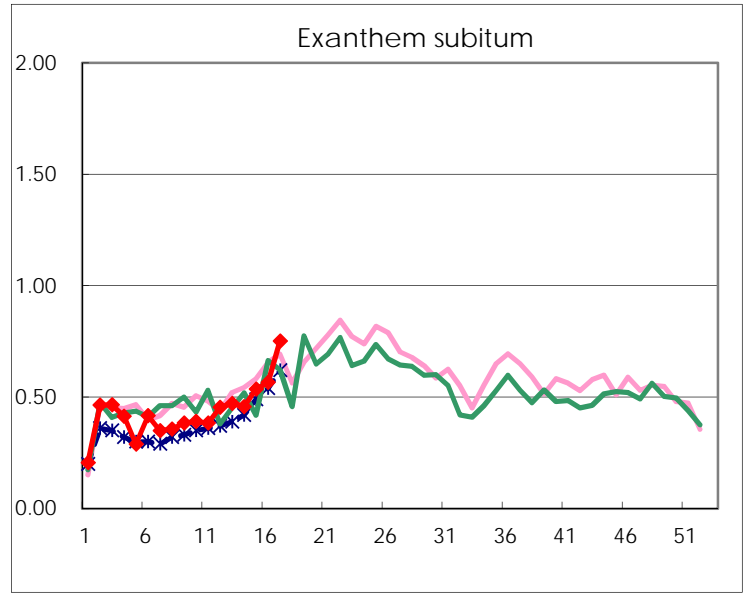
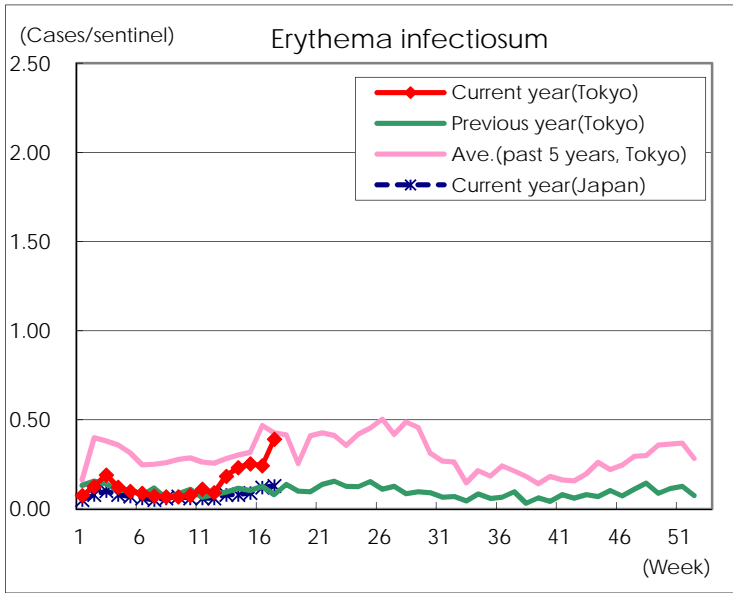
Number of patients with the diseases to be reported
by the designated clinics and hospitals

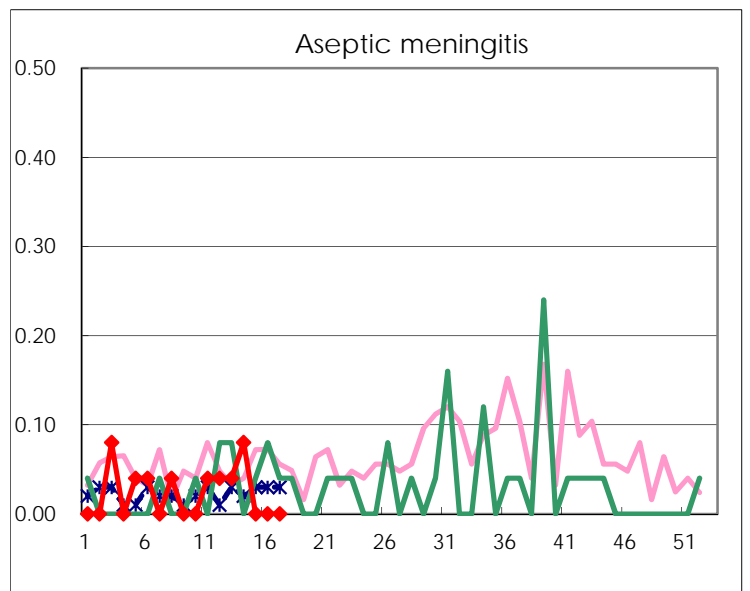
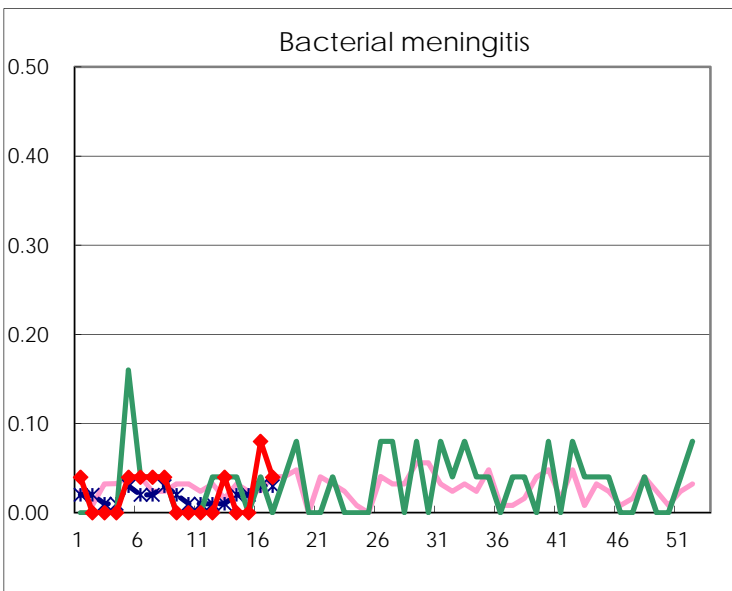
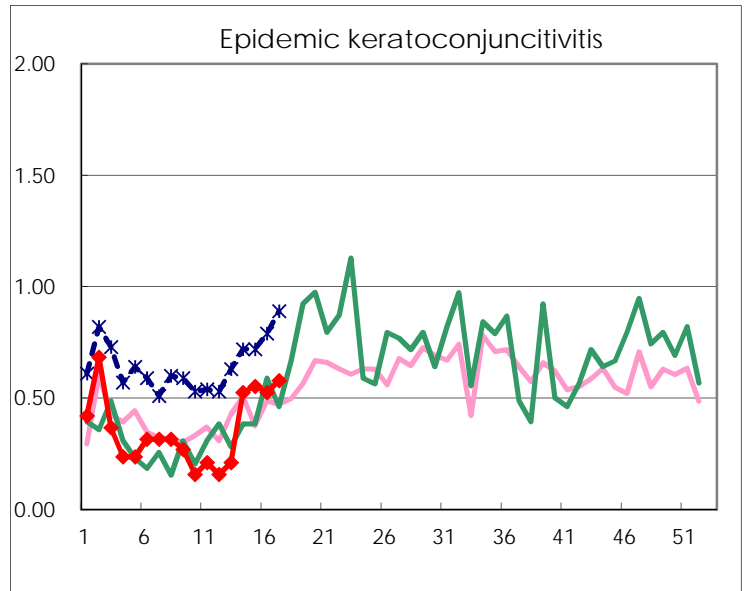
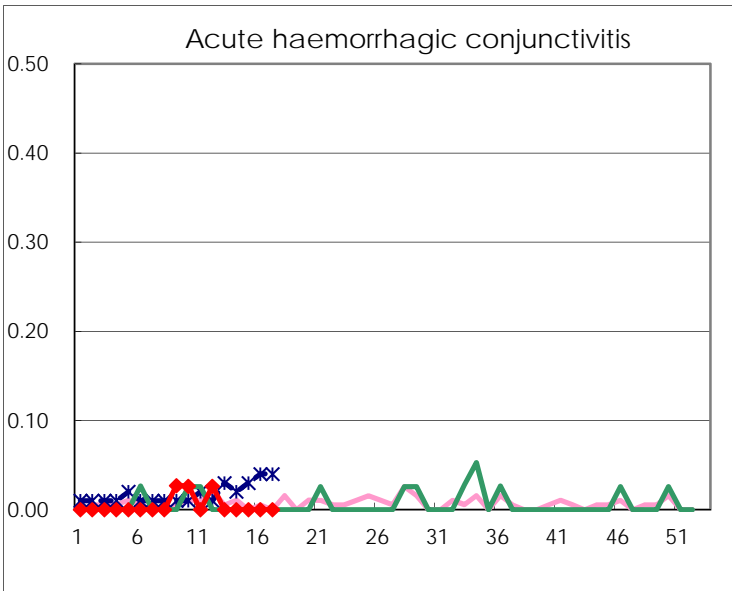
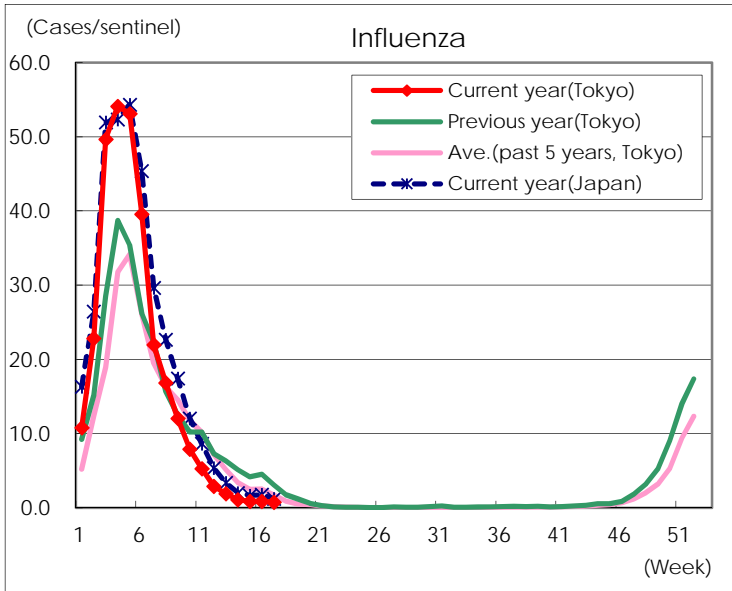
Diseases	Tokyo				
	14th	15th	16th	17th	/sentinel
Respiratory syncytial virus infection	54	90	90	74	0.29
Pharyngoconjunctival fever	27	58	64	100	0.39
Group A streptococcal pharyngitis	481	617	788	907	3.52
Infectious gastroenteritis	1,215	1,368	1,711	1,774	6.88
Chickenpox	80	74	84	71	0.28
Hand, foot, and mouth disease	14	15	22	29	0.11
Erythema infectiosum	60	66	64	101	0.39
Exanthem subitum	118	140	149	194	0.75
Herpangina	5	3	1	5	0.02
Mumps	19	19	31	24	0.09
Kawasaki disease	5	12	4	6	0.02
Cold with exanthems	5	12	13	14	0.05
Influenza	452	358	372	298	0.73
Acute hemorrhagic conjunctivitis					
Epidemic keratoconjunctivitis	20	21	20	22	0.58
Bacterial meningitis			2	1	0.04
Aseptic meningitis	2				
Mycoplasma pneumonia	5		1	1	0.04
Chlamydial pneumonia (excluding psittacosis)	2			1	0.04
Infectious gastroenteritis (only by Rotavirus)	3	7	8	6	0.24
Influenza-Associated Hospitalizations	6	7	7	7	0.28

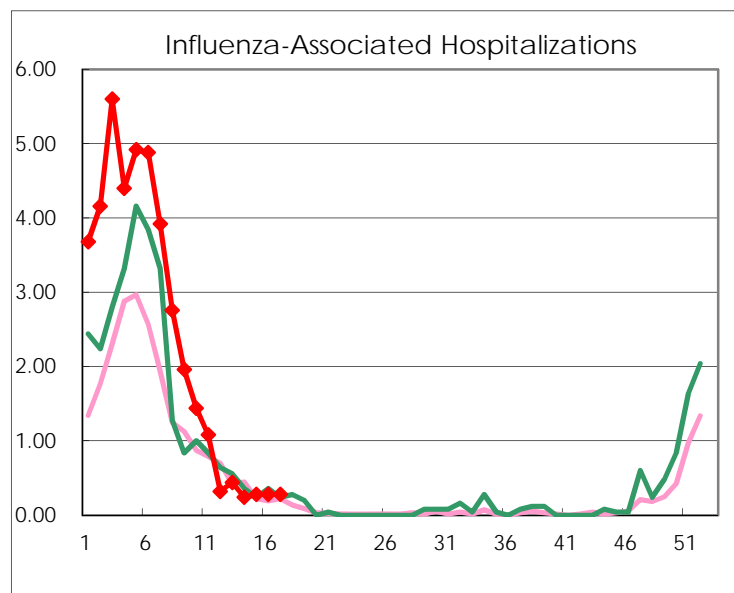
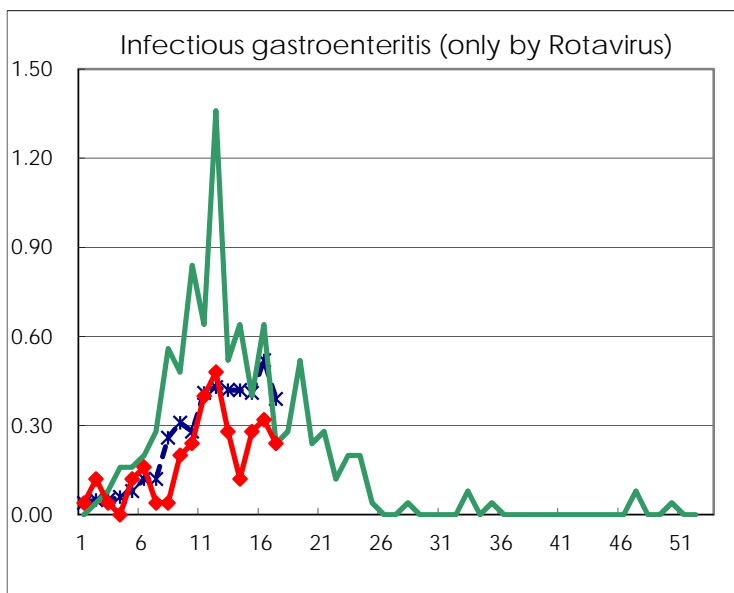
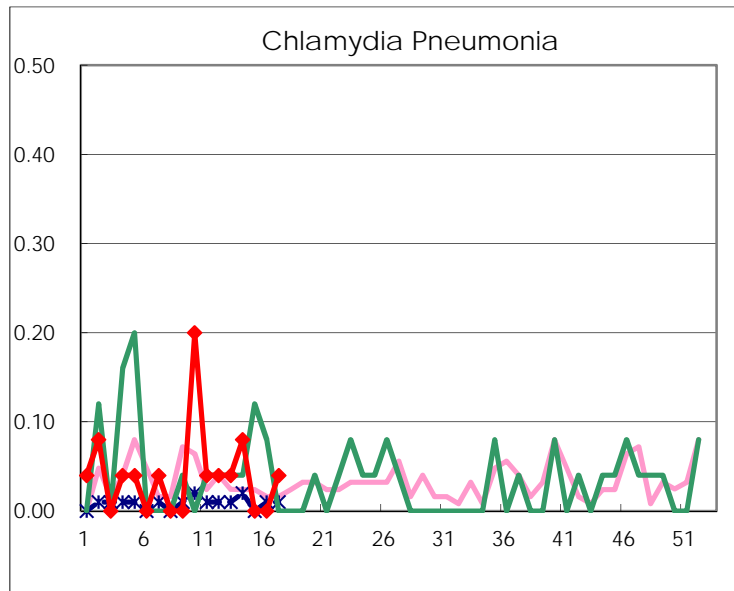
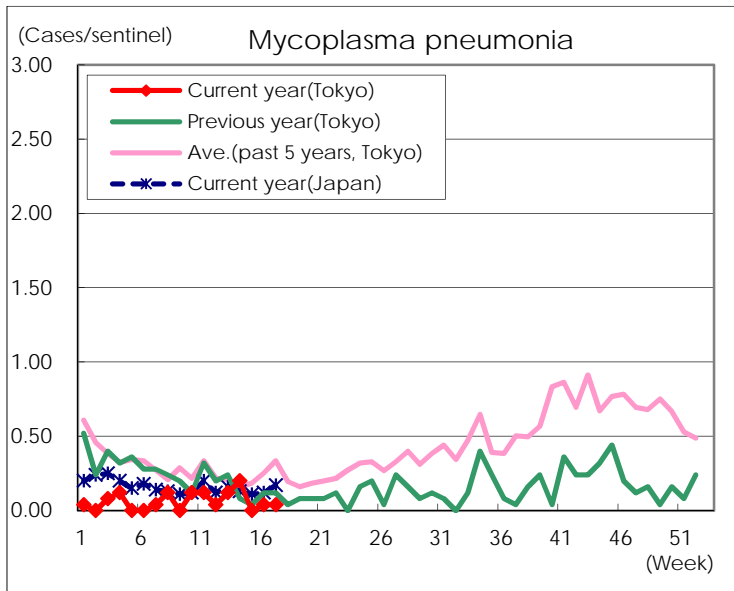
(Blank means 0.)

Disease Trend Graph (weekly reported cases per sentinel in comparison)









Number of sentinel facilities for weekly reporting		
Types of sentinels	Number of sentinels	Sentinels having reported
Pediatric	264	258
Influenza	419	407
Ophthalmic	39	38
Specially-designated	25	25