

10 May 2018 / Number 18

Surveillance System in Tokyo, Japan

The infectious diseases which all physicians must report

All physicians must report to health centers the incidence of the diseases which are shown at page one. Health centers electronically report the individual cases to Tokyo Metropolitan Infectious Disease Surveillance Center.

The infectious diseases required to be reported by the sentinels

The numbers of patients who visit the sentinel clinics or hospitals during a week are reported to health centers in Tokyo. And they electronically report the numbers to Tokyo Metropolitan Infectious Disease Surveillance Center. We have about 500 sentinel clinics and hospitals in Tokyo.

Tokyo Metropolitan Institute of Public Health

TEL:81-3-3363-3213 FAX:81-3-5332-7365

e-mail:www@tokyo-eiken.go.jp

URL:idsc.tokyo-eiken.go.jp/

Number of patients with the diseases which all physicians must report

Category	Diseases	Tokyo					Japan	
		15th	16th	17th	18th	Cum 2018	18th	Cum 2018
I	Ebola hemorrhagic fever							
	Crimean-Congo hemorrhagic fever							
	Smallpox							
	South American hemorrhagic fever							
	Plague							
	Marburg disease							
	Lassa fever							
II	Acute poliomyelitis							
	Tuberculosis	63	71	85	27	1,112	154	6,863
	Diphtheria							
	Severe Acute Respiratory Syndrome(SARS)							
	Middle East Respiratory Syndrome (MERS)							
	Avian influenza H5N1							
	Avian influenza H7N9							
III	Cholera							2
	Shigellosis		1			16	1	59
	Enterohemorrhagic Escherichia coli infection	3	4	5	3	32	15	272
	Typhoid fever					3		15
	Paratyphoid fever		1	1		5		8
IV	Hepatitis E	3	1			24	2	130
	West Nile fever							
	Hepatitis A	8	14	9	10	122	6	235
	Echinococcosis							3
	Yellow fever							
	Psittacosis							3
	Omsk hemorrhagic fever							
	Relapsing fever							
	Kyasanur forest disease							
	Q fever							1
	Rabies							
	Coccidioidomycosis							
	Monkeypox							
	Zika virus infection							
	Severe Fever with Thrombocytopenia Syndrome						3	10
	Hemorrhagic fever with renal syndrome							
	Western equine encephalitis							
	Tick-borne encephalitis							
	Anthrax							
	Chikungunya fever							1
	Scrub typhus(Tsutsugamushi disease)					4	1	50
	Dengue fever			1		16	1	34
	Eastern equine encephalitis							
	Avian influenza (excluding H5N1 and H7N9)							
	Nipah virus infection							
	Japanese spotted fever						1	19
	Japanese encephalitis							
	Hantavirus pulmonary syndrome							
	Herpes B virus infection							
	Glanders							
	Brucellosis							1
	Venezuelan equine encephalitis							
	Hendra virus infection							
Epidemic typhus								
Botulism					1		2	
Malaria	1				2	1	13	
Tularemia								
Lyme disease								
Lyssavirus infection(excluding rabies)								
Rift valley fever								
Melioidosis								
Legionellosis	1	1	1		24	12	330	
Leptospirosis								
Rocky mountain spotted fever								

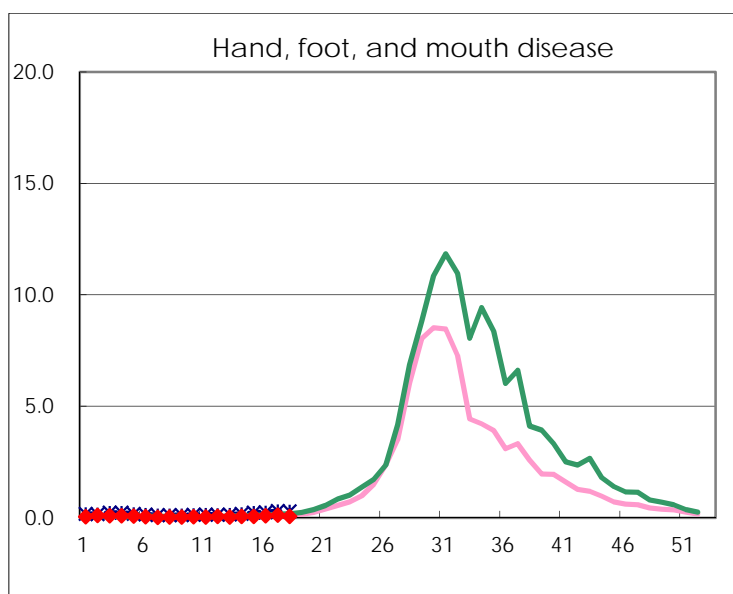
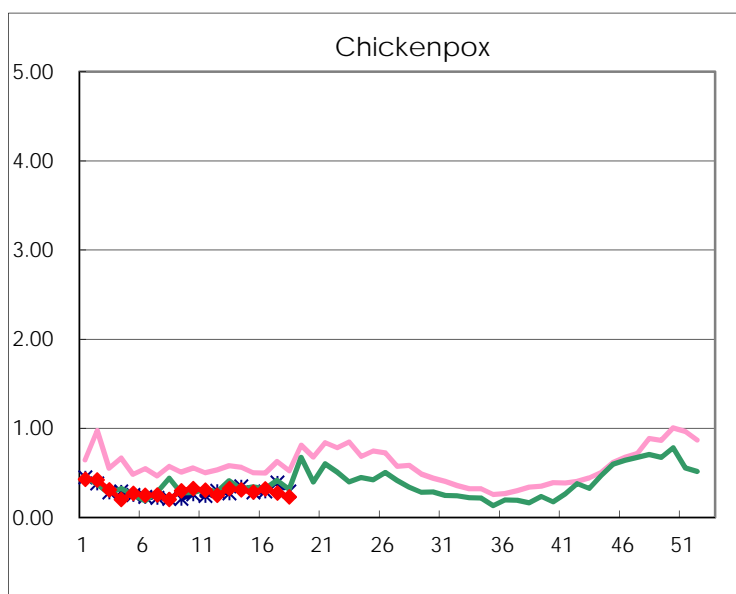
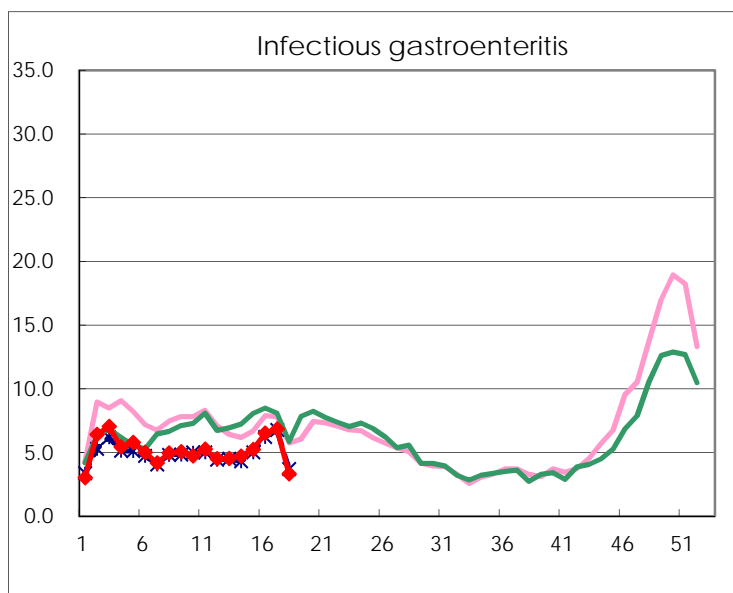
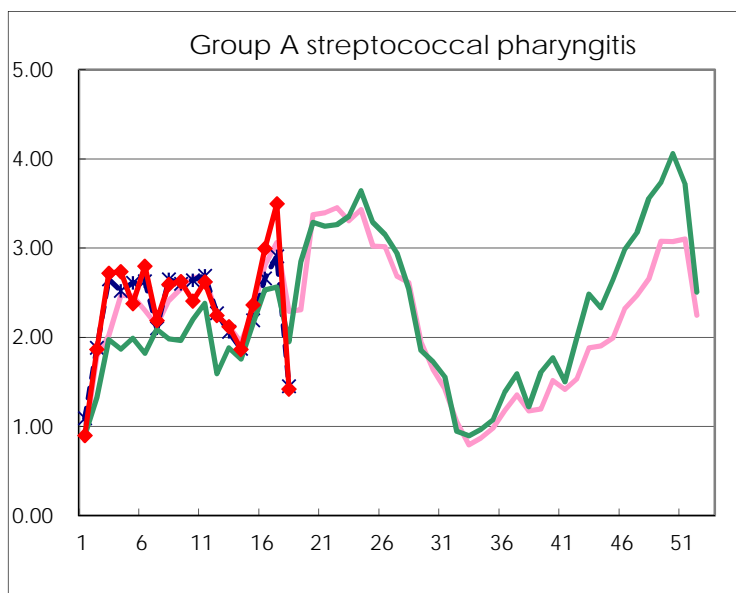
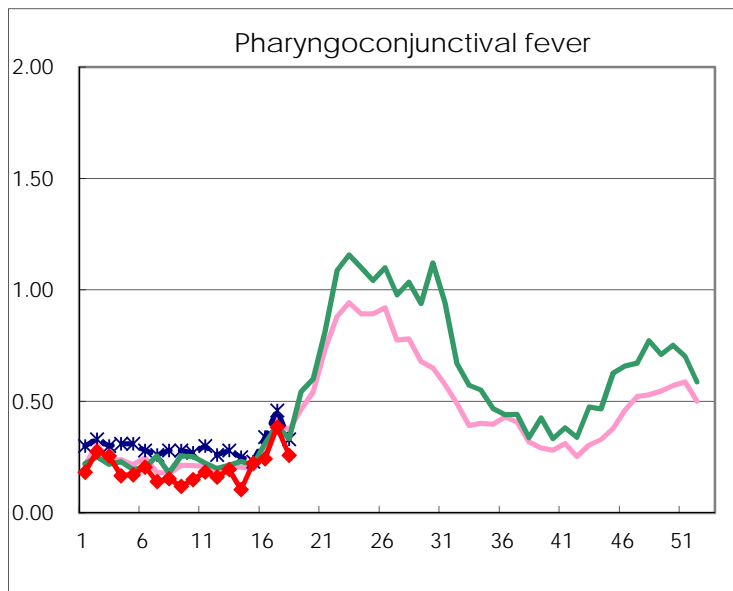
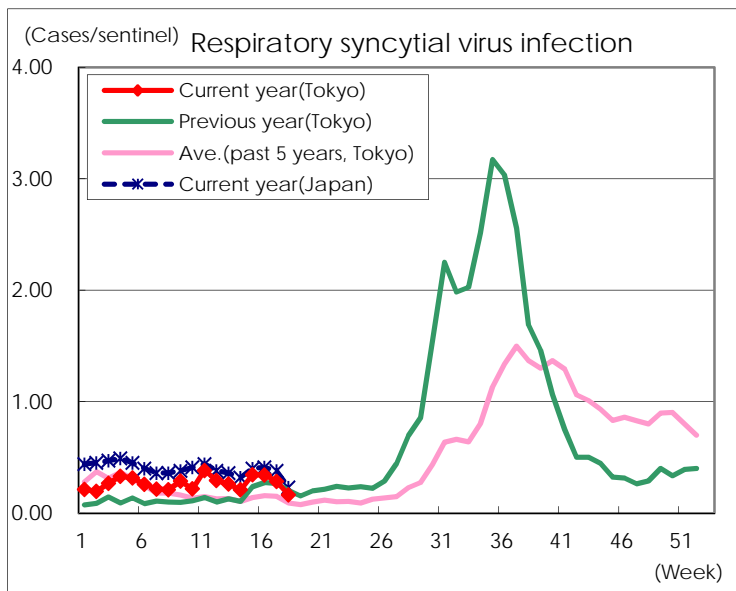
Category	Diseases	Tokyo					Japan	
		15th	16th	17th	18th	Cum 2018	18th	Cum 2018
V	Amebiasis	4	5	4	1	55	6	264
	Viral hepatitis(excluding hepatitis A and E)	1	1	2		11	2	55
	CRE infection	6	4	4	3	53	9	530
	Acute Flaccid Paralysis (excluding Acute poliomyelitis)				1	1	3	3
	Acute encephalitis(excluding JE and WNE)			1	2	31	4	291
	Cryptosporidiosis					1		6
	Creutzfeldt-Jakob disease	1				5	1	65
	Severe invasive streptococcal infections(TSLs)	3	2	3	1	41	4	285
	Acquired immunodeficiency syndrome (AIDS)	11	10	3	3	126	3	393
	Giardiasis		1			9		28
	Invasive <i>Haemophilus influenzae</i> disease			1	2	9	4	161
	Invasive meningococcal disease					4		15
	Invasive pneumococcal disease	10	4	13	5	168	46	1,403
	Varicella (limited to hospitalized case)	1	1	2		15	4	127
	Congenital rubella syndrome							
	Syphilis	31	38	37	19	539	29	2,024
	Disseminated cryptococcosis		1			9	3	57
	Tetanus					1	4	25
	Vancomycin-resistant <i>S. aureus</i> infection							
	Vancomycin-resistant <i>Enterococcus</i> infection					1		14
	Pertussis	6	12	12	9	127	52	1,249
	Rubella		1			1	1	14
	Measles	3	3	1	1	10	16	125
MDRA infection		1			2		6	

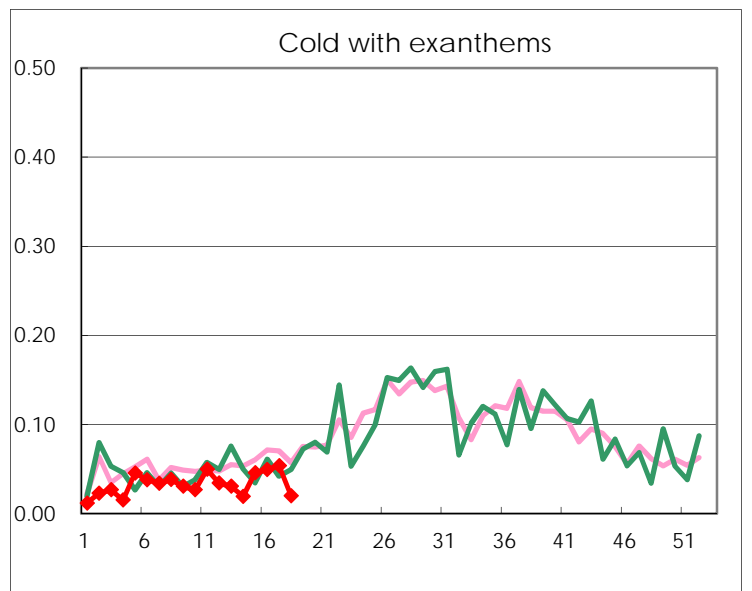
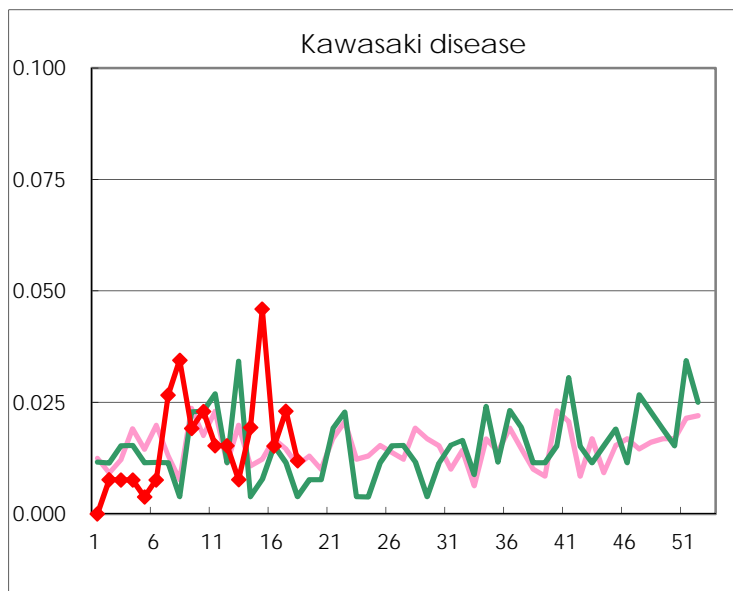
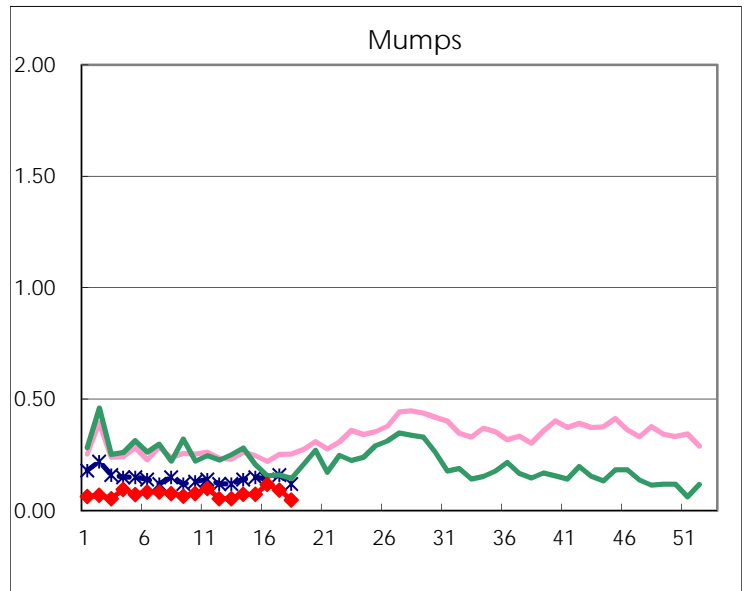
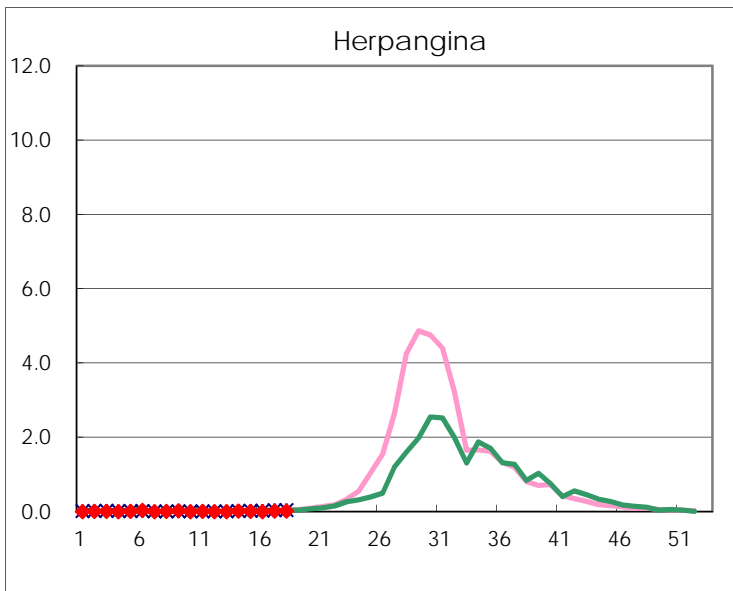
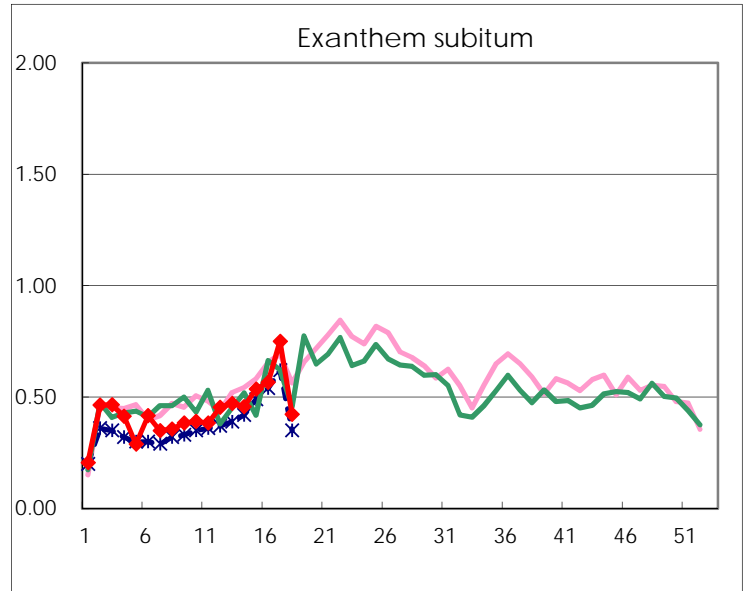
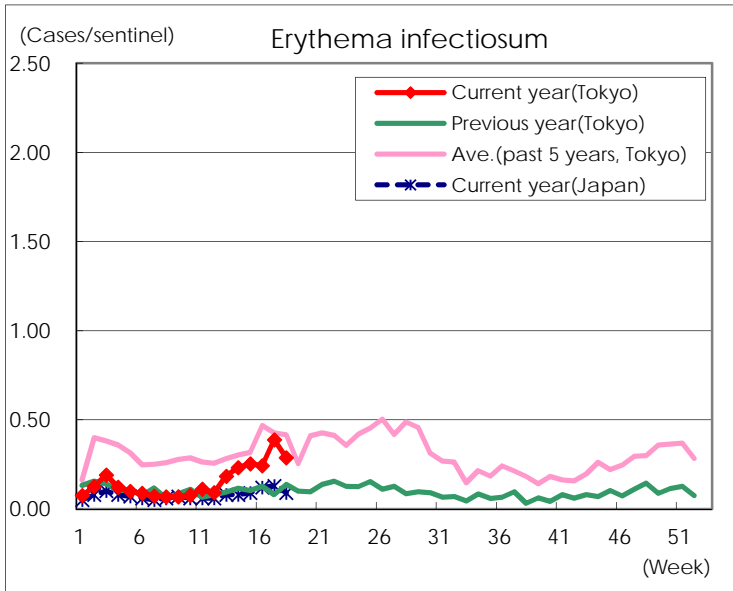
Number of patients with the diseases to be reported
by the designated clinics and hospitals

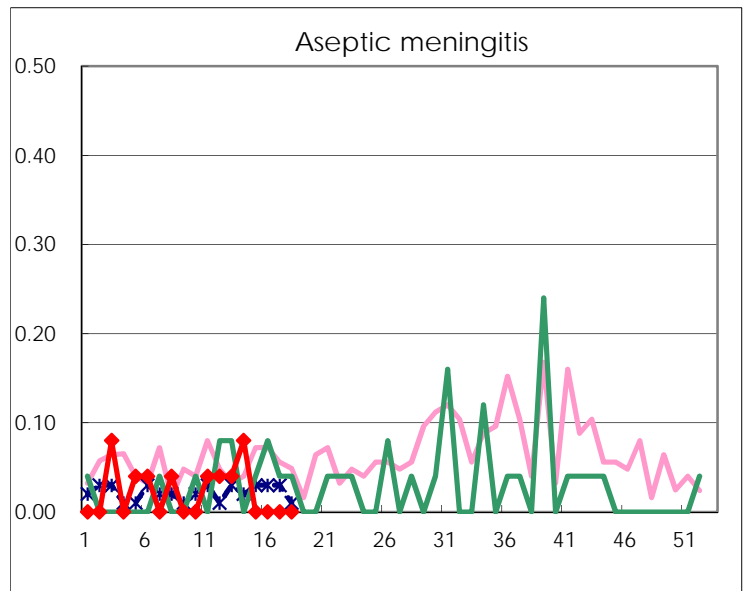
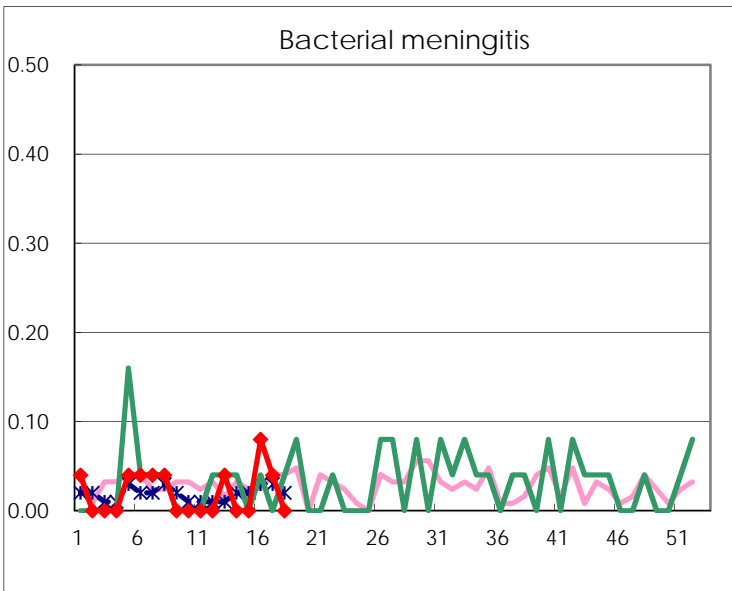
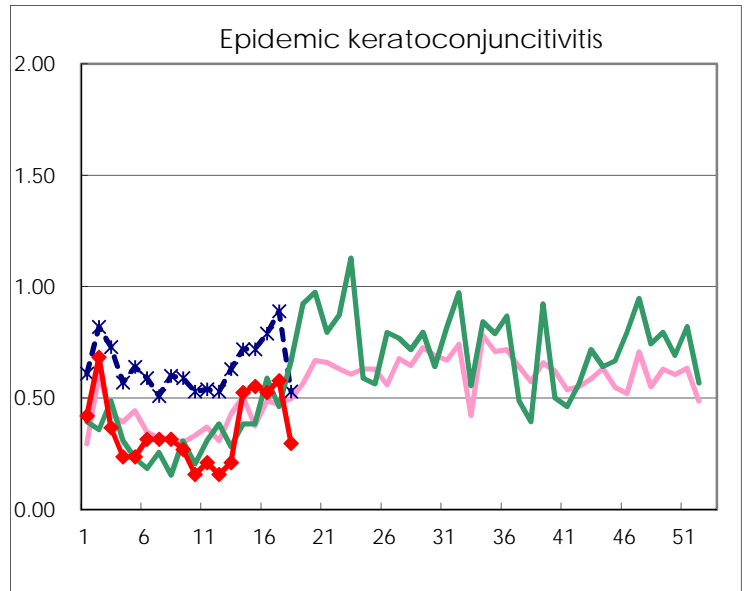
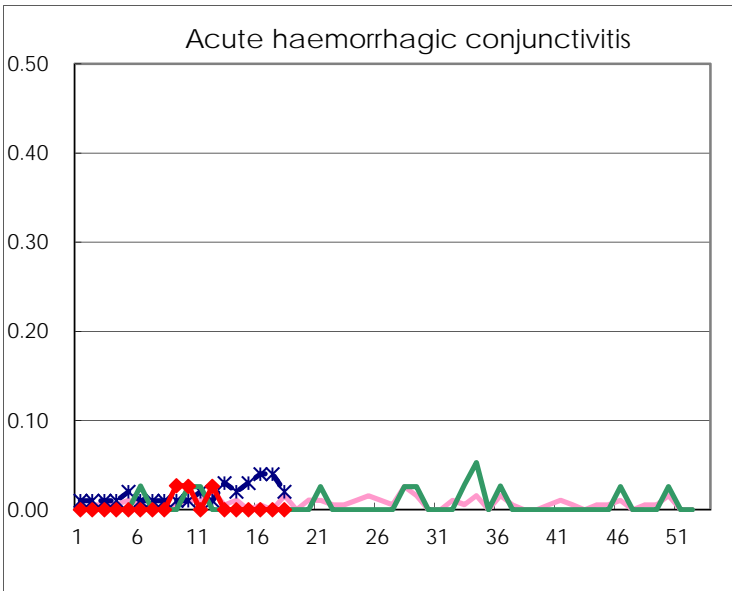
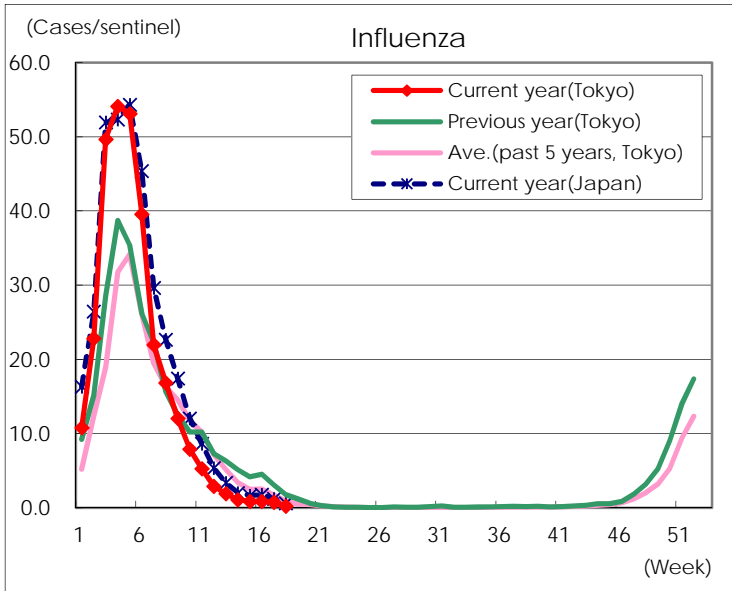
Diseases	Tokyo				
	15th	16th	17th	18th	/sentinel
Respiratory syncytial virus infection	90	90	74	41	0.16
Pharyngoconjunctival fever	58	64	100	65	0.26
Group A streptococcal pharyngitis	617	788	909	356	1.42
Infectious gastroenteritis	1,368	1,711	1,777	833	3.32
Chickenpox	74	84	71	58	0.23
Hand, foot, and mouth disease	15	22	29	14	0.06
Erythema infectiosum	66	64	101	72	0.29
Exanthem subitum	140	149	195	106	0.42
Herpangina	3	1	5	5	0.02
Mumps	19	31	24	12	0.05
Kawasaki disease	12	4	6	3	0.01
Cold with exanthems	12	13	14	5	0.02
Influenza	358	372	299	95	0.24
Acute hemorrhagic conjunctivitis					
Epidemic keratoconjunctivitis	21	20	22	11	0.30
Bacterial meningitis		2	1		
Aseptic meningitis					
<i>Mycoplasma pneumoniae</i>		1	1		
Chlamydial pneumonia (excluding psittacosis)			1		
Infectious gastroenteritis (only by Rotavirus)	7	8	6	6	0.24
Influenza-Associated Hospitalizations	7	7	5	3	0.12

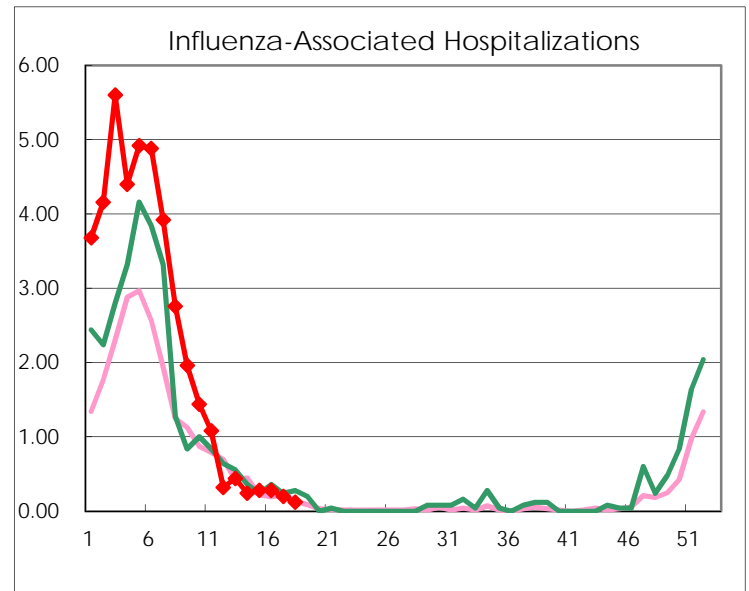
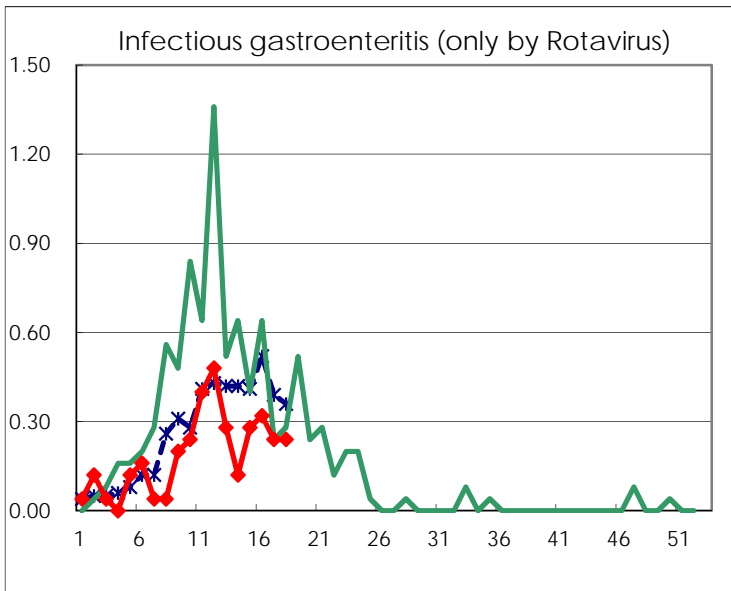
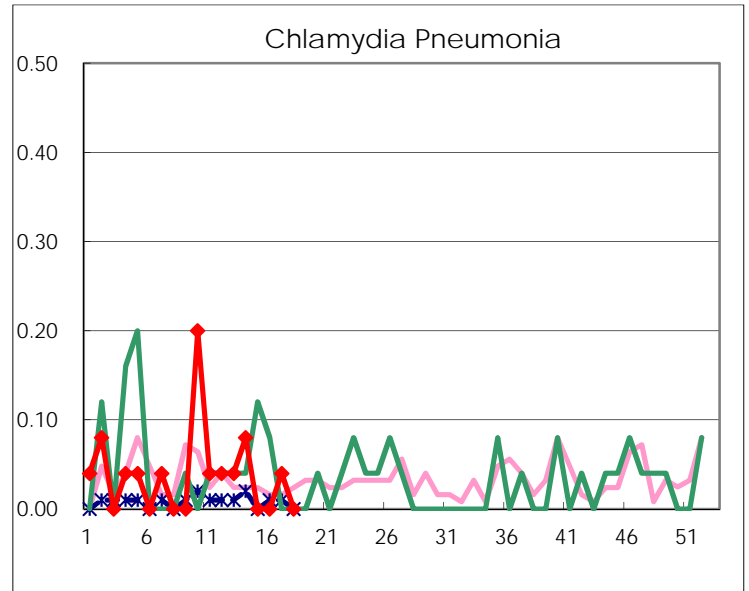
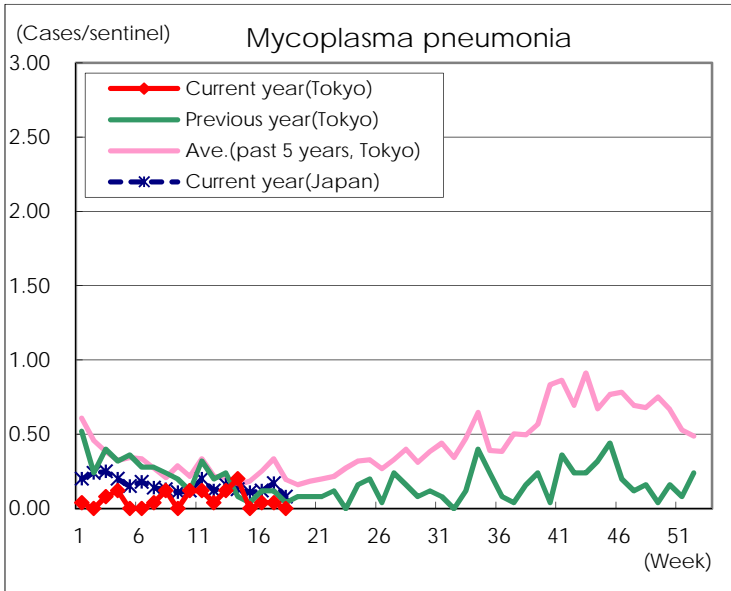
(Blank means 0.)

Disease Trend Graph (weekly reported cases per sentinel in comparison)









Number of sentinel facilities for weekly reporting		
Types of sentinels	Number of sentinels	Sentinels having reported
Pediatric	264	251
Influenza	419	400
Ophthalmic	39	37
Specially-designated	25	25